

NBS REPORT

9796

HYDROGEN SLUSH DENSITY REFERENCE SYSTEM

FINAL REPORT

by

D. H. Weitzel, L. T. Lowe, D. A. Ellerbruch,
J. E. Cruz, and C. F. Sindt



N72-13357 (NASA-CR-124764) HYDROGEN SLUSH DENSITY
REFERENCE SYSTEM Final Report D.H.
Weitzel, et al (National Bureau of
Standards) 30 Jun. 1971 83 p CSCL 14B
Unclas 10764 G3/14

FACI (NASA CR OR TMX OR AD NUMBER)

NOAD

(CATEGORY)

U. S. DEPARTMENT OF COMMERCE
NATIONAL BUREAU OF STANDARDS

Institute for Basic Standards
Boulder, Colorado 80302

NATIONAL BUREAU OF STANDARDS

The National Bureau of Standards¹ was established by an act of Congress March 3, 1901. The Bureau's overall goal is to strengthen and advance the Nation's science and technology and facilitate their effective application for public benefit. To this end, the Bureau conducts research and provides: (1) a basis for the Nation's physical measurement system, (2) scientific and technological services for industry and government, (3) a technical basis for equity in trade, and (4) technical services to promote public safety. The Bureau consists of the Institute for Basic Standards, the Institute for Materials Research, the Institute for Applied Technology, the Center for Computer Sciences and Technology, and the Office for Information Programs.

THE INSTITUTE FOR BASIC STANDARDS provides the central basis within the United States of a complete and consistent system of physical measurement; coordinates that system with measurement systems of other nations; and furnishes essential services leading to accurate and uniform physical measurements throughout the Nation's scientific community, industry, and commerce. The Institute consists of a Center for Radiation Research, an Office of Measurement Services and the following divisions:

Applied Mathematics—Electricity—Heat—Mechanics—Optical Physics—Linac Radiation²—Nuclear Radiation²—Applied Radiation²—Quantum Electronics³—Electromagnetics³—Time and Frequency³—Laboratory Astrophysics³—Cryogenics³.

THE INSTITUTE FOR MATERIALS RESEARCH conducts materials research leading to improved methods of measurement, standards, and data on the properties of well-characterized materials needed by industry, commerce, educational institutions, and Government; provides advisory and research services to other Government agencies; and develops, produces, and distributes standard reference materials. The Institute consists of the Office of Standard Reference Materials and the following divisions:

Analytical Chemistry—Polymers—Metallurgy—Inorganic Materials—Reactor Radiation—Physical Chemistry.

THE INSTITUTE FOR APPLIED TECHNOLOGY provides technical services to promote the use of available technology and to facilitate technological innovation in industry and Government; cooperates with public and private organizations leading to the development of technological standards (including mandatory safety standards), codes and methods of test; and provides technical advice and services to Government agencies upon request. The Institute also monitors NBS engineering standards activities and provides liaison between NBS and national and international engineering standards bodies. The Institute consists of the following technical divisions and offices:

Engineering Standards Services—Weights and Measures—Flammable Fabrics—Invention and Innovation—Vehicle Systems Research—Product Evaluation Technology—Building Research—Electronic Technology—Technical Analysis—Measurement Engineering.

THE CENTER FOR COMPUTER SCIENCES AND TECHNOLOGY conducts research and provides technical services designed to aid Government agencies in improving cost effectiveness in the conduct of their programs through the selection, acquisition, and effective utilization of automatic data processing equipment; and serves as the principal focus within the executive branch for the development of Federal standards for automatic data processing equipment, techniques, and computer languages. The Center consists of the following offices and divisions:

Information Processing Standards—Computer Information—Computer Services—Systems Development—Information Processing Technology.

THE OFFICE FOR INFORMATION PROGRAMS promotes optimum dissemination and accessibility of scientific information generated within NBS and other agencies of the Federal Government; promotes the development of the National Standard Reference Data System and a system of information analysis centers dealing with the broader aspects of the National Measurement System; provides appropriate services to ensure that the NBS staff has optimum accessibility to the scientific information of the world, and directs the public information activities of the Bureau. The Office consists of the following organizational units:

Office of Standard Reference Data—Office of Technical Information and Publications—Library—Office of Public Information—Office of International Relations.

¹ Headquarters and Laboratories at Gaithersburg, Maryland, unless otherwise noted; mailing address Washington, D.C. 20234.

² Part of the Center for Radiation Research.

³ Located at Boulder, Colorado 80302.

NATIONAL BUREAU OF STANDARDS REPORT

NBS PROJECT

27506-2750464

June 30, 1971

NBS REPORT

9796

HYDROGEN SLUSH DENSITY REFERENCE SYSTEM FINAL REPORT

to

National Aeronautics and Space Administration
George C. Marshall Space Flight Center
Huntsville, Alabama 35812

by

D. H. Weitzel, L. T. Lowe, D. A. Ellerbruch
J. E. Cruz, and C. F. Sindt

Cryogenics Division
Institute for Basic Standards
National Bureau of Standards
Boulder, Colorado 80302

IMPORTANT NOTICE

NATIONAL BUREAU OF STANDARDS REPORTS are usually preliminary or progress accounting documents intended for use within the Government. Before material in the reports is formally published it is subjected to additional evaluation and review. For this reason, the publication, reprinting, reproduction, or open-literature listing of this Report, either in whole or in part, is not authorized unless permission is obtained in writing from the Office of the Director, National Bureau of Standards, Washington, D.C. 20234. Such permission is not needed, however, by the Government agency for which the Report has been specifically prepared if that agency wishes to reproduce additional copies for its own use.



U.S. DEPARTMENT OF COMMERCE
NATIONAL BUREAU OF STANDARDS

Contents

	Page
1. Introduction	1
2. Design Considerations	1
2.1 General	1
2.2 A Method for Slush Density Measurement	2
2.3 Error Analysis	8
2.4 Slush Quality Error	12
2.5 Error Due to Heat Leak	15
3. Design Details	19
3.1 Weighing System	19
3.2 Stirring Method	21
3.3 System Operation	24
4. Density Transducer Tests	30
4.1 Beta-Ray Attenuation	30
4.2 Gamma Ray Attenuation	35
4.3 Capacitance Method	37
4.4 Microwave Method for Dielectric Measurement	43
4.5 Velocity of Sound	50
5. Summary	53
6. References	56
Appendix A.	57
Appendix B.	60

List of Figures

Figure 1. Empty Weigh-Can in Cryostat.	3
Figure 2. Weigh-Can Filled with Triple-Point Liquid Hydrogen.	4
Figure 3. Cryostat and Weigh-Can Filled with Triple- Point Liquid Hydrogen.	5

List of Figures (Continued)		Page
Figure 4.	Hydrogen Slush in Weigh-Can, Cryostat Filled with Triple-Point Liquid.	6
Figure 5.	Error Analysis Results.	11
Figure 6.	Weigh-Can Suspension System	20
Figure 7.	Magnetic Stirring Method	23
Figure 8.	Weigh-Can Interior Showing Stirring Rotor and Density Transducers	25
Figure 9.	Panel Board and Flow Diagram	26
Figure 10.	General View of Assembled System	27
Figure 11.	Cryostat Interior with Weigh-Can	29
Figure 12.	Beta-Ray Source and Detector	32
Figure 13.	Schematic of Beta-Ray Attenuation System.	33
Figure 14.	"Rod to Blade" Capacitor for Hydrogen Slush	41
Figure 15.	Microwave Method for Density Measurement	45
Figure 16.	Settled Slush Density Data Obtained by Micro- wave Method	49
Figure 17.	Younglove Data for Velocity of Sound in Hydrogen	51
Figure 18.	Velocity of Sound Transducer for Density Measurement	52

List of Tables

Table 1.	Density, Dielectric Constant, and Polarizability for Hydrogen from Normal Boiling to 0.5 Solid Fraction Slush	39
Table 2.	Hydrogen Slush Density Transducer Summary	54

ABSTRACT

A hydrogen slush density reference system was designed for calibration of field-type instruments and/or transfer standards. The device is based on the buoyancy principle of Archimedes. The solids are weighed in a low-mass container so arranged that solids and container are buoyed by triple-point liquid hydrogen during the weighing process.

Several types of hydrogen slush density transducers were developed and tested for possible use as transfer standards. The most successful transducers found were those which depend on change in dielectric constant, after which the Clausius-Mossotti function is used to relate dielectric constant and density.

Key words: Capacitance; density reference system; density transducers; density transfer standard; dielectric constant; hydrogen slush; microwave; nuclear radiation attenuation.

HYDROGEN SLUSH DENSITY REFERENCE SYSTEM*

D. H. Weitzel, L. T. Lowe, D. A. Ellerbruch,
J. E. Cruz, and C. F. Sindt

1. Introduction

The purpose of the hydrogen slush density reference system is for calibration of field type instruments and/or transfer standards. The transfer standard is an instrument which can be used in or on a storage tank or pipeline containing slush hydrogen, but which will not be a fixed or permanent part of the facility instrumentation. The transfer standard thus provides a method for traceability of facility instrumentation to the primary density reference system.

2. Design Considerations

2.1 General

For a density reference system, it is advisable to work directly with mass and volume. Several methods for hydrogen slush weighing were considered before a system was designed to take advantage of the already well known density of triple-point liquid hydrogen. Triple-point liquid will always be one component of the solid-liquid mixture known as hydrogen slush. The triple-point liquid density is given by Roder, et al.^[1] as 77.017 kg m^{-3} , with an uncertainty of ± 0.1 percent, and the triple-point solid density is given by Dwyer, et al.,^[2] as 86.59 kg m^{-3} , with an uncertainty of ± 0.3 percent. A hydrostatic weighing method was accordingly conceived which would take advantage of the more accurate of these two, i. e., the triple-point liquid density.

*This work was carried out at the National Bureau of Standards under NASA-MSFC Contract H-2159A.

2.2 A Method for Slush Density Measurement

When considering density determination for slush hydrogen, which is neither solid nor liquid but a variable mixture of these two phases, it might seem unlikely that the advantages of Archimedes' Principle could be applied. This is not the case, however, as will be shown.

Consider a light weight container suspended from a weighing system as shown in figure 1. The container is suspended inside a dewar which is closed by a gas-tight top plate. The mass transducer is in a separate housing above the top plate, but communicates with the dewar atmosphere through a clearance hole provided for the suspension member. The first step is to zero and calibrate the weighing system; this is done with calibration weights in the column above the top plate.

The empty container is weighed, then filled with triple-point liquid hydrogen from a separate cryostat as represented in figure 2. The mass of the full container is noted, the empty mass is subtracted, and the net mass of the liquid contained is recorded as M_l .

Figure 3 shows the cryostat completely full of triple-point liquid. The mass of the container is again noted. This buoyed mass of the "empty" container is a constant of the apparatus, and a method is provided for zeroing the weighing system with this exact mass suspended from it.

Slush is now introduced, as shown in figure 4. This is done by lifting the container up against a plate which has screened holes in it, and then transferring slush from the same cryostat which previously provided triple-point liquid. The solids are retained while the excess liquid is transferred back to the slush generator. When a convenient solid

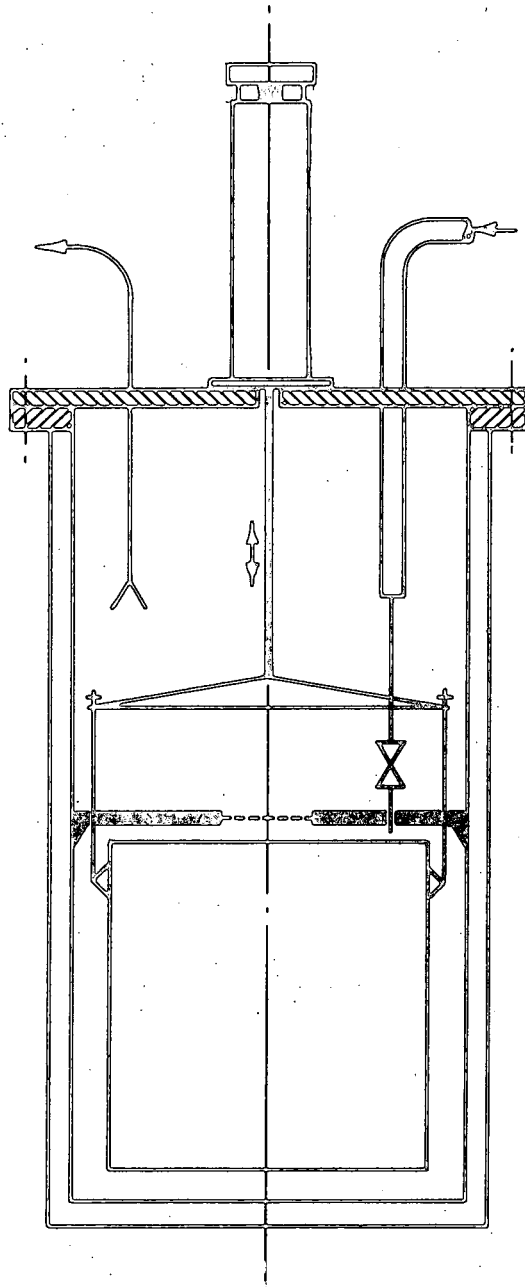


Figure 1. Empty Weigh-Can in Cryostat.

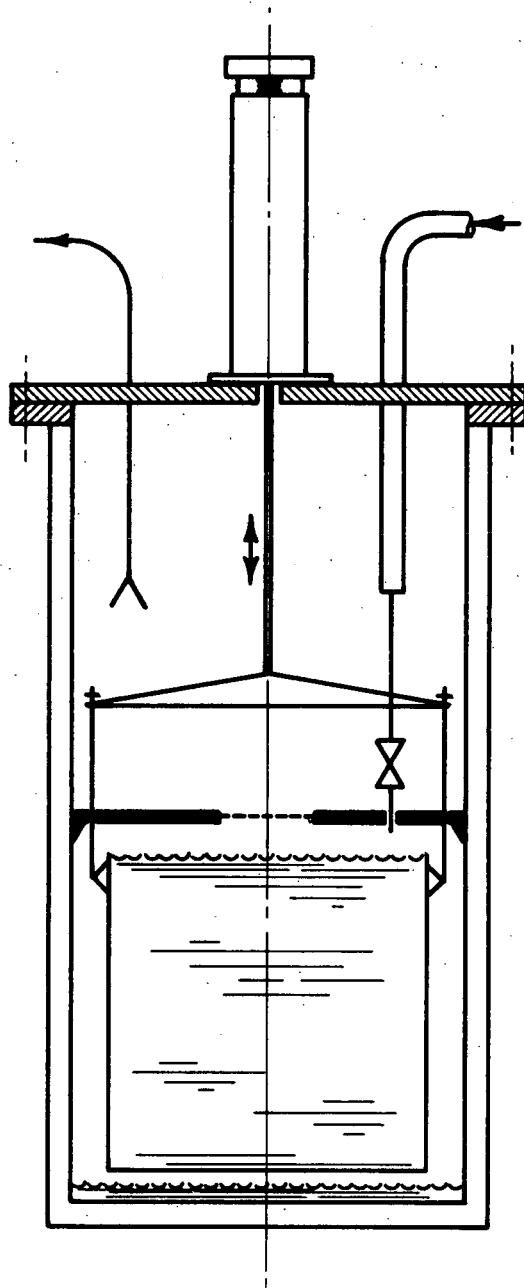


Figure 2. Weigh-Can Filled with Triple-Point Liquid Hydrogen.

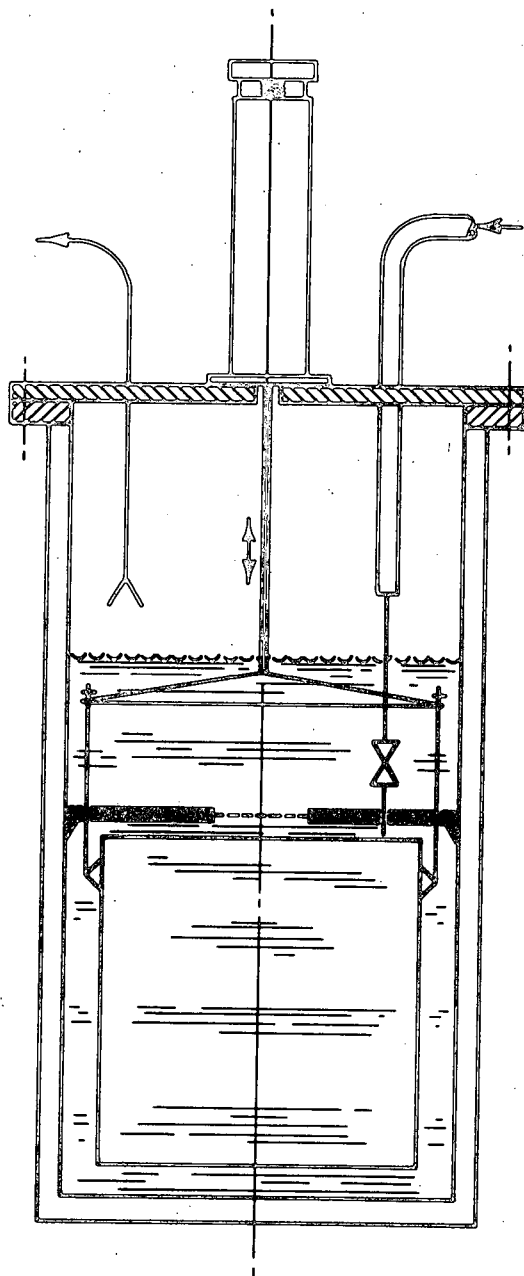


Figure 3. Cryostat and Weigh-Can Filled with Triple-Point Liquid Hydrogen.

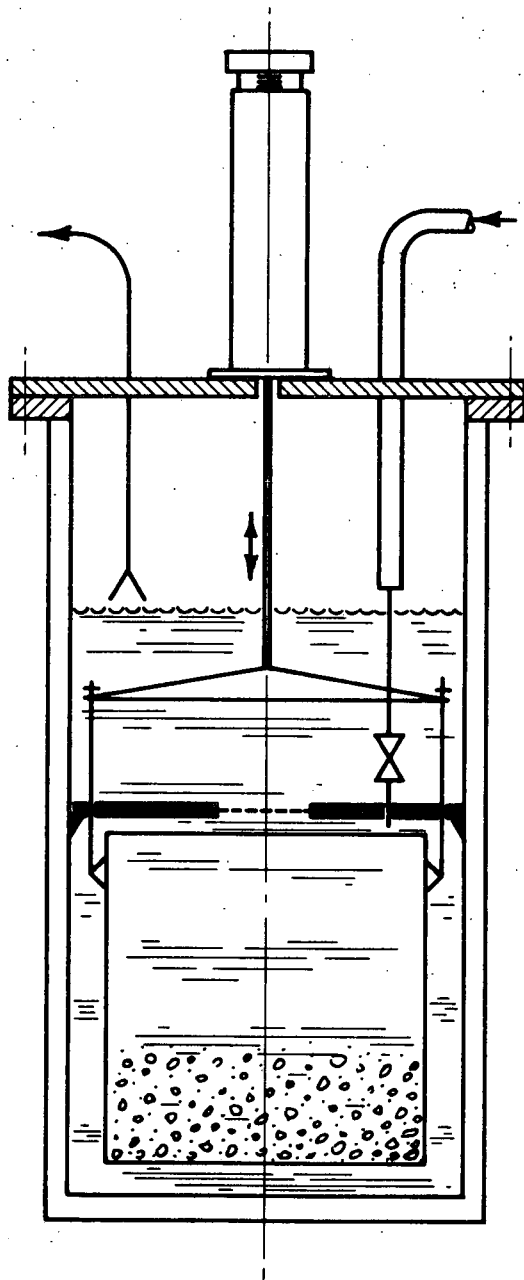


Figure 4. Hydrogen Slush in Weigh-Can, Cryostat Filled with Triple-Point Liquid.

fraction has been added to the liquid, the final weighing is made. After subtracting the buoyed mass of the "empty" container, the buoyed mass of the solid hydrogen is known. This is designated as M_b , the variable parameter which will yield the desired density ρ for each sample of slush.

The functional relation between the slush density ρ , the triple-point liquid density ρ_ℓ , and the masses M_ℓ and M_b can be easily derived. The mass of the slush in the container is equal to ρV , where V is the volume. The mass of the liquid before any solid was present was $\rho_\ell V$. The difference between these two masses is exactly M_b , the buoyed mass of the solid hydrogen in the container. Thus

$$\rho V - \rho_\ell V = M_b.$$

Since the volume V is equal to M_ℓ/ρ_ℓ , the following relationships can be written:

$$\rho = \frac{M_b}{V} + \rho_\ell = \frac{M_b \rho_\ell}{M_\ell} + \rho_\ell \text{ or}$$

$$\rho = \rho_\ell \left(\frac{M_b}{M_\ell} + 1 \right) \quad (1)$$

where

- ρ = slush density
- ρ_ℓ = triple-point liquid density
- M_b = buoyed mass of solid
- M_ℓ = mass of triple-point liquid which just fills the container.

Equation (1) separates ρ into two factors, one of which (ρ_ℓ) is a measured physical constant taken from the literature. Its use introduces

a constant systematic error, whereas the other factor $(M_b/M_l + 1)$ will introduce both systematic and random errors.

Thus, the experimental measurements required to obtain the slush density ρ are M_b and M_l , both of which are determined by direct weighing. The magnitude of M_l will be about 2000 g for an inner container having a diameter of 28 cm and depth of 37 cm. The magnitude of M_b will vary from a few grams for a low solid fraction to about 137 g for 60 percent solid fraction.

2.3 Error Analysis

It is instructive at this point to make some reasonable assumptions about the weighing system and calculate the accuracy with which an unknown slush density can be determined. If calibration masses and a suitable method for their application and removal during the experiment are provided, it should be quite easy to determine both M_b and M_l to within ± 0.5 percent of their true values. In order to make a better example, however, assume that the inaccuracy in the weighing can be as much as ± 2.0 percent.

A general expression for compounding of errors in y , where $y = f(x_1, x_2, \dots, x_n)$ is

$$(dy)^2 = \sum_{i=1}^n \left(\frac{\partial f}{\partial x_i} \right)^2 (dx_i)^2 \quad (2)$$

if the components of error dx_i are independently distributed and symmetrical with respect to positive and negative values.^[3] These are reasonable assumptions for the situation represented by equation (1).

Accordingly,

$$(d\rho)^2 = \left(\frac{\partial\rho}{\partial\rho_\ell}\right)^2 (d\rho_\ell)^2 + \left(\frac{\partial\rho}{\partial M_b}\right)^2 (dM_b)^2 + \left(\frac{\partial\rho}{\partial M_\ell}\right)^2 (dM_\ell)^2.$$

Typical values for the variables are

$$\begin{aligned} M_b &= 117 \text{ g (the value for a solid fraction of 0.50)} \\ M_\ell &= 2000 \text{ g} \\ \rho_\ell &= 77.017 \text{ kg m}^{-3}. \end{aligned}$$

From these values and the assumed fractional errors in weighing, together with the ± 0.1 percent uncertainty in ρ_ℓ , the uncertainties are:

$$\frac{dM_b}{M_b} = 0.02, \text{ or } dM_b = 2.34 \text{ g}$$

$$\frac{dM_\ell}{M_\ell} = 0.02, \text{ or } dM_\ell = 40.0 \text{ g}$$

$$\frac{d\rho_\ell}{\rho_\ell} = 0.001, \text{ or } d\rho_\ell = 0.077 \text{ kg m}^{-3}.$$

The partial derivatives are:

$$\frac{\partial\rho}{\partial\rho_\ell} = \left(\frac{M_b}{M_\ell} + 1\right) = 1.05856$$

$$\frac{\partial\rho}{\partial M_b} = \frac{\rho_\ell}{M_\ell} = 0.03854$$

$$\frac{\partial\rho}{\partial M_\ell} = \frac{-\rho_\ell M_b}{M_\ell^2} = -0.002256.$$

From equation (2),

$$(d\rho)^2 = 0.00665 + 0.00814 + 0.00818, \text{ or}$$

$$\begin{aligned} (d\rho)^2 &= 0.0230, \text{ from which} \\ d\rho &= \pm 0.15 \text{ kg m}^{-3}. \end{aligned}$$

Note that the three terms which add together to get $(d\rho)^2$ are approximately equal in magnitude even though the uncertainty in the triple-point liquid density (which gives the first term) is ± 0.1 percent, whereas the uncertainty in each of the two weighings is ± 2.0 percent, or 20 times as great. This comes about because of the functional relationship expressed in equation (1). By making use of Archimedes' Principle it is possible to capitalize heavily on the high degree of accuracy with which the triple-point liquid density ρ_l is known.

To carry this example through, equation (1) is used to find the mean ρ for a solid fraction of 0.50. Thus

$$\begin{aligned} \rho &= \rho_l \left(\frac{M_b}{M_l} + 1 \right) = 77.017 \left(\frac{117}{2000} + 1 \right) \\ &= 81.35 \text{ kg m}^{-3}. \end{aligned}$$

The fractional error in ρ is

$$\frac{d\rho}{\rho} = \pm \frac{0.15}{81.35} \text{ or } \pm 0.18\%.$$

From these considerations it may be concluded that the density of hydrogen slush can be determined at 0.50 solid fraction with an uncertainty of less than ± 0.2 percent if a weighing system which is accurate to ± 2.0 percent is used. Figure 5 shows how the uncertainty in slush density ρ will vary for the assumed system as the density itself is varied. A scale of mass fraction solid (sometimes called "quality") is shown for comparison with density. The uncertainty is shown in kg m^{-3} as well as percent of measured mean density.

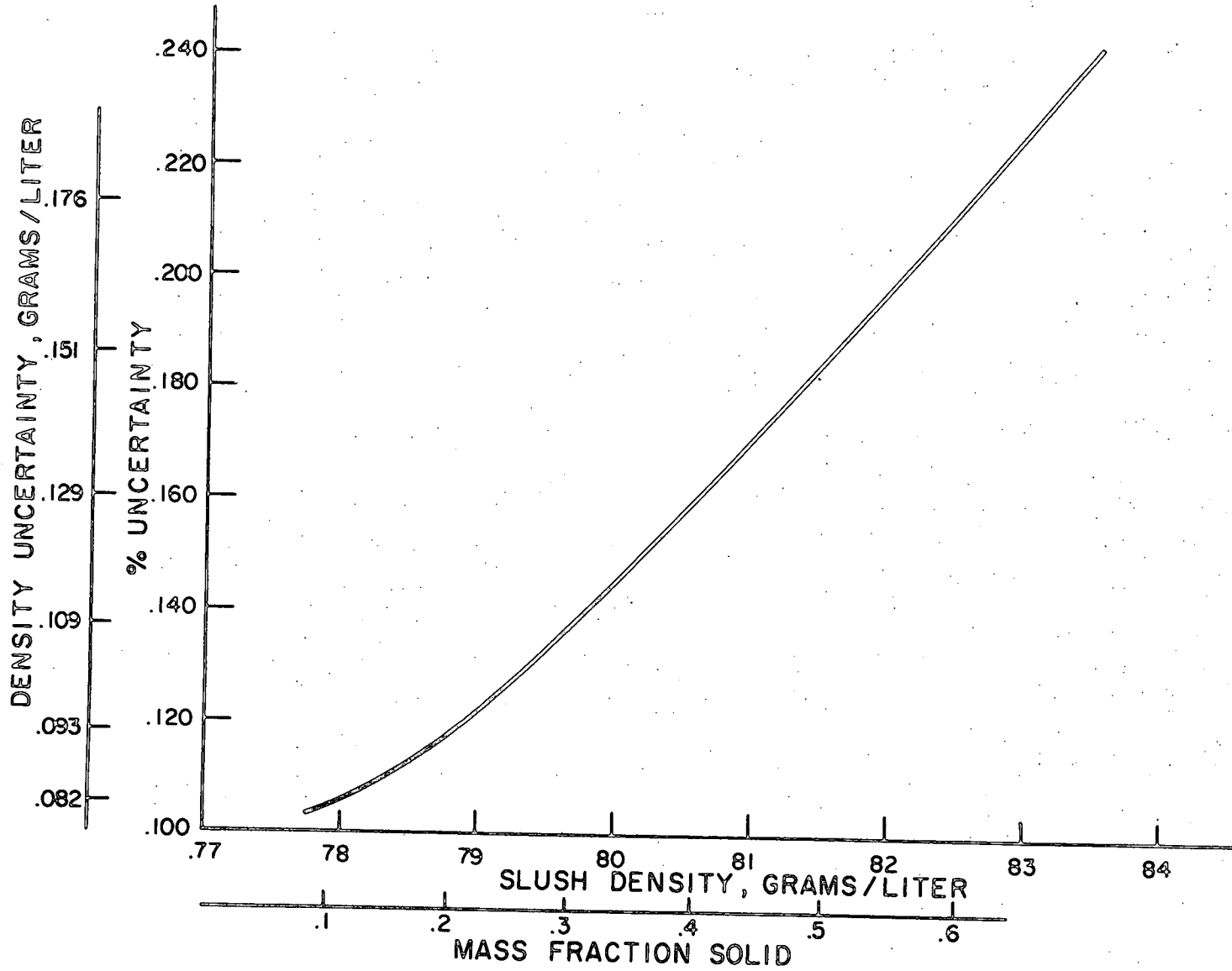


Figure 5. Error Analysis Results.

2.4 Slush Quality Error

It is often convenient to use the concept of "quality" by which is meant the mass fraction of solid in the liquid - solid mixture. Conversion from slush density to slush quality is, of course, a purely mathematical manipulation and cannot introduce any new experimental error which is traceable to the density reference system. The conversion from density to quality does, however, introduce a new physical constant along with the uncertainty in our present knowledge of that constant. The constant is ρ_s , the triple-point density of solid hydrogen, which is given in reference [2] as 86.59 kg m^{-3} , with an uncertainty of ± 0.3 percent.

If we now examine the equation which converts density to mass fraction of solid (quality) we can see how much additional uncertainty is introduced into our statement of results. The expression for mass fraction of solid in terms of the slush, liquid, and solid densities, is

$$F = \frac{\rho_s (\rho - \rho_l)}{\rho (\rho_s - \rho_l)}. \quad (3)$$

For ρ we substitute from equation (1), which gives

$$F = \frac{\rho_s M_b}{(M_b + M_l) (\rho_s - \rho_l)}. \quad (4)$$

This expresses F in terms of the experimental variables M_b and M_l and the systematic parameters ρ_l and ρ_s . The partial derivatives are

$$\frac{\partial F}{\partial M_b} = \frac{\rho_s M_b}{(\rho_s - \rho_l) (M_b + M_l)^2}$$

$$\frac{\partial F}{\partial M_b} = \frac{-\rho_s M_b}{(\rho_s - \rho_l)(M_b + M_l)^2}$$

$$\frac{\partial F}{\partial \rho_l} = \frac{-\rho_s M_b}{(M_b + M_l)(\rho_s - \rho_l)^2}$$

$$\frac{\partial F}{\partial \rho_s} = \frac{-M_b \rho_l}{(M_b + M_l)(\rho_s - \rho_l)^2}$$

Values for the experimental variables and systematic parameters together with their uncertainties are:

$$\begin{aligned} M_b &= 117.01 \pm 0.58 \text{ g} \quad (\text{for } 0.500 \text{ mass fraction}) \\ M_l &= 1998 \pm 10 \text{ g} \\ \rho_l &= 77.017 \pm 0.077 \text{ kg m}^{-3} \\ \rho_s &= 86.59 \pm 0.26 \text{ kg m}^{-3}. \end{aligned}$$

If we make these substitutions and square the results, we have (without designating units):

$$\left(\frac{\partial F}{\partial M_b}\right)^2 = 1.63 \times 10^{-5}$$

$$\left(\frac{\partial F}{\partial M_l}\right)^2 = 5.57 \times 10^{-8}$$

$$\left(\frac{\partial F}{\partial \rho_l}\right)^2 = 0.271$$

$$\left(\frac{\partial F}{\partial \rho_s}\right)^2 = 0.215.$$

Also we have

$$\begin{aligned}
 (dM_b)^2 &= (0.58)^2 = 0.342 \\
 (dM_t)^2 &= (10)^2 = 100 \\
 (d\rho_t)^2 &= (0.077)^2 = 5.93 \times 10^{-3} \\
 (d\rho_s)^2 &= (0.26)^2 = 6.76 \times 10^{-2}.
 \end{aligned}$$

The uncertainty in F can now be approximated, as was done for ρ , by use of equation (2). Thus, when $F = 0.500$, for which the value of M_b is 117.01 ± 0.58 g/l, we have

$$\begin{aligned}
 (dF)^2 &= \left(\frac{\partial F}{\partial M_b}\right)^2 (dM_b)^2 + \left(\frac{\partial F}{\partial M_t}\right)^2 (dM_t)^2 + \left(\frac{\partial F}{\partial \rho_t}\right)^2 (d\rho_t)^2 \\
 &+ \left(\frac{\partial F}{\partial \rho_s}\right)^2 (d\rho_s)^2 \\
 &= (5.57 \times 10^{-6}) + (5.57 \times 10^{-6}) + (1.61 \times 10^{-3}) + (1.45 \times 10^{-2}) \\
 &= 1.61 \times 10^{-2}
 \end{aligned}$$

$$dF = \pm 0.013.$$

The fractional error in F is

$$\frac{dF}{F} = \frac{0.013}{0.50} = \pm 0.026 \text{ or } \pm 2.6\%.$$

Thus, the uncertainty in the mass fraction F is about 24 times as great as the uncertainty in the slush density ρ when both are expressed as fractional errors at 0.500 solid fraction. This is purely a consequence of introducing the relatively uncertain physical constant ρ_s into our expression for slush density. As our knowledge of ρ_s improves, the statement of solid mass fraction (quality) can be given with correspondingly less uncertainty.

2.5 Error Due to Heat Leak

One more source of experimental error should be considered before the analysis is complete. This has to do with heat leak into the inner container. Any such heat influx will continuously change the slush density by melting some of the solid. Thus, the density ρ becomes a function of time, and it is necessary to determine this time dependence. A preliminary task is to analyze the accuracy with which this can be done. Since there will always be some elapse of time between a density determination and a readout from a transfer standard which is in place and being calibrated, it is apparent that the time dependence of ρ must be known with a high degree of accuracy.

In order to define the functional relationship between ρ and elapsed time t , note that in equation (1),

$$\rho = \rho_{\ell} \left(\frac{M_b}{M_{\ell}} + 1 \right),$$

it will be M_b which varies with time as heat leaks into the inner container. Therefore

$$\frac{d\rho}{dt} = \frac{\rho_{\ell}}{M_{\ell}} \frac{dM_b}{dt}.$$

It is the solid mass M_s , however, rather than the buoyed mass M_b , which varies directly with heat influx, so write

$$M_b = M_s - \rho_{\ell} V_s = M_s - \rho_{\ell} \frac{M_s}{\rho_s} = M_s \left(1 - \frac{\rho_{\ell}}{\rho_s} \right).$$

Then

$$\frac{dM_b}{dt} = \left(1 - \frac{\rho_l}{\rho_s}\right) \frac{dM_s}{dt} = \left(1 - \frac{\rho_l}{\rho_s}\right) \frac{1}{H} \frac{dQ}{dt},$$

where

H is heat of fusion and

$\frac{dQ}{dt}$ is heat influx.

This substitution gives

$$\frac{d\rho}{dt} = \frac{\rho_l}{M_l H} \left(1 - \frac{\rho_l}{\rho_s}\right) \frac{dQ}{dt}.$$

This is an exact expression showing that the time variation of slush density is directly proportional to heat leak into the inner container. If the system is at steady state, all terms on the right side of the equation are constants, although they all have uncertainties associated with them. The values and uncertainties are known for all of the constants except dQ/dt , for which the symbol W is used. Thus

$$d\rho = -A dt \tag{6}$$

where

$$A = \frac{W \rho_l}{M_l H} \left(1 - \frac{\rho_l}{\rho_s}\right),$$

and the negative sign is introduced to show that density decreases with time. Integration of (6) from t_0 to t_1 gives

$$\rho_1 - \rho_0 = -A(t_1 - t_0).$$

Note that $(t_1 - t_0)$ is a fixed time interval, which is designated T_1 . Then

$$-A = \frac{\rho_1 - \rho_0}{T_1} = -\frac{W\rho_\ell}{M_\ell H} \left(1 - \frac{\rho_\ell}{\rho_s}\right),$$

from which

$$-W = \frac{M_\ell \rho_s H (\rho_1 - \rho_0)}{T_1 \rho_\ell (\rho_s - \rho_\ell)}.$$

Since ρ_1 and ρ_0 are not independent variables, use equation (1) from which

$$\rho - \rho_0 = \frac{\rho_\ell}{M_\ell} (M_{b1} - M_{b0}).$$

Then

$$-W = \frac{\rho_s H (M_{b1} - M_{b0})}{T_1 (\rho_s - \rho_\ell)}. \quad (7)$$

Equation (7) gives W in terms of independent experimental variables (M_{b1} , M_{b0} , and T_1) and systematic parameters (ρ_s , ρ_ℓ , and H). Now express the constant A in these terms, giving

$$\frac{d\rho}{dt} = -A = \frac{\rho_\ell (M_{b1} - M_{b0})}{T_1 M_\ell}. \quad (8)$$

Equation (8) gives the variation of slush density with time, based on a preliminary experiment performed during the time interval T_1 . M_{b0} and M_{b1} are load cell readings taken at the beginning and end, respectively, of the time interval T_1 .

The expression for a final slush density ρ , which is determined by obtaining an initial density ρ_0 and correcting it for the solid melted during an elapsed time interval T_2 , can now be written as

$$\begin{aligned}\rho &= \rho_0 + \int_{t_0}^{t_2} \frac{d\rho}{dt} dt \\ &= \rho_0 + \frac{\rho_\ell (M_{b1} - M_{b0})}{T_1 M_\ell} (t_2 - t_0) \\ &= \rho_0 + \frac{T_2 \rho_\ell (M_{b1} - M_{b0})}{T_1 M_\ell}\end{aligned}\quad (9)$$

Here T_1 , M_{b1} , and M_{b0} refer to the preliminary experiment which gave equation (8). T_2 and ρ_0 refer to any subsequent slush density determination. Since ρ_0 is not the independent variable, however, refer once more to equation (1) and write

$$\rho_0 = \rho_\ell \left(\frac{M_b}{M_\ell} + 1 \right)$$

which can be substituted into equation (9). This gives

$$\rho = \frac{\rho_\ell}{M_\ell} \left[\left(M_b + M_\ell \right) + \frac{T_2}{T_1} \left(M_{b1} - M_{b0} \right) \right], \quad (10)$$

where M_b is the load cell reading taken at the beginning of the time interval T_2 .

Equation (10) is the final working equation for the slush density reference system. It shows all of the variables and systematic parameters which enter into a density determination. To be complete, then,

we should perform a final error analysis of this equation, which has been done in Appendix A. The result shows that the heat leak correction can be incorporated into the slush density determination without addition of any significant new uncertainty.

3. Design Details

Appendix B contains detailed shop and assembly drawings of the weighing cryostat and slush generator in their final configurations. The system was designed and built essentially as described in section 2.2.

3.1 Weighing System

A light-weight (850 g) aluminum weigh-can having a volume of 23.2 ℓ (see Appendix B, figure 2B) is suspended from a load cell which is in a separate housing above the top plate of the weighing cryostat. Between the top plate and the load cell is a cylinder, with windows (see figure 3B) in which are suspended a series of calibration masses. The weigh-can may be lifted from the load cell suspension at any time, and one or more of the calibration masses can be substituted.

The method of weigh-can suspension and counterbalance is shown in figure 6. A flexure beam attached to the lower side of the top plate makes it possible to remove almost all of the empty (submerged) weigh-can mass from the load cell. This provides maximum sensitivity for determination of M_b , the buoyed mass of the solids in the weigh-can. A gum rubber damper at the top of the suspension was found to be helpful in avoiding load transducer oscillations. The gum rubber section also prevents overstraining the suspension when the weigh-can is locked against its stationary cover after a weighing has been completed.

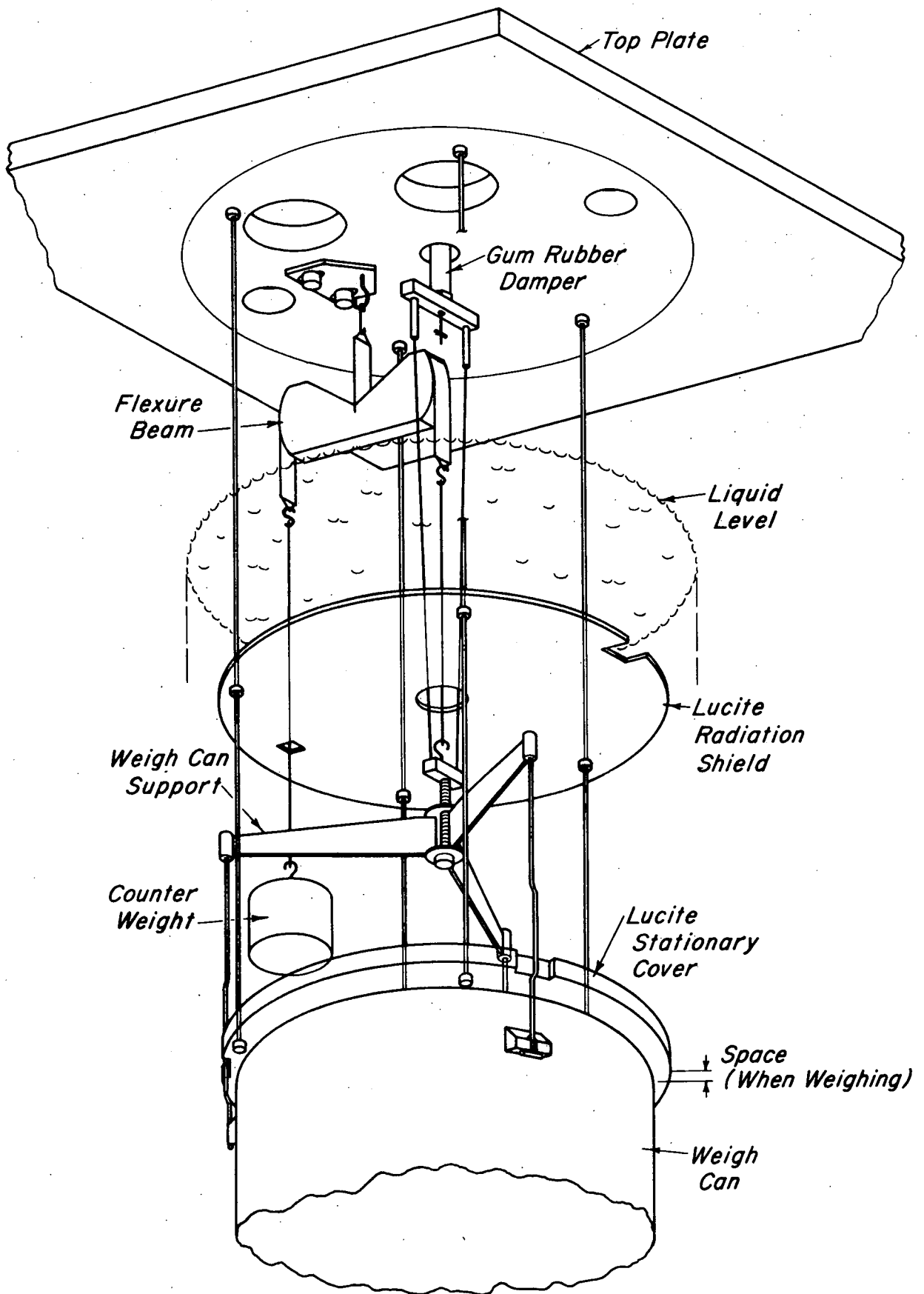


Figure 6. Weigh-Can Suspension System.

The top plate and calibration-weight column were designed to accommodate any load cell or force transducer which could be mounted on the framework provided. Early in the program Mr. Harlan Harman, Chief of the Pressure and Thrust Section in the Instrument and Development Branch of the MSFC kindly provided us with several force-balance units which had been successfully used as differential pressure transmitters. It was suggested that we could attach the top of the weigh-can and calibration-weight suspension system to the midpoint of one bellows of the force-balance differential pressure transmitter, and use it as a sensitive weighing device without any further modification. This proved to be a very satisfactory method for determination of M_ℓ and M_b . The transmitter is an electronic force-balance system in which the DC current required to maintain a null is measured to indicate the force (of gravity, in our application). The unit used on the density reference system has a sensitivity of about 0.05 mA per gram weight, which can be converted to voltage for readout and recording by placing a stable resistor in series with the force motor. A 500 Ω resistor was used, giving a sensitivity of 25 mV/g. Overall short-term stability was ± 0.5 g or better when weighing loads on the order of 100 g.

3.2 Stirring Method

After a determination of average slush density in the weigh-can has been made, it is of no value unless it can be accurately correlated with the reading of another instrument, i. e., it must be correlated with a reading or series of readings from the transfer standard which is being calibrated. The transfer standard transducer will usually be located inside the weigh-can volume; its weight will be supported by the fixed plate which forms the weigh-can cover between weighings. When the can

is lowered for weighing it no longer contacts the cover, so it and attachments to it are not weighed. The important point, however, is that the transfer standard transducer must sense the average density of the weigh-can contents. This can be accomplished only to the extent that the slush is kept homogeneous while density transducer readings are being taken. An effective stirring arrangement is accordingly of paramount importance to usefulness of the density reference system.

An important restraint on design of the stirring method was the fact that any blades or surfaces wide enough to effectively move the solids would also support a significant amount of solids when the stirring was stopped for a weighing. If the blades were attached to the "outside world", a new uncertainty in M_b would be introduced. To circumvent this problem, the magnetic method illustrated in figure 7 was designed. A low-mass rotor inside the weigh-can carries eight slender bar magnets which link flux with eight large alnico bar magnets attached to an iron wheel which surrounds the cryostat. The various dimensions and materials are as shown in figure 7.

A variable-speed air motor and a friction drive arrangement are used to turn the large magnet wheel. Strength of flux linkage was found to be adequate for all conditions except when starting to stir a full load of well-settled heavy slush.

The magnet wheel and air motor assembly are supported on an aluminum platform which can be lowered by means of cables into a pit beneath the cryostat. This arrangement allows the magnetic linkage to be removed for accurate weighing of the slush. The same aluminum platform supports the cryostat shell (dewar) and lowers it into the pit, along with the magnet wheel, when access to the interior of the cryostat is required.

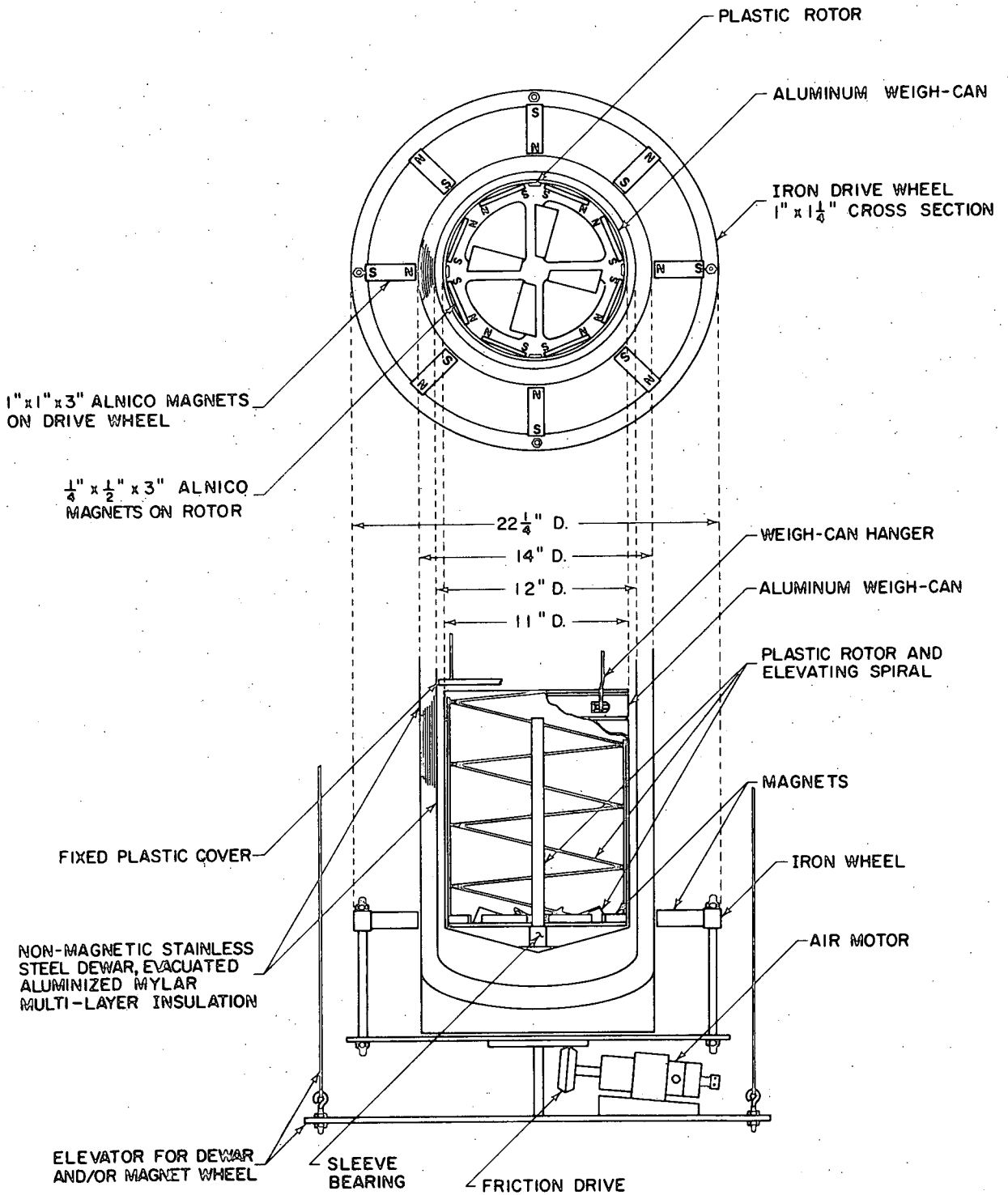


Figure 7. Magnetic Stirring Method.

A second restraint on the stirring method was the requirement that as much as possible of the weigh-can interior be kept open for installation of density-sensing devices. This led to the rotating plastic spiral which is shown in figure 8. The combined stirring and elevating action of the four-bladed plastic rotor and four-turn spiral provides a very effective stirring action. Homogeneity of the stirred slush can be tested by observing the readout value of any stable density transducer while changing the speed of the stirring rotor. If there is no noticeable change in density readout, it can be assumed that the liquid-solid mixture is homogeneous over the chosen range of stirring speeds.

3.3 System Operation

Auxiliary systems required to provide the hydrogen slush in the weighing cryostat include the slush generator, liquid supply vessel, vacuum-jacketed transfer lines, pumping capability for the "freeze-thaw" method of slush production^[4], and hydrogen and helium gas supplies for pressurization, purging, and transfer operations.

Figure 9 is a photograph of the control panel board, which incorporates a schematic diagram of the system. From left to right are represented the vacuum pump, water-warmed heat exchanger, slush generator, and weighing cryostat. Figure 10 is a general view of the cryostat assembly as seen from the left end of the control panel during a run. In the right-hand side of the dewar support framework is the slush generator, which is connected with a valved and vacuum-jacketed transfer line to the 175-liter supply dewar at the far right of the picture. In the foreground is a 50-liter liquid nitrogen dewar for filling the generator radiation shield. The weighing cryostat is in the left-hand portion of the framework and connects to the generator with a second vacuum-jacketed transfer line, which can be seen above the top plates. The

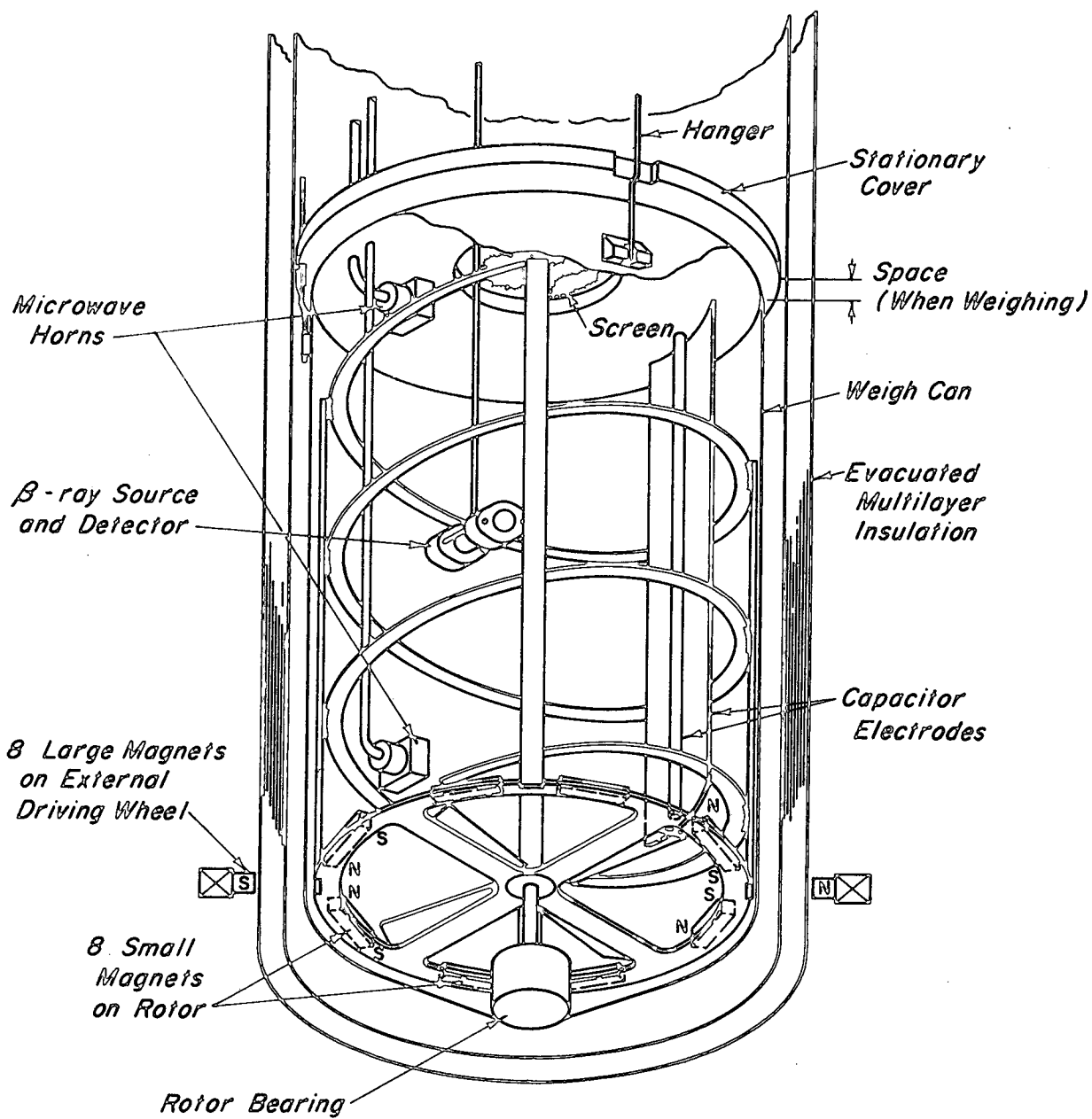


Figure 8. Weigh-Can Interior Showing Stirring Rotor and Density Transducers.

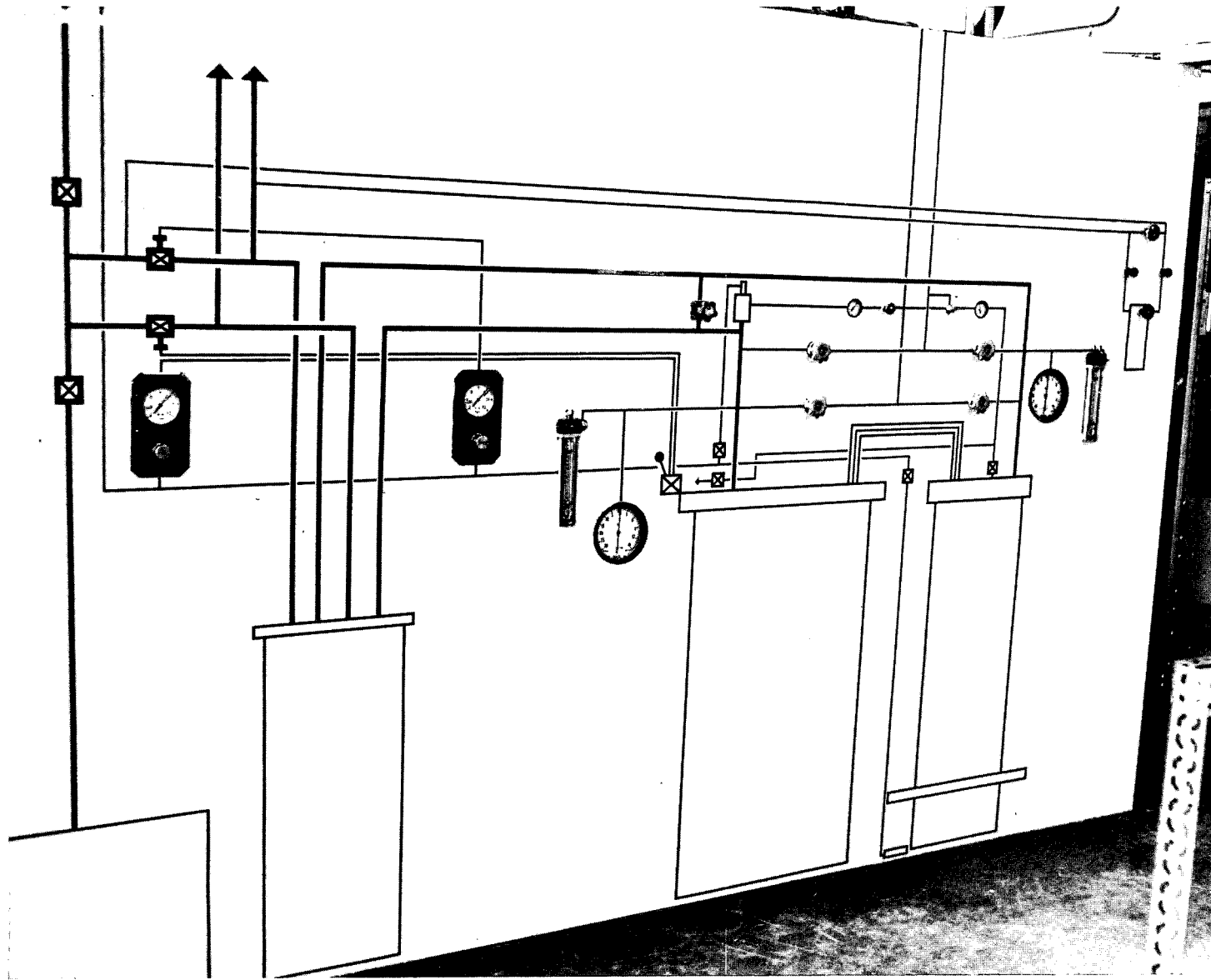


Figure 9. Panel Board and Flow Diagram.

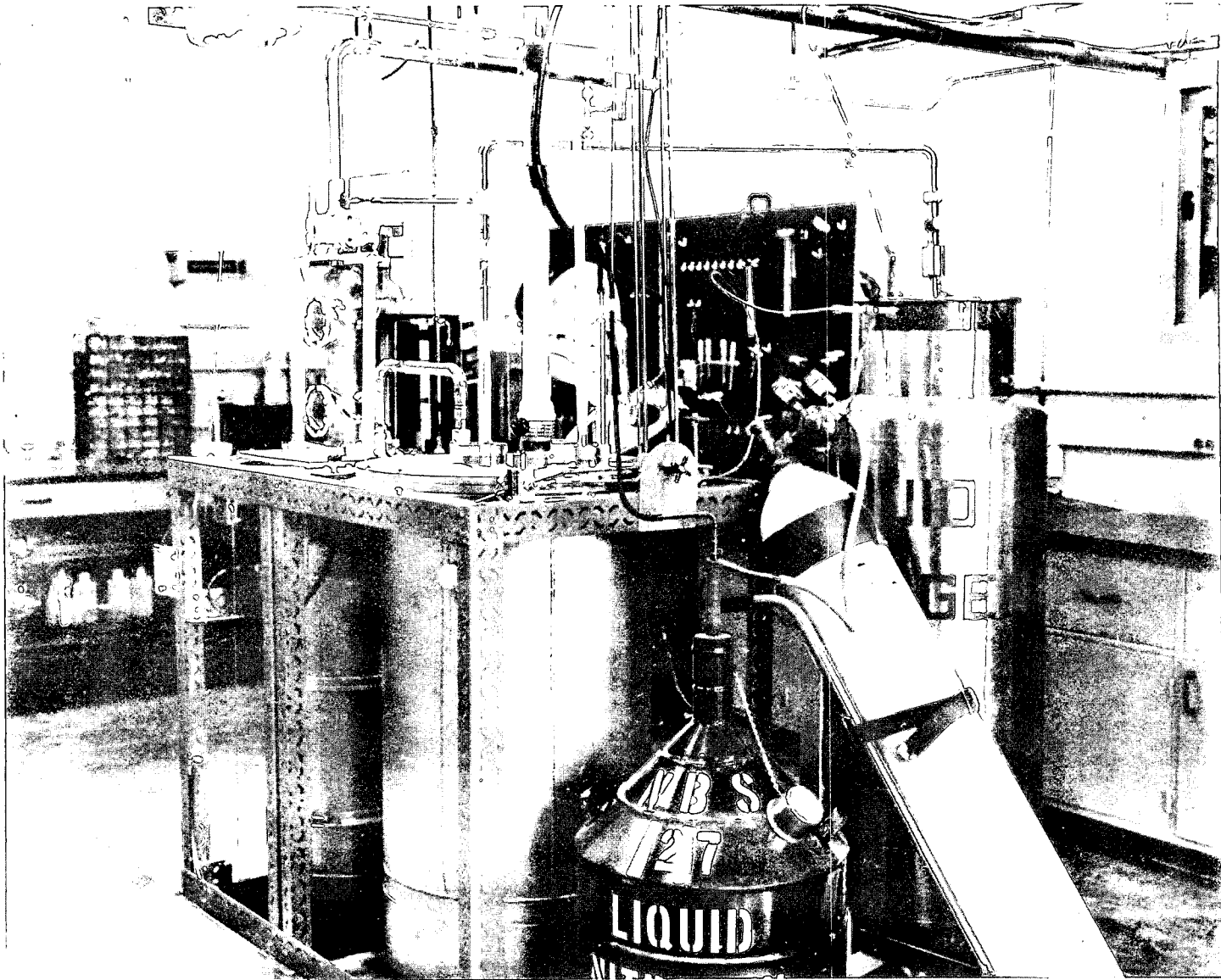


Figure 10. General View of Assembled System.

calibration-weight column and force-balance unit are above the cryostat; the magnet drive wheel is out of sight in the pit below the cryostat. Figure 11 shows the weighing cryostat open, as it might appear between runs, with the weigh-can exposed and ready to be removed from its suspension.

The general operation procedure is as follows:

- (1) Purge and pump cycles for cleanup of system.
- (2) Fill generator radiation shield with liquid nitrogen.
- (3) Connect 175-liter liquid hydrogen supply dewar to generator.
- (4) Fill generator with LH_2 and simultaneously cool weighing cryostat.
- (5) With generator full and some liquid in weigh-can, bring both vessels to triple-point pressure.
- (6) Fill weigh-can with triple-point liquid and weigh. (This gives M_ρ , one of the system constants, and does not need to be repeated for each run.)
- (7) Transfer more liquid from generator, overflowing the weigh-can, and fill dewar. Maintain liquid at triple point with throttling valves and manostat.
- (8) Adjust force-balance unit to zero reading.
- (9) Generate slush, and transfer to weigh-can. Transfer surplus liquid back to generator and repeat until desired solid fraction resides in weigh-can. (Be sure that weigh-can is in closed position for this operation.)
- (10) Stir and read density as shown by transducer under test. Log on magnetic tape.
- (11) Lower the magnetic drive wheel a foot or more below the cryostat.

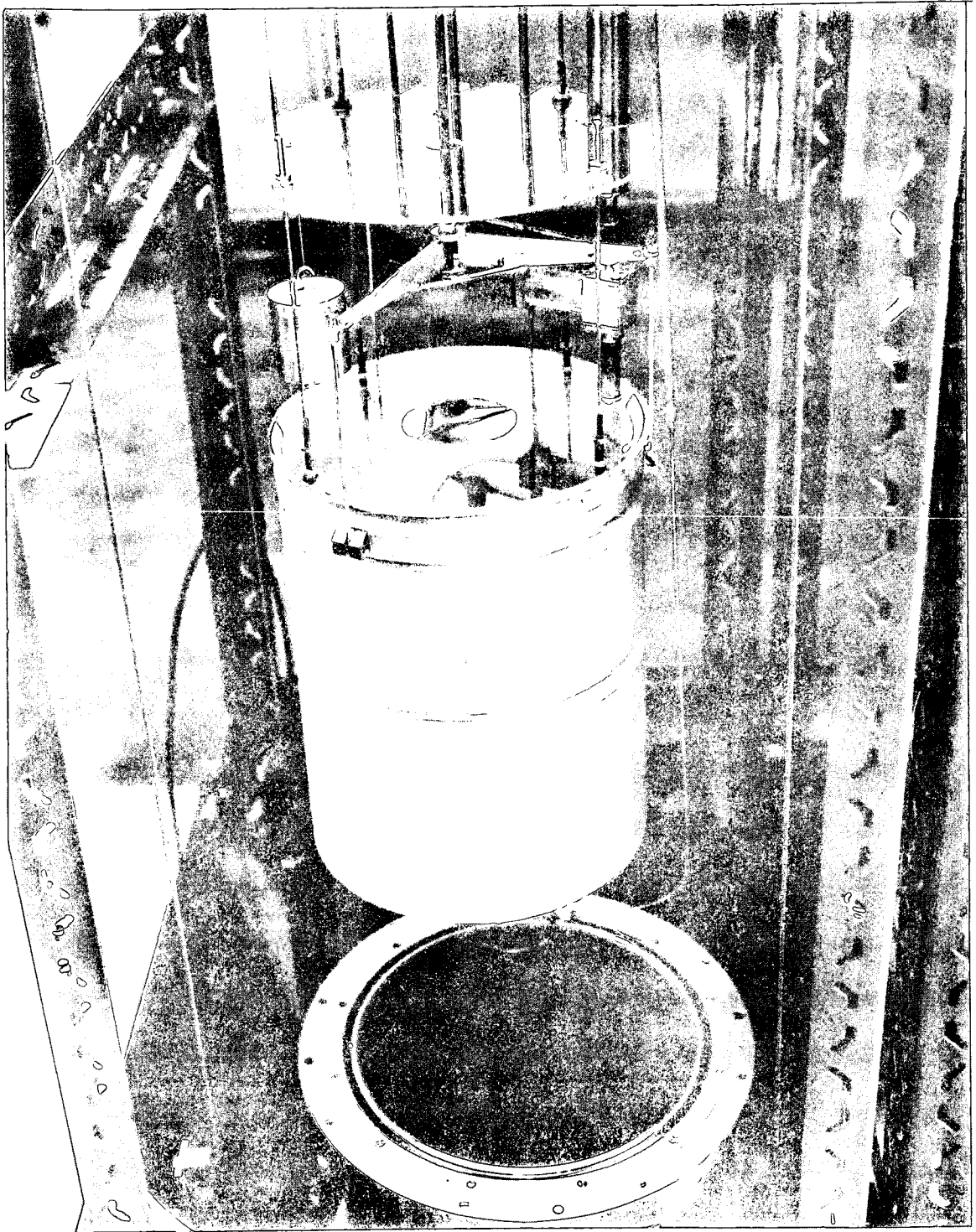


Figure 11. Cryostat Interior with Weigh-Can.

(12) Lower the weigh-can onto the force-balance suspension and observe readout on digital voltmeter and parallel-connected chart recorder. Log on magnetic tape. Alternate weigh-can with calibration weights until maximum accuracy is obtained.

(13) To make the heat leak correction, observe the time vs. weight drift and record data required for extrapolation back to the density transducer readout time.

(14) Repeat steps (9) through (13) as necessary.

4. Density Transducer Tests

Of the many measurable effects which are known to vary with density, five were chosen for study as hydrogen slush density transducers and possible development as a slush density transfer standard. The five methods were:

1. Attenuation of beta radiation,
2. Attenuation of gamma radiation,
3. Dielectric change in a fixed capacitor,
4. Microwave transmission characteristics, and
5. Velocity of sound.

Methods 3 and 4 are based on changes in relative dielectric constant and were found to be the best candidates.

4.1 Beta-Ray Attenuation

If a source of beta radiation is placed a suitable distance from a detector in liquid or slush hydrogen, the count-rate of beta particles reaching the detector is an accurate indicator of the density of the fluid. A system based on this principle was built by a private company under NASA contract and was extensively studied in the density reference system.

The beta-ray attenuation system uses sealed sources containing strontium-90 and encapsulated "surface barrier" radiation detectors. Each detector contains a 50-mm² active area, 500 microns thick, housed in a stainless steel capsule with a 0.002-inch-thick stainless steel window. The source housing contains a sealed 15 millicurie strontium-90 beta source. For additional safety, the source housing is fabricated with a second stainless steel window 0.001-inch thick. Source-to-detector spacing is made variable by means of small rods sliding through holes in the detector housing. See figure 12.

Beta particles from the source are absorbed by the detector, thereby producing minute electrical pulses. These are fed through a preamplifier to a linear amplifier which shapes and further amplifies the pulses, after which they go to a discriminator where those below a given energy threshold are blocked out. The discriminated pulses can then be counted directly, or they can be converted to a DC signal proportional to the pulse rate. The method is diagrammed in figure 13.

The source and detector assembly shown in figure 12 has windows spaced 4 cm apart. A 1/4-inch stainless steel tube supports this "probe", provides means for evacuation and helium back-fill of the detector housing, and carries the signal lead. The source capsule is "permanently" sealed, with no provision for evacuation or back filling. This was a safety judgment, but is presently subject to some question.

Parameters investigated in the density reference system were source-to-detector spacing, discrimination level, reliability, and both long and short term accuracy.

Since hydrogen slush is normally a non-homogeneous mixture, an ever present problem for any density transducer is representative

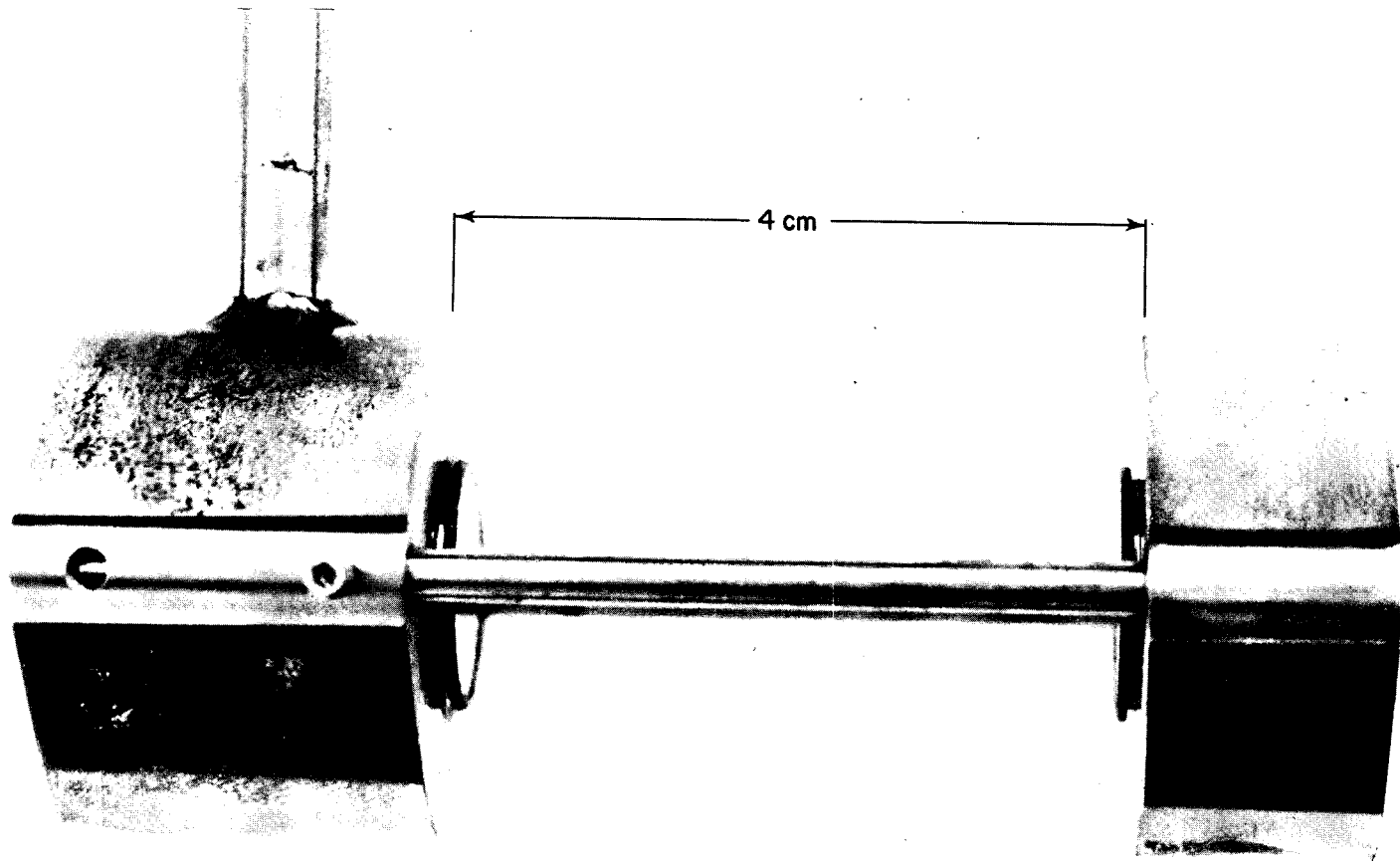


Figure 12. Beta-Ray Source and Detector.

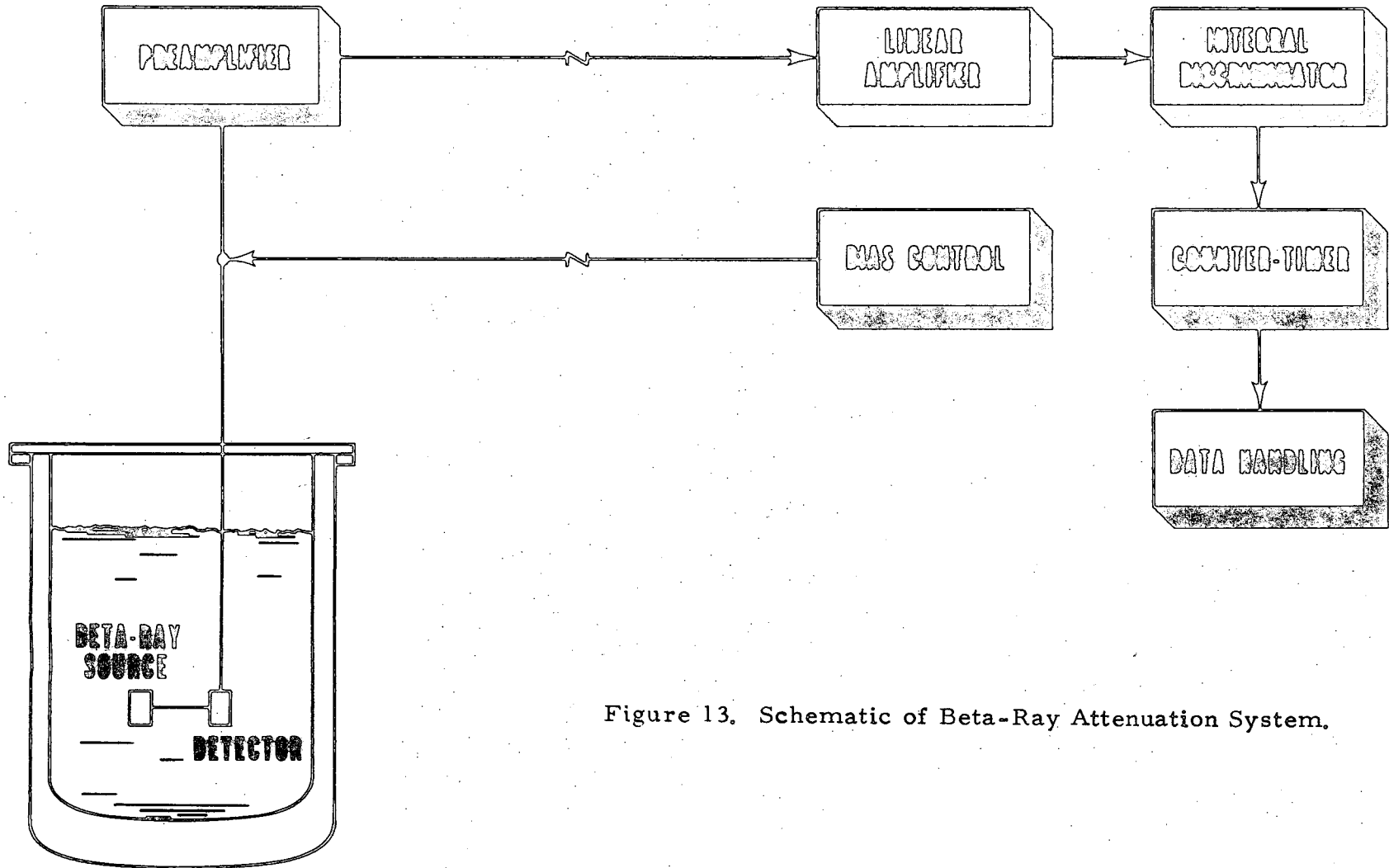


Figure 13. Schematic of Beta-Ray Attenuation System.

sampling. For the beta-ray attenuation system, this requires adequate separation between source and detector windows, but if spacing is too great there will not be a sufficiently high count for fast response or good statistics. After a considerable amount of experimentation it was determined that a 4-cm spacing and an energy discrimination level which gave approximately 3×10^4 counts per second at triple-point liquid hydrogen density was a good set of conditions for work in the density reference system.

Data were first taken with a strip-chart recorder connected to the analog output provided by the equipment, but this was soon replaced by a counter-timer with a magnetic tape printer, so the data reduction could be done by computer. The computer program produced means, slopes, and standard deviations, as well as machine-made graphs of density vs. count-rate. The latter relationship was found to be linear within the limits of experimental error. On a few plots a slight change in the slope at triple point was found, i. e., a small difference in $\Delta c / \Delta \rho$ when going from the liquid into the slush region, but these were subsequently attributed to imperfect mixing of the slush. The slope, which represents sensitivity of the method, averaged about 5×10^3 counts s^{-1} per $kg m^{-3}$ density change.

A series of runs with two of the probes in the density reference system covered a period of six months and involved approximately 10 complete cooldown/warmup cycles. Performance was relatively stable over this period. Data from the last four of these runs, representing more than 1000 stable count-rate vs. density observations, were carefully analyzed. It was concluded that the equipment was capable of measuring hydrogen liquid or slush density with an uncertainty of no more than one percent over the range of 71 to 81 $kg m^{-3}$, i. e., from

normal boiling liquid to 0.45 solid fraction, with no indication of loss of accuracy at the extremes of this range. The uncertainty is based on a statistical scatter of the count rates within a $\pm 2\sigma$ error band, i. e., 95 percent confidence, and also includes the 0.2 percent uncertainty contributed by the density reference system.

Subsequent experience with these and the additional three detectors provided did, however, turn up some serious long-range stability problems. All of the detectors became noisy over a period of less than a year of service, and two of the five yielded very little satisfactory data. The two detectors which were extensively tested in the density reference system were later installed in a one-m³ vessel used for solid fraction up-grading. One detector performed well over a period of several weeks; the other exhibited an erratic base count-rate and gave very little useful data in the new installation. Finally, the source housing on one of the probes suffered a ruptured window. The inner seal remained intact, so no contamination resulted, but the incident casts doubt on the method of source packaging.

After completion of the program all of the detectors were returned to the manufacturer for examination and reconditioning. In addition to detector breakdown, complexity of the associated electronics is a disadvantage of the beta-attenuation system. For point density sensing, however, it is a workable method, and could be used as a transfer standard for providing traceability to a density reference system.

4.2 Gamma Ray Attenuation

Our experience with gamma ray attenuation for liquid and slush hydrogen density measurement has been documented in other publications. [5, 6] Two densitometers of this type have been used at NBS. The densitometers used cesium 137 sealed sources, one 4 curies, the other

17 curies, and ionization chambers as detectors. Sources and detectors were mounted externally on opposite sides of the storage vessel; the beam penetrated the walls of the vessel as well as the contained hydrogen. For both vessels the beam traversed 0.76 m of hydrogen liquid or slush, and a little more than half of the attenuation took place in the hydrogen.

It was determined that the response (ionization current) was accurately linear with density, so frequent checks on calibration of the instruments could be made by using vapor pressure of well-stirred liquid to determine a range of liquid densities from normal boiling to triple point, then extrapolating this line into the slush region in order to read out slush densities. Sensitivity figures depend on the dropping resistance and amplifier used to convert the ionization current to a measurable millivolt signal. Typical values were 0.7 mV per kg m^{-3} change in hydrogen slush density.

The only real problem experienced with the gamma-ray densitometers was drift, which was apparently related to small temperature changes in the environment of the amplifiers and high-megohm resistors. This area requires refinement, but should not be an insurmountable problem. There are, however, three basic disadvantages to these systems:

- (1) Not transferable without loss of calibration,
- (2) Relatively high radiation hazard, and
- (3) Stronger sources required for larger vessels.

In the early part of the density reference system program, it was assumed that the gamma-ray method should be evaluated in the weighing cryostat, and bracketing was provided to accommodate the 4-curie-source system. As the program progressed, however, it was apparent that the

disadvantages listed above virtually eliminated this form of instrumentation as a density transfer standard, and that nothing would be gained by further testing of the gamma system in its available form. It is possible that a gamma-ray source and detector system could be developed for placement inside a storage vessel. This might be similar to the beta-ray attenuation system, but without the limitation of short source-to-detector path lengths. Such systems have been proposed and if one becomes available it would be profitable to test it in the density reference system.

4.3 Capacitance Method

For any capacitor of simple, fixed geometry, the measured electrical capacitance varies directly with the dielectric constant of the medium between the electrodes. The relation between dielectric constant and density is, for hydrogen, quite well represented by the Clausius-Mossotti equation

$$\frac{\epsilon - 1}{\epsilon + 2} = P\rho \quad (11)$$

where

ϵ is dielectric constant

ρ is density

P is specific polarization, a property having dimensions of reciprocal density.

The polarization "constant" P has been found to increase by about 0.1 percent when hydrogen changes from liquid to 0.5 solid fraction at triple-point pressure. [6]

The dielectric constant for triple-point liquid hydrogen is 1.25158.^[6] The dielectric constant for any slush sample can therefore be obtained with high accuracy from the ratio of the capacitance of the condenser with sample to the capacitance in triple-point liquid. Having determined ϵ , the density of slush is calculated from the Clausius-Mossotti equation. Table 1 is a tabulation of ϵ , ρ , and P for hydrogen from normal-boiling to 0.5 solid fraction.

Equation (11) can be written

$$\epsilon = \frac{1 + 2 P \rho}{1 - P \rho} = \frac{(1 - P \rho) + 3 P \rho}{1 - P \rho} = 1 + \frac{3 P \rho}{1 - P \rho}.$$

The variation in ϵ is then given by

$$d\epsilon = \left(\frac{\partial \epsilon}{\partial P}\right) dP + \left(\frac{\partial \epsilon}{\partial \rho}\right) d\rho = \frac{3\rho dP + 3P d\rho}{(1 - P\rho)^2}. \quad (12)$$

Triple point liquid density is 77.017 kg/m³; 0.5 solid fraction slush density is 81.526 kg/m³. The corresponding polarizability values are 1.0046 and 1.0056 cm³/g. Using the average of these values for ρ and P and the difference between the extremes for dP and $d\rho$ we have

$$\begin{aligned} d\epsilon &= \frac{3 \times 0.07927 \times 0.0010 + 3 \times 1.0051 \times 0.00451}{(1 - 1.0051 \times 0.07929)^2} \\ &= 2.81 \times 10^{-4} + 1.61 \times 10^{-2}. \end{aligned}$$

This is the change in ϵ which results when hydrogen changes from triple-point to 0.5 solid fraction slush. The first term is due to the change in polarizability; the second term is due to the change in density. If we start from the triple-point liquid value of $\epsilon = 1.25158$, the polarizability term accounts for a change in ϵ of 0.02 percent, while the density term accounts for a 1.3 percent change.

Table 1

Density, Dielectric Constant, and Polarizability
for Hydrogen from Normal Boiling to 0.5 Solid Fraction Slush

ρ (g cm ⁻³)	ϵ	P (cm ³ g ⁻¹)	dP/d ϵ
.37376	1.22971	1.0051	
.37385	1.23000	1.0051	.0034303
.37113	1.23100	1.0051	.0076160
.37142	1.23200	1.0050	.0074520
.37171	1.23300	1.0050	.0072000
.37200	1.23400	1.0050	.0071245
.37229	1.23500	1.0050	.0060610
.37257	1.23600	1.0050	.0067076
.37276	1.23700	1.0040	.0066344
.37314	1.23800	1.0040	.0064714
.37343	1.23900	1.0040	.0063085
.37372	1.24000	1.0040	.0061457
.37400	1.24100	1.0040	.0050831
.37429	1.24200	1.0040	.0050207
.37457	1.24300	1.0040	.0056584
.37486	1.24400	1.0040	.0054060
.37514	1.24500	1.0040	.0053340
.37543	1.24600	1.0047	.0051704
.37571	1.24700	1.0047	.0050107
.37600	1.24800	1.0047	.0048401
.37629	1.24900	1.0047	.0046877
.37657	1.25000	1.0046	.0045265
.37686	1.25100	1.0046	.0043654
.37714	1.25150	1.0046	
.37741	1.25200	1.0046	.0016505
.37769	1.25300	1.0047	.0073003
.37797	1.25400	1.0040	.0071717
.37824	1.25500	1.0040	.0060633
.37852	1.25600	1.0040	.0067551
.37880	1.25700	1.0040	.0065471
.37908	1.25800	1.0050	.0063303
.37937	1.25900	1.0051	.0061317
.37965	1.26000	1.0051	.0050243
.37993	1.26100	1.0050	.0057171
.38021	1.26200	1.0053	.0055101
.38049	1.26300	1.0053	.0053033
.38077	1.26400	1.0054	.0050066
.38105	1.26500	1.0055	.0048000
.38133	1.26600	1.0055	.0046040
.38161	1.26700	1.0056	.0044080
.38189	1.26723	1.0056	

Reproduced from
best available copy.

The above analysis applies when all of the dielectric between the capacitor electrodes is either liquid or slush, i. e. , when the capacitor is totally submerged and when the density distribution is uniform. Non-uniform distribution will result if the electrode spacing is too close and/or if mixing of the slush does not produce a homogeneous fluid.

After some preliminary testing of various capacitor configurations, the design shown in figure 14 was developed for testing in the density reference system. The capacitor is composed of a 1.27-cm-diameter brass rod 33 cm long which is rigidly supported 0.64 cm away from a section of thin-wall brass cylinder. The cylinder section has a radius of 8.5 cm, arc length of 8.3 cm, and extends 2.5 cm beyond the rod at each end. The section of cylinder forms one electrode; the adjacent rod is the other. The capacitance in triple-point liquid (77.017 kg m^{-3}) was 18.667 pf. The capacitor was located near the perimeter of the weigh-can, and the stirring pattern was such that solids were raised and swirled in a circular path between the electrodes.

From the assumption that the capacitance is directly proportional to the relative dielectric constant, it follows that

$$C = A\epsilon = A(1.25158) = 18.667 \text{ pf,}$$

giving a geometrical constant of

$$A = 14.915 \text{ pf,}$$

which is the "empty space" capacitance. Since a capacitance measurement of 18 pf having an uncertainty of ± 0.001 pf or less can readily be obtained with shielded leads and a good three-terminal capacitance bridge, it is apparent that the relative dielectric constant, and hence the apparent density of the fluid between the electrodes, can be obtained with high accuracy.

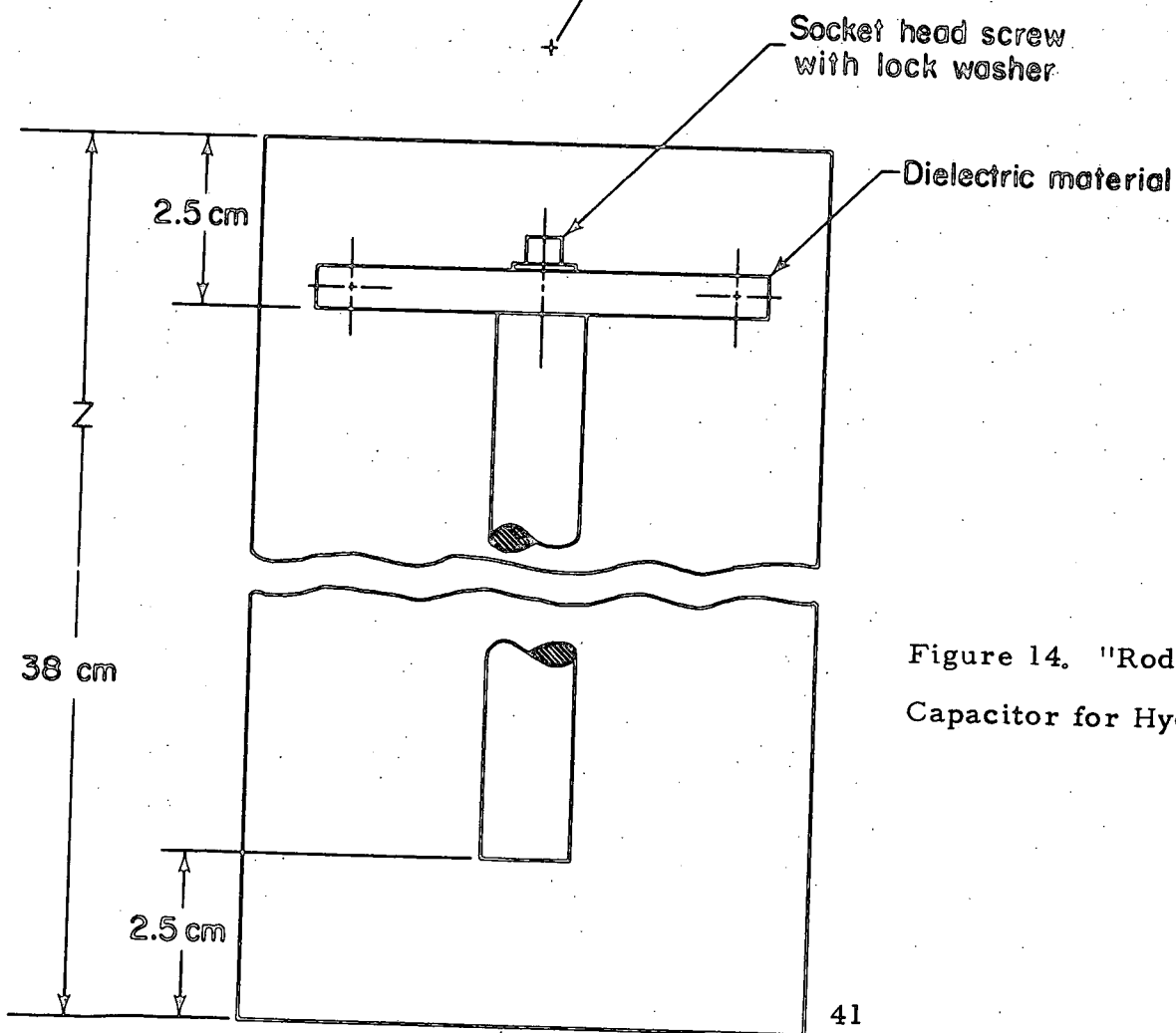
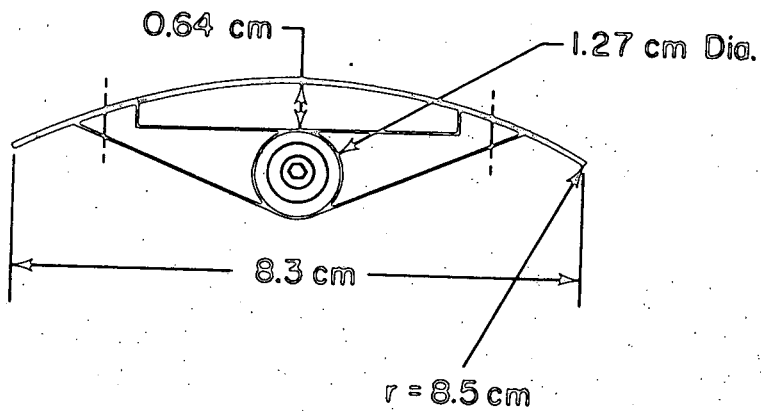


Figure 14. "Rod to Blade"
Capacitor for Hydrogen Slush.

A capacitance uncertainty of 0.001 pf in 18 pf is about 0.005 percent, so an uncertainty in ϵ of 0.01 percent is not unreasonable. From equation (12) it is possible to obtain the corresponding uncertainty in density. Using density and polarizability values for 0.5 solid fraction slush, and assuming 0.1 percent uncertainty in the value of P, gives the following:

$$\rho = 81.526 \text{ kg m}^{-3} = 0.0815 \text{ g cm}^{-3}$$

$$P = 1.0056 \text{ cm}^3 \text{ g}^{-1}$$

$$dP = 1.0056 \times 10^{-3}$$

$$d\epsilon = 1.2679 \times 10^{-4}$$

Then equation (12) is

$$d\epsilon = \frac{3(0.0815 \times 1.0056 \times 10^{-3} + 1.0056 \times d\rho)}{(1 - 1.0056 \times 0.0815)^2}$$

$$1.2679 \times 10^{-4} = \frac{0.2459 \times 10^{-3}}{0.8427} + \frac{3.0168 d\rho}{0.8427}$$

$$= 2.918 \times 10^{-4} + 3.580 d\rho$$

$$-1.650 \times 10^{-4} = 3.580 d\rho$$

$$d\rho = 4.61 \times 10^{-5} \text{ g/cm}^3$$

$$\frac{d\rho}{\rho} = \frac{4.61 \times 10^{-5}}{8.15 \times 10^{-2}} = 5.66 \times 10^{-4}$$

$$= 0.057\%$$

The conclusion of the analysis is that the apparent density of the slush between the capacitor electrodes can be obtained with an accuracy which exceeds that of the density reference system, the reasons being that (1) the dielectric constant of triple-point liquid hydrogen is better known than the density, and (2) it is easier to make accurate comparisons of capacitors than masses.

The principal values of testing capacitors in the density reference system were (1) to develop a good capacitor geometry for representative sampling, and (2) to develop the best possible stirring pattern for maintaining a homogeneous mixture of slush.

The capacitance method can, of course, be used for "point" as well as "zone" sensing of liquid or slush density. A popular capacitor design for sensing at a given level in a vessel is a "bullseye" made up of several concentric rings of small cross section rod or wire. Tests in the density reference system were made to determine the minimum spacing between rings which would allow slush to fall through rather than be supported by a horizontal "bullseye" capacitor.

It was found that very slight agitation of the fluid, or very slight vibration of the capacitor, such as would usually be present in containers under field conditions, would prevent the settling solids from bridging across rings spaced one cm apart. Capacitance-type point sensors of this kind will give the density in the immediate vicinity of the probe, and from the density the phase, whether vapor, liquid, or slush, at the level of the sensor will be apparent.

4.4 Microwave Method for Dielectric Measurement

The capacitance measurements described above result in density determination because the dielectric constant of the fluid between the capacitor electrodes can be derived from the capacitance. An alternative method for measurement of dielectric constant is based on time delay in propagation of a microwave signal. The density then follows from the Clausius-Mossotti function. Two advantages of the microwave method are:

1) The sample is an unrestricted column of fluid between two microwave horns which can be spaced any desired distance apart.

2) The output signal is a frequency, which can be easily transmitted to a data center or, alternately, can be converted to a proportional voltage signal.

The method is illustrated in figure 15. The microwave signal generator is swept in frequency over its spectrum. The signal travels from the generator to the mixer by two paths, the reference and the test channels. It is assumed that both paths are dispersionless.

The instantaneous frequencies of the two signals fed into the mixer are designated f and f' and both vary linearly at the same time rate. The frequencies differ, however, because of the time delay in the signal going through the fluid in the cryostat.

The test signal undergoes a total phase shift given by

$$t = \frac{d\varphi}{d\omega} = \frac{l}{c} \sqrt{\epsilon}, \quad (14)$$

where t is the group delay time, l is the distance between horn faces, and c is the free-space velocity of propagation.

A finite change in the dielectric constant of the fluid produces a finite change in the group delay time,

$$\frac{\partial t}{\partial \epsilon} \Delta \epsilon = \Delta t = \frac{l}{2c} \frac{\Delta \epsilon}{\sqrt{\epsilon}}.$$

The frequency of the signal generator is swept over the bandwidth $(f_2 - f_1)$ in time t_s . The average rate of change of frequency is,

$$\frac{\Delta f}{\Delta t} = \frac{(f_2 - f_1)}{t_s}.$$

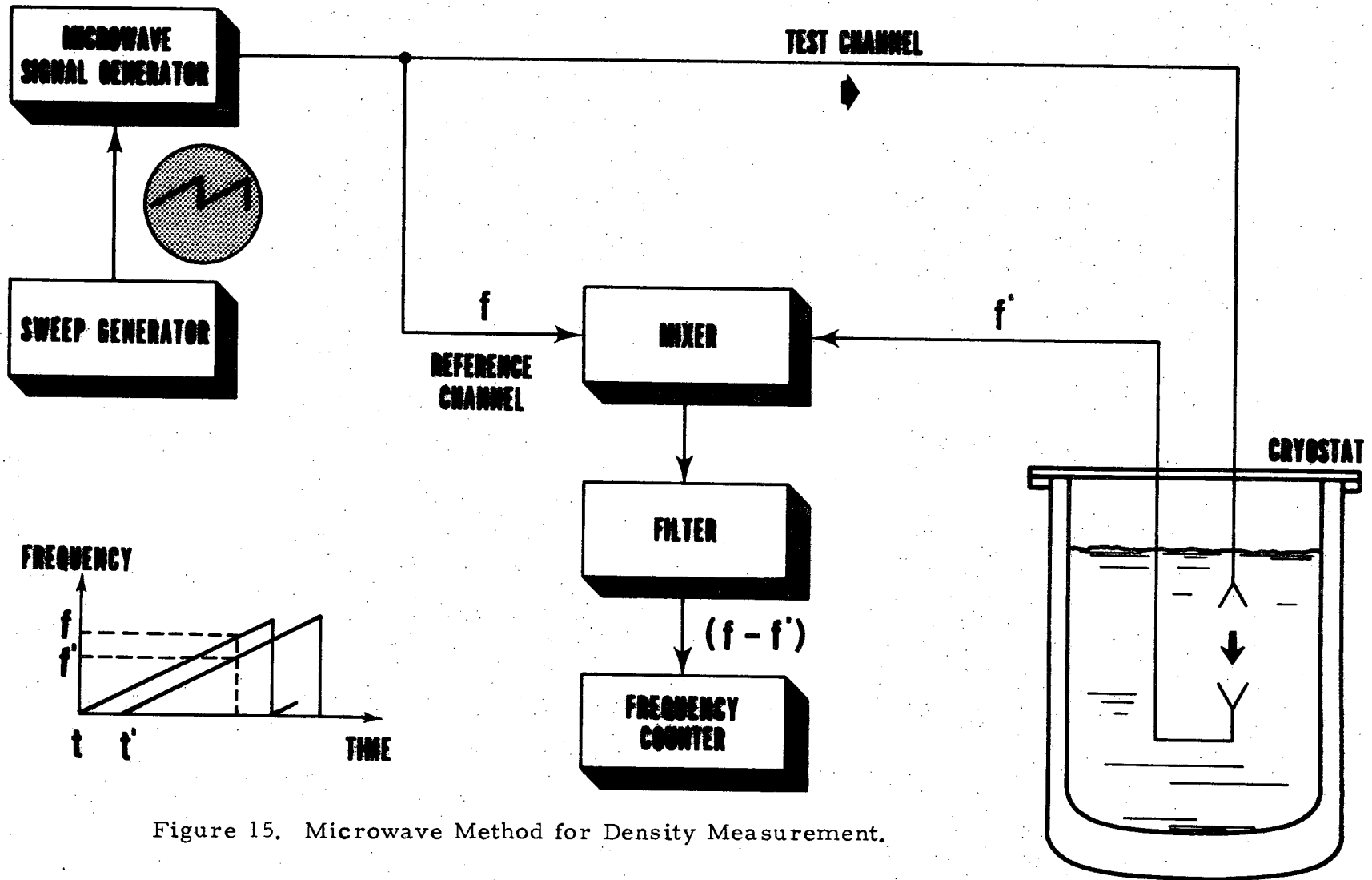


Figure 15. Microwave Method for Density Measurement.

The difference between the instantaneous reference and test frequencies is

$$\Delta f = \frac{(f_2 - f_1) \ell}{2ct_s \sqrt{\epsilon}} \Delta \epsilon,$$

from which

$$\Delta \epsilon = \frac{2ct_s \sqrt{\epsilon}}{(f_2 - f_1) \ell} (\Delta f). \quad (15)$$

The mixer, then, is essentially a product demodulator. Its output spectrum contains f and f' frequency sums and differences, but all except the difference, $f_2 - f_1$, are filtered out.

An analysis of the variation in equation (15) can be made to estimate the accuracy with which the change in dielectric constant ($\Delta \epsilon$) can be measured. Typical values and associated uncertainties are as follows:

t_s	=	10^{-3} seconds; $dt_s = \pm 10^{-5}$ seconds, the sweep period of the signal generator.
c	=	3×10^{10} cm/s; $dc = \pm 1$ cm/s, the free space velocity of electromagnetic radiation.
ϵ	=	1.25158, $\sqrt{\epsilon} = 1.119$; $d\sqrt{\epsilon} = \pm 10^{-5}$, the dielectric constant of triple-point liquid hydrogen.
Δf	=	50 Hz; $d(\Delta f) = \pm 0.1$ Hz, a typical frequency shift and the uncertainty of the counter used.
$(f_2 - f_1)$	=	3×10^9 Hz; $d(f_2 - f_1) = \pm 10^7$, the frequency sweep of the generator.
ℓ	=	90 cm; $d\ell = \pm 0.2$ cm, the distance between horn faces.

The root mean square error is

$$\begin{aligned}
 \left[\frac{d(\Delta\epsilon)}{\Delta\epsilon} \right]_{\text{rms}} &= \left[\left(\frac{10^{-5}}{10^{-3}} \right)^2 + \left(\frac{1}{3 \times 10^{10}} \right)^2 + \left(\frac{10^{-5}}{1.119} \right)^2 + \left(\frac{10^{-1}}{50} \right)^2 \right. \\
 &\quad \left. + \left(\frac{10^7}{3 \times 10^9} \right)^2 + \left(\frac{2 \times 10^{-1}}{90} \right)^2 \right]^{\frac{1}{2}} \\
 &= (10^{-4} + 10^{-21} + 8 \times 10^{-11} + 4 \times 10^{-6} + 10^{-5} + 5 \times 10^{-6})^{\frac{1}{2}} \\
 &= 1.1 \times 10^{-2} = 1.1 \text{ percent.}
 \end{aligned}$$

Conversion from $\Delta\epsilon$ to $\Delta\rho$, i. e., from change in dielectric constant to change in density, is again by way of the C-M function, as explained in section 4.3.

Most of this error in the $\Delta\epsilon$ measurement results from uncertainty in the sweep period of the signal generator, which could be improved with a better instrument. It is likely that an uncertainty of ± 0.5 percent or less could be achieved by this microwave method of slush density measurement, but we were not able to develop readout instrumentation to demonstrate this within the scope of the density reference system contract.

One of the principal difficulties experienced with the microwave studies in the density reference system was the lack of sufficient open space in the weigh-can interior. This was partly because the program schedule required simultaneous evaluation of more than one transducer, but there was also considerable difficulty because of the proximity of the stirring rotor and spiral. These moving surfaces caused spurious reflections of the microwave signal, resulting in uncertainty in the "true" time delay measurement.

To obtain additional data, under more favorable conditions, a swept frequency microwave system was installed in the one-m³ hydrogen slush upgrading vessel. Figure 16 shows data obtained in the upgrader for various levels of settled slush. The microwave horn faces were 90 cm apart; the lower horn face was 20 cm above the dewar bottom. The settled slush depths shown in figure 16 refer to distances above the lower horn face. The balance of the sample column, reaching to the upper horn, is assumed to be triple-point liquid. The effective dielectric constant thus becomes a direct function of the settled slush level.

The system was normalized, i. e., Δf set equal to zero, with triple-point liquid between the horns. When slush was introduced, a frequency shift proportional to the change in effective dielectric constant was observed, as shown in figure 16. The mean or effective density then derives from the Clausius-Mossotti function; the deviation from linearity of ϵ vs. ρ in the C-M function is about 0.8 percent over the density range from triple point liquid to freshly settled slush having a density of about 81.1 kg/m³.

An independent estimate of density can be made by assuming a density for settled slush based on previous experience. A reasonable estimate for fresh settled slush is 81.1 kg/m³, i. e., a solid mass fraction of 0.45. The average density of the column then becomes the weighted averages of the triple point liquid and settled slush depths. A density scale based on this assumption is shown on the right side of figure 16.

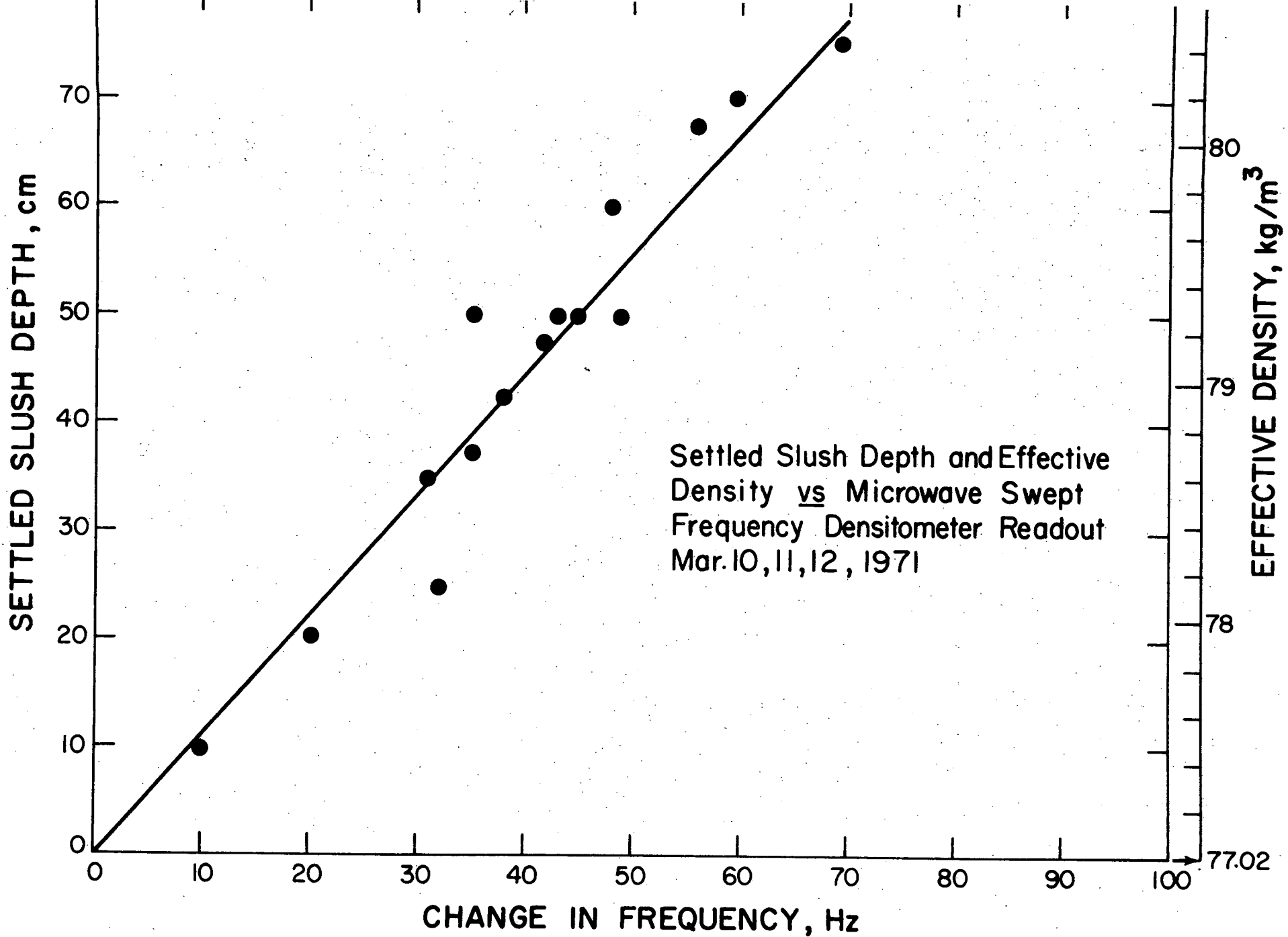


Figure 16. Settled Slush Density Data Obtained by Microwave Method.

This is simply another way of expressing the settled slush depth, and the two vertical scales are proportional to one another. A test of the method is to plot the frequency shift against either vertical scale and observe the scatter of the data points and the deviation from linearity. The data indicate that the method can be used to locate a settled slush level to within about five centimeters if the above assumptions regarding liquid and settled slush densities are made. Conversely, if an unknown density distribution is assumed, the mean density can be determined with a sensitivity of a few tenths of a kg/m^3 . It appears, at this point, that some refinement of readout instrumentation is all that would be required to make this method competitive with the more common capacitance measurement method.

4.5 Velocity of Sound

One more method of hydrogen liquid and slush density sensing was tested in the density reference system. This was velocity of sound, which has been measured as a function of density in fluid parahydrogen by Younglove^[7]. His results are shown plotted in figure 17, from which it is apparent that a density change of 0.001 g cm^{-3} (1 kg m^{-3}) or less, is detectable by this method.

The transducer shown in figure 18 was designed for testing in the density reference system. It consists of two quartz crystals held a fixed distance apart in an open framework which allows free passage of fluid between the crystal faces. Of major concern, of course, was the question of effect of solid particles, i. e., slush in the sonic path.

We were able to duplicate Younglove's results in the liquid phase between normal-boiling and triple-point densities, but even a small solid

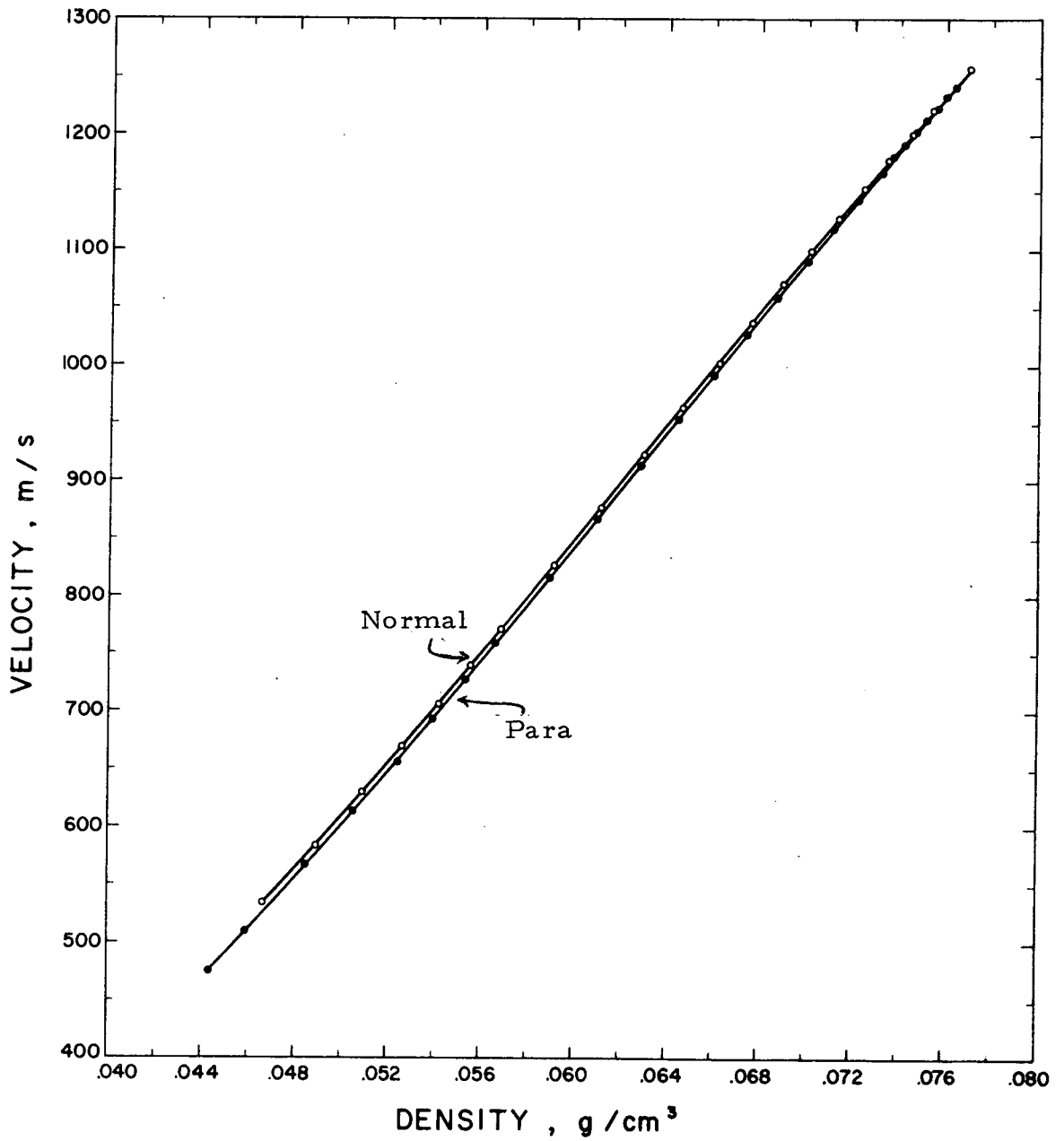


Figure 17. Younglove Data for Velocity of Sound in Hydrogen.

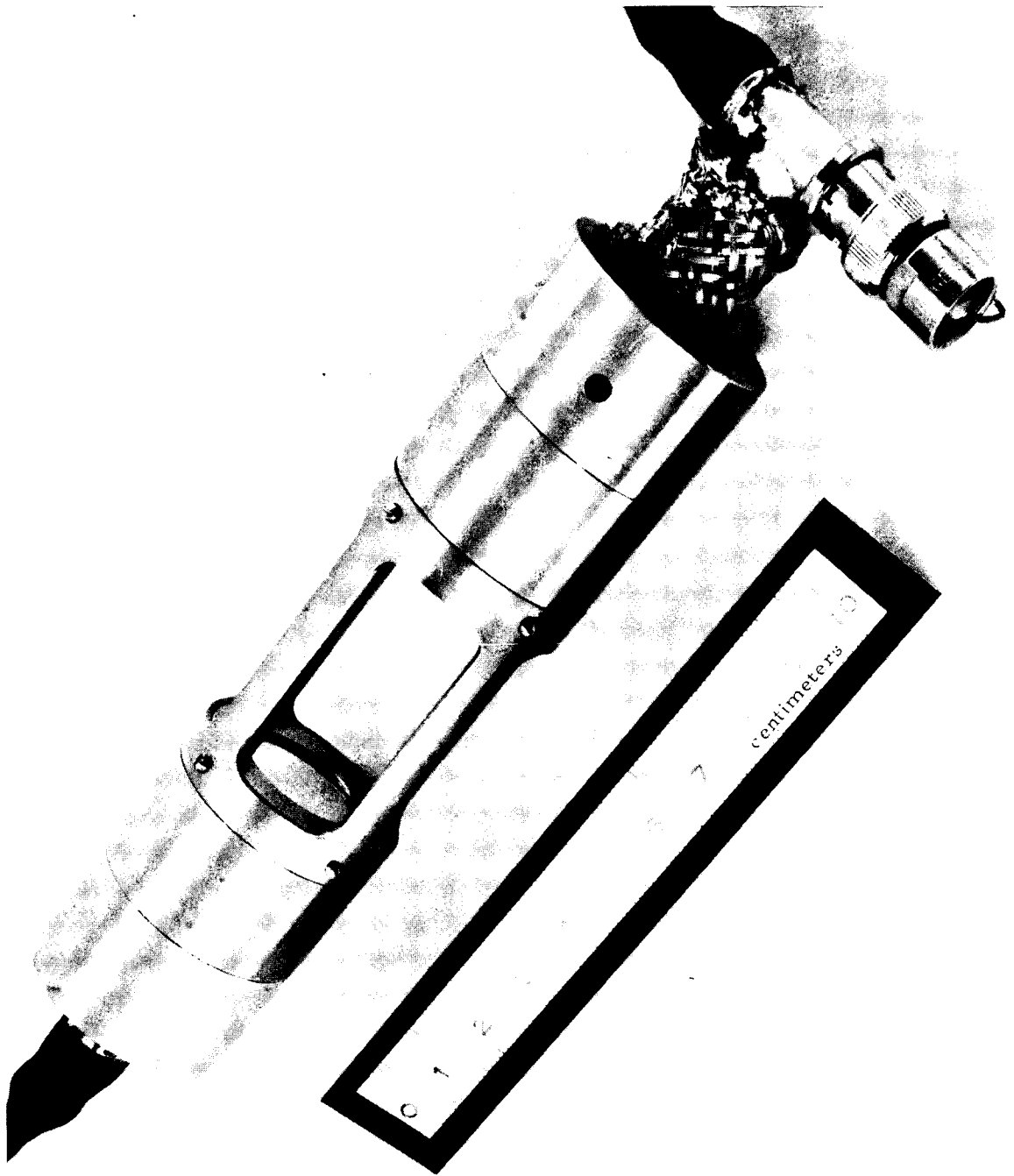


Figure 18. Velocity of Sound Transducer for Density Measurement.

fraction resulted in scatter of reflected frequencies, making it impossible to achieve the constructive interference on which the method depends. Accordingly, it must be concluded that sonic methods do not look promising for slush density measurements.

5. Summary

Table 2 summarizes the hydrogen slush density transducer testing, with emphasis on the characteristics necessary for a slush density transfer standard. Beta-ray attenuation can give densities with uncertainties of ± 1.0 percent, and may be worth considering for point density sensing in some applications. Gamma-ray attenuation offers higher accuracy, but is not at present suitable for use as a transfer standard. Methods depending on change in dielectric constant are the simplest and most predictable, as well as the most accurate, for fluids which have a known dielectric constant vs. density relationship. The Clausius-Mossotti function provides this relationship for hydrogen.

The direct comparison of capacitances in a stable capacitor of simple geometry is the recommended method for hydrogen slush density measurements. A capacitor design which allows free passage of slush between the electrodes was developed and tested with satisfactory results in the density reference system. A much larger version of this "rod-to-blade" capacitor design is being used with a high degree of success in a one-m³ hydrogen slush upgrading vessel at NBS. Still larger versions have been designed for installation in 11.4 m³ and 87 m³ slush vessels which are part of a new facility under construction at the George C. Marshall Space Flight Center in Huntsville.

It is not really necessary to calibrate the capacitors in the density reference system. All that is required is one accurate reading of the

Table 2

Hydrogen Slush Density Transducer Summary

	β	γ	C	MW
Density Uncertainty	1%	0.5%	0.5%	0.5%
Special Advantages	Simple Probe	No Probe	Simple System	Large Sample
Special Problems	1. Complex Electronics 2. Detector Breakdown	1. Radiation Hazard 2. Not Transferable	Sampling	Spurious Reflections
Transfer Standard	Possible	No	Yes	Possible

capacitance with triple-point liquid hydrogen between the electrodes. After this, the dielectric constant and corresponding density can be obtained for any slush sample. The temperature does not change, of course, so no temperature correction is required. It is important to be assured, however, that slush passes freely between the electrodes; this can be tested by stirring the mixture at several speeds until a stable slush density reading is obtained.

6. References

1. H. M. Roder, L. A. Weber, and R. D. Goodwin, "Thermodynamic and Related Properties of Parahydrogen from Triple Point to 100 K at Pressures to 340 Atmospheres," NBS Monograph 94 (1965).
2. R. F. Dwyer, G. A. Cook, O. E. Bernwaldt, and H. E. Nevins, "Molar Volume of Solid Parahydrogen Along the Melting Line," J. Chem. Phys. 43, p. 801 (1965).
3. E. B. Wilson, Jr., "An Introduction to Scientific Research," McGraw-Hill Book Co., Inc. (1952).
4. D. B. Mann, P. R. Ludtke, C. F. Sindt, and D. B. Chelton, "Liquid-Solid Mixtures of Hydrogen Near the Triple Point," Adv. in Cryo. Engr. 11, p. 207, Plenum Press (1966).
5. D. H. Weitzel, C. F. Sindt, and D. E. Daney, "Hydrogen Slush Density Reference System," Adv. Cryo. Engr. 13, p. 523, Plenum Press (1968).
6. B. A. Younglove, "Polarizability, Dielectric Constant, Pressure, and Density of Solid Parahydrogen on the Melting Line," J. Chem. Phys., 48, 9 (1968).
7. B. A. Younglove, "Speed of Sound in Fluid Parahydrogen," J. Acous. Soc. Am. 38, 3 (1965).

Appendix A

The final working equation of the density reference system is

$$\rho = \frac{\rho_l}{M_l} \left[(M_b + M_l) + \frac{T_2}{T_1} (M_{b1} - M_{b0}) \right].$$

The terms in the equation are

- ρ = slush density,
- ρ_l = triple-point liquid hydrogen density,
- M_b = buoyed mass of solids in weigh-can,
- M_l = mass of triple-point liquid which exactly fills the weigh-can,
- T_2 = elapsed time between slush density transducer reading and the weighing for determination of M_b ,
- T_1 = time interval between weighings made to determine heat leak,
- M_{b1} = buoyed mass of solids at end of interval T_1 , and
- M_{b0} = buoyed mass of solids at beginning of interval T_1 .

A consistent set of values for the experimental variables, and the value of the one systematic parameter ρ_l , are as follows:

- M_b = 117 ± 2.34 g
- M_{b0} = 117 ± 2.34 g
- M_{b1} = 92.5 ± 1.85 g
- T_1 = 8000 ± 10 s
- T_2 = 900 ± 1 s
- M_l = 2000 ± 40 g
- ρ_l = 77.017 ± 0.077 kg m⁻³.

It is assumed that all of the weighings may contain uncertainties of as much as ± 2 percent. The values of M_b and M_{b0} are for 0.50 solid fraction slush. The value of M_{b1} was obtained by assuming a heat influx to the slush in the weigh-can of 2.0 watts. (The actual heat influx measured during several experiments was about 1.3 watts.) The time intervals T_1 and T_2 , together with their uncertainties, are reasonable estimates.

The partial derivatives obtained from the working equation are as follows:

$$\begin{aligned} \frac{\partial \rho}{\partial M_b} &= \frac{\rho_l}{M_l} \\ \frac{\partial \rho}{\partial M_{b0}} &= \frac{-\rho_l T_2}{M_l T_1} \\ \frac{\partial \rho}{\partial M_{b1}} &= \frac{\rho_l T_2}{M_l T_1} \\ \frac{\partial \rho}{\partial T_1} &= \frac{\rho_l T_2 (M_{b1} - M_{b0})}{M_l T_1} \\ \frac{\partial \rho}{\partial T_2} &= \frac{\rho_l (M_{b1} - M_{b0})}{M_l T_1} \\ \frac{\partial \rho}{\partial M_l} &= \frac{\rho_l T_2 (M_{b0} - M_{b1})}{M_l^2 T_1} - \frac{\rho_l M_b}{M_l^2} \\ \frac{\partial \rho}{\partial \rho_l} &= \frac{M_b + M_l}{M_l} - \frac{T_2 (M_{b0} - M_{b1})}{M_l T_1} \end{aligned}$$

Each term of the form $(\partial \rho / \partial \chi)^2 (d\chi)^2$ can now be evaluated. The results are as follows:

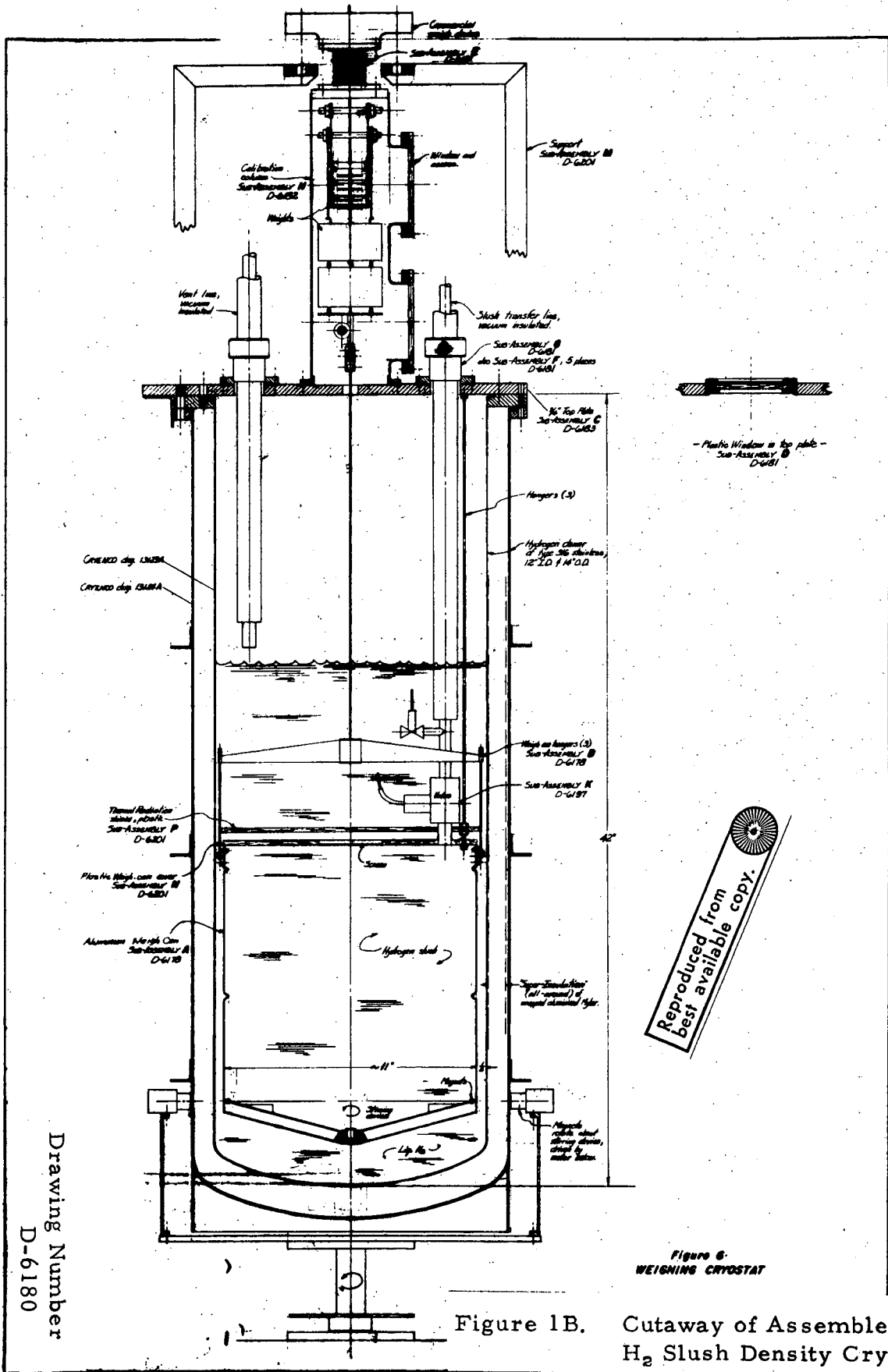
$$\begin{aligned}
\text{For } \chi &= M_b, (3.85 \times 10^{-2})^2 (2.34)^2 = 8.12 \times 10^{-3} \\
\text{For } \chi &= M_{b0}, (4.33 \times 10^{-3})^2 (2.34)^2 = 1.04 \times 10^{-4} \\
\text{For } \chi &= M_{b1}, (4.33 \times 10^{-3})^2 (1.85)^2 = 6.45 \times 10^{-5} \\
\text{For } \chi &= T_1, (1.10 \times 10^{-4})^2 (10)^2 = 1.21 \times 10^{-6} \\
\text{For } \chi &= T_2, (-1.18 \times 10^{-4})^2 (1)^2 = 1.39 \times 10^{-8} \\
\text{For } \chi &= M_\ell, (-2.21 \times 10^{-3})^2 (40)^2 = 7.83 \times 10^{-3} \\
\text{For } \chi &= \rho_\ell, (1.06)^2 (0.077)^2 = 6.63 \times 10^{-3} .
\end{aligned}$$

From the above tabulation, it is easy to see which terms contribute most to the final uncertainty in ρ . The two percent uncertainties in M_b and M_ℓ each contribute slightly more than the 0.1 percent uncertainty in the triple-point liquid density ρ_ℓ . None of the new variables introduced by the heat leak correction make a significant contribution to the final uncertainty.

The total squared uncertainty in ρ is obtained by adding the tabulated values, which gives $(d\rho)^2 = 0.0227 \text{ kg m}^{-3}$, or $d\rho = 0.15 \text{ kg m}^{-3}$. The relative error, for 0.5 solid fraction slush, is $0.15/81.35 = \pm 0.18$ percent.

Appendix B

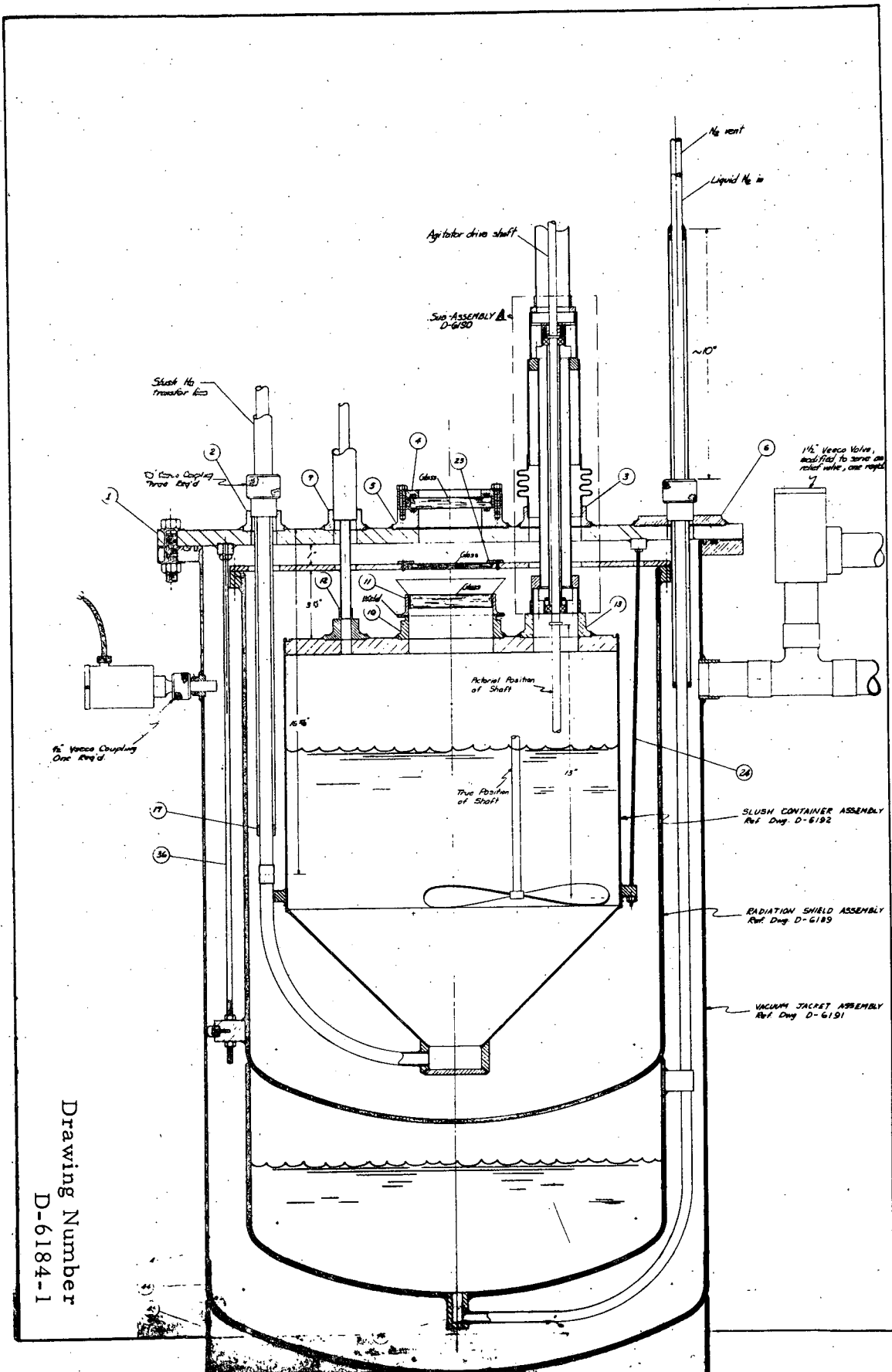
Drawing Number	Title	Figure
D-6180	Cutaway of Assembled H ₂ Slush Density Cryostat	1B
D-6178	Weigh-Can Details	2B
D-6182-1	Calibration Weight Column	3B
D-6179	Dewar for Density Reference System	4B
D-6181-1	Top Plate Sub-Assemblies	5B
D-6183-1	Top Plate Details	6B
D-6184-1	General Assembly 50 Liter Hydrogen Slush Generator	7B
D-6192-1	Slush Container of Generator	8B
D-6189-7	Nitrogen Cooled Radiation Shield	9B
D-6191-1	Vacuum Jacket of Generator	10B
D-6185-1	Generator Top Plate	11B
D-6187-1	Top Plate for Slush Container of Generator	12B
D-6186-5	Generator Details 2-8	13B
D-6188-2	Generator Details 14-26	14B
D-6190-2	Transfer Line Details	15B
D-6197	Sub-Assembly J, K Vacuum Pumpout Valve	16B
D-13123A	DRS Dewar Details	17B
D-13124A	DRS Dewar Details	18B



Drawing Number
 D-6180

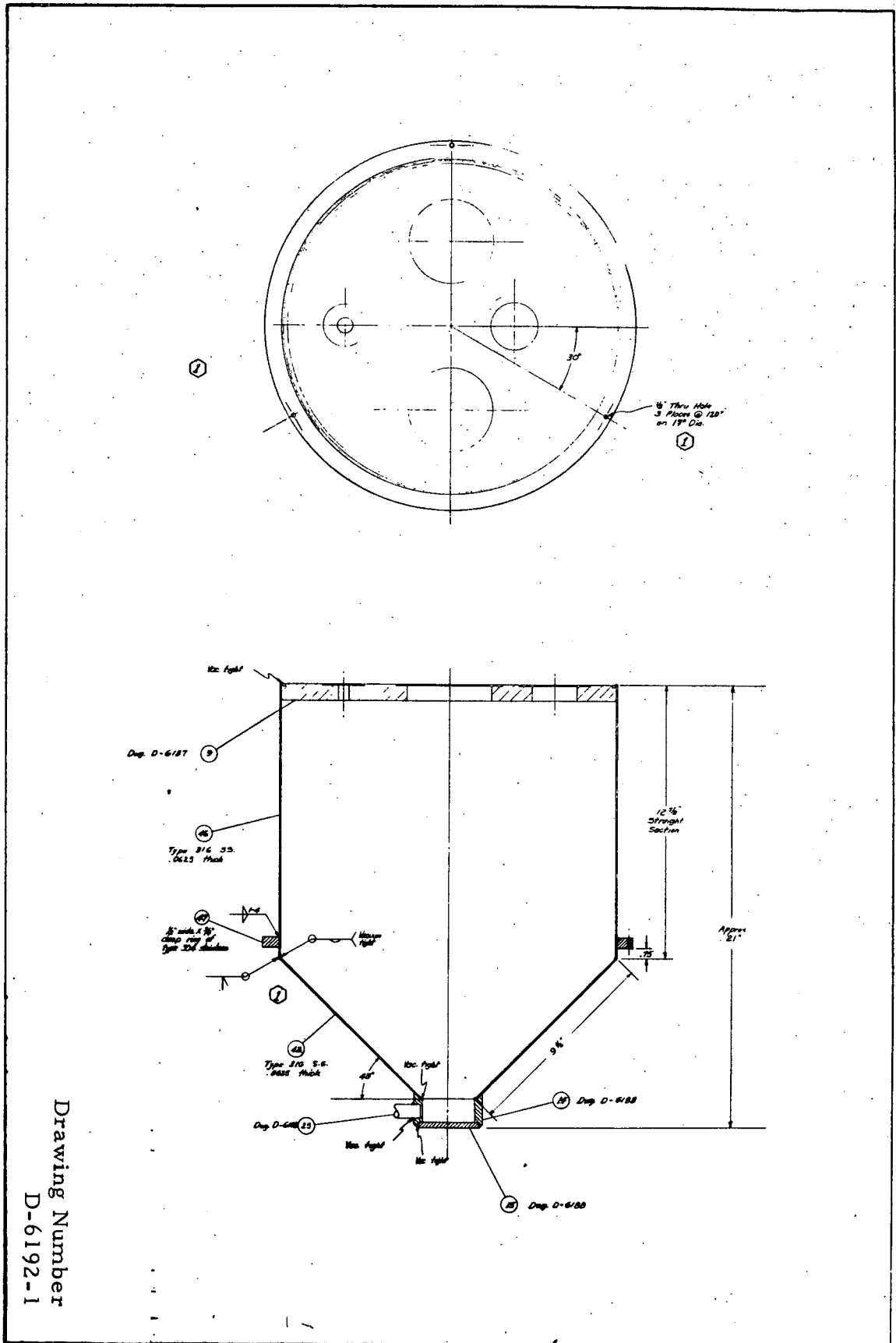
Figure 1B. Cutaway of Assembled
 H_2 Slush Density Cryostat.

Figure 6.
 WEIGHING CRYOSTAT



Drawing Number
 D-6184-1

Figure 7B. General Assembly 50 Liter Hydrogen Slush Generator.



Drawing Number
 D-6192-1

Figure 8B. Slush Container of Generator.

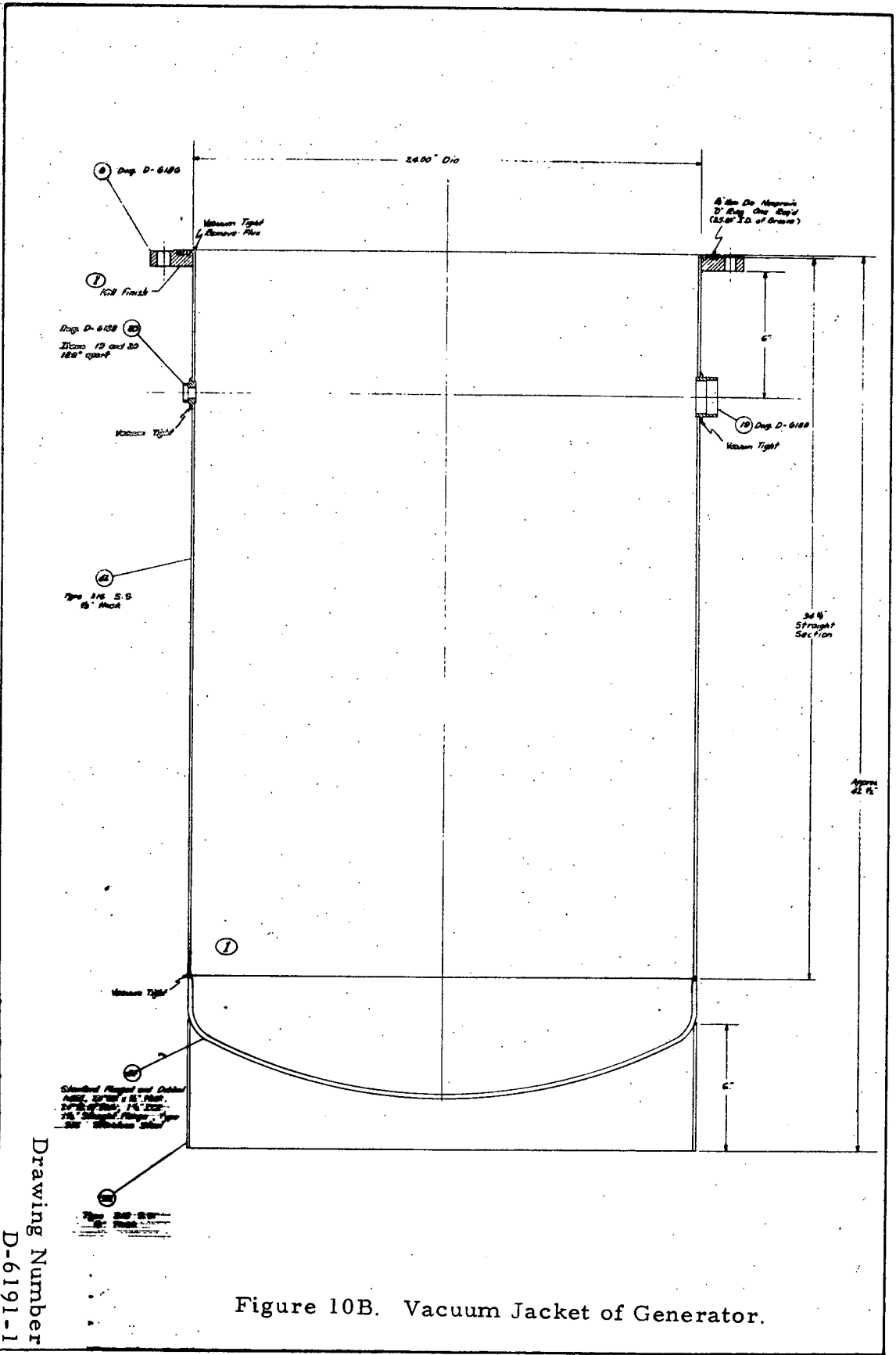


Figure 10B. Vacuum Jacket of Generator.

Drawing Number
 D-6191-1

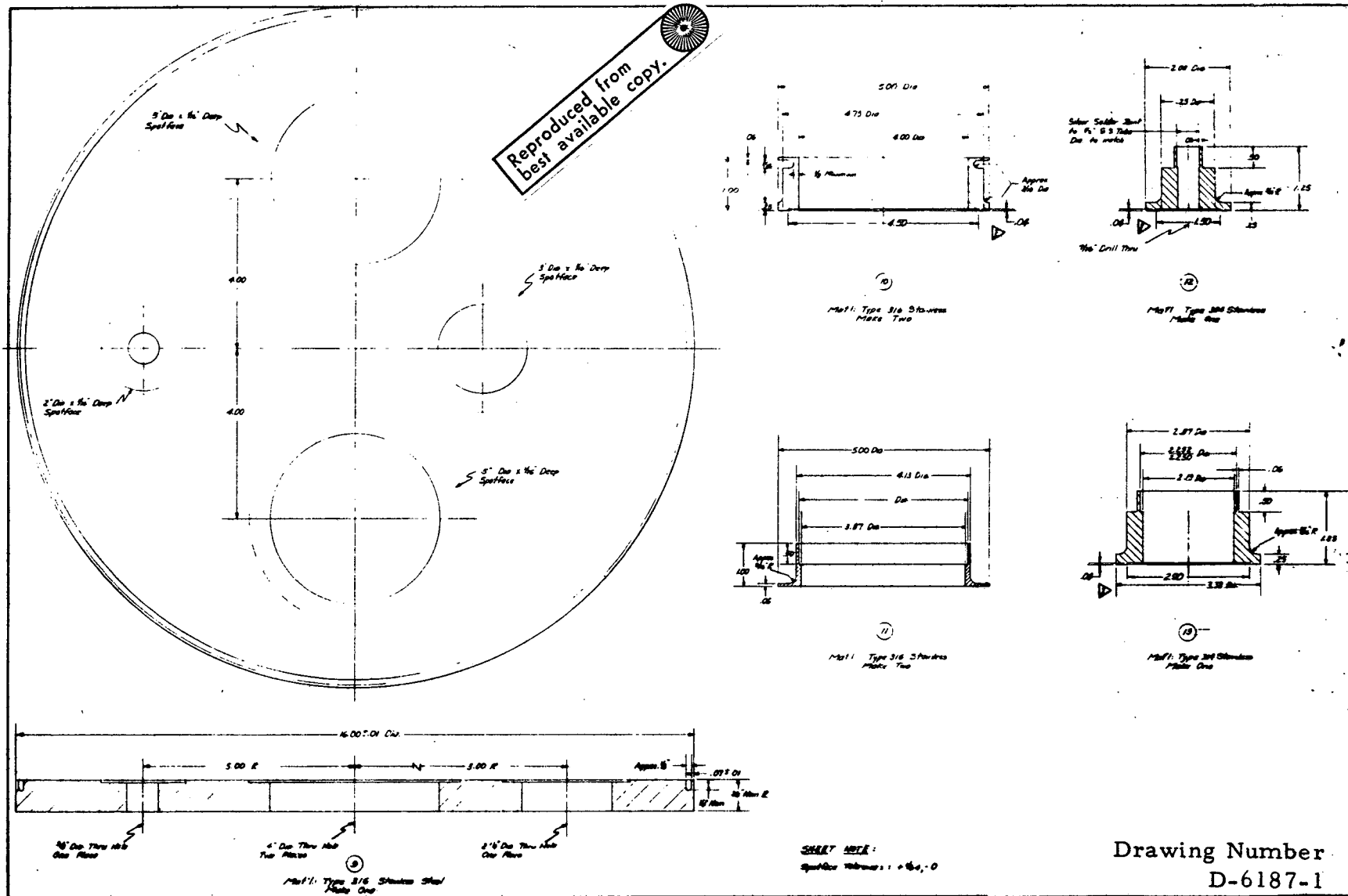
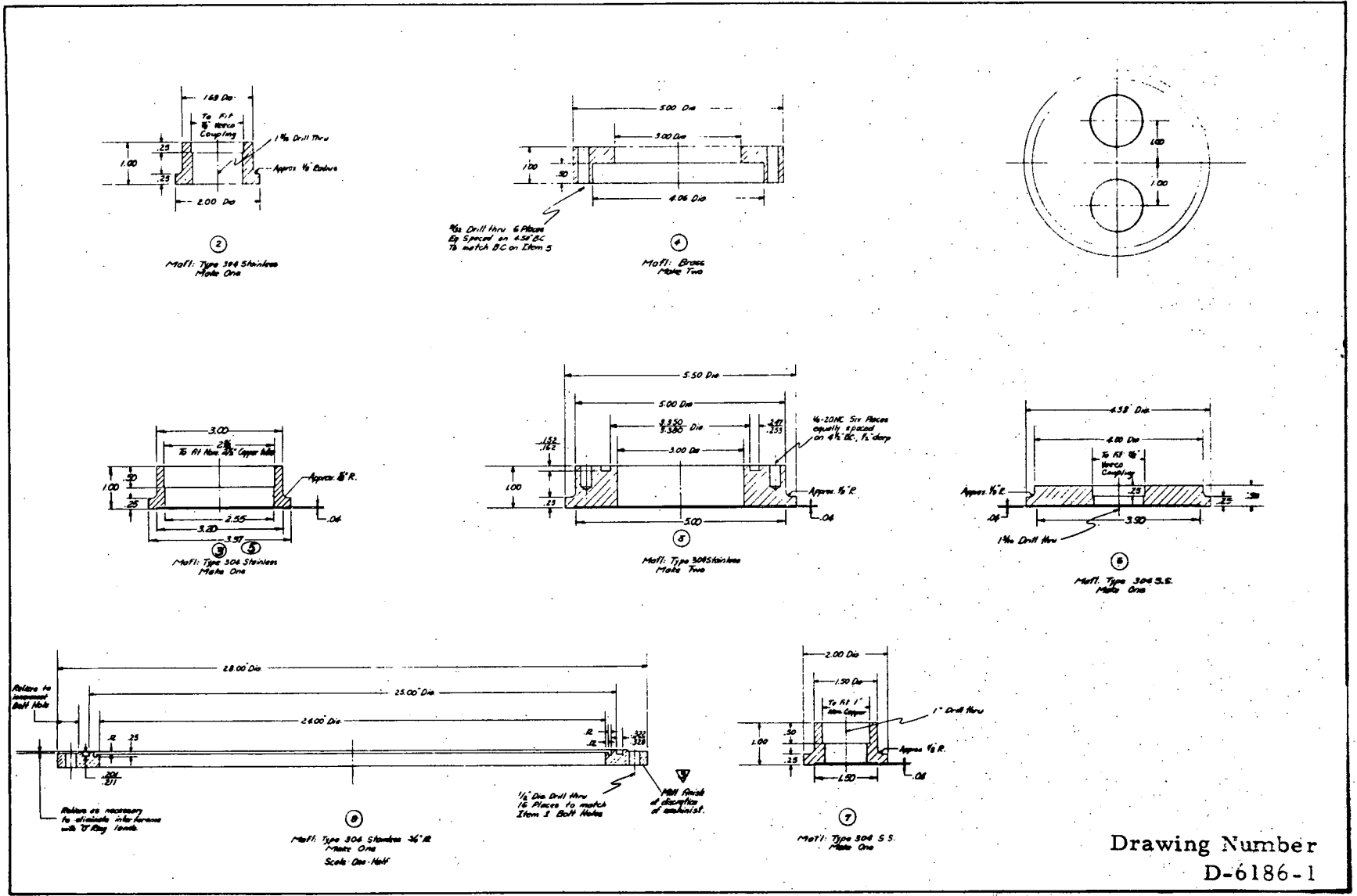


Figure 12B. Top Plate for Slush Container of Generator.

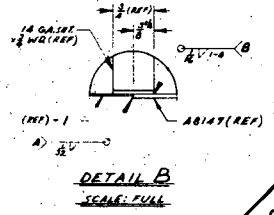
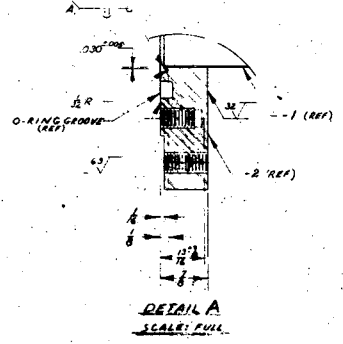
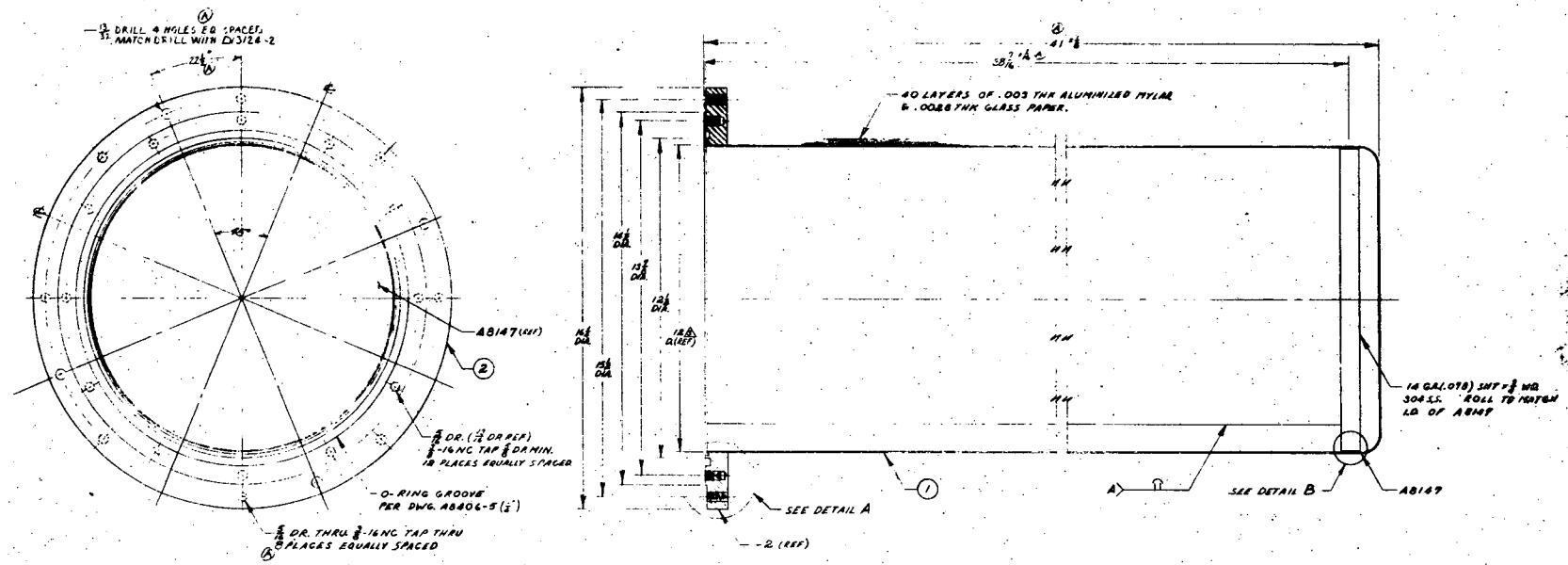
Drawing Number
 D-6187-1



Drawing Number
D-6186-1

Figure 13B. Generator Details 2-8.

Rev	Q	Date	Description
A	EDM	6-7-67	90% WGT. PC. 30% WGT. ST. 9 PLS. WGT. 4. ADDED 4" DIA. HOLE TO PLANNING.



▲ I.D. OF -1 TO MATCH I.D. OF AB147
 Ø I.D. OF -2 TO MATCH Ø D OF -1
 A. LEAK CHECK PER SPEC. 2739 DO NOT EVALUATE
 NOTE: A. INERT GAS ARC WELD, USE 308 SS FILLER
 B. INERT GAS ARC WELD, USE 309 SS FILLER

Reproduced from
 best available copy.

Drawing Number
 D-13123A

Figure 17B. DRS Dewar Details.

NBS TECHNICAL PUBLICATIONS

PERIODICALS

JOURNAL OF RESEARCH reports National Bureau of Standards research and development in physics, mathematics, chemistry, and engineering. Comprehensive scientific papers give complete details of the work, including laboratory data, experimental procedures, and theoretical and mathematical analyses. Illustrated with photographs, drawings, and charts.

Published in three sections, available separately:

● Physics and Chemistry

Papers of interest primarily to scientists working in these fields. This section covers a broad range of physical and chemical research, with major emphasis on standards of physical measurement, fundamental constants, and properties of matter. Issued six times a year. Annual subscription: Domestic, \$9.50; foreign, \$11.75*.

● Mathematical Sciences

Studies and compilations designed mainly for the mathematician and theoretical physicist. Topics in mathematical statistics, theory of experiment design, numerical analysis, theoretical physics and chemistry, logical design and programming of computers and computer systems. Short numerical tables. Issued quarterly. Annual subscription: Domestic, \$5.00; foreign, \$6.25*.

● Engineering and Instrumentation

Reporting results of interest chiefly to the engineer and the applied scientist. This section includes many of the new developments in instrumentation resulting from the Bureau's work in physical measurement, data processing, and development of test methods. It will also cover some of the work in acoustics, applied mechanics, building research, and cryogenic engineering. Issued quarterly. Annual subscription: Domestic, \$5.00; foreign, \$6.25*.

TECHNICAL NEWS BULLETIN

The best single source of information concerning the Bureau's research, developmental, cooperative and publication activities, this monthly publication is designed for the industry-oriented individual whose daily work involves intimate contact with science and technology—for *engineers, chemists, physicists, research managers, product-development managers, and company executives*. Annual subscription: Domestic, \$3.00; foreign, \$4.00*.

* Difference in price is due to extra cost of foreign mailing.

Order NBS publications from:

Superintendent of Documents
Government Printing Office
Washington, D.C. 20402

NONPERIODICALS

Applied Mathematics Series. Mathematical tables, manuals, and studies.

Building Science Series. Research results, test methods, and performance criteria of building materials, components, systems, and structures.

Handbooks. Recommended codes of engineering and industrial practice (including safety codes) developed in cooperation with interested industries, professional organizations, and regulatory bodies.

Special Publications. Proceedings of NBS conferences, bibliographies, annual reports, wall charts, pamphlets, etc.

Monographs. Major contributions to the technical literature on various subjects related to the Bureau's scientific and technical activities.

National Standard Reference Data Series. NSRDS provides quantitative data on the physical and chemical properties of materials, compiled from the world's literature and critically evaluated.

Product Standards. Provide requirements for sizes, types, quality and methods for testing various industrial products. These standards are developed cooperatively with interested Government and industry groups and provide the basis for common understanding of product characteristics for both buyers and sellers. Their use is voluntary.

Technical Notes. This series consists of communications and reports (covering both other agency and NBS-sponsored work) of limited or transitory interest.

Federal Information Processing Standards Publications. This series is the official publication within the Federal Government for information on standards adopted and promulgated under the Public Law 89-306, and Bureau of the Budget Circular A-86 entitled, Standardization of Data Elements and Codes in Data Systems.

Consumer Information Series. Practical information, based on NBS research and experience, covering areas of interest to the consumer. Easily understandable language and illustrations provide useful background knowledge for shopping in today's technological marketplace.

NBS Special Publication 305, Supplement 1, Publications of the NBS, 1968-1969. When ordering, include Catalog No. C13.10:305. Price \$4.50; foreign, \$5.75.