

NASA CASE NO. LAR 15129-1

PRINT FIG. 1

Handwritten:
1995
22
22850
P-26

NOTICE

The invention disclosed in this document resulted from research in aeronautical and space activities performed under programs of the National Aeronautics and Space Administration. The invention is owned by NASA and is, therefore, available for licensing in accordance with the NASA Patent Licensing Regulation (14 Code of Federal Regulations 1245.2).

To encourage commercial utilization of NASA-owned inventions, it is NASA policy to grant licenses to commercial concerns. Although NASA encourages nonexclusive licensing to promote competition and achieve the widest possible utilization, NASA will provide the necessary incentive to the licensee to achieve early practical application of the invention.

Address inquiries and all applications for license for this invention to **NASA Patent Counsel, Langley Research Center, Code 212, Hampton, Virginia 23681-0001.**

Serial No.: 08/323,943
10/13/94 LaRC

(NASA-Case-LAR-15129-1) PASSIVE N95-14184
FETAL HEART RATE MONITORING
APPARATUS AND METHOD WITH ENHANCED
FETAL HEART BEAT DISCRIMINATION Unclas
Patent Application (NASA, Langley
Research Center) 26 p
G3/52 0029850

PASSIVE FETAL HEART RATE MONITORING APPARATUS AND METHOD WITH ENHANCED
FETAL HEART BEAT DISCRIMINATION

The invention relates in general to the determination of the fetal heart rate of a fetus inside an expectant mother through the identification of fetal heart beats, and more specifically, to an improved method and apparatus for detecting fetal heart beats from the signals generated by a passive fetal heart rate monitoring sensor and determining a fetal heart rate based on the identified fetal heart beats.

According to the present invention, a passive fetal heart rate monitoring sensor is used to acquire a plurality of acoustic signals emanating from a fetus. These signals are amplified, filtered, multiplexed, and digitized. The plurality of digitized signals are then simultaneously filtered by multiple parallel nonlinear filters to identify fetal heart beats. Estimates of a fetal heart rate are made from the identified fetal heart beats for each of the plurality of signals for each filtering method. A figure of merit is then used to weigh each fetal heart rate estimate thus generated and the highest ranking fetal heart rate estimate is selected as the most accurate fetal heart rate for a specific time frame. The fetal heart rate is displayed, stored, or outputted to a communications channel.

The invention does not require the use of reference signals such as that used in adaptive cancellation techniques. Moreover, the use of parallel nonlinear filtering by a neural network and a Teager Energy Operator is superior to existing methods in the industry. There is also the determination of a plurality of fetal heart rate estimates based on identified fetal heart beats from each filtering result for each of the plurality of sensor signals. The ranking of this plurality of fetal heart rate estimates and the selection of the highest ranking fetal heart rate estimate increases the chances for identifying an accurate fetal heart rate.

Inventors: Stephen A. Zahorian 543 Virginia Ave.
SS# [REDACTED] Norfolk, VA 23508
Employer: Old Dominion University, Norfolk, VA

David L. Livingston 4927 Cherokee Hills Dr.
SS# [REDACTED] Salem, VA 24153
Employer: Old Dominion University, Norfolk, VA

Robert A. Pretlow III 18109 NE 76th
SS# [REDACTED] Redmond, WA 98052
Employer: Lockheed Eng. & Sciences, Hampton VA

Initial Evaluator: Joseph S. Heyman

Serial No.: 08/323,943
Filed: 10/13/94

PASSIVE FETAL HEART RATE MONITORING APPARATUS AND METHOD
WITH ENHANCED FETAL HEART BEAT DISCRIMINATION

Origin of the Invention

The invention described herein was jointly made in the performance of
5 work under a NASA contract and under a NASA Grant, and is subject to Section
305 of the National Aeronautics and Space Act of 1958, as amended, Public
Law 85-568 (72 Stat. 435; 42 USC 2457) and Public Law 96-517 (35 U.S.C. 200
et seq.). In accordance with 35 USC 202, the grantee elected not to retain title.

Background of the Invention

10 Field of the Invention

The invention relates in general to the determination of the fetal heart rate
of a fetus inside an expectant mother through the identification of fetal heart
beats, and more specifically, to an improved method and apparatus for detecting
fetal heart beats from the signals generated by a passive fetal heart rate
15 monitoring sensor and determining a fetal heart rate based on the identified fetal
heart beats.

Description of the Related Art

Various methodologies have been employed in the industry to determine
fetal heart rates within a noise-contaminated signal from a fetal heart monitoring
20 sensor. For example, a well known method in the industry is bandpass filtering
which removes low frequency noise from heart beat signals. However,
bandpass filtering fails to adjust for background noise frequencies which change
with respect to time. A more sophisticated methodology which adapts to

changing background noise is described in U.S. Patent Number 4,781,200 to Baker. The Baker patent discloses a portable, non-invasive system for monitoring fetal heart rate employing adaptive cancellation and spectral analysis. The Baker system is essentially an ambulatory system which uses
5 adaptive interference cancelling to isolate fetal heart beats and frequency domain analyses of multi-channel signals to extract useful information pertaining to fetal well-being, including fetal heart rate and absence of fetal movement. Another system, described in U.S. Patent Number 5,209,237 to Rosenthal, also employs a similar noise cancellation technique, but uses multiple reference
10 sensors to detect various background noises for adaptive cancellation and subsequent time-domain, cross-spectral frequency analysis. While there are certain benefits in using adaptive cancellation and spectral analysis, the use of interference cancellation to identify fetal heart beats is dependent on the quality of the reference signals. Noise not included in the reference signal may not be
15 filtered from the signals emanating from the abdomen. While generally known sources of noise, such as the mother's heart beat and breathing, are easily identified and filtered, extraneous noise from other organs or from the external environment may be missed. Therefore, the resulting signal may not have been sufficiently filtered of noise and an inaccurate fetal heart rate may have been
20 determined from erroneous fetal heart beat data.

The use of a linear prediction methodology has also been used in the industry as the basis for identifying fetal heart beats during the determination of a fetal heart rate. Such an approach is described in Pretlow III, R. A. and Stoughton, J., "Signal Processing Methodologies for an Acoustic Fetal Heart
25 Rate Monitor," Master's Thesis, April, 1991, Old Dominion University (hereafter "Pretlow et al."). However, such a methodology, while an improvement over adaptive cancellation, is still sensitive to noise not related to the fetal heart beat. Moreover, linear prediction has a significant deficiency inherent in the linear nature of its filter structure which prevents it from accurately modeling the
30 nonlinearity of the background noise. The use of a two-layer, feed forward

neural network has been suggested for use in identifying heart beats and determining heart rates. Such a method is discussed in detail in Hu, Y. H., Tompkins, W. J., and Xue, Q., "Artificial Neural Network for ECG Arrhythmia Monitoring," Proceedings of IJCNN Intl. Joint Conf. on Neural Networks, 1992, 5 vol. 2 (hereafter "Hu et al."). However, the drawback of the methodology discussed by Hu et al. is that it concentrates on eliminating noise from ECG data and does not deal with supporting an acoustic-based monitoring apparatus. Indeed, the ECG environment differs significantly from the acoustic signal environment for fetal heart beats in terms of the type and amount of noise and 10 the strength of the heart beat signal. The previously-mentioned Pretlow et al. article acknowledges the possibility of using a neural network to perform signature matching to identify a fetal heart beat, but concludes that neural network processing works best in offline waveform processing, such as for ECG analysis, and has not been found practical for real time fetal heart beat 15 detection.

Summary of the Invention

Accordingly, it is an object of the invention to overcome the previously described problems and deficiencies in existing technology for identifying fetal heart beats and determining an accurate fetal heart rate.

20 In addition, it is an object of the invention to provide an improved apparatus and method for identifying fetal heart beats and determining fetal heart rates from signals generated from an acoustic fetal heart monitoring sensor.

It is a further object of the invention to provide a more accurate apparatus 25 and method for identifying a fetal heart beat, through the simultaneous nonlinear filtering of a plurality of acoustic signals, generated by a passive fetal heart rate monitoring sensor, by the use of a Teager Energy Operator and/or a neural network nonlinear filter or filters, and determining a fetal heart rate based upon

the identified fetal heart beats.

In order to achieve the foregoing and other objects, in accordance with the purposes of the present invention as described therein, an apparatus for identifying fetal heart beats and determining a fetal heart rate comprises a
5 passive fetal heart monitoring sensor producing a plurality of acoustic signals, multiple nonlinear filters simultaneously filtering the plurality of sensor signals, and means for determining fetal heart rates. As embodied herein, there is a passive fetal heart rate monitoring sensor which acquires acoustic signals emitted from a fetus inside a body and outputs a plurality of sensor signals; a
10 signal processing device, which receives, amplifies, filters, multiplexes, and digitizes the plurality of sensor signals, and which outputs a plurality of processed signals; multiple parallel nonlinear filters, which receive the plurality of processed signals, filter each of the plurality of processed signals to identify fetal heart beats, and output a plurality of functional values indicative of the
15 presence of fetal heart beats for each of the plurality of processed signals; and fetal heart rate determining means, responsive to the plurality of functional values indicative of the presence of fetal heart beats, for determining and outputting a fetal heart rate.

A method for identifying fetal heart beats and determining fetal heart rates
20 comprises multiple parallel nonlinear filtering of a plurality of acoustic sensor signals generated from a passive fetal heart rate monitoring sensor and steps for determining a fetal heart rate based on the identified heart beats. As embodied herein, the method comprises a step for acquiring acoustic signals emitted from the fetus and outputting a plurality of sensor signals, a step for
25 receiving, amplifying, filtering, multiplexing, and digitizing the plurality of sensor signals to produce a plurality of processed signals, a step for multiple parallel nonlinear filtering of each of the plurality of processed signals to identify the presence of fetal heart beats and to output a plurality of functional values indicative of the presence of fetal heart beats for each of the plurality of
30 processed signals, and a step for determining and outputting the fetal heart rate

based on the plurality of functional values indicative of the presence of fetal heart beats.

Brief Description of the Drawings

The present invention and the objects achieved by it will be understood
5 from the description of the preferred embodiments, taken in conjunction with the accompanying drawings of which:

FIG. 1 is an overview of the hardware platform for an embodiment of an apparatus according to the present invention.

FIG. 2 is a block diagram of the pre-processing hardware, the signal
10 processing system, and the computer for an embodiment of an apparatus according to the present invention.

FIG. 3 is a flow chart illustrating the multiple parallel nonlinear filtering for the multiple sensor signals and the determination of a fetal heart rate for an embodiment of a method according to the present invention.

15 FIG. 4 is a graph depicting the time domain acoustic fetal heart signal and the Teager Energy Operator response to the acoustic signal according to an embodiment of the present invention.

FIG. 5 is a schematic view illustrating a neural network according to an embodiment of the present invention.

20 FIG. 6 is a schematic view illustrating a particular unit in the neural network according to an embodiment the present invention.

FIG. 7 is a graph showing the time domain acoustic fetal heart signal and the neural network response to the signal according to an embodiment of the present invention.

25 FIG. 8 is a graph depicting the fetal heart rate tracing obtained from acoustic monitoring of a patient with a gestation age of 39 weeks.

Detailed Description of the Preferred Embodiments

Reference will now be made in detail to the present preferred embodiments of the present invention, examples of which are illustrated in the accompanying drawings, wherein like reference numerals refer to like elements
5 throughout.

FIG. 1 is an overview of the hardware platform for an apparatus according to an embodiment of the present invention. In FIG. 1, an ambulatory, non-invasive, passive, fetal heart rate monitoring sensor 1 is placed on the abdomen of an expectant mother. Multiple sensor elements inside sensor 1 receive the
10 signals emitted by a fetus inside the expectant mother and output a plurality of corresponding sensor signals 2, commensurate with the number of sensor elements inside sensor 1. Such ambulatory, non-invasive, sensor elements are well known in the industry and an example of this type of sensor 1 is described in U.S. Patent Number 5,140,992 to Zucherwar et al. entitled "PASSIVE FETAL
15 MONITORING SENSOR." The plurality of sensor signals 2 are received by a preprocessing electronic unit 3 which amplifies, filters, and multiplexes the signals in order to prepare and organize the sensor signals 2 for further processing. The preprocessed signals outputted by the preprocessing electronic unit 3 are received by the signal processing system 4 which
20 demultiplexes the preprocessed signals back into multiple sensor signals and digitizes the preprocessed multiple sensor signals for further analysis by an improved method of identifying fetal heart beats and determining a fetal heart rate. In particular, multiple parallel nonlinear filters are used in achieving significantly more accurate results for the identification of fetal heart beats.
25 Moreover, the determination of multiple fetal heart rate estimates, one estimate from the result of each nonlinear filtering of each sensor signal, and the use of a figure of merit method to select the best fetal heart rate estimate ensures the most accurate result from this system. The signal processing system 4 is programmed to carry out these functions of heart beat identification and heart

rate determination.

As to the signal processing system 4, one embodiment of the present invention has the signal processing system 4 inside a personal computer (PC) 5. The PC 5 is well known in the industry and, as shown in FIG. 2, is comprised
5 of a central processing unit (CPU) 12, memory 13, and fixed disk storage 14; and further, has attached a keyboard 15 and a display 16. The PC 5 is used to carry out input from and output to various devices, such as the keyboard 15, the display 16, or a communications channel (not shown). The signal processing system 4 is not limited to being physically located inside a PC. For example, the
10 preprocessing electronic unit 3 and the signal processing system 4 can be combined in a signal processing device separate from the PC. In addition, the embodiments of the present invention are not limited to the identification of fetal heart beats and determination of fetal heart rates by a programmed signal processing system 4. For example, a general purpose digital computer, such as
15 a generic version of PC 5, may be programmed to provide the same features. After a fetal heart rate is determined, the result may be displayed on display 16 or stored in fixed storage 14 in the PC, for example, when appropriate commands are entered via the keyboard 15.

FIG. 2 is a block diagram detailing the preprocessing electronic unit 3, the
20 signal processing system 4, and the PC 5. The preprocessing electronic unit 3 comprises amplifiers 6 which receive the plurality of sensor signals 2. The sensor signals 2 outputted by the passive fetal heart rate monitoring sensor 1 is weak due to the inherent weakness of a fetal heart beat. One purpose of the amplifiers 6 is to boost the initial sensor signals 2. Another purpose of the
25 amplifiers 6 is to amplify the sensor signals 2 to match the range of subsequent components, e.g. an analog-to-digital converter. The amplifiers 6 respectively are connected to corresponding filters 7. The sensor signals 2 are bandpass filtered by bandpass filters 7 in order to eliminate competing signals that are larger than the fetal heart beat signal. By focusing the bandwidth on the
30 relevant range of a fetal heart beat, the analog-to-digital converter and other

subsequent processing will not be saturated with non-essential signals. The bandpass filters 7 are connected to an analog time-division multiplexor (M/X) 8. The multiplexor rotates among the filtered signals and time-division multiplexes the filtered signals to allow simultaneous sampling of all sensor signals. The time slice for each signal is very small (e.g., .5 ms) to accommodate the monitoring of dynamic, real-time changes in fetal heart rates. The multiplexor 8 is connected to an analog-to-digital converter 9 in the signal processing system 4. In one embodiment, the signal processing system is a digital signal processing (DSP) card housed inside PC 5. The signal processing system 4 has a central processing unit (CPU) 10 and memory 11 in addition to signal processing electronics (e.g., analog-to-digital converter 9). However, the embodiments of the present invention are not limited to having a signal processing system 4 as a DSP card residing inside a PC. For example, the preprocessing electronic unit 3 may be combined with the features and functions of the signal processing system 4 in a separate signal processing device outside the PC. As a further example, a general purpose digital computer, such as a generic version of PC 5, may be programmed to provide the same features as the signal processing system 4. The preprocessed signal outputted from the preprocessing electronics unit 3 is received by the signal processing system 4. The signal processing system 4 first converts the analog preprocessed signal into digital words, at a specified sampling rate, e.g., 500 Hz or waveform samples per second. Processing performed by the DSP CPU 10 receives the digital words via data stored in the DSP memory 11 and demultiplexes the digitized signal so that further processing may address time slices of digitized acoustic data for each of the multiple sensor signals 17 (as shown in FIG. 3).

FIG. 3 is a flow chart showing further processing by the DSP CPU 10 of the signal processing system 4. The digitized signal is further filtered (e.g., at a 500 samples per second rate) with a linear phase FIR digital filter 18 ("FIR LPF"). The use of digital filters operating on the digitized signal reduces the requirements on the analog bandpass filters 7 used in the hardware of the

preprocessing electronics unit 3 and allows for greater flexibility since these filters are very easily changed or tailored to any reasonable desired response. The linear phase property of the FIR digital filter also insures minimal waveform distortion. The filtered digital signal may then be further decimated to a lower
5 sampling rate (e.g., 250 samples per second). Such decimation to a lower sampling rate may be desirable since it reduces the computations required in subsequent steps of processing.

After the digital filtering of the multiple sensor signal data 17 by filters 18, the signals are further analyzed to identify fetal heart beats and a resultant fetal
10 heart rate is determined from the identified fetal heart beats. Multiple parallel nonlinear filters are used to identify fetal heart beats from the digitized acoustic sensor data. FIG. 3 shows two such nonlinear filters, i.e. a Teager Energy Operator 19 and a neural network 20. These nonlinear filters operate in parallel and provide redundant identification of fetal heart beats for each of the plurality
15 of sensor signals 17. Such parallel redundant processing improves the accuracy of identifying the fetal heart beats. While these benefits are created by the use of multiple parallel nonlinear filters, the embodiments of the invention are not limited to multiple parallel nonlinear filters. For example, singular nonlinear filtering, by the Teager Energy Operator 19 or by the neural network
20 20, of the plurality of sensor signals 17 is also possible to yield improved identification of fetal heart beats.

The particular embodiment in FIG. 3 shows a first nonlinear filtering by a Teager Energy Operator 19. The Teager Energy Operator 19 highlights regions of high energy (i.e., the heart beats). This nonlinear filter is known in
25 the industry and is described in Kaiser, James F., "On a Simple Algorithm to Calculate the 'Energy' of a Signal," ICASSP-90, 1990, vol. 1, pp. 381-84 (hereafter "Kaiser"). The Teager Energy Operator is computed using

$$y(n) = x^2(n-1) - x(n)*x(n-2).$$

where $x(n)$ is the acoustic signal and $y(n)$ is the Teager energy signal. This nonlinear operation results in a large output in regions which contain high amplitude and rapidly varying signals. The Teager signal is further digitally smoothed using a "box-car" average filter, well known in the industry. FIG. 4 depicts an example of an acoustic signal 28 and the Teager Energy Operator filtered response signal 29. The acoustic signal 28 shown in FIG. 4 is the amplitude of the acoustic signal as time passes. The Teager Energy Operator filtered response signal 29 is the amplitude of the Teager Energy signal as time passes.

10 The other nonlinear filter shown in FIG. 3 is a neural network. In one embodiment of the present invention, the neural network 20 is a three-layer feed-forward neural network as shown schematically in FIG. 5. The three layers of the network include an input layer 30, a hidden layer 31, and an output layer 32. For this nonlinear filter, the data is first normalized by a root mean square (RMS) value to insure that the subsequent processing receives data of uniform amplitude. In other words, the RMS value of each sampled signal may be used to control or adjust the input range of the analog-to-digital convertor to match the measured signal level. Such a normalization method helps to maintain the best possible signal-to-noise ratio for the signal data. The data is then processed by the neural network 20 which nonlinearly "filters" the data using twenty digital words 33 (corresponding to the current input point plus nineteen previous input points 36) to compute an output point 36 for the current time frame, using an equation:

$$y(n) = f \{x(n), x(n-1), \dots, x(n-19)\}, \text{ for each index in the frame of data,}$$

25 where

$y(n)$ is the current neural network output data 36

f represents the neural network

$x(n)$ is the current input data point 36

In addition, the neural network 20 comprises thirty hidden layer units 34

and one output layer unit 35. FIG. 6 is a schematic depiction of an arbitrary unit ("Unit X") corresponding to a hidden layer unit 34 or to the output layer unit 35. With unit X corresponding to a particular hidden layer unit 34, the plurality of inputs 37 (X_1-X_n) correspond to the plurality of digital words 33 from the input layer 30. Each input 37 is weighted by a weight 38 (W_1-W_n), summed with a bias term 39, and processed by a sigmoidal nonlinearity 40. An output value 41 is outputted to the output layer unit 35. With unit X corresponding to the output layer unit 35, each of the plurality of inputs 37 (X_1-X_n) corresponds to the outputted value from each of the hidden layer units 34. An output value 41, corresponding to the neural network output value 36, is outputted by the output layer unit 35. Thus, the neural network 20 is fully interconnected with a weight from each input layer unit 30 to each hidden layer unit 34, and from each hidden layer unit 34 to the output layer unit 35, and a bias term 39 for each unit. Bipolar sigmoidal nonlinearities 40 are used for all hidden layer units 34 and the output layer unit 35. In equation form, the neural network can be described as follows:

The input to each hidden layer unit 34 is of the form:

$$g_i = \sum_{j=0}^{19} W_{ij} x(j) + b_i \quad \text{for } 0 \leq i \leq 29$$

where g_i = input to i^{th} hidden unit

W_{ij} = weight from input j to hidden unit i

$x(j)$ = j^{th} input

20 b_i = bias for hidden unit i

The output of each hidden layer unit 34 is of the form:

$$h_i = \frac{1 - e^{-g_i}}{1 + e^{-g_i}}$$

where g_i = input to i^{th} hidden unit

h_i = output of i^{th} hidden unit

The input to the final output layer unit 35 is of the form:

$$O = \sum_{j=0}^{29} wh_j h_j + b$$

where O = input to output unit

wh_j = weight from j^{th} hidden unit to output unit 35

h_j = output of j^{th} hidden unit

5 b = bias for output unit 35

The final output, i. e., from the output layer unit 35, is given by:

$$p = \frac{1}{1 + e^{-O}}$$

where p = output of output unit 35

O = input of output unit

The neural network 20 was trained with a back propagation method using
 10 hand labeled training data, wherein regions of fetal heart beats and between-
 beat intervals were previously identified. Such data were obtained from clinical
 tests. Backpropagation is a well known method in the industry used to train a
 neural network, as described in Lippmann, R. P., "An Introduction to Computing
 with Neural Nets," IEEE ASSP magazine, Apr. 1987, pp. 4-22 (hereafter
 15 "Lippman"). The values for the weights and bias terms were determined from
 this training procedure. After the completion of the training, the neural network
 20 operates using the learned weights and biases. In essence, the neural
 network 20 acts as a nonlinear filter trained to indicate the presence of a fetal
 heart beat. FIG. 7 is a graph showing an example of a fetal heart tone as
 represented by an acoustic signal 42 and the resulting, nonlinearly filtered time-
 domain output waveform 43 from the neural network 20. The acoustic signal 42
 shown in FIG. 7 is the amplitude of the acoustic signal as time passes. The
 neural network output waveform 43 is the amplitude of the neural network output

as time passes.

As regards the neural network 20, although a layered, interconnected, feed forward neural network is caused to learn by back propagation, the embodiments of the present invention are not limited to this choice of a neural network nor to this choice of training. For example, an interlinked feed forward neural network also having feed back connections can be used. Such a feed forward and feed back neural network can be trained by a method proposed by J. J. Hopfield or another by G. E. Hinton et al. These learning methods are described in Hopfield, J. J., "Neural network and physical systems with emergent collective computational abilities," Proc. Natl. Acad. Sci. U.S.A., 1982, vol. 79; Hopfield, J. K., "Neurons with graded response have collective computational properties like those of two-state neurons," Proc. Natl. Acad. Sci. U.S.A., 1984, vol. 81; Ackley, D. H., Hinton, G. E., and Sejnowski, T. J., "A Learning Algorithm for Boltzmann Machines," Cognitive Sci., 1985, 9. Other variations of the neural network are also possible. For example, neural networks having a different number of hidden units, output units, or layers may also be trained to identify fetal heart beats.

The resulting signal from each of the multiple parallel nonlinear filtering is then analyzed with autocorrelation processing 21 (as shown in FIG. 3) as a first step in determining a fetal heart rate estimate 23. The determination of a fetal heart rate estimate for each of the plurality of results from the multiple parallel nonlinear filtering of each of the plurality of sensor signals 17 will increase the chances of discovering the most accurate fetal heart rate estimate.

Peak evaluation processing 22, as the next step as shown in FIG. 3, identifies peaks, selects the highest peaks, estimates a fetal heart rate based on the selected peaks in the autocorrelation, and determines a figure of merit 24 for the fetal heart rate estimate 23. A peak is defined as a point in the autocorrelation which is larger than immediately adjacent points. A peak is selected for fetal heart rate estimation if the peak is larger than a threshold number of adjacent points. A heart rate estimate is found by identifying and

using the selected peaks in the autocorrelation over a search range appropriate for fetal heart rates (typically 80 to 200 beats per minute). The heart rate estimates 23 are determined in this manner for each of the multiple sensor channels. The heart rate estimates 23 are then ranked using a figure of merit 5 24, which is derived from continuity constraints and a measure of periodicity in the waveform, as described below. The highest ranking (i.e., having the highest figure of merit) estimate is then selected in the next step by the merit comparison processing 25 as the heart rate 26 for the current frame of data. The figure of merit 27 is the figure of merit value corresponding to the selected fetal heart rate 10 26. This procedure is repeated for each frame of data. The time between frames for the entire processing is very small (e.g., .5 sec.) in order to properly monitor dynamic real-time changes in fetal heart rates.

The figure of merit 24 is determined as follows. First, one buffer is used to store a small number (e.g., 5) of the previously selected values of fetal heart rate 26. Another buffer is used to store a corresponding small number (e.g., 5) 15 of the previously corresponding values of figure of merit. A small number of previously calculated fetal heart rates and corresponding merit values is used to ensure the best dynamic response to fetal heart rate changes. A calculation is made using the following variables and equations:

20 For i^{th} rate estimate,

$$\text{Merit} = \text{Peak}(i) * \left(1.0 - \frac{\text{Avg. Merit}}{\text{Rate Dev.}} \right) * (\text{Rate}(i) - \text{Avg. Rate})$$

where

Merit = Figure of merit for the i^{th} fetal heart rate estimate.

Peak(i) = The normalized autocorrelation for the i^{th} fetal heart rate 25 estimate.

$$\text{Avg. Merit} = \frac{1}{m+1} \sum_{i=0}^m \text{Merit}(i)$$

where m is a small number (e.g., 4, which will provide for five samples when i ranges from 0 to 4), and

Merit(i) = previous merit computations 27

- 5 Rate Dev. = The factor which controls the contribution of previous estimates (typically = 30).

Rate(i) = fetal heart rate estimate 23

$$\text{Avg. Rate} = \frac{\sum_{i=0}^m \text{Merit}(i) \cdot \text{Rate}(i)}{\sum_{i=0}^m \text{Merit}(i)}$$

- 10 where m is a small number (e.g., 4, which will provide for five samples when i ranges from 0 to 4);

Merit(i) = previous merit computations 27; and

Rate(i) = previous selected rates 26.

- 15 This Avg. Rate is the "weighted" average of a small number m of previously selected fetal heart rates 26 having the highest ranking merits 27 when these rates 26 were selected by the merit comparison operation 25.

- 20 The heart rate estimate 23 with the highest figure of merit 24 is selected as the current and most accurate fetal heart rate 26 during merit comparison 25. If the figure of merit 27 for this calculation is above an empirically determined threshold (typically about 35% of the maximum value), the resultant calculation is assumed to be valid. When and if the output heart rate 26 is determined to be valid and is to be displayed, it is displayed as a "correct" reading. If the merit 27 is lower than the empirical threshold value (i.e., an invalid rate), the rate 26

is still displayed, but is color coded in the computer display to indicate a possible error or "dropout."

Alternatively, the outputted fetal heart rates 26 may be saved in fixed disk storage on the PC or transmitted to a communications channel, such as a
5 modem. An example of an output tracing of fetal heart rates from a device for an embodiment according to the present invention, obtained from a patient with a gestation age of 39 weeks, is shown in FIG. 8. The y-axis is measured in beats per minute versus time as measured along the X-axis. Each gradation along the X-axis equals approximately 20 seconds, or three gradations for about
10 a minute.

Numerous modifications and adaptations of the present invention will be apparent to those skilled in the art. Thus, the following claims and their equivalents are intended to cover all such modifications and adaptations which fall within the true spirit and scope of the present invention.

15

What is claimed is:

PASSIVE FETAL HEART RATE MONITORING APPARATUS AND METHOD
WITH ENHANCED FETAL HEART BEAT DISCRIMINATION

Abstract of the Disclosure

An apparatus for acquiring signals emitted by a fetus, identifying fetal
5 heart beats and determining a fetal heart rate. Multiple sensor signals are
outputted by a passive fetal heart rate monitoring sensor. Multiple parallel
nonlinear filters filter these multiple sensor signals to identify fetal heart beats
in the signal data. A processor determines a fetal heart rate based on these
identified fetal heart beats. The processor includes the use of a figure of merit
10 weighting of heart rate estimates based on the identified heart beats from each
filter for each signal. The fetal heart rate thus determined is outputted to a
display, storage, or communications channel. A method for enhanced fetal heart
beat discrimination includes acquiring signals from a fetus, identifying fetal heart
beats from the signals by multiple parallel nonlinear filtering, and determining
15 a fetal heart rate based on the identified fetal heart beats. A figure of merit
operation in this method provides for weighting a plurality of fetal heart rate
estimates based on the identified fetal heart beats and selecting the highest
ranking fetal heart rate estimate.

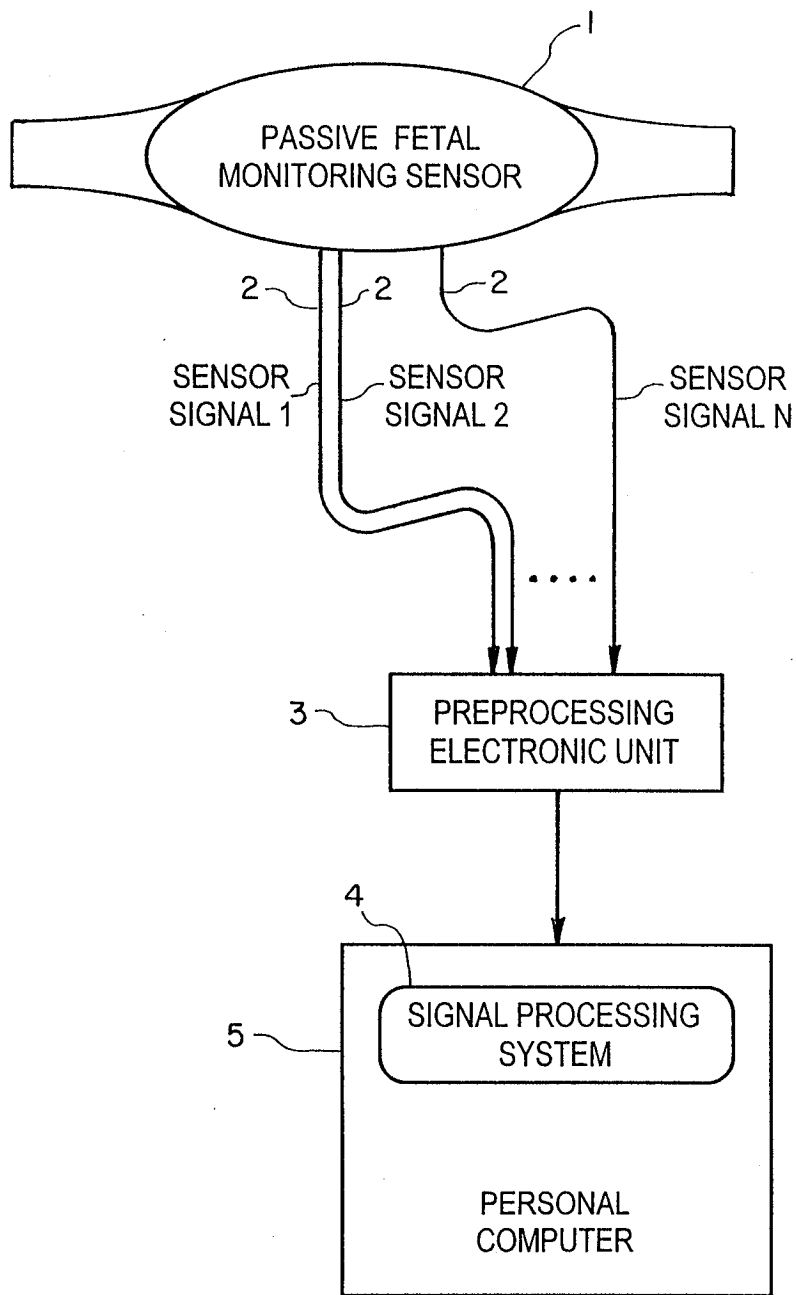


FIG. 1

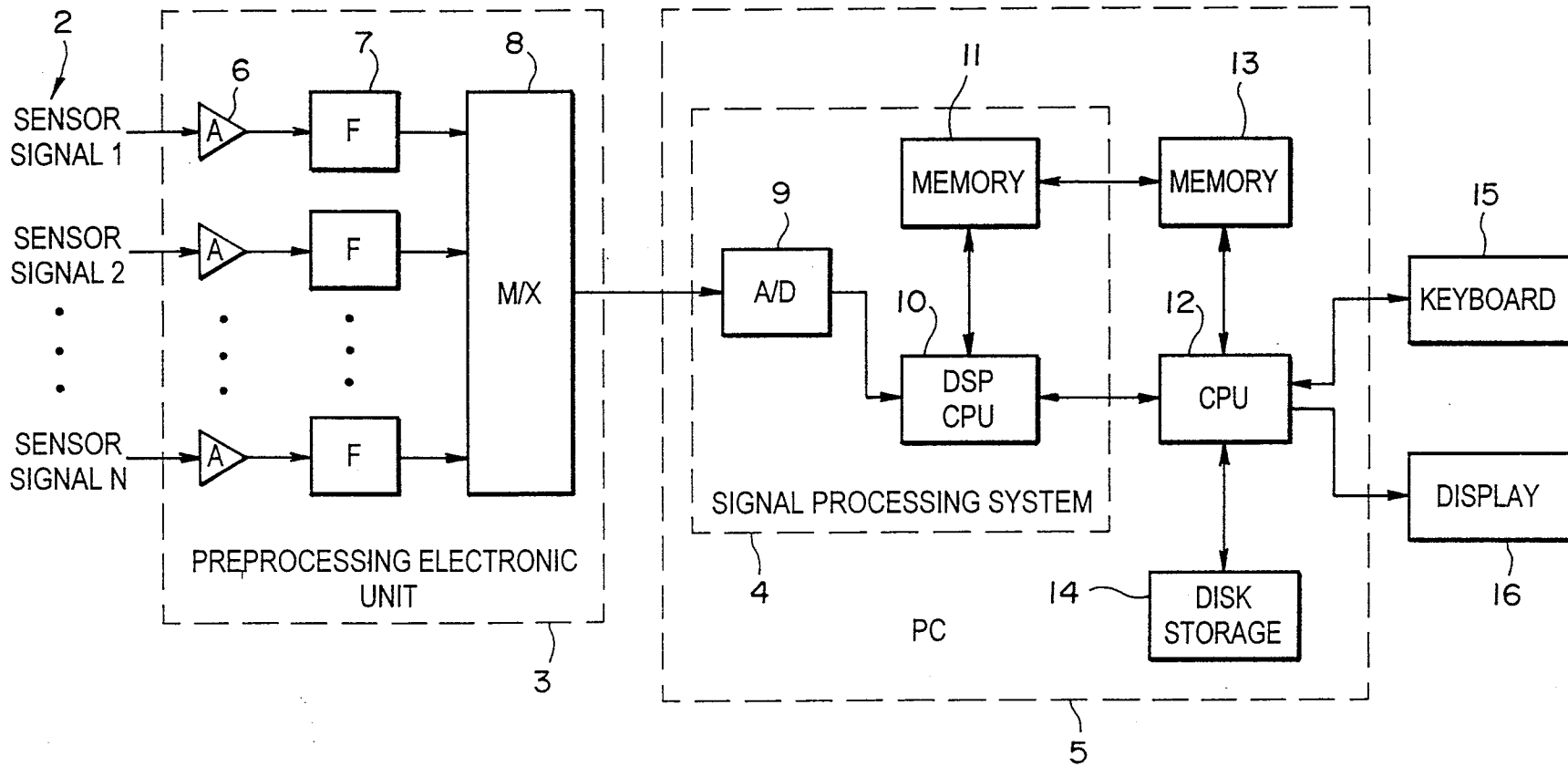


FIG. 2

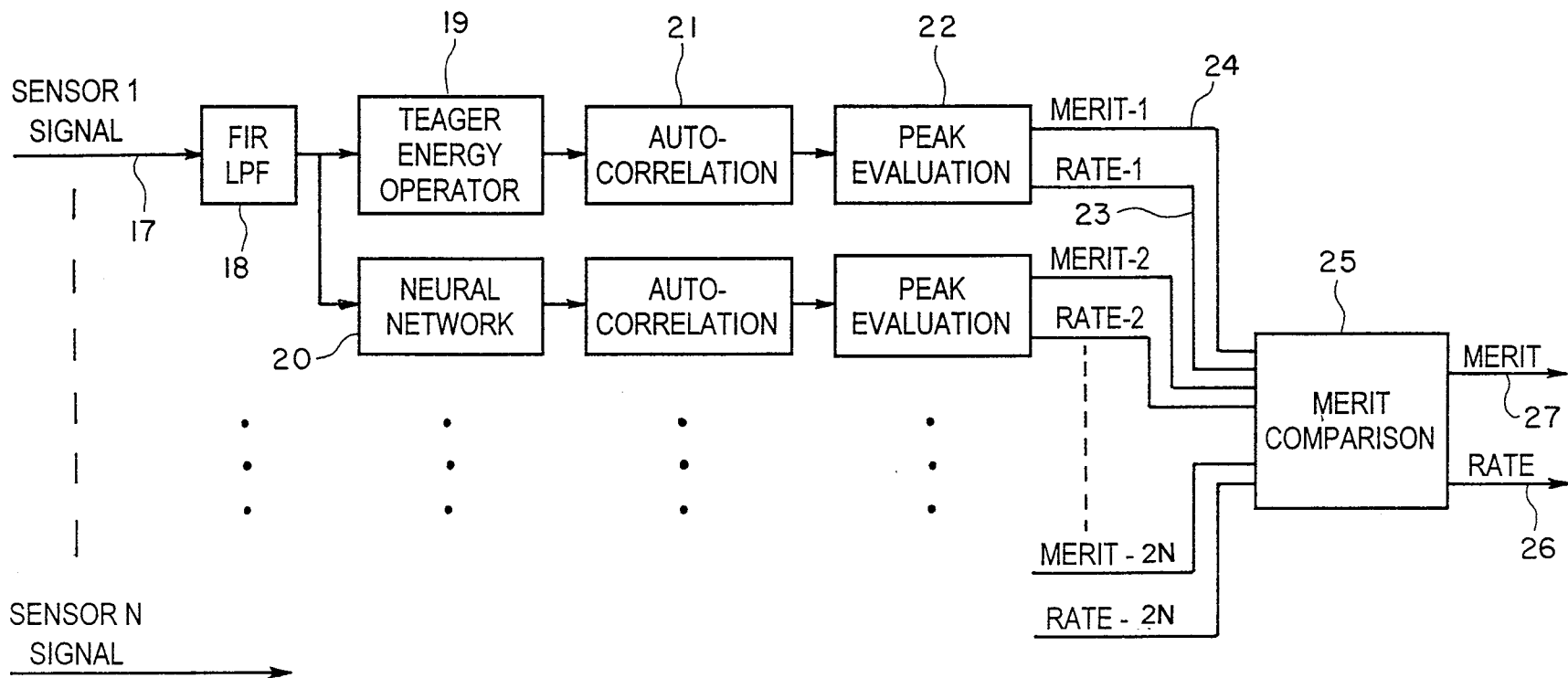


FIG. 3

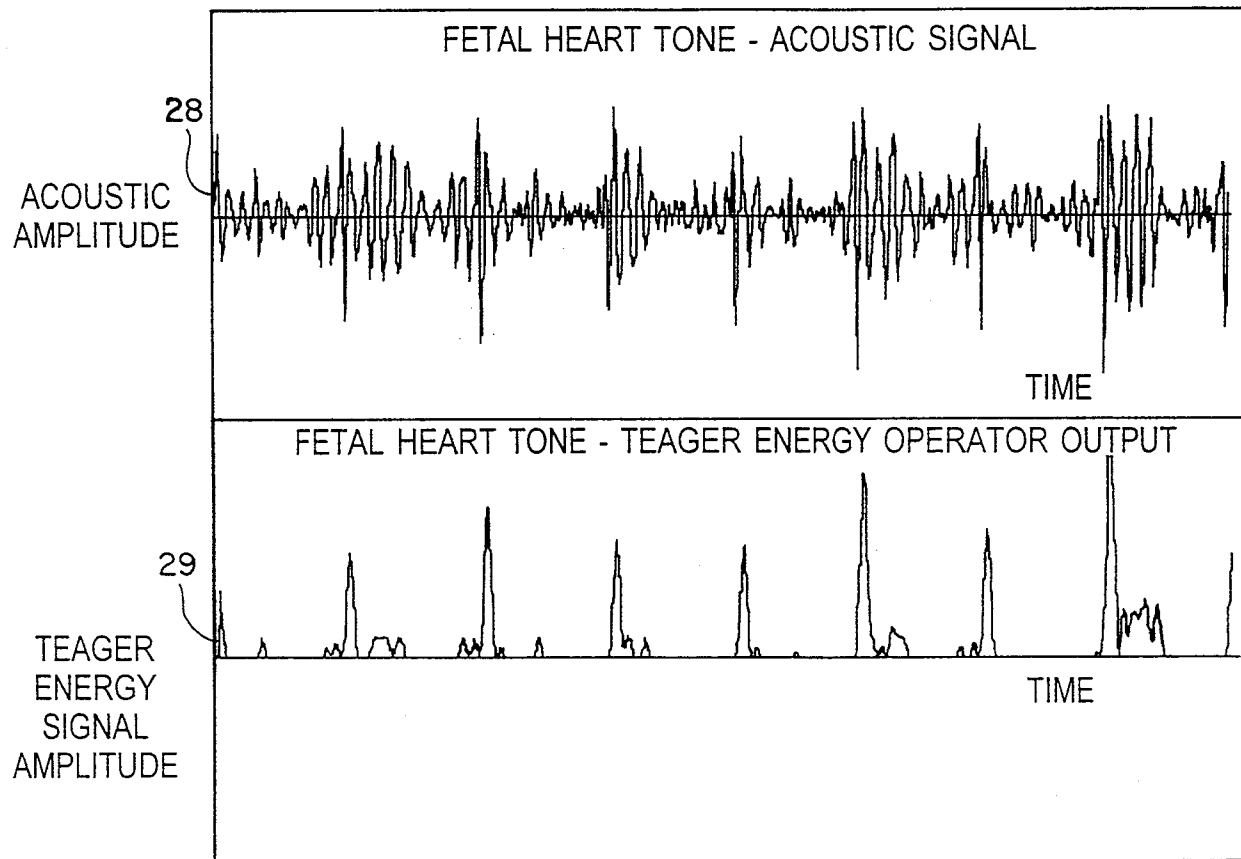


FIG. 4

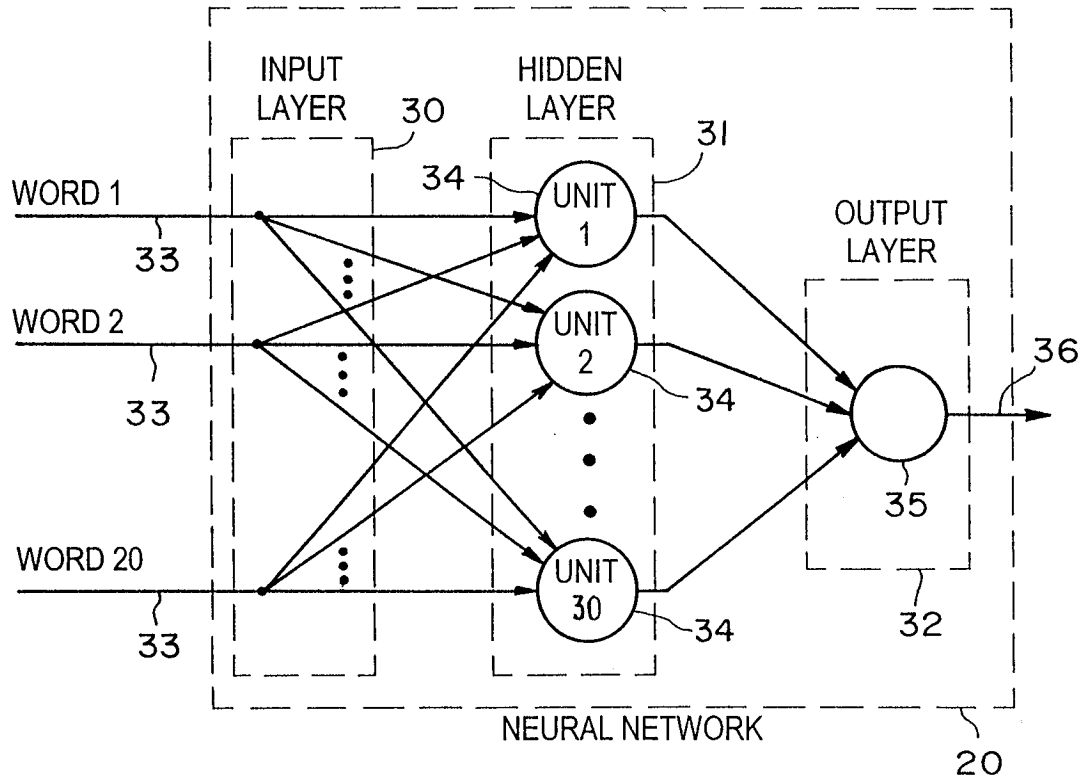


FIG. 5

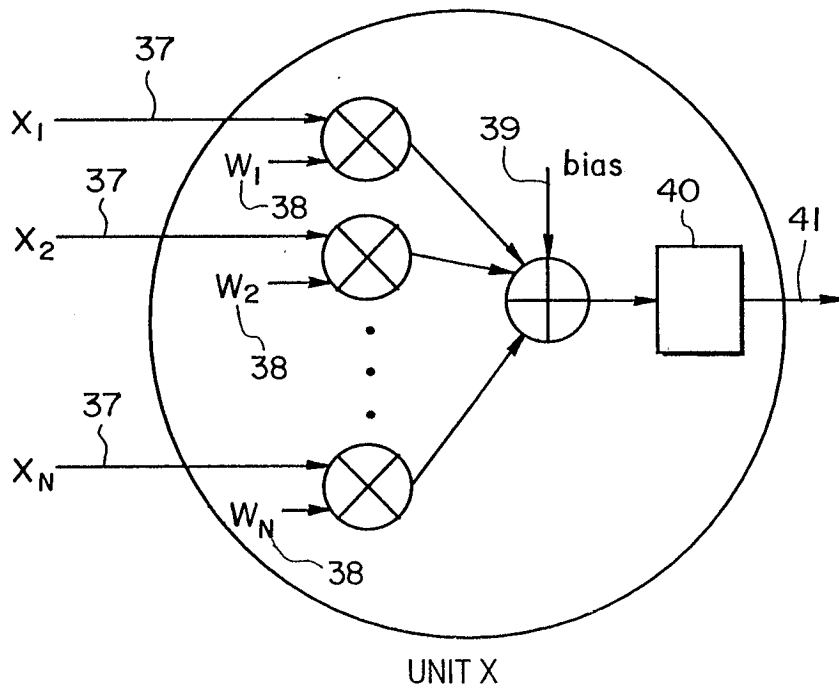


FIG. 6

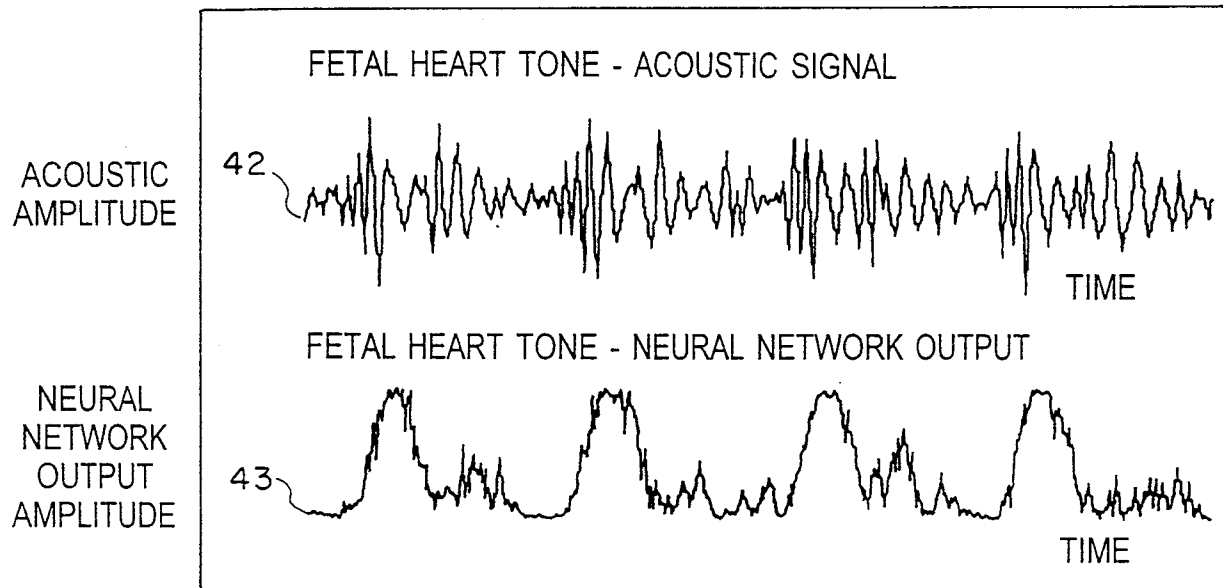


FIG. 7

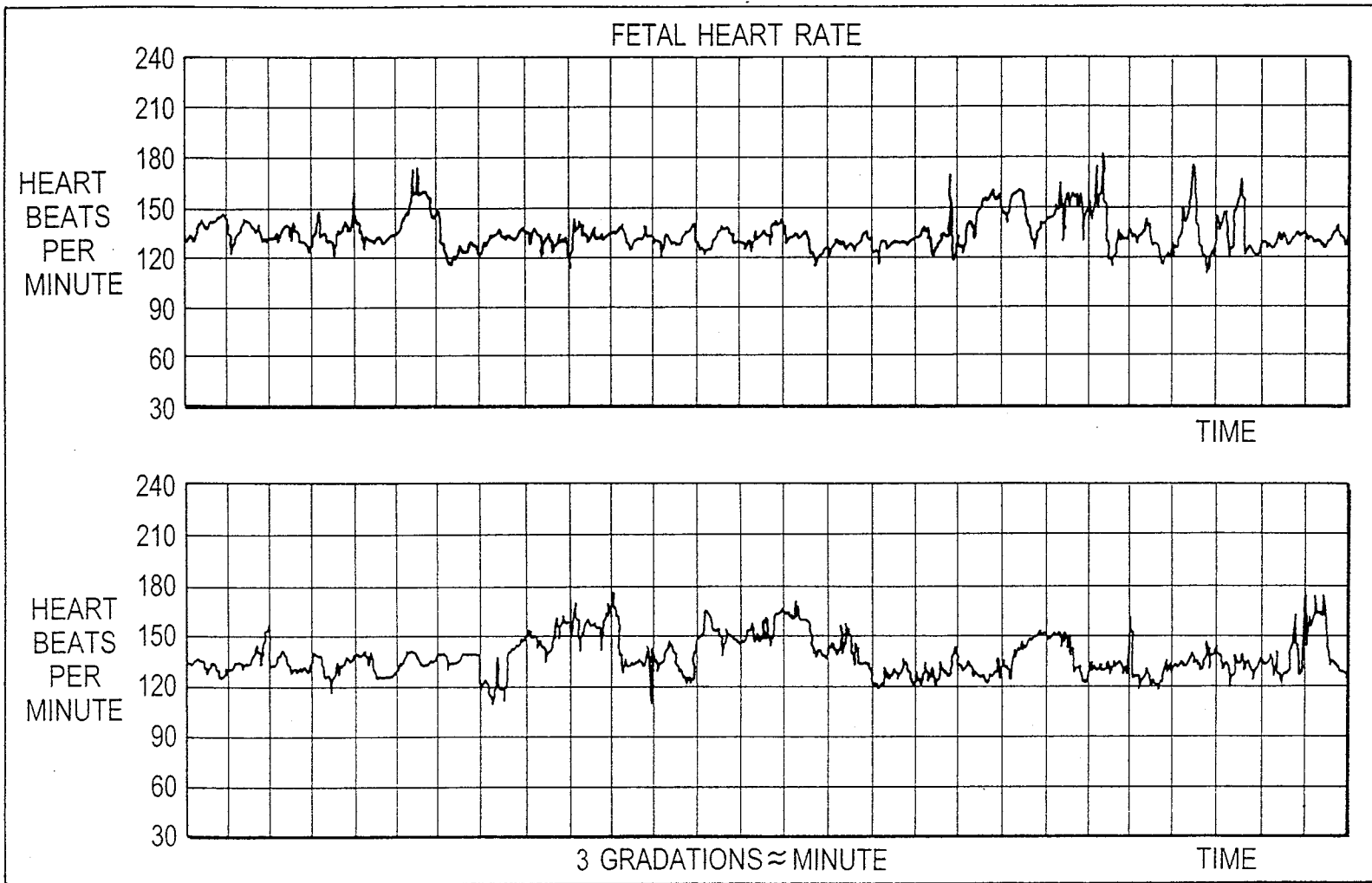


FIG. 8