



Improvement of Ethanol Production in *Saccharomyces cerevisiae* by High-Efficient Disruption of the *ADH2* Gene Using a Novel Recombinant TALEN Vector

Wei Ye, Weimin Zhang*, Taomei Liu, Guohui Tan, Haohua Li and Zilei Huang

State Key Laboratory of Applied Microbiology Southern China, Guangdong Provincial Key Laboratory of Microbial Culture Collection and Application, Guangdong Open Laboratory of Applied Microbiology, Guangdong Institute of Microbiology, Guangzhou, China

OPEN ACCESS

Edited by:

Vijai Kumar Gupta,
National University of Ireland, Galway

Reviewed by:

Gerardo Díaz-Godínez,
Universidad Autónoma de Tlaxcala,
Mexico

Madhu Kamle,
Ben Gurion University of the Negev,
Israel

*Correspondence:

Weimin Zhang
wmzhang@gdim.cn

Specialty section:

This article was submitted to
Microbiotechnology, Ecotoxicology
and Bioremediation,
a section of the journal
Frontiers in Microbiology

Received: 11 January 2016

Accepted: 24 June 2016

Published: 11 July 2016

Citation:

Ye W, Zhang W, Liu T, Tan G, Li H
and Huang Z (2016) Improvement
of Ethanol Production
in *Saccharomyces cerevisiae* by
High-Efficient Disruption of the *ADH2*
Gene Using a Novel Recombinant
TALEN Vector.
Front. Microbiol. 7:1067.
doi: 10.3389/fmicb.2016.01067

Bioethanol is becoming increasingly important in energy supply and economic development. However, the low yield of bioethanol and the insufficiency of high-efficient genetic manipulation approaches limit its application. In this study, a novel transcription activator-like effector nuclease (TALEN) vector containing the left and right arms of TALEN was electroporated into *Saccharomyces cerevisiae* strain As2.4 to sequence the alcohol dehydrogenase gene *ADH2* and the hygromycin-resistant gene *hyg*. Western blot analysis using anti-FLAG monoclonal antibody proved the successful expression of TALE proteins in As2.4 strains. qPCR and sequencing demonstrated the accurate knockout of the 17 bp target gene with 80% efficiency. The TALEN vector and *ADH2* PCR product were electroporated into $\Delta ADH2$ to complement the *ADH2* gene (*ADH2*⁺ As2.4). LC-MS and GC were employed to detect ethanol yields in the native As2.4, $\Delta ADH2$ As2.4, and *ADH2*⁺ As2.4 strains. Results showed that ethanol production was improved by $52.4 \pm 5.3\%$ through the disruption of *ADH2* in As2.4. The bioethanol yield of *ADH2*⁺ As2.4 was nearly the same as that of native As2.4. This study is the first to report on the disruption of a target gene in *S. cerevisiae* by employing Fast TALEN technology to improve bioethanol yield. This work provides a novel approach for the disruption of a target gene in *S. cerevisiae* with high efficiency and specificity, thereby promoting the improvement of bioethanol production in *S. cerevisiae* by metabolic engineering.

Keywords: *Saccharomyces cerevisiae*, Fast TALEN technology, disruption, complement, bioethanol production

INTRODUCTION

With the development of economics and the constant increase in energy consumption, fossil fuels could not meet the requirements of humankind. Bioethanol is becoming increasingly important in energy supply and economic development. However, the traditional bioethanol production has low conversion rate, high cost, and low yield. *Saccharomyces cerevisiae* is a key microorganism that could produce bioethanol; however, the insufficiency of high-efficient genetic manipulation

methods for *S. cerevisiae* limits the wide application of bioethanol. Therefore, genetic engineering approaches with high efficiency for *S. cerevisiae* must be developed to improve bioethanol yield.

Native *S. cerevisiae* can only produce ethanol by utilizing glucose; the disadvantages of low ethanol yield and unavailability of other carbon sources, such as cellulose and starch, prevent the wide use of native *S. cerevisiae* in producing ethanol. Therefore, considerable efforts have been exerted to obtain a genetically engineered *S. cerevisiae* strain that would improve bioethanol yield. Introduction of the exogenous gene encoding xylose isomerase endows *S. cerevisiae* with the ability to utilize xylose for ethanol production (Kuyper et al., 2005; Matsushika et al., 2009). The *GDP1* gene encoding glyceraldehyde-phosphate dehydrogenase was integrated with the genome of *S. cerevisiae* to facilitate NADPH regeneration, thereby promoting bioethanol production from xylose through the pentose pathway (Verho et al., 2003).

Aside from utilizing different carbon sources, genes involved in the ethanol production pathway were also regulated or disrupted to improve bioethanol yield. Alcohol dehydrogenase Adh2p encoded by the *ADH2* gene could catalyze ethanol into aldehyde, and the affinity of Adh2p to ethanol is approximately 10 times higher than that of other isozymes (Wiebe et al., 2007). Thus, many scholars have attempted to regulate or disrupt the expression of the *ADH2* gene. The yeast regulatory protein ADR1 could activate the expression of the *ADH2* gene; thus, the expression of *ADH2* is repressed by controlling the synthesis of the ADR1 protein (Vallari et al., 1992). Many genetic engineering approaches have been employed to delete *ADH2* in *S. cerevisiae*. However, PCR-mediated homologous recombination is only suitable for the genetic manipulation of *S. cerevisiae* with a clear genetic background (Beier et al., 1985; Gray and Honigberg, 2001). The *Cre/loxP* recombination system possesses a short homologous arm but is accompanied by a relatively low efficiency and residual *loxP* site, which may result in the knockout of non-target genes (Gueldener et al., 2002; Fang et al., 2011). Therefore, novel genetic engineering approaches with high efficiency and specificity must be developed to regulate the expression of *ADH2* in *S. cerevisiae*.

Transcription activator-like effector nuclease (TALEN) is a hybrid protein containing DNA-binding and *FokI* cleavage domain. The DNA-binding domain consists of a variable number of tandem repeats of a 34-amino-acid monomer, which specifies the DNA-binding sequence by its 12 and 13th repeat-variable di-residues (RVDs, which specifically recognize a single nucleotide; Bogdanove and Voytas, 2011; Grau et al., 2013; Nakajima and Yaoita, 2013). TALEN technology has been widely used in the genome editing of various species, including human, plant, and zebrafish, because of its high specificity and efficiency (Joung and Sander, 2013; Sakuma et al., 2013; Zhang et al., 2013; Zu et al., 2013; Uhde-stone et al., 2014). However, only few studies have applied TALEN technology in microorganisms because of its relatively complicated reconstruction procedure for TALEN vectors. The establishment of Fast TALEN technology widens the application of TALEN in different fields (Bogdanove and Voytas, 2011; Grau et al., 2013).

In this study, a novel recombinant TALEN vector targeting the 17 bp *ADH2* gene was electroporated into *S. cerevisiae* As2.4. SDS-PAGE and Western blot were performed to confirm the successful introduction of the TALEN vector. The results of sequencing, qRT-PCR, and enzymatic activity assay demonstrated the accurate knockout of the target gene. The disruption of *ADH2* significantly improved the bioethanol yield of *S. cerevisiae* As2.4; the complement of *ADH2* was also used to confirm the function of this gene in *S. cerevisiae* As2.4. This study is the first to report on the disruption of *ADH2* in *S. cerevisiae* using Fast TALEN technology to improve bioethanol yield. The results of this study could widen the application of bioethanol and promote the development of genetic engineering in yeast.

MATERIALS AND METHODS

Strain, Plasmid, and Growth Medium

Saccharomyces cerevisiae As2.4 (GIM 2.167) was provided by Microbial Culture Collection Center of Guangdong Institute of Microbiology. The Fast TALEN Assembly kit and TALEN backbone vector p1301M1 were purchased from SIDANSAI (Shanghai, China). Yeast cells were grown at 30°C in YPD medium (1% yeast extract, 2% peptone, and 2% glucose). The vector maps of Ptalen L48 and Ptalen R36 are shown in **Figure 1A**. Anti-FLAG monoclonal antibody was purchased from CST (Danvers, MA, USA). All primers used in this study are listed in **Table 1**.

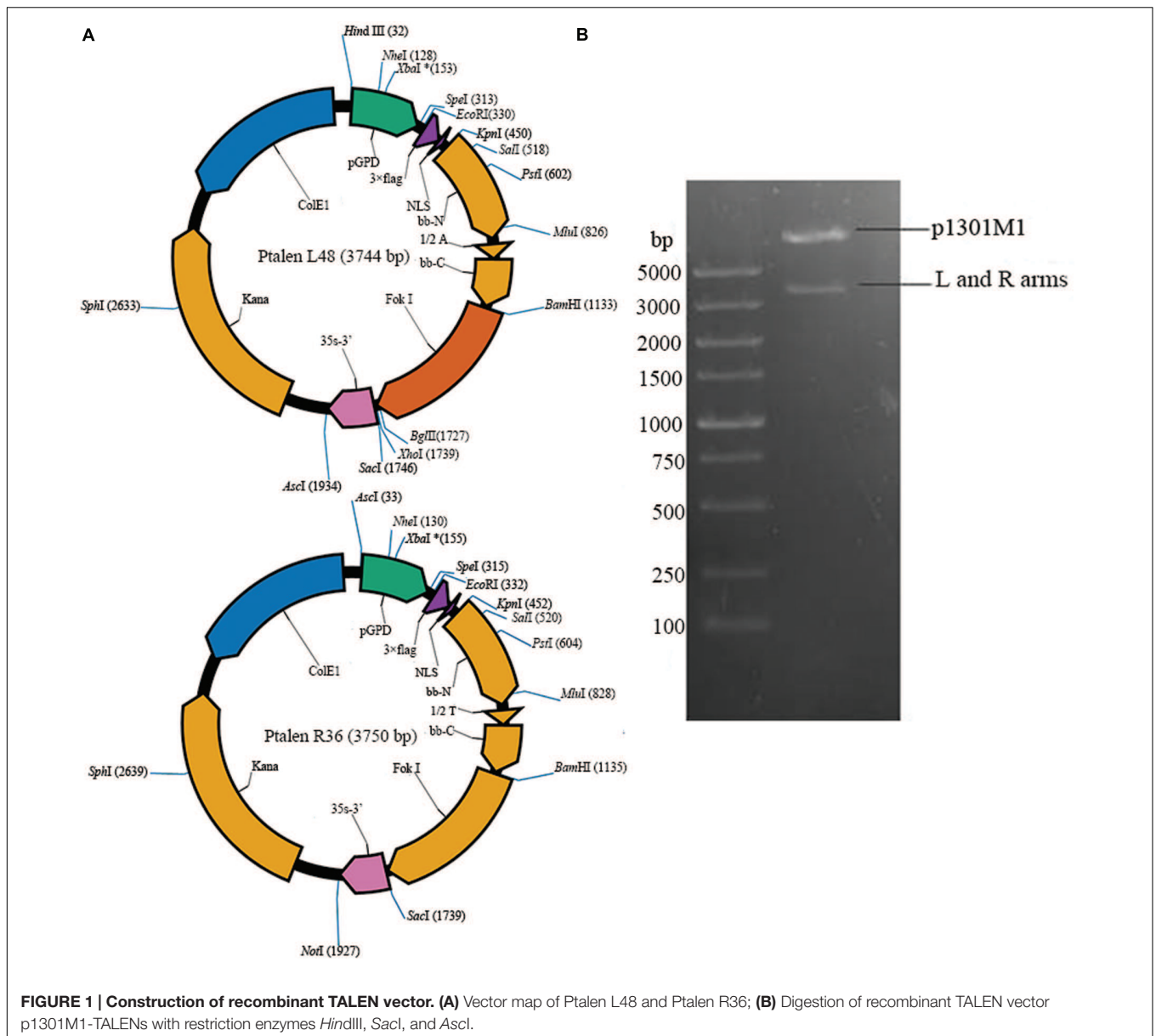
Construction of Recombinant TALEN Vector

Primers F1 and R1 were used to obtain the full sequence of *ADH2*. The 17 bp target sequence of AGTTGGAGCATAAGGAT in *ADH2* was selected using E-TALEN¹. The left and right arms of sequence-specific TALENs (Ptalen L48 and Ptalen R36) targeting 17 bp sequences adjacent to AGTTGGAGCATAAGGAT were constructed through one-step ligation using the FastTALE™ TALEN Assembly Kit (SIDANSAI) in accordance with the manufacturer's instructions. PCR and sequencing confirmed the successful construction of recombinant Ptalen L48 and Ptalen R36. Recombinant Ptalen L48 was digested with restriction enzymes *HindIII* and *AscI*, and Ptalen R36 was digested with restriction enzymes *AscI* and *SacI*. Subcloning vector p1301 M1 containing the hygromycin phosphotransferase (*hyg*) gene was digested with *HindIII* and *SacI*. The resultant larger fragments were recovered, ligated by T4 DNA ligase (Fermentas, USA) at 22°C for 16 h, and then transformed into *Escherichia coli* Top10 competent cells. Positive clones were screened via 100 µg/mL hygromycin and further confirmed through restriction enzyme digestion (*HindIII*, *AscI*, and *SacI*) and sequencing.

Introduction of Recombinant TALEN Vector

Saccharomyces cerevisiae As2.4 was cultivated in YPD medium and collected at the early stage of the logarithmic phase to

¹<http://www.e-talen.org>



prepare competent cells. *As2.4* cells were collected at an OD_{600} of approximately 1.0 via centrifugation at 6000 rpm at 4°C. After incubation on ice for 10 min, the cells were washed twice with ice-cold sterilized water and then resuspended in sterilized water.

TABLE 1 | Primers for the construction of recombinant TALEN vectors.

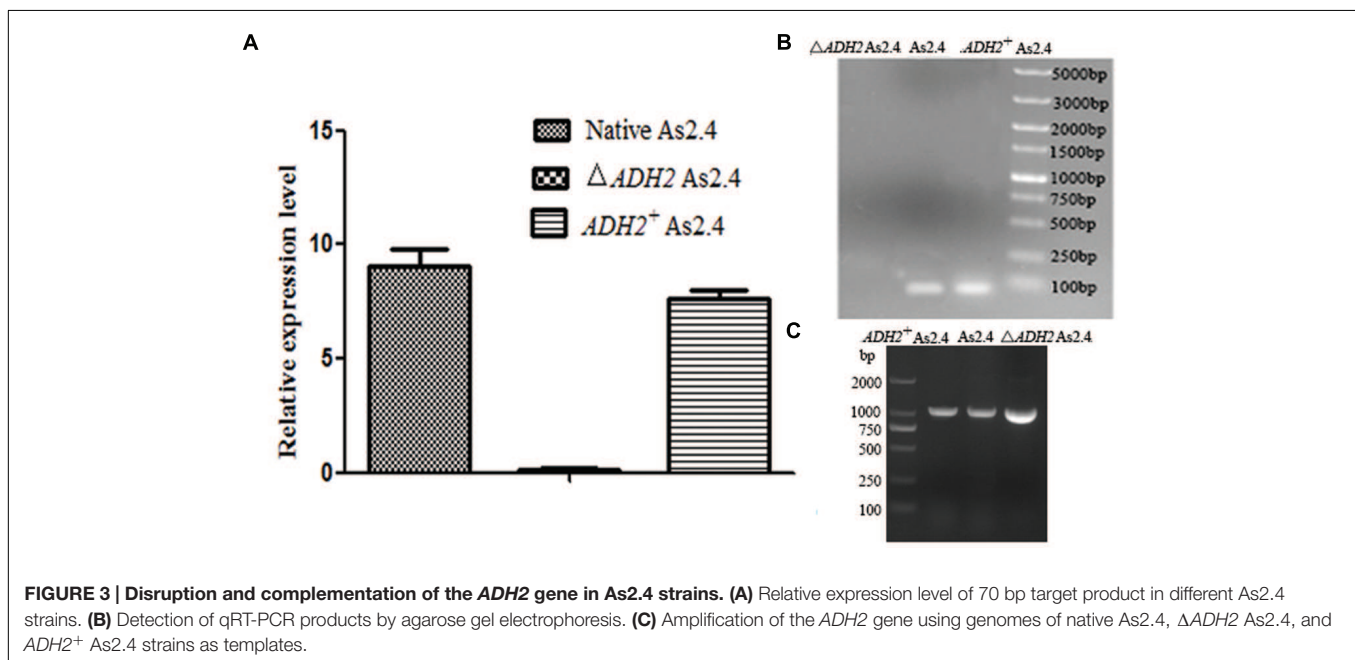
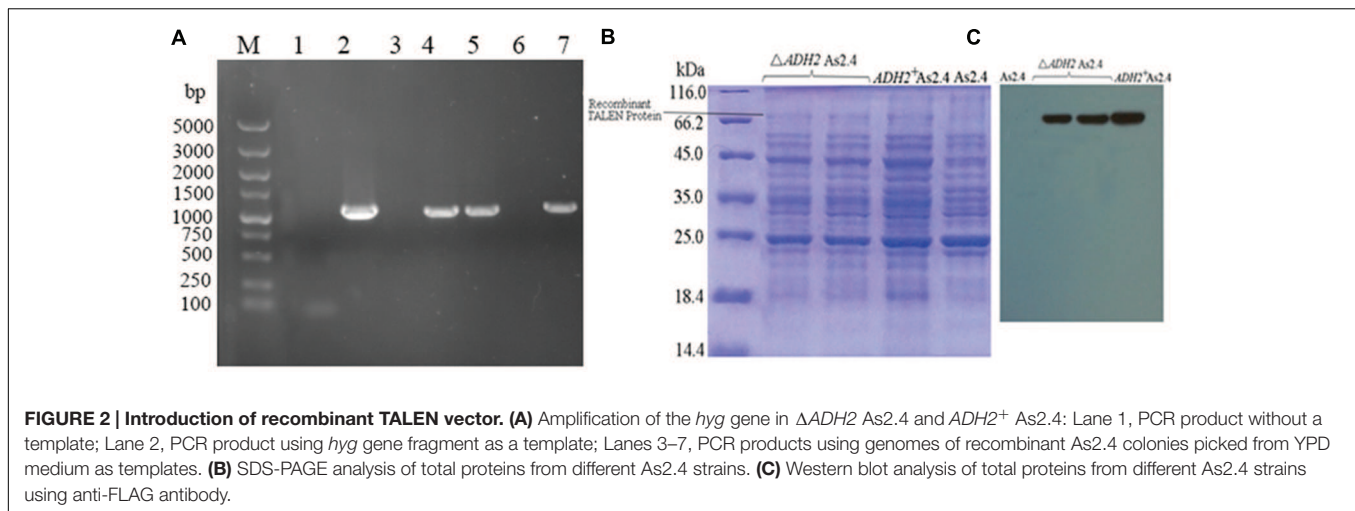
Primers	Sequence
F1	5'-ggaattccatagtctattccagaaactcaaaaag-3'
R1	5'-ggaattccatagtctattccagaaactcaaaaag-3'
F2	5'-ctattccttggccctcgagcag-3'
R2	5'-atgaaaaagcctgaaactcac-3'
F3	5'-ccattatctctcgaatccaacggc-3'
R3	5'-tgggcttggcttggaaactgggat-3'

The recombinant plasmid p1301 M1-TALENs was electroporated into *As2.4*-competent cells under 2.0 kV voltage and 5.0 ms pulse duration across a 2 mm cuvette. Positive clones were selected through PCR using primers F2 and R2 to amplify the *hyg* gene and further confirmed by sequencing.

The PCR products of the *ADH2* gene and recombinant plasmid p1301M1-TALENs were electroporated into $\Delta ADH2$ *As2.4*. PCR and sequencing were performed to confirm the successful complementation of *ADH2* in $\Delta ADH2$ *As2.4* ($ADH2^+$ *As2.4*).

qPCR and Western Blot of Recombinant *As2.4* Strain

After 24 h of incubation, the total RNAs of native *As2.4*, $\Delta ADH2$ *As2.4*, and $ADH2^+$ *As2.4* were extracted, and cDNAs



were obtained using 5× All-In-One MasterMix (Abm, Canada). Primers F3 and R3 combined with cDNAs and 2× SYBR green qPCR Mix (Fermentas, USA) were used to amplify a 70 bp fragment containing the target sequence. GAPDH was employed as a reference gene. qPCR was performed in accordance with the manufacturer's instructions. Each reaction was conducted in biological triplicate. The C_T values obtained were used as the original data to calculate the relative expression level of the target gene to the GAPDH gene by the $2^{-\Delta\Delta C_T}$ method. The qRT-PCR product was also identified by 2% agarose gel electrophoresis.

The total proteins of As2.4 strains were extracted by sonication (50 W at 3 s on, and 3 s off), and the supernatants were obtained by centrifugation at 6000 rpm at 4°C. The supernatants were loaded to 12% SDS-PAGE and then transferred to an NC membrane at a voltage of 100 V for 70 min. The membrane was blocked by 5% non-fat milk and then incubated with anti-FLAG

mouse monoclonal antibody with a dilution factor of 1:2000 at 4°C overnight. The membrane was washed with TBST buffer and then incubated with rabbit anti-mouse IgG with a dilution factor of 1:2000. The target bands were visualized with an ECL kit (Thermo Fisher Scientific, USA) in accordance with the manufacturer's instructions.

Alcohol Dehydrogenase Activity Assay

The cells of native As2.4, $\Delta ADH2$ As2.4, and $ADH2^+$ As2.4 strains were collected via centrifugation, and the proteins were released by a high-pressure cell disruption system (Constant Systems, Warwick, UK) under 1100 bar for three cycles. Supernatants were obtained after centrifugation. NAD I (5.5 mM) was dissolved in 7.5 g/L glycine buffer (pH 9.0) with a volume ratio of 1:5 as a substrate. Supernatants (5 μ L) from different As2.4 strains were added to 100 μ L of the substrate, and 5 μ L

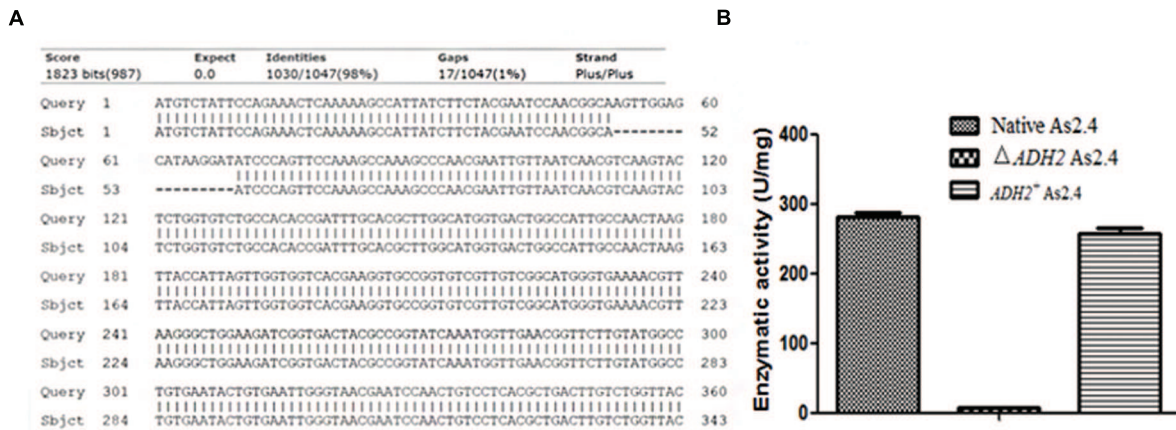


FIGURE 4 | Knockout of 17 bp target sequence. (A) Sequence alignments of *ADH2* gene and PCR products of $\Delta ADH2$ As2.4. **(B)** Alcohol dehydrogenase activities of supernatants from different As2.4 strains after cell disruption.

of purified water was added as blank. After incubation at 37°C for 2 min, 20 μ L of ethanol was added to the mixture and then incubated at 37°C for 5 min. The absorbance of the reaction mix at 340 nm was detected on a microplate reader (Thermo scientific, USA). Enzymatic activity was defined as 1 μ g of NADH released by the catalysis of alcohol dehydrogenase in one minute (Beier et al., 1985).

Analysis of Ethanol Yield in As2.4 Strains

The native As2.4, $\Delta ADH2$ As2.4, and $ADH2^+$ As2.4 strains were inoculated into 150 mL of YPD medium in a 250 mL flask and then cultivated at 30°C at 180 rpm. After 72 h of cultivation, the fermentation liquid was loaded onto LC-MS (Agilent 6430, American) at a flow rate of 0.2 mL/min using C18 column (2 mm \times 150 mm).

Fermentation liquids from the different As2.4 strains in head-space bottles were incubated at 80°C for 30 min. After reaching the equilibrium, a predetermined amount of the head-space of the vial was flushed into the gas chromatograph; isopropanol mixed with ethanol in different ratios was employed as the internal standard. Ethanol yield was identified according to the peak areas of test samples and standard substances. Each analysis was carried out in triplicates.

RESULTS

Construction of p1301 M1-TALENs

The nucleotide sequences encoding repeats of 34 amino acids were assembled using Fast TALEN Assembly kit, inserted into Ptalen L48 and Ptalen R36 (Figure 1A), and then further confirmed by sequencing and restriction enzyme digestion. Digested TALEN arms were ligated with the backbone vector p1301M1. Two bands of approximately 8600 and 4000 bp were obtained after the recombinant plasmid was digested with *HindIII*, *SacI*, and *AseI*, which demonstrated the successful construction of p1301M1-TALENs (Figure 1B).

Introduction of p1301M1-TALENs

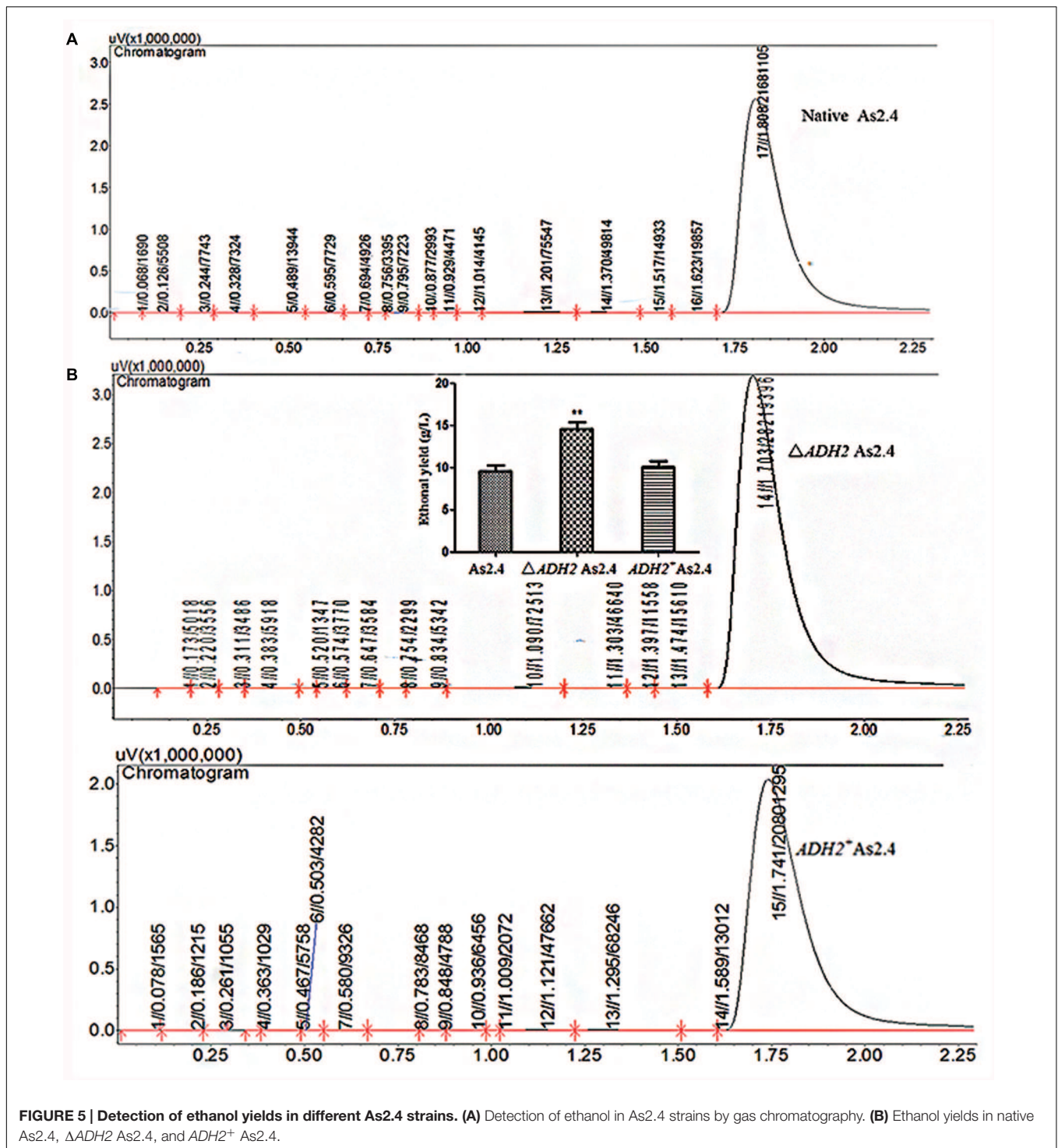
Hygromycin was used to select positive clones, and the successful amplification of approximately 1000 bp *hyg* gene indicated the successful introduction of p1301 M1-TALENs into the native *S. cerevisiae* strain As2.4 (Figure 2A). The acquisition of *hyg* and *ADH2* demonstrated the successful introduction of p1301M1-TALENs combined with *ADH2* into $\Delta ADH2$ As2.4.

The proteins of native As2.4, $\Delta ADH2$ As2.4, and $ADH2^+$ As2.4 were extracted, and the supernatants were loaded onto 12% SDS-PAGE. As shown in Figure 2B, bands of approximately 68 kD corresponding to repeats consisting of 34 amino acids were detected in the $\Delta ADH2$ As2.4 strain and complement strain, whereas no corresponding band was detected in native As2.4.

As shown in Figure 2C, when anti-FLAG monoclonal antibody was used to perform Western blot analysis, target bands of 68 kD were also visualized in $\Delta ADH2$ As2.4 and $ADH2^+$ As2.4, whereas no corresponding band was detected in native As2.4. The result further confirmed the successful introduction of p1301M1-TALENs into the As2.4 strains.

Disruption of *ADH2* in As2.4

The total RNAs of native As2.4, $\Delta ADH2$ As2.4, and $ADH2^+$ As2.4 were extracted to amplify cDNAs. Primers F3 and R3 were used to amplify a 70 bp fragment containing the target sequence. As shown in Figure 3A, results of qRT-PCR analysis indicated that the relative expression levels of the target sequences were much higher in native As2.4 and $ADH2^+$ As2.4 than in $\Delta ADH2$ As2.4. The 70 bp bands were detected in the qRT-PCR products of native As2.4 and $ADH2^+$ As2.4, whereas, no corresponding band was detected in $\Delta ADH2$ As2.4 (Figure 3B). When F1 and R1 were used to perform PCR, a slightly smaller fragment was detected in $\Delta ADH2$ As2.4 compared with those in native As2.4 and $ADH2^+$ As2.4 (Figure 3C). The relative expression levels in native As2.4 and $ADH2^+$ As2.4 were also much higher than that in $\Delta ADH2$ As2.4. The PCR products using primers F1, R1, and genomes of native As2.4, $\Delta ADH2$ As2.4, and $ADH2^+$



As2.4 were sequenced, and alignment results indicated that the 17 bp target sequence AGTTGGAGCATAAGGAT was knocked out accurately (Figure 4A). Twenty colonies on YPD medium were selected, and the *ADH2* gene fragment was amplified and sequenced; the target sequence in 16 colonies was knocked out successfully, indicating that *ADH2* in As2.4 was knocked out using TALEN technology with 80% efficiency.

The alcohol dehydrogenase activities of supernatants from the different As2.4 strains were assayed, as shown in Figure 4B; supernatants of native As2.4, $\Delta ADH2$ As2.4, and $ADH2^+$ As2.4 showed enzymatic activities of 282 ± 10.3 , 5.6 ± 0.5 , and 258 ± 12.5 U/mg, respectively. The results indicated that $\Delta ADH2$ As2.4 rarely showed any alcohol dehydrogenase activity after *ADH2* in As2.4 was disrupted by the recombinant TALEN vector.

Ethanol Yields in Different As2.4 Strains

The ethanol yields in the different As2.4 strains were detected by LC-MS and GC. As shown in **Supplementary Figure S1**, the anion peak of 45.0 corresponding to ethanol was detected in fermentation liquids in the different As2.4 strains and ethanol standards. This result indicates that ethanol was successfully produced by the different As2.4 strains. The peak area of ethanol in $\Delta ADH2$ As2.4 was significantly larger than those in native As2.4 and $ADH2^+$ As2.4 (**Figure 5A**). The ethanol yields in native As2.4, $\Delta ADH2$ As2.4, and $ADH2^+$ As2.4 were 9.6 ± 1.51 , 14.6 ± 1.35 , and 10.1 ± 1.22 g/L, respectively, according to the peak areas of different internal standard substances. Ethanol production was improved by $52.4 \pm 5.3\%$ through the disruption of $ADH2$ in As2.4 and decreased to the same level as that in native As2.4 after $ADH2$ was complemented into $\Delta ADH2$ As2.4 (**Figure 5B**).

DISCUSSION

In this study, the $ADH2$ gene in As2.4 was first disrupted using Fast TALEN technology. The ethanol yield in As2.4 was significantly improved by the disruption of $ADH2$. The illustration of improvement of ethanol yield in *S. cerevisiae* strain using Fast TALEN technology was shown in **Supplementary Figure S2**. The results of this study would lay a foundation for the metabolic engineering of *S. cerevisiae*, thereby promoting the application of bioethanol in different industries.

Alcohol dehydrogenase encoded by $ADH2$ could catalyze ethanol to aldehyde. In consequence, different approaches, including PCR-mediated homologous recombination and Cre-loxP system, were employed to knock out $ADH2$ and improve ethanol yield (Ding et al., 2014; Zheng et al., 2015). However, these approaches showed low efficiency, low specificity, and detectable alcohol dehydrogenase II activity in $ADH2$ gene depletion strain (Wang et al., 2009). Moreover, ethanol yield was only improved by 5–20% through the disruption of $ADH2$. The relatively lower improvement probably resulted from the residual alcohol dehydrogenase II activity after $ADH2$ was knocked out (Wang et al., 2009; Krivoruchko et al., 2011). In the present study, $ADH2$ in As2.4 was disrupted by a novel recombinant TALEN vector with 80% efficiency, and the enzymatic activity assay results revealed that the total proteins from $\Delta ADH2$ As2.4 rarely showed any alcohol dehydrogenase activity toward alcohol. Moreover, the sequencing result revealed no off-target effect during the knockout of $ADH2$ in native *S. cerevisiae* strain As2.4. The ethanol yield in As2.4 was improved by $52.4 \pm 5.3\%$ through the disruption of $ADH2$; the increasing ratio of ethanol yield was much higher than those previously reported (Wang et al.,

REFERENCES

Beier, D. R., Sledziewski, A., and Young, E. T. (1985). Deletion analysis identifies a region, upstream of the $ADH2$ gene of *Saccharomyces cerevisiae*, which is required for ADR1-mediated derepression. *Mol. Cell. Biol.* 5, 1743–1749.

2009; Krivoruchko et al., 2011). $ADH2$ was also knocked into $\Delta ADH2$ As2.4 using Fast TALEN technology. The bioethanol level produced in $ADH2^+$ As2.4 was almost the same as that in native As2.4, which further demonstrated the function of $ADH2$ during bioethanol production in *S. cerevisiae* strain. This Fast TALEN technology for the disruption of $ADH2$ in native As2.4 showed high efficiency and specificity compared with previously reported methods.

CONCLUSION

In this study, $ADH2$ in *S. cerevisiae* As2.4 strain was disrupted and complemented. Ethanol yield was improved by $52.4 \pm 5.3\%$ through the disruption of $ADH2$ in As2.4 using Fast TALEN technology. The complement of $ADH2$ could decrease the ethanol yield in $ADH2^+$ As2.4 to the same level as that in native As2.4. To the best of our knowledge, this study is the first to report on the disruption of a target gene in *S. cerevisiae* using Fast TALEN technology. This study would provide a novel approach for the disruption of a target gene in *S. cerevisiae* with high efficiency and specificity, thereby promoting the improvement of ethanol production in *S. cerevisiae* by metabolic engineering.

AUTHOR CONTRIBUTIONS

WY: design the experiment, WZ: direct the experiment, WY, TL, GT, HL, ZH: did the experiment.

ACKNOWLEDGMENTS

We gratefully acknowledge financial support from National Natural Science Foundation of China (31500037), Natural Science Foundation of Guangdong Province (2015A030310103), Science and Technology Planning Project of Guangdong Province (2016A020222022, 2015A030302061).

SUPPLEMENTARY MATERIAL

The Supplementary Material for this article can be found online at: <http://journal.frontiersin.org/article/10.3389/fmicb.2016.01067>

FIGURE S1 | Detection of ethanol yields in native As2.4, $\Delta ADH2$ As2.4, and $ADH2^+$ As2.4 strains by LC-MS.

FIGURE S2 | The illustration of improvement of ethanol yield in *S. cerevisiae* strain using Fast TALEN technology.

Bogdanove, A. J., and Voytas, D. F. (2011). TAL effectors: customizable proteins for DNA targeting. *Science* 333, 1843–1846. doi: 10.1126/science.1204094

Ding, Y., Yu, A. Q., Li, C. L., Fang, J., Zeng, Y., and Li, D. S. (2014). TALEN-mediated Nanog disruption results in less invasiveness, more chemosensitivity and reversal of EMT in Hela cells. *Oncotarget* 5, 8393–8401. doi: 10.18632/oncotarget.2298

- Fang, F., Salmon, K., Shen, M. W., Aeling, K. A., Ito, E., Irwin, B., et al. (2011). A vector set for systematic metabolic engineering in *Saccharomyces cerevisiae*. *Yeast* 28, 123–136. doi: 10.1002/yea.1824
- Grau, J., Boch, J., and Posch, S. (2013). TALEN offer: genome-wide TALEN off-target prediction. *Bioinformatics* 29, 2931–2932. doi: 10.1093/bioinformatics/btt501
- Gray, M., and Honigberg, S. M. (2001). Effect of chromosomal locus, GC content and length of homology on PCR-mediated targeted gene replacement in *Saccharomyces*. *Nucleic Acids Res.* 29, 5156–5162.
- Guedener, U., Heinisch, J., Koehler, G. J., Voss, D., and Hegemann, J. H. (2002). A second set of loxP marker cassettes for Cre-mediated multiple gene knockouts in budding yeast. *Nucleic Acids Res.* 30:e23.
- Joung, J. K., and Sander, J. D. (2013). TALENs: a widely applicable technology for targeted genome editing. *Nat. Rev. Mol. Cell Biol.* 14, 49–55. doi: 10.1038/nrm3486
- Krivoruchko, A., Siewers, V., and Nielsen, J. (2011). Opportunities for yeast metabolic engineering: lessons from synthetic biology. *Biotechnol. J.* 6, 262–276. doi: 10.1002/biot.201000308
- Kuyper, M., Hartog, M. M., Toirkens, M. J., Almering, M. J., Winkler, A. A., Dijken, J. P., et al. (2005). Metabolic engineering of a xylose-isomerase-expressing *Saccharomyces cerevisiae* strain for rapid anaerobic xylose fermentation. *FEMS Yeast Res.* 5, 399–409. doi: 10.1016/j.femsyr.2004.09.010
- Matsushika, A., Inoue, H., Watanabe, S., Kodaki, T., Makino, K., and Wawayama, S. (2009). Ethanol production from xylose in engineered *Saccharomyces cerevisiae* strains: current state and perspectives. *Appl. Microbiol. Biotechnol.* 84, 37–53. doi: 10.1007/s00253-009-2101-x
- Nakajima, K., and Yaoita, Y. (2013). Comparison of TALEN scaffolds in *Xenopus tropicalis*. *Biology Open* 2, 1364–1370. doi: 10.1242/bio.20136676
- Sakuma, T., Hosoi, S., Woltjen, K., Suzuki, K., Kashiwagi, K., Wada, H., et al. (2013). Efficient TALEN construction and evaluation methods for human cell and animal applications. *Genes Cells* 18, 315–326. doi: 10.1111/gtc.12037
- Uhde-stone, C., Cheung, E., and Lu, B. (2014). TALE activators regulate gene expression in a position- and strand-dependent manner in mammalian cells. *Biochem. Biophys. Res. Commun.* 443, 1189–1194. doi: 10.1016/j.bbrc.2013.12.111
- Vallari, R. C., Cook, W. J., Audino, D. C., Morgan, M. J., Jensen, D. E., Laudano, A. P., et al. (1992). Glucose repression of the yeast ADH2 gene occurs through multiple mechanisms, including control of the protein synthesis of its transcriptional activator, ADR1. *Mol. Cell. Biol.* 12, 1663–1773.
- Verho, R., Londesborough, J., Penttilä, M., and Richard, P. (2003). Engineering redox cofactor regeneration for improved pentose fermentation in *Saccharomyces cerevisiae*. *Appl. Environ. Microbiol.* 69, 5892–5897. doi: 10.1128/AEM.69.10.5892-5897.2003
- Wang, Z. Y., Wang, J. J., Liu, X. F., He, X. P., and Zhang, B. R. (2009). Recombinant industrial brewing yeast strains with ADHIII interruption using self-cloning GSH1+CUP1 cassette. *FEMS Yeast Res.* 9, 574–581. doi: 10.1111/j.1567-1364.2009.00502.x
- Wiebe, M. G., Rintala, E., Tamminen, A., Simolin, H., Salusjärvi, L., Toivari, M., et al. (2007). Central carbon metabolism of *Saccharomyces cerevisiae* in anaerobic, oxygen-limited and fully aerobic steady-state conditions and following a shift to anaerobic conditions. *FEMS Yeast Res.* 8, 140–154. doi: 10.1111/j.1567-1364.2007.00234.x
- Zhang, Y., Zhang, F., Li, X., Baller, J. A., Qi, Y., Starker, C. G., et al. (2013). Transcription activator-like effector nucleases enable efficient plant genome engineering. *Plant Physiol.* 161, 20–27. doi: 10.1104/pp.112.205179
- Zheng, L., Gu, T. P., Weber, A. R., Shen, J. Z., Li, B. Z., Xie, Z. G., et al. (2015). Gadd45a promotes DNA demethylation through TDG. *Nucleic Acids Res.* 43, 3986–3997. doi: 10.1093/nar/gkv283
- Zu, Y., Tong, X. J., Wang, Z. X., Liu, D., Pan, R. C., Li, Z., et al. (2013). TALEN-mediated precise genome modification by homologous recombination in zebrafish. *Nat. Methods* 10, 329–331. doi: 10.1038/nmeth.2374

Conflict of Interest Statement: The authors declare that the research was conducted in the absence of any commercial or financial relationships that could be construed as a potential conflict of interest.

Copyright © 2016 Ye, Zhang, Liu, Tan, Li and Huang. This is an open-access article distributed under the terms of the Creative Commons Attribution License (CC BY). The use, distribution or reproduction in other forums is permitted, provided the original author(s) or licensor are credited and that the original publication in this journal is cited, in accordance with accepted academic practice. No use, distribution or reproduction is permitted which does not comply with these terms.