



Prognostic Value of Plasma and Urine Glycosaminoglycan Scores in Clear Cell Renal Cell Carcinoma

Francesco Gatto¹, Marco Maruzzo², Cristina Magro², Umberto Basso² and Jens Nielsen^{1*}

¹ Department of Biology and Biological Engineering, Chalmers University of Technology, Göteborg, Sweden, ² Medical Oncology Unit 1, IOV Istituto Oncologico Veneto (IRCSS), Padova, Italy

Background: The prognosis of metastatic clear cell renal cell carcinoma (ccRCC) vastly improved since the introduction of antiangiogenic-targeted therapy. However, it is still unclear which biological processes underlie ccRCC aggressiveness and affect prognosis. Here, we checked whether a recently discovered systems biomarker based on plasmatic or urinary measurements of glycosaminoglycans (GAGs) aggregated into diagnostic scores correlated with ccRCC prognosis.

Methods: Thirty-one patients with a diagnosis of ccRCC (23 metastatic) were prospectively enrolled, and their urine and plasma biomarker scores were correlated to progression-free survival (PFS) and overall survival (OS) as either a dichotomous (“Low” vs. “High”) or a continuous variable in a multivariate survival analysis.

Results: The survival difference between “High”- vs. “Low”-scored patients was significant in the case of urine scores (2-year PFS rate = 53.3 vs. 100%, $p = 3 \times 10^{-4}$ and 2-year OS rate = 73.3 vs. 100%, $p = 0.0078$) and in the case of OS for plasma scores (2-year PFS rate = 60 vs. 84%, $p = 0.0591$ and 2-year OS rate = 66.7 vs. 90%, $p = 0.0206$). In multivariate analysis, the urine biomarker score as a continuous variable was an independent predictor of PFS [hazard ratio (HR): 4.62, 95% CI: 1.66–12.83, $p = 0.003$] and OS (HR: 10.13, 95% CI: 1.80–57.04, $p = 0.009$).

Conclusion: This is the first report on an association between plasma or urine GAG scores and the prognosis of ccRCC patients. Prospective trials validating the prognostic and predictive role of this novel systems biomarker are warranted.

Keywords: molecular biomarkers, prognostic biomarkers, kidney cancer, systems medicine

INTRODUCTION

Approximately 50% of cases of clear cell renal cell carcinoma (ccRCC), the most common form of kidney cancer (1), develop metastatic disease, which is usually incurable. In sharp contrast to early diagnosed ccRCC, the median survival of metastatic patients is significantly worse (2, 3). The introduction of sequential use of tyrosine-kinase inhibitors (sunitinib, pazopanib, sorafenib, axitinib, lenvatinib, and cabozantinib) and mTOR inhibitors (temsirolimus and everolimus) as well as immunotherapies (interleukin-2 and nivolumab) vastly improved the prognosis of metastatic ccRCC, though with large variation in overall survival (OS) (4–8). These differences highlight the need to identify the critical biological processes underlying ccRCC aggressiveness in order to

OPEN ACCESS

Edited by:

Fabio Grizzi,
Humanitas Research Hospital, Italy

Reviewed by:

Eric A. Singer,
Rutgers Cancer Institute of New
Jersey, USA
Takeshi Yuasa,
Japanese Foundation for Cancer
Research, Japan

*Correspondence:

Jens Nielsen
nielsenj@chalmers.se

Specialty section:

This article was submitted to
Genitourinary Oncology,
a section of the journal
Frontiers in Oncology

Received: 29 September 2016

Accepted: 14 November 2016

Published: 24 November 2016

Citation:

Gatto F, Maruzzo M, Magro C,
Basso U and Nielsen J (2016)
Prognostic Value of Plasma and Urine
Glycosaminoglycan Scores in Clear
Cell Renal Cell Carcinoma.
Front. Oncol. 6:253.
doi: 10.3389/fonc.2016.00253

discover molecular prognostic markers that can subsequently guide the therapeutic choices (9).

To this end, significant advances have been made in the elucidation of the molecular complexity of ccRCC progression (10–13). Using a systems biology approach, we have recently discovered that transcriptional regulation of glycosaminoglycan (GAG) biosynthesis is a prominent event in ccRCC, exacerbated in metastasis (14). Further, we demonstrated that this regulation is mirrored by systemic alterations in subjects' GAG profile, both in urine and plasma. We designed a plasma and/or urine score that leverages on the GAG profile. These scores reached up to 100% accuracy in the detection of metastatic disease in a case vs. control pilot study conducted on ccRCC subjects. Because of its accuracy and minimal invasiveness, GAG profiling is an attractive novel biomarker for ccRCC and an early example of systems biomarkers.

The primary goal of this observational study was to understand whether the biomarker score correlated with the prognosis of ccRCC patients enrolled in our previous study (14). No pre-specified hypothesis between biomarker scores and survival were made for this exploratory analysis.

SUBJECTS/PATIENTS AND METHODS

Study Design and Patient Selection

This study report was written in compliance with the REMARK guidelines (15). A prospective and consecutive cohort of ccRCC patients had been enrolled in our previous biomarker study at the Instituto Oncologico Veneto, IOV-IRCCS, Padova, Italy. The series was enrolled between January 2013 and June 2015. The patient population considered for the present study included 31 individuals. Inclusion criteria were as follows: a histological diagnosis of ccRCC; any disease stage; patients either receiving systemic treatment for metastatic disease or on follow-up observation without any evidence of disease; and written informed consent. Exclusion criteria were non-clear cell subtypes. Assessment of disease status was based on clinical examination and on computed tomography or other radiological assessments at follow-up. Patients could be receiving different types of oncological treatment at the time of enrollment, but we previously showed that the biomarker score was independent from use or type of drug treatment (14). Patient follow-up period ended on December 2015 and median follow-up time (from day of sampling to event–death or right censoring) was 2.7 years. All patients in this study were examined routinely every 3–6 months during the follow-up period at the same clinic. All deaths were attributed to metastatic cancer. The study was carried out in accordance with the recommendations of the guidelines of the Research Ethics Committee of IOV-IRCCS, Padova, Italy and the participants provided written informed consent in accordance with the Declaration of Helsinki. The present observational study was notified to the Institutional Review Board at IOV-IRCCS, Padova, Italy on January 2013.

Biomarker Determination

The biomarker score was calculated based on plasma and urine samples taken once in the occasion of a follow-up visit. Whole

blood samples were collected in EDTA-coated tubes. The tubes were centrifuged (2,500 g for 15 min at 4°C), and the plasma was extracted and collected in a separate tube. Urine samples were collected in polypropylene tubes. All samples were stored at –80°C until they were shipped for analysis in dry ice. GAG measurements were conducted using capillary electrophoresis with laser-induced fluorescence, as previously described (16, 17). Based on these measurements, the plasma and urine biomarkers were scored according to formula derived previously (14) and here reported:

$$\text{Plasma score} = \frac{[6s \text{ CS}] + \text{CS}_{\text{tot}}}{\frac{3}{10} \frac{[4s \text{ CS}]}{[6s \text{ CS}]} + [\text{Ns HS}]}$$

$$\text{Urine score} = \frac{[\text{Ns6s HS}] + 60 \cdot \text{Charge HS}}{[4s \text{ CS}]},$$

where [6s CS] represents the fraction of the 6-sulfated chondroitin sulfate, [4s CS] represents the fraction of the 4-sulfated chondroitin sulfate, [Ns6s HS] represents the fraction of the N-sulfated 6-sulfated heparan sulfate, [Ns HS] represents the fraction of the N-sulfated heparan sulfate, CS_{tot} is the total concentration of CS (in micrograms per milliliter), and Charge HS is the total fraction of sulfated disaccharides of HS. Of 31 patients enrolled, 30 plasma and 29 urine samples could be successfully scored. Patients with missing scores were omitted from all subsequent analyses.

Survival Analysis

Survival was calculated as the time between the date of sampling and the time of event. The time of event is defined as right censoring (date of last follow-up without the event) or as date of death in case of OS and date of progression in case of progression-free survival (PFS). Univariate and multivariate survival analyses were performed by fitting a Cox proportional hazard model to estimate the odds-ratio for the variables of interest and the 95% confidence interval. The log-rank statistical test was utilized to determine the significance of the regression. Initial candidate variables were either the plasma score (two missing data) or the urine scores (one missing data), as continuous variables computed as per formula above. For each fluid, the scores were also used to dichotomize patients into two groups, “Low” vs. “High” score, where the median score for that fluid was used as an unbiased cut-off. Kaplan–Meier survival curves were fitted for the two groups, and the statistical significance for survival difference was evaluated using the log-rank test. Two-year survival rates were calculated as the survival probability at the start of the time interval that includes the Kaplan–Meier fit for 24 months. In addition, we performed two additional exploratory survival analyses. In the first case, the analysis was carried out only in the 23 patients with metastatic disease, and, in the second case, the analysis was repeated by calculating survival as the time between the date of start of first-line treatment for metastatic disease (instead of date of sample collection) and the time of event (progression or death or right censoring).

Further variables were considered for regression of survival using a univariate Cox model as above: age (continuous, in

years), Eastern Cooperative Oncology Group-ECOG performance status (integer, 0–4), Fuhrman grade (categorical, I or II vs. III or IV, four missing data), Heng score (6) (categorical, good vs. intermediate or poor, one missing data), and the neutrophile-to-lymphocyte ratio (continuous, two missing data). Missing data were omitted. A multivariate Cox model was pre-specified using variables reaching statistical significance in the univariate analysis. In addition, we constructed a multivariate Cox model that featured validated prognostic factors: age and performance status. The validity of the proportional hazard assumption was checked using a two-sided *t*-test between transformed survival time and the scaled Schoenfeld residuals. The sample size was not powered specifically for this study, because no prior knowledge on the prognostic value of the plasma/urine scores was available for ccRCC or any related pathology at the time of design of the pilot study (14). We checked for severe overfitting by performing internal validation of the univariate and multivariate models using a bootstrapping algorithm (1,000 bootstraps) and observing the change in Somers' *D* rank correlation (D_{xy}) statistics in the original datasets as opposed to the test set. The so-corrected D_{xy} is reported as a metric for the predictive discrimination of each individual pre-specified model, where D_{xy} varies between 0

(random discrimination) to 1 (perfect discrimination). Statistical analyses were performed using the packages *survival* and *rms* in R programming language, v. 3.2.3. *p* values <0.05 were considered significant.

RESULTS

The prospective cohort comprised of 31 patients. Twenty-three patients had metastatic disease and were being treated with sunitinib ($N = 16$), everolimus ($N = 3$), pazopanib ($N = 2$), axitinib ($N = 1$), or were not currently treated ($N = 1$). Eight patients had a former diagnosis of ccRCC with no evidence of metastatic disease at the time of acquisition of blood and urine sample and were thus not treated with antineoplastic drugs. Among the 23 patients with metastatic disease, 14 patients had not been previously treated with other oncological agents, 5 had been previously treated with one line of treatment (of which 1 with sunitinib), and 1 had been treated with multiple lines of treatment (1 missing data). For this cohort, we had previously calculated the plasma and urine scores in 29 (93%) and 30 (97%) patients, respectively (14). The median score was 0.89 (IQR: 0.33–0.96) for plasma and 1.18 (IQR: 0.88–1.49) for urine.

TABLE 1 | Clinicopathological features in the prospective cohort, in all patients (first column) or stratified according to “Low” and “High” biomarker score in the urine or plasma.

Factors	All	Stratified upon plasma score		Stratified upon urine score	
	<i>N</i> = 31	Low (<i>N</i> = 15)	High (<i>N</i> = 15)	Low (<i>N</i> = 14)	High (<i>N</i> = 15)
Age	65 (58–77)	67 (61–80)	63 (56–74)	65 (56–74)	65 (58–77)
Gender					
Female	9	7	2	6	3
Male	22	8	13	8	12
BMI	23.6 (22.5–26.7)	23.2 (23.1–24.5)	26.1 (22.3–28.1)	23.0 (20.3–23.9)	26.1 (23.3–28.0)
Smoking habits					
Never smoker	18	9	8	8	9
Ex-smoker	8	1	7	1	6
Presence of metastasis					
Yes	23	7	15	6	15
No	8	8	0	8	0
Tumor stage					
T1/T1a/T1b	9	7	2	7	2
T2/T2a	10	5	5	3	6
T3>	9	2	6	3	5
N0	16	9	7	8	8
N1	1	0	1	0	1
NX	14	6	6	6	6
Fuhrman tumor grade					
Grade 2	14	7	6	5	9
Grade 3	9	4	5	3	5
Grade 4	4	2	2	4	0
ECOG performance status					
0	18	10	8	10	7
1	13	5	7	4	8
Heng classification					
Good	15	10	5	8	6
Intermediate	15	4	10	5	9
Neutrophile-to-lymphocyte					
<3	24	10	13	10	13
≥3	5	3	2	2	2
Biomarker score	–	0.25 (0.14–0.67)	1.37 (1.10–1.74)	0.75 (0.54–1.10)	1.49 (1.24–1.87)

Distributions are summarized as median and interquartile ranges in brackets.

For each fluid, we classified patients as either “Low” or “High” depending if the biomarker score was below or above the median score, which was chosen *a priori* as unbiased cut-off. We provide a comparison of standard clinicopathologic features between the two groups in **Table 1**. None of the patients scored poor according to the Heng model (6).

Kaplan–Meier survival plots for all 31 patients revealed that “Low”-scored patients fared better both in terms of PFS and OS than “High”-scored patients, both in the case of urine and plasma scores. Notably, despite the limited sample size, the difference between “High” vs. “Low” scores was statistically significant in the case of urine [2-year PFS rate = 53.3 (95% CI: 33.2–85.6%) vs. 100% (Not estimable), log-rank test $p = 3 \times 10^{-4}$ and 2-year OS rate = 73.3 (54.0–99.5%) vs. 100% (Not estimable), $p = 0.0078$, **Figure 1**] as well as in the case of OS for plasma [2-year PFS rate = 60 (39.7–90.7%) vs. 84% (66–100%), $p = 0.0591$ and 2-year OS rate = 66.7 (46.6–95.3%) vs. 90% (73.2–100%), $p = 0.0206$,

Figure 2]. When modeled as continuous variables, both scores showed a linear and concordant increase in the risk of both PFS and OS, albeit significant only in the case of urine scores [hazard ratio (HR): 10.13, 95% CI: 1.80–57.04, $p = 0.009$ and $D_{xy} = 0.66$ for OS; HR: 4.62, 95% CI: 1.66–12.83, $p = 0.003$ and $D_{xy} = 0.57$ for PFS]. Estimates for the univariate analysis are reported in **Table 2** for PFS and **Table 3** for OS.

We repeated the survival analysis above to evaluate two additional scenarios: the correlation between biomarker score and survival in the subset of patients with current metastatic ccRCC diagnosis (excluding eight patients with no evidence of disease); and, within this subset, the correlation between the biomarker score and survival calculated from the start of first systemic therapy. In the first scenario, Kaplan–Meier curves for these patients stratified according to either the urine or the plasma biomarker score underscored a negative association with PFS and OS for “High”-scored patients (**Figure 3**), although statistically

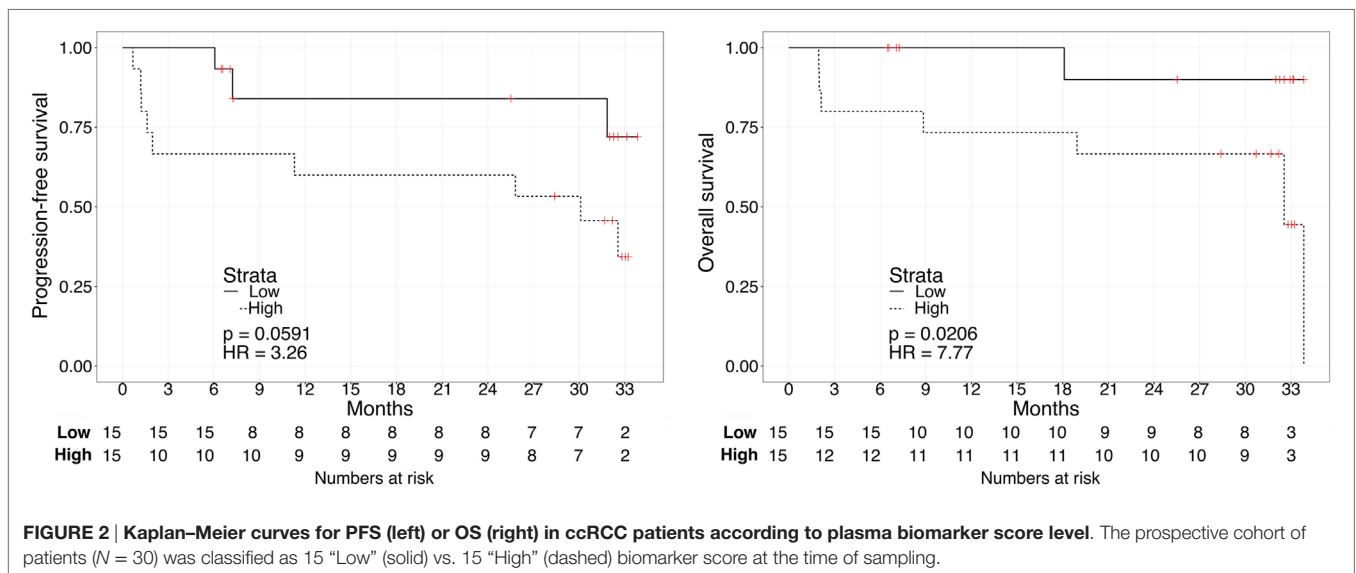
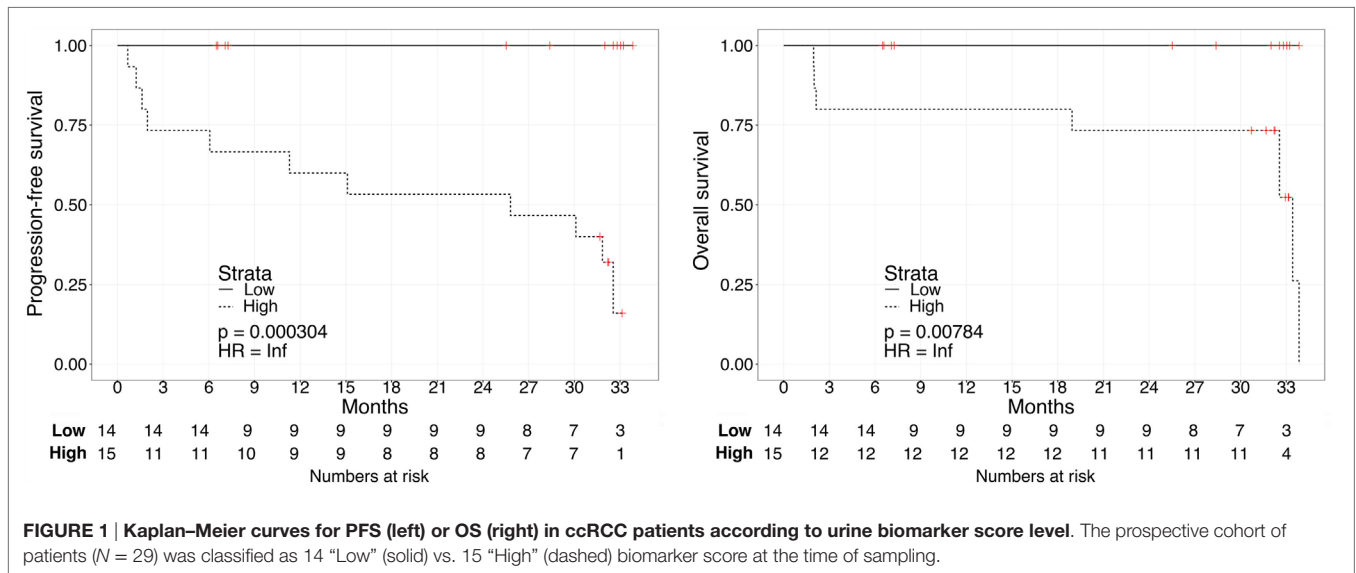


TABLE 2 | Hazard ratio (HR) for clinical factors and PFS (patients with missing scores were omitted).

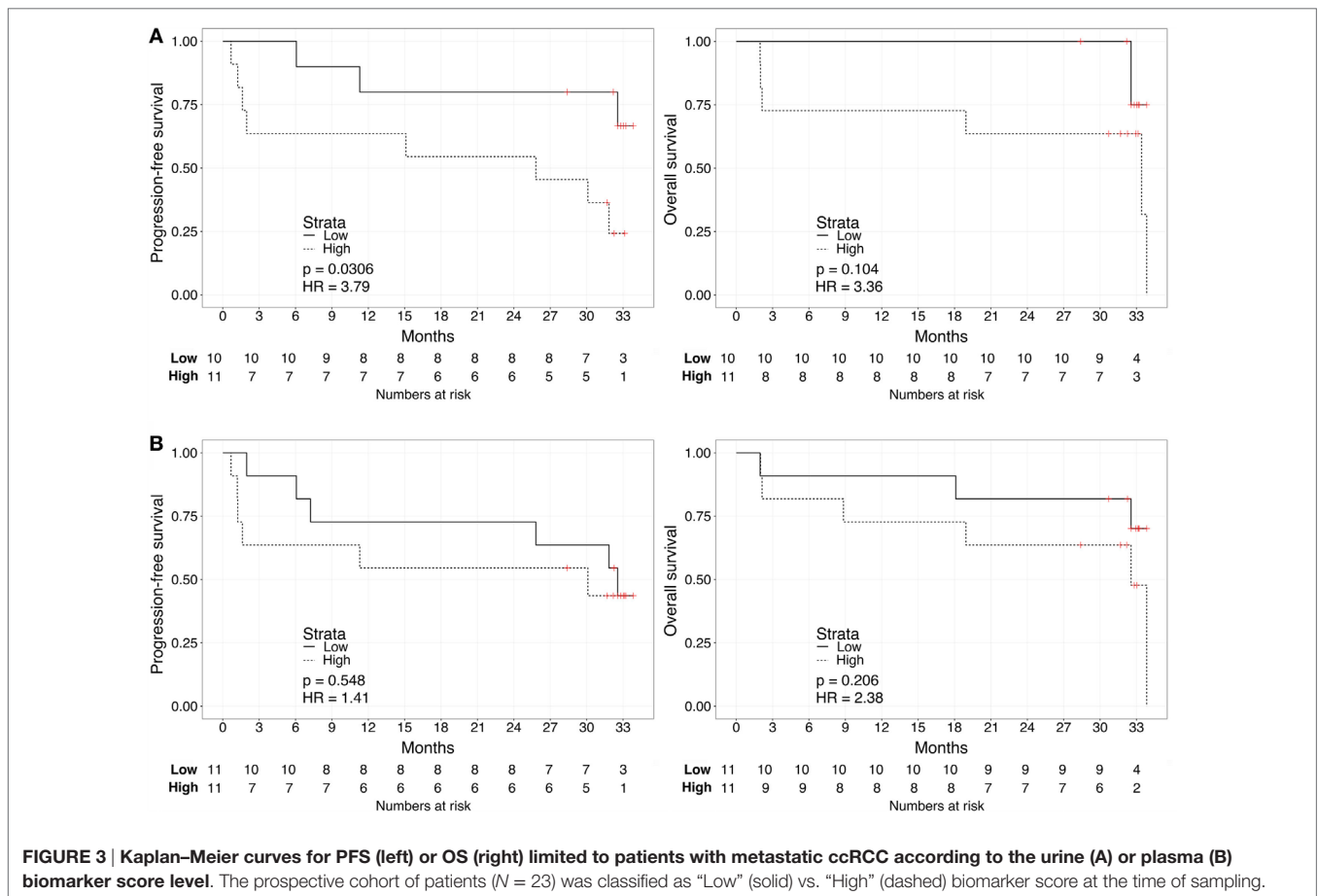
Factors	N (n progr.)	HR	Univariate		Multivariate		
			95% CI	p-Value	HR	95% CI	p-Value
Age	29	0.98	0.94–1.03	0.600			
Fuhrman tumor grade							
Grade 2	14 (7)	1					
Grade >2	13 (4)	0.39	0.11–1.41	0.393			
Performance status							
0	18 (6)	1					
1	13 (7)	2.26	0.75–6.77	0.146			
Heng classification							
Good	11 (6)	1					
Intermediate	14 (7)	0.84	0.28–2.53	0.761			
Neutrophile-to-lymphocyte							
NLR <3	20 (10)	1					
NLR ≥3	4 (3)	2.49	0.68–9.20	0.169	6.92	1.09–44.03	0.040
Urine biomarker score	29	4.62	1.66–12.83	0.003	5.38	1.65–17.57	0.005
Plasma biomarker score	30	1.69	0.71–4.01	0.232			

TABLE 3 | Hazard ratio (HR) for clinical factors and OS (patients with missing scores were omitted).

Factors	N (n death)	HR	Univariate		Multivariate		
			95% CI	p-Value	HR	95% CI	p-Value
Age	29	0.98	0.94–1.03	0.508			
Fuhrman tumor grade							
Grade 2	14 (10)	1					
Grade >2	13 (3)	0.85	0.17–4.26	0.844			
Performance status							
0	18 (7)	1					
1	13 (6)	2.06	0.57–7.42	0.268			
Heng classification							
Good	11 (3)	1					
Intermediate	14 (7)	2.01	0.52–7.79	0.314			
Neutrophile-to-lymphocyte							
NLR <3	20 (7)	1					
NLR ≥3	4 (3)	4.95	1.15–21.28	0.032	17.77	1.58–200.4	0.020
Urine biomarker score	29	10.13	1.80–57.04	0.009	16.43	2.07–130.5	0.008
Plasma biomarker score	30	2.23	0.79–6.25	0.127			

significant only in the case of PFS for urine biomarker [2-year PFS rate = 54.5 (31.8–93.6%) vs. 80% (58.7–100%), $p = 0.0306$]. As continuous variables, we confirmed a statistically significant negative correlation between urine scores and PFS or OS (HR: 3.63, 95% CI: 1.20–10.95, $p = 0.022$ for PFS; HR: 8.40, 95% CI: 1.41–49.96, $p = 0.019$ for OS), while results for the plasma scores were not statistically significant (HR: 0.94, 95% CI: 0.30–2.90, $p = 0.912$ for PFS; HR: 1.64, 95% CI: 0.49–5.45, $p = 0.420$ for OS). In the second scenario, Kaplan–Meier curves showed that “High”-scored patients tended to have worse prognosis in terms of PFS and OS even when survival time was calculated from the date of treatment start (Figure 4). However, the smaller size of this patient subset was underpowered to reach statistical significance in the case of urine scores [2-year PFS rate = 54.5 (31.8–93.6%) vs. 80% (58.7–100%), $p = 0.0525$ and 2-year OS rate = 63.6 (40.7–99.5%) vs. 87.5% (67.3–100%), $p = 0.0675$] as well as plasma scores [2-year PFS rate = 54.5 (31.8–93.6%) vs. 81.8% (61.9–100%), $p = 0.476$ and 2-year OS rate = 63.6 (40.7–99.5%) vs. 90.9% (75.4–100%), $p = 0.113$].

We then evaluated the correlation between survival and other relevant clinical variables of ccRCC: age, performance status, tumor grade, Heng group classification, and the neutrophile-to-lymphocyte ratio (Tables 2 and 3). No significant rank-based internal correlations were observed between these variables and the plasma or urine scores, but age was positively associated with the performance status. We recovered a significant linear increase in the HR for OS (but not PFS) with the neutrophile-to-lymphocyte ratio greater than 3 (HR: 5.03, 95% CI: 1.16–21.80, $p = 0.031$). A multivariate analysis on the plasma or urine biomarker score adjusted for the neutrophile-to-lymphocyte ratio confirmed that the urine biomarker score is an independent predictor of PFS (HR: 4.62, 95% CI: 1.66–12.83, $p = 0.003$) and OS (HR: 10.13, 95% CI: 1.80–57.04, $p = 0.009$), while the plasma biomarker score showed a similar trend without reaching statistical significance (Tables 2 and 3). So-specified multivariate models were also statistically significant and showed remarkable concordance with survival in the case of urine scores (likelihood ratio test $p = 0.003$ and $D_{xy} = 0.63$ for OS, $p = 0.005$ and $D_{xy} = 0.47$



for PFS), yet not for plasma scores ($p = 0.053$ and $D_{xy} = 0.44$ for OS, $p = 0.224$ and $D_{xy} = 0.20$ for PFS).

Distinct pre-specified multivariate Cox models that analyzed the estimated effects of the plasma or urine score and established prognostic factors in ccRCC (age and performance status) also provided evidence of statistical associations with survival in the case of urine scores (likelihood ratio test $p = 0.016$ and $D_{xy} = 0.50$ for OS, $p = 0.021$ and $D_{xy} = 0.48$ for PFS). However, the individual coefficients for the biomarker scores did not reach statistical significance in these models, neither for urine (HR for OS: 4.79, 95% CI: 0.71–32.09, $p = 0.107$ and HR for PFS: 3.01, 95% CI: 0.97–9.35, $p = 0.057$) nor for plasma (HR for OS: 1.69, 95% CI: 0.54–5.31, $p = 0.362$ and HR for PFS: 1.42, 95% CI: 0.51–3.93, $p = 0.497$).

CONCLUSION

While metastatic ccRCC is considered invariably incurable, patients may reach widely different survival rates according to clinical prognostic factors (6). In addition, rare complete responses have been reported with current antiangiogenic oncological targeted therapies, with or without metastasectomy (18). Therefore, it is crucial to determine which biological processes underlie the aggressiveness of ccRCC progression, as these could differentiate

patients at higher risk and advocate distinct strategies of treatment. In the recent years, several molecular prognostic factors have been shown to effectively predict poor prognosis based on altered expression of proteins or small molecules (19–21). However, these biomarkers typically comprise one or few molecules and are, hence, unlikely to capture the complexity of the key biological processes driving ccRCC aggressiveness. On the contrary, these processes emerge from the network of interactions of several biomolecules (22).

In our recent report, we adopted an innovative systems biology approach to identify the importance of GAG biosynthesis regulation in ccRCC. We discovered that the simultaneous measurements of key GAGs in the plasma and urine effectively capture the regulation of this process, and validated the diagnostic value of scores of this novel systems biomarker (14). This systems biomarker agglomerates measurements at the metabolite level, which represents an alternative layer of biological information with respect to genetic, protein, or immunological markers, which have been extensively investigated as potential novel biomarkers for ccRCC (23–25).

In the present study, we aimed to explore the correlation of the biomarker scores with PFS and OS in the prospective cohort of ccRCC patients enrolled in our previous study. A key limitation of this analysis is the small sample size of our cohort, which

on risk groups rather than quantitative prognostic variables. Nevertheless, no prognostic model based on biomarkers has yet been integrated in the routine clinical practice. Limited to blood-based biomarkers, promising results were shown in connection with serum VEGF levels (27) (HR = 1.19 for PFS and 1.39 for OS), serum amyloid A (28) (HR = 2.51–2.81 for OS), and serum insulin-like growth factor-1 (29) (HR = 0.62 for OS). It was noted that these biomarkers could suffer from a number of confounding factors that have no tumor origin (26). For example, VEGF levels may be derived from damaged platelets, while amyloid A is a renowned marker of trauma and various inflammations. Conversely, we and other groups previously provided evidence that the increase of GAG levels in ccRCC patients is likely a product of the tumor itself (30), possibly due to the upregulation of the GAG biosynthetic pathway (14). In addition, the here-reported HRs for the urine score were not only predictors of poor survival in a continuous an independent fashion, but also of much higher magnitude compared to the above mentioned biomarkers (multivariate HR = 5.38 for PFS and 16.43 for OS). However, these values might be inflated by the relatively small sample size, as shown by the wide range of the confidence intervals.

The distribution of GAGs scores appeared to be independent from other prognostic factors such as age, performance status, tumor grade, Heng group classification, and the neutrophil-to-lymphocyte ratio. Since all 8 non-metastatic ccRCC patients had low GAG scores (consistent with the notion that the biomarker correlates with disease severity), we performed an additional analysis in which only the 23 patients with metastatic disease were considered. Once again, GAG score retained its prognostic significance, suggesting that the prognostic role of this biomarker is likely not an expression of the presence of metastatic disease by itself. Finally, even though the samples were taken at different times during patient follow-up, the positive correlation with OS measured since date of first systemic treatment for advanced disease allow us to hypothesize that the prognostic

role of the systems biomarkers is independent from the time point of assessment.

These biomarkers have several potential advantages, the first being the minimal invasiveness of measurements, which enables dynamic monitoring of the disease. The biological significance of GAGs might be related to the role of these macromolecules in the interactions with the extracellular matrix and the activation of chemokines (31, 32), both processes being implicated in tumor metastasis. For example, altered expression of GAGs was associated to the differential invasive phenotype between non-invasive brain lesions and glioblastoma multiforme (33). We speculate that a similar mechanism could apply also to ccRCC; even though mechanistic studies are currently missing.

In conclusion, this is the first report correlating the different profiles of plasma and urine GAGs with PFS and OS of patients with ccRCC. The results of this exploratory study are too preliminary to warrant the clinical utility of the GAG score as a prognostic biomarker for ccRCC patients, but provide strong rationale to conduct prospective confirmatory clinical studies. Overall, capturing the complex expression of GAGs by means of a non-invasive systems biomarker opens an exciting field in the quest to develop prognostic biomarkers for ccRCC.

AUTHOR CONTRIBUTIONS

FG performed statistical analyses. UB, CM, and MM coordinated the blood and urine sampling and collected clinical data. FG and JN conceived and designed the study. FG wrote the manuscript. All the authors edited and approved the manuscript in its final form.

FUNDING

This work was financially supported by the Knut and Alice Wallenberg Foundation.

REFERENCES

- Rini BI, Campbell SC, Escudier B. Renal cell carcinoma. *Lancet* (2009) 373:1119–32. doi:10.1016/S0140-6736(09)60229-4
- Gupta K, Miller JD, Li JZ, Russell MW, Charbonneau C. Epidemiologic and socioeconomic burden of metastatic renal cell carcinoma (mRCC): a literature review. *Cancer Treat Rev* (2008) 34:193–205. doi:10.1016/j.ctrv.2007.12.001
- Wahlgren T, Harmenberg U, Sandström P, Lundstam S, Kowalski J, Jakobsson M, et al. Treatment and overall survival in renal cell carcinoma: a Swedish population-based study (2000–2008). *Br J Cancer* (2013) 108:1541–9. doi:10.1038/bjc.2013.119
- Motzer RJ, Barrios CH, Kim TM, Falcon S, Cosgriff T, Harker WG, et al. Phase II randomized trial comparing sequential first-line everolimus and second-line sunitinib versus first-line sunitinib and second-line everolimus in patients with metastatic renal cell carcinoma. *J Clin Oncol* (2014) 32:2765–72. doi:10.1200/JCO.2013.54.6911
- Larkin J, Paine A, Foley G, Mitchell S, Chen C. First-line treatment in the management of advanced renal cell carcinoma: systematic review and network meta-analysis. *Expert Opin Pharmacother* (2015) 16:1915–27. doi:10.1517/14656566.2015.1058359
- Heng DY, Signorovitch J, Swallow E, Li N, Zhong Y, Qin P, et al. Comparative effectiveness of second-line targeted therapies for metastatic renal cell carcinoma: a systematic review and meta-analysis of real-world observational studies. *PLoS One* (2014) 9:e114264. doi:10.1371/journal.pone.0114264
- Choueiri TK, Escudier B, Powles T, Tannir NM, Mainwaring PN, Rini BI, et al. Cabozantinib versus everolimus in advanced renal cell carcinoma (METEOR): final results from a randomised, open-label, phase 3 trial. *Lancet Oncol* (2016) 17:917–27. doi:10.1016/S1470-2045(16)30107-3
- Motzer RJ, Escudier B, McDermott DF, George S, Hammers HJ, Srinivas S, et al. Nivolumab versus everolimus in advanced renal-cell carcinoma. *N Engl J Med* (2015) 373:1803–13. doi:10.1056/NEJMoa1510665
- Modi PK, Farber NJ, Singer EA. Precision oncology: identifying predictive biomarkers for the treatment of metastatic renal cell carcinoma. *Transl Cancer Res* (2016) 5:S76–80. doi:10.21037/tcr.2016.06.05
- Gatto F, Nookaew I, Nielsen J. Chromosome 3p loss of heterozygosity is associated with a unique metabolic network in clear cell renal carcinoma. *Proc Natl Acad Sci U S A* (2014) 111:E866–75. doi:10.1073/pnas.1319196111
- Creighton CJ, Morgan M, Gunaratne PH, Wheeler DA, Gibbs RA, Robertson A, et al. Comprehensive molecular characterization of clear cell renal cell carcinoma. *Nature* (2013) 499(7456):43–9. doi:10.1038/nature12222
- Hakimi AA, Reznik E, Lee CH, Creighton CJ, Brannon AR, Luna A, et al. An integrated metabolic Atlas of clear cell renal cell carcinoma. *Cancer Cell* (2016) 29:104–16. doi:10.1016/j.ccell.2015.12.004
- Frew IJ, Moch H. A clearer view of the molecular complexity of clear cell renal cell carcinoma. *Annu Rev Pathol* (2015) 10:263–89. doi:10.1146/annurev-pathol-012414-040306

14. Gatto F, Volpi N, Nilsson H, Nookaew I, Maruzzo M, Roma A, et al. Glycosaminoglycan profiling in patients' plasma and urine predicts the occurrence of metastatic clear cell renal cell carcinoma. *Cell Rep* (2016) 15:1822–36. doi:10.1016/j.celrep.2016.04.056
15. Altman DG, McShane LM, Sauerbrei W, Taube SE. Reporting recommendations for tumor marker prognostic studies (REMARK): explanation and elaboration. *PLoS Med* (2012) 9:e1001216. doi:10.1371/journal.pmed.1001216
16. Galeotti F, Coppa GV, Zampini L, Maccari F, Galeazzi T, Padella L, et al. Capillary electrophoresis separation of human milk neutral and acidic oligosaccharides derivatized with 2-aminoacridone. *Electrophoresis* (2014) 35:811–8. doi:10.1002/elps.201300490
17. Kottler R, Mank M, Hennig R, Müller-Werner B, Stahl B, Reichl U, et al. Development of a high-throughput glycoanalysis method for the characterization of oligosaccharides in human milk utilizing multiplexed capillary gel electrophoresis with laser-induced fluorescence detection. *Electrophoresis* (2013) 34:2323–36. doi:10.1002/elps.201300016
18. Albiges L, Oudard S, Negrier S, Caty A, Gravis G, Joly F, et al. Complete remission with tyrosine kinase inhibitors in renal cell carcinoma. *J Clin Oncol* (2012) 30:482–7. doi:10.1200/JCO.2011.37.2516
19. Jonasch E, Futreal PA, Davis IJ, Bailey ST, Kim WY, Brugarolas J, et al. State of the science: an update on renal cell carcinoma. *Mol Cancer Res* (2012) 10:859–80. doi:10.1158/1541-7786.MCR-12-0117
20. Moch H, Srigley J, Delahunt B, Montironi R, Egevad L, Tan PH. Biomarkers in renal cancer. *Virchows Arch* (2014) 464:359–65. doi:10.1007/s00428-014-1546-1
21. Parker AS, Eckel-Passow JE, Serie D, Hilton T, Parasramka M, Joseph RW, et al. Higher expression of topoisomerase II alpha is an independent marker of increased risk of cancer-specific death in patients with clear cell renal cell carcinoma. *Eur Urol* (2014) 66:929–35. doi:10.1016/j.eururo.2013.12.017
22. Barabasi AL, Oltvai ZN. Network biology: understanding the cell's functional organization. *Nat Rev Genet* (2004) 5:101–13. doi:10.1038/nrg1272
23. Rossi E, Fassan M, Aieta M, Zilio F, Celadin R, Borin M, et al. Dynamic changes of live/apoptotic circulating tumour cells as predictive marker of response to sunitinib in metastatic renal cancer. *Br J Cancer* (2012) 107:1286–94. doi:10.1038/bjc.2012.388
24. Maroto P, Rini B. Molecular biomarkers in advanced renal cell carcinoma. *Clin Cancer Res* (2014) 20:2060–71. doi:10.1158/1078-0432.CCR-13-1351
25. Maruzzo M, Basso U, Diminutto A, Roma A, Zustovich F, Brunello A, et al. Role of dose exposure and inflammatory status in a single center, real-world analysis of sunitinib in patients with metastatic renal cell carcinoma. *Future Oncol* (2016) 12:909–19. doi:10.2217/fo.16.14
26. Sun M, Shariat SF, Cheng C, Ficarra V, Murai M, Oudard S, et al. Prognostic factors and predictive models in renal cell carcinoma: a contemporary review. *Eur Urol* (2011) 60:644–61. doi:10.1016/j.eururo.2011.06.041
27. Negrier S, Perol D, Menetrier-Caux C, Escudier B, Pallardy M, Ravaud A, et al. Interleukin-6, interleukin-10, and vascular endothelial growth factor in metastatic renal cell carcinoma: prognostic value of interleukin-6 – from the Groupe Francais d'Immunotherapie. *J Clin Oncol* (2004) 22:2371–8. doi:10.1200/JCO.2004.06.121
28. Ramankulov A, Lein M, Johannsen M, Schrader M, Miller K, Loening SA, et al. Serum amyloid A as indicator of distant metastases but not as early tumor marker in patients with renal cell carcinoma. *Cancer Lett* (2008) 269:85–92. doi:10.1016/j.canlet.2008.04.022
29. Rasmuson T, Grankvist K, Jacobsen J, Olsson T, Ljungberg B. Serum insulin-like growth factor-1 is an independent predictor of prognosis in patients with renal cell carcinoma. *Acta Oncol* (2004) 43:744–8. doi:10.1080/02841860410017260
30. Ucakturk E, Akman O, Sun X, Baydar DE, Dolgun A, Zhang F, et al. Changes in composition and sulfation patterns of glycoaminoglycans in renal cell carcinoma. *Glycoconj J* (2016) 33:103–12. doi:10.1007/s10719-015-9643-1
31. Afratis N, Gialeli C, Nikitovic D, Tseggenidis T, Karousou E, Theocharis AD, et al. Glycosaminoglycans: key players in cancer cell biology and treatment. *FEBS J* (2012) 279:1177–97. doi:10.1111/j.1742-4658.2012.08529.x
32. Taylor KR, Gallo RL. Glycosaminoglycans and their proteoglycans: host-associated molecular patterns for initiation and modulation of inflammation. *FASEB J* (2006) 20:9–22. doi:10.1096/fj.05-4682rev
33. Silver DJ, Siebzehnrubl FA, Schildts MJ, Yachnis AT, Smith GM, Smith AA, et al. Chondroitin sulfate proteoglycans potently inhibit invasion and serve as a central organizer of the brain tumor microenvironment. *J Neurosci* (2013) 33:15603–17. doi:10.1523/JNEUROSCI.3004-12.2013

Conflict of Interest Statement: FG and JN are listed as inventors in a patent application related to the biomarker described in this study. UB, CM, and MM declare no conflict of interest.

Copyright © 2016 Gatto, Maruzzo, Magro, Basso and Nielsen. This is an open-access article distributed under the terms of the Creative Commons Attribution License (CC BY). The use, distribution or reproduction in other forums is permitted, provided the original author(s) or licensor are credited and that the original publication in this journal is cited, in accordance with accepted academic practice. No use, distribution or reproduction is permitted which does not comply with these terms.