



# Genetic variation modifies risk for neurodegeneration based on biomarker status

Timothy J. Hohman\*, Mary Ellen I. Koran and Tricia A. Thornton-Wells, for the Alzheimer's Neuroimaging Initiative†

Department of Molecular Physiology and Biophysics, Center for Human Genetics and Research, Vanderbilt University School of Medicine, Nashville, TN, USA

## Edited by:

George E. Barreto, Pontificia Universidad Javeriana, Colombia

## Reviewed by:

Niklas Mattsson, University of Gothenburg, Sweden  
Lori Chibnik, Brigham and Women's Hospital/Harvard Medical School, USA

## \*Correspondence:

Timothy J. Hohman, Research Instructor, Vanderbilt Memory and Alzheimer's Center, Vanderbilt University Medical Center, 2525 West End Ave., 12th floor - Suite 1200, Nashville, TN 37232, USA  
e-mail: [timothyjhohman@gmail.com](mailto:timothyjhohman@gmail.com)

† Data used in preparation of this article were obtained from the Alzheimer's Disease Neuroimaging Initiative (ADNI) database ([adni.loni.ucla.edu](http://adni.loni.ucla.edu)). As such, the investigators within the ADNI contributed to the design and implementation of ADNI and/or provided data but did not participate in analysis or writing of this report. A complete listing of ADNI investigators can be found at: [http://adni.loni.usc.edu/wp-content/uploads/how\\_to\\_apply/ADNI\\_Acknowledgement\\_List.pdf](http://adni.loni.usc.edu/wp-content/uploads/how_to_apply/ADNI_Acknowledgement_List.pdf)

**Background:** While a great deal of work has gone into understanding the relationship between Cerebrospinal fluid (CSF) biomarkers, brain atrophy, and disease progression, less work has attempted to investigate how genetic variation modifies these relationships. The goal of this study was two-fold. First, we sought to identify high-risk vs. low-risk individuals based on their CSF tau and A $\beta$  load and characterize these individuals with regard to brain atrophy in an AD-relevant region of interest. Next, we sought to identify genetic variants that modified the relationship between biomarker classification and neurodegeneration.

**Methods:** Participants were categorized based on established cut-points for biomarker positivity. Mixed model regression was used to quantify longitudinal change in the left inferior lateral ventricle. Interaction analyses between single nucleotide polymorphisms (SNPs) and biomarker group status were performed using a genome wide association study (GWAS) approach. Correction for multiple comparisons was performed using the Bonferroni procedure.

**Results:** One intergenic SNP (rs4866650) and one SNP within the *SPTLC1* gene (rs7849530) modified the association between amyloid positivity and neurodegeneration. A transcript variant of *WDR11-AS1* gene (rs12261764) modified the association between tau positivity and neurodegeneration. These effects were consistent across the two sub-datasets and explained approximately 3% of variance in ventricular dilation. One additional SNP (rs6887649) modified the association between amyloid positivity and baseline ventricular volume, but was not observed consistently across the sub-datasets.

**Conclusions:** Genetic variation modifies the association between AD biomarkers and neurodegeneration. Genes that regulate the molecular response in the brain to oxidative stress may be particularly relevant to neural vulnerability to the damaging effects of amyloid- $\beta$ .

**Keywords:** Alzheimer's disease (AD), MRI, CSF biomarkers, gene-environment interaction, genomics, amyloid, tau proteins

## INTRODUCTION

Competing models of the sporadic Alzheimer's disease (AD) cascade have debated whether the two primary pathologies, amyloid-beta (A $\beta$ ) plaques and tau neurofibrillary tangles, are causally related, with some suggesting that early amyloid pathology drives later tau pathology and others suggesting both pathologies arrive through distinct, unrelated molecular pathways (Small and Duff, 2008; Jack et al., 2010, 2013). In either case, it is theorized that the onset of these protein pathologies ultimately drives synaptic changes and the neurodegenerative cascade resulting in cognitive impairment.

Cerebrospinal fluid (CSF) measures of pathology *in vivo* have been applied alongside magnetic resonance imaging (MRI) to elucidate the relation between biomarkers of pathology and neurodegeneration and as combined measures of risk for disease onset and progression. To date, higher levels of CSF tau and

lower levels of CSF A $\beta$  have been shown to predict decreases in total and regional brain volume longitudinally, though regional patterns of atrophy appears to vary across diagnostic categories (Tosun et al., 2010). Other results have suggested that decreased CSF A $\beta$  levels are related to atrophy rates in healthy normal adults (Fagan et al., 2009; Fjell et al., 2010; Schott et al., 2010), whereas either biomarker can predict atrophy in Mild Cognitive Impairment (MCI) and AD (Sluimer et al., 2010). Parallel research has demonstrated that the combined diagnostic utility of both CSF and MRI biomarkers is greater than either measure independently (Vemuri et al., 2009a,b; Sluimer et al., 2010; Davatzikos et al., 2011). Moreover, both CSF and MRI biomarkers appear to provide independent contributions to AD diagnosis, further suggesting each marks a distinct biological process in the AD cascade (Schoonenboom et al., 2008).

While a great deal of work has gone into understanding the relationship between CSF biomarkers, brain atrophy, and disease progression, few studies have attempted to investigate how genetic variation modifies these relationships. One possibility is that single genes are associated with biomarker load. Indeed, previous work has demonstrated a relationship between CSF A $\beta$  and the *APOE* genotype (Morris et al., 2010), and more recently genome-wide association studies (GWAS) have identified genetic variants that are related to CSF biomarkers (Kim et al., 2011). A second possibility is that genes interact to confer risk or resilience from biomarker load. Work in our lab has identified novel gene-gene interactions that are related to A $\beta$  load as measured with positron emission tomography (PET) (Hohman et al., 2013, 2014b; Koran et al., 2014b) and brain atrophy measured with MRI (Meda et al., 2013; Koran et al., 2014a). A final possibility is that genes interact with the presence of biomarkers to confer risk or resilience from longitudinal changes in brain volume or cognition. In one study, the *APOE* genotype in combination with biomarker positivity (high CSF tau or low CSF A $\beta$ -42) at baseline was associated with increased regional atrophy in MCI subjects; however, the authors reported that no biomarker  $\times$  *APOE* interaction reached statistical significance (Tosun et al., 2010). We previously identified an interaction between CSF levels of phosphorylated tau (ptau) and variation in the protection of telomeres 1 (*POT1*) gene that modified the association between ptau load and neurodegeneration (Hohman et al., 2014a). Yet, no study to date has systematically approached genetic modification of the relationship between CSF biomarkers of protein pathology and MRI biomarkers of disease progression.

The goal of this study was to identify genetic variants that modified the relationship between biomarker classification and neurodegeneration. We hypothesized we would identify a subset of individuals who were resilient to the neurodegenerative cascade associated with biomarker positivity based on genotypic variation across the sample. Moreover, we hypothesized that such variation would explain variance in brain atrophy above and beyond the effect of the *APOE* genotype. The identification of such genetic factors could clarify the mechanistic relationship between CSF biomarkers and neurodegeneration and provide targets for clinical intervention aimed at altering such pathways of neuro-vulnerability.

## MATERIALS AND METHODS

Data used in the preparation of this article were obtained from the Alzheimer's Disease Neuroimaging Initiative (ADNI) database (adni.loni.usc.edu). The ADNI was launched in 2003 by the National Institute on Aging (NIA), the National Institute of Biomedical Imaging and Bioengineering (NIBIB), the Food and Drug Administration (FDA), private pharmaceutical companies and non-profit organizations, as a \$60 million, 5-years public-private partnership. The primary goal of ADNI has been to test whether serial MRI, PET, other biological markers, and clinical and neuropsychological assessment can be combined to measure the progression of MCI and early AD. Determination of sensitive and specific markers of very early AD progression is intended to aid researchers and clinicians to develop new treatments and

monitor their effectiveness, as well as lessen the time and cost of clinical trials.

The Principal Investigator of this initiative is Michael W. Weiner, MD, VA Medical Center and University of California – San Francisco. ADNI is the result of efforts of many co-investigators from a broad range of academic institutions and private corporations, and subjects have been recruited from over 50 sites across the U.S. and Canada. The initial goal of ADNI was to recruit 800 subjects, but ADNI has been followed by ADNI-GO and ADNI-2. To date these three protocols have recruited over 1500 adults, ages 55–90, to participate in the research, consisting of cognitively normal older individuals, people with early or late MCI, and people with early AD. The follow up duration of each group is specified in the protocols for ADNI-1, ADNI-2 and ADNI-GO. Subjects originally recruited for ADNI-1 and ADNI-GO had the option to be followed in ADNI-2. For up-to-date information, see [www.adni-info.org](http://www.adni-info.org).

## SUBJECTS

Participants were enrolled based on criteria outlined in the ADNI protocol (<http://www.adni-info.org/scientists/ADNIStudyProcedures.aspx>). To avoid spurious genetic effects due to population stratification, only Caucasian participants were used in analyses. Demographic data are presented in **Table 1**. All analyses were performed in the combined dataset which includes participants in both the ADNI-1 and ADNI-2/GO protocols. ADNI and ADNI-2/GO were approved by the Institutional Review Boards of all of the participating institutions. Informed written consent was obtained from all participants at each site. All data analyzed herein were de-identified and all analyses were deemed exempt by the Vanderbilt IRB per 45 CFR 46.101(b).

## GENOTYPING

In ADNI-1, genotyping was performed using the Illumina Infinium Human-610-Quad BeadChip. In ADNI-2/GO, genotyping was performed on the Illumina OmniQuad array. Quality control (QC) and statistical analyses were performed using PLINK software (version 1.07; Purcell et al., 2007). During QC, we excluded Single Nucleotide Polymorphisms (SNPs) with a genotyping efficiency <90%, a minor allele frequency (MAF) < 5%, or deviation from Hardy-Weinberg Equilibrium ( $p < 1 \times 10^{-6}$ ). This left 515,383 SNPs in ADNI-1 and 605,317 SNPs in ADNI-2/GO. Finally, we merged the two genotyping files for our analyses and again applied a genotyping efficiency <90%. This left a total of 296,267 SNPs for data analysis.

## QUANTIFICATION OF VENTRICULAR DILATION

We used all FreeSurfer data from 1.5 Tesla scans across ADNI-1, ADNI-GO, and ADNI-2 in our analyses by merging the publicly available FreeSurfer data for the two cohorts. Cortical reconstruction and volumetric segmentation were performed with the FreeSurfer image analysis suite version 4.3 (<http://surfer.nmr.mgh.harvard.edu/>; Dale et al., 1999; Fischl et al., 1999a,b). FreeSurfer processing in ADNI has been described in detail elsewhere (Mormino et al., 2009). An early version of the longitudinal image processing framework was used to process the sequential scans (Reuter et al., 2012). We used the change in volume of

**Table 1 | Sample characteristics.**

		Baseline clinical diagnosis <sup>a</sup>		
		Normal control	Mild cognitive impairment	Alzheimer's disease
ADNI-1 dataset	Number of patients	102	176	92
	Number of APOE-ε4 carriers	23	97	63
	Number of females	48	59	39
	Mean baseline age (SD)	75.75 (4.99)	74.61 (7.59)	74.97 (7.93)
	Mean years of education (SD)	15.92 (2.71)	15.75 (3.01)	15.23 (3.20)
	Mean number of visits	5.09 (1.42)	5.16 (1.74)	3.33 (0.89)
	Mean interval in days	1320 (549)	1034 (544)	582 (252)
	Number tau positive (%)	22 (22)	80 (35)	62 (67)
Number amyloid positive (%)	40 (39)	131 (74)	85 (92)	
ADNI-2/GO dataset	Number of patients	92	206	22
	Number of APOE-ε4 carriers	21	89	14
	Number of females	45	92	9
	Mean baseline age (SD)	74.68 (5.68)	71.41 (7.30)	75.55 (10.53)
	Mean years of education (SD)	16.40 (2.55)	15.94 (2.69)	15.45 (2.82)
	Mean number of visits	3.55 (1.03)	3.94 (0.89)	3.41 (0.91)
	Mean interval in days	365 (152)	471 (203)	310 (146)
	Number tau positive (%)	22 (24)	72 (35)	17 (77)
Number amyloid positive (%)	25 (27)	93 (45)	20 (91)	
Combined dataset	Number of patients	194	382	114
	Number of APOE-ε4 carriers	44	186	77
	Number of females	93	151	48
	Mean baseline age (SD)	75.24 (5.34)	72.88 (7.60)	75.08 (8.44)
	Mean years of education (SD)	16.15 (2.64)	15.85 (2.84)	15.27 (3.12)
	Mean number of visits	4.36 (1.46)	4.50 (1.48)	3.34 (0.89)
	Mean interval in days	867 (630)	730 (487)	529 (258)
	Number tau positive (%)	44 (23)	152 (40)	79 (69)
Number amyloid positive (%)	65 (33)	224 (59)	105 (92)	

<sup>a</sup>Normal Control subjects had a Mini-Mental Status Examination (MMSE) score between 24 and 30, a Clinical Dementia Rating (CDR) score of 0, and were not depressed (Geriatric Depression Scale score < 6). Mild Cognitive Impairment subjects had a MMSE score between 24 and 30, objective memory impairment, subjective memory impairment, and a CDR score of 0.5. Alzheimer's Disease subjects met clinical criteria for dementia, had an MMSE of between 20 and 26, and had CDR score of 0.5 or 1.

the left inferior lateral ventricle as our primary outcome measurement and included a measurement of intracranial volume (ICV) as a covariate in all volumetric analyses; both of which were defined in FreeSurfer (Desikan et al., 2006). Slopes of change in left ventricular volume over time were calculated in SAS 9.3 (SAS Institute Inc., Cary, NC) using mixed model regression (PROC MIXED) to leverage the longitudinal data available. A conventional mixed model was used that included the fixed effect of time (fraction of years from baseline) and the intercept, as well as a random effect for time and the intercept. In such a model, the assumption is that individual slopes are normally distributed with the fixed effect of time representing the mean, and the variance represented in the random effect. On average we had four MRI scans for each subject. More details on the longitudinal data are presented in **Table 1**.

### BIOMARKER GROUPS

CSF biomarker quantification in ADNI was performed previously (Shaw et al., 2011), and detailed processing steps are available

elsewhere (Jagust et al., 2009). The present dataset was compiled across UPENN1—UPENN5 data sources available for download from the ADNI site. We made use of the first available measure of Aβ-42 and total tau for each subject. The first observation for all ADNI-2/GO subjects came from the UPENN5 dataset; while the first observation for all ADNI-1 subjects came from the UPENN1 dataset. Three subjects in ADNI-1 did not have a useable observation in the UPENN1 dataset, so we used the first observation available from the other UPENN datasets. Subjects were classified into four groups based on previously defined cut-off points (Jagust et al., 2009): amyloid positive ( $A\beta - 42 \leq 192$ ), tau positive ( $\tau \geq 93$ ), both amyloid and tau positive, or both amyloid and tau negative. We chose to use t-tau rather than p-tau in our biomarker groups because t-tau showed better sensitivity and specificity in the report establishing these cut points (Jagust et al., 2009). Of the 690 participants analyzed, 234 were amyloid and tau negative, 160 were amyloid positive, 41 were tau positive, and 255 were both amyloid and tau positive.

## STATISTICAL ANALYSES: BIOMARKER GROUPS IN RELATION TO BRAIN VOLUME

Statistical analysis was performed using SPSS v. 22 (<http://www-01.ibm.com/software/analytics/spss/>). General linear model (GLM) was used to test the relation between biomarker groups and left inferior lateral ventricle volume (LILV). Past work has demonstrated that, when measured longitudinally, the LILV shows greater dilation than the right, both in AD patients and in controls (Thompson et al., 2004). We have also successfully applied this variable as a quantitative outcome in previous genetic interaction analyses (Hohman et al., 2014a; Koran et al., 2014a). LILV slopes were set as the quantitative outcome and biomarker group status was dummy coded where biomarker negative was set as the reference category. Sex, diagnosis, age, education, ICV, and *APOE* genotype (coded as carriers vs. non-carriers of the  $\epsilon 4$  allele) were entered into the model as covariates.

## STATISTICAL ANALYSES: GENETIC INTERACTION WITH BIOMARKER GROUP

Genetic interaction analyses were performed using the—linear command in PLINK. A dominant model was used for gene coding (0—no minor allele present, 1—minor allele present). The dominant model was selected to reduce the risk of spurious associations due to low contingency table cell counts when evaluating the biomarker group  $\times$  SNP interaction. The same covariates were used for all genetic analyses; however, we excluded the *APOE* genotype at this stage in order to maximize our power to identify novel SNP effects. Biomarker groups were dummy coded with “biomarker negative” set as the reference category (LILV Slope =  $\beta_0 + \beta_1$  Baseline\_Age +  $\beta_2$  Baseline\_ICV +  $\beta_3$  Gender +  $\beta_4$  Education +  $\beta_5$  Dx +  $\beta_6$  Tau\_Positive +  $\beta_7$  Amyloid\_Positive +  $\beta_8$  Tau\_and\_Amyloid\_Positive +  $\beta_9$  SNP +  $\beta_{10}$  SNP\*Tau\_Positive +  $\beta_{11}$  SNP\*Amyloid\_Positive +  $\beta_{12}$  SNP\*Tau\_and\_Amyloid\_Positive).  $\beta_{10-12}$  were the terms of interest, and correction for multiple comparisons was performed for the total number of SNPs tested (296,109) using the Bonferroni procedure (cut-off  $p$ -value =  $1.86 \times 10^{-7}$ ). Next, the “Tau\_and\_Amyloid\_Positive” term as removed from the model so that we could investigate SNPs that modify the relationship between these pathologies irrespective of the presence of the other pathology. In this case the amyloid term was coded as positive or negative, and the tau term was coded as positive or negative. Again, correction for multiple comparisons was performed using the Bonferroni procedure. Finally, these same two models were evaluated for SNP  $\times$  biomarker interactions on baseline brain volume by setting baseline LILV as the quantitative outcome.

Although we do not have an independent replication sample with CSF data, MRI data, and genotype data, we chose to evaluate the consistency of our signal across datasets in order to provide some preliminary validation of our findings. The sample was divided into ADNI-1 and ADNI-2/GO based on the genotype chip used (Table 1), and significant interactions were re-evaluated within each cohort using the same covariates outlined above.

## POST-HOC ANALYSES: HIERARCHICAL LINEAR REGRESSION

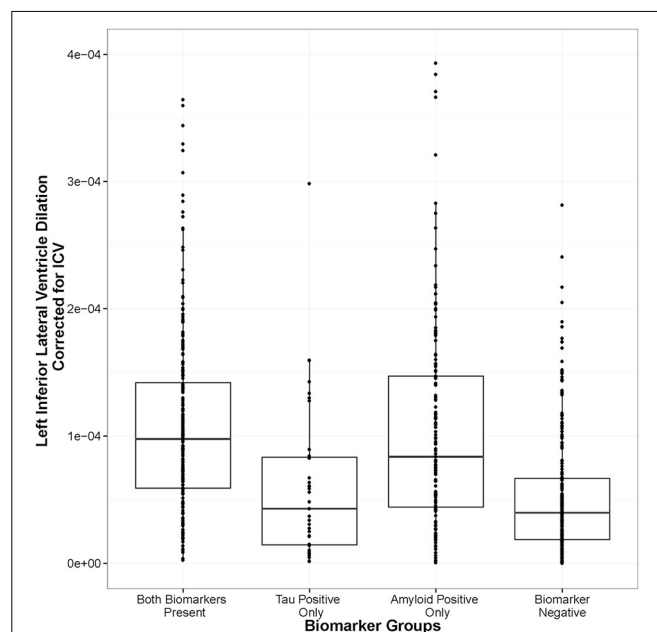
Following genetic interaction analyses, hierarchical linear regression was performed in SPSS 22 in order to calculate the amount

of variance explained by these novel genetic interactions above and beyond known predictors of brain volume and the *APOE* genotype. The first step in the model included sex, education, diagnosis, age, ICV, diagnosis, and biomarker group. Next, *APOE* genotype was inserted into the model. Third, the SNP term was inserted into the model. Finally, the SNP  $\times$  Biomarker group term was added into the model. Change in R square was calculated at each step of the regression model.

## RESULTS

### BIOMARKER GROUPS IN RELATION TO BRAIN VOLUME

As expected, biomarker group was associated with LILV slope when controlling for the covariates outlined above, [ $F_{(3, 679)} = 6.50, p = 0.0002$ ]. As shown in Figure 1, amyloid positivity alone ( $t = 4.144, p = 0.00003$ ) and combined amyloid/tau positivity ( $t = 2.83, p = 0.005$ ) were associated with more rapid ventricular dilation relative to biomarker negativity, while tau positivity alone was not associated with a faster ventricular dilation ( $t = -0.22, p = 0.825$ ). At baseline, biomarker group was also associated with LILV volume when controlling for the same variables [ $F_{(3, 681)} = 4.69, p = 0.003$ ]. However, only amyloid positivity alone significantly differed from the biomarker negative group when controlling for multiple comparisons ( $t = 3.46, p = 0.003$ ; Supplemental Figure 4). When modeling tau or amyloid positivity irrespective of the presence of the other biomarker (removing the “both” term from the model), only the amyloid term was associated with ventricular dilation ( $t = 4.38, p = 1 \times 10^{-5}$ ).



**FIGURE 1 | Amyloid positivity and combined biomarker positivity predict ventricular dilation.** Biomarker groups are along the x-axis and annual change in left inferior lateral ventricle volume is on the y axis. The groups differ in their mean annual change, [ $F_{(3, 679)} = 6.50, p = 0.0002$ ], with the amyloid positivity alone ( $t = 4.144, p = 0.00003$ ) and the combined amyloid/tau positivity ( $t = 2.83, p = 0.005$ ) groups showing significant deviation from the biomarker negative referent group.



## GENETIC INTERACTION ANALYSIS

When using the four group coding scheme (both positive, amyloid positive, tau positive, both negative), one SNP  $\times$  Amyloid interaction showed an association with baseline ventricular volume: the intergenic SNP rs6887649 (MAF = 5%); however, this effect was not consistent across the ADNI-1 and ADNI-2/GO datasets (Table 2). Minor allele carriers showed larger ventricles at baseline in the amyloid positive group (Supplemental Figure 1). Two SNP  $\times$  Amyloid interactions showed an association with longitudinal change in ventricular volume: the intergenic SNPs rs7849530 (MAF = 12%) and rs4866650 (MAF = 6%). Additional details of these results are presented in Table 2. These interactions remained statistically significant when correcting for MRI processing batch ( $p < 1.86 \times 10^{-7}$ ). In both cases the presence of the minor allele was associated with faster dilation of the ventricles in amyloid positive individuals (Figures 2, 3).

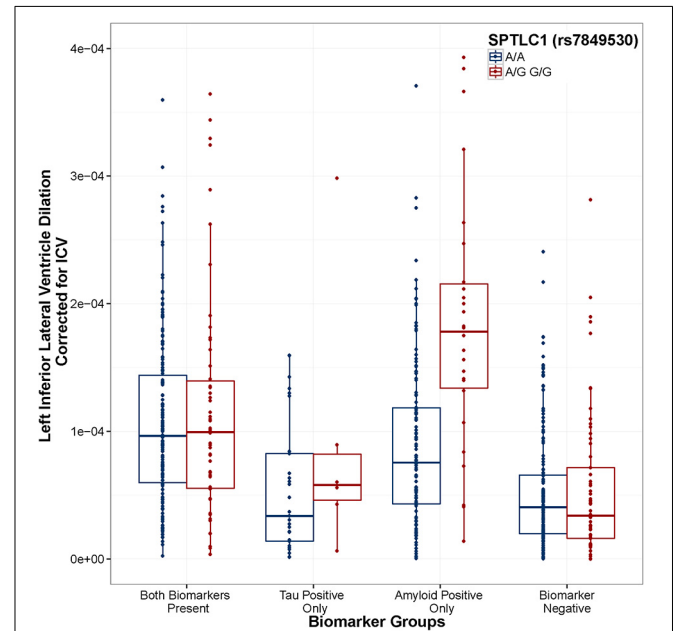
We also tested whether the peak observed interaction was clinically meaningful by testing whether it was associated with disease status as a binary outcome (rather than the quantitative outcome used in our original analyses). Indeed, the rs7849530  $\times$  amyloid interaction showed an association with disease status in a binary logistic regression with the same covariates used in the previous analyses ( $OR = 3.294, p = 0.046$ ) suggesting that this interaction is also associated with clinical status.

When using the second coding scheme (biomarker negative, tau positive, amyloid positive), no SNP  $\times$  biomarker interactions were associated with baseline ventricular volume, however one SNP  $\times$  Tau interaction showed an association with longitudinal change in ventricular volume: rs12261764 (MAF = 21%) annotated to *WDR11-AS1*. In this case, the minor allele was associated with slower dilation in tau positive individuals, and faster dilation in tau negative individuals (Figure 4), although only the difference in tau positive individuals showed consistency across the two ADNI subsets (Figure 5). This interaction also remained statistically significant when correcting for MRI processing batch ( $p < 1.86 \times 10^{-7}$ ).

## POST-HOC ANALYSIS: HIERARCHICAL LINEAR REGRESSION

Results are presented in Table 3. The first step in the hierarchical linear regression model explained 35.2% of the variance in LILV slope. In terms of the adjusted- $R^2$ , *APOE* genotype

explained an additional 0.2% of variance. Rs7849530 explained an additional 1.9% of the variance, and the rs7849530  $\times$  biomarker group interaction terms explained an additional 3.5% of the variance. Similarly, rs4866650 explained 1.4% of variance and the rs4866650  $\times$  biomarker group interaction terms explained an additional 3.2% of variance. When using the second coding

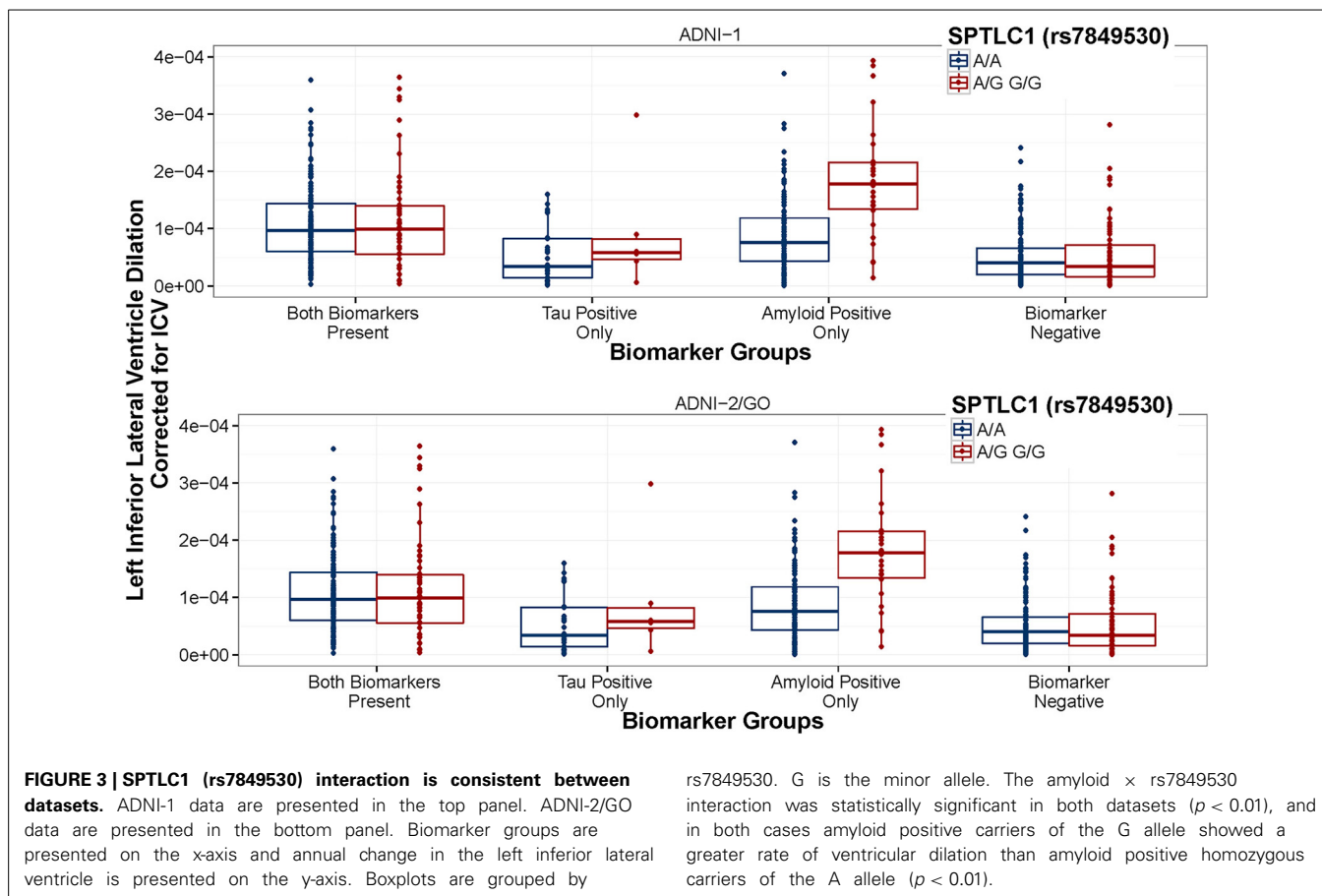


**FIGURE 2 | *SPTLC1* (rs7849530) modifies the association between amyloid positivity and ventricular dilation.** Biomarker groups are presented on the x-axis and annual change in the left inferior lateral ventricle is presented on the y-axis. Boxplots are grouped by rs7849530. G is the minor allele. When controlling for Age, Gender, Education, Diagnosis, and ICV, the amyloid\_positive  $\times$  rs7849530 interaction was statistically significant ( $t = 6.39, p = 3.14 \times 10^{-10}$ ). In the amyloid-only biomarker group, carriers of the G allele showed a greater rate of ventricular dilation than homozygous carriers of the A allele ( $t = 5.306, p < 0.001$ ). Model: LILV Slope =  $\beta_0 + \beta_1$ Baseline\_Age +  $\beta_2$ Baseline\_ICV +  $\beta_3$ Gender +  $\beta_4$ Education +  $\beta_5$ Dx +  $\beta_6$ Tau\_Positive +  $\beta_7$ Amyloid\_Positive +  $\beta_8$ Tau\_and\_Amyloid\_Positive +  $\beta_9$ SNP +  $\beta_{10}$ SNP\*Tau\_Positive +  $\beta_{11}$ SNP\*Tau\_and\_Amyloid\_Positive +  $\beta_{12}$ SNP\*Amyloid\_Positive.

**Table 2 | SNP interaction results.**

SNP	ADNI-1 dataset		ADNI2/GO dataset		Combined datasets	
	<i>t</i>	<i>p</i> -value	<i>t</i>	<i>p</i> -value	<i>t</i>	<i>p</i> -value
<b>AMYLOID INTERACTIONS ON INTERCEPT</b>						
rs6887649 ( <i>FTMT</i> )	4.95	$1.50 \times 10^{-6}$	-0.13	0.899	5.68	$1.99 \times 10^{-8}$ *
<b>AMYLOID INTERACTIONS ON SLOPE</b>						
rs7849530 ( <i>SPTLC1</i> )	4.52	$8.00 \times 10^{-6}$	2.64	0.009	6.40	$2.89 \times 10^{-10}$ *
rs4866650	3.89	0.0001	2.28	0.023	6.15	$1.35 \times 10^{-9}$ *
<b>TAU INTERACTIONS ON SLOPE</b>						
rs12261764 ( <i>WDR11-AS1</i> )	4.54	$8.00 \times 10^{-6}$	3.18	0.002	5.55	$9.5 \times 10^{-8}$ *

\*Significant when correcting for multiple comparisons (Bonferroni  $< 0.05$ ).



scheme (biomarker negative, tau positive, amyloid positive) the first step in linear regression model explained 35.7% of variance. *APOE* genotype explained 0.2% of variance. Rs12261764 explained less than 0.01% of variance alone, but the rs12261764  $\times$  biomarker interaction terms explained an additional 2.7% of variance.

## DISCUSSION

Consistent with previous reports (Fjell et al., 2010), we found that amyloid positivity was a strong predictor of longitudinal change in ventricular volume, while tau positivity alone was not. Moreover, we have identified four SNPs that modify the association between biomarker positivity and neurodegeneration. These results suggest that genetic variation may alter individual susceptibility to the damaging effects of AD neuropathology, although future studies are needed to replicate the observed genetic interactions.

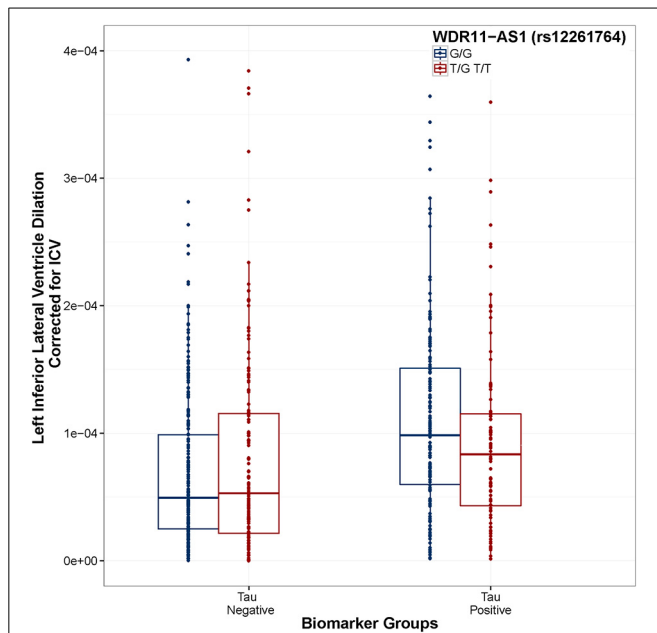
### BIOMARKER GROUPS AND LONGITUDINAL VENTRICULAR DILATION

We observed an association between biomarker group and left ventricular dilation in which amyloid positivity alone or in combination with tau positivity was associated with longitudinal brain atrophy. This finding is consistent with previous reports, particularly in the inferior lateral ventricles, in which stronger associations have been observed between amyloid positivity and ventricular volume (Olt et al., 2010) and ventricular dilation

(Fjell et al., 2010), while tau did not show this association. This observation is also consistent with the proposed cascade of AD biomarkers in which amyloid shows the earliest changes in biomarker levels, followed by tau (Jack et al., 2013). Thus, the observed association between the amyloid-only and the both biomarker group with brain volume change in an AD relevant region of interest is consistent with the expected AD cascade. The exact relation between CSF biomarkers and both cross-sectional and longitudinal brain volume appears to vary by brain region and is modified by genetic profile (Tosun et al., 2010). Thus, additional analyses targeting non-AD regions of interest, or performed at a voxel-wise level, may help further clarify the association between brain atrophy and biomarker status. Given the association also varies by diagnosis (Tosun et al., 2010), larger samples that allow stratification across diagnostic groups will be needed to fully evaluate potential genetic modifiers of this complex relationship. Regardless, the available data allowed us to pursue genetic modifiers of the association between biomarker status and brain volume and led to a few interesting interactions we will now discuss in detail.

### SNPs MODIFY THE ASSOCIATION BETWEEN AMYLOID POSITIVITY AND VENTRICULAR VOLUME

One SNP modified the association between amyloid positivity and ventricular volume at baseline (rs6887649). This intergenic SNP is 3 KB from a cluster of SNPs that have been associated



**FIGURE 4 | WDR11-AS1 (rs12261764) modifies the association between Tau positivity and ventricular dilation.** Biomarker groups are presented on the x-axis and annual change in the left inferior lateral ventricle is presented on the y-axis. Boxplots are grouped by rs12261764. G is the minor allele. When controlling for Age, Gender, Education, Diagnosis, and ICV, the tau\_positive  $\times$  rs12261764 interaction was statistically significant ( $t = 5.55$ ,  $p = 4.06 \times 10^{-8}$ ). In the tau positive biomarker group, homozygous carriers of the G allele showed a greater rate of ventricular dilation than carriers of the T allele ( $t = 2.18$ ,  $p = 0.030$ ). In the tau negative biomarker group, homozygous carriers of the G allele showed a slower rate of ventricular dilation than carriers of the T allele ( $t = 2.21$ ,  $p = 0.027$ ). Model: LILV Slope =  $\beta_0 + \beta_1$ Baseline\_Age +  $\beta_2$ Baseline\_ICV +  $\beta_3$  Gender +  $\beta_4$  Education +  $\beta_5$ Dx +  $\beta_6$ Tau\_Positive +  $\beta_7$ Amyloid\_Positive +  $\beta_8$ SNP +  $\beta_9$ SNP\*Amyloid\_Positive +  $\beta_{10}$ SNP\*Tau\_Positive.

with HDL-cholesterol levels in a recent GWAS (Kathiresan et al., 2007). This SNP is also 10 KB upstream of ferritin mitochondrial gene (*FTMT*). Interestingly, FtMt has been recently been implicated as a neuroprotective factor in neurodegenerative disease through regulation of iron homeostasis in the brain (Gao and Chang, 2014). Moreover, it has been specifically implicated in reducing oxidative damage and reducing  $\beta$ -amyloid-induced neurotoxicity (Wu et al., 2013). Our findings further implicate FtMt in AD pathogenesis, although a larger sample is needed to verify this effect, particularly given that the effect was not observed consistently between the ADNI-1 and ADNI-2/GO datasets.

Two SNPs were identified that modified the association between amyloid positivity and ventricular dilation (rs7849530 and rs4866650). In both cases these effects were consistent across the ADNI-1 and ADNI-2/GO cohorts, validating the association and suggesting the effect may indeed replicate in an independent sample. Interestingly, both of these SNPs are also within 50 kb of SNPs that have shown weak associations with AD previously (Li et al., 2008). Additionally, the rs7849530  $\times$  amyloid interaction showed an association with disease status in a binary logistic regression with the same covariates used in the previous model. As with brain volume, the minor allele at rs7849530 was

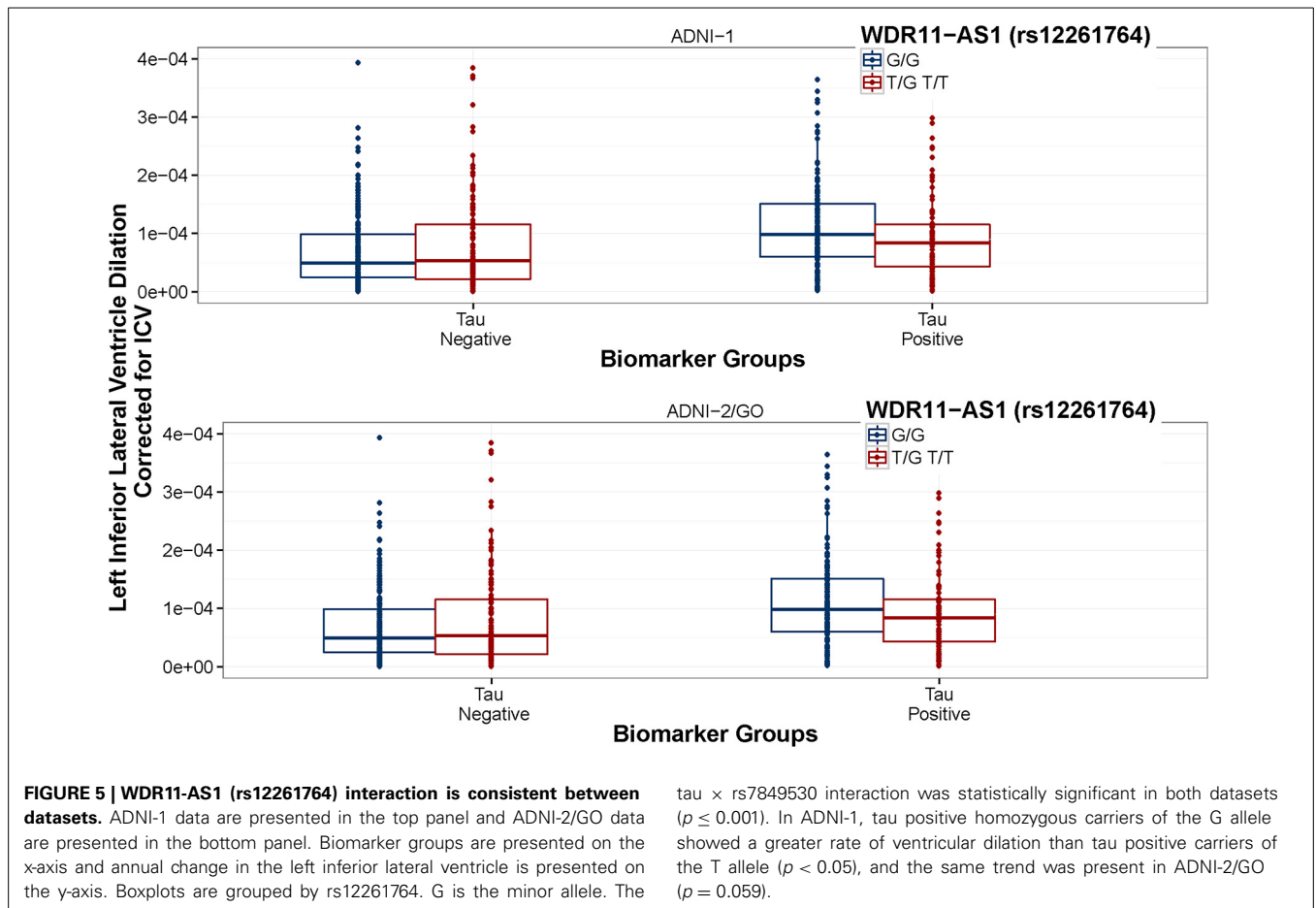
protective in non-amyloid positive individuals and conferred risk in amyloid positive individuals.

Rs7849530 is 50 kb upstream of serine palmitoyltransferase, long chain base subunit 1 (*SPTLC1*). Interestingly, ceramide levels, both in the brain and the blood, have been associated with risk for AD in a number of studies (Sato et al., 2005; Filippov et al., 2012; Mielke et al., 2012). Serine palmitoyltransferase is the rate limiting enzyme in ceramide synthesis, and *SPTLC1* has been specifically implicated in increased ceramide synthesis triggering apoptosis in Hereditary Sensory Neuropathy type 1 (HSN1) cells (Dawkins et al., 2001). Moreover, A $\beta$  induced membrane oxidative stress has been shown to cause ceramide accumulation to increase, ultimately resulting in apoptosis and neurodegeneration (Cutler et al., 2004). The present results suggest that genetic variation associated with ceramide synthesis may leave individuals vulnerable to neurodegeneration in the presence of amyloid, perhaps due to the previously identified relation between A $\beta$  induced oxidative stress and ceramide-induced apoptosis.

It is quite interesting that the higher rate of ventricular dilation in minor allele carriers of rs7849530 and rs4866650 is only observed in the group that is amyloid positive (only), but not in the group that is both amyloid and tau positive. In the current analyses we used baseline biomarker groups to predict future ventricular dilation, and past research has demonstrated that CSF biomarker changes in amyloid precede CSF biomarker changes in tau during the typical presentation of AD (Jack et al., 2013). Therefore, one possibility is that neural vulnerability due to ceramide levels may lead to an amyloid specific neurodegenerative process early in the disease process that is then compounded by a tau-specific neurodegenerative process later on. In such a scenario, a later starting point in an individual's disease course (when the participant has both tau and amyloid pathology) could be associated with an increased rate of decline relative to non-risk groups (as in Figure 2), but may at that stage be a more tau-based process that would not be as impacted by a genetic predisposition toward higher levels of ceramides. Additional work following the course of neurodegenerative processes in relation to the course of CSF biomarker changes will be necessary to better understand how individual variability in genetic risk modifies this complex association.

#### SNP MODIFICATION OF THE RELATION BETWEEN TAU AND NEURODEGENERATION

The primary SNP associated with neurodegeneration in individuals with tau pathology was rs12261764 annotated to WDR11 antisense RNA 1 (*WDR11-AS1*). In the hapmap sample, this SNP is in strong LD with rs122527599 ( $R^2 = 0.98$ ,  $D' = 1$ ), which has been shown to be an enhancer in fetal brain tissue (Ward and Kellis, 2012). WDR11 has been shown to interact with the transcription factor EMX1 leading to impaired development of olfactory neurons within individuals with Kallmann syndrome (Kim et al., 2010). There has been some indication of the presence of both tau and amyloid protein deposits in the olfactory bulb of individuals with AD (Mundiñano et al., 2011). It is unclear how such pathology might relate to the neurodegenerative cascade, or how the observed genetic interaction may modify such



**FIGURE 5 | WDR11-AS1 (rs12261764) interaction is consistent between datasets.** ADNI-1 data are presented in the top panel and ADNI-2/GO data are presented in the bottom panel. Biomarker groups are presented on the x-axis and annual change in the left inferior lateral ventricle is presented on the y-axis. Boxplots are grouped by rs12261764. G is the minor allele. The

tau × rs7849530 interaction was statistically significant in both datasets ( $p \leq 0.001$ ). In ADNI-1, tau positive homozygous carriers of the G allele showed a greater rate of ventricular dilatation than tau positive carriers of the T allele ( $p < 0.05$ ), and the same trend was present in ADNI-2/GO ( $p = 0.059$ ).

**Table 3 | Hierarchical linear regression results.**

Model	rs7849530			Change statistics						
	AIC	R <sup>2</sup>	Adj. R <sup>2</sup>	Adj. R <sup>2</sup> change	Adj. R <sup>2</sup> change 95% CI <sup>#</sup>	F change	df1	df2	Sig. F Change (P-value)	
1 <sup>a</sup>	8463	0.360	0.352	0.352	[0.30–0.39]	47.87	8	681	$3.29 \times 10^{-61}$	
2 <sup>b</sup>	8462	0.363	0.354	0.002	[–0.001–0.013]	2.83	1	680	0.092	
3 <sup>c</sup>	8442	0.382	0.373	0.019	[0.004–0.043]	21.83	1	679	$4.00 \times 10^{-6}$	
4 <sup>d</sup>	8444	0.384	0.373	0.000	[–0.001–0.005]	0.788	2	677	0.455	
<b>5<sup>e</sup></b>	<b>8406</b>	<b>0.419</b>	<b>0.408</b>	<b>0.035</b>	<b>[0.011–0.070]</b>	<b>40.798</b>	<b>1</b>	<b>676</b>	<b><math>3.14 \times 10^{-10}</math></b>	

<sup>a</sup> Predictors: Constant, Intracranial Volume, Age, Education, Diagnosis, Gender, Biomarker Group.

<sup>b</sup> Predictors: Constant, Intracranial Volume, Age, Education, Diagnosis, Gender, Biomarker Group, APOE.

<sup>c</sup> Predictors: Constant, Intracranial Volume, Age, Education, Diagnosis, Gender, Biomarker Group, APOE, rs7849530.

<sup>d</sup> Predictors: Constant, Intracranial Volume, Age, Education, Diagnosis, Gender, Biomarker Group, APOE, rs7849530, rs7849530 × Tau<sub>only</sub>, rs7849530 × Both.

<sup>e</sup> Predictors: Constant, Intracranial Volume, Age, Education, Diagnosis, Gender, Biomarker Group, eAPOE, rs7849530, rs7849530 × Tau<sub>only</sub>, rs7849530 × Both, rs7849530 × Amyloid<sub>only</sub>.

<sup>#</sup> Ninety five percentage confidence interval calculated using a bootstrap procedure with 1000 replicates.

an association, but it provides an interesting target for future functional analyses.

**STRENGTHS AND WEAKNESSES**

The present manuscript provides evidence of multiple novel SNP × biomarker interactions in conferring risk or resilience from

neurodegeneration. The joint analysis of the combined dataset allowed us to maximize our power (Skol et al., 2006), and the stratified *post-hoc* analyses provided support for the consistency of the observed effects across data sources. However, this manuscript is not without limitations. Although consistent effects were observed, a true replication sample from an external data



source with GWAS and PET data will be necessary to confirm our findings. We did observe differences in effect size between ADNI-1 and ADNI-2/GO, likely due to the difference in follow-up time. It is also possible that differences in CSF batches between ADNI-1 and ADNI-2/GO could be driving the differences in effect size between the two groups. In the current analysis, it is difficult to distinguish batch effects from group differences because we used the first CSF observation for each subject (thus the batches align roughly with ADNI-1 subjects vs. ADNI-2/GO subjects). However, it should be noted that previous work has demonstrated the test-retest reliability of the biomarker measures from CSF in the ADNI dataset (Shaw et al., 2011). The proposed mechanisms also assume a strong association between CSF biomarker levels and levels of neuropathology (Clark et al., 2003; Strozyk et al., 2003). Future analyses will build on this finding by evaluating the observed interactions in an autopsy sample where a more direct relationship between genotype, gene expression, and AD pathology can be assessed.

In the present analysis we did not have a large enough sample to meaningfully assess gene-biomarker interactions across diagnostic groups. Our observed effects appeared to show similar trends across the diagnostic categories (Supplemental Figures 2, 3); however given the known differences in the relationship between brain volume and CSF biomarkers across diagnostic categories, it would be worthwhile to pursue gene-biomarker-diagnosis interactions, if a larger sample could be acquired.

An additional independent sample with a comparable longitudinal follow-up interval to that of ADNI-1 could help clarify whether the cohort differences observed are simply due to differences in power, or rather such differences were due to batch effects, MRI follow-up interval, or sample characteristics. Moreover, future work replicating our findings in an independent sample with MRI, CSF, and genotype data is needed to confirm the observed effects. Finally, to avoid possible confounding factors related to population substructure we chose to restrict all analyses to Caucasian individuals, and thus our results may not generalize to other ancestral populations. We believe the statistical approach taken provides a blue-print for future gene-environment interaction analyses aimed at identifying genetic modifiers of known AD risk factors.

## AUTHOR CONTRIBUTIONS

Timothy J. Hohman was responsible for design, analysis, interpretation, and drafting the manuscript. Mary Ellen I. Koran was responsible for design, interpretation, and revision of the manuscript. Tricia A. Thornton-Wells was responsible for design, interpretation, and revision of the manuscript.

## ACKNOWLEDGMENTS

This research was supported in part by the Vanderbilt NIMH Neurogenomics Training grant (T32 MH65215), the Vanderbilt Medical Scientist Training Program (T32 GM07347), the Recruitment for Genetic Aging Research (P30 AG036445), and the Pharmaceutical Research and Manufacturers of America Foundation Fellowship in Translational Medicine and Therapeutics. The funders had no role in study design, data collection, and analysis, decision to publish, or preparation of

the manuscript. Data collection and sharing for this project was funded by the ADNI (National Institutes of Health Grant U01 AG024904) and DOD ADNI (Department of Defense award number W81XWH-12-2-0012). ADNI is funded by the National Institute on Aging, the NIBIB, and through generous contributions from the following: Alzheimer's Association; Alzheimer's Drug Discovery Foundation; BioClinica, Inc.; Biogen Idec Inc.; Bristol-Myers Squibb Company; Eisai Inc.; Elan Pharmaceuticals, Inc.; Eli Lilly and Company; F. Hoffmann-La Roche Ltd and its affiliated company Genentech, Inc.; GE Healthcare; Innogenetics, N.V.; IXICO Ltd.; Janssen Alzheimer Immunotherapy Research & Development, LLC.; Johnson & Johnson Pharmaceutical Research & Development LLC.; Medpace, Inc.; Merck & Co., Inc.; Meso Scale Diagnostics, LLC.; NeuroRx Research; Novartis Pharmaceuticals Corporation; Pfizer Inc.; Piramal Imaging; Servier; Synarc Inc.; and Takeda Pharmaceutical Company. The Canadian Institutes of Health Research is providing funds to support ADNI clinical sites in Canada. Private sector contributions are facilitated by the Foundation for the National Institutes of Health ([www.fnih.org](http://www.fnih.org)). The grantee organization is the Northern California Institute for Research and Education, and the study is coordinated by the Alzheimer's Disease Cooperative Study at the University of California, San Diego. ADNI data are disseminated by the Laboratory for Neuro Imaging at the University of Southern California.

## SUPPLEMENTARY MATERIAL

The Supplementary Material for this article can be found online at: <http://www.frontiersin.org/journal/10.3389/fnagi.2014.00183/abstract>

## REFERENCES

- Clark, C., Xie, S., Chittams, J., Ewbank, D., Peskind, E., Galasko, D., et al. (2003). Cerebrospinal fluid tau and beta-amyloid: how well do these biomarkers reflect autopsy-confirmed dementia diagnoses? *Arch. Neurol.* 60, 1696–1702. doi: 10.1001/archneur.60.12.1696
- Cutler, R. G., Kelly, J., Storie, K., Pedersen, W. A., Tammara, A., Hatanpaa, K., et al. (2004). Involvement of oxidative stress-induced abnormalities in ceramide and cholesterol metabolism in brain aging and Alzheimer's disease. *Proc. Natl. Acad. Sci. U.S.A.* 101, 2070–2075. doi: 10.1073/pnas.0305799101
- Dale, A. M., Fischl, B., and Sereno, M. I. (1999). Cortical surface-based analysis: I. segmentation and surface reconstruction. *Neuroimage* 9, 179–194. doi: 10.1006/nimg.1998.0395
- Davatzikos, C., Bhatt, P., Shaw, L. M., Batmanghelich, K. N., and Trojanowski, J. Q. (2011). Prediction of MCI to AD conversion, via MRI, CSF biomarkers, and pattern classification. *Neurobiol. Aging* 32, e19–e27. doi: 10.1016/j.neurobiolaging.2010.05.023
- Dawkins, J. L., Hulme, D. J., Brahmabhatt, S. B., Auer-Grumbach, M., and Nicholson, G. A. (2001). Mutations in SPTLC1, encoding serine palmitoyltransferase, long chain base subunit-1, cause hereditary sensory neuropathy type I. *Nat. Genet.* 27, 309–312. doi: 10.1038/85879
- Desikan, R. S., Segonne, F., Fischl, B., Quinn, B. T., Dickerson, B. C., Blacker, D., et al. (2006). An automated labeling system for subdividing the human cerebral cortex on MRI scans into gyral based regions of interest. *Neuroimage* 31, 968–980. doi: 10.1016/j.neuroimage.2006.01.021
- Fagan, A. M., Head, D., Shah, A. R., Marcus, D., Mintun, M., Morris, J. C., et al. (2009). Decreased cerebrospinal fluid A $\beta$ 42 correlates with brain atrophy in cognitively normal elderly. *Ann. Neurol.* 65, 176–183. doi: 10.1002/ana.21559
- Filippov, V., Song, M. A., Zhang, K., Vinters, H. V., Tung, S., Kirsch, W. M., et al. (2012). Increased ceramide in brains with Alzheimer's and other neurodegenerative diseases. *J. Alzheimers Dis.* 29, 537–547. doi: 10.3233/JAD-2011-111202

- Fischl, B., Sereno, M. I., and Dale, A. M. (1999a). Cortical surface-based analysis: II: inflation, flattening, and a surface-based coordinate system. *Neuroimage* 9, 195–207. doi: 10.1006/nimg.1998.0396
- Fischl, B., Sereno, M. I., Tootell, R. B., and Dale, A. M. (1999b). High-resolution intersubject averaging and a coordinate system for the cortical surface. *Hum. Brain Mapp.* 8, 272–284.
- Fjell, A. M., Walhovd, K. B., Fennema-Notestine, C., McEvoy, L. K., Hagler, D. J., Holland, D., et al. (2010). Brain atrophy in healthy aging is related to CSF levels of Abeta1-42. *Cereb. Cortex* 20, 2069–2079. doi: 10.1093/cercor/bhp279
- Gao, G., and Chang, Y. (2014). Mitochondrial ferritin in the regulation of brain iron homeostasis and neurodegenerative diseases. *Front. Pharmacol.* 5:19. doi: 10.3389/fphar.2014.00019
- Hohman, T. J., Koran, M. I., and Thornton-Wells, T. A. (2014b). Interactions between *GSK3B* and amyloid genes explain variance in amyloid burden. *Neurobiol. Aging* 35, 460–465. doi: 10.1016/j.neurobiolaging.2013.08.032
- Hohman, T. J., Koran, M. I., and Thornton-Wells, T. A. (2013). Epistatic effects among Alzheimer's candidate genes. *PLoS ONE* 8:e80839. doi: 10.1371/journal.pone.0080839
- Hohman, T. J., Koran, M. I., and Thornton-Wells, T. A. (2014a). Genetic modification of the relationship between phosphorylated tau and neurodegeneration. *Alzheimers Dement.* doi: 10.1016/j.jalz.2013.12.022. [Epub ahead of print].
- Jack, C. R. Jr., Knopman, D. S., Jagust, W. J., Petersen, R. C., Weiner, M. W., Aisen, P. S., et al. (2013). Tracking pathophysiological processes in Alzheimer's disease: an updated hypothetical model of dynamic biomarkers. *Lancet Neurol.* 12, 207–216. doi: 10.1016/S1474-4422(12)70291-0
- Jack, C. R. Jr., Knopman, D. S., Jagust, W. J., Shaw, L. M., Aisen, P. S., Weiner, M. W., et al. (2010). Hypothetical model of dynamic biomarkers of the Alzheimer's pathological cascade. *Lancet Neurol.* 9, 119. doi: 10.1016/S1474-4422(09)70299-6
- Jagust, W. J., Landau, S. M., Shaw, L. M., Trojanowski, J. Q., Koeppe, R. A., Reiman, E. M., et al. (2009). Relationships between biomarkers in aging and dementia. *Neurology* 73, 1193–1199. doi: 10.1212/WNL.0b013e3181bc010c
- Kathiresan, S., Manning, A., Demissie, S., D'Agostino, R., Surti, A., Guiducci, C., et al. (2007). A genome-wide association study for blood lipid phenotypes in the Framingham Heart Study. *BMC Med. Genet.* 1:S17. doi: 10.1186/1471-2350-8-S1-S17
- Kim, H. G., Ahn, J. W., Kurth, I., Ullmann, R., Kim, H. T., Kulharya, A., et al. (2010). WDR11, a WD protein that interacts with transcription factor EMX1, is mutated in idiopathic hypogonadotropic hypogonadism and Kallmann syndrome. *Am. J. Hum. Genet.* 87, 465–479. doi: 10.1016/j.ajhg.2010.08.018
- Kim, S., Swaminathan, S., Shen, L., Risacher, S. L., Nho, K., Foroud, T., et al. (2011). Genome-wide association study of CSF biomarkers Abeta-42, t-tau, and p-tau181p in the ADNI cohort. *Neurology* 76, 69–79. doi: 10.1212/WNL.0b013e318204a397
- Koran, M. I., Hohman, T. J., Meda, S. A., and Thornton-Wells, T. (2014a). Genetic interactions within inositol-related pathways are associated with longitudinal changes in ventricle size. *J. Alzheimers Dis.* 38, 145–154. doi: 10.3233/JAD-130989
- Koran, M. I., Hohman, T. J., and Thornton-Wells, T. A. (2014b). Genetic interactions found between calcium channel genes modulate amyloid load measured by positron emission tomography. *Hum. Genet.* 133, 85–93. doi: 10.1007/s00439-013-1354-8
- Li, H., Wetten, S., Li, L., St. Jean, P. L., Upmanyu, R., Surh, L., et al. (2008). Candidate single-nucleotide polymorphisms from a genomewide association study of Alzheimer disease. *Arch. Neurol.* 65, 45. doi: 10.1001/archneurol.2007.3
- Meda, S. A., Koran, M. E., Pryweller, J. R., Vega, J. N., and Thornton-Wells, T. A. (2013). Genetic interactions associated with 12-month atrophy in hippocampus and entorhinal cortex in Alzheimer's disease neuroimaging initiative. *Neurobiol. Aging* 34, e9–e18. doi: 10.1016/j.neurobiolaging.2012.09.020
- Mielke, M. M., Bandaru, V. V. R., Haughey, N. J., Xia, J., Fried, L. P., Yasar, S., et al. (2012). Serum ceramides increase the risk of Alzheimer disease the women's health and aging study II. *Neurology* 79, 633–641. doi: 10.1212/WNL.0b013e318264e380
- Mormino, E. C., Kluth, J. T., Madison, C. M., Rabinovici, G. D., Baker, S. L., Miller, B. L., et al. (2009). Episodic memory loss is related to hippocampal-mediated beta-amyloid deposition in elderly subjects. *Brain* 132, 1310–1323. doi: 10.1093/brain/awn320
- Morris, J. C., Roe, C. M., Xiong, C., Fagan, A. M., Goate, A. M., Holtzman, D. M., et al. (2010). APOE predicts amyloid-beta but not tau Alzheimer pathology in cognitively normal aging. *Ann. Neurol.* 67, 122–131. doi: 10.1002/ana.21843
- Mundiñano, I. C., Caballero, M. C., Ordóñez, C., Hernandez, M., DiCaulo, C., Marcilla, I., et al. (2011). Increased dopaminergic cells and protein aggregates in the olfactory bulb of patients with neurodegenerative disorders. *Acta Neuropathol.* 122, 61–74. doi: 10.1007/s00401-011-0830-2
- Olt, B., Cohen, R., Gongvatana, A., Okonkwo, O., Johanson, C., Stopa, E., et al. (2010). Brain ventricular volume and cerebrospinal fluid biomarkers of Alzheimer's disease. *J. Alzheimers Dis.* 20, 647–657. doi: 10.3233/JAD-2010-1406
- Purcell, S., Neale, B., Todd-Brown, K., Thomas, L., Ferreira, M. A. R., Bender, D., et al. (2007). PLINK: a tool set for whole-genome association and population-based linkage analyses. *Am. J. Hum. Genet.* 81, 559–575. doi: 10.1086/519795
- Reuter, M., Schmansky, N. J., Rosas, H. D., and Fischl, B. (2012). Within-subject template estimation for unbiased longitudinal image analysis. *Neuroimage.* 61, 1402–1418. doi: 10.1016/j.neuroimage.2012.02.084
- Satoi, H., Tomimoto, H., Ohtani, R., Kitano, T., Kondo, T., Watanabe, M., et al. (2005). Astroglial expression of ceramide in Alzheimer's disease brains: a role during neuronal apoptosis. *Neuroscience* 130, 657–666. doi: 10.1016/j.neuroscience.2004.08.056
- Schoonenboom, N. S., van der Flier, W. M., Blankenstein, M. A., Bouwman, F. H., Van Kamp, G. J., Barkhof, F., et al. (2008). CSF and MRI markers independently contribute to the diagnosis of Alzheimer's disease. *Neurobiol. Aging* 29, 669–675. doi: 10.1016/j.neurobiolaging.2006.11.018
- Schott, J. M., Bartlett, J. W., Fox, N. C., and Barnes, J. (2010). Increased brain atrophy rates in cognitively normal older adults with low cerebrospinal fluid Abeta42. *Ann. Neurol.* 68, 825–834. doi: 10.1002/ana.22315
- Shaw, L. M., Vanderstichele, H., Knopik-Czajka, M., Figurski, M., Coart, E., Blennow, K., et al. (2011). Qualification of the analytical and clinical performance of CSF biomarker analyses in ADNI. *Acta Neuropathol.* 121, 597–609. doi: 10.1007/s00401-011-0808-0
- Skol, A., Scott, L., Abecasis, G., and Boehnke, M. (2006). Joint analysis is more efficient than replication-based analysis for two-stage genome-wide association studies. *Nat. Genet.* 38, 209–213. doi: 10.1038/ng1706
- Sluimer, J. D., Bouwman, F. H., Vrenken, H., Blankenstein, M. A., Barkhof, F., van der Flier, W. M., et al. (2010). Whole-brain atrophy rate and CSF biomarker levels in MCI and AD: a longitudinal study. *Neurobiol. Aging* 31, 758–764. doi: 10.1016/j.neurobiolaging.2008.06.016
- Small, S. A., and Duff, K. (2008). Linking Abeta and tau in late-onset Alzheimer's disease: a dual pathway hypothesis. *Neuron* 60, 534–542. doi: 10.1016/j.neuron.2008.11.007
- Strozyk, D., Blennow, K., White, L., and Launer, L. (2003). CSF Abeta 42 levels correlate with amyloid-neuropathology in a population-based autopsy study. *Neurology* 60, 656–656. doi: 10.1212/01.WNL.0000046581.81650.D0
- Thompson, P. M., Hayashi, K. M., de Zubicaray, G. I., Janke, A. L., Rose, S. E., Semple, J., et al. (2004). Mapping hippocampal and ventricular change in Alzheimer disease. *Neuroimage* 22, 1754–1766. doi: 10.1016/j.neuroimage.2004.03.040
- Tosun, D., Schuff, N., Truran-Sacrey, D., Shaw, L. M., Trojanowski, J. Q., Aisen, P., et al. (2010). Relations between brain tissue loss, CSF biomarkers and the ApoE genetic profile: a longitudinal MRI study. *Neurobiol. Aging* 31, 1340. doi: 10.1016/j.neurobiolaging.2010.04.030
- Vemuri, P., Wiste, H. J., Weigand, S. D., Shaw, L. M., Trojanowski, J. Q., Weiner, M. W., et al. (2009a). MRI and CSF biomarkers in normal, MCI, and AD subjects diagnostic discrimination and cognitive correlations. *Neurology* 73, 287–293. doi: 10.1212/WNL.0b013e3181af79e5
- Vemuri, P., Wiste, H. J., Weigand, S. D., Shaw, L. M., Trojanowski, J. Q., Weiner, M. W., et al. (2009b). MRI and CSF biomarkers in normal, MCI, and AD subjects predicting future clinical change. *Neurology* 73, 294–301. doi: 10.1212/WNL.0b013e3181af79fb
- Ward, L. D., and Kellis, M. (2012). HaploReg: a resource for exploring chromatin states, conservation, and regulatory motif alterations within sets of genetically linked variants. *Nucleic Acids Res.* 40, D930–D934. doi: 10.1093/nar/gkr917

Wu, W., Zhao, Y., Shi, Z., Chang, S., Nie, G., Duan, X., et al. (2013). Mitochondrial ferritin attenuates  $\beta$ -amyloid-induced neurotoxicity: reduction in oxidative damage through the Erk/P38 mitogen-activated protein kinase pathways. *Antioxid. Redox Signl.* 18, 158–169. doi: 10.1089/ars.2011.4285

**Conflict of Interest Statement:** The authors declare that the research was conducted in the absence of any commercial or financial relationships that could be construed as a potential conflict of interest.

Received: 25 March 2014; accepted: 08 July 2014; published online: 04 August 2014.

*Citation:* Hohman TJ, Koran MEI and Thornton-Wells TA (2014) Genetic variation modifies risk for neurodegeneration based on biomarker status. *Front. Aging Neurosci.* 6:183. doi: 10.3389/fnagi.2014.00183

This article was submitted to the journal *Frontiers in Aging Neuroscience*.

Copyright © 2014 Hohman, Koran and Thornton-Wells. This is an open-access article distributed under the terms of the Creative Commons Attribution License (CC BY). The use, distribution or reproduction in other forums is permitted, provided the original author(s) or licensor are credited and that the original publication in this journal is cited, in accordance with accepted academic practice. No use, distribution or reproduction is permitted which does not comply with these terms.