

IMAGE OF THE ISSUE

Accessory right hepatic duct in which a cystic duct drainsDaniel V. Kostov¹ & Georgi L. Kobakov²

¹Department of Surgery, Naval Hospital of Varna, and ²Division of Surgery, Marko Markov Interregional Dispensary and Hospital of Oncological Diseases of Varna, Varna, Bulgaria

Correspondence

Daniel V. Kostov, Naval Hospital of Varna, Department of Surgery, 3 Hristo Smirnenski Street, BG-9010 Varna, Bulgaria. Tel: +359 888 954 829; Fax: +359 52 302650; E-mail: danielkostov@abv.bg

There exist numerous anatomic bile duct variations^{1,2} and an aberrant right hepatic duct which drains the right hepatic lobe directly into the extrahepatic biliary tree occurs in 3.2–18.0% of patients.³ The rare anatomical variation of an accessory right hepatic duct into which a cystic duct drains (Fig. 1) was encountered during surgery for obstructive jaundice as a result of an echinococcal cyst. Detailed knowledge of such a variation is of importance in liver resection and transplantation. Furthermore, such an accessory duct may be liable to inadvertent transection or ligation during cholecystectomy.

References

1. Ohkubo M, Nagino M, Kamiya J, Yuasa N, Oda K, Arai T *et al.* (2004) Surgical anatomy of the bile ducts at the hepatic hilum as applied to living donor liver transplantation. *Ann Surg* 239:82–86.
2. Strasberg SM, Helton WS. (2011) An analytical review of vasculobiliary injury in laparoscopic and open cholecystectomy. *HPB* 13:1–14.
3. Catalano O, Singh A, Uppot R, Hahn P, Ferrone C, Sahani D. (2008) Vascular and biliary variants in the liver: implications for liver surgery. *Radiographics* 28:359–378.

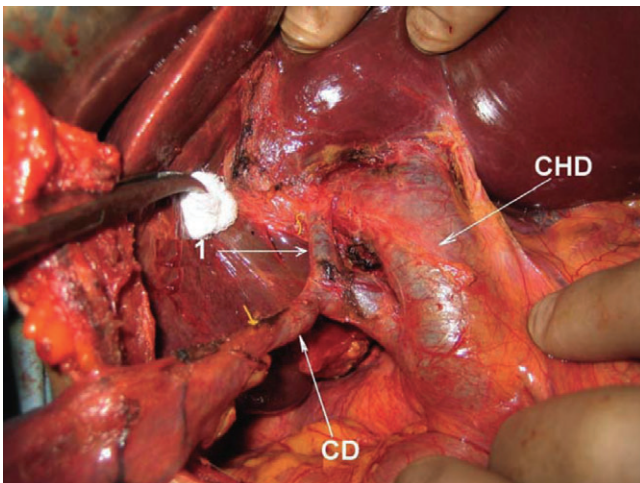


Figure 1 Accessory right hepatic duct¹ into which the cystic duct drains. The accessory right hepatic duct drains extrahepatically into the common bile duct. CHD, common hepatic duct; CD, cystic duct