

# Loss of Insulin Signaling in Vascular Endothelial Cells Accelerates Atherosclerosis in Apolipoprotein E Null Mice

Christian Rask-Madsen,<sup>1</sup> Qian Li,<sup>1</sup> Bryn Freund,<sup>3</sup> Danielle Feather,<sup>3</sup> Roman Abramov,<sup>1</sup> I-Hsien Wu,<sup>1</sup> Kai Chen,<sup>1</sup> Junko Yamamoto-Hiraoka,<sup>1</sup> Jan Goldenbogen,<sup>1</sup> Konstantinos B. Sotiropoulos,<sup>1</sup> Allen Clermont,<sup>1</sup> Pedro Geraldes,<sup>1</sup> Claudia Dall'Osso,<sup>1</sup> Amy J. Wagers,<sup>1</sup> Paul L. Huang,<sup>2</sup> Mark Reikter,<sup>4</sup> Rosario Scalia,<sup>3</sup> C. Ronald Kahn,<sup>1</sup> and George L. King<sup>1,\*</sup>

<sup>1</sup>Research Division, Joslin Diabetes Center, Boston, MA 02215, USA

<sup>2</sup>Cardiovascular Research Center and Cardiology Division, Massachusetts General Hospital, Boston, MA 02129, USA

<sup>3</sup>Department of Physiology, Cardiovascular Research Center, Temple University School of Medicine, Philadelphia, PA 19140, USA

<sup>4</sup>Atherosclerosis and Metabolic Syndrome Department, Lilly Research Laboratories, Indianapolis, IN 46285, USA

\*Correspondence: [george.king@joslin.harvard.edu](mailto:george.king@joslin.harvard.edu)

DOI 10.1016/j.cmet.2010.03.013

## SUMMARY

To determine whether insulin action on endothelial cells promotes or protects against atherosclerosis, we generated apolipoprotein E null mice in which the insulin receptor gene was intact or conditionally deleted in vascular endothelial cells. Insulin sensitivity, glucose tolerance, plasma lipids, and blood pressure were not different between the two groups, but atherosclerotic lesion size was more than 2-fold higher in mice lacking endothelial insulin signaling. Endothelium-dependent vasodilation was impaired and endothelial cell VCAM-1 expression was increased in these animals. Adhesion of mononuclear cells to endothelium *in vivo* was increased 4-fold compared with controls but reduced to below control values by a VCAM-1-blocking antibody. These results provide definitive evidence that loss of insulin signaling in endothelium, in the absence of competing systemic risk factors, accelerates atherosclerosis. Therefore, improving insulin sensitivity in the endothelium of patients with insulin resistance or type 2 diabetes may prevent cardiovascular complications.

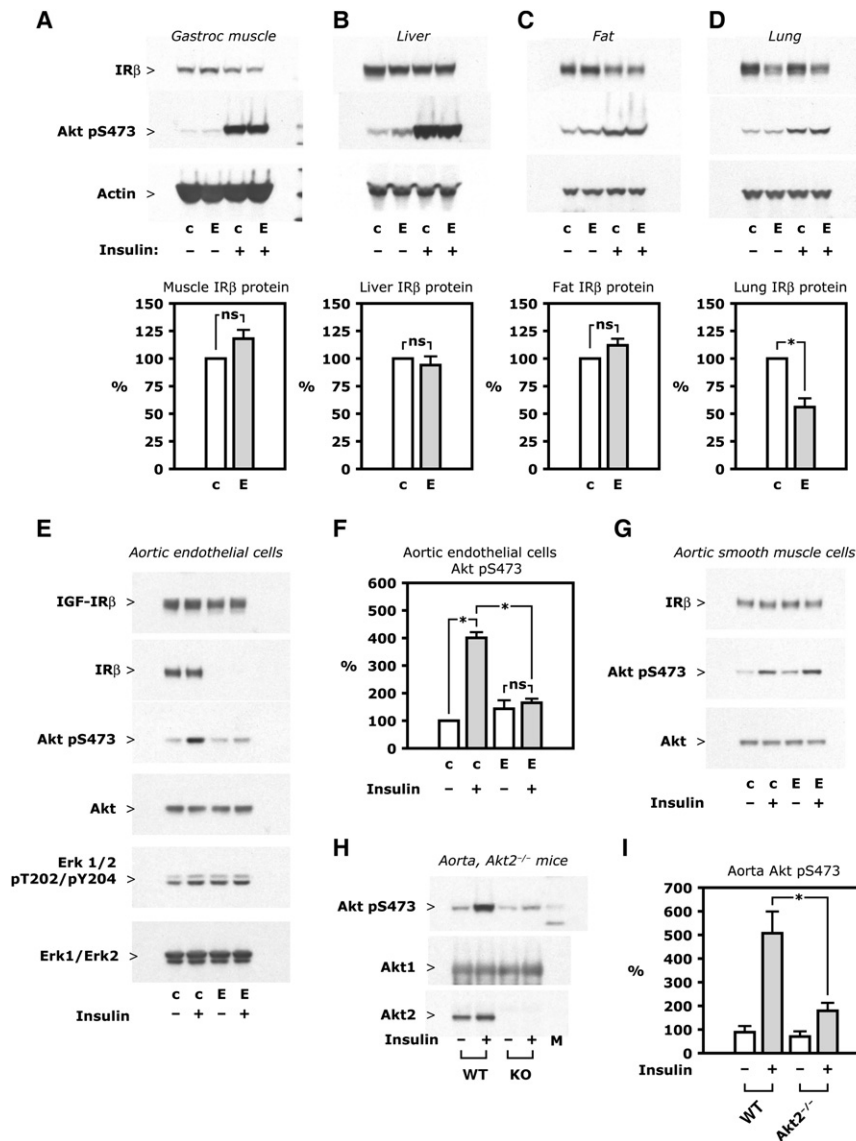
## INTRODUCTION

Insulin stimulates signal transduction in endothelial cells (Zeng and Quon, 1996) and augments endothelial vasodilator function (Steinberg et al., 1994). Multiple studies have shown that systemic insulin resistance is associated with impaired vascular insulin signaling (Jiang et al., 1999) and blunted vascular effects of insulin (Steinberg et al., 1996). Insulin resistance (Howard et al., 1996) and the resultant hyperinsulinemia (Despres et al., 1996) are independent risk factors for vascular disease. These associations could be due to excessive insulin action on endothelial cells during hyperinsulinemia or decreased endothelial insulin action due to vascular insulin resistance, but the relative roles of such effects have been controversial (Rask-Madsen and King, 2007).

Both antiatherosclerotic and proatherosclerotic mechanisms activated by insulin have been described in vascular endothelial cells. Antiatherogenic actions of insulin include increased production of nitric oxide (NO) (Kuboki et al., 2000; Steinberg et al., 1994; Zeng and Quon, 1996), decreased endothelial cell apoptosis (Hermann et al., 2000), decreased production of reactive oxygen species (Du et al., 2006), and increased expression of genes with antioxidant effects, like heme oxygenase-1 (HO-1) (Geraldes et al., 2008). Conversely, increased expression of endothelin-1 (Cardillo et al., 1999; Oliver et al., 1991) and plasminogen activator inhibitor-1 (PAI-1) (Grenett et al., 1998; Nordt et al., 1998) are among proatherogenic actions of insulin on vascular endothelial cells. There have been reports of both increased (Madonna et al., 2004; Okouchi et al., 2002) and decreased (Aljada et al., 2000; Booth et al., 2001) expression of adhesion molecules after insulin stimulation.

Despite mechanistic information about presumed anti- or proatherosclerotic effects of insulin signaling in endothelial cells, the net effect of endothelial insulin action on the development of atherosclerosis is unknown. In order to improve management of the cardiovascular risk profile particular to patients with insulin resistance or diabetes (Reusch and Draznin, 2007), it is critical to understand the effects of insulin directly on endothelial cells and the consequences of insulin resistance in endothelium. Thus, if hyperinsulinemia is detrimental, intensive insulin treatment could potentially have adverse effects in the vascular endothelium, thereby blunting the effects of improved control of glucose and lipid metabolism. Conversely, if the direct action of insulin on the endothelium has an antiatherosclerotic effect, therapies that prevent or improve insulin resistance in endothelial cells could decrease the risk of atherosclerosis. These local effects may be different from the results of targeting insulin resistance at the whole-body level. For example, we have previously shown that treatment with an inhibitor specific for the  $\beta$ -isoform of protein kinase C normalized the severely compromised insulin-stimulated NO production in the aorta of insulin resistant rats but had no effect on whole-body insulin sensitivity (Naruse et al., 2006).

To determine whether the loss of insulin action on endothelial cells, similar to what is observed in patients with insulin resistance (Rask-Madsen et al., 2001; Steinberg et al., 1996), promotes or retards atherosclerosis, we generated endothelial



**Figure 1. Insulin Receptor Expression and Insulin Signaling**

(A–D) Insulin 5 mU/g i.v. was given to mice fasted overnight and tissues collected after 5 min. Representative western blots (top) show IR $\beta$  protein expression and insulin-stimulated Akt Ser473 phosphorylation in lysate of the tissues indicated; also shown are mean values of IR $\beta$  protein after densitometry of western blots from three independent experiments (bottom).

(E and F) Aorta was digested by collagenase, and endothelial cells were isolated by immunoselection with magnetic microbeads complexed with ICAM2 antibody, with aortic smooth muscle cells grown from the ICAM2-negative fraction. Cultures were treated with insulin (10 nM, 5 min) after 24 hr of serum starvation. (E) Representative western blots from whole-cell lysate of primary culture of aortic endothelial cells are shown. (F) Mean values of Akt Ser473 phosphorylation were based on densitometry of western blots from three independent experiments.

(G) Western blots from whole-cell lysate of aortic smooth muscle cells representative of three independent experiments.

(H and I) Insulin 10 mU/g was given i.v. in wild-type and Akt2<sup>-/-</sup> mice. After 5 min, the aorta was isolated and snap frozen. (H) Representative western blots of aorta lysate. (I) Mean values of Akt Ser473 phosphorylation based on data from 10 wild-type and 13 Akt2<sup>-/-</sup> mice. See also Figure S1. Abbreviations: c, control mice; E, EIRAKO mice; WT, wild-type mice.

In graphs, error bars represent standard error of the mean.

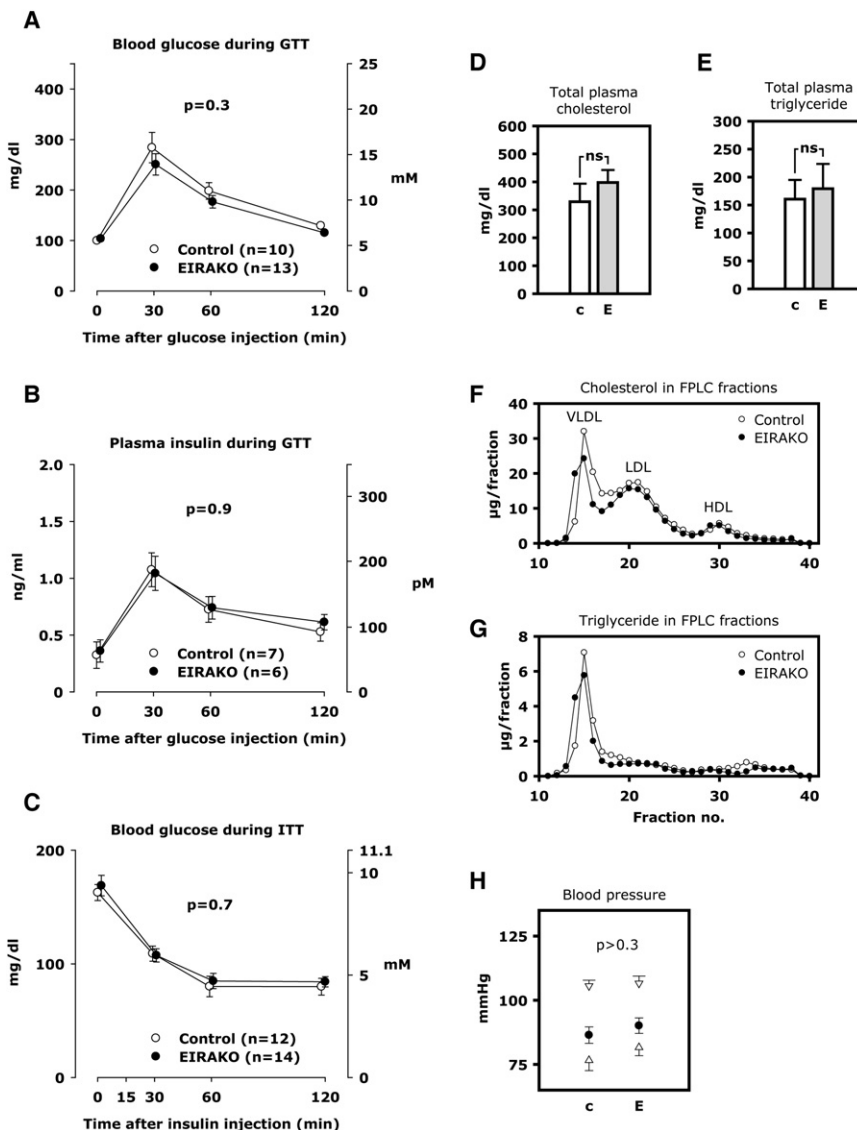
insulin receptor and apolipoprotein E knockout (EIRAKO) mice, using the Cre/loxP system to achieve a conditional knockout of the insulin receptor gene targeted to endothelial cells. These animals were compared with littermate apolipoprotein E (apoE) knockout mice with intact insulin receptor genes (“controls”). Our results show that atherosclerotic disease progression is more severe in EIRAKO mice compared with controls, despite there being no differences in whole-body insulin sensitivity, glucose tolerance, plasma lipids, or blood pressure between the two groups. These results provide definitive evidence that loss of insulin signaling in the endothelium, in the absence of competing systemic risk factors, accelerates atherosclerosis.

## RESULTS

### Insulin Receptor Expression and Insulin Signaling

EIRAKO mice were bred as described in the [Experimental Procedures](#) and maintained on regular chow with 22% of calo-

ries provided by fat. A PCR product representing Cre-mediated recombination was amplified from tail biopsies from EIRAKO mice, but not from hair, which contains no endothelial cells (see [Figure S1A](#) available online, see also the [Supplemental Experimental Procedures](#)). In most organs, endothelial cells constitute only a small fraction of the total cell number. Accordingly, insulin receptor- $\beta$  (IR $\beta$ ) protein expression and insulin-stimulated Akt Ser473 phosphorylation did not differ between control and EIRAKO mice in skeletal muscle ([Figure 1A](#)), liver ([Figure 1B](#)), or adipose tissue ([Figure 1C](#)). In lung tissue, IR $\beta$  protein was decreased by 50% ([Figure 1D](#)), likely because of the high content of endothelial cells in this tissue. Lung endothelial cells were isolated using magnetic microbeads complexed to ICAM-2 antibody during two sequential passages, which resulted in > 99% CD31+ cells ([Figure S1B](#)). IR $\beta$  protein was clearly expressed in cultures from control mice but was not detectable in cultures from EIRAKO mice ([Figure S1C](#), limit of detection described in the [Supplemental Experimental Procedures](#)). Insulin at a concentration of 10 nM increased Akt Ser473 phosphorylation more than 6-fold in lung endothelial cells from control animals but had no effect in cells from EIRAKO mice ([Figures S1C and S1D](#)).



**Figure 2. Whole-Body Glucose Tolerance and Insulin Sensitivity, Plasma Lipids, Blood Pressure**

(A) Blood glucose during glucose tolerance test. (B) Plasma insulin during glucose tolerance test. (C) Plasma glucose during insulin tolerance test. (D–G) Plasma lipids were measured in 12 EIRAKO mice and 11 littermate controls after a 4–6 hr fast. Plasma fractions were obtained by FPLC in a subset of three EIRAKO mice and three littermate controls. (D) Total cholesterol in plasma. (E) Total triglycerides in plasma. (F) Cholesterol concentration in FPLC fractions of plasma. (G) Triglyceride concentration in FPLC fractions of plasma. (H) Blood pressure was measured by tail vein plethysmography in 14 EIRAKO mice and 12 littermate controls. Mean values for systolic and diastolic blood pressure (open triangles) as well as mean blood pressure (closed circles) are shown. In graphs, error bars represent standard error of the mean.

in lung or aortic endothelial cells from EIRAKO compared to control mice (Figure 1E). In cultures of aortic smooth muscle cells, IR $\beta$  protein and insulin-stimulated Akt phosphorylation were not different between the two groups of mice (Figure 1G).

A recent publication showed that in *Akt1*<sup>-/-</sup> mice, insulin-stimulated Akt phosphorylation was intact in whole lysate and in *Akt2* immunoprecipitates from vascular tissue (Symons et al., 2009). We injected insulin intravenously in *Akt2*<sup>-/-</sup> and control mice and found that in the aorta, Akt phosphorylation at Ser473 increased by 5.7- ± 1.0-fold in wild-type mice, but only by 2.0- ± 0.4-fold in *Akt2*<sup>-/-</sup> mice (Figures 1H and 1I,  $p = 0.003$  for the stimulated value in wild-type compared

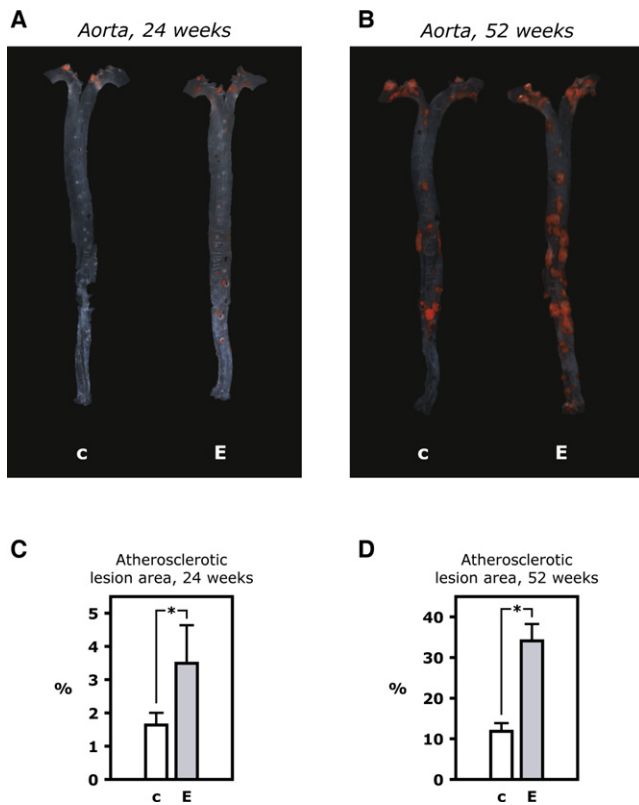
to *Akt2*<sup>-/-</sup> mice). Therefore, a major part of vascular insulin signaling is mediated by Akt2.

### Metabolic Parameters and Blood Pressure

Body mass was not different between EIRAKO mice and their littermate controls (37.3 ± 0.8 versus 37.3 ± 1.6 g at 24 weeks of age, 43.9 ± 3.7 versus 42.7 ± 4.8 g at 52 weeks of age). Furthermore, no difference was seen in random-fed blood glucose (136 ± 8 and 134 ± 9 mg/dl at 12 weeks and 152 ± 24 and 149 ± 12 mg/dl at 52 weeks in EIRAKO and control mice, respectively,  $p > 0.8$ ) or fasting plasma glucose (data not shown). Intraperitoneal glucose tolerance tests showed no difference in blood glucose (Figure 2A) or plasma insulin (Figure 2B) between EIRAKO and control mice, and intraperitoneal insulin tolerance tests did not differ with respect to glucose levels between the two groups (Figure 2C).

Total cholesterol and triglyceride concentrations in plasma from animals fasted 4–6 hr were not different between EIRAKO and control mice at 24 weeks of age (Figures 2D and 2E).

Since lung endothelial cells are mostly of microvascular origin, we also examined macrovascular endothelial cells, isolated with the same approach of immunomagnetic sorting as described above. As with microvascular endothelial cells, no IR $\beta$  protein was detectable in cultured aortic endothelial cells from EIRAKO mice (Figure 1E). Insulin had no effect on Akt Ser473 phosphorylation in these cells, compared with a 4-fold increase in Akt phosphorylation in cells from control animals after insulin treatment (Figures 1E and 1F,  $p < 0.001$ ). Similarly, insulin treatment caused a 50% ± 18% increase in Erk1/2 phosphorylation in aortic endothelial cells from control mice but had no effect on cells from EIRAKO mice (Figure 1E). Of note, unstimulated Erk phosphorylation was increased by 71% ± 7% in cells from EIRAKO mice compared with control cells (Figure 1E). A similar increase in unstimulated Erk phosphorylation was found in lung endothelial cells, where Erk phosphorylation in cells from EIRAKO was 55% ± 20% higher than in cultures from control animals ( $p = 0.03$ , data not shown). Insulin-like growth factor-1 receptor- $\beta$  (IGF-IR $\beta$ ) protein was not different



**Figure 3. Atherosclerotic Lesion Size in the Aorta**

(A) Microphotographs of aortas from an EIRAKO mouse and its littermate control at 24 weeks of age in the en face flat preparation after staining with Sudan IV.

(B) Stained aortas at 52 weeks of age.

(C) Summary data from quantitation of atherosclerotic lesion area relative to total area of the aorta in 10 EIRAKO mice and eight littermate controls at 24 weeks of age.

(D) Summary data from 9 EIRAKO animals and 11 littermate controls at 52 weeks of age.

In graphs, error bars represent standard error of the mean.

Similarly, total plasma cholesterol and triglyceride showed no significant differences in mice fasted overnight or mice fasted 4–6 hr or overnight at 12 weeks of age (data not shown). Cholesterol and triglyceride concentrations were also measured in lipoprotein fractions separated by fast protein liquid chromatography (FPLC) and were similar between the two groups of animals (Figures 2F and 2G).

Blood pressure and pulse were measured by tail vein plethysmography. There were no significant differences in systolic blood pressure, diastolic blood pressure, or mean blood pressure between the two groups (Figure 2H). Thus, the loss of insulin receptors in the endothelium did not change whole-body glucose tolerance, systemic insulin sensitivity, plasma lipids, or blood pressure.

#### Atherosclerosis in the Aorta and Brachiocephalic Artery

Atherosclerotic lesions were evaluated in several different ways. The entire aorta was stained with Sudan IV to visualize atherosclerotic plaques in flat preparations (en face preparations) (Figures 3A and 3B). Atherosclerotic plaques were not observed

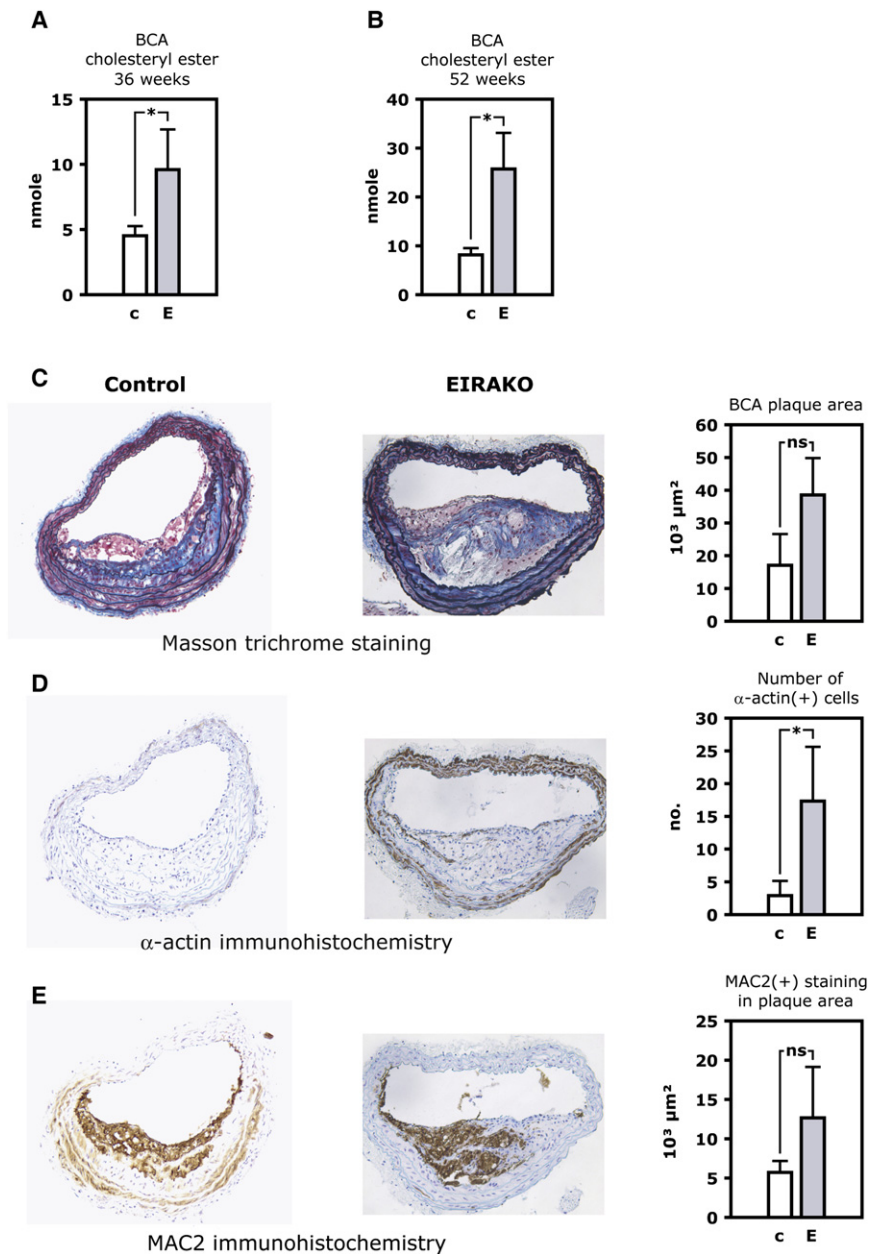
in vascular endothelial insulin receptor knockout (VENIRKO) mice (Vicent et al., 2003), which have no apoE gene mutation (data not shown). In EIRAKO mice, the mean atherosclerotic lesion area, expressed relative to total aortic luminal area, was 2.1-fold greater at 24 weeks than in littermate controls ( $3.5\% \pm 1.1\%$  and  $1.6\% \pm 0.4\%$ , respectively,  $p = 0.01$ , Figure 3C) and 2.9-fold greater at 52 weeks ( $34.1\% \pm 4.1\%$  and  $11.8\% \pm 2.0\%$ , respectively,  $p = 0.00007$ , Figure 3D). Lesion area normalized to values for littermate controls was also analyzed. By this approach, when lesion area in each EIRAKO mice belonging to a given litter was expressed as a fraction of the average lesion area in control animals belonging to that litter, results were similar (lesion area in EIRAKO mice  $2.7 \pm 0.5$  times higher than controls at 24 weeks,  $p = 0.02$ ;  $4.4 \pm 1.6$  times higher than controls at 52 weeks,  $p = 0.02$ ).

Atherosclerotic lesions were also analyzed in the brachiocephalic artery in mice 36 weeks of age by quantitatively extracting lipids from the brachiocephalic artery with chloroform/methanol followed by measurement of cholesteryl ester content by mass spectroscopy. As cholesteryl ester is a major component of the lipid accumulated in atherosclerotic plaques, this provided a measure of plaque volume. Cholesteryl ester content in the brachiocephalic artery was more than 2-fold higher in EIRAKO mice compared to controls ( $9.6 \pm 3.1$  and  $4.5 \pm 0.7$  nmole, respectively,  $p = 0.03$ , Figure 4A) and more than 3-fold higher at 52 weeks ( $25.7 \pm 7.4$  and  $8.1 \pm 1.4$  nmole, respectively,  $p = 0.048$ , Figure 4B). After lipid extraction, the brachiocephalic arteries were analyzed histologically. Planimetry of the area covered by plaques in histological cross-sections showed that plaque area was larger in EIRAKO mice, although this did not reach statistical significance ( $38,578 \pm 11,245$  and  $17,091 \pm 9,506 \mu\text{m}^2$  in EIRAKO mice and their controls, respectively;  $p = 0.4$ ; Figure 4C). Collagen, stained blue by Masson's trichrome, was distributed throughout plaques in both groups (Figure 4C). There were significantly more vascular smooth muscle cells per plaque cross-section in EIRAKO mice compared to controls ( $17.3 \pm 8.3$  and  $2.9 \pm 2.3 \alpha$ -actin-positive cells per section, respectively;  $p = 0.04$ ; Figure 4D), indicating that EIRAKO mice had more complex atherosclerotic lesions. The area occupied by macrophages tended to be higher in EIRAKO mice ( $12,664 \pm 6,473 \mu\text{m}^2$  and  $5,724 \pm 1,444$ , respectively;  $p = 0.16$ ; Figure 4E).

Atherosclerotic lesions in cross-sections of the aortic sinus were analyzed at 52 weeks of age. The mean cross-sectional area was not different in EIRAKO and control mice ( $389,841 \pm 77,547$  and  $359,791 \pm 58,034 \mu\text{m}^2$ , respectively; Figures S2A, S2B, and S2I;  $p = 0.8$ ). Similarly, there was no difference in plaque area positive for macrophage immunostaining (Figures S2C, S2D, and S2J) or number of smooth muscle cells identified by immunostaining (Figures S2E and S2F) in the two groups. Most of the difference in atherosclerotic lesion area in the aorta appeared to be in the descending aorta, which may explain why no difference was seen in the aortic sinus. Subocclusive plaques in coronary arteries were observed in animals from both groups (Figures S2G and S2H).

#### eNOS Regulation

In control mice, intravenous injection of insulin resulted in a  $69\% \pm 13\%$  increase in eNOS Ser1177 phosphorylation in the



**Figure 4. Brachiocephalic Artery Lesion Size and Atherosclerotic Plaques Histology**

Lipids were quantitatively extracted from the brachiocephalic artery, which was then paraffin embedded and cross-sectioned. Cholesteryl ester was measured in lipid extracts by mass spectrometry.

(A) Cholesteryl ester content in the brachiocephalic artery at 36 weeks.

(B) Cholesteryl ester content in the brachiocephalic artery at 52 weeks.

(C–E) Histological staining and immunohistochemistry of brachiocephalic artery cross-sections. Representative images are shown (left), as are mean values of quantitative analysis (right).

(C) Masson's trichrome stain, with collagen staining blue. (D) MAC-2 immunohistochemistry to visualize plaque area occupied by macrophages. (E)  $\alpha$ -smooth muscle cell actin immunohistochemistry to identify vascular smooth muscle cells. In graphs, error bars represent standard error of the mean. See also Figure S2.

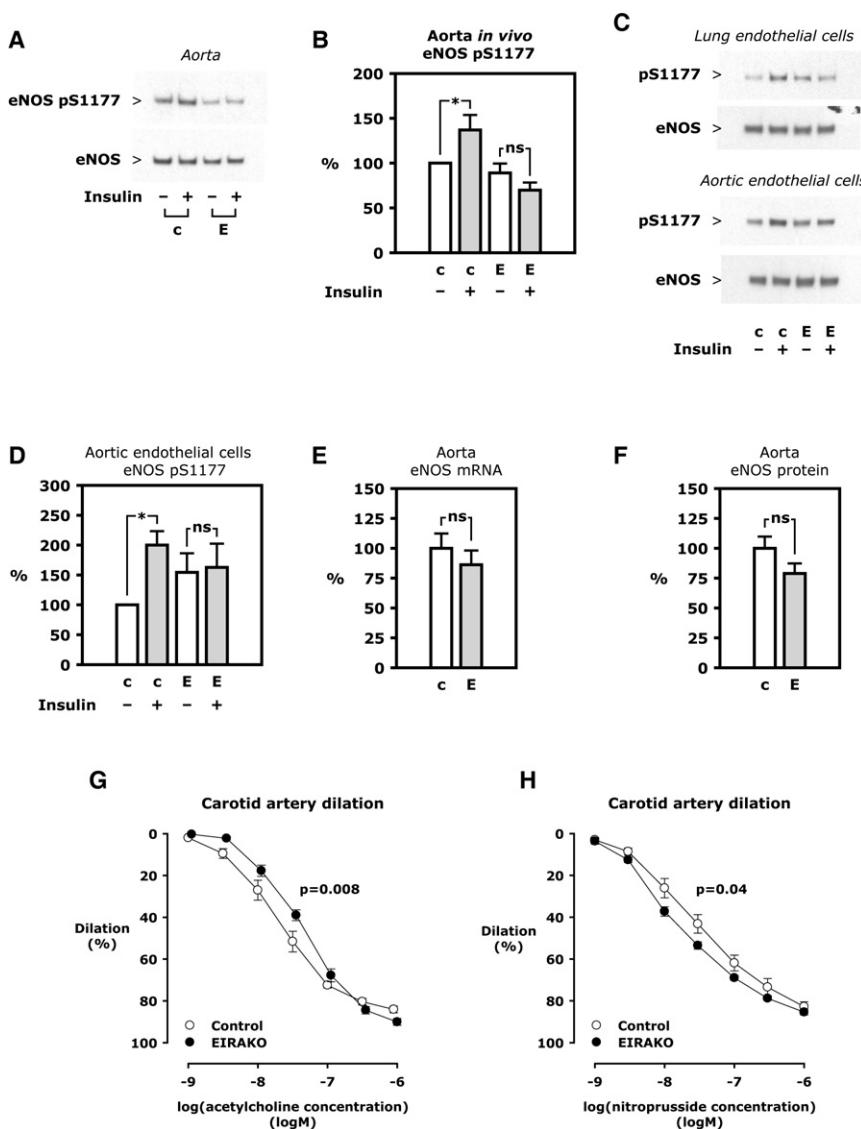
insulin-stimulated eNOS phosphorylation is lost in EIRAKO mice, both in isolated endothelial cells and in the aorta in vivo.

eNOS expression is decreased in aorta and endothelial cells from VENIRKO mice (Vicent et al., 2003). In EIRAKO mice, however, no changes in expression of eNOS mRNA or protein in the aorta were observed when compared with their controls (Figures 5E and 5F). In a proatherosclerotic environment, eNOS gene expression is likely upregulated by factors other than insulin, such as oxidative stress (Drummond et al., 2000). Indeed, mRNA expression of the antioxidant enzyme HO-1 (*Hmox1*) was significantly increased in EIRAKO mice (to  $165\% \pm 25\%$  of the level in controls,  $p = 0.04$ ), likely reflecting that oxidative stress in a more proatherosclerotic milieu is quantitatively more important for its regulation than insulin signaling. The

aorta compared to mice injected with vehicle ( $p = 0.007$ , Figures 5A and 5B). By contrast, insulin injection did not change eNOS phosphorylation in the aortas of EIRAKO mice compared to vehicle injection (Figures 5A and 5B). eNOS phosphorylation was not different in aortas from EIRAKO and control mice injected with vehicle (Figures 5A and 5B). In lung aortic endothelial cells isolated from control mice, eNOS phosphorylation increased 2-fold after treatment with insulin (Figures 5C and 5D,  $p = 0.01$  for aortic endothelial cells). Insulin treatment did not increase eNOS phosphorylation in cells from EIRAKO mice, although phosphorylation state tended to be higher in the unstimulated condition ( $68\% \pm 34\%$  higher in unstimulated aortic endothelial cells from EIRAKO mice than in unstimulated cells from control mice,  $p = 0.11$ , Figures 5C and 5D). Therefore,

expression of other anti- and pro-oxidant genes, including *Sod1*, *Cybb* (*Nox2/gp91<sup>phox</sup>*), *Ncf1* (*p47<sup>phox</sup>*), and *Nox4*, was not changed (data not shown). Also, no change was observed in aortic endothelin-1 (*Edn1*) expression (expression in EIRAKO mice  $91\% \pm 8\%$  of and  $109\% \pm 20\%$  of controls at 12 and 20 weeks, respectively; 20 versus 20 and 9 versus 12 animals, respectively;  $p > 0.4$ ).

To study the functional consequences of the changes in eNOS regulation in EIRAKO mice, we measured vasodilation stimulated by acetylcholine, most of which is dependent on endothelium-derived NO. Isolated carotid arteries from EIRAKO mice had decreased sensitivity to acetylcholine, as the  $EC_{50}$  in EIRAKO mice was almost twice as high as in controls ( $44 \pm 5.6$  and  $23 \pm 3.8$  nM, respectively, Figure 5G,  $p = 0.008$ ).



**Figure 5. eNOS Regulation**

(A) Insulin 5 mU/g was injected i. v. and the aorta removed after 5 min. Western blotting was performed on aorta lysate.

(B) Mean values of eNOS Ser1177 phosphorylation relative to eNOS based on densitometry of western blots of aorta from six sets of four animals.

(C) Primary cultures of lung and aortic endothelial cells isolated from an EIRAKO mouse and its littermate control were treated with insulin (100 nM in lung endothelial cells, 10 nM in aortic endothelial cells, 5 min). Representative western blots are shown.

(D) Mean values of eNOS Ser1177 phosphorylation relative to eNOS expression in aortic endothelial cells from three independent experiments.

(E) eNOS mRNA expression in aorta measured by real-time PCR, mean results from 11 EIRAKO mice and 9 controls.

(F) eNOS protein in aorta based on densitometry of western blots and normalized to actin, mean results from 11 EIRAKO mice and 8 controls.

(G and H) The carotid artery was isolated, mounted, and pressurized in a myograph. Graphs show mean vasodilation using arteries from six control and six EIRAKO mice. (G) Concentration-response study using acetylcholine. (H) Concentration-response study using sodium nitroprusside.

In graphs, error bars represent standard error of the mean.

Vasodilator responses to exogenous NO, measured during concentration-response studies with sodium nitroprusside, showed that arteries from EIRAKO mice were more NO sensitive (with an EC<sub>50</sub> of 20 ± 2.5 and 39 ± 8.5 nM in EIRAKO and control mice, respectively, Figure 5H, p = 0.04). These experiments establish that NO-mediated vasodilation is impaired in EIRAKO mice compared to controls but indicate that vascular smooth muscle cell sensitivity to NO is increased, perhaps as a compensatory mechanism.

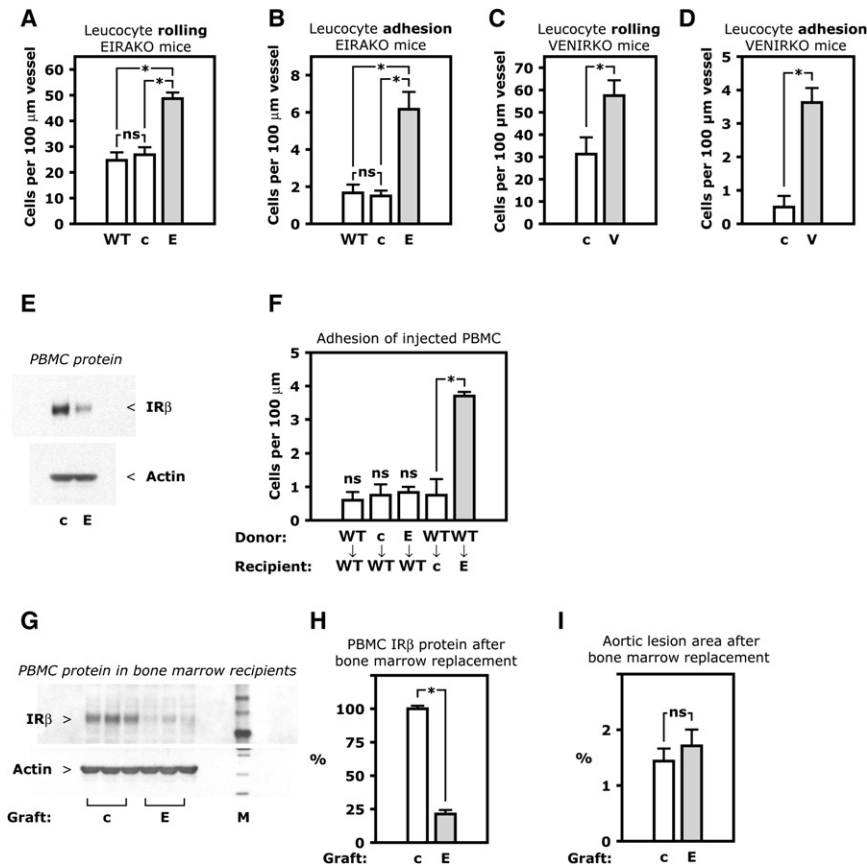
### Leukocyte-Endothelial Cell Interaction In Vivo

Decreased eNOS activity plays a major role in the development of atherosclerosis, in part by decreasing the interaction of monocytes and other leukocytes with endothelium. We therefore evaluated leukocyte interaction with endothelium *in vivo*, using intravital microscopy of the mesenteric circulation after labeling of leukocytes with a fluorescent dye. In 12-week-old EIRAKO animals, the number of rolling leukocytes increased by 1.8-fold compared to controls (26.8 ± 2.9 and 48.7 ± 2.3 rolling leuko-

cytes per 100 μm in EIRAKO and controls, respectively, p = 0.004, Figure 6A).

The number of firmly adhering leukocytes increased by 4.1-fold (1.5 ± 0.3 and 6.2 ± 0.9 adhering leukocytes per 100 μm, respectively, p < 0.001, Figure 6B).

We have previously shown an increase in leukocyte rolling and adherence in apoE null compared to wild-type mice while fed a regular chow diet, using the same intravital preparation as in the current paper (Scalia et al., 2001). However, rolling and adherence were not different between EIRAKO controls and wild-type mice (Figures 6A and 6B), likely because mice used in the previous study were up to twice as old (Scalia et al., 2001). The apoE null phenotype, however, could modify the effects of endothelial insulin receptor knockout on leukocyte-endothelium interaction in EIRAKO mice. Therefore, we performed experiments in VENIRKO animals and their controls, both of which are wild-type for apoE. Leukocyte rolling was increased by 1.8-fold in VENIRKO mice compared with their littermate controls (57.5 ± 6.9 and 31.3 ± 7.5 rolling leukocytes per 100 μm vessel length, respectively; Figure 6C, p = 0.03). As in EIRAKO mice, leukocyte adhesion was increased dramatically in VENIRKO mice, by 7.3-fold compared with their controls (3.6 ± 0.4 and 0.5 ± 0.3 adhering leukocytes per 100 μm, respectively; Figure 6D, p = 0.001). Thus, increased leukocyte-endothelial cell interaction resulting from a loss of insulin signaling occurs in the absence of hypercholesterolemia.



**Figure 6. Leukocyte-Endothelial Cell Interaction In Vivo**

(A–D) Circulating leukocytes were fluorescently labeled by i.v. injection of rhodamine and visualized in peri-intestinal, postcapillary venules by intravital microscopy. Mean numbers of rolling or firmly adhering leukocytes in three to four animals are shown. (A) Leukocyte rolling in EIRAKO mice and controls. (B) Leukocyte adhesion in EIRAKO mice. (C) Leukocyte rolling in VENIRKO mice and controls, both wild-type for apoE. (D) Leukocyte adhesion in VENIRKO mice and controls.

(E) Western blotting of lysate of PBMCs. (F) Adhesion in vivo of transferred mononuclear cells. PBMCs were freshly isolated from one donor animal, labeled with rhodamine ex vivo, and injected i.v. in a single recipient animal. Mean numbers of firmly adhering PBMCs, with genotypes of donor and recipient animals indicated, are shown (n = 3–5).

(G–I) Bone marrow transplantation in apoE knockout mice, which were lethally irradiated and received a graft of bone marrow cells from EIRAKO or control mice. An atherogenic “Western” diet was started the day after transplantation. (G) Western blotting of PBMC lysate 8 weeks after transplantation. (H) Mean values for IRβ protein based on densitometry of western blots of PBMC from three mice in each group of apoE knockout mice with EIRAKO or control bone marrow replacement. See also Figure S3. (I) Mean values for atherosclerotic lesion area in the aorta in 11 recipients of EIRAKO mice bone marrow and 11 recipients of control bone marrow 8 weeks after bone marrow transplantation.

Abbreviations: E, endothelial insulin receptor and apoE knockout (EIRAKO) mice; V, vascular endothelial receptor knockout (VENIRKO) mice; PBMC, peripheral blood mononuclear cells.

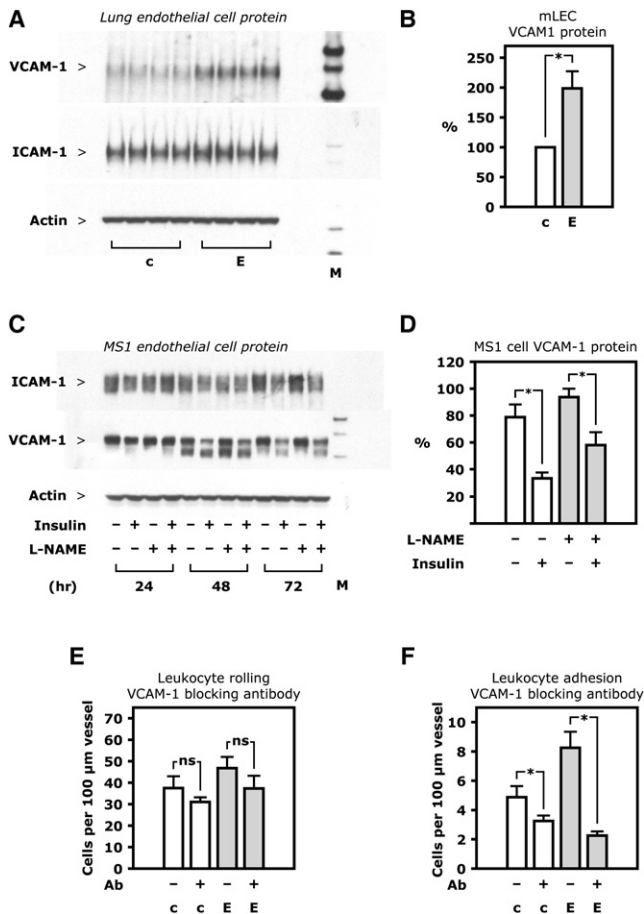
In graphs, error bars represent standard error of the mean.

### Mononuclear Cell Transfer and EIRAKO Bone Marrow Transplantation

When it was first characterized, the Tie2-Cre transgene used in the creation of EIRAKO mice did not result in Cre-mediated recombination in embryonic hematopoietic cells (Kisanuki et al., 2001). However, a recent study showed that Tie2 was expressed in 20% of human blood monocytes (Murdoch et al., 2007). We therefore measured insulin receptor expression in peripheral blood mononuclear cells (PBMCs) from EIRAKO mice and found that IRβ protein was reduced by 68% compared with controls (Figure 6E). IRβ was also reduced in thioglycollate-induced peritoneal macrophages (Figure S3) and in bone marrow (data not shown). To determine whether the large increase in firmly adhering leukocytes in EIRAKO mice was due to decreased insulin receptor expression in mononuclear cells, PBMC were isolated from wild-type mice, from EIRAKO mice, or from their littermate controls and subsequently injected intravenously into wild-type recipients after being labeled ex vivo with a fluorescent dye. The adherence of PBMC to wild-type endothelium was not different whether the donor PBMCs were from wild-type mice, EIRAKO mice, or their littermate controls ( $0.60 \pm 0.25$ ,  $0.83 \pm 0.17$ , or  $0.75 \pm 0.32$  adhering leukocytes per 100 μm, respectively, Figure 6F). Each of these rates of adherence was not different from the adherence of PBMC from

wild-type mice when injected into control mice ( $0.75 \pm 0.48$  adhering leukocytes per 100 μm, Figure 6F). These data demonstrate that PBMC from both EIRAKO mice and their controls were functionally normal with respect to their adherence to endothelial cells. In contrast, when PBMC were isolated from wild-type mice and injected into EIRAKO recipients, the number of adhering donor cells was more than 4-fold higher than in any of the other transfer experiments ( $3.7 \pm 0.1$  adhering PBMC per 100 μm, Figure 6F,  $p < 0.001$ ). Therefore, the abnormally high leukocyte-endothelial cell adhesion in EIRAKO mice is caused by a functional abnormality in the endothelium rather than in leukocytes.

Once resident in the vascular wall, leukocytes with reduced insulin receptor expression could contribute to plaque development differently than leukocytes with normal expression of insulin receptor protein. We therefore studied whether bone marrow-derived cells from EIRAKO mice would cause different atherosclerosis progression than control bone marrow cells. apoE null mice were lethally irradiated and received bone marrow grafts from either EIRAKO mice or littermate controls. Chimerism after bone marrow replacement was evident by a reduction of IRβ protein by  $79\% \pm 3\%$  in PBMC isolated from apoE null mice transplanted with EIRAKO bone marrow grafts compared to recipients of control bone marrow (Figures 6G



**Figure 7. VCAM-1 Regulation**

(A) Western blotting of whole-cell lysate from lung endothelial cells isolated from one EIRAKO mouse and one control, with each sample loaded as four replicates.

(B) Mean values for VCAM-1 protein based on densitometry of western blots of lung endothelial cell lysate from four pairs of EIRAKO mice and controls.

(C) Western blotting of whole-cell lysate from MS1 endothelial cells.

(D) Mean values for ICAM-1 and VCAM-1 protein based on densitometry of western blots from three independent experiments in MS1 endothelial cells.

(E and F) Leukocyte rolling on and firm adhesion to endothelium of peri-intestinal, postcapillary venules visualized by intravital microscopy after fluorescent labeling by i.v. injection of rhodamine. Measurements were repeated 60 min after i.v. injection of a VCAM-1-blocking antibody. Mean values from four pairs of animals 20–23 weeks of age are shown. (E) Leukocyte rolling before and after VCAM-1 injection. (F) Leukocyte adhesion before and after VCAM-1 injection.

In graphs, error bars represent standard error of the mean.

and 6H). Despite a reduction of PBMC insulin receptor expression comparable to the level seen in EIRAKO mice, aortic atherosclerotic lesion area 8 weeks after transplantation was no different in recipients of EIRAKO bone marrow than in recipients of control bone marrow (Figure 6).

### Regulation of VCAM-1

Endothelial cells affect leukocyte adhesion, and to some extent leukocyte rolling, by expression levels of ICAM-1 and VCAM-1. In lung endothelial cells from EIRAKO mice, VCAM-1 protein expression was 199% ± 29% of the level seen in cells isolated

from control mice (Figures 7A and 7B,  $p = 0.01$ ), whereas ICAM-1 protein expression was no different (Figure 7A). This suggested that insulin might negatively regulate VCAM-1. When MS1 mouse endothelial cells were treated with 10 nM insulin, VCAM-1 protein expression was reduced by 22% ± 8.3% after 24 hr ( $p = 0.06$ ), 46% ± 7% after 48 hr ( $p = 0.01$ ), and by 57% ± 2% after 72 hr ( $p = 0.01$ ) compared with cultures grown under identical conditions for the same duration without insulin (Figures 7C and 7D). No changes were seen either 4 or 8 hr after insulin treatment (data not shown).

To demonstrate that increased expression of VCAM-1 was the cause of increased leukocyte-endothelial cell interaction in vivo, we used a VCAM-1 antibody with documented ability to block leukocyte adhesion to endothelial cells. Leukocyte rolling and adhesion was monitored by intravital microscopy before and 60 min after intravenous injection of the antibody. This treatment had no significant effect on leukocyte rolling in EIRAKO or control mice (Figure 7E,  $p > 0.2$ ). However, the VCAM-1 antibody decreased leukocyte adhesion in EIRAKO mice by 72.6% ± 1.0%, to below control levels (Figure 7F,  $p = 0.01$ ). These results indicate that VCAM-1 upregulation in EIRAKO mice contributes significantly to the increased leukocyte-endothelial adhesion observed in these animals.

### DISCUSSION

The current study provides definitive evidence that a loss of insulin signaling in the vascular endothelium without changes in systemic metabolism promotes early events in atherosclerosis and accelerates the progression of advanced atherosclerotic disease. These outcomes support the hypothesis previously examined by us (Jiang et al., 1999) and others (Steinberg et al., 1996), proposing that in patients with obesity or type 2 diabetes, insulin resistance in endothelial cells may contribute to increased risk for development of cardiovascular disease.

Our results show that systemic insulin action in EIRAKO mice is no different than in control mice. Thus, endothelial insulin resistance did not cause changes in whole-body glucose tolerance, circulating insulin concentrations, or insulin sensitivity in EIRAKO mice compared to controls. This is consistent with what has previously been reported for VENIRKO mice (Vicent et al., 2003) and with findings in transgenic mice with a mutant insulin receptor targeted to endothelium (Duncan et al., 2008). Furthermore, the similarity in cholesterol and triglyceride content in lipoproteins between EIRAKO mice and their controls shows that insulin signaling in endothelial cells does not significantly alter regulation of lipoprotein metabolism in the liver or adipose tissue. This lack of differences in systemic insulin sensitivity or lipoprotein profile between control and EIRAKO mice is essential in order for us to conclude that the accelerated atherosclerosis in EIRAKO mice is a direct result of the loss of insulin action on the endothelium.

Leukocyte rolling on and adhesion to endothelial cells in vivo were increased in both EIRAKO mice, which are apoE null, and VENIRKO mice, which are apoE wild-type. These findings correspond with results showing upregulation of VCAM-1 expression in endothelial cells isolated from EIRAKO mice, and decreased VCAM-1 protein expression in endothelial cells treated with insulin. The functional significance of this finding



was demonstrated by experiments *in vivo* showing that a VCAM-1-blocking antibody reduced leukocyte-endothelial cell adhesion in EIRAKO mice to below control levels. Epidemiological evidence supports that upregulation of VCAM-1 in association with insulin resistance is clinically important, because in patients with type 2 diabetes, soluble VCAM-1 concentrations are independently associated with cardiovascular mortality (Jager et al., 2000). However, previously published mechanistic studies on the effect of insulin on the expression of factors that promote adhesion have been contradictory. Several studies, among them work by De Caterina et al. (Madonna et al., 2004), have shown that insulin can increase the expression of ICAM-1 and VCAM-1 in endothelial cells, although other studies have shown that insulin inhibits expression of ICAM-1 (Aljada et al., 2000) and P-selectin (Booth et al., 2001). We are not aware of previously published evidence demonstrating regulation of VCAM-1 by insulin *in vivo*.

In the current study, NO-mediated vasodilator function was impaired in EIRAKO mice, and loss of insulin-stimulated phosphorylation of Akt and eNOS was clearly demonstrated in the aorta *in vivo* and in isolated endothelial cells. NO synthesized by eNOS decreases both leukocyte rolling and adhesion (Lefer et al., 1999), and NO has been shown to inhibit expression of VCAM-1 and other factors promoting leukocyte adhesion through deactivation of NF- $\kappa$ B (De Caterina et al., 1995; Khan et al., 1996). Therefore, decreased endothelium-derived NO could result in increased expression of adhesion molecules or promote atherosclerotic plaque development and complexity through other mechanisms. For example, impaired NO production could increase the number of intraplaque vascular smooth muscle cells, as shown by our data from brachial artery immunohistochemistry, because NO inhibits vascular smooth muscle cell migration (Sarkar et al., 1996). However, NO production could not account for insulin-stimulated downregulation of VCAM-1 in our cell culture studies, as L-NAME was unable to block these effects of insulin. Therefore, it is likely that the regulation of VCAM-1 by insulin is mediated by another mechanism, perhaps through the nuclear factor forkhead box O1 (FoxO1/FKHR). Transcriptional activity of FoxO1 is suppressed by insulin (Nakae et al., 1999; Tang et al., 1999), and FoxO1 activation upregulates VCAM-1 expression (Abid et al., 2006). Such mechanisms may be similar to or separate from the proinflammatory and proatherosclerotic changes observed in whole-body *Akt1*<sup>-/-</sup> mice (Fernandez-Hernando et al., 2007). These questions are currently being investigated in our laboratory.

We observed a dramatic increase in mononuclear cell adhesion when mononuclear cells from wild-type mice were injected into EIRAKO mice. In contrast, no abnormality of mononuclear cell adhesion to endothelial cells was observed when mononuclear cells from EIRAKO mice were injected into control littermates or wild-type mice. These data show that increased leukocyte-endothelial cell interaction in EIRAKO mice is caused by endothelial cell dysfunction rather than changes in monocyte function. Similarly, replacement of bone marrow in apoE null mice with bone marrow from EIRAKO mice or their controls showed that insulin receptor downregulation in bone marrow-derived cells was not sufficient to accelerate atherosclerosis. We therefore conclude that the vascular inflammation and accelerated atherosclerosis observed in EIRAKO mice is a result of the

loss of insulin signaling in endothelial cells, with no significant contribution from the downregulation of insulin signaling in leukocytes.

A previous study has shown that the loss of insulin receptors in macrophages or leukocytes may decrease atherosclerosis in apoE null mice (Baumgartl et al., 2006). Furthermore, replacing the bone marrow in apoE null mice with transplants from insulin receptor substrate-2 (IRS-2)/apoE double knockout mice decreased atherosclerosis even though IRS-2/apoE double knockout mice had increased atherosclerosis compared to apoE null controls (Baumgartl et al., 2006; Gonzalez-Navarro et al., 2008). Another study showed that transplantation of bone marrow from insulin receptor null mice to lethally irradiated LDL receptor null mice had no effect after 8 weeks of an atherogenic diet and demonstrated a modest increase after 12 weeks (Han et al., 2006), as well as increased apoptosis of macrophages and an increased rate of necrotic core formation in atherosclerotic plaques. Therefore, even though decreased expression of insulin receptor in mononuclear cells in EIRAKO mice did not appear to affect increased leukocyte-endothelial interaction or atherosclerotic development, complete loss of insulin signaling in leukocytes, or loss of insulin action in certain subsets of bone-marrow derived cells, may decrease the progression of atherosclerosis while promoting necrotic core formation in more advanced plaques.

In vascular tissue from obese rats and patients with diabetes, the major insulin signaling pathway represented by PI3K and Akt is affected selectively by insulin resistance, whereas the pathway represented by mitogen-activated protein kinase (MAPK) is intact (Jiang et al., 1999). We have therefore proposed that in the normal, insulin-sensitive state, insulin action on the endothelium is mainly mediating antiatherogenic effects by activating the PI3K/Akt pathway (Jiang et al., 1999). However, in the insulin resistant state, often associated with hyperinsulinemia, proatherogenic insulin action on endothelium may be mediated by MAPK pathways (Rask-Madsen and King, 2007). By using a mouse model with a null mutation of the insulin receptor gene in endothelial cells, our study may underestimate the contribution of selective insulin resistance in the endothelium in disease states because potential proatherosclerotic insulin signaling mediated by MAPK is lost in the mouse model, while it may be functional in human disease. Future studies will be needed to determine whether enhancement of the insulin receptor substrate/PI3K/Akt signaling pathway in endothelium can delay atherosclerosis development.

In summary, we have demonstrated that insulin action on the endothelium is mainly antiatherogenic and that loss of insulin signaling in endothelial cells promotes initiation of atherosclerosis and its progression, and increases the complexity of advanced atherosclerotic lesions. The findings further indicate that insulin plays a quantitatively prominent role in maintaining normal endothelial function, and that endothelial insulin resistance may accelerate atherosclerosis by causing impaired activation of eNOS, increased endothelial expression of VCAM-1, and increased leukocyte interaction with endothelial cells. These results provide the rationale for identifying interventions that can decrease the risk of atherosclerotic disease in patients with insulin resistance or diabetes by alleviating insulin resistance in the endothelium.

## EXPERIMENTAL PROCEDURES

Additional details of the [Experimental Procedures](#) are included in the [Supplemental Information](#).

### Animals

VENIRKO mice (Vicent et al., 2003) were cross-bred with apoE null mice using breeding of Cre-positive males and Cre-negative females. Male  $Cre^+ Insr^{flox/flox} ApoE^{-/-}$  (EIRAKO) mice and littermate  $Cre^- Insr^{flox/flox} ApoE^{-/-}$  (control) mice were used for experiments. Mice were fed a regular chow diet with 9.0% (w/w) fat and 0.221 ppm cholesterol. All protocols for animal use and euthanasia were reviewed and approved by the Animal Care Committee of the Joslin Diabetes Center and were in accordance with National Institutes of Health (NIH) guidelines.

### Cell Culture

Cell culture was obtained from lung tissue or aorta after digestion with collagenase. Endothelial cells were isolated during the first two passages with the use of magnetic beads complexed to ICAM-2 antibody as described previously (Hartwell et al., 1998). Aortic smooth muscle cells were obtained as the ICAM-2-negative fraction after immunoselection of cells cultured from aortic digest. MS1 endothelial cells were purchased from the American Type Culture Collection (ATCC, Manassas, VA) and cultured in DMEM containing 5% FBS.

### Carotid Vasodilation

Concentration-response studies of vasodilation stimulated by acetylcholine and sodium nitroprusside were performed as described previously (Atochin et al., 2007).

### Intravital Microscopy and Quantitation of Leukocyte-Endothelial Cell Interaction

Leukocyte-endothelial cell interaction was observed in postcapillary venules of the peri-intestinal microcirculation as described (Ouedraogo et al., 2007).

### Analysis of Atherosclerotic Plaques in the Aorta, the Brachiocephalic Artery, and the Aortic Sinus

The whole aorta, from just distal to the aortic sinus to the iliac bifurcation, was stained with Sudan IV. The stained aortas were placed between two glass slides and photographed under polarized light through a dissection microscope. Lipids were extracted from the brachiocephalic artery and analyzed for cholesterol ester abundance by mass spectrometry as previously described (Kuo et al., 2008). Cross-sections of paraffin-embedded brachiocephalic artery and cryosections of the aortic sinus were stained as described previously (Kuo et al., 2008).

### Statistical Analysis

Comparisons were made using paired or unpaired *t* test, as appropriate, with  $p < 0.05$  considered statistically significant. In text and graphs, data are presented as the mean  $\pm$  standard error of the mean.

## SUPPLEMENTAL INFORMATION

Supplemental Information includes three figures, Supplemental Experimental Procedures, and Supplemental References and can be found with this article at [doi:10.1016/j.cmet.2010.03.013](https://doi.org/10.1016/j.cmet.2010.03.013).

## ACKNOWLEDGMENTS

We are grateful for expert technical assistance provided by Alevtina Pinkhasov of the Advanced Microscopy Core at Joslin Diabetes Center, supported by NIH grant 5P30DK036836; Michael Kalbfleisch for work using mass spectrometry; and Donetta Gifford-Moore for work on brachiocephalic artery histology. Measurement of serum insulin was performed by the Joslin Diabetes Center Specialized Assay Core, which is supported by NIH grant 5P30DK036836. Plasma lipid profiles were measured by Dr. Vladimir Babaev at the Lipid, Lipoprotein, and Atherosclerosis Core of the Vanderbilt Mouse Metabolic Phenotype Centers with support from NIH grant DK59637. This work was funded in part by support to C.R.-M. from the Danish Medical Research

Council fellowship (grant 22-01-0498), the Danish Heart Foundation (grant 01-2-2-79-22946), a Mary K. Iacocca Fellowship provided by the Iacocca Foundation, and NIH grant K08 EY018677. The study was also supported by NIH R01 grants DK064344 to R.S., DK31036 to C.R.K., and DK053105 to G.L.K. The content of this manuscript is solely the responsibility of the authors and does not necessarily represent the official views of the funding agencies.

Received: March 19, 2009

Revised: February 1, 2010

Accepted: March 16, 2010

Published: May 4, 2010

## REFERENCES

- Abid, M.R., Shih, S.C., Otu, H.H., Spokes, K.C., Okada, Y., Curiel, D.T., Minami, T., and Aird, W.C. (2006). A novel class of vascular endothelial growth factor-responsive genes that require forkhead activity for expression. *J. Biol. Chem.* 281, 35544–35553.
- Aljada, A., Saadeh, R., Assian, E., Ghanim, H., and Dandona, P. (2000). Insulin inhibits the expression of intercellular adhesion molecule-1 by human aortic endothelial cells through stimulation of nitric oxide. *J. Clin. Endocrinol. Metab.* 85, 2572–2575.
- Atochin, D.N., Wang, A., Liu, V.W., Critchlow, J.D., Dantas, A.P., Looft-Wilson, R., Murata, T., Salomone, S., Shin, H.K., Ayata, C., et al. (2007). The phosphorylation state of eNOS modulates vascular reactivity and outcome of cerebral ischemia in vivo. *J. Clin. Invest.* 117, 1961–1967.
- Baumgartl, J., Baudler, S., Scherner, M., Babaev, V., Makowski, L., Suttles, J., McDuffie, M., Tobe, K., Kadowaki, T., Fazio, S., et al. (2006). Myeloid lineage cell-restricted insulin resistance protects apolipoproteinE-deficient mice against atherosclerosis. *Cell Metab.* 3, 247–256.
- Booth, G., Stalker, T.J., Lefer, A.M., and Scalia, R. (2001). Elevated ambient glucose induces acute inflammatory events in the microvasculature: effects of insulin. *Am. J. Physiol. Endocrinol. Metab.* 280, E848–E856.
- Cardillo, C., Nambi, S.S., Kilcoyne, C.M., Choucair, W.K., Katz, A., Quon, M.J., and Panza, J.A. (1999). Insulin stimulates both endothelin and nitric oxide activity in the human forearm. *Circulation* 100, 820–825.
- De Caterina, R., Libby, P., Peng, H.B., Thannickal, V.J., Rajavashisth, T.B., Gimbrone, M.A., Jr., Shin, W.S., and Liao, J.K. (1995). Nitric oxide decreases cytokine-induced endothelial activation. Nitric oxide selectively reduces endothelial expression of adhesion molecules and proinflammatory cytokines. *J. Clin. Invest.* 96, 60–68.
- Despres, J.P., Lamarche, B., Mauriege, P., Cantin, B., Dagenais, G.R., Moorjani, S., and Lupien, P.J. (1996). Hyperinsulinemia as an independent risk factor for ischemic heart disease. *N. Engl. J. Med.* 334, 952–957.
- Drummond, G.R., Cai, H., Davis, M.E., Ramasamy, S., and Harrison, D.G. (2000). Transcriptional and posttranscriptional regulation of endothelial nitric oxide synthase expression by hydrogen peroxide. *Circ. Res.* 86, 347–354.
- Du, X., Edelstein, D., Obici, S., Higham, N., Zou, M.H., and Brownlee, M. (2006). Insulin resistance reduces arterial prostacyclin synthase and eNOS activities by increasing endothelial fatty acid oxidation. *J. Clin. Invest.* 116, 1071–1080.
- Duncan, E.R., Crossey, P.A., Walker, S., Anilkumar, N., Poston, L., Douglas, G., Ezzat, V.A., Wheatcroft, S.B., Shah, A.M., and Kearney, M.I. (2008). Effect of endothelium-specific insulin resistance on endothelial function in vivo. *Diabetes* 57, 3307–3314.
- Fernandez-Hernando, C., Ackah, E., Yu, J., Suarez, Y., Murata, T., Iwakiri, Y., Prendergast, J., Miao, R.Q., Birnbaum, M.J., and Sessa, W.C. (2007). Loss of Akt1 leads to severe atherosclerosis and occlusive coronary artery disease. *Cell Metab.* 6, 446–457.
- Geraldes, P., Yagi, K., Ohshiro, Y., He, Z., Maeno, Y., Yamamoto-Hiraoka, J., Rask-Madsen, C., Chung, S.W., Perrella, M.A., and King, G.L. (2008). Selective regulation of heme oxygenase-1 expression and function by insulin through IRS1/phosphoinositide 3-kinase/Akt2 pathway. *J. Biol. Chem.* 283, 34327–34336.

- Gonzalez-Navarro, H., Vinue, A., Vila-Caballer, M., Fortuno, A., Beloqui, O., Zalba, G., Burks, D., Diez, J., and Andres, V. (2008). Molecular mechanisms of atherosclerosis in metabolic syndrome: role of reduced IRS2-dependent signaling. *Arterioscler. Thromb. Vasc. Biol.* 28, 2187–2194.
- Grenett, H.E., Benza, R.L., Fless, G.M., Li, X.N., Davis, G.C., and Booyse, F.M. (1998). Genotype-specific transcriptional regulation of PAI-1 gene by insulin, hypertriglyceridemic VLDL, and Lp(a) in transfected, cultured human endothelial cells. *Arterioscler. Thromb. Vasc. Biol.* 18, 1803–1809.
- Han, S., Liang, C.P., DeVries-Seimon, T., Ranalletta, M., Welch, C.L., Collins-Fletcher, K., Accili, D., Tabas, I., and Tall, A.R. (2006). Macrophage insulin receptor deficiency increases ER stress-induced apoptosis and necrotic core formation in advanced atherosclerotic lesions. *Cell Metab.* 3, 257–266.
- Hartwell, D.W., Mayadas, T.N., Berger, G., Frenette, P.S., Rayburn, H., Hynes, R.O., and Wagner, D.D. (1998). Role of P-selectin cytoplasmic domain in granular targeting in vivo and in early inflammatory responses. *J. Cell Biol.* 143, 1129–1141.
- Hermann, C., Assmus, B., Urbich, C., Zeiher, A.M., and Dimmeler, S. (2000). Insulin-mediated stimulation of protein kinase Akt: a potent survival signaling cascade for endothelial cells. *Arterioscler. Thromb. Vasc. Biol.* 20, 402–409.
- Howard, G., O'Leary, D.H., Zaccaro, D., Haffner, S., Rewers, M., Hamman, R., Selby, J.V., Saad, M.F., Savage, P., and Bergman, R. (1996). Insulin sensitivity and atherosclerosis. The Insulin Resistance Atherosclerosis Study (IRAS) Investigators. *Circulation* 93, 1809–1817.
- Jager, A., van Hinsbergh, V.W., Kostense, P.J., Emeis, J.J., Nijpels, G., Dekker, J.M., Heine, R.J., Bouter, L.M., and Stehouwer, C.D. (2000). Increased levels of soluble vascular cell adhesion molecule 1 are associated with risk of cardiovascular mortality in type 2 diabetes: the Hoorn study. *Diabetes* 49, 485–491.
- Jiang, Z.Y., Lin, Y.W., Clemont, A., Feener, E.P., Hein, K.D., Igarashi, M., Yamauchi, T., White, M.F., and King, G.L. (1999). Characterization of selective resistance to insulin signaling in the vasculature of obese Zucker (fa/fa) rats. *J. Clin. Invest.* 104, 447–457.
- Khan, B.V., Harrison, D.G., Olbrych, M.T., Alexander, R.W., and Medford, R.M. (1996). Nitric oxide regulates vascular cell adhesion molecule 1 gene expression and redox-sensitive transcriptional events in human vascular endothelial cells. *Proc. Natl. Acad. Sci. USA* 93, 9114–9119.
- Kisanuki, Y.Y., Hammer, R.E., Miyazaki, J., Williams, S.C., Richardson, J.A., and Yanagisawa, M. (2001). Tie2-Cre transgenic mice: a new model for endothelial cell-lineage analysis in vivo. *Dev. Biol.* 230, 230–242.
- Kuboki, K., Jiang, Z.Y., Takahara, N., Ha, S.W., Igarashi, M., Yamauchi, T., Feener, E.P., Herbert, T.P., Rhodes, C.J., and King, G.L. (2000). Regulation of endothelial constitutive nitric oxide synthase gene expression in endothelial cells and in vivo: a specific vascular action of insulin. *Circulation* 101, 676–681.
- Kuo, M.S., Kalbfleisch, J.M., Rutherford, P., Gifford-Moore, D., Huang, X.D., Christie, R., Hui, K., Gould, K., and Rekhter, M. (2008). Chemical analysis of atherosclerotic plaque cholesterol combined with histology of the same tissue. *J. Lipid Res.* 49, 1353–1363.
- Lefer, D.J., Jones, S.P., Girod, W.G., Baines, A., Grisham, M.B., Cockrell, A.S., Huang, P.L., and Scalia, R. (1999). Leukocyte-endothelial cell interactions in nitric oxide synthase-deficient mice. *Am. J. Physiol.* 276, H1943–H1950.
- Madonna, R., Pandolfi, A., Massaro, M., Consoli, A., and De Caterina, R. (2004). Insulin enhances vascular cell adhesion molecule-1 expression in human cultured endothelial cells through a pro-atherogenic pathway mediated by p38 mitogen-activated protein-kinase. *Diabetologia* 47, 532–536.
- Murdoch, C., Tazzyman, S., Webster, S., and Lewis, C.E. (2007). Expression of Tie-2 by human monocytes and their responses to angiotensin-2. *J. Immunol.* 178, 7405–7411.
- Nakae, J., Park, B.C., and Accili, D. (1999). Insulin stimulates phosphorylation of the forkhead transcription factor FKHR on serine 253 through a Wortmannin-sensitive pathway. *J. Biol. Chem.* 274, 15982–15985.
- Naruse, K., Rask-Madsen, C., Takahara, N., Ha, S.W., Suzuma, K., Way, K.J., Jacobs, J.R., Clermont, A.C., Ueki, K., Ohshiro, Y., et al. (2006). Activation of vascular protein kinase C-beta inhibits Akt-dependent endothelial nitric oxide synthase function in obesity-associated insulin resistance. *Diabetes* 55, 691–698.
- Nordt, T.K., Sawa, H., Fujii, S., Bode, C., and Sobel, B.E. (1998). Augmentation of arterial endothelial cell expression of the plasminogen activator inhibitor type-1 (PAI-1) gene by proinsulin and insulin in vivo. *J. Mol. Cell. Cardiol.* 30, 1535–1543.
- Okouchi, M., Okayama, N., Shimizu, M., Omi, H., Fukutomi, T., and Itoh, M. (2002). High insulin exacerbates neutrophil-endothelial cell adhesion through endothelial surface expression of intercellular adhesion molecule-1 via activation of protein kinase C and mitogen-activated protein kinase. *Diabetologia* 45, 556–559.
- Oliver, F.J., de la Rubia, G., Feener, E.P., Lee, M.E., Loeken, M.R., Shiba, T., Quertermous, T., and King, G.L. (1991). Stimulation of endothelin-1 gene expression by insulin in endothelial cells. *J. Biol. Chem.* 266, 23251–23256.
- Ouedraogo, R., Gong, Y., Berzins, B., Wu, X., Mahadev, K., Hough, K., Chan, L., Goldstein, B.J., and Scalia, R. (2007). Adiponectin deficiency increases leukocyte-endothelium interactions via upregulation of endothelial cell adhesion molecules in vivo. *J. Clin. Invest.* 117, 1718–1726.
- Rask-Madsen, C., and King, G.L. (2007). Mechanisms of disease: endothelial dysfunction in insulin resistance and diabetes. *Nat. Clin. Pract. Endocrinol. Metab.* 3, 46–56.
- Rask-Madsen, C., Ihlemann, N., Krarup, T., Christiansen, E., Kober, L., Nervil Kistorp, C., and Torp-Pedersen, C. (2001). Insulin therapy improves insulin-stimulated endothelial function in patients with type 2 diabetes and ischemic heart disease. *Diabetes* 50, 2611–2618.
- Reusch, J.E., and Draznin, B.B. (2007). Atherosclerosis in diabetes and insulin resistance. *Diabetes Obes. Metab.* 9, 455–463.
- Sarkar, R., Meinberg, E.G., Stanley, J.C., Gordon, D., and Webb, R.C. (1996). Nitric oxide reversibly inhibits the migration of cultured vascular smooth muscle cells. *Circ. Res.* 78, 225–230.
- Scalia, R., Gooszen, M.E., Jones, S.P., Hoffmeyer, M., Rimmer, D.M., 3rd, Trocha, S.D., Huang, P.L., Smith, M.B., Lefer, A.M., and Lefer, D.J. (2001). Simvastatin exerts both anti-inflammatory and cardioprotective effects in apolipoprotein E-deficient mice. *Circulation* 103, 2598–2603.
- Steinberg, H.O., Brechtel, G., Johnson, A., Fineberg, N., and Baron, A.D. (1994). Insulin-mediated skeletal muscle vasodilation is nitric oxide dependent. A novel action of insulin to increase nitric oxide release. *J. Clin. Invest.* 94, 1172–1179.
- Steinberg, H.O., Chaker, H., Leaming, R., Johnson, A., Brechtel, G., and Baron, A.D. (1996). Obesity/insulin resistance is associated with endothelial dysfunction. Implications for the syndrome of insulin resistance. *J. Clin. Invest.* 97, 2601–2610.
- Symons, J.D., McMillin, S.L., Riehle, C., Tanner, J., Palionyte, M., Hillas, E., Jones, D., Cooksey, R.C., Birnbaum, M.J., McClain, D.A., et al. (2009). Contribution of insulin and Akt1 signaling to endothelial nitric oxide synthase in the regulation of endothelial function and blood pressure. *Circ. Res.* 104, 1085–1094.
- Tang, E.D., Nunez, G., Barr, F.G., and Guan, K.L. (1999). Negative regulation of the forkhead transcription factor FKHR by Akt. *J. Biol. Chem.* 274, 16741–16746.
- Vicent, D., Ilany, J., Kondo, T., Naruse, K., Fisher, S.J., Kisanuki, Y.Y., Bursell, S., Yanagisawa, M., King, G.L., and Kahn, C.R. (2003). The role of endothelial insulin signaling in the regulation of vascular tone and insulin resistance. *J. Clin. Invest.* 111, 1373–1380.
- Zeng, G., and Quon, M.J. (1996). Insulin-stimulated production of nitric oxide is inhibited by wortmannin. Direct measurement in vascular endothelial cells. *J. Clin. Invest.* 98, 894–898.