

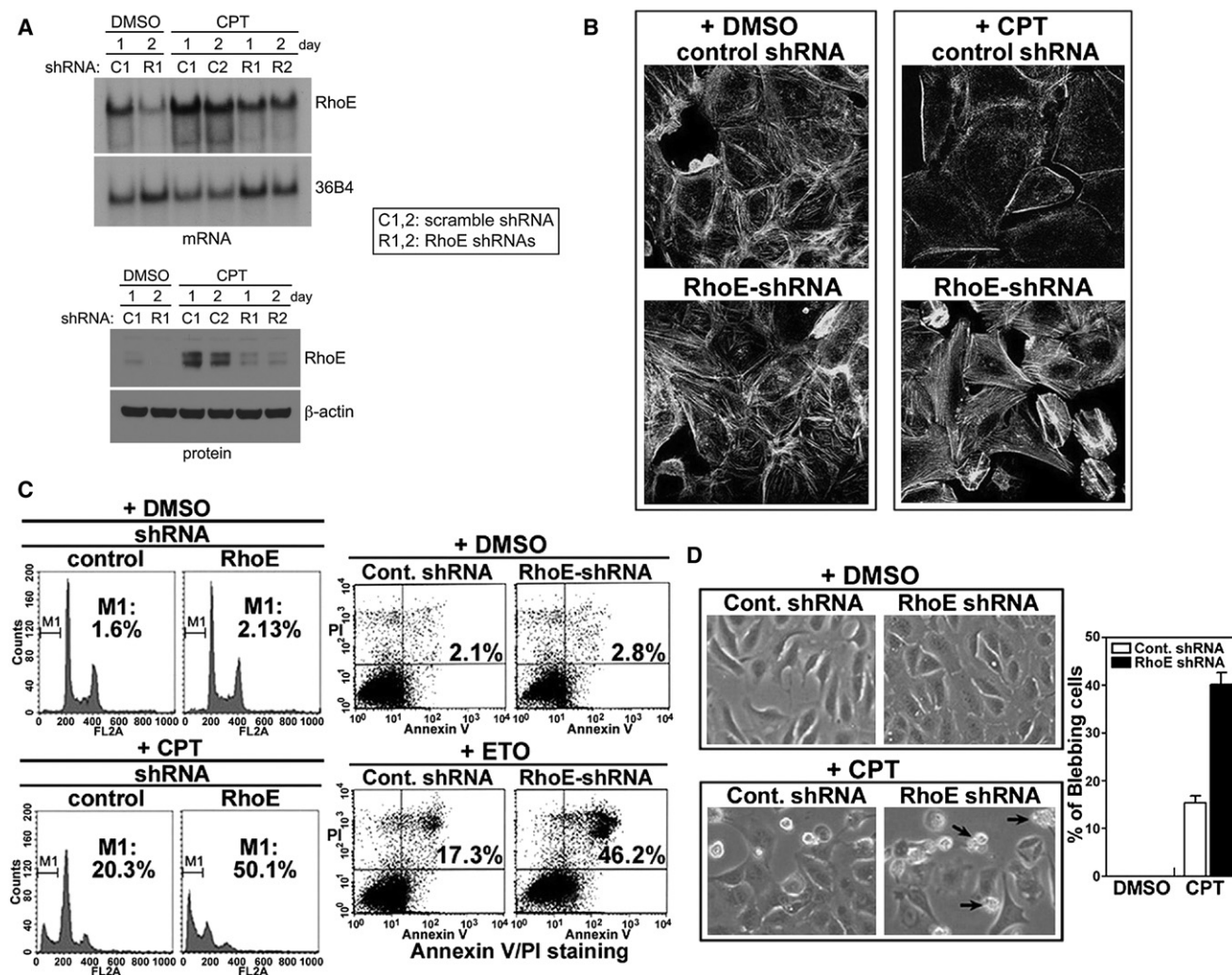
RhoE Is a Pro-Survival p53 Target Gene that Inhibits ROCK I-Mediated Apoptosis in Response to Genotoxic Stress

Pat P. Ongusaha, Hyung-Gu Kim, Sarah A. Boswell, Anne J. Ridley, Channing J. Der, G. Paolo Dotto, Young-Bum Kim, Stuart A. Aaronson, and Sam W. Lee*

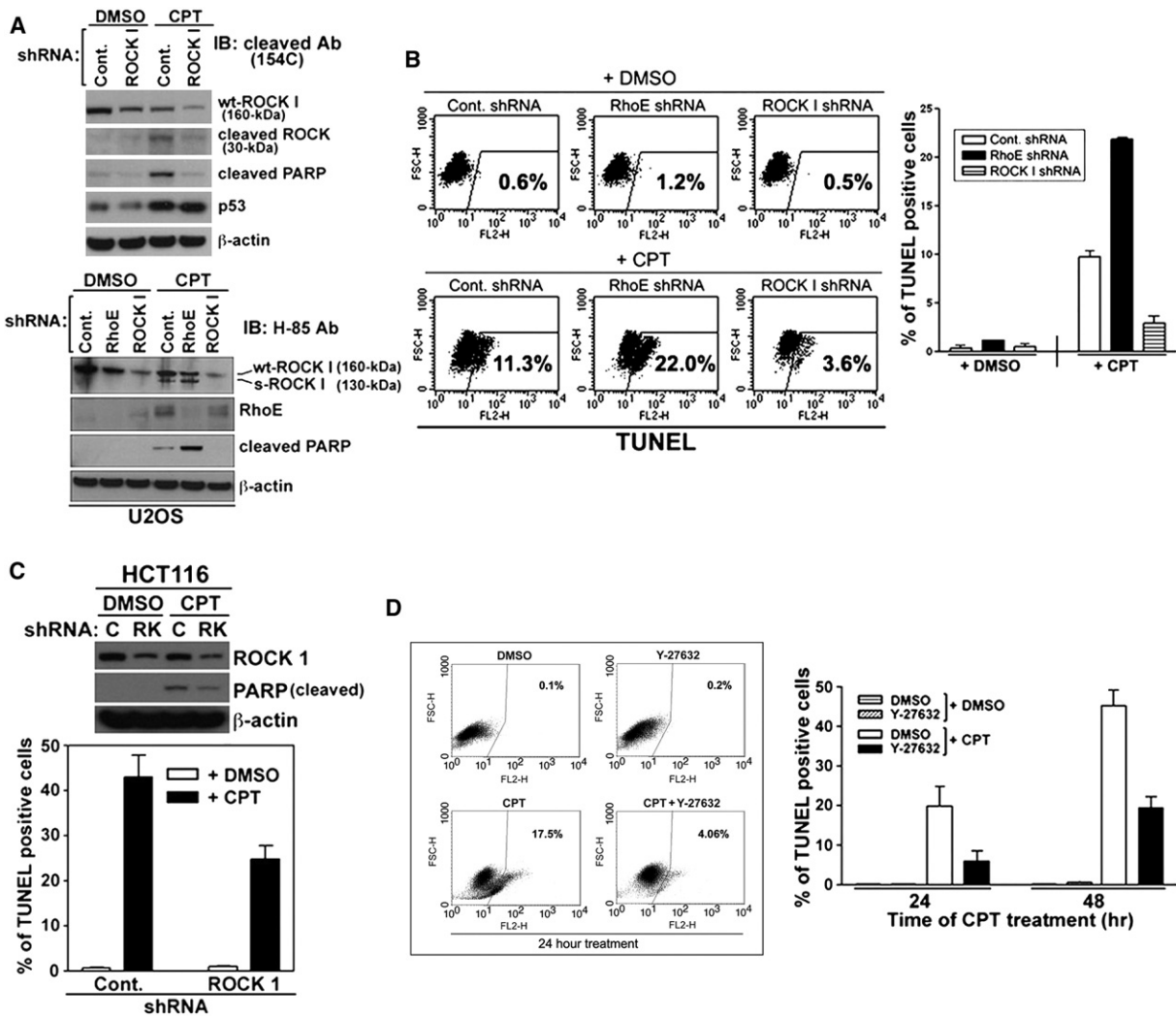
(Current Biology 16, 2466–2472; December 19, 2006)

It has been brought to the authors' attention that incorrect images for Figure 2A and the left panel of Figure 4D were selected during the figure preparations for this article. We thus provide corrected versions of Figures 2 and 4 here.

In the originally published Figure 2A “Expression of RhoE protein and mRNA in RhoE knockdown cells,” the northern blot panel for the loading control (36B4) does not match the experimental conditions described in the figure. It has been pointed out to us that this panel is very similar to Figure 4A in another of our publications (J. Biol. Chem. 279, 38597–38602; September 10, 2004). It is possible that this is an inadvertent duplication, but at this point we regrettably cannot confirm or disprove this. Therefore, the experiments have been repeated, and the new Figure 2A is shown here.



In addition, in the originally published Figure 4D “Effect of ROCK I inhibitor (Y-27632) on CPT-mediated apoptosis,” the panel for DMSO control (0.1% apoptosis) was misplaced in the next panel for Y-27632-treated control (0.3% apoptosis). In order to ensure integrity of the data, the experiments have been repeated, and the results reproducing the original data are shown in the new Figure 4D here.



Neither of these errors affects the results or conclusions of the article. The authors apologize for these errors and any confusion that may have resulted.

*Correspondence: sam.lee@cbr2.mgh.harvard.edu

<http://dx.doi.org/10.1016/j.cub.2012.11.007>