

Report

The Deficiency of PIP₂ 5-Phosphatase in Lowe Syndrome Affects Actin Polymerization

Sharon F. Suchy and Robert L. Nussbaum

National Human Genome Research Institute, Bethesda

Lowe syndrome is a rare X-linked disorder characterized by bilateral congenital cataracts, renal Fanconi syndrome, and mental retardation. Lowe syndrome results from mutations in the *OCRL1* gene, which encodes a phosphatidylinositol 4,5 bisphosphate 5-phosphatase located in the trans-Golgi network. As a first step in identifying the link between *ocr11* deficiency and the clinical disorder, we have identified a reproducible cellular abnormality of the actin cytoskeleton in fibroblasts from patients with Lowe syndrome. The cellular abnormality is characterized by a decrease in long actin stress fibers, enhanced sensitivity to actin depolymerizing agents, and an increase in punctate F-actin staining in a distinctly anomalous distribution in the center of the cell. We also demonstrate an abnormal distribution of two actin-binding proteins, gelsolin and α -actinin, proteins regulated by both PIP₂ and Ca⁺² that would be expected to be altered in Lowe cells. Actin polymerization plays a key role in the formation, maintenance, and proper function of tight junctions and adherens junctions, which have been demonstrated to be critical in renal proximal tubule function, and in the differentiation of the lens. These findings point to a general mechanism to explain how this PIP₂ 5-phosphatase deficiency might produce the Lowe syndrome phenotype.

The oculocerebrorenal syndrome of Lowe (OCRL [MIM 309000]) is a rare X-linked disorder caused by the deficiency of a PIP₂ 5-phosphatase, *ocr11* (Suchy et al. 1995; Zhang et al. 1995). The discovery of the function of *ocr11* and its subcellular localization to the Golgi (Olivos-Glander et al. 1995; Dressman et al. 2000) has not revealed how the enzyme defect leads to the bilateral congenital cataracts, mental retardation, and renal Fanconi syndrome that characterize the disorder. Lowe cells have an elevated concentration of the substrate for *ocr11*, PIP₂ (Zhang et al. 1998). PIP₂ is a phospholipid with a pivotal role in a number of fundamental cell processes, including cell signaling, protein trafficking, and polymerization of the actin cytoskeleton (Berridge and Irvine 1989; Toker 1996; Raucher et al. 2000). We describe here our initial work demonstrating the novel finding that Lowe fibroblasts have abnormalities in the actin cytoskeleton, including decreased actin stress fibers and

altered response to depolymerizing agents. In addition, we report the abnormal distribution of several actin-binding proteins that require PIP₂ for optimal activity. Because of the importance of actin in cell-cell contacts, we expect that this cellular phenotype will help to identify a mechanism for the occurrence of the Lowe syndrome phenotype.

For these studies, we used fibroblast cultures from patients with Lowe syndrome and one control culture (PHL336) that were obtained with informed consent of a parent or guardian (IRB protocol HG0008A and the corresponding committee at Baylor College of Medicine, as described elsewhere [Lin et al. 1997b]). PIP₂ phosphatase activities have been measured on all patients and are <10% of normal activity. Mutations in cell lines were described elsewhere: Lowe line 1 (XL53-01), line 2 (XL49-22), line 4 (LS60), and line 5 (PHL255) (Lin et al. 1997b; Gropman et al. 2000); and Lowe line 6 (PHL467) and line 7 (PHL254) (Lin et al. 1998). Lowe line 3 (PHL243) was from a patient with no detectable OCRL1 mRNA and a deficient PIP₂ 5-phosphatase activity, but the mutation has not yet been identified (authors' unpublished data). Normal cell lines were obtained from the ATCC, cell line numbers CRL 1509, CRL 1513, and CRL 1489. Cells were cultured at 37°C

Received June 21, 2002; accepted for publication August 28, 2002; electronically published November 11, 2002.

Address for correspondence and reprints: Dr. Sharon F. Suchy, National Human Genome Research Institute, National Institutes of Health, Building 49, Room 4A 66, Bethesda, MD 20892-4472. E-mail: suchy@nhgri.nih.gov

© 2002 by The American Society of Human Genetics. All rights reserved. 0002-9297/2002/7106-0017\$15.00

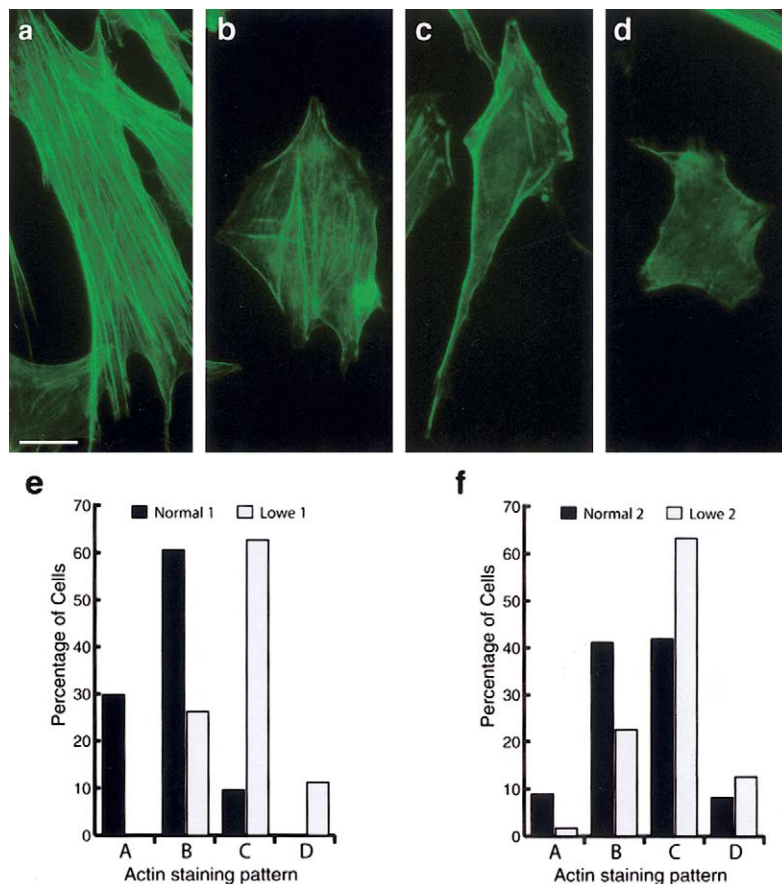


Figure 1 Actin stress-fiber staining is reduced in Lowe fibroblasts. F-actin staining was assessed in Lowe and normal fibroblasts, using Alexa 488 conjugated phalloidin to detect F-actin. Stained cells were classified into one of four types of actin staining: examples of each type (a–d), are shown in normal cells. Scale bar = 0.016 μ m. The histograms (e and f) show the results of two experiments with different Lowe and normal fibroblast lines, in which 100 (e) and 220 cells (f) of each type were scored by an observer masked to the genotype. Lowe syndrome fibroblasts had fewer cells with type a and b staining patterns and more cells with type c and d staining patterns, as compared with control fibroblasts ($\chi^2 = 38.00$, df 7, $P < 10^{-11}$). These results demonstrate that Lowe fibroblasts have a reduced number of long actin stress fibers.

in Dulbecco’s modified Eagle medium with 10% fetal calf serum.

We first assessed the actin stress-fiber composition in Lowe and normal human fibroblasts by immunofluorescence with phalloidin, which binds to filamentous actin (F-actin). Cells were grown on eight-well chamber slides (NalgeneNunc) for 48 h, washed with PBS, fixed and permeabilized with 4% buffered paraformaldehyde and 0.1% Triton X-100 for 5 min, blocked with 5% goat serum (NGS) for 30 min, incubated with Alexa 488 conjugated phalloidin (Molecular Probes) in PBS/1% NGS for 1 h, mounted with Fluormount (ICN), and photographed with a Leica epifluorescence microscope with an Optronics MagnaFire CCD camera. To quantitate the staining, we scored >100 cells of each cell line for actin stress-fiber staining using a method reported elsewhere (Verderame et al. 1980). This method classifies F-actin staining into one of four patterns—a, b, c, and

d—on the basis of the number and length of actin stress fibers: type a cells have longer, more densely packed actin stress fibers, and type d have no detectable stress fibers. Figure 1a–1d shows representative normal cells for each pattern. The results of the scoring, performed blind to the genotype, in two experiments with different Lowe and normal fibroblast lines, are shown in figure 1e and figure 1f. Lowe fibroblasts (lines 2 and 3) had an overall decrease in actin stress-fiber staining with thinner and shorter actin stress fibers that were less tightly packed. The difference between the actin-staining patterns in normal and Lowe cells was significant by χ^2 analysis, with Lowe cells having fewer type a and b staining patterns and more type c and d patterns ($\chi^2 = 38.00$, df 7, $P < 10^{-11}$).

In addition to the reduced stress-fiber staining, Lowe fibroblasts had punctate F-actin staining (fig. 2a), present in 64% of cells, whereas only 1% of normal fibroblasts

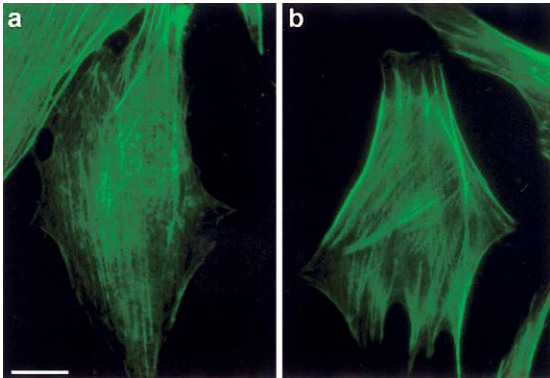


Figure 2 The F-actin staining pattern of Lowe cells shows a punctate pattern in the center of the cell, essentially absent from control cells. Lowe (*a*) and normal (*b*) fibroblasts were stained for F-actin using a fluorescent conjugated phalloidin, as described in figure 1. Scale bar = 0.02 μm .

had such punctate staining (fig. 2*b*). This punctate F-actin staining was more concentrated around the nucleus, as confirmed by staining with 4',6-diamidino-2-phenylindole (DAPI) (data not shown). Since phalloidin binds to F-actin and not to actin monomer, the punctate staining is due to an increase in short-actin filaments in this region.

So that the abnormal actin stress-fiber staining in the Lowe cells could be better understood, normal fibroblasts and two different Lowe fibroblast cultures were treated with the actin depolymerizing agents cytochalasin D and latrunculin A. These agents depolymerize actin primarily by blocking the addition of actin monomers to the ends of actin filaments. Depolymerization results from a net loss of monomers from filament ends; thus the rate of depolymerization is related to the number of filament ends. Fibroblasts were treated with latrunculin A (Molecular Probes) (.24 μmol) and cytochalasin D (1 μmol) (Sigma) for 5–30 min at 37°C, were washed with PBS, and were stained for F-actin as described above. Higher concentrations of these agents were also used, but they resulted in extreme depolymerization of actin filaments such that intact cells were not detectable by immunofluorescence following fixa-

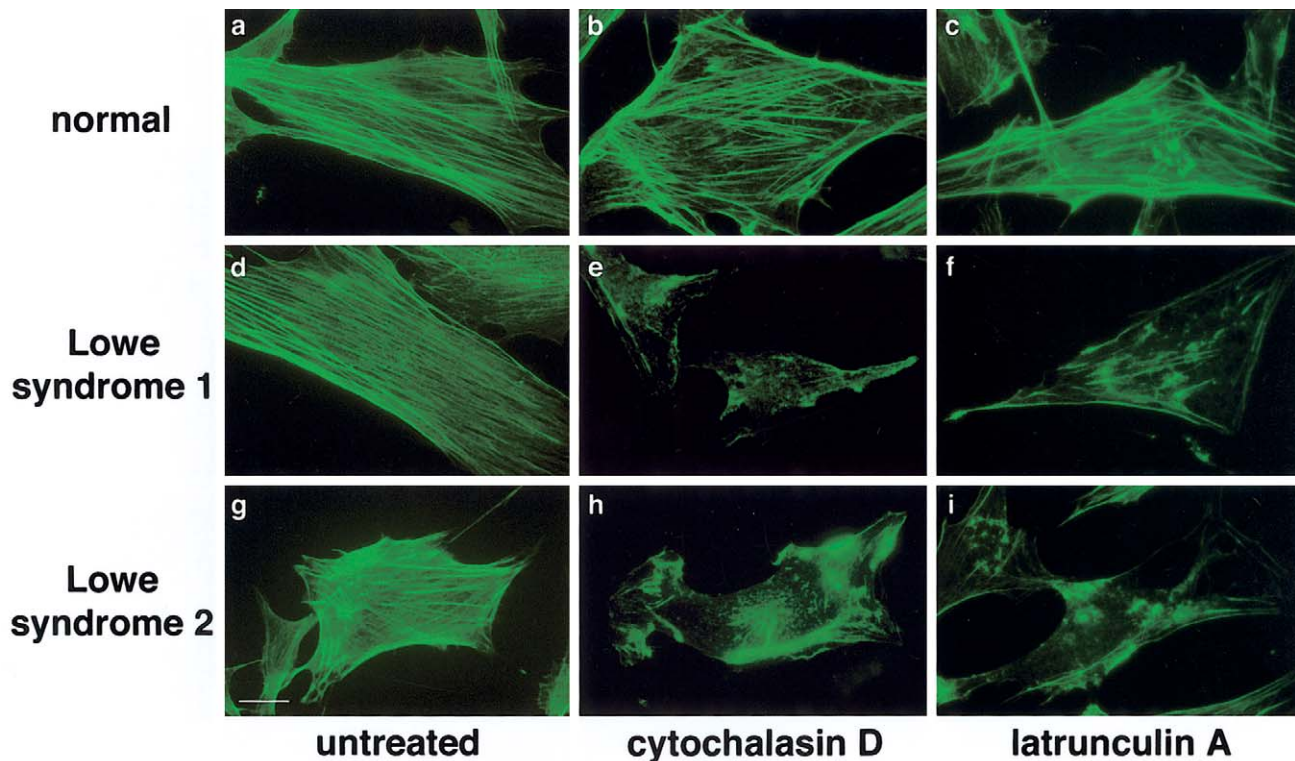


Figure 3 Lowe fibroblasts had a more rapid response than controls to the actin depolymerizing agents, cytochalasin D and latrunculin A. Normal (*a–c*) and two Lowe fibroblast lines (*d–f* and *g–i*) were stained for F-actin using fluorescent conjugated phalloidin, as described in figure 1. Fibroblasts are shown untreated (*a*, *d*, and *g*) or incubated 5 min with 1 μmol cytochalasin D (*b*, *e*, and *h*) or with 0.24 μmol latrunculin A (*c*, *f*, and *i*). Lowe cells (*e*, *f*, *h*, and *i*) showed a greater response to depolymerizing agents than did control cells (*b* and *c*). Scale bar = 0.02 μm .

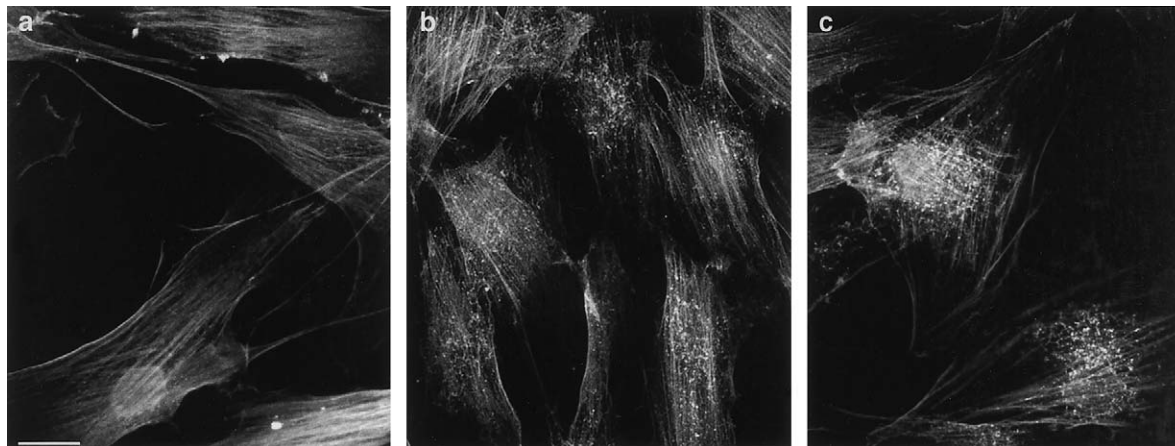


Figure 4 Gelsolin staining is altered in Low fibroblasts. Control and two Low fibroblast cultures were fixed, permeabilized, and immunostained with a monoclonal antibody to gelsolin, followed by an Alexa 594 conjugated secondary antibody. In control cells (*a*), gelsolin staining was distributed along stress fibers. In Low fibroblasts (*b* and *c*), there was an accumulation of punctate staining in the perinuclear area that was virtually absent in normal fibroblasts. Scale bar = 0.02 μm .

tion and permeabilization. The earliest time point at which there was a clear alteration in actin staining in Low cells was 5 min after drug treatment; comparisons of staining between Low and normal cells are therefore shown at the 5-min time point.

Figure 3 shows untreated control (*a*) and Low cells (lines 2 and 4) (*d* and *g*) and control and Low fibroblasts treated with cytochalasin D (*b*, *e*, and *h*) or latrunculin A (*c*, *f*, and *i*). Disruption of the cytoskeleton increased with exposure time in Low and control cells, but depolymerization was more rapid in the Low cells. Treated Low fibroblasts, shown in figure 3 (*e*, *f*, *h*, and *i*), had a reduction in F-actin staining in almost all cells, with fewer long actin filaments and an increased number of short filaments. Conversely, normal cells had only a slight change in stress-fiber staining after the short treatment, and many of the cells showed a staining pattern

indistinguishable from untreated cells (fig. 3*b* and 3*c*). The more rapid response of Low fibroblasts to these agents indicated that Low cells had more filament ends and may have an increase in actin-severing activity.

Gelsolin is a major actin-severing protein regulated by PIP_2 and Ca^{+2} (Janmey and Stossel 1987; Janmey 1994; Lin et al. 1997*a*). Elevated levels of PIP_2 in Low cells (Zhang et al. 1998) may lead to local alterations in Ca^{+2} levels through the activity of phospholipase C, by which PIP_2 is metabolized to inositol trisphosphate and diacylglycerol, leading to the release of calcium from intracellular stores. Consequently, we investigated whether Low cells had a change in the distribution of gelsolin by immunofluorescence (fig. 4), performed essentially as for the actin staining above, except that the cells were incubated with gelsolin monoclonal antibody (Sigma) in PBS with 1% NGS for 1 h, followed by a 1-h incubation

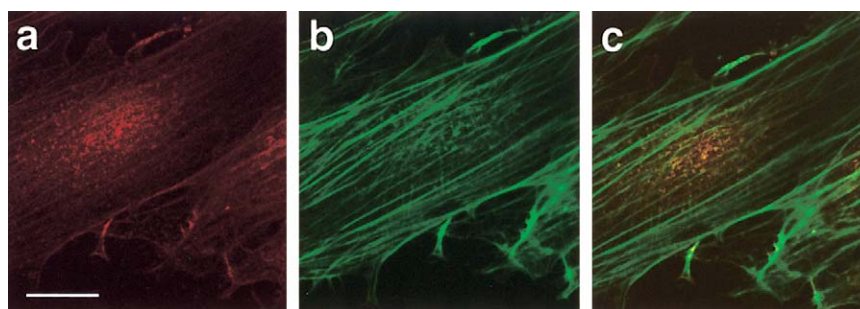


Figure 5 Punctate gelsolin staining in Low fibroblasts coincides with the punctate F-actin filament staining. Low fibroblasts were fixed and incubated with a monoclonal antibody to gelsolin followed by an Alexa 594 conjugated anti-rabbit secondary antibody, along with Alexa 488 conjugated phalloidin. Fluorescence was visualized by confocal microscopy. The punctate gelsolin staining (*a*) and punctate F-actin staining (*b*) coincided, as shown in the merged image (*c*). Scale bar = 0.02 μm .

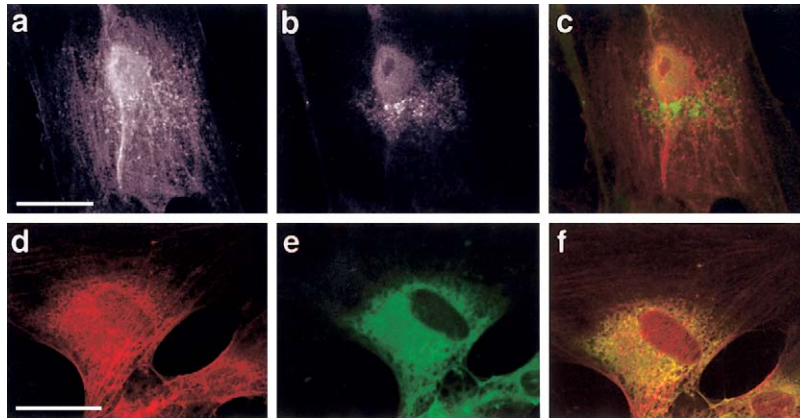


Figure 6 Distribution of the punctate gelsolin staining does not colocalize with the TGN but does overlap with that of an ER marker. Lowe fibroblasts (*a–c*) were fixed and incubated with a monoclonal antibody to gelsolin and a polyclonal antibody to the mannose 6-phosphate receptor (M6-PR), followed by an Alexa 594 conjugated anti-mouse secondary antibody and an Alexa 488 conjugated anti-rabbit secondary antibody. The gelsolin staining (*a*) did not overlap with that of the TGN marker, M6-PR (*b*), as seen in the merged image (*c*). Scale bar = 0.06 μm . The localization of the punctate gelsolin staining was further studied (*d–f*) by double-labeling Lowe fibroblasts, as described above, with anti-gelsolin antibody and with Alexa 488 conjugated concanavalin A, a probe for the endoplasmic reticulum. Fluorescence was visualized by confocal microscopy (*d–f*), scale bar = 0.063 μm . The gelsolin staining (*d*) and the concanavalin A staining (*e*) partially overlapped, as shown in the merged image (*f*).

with an Alexa 594-anti-mouse IgG (Molecular Probes). In control cells, gelsolin staining was present along stress fibers and at the plasma membrane, as reported elsewhere, along with a diffuse nuclear staining (Dissmann and Hinssen 1994) (fig. 4*a*). In Lowe fibroblasts (lines 2 and 5), in addition to the stress-fiber staining, there was a redistribution of gelsolin staining in a punctate pattern in the center of the cell (fig. 4*b*, and 4*c*). This punctate staining was virtually absent from normal fibroblasts. We have confirmed these observations in three additional Lowe fibroblast lines (data not shown). The fact that the same punctate gelsolin staining was observed in the six lines from patients with Lowe syndrome that were tested, including three with missense mutations that abolished PIP_2 5-phosphatase activity but had *ocrl1* protein detectable by western analysis (Lin et al. 1997*b*, 1998; Gropman et al. 2000), indicates that the PIP_2 5-phosphatase activity is responsible for the actin abnormality reported here.

Gelsolin not only severs actin filaments but also caps filament ends after severing. To assess whether the punctate staining observed in Lowe fibroblasts represented free gelsolin or gelsolin bound to short actin filaments, we double-labeled Lowe fibroblasts (line 5) using phalloidin and anti-gelsolin antibody and photographed cells with a Zeiss Axiovert 100 confocal microscope. The punctate gelsolin staining (fig. 5*a*) coincided with punctate F-actin staining (fig. 5*b*), in merged images (fig. 5*c*), indicating that, in this region, the short actin filaments were associated with and possibly capped by gelsolin.

This points to the possibility that there is a localized increase in gelsolin activity in Lowe fibroblasts.

To determine whether the punctate gelsolin staining in Lowe cells overlapped with the trans-Golgi network (TGN), where *ocrl1* is localized in normal cells, we performed double-label immunofluorescence in Lowe cells with gelsolin antibody and a polyclonal antibody to the TGN-localized mannose 6-phosphate receptor (M6-PR), kindly provided by Dr. J. Paul Luzio (Cambridge University) (fig. 6*a–c*). M6-PR localized to a condensed region in the perinuclear area of the cell (line 5) (fig. 6*b*), whereas the punctate gelsolin staining (fig. 6*a*) appeared in a broader area around the nucleus. In merged images, it was clear that the punctate gelsolin staining was completely excluded from the TGN identified by the M6-PR antibody (fig. 6*c*). Because of the broader cytoplasmic distribution of the punctate gelsolin staining, we double-labeled the cells with an antibody to gelsolin (fig. 6*d*) (line 6) and Alexa 488 concanavalin A as a probe for the endoplasmic reticulum (ER) (fig. 6*e*) (Miralles et al. 1993; Ofner and Hooper 2002). By confocal imaging, we saw a clear overlap of the staining pattern in the merged image (*yellow staining*, fig. 6*f*), demonstrating that the punctate gelsolin staining overlapped the ER.

To confirm that *ocrl1* expression was responsible for the punctate gelsolin staining, Lowe fibroblasts that had previously shown to have no detectable OCRL1 mRNA (Olivos-Glander et al. 1995) were transfected with OCRL1 cDNA in a mammalian expression vector. Fi-

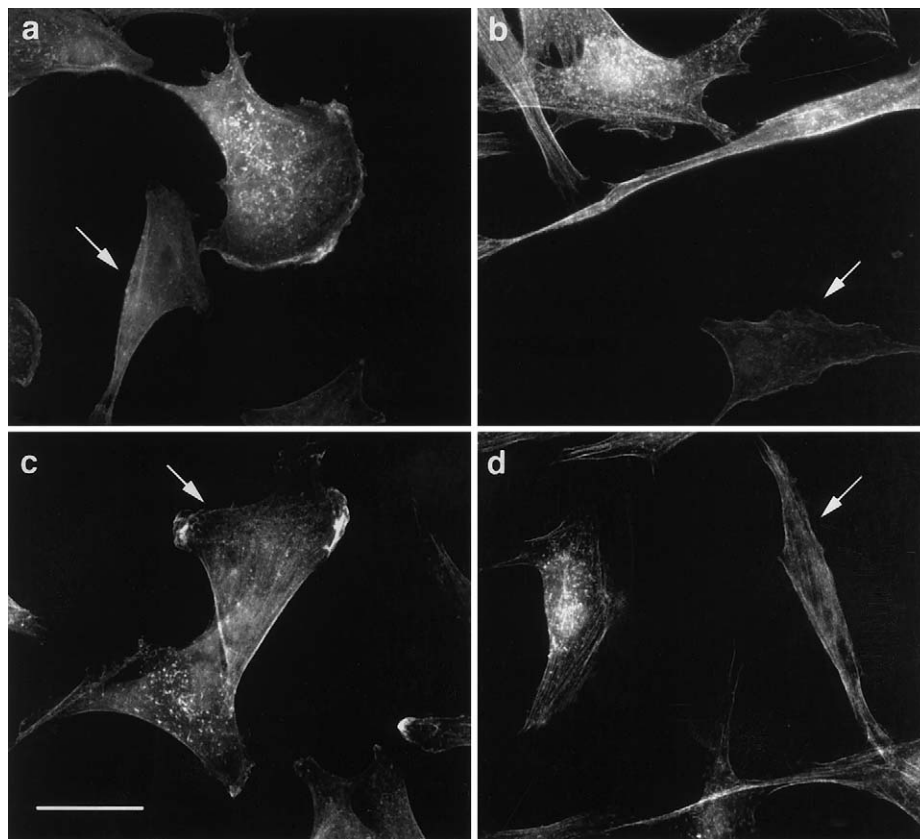


Figure 7 Lowe cells transfected with *ocr1* cDNA are lacking the punctate gelsolin staining seen in most untransfected fibroblasts. Images show gelsolin staining of transfected (*arrows*) and untransfected cells. Following transfection, cells were plated, fixed, and double-labeled with an antibody to *ocr1*, to identify transfected cells, and with gelsolin antibody. Scale bar = 0.05 μm .

broblasts from patients with Lowe syndrome (7×10^5 cells) were transfected with 2 μg of OCRL1 cDNA (Olivos-Glander et al. 1995) with the Amaxa Biosystems NHDF-Neo Nucleofactor kit using the manufacturer's optimized protocol for human fibroblasts. Cells were plated immediately after transfection onto polylysine-coated glass slides (Nunc), and immunofluorescence was performed after 24–48 h (as described above) with anti-gelsolin monoclonal antibody and *ocr1* polyclonal antibody.

Transfected Lowe fibroblasts were scored for expression of *ocr1*. Transfection efficiency in different experiments, with two different Lowe cell lines (line 1 and line 2), was estimated by comparing the percentage of *ocr1* stained cells to total cells in several fields, which ranged from 1% to 12%, although, in most experiments, efficiency was 1%–2%. This efficiency is significantly lower than that reported by the manufacturer. According to the manufacturer, their transfection efficiency experiments were done with first passage newborn dermal fibroblasts and might be diminished considerably by the

age of the donor, the passage number of the cell line, the length of time the cell line had been frozen, and the plasmid used in transfections. Although the punctate staining was present in the majority of untransfected fibroblasts (fig. 7*a–7d*), as described above, no transfected cells (fig. 7, *arrows*) had punctate staining (fig. 7*a–7d*). In the experiment shown here, both transfected and untransfected cells appeared to have reduced stress-fiber staining.

Additional actin-binding proteins were studied in normal and Lowe fibroblasts: profilin, cofilin, vinculin, villin, and α -actinin. Of these, only α -actinin was found to have an abnormal staining pattern in Lowe fibroblasts. For α -actinin immunofluorescence, cells were fixed for 5 min with cold (-20°C) methanol, washed, blocked, and incubated with primary and secondary antibodies (as described above) using α -actinin monoclonal antibody (Sigma), followed by Alexa 488–anti-mouse IgM. Cells of both genotypes displayed an even distribution of the α -actinin protein along actin stress fibers and concentrated at focal adhesions and at the plasma

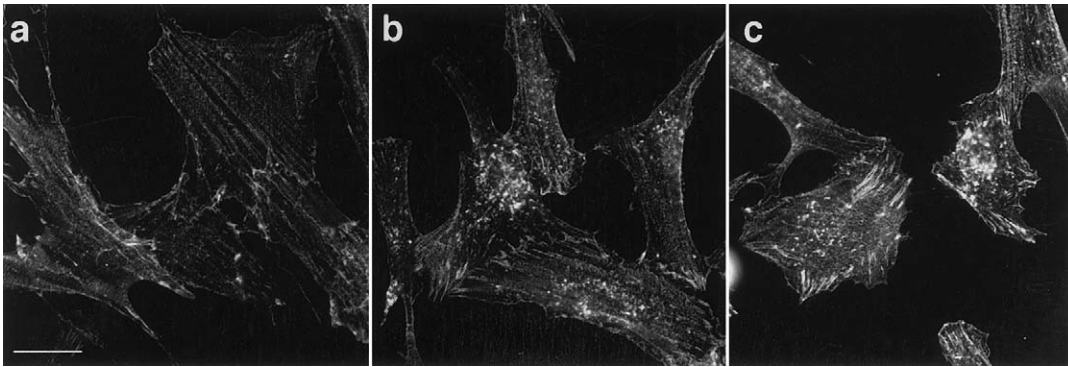


Figure 8 Immunofluorescence staining of α -actinin is altered in Lowe fibroblasts. Control and two Lowe fibroblast cultures were fixed, permeabilized, and immunostained with a monoclonal antibody to α -actinin followed by an Alexa 488 conjugated secondary antibody. In control cells (a), α -actinin staining was present at focal adhesions and along stress fibers. In Lowe fibroblasts (b and c), there was an accumulation of punctate staining in the perinuclear area that was virtually absent in normal fibroblasts. Scale bar = 0.05 μ m.

membrane (fig. 8a–8c), as reported elsewhere (Edlund et al. 2001). However, in addition to this staining, Lowe fibroblasts showed a distinctly abnormal accumulation of punctate staining in the center of the cell in ~61% of Lowe fibroblasts (fig. 8b and 8c) (lines 2 and 1), whereas only 4% of normal fibroblasts had similar staining. It is interesting that α -actinin activity, like that of gelsolin, is dependent upon PIP_2 and Ca^{+2} . Double-label immunofluorescence studies to determine whether the punctate α -actinin and gelsolin staining overlapped were unsuccessful, since the α -actinin and the gelsolin antibodies were both mouse monoclonals, and the optimum fixation conditions for the detection of α -actinin staining were not compatible with detection of gelsolin staining.

We found alterations in the actin cytoskeleton in Lowe fibroblasts: a reduction in number and length of actin stress fibers and an altered distribution of two actin-binding proteins, gelsolin, and α -actinin. These abnormalities are a consequence of elevated PIP_2 levels (and possibly of local increases in Ca^{+2}) that may be present in particular subcellular domains. This novel cellular phenotype is likely to be a contributory cause of the clinical phenotype in Lowe syndrome. Further study will be necessary to determine the precise relationship between the cellular and clinical phenotypes and why only certain tissues are affected. Certain cell types or subcellular structures may be more susceptible to chronic abnormalities in actin or actin-binding proteins. Two of the major defects in Lowe syndrome appear to be in renal and lens epithelium, leading to renal tubular dysfunction and a failure of the primary lens fiber cell differentiation (Nussbaum and Suchy 2001). It has been shown that epithelial cell adhesion requires interaction of actin with actin-binding proteins such as E-cadherin and α -catenin (Adams et al. 1998; Vasioukhin et al. 2000), and that these cell-cell contacts fail to form when

actin polymerization is disrupted (Vasioukhin et al. 2000). Actin polymerization plays a key role in the formation, maintenance, and proper functioning of tight junctions in cultured kidney epithelium (Stevenson and Begg 1994; Wittchen et al. 1999) that are required for normal barrier function of the renal proximal tubule cells (Cerejido et al. 1993). Remodeling of the cytoskeleton has also been demonstrated to be essential for lens differentiation (Lee et al. 2000), and the lens fails to develop properly when F-actin and cell-adhesion molecules fail to organize at membranes (Ferreira-Cornwell et al. 2000).

We hypothesize that Lowe syndrome may result from a chronic deficiency of a PIP_2 5-phosphatase, localized to the TGN (Dressman et al. 2000), with a consequent elevation of PIP_2 that can effect the actin cytoskeleton and, in turn, the formation and maintenance of certain cell-cell contacts. The identification of this cellular phenotype provides a model system to test possible interventions in the disease process and perhaps to interrupt pathogenesis in this disorder.

Acknowledgments

The authors thank Dr. Amalia Dutra for help with the confocal microscopy and Anna Sirota for her technical assistance.

Electronic-Database Information

Accession numbers and URLs for data presented herein are as follows:

Online Mendelian Inheritance in Man (OMIM), <http://www.ncbi.nlm.nih.gov/Omim/> (for OCRL [MIM 309000])

References

- Adams CL, Chen YT, Smith SJ, Nelson WJ (1998) Mechanisms of epithelial cell-cell adhesion and cell compact revealed by high-resolution tracking of E-cadherin-green fluorescent protein. *J Cell Biol* 142:1105–1119
- Berridge MJ, Irvine RF (1989) Inositol phosphates and cell signaling. *Nature* 341:197–205
- Cerejido M, Gonzalez-Mariscal L, Contreras RG, Gallardo JM, Garcavillegas R, Valades J (1993) The making of a tight junction. *J Cell Sci Suppl* 17:127–132
- Dissmann E, Hinssen H (1994) Immunocytochemical localization of gelsolin in fibroblasts, myogenic cells, and isolated myofibrils. *Eur J Cell Biol* 63:336–344
- Dressman MA, Olivos-Glander IM, Nussbaum RL, Suchy SF (2000) Ocrl1, a PtdIns(4,5)P₂ 5-phosphatase, is localized to the *trans*-Golgi network of fibroblasts and epithelial cells. *J Histochem Cytochem* 48:179–189
- Edlund M, Lotano MA, Otey CA (2001) Dynamics of alpha-actinin in focal adhesions and stress fibers visualized with alpha-actinin-green fluorescent protein. *Cell Motil Cytoskeleton* 48:190–200
- Ferreira-Cornwell MC, Venezia RW, Grunwald GB, Menko AS (2000) N-cadherin function is required for differentiation-dependent cytoskeletal reorganization in lens cells in vitro. *Exp Cell Res* 256:237–247
- Gropman A, Levin S, Yao L, Lin T, Suchy SF, Sabnis S, Hadley D, Nussbaum RL (2000) Unusual renal features of Lowe syndrome in a mildly affected boy. *Am J Med Genet* 95:461–466
- Janmey PA (1994) Phosphoinositides and calcium as regulators of cellular actin assembly and disassembly. *Annu Rev Physiol* 56:169–191
- Janmey PA, Stossel TP (1987) Modulation of gelsolin function by phosphatidylinositol 4,5-bisphosphate. *Nature* 325:362–364
- Lee A, Fischer RS, Fowler VM (2000) Stabilization and remodeling of the membrane skeleton during lens fiber cell differentiation and maturation. *Dev Dyn* 217:257–270
- Lin KM, Wenegieme E, Lu PJ, Chen CS, Yin HL (1997a) Gelsolin binding to phosphatidylinositol 4,5-bisphosphate is modulated by calcium and pH. *J Biol Chem* 272:20443–20450
- Lin T, Orrison BM, Leahey A, Suchy SF, Bernard DJ, Lewis RA, Nussbaum RL (1997b) Spectrum of mutations in the OCRL1 gene in the Lowe Oculocerebrorenal syndrome. *Am J Hum Genet* 60:1384–1388
- Lin T, Orrison BM, Suchy SF, Lewis RA, Nussbaum RL (1998) Mutations are not uniformly distributed throughout the OCRL1 gene in Lowe syndrome patients. *Mol Genet Metab* 64:58–61
- Miralles F, Langa F, Maxo A, Escribano MJ (1993) Retention of the fetoacinar pancreatic (FAP) protein to the endoplasmic-reticulum of tumor cells. *Eur J Cell Biol* 60:115–121
- Nussbaum RL, Suchy SF (2001) Lowe syndrome. In: Scriver CR, Beaudet AL, Sly WS, Valle D (eds) *Metabolic and molecular basis of inherited diseases*, vol IV. McGraw-Hill, New York, pp 6257–6266
- Ofner LD, Hooper NM (2002) The C-terminal domain, but not the interchain disulphide, is required for the activity and intracellular trafficking of aminopeptidase A. *Biochem J* 362:191–197
- Olivos-Glander IM, Janne PA, Nussbaum RL (1995) The oculocerebrorenal syndrome gene product is a 105-kD protein localized to the Golgi complex. *Am J Hum Genet* 57:817–823
- Raucher D, Stauffer T, Chen W, Shen K, Guo S, York JD, Sheetz MP, Meyer T (2000) Phosphatidylinositol 4,5-bisphosphate functions as a second messenger that regulates cytoskeleton-plasma membrane adhesion. *Cell* 100:221–228
- Stevenson BR, Begg DA (1994) Concentration-dependent effects of cytochalasin-D on tight junctions and actin-filaments in MDCK epithelial-cells. *J Cell Sci* 107:367–375
- Suchy SF, Olivos-Glander IM, Nussbaum RL (1995) Lowe syndrome, a deficiency of a phosphatidylinositol 4,5 bisphosphate 5-phosphatase in the Golgi apparatus. *Hum Mol Genet* 4:2245–2250
- Toker A (1998) The synthesis and cellular roles of phosphatidylinositol 4,5-bisphosphate. *Curr Opin Cell Biol* 10:254–261
- Vasioukhin V, Bauer C, Yin M, Fuchs E (2000) Directed actin polymerization is the driving force for epithelial cell-cell adhesion. *Cell* 100:209–219
- Verderame M, Alcorta D, Egnor M, Smith K, Pollack R (1980) Cytoskeletal F-actin patterns quantitated with fluorescein isothiocyanate-phalloidin in normal and transformed cells. *Proc Natl Acad Sci USA* 77:6624–6628
- Wittchen ES, Haskins J, Stevenson BR (1999) Protein interactions at the tight junction-actin has multiple binding partners and ZO-1 forms independent complexes with ZO-2 and ZO-3. *J Biol Chem* 274:35179–35186
- Zhang X, Jefferson AB, Auethavekiat V, Majerus PW (1995) The protein deficient in Lowe syndrome is a phosphatidylinositol 4,5-bisphosphate 5-phosphatase. *Proc Natl Acad Sci USA* 92:4853–4856
- Zhang X, Hartz PA, Philip E, Racusen LC, Majerus PW (1998) Cell lines from kidney proximal tubules of a patient with Lowe syndrome lack OCRL inositol polyphosphate 5-phosphatase and accumulate phosphatidylinositol 4,5-bisphosphate. *J Biol Chem* 273:1574–1582