



ELSEVIER

Contents lists available at ScienceDirect

Leukemia Research Reports

journal homepage: www.elsevier.com/locate/lrrHuman endogenous retrovirus *np9* gene is over expressed in chronic lymphocytic leukemia patientsSabrina Fischer^a, Natalia Echeverría^a, Gonzalo Moratorio^{a,c}, Ana Inés Landoni^d, Guillermo Dighiero^b, Juan Cristina^a, Pablo Oppezzo^b, Pilar Moreno^{a,b,*}^a Laboratory of Molecular Virology, Centro de Investigaciones Nucleares, Facultad de Ciencias, Universidad de la República, Montevideo, Uruguay^b Protein Recombinant Unit, Institut Pasteur, Montevideo, Uruguay^c Department of Virology, Institut Pasteur, Paris, France^d Service of Hematology and Bone Marrow Transplantation, Hospital Maciel, Montevideo, Uruguay

ARTICLE INFO

Article history:

Received 17 March 2014

Received in revised form

6 June 2014

Accepted 24 June 2014

Available online 25 July 2014

Keywords:

HERVs

np9

CLL

ABSTRACT

The human genome contains a large number of endogenous retroviruses (HERVs). Their reactivation has frequently been observed in patients with cancer. Considering their role in the carcinogenesis process, we aimed to study the possible relationship between HERVs gene expression and Chronic Lymphocytic Leukemia (CLL). We focused on two viral genes *gag* and *np9*, the latter presumably an oncogene. We found that the transcriptional activity of HERV-K *np9* gene was greater in CLL patients than in healthy donors. However, *gag* expression was not significantly increased.

These findings suggest a noteworthy relationship between CLL disease and HERV-K *np9* expression.

© 2014 The Authors. Published by Elsevier Ltd. This is an open access article under the CC BY-NC-ND license (<http://creativecommons.org/licenses/by-nc-nd/3.0/>).

1. Introduction

Human endogenous retroviruses (HERVs) are genetic remnants of ancient retroviral infections of the germ line produced during primate evolution which are now transmitted vertically. To date, approximately 8% of the human genome is composed of such retroviral sequences [1]. Most HERVs are dysfunctional due to numerous mutations and deletions. However, those belonging to HERV-K family, contain sequences which are likely to be transcribed.

Many of these HERVs are transcribed and translated under normal physiological conditions. Nevertheless, reactivation of HERVs has frequently been observed in a variety of human tumors suggesting their potential to contribute to malignant progression [2]. Specifically during hemato-oncological processes, several studies have reported the presence of antibodies against HERV-K, over-expression of HERV genes and also the presence of retroviral particles in primary leukemia cells [2]. In addition, *np9*, a small regulatory gene encoded by HERV-K, has a role as a potent viral oncogene and

as a critical molecular switch of multiple signaling pathways regulating the growth of certain human myeloid and lymphoblastic leukemia cells [3].

CLL is the most common form of leukemia in Western countries and mainly affects elderly individuals. It follows an extremely variable course, with survival ranging from months to decades. Available treatments often induce disease remission, but almost all patients will relapse and there is a consensus that CLL remains incurable. To date, both an unmutated (UM) profile of immunoglobulin (Ig) VH genes as well as the presence of genetic lesions at chromosome 17p13, or at 11q23 constitute poor prognosis indicators [4]. Several studies have begun to shed light on the nature of genetic predisposition of CLL but the basis of this disorder remains unknown [4,5]. Studies that screened for the presence of a virus expressed at the RNA level in human CLL, by using massive sequencing technology, gave no evidence of a putative exogenous viral candidate as a cause for this disease [6].

In order to gain insight into the role of endogenous retrovirus in leukemogenesis, we studied *np9* and *gag* gene expression of HERV-K in Chronic Lymphocytic Leukemia (CLL) patients compared to healthy donors.

The results revealed that 70% of CLL patients express *np9* gene at least 5 times higher than healthy donors, and 33% express *gag* gene twice as high as normal donors. These findings suggest a significant relationship between CLL disease and HERV-K *np9* (and possibly *gag*) expression.

* Corresponding author at: Laboratory of Molecular Virology, Centro de Investigaciones Nucleares, Facultad de Ciencias, Universidad de la República, Montevideo, Uruguay

E-mail addresses: sfischer@cin.edu.uy (S. Fischer), necheverria@cin.edu.uy (N. Echeverría), gonzamoratorio@gmail.com (G. Moratorio), ailandoni@yahoo.com (A.I. Landoni), dighiero@pasteur.edu.uy (G. Dighiero), cristina@cin.edu.uy (J. Cristina), poppezzo@pasteur.edu.uy (P. Oppezzo), pmoreno@cin.edu.uy (P. Moreno).

2. Materials and methods

Peripheral blood samples were obtained from 25 patients with a typical diagnosis of B cell-CLL (mean age: 64 years). The control group consisted of 6 healthy volunteers. All patients were followed at the Hospital Maciel from Montevideo and provided an informed consent in accordance with national ethical regulations and the Declaration of Helsinki.

The peripheral blood mononuclear cells (PBMC) were isolated by centrifugation on Ficoll-Hypaque (GE Healthcare). RNA was isolated from 1 to 5×10^6 cells using the Trizol RNA Isolation Protocol. To minimize genomic DNA contamination each RNA sample was treated with DNA-free™ Kit (Ambion, USA). cDNA synthesis was performed as described previously [7]. Negative controls in which reverse transcriptase was omitted were performed to confirm the exclusion of residual genomic DNA contamination.

For gene expression analyses of *np9* and *gag* genes, we used the KAPA SYBR FAST qPCR Kit Master Mix ($2 \times$) Universal (Kapa Biosystems) and a Corbett Rotor-Gene 6000. HERVs-K primer sequences of *np9* and *gag* were previously described [2,8]. The cellular *c-myc* expression level in CLL patients was also assessed with respect to healthy donors. The results of HERV-K and *c-myc* expression were normalized to the level of glyceraldehyde 3-phosphate dehydrogenase (GAPDH) transcription using the following primers: forward: 5'-GGTGCTGAGTATGTCGTGGA-3' and reverse: 5'-ATGCCAGTGAGCTCCCGTT-3'.

PCR cycling conditions for *np9*, *c-myc* and GAPDH amplification were: 3 min at 95 °C and 40 cycles at 95 °C for 3 s, 58 °C for 20 s and 72 °C for 20 s. For HERV-K *gag* specific amplification, cycling conditions were: 95 °C for 10 min, 40 cycles at 95 °C for 15 s and 60 °C for 1 min. The threshold cycle value (Ct), computed for each of these genes as the average of 2 determinations was used to measure the amount of PCR product. The mean ΔCt was calculated by subtracting the mean Ct of duplicated *np9* and *gag* measurements from the mean Ct of duplicated GAPDH measurements. The $\Delta\Delta Ct$ values were calculated with the mean ΔCt of the 6 healthy donors. The expression factor difference was calculated by the formula $2^{-\Delta\Delta Ct}$. Thus, the calculated relative expression provides data on how much *np9* and *gag* gene expression differs from that found in healthy donors.

3. Results and discussion

In this study, the *np9* and *gag* mRNA expression was established for 25 patients with CLL (Fig. 1). We found that the transcriptional activity of HERV-K *np9* gene in CLL patients was higher than in PBMCs from healthy donors. The results revealed that 18 out of 25 CLL patients (70% of CLL patients) express *np9* transcripts five-fold higher than in normal PBMCs (Fig. 1A). On the other hand when we analyzed *gag* gene expression we noted that just 33% of CLL patients expressed elevated *gag* levels (two-fold) compared to healthy people (Fig. 1B). Both in *np9* and *gag* analysis, a wide variability of expression among patients was observed, with no significant difference between mutated and unmutated subgroups ($p=0.65$ and 0.09 respectively) (see Fig. 1).

A previous study regarding HERV-K *gag* transcriptional activity [2] reported five to eight-fold higher gene expression in 3 B-CLL patients analyzed. However, our study on a large number of B-CLL patients showed that only 2 out of 25 patients exhibited elevated *gag* expression (5-fold greater than healthy donors) (see Fig. 1B).

The overexpression of HERV-K Np9 protein has been observed in a variety of leukemia cell lines and primary cultures of leukemia cells [3]. It is known that the interaction of Np9 protein abrogates the function of the promyelocytic leukemia zinc finger (PLZF) as a

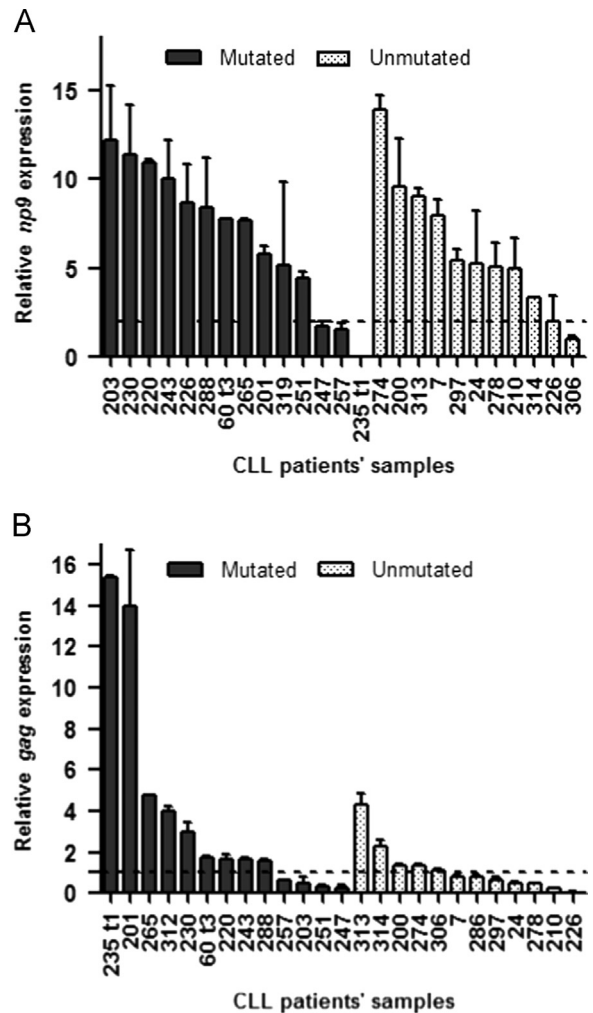


Fig. 1. *np9* and *gag* mRNA relative expression levels in CLL patients with mutated and unmutated profile in their immunoglobulin Vh genes. (A) Relative expression of HERV-K *np9* gene with respect to healthy donors. The dotted line represents the maximum value of *np9* expression from healthy donors as a negative calibrator. (B) Relative expression of HERV-K *gag* gene with respect to healthy donors. The dotted line represents the maximum value of *gag* expression from healthy donors as a negative calibrator. The vertical error bars represent the maximum value of each CLL patient's sample measured by duplicated.

transcriptional repressor of the *c-myc* proto-oncogene promoter, resulting in the overproduction of this transcription factor and the induction of cell proliferation [9]. Studies of Palacios et al. [10] in CLL report that the proliferative behavior of a small CLL B-cells subpopulation could be related to expression of *c-myc* oncogene. Unfortunately our studies on *c-myc* gene expression levels in CLL patients with high and low *np9* mRNA expressions showed no significant differences ($p=0.19$) in the expression of *c-myc* between these groups, nor with normal PBMCs (Fig. 2). The differences in these results could be explained by the distinct CLL subpopulations analyzed in each work. Other plausible explanation is that *np9* mRNA might not be translated or alternatively, that over expression of *c-myc* through a putative Np9 PLZF pathway may be transient [9].

To our knowledge, this is the first study of HERV-K *np9* mRNA expression in B cell-CLL showing that this molecule is over-expressed in the peripheral blood of CLL patients compared with healthy donors. More studies are needed to evaluate the potential impact of *np9* expression on CLL and its role in the regulation of signaling pathways involved in carcinogenesis.

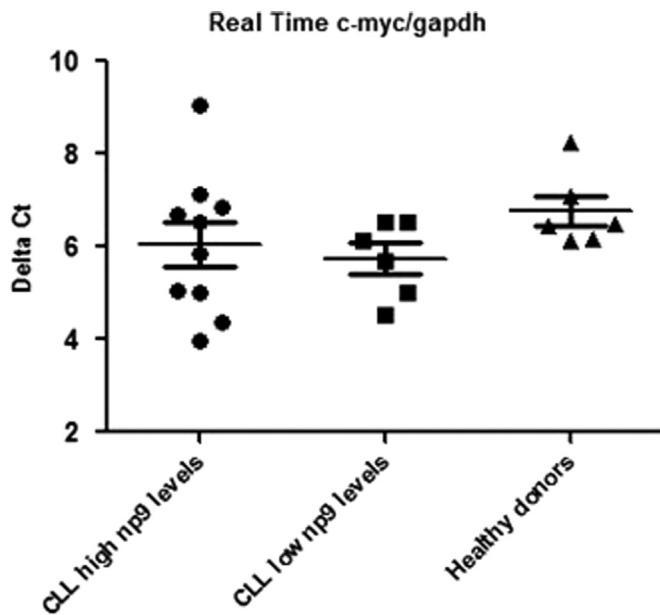


Fig. 2. Relative *c-myc* gene expression normalized to GAPDH expression in CLL patients with high and low *np9* expression levels. The horizontal bars represent the median and the error bars the interquartile range. There is no significant differences ($p=0.19$) in the expression of *c-myc* gene between the analyzed groups.

Conflict of interests

The authors declare that they do not have competing interests.

Authors' contributions

PM conceived the study, and participated in its design and coordination. SF has made substantial contributions to the design of the study, acquisition of data and analysis. NE and JC have been involved in revising the manuscript critically for important intellectual content. PM and SF wrote the paper. GM, GD and PO made

substantial and fundamental contributions to the interpretation and discussion of the results found in this work. AL contributed collecting the samples and selecting the patients. All authors read and approved the final manuscript.

Acknowledgments

This work was supported by Fondo Clemente Estable (Grant FCE_6569) from Agencia Nacional de Investigación e Innovación (ANII) and PEDECIBA, Uruguay.

References

- [1] Singh SK. Endogenous retroviruses: suspects in the disease world. *Future Microbiol* 2007;2:269–75.
- [2] Depil S, Roche C, Dussart P, Prin L. Expression of a human endogenous retrovirus, HERV-K, in the blood cells of leukemia patients. *Leukemia* 2002;16:254–9.
- [3] Chen T, Meng Z, Gan Y, Wang X, Xu F, et al. The viral oncogene Np9 acts as a critical molecular switch for co-activating beta-catenin, ERK, Akt and Notch1 and promoting the growth of human leukemia stem/progenitor cells. *Leukemia* 2013;27:1469–78.
- [4] Dighiero G, Hamblin TJ. Chronic lymphocytic leukaemia. *Lancet* 2008;371:1017–29.
- [5] Puente XS, Pinyol M, Quesada V, Conde L, Ordonez GR, et al. Whole-genome sequencing identifies recurrent mutations in chronic lymphocytic leukaemia. *Nature* 2011;475:101–5.
- [6] Rego N, Bianchi S, Moreno P, Persson H, Kvist A, et al. Search for an aetiological virus candidate in chronic lymphocytic leukaemia by extensive transcriptome analysis. *Br J Haematol* 2012;157:709–17.
- [7] Oppezio P, Vasconcelos Y, Settegrana C, Jeanel D, Vuillier F, Legarff-Tavernier M, et al. The LPL/ADAM29 expression ratio is a novel prognosis indicator in chronic lymphocytic leukemia. *Blood* 2005;106:650–7.
- [8] Gonzalez-Hernandez MJ, Swanson MD, Contreras-Galindo R, Cookinham S, King SR, Noel Jr RJ, et al. Expression of human endogenous retrovirus type K (HML-2) is activated by the Tat protein of HIV-1. *J Virol* 2012;86:7790–805.
- [9] Denne M, Sauter M, Armbruester V, Licht JD, Roemer K, et al. Physical and functional interactions of human endogenous retrovirus proteins Np9 and rec with the promyelocytic leukemia zinc finger protein. *J Virol* 2007;81:5607–16.
- [10] Palacios F, Moreno P, Morande P, Abreu C, Correa A, et al. High expression of AID and active class switch recombination might account for a more aggressive disease in unmutated CLL patients: link with an activated micro-environment in CLL disease. *Blood* 2010;115:4488–96.