



## Growth arrest of *Synechocystis* sp. PCC6803 by superoxide generated from heterologously expressed *Rhodobacter sphaeroides* chlorophyllide *a* reductase

Eui-Jin Kim<sup>1</sup>, Ju-Sim Kim<sup>1</sup>, Hae Jin Rhee, Jeong K. Lee\*

Department of Life Science and Interdisciplinary Program of Integrated Biotechnology, Sogang University, Mapo-gu, Shinsu 1, Seoul 121-742, Republic of Korea

### ARTICLE INFO

#### Article history:

Received 3 November 2008

Revised 2 December 2008

Accepted 2 December 2008

Available online 10 December 2008

Edited by Richard Cogdell

#### Keywords:

Chlorophyllide *a* reductase

Superoxide generation

Heterologous expression

Growth cessation

*Rhodobacter sphaeroides*

*Synechocystis* sp. PCC6803

### ABSTRACT

The photosynthetic growth of *Synechocystis* sp. PCC6803 ceased upon expression of *Rhodobacter sphaeroides* chlorophyllide *a* reductase (COR). However, an increase in cytosolic superoxide dismutase level in the recombinant *Synechocystis* sp. PCC6803 completely reversed the growth cessation. This demonstrates that COR generates superoxide in *Synechocystis* sp. PCC6803. Considering the dissolved oxygen (DO) level suitable for COR, the intracellular DO of this oxygenic photosynthetic cell appears to be low enough to support COR-mediated superoxide generation. The growth arrest of *Synechocystis* sp. PCC6803 by COR may give an insight into the evolutionary path from bacteriochlorophyll *a* biosynthetic pathway to chlorophyll *a*, which bypasses COR reaction.

© 2008 Federation of European Biochemical Societies. Published by Elsevier B.V. All rights reserved.

### 1. Introduction

The biosynthetic pathways for bacteriochlorophyll *a* (Bchl *a*) and chlorophyll *a* (Chl *a*) share the Mg-chelated tetrapyrrole intermediates from protoporphyrin IX to chlorophyllide *a* (Chlide *a*) (Fig. 1). C<sub>20</sub> geranylgeranyl moiety can be directly esterified to Chlide *a* by chlorophyll synthase (ChlG), which is subsequently reduced (at positions 6, 10, and 14) by geranylgeranyl-chlorophyll reductase (ChlP) to yield the phytol of Chl *a* [1,2]. Bchl *a* biosynthesis from Chlide *a* is initiated through its ring B reduction by chlorophyllide *a* reductase (COR) to form 3-vinylbacteriochlorophyllide *a*, whose C-3-vinyl group of ring A is subsequently converted into an acetyl group through the successive actions of hydratase (BchF) and dehydrogenase (BchC) to form bacteriochlorophyllide *a* (Bchlide *a*) [3]. Alternatively, BchF reaction may precede COR-mediated reduction (Fig. 1). Once Bchlide *a* is formed, C<sub>20</sub> geranylgeranyl moiety is also esterified to the tetrapyrrole ring by bacteriochlorophyll synthase (BchG) and subsequently reduced by geranylgeranyl-bacteriochlorophyll reductase (BchP) to yield the phytol of Bchl *a* [4,5].

COR of *Rhodobacter sphaeroides* and *Rhodobacter capsulatus* is a nitrogenase-like enzyme which is composed of BchX, BchY, and

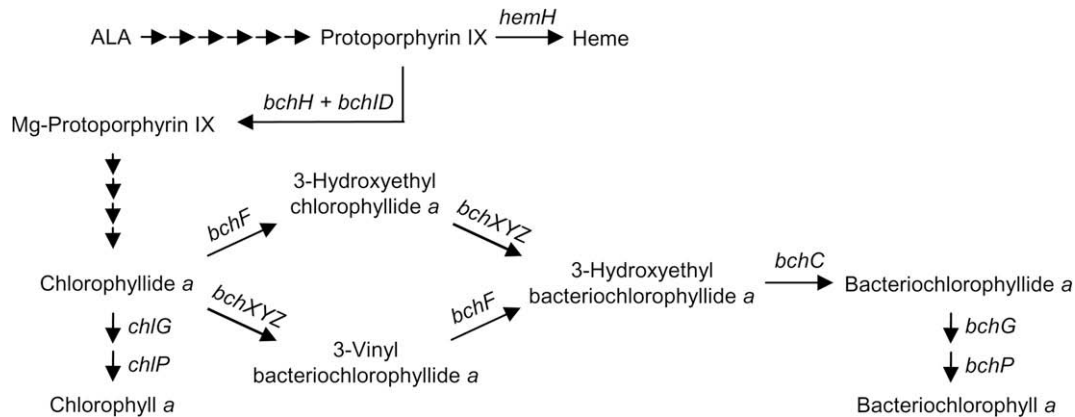
BchZ [6,7]. The anaerobic reduction of Chlide *a* ring B by COR requires NADH as a reductant. Like NifH of nitrogenase, BchX also has an ATP-binding motif. COR accordingly requires ATP for its activity. BchX, which contains FMN, and BchY are iron-sulfur proteins, whereas BchZ is a hemoprotein subunit. Since BchZ, where Chlide *a* binds, is co-purified with BchY, BchY–BchZ complex provides a catalytic site. Thus, it appears that BchX, when its FMN and iron sulfur are reduced by NADH, reduces BchY–BchZ in an ATP-dependent way. Most strikingly, COR generates superoxide through the heme of BchZ at low O<sub>2</sub> (less than 5%) [6]. Superoxide generation from COR reaction is considered to be electron leakage through heme. This in turn rapidly diminishes COR activity at low O<sub>2</sub>, which could result in keeping the newly synthesized Bchl *a* of *R. sphaeroides* at low levels under the semiaerobic conditions. *R. sphaeroides* is killed by the superoxide stress from COR reaction unless cytosolic Fe-containing superoxide dismutase (FeSOD) is expressed [6].

Xiong et al. have clarified that bacteriochlorophyll biosynthesis evolved before chlorophyll biosynthesis based on the phylogenetic analyses of the major groups of photosynthetic bacteria using the new sequence information for genes involved in photosynthesis [8]. Accordingly, the cyanobacteria-based Chl *a* biosynthesis was suggested as a recent development in the course of pigment evolution. Comparing the biosynthetic pathways of Chl *a* with that of Bchl *a*, a shortcut from Chlide *a* directly to the metabolic steps by ChlG and ChlP, which show significant similarity to BchG and

\* Corresponding author. Fax: +82 2 704 3601.

E-mail address: [jgklee@sogang.ac.kr](mailto:jgklee@sogang.ac.kr) (J.K. Lee).

<sup>1</sup> These authors contributed equally to this work.



**Fig. 1.** Chl *a* and Bchl *a* biosynthetic pathways [1,3]. Protoporphyrin IX is synthesized from 5-aminolevulinic acid (ALA), and used either by ferrochelatase (*hemH*) to form heme or by Mg-chelatase (*bchH* and *bchID*) to form photosynthetic pigments of Chl *a* and Bchl *a*.

BchP, respectively, might have evolved to bypass superoxide-generating COR reaction during the rise in atmospheric oxygen level [6]. Accordingly, how COR of *R. sphaeroides* affected the photosynthetic growth of *Synechocystis* sp. PCC6803 was examined. We found that once COR was heterologously expressed in the photosynthetically-growing *Synechocystis* sp. PCC6803, it generates superoxide to cease cell growth. Analyses of COR reaction according to  $O_2$  level further indicates the low dissolved oxygen (DO) level in *Synechocystis* sp. PCC6803 even though it performs oxygenic photosynthesis. The superoxide-generating COR reaction might reflect a selection pressure for the emergence of the Chl *a* biosynthetic pathway for an oxygenic photosynthetic organism.

## 2. Materials and methods

### 2.1. Bacterial strains and growth conditions

*Synechocystis* sp. strain PCC6803 was cultivated at 30 °C in 250-ml Erlenmeyer flasks containing 100 ml of a BG11 medium [9] supplemented with 10 mM glucose, which was agitated on a rotary shaker at 130 rpm under 40 microEinsteins  $m^{-2} s^{-1}$  white light at 30 °C. *R. sphaeroides* 2.4.1 was grown at 28 °C in Siström's succinate-based minimal medium as described previously [10,11]. *Escherichia coli* was grown at 37 °C in Luria–Bertani (LB) medium. Kanamycin (Km), streptomycin (Sm), and spectinomycin (Sp) for *R. sphaeroides* and *E. coli* cultures were added as indicated previously [10]. Gentamycin (Gm) and Km were used at 30 and 10  $\mu g/ml$ , respectively, for *Synechocystis* sp. strain PCC6803.

### 2.2. Construction of *bchXYZ* expression plasmids and their mobilization into *Synechocystis* sp. PCC6803

A 4.2-kb *Bal*I–*Hinc*II DNA fragment containing *bchXYZ* was cloned into the *Sma*I site of pBluescript SK(–) (Stratagene, CA, USA), and was excised out as a *Sall*–*Xba*I DNA fragment. The *bchXYZ* DNA was subsequently cloned with 2.2-kb *Xba*I–*Hind*III  $\Omega$  ( $Km^r$ ) DNA into the *Xho*I–*Hind*III of a broad-host-range plasmid pSL1211 ( $Gm^r$ ) [12] to generate pSLXYZ (Fig. 2), in which *bchXYZ* expression is under the control of the IPTG-inducible *trc* promoter (*P<sub>trc</sub>*). For constitutive expression of *R. sphaeroides* FeSOD, a 308-bp *Pst*I–*Sma*I DNA of *R. sphaeroides* *rrnB* promoter [13] and a 1.1-kb *Sma*I–*Eco*RI DNA fragment containing *R. sphaeroides* *sodB* were ligated and cloned into the *Pst*I–*Eco*RI of pBS (Stratagene, CA, USA) to generate pBS-*rrnB*-*SodB*. The recombinant 1.4-kb *Pst*I–*Eco*RI DNA encompassing *PrrnB*-*sodB* was cloned into the *Nsi*I–*Eco*RI of pSLXYZ to yield pSLXYZ-*SodB*, in which *PrrnB*-*sodB* is situated at

the other side of  $\Omega$  ( $Km^r$ ) DNA from *bchXYZ* (Fig. 2). By observation, *sodB* expression of pSLXYZ-*SodB* is not influenced by *P<sub>trc</sub>*. Another plasmid pSL-Km was constructed and used as a control, in which a 2.2-kb *Bam*HI–*Hind*III  $\Omega$  ( $Km^r$ ) DNA, which had been obtained after cloning of a 2.2-kb *Xba*I–*Hind*III  $\Omega$  ( $Km^r$ ) DNA into pBS, was cloned into the *Bam*HI–*Hind*III of pSL1211.

Plasmids pSLXYZ, pSLXYZ-*SodB*, and pSL-Km were mobilized from *E. coli* S17-1 into *Synechocystis* sp. PCC6803 through conjugation as described previously [14]. Exponentially growing *E. coli* S17-1 and *Synechocystis* sp. PCC6803 were mixed and allowed to mate on a solid BG11 plate at 30 °C for 12 h under white light (20 microEinsteins  $m^{-2} s^{-1}$ ). The plates were then overlaid with Km and Gm. Finally, exconjugants ( $Km^r$  and  $Gm^r$ ) carrying pSLXYZQ, pSLXYZQ-*SodB*, and pSL-Km were selected in BG11 medium supplemented with Km and Gm.

### 2.3. Preparation of BchZ and Western immunoblot analysis

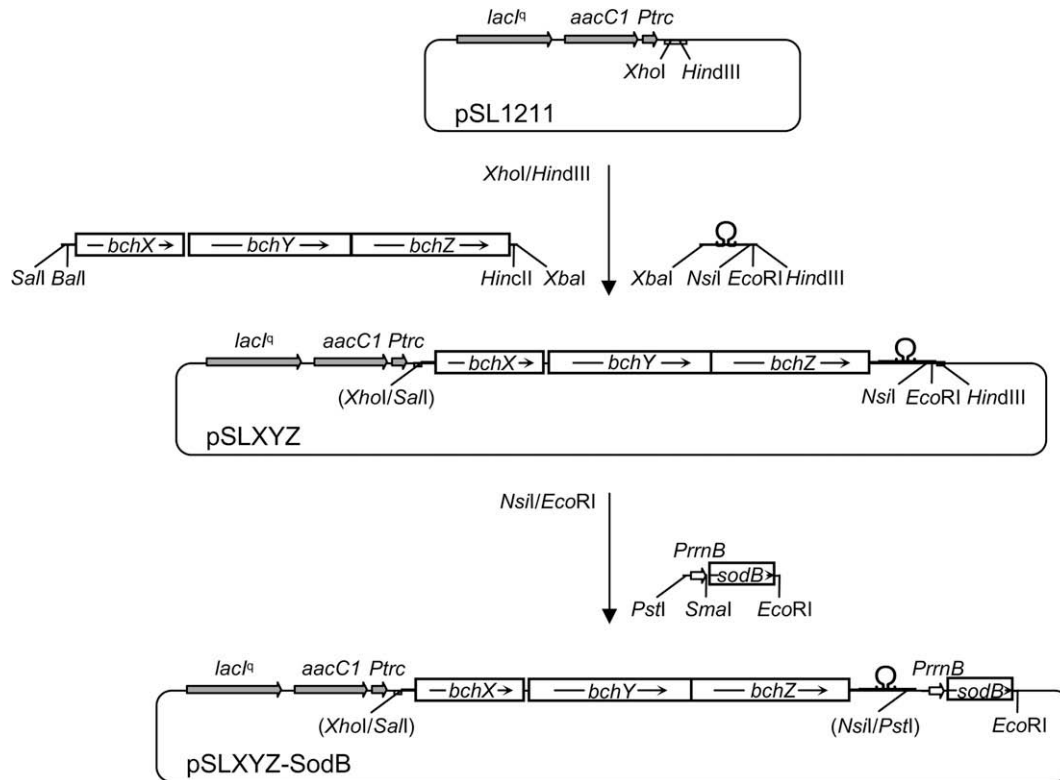
BchZ of *R. sphaeroides* was purified and used as an immunogen to raise an antiserum from mouse as described previously [15]. The preparation of cell-extracts, electrophoresis (SDS–PAGE, 12% polyacrylamide), and electro-blotting of proteins were also performed as described previously [16,17]. A blot treated with BchZ antibody was visualized using an ECL detection system supplied by Amersham Pharmacia after reaction with a 1/5000 dilution of goat anti-mouse IgG (Pierce) conjugated with horseradish peroxidase (HRP) as described previously [18]. Protein was determined by a modified Lowry method using bovine serum albumin (BSA, Sigma) as a standard [19].

### 2.4. Detection and determination of SOD activity

Preparation of soluble cell extracts, electrophoresis of a native polyacrylamide (13.5%) gel, staining of SOD activity, and the quantification of the relative SOD levels between samples were performed as described previously [16,20]. Cytosolic SOD activities in cell extracts were determined as described previously [21].

### 2.5. Purification and detection of Chlide *a*

Chlide *a* was extracted from the culture supernatant of *R. sphaeroides* *bchZ*–*bchF* mutant as described previously [6]. Chlide *a*, whose concentration was determined as described previously [7], was used as a substrate for COR reaction after dissolution in dimethyl sulfoxide.



**Fig. 2.** Construction of plasmids for the expression of *bchXYZ* in *Synechocystis* sp. PCC6803. *R. sphaeroides* *bchXYZ* DNA was cloned with  $\Omega$  ( $Km^r$ ) DNA as a selection marker into a broad-host-range expression plasmid pSL1211 ( $Gm^r$ ) [12] to generate pSLXYZ, in which *bchXYZ* is expressed by an IPTG-inducible *trc* promoter (*Ptrc*). A recombinant DNA of *R. sphaeroides* *rrnB* promoter [13]-*sodB* was cloned into the other side of  $\Omega$  DNA from *bchXYZ* of pSLXYZ to yield pSLXYZ-SodB. *aacC1* codes for a Gm acetyltransferase gene conferring  $Gm^r$ . *lacI<sup>q</sup>* codes for a *lac* repressor protein whose –35 site in promoter region is mutated for its overexpression.

## 2.6. COR reaction

COR reaction was performed with an equimolar (8.0 nM for each subunit) mixture of BchX, BchY, and BchZ in the presence of NADH and an ATP-generating system as described previously [6]. Reaction was initiated by adding Chlide *a* at 1–2  $\mu$ M. The reaction mixture was analyzed for its product 3-vinylbacteriochlorophyllide *a* as described previously [7].

## 2.7. Superoxide determination by cytochrome *c* (Cyt *c*) reduction assay

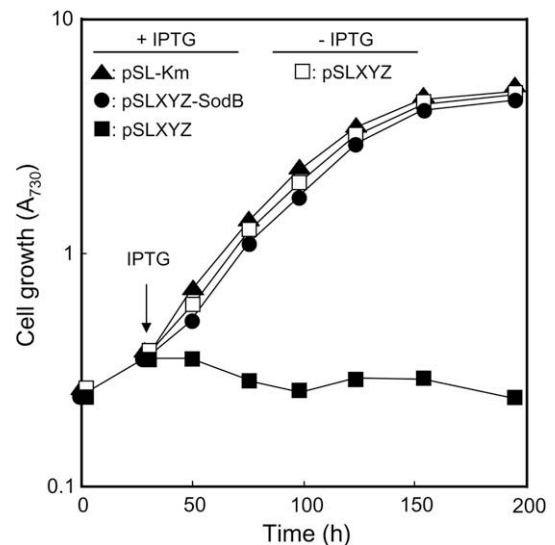
COR reaction was performed with 20  $\mu$ M Cyt *c* under the gas phase comprising from 0 to 20%  $O_2$ , in which the remaining gas phase was filled with  $N_2$ . The reduced Cyt *c* (550 nm) in reaction mixture was determined as described previously [21,22]. Superoxide generation was examined from the difference in the rates of Cyt *c* reduction in the absence and presence of *E. coli* MnSOD (10 units).

## 3. Results and discussion

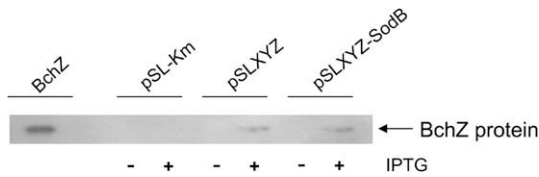
### 3.1. Growth arrest of *Synechocystis* sp. PCC6803 by the superoxide stress from COR reaction

*R. sphaeroides* DNA encompassing *bchXYZ*, which codes for the three subunits of COR, was cloned at the downstream of IPTG-inducible *trc* promoter (*Ptrc*) to yield pSLXYZ (Fig. 2). The recombinant plasmid was mobilized into *Synechocystis* sp. PCC6803, and the cell growth under photoheterotrophic conditions was examined with or without IPTG (0.1 mM) treatment. The growth of the control cell, which carries pSL-Km, was not affected by IPTG (Fig. 3). *Synechocystis* sp. PCC6803 carrying pSLXYZ grew like the

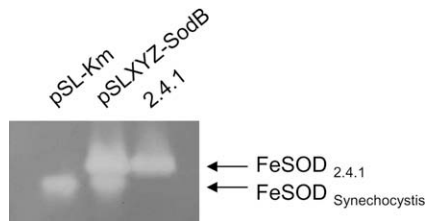
control cell in the absence of IPTG induction, whereas no growth ensued after IPTG treatment. The expression of the most distal gene *bchZ* was examined with total cell lysate by Western immunoblot analysis using BchZ antibody. The hybridization signal, which was not observed in the control cell, was detected from



**Fig. 3.** Effect of *bchXYZ* expression on the growth of *Synechocystis* sp. PCC6803. Plasmids pSLXYZ, pSLXYZ-SodB, and pSL-Km were mobilized into *Synechocystis* sp. PCC6803 through conjugation, and the growth of the recombinant *Synechocystis* sp. PCC6803 was examined with (closed symbols) or without (open symbol) IPTG, which was treated at the time indicated by an arrow.



**Fig. 4.** Western immunoblot analysis of BchZ. The recombinant *Synechocystis* sp. PCC6803 containing pSLXYZ, pSLXYZ-SodB, and pSL-Km were grown with (+) or without (–) 0.1 mM IPTG. Cell lysates were prepared from exponentially growing cells ( $A_{730}$ , approximately 1.0) (Fig. 3). However, cell lysate from *Synechocystis* sp. PCC6803 containing pSLXYZ after IPTG induction, which showed no apparent growth (Fig. 3), was prepared from the cell 48 h after treatment. An aliquot (20  $\mu$ g protein) of cell lysate was loaded per each lane for hybridization with BchZ antibody.



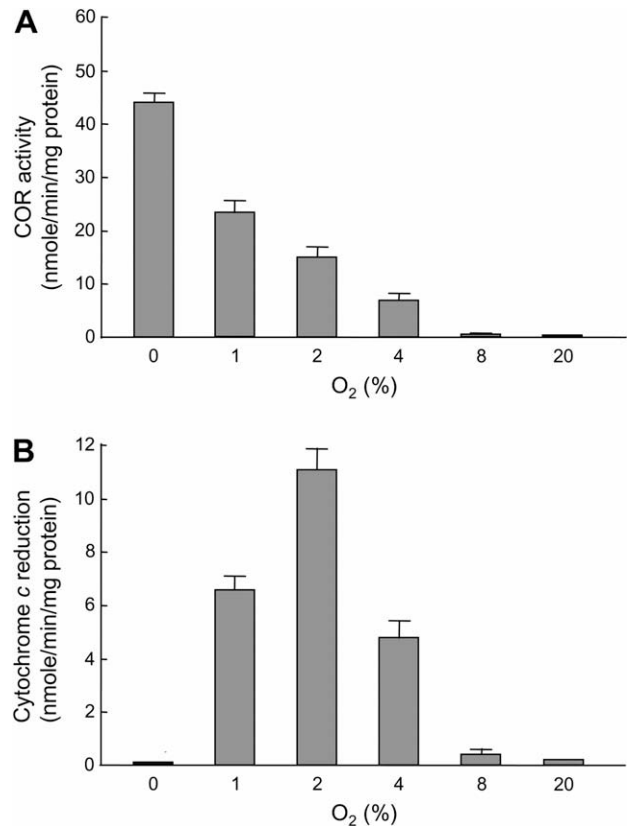
**Fig. 5.** FeSOD activity of the recombinant *Synechocystis* sp. PCC6803 containing pSLXYZ-SodB. Cell extracts of *Synechocystis* sp. PCC6803 containing pSLXYZ-SodB and pSL-Km were examined for FeSOD activity, and were compared with that of *R. sphaeroides* 2.4.1 grown exponentially under photoheterotrophic conditions at 10 W/m<sup>2</sup>. The same amount of protein (50  $\mu$ g) was loaded in each lane.

the cell carrying pSLXYZ after IPTG treatment only (Fig. 4), despite lack of any apparent growth (Fig. 3). Thus, *bchXYZ* of pSLXYZ is heterologously expressed after induction in *Synechocystis* sp. PCC6803.

COR generates superoxide from its reaction at low O<sub>2</sub> (less than 5%) [6], and Chlide *a* is an intermediate for Chl *a* biosynthesis. Accordingly, it was examined whether the growth arrest of *Synechocystis* sp. PCC6803 by COR expression was restored by the increase in SOD activity. *R. sphaeroides* *sodB*, which codes for FeSOD, was cloned at the downstream of the *R. sphaeroides* *PrnB* promoter (*PrnB*) to generate the recombinant plasmid pSLXYZ-SodB (Fig. 2). Since *R. sphaeroides* *sodB* is expressed by the constitutive promoter *PrnB*, *Synechocystis* sp. PCC6803 containing pSLXYZ-SodB expressed *R. sphaeroides* FeSOD irrespective of IPTG treatment (data not shown but only with IPTG was illustrated; Fig. 5). Measurement of total cytosolic SOD activities revealed approximately fourfold higher SOD activity in *Synechocystis* sp. PCC6803 carrying pSLXYZ-SodB compared with that of the control cell containing pSL-Km. *Synechocystis* sp. PCC6803 carrying pSLXYZ-SodB grew like the control cell even after IPTG treatment (Fig. 3). Thus, the increase of FeSOD activity reversed the growth cessation associated with COR expression. Although spectral analysis of the extracts from the recombinant cell carrying pSLXYZ-SodB did not tell COR reaction product 3-vinylbacteriochlorophyllide *a* from Chl *a* (data not shown) due to the masking by the large peak of the latter, COR expression after IPTG treatment was confirmed by Western hybridization analysis with BchZ antibody (Fig. 4). Taken together, the results clearly indicate that COR, once expressed in *Synechocystis* sp. PCC6803, generates superoxide to cease cell growth.

### 3.2. Chlide *a* reduction and superoxide generation by COR according to the varying levels of O<sub>2</sub>

Oxygen is evolved significantly during photoheterotrophic growth of *Synechocystis* sp. PCC6803 in the presence of glucose [23]. Nonetheless, the generation of superoxide by COR, which is



**Fig. 6.** Chlide *a* reduction (A) and superoxide generation (B) by COR at the varying levels of O<sub>2</sub> (0–20%). (A) Chlide *a* reduction activities were measured by determining the level of reaction product 3-vinylbacteriochlorophyllide *a* for 2 h. (B) Superoxide generation at varying levels of O<sub>2</sub> was measured by SOD-sensitive Cyt *c* reduction method. The error bars in both panels correspond to the standard deviations of the means.

observed at low O<sub>2</sub> [6], suggests the low O<sub>2</sub> environments in cell. Both Chlide *a* reduction and superoxide generation by COR were examined in vitro from 1% to 20% O<sub>2</sub>, and compared with those measured in the absence of oxygen. As mentioned previously [6], Chlide *a* reduction by COR decreased gradually as O<sub>2</sub> level was increased (Fig. 6A). Interestingly, COR-mediated superoxide generation at 2% O<sub>2</sub> (DO, 31 ± 4  $\mu$ M) was reproducibly higher than those measured at 1% (DO, 16 ± 2  $\mu$ M) or 4% O<sub>2</sub> (DO, 55 ± 4  $\mu$ M), and then sharply dropped at 8% (DO, 92 ± 4  $\mu$ M) and 20% O<sub>2</sub> (DO, 207 ± 13  $\mu$ M) (Fig. 6B). The lower superoxide generation at 1% O<sub>2</sub> may reflect either the limiting concentration of molecular oxygen in comparison with 2% O<sub>2</sub> or more electron flux to Chlide *a* at 1% O<sub>2</sub>, as illustrated by higher Chlide *a* reduction activity. The detailed explanation for the maximal superoxide generation at 2% O<sub>2</sub> will have to await the elucidation of the COR reaction mechanism. The decrease in both Chlide *a* reduction and superoxide generation at O<sub>2</sub> higher than 4% may be explained by the decreasing stability of the iron–sulfur subunits BchX and BchY under the conditions, although the enzyme complex (BchXYZ) is fairly stable at 2% O<sub>2</sub> [6]. Thus, the O<sub>2</sub> level in photoheterotrophically-grown *Synechocystis* sp. PCC6803 appears to be low enough (<8% O<sub>2</sub> [DO, 92 ± 4  $\mu$ M]) in order to support superoxide generation by COR.

### 3.3. Evolutionary implication

There has been an argument that Chl *a*, which absorbs short-wavelength light compared with Bchl *a*, evolved for photosynthetic bacteria to get more energy to split water, one of the most abundant electron donors in nature. Both Chl *a* and Bchl *a*

pathways might be assumed to co-exist in the primitive lineage of photosynthetic bacteria. Although SOD, which is known to emerge as the advent of O<sub>2</sub> in the atmosphere [24], is assumed to be present in primitive anoxygenic photosynthetic bacteria, its abundance might not be sufficient to resolve superoxide stress. The relative SOD levels of various organisms are positively correlated with their oxygen exposure [25]. Accordingly, COR may be deselected due to its activity of superoxide generation as oxygen was liberated from the cleavage of water. Consequently, Bchl *a* biosynthetic pathway, which branches at the level of Chlide *a*, may be degenerated. Interestingly, *Chlorobium tepidum*, a green sulfur bacterium contains biosynthetic pathways for Chl *a* and Bchl *a* and *c* [26]. The evolution of Chl *a* biosynthesis is thought to accompany the emergence of ChlG and ChlP, possibly through the gene duplication of BchG and BchP. The predicted sequences of ChlG and ChlP of *Synechocystis* sp. PCC6803 bear 35% and 38% identity with those of *R. sphaeroides* BchG and BchP, respectively. Since cyanobacteria are believed to have emerged before the Proterozoic era (between 2500 and 543 million years ago) [27], the evolution of a new shortcut Chl *a* pathway from Bchl *a* biosynthesis should be a preceding event.

In summary, we have expressed *R. sphaeroides* COR in *Synechocystis* sp. PCC6803, and found that the photoheterotrophic growth of recombinant *Synechocystis* sp. PCC6803 ceased unless the cytoplasmic FeSOD level was increased. Thus, COR generates superoxide in *Synechocystis* sp. PCC6803 to cease cell growth. The superoxide generation by COR according to the partial pressure of oxygen showed a bell-shaped curve with the maximal activity at 2% O<sub>2</sub>, whereas Chlide *a* reduction decreased in inverse relation to O<sub>2</sub>, reflecting the stability decrease of COR at high O<sub>2</sub>. The superoxide generation by COR in *Synechocystis* sp. PCC6803 indicates its low intracellular DO even during oxygenic photosynthesis. The results shown in this work further provide an insight into the evolutionary path of the biosynthetic pathways from Bchl *a* to Chl *a*.

### Acknowledgements

This work was supported by the 21C Frontier Microbial Genomics and Applications Center Program, Ministry of Education, Science and Technology, Korea.

### References

- [1] Chew, A.G. and Bryant, D.A. (2007) Chlorophyll biosynthesis in bacteria: the origins of structural and functional diversity. *Annu. Rev. Microbiol.* 61, 113–129.
- [2] Adlasee, H.A., Gibson, L.C., Jensen, P.E. and Hunter, C.N. (1996) Cloning, sequencing and functional assignment of the chlorophyll biosynthesis gene, *chlP*, of *Synechocystis* sp. PCC6803. *FEBS Lett.* 389, 126–130.
- [3] Bollivar, D.W., Suzuki, J.Y., Beatty, J.T., Dobrowolski, J.M. and Bauer, C.E. (1994) Directed mutational analysis of bacteriochlorophyll *a* biosynthesis in *Rhodobacter capsulatus*. *J. Mol. Biol.* 237, 622–640.
- [4] Adlasee, H.A., Fiedor, L. and Hunter, C.N. (2000) Physical mapping of *bchG*, *orf427*, and *orf177* in the photosynthesis gene cluster of *Rhodobacter sphaeroides*: functional assignment of the bacteriochlorophyll synthetase gene. *J. Bacteriol.* 182, 3175–3182.
- [5] Adlasee, H.A. and Hunter, C.N. (1999) Physical mapping and functional assignment of the geranylgeranyl-bacteriochlorophyll reductase gene, *bchP*, of *Rhodobacter sphaeroides*. *J. Bacteriol.* 181, 7248–7255.
- [6] Kim, E.-J., Kim, J.-S., Lee, I.-H., Rhee, H.J. and Lee, J.K. (2008) Superoxide generation by chlorophyllide *a* reductase of *Rhodobacter sphaeroides*. *J. Biol. Chem.* 283, 3718–3730.
- [7] Nomata, J., Mizoguchi, T., Tamiaki, H. and Fujita, Y. (2006) A second nitrogenase-like enzyme for bacteriochlorophyll biosynthesis: reconstitution of chlorophyllide *a* reductase with purified X-protein (BchX) and YZ-protein (BchY–BchZ) from *Rhodobacter capsulatus*. *J. Biol. Chem.* 281, 15021–15028.
- [8] Xiong, J., Inoue, K., Nakahara, M. and Bauer, C.E. (2000) Molecular evidence for the early evolution of photosynthesis. *Science* 289, 1724–1730.
- [9] Ktraz, W. and Myers, J. (1955) Nutrition and growth of several blue-green algae. *Am. J. Bot.* 42, 282–287.
- [10] Kho, D.H., Yoo, S.B., Kim, J.-S., Kim, E.-J. and Lee, J.K. (2004) Characterization of Cu- and Zn-containing superoxide dismutase of *Rhodobacter sphaeroides*. *FEMS Microbiol. Lett.* 234, 261–267.
- [11] Donohue, T.J., McEwan, A.G. and Kaplan, S. (1986) Cloning, DNA sequence, and expression of the *Rhodobacter sphaeroides* cytochrome *c2* gene. *J. Bacteriol.* 168, 962–972.
- [12] Ng, W.O., Zentella, R., Wang, Y., Taylor, J.S. and Pakrasi, H.B. (2000) *PhrA*, the major photoreactivating factor in the cyanobacterium *Synechocystis* sp. strain PCC6803 codes for a cyclobutane-pyrimidine-dimer-specific DNA photolyase. *Arch. Microbiol.* 173, 412–417.
- [13] Dryden, S.C. and Kaplan, S. (1990) Localization and structural analysis of the ribosomal RNA operons of *Rhodobacter sphaeroides*. *Nucleic Acids Res.* 18, 7267–7277.
- [14] Elhai, J. and Wolk, C.P. (1988) Conjugal transfer of DNA to cyanobacteria. *Methods Enzymol.* 167, 747–754.
- [15] Youn, H.-D., Youn, H., Lee, J.-W., Yim, Y.-I., Lee, J.K., Hah, Y.C. and Kang, S.-O. (1996) Unique isozymes of superoxide dismutase in *Streptomyces griseus*. *Arch. Biochem. Biophys.* 334, 341–348.
- [16] Kim, J.-S., Kang, S.O. and Lee, J.K. (2003) The protein complex composed of nickel-binding SrnQ and DNA-binding motif-bearing SrnR of *Streptomyces griseus* represses *sodF* transcription in the presence of nickel. *J. Biol. Chem.* 278, 18455–18463.
- [17] Sambrook, J. and Russell, D.W. (2001) *Molecular Cloning: A Laboratory Manual*, 3rd ed, Cold Spring Harbor Laboratory Press, Cold Spring Harbor, NY.
- [18] Kim, J.-S., Jang, J.-H., Lee, J.-W., Kang, S.-O., Kim, K.-S. and Lee, J.K. (2000) Identification of cis site involved in nickel-responsive transcriptional repression of *sodF* gene coding for Fe- and Zn-containing superoxide dismutase of *Streptomyces griseus*. *Biochim. Biophys. Acta* 1493, 200–207.
- [19] Markwell, M.A., Haas, S.M., Bieber, L.L. and Tolbert, N.E. (1978) A modification of the Lowry procedure to simplify protein determination in membrane and lipoprotein samples. *Anal. Biochem.* 87, 206–210.
- [20] Beauchamp, C. and Fridovich, I. (1971) Superoxide dismutase: improved assays and an assay applicable to acrylamide gels. *Anal. Biochem.* 44, 276–287.
- [21] McCord, J.M. and Fridovich, I. (1969) Superoxide dismutase. An enzymic function for erythrocyte hemocuprein (hemocuprein). *J. Biol. Chem.* 244, 6049–6055.
- [22] Massey, V. (1959) The microestimation of succinate and the extinction coefficient of cytochrome *c*. *Biochim. Biophys. Acta* 34, 255–256.
- [23] McNamara, V.P., Sutterwala, F.S., Pakrasi, H.B. and Whitmarsh, J. (1997) Structural model of cytochrome *b<sub>559</sub>* in photosystem II based on a mutant with genetically fused subunits. *Proc. Natl. Acad. Sci. USA* 94, 14173–14178.
- [24] Landis, G.N. and Tower, J. (2005) Superoxide dismutase evolution and life span regulation. *Mech. Ageing Dev.* 126, 365–379.
- [25] McCord, J.M., Keele, B.B. and Fridovich, I. (1971) An enzyme-based theory of obligate anaerobiosis: the physiological function of superoxide dismutase. *Proc. Natl. Acad. Sci. USA* 68, 1024–1027.
- [26] Frigaard, N.U. and Bryant, D.A. (2004) Seeing green bacteria in a new light: genomics-enabled studies of the photosynthetic apparatus in green sulfur bacteria and filamentous anoxygenic phototrophic bacteria. *Arch. Microbiol.* 182, 265–276.
- [27] Des Marais, D.J. (2000) Evolution. When did photosynthesis emerge on Earth. *Science* 289, 1703–1705.