

Contents lists available at ScienceDirect

Biomaterials

journal homepage: www.elsevier.com/locate/biomaterials

Corrigendum

Corrigendum to ‘The use of granulocyte-colony stimulating factor induced mobilization for isolation of dental pulp stem cells with high regenerative potential’ [Biomaterials 34/36 (2013) 9036–9047]



Masashi Murakami ^{a, 1}, Hiroshi Horibe ^{a, b, 1}, Koichiro Iohara ^a, Yuki Hayashi ^{a, c},
Yohei Osako ^a, Yoshifumi Takei ^d, Kazuhiko Nakata ^e, Noboru Motoyama ^f, Kenichi Kurita ^b,
Misako Nakashima ^{a, *}

^a Department of Stem Cell Biology and Regenerative Medicine, National Center for Geriatrics and Gerontology, Research Institute, Obu, Japan

^b Department of Oral and Maxillofacial Surgery, School of Dentistry, Aichi Gakuin University, Nagoya, Japan

^c Department of Pediatric Dentistry, School of Dentistry, Aichi Gakuin University, Nagoya, Japan

^d Department of Biochemistry and Division of Disease Models, Center for Neurological Diseases and Cancer, Nagoya University Graduate School of Medicine, Nagoya, Japan

^e Department of Endodontics, School of Dentistry, Aichi Gakuin University, Nagoya, Japan

^f Department of Cognitive Brain Science, National Center for Geriatrics and Gerontology, Research Institute, Obu, Japan

The authors regret that some errors were introduced in Fig. 1J, 1N, 2F and 4O. In the previously published Fig. 1J, the panels and the expression ratio of neurofilament, neuromodulin and Scn1 α in the panels were incorrect. In the previously published Fig. 1N, the expression ratio of PPAR γ and aP2 in the panels were incorrect. In the previously published Fig. 2F, the expression ratios of p16 and p21 to β -actin, and the panels of p16, p21 and β -actin were incorrect. There are some errors in the sentence of the Materials and Methods and the Results. The correct sentences are “The short-term (6–13th) and long-term (19–30th) culture passages of MDPSCs and colony-derived DPSCs were compared (n = 3, each) (page 9040, left lines 27–28)”, and “Western blot analysis revealed that expression of p16 and p21 in long-term expansion was higher in DPSCs compared to MDPSCs (Fig. 2F) (page 9042, right lines 3–7)”. In the previously published Fig. 4O, the panels of TRH-DE and β -actin were incorrect. The correct Figures, Fig. 1J, 1N, 2F and 4O are shown below. The authors confirm that these errors do not change the conclusions of the paper.

DOI of original article: <http://dx.doi.org/10.1016/j.biomaterials.2013.08.011>.

* Corresponding author. Department of Stem Cell Biology and Regenerative Medicine, National Center for Geriatrics and Gerontology, Research Institute, 7-430 Morioka, Obu, Aichi 474-8511, Japan.

E-mail address: misako@ncgg.go.jp (M. Nakashima).

¹ M.M. and H.H. contributed equally in experimental design and execution, data collection, analysis, and assembly, and preparation of figures for publication.

<http://dx.doi.org/10.1016/j.biomaterials.2016.02.005>

0142-9612/© 2013 The Authors. Published by Elsevier Ltd. This is an open access article under the CC BY-NC-ND license (<http://creativecommons.org/licenses/by-nc-nd/3.0/>).

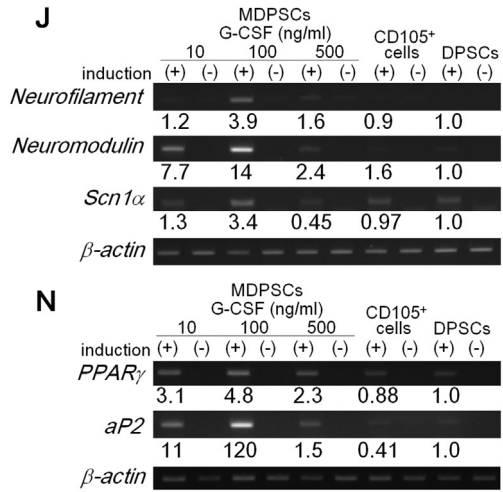


Figure 1

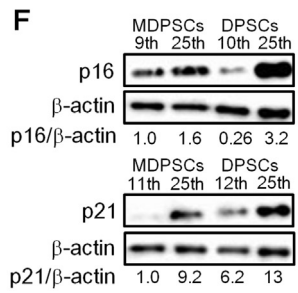


Figure 2

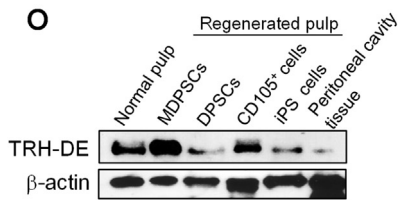


Figure 4

The authors would like to apologise for any inconvenience caused.