

journal homepage: www.elsevier.com/locate/febsopenbio

The effects of the heme precursor 5-aminolevulinic acid (ALA) on REV-ERB α activation



Kohei Yamashita^a, Yuichiro Hagiya^a, Motowo Nakajima^b, Masahiro Ishizuka^b, Tohru Tanaka^b, Shun-ichiro Ogura^{a,*}

^a Graduate School of Bioscience and Biotechnology, Tokyo Institute of Technology, 4259-B102, Nagatsuta-cho, Midori-ku, Yokohama 226-8501, Japan

^b SBI Pharmaceuticals CO., LTD., Izumi Garden Tower 20F, 1-6-1, Roppongi, Minato-ku, Tokyo 106-6020, Japan

ARTICLE INFO

Article history:

Received 4 February 2014

Revised 20 March 2014

Accepted 21 March 2014

Keywords:

5-Aminolevulinic acid

Circadian rhythms

REV-ERB α

Porphyrin metabolism

ABSTRACT

The nuclear receptor, REV-ERB α , has a key role in circadian rhythms and requires heme as its ligand. The present study determined whether the heme precursor, 5-aminolevulinic acid (ALA), affects REV-ERB α and its target genes. When exposed to ALA, the human lung diploid cell line, WI-38, exhibited activation of REV-ERB α and repression of the transcription of REV-ERB α target genes, including *BMAL1*, an essential component of the circadian oscillator. Moreover, co-incubation of sodium ferrous citrate (SFC) and ALA also activated REV-ERB α and repressed the transcription of REV-ERB α target genes. These results indicate that ALA regulates human circadian rhythms via REV-ERB α .

© 2014 The Authors. Published by Elsevier B.V. on behalf of the Federation of European Biochemical Societies. This is an open access article under the CC BY license (<http://creativecommons.org/licenses/by/3.0/>).

1. Introduction

Humans have circadian rhythms that allow them to adapt to environmental change caused by the earth's rotational period [1–3]. The suprachiasmatic nucleus in the hypothalamus is known to control the central clock in mammalian cells. Many tissues have circadian rhythms referred to as peripheral clocks in addition to a central clock [4]. Circadian rhythm is controlled by feedback loops consisting of transcription and translation of clock proteins and is mainly regulated by loops consisting of the heterodimeric protein complex of *BMAL1/CLOCK*, *BMAL1/NPAS2*, and *PER/CRY*. The complex of *BMAL1/CLOCK* and *BMAL1/NPAS2* activate transcription of clock genes, including *PER* and *CRY*, by binding E-box [5,6]. These transcriptional products form the complex and suppress the activities of *BMAL1/CLOCK* and *BMAL1/NPAS2* [2,4]. REV-ERB α and REV-ERB β , typical nuclear receptors, strongly modulate circadian rhythms by binding to the ROR region of *BMAL1* or *CLOCK* and suppresses the expression of these genes [7]. Heme was reported to be

a ligand of REV-ERB α and REV-ERB β and found to be fundamentally important for their activities [8,9].

5-Aminolevulinic acid (ALA) is widely distributed in both plants and animals and is the common precursor of heme [10]. ALA administration induces cancer-specific accumulation of fluorescent protoporphyrin IX (PpIX) [11]. Therefore, fluorescence diagnosis, also termed photodynamic diagnosis, is based on the different ALA-induced fluorescent signatures of normal and cancer tissues [12]. In contrast, in a normal tissue, the iron ion is inserted into PpIX to form heme in the mitochondria and incorporated into hemoproteins. Our previous study showed that the administration of ALA increased cytochrome c oxidase activity in mice [13]. These findings strongly suggest that the administration of ALA leads to the accumulation of intracellular heme. The present study tested the possible impact of ALA on the endogenous activities of REV-ERB α *in vitro* to determine whether this compound influences circadian rhythms in human cells. This study demonstrates the potential of ALA as an endogenous compound that affects circadian rhythms.

2. Materials and methods

2.1. Biochemicals

ALA hydrochloride and sodium ferrous citrate (SFC) were purchased from Cosmo Oil Co., Ltd. (Tokyo, Japan). Dulbecco's modified Eagle's Medium (DMEM) and protease inhibitor cocktail and

Abbreviations: ALA, 5-aminolevulinic acid; Ct, cycle threshold; DMEM, Dulbecco's modified Eagle's Medium; HPLC, high-performance liquid chromatography; PpIX, protoporphyrin IX; SFC, sodium ferrous citrate

* Corresponding author. Address: Department of Bioengineering, Graduate School of Bioscience and Biotechnology, Tokyo Institute of Technology, 4259-B102, Nagatsuta-cho, Midori-ku, Yokohama 226-8501, Japan. Tel./fax: +81 45 924 5845.

E-mail address: sogura@bio.titech.ac.jp (S.-i. Ogura).

<http://dx.doi.org/10.1016/j.fob.2014.03.010>

2211–5463/© 2014 The Authors. Published by Elsevier B.V. on behalf of the Federation of European Biochemical Societies. This is an open access article under the CC BY license (<http://creativecommons.org/licenses/by/3.0/>).

antibiotic–antimycotic solution were obtained from Nacalai Tesque (Kyoto, Japan). Fetal bovine serum (FBS) and horse serum were purchased from Invitrogen (Carlsbad, CA, USA). All other chemicals used were of analytical grade.

2.2. Cell culture

Human lung diploid cells (WI-38) were purchased from RIKEN Cell Bank (Tsukuba, Japan). The cells were maintained under 5% CO₂ gas at 37 °C in DMEM supplemented with 10% (v/v) fetal bovine serum and 1% (v/v) antibiotic–antimycotic solution.

2.3. HPLC analysis of PpIX and heme

Cells (1×10^6 cells) were incubated with 1 mM ALA and 0.5 mM SFC in DMEM under 5% CO₂ gas at 37 °C in the dark each time. Cells were rinsed with 1 ml of phosphate-buffered saline (PBS) and then treated with 300 μ l of 0.1 M NaOH. An aliquot (10 μ l) of the NaOH-treated cell sample was withdrawn and used for protein concentration assay (Quick Start™ Bradford protein assay, Bio-Rad Laboratories, Inc., CA, USA), whereas the remaining cellular proteins were denatured by adding 3-fold volumes of solvent A [1 M ammonium acetate, 12.5% acetonitrile (v/v)]; solvent B [50 mM ammonium acetate, 80% acetonitrile (v/v)] (1:9 v/v) solution to the NaOH-treated cell sample. The prepared sample was centrifuged at 12,000 rpm for 10 min at 4 °C and subjected to high-performance liquid chromatography (HPLC) analysis performed as previously described with some modifications [14,15]. In brief, protoporphyrin IX (PpIX) and heme were separated using the HPLC system (Prominence, Shimadzu, Kyoto, Japan) equipped with a reversed-phase C₁₈ column (CAPCELL PAK, C18, SG300, 5 μ m, 4.6 mm \times 250 mm, Shiseido, Tokyo, Japan). Elution was started with 10% solvent A and 90% solvent B for 7 min. The elution flow throughout was kept constant at a rate of 2.0 ml/min. PpIX and heme were continuously detected using a spectrophotometer

at 404 nm. The concentration of the samples was estimated using calibration curves of reference standards.

2.4. Quantitative PCR

A High Pure RNA Isolation Kit (Roche Ltd., Mannheim, Germany) was used to extract total RNAs from the cells according to the manufacturer's protocol [16,17]. One microgram of total RNAs was reverse-transcribed to produce first strand cDNA using the PrimeScript RT reagent Kit with gDNA Eraser (TaKaRa, Shiga, Japan) according to the manufacturer's protocol [16,17]. The Thermal Cycler Dice Real Time System (TaKaRa, Shiga, Japan) was used for a 2-step reverse transcription polymerase chain reaction (PCR). The mRNA transcripts were quantified by SYBR Premix ExTaq (TaKaRa, Shiga, Japan). *HO-1* specific primers 5'-GCTCAAAAAGATTGCCA-GAA-3' and 5'-TCACATGGCATAAAGCCCTACA-3' were used. The other primers were purchased from TaKaRa. The amplification conditions included 30 s at 95 °C, a run of 45 cycles at 95 °C for 5 s, and 60 °C for 60 s followed by dissociation for 15 s at 95 °C and 30 s at 60 °C and then 15 s at 95 °C on the Thermal Cycler Dice Real Time System. The Thermal Cycler Dice Real Time System analysis software (TaKaRa, Shiga, Japan) was used to analyze the data. The Ct values (cycle threshold) were calculated by the crossing-point method, and the relative quantities of target mRNA expression levels were measured by the comparison of standard curve. The results for each sample were normalized to *ACTB*, the housekeeping gene.

2.5. Western blot analysis

Western blot analysis was performed as previously described with some modifications [18]. Cells were lysed in whole-cell lysis buffer A [50 mM Tris-HCl (pH 7.4), 1 mM DTT, 1% (v/v) Triton X-100, and protease inhibitor cocktail (Nacalai Tesque, Kyoto, Japan)]. Sodium dodecyl sulfate polyacrylamide gel electrophoresis

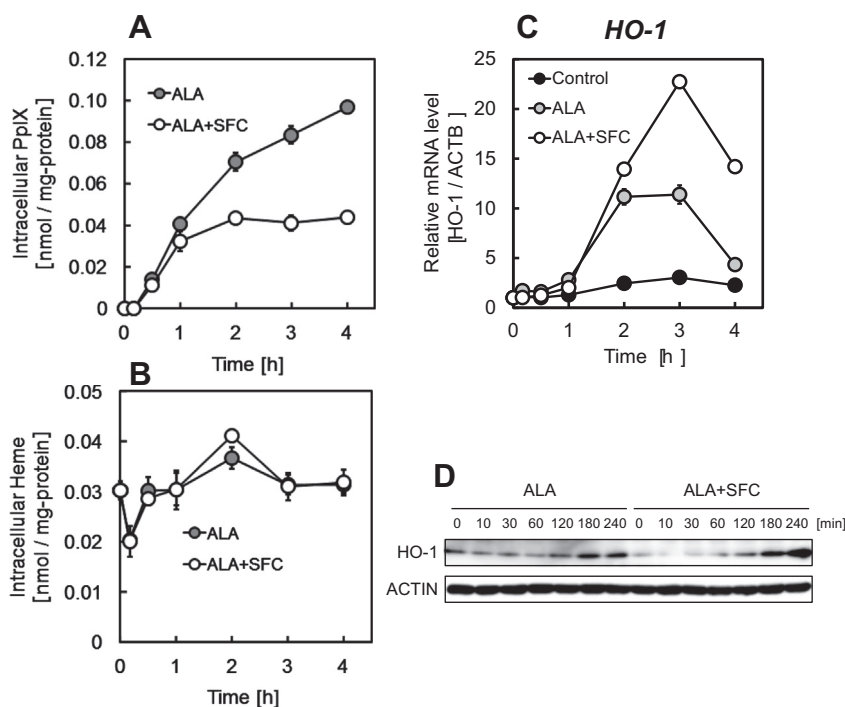


Fig. 1. Intracellular PpIX (A) and heme (B) accumulation and relative expression levels of *HO-1* mRNA (C) and *HO-1* protein (D) in WI-38 cells. Cells were incubated with 1 mM ALA and 0.5 mM SFC (white) or ALA alone (gray). PpIX and heme accumulation were determined by HPLC analysis. Expressions of *HO-1* mRNA and proteins were determined by real-time PCR analysis and Western blot analysis respectively. Results represent the mean \pm SD.

(SDS-PAGE) was used to separate 20 µg of lysates, which were then transferred to polyvinylidene difluoride membranes. The following primary antibodies were used to probe the blots: anti-ALAS1 (Abcam, Cambridge, UK, ab54758), anti-BMAL1 (Abcam, Cambridge, UK, ab3350, [19]), anti-HO-1 (Abcam, Cambridge, UK, ab13248, [20]), anti-NR1D1 (Abcam, Cambridge, UK, ab56754, [21]), anti-ACTIN (MP Biomedicals, Irvine, CA, USA, 69100), and anti-HDAC3 (Cell Signaling Technology, Beverly, MA, USA, 3949). For the second antibody, we used anti-mouse IgG HRP-conjugated antibody (Cell Signaling Technology, Beverly, MA, USA) and anti-rabbit IgG HRP conjugates (Santa Cruz Biotechnology) at 1:3000 dilution.

2.6. Nuclear extraction

An EpiQuik Nuclear Extraction Kit II (Epigentek Group Inc., Brooklyn, NY, USA) was used to isolate nuclear extracts according to the manufacturer's protocol. HPLC and Western blot analysis were used to determine heme accumulation and protein expression levels, respectively.

2.7. Serum stimulation

To synchronize circadian rhythms, serum stimulations were performed [22]. Cells (5×10^6 cells/well) were pre-incubated with or without 1 mM ALA and 0.5 mM SFC in DMEM supplemented with 10% FBS for 4 h. Then cells were collected as zero-point and started the collection as below. In the first 2 h, cells were stimulated by changing the medium to serum-rich (50% (v/v) horse serum) DMEM to synchronize circadian rhythms with or without 1 mM ALA and 0.5 mM SFC; this medium was then replaced with serum-free DMEM with or without 1 mM ALA and 0.5 mM SFC after 2 h. In ALA and SFC addition group, 1 mM ALA and 0.5 mM SFC were re-added after 24 h. At the indicated times after serum stimulation, the cells were washed twice with 1 ml of PBS. The cells were collected for RNA extraction at the indicated time points.

3. Results

In the present study, to accumulate intracellular heme, ALA was administered. Because heme is formed by the insertion of the iron ions into PpIX converted from ALA, the effect of administration of SFC (used as an iron ion source) was investigated. Fig. 1A shows intracellular PpIX accumulation after incubation with ALA and SFC or ALA alone. WI-38 cells were used in this study. Intracellular PpIX accumulation was observed by ALA incubation; however, PpIX accumulations were decreased by ALA/SFC co-incubation. This decreased PpIX was converted into heme by co-incubation of ALA and SFC. The intracellular heme level was measured using HPLC (Fig. 1B). Heme accumulation was slightly observed 2 h after ALA/SFC co-incubation; however, significant changes were not observed. Heme is known to be degraded by HO-1 immediately; therefore, HO-1 levels were investigated after ALA and SFC incubation. Fig. 1C shows mRNA expression levels of *HO-1*, and Fig. 1D shows protein expression levels of HO-1 measured using Western blotting after ALA and SFC incubation showing HO-1 levels were increased in ALA incubation and ALA/SFC co-incubation. These results indicate that heme was accumulated and degraded by HO-1. Furthermore, HO-1 level was higher in ALA and SFC co-incubation than in ALA incubation only, which indicated that heme accumulation in ALA and SFC co-incubation were higher than that in ALA incubation.

REV-ERB α functions after binding to heme as a ligand in the nucleus. Therefore, HPLC was used to determine intranuclear heme. Fig. 2A shows intranuclear heme concentrations after ALA

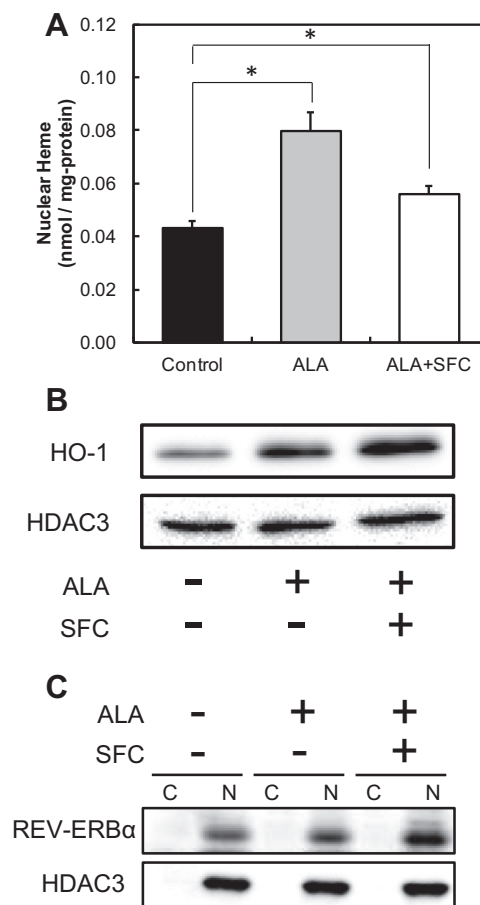


Fig. 2. Heme accumulation (A), HO-1 protein level (B) and REV-ERB α protein level (C) in nuclear fraction from WI-38 cells. REV-ERB α protein level in cytoplasmic (C) and nuclear (N) fractions were determined. Cells were incubated with 1 mM ALA and 0.5 mM SFC or ALA alone for 2 h. Results represent the mean \pm SD. Statistical significance of difference is indicated by * $p < 0.01$ as compared between paired groups. Statistical significance was calculated using Student's *t*-test.

incubation for 2 h with and without SFC. Intranuclear heme after ALA incubation was significantly increased. Intranuclear heme after ALA/SFC co-incubation was higher than that of the control but lower than that after only ALA incubation. These results indicate that excess heme was degraded by HO-1. In Fig. 2B, HO-1 protein expression levels in nuclear fractions showing apparent inductions of HO-1 are observed. Furthermore, protein expression levels of REV-ERB α in the nucleus were increased by ALA incubation and ALA/SFC co-incubation (Fig. 2C). In Fig. 2C, band intensities were quantified resulting ALA incubation resulted 1.1 times higher than without ALA incubation (control) and ALA/SFC co-incubation resulted 1.6 times higher than control. These results strongly indicate that ALA incubation and ALA/SFC co-incubation leads to heme accumulation in the nucleus and induces REV-ERB α .

REV-ERB α is known to regulate the expression of target genes, such as *PGC-1 α* , *ALAS1*, and *BMAL1*. The mRNA expression levels of *PGC-1 α* (Fig. 3A), *ALAS1* (Fig. 3B), and *BMAL1* (Fig. 3C) were measured using real-time PCR after ALA incubation and ALA/SFC co-incubation. The mRNA expression levels of all 3 genes were suppressed within 1 h. As shown in Fig. 2, the intranuclear heme level increases in 2 h, and heme is degraded by HO-1. This result is in good agreement with the results that target genes of REV-ERB α were suppressed within 1 h. Moreover, the protein expression levels of *ALAS1* and *BMAL1* were suppressed (Fig. 3D), which showed that REV-ERB α repressed the transcription of target genes.

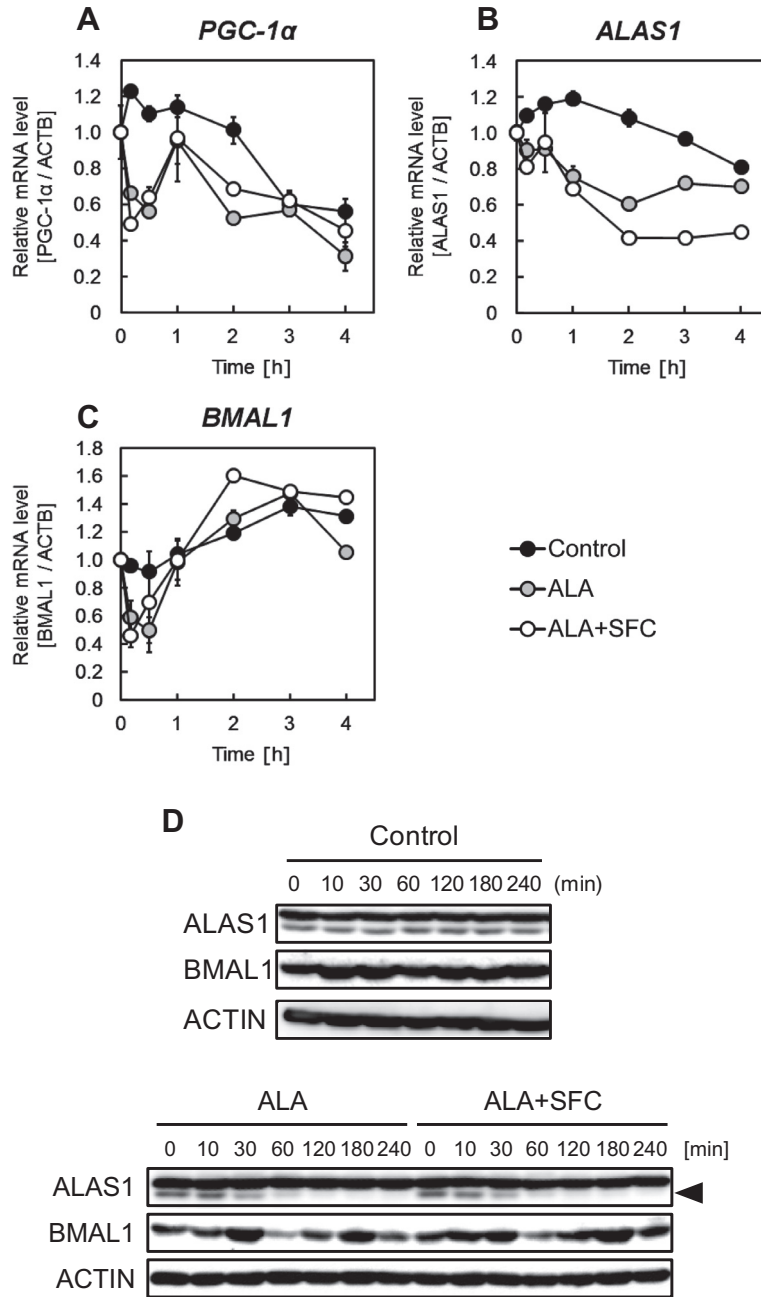


Fig. 3. Relative mRNA expression levels of *PGC-1α* (A), *ALAS1* (B), *BMAL1* (C) and protein expression levels (D) in WI-38 cells. Cells were incubated with 1 mM ALA and 0.5 mM SFC (white) or ALA alone (gray). Results represent the mean ± SD.

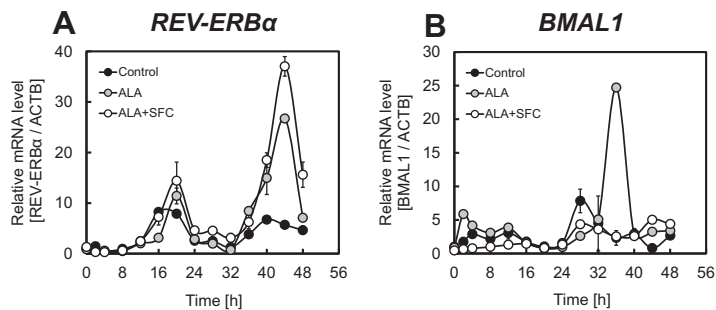


Fig. 4. Relative mRNA expression levels of *REV-ERBα* (A), and *BMAL1* (B) after 50% serum shock. Cells were incubated with 1 mM ALA and 0.5 mM SFC (white) or ALA alone (gray). Results represent the mean ± SD.

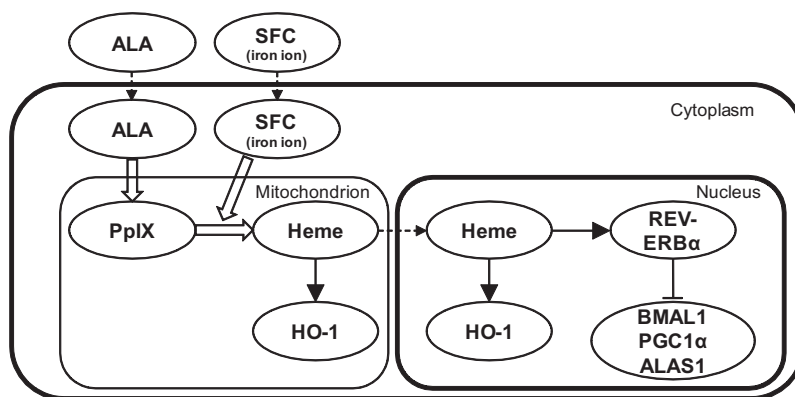


Fig. 5. Schematic illustration of the heme synthesis and the activation of REV-ERB α in this study.

From the above results, ALA incubation and ALA/SFC co-incubation activated the expression of REV-ERB α and suppressed its target genes, including clock genes. It is well known that serum stimulations cause synchronizing circadian rhythms and that the amplitude and cycle of circadian rhythms could be detected. Fig. 4 shows the effect of ALA incubation and ALA/SFC co-incubation on circadian rhythms after serum stimulations. The expression levels of REV-ERB α were increased by ALA incubation and ALA/SFC co-incubation (Fig. 4A). This result is in good agreement with that of Fig. 2C, which shows that REV-ERB α protein level was increased. Furthermore, the expression of BMAL1, a typical target gene of REV-ERB α , was suppressed by ALA/SFC co-incubation (Fig. 4B). Because these genes strongly affect circadian rhythms, ALA and ALA/SFC incubation could affect circadian rhythms.

4. Discussion

Since the mouse Clock gene was discovered [23], many studies on circadian rhythms have been performed. Recent studies have shown that abnormal circadian rhythms increase the risk for diabetes, bipolar disorder, cancer, and coronary events [24–27]. These results strongly suggest that the shift to normal circadian rhythms from abnormal circadian rhythms is quite important. Kaasik et al. showed that addition of hemin, the Fe(III) form of heme, affected circadian rhythms [28]. However, the addition of hemin leads to increased free-heme and cytotoxicity [29]. From the above results, the administration of heme or hemin to humans is quite difficult.

ALA is used in various fields, especially cancer diagnosis (photodynamic diagnosis) and cancer therapy (photodynamic therapy) [10]. There are no reports of toxic side effects caused by ALA administration. It is well known that ALA is converted into heme and that heme has an important role in the activation of REV-ERB α . Therefore, in the present study, the effects of ALA on circadian rhythms via REV-ERB α were investigated. ALA incubation led to the activation of heme biosynthesis and suppression of REV-ERB α target genes (Fig. 5). Moreover, these effects were enhanced by ALA/SFC co-incubation, and ALA/SFC co-incubation affected the oscillation and phase of core clock genes. These phenomena were supported by increased heme level in the nucleus. To our knowledge, this is the first attempt to regulate circadian rhythms using ALA.

Because the target gene of REV-ERB α is known to cause several diseases, drug design strategies that modulate REV-ERB α activity are expanding [30–32]. Laura et al. showed that SR9009a and SR9011 acted as strong agonists and modulated several clock genes [32]. Because ALA also modulated REV-ERB α ; therefore, ALA could be a new candidate of REV-ERB α modulator that regulates several

diseases. However, further research is required to examine the actual contribution of ALA *in vivo* using experimental animal models.

References

- [1] Vaze, K.M. and Sharma, V.K. (2013) On the adaptive significance of circadian clocks for their owners. *Chronobiol. Int.* 30, 413–433.
- [2] Lowrey, P.L. and Takahashi, J.S. (2004) Mammalian circadian biology: elucidating genome-wide levels of temporal organization. *Annu. Rev. Genomics Hum. Genet.* 5, 407–441.
- [3] Gachon, F., Nagoshi, E., Brown, S.A., Ripperger, J. and Schibler, U. (2004) The mammalian circadian timing system: from gene expression to physiology. *Chromosoma* 113, 103–112.
- [4] Reppert, S.M. and Weaver, D.R. (2002) Coordination of circadian timing in mammals. *Nature* 418, 935–941.
- [5] Ripperger, J.A. and Schibler, U. (2006) Rhythmic CLOCK-BMAL1 binding to multiple E-box motifs drives circadian Dbp transcription and chromatin transitions. *Nat. Genet.* 38, 369–374.
- [6] Siepka, S.M., Yoo, S.H., Park, J., Lee, C. and Takahashi, J.S. (2007) Genetics and neurobiology of circadian clocks in mammals. *Cold Spring Harbor Symp. Quant. Biol.* 72, 251–259.
- [7] Preitner, N., Damiola, F., Lopez-Molina, L., Zakany, J., Duboule, D., Albrecht, U., et al. (2002) The orphan nuclear receptor REV-ERB α controls circadian transcription within the positive limb of the mammalian circadian oscillator. *Cell* 110, 251–260.
- [8] Yin, L., Wu, N., Curtin, J.C., Qatanani, M., Szewergold, N.R., Reid, R.A., et al. (2007) REV-ERB α , a heme sensor that coordinates metabolic and circadian pathways. *Science* 318, 1786–1789.
- [9] Raghuram, S., Stayrook, K.R., Huang, P., Rogers, P.M., Nosie, A.K., McClure, D.B., et al. (2007) Identification of heme as the ligand for the orphan nuclear receptors REV-ERB α and REV-ERB β . *Nat. Struct. Mol. Biol.* 14, 1207–1213.
- [10] Ishizuka, M., Abe, F., Sano, Y., Takahashi, K., Inoue, K., et al. (2011) Novel development of 5-aminolevulinic acid (ALA) in cancer diagnoses and therapy. *Int. Immunopharmacol.* 11, 358–365.
- [11] Ogura, S., Hagiya, Y., Tabata, K., Kamachi, T. and Okura, I. (2012) Improvement of tumor localization of photosensitizers for photodynamic therapy and its application for tumor diagnosis. *Curr. Top. Med. Chem.* 12, 176–184.
- [12] Stummer, W., Pichlmeier, U., Meinel, T., Wiestler, O.D., Zanella, F., et al. (2006) Fluorescence-guided surgery with 5-aminolevulinic acid for resection of malignant glioma: a randomised controlled multicentre phase III trial. *Lancet Oncol.* 7, 392–401.
- [13] Ogura, S., Maruyama, K., Hagiya, Y., Sugiyama, Y., Tsuchiya, K., et al. (2011) The effect of 5-aminolevulinic acid on cytochrome c oxidase activity in mouse liver. *BMC Res. Notes* 4, 66.
- [14] Ishizuka, M., Hagiya, Y., Mizokami, Y., Honda, K., Tabata, K., et al. (2011) Porphyrins in urine after administration of 5-aminolevulinic acid as a potential tumor marker. *Photodiagn. Photodyn. Ther.* 8, 328–331.
- [15] Inoue, K., Ota, U., Ishizuka, M., Kawada, C., Fukuhara, H., et al. (2013) Porphyrins as urinary biomarkers for bladder cancer after 5-aminolevulinic acid (ALA) administration: The potential of photodynamic screening for tumors. *Photodiagn. Photodyn. Ther.* 10, 484–489.
- [16] Hagiya, Y., Endo, Y., Yonemura, Y., Takahashi, K., Ishizuka, M., et al. (2012) Pivotal roles of peptide transporter PEPT1 and ATP-binding cassette (ABC) transporter ABCG2 in 5-aminolevulinic acid (ALA)-based photocytotoxicity of gastric cancer cells *in vitro*. *Photodiagn. Photodyn. Ther.* 9, 204–214.
- [17] Hagiya, Y., Fukuhara, H., Matsumoto, K., Endo, Y., Nakajima, M., et al. (2013) Expression levels of PEPT1 and ABCG2 play key roles in 5-aminolevulinic acid (ALA)-induced tumor-specific protoporphyrin IX (PpIX) accumulation in bladder cancer. *Photodiagn. Photodyn. Ther.* 10, 288–295.

- [18] Ogura, S., Kaneko, K., Miyajima, S., Ohshima, K., Yamaguchi, K., et al. (2008) Proneurotensin/neuromedin N secreted from small cell lung carcinoma cell lines as a potential tumor marker. *Proteomics Clin. Appl.* 2, 1620–1627.
- [19] Shende, V.R., Neuendorff, N. and Earnest, D.J. (2013) Role of miR-142-3p in the post-transcriptional regulation of the clock gene *BMAL1* in the mouse *SCN*. *PLoS One* 8 (6), e65300.
- [20] Ivanov, A.V., Smirnova, O.A., Ivanova, O.N., Masalova, O.V., Kochetkov, S.N., et al. (2011) Hepatitis C virus proteins activate NRF2/ARE pathway by distinct ROS-dependent and independent mechanisms in HUH7 cells. *PLoS One* 6 (9), e24957.
- [21] Vieira, E., Marroquí, L., Figueroa, A.L.C., Merino, B., Fernandez-Ruiz, R., et al. (2013) Involvement of the clock gene REV-ERB alpha in the regulation of glucagon secretion in pancreatic alpha-cells. *PLoS One* 8 (7), e69939.
- [22] Balsalobre, A., Damiola, F. and Schibler, U. (1998) A serum shock induces circadian gene expression in mammalian tissue culture cells. *Cell* 93, 929–937.
- [23] Vitaterna, M.H., King, D.P., Chang, A.M., Kornhauser, J.M., Lowrey, P.L., et al. (1994) Mutagenesis and mapping of a mouse gene, *clock*, essential for circadian behavior. *Science* 264, 719–725.
- [24] Marcheva, B., Ramsey, K.M., Buhr, E.D., Kobayashi, Y., Su, H., et al. (2010) Disruption of the clock components *CLOCK* and *BMAL1* leads to hypoinsulinaemia and diabetes. *Nature* 466, 627–631.
- [25] Yang, S., Van Dongen, H.P., Wang, K., Berrettini, W. and Bućan, M. (2009) Assessment of circadian function in fibroblasts of patients with bipolar disorder. *Mol. Psychiatry* 14, 143–155.
- [26] Schernhammer, E.S., Laden, F., Speizer, F.E., Willett, W.C., Hunter, D.J., et al. (2001) Rotating night shifts and risk of breast cancer in women participating in the nurses' health study. *J. Natl. Cancer Inst.* 93, 1563–1568.
- [27] Straif, K., Baan, R., Grosse, Y., Secretan, B., El Ghissassi, F., et al. (2007) Carcinogenicity of shift-work, painting, and fire-fighting. *Lancet Oncol.* 8, 1065–1066.
- [28] Kaasik, K. and Lee, C.C. (2004) Reciprocal regulation of haem biosynthesis and the circadian clock in mammals. *Nature* 430, 467–471.
- [29] Kumar, S. and Bandyopadhyay, U. (2005) Free heme toxicity and its detoxification systems in human. *Toxicol. Lett.* 157, 175–188.
- [30] Grant, D., Yin, L., Collins, J.L., Parks, D.J., Orband-Miller, L.A., et al. (2010) GSK4112, a small molecule chemical probe for the cell biology of the nuclear heme receptor REV-ERB α . *ACS Chem. Biol.* 5, 925–932.
- [31] Kojetin, D., Wang, Y., Kamenecka, T.M. and Burris, T.P. (2011) Identification of SR8278, a synthetic antagonist of the nuclear heme receptor REV-ERB. *ACS Chem. Biol.* 6, 131–134.
- [32] Solt, L.A., Wang, Y., Banerjee, S., Hughes, T., Kojetin, D.J., et al. (2012) Regulation of circadian behaviour and metabolism by synthetic REV-ERB agonists. *Nature* 485, 62–68.