

Low to Moderate Dose Anthracycline-Based Chemotherapy Is Associated With Early Noninvasive Imaging Evidence of Subclinical Cardiovascular Disease

Brandon C. Drafts, MD,* Katie M. Twomley, MD,* Ralph D'Agostino, JR, PhD,†
Julia Lawrence, MD,‡ Nancy Avis, PhD,§ Leslie R. Ellis, MD,‡ Vinay Thohan, MD,*
Jennifer Jordan, PhD,¶ Susan A. Melin, MD,‡ Frank M. Torti, MD,‡
William C. Little, MD,* Craig A. Hamilton, PhD,¶ W. Gregory Hundley, MD*||
Winston-Salem, North Carolina

JACC: CARDIOVASCULAR IMAGING CME

CME Editor: Ragavendra R. Baliga, MD

This article has been selected as this issue's CME activity, available online at <http://imaging.onlinejacc.org> by selecting the CME tab on the top navigation bar.

Accreditation and Designation Statement

The American College of Cardiology Foundation (ACCF) is accredited by the Accreditation Council for Continuing Medical Education (ACCME) to provide continuing medical education for physicians.

The ACCF designates this Journal-based CME activity for a maximum of 1 *AMA PRA Category 1 Credit(s)*[™]. Physicians should only claim credit commensurate with the extent of their participation in the activity.

Method of Participation and Receipt of CME Certificate

To obtain credit for this CME activity, you must:

1. Be an ACC member or *JACC: Cardiovascular Imaging* subscriber.
2. Carefully read the CME-designated article available online and in this issue of the journal.
3. Answer the post-test questions. At least 2 out of the 3 questions provided must be answered correctly to obtain CME credit.
4. Complete a brief evaluation.
5. Claim your CME credit and receive your certificate electronically by following the instructions given at the conclusion of the activity.

CME Objective for This Article: At the end of this activity the reader should be able to: 1) gain familiarity with the early effects of low doses of anthracycline-based chemotherapy on cardiac structure and function; 2) gain familiarity with the early effects of low doses of anthracycline-based chemotherapy on vascular function; 3) gain familiarity with the early effects of low doses of anthracycline-based chemotherapy on patient perceived quality of life (QOL); and 4) understand the relationship between doses of anthracyclines (measured in Doxorubicin equivalents) and the onset of cardiac and vascular dysfunction during and after treatment for cancer.

CME Editor Disclosure: *JACC: Cardiovascular Imaging* CME Editor Ragavendra R. Baliga, MD, has reported that he has no relationships to disclose.

Author Disclosure: Dr. Hundley has received research grant support from the National Institutes of Health, Siemens, Bracco, and Prova. All other authors have reported that they have no relationships relevant to the contents of this paper to disclose.

Medium of Participation: Print (article only); online (article and quiz).

CME Term of Approval:

Issue Date: August 2013

Expiration Date: July 31, 2014

Low to Moderate Dose Anthracycline-Based Chemotherapy Is Associated With Early Noninvasive Imaging Evidence of Subclinical Cardiovascular Disease

OBJECTIVES The goal of this study was to determine if low to moderate doses of anthracycline-based chemotherapy (Anth-bC) are associated with subclinical cardiovascular (CV) injury.

BACKGROUND Cancer survivors who receive Anth-bC experience premature CV events. It is unknown whether low to moderate doses of anthracyclines promote early subclinical CV disease manifested by deteriorations in left ventricular ejection fraction (LVEF) or increases in aortic stiffness, or if these doses are associated with changes in quality of life (QOL).

METHODS In 53 men and women with breast cancer, leukemia, or lymphoma, we assessed left ventricular volumes, LVEF, circumferential strain, aortic pulse wave velocity, late gadolinium enhancement, serum B-type natriuretic peptide, troponin I, and the impact of treatment on QOL before and 1, 3, and 6 months after receipt of Anth-bC.

RESULTS Participants averaged 50 ± 2 (range 19 to 80) years in age, 58% were women, 17% were black, and they each received a range of 50 to 375 mg/m² of doxorubicin-equivalent chemotherapy. Left ventricular end-systolic volume (48 ± 3 ml to 54 ± 3 ml; $p = 0.02$), left ventricular strain (-17.7 ± 0.4 to -15.1 ± 0.4 ; $p = 0.0003$), pulse wave velocity (6.7 ± 0.5 m/s to 10.1 ± 1 m/s; $p = 0.0006$), and QOL deterioration (15.4 ± 3.3 to 28.5 ± 3.9 ; $p = 0.008$) increased, whereas LVEF ($58 \pm 1\%$ to $53 \pm 1\%$; $p = 0.0002$) decreased within 6 months after low to moderate doses of Anth-bC. All findings persisted after accounting for age, gender, race (white/black), doxorubicin-equivalent dose, doxorubicin administration technique, comorbidities associated with CV events, and cancer diagnosis ($p = 0.02$ to 0.0001 for all). There were no new late gadolinium enhancement findings after 6 months.

CONCLUSIONS In these study patients, low to moderate doses of Anth-bC were associated with the early development of subclinical abnormalities of cardiac and vascular function that in other populations are associated with the future occurrence of CV events. (J Am Coll Cardiol Img 2013;6:877-85) © 2013 by the American College of Cardiology Foundation

From the *Department of Internal Medicine, Section of Cardiology, Wake Forest School of Medicine, Winston-Salem, North Carolina; †Department of Biostatistical Sciences, Wake Forest School of Medicine, Winston-Salem, North Carolina; ‡Department of Internal Medicine, Section Hematology and Oncology, Wake Forest School of Medicine, Winston-Salem, North Carolina; §Department of Public Health Sciences, Wake Forest School of Medicine, Winston-Salem, North Carolina; ||Department of Radiology, Wake Forest School of Medicine, Winston-Salem, North Carolina; and ¶Department of Biomedical Engineering, Wake Forest School of Medicine, Winston-Salem, North Carolina. This research was supported in part by grants from the National Institutes of Health (R33CA12196, R01HL076438, M01RR07122, and P30CA012197) and a grant (BCTR0707769) from the Susan G. Komen Foundation. Dr. Hundley has received research grant support from the National Institutes of Health, Siemens, Bracco, and Prova. All other authors have reported that they have no relationships relevant to the contents of this paper to disclose.

Manuscript received July 6, 2012; revised manuscript received November 1, 2012, accepted November 16, 2012.

Although anthracycline-based chemotherapeutic regimens for breast and hematologic malignancies have improved cancer-related survival, studies have recognized an unanticipated increase in premature cardiovascular (CV) events among individuals receiving these regimens (1–4). Today, CV events including systolic or diastolic left ventricular dysfunction, congestive heart failure, stroke, and myocardial ischemia and infarction are the second leading cause of premature morbidity and mortality among those surviving >5 years after their initial diagnosis and treatment for

See page 886

breast cancer (2), Hodgkin disease, or non-Hodgkin lymphoma (3,4). Currently, anthracycline-based chemotherapeutic agents are typically limited to cumulative doses ≤ 450 mg/m² to reduce the incidence of clinical CV events (5), but to date, studies have not addressed whether lower doses of anthracyclines administered in the course of cancer treatment could promote early subclinical CV injury that in other populations (e.g., those with hypertension or atherosclerosis) are associated with future CV events.

Accordingly, we hypothesized that the administration of low to moderate doses of anthracycline-based chemotherapy (Anth-bC) would be associated with the early onset of subclinical CV disease that in other populations is associated with future CV events. To address this hypothesis, we measured imaging, biochemical, and quality of life (QOL) markers that have been used in other, larger population-based studies to identify subclinical CV disease predictive of adverse CV outcomes. We performed these measurements in a cohort of subjects recently diagnosed with either breast cancer or a hematologic malignancy who were scheduled to receive low to moderate doses of Anth-bC for the first time.

METHODS

Study population and design. This study was approved by the institutional review board of the Wake Forest School of Medicine and was funded by the National Cancer Institute (R33CA12196). All participants provided witnessed, written informed consent. The study population consisted of 53 participants who were scheduled to receive Anth-bC for the first time. They were consecutively recruited over a 1.5 year period from the hematology/oncology outpatient clinics and inpatient hospital facilities within the Comprehensive Cancer Center at Wake

Forest School of Medicine. Participants were asked to identify their race/ethnicity when enrolled in the study and this data was utilized as a variable in reporting participant demographic characteristics.

Cardiac magnetic resonance (CMR), serum biomarkers, and questionnaires assessing quality of life (QOL) were performed according to specifications used in other large National Institutes of Health sponsored population based studies of CV disease such as MESA (Multi-Ethnic Study of Atherosclerosis) (6). These markers were acquired before cancer treatment, and at 1, 3, and 6 months after initiation of low to moderately dosed Anth-bC. The 1, 3, and 6 month CMR imaging and serum biomarker acquisitions were obtained early each morning prior to the scheduled administration of chemotherapy. Analyses of all images were performed by individuals blinded to all study participant identifiers, including previous imaging and biomarker results (i.e., a blinded, unpaired read). Participants were ineligible for enrollment if they had a contraindication to CMR (implanted metal or electronic devices). No participants received radiation therapy during the study.

CMR technique and measurements.

DETERMINATION OF LEFT VENTRICULAR VOLUMES AND EJECTION FRACTION. All participants underwent scanning using a 1.5-T Magnetom Avanto Scanner (Siemens, Erlangen, Germany). Left ventricular volumes and left ventricular ejection fraction (LVEF) were measured according to previously published methods (7) by using cine white blood steady-state free precession techniques with a 256 × 128 matrix, a 40-cm field of view, a 10-ms repetition time (TR), a 4-ms echo time (TE), a 20-degree flip angle, a slice 8-mm thick, and a 40-ms temporal resolution. Ventricular volumes were also indexed to body surface area.

LEFT VENTRICULAR CIRCUMFERENTIAL STRAIN.

Strain imaging was performed according to previously published methods using the spatial modulation of magnetization technique at the middle papillary muscle level of the left ventricular short axis as identified on the 4-chamber view (8). Imaging parameters included a 34-cm field of view, a 10-ms TR, a 4-ms TE, a 20-degree flip angle, a slice 8-mm thick, a 256 × 160 matrix, and a 32-kHz bandwidth. Mean mid-wall left ventricular circumferential strain was measured according to previously published methods using harmonic phase

ABBREVIATIONS AND ACRONYMS

Anth-bC	= anthracycline-based chemotherapy
BNP	= B-type natriuretic peptide
CMR	= cardiac magnetic resonance
CV	= cardiovascular
MLHFQ	= Minnesota Living with Heart Failure Questionnaire
LVEDV	= left ventricular end-diastolic volume
LVEF	= left ventricular ejection fraction
LVESV	= left ventricular end-systolic volume
PWV	= pulse wave velocity
QOL	= quality of life
TE	= echo time
Tnl	= troponin I
TR	= repetition time

Age, yrs	50 ± 2
Women	58
Height, cm	170 ± 2
Weight, kg	84 ± 3
Body mass index, kg/m ²	29.6 ± 1.6
Race, white/black	83/17
Cardiovascular risk factors	
Coronary artery disease	8
Diabetes	13
Hypertension	40
Hyperlipidemia	25
Smoking	45
Medications	
Beta-blocker	17
Calcium antagonist	8
Angiotensin-converting enzyme inhibitor	26
Angiotensin receptor blocker	6
Vasodilator	4
Statin	21
Diuretic	26
Values are mean ± SE or %.	

analyses (HARP, Diagnosoft, Inc., Cary, North Carolina) (9).

Aortic stiffness. Thoracic aortic pulse wave velocity (PWV) was determined according to previously published methods (6,10). Phase-contrast CMR imaging parameters included a 34- to 36-cm field of view, a 256 × 912 matrix, a 6-ms TR, a 3- to 5-ms TE, a 15- to 20-degree flip angle, a slice 8-mm thick, through-plane velocity encoding of 150 cm/s, temporal resolution of 25 to 35 ms, GRAPPA acceleration factor of 2, and 4 to 8 lines of K-space segmentation with 30 frames reconstructed. The distance between ascending and descending thoracic aorta was obtained by tracing the centerline of the aortic lumen on a sagittal localizing image. The transit time of the flow wave was determined as the time delay between the ascending and descending aortic waveforms at 50% of their respective peaks (10).

Late gadolinium enhancement. Late gadolinium enhancement imaging was performed according to previously published methods (11). Inversion time sequences were performed 10 min after gadolinium injection, with an inversion time to provide a uniformly dark noninfarcted myocardium. Multislice short-axis inversion recovery late gadolinium enhancement images were obtained scanning the heart base to the left ventricular apex. Scan parameters included a 784-ms TR, a 3.3-ms TE, a 130-Hz

bandwidth, 36 cm field of view, and 317 × 390 matrix.

Serum B-type natriuretic peptide and troponin-I. At each study visit, patients underwent venipuncture for blood sampling, which was performed before receipt of chemotherapy. Serum troponin-I (TnI) (Beckman Coulter Inc., Brea, California) and B-type natriuretic peptide (BNP) (Phoenix Pharmaceuticals, Inc., Burlingame, California) levels were assessed according to previously published methods (12,13). Serum TnI values ≤0.06 ng/ml were considered negative for myocardial injury; values of 0.06 ≤ x <1.0 ng/ml were considered subclinical, and values ≥1.0 ng/ml were considered as a clinical injury (14).

Impact on QOL. At each study visit, patients completed the Minnesota Living with Heart Failure Questionnaire (MLHFQ) to assess the impact of cancer treatment on their QOL (15). This well-established questionnaire contains 21 items that assess key areas of physical, emotional, social, and mental dimensions of QOL. Respondents rate each item on a 6-point Likert scale ranging from 0 = no impact to 5 = very much of an impact.

Statistical analysis. Descriptive statistics, including mean ± SEs for continuous measures and counts and percentages for categorical measures, were calculated for the study participants. A series of repeated measures mixed models were then fit to examine the impact of time on the outcomes of interest; participants in these models were treated as random effects. Time was entered into the models as a random effect and considered as a continuous, time-varying measure. A series of pre-defined covariates were assessed to determine whether the time effect on the outcome of interest was affected by the covariate. To do this, time by covariate interactions were fit separately for each covariate. These covariates included age, race, gender, doxorubicin-equivalent chemotherapy dose (16), type of cancer, the number of CV risk factors present at baseline (e.g., hypertension, diabetes, hyperlipidemia, tobacco use, history of myocardial infarction or revascularization), and associated chemotherapy (defined as cyclophosphamide, trastuzumab, or all other agents). If the time by risk factor interaction was not significant, then mixed models were fit including only the main effects for time and the risk factor. In particular, for left ventricular volumes, PWV, and strain, in which differences between men and women were expected, we examined whether the time effects were consistent for men and women.

All analyses were performed by personnel within the Department of Biostatistics in the Wake Forest School of Medicine using SAS version 9.2 (SAS

Institute, Inc., Cary, North Carolina); p values ≤ 0.05 were considered significant.

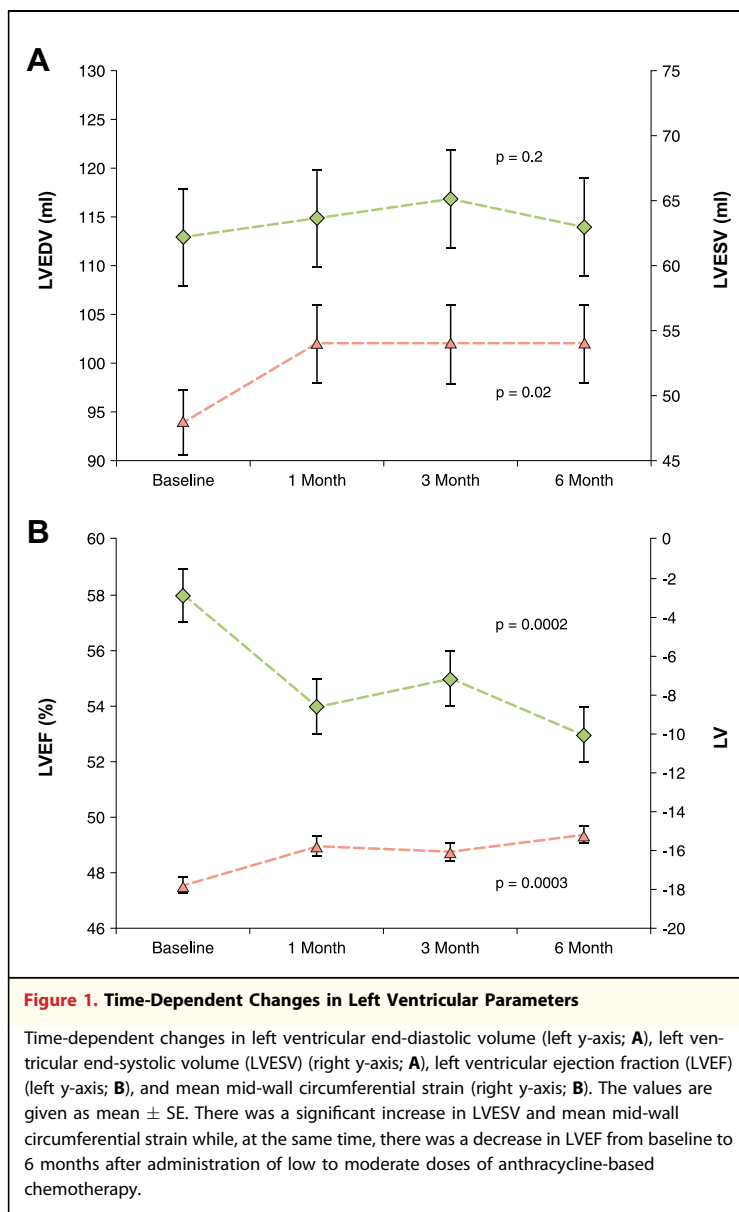
RESULTS

Demographic data from the 53 participants are displayed in Table 1. Their mean age was 50 ± 2 years (range 19 to 80 years). The majority of participants were women (58%) and of white race (83%). Four participants had known pre-existing coronary artery disease with previous revascularization. Overall, 42%, 32%, 24%, and 2% of the participants had been diagnosed with breast cancer, lymphoma, leukemia, and myelodysplastic syndrome, respectively.

Doxorubicin was administered to 37 participants (240 mg/m^2 median cumulative dose; range 50 to 375 mg/m^2) and daunorubicin to 16 participants (180 mg/m^2 median cumulative dose; range 36 to 500 mg/m^2). The anthracycline doxorubicin-equivalent doses for all participants ranged from 50 to 375 mg/m^2 . The majority of participants (92%) received the anthracycline as a 15-min intravenous infusion during consecutive days. The remaining 4 participants received the anthracycline as a 24-h intravenous infusion as part of their chemotherapy regimen.

Left ventricular end-diastolic volume (LVEDV) remained similar ($113 \pm 5 \text{ ml}$ at baseline and $114 \pm 5 \text{ ml}$ at study end) throughout the study ($p = 0.2$) (Fig. 1A). Left ventricular end-systolic volume (LVESV) increased from $48 \pm 3 \text{ ml}$ to $54 \pm 3 \text{ ml}$ ($p = 0.02$) during the study. As a result of these changes in left ventricular volumes, LVEF diminished (from $58 \pm 1\%$ to $53 \pm 1\%$ [$p = 0.0002$]) (Fig. 1B) over 6 months. At baseline, 11% of the cohort ($n = 6$) exhibited an LVEF $< 50\%$, but this increased to 34% after completion of Anth-bC ($p = 0.002$). Of the 47 participants who had an LVEF $> 50\%$ at baseline, 26% experienced a LVEF of $< 50\%$ (a metric used clinically to distinguish mildly impaired left ventricular systolic dysfunction) 6 months after receipt of Anth-bC ($p < 0.01$). The decline in LVEF also paralleled a 6-month increase in left ventricular mean mid-wall circumferential strain (less negative values reflect worsening regional systolic function [-17.7 ± 0.4 to -15.1 ± 0.4 ; $p = 0.0003$] [Fig. 1B]).

PWV increased steadily from $6.7 \pm 0.5 \text{ m/sec}$ to $10.1 \pm 1.0 \text{ m/s}$ ($p = 0.0006$) after Anth-bC administration (Fig. 2). Adjusting for baseline heart rate had a minimal impact on the change in PWV over time. However, after adjusting for baseline systolic blood pressure in a fitted model, participants with a higher systolic blood pressure



had a higher PWV at baseline, in addition to a faster increase in PWV, over time compared with participants with lower systolic blood pressure ($p = 0.036$).

Three participants with previous myocardial infarction and revascularization had late gadolinium enhancement imaging consistent with myocardial scar. Results of all other baseline and 6-month late gadolinium enhancement studies were unremarkable. Serum BNP did not increase and trended ($p = 0.2$) toward a decrease throughout the study ($63 \pm 14 \text{ pg/ml}$ at baseline and $46 \pm 4 \text{ pg/ml}$ at study end). Serum TnI averaged $0.02 \pm 0.003 \text{ ng/ml}$ at baseline and $0.04 \pm 0.01 \text{ ng/ml}$ at the 6-month

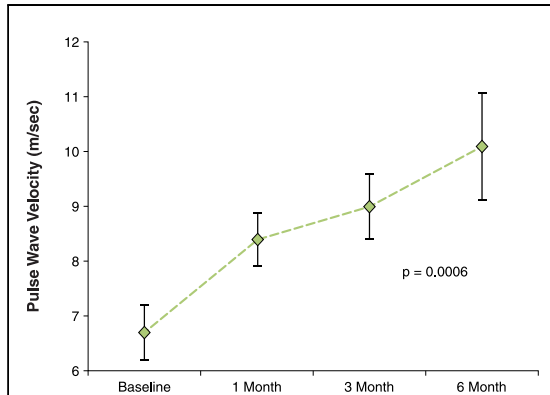


Figure 2. Time-Dependent Changes in Pulse Wave Velocity

The values are given as mean \pm SE. There was a significant increase in pulse wave velocity from baseline to 6 months after administration of low to moderate doses of anthracycline-based chemotherapy.

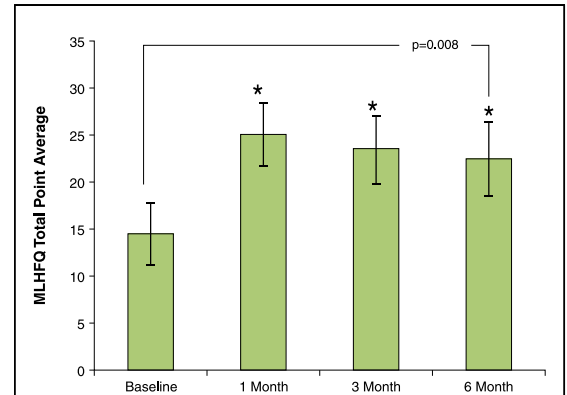


Figure 3. Time-Dependent Changes in QOL

Quality of life (QOL) was assessed using the Minnesota Living with Heart Failure Questionnaire (MLHFQ). The total point mean \pm SE values are shown. There was a significant increase in the total score, indicating a negative impact on QOL, from baseline to 1 month after administration of low to moderate doses of anthracycline-based chemotherapy, which was maintained through 6 months.

visit ($p = 0.12$). More importantly, 26% of the cohort exhibited evidence of subclinical cardiac injury ($0.06 < \text{TnI} \leq 1.0$) on the morning before their final dose of anthracycline.

The negative impact of low to moderate Anth-bC on QOL significantly increased over time ($p = 0.008$). Mean score on the MLHFQ was 15.4 ± 3.3 at baseline, 27.8 ± 3.5 after treatment, and 28.5 ± 3.9 at study end (Fig. 3). The change observed in QOL trended toward a positive association with the change in LVEF ($r = 0.085$) and myocardial strain ($r = 0.24$), but neither was found to be statistically significant ($p = 0.64$ and 0.17 , respectively).

Measures of LVESV, LVEF, left ventricular strain, PWV, and QOL remained different at the 6-month visit relative to baseline values after accounting for CV risk factors regardless of the number of comorbid conditions experienced by a participant ($p = 0.02$ to 0.0001 for all) and after accounting for the presence of baseline late gadolinium enhancement imaging ($p = 0.02$ to 0.0001). Abnormal trends in these parameters (LVESV, LVEF, left ventricular strain, PWV, and QOL) also persisted at the end of the study relative to baseline after adjusting for race only ($p = 0.02$ to 0.0002 for all), gender only ($p = 0.015$ to 0.0001 for all), cancer diagnosis only ($p = 0.018$ to 0.0002 for all), anthracycline administration protocol only ($p = 0.02$ to 0.0002 for all), and in a model that adjusted for gender, age, race, and doxorubicin-equivalent cumulative dose ($p = 0.016$ to 0.0001 for all).

The cumulative doses of doxorubicin-equivalent chemotherapy administered in this study did not

correlate with greater reductions in LVEF or increases in PWV (Fig. 4). This finding was similar for myocardial strain ($p = 0.12$). Thirty-nine participants (74%) received cyclophosphamide. The addition of cyclophosphamide, trastuzumab, or all other adjuvant chemotherapy agents in combination with anthracyclines was not associated with larger decrements in LVEF or increases in PWV or strain.

DISCUSSION

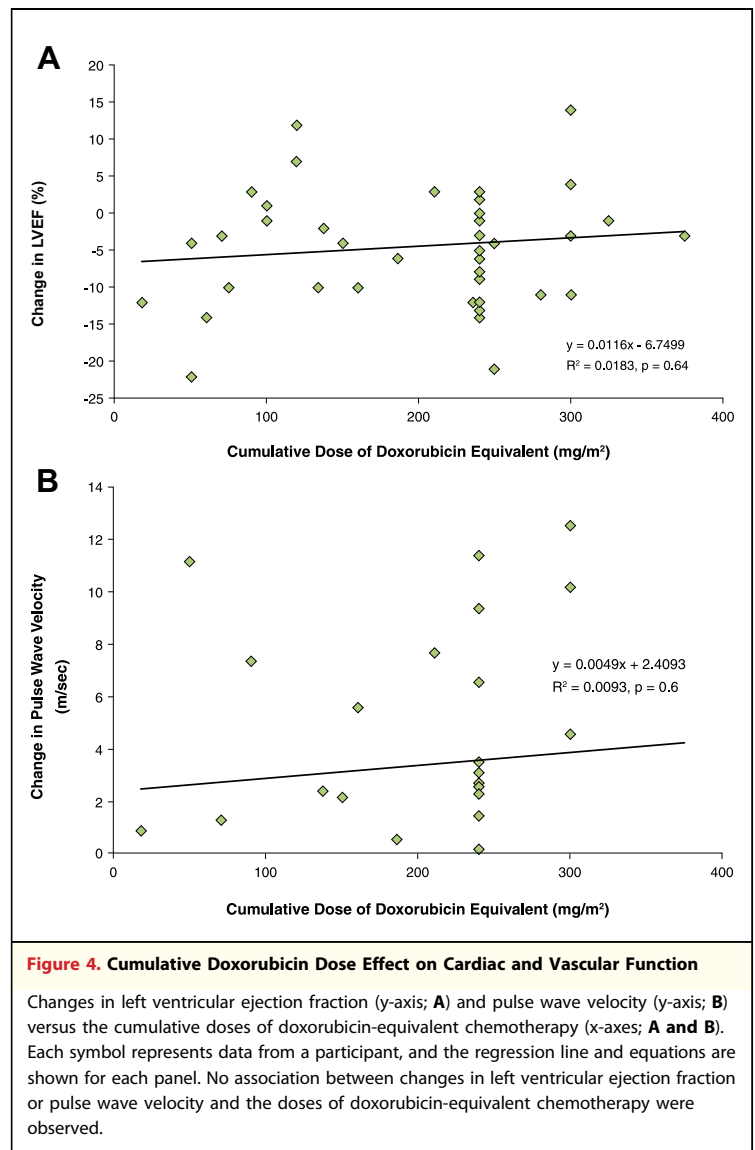
Our results demonstrate 5 important findings. First, measures of left ventricular systolic performance (LVESV, LVEF, and mean mid-wall circumferential strain) deteriorated early and remained abnormal 6 months after initiation of low to moderate doses of Anth-bC (Fig. 1). Second, participants exhibited an increase in PWV (a measure of aortic stiffening), which occurred early during the first 6 months after initiation of low to moderate doses of Anth-bC (Fig. 2). Third, we did not detect new infarcts or fibrosis by late gadolinium enhancement that were commensurate with the other subclinical abnormalities that occurred during the 6 months of receipt of Anth-bC. Fourth, these changes in subclinical abnormalities of cardiac and vascular function occurred in parallel with worsening effects on physical, emotional, social, and mental dimensions of QOL (Fig. 3), but due to our small sample size, we did not appreciate a significant association between CV function and QOL. Finally, the magnitude of subclinical deterioration

in cardiac and vascular function is not correlated with the total amount of anthracycline received after treatment for cancer (Fig. 4).

In the 1970s, investigators recognized that relatively high doses (>500 mg/m²) of anthracyclines were associated with increases in morbidity and mortality related to overt clinical heart failure (4). Over the past 10 years, premature CV events have emerged in long-term survivors of adult and pediatric lymphoma and leukemia and in women with breast cancer (2-4). Individuals in our study were not exposed to high doses but rather to low/moderate doses of Anth-bC. Our results suggest that early during the exposure to these low doses, individuals develop subclinical abnormalities of both left ventricular performance and aortic stiffness.

Three metrics of left ventricular systolic function (LVESV, LVEF, and strain) deteriorated over the course of the study. Changes similar to these (2- to 6-ml increase in LVESV or a 5% drop from a normal resting LVEF) were associated with an adverse CV prognosis in a study of patients with heart failure and a preserved resting LVEF (17). Importantly, within 6 months of the receipt of chemotherapy, 26% of individuals who exhibited an LVEF >50% at baseline experienced a deterioration in LVEF <50%, a threshold that identifies abnormal left ventricular performance which often warrants initiation of medical therapy (18,19). Of note, LVEDV did not decrease during the current study; thus, the changes we observed in LVEF and mid-wall myocardial strain were not due to decreases in left ventricular preload that occasionally occur with decreased oral intake or vomiting during receipt of anthracyclines.

Echocardiographically, changes in mid-wall myocardial strain have been shown to deteriorate before changes in left ventricular fractional shortening or LVEF in individuals receiving moderate to high doses of Anth-bC (20,21). In this study, myocardial strain diminished early, commensurate with a decrement in LVEF. The difference in our results could be explained by the heightened accuracy of CMR in measuring left ventricular volumes and LVEF (22). After multivariable analyses, the subclinical abnormalities we observed in LVESV, LVEF, and mid-wall circumferential strain occurred regardless of gender, race, associated CV comorbidities, or the total amount of Anth-bC received. Of note, our mid-wall, mean circumferential strain short-axis image acquisitions were similar to those performed in MESA (7) and have prognostic value for both CV events and left ventricular remodeling after myocardial infarction (23). Future studies



could consider the addition of longitudinal strain measures acquired from left ventricular apical views that have been found useful clinically during transthoracic echocardiography.

Anth-bC was associated with an early and persistent increase in PWV, a measure of vascular stiffening that is associated with increased left ventricular afterload, left ventricular dysfunction and hypertrophy, and adverse CV events, including mortality (24,25). The average change in PWV of >3 m/s to a mean value of 10.1 ± 1.0 m/s that we observed in the current study has been found clinically relevant in other patient populations. In a study of 483 hypertensive patients with a mean age of 50 ± 13 years, aortic PWV measure of 11.5 ± 3.4 m/s was associated with an odds ratio of 2.14 for cardiac events

($p < 0.0001$) (25). The rapid (1-month) increase in PWV suggests that an acute (endothelial dysfunction, increase in smooth muscle tone) rather than chronic (atherosclerosis, increased collagen synthesis) process influenced aortic stiffening in our participants (10); however at this time, we are uncertain of the mechanism of this stiffening.

Although late gadolinium enhancement imaging exhibits diagnostic and prognostic utility in multiple CV disorders (26), its use in assessment of the effects of Anth-bC is limited to 1 case series of 2 patients with Ewing's sarcoma who developed subendocardial enhancement >10 years after receipt of an anthracycline (27). Our results demonstrated no new late gadolinium enhancement during receipt of low doses of Anth-bC at a time when other subclinical functional CV abnormalities occurred.

Serum TnI levels demonstrated an upward trend 6 months after initiation of Anth-bC, and 26% of the participants met the criteria ($0.06 \leq x < 1.0$ mg/ml) for subclinical CV injury 3 months into treatment with Anth-bC. Previously, investigators demonstrated an association between similar subclinical elevations of serum TnI and future cardiac events in individuals treated with chemotherapy (28). It is also important to note that serum BNP did not increase during the duration of this study, which reflects that participants were not in clinical decompensated heart failure. This finding suggests that BNP does not contribute to the screening of subclinical CV disease in this patient population.

In addition to CV structural and functional changes seen with low- to moderate-dose Anth-bC, there were also negative changes in QOL that involved physical, emotional, social, and mental aspects. These changes were significant early after receipt of chemotherapy and remained significant at 6 months. A recent study has validated the MLHFQ and reported that an increase of 5 total points is clinically significant (29).

Those treated for breast cancer or a hematologic malignancy, or those receiving doxorubicin versus daunorubicin, experienced similar increases in PWV and decreases in left ventricular performance. It is noteworthy that there was no correlation between the decrease in LVEF, or the increase in PWV, and the cumulative dose of doxorubicin-equivalent chemotherapy administered to participants in the study. In addition, our resting measures of LVEF ($57.9 \pm 1.0\%$) and PWV (6.7 ± 0.5 m/s) are similar to measures observed in other populations without

clinical CV disease (25,30,31); thus, we did not appreciate a resting abnormality of CV function that would necessarily contribute to our results.

Study limitations. First, although the high accuracy and reproducibility of CMR allowed us to identify subclinical abnormalities of CV function in patients receiving treatment for cancer with a small sample size, studies with larger numbers of participants could identify whether specific CV risk factors predispose individuals to develop early subclinical CV injury on receipt of Anth-bC. Second, there were no Hispanic or Asian participants in the study. For this reason, we are unable to derive conclusions regarding the relationship between anthracycline administration and subclinical CV disease in Hispanic or Asian subjects. Third, our serum TnI and BNP samples were acquired the morning before anthracycline administration; therefore, the results and conclusions related to chronic TnI elevation observed in this study may differ from those that are recognized within hours after anthracycline administration. Larger elevations in serum TnI have been observed in children immediately after receipt of an anthracycline (32).

CONCLUSIONS

Independent of gender, age, black or white race, and the number of CV risk factors, cardiac systolic performance declined and aortic stiffness increased early after exposure to low to moderate doses of anthracycline-based chemotherapeutic regimens for these study patients with breast cancer or a hematologic malignancy. These data indicate that low-dose Anth-bC is associated with subclinical abnormalities of CV function that in other high-risk populations are associated with CV events. Further investigations are warranted to determine if these markers of subclinical CV disease that develop early after anthracycline administration are associated with future CV events in cancer survivors.

Acknowledgment

The authors appreciate the expert assistance of Amanda Keith in the preparation of the manuscript.

Reprint requests and correspondence: Dr. W. Gregory Hundley, Wake Forest University Health Sciences, Bowman Gray Campus, Medical Center Boulevard, Winston-Salem, North Carolina 27157-1045. *E-mail:* ghundley@wakehealth.edu.

REFERENCES

1. Du XL, Fox EE, Lai D. Competing causes of death for women with breast cancer and change over time from 1975 to 2003. *Am J Clin Oncol* 2008; 31:105-16.
2. Hooning MJ, Botma A, Aleman BM, et al. Long-term risk of cardiovascular disease in 10-year survivors of breast cancer. *J Natl Cancer Inst* 2007;99: 365-75.
3. Swerdlow AJ, Higgins CD, Smith P, et al. Myocardial infarction mortality risk after treatment for Hodgkin's disease: a collaborative British cohort study. *J Natl Cancer Inst* 2007;99:206-14.
4. Singal PK, Iliskovic N. Doxorubicin-induced cardiomyopathy. *N Engl J Med* 1998;339:900-5.
5. Eschenhagen T, Force T, Ewer MS, et al. Cardiovascular side effects of cancer therapies: a position statement from the Heart Failure Association of the European Society of Cardiology. *Eur J Heart Fail* 2011;13:1-10.
6. Rerkpattanapipat P, D'Agostino RB Jr., Link KM, et al. Location of arterial stiffening differs in those with impaired fasting glucose versus diabetes: implications for left ventricular hypertrophy from the Multi-Ethnic Study of Atherosclerosis. *Diabetes* 2009;58: 946-53.
7. Heckbert SR, Post W, Pearson GD, et al. Traditional cardiovascular risk factors in relation to left ventricular mass, volume, and systolic function by cardiac magnetic resonance imaging: the Multiethnic Study of Atherosclerosis. *J Am Coll Cardiol* 2006;48: 2285-92.
8. Shehata ML, Cheng S, Osman NF, Bluemke DA, Lima JA. Myocardial tissue tagging with cardiovascular magnetic resonance. *J Cardiovasc Magn Reson* 2009;11:55.
9. Sampath S, Derbyshire JA, Atalar E, Osman NF, Prince JL. Real-time imaging of two-dimensional cardiac strain using a harmonic phase magnetic resonance imaging (HARP-MRI) pulse sequence. *Magn Reson Med* 2003;50:154-63.
10. Chaosuwanakit N, D'Agostino R Jr., Hamilton CA, et al. Aortic stiffness increases upon receipt of anthracycline chemotherapy. *J Clin Oncol* 2010;28: 166-72.
11. Kim RJ, Wu E, Rafael A, et al. The use of contrast-enhanced magnetic resonance imaging to identify reversible myocardial dysfunction. *N Engl J Med* 2000;343:1445-53.
12. John J, Woodward DB, Wang Y, et al. Troponin-I as a prognosticator of mortality in severe sepsis patients. *J Crit Care* 2010;25:270-5.
13. Daugaard G, Lassen U, Bie P, et al. Natriuretic peptides in the monitoring of anthracycline induced reduction in left ventricular ejection fraction. *Eur J Heart Fail* 2005;7:87-93.
14. Keller T, Zeller T, Peetz D, et al. Sensitive troponin I assay in early diagnosis of acute myocardial infarction. *N Engl J Med* 2009;361:868-77.
15. Rector TS. A conceptual model of the quality of life in relation to heart failure. *J Cardiac Failure* 2005;11:173-6.
16. Keefe DL. Anthracycline-induced cardiomyopathy. *Semin Oncol* 2001; 28:2-7.
17. Yusuf S, Teo KK, Pogue J, et al. Telmisartan, ramipril, or both in patients at high risk of vascular events. *N Engl J Med* 2008;358:1547-59.
18. Jessup M, Abraham WT, Casey DE, et al. 2009 focused update: ACCF/AHA guidelines for the diagnosis and management of heart failure in adults. *Circulation* 2009;119:1977-2016.
19. Bhatia RS, Tu JV, Lee DS, et al. Outcome of heart failure with preserved ejection fraction in a population-based study. *N Engl J Med* 2006;355:260-9.
20. Cheung Y, Hong WJ, Chan GC, Wong SJ, Ha SY. Left ventricular myocardial deformation and mechanical dyssynchrony in children with normal ventricular shortening fraction after anthracycline therapy. *Heart* 2010;96:1137-41.
21. Stanton T, Leano R, Marwick TH. Prediction of all cause mortality from global longitudinal speckle strain: comparison with ejection fraction and wall motion scoring. *Circ Cardiovasc Imaging* 2009;2:356-64.
22. Bellenger NG, Davies LC, Francis JM, Coats AJ, Pennell DJ. Reduction in sample size for studies of remodeling in heart failure by the use of cardiovascular magnetic resonance. *J Cardiovasc Magn Reson* 2000;2: 271-8.
23. Hung CL, Verma A, Uno H, et al. Longitudinal and circumferential strain rate, left ventricular remodeling, and prognosis after myocardial infarction. *J Am Coll Cardiol* 2010;56: 1812-22.
24. Laurent S, Boutouyrie P, Asmar R, et al. Aortic stiffness is an independent predictor of all-cause and cardiovascular mortality in hypertensive patients. *Hypertension* 2001;37:1236-41.
25. Boutouyrie P, Tropeano AI, Asmar R, et al. Aortic stiffness is an independent predictor of primary coronary events in hypertensive patients: a longitudinal study. *Hypertension* 2002;39:10-5.
26. Green JJ, Berger JS, Kramer CM, Salerno M. Prognostic value of late gadolinium enhancement in clinical outcomes for hypertrophic cardiomyopathy. *J Am Coll Cardiol Img* 2012;5:370-7.
27. Perel RD, Slaughter RE, Strugnell WE. Subendocardial late gadolinium enhancement in two patients with anthracycline cardiotoxicity following treatment for Ewing's sarcoma. *J Cardiovasc Magn Reson* 2006; 8:789-91.
28. Cardinale D, Sandri MT, Colombo A, et al. Prognostic value of troponin I in cardiac risk stratification of cancer patients undergoing high-dose chemotherapy. *Circulation* 2004;109:2749-54.
29. Rector TS, Carson PE, Anand IS, et al. Assessment of long-term effects of irbesartan on heart failure with preserved ejection fraction as measured by the Minnesota Living with Heart Failure Questionnaire in the Irbesartan in Heart Failure with Preserved Systolic Function (I-PRESERVE) Trial. *Circ Heart Fail* 2012;5:217-25.
30. Quinones MA, Greenberg BH, Kopelen HA, et al. Echocardiographic predictors of clinical outcome in patients with left ventricular dysfunction enrolled in the SOLVD registry and trials: significance of left ventricular hypertrophy. *Studies of Left Ventricular Dysfunction*. *J Am Coll Cardiol* 2000;35:1237-44.
31. Dahlof B. Cardiovascular disease risk factors: epidemiology and risk assessment. *Am J Cardiol* 2010;Suppl 1: 3A-9A.
32. Germanakis I, Anagnostatou N, Kalmanti M. Troponins and natriuretic peptides in the monitoring of anthracycline cardiotoxicity. *Pediatr Blood Cancer* 2008;51:327-33.

Key Words: cardio-oncology ■ cardiotoxicity ■ chemotherapy.