

# PNEUMOLOGIA

portuguese journal of pulmonology

[www.revportpneumol.org](http://www.revportpneumol.org)



## ORIGINAL ARTICLE

# Is $^{18}\text{F}$ -FDG-PET/CT prognostic factor for survival in patients with small cell lung cancer? Single center experience

A. Inal<sup>a,\*</sup>, M. Kucukoner<sup>a</sup>, M.A. Kaplan<sup>a</sup>, Z. Urakçı<sup>a</sup>, N. Nas<sup>b</sup>,  
M. Guven<sup>b</sup>, Z. Dostbil<sup>c</sup>, S. Altındag<sup>c</sup>, A. Isikdogan<sup>a</sup>

<sup>a</sup> Dicle University, Department of Medical Oncology, Diyarbakir, Turkey

<sup>b</sup> Dicle University, Department of Internal Medicine, Diyarbakir, Turkey

<sup>c</sup> Dicle University, Department of Nuclear Medicine, Diyarbakir, Turkey

Received 27 November 2012; accepted 7 March 2013

Available online 28 August 2013

### KEYWORDS

Small cell lung cancer;  
Prognostic factors;  
 $^{18}\text{F}$ -FDG-PET/CT

### Abstract

**Background:** Although a number of studies in patients with a variety of malignant tumors have shown that metabolic activity on fluorine-18 deoxyglucose positron emission tomography computed tomography ( $^{18}\text{F}$ -FDG-PET/CT) is correlated with survival, there are few studies about the impact of  $^{18}\text{F}$ -FDG-PET/CT for survival in small cell lung cancer (SCLC) patients. There is still some ambiguity as to whether FDG PET in patients with SCLC will ensure prognostic knowledge for survival. We performed a retrospective analysis of prognostic implication of  $^{18}\text{F}$ -FDG-PET/CT in patients with SCLC.

**Methods:** We retrospectively reviewed 54 patients with histologically or cytologically proven SCLC who had undergone pre-treatment  $^{18}\text{F}$ -FDG-PET/CT scanning between September 2007 and November 2011 in the Dicle University, School of Medicine, Department of Medical Oncology. SUVmax and other potential prognostic variables were chosen for analysis in this study. Univariate and multivariate analyses were conducted to identify prognostic factors associated with survival.

**Result:** Among the eleven variables of univariate analysis, three variables were identified as having prognostic significance: Performance status ( $p < 0.001$ ), stage ( $p = 0.02$ ) and diabetes mellitus ( $p = 0.05$ ).

Multivariate analysis showed that performance status and stage were considered independent prognostic factors for survival ( $p < 0.001$  and  $p = 0.002$  respectively).

**Conclusion:** In conclusion, performance status and stage were identified as important prognostic factors, while  $^{18}\text{F}$ -FDG-PET/CT uptake of the primary lesions was not associated with prognostic importance for survival in patients with SCLC.

© 2012 Sociedade Portuguesa de Pneumologia. Published by Elsevier España, S.L. All rights reserved.

\* Corresponding author.

E-mail addresses: [dr.ainal@gmail.com](mailto:dr.ainal@gmail.com), [dr.ali33@mynet.com](mailto:dr.ali33@mynet.com) (A. Inal).

**PALAVRAS-CHAVE**

Cancro pulmonar de pequenas células; Fatores de prognóstico;  $^{18}\text{F}$ -FDG-PET/CT

## É o $^{18}\text{F}$ -FDG-PET/CT um fator de prognóstico para a sobrevivência em pacientes com cancro pulmonar de pequenas células? Experiência num único centro

**Resumo**

**Antecedentes:** Embora uma série de estudos em pacientes com uma diversidade de tumores malignos tenham demonstrado que a atividade metabólica na tomografia computadorizada por emissão de positrões de deoxiglucose marcada com flúor-18 ( $^{18}\text{F}$ -FDG-PET/CT) está correlacionada com a sobrevivência, existem poucos estudos sobre o impacto do  $^{18}\text{F}$ -FDG-PET/CT para a sobrevivência em pacientes com cancro pulmonar de células pequenas (SCLC). Ainda existe alguma ambiguidade de que, em pacientes com SCLC, o FDG PET forneça informações importantes relativamente de prognóstico para a sobrevivência. Realizámos uma análise retrospectiva da implicação no prognóstico de  $^{18}\text{F}$ -FDG-PET/CT em pacientes com SCLC.

**Métodos:** Analisámos retrospectivamente 54 pacientes com SCLC comprovado histologicamente ou citologicamente, que tinham realizado  $^{18}\text{F}$ -FDG-PET/CT entre setembro de 2007 e novembro de 2011, na Universidade de Dicle, Faculdade de Medicina, Departamento de Oncologia Médica. Foram escolhidas a SUVmax e outras potenciais variáveis de prognóstico para a análise neste estudo. Foram realizadas análises univariadas e multivariadas para identificar os fatores de prognóstico associados à sobrevivência.

**Resultado:** Entre as 11 variáveis da análise univariada, 3 variáveis foram identificadas como tendo significância para o prognóstico. Estado Geral ( $p < 0,001$ ), estágio ( $p = 0,02$ ) e diabetes mellitus ( $p = 0,05$ ).

A análise multivariada mostrou que o Estado Geral e o estágio foram considerados fatores de prognóstico independentes para a sobrevivência ( $p < 0,001$ ,  $p = 0,002$  respetivamente).

**Conclusão:** Em conclusão, o Estado Geral e o estágio foram identificados como importantes fatores de prognóstico, enquanto a absorção de  $^{18}\text{F}$ -FDG-PET/CT das lesões primárias não se associou ao prognóstico para a sobrevivência em pacientes com SCLC.

© 2012 Sociedade Portuguesa de Pneumologia. Publicado por Elsevier España, S.L. Todos os direitos reservados.

**Introduction**

Lung cancer is the most common among cancer-related deaths in both men and women in worldwide. Small cell lung cancer (SCLC) represents approximately 15% of all diagnosed lung cancers cases.<sup>1,2</sup> SCLC is associated with a more rapid tumor doubling time, a high growth fraction and early widespread dissemination. As a result of this, overall survival (OS) rates for these patients are disappointingly low.

The Veterans Administration Lung Study Group two-tiered staging system was used to classify SCLC as either limited disease (LD) or extended disease (ED) which was primarily based on compatibility for treatment options.<sup>3</sup> Despite its practical usefulness and prognostic advantage, this staging system is not accurate enough to reflect tumor burden, and it is insufficient to predict survival in some patients.

Very different prognostic factors in several trials have been identified for survival in patients with SCLC<sup>4-7</sup>; however, none of these prognostic factors are sufficiently reliable to base treatment decision on. Even though fluorine-18 deoxyglucose positron emission tomography computed tomography ( $^{18}\text{F}$ -FDG-PET/CT) scan is widely utilized in staging SCLC, it is not standard work-up for SCLC with respect to international guidelines. Owing to the fact that a number of studies in patients with a variety of malignant tumours<sup>8-13</sup> have shown that metabolic activity on  $^{18}\text{F}$ -FDG-PET/CT is correlated with survival, there are few studies about the impact of  $^{18}\text{F}$ -FDG-PET/CT for survival

in SCLC patients.<sup>14-17</sup> There remains an ambiguity as to whether  $^{18}\text{F}$ -FDG-PET/CT in patients receiving first-line etoposide plus cisplatin (EP) chemotherapy will provide reliable prognostic knowledge about survival.

We performed a retrospective analysis of the prognostic implication of  $^{18}\text{F}$ -FDG-PET/CT for patients with SCLC. The aim of this study was to investigate the prognostic significance of the characteristics of patients in SCLC. Specifically, we investigated the prognostic implication of  $^{18}\text{F}$ -FDG-PET/CT for OS in the patients receiving first-line EP chemotherapy.

**Methods****Patient population**

We retrospectively reviewed 54 patients with histologically or cytologically proven SCLC who had undergone pre-treatment  $^{18}\text{F}$ -FDG-PET/CT scanning from September 2007 to November 2011 in the Dicle University, School of Medicine, Department of Medical Oncology. They met the following inclusion criteria; (1) 18 or more years old; (2) a histologic or cytologic diagnosis of SCLC; (3) no previous chemotherapy or radiotherapy; (4) there was sufficient clinical data recorded in medical records; (5) they had to have a measurable disease, as defined by Response Evaluation Criteria in Solid Tumours (RECIST).

Patients were identified as having DM on the basis of elevated fasting glucose level (>126 mg/dL), and a history of DM or medication use, such as insulin or oral hypoglycemic agents.

Patients with LD underwent concurrent chemoradiotherapy, which consisted of chemotherapy and thoracic radiotherapy. Both LD and ED patients were receiving first-line EP chemotherapy. The EP regimen consisted of 100 mg/m<sup>2</sup> etoposide on days 1 and 30 mg/m<sup>2</sup> cisplatin on days 1–3, every 3 weeks.

All had SCLC. Patients who had received prior treatment were excluded.

## FDG-PET imaging

FDG-PET was carried out in all cases within 6 weeks before SRBT. All patients fasted for at least 4 h before the <sup>18</sup>F-FDG-PET/CT examination though oral hydration with glucose-free water was given. When peripheral blood glucose level before administration of <sup>18</sup>F-FDG was <150 mg/dL, patients received an intravenous injection of 3.70–4.44 MBq/kg of FDG. Whole-body FDG-PET was scanned using the same scanner, Biograph 6 PET/CT scanner (CTI/Siemens, Knoxville, TN). The axes of both systems were mechanically aligned so that the patient could be moved from the CT scanner to the PET scanner gantry. The resulting of PET and CT scans co-registered on the same hardware. Then, 1 hour after the injection, CT and PET scans were performed. Images from the level of the middle skull to the proximal thigh were obtained. CT scan was implemented with the following settings: 110 kV; 80 mA; tube rotation time, 0.8 s/rotation per pitch, and section thickness, 3.0 mm (whole body CT had 307 or 356 slices). The PET and CT scans were obtained during normal tidal breathing. The PET scans were done immediately after the CT scans. The PET/CT scans were obtained in 3D mode at 3 min per bed position.

As a semi-quantitative analysis, the maximum standardized uptake value (SUVmax) was achieved by placing region of interest (ROIs) over the lesions that had been determined as suspicious on visual assessment. SUVmax of the pulmonary tumor was calculated in all cases using a 3D acquisition and the following formula:

$$\text{SUV} = \frac{\text{Mean ROI activity (MBq/ml) / Injected dose (MBq)}}{\text{Body weight (g)}} \times \frac{1}{\text{decay factor of F-18}}$$

The maximum standardized uptake value (SUVmax) was represented by the counts per second of the voxel showing the maximum radioactivity in the volume of interest encompassing the tumor divided by the volume of the voxel (mL).

PET data were iteratively reconstructed using an ordered subset expectation maximization algorithm and segmented attenuation correction (2 iterations, 8 subsets) and the CT data. Co-registered scans were displayed using dedicated software (e-soft-PET; Siemens Medical Solutions).

Two experienced nuclear medicine physicians, who were unaware of the clinical results, viewed and quantitatively analyzed the PET images.

## Factors analyzed

Eleven potential prognostic variables were chosen on the basis of previously published clinical trials. The variables were divided into categories: age (<65 or ≥65), gender (male or female), performance status (PS) (0–1, 2–3), stage (LD or ED), weight loss ≥5% with previous 3 months (present or absent), diabetes mellitus (present or absent), smoking history (present or absent), SUVmax values (<13.0 or ≥13.0), laboratory parameters [(albumin, LDH, blood sugar) (<median or ≥median)] at the time of first-line chemotherapy administration.

The values of SUVmax were detected between 5 and 20 in prior studies with *log-rank probability values to determine a prognostic cutoff point for SUVmax*. Because no statistically significant value was found, SUVmax was dichotomized at its median of 12.9 in present study.

## Statistical analysis

All of the analyses were performed using the SPSS statistical software program package (SPSS version 11.5 for windows). The differences in the clinical characteristics between the two groups were analyzed by chi-square test and student t test. Overall survival (OS) was calculated from the start of the first cycle of chemotherapy to the date of death from any cause or the date of the last follow-up. Overall survival was estimated using the Kaplan–Meier method. The Cox proportional hazards regression model was used to determine statistical significant variables related to survival. Differences were assumed to be significant when *p* value was less than 0.05.

## Results

### Patient characteristics

Between September 2007 and November 2011, 54 patients with SCLC were enrolled in this study. The median age of patients was 57 years (range 28–80) with 50 (92.6%) males and 4 (7.4%) females. The number of patients with a PS score 0–1 was 34 (63.0%). Thirty patients (55.6%) were diagnosed as having extended disease and 24 patients (44.4%) had limited disease. The estimated median OS with LD was 17.3 months (95% CI, 8.9–25.7 months). Median OS of the treated ED patients was 8.4 months (95% CI, 7.1–9.8 months). The patients' baseline characteristics are listed in [Table 1](#).

### Prognostic factor analysis

The results of univariate analysis are summarized in [Table 2](#). Among the eleven variables of univariate analysis, three variables were identified as having prognostic significance: Performance status (*p*<0.001), stage (*p*=0.02) and diabetes mellitus (*p*=0.05). Multivariate

**Table 1** The general characteristics of the patients.

Characteristic	No. of patients (%)
<b>Sex</b>	
Male	50 (92.6)
Female	4 (7.4)
Age, median (range)	57 (28–80)
<b>Age</b>	
<65	47 (87.0)
≥65	7 (13.0)
<b>Performance status</b>	
0–1	34 (63.0)
2–3	18 (33.3)
Unknown	2 (3.7)
<b>Smoking history</b>	
Current or former	46 (85.2)
Never	4 (7.4)
Unknown	4 (7.4)
<b>Weight loss</b>	
Yes	34 (63.0)
No	11 (20.4)
Unknown	9 (16.6)
<b>Diabetes mellitus</b>	
Yes	40 (74.1)
No	4 (7.4)
Unknown	10 (18.5)
<b>Stage</b>	
LD	24 (44.4)
ED	30 (55.6)
SUVmax, median	13 (4.2–29.0)
<b>Laboratory parameters, median</b>	
Albumin, g/dl	3.4
LDH, U/l	248
Blood sugar, mg/dl	103

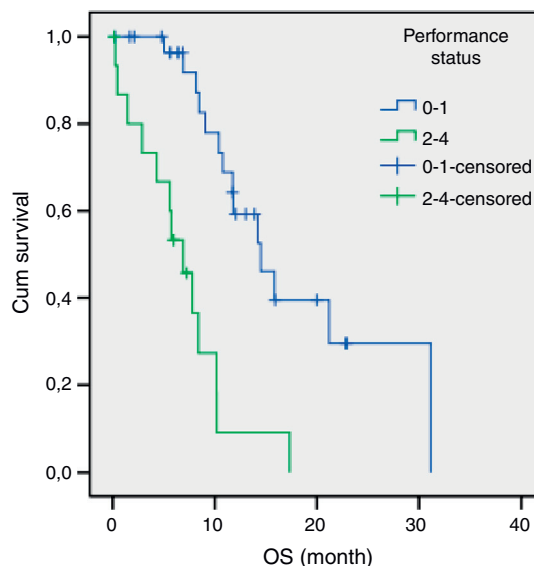
analysis included the three prognostic significance factors in univariate analysis. The results of multivariate analysis are shown in Table 3. Multivariate analysis by Cox proportional hazard model showed that performance status and stage were considered independent

**Table 2** Univariate analysis of survival time by categorical variable.

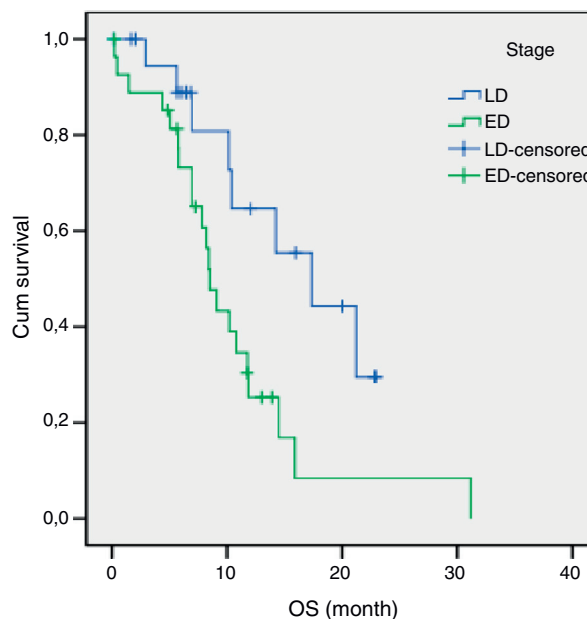
Variable	Log-rank test value	Degrees of freedom	p
Sex	1.16	1	0.28
Age	0.29	1	0.86
Stage	5.39	1	0.02
Smoking history	0.79	1	0.37
Performance status	19.2	1	<0.001
Weight loss	0.1	1	0.90
Diabetes mellitus	3.72	1	0.05
SUVmax, median	0.18	1	0.66
Laboratory parameters, median		1	
Albumin	2.45	1	0.11
LDH	1.05	1	0.30
Blood sugar	1.73	1	0.18

**Table 3** Multivariate analysis of prognostic factors.

Parameter	OR	%95 CI	p-Value
Performance status	6.19	2.42–15.8	<0.001
Stage	6.46	1.93–21.5	0.002



**Figure 1** Survival of patients according to performance status.



**Figure 2** Survival of patients according to stage.

prognostic factors for survival ( $p < 0.001$  and  $p = 0.002$  respectively) (Figs. 1 and 2).

**Discussion**

SCLC is very sensitive to radiotherapy and chemotherapy while it is associated with a faster tumor doubling time, a high growth fraction and early widespread dissemination.

As a result of this, overall survival rates for these patients are disappointingly low. Patients eligible for chemotherapy should be selected very carefully.

There are a number of studies about this activity as shown on FDG PET in relation to survival in SCLC<sup>14–17</sup>; the importance of <sup>18</sup>F-FDG-PET/CT for survival in patients receiving first-line EP chemotherapy is still subject to controversy. Although Lee et al.<sup>15</sup> showed that the degree of SUVmax was strongly associated with an increase in overall survival, Zhu et al.<sup>14</sup> and Van der Leest et al.<sup>17</sup> on the contrary found no observable prognostic value of SUVmax. In our multivariate analysis, we found that SUVmax value was not a factor associated with survival. The inconsistency of results may be partly explained by blood glucose level of the patient, time to imaging, the biological characteristics of tumor cells and treatment modality.

A poor PS is usually accepted as a negative prognostic factor for all cancer patients.<sup>18–20</sup> The importance of PS was also confirmed in advanced SCLC patients.<sup>15</sup> Our study showed that poor PS is an associated independent risk factor for survival.

The median survival for limited disease is 14–16 months and only 8–11 months for extensive disease with effective treatment. The overall 5-year survival rate is under 10%.<sup>1,21</sup> In previous studies, many authors<sup>14,15,17</sup> have shown that the tumor stage at initial presentation was the most important prognostic factor for survival in patients with SCLC. Similarly, stage was found to be an independent prognostic factor of survival in the present study. In our study, the estimated median OS for LD was 17.3 months (95% CI, 8.9–25.7 months) and only 8.4 months (95% CI, 7.1–9.8 months) for ED.

The present study has got some limitations. Firstly, it is based on retrospective studies. Secondly, the number of patients was small. Thirdly, we did not evaluate the type of DM, duration of diabetes and the types of diabetic therapy used. Fourthly, the limit described of 150 mg/dl of patient blood glucose level may lower the sensitivity of <sup>18</sup>F-FDG-PET/CT. A number of the studies have shown that plasma glucose competes with <sup>18</sup>F-FDG uptake of malignant lesions; for this reason it is claimed that hyperglycemia may reduce and impair <sup>18</sup>F-FDG uptake of tumors.<sup>22–25</sup> However, Mirpour et al.<sup>26</sup> and Roy et al.<sup>27</sup> showed that the quality of PET/CT images is sufficient to provide a trustworthy clinical opinion, even in those patients with serum glucose level above 180 mg/dL. Accordingly, the Society of Nuclear Medicine guidelines for PET/CT advocates that <sup>18</sup>F-FDG should not be administered when plasma glucose level is over 150–200 mg/dL (8.3–11.1 mmol/L).<sup>28</sup> The European Association of Nuclear Medicine also recommends that glycemia should ideally not exceed 130 mg/dL, and the test should be rescheduled if the serum glucose level is higher than 200 mg/dL (7.2 mmol/L).<sup>29</sup> In fact, there are several points of controversy outstanding. The <sup>18</sup>F-FDG tumoural uptake process in hyperglycemia is not yet fully understood.

In conclusion, performance status and stage were identified as important prognostic factors, while FDG uptake of the primary lesions was not associated with the prognostic importance for survival in patients with SCLC. These findings may also facilitate pretreatment prediction of survival and can be used for selecting patients for the correct choice of

treatment. Therefore, prospective and larger clinical trials are needed.

## Ethical disclosures

**Protection of human and animal subjects.** The authors declare that no experiments were performed on humans or animals for this study.

**Confidentiality of data.** The authors declare that they have followed the protocols of their work center on the publication of patient data and that all the patients included in the study received sufficient information and gave their written informed consent to participate in the study.

**Right to privacy and informed consent.** The authors have obtained the written informed consent of the patients or subjects mentioned in the article. The corresponding author is in possession of this document.

## Conflicts of interest

The authors have no conflicts of interest to declare.

## References

- Boyle P, Ferlay J. Cancer incidence and mortality in Europe, 2004. *Ann Oncol.* 2005;16:481–8.
- Serke M, Schonfeld N. Diagnosis and staging of lung cancer. *Dtsch Med Wochenschr.* 2007;132:1165–9.
- Zelen M. Keynote address on biostatistics and data retrieval. *Cancer Chemother Rep.* 1973;3:31–42.
- Yip D, Harper PG. Predictive and prognostic factors in small cell lung cancer: current status. *Lung Cancer.* 2000;28:173–85.
- Cerny T, Blair V, Anderson H, Bramwell V, Thatcher N. Pretreatment prognostic factors and scoring system in 407 small-cell lung cancer patients. *Int J Cancer.* 1987;39:146–9.
- Albain KS, Crowley JJ, LeBlanc M, Livingston RB. Determinants of improved outcome in small-cell lung cancer: an analysis of the 2,580-patient Southwest Oncology Group data base. *J Clin Oncol.* 1990;8:1563–74.
- Tas F, Aydinler A, Demir C, Topuz E. Serum lactate dehydrogenase levels at presentation predict outcome of patients with limited-stage small-cell lung cancer. *Am J Clin Oncol.* 2001;24:376–8.
- Hellwig D, Gröschel A, Graeter TP, Hellwig AP, Nestle U, Schäfers HJ, et al. Diagnostic performance and prognostic impact of FDG-PET in suspected recurrence of surgically treated non-small cell lung cancer. *Eur J Nucl Med Mol Imaging.* 2006;33:13–21.
- Giovacchini G, Picchio M, Schipani S, Landoni C, Gianolli L, Bettinardi V, et al. Changes in glucose metabolism during and after radiotherapy in non-small cell lung cancer. *Tumori.* 2009;95:177–84.
- Berghmans T, Dusart M, Paesmans M, et al. European Lung Cancer Working Party for the IASLC Lung Cancer Staging Project. Primary tumor standardized uptake value (SUVmax) measured on fluorodeoxyglucose positron emission tomography (FDG-PET) is of prognostic value for survival in non-small cell lung cancer (NSCLC): a systematic review and meta-analysis (MA) by the European Lung Cancer Working Party for the IASLC Lung Cancer Staging Project. *J Thorac Oncol.* 2008;3:6–12.
- Allal AS, Slosman DO, Kebdani T, Allaoua M, Lehmann W, Dulguerov P. Prediction of outcome in head-and-neck



- cancer patients using the standardized uptake value of 2-[<sup>18</sup>F]fluoro-2-deoxy-D-glucose. *Int J Radiat Oncol Biol Phys.* 2004;59:1295–300.
12. Ikenaga N, Otomo N, Toyofuku A, Ueda Y, Toyoda K, Hayashi T, et al. Standardized uptake values for breast carcinomas assessed by fluorodeoxyglucose—positron emission tomography correlate with prognostic factors. *Am Surg.* 2007;73:1151–7.
  13. Xie P, Yue JB, Fu Z, Feng R, Yu JM. Prognostic value of <sup>18</sup>F-FDG PET/CT before and after radiotherapy for locally advanced nasopharyngeal carcinoma. *Ann Oncol.* 2009;21:1078–82.
  14. Zhu D, Ma T, Niu Z, Zheng J, Han A, Zhao S, et al. Prognostic significance of metabolic parameters measured by (18)F-fluorodeoxyglucose positron emission tomography/computed tomography in patients with small cell lung cancer. *Lung Cancer.* 2011;73:332–7.
  15. Lee YJ, Cho A, Cho BC, Yun M, Kim SK, Chang J, et al. High tumor metabolic activity as measured by fluorodeoxyglucose positron emission tomography is associated with poor prognosis in limited and extensive stage small-cell lung cancer. *Clin Cancer Res.* 2009;15:2426–32.
  16. Van Loon J, Offermann C, Ollers M, van Elmpt W, Vegt E, Rahmy A, et al. Early CT and FDG-metabolic tumor volume changes show a significant correlation with survival in stage I-III small cell lung cancer: a hypothesis generating study. *Radiother Oncol.* 2011;99:172–5.
  17. Van der Leest C, Smit EF, Baas J, Versteijlen RJ, van Walree N, Hoogsteden HC, et al. SUV(max) during 18FDG-PET scanning in small cell lung cancer: Similar information as in non-small cell lung cancer? *Lung Cancer.* 2012;76:67–71.
  18. Kim JG, Ryoo BY, Park YH, Kim BS, Kim TY, Im YH, et al. Prognostic factors for survival of patients with advanced gastric cancer treated with cisplatin-based chemotherapy. *Cancer Chemother Pharmacol.* 2008;61:301–7.
  19. Mitry E, Douillard JY, Van Cutsem E, Cunningham D, Magherini E, Mery-Mignard D, et al. Predictive factors of survival in patients with advanced colorectal cancer: an individual data analysis of 602 patients included in irinotecan phase III trial. *Ann Oncol.* 2004;15:1013–7.
  20. Krishnan S, Rana V, Janjan NA, Abbruzzese JL, Gould MS, Das P, et al. Prognostic factors in patients with unresectable locally advanced pancreatic adenocarcinoma treated with chemoradiation. *Cancer.* 2006;107:2589–96.
  21. Pelayo Alvarez M, Gallego Rubio O, Bonfill Cosp X, Agra Varela Y. Chemotherapy versus best supportive care for extensive small cell lung cancer. *Cochrane Database Syst Rev.* 2009. CD001990.
  22. Diederichs CG, Staib L, Glatting G, Beger HG, Reske SN. FDG PET: elevated plasma glucose reduces both uptake and detection rate of pancreatic malignancies. *J Nucl Med.* 1998;39:1030–3.
  23. Wahl RL, Henry CA, Ethier SP. Serum glucose: effects on tumor and normal tissue accumulation of 2-[F-18]-fluoro-2-deoxy-D-glucose in rodents with mammary carcinoma. *Radiology.* 1992;183:643–7.
  24. Langen KJ, Braun U, Rota Kops E, Herzog H, Kuwert T, Nebeling B, et al. The influence of plasma glucose levels on fluorine-18-fluorodeoxyglucose uptake in bronchial carcinomas. *J Nucl Med.* 1993;34:355–9.
  25. Crippa F, Gavazzi C, Bozzetti F, Chiesa C, Pascali C, Bogni A, et al. The influence of blood glucose levels on [<sup>18</sup>F]fluorodeoxyglucose (FDG) uptake in cancer: a PET study in liver metastases from colorectal carcinomas. *Tumori.* 1997;83:748–52.
  26. Mirpour S, Meteesatien P, Khandani AH. Does hyperglycemia affect the diagnostic value of <sup>18</sup>F-FDG PET/CT? *Rev Esp Med Nucl Imagen Mol.* 2012;31:71–7.
  27. Roy FN, Beaulieu S, Boucher L, Bourdeau I, Cohade C. Impact of intravenous insulin on <sup>18</sup>F-FDG PET in diabetic cancer patients. *J Nucl Med.* 2009;50:178–83.
  28. Delbeke D, Coleman RE, Guiberteau MJ, Brown ML, Royal HD, Siegel BA, et al. Procedure guideline for tumor imaging with 18F-FDG PET/CT 1.0. *J Nucl Med.* 2006;47:885–95.
  29. Bombardieri E, Aktolun C, Baum RP, Bishof-Delaloye A, Buscombe J, Chatal JF, et al. FDG-PET: procedure guidelines for tumor imaging. *Eur J Nucl Med Mol Imaging.* 2003;30:BP115–24.