

Fate Mapping Reveals Origins and Dynamics of Monocytes and Tissue Macrophages under Homeostasis

Simon Yona, Ki-Wook Kim, Yochai Wolf, Alexander Mildner, Diana Varol, Michal Breker, Dalit Strauss-Ayali, Sergey Viukov, Martin Williams, Alexander Misharin, David A. Hume, Harris Perlman, Bernard Malissen, Elazar Zelzer, and Steffen Jung*

*Correspondence: s.jung@weizmann.ac.il

<http://dx.doi.org/10.1016/j.immuni.2013.05.008>

(Immunity 38, 79–91; January 24, 2013)

In this paper, the flow-cytometry plots were initially missing tick marks indicating the data scaling. Revised Figures 1–6 appear here. The legends are not repeated.

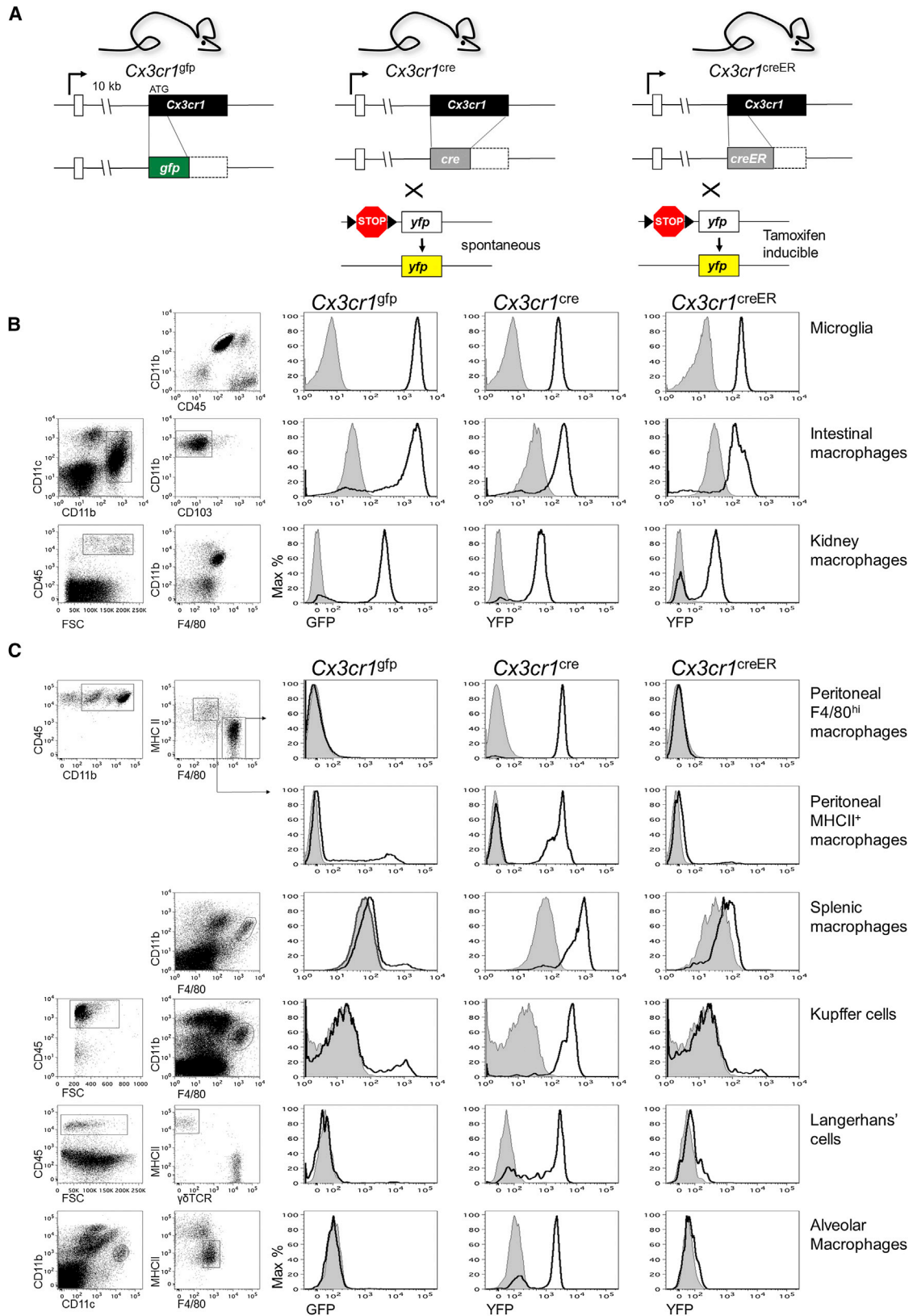


Figure 1. Reporter Gene Expression Profile of Macrophage Populations in *Cx3cr1*^{gfp/+}, *Cx3cr1*^{cre/+}:R26-yfp, and Tamoxifen-Treated *Cx3cr1*^{creER/+}:R26-yfp Mice

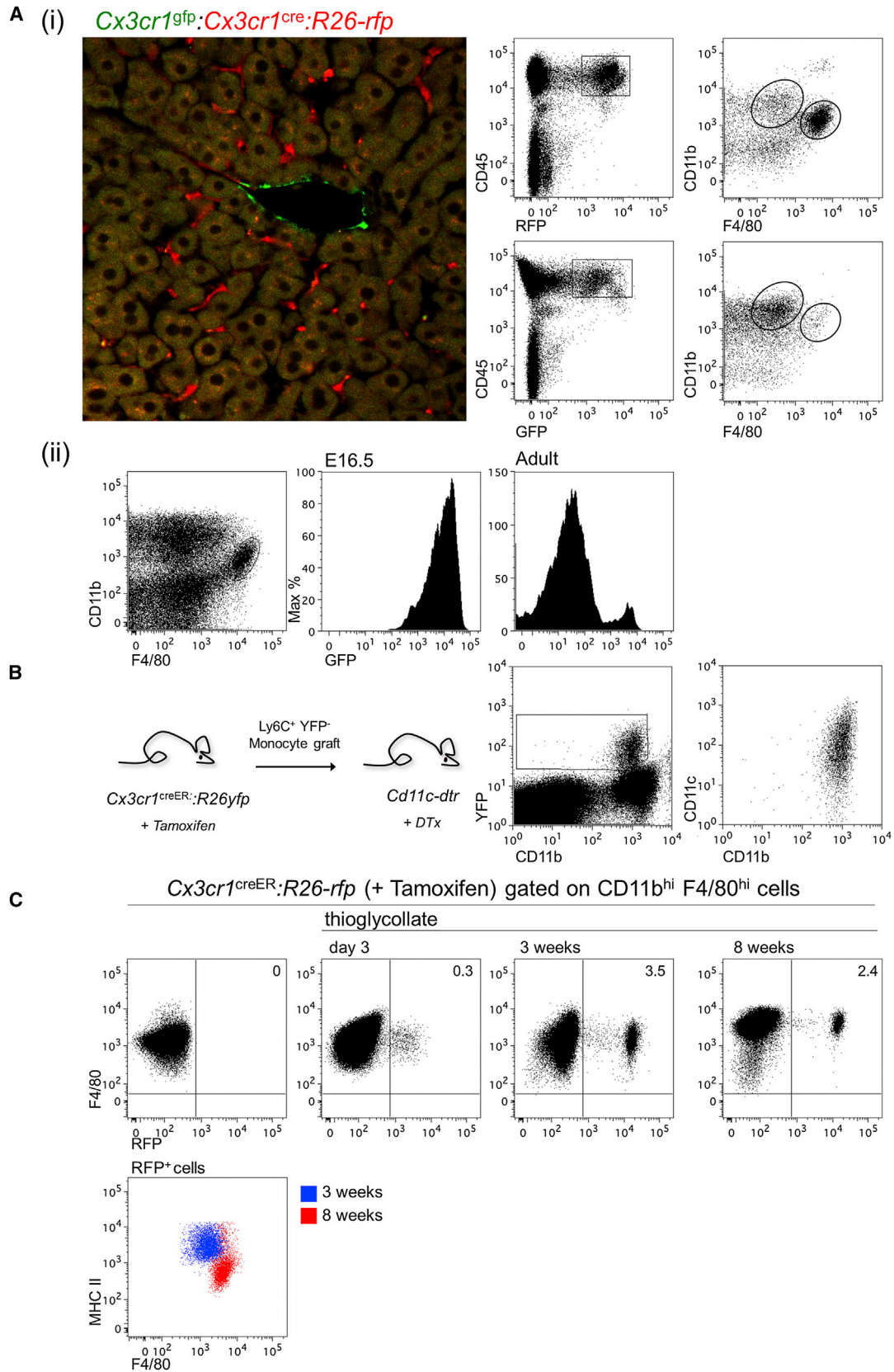


Figure 2. Dual Origins of Macrophages

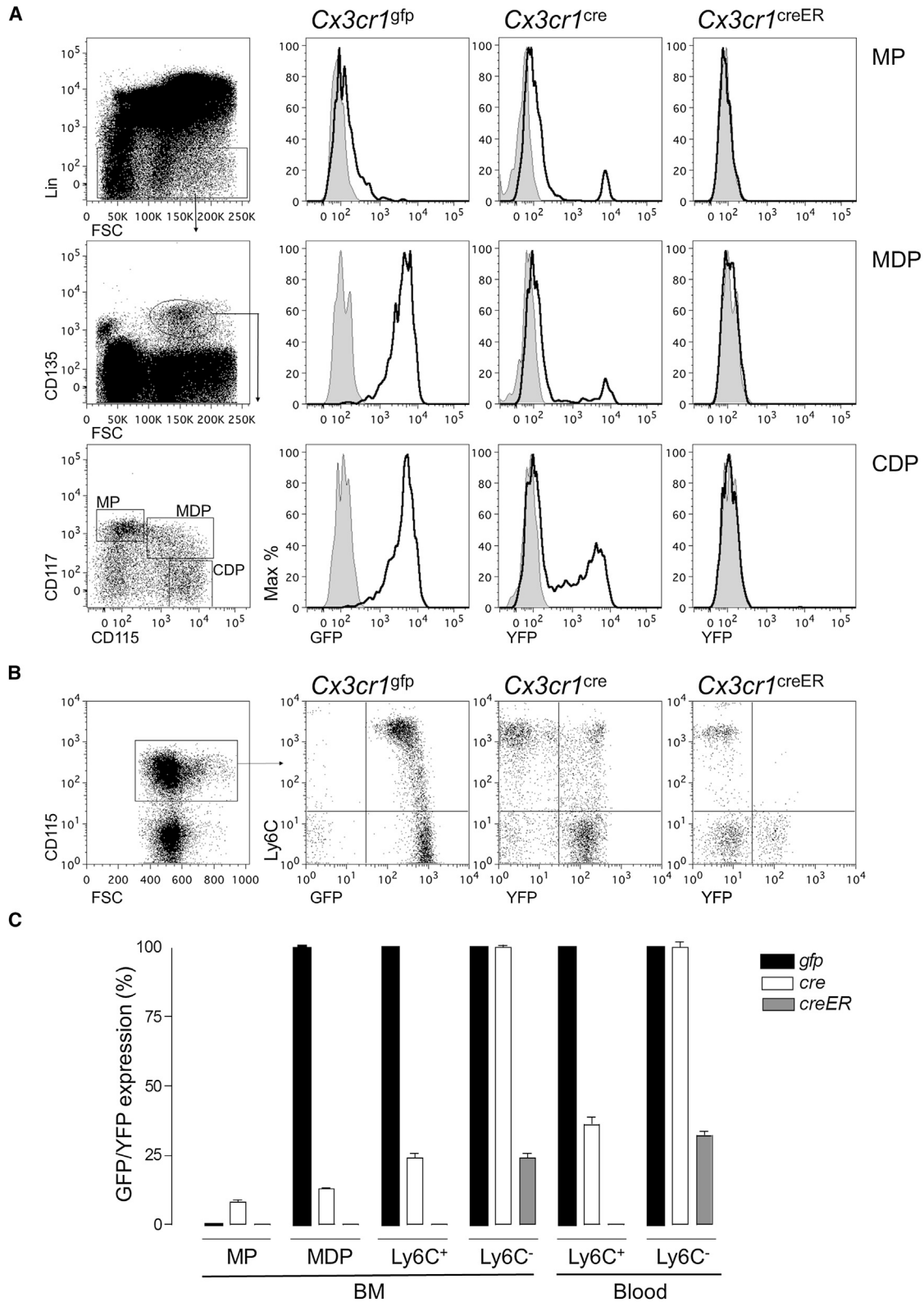


Figure 3. Reporter Gene Expression Profile of Mononuclear Phagocyte Precursors and Circulating Monocytes

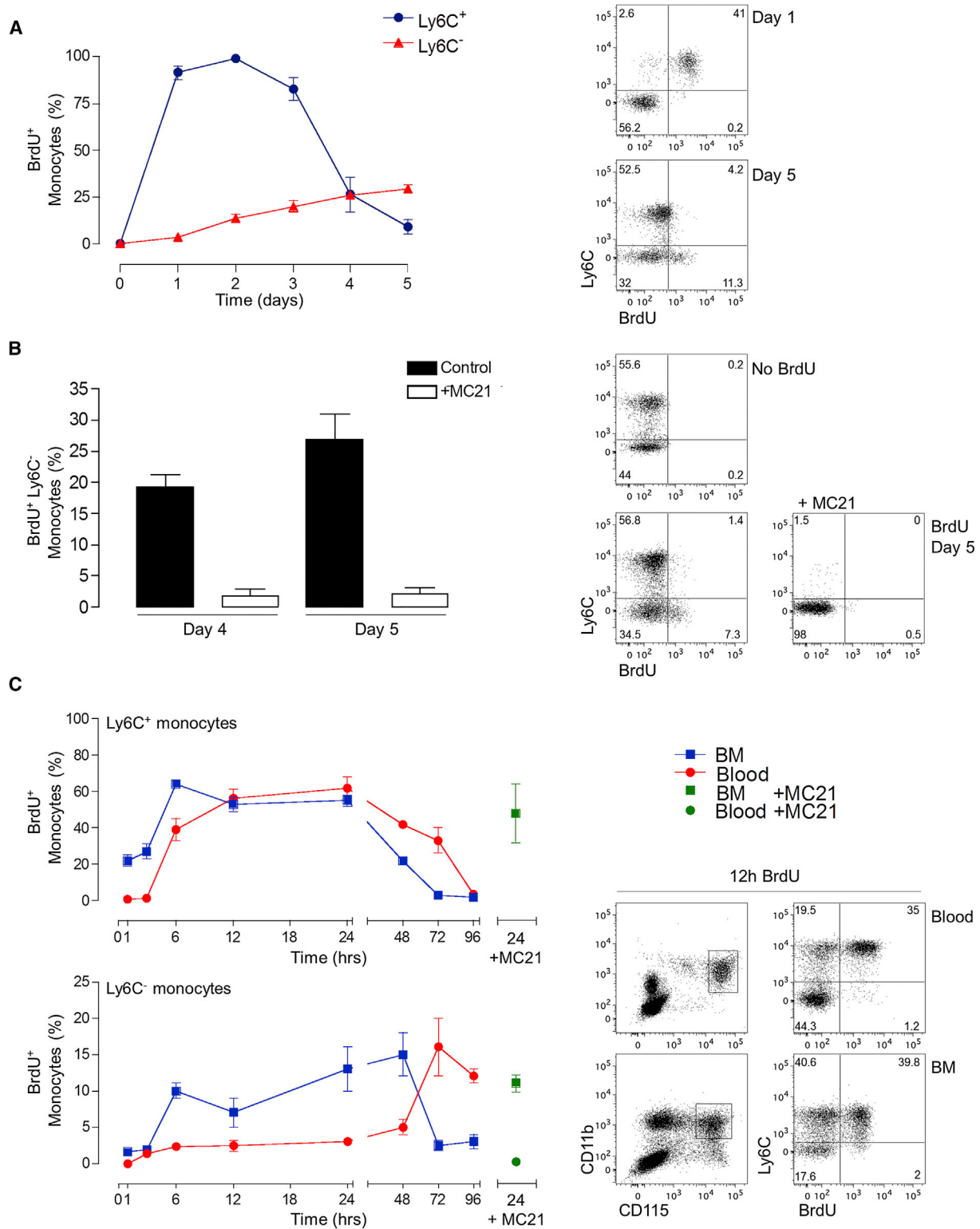


Figure 4. Monocyte Subset Dynamics

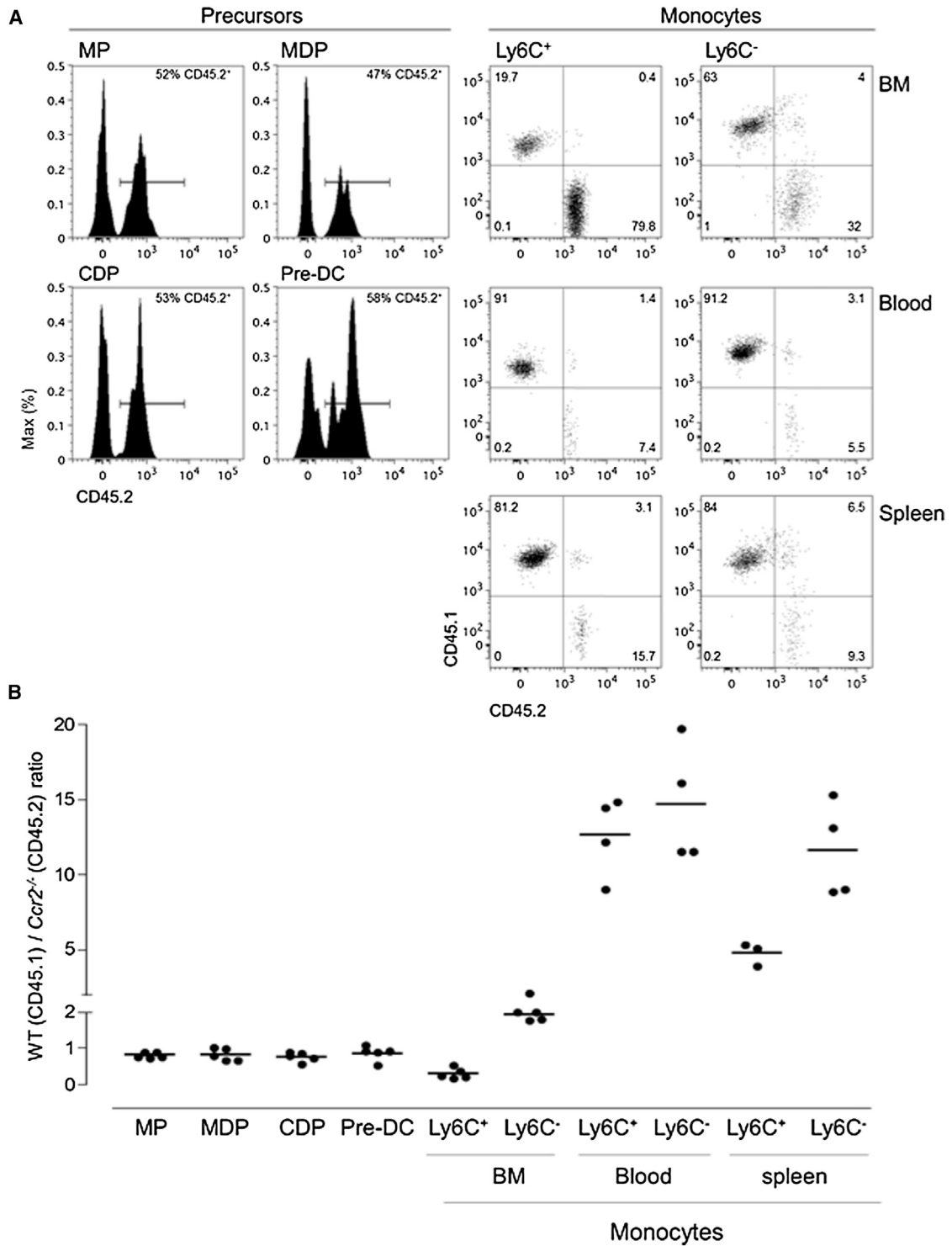


Figure 5. Impaired BM Exit of Ly6C⁺ Blood Monocyte Affects the Ly6C⁻ Cell Compartment

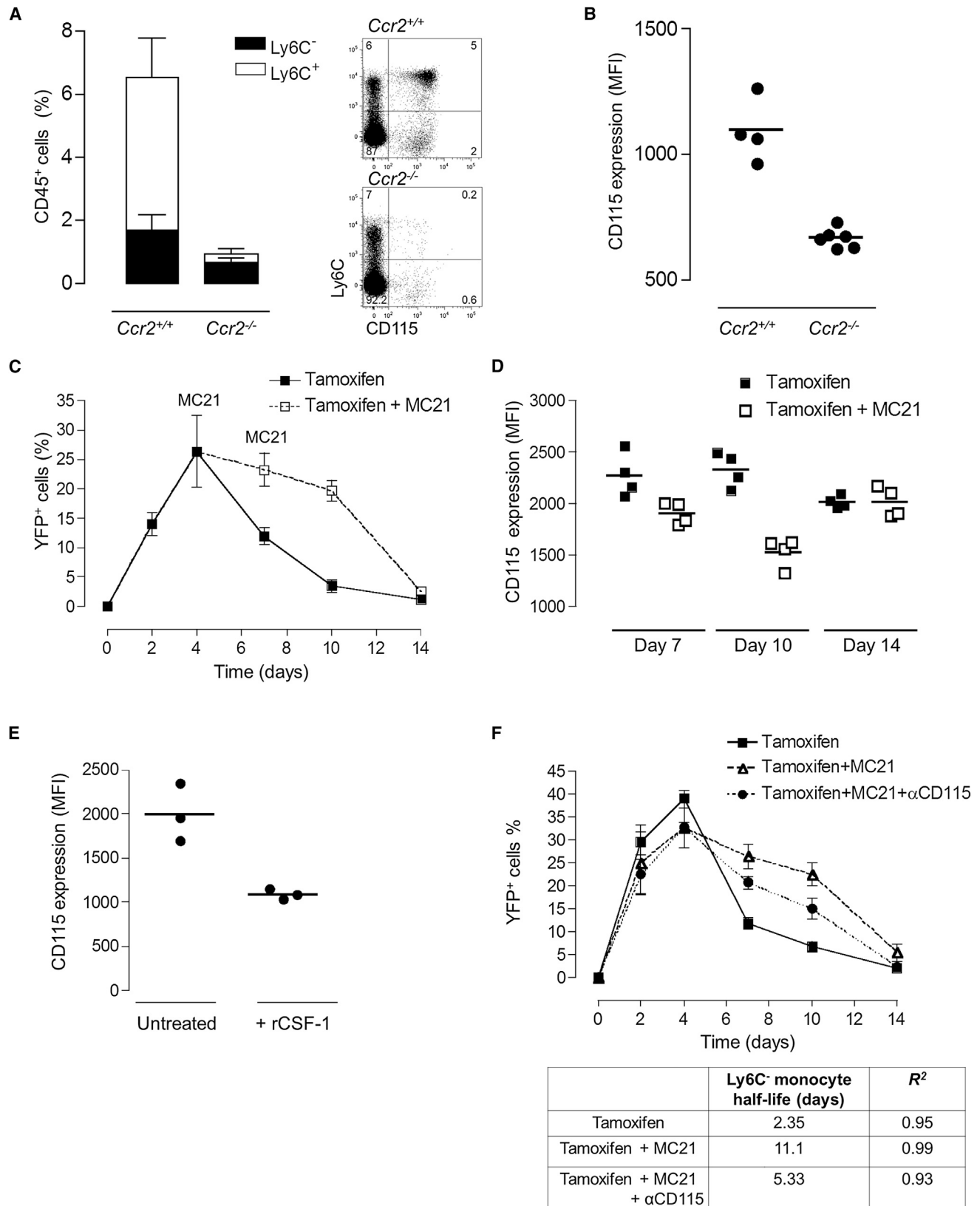


Figure 6. Prevalence of Ly6C⁺ Blood Monocytes Determines the Circulation Half-Life of Ly6C⁻ Blood Cells