

reduced by 1.1% in PHEP, and total MU for PHEP was 1.8% lower than that for LEP. In the P-NTV, the D_{mean} , V_{20Gy} and V_{25Gy} of the PHEP were 1.6%, 1.8% and 2.9% lower than those of LEP.

Conclusions: Dose to some OARs and a normal tissue, total monitor unit were reduced in IMRT plan with partially used high energy photon. Although these reduction are unclear how have a clinical benefit to patient, application of the partially used high energy photon could improve the overall plan quality of IMRT for head and neck cancer.

PO-0935

IMRT treatment for palliative irradiation of spinal bone metastasis

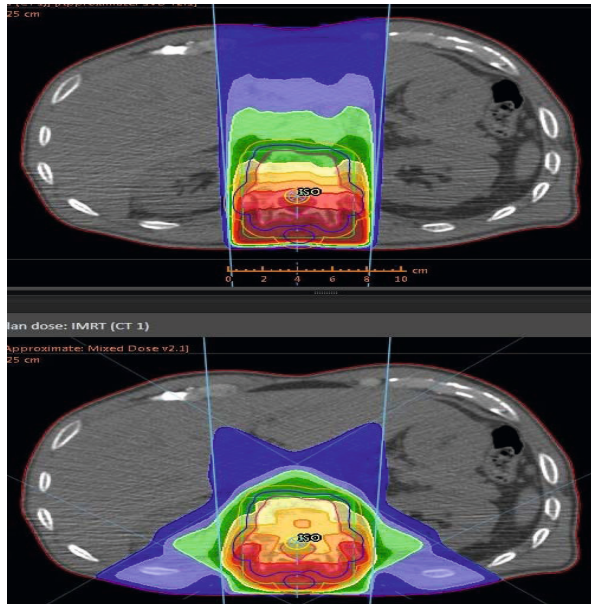
J. Kant¹, M. Spoolder¹, E. Loeters¹, A. Minken¹, C. Niël¹
¹RISO, Radiotherapy, Deventer, The Netherlands

Purpose/Objective: To assess the practical feasibility of IMRT treatment planning and delivery for single dose palliative radiotherapy in spinal bone metastases limiting adverse effects as vomiting, nausea and diarrhea.

Materials and Methods: Target volumes and critical structures were delineated. IMRT plans were created using RayStation (RaySearch, Stockholm) for 36 patients previously treated with one posterior field. The plans consisted of three beams with in total 9 segments at fixed gantry angles of 130, 180 and 230 degrees using 6 MV photons. IMRT plans were compared to the conventional plans with respect to planning time and treatment time. Normal tissue sparing as well as target coverage and dose homogeneity were evaluated by dose volume histograms.

Results: IMRT plans resulted in normal tissue sparing resulted from IMRT due to a more localized dose delivery. Dose to the kidneys was higher in IMRT patients, but to a level well below the QUANTEC-tolerance limits. IMRT treatment planning results in improved target homogeneity.

In the higher region of the spine (Th4-Th9) the esophagus still receives a high amount of dose.



Th10-L2	1 Gy	2 Gy	4 Gy	6 Gy	8 Gy	Dmax (cGy)
Bowel conventional	10.28 ± 6.98	9.08 ± 6.24	2.40 ± 2.85	0.05 ± 0.16	0	558.33 ± 139.55
Bowel IMRT	21.48 ± 12.09	2.37 ± 2.51	0.05 ± 0.13	0	0	416.67 ± 164.39
Kidney conventional	10.89 ± 6.72	8.45 ± 5.67	5.85 ± 4.57	3.25 ± 3.39	0.19 ± 0.57	740.31 ± 57.11
Kidney IMRT	74.80 ± 21.75	45.50 ± 15.21	23.74 ± 10.53	7.33 ± 4.65	0.35 ± 1.29	786.25 ± 48.97

Table 1: Critical structures in Th10-L2

Conclusions: Implementation of IMRT in palliative treatment of spinal metastases using 1x8Gy is feasible without a significant increase of labor or treatment time. It decreases the amount of dose in normal tissue that might result in acute adverse effects. The findings in this study should be tested to show the clinical value of lowering the dose in normal tissue. Other bundle designs might be investigated to lower the esophageal dose. Implementation of IMRT treatment planning and delivery thereby seems feasible in clinical practice.

PO-0936

Comparative study between 3D-CRT and IMRT in definitive treatment of cervical cancer

R. Salama¹
¹Kasr El-Aini Center of Oncology and Nuclear Medicine, Cairo, Egypt

Purpose/Objective: the primary aim to conduct a dosimetric study between WP-3D-CRT and WP-IMRT as regard to coverage to target volumes and doses to risk structures for definitive treatment of cervical cancer stage IB-IVA.

Materials and Methods: 15 patients with cervical cancer stage IB-IVA were treated with WP-3D CRT (45Gy/25 fr/5weeks) with concomitant weekly cisplatin 40mg/m² followed by one application of LDR brachytherapy 30 Gy to point A then parametrial boost 10-15Gy/5Fr/1week. The patients were replanned with WP-IMRT. The margin was compatible with literatures and organ motion. DVHs were compared for the target volumes and OAS using paired t-test.

Results: the mean target volume coverage by 95% (V42.7) was 95.78% for WP-3D-CRT and 93.22% for WP-IMRT (p value <0.001). IMRT was associated with significant dose reduction to OAS at V40 and V45 levels. There was >20% reduction at V40 level for most of patients: 63.52% (bladder), 16.67% (small bowel) and 37.12% (rectum).

Conclusions: An initial IMRT plan with appropriate margin encompassing the target volumes and potential microscopic pelvic spread leads to reduction in the doses to OAS without compromising the target volume. while in locally advanced cases stage IIIB-IVA, there was a little benefit especially when large part of rectum or bladder were included in the target volumes.

POSTER: RTT TRACK: VOLUME DEFINITION, TREATMENT MARGINS, GEOMETRIC UNCERTAINTIES AND TREATMENT ACCURACY

PO-0937

Impact of quality assurance on contour conformity within two UK head & neck radiotherapy trials

J. Conibear¹, E. Spezi², D. Gujral¹, A. Miah¹, D. Bernstein³, E. Wells³, C. Nutting¹

¹The Royal Marsden Hospital, Head and Neck Unit, London, United Kingdom

²Velindre Cancer Centre, Medical Physics Department, Cardiff, United Kingdom

³The Royal Marsden Hospital, Medical Physics Department, London, United Kingdom

Purpose/Objective: Radiotherapy quality assurance (RTQA) is now a requirement of radiotherapy trials since poor protocol compliance has been shown to impact on outcomes. We aim to determine the degree of variation in head and neck target contouring and the impact of RTQA feedback on clinician conformity using pre-accrual benchmark cases.

Materials and Methods: Two trials, the first a randomised study of dose escalated intensity modulated radiotherapy (IMRT) versus standard dose IMRT in patients receiving treatment for locally advanced laryngeal / hypopharyngeal cancers (ART-DECO) and the second a study of cochlear-sparing IMRT versus conventional radiotherapy in patients with parotid tumours (COSTAR), require all prospective investigators to submit pre-accrual contouring benchmark cases. Cases are assessed for protocol compliance and resubmissions requested until trial compliant. All benchmark cases for ART-DECO and COSTAR until June 2012 are collected in DICOM format. Cases were analysed using a tumour management group (TMG) consensus contour. Dice coefficient (DC), Jaccard index (JI) and geographical miss index (GMI) were calculated for each individual structure. The data was pre-processed to ensure uniform structure nomenclature and then analysed using automated trial analysis tools built using MATLAB R2011a and CERR v.4.0.

Results: By June 2012, 14 clinicians had submitted a total of 77 exercises for the ART-DECO trial; 38 for case 1 and 39 for case 2. The maximum number of re-submissions was 4. For the COSTAR trial, 27 clinicians had submitted a total of 53 benchmark cases. The maximum number of re-submissions was 3. A total of 700 target volume contours were analysed; 385 for ART-DECO (CTV1, spinal cord (SC), brainstem (BS), ipsilateral parotid (IP) and contralateral parotid (CP)) and 330 for COSTAR (CTV1, SC, BS, CP, left cochlea and right cochlea). All conformity indices showed varying levels of conformity in clinician contouring. For ART-DECO exercise 1, BS had a median JI of 0.55 (Interquartile Range (IQR) 0.11) and CTV1 had a median JI of 0.63 (IQR 0.11). Improvements in JI were seen after each successive submission from individual clinicians. After submission 4 for ART-DECO exercise 1

the median JI for BS had increased to 0.67 (range 0.65 -0.70) and the median JI for CTV1 had increased to 0.70 (range 0.66 - 0.75).

Conclusions: Target volume delineation varies significantly in head and neck radiotherapy trials. However, it appears that detailed RTQA feedback does improve clinician conformity within the pre-accural period.

PO-0938

Use of deformation metric for head and neck atlas selection

G. Stevenson¹, F. Kaster¹, M.J. Gooding¹

¹Mirada Medical Ltd, Science and Medical Technology, Oxford, United Kingdom

Purpose/Objective: Metrics relating to the deformation field between the patient and an atlas have been frequently used in the literature as a method of atlas selection. Two popular metrics in neurology have been the mean and maximum of the deformation after rigid alignment, used as a method to assess similarity between patient and atlas. The aim of this study was to investigate whether this approach is suitable for head and neck atlas selection.

Materials and Methods: 33 structures were contoured to atlas standard according to RTOG guidelines for 10 Head and Neck subjects. A leave-one-out approach was used to auto-contour each case using an atlas-based contouring system (RTx, Mirada Medical, Oxford, UK). Thus, 90 cases with manual ground truth results were available for assessment. The Dice similarity between the patient and selected atlas was calculated on the case as a whole. The mean and maximum absolute deformation distance after rigid registration were measured. The correlation between the deformation metrics and the Dice similarity were calculated using Spearman rank correlation coefficient.

Results: The average Dice similarity for the case as a whole was 0.79. The average and maximum absolute deformations were 16.90mm and 59.31mm respectively. The Spearman rank correlation coefficient was -0.11 for Dice versus mean and 0.02 for Dice versus max.

Conclusions: Poor correlation was found between the deformation metrics and the Dice similarity, suggesting that these metrics are not suitable for atlas selection on a whole case basis for head and neck cancer. These deformation metrics may reflect change in patient position, and it may be more appropriate to measure deformation for individual structures as a method of assessing similarity.

PO-0939

Factors of importance for the need for adaptive re-planning in head and neck IMRT

A. Schouboe¹, U.V. Elstrøm¹, M. Ellegaard¹, C. Grau¹

¹Aarhus University Hospital, Department of Oncology, Aarhus C, Denmark

Purpose/Objective: Adaptive re-planning is of interest in head and neck IMRT due to anatomical changes with potential dosimetric consequences. It is not clear how and when such re-planning should be performed. Weight loss and tumor shrinkage occur in some but not all patients. The daily volumetric kV-Cone Beam CT (CBCT) taken for positioning may be used to select patients for re-planning. The purpose of this study was to identify factors of importance for the need for adaptive re-planning during the treatment course.

Materials and Methods: Since 2009, we have used daily CBCT for all head and neck cancer IMRT. The daily CBCT acquired at the treatment couch is compared by the Radiation Therapists (RTT) with the planning CT by the using automatic rigid 3D match on the bony anatomy followed by couch shift and treatment delivery. If consecutive daily match results show deviations in the patient anatomy of more than 5mm, re-planning is considered to maintain sufficient target coverage and sparing of organs at risk (OAR). Re-planning is performed on either pre-scheduled mid-course CT or extra CT acquired at the time of observed deviations. A systematic review through the patient records of 378 head and neck cancer patients treated in 2010 and 2011 (30-34 fractions) identified 36 patients (10%) with at least one re-plan during the treatment course. Tumor site, TNM stage, age, body weight twice weekly, HPV status and medication during treatment were collected from patient records and CBCT scans were reviewed off-line. From the daily CBCTs in the online matched position changes in the body outline from planning at the level of cervical vertebra C2 were measured to assess shrinkage of soft tissue near the parotid glands.

Results: A total 36 (10%) of curative head and neck patients were re-planned over a 2 year period. Average time for re-plan was after 14 fractions. Eight patients needed more than one re-plan. Cause of re-planning was improper immobilization in 23 patients, of whom 14 needed a new mask. Six patients had significant weight loss, 4 from tumor shrinkage, 3 from tumor growth and 3 from swelling. Despite interventions with dietary supplements a significant weight loss (3.5%

mean) was observed, most pronounced in the group of patients treated with chemoradiotherapy, who lost 13% weight. Data from more than 1000 CBCT have been collected and investigations of the association between patient weight curve and change in body-outline are ongoing.

Conclusions: The data suggest that adaptive replanning during head and neck cancer IMRT is necessary in about 10% of cases, most commonly due to weight loss and tumor shrinkage, leading to unstable immobilization. The potential role of using anatomical information from the daily CBCT in a prognostic model for the need for replanning is currently being investigated.

PO-0940

The influence of bladder and rectum movement on geographic miss during post-prostatectomy IMRT

L. Bell¹, J. Cox¹, T. Eade¹, M. Rinks¹, A. Kneebone¹

¹Royal North Shore Hospital, Radiation Oncology, St Leonards, Australia

Purpose/Objective: There is little guidance for Radiation Oncologists on appropriate margin for post-prostatectomy IMRT (PP-IMRT) and what importance to place on reproducible bladder and rectal filling. The aims of this study were to quantify prostate bed movement and to determine what amount of bladder or rectum size variation creates the potential for geographic miss.

Materials and Methods: Cone Beam CT images (n=377) of forty patients who received PP-IMRT, were reviewed. Prostate bed motion was measured in the upper and lower segments using the position of surgical clips relative to bony anatomy. The movement was then related to variation of bladder and rectal filling. The frequency of potential geographic misses was calculated assuming a 1cm CTV to PTV margin except 0.5cm posteriorly.

Results: The mean movement of the prostate bed in the anterior/posterior (A/P), superior/inferior (S/I) and left/right (L/R) directions was: upper portion: 0.50cm, 0.28cm, and 0.10cm respectively, and lower portion: 0.18cm, 0.18cm, and 0.08cm. Most geographic misses occurred in the upper prostate bed in the A/P direction. Geographic miss occurred in the A/P, S/I, L/R directions in the upper prostate bed in 18.0%, 1.1%, and 0% of images respectively, and in the lower prostate bed in 1.9%, 0%, and 0% of images respectively. In the upper prostate bed, variations in bladder filling of >2cm larger, ±1cm, or >2cm smaller occurred in 3.5%, 55.7%, and 15.4% of images respectively. These variations in bladder filling resulted in potential geographic misses in 61.5%, 9.5% and 27.6% of these images respectively. In the upper prostate bed, variations in rectal filling of >1.5cm larger, 1.1cm larger to 1cm smaller, and >1cm smaller occurred in 17.8%, 75.1%, and 7.1% of images respectively. These variations in rectal filling resulted in geographic misses in 28.4%, 12.4%, and 63.0% of these images respectively. Bladder and rectum size variation had minimal impact in the lower prostate bed, with less than 2% of all images demonstrating a potential geographic miss

Conclusions: Greatest movement occurred in the upper prostate bed especially in the A/P direction. Potential geographic miss occurred in 20.2% of all images with a 0.5cm posterior margin. Bladder and rectum size changes had greatest potential for geographic miss seen when the bladder increases or the rectum decreases. Therefore ensuring a full bladder and empty rectum at simulation could significantly decrease the frequency of potential geographic miss.

PO-0941

A prospective analysis of inter and intrafractional errors to calculate CTV to PTV margin in HN cancer patients

J.F. Perez¹, J. Cacicado², R. Ortiz de Zarate¹, O. del Hoyo², A. Lasso²,

A. Gomez de Iturriaga², E. Boveda², I. Trueba³, F. Caquero², P. Bilbao²

¹Hospital de Cruces, Medical Physics, Barakaldo, Spain

²Hospital de Cruces, Radiotherapy, Barakaldo, Spain

³Hospital de Txagorritxu, Radiotherapy, Vitoria, Spain

Purpose/Objective: To analyse the appropriate CTV-PTV margin in head and neck (HN) carcinomas for our institution.

Materials and Methods: Twenty-three consecutive patients with HN tumors were analysed. Patients were immobilized with a thermoplastic mask fixed to an indexed carbon fiberbase plate fixed to the table coach of the linac. Two orthogonal (anterior-posterior, and lateral) set-up fields were used for the isocenter's verification. Digitally reconstructed radiographs of those fields were imported into the electronic portal imaging device software for verification purposes. Manually bony anatomy template matching was undertaken in an off-line environment to compare reference images to those acquired daily during treatment in order to extract the displacement errors. Displacements in antero-posterior and in craneocaudal were measured on the lateral portal image. Displacements in craniocaudal