

iREVIEWS

STATE-OF-THE-ART PAPER

Arterial Disease in Patients With Human Immunodeficiency Virus Infection

What Has Imaging Taught Us?

James H. Stein, MD,* Judith S. Currier, MD, MSc,† Priscilla Y. Hsue, MD‡

Madison, Wisconsin; and Los Angeles and San Francisco, California

With advances in antiretroviral therapy (ART), individuals with human immunodeficiency virus (HIV) infection are living longer and increasingly die of non-HIV-related diseases, such as cardiovascular disease (CVD). Several observational studies suggest that HIV-infected patients on ART are at increased risk of CVD; however, the precise mechanisms underlying the association between HIV infection and CVD risk are uncertain. Atherosclerosis and arterial disease in HIV-infected individuals is a multifactorial process with several potential targets for research and therapeutic intervention. This paper critically reviews the contributions of imaging to our understanding of arterial disease, atherosclerosis, and CVD risk in HIV-infected individuals. In general, the findings of studies using carotid ultrasound, coronary computed tomographic angiography, and aortic positron emission tomography agree with those from observational studies of CVD events and suggest that HIV infection is associated with an increased risk of CVD. Observational studies of CVD outcomes and studies using carotid intima-media thickness suggest that there is a moderate increase in CVD risk related to HIV serostatus. Less can be said about the role of ART and specific ART therapies in CVD risk, mainly because imaging studies have had serious methodological limitations that diminish their generalizability. Brachial artery reactivity testing has been especially useful for elucidating the arterial pathophysiology of HIV infection and its treatments, as well as the arterial effects of interventions for treating HIV and dyslipidemia. Aortic positron emission tomography has been especially useful for evaluating arterial inflammation. Coronary artery calcium has not proven to be a useful marker of subclinical atherosclerosis in HIV-infected individuals. Imaging studies support the intriguing hypothesis that persistent inflammation and immune dysregulation contribute to increased CVD risk among treated and suppressed patients with HIV infection. (J Am Coll Cardiol Img 2014;7:515–25) © 2014 by the American College of Cardiology Foundation

From the *University of Wisconsin School of Medicine and Public Health, University of Wisconsin–Madison, Madison, Wisconsin; †David Geffen School of Medicine, University of California–Los Angeles, Los Angeles, California; and the ‡Division of Cardiology, University of California–San Francisco, San Francisco, California. This study was supported, in part, by grants HL095132, HL1177131, and HL095130. Dr. Stein receives royalties from a patent licensed to the Wisconsin Alumni Research Foundation regarding carotid ultrasound and cardiovascular disease risk; and has served on the Data and Safety Monitoring Boards of Abbott, Lilly, and Merck & Co., Inc. Dr. Currier has received research grant support to the University of California–Los Angeles from Merck & Co., Inc.; and has served as a consultant to Gilead Sciences. Dr. Hsue has received honoraria from Gilead Sciences and Pfizer Inc.

Manuscript received February 19, 2013; revised manuscript received May 3, 2013, accepted August 2, 2013.

With the advent of potent combination antiretroviral therapy (ART), patients with human immunodeficiency virus (HIV) infection are living longer and increasingly are afflicted with chronic diseases that are common among individuals without HIV infection, such as cardiovascular disease (CVD), cancer, liver disease, and lung disease (1,2). Among HIV-infected individuals in the United States, CVD is the leading non-HIV-related cause of death, although in Europe, CVD death follows cancer and liver disease among the leading causes of mortality in this patient population (1,2). Several observational studies suggest that HIV-infected patients on ART are at increased CVD risk (3–8); however, the precise mechanisms underlying the association between HIV infection and CVD risk are uncertain (8,9). This paper critically reviews the

contributions of imaging to our current understanding of arterial disease, atherosclerosis, and CVD risk in HIV-infected individuals.

HIV and CVD Risk

Some of the increased CVD risk associated with HIV infection is due to an increased burden of traditional risk factors such as cigarette smoking, which is 2 to 3 times more prevalent in individuals with HIV infection (10,11), and risk factors related to use of protease inhibitors, such as dyslipidemia and insulin resistance (11). In the Data Collection on Adverse Events of Anti-HIV Drugs study, exposure to protease inhibitors was an independent predictor of myocardial infarction (MI); however, the major predictors were es-

established CVD, current or former smoking, and male sex, as well as increasing age and a family history of heart disease (12). In fully-adjusted models, diabetes mellitus, higher total cholesterol, and lower high-density lipoprotein cholesterol levels also were independent predictors of MI (12). In a recent observational study from the Veterans Aging Study Virtual Cohort, HIV-infected veterans (mostly men) had nearly a 50% increased relative risk of acute MI compared with those without HIV, after adjustment for traditional risk factors. In addition to HIV serostatus, other independent risk factors for incident MI were increasing age, hypertension, increasing low-density lipoprotein cholesterol, cigarette smoking, and renal disease (8). Thus, as in HIV-uninfected individuals, traditional risk factors powerfully predict CVD in those with HIV infection.

However, hepatitis C coinfection, anemia, low CD4+ T-cell counts, and high HIV-1 ribonucleic acid (RNA) levels also predicted MI risk, suggesting that certain characteristics of individuals with HIV infection, in addition to traditional risk factors, may contribute to increased CVD risk (8). Certain protease inhibitors, such as lopinavir/ritonavir, indinavir, and amprenavir/fosamprenavir, have been associated with increased MI risk and certain nucleoside reverse transcriptase inhibitors, most notably abacavir and possibly didanosine, also may increase MI risk, although data are conflicting (13–15). The impacts of newer classes of antiretroviral agents such as CCR5 inhibitors and integrase inhibitors, which appear to have fewer lipid effects on CVD risk, are largely unknown at this time.

Although the use of ART has been associated with increased CVD risk, 1 large observational study demonstrated that HIV treatment did not increase short-term CVD risk (16). A growing body of evidence suggests that persistent inflammation and disordered immune regulation—which are present even among effectively-treated HIV-infected individuals—may increase CVD risk (17). In an observational study, the odds ratio for acute MI was >4-fold higher among patients with HIV and elevated C-reactive protein compared with those without HIV and with normal C-reactive protein (18). In the SMART (Strategies for Management of Anti-Retroviral Therapy) study, interruption of ART in individuals with chronic HIV infection was associated with high levels of interleukin-6 and D-dimers, biomarkers that were associated independently with all-cause mortality and CVD events; furthermore, ART initiation at higher CD4+ T-cell counts reduced serious non-acquired immunodeficiency syndrome (AIDS) events, which were mostly due to CVD, in a subset of participants who were ART-naïve or had not been receiving ART for at least 6 months before participation (19,20). Indeed, although inflammation and immune dysregulation play key roles in accelerating atherosclerosis in individuals without HIV (21,22), the causes of ongoing inflammation and immune dysregulation in individuals with treated HIV infection appear to be more complicated than in individuals without HIV, whose inflammation is driven, in large part, by visceral adiposity and the metabolic syndrome (17). Atherosclerosis and arterial disease in HIV-infected individuals clearly is a multifactorial process (Fig. 1) with several potential targets for research and therapeutic intervention.

The extent by which HIV infection increases CVD risk beyond traditional risk factors and the

ABBREVIATIONS AND ACRONYMS

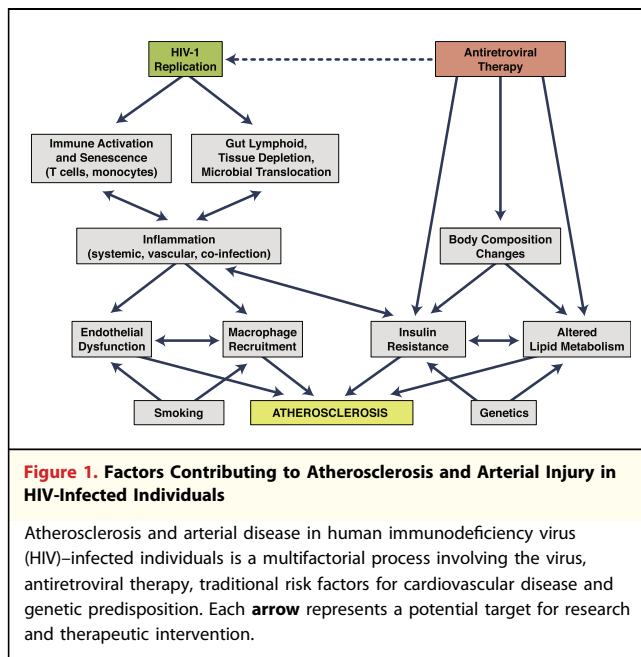
AIDS	= acquired immunodeficiency syndrome
ART	= antiretroviral therapy
BART	= brachial artery reactivity testing
CAC	= coronary artery calcium
CTA	= computed tomography angiography
CVD	= cardiovascular disease
FMD	= flow-mediated vasodilation
HIV	= human immunodeficiency virus
IMT	= intima-media thickness
MI	= myocardial infarction
PET	= positron emission tomography

specific contributions of ART has been difficult to determine. Most of the current data suggesting increased CVD risk among HIV-infected patients comes from observational studies that were not designed to evaluate CV endpoints and thus have important methodological limitations, including short duration of follow-up, low overall event rates, incomplete ascertainment of CVD risk factors and events, and lack of proper HIV-negative control groups. Furthermore, most HIV-infected patients are relatively young and are at low short-term CVD risk, which limits the power of observational studies to more accurately quantify CVD risk, especially in the setting of traditional risk factors that may have been present longer than HIV infection itself. However, the weight of the evidence suggests that there is a moderate degree of excess CVD risk due to HIV infection, especially in individuals over 45 to 50 years of age (7,8).

To overcome some of these limitations, many investigators have used arterial imaging to better understand the magnitude and contributors to the increased CVD risk associated with HIV infection and its mechanisms. The dominant imaging technologies have been carotid ultrasound (to measure intima-media thickness [IMT] and to assess for plaque presence), cardiac computed tomography (to measure coronary artery calcium [CAC] or for computed tomography angiography [CTA] to assess coronary plaque burden and composition), brachial artery ultrasound (for brachial arterial reactivity testing [BART], a measure of endothelial function), and more recently, positron image tomography (PET) (to assess arterial inflammation). Collectively, studies using these imaging technologies support the observational evidence that HIV infection is associated with increased CVD risk. These imaging modalities have elucidated new pathways for investigating the pathophysiology of arterial disease, atherosclerosis, and increased CVD risk in patients with HIV infection.

Carotid Ultrasound

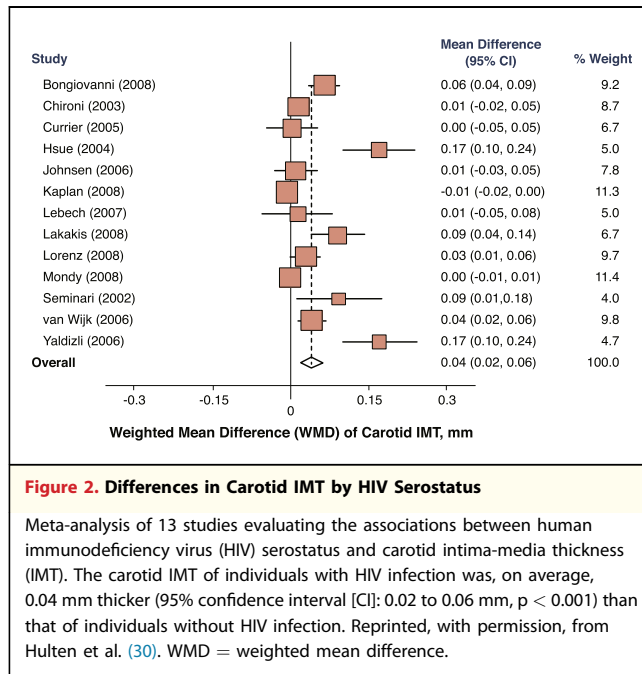
Increased carotid IMT is associated with prevalent CVD and risk factors as well as increased risk of future MI and stroke (23-25). Carotid plaque presence also is associated with an increased risk of future CVD events, independent of traditional risk factors (23,26). Longitudinal carotid IMT progression also has been used as a surrogate marker of change in CVD risk associated with lipid-lowering and antihypertensive medications; however, its



association with changes in CVD risk in the general population is less clear (27-29).

Over 20 observational studies have measured carotid IMT in individuals with HIV (30). Several also assessed for the presence of carotid plaques. In a meta-analysis that included most of these studies, the carotid IMT of individuals with HIV infection was, on average, 0.04 mm thicker (95% confidence interval: 0.02 to 0.06 mm, $p < 0.001$) than that of individuals without HIV infection (Fig. 2) (30).

This difference in carotid IMT is of a magnitude that is consistent with the observational studies showing increased CVD risk in individuals with HIV infection. However, the studies included in the meta-analysis had widely varying population characteristics, study designs, sample sizes, and length of follow-up, and different ultrasound techniques. Most of these studies measured common carotid artery IMT, although some measured IMT in the bifurcation and/or internal carotid artery segments. The finding of higher carotid IMT among those with HIV had significant heterogeneity between studies ($I^2 = 86.5\%$), evidence for publication bias ($p = 0.001$), confounding by male sex, and residual confounding, because a larger effect size was observed among studies with the greatest between-group demographic differences (30). Smaller studies were more likely to conclude that HIV-infected patients had thicker carotid IMT; the point estimates from larger studies were clustered around no effect. Nevertheless, a subsequent report from the cohort with the second largest number of



HIV-infected patients confirmed the results of the meta-analysis (31). In the FRAM (Study of Fat Redistribution and Metabolic Change), the mean difference in common carotid artery IMT between HIV-infected and uninfected control patients was 0.033 mm ($p = 0.005$) after adjustment for demographic and traditional CVD risk factors (31). In addition to HIV infection, these investigators also demonstrated independent effects of traditional CVD risk factors such as age, male sex, current and past smoking, diabetes mellitus, blood pressure, and total and high-density lipoprotein cholesterol on carotid IMT (31). Of note, directionally similar but larger effects were observed in the internal carotid artery than in the common carotid artery (31). The meta-analysis did not find higher carotid IMT for HIV-infected patients exposed to protease inhibitors, with a high degree of study heterogeneity but no evidence of publication bias (30).

Among 6 studies, the odds ratio for carotid plaque presence in HIV-infected individuals compared with uninfected control patients was 1.50 ($p = 0.084$, $I^2 = 67\%$), with significant heterogeneity ($I^2 = 67\%$, $p = 0.009$). Carotid plaque tended to be more prevalent in patients on protease inhibitors, but the p value did not reach statistical significance (odds ratio [OR]: 1.71, $p = 0.103$), possibly due to heterogeneity ($I^2 = 52\%$, $p = 0.059$). Thus, cross-sectional observational studies using carotid ultrasound support the observational studies that evaluated CVD events in demonstrating that: 1)

traditional CVD risk factors are the primary associates of arterial injury among patients with HIV; and 2) a moderate independent association between HIV serostatus and both increased carotid IMT and plaque presence. However, it is not clear if there is an association with use of protease inhibitors.

An even smaller number of studies have looked at the effects of HIV on the longitudinal progression of carotid IMT. The meta-analysis only reviewed 3 small to moderate-sized studies that evaluated change in carotid IMT over time (30). These studies had differing conclusions: 1 described a positive association between HIV serostatus and carotid IMT progression (32), but 1 did not (33). One study found that use of protease inhibitors was associated with more rapid carotid IMT progression (32), but 2 did not (33,34). Each of these studies had a markedly different study design and participant characteristics. Although they broadly agreed that traditional CVD risk factors predicted progression of carotid IMT, they had differing conclusions in regard to the directionality and magnitude of certain risk factors, including CD4 cell count (30). Two subsequent, moderate-sized studies of carotid IMT progression also had inconsistent conclusions (35,36). In 1 study, slower carotid IMT progression was observed among individuals with a persistently-suppressed HIV RNA viral load, but with faster progression among those taking protease inhibitors compared with those taking non-nucleoside reverse transcriptase inhibitor-based regimens (35). Increased body mass index was the only traditional CVD risk factor that independently predicted carotid IMT progression (35). In a second study, traditional CVD risk factors, but no HIV-related measures, were associated with carotid IMT progression; however, the specific risk factors and the magnitude of their associations were inconsistent between carotid artery segments (36). In that study, waist circumference and markers of insulin-glucose metabolism appeared to be the most consistent predictors of carotid IMT progression, but these findings have not been consistently demonstrated (36). For example, another study showed that the IMT progression occurs preferentially at the carotid bifurcation region in HIV-infected individuals and is associated with levels of high-sensitivity C-reactive protein (37). Increased carotid IMT progression also has been observed after initiation of ART (38) and with tenofovir-based therapy (39,40). These studies, however, were quite small.

In regard to inflammation and markers of immune activation, the Women's Interagency Health

Study demonstrated that markers of T-cell activation and senescence were associated with increased carotid plaque prevalence (41). In some studies of suppressed HIV-infected patients, chronic inflammation has been associated with increased carotid IMT (42,43), but not in others (33,35), perhaps due to differing subject populations and imaging approaches. Recently, elevated sCD14 levels have been associated with increased carotid IMT progression in individuals with HIV (44).

In summary, traditional CVD risk factors consistently are associated with carotid IMT in HIV-infected individuals. In agreement with observational studies describing CVD events, HIV infection appears to be associated with higher carotid IMT of a magnitude that is broadly consistent with the observational studies that show an increased risk of CVD events in individuals with HIV infection. However, the effects of HIV infection, its treatments, and its associated immunological abnormalities on carotid IMT progression and plaques are unclear.

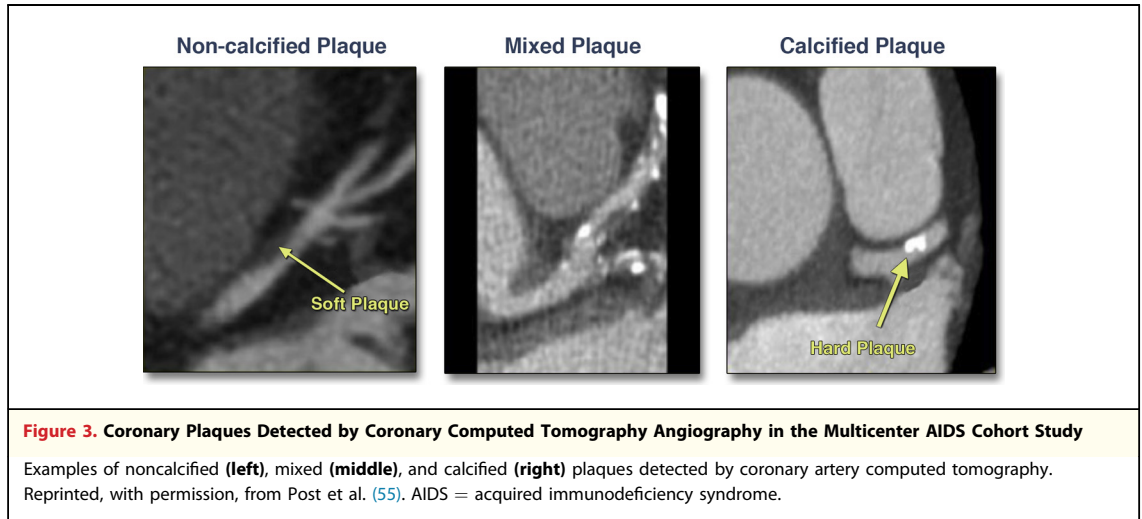
Cardiac Computed Tomography: CAC and CTA

The presence and quantity of CAC are powerful, independent predictors of CVD risk in the general population (45-47). In 1 large epidemiological study, the predictive value of CAC for incident coronary heart disease and cerebrovascular disease exceeded that for carotid IMT and brachial artery flow-mediated dilation (FMD) (48). The effects of HIV serostatus on CAC were addressed in the same paper that described a meta-analysis of carotid IMT and HIV serostatus (30). Seven studies were included in the CAC meta-analysis, including the largest HIV experience, from the Multicenter AIDS Cohort Study (30,49). In the 5 studies that compared CAC among HIV-positive versus -negative patients, the odds ratio for CAC was not significantly higher among HIV-infected patients (OR: 0.95, $p = 0.851$); however, significant heterogeneity was noted ($I^2 = 65\%$, $p = 0.024$). Similarly, the OR for CAC among the 3 studies comparing HIV-infected patients with and without protease inhibitor exposure also was not significant ($p = 0.506$). In the Multicenter AIDS Cohort Study cohort of 332 HIV-negative and 615 HIV-positive men, the adjusted OR for CAC prevalence was 1.35; however, the 95% confidence interval was wide (0.7 to 2.61) and was similar in regard to long-term use of ART, without evidence of increased harm or benefit by treatment (49).

Subsequent observational studies have demonstrated independent associations among CAC and increasing age, hyperapobetalipoproteinemia, C-reactive protein, and metabolic syndrome in HIV-infected patients (50,51). Similarly, the Multicenter AIDS Cohort Study also demonstrated that increasing age was the strongest predictor of CAC presence among HIV-infected and uninfected individuals (49). Another study reported that in addition to traditional CVD risk factors (including age), HIV serostatus and use of cocaine were associated with CAC among African-Americans (52). As most studies that measured CAC in HIV-infected individuals had relatively young subjects (mean age <50 years), they would be expected to have low rates of CAC presence, because CAC is a later finding in atherogenesis than is arterial wall thickening. Accordingly, in a study that compared CAC and carotid IMT in HIV-infected individuals, more than one-third of HIV patients with undetectable CAC had markedly increased IMT, suggesting that in young to middle-aged HIV-infected patients, carotid IMT may be a more sensitive indicator of subclinical vascular disease than CAC (53).

CTA recently has shed significant light on CVD risk in patients with HIV infection, because it can identify noncalcified as well as calcified plaque. In a cross-sectional study of 114 HIV-positive and 40 HIV-negative men, CAC scores were higher in those with metabolic syndrome, but CAC presence was not associated with HIV serostatus (54). However, CTA identified a higher prevalence of plaque in HIV-positive individuals due to an increased prevalence of noncalcified plaque segments (54). The Multicenter AIDS Cohort Study described the results of CTA in 343 HIV-infected and 176 HIV-negative men (Fig. 3) (55).

HIV positivity was associated independently with the extent of noncalcified plaque as well as diabetes mellitus, hypertension, and dyslipidemia, and independent associations with coronary stenoses of $\geq 50\%$ were identified with CD4 nadir, use of ART for >10 years, and detectable HIV RNA, even after adjustment for traditional CVD risk factors (55). Thus, an increased burden of noncalcified plaque identified by CTA appears to explain the weak and inconsistent associations previously described between CAC and HIV serostatus. Another study reported that among African-Americans with HIV infection, coronary stenoses of $\geq 50\%$ were independently associated with traditional CVD risk factors, long-term cocaine use (≥ 15 years), and exposure to ART for ≥ 6 months (56). In addition



to traditional CVD risk factors, HIV serostatus, use of cocaine, stavudine or lamivudine, and zidovudine also have been identified as independent associates of significant coronary stenosis (52).

In summary, CAC alone appears to be an inadequate research tool for studying arterial disease burden in young adults with HIV infection. Although CAC is associated with traditional CVD risk factors, it does not appear to identify HIV-related CVD risk. Recent CTA findings consistently demonstrate increased noncalcified coronary atherosclerosis among younger patients with HIV infection in association with traditional risk factors and HIV serostatus. The magnitude of increased CVD risk associated with the increased prevalence of noncalcified coronary atherosclerosis remains unclear because the studies cited in the previous text were relatively small and observational, and some only included women. CTA is a valuable research tool for evaluating the causes and extent of subclinical atherosclerosis among individuals with HIV infection.

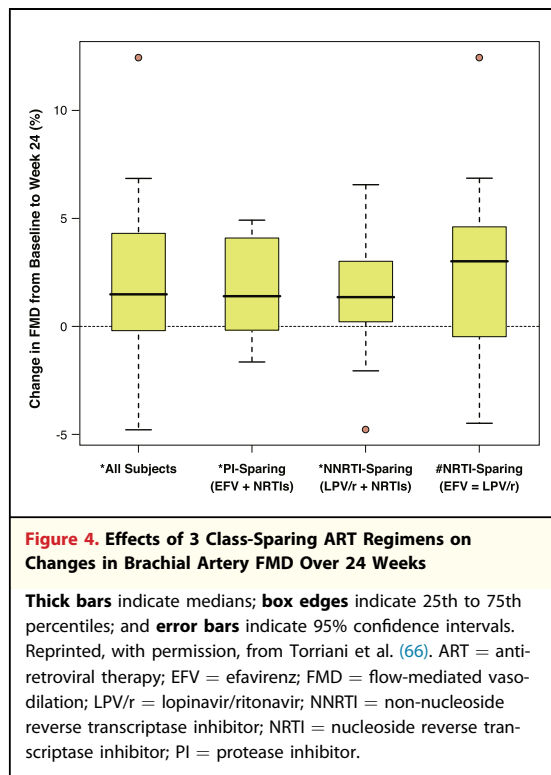
Brachial Artery Reactivity Testing

Brachial artery ultrasound can be used to assess FMD, a marker of endothelial function that predicts future CVD risk (57,58). As a sensitive and rapidly responsive biomarker, BART has played an important role in assessing the arterial pathophysiology of HIV infection and its treatments on CVD risk. Studies using BART have consistently demonstrated that patients with HIV infection have endothelial dysfunction relative to patients without HIV infection. In a case-control study of children (mean age 11 years), brachial-

artery FMD was significantly lower in HIV-infected patients compared with control patients ($p = 0.02$) and was worse among children treated with protease inhibitors ($p = 0.05$) (59). In children, endothelial dysfunction was present even after adjustment for baseline diameter and traditional CVD risk factors including C-reactive protein (59). In adults, case-control studies evaluating the effects of HIV infection on FMD have had inconsistent results (60–64). Each of these studies has been relatively small, with the largest including only 83 HIV-infected individuals, and the population characteristics as well as imaging techniques have varied between studies (60–63). A wide range of risk factors have been associated (albeit inconsistently) with impaired FMD among patients with HIV, including lipoprotein levels, HIV viral load, nadir CD4 T-cell count, intravenous drug use, systolic blood pressure, markers of insulin-glucose metabolism, and presence of metabolic syndrome, among others. Similarly, the relationship between C-reactive protein and FMD in individuals with HIV is uncertain. One study suggested that higher C-reactive protein was associated with impaired endothelial function in HIV-infected patients (65), but 4 others did not (59,62,63,66). Each study had <100 HIV infected subjects with varying demographic, CVD risk factor, and HIV treatment profiles.

In a prospective, randomized clinical trial of 82 ART-naïve individuals (median age 35 years) randomized to 3 treatment-sparing initial ART regimens, FMD improved after both 4 and 24 weeks of ART, with similar changes in all arms (Fig. 4) (66).

Change in FMD after 24 weeks of initiating ART was inversely associated with change in HIV RNA levels ($p = 0.017$), despite an increase in



brachial artery diameter, and after adjustment (66). They suggest, as have others, that high viral load causes endothelial dysfunction and that treatment of viremia improves the endothelial dysfunction associated with HIV infection (67). Collectively, BART studies suggest that, in individuals with HIV infection and active viral replication, the beneficial effects of ART outweigh the potential adverse effects of specific drug classes or adverse metabolic effects such as increases in lipids or changes in insulin-glucose metabolism.

BART studies that evaluated the effects of HIV protease inhibitors on FMD also have had mixed results, likely due to small sample sizes, varying subject characteristics, and different distributions of traditional CVD risk factors (59,60,64,68). However, 2 randomized studies using BART evaluated the effects of switching patients from early protease inhibitors to atazanavir, a protease inhibitor with less adverse metabolic effects; they did not show improvements in FMD despite improvements in lipids (69,70). Another randomized trial did not show improvement in FMD with raltegravir intensification in ART-suppressed patients (71). However, 2 randomized studies demonstrated improvements in endothelial function in dyslipidemic HIV-infected patients who received statins (72,73). Finally, observational data regarding the effects of

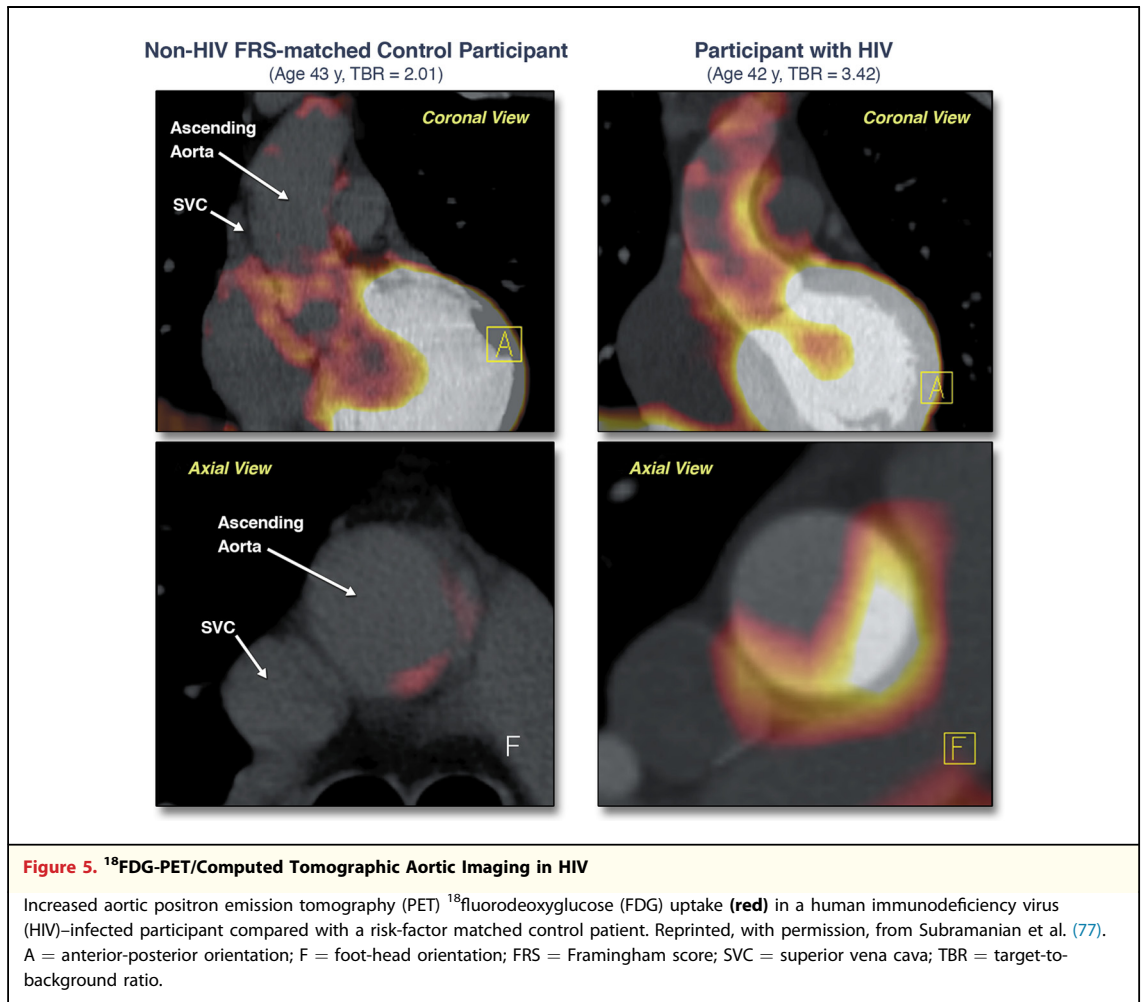
abacavir on FMD also have had divergent results. A single-center study of 61 treated and suppressed HIV-infected patients found that those taking abacavir had lower FMD (74); however, a study of 148 individuals who initially were assigned randomly to abacavir or tenofovir did not find lower FMD among those taking abacavir (75).

In summary, the results of BART studies suggest that untreated HIV infection and traditional CVD risk factors worsen FMD and that ART initiation and treatment of dyslipidemia with statins improve FMD. Switching patients off of protease inhibitors or intensifying ART does not improve endothelial function. Although ART initiation improves endothelial function, FMD remains abnormal even in the setting of treated and suppressed HIV infection. The long-term effects of abacavir on endothelial function remain unclear.

Imaging Arterial Inflammation With PET

A growing body of evidence suggests that, in addition to traditional CVD risk factors such as smoking, dyslipidemia, and components of the metabolic syndrome, inflammation may play a key role in increasing CVD risk among treated and suppressed HIV-infected patients. An observational study of over 70,000 subjects (487 HIV infected) demonstrated that elevated C-reactive protein (OR: 2.13, $p < 0.0001$) and HIV infection (OR: 1.93, $p = 0.004$) were independently associated with acute MI (18). Furthermore, the SMART study found that interruption of ART in chronic HIV infection was associated with high levels of interleukin-6 and D-dimers, that those biomarkers were associated with all-cause mortality and CVD events, and that ART initiation at higher CD4 positive T-cell counts reduced non-AIDS events, which mostly were due to CVD (19,20). These observations are supported by an observed improvement in brachial FMD with ART initiation and its observed inverse association with HIV RNA load (66), as well as the association of higher markers of T-cell activation and senescence with carotid plaque prevalence (41). Furthermore, more rapid progression of carotid IMT has been associated with chronic inflammation in individuals with HIV (42,43). Ultrasound and CT, however, are unable to directly image inflammation.

¹⁸F-fluorodeoxyglucose (¹⁸FDG) uptake by arterial macrophages can be used to image arterial inflammation and early atheroma formation using PET CT technology. In a proof-of-concept study, when compared with 5 HIV-negative individuals, 9



HIV-infected individuals with suppressed viremia on ART were shown to have higher ^{18}F FDG uptake in the carotid arteries (76). In another cross-sectional study, 27 HIV-infected individuals were compared with 2 non-HIV-infected control groups: 1 matched for age, sex, Framingham risk score, and lack of atherosclerotic disease, and the other matched on sex but with known atherosclerotic disease (77). Aortic ^{18}F FDG PET uptake was significantly higher in individuals with HIV compared with Framingham score-matched control patients, even after adjusting for traditional CVD risk factors ($p = 0.002$) and in multiple subanalyses (Fig. 5) (77).

Aortic ^{18}F FDG PET uptake was associated with levels of sCD163 ($p = 0.04$), a marker of monocyte and macrophage activation that tracks levels of HIV RNA and is associated with cellular markers of immune activation (17,78). sCD163 levels also have been associated with noncalcified plaque, but not with CAC, in ART-treated subjects with

undetectable HIV viral loads compared with HIV-negative control patients. However, markers of more generalized information such as C-reactive protein and D-dimers were not associated with sCD163, coronary plaque, or ^{18}F FDG PET uptake (78).

Conclusions

Arterial imaging is a useful tool for investigating CVD risk among patients with HIV infection and for exploring its causes. Carotid ultrasound, coronary CT, brachial artery ultrasound, and more recently, ^{18}F FDG PET have provided important insights into the prevalence and pathophysiology of HIV-associated CVD risk. In general, the findings of studies using carotid ultrasound, coronary CT angiography, and ^{18}F FDG PET agree with those from observational studies of CVD events and suggest that HIV infection is associated with an increased risk of CVD. BART has been especially

useful for elucidating the arterial pathophysiology of HIV infection and its treatments, as well as the arterial effects of interventions for treating HIV and dyslipidemia. ¹⁸F-DG PET has been especially useful for evaluating arterial inflammation. CAC has not proven to be a useful marker of subclinical atherosclerosis in HIV-infected individuals.

Observational studies of CVD outcomes and studies using carotid IMT suggest that there is a moderate increase in CVD risk related to HIV serostatus. Less can be said about the role of ART and specific ART therapies on CVD risk, mainly because imaging studies have had serious methodological limitations that diminish their generalizability. Studies that have harnessed the power of randomized clinical trials have been especially powerful in clarifying the relationships between ART and use of statins in HIV-infected patients.

The identification of improved endothelial function with viral suppression and ART, of an excess of noncalcified coronary plaque in patients with HIV infection, and of increased arterial inflammation in suppressed HIV patients have opened up new pathways for investigating the effects of persistent inflammation and immune dysregulation on CVD risk among ART-suppressed individuals. The generalizability and impact of imaging studies in HIV-infected patients will increase with greater use of randomized clinical trial designs, with larger studies with longer follow-up, and with improved standardization of the imaging outcome measures.

Reprint requests and correspondence: Dr. James H. Stein, 600 Highland Avenue, Room H4/520 CSC, MC 3248, Madison, Wisconsin 53792. *E-mail:* jhs@medicine.wisc.edu.

REFERENCES

1. Sackoff JE, Hanna DB, Pfeiffer MR, Torian LV. Causes of death among persons with AIDS in the era of highly active antiretroviral therapy: New York City. *Ann Intern Med* 2006;145:397-406.
2. Morlat P, Roussillon S, Henard E, et al. Evolution of the causes of death among HIV+ patients between 2000 and 2010: results of the French national survey "ANRS EN20 Mortalité 2010." Paper presented at: 19th Conference on Retroviruses and Opportunistic Infections; March 2012; Seattle, WA.
3. Klein D, Hurley LB, Quesenberry JC, Sidney S. Do protease inhibitors increase the risk for coronary heart disease in patients with HIV-1 infection? *J Acquir Immune Defic Syndr* 2002;30:471-7.
4. Currier JS, Taylor A, Boyd F, et al. Coronary heart disease in HIV-infected individuals. *J Acquir Immune Defic Syndr* 2003;33:506-12.
5. Obel N, Thomsen HF, Kronborg G, et al. Ischemic heart disease in HIV-infected and HIV-uninfected individuals: a population-based cohort study. *Clin Infect Dis* 2007;44:1625-31.
6. Lang S, Mary-Krause M, Cotte L, et al. Increased risk of myocardial infarction in HIV-infected patients in France, relative to the general population. *AIDS* 2010;24:1228-30.
7. Triant VA, Lee H, Hadigan C, Grinspoon SK. Increased acute myocardial infarction rates and cardiovascular risk factors among patients with human immunodeficiency virus disease. *J Clin Endocrinol Metab* 2007;92:2506-12.
8. Freiberg MS, Chang CC, Kuller LH, et al. HIV infection and the risk of acute myocardial infarction. *JAMA Intern Med* 2013;173:614-22.
9. Boccaro F, Lang S, Meuleman C, et al. HIV and coronary heart disease: time for a better understanding. *J Am Coll Cardiol* 2013;61:511-23.
10. Tesoriero JM, Gieryc SM, Carrascal A, Lavigne HE. Smoking among HIV positive New Yorkers: prevalence, frequency, and opportunities for cessation. *AIDS Behav* 2010;14:824-35.
11. Nahvi S, Cooperman NA. Review: the need for smoking cessation among HIV-positive smokers. *AIDS Educ Prev* 2009;21:14-27.
12. Friis-Moller N, Reiss P, Sabin CA, et al. Class of antiretroviral drugs and the risk of myocardial infarction. *N Engl J Med* 2007;356:1723-35.
13. Worm SW, Sabin C, Weber R, et al. Risk of myocardial infarction in patients with HIV infection exposed to specific individual antiretroviral drugs from the 3 major drug classes: the data collection on adverse events of anti-HIV drugs (D:A:D) study. *J Infect Dis* 2010;201:318-30.
14. Lang S, Mary-Krause M, Cotte L, et al. Impact of individual antiretroviral drugs on the risk of myocardial infarction in human immunodeficiency virus-infected patients: a case-control study nested within the French Hospital Database on HIV ANRS cohort CO4. *Arch Intern Med* 2010;170:1228-38.
15. Brothers CH, Hernandez JE, Cutrell AG, et al. Risk of myocardial infarction and abacavir therapy: no increased risk across 52 GlaxoSmithKline-sponsored clinical trials in adult subjects. *J Acquir Immune Defic Syndr* 2009;51:20-8.
16. Bozzette SA, Ake CF, Tam HK, et al. Cardiovascular and cerebrovascular events in patients treated for human immunodeficiency virus infection. *N Engl J Med* 2003;348:702-10.
17. Stein JH, Hsue PY. Inflammation, immune activation, and CVD risk in individuals with HIV infection. *JAMA* 2012;308:405-6.
18. Triant VA, Meigs JB, Grinspoon SK. Association of C-reactive protein and HIV infection with acute myocardial infarction. *J Acquir Immune Defic Syndr* 2009;51:268-73.
19. Kuller LH, Tracy R, Belloso W, et al. Inflammatory and coagulation biomarkers and mortality in patients with HIV infection. *PLoS Med* 2008;5:e203.
20. Emery S, Neuhaus JA, Phillips AN, et al. Major clinical outcomes in antiretroviral therapy (ART)-naive participants and in those not receiving ART at baseline in the SMART study. *J Infect Dis* 2008;197:1133-44.
21. Nahrendorf M, Pittet MJ, Swirski FK. Monocytes: protagonists of infarct inflammation and repair after

- myocardial infarction. *Circulation* 2010;121:2437-45.
22. Dutta P, Courties G, Wei Y, et al. Myocardial infarction accelerates atherosclerosis. *Nature* 2012;487:325-9.
 23. Stein JH, Korcarz CE, Hurst RT, et al. Use of carotid ultrasound to identify subclinical vascular disease and evaluate cardiovascular disease risk: a consensus statement from the American Society of Echocardiography Carotid Intima-Media Thickness Task Force. *J Am Soc Echocardiogr* 2008;21:93-111.
 24. Lorenz MW, Markus HS, Bots ML, Rosvall M, Sitzer M. Prediction of clinical cardiovascular events with carotid intima-media thickness: a systematic review and meta-analysis. *Circulation* 2007;115:459-67.
 25. Den Ruijter HM, Peters SA, Anderson TJ, et al. Common carotid intima-media thickness measurements in cardiovascular risk prediction: a meta-analysis. *JAMA* 2012;308:796-803.
 26. Inaba Y, Chen JA, Bergmann SR. Carotid plaque, compared with carotid intima-media thickness, more accurately predicts coronary artery disease events: a meta-analysis. *Atherosclerosis* 2012;220:128-33.
 27. Espeland MA, O'Leary DH, Terry JG, Morgan T, Evans G, Mudra H. Carotid intimal-media thickness as a surrogate for cardiovascular disease events in trials of HMG-CoA reductase inhibitors. *Curr Control Trials Cardiovasc Med* 2005;6:3.
 28. Goldberger ZD, Valle JA, Dandekar VK, Chan PS, Ko DT, Nallamothu BK. Are changes in carotid intima-media thickness related to risk of nonfatal myocardial infarction? A critical review and meta-regression analysis. *Am Heart J* 2010;160:701-14.
 29. Lorenz MW, Polak JF, Kavousi M, et al. Carotid intima-media thickness progression to predict cardiovascular events in the general population (the PROG-IMT collaborative project): a meta-analysis of individual participant data. *Lancet* 2012;379:2053-62.
 30. Hulten E, Mitchell J, Scally J, Gibbs B, Villines TC. HIV positivity, protease inhibitor exposure and subclinical atherosclerosis: a systematic review and meta-analysis of observational studies. *Heart* 2009;95:1826-35.
 31. Grunfeld C, Delaney JA, Wanke C, et al. Preclinical atherosclerosis due to HIV infection: carotid intima-medial thickness measurements from the FRAM study. *AIDS* 2009;23:1841-9.
 32. Hsue PY, Lo JC, Franklin A, et al. Progression of atherosclerosis as assessed by carotid intima-media thickness in patients with HIV infection. *Circulation* 2004;109:1603-8.
 33. Currier JS, Kendall MA, Henry WK, et al. Progression of carotid artery intima-media thickening in HIV-infected and uninfected adults. *AIDS* 2007;21:1137-45.
 34. Mercie P, Thiebaut R, Aurillac-Lavignolle V, et al. Carotid intima-media thickness is slightly increased over time in HIV-1-infected patients. *HIV Med* 2005;6:380-7.
 35. Baker JV, Henry WK, Patel P, et al. Progression of carotid intima-media thickness in a contemporary human immunodeficiency virus cohort. *Clin Infect Dis* 2011;53:826-35.
 36. Mangili A, Polak JF, Skinner SC, et al. HIV infection and progression of carotid and coronary atherosclerosis: the CARE study. *J Acquir Immune Defic Syndr* 2011;58:148-53.
 37. Hsue PY, Scherzer R, Hunt PW, et al. Carotid intima-media thickness progression in HIV-infected adults occurs preferentially at the carotid bifurcation and is predicted by inflammation. *J Am Heart Assoc* 2012;1.
 38. van Vonderen MG, Hassink EA, van Agtmael MA, et al. Increase in carotid artery intima-media thickness and arterial stiffness but improvement in several markers of endothelial function after initiation of antiretroviral therapy. *J Infect Dis* 2009;199:1186-94.
 39. Aragonés G, Pardo-Reche P, Fernández-Sender L, et al. The deleterious influence of tenofovir-based therapies on the progression of atherosclerosis in HIV-infected patients. *Mediators Inflamm* 2012;2012:372305.
 40. Delaney JA, Scherzer R, Biggs ML, et al. Associations of antiretroviral drug use and HIV-specific risk factors with carotid intima-media thickness. *AIDS* 2010;24:2201-9.
 41. Kaplan RC, Sinclair E, Landay AL, et al. T cell activation and senescence predict subclinical carotid artery disease in HIV-infected women. *J Infect Dis* 2011;203:452-63.
 42. Hsue PY, Hunt PW, Sinclair E, et al. Increased carotid intima-media thickness in HIV patients is associated with increased cytomegalovirus-specific T-cell responses. *AIDS* 2006;20:2275-83.
 43. Hsue PY, Hunt PW, Schnell A, et al. Role of viral replication, antiretroviral therapy, and immunodeficiency in HIV-associated atherosclerosis. *AIDS* 2009;23:1059-67.
 44. Kelesidis T, Yang O, Kendall M, Hodis H, Currier JC. Biomarkers of microbial translocation and macrophage activation are associated with progression of atherosclerosis in HIV infection: ACTG NWCS 332/A5078 Study. Paper presented at: 19th Conference on Retroviruses and Opportunistic Infections; March 2012; Seattle, WA.
 45. Greenland P, Alpert JS, Beller GA, et al. 2010 ACCF/AHA guideline for assessment of cardiovascular risk in asymptomatic adults: a report of the American College of Cardiology Foundation/American Heart Association Task Force on Practice Guidelines. *J Am Coll Cardiol* 2010;56:e50-103.
 46. Detrano R, Guerci AD, Carr JJ, et al. Coronary calcium as a predictor of coronary events in four racial or ethnic groups. *N Engl J Med* 2008;358:1336-45.
 47. Pletcher MJ, Tice JA, Pignone M, Browner WS. Using the coronary artery calcium score to predict coronary heart disease events: a systematic review and meta-analysis. *Arch Intern Med* 2004;164:1285-92.
 48. Yeboah J, McClelland RL, Polonsky TS, et al. Comparison of novel risk markers for improvement in cardiovascular risk assessment in intermediate-risk individuals. *JAMA* 2012;308:788-95.
 49. Kingsley LA, Cuervo-Rojas J, Munoz A, et al. Subclinical coronary atherosclerosis, HIV infection and antiretroviral therapy: Multicenter AIDS Cohort Study. *AIDS* 2008;22:1589-99.
 50. Mangili A, Gerrior J, Tang AM, et al. Risk of cardiovascular disease in a cohort of HIV-infected adults: a study using carotid intima-media thickness and coronary artery calcium score. *Clin Infect Dis* 2006;43:1482-9.
 51. Mangili A, Jacobson DL, Gerrior J, Polak JF, Gorbach SL, Wanke CA. Metabolic syndrome and subclinical atherosclerosis in patients infected with HIV. *Clin Infect Dis* 2007;44:1368-74.
 52. Lai S, Lima JA, Lai H, et al. Human immunodeficiency virus 1 infection, cocaine, and coronary calcification. *Arch Intern Med* 2005;165:690-5.
 53. Hsue PY, Ordovas K, Lee T, et al. Carotid intima-media thickness among human immunodeficiency virus-infected patients without coronary calcium. *Am J Cardiol* 2012;109:742-7.
 54. Fitch KV, Lo J, Abbara S, et al. Increased coronary artery calcium score and noncalcified plaque among HIV-infected men: relationship to metabolic syndrome and cardiac risk parameters. *J Acquir Immune Defic Syndr* 2010;55:495-9.
 55. Post W, Jacobson L, Li X, et al. HIV infection is associated with greater amounts of non-calcified coronary

- artery plaque: MACS. Paper presented at: 19th Conference on Retroviruses and Opportunistic Infections; March 2012; Seattle, WA.
56. Lai S, Fishman EK, Lai H, et al. Long-term cocaine use and antiretroviral therapy are associated with silent coronary artery disease in African Americans with HIV infection who have no cardiovascular symptoms. *Clin Infect Dis* 2008;46:600-10.
 57. Deanfield JE, Halcox JP, Rabelink TJ. Endothelial function and dysfunction: testing and clinical relevance. *Circulation* 2007;115:1285-95.
 58. Yeboah J, Crouse JR, Hsu FC, Burke GL, Herrington DM. Brachial flow-mediated dilation predicts incident cardiovascular events in older adults: the Cardiovascular Health Study. *Circulation* 2007;115:2390-7.
 59. Charakida M, Donald AE, Green H, et al. Early structural and functional changes of the vasculature in HIV-infected children: impact of disease and antiretroviral therapy. *Circulation* 2005;112:103-9.
 60. Solages A, Vita JA, Thornton DJ, et al. Endothelial function in HIV-infected persons. *Clin Infect Dis* 2006;42:1325-32.
 61. Blanco JJ, Garcia IS, Cerezo JG, et al. Endothelial function in HIV-infected patients with low or mild cardiovascular risk. *J Antimicrob Chemother* 2006;58:133-9.
 62. Nolan D, Watts GF, Herrmann SE, French MA, John M, Mallal S. Endothelial function in HIV-infected patients receiving protease inhibitor therapy: does immune competence affect cardiovascular risk? *QJM* 2003;96:825-32.
 63. van Wijk JP, de Koning EJ, Cabezas MC, et al. Functional and structural markers of atherosclerosis in human immunodeficiency virus-infected patients. *J Am Coll Cardiol* 2006;47:1117-23.
 64. Mondy KE, de las FL, Waggoner A, et al. Insulin resistance predicts endothelial dysfunction and cardiovascular risk in HIV-infected persons on long-term highly active antiretroviral therapy. *AIDS* 2008;22:849-56.
 65. Ho JE, Scherzer R, Hecht FM, et al. The association of CD4+ T-cell count on cardiovascular risk in treated HIV disease. *AIDS* 2012;26:1115-20.
 66. Torriani FJ, Komarow L, Parker RA, et al. Endothelial function in human immunodeficiency virus-infected antiretroviral-naïve subjects before and after starting potent antiretroviral therapy: The ACTG (AIDS Clinical Trials Group) Study 5152s. *J Am Coll Cardiol* 2008;52:569-76.
 67. Blum A, Hadas V, Burke M, Yust I, Kessler A. Viral load of the human immunodeficiency virus could be an independent risk factor for endothelial dysfunction. *Clin Cardiol* 2005;28:149-53.
 68. Stein JH, Klein MA, Bellehumeur JL, et al. Use of human immunodeficiency virus-1 protease inhibitors is associated with atherogenic lipoprotein changes and endothelial dysfunction. *Circulation* 2001;104:257-62.
 69. Flammer AJ, Vo NT, Ledergerber B, et al. Effect of atazanavir versus other protease inhibitor-containing antiretroviral therapy on endothelial function in HIV-infected persons: randomised controlled trial. *Heart* 2009;95:385-90.
 70. Murphy RL, Berzins B, Zala C, et al. Change to atazanavir/ritonavir treatment improves lipids but not endothelial function in patients on stable antiretroviral therapy. *AIDS* 2010;24:885-90.
 71. Hatano H, Scherzer R, Wu Y, et al. A randomized controlled trial assessing the effects of raltegravir intensification on endothelial function in treated HIV infection. *J Acquir Immune Defic Syndr* 2012;61:317-25.
 72. Hurlimann D, Chenevard R, Ruschitzka F, et al. Effects of statins on endothelial function and lipid profile in HIV infected persons receiving protease inhibitor-containing antiretroviral combination therapy: a randomised double blind crossover trial. *Heart* 2006;92:110-2.
 73. Stein JH, Merwood MA, Bellehumeur JL, et al. Effects of pravastatin on lipoproteins and endothelial function in patients receiving human immunodeficiency virus protease inhibitors. *Am Heart J* 2004;147:E18.
 74. Hsue PY, Hunt PW, Wu Y, et al. Association of abacavir and impaired endothelial function in treated and suppressed HIV-infected patients. *AIDS* 2009;23:2021-7.
 75. Wohl D, Arnoczky G, Fichtenbaum C, et al. Cardiovascular disease (CVD) risk markers in patients receiving abacavir, tenofovir, and zidovudine: The Nucleoside Inflammation, Coagulation and Endothelial Function (NICE) Study. Paper presented at: 19th Conference on Retroviruses and Opportunistic Infections; March 2012; Seattle, WA.
 76. Yarasheski KE, Lacity E, Overton ET, et al. 18FDG PET-CT imaging detects arterial inflammation and early atherosclerosis in HIV-infected adults with cardiovascular disease risk factors. *J Inflamm (Lond)* 2012;9:26.
 77. Subramanian S, Tawakol A, Burdo TH, et al. Arterial inflammation in patients with HIV. *JAMA* 2012;308:379-86.
 78. Burdo TH, Lentz MR, Autissier P, et al. Soluble CD163 made by monocyte/macrophages is a novel marker of HIV activity in early and chronic infection prior to and after anti-retroviral therapy. *J Infect Dis* 2011;204:154-63.
-
- Key Words:** carotid intima-media thickness ■ coronary arteries ■ endothelial function ■ HIV ■ ultrasound.