



E-QUID: QUESTION / *Musculoskeletal imaging*

Wrist pain



M. Kahloune^{a,*}, X. Libouton^b, P. Omoumi^a, A. Larbi^a

^a *Radiology Department, Saint-Luc University Hospitals, av. Hippocrate 10, 1200 Brussels, Belgium*

^b *Orthopedic and Trauma Surgery Department, Saint Luc University Hospitals, av. Hippocrate 10, 1200 Brussels, Belgium*

Observation

A 71-year-old man was referred by his general practitioner for an orthopedic surgery consultation for intermittent pain on the radial side of the right wrist with swelling which had developed over 18 months despite no history of trauma. His history included a fracture of the distal end of the left radius operated on about 12 years previously. Clinical examination found moderate limitation of movement and pain on palpation of the radial side of the wrist. X-ray images of the right wrist ([Fig. 1](#)) and a non-contrast-enhanced CT scan of both wrists ([Figs. 2 and 3](#)) were available, obtained before the consultation.

* Corresponding author.

E-mail address: merouane.kahloune@uclouvain.be (M. Kahloune).



Figure 1. AP X-ray image of the right wrist.

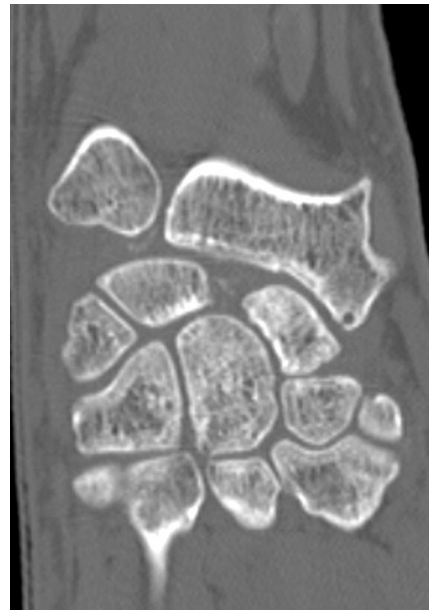


Figure 3. Coronal CT slice of the left wrist.



Figure 2. Coronal CT slice of the right wrist.

What is your diagnosis?

From the observations, what would your diagnosis be from among the following?

- gout;
- rheumatoid arthritis;
- scapholunate advanced collapse (SLAC) wrist combined with chondrocalcinosis;
- hydroxyapatite.

Disclosure of interest

The authors declare that they have no conflicts of interest concerning this article.