

A Chemical Probe that Labels Human Pluripotent Stem Cells

Nao Hirata,^{1,2,9} Masato Nakagawa,^{3,9} Yuto Fujibayashi,^{4,9} Kaori Yamauchi,^{5,9} Asako Murata,^{1,2,9} Itsunari Minami,¹ Maiko Tomioka,¹ Takayuki Kondo,³ Ting-Fang Kuo,^{1,2} Hiroshi Endo,^{3,8} Haruhisa Inoue,³ Shin-ichi Sato,^{1,2} Shin Ando,^{1,2} Yoshinori Kawazoe,² Kazuhiro Aiba,¹ Koh Nagata,¹ Eihachiro Kawase,⁵ Young-Tae Chang,^{6,7} Hirofumi Suemori,⁵ Koji Eto,³ Hiromitsu Nakauchi,⁸ Shinya Yamanaka,^{1,3} Norio Nakatsuji,^{1,5,*} Kazumitsu Ueda,^{1,4,*} and Motonari Uesugi^{1,2,*}

¹Institute for Integrated Cell-Material Sciences (WPI-iCeMS), Kyoto University, Kyoto 606-8501, Japan

²Institute for Chemical Research, Kyoto University, Uji, Kyoto 611-0011, Japan

³Center for iPS Cell Research and Application, Kyoto University, Kyoto 606-8507, Japan

⁴Division of Applied Life Sciences, Graduate School of Agriculture, Kyoto University, Kyoto 606-8502, Japan

⁵Stem Cell Research Center, Institute for Frontier Medical Sciences, Kyoto University, Kyoto 606-8507, Japan

⁶Department of Chemistry & MedChem Program of Life Sciences Institute, National University of Singapore, Singapore 117543, Singapore

⁷Laboratory of Bioimaging Probe Development, Singapore Bioimaging Consortium, Agency for Science, Technology and Research (A*STAR), Singapore 138667, Singapore

⁸Laboratory of Stem Cell Therapy, Center for Experimental Medicine, Institute of Medical Science, University of Tokyo, Tokyo 108-8639, Japan

⁹These authors contributed equally to this work

*Correspondence: nnakatsu@icems.kyoto-u.ac.jp (N.N.), uedak@kais.kyoto-u.ac.jp (K.U.), uesugi@scl.kyoto-u.ac.jp (M.U.)
<http://dx.doi.org/10.1016/j.celrep.2014.02.006>

This is an open access article under the CC BY license (<http://creativecommons.org/licenses/by/3.0/>).

SUMMARY

A small-molecule fluorescent probe specific for human pluripotent stem cells would serve as a useful tool for basic cell biology research and stem cell therapy. Screening of fluorescent chemical libraries with human induced pluripotent stem cells (iPSCs) and subsequent evaluation of hit molecules identified a fluorescent compound (Kyoto probe 1 [KP-1]) that selectively labels human pluripotent stem cells. Our analyses indicated that the selectivity results primarily from a distinct expression pattern of ABC transporters in human pluripotent stem cells and from the transporter selectivity of KP-1. Expression of ABCB1 (MDR1) and ABCG2 (BCRP), both of which cause the efflux of KP-1, is repressed in human pluripotent stem cells. Although KP-1, like other pluripotent markers, is not absolutely specific for pluripotent stem cells, the identified chemical probe may be used in conjunction with other reagents.

INTRODUCTION

Human embryonic stem cells (hESCs) (Thomson et al., 1998) and induced pluripotent stem cells (iPSCs) (Takahashi et al., 2007) have been serving as valuable tools for basic biological research and as promising resources for regeneration therapy. Despite advances, substantial challenges remain for the clinical application of stem cells. One safety concern has been posed by the appearance of teratomas in animal models transplanted with cell samples containing a small number of

undifferentiated stem cells. Methods of detecting and ablating undifferentiated stem cells are required for safer stem cell therapy.

Antibodies against stage-specific embryonic antigens 4 and 5 (SSEA-4 and SSEA-5) have been used extensively to detect human pluripotent stem cells (Henderson et al., 2002; Tang et al., 2011; Thomson et al., 1998). SSEA-4 is a glycolipid that is expressed in early embryos and, for unknown reasons, is presented selectively on the surface of hESCs and embryonic carcinoma (EC) cells (Henderson et al., 2002). SSEA-5, which is classified as an H-type 1 glycan, is a recently identified antigen specifically expressed in human pluripotent stem cells (Tang et al., 2011). Other markers of human stem cells include Oct3/Oct4 and Nanog, which are transcription factors required for the maintenance of undifferentiated states of stem cells and are downregulated upon differentiation (Chambers et al., 2003; Mitsui et al., 2003; Niwa et al., 2000; Pesce and Schöler, 2001; Rosner et al., 1990). Although their antibodies are highly useful for detecting pluripotent cells, these unstable protein tools suffer from high cost and often require fixation and permeabilization of cells. Alkaline phosphatase is another routinely used marker of human stem cells (Shamblott et al., 1998; Thomson et al., 1995). Although the assay for its enzymatic activity provides a simple method for detecting stem cells, this housekeeping enzyme is expressed in a number of other cell types, and its specificity to pluripotent stem cells is a major concern. A small molecule fluorescent probe specific for human pluripotent stem cells would permit their rapid detection and separation. Furthermore, small molecule probes provide reversible detection that can be tuned by varying the dose. Stable, chemically defined, and cost-effective synthetic probes would offer significant advantages as tools for basic research and for lowering the risk of tumor formation in stem cell therapy.

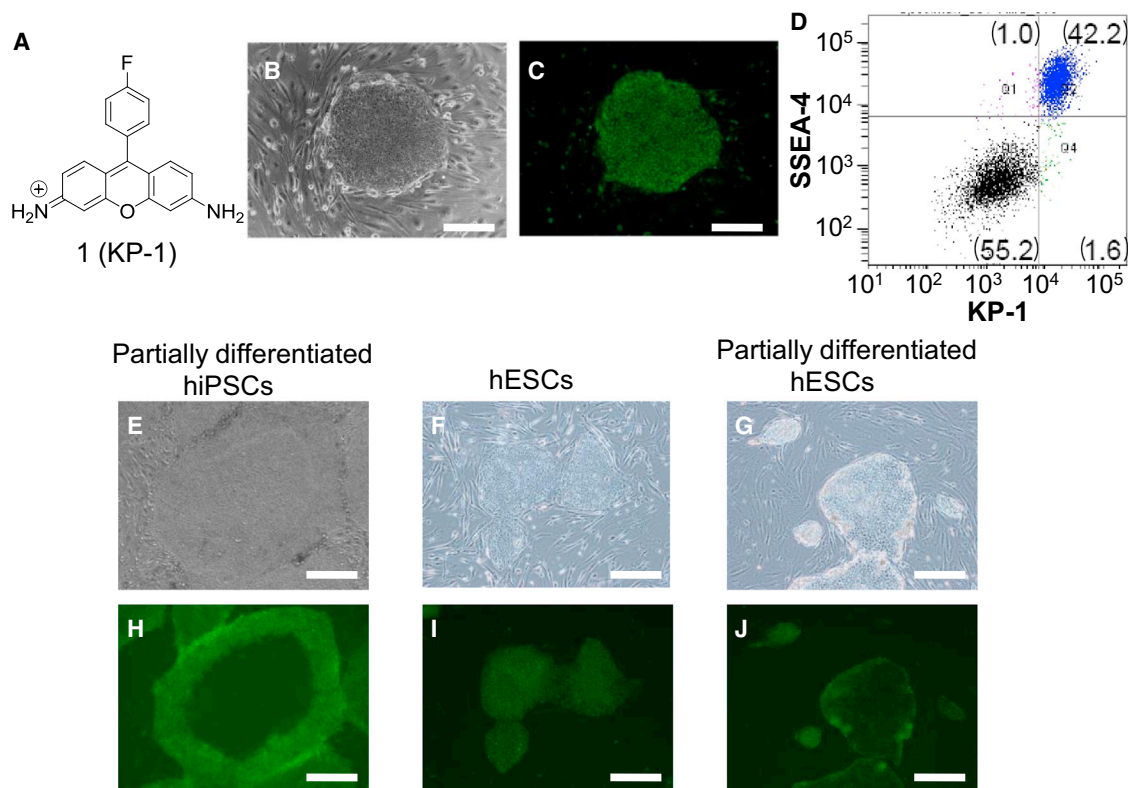


Figure 1. Discovery of KP-1

(A) Chemical structure of KP-1.

(B) Bright-field image of hiPSCs on mouse STO feeder cells. Scale bar represents 300 μm .

(C) Fluorescence image of hiPSCs on feeder cells incubated with KP-1 (2 μM) for 3 hr. Scale bar represents 300 μm .

(D) Flow cytometric analysis of a mixture of hiPSCs and feeder cells doubly stained with KP-1 and α -SSEA-4-Alexa 647. hiPSCs and feeder cells were dissociated with Accutase into single cells and stained with KP-1 (2 μM) for 3 hr and a fluorescence-labeled anti-SSEA-4 (α -SSEA-4-Alexa 647) for 30 min.

(E–J) Effects of cell differentiation on the staining pattern of KP-1. (E) Bright-field and (H) fluorescence images are shown of a partially differentiated hiPSC colony incubated with KP-1 (4 μM) for 4.5 hr. (F) Bright-field and (I) fluorescence images are shown of hESC colonies incubated with KP-1 (1 μM) for 2 hr. (G) Bright-field and (J) fluorescence images are shown of partially differentiated hESC colonies incubated with KP-1 (1 μM) for 2 hr. hESCs were treated with 500 nM retinoic acid for 4 days. Scale bars represent 450 μm .

See also [Figures S1–S3](#).

RESULTS

Discovery of Kyoto Probe 1

To identify a fluorescent probe that is selective for human pluripotent stem cells, we screened 326 fluorescent compounds from chemical libraries ([Ahn et al., 2007](#); [Kawazoe et al., 2011](#)). The image-based screening using human iPS cells (hiPSCs) isolated 21 molecules that stained hiPSCs more strongly than they stained feeder cells (mouse STO cells). We focused our subsequent efforts on a highly fluorescent rhodamine molecule (molecule 1, Kyoto probe 1 [KP-1]), which displayed the greatest selectivity ([Figures 1A–1C](#)). The excitation and emission spectra and fluorescent properties of KP-1 are shown in [Figure S1A](#).

The selectivity of KP-1 for hiPSCs was confirmed by flow cytometry ([Figures 1D](#), [S1B](#), and [S1C](#)). Mixtures of hiPSCs and feeder cells were treated with KP-1 ([Figure S1B](#)), an Alexa Fluor 647-labeled anti-SSEA-4 ([Figure S1C](#)), or both ([Figure 1D](#)). When the cells were stained simultaneously with KP-1 and the anti-SSEA-4, KP-1 stained essentially all of the SSEA-4-positive

cells, but not the SSEA-4-negative cells. Thus, KP-1 is capable of differentiating between hiPSCs and feeder cells. To examine the proportion of hiPSCs that is stained by KP-1, we carried out similar experiments using feeder-free culture conditions ([Figures S1D–S1G](#)). The results indicated that KP-1 stained 99.18% of hiPSCs, whereas an SSEA-4 antibody labeled 98.17% of hiPSCs.

An observation made during our evaluation of KP-1 further confirmed its specificity for pluripotent stem cells. When iPSCs are overgrown, central parts of the colonies tend to initiate differentiation, due to contact inhibition ([Bortell et al., 1992](#); [Green and Meuth, 1974](#)). Treatment with KP-1 selectively stained the undifferentiated parts of such colonies, but not the central parts ([Figures 1E](#) and [1H](#)). When similar experiments were conducted with colonies of hESCs ([Suemori et al., 2006](#)), the colonies were stained more strongly than the feeder cells ([Figures 1F](#) and [1I](#)). When the colonies were partially differentiated by treatment with retinoic acid ([Ben-Shushan et al., 1995](#)), the differentiated parts of the colonies were less densely

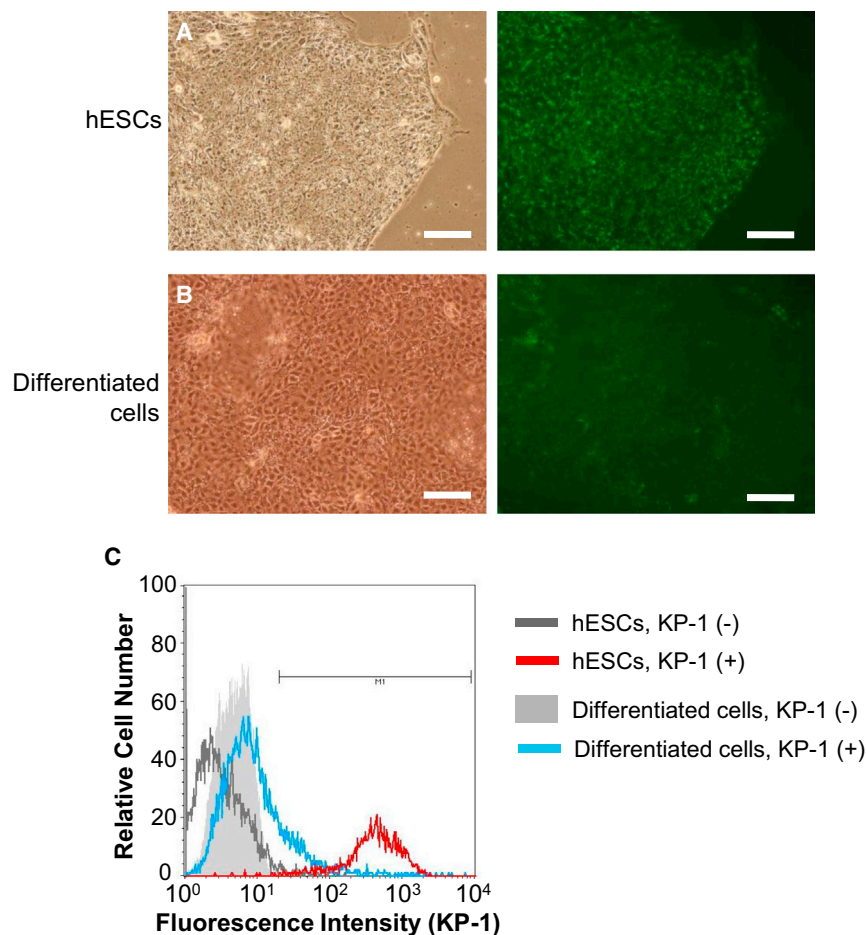


Figure 2. Selective Staining of hESCs by KP-1

(A and B) Fluorescence microscopic imaging of (A) hESCs and (B) ESC-derived differentiated cells in the presence of KP-1 (1 μ M). Differentiated cells were derived from hESCs by treatment with retinoic acid (500 nM) for 4 days and treated with KP-1 (1 μ M) for 1 hr. The left panels show bright-field images, and the right panels show fluorescence images. Scale bars represent 100 μ m.

(C) Fluorescence histograms from flow cytometric analysis of hESCs and the ESC-derived differentiated cells.

See also Figure S2.

stained (Figures 1G and 1J). Flow cytometric analysis of hESCs and retinoid-treated differentiated cells revealed that ESCs were stained \sim 100-fold more strongly by KP-1 than the differentiated cells (Figure 2). These observations suggest that KP-1 is capable of distinguishing between pluripotent stem cells and differentiated cells.

Mitochondrial Localization of KP-1

What is the basis for the selectivity of KP-1? KP-1 appears to be cell permeable, and its subcellular localization overlaps with that of MitoTracker Red (MitoRed) (Minamikawa et al., 1999), a mitochondria-selective fluorescent marker (Figure S2). MitoRed labeled mitochondria both in hiPSCs and feeder cells; however, KP-1 stained mitochondria only in iPSCs (Figures S2A–S2E), indicating that KP-1 localizes in the mitochondria of human pluripotent stem cells. The staining pattern of KP-1 remained the same in the presence of CCCP, an uncoupling reagent that disrupts the mitochondrial membrane potential (Heytler, 1963; Kasianowicz et al., 1984), indicating that the staining properties of KP-1 are independent of the membrane potential (Figures S2F–S2I).

To isolate mitochondrial proteins that interact with KP-1, we synthesized a chloroacetyl derivative of KP-1 (Figure S3A). Although this highly reactive derivative is slightly less selective

than KP-1, perhaps due to its rapid formation of covalent bonds to cellular proteins (Svensson et al., 2002), it still localized in mitochondria of hiPSCs (Figures S3B–S3I). We treated hiPSCs with the chloroacetyl derivative of KP-1 and used 2D SDS-PAGE to isolate mitochondrial proteins labeled with KP-1 (Figure S3J). Mass-sequencing analysis (Mann et al., 2001) of the fluorescently labeled bands revealed peptide sequences of aldehyde dehydrogenase 2 (ALDH2), a mitochondrial enzyme that has been reported to interact with a rhodamine derivative (Kim et al., 2011). Although binding to ALDH2 might account for the mitochondrial localization of KP-1, this abundant enzyme is expressed in numerous cell types (Greenfield and Pi-

etruszko, 1977) and is not likely to be responsible for the selectivity of KP-1 for pluripotent stem cells.

KP-1 Selectivity and ABC Transporters

Concurrent with our study of KP-1, an independent project was investigating the expression levels of 44 ATP binding cassette (ABC) transporters in hESCs and iPSCs. ABC proteins transport hydrophobic small molecules and lipids across cell membranes in an ATP-dependent manner (Moitra and Dean, 2011; Ueda, 2011; Young and Holland, 1999) and are involved in protection against xenobiotics and cholesterol homeostasis (Ueda, 2011). The investigation with five lines of hESCs and three lines of iPSCs showed intriguing expression patterns of four ABC proteins involved in xenobiotic efflux (Figure 3A). RT-PCR experiments revealed that both hESCs and iPSCs express ABCC1 (multidrug-resistance protein 1 [MRP1]) and ABCG2 (breast cancer-resistance protein [BCRP]) at detectable levels but have little, if any, expression of ABCB1 (MDR1) and ABCG2 (MRP2) transporters. Expression levels of ABCB1 and ABCG2 were markedly higher (29- and 24-fold, respectively) in differentiated cells prepared with retinoic acid, which express the differentiation marker, CDX2 (Bernardo et al., 2011; Niwa et al., 2005), than in human pluripotent stem cells (Figure 3B).

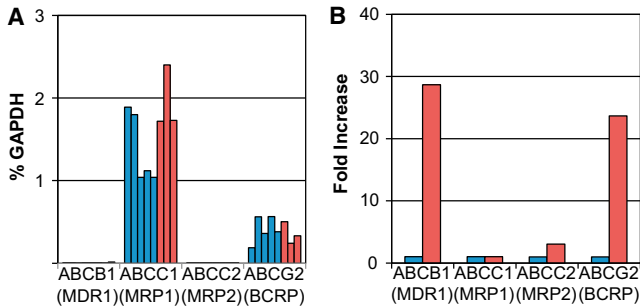


Figure 3. Expression Patterns of ABC Transporters in Human Pluripotent Stem Cells

(A) Comparison of mRNA expression levels of ABCB1 (MDR1), ABCC1 (MRP1), ABCC2 (MRP2), and ABCG2 (BCRP) transporters among hESCs (blue bar) and hiPSCs (red bar). Five hESC lines (KhESC-1, KhESC-2, KhESC-3, KhESC-4, and KhESC-5 in a left-to-right bar) and three hiPSC lines (201B7, IMR90-1, and IMR90-4, in a left-to-right bar) were examined.

(B) Fold increases of mRNA of ABCB1 (MDR1), ABCC1 (MRP1), ABCC2 (MRP2), and ABCG2 (BCRP) transporters between hESCs (blue bar) and differentiated cells (red bar). Each bar shows an averaged value of the five hESC lines (KhESC-1, KhESC-2, KhESC-3, KhESC-4, and KhESC-5).

See also Figure S4.

We hypothesized that the selective staining of pluripotent stem cells by KP-1 is due to increased expression of ABCB1 and ABCG2 in differentiated cells, resulting in the selective export of KP-1. To investigate the role of ABCB1 and ABCG2 in the selectivity of KP-1, we established cell lines that stably express ABCB1 or ABCG2 (KB/ABCB1 and KB/ABCG2, respectively) from the KB3-1 line of human epidermoid carcinoma cells, which have undetectable expression levels of those transporters (Taguchi et al., 1997; Ueda et al., 1987). We treated the cells with KP-1 for 2 hr, captured their images using a fluorescence microscope (Figures 4A and 4B), and quantified the signals (Figures 4C and 4D). Parental KB3-1 cells were strongly stained by KP-1, whereas fluorescent signals were significantly lower or undetectable in KB/ABCB1 and KB/ABCG2 cells. KP-1 staining of KB/ABCB1 or KB/ABCG2 cells was restored by treatment with cyclosporine A or fumitremorgin C (Figures 4A–4D), which are known inhibitors of ABCB1 (Tamai and Safa, 1990) or ABCG2 (Allen et al., 2002), respectively. Similar experiments were conducted with ABCC1 (MRP1), a transporter whose expression is unchanged upon cell differentiation (Chen et al., 2001; Nagata et al., 2000). Overexpression of ABCC1 did not result in export of KP-1, whereas calcein AM, a known substrate of ABCC1 (Versantvoort et al., 1995), was eliminated (Figures S4A and S4B). These results collectively suggest that KP-1 is a selective substrate for both ABCB1 and ABCG2.

We next examined the effects of transporter inhibitors on the selectivity of KP-1 for hESCs. When differentiated cells derived from ESCs were treated with cyclosporine A or fumitremorgin C, the differentiated cells were labeled by KP-1 approximately 10× more strongly than those untreated with the inhibitors (Figures 4E and 4F). These results indicate that the selectivity of KP-1 depends on its efflux via ABCB1 and ABCG2, whose expression is repressed in human pluripotent cells and induced upon differentiation.

Selectivity Profiling of KP-1 with Human Somatic Cells

If induction levels of ABCB1 and ABCG2 expression depend on the direction and degree of differentiation from pluripotent stem cells, the usefulness of KP-1 might be limited. Previous studies have reported that either ABCG2 or ABCB1 is induced in early hematopoiesis (Tang et al., 2010; Uchida et al., 2004; Zhou et al., 2001); therefore, we examined KP-1 staining of hematopoietic cells derived from hESCs (Takayama et al., 2008, 2010) (Figure 5A). Fluorescence-activated cell sorting (FACS) analysis showed that KP-1 distinguishes between SSEA-4-positive hESCs and human early hematopoietic cells expressing CD45, CD235, CD41a, or CD43, suggesting that KP-1 is useful for monitoring early hematopoiesis.

We next examined the ability of KP-1 to monitor other clinically important differentiation processes: cardiomyogenesis and neurogenesis. KP-1 was capable of distinguishing between hiPSCs and hiPSC-derived cardiomyocytes (Figures S5A and S5B), as confirmed by flow cytometric analysis (Figure 5B). We used RT-PCR to examine the expression patterns of 44 human ABC transporters in cardiomyocytes derived from hiPSCs (Figure S4C). Surprisingly, neither ABCG2 nor ABCB1 was induced during cardiomyogenesis. Instead, three ABC transporters, ABCA1, ABCC5, and ABCD3, were induced during differentiation (Figure S4C). The ability of two cell surface membrane ABC transporters, ABCA1 and ABCC5, to cause efflux of KP-1 was examined by overexpressing each transporter in HEK293 cells. However, no clear efflux of KP-1 was observed from these cells (data not shown). It is possible that cardiomyocytes have other ABC transporter-independent mechanisms for excluding KP-1.

In contrast to human cardiomyocytes, hiPSC-derived neuronal stem cells (Morizane et al., 2011) were as strongly stained by KP-1 as hiPSCs (Figures S5C and S5D). The inability of KP-1 to distinguish between hiPSCs and human neuronal stem cells prompted us to examine staining patterns of KP-1 in a range of human primary cells (Figures 6A–6I). FACS analysis showed that KP-1 stained human brain astrocytes as strongly as hiPSCs, consistent with our observation that KP-1 labels human neuronal stem cells. In contrast, KP-1 exhibited weaker staining patterns in human lung cells, human adrenal microvascular cells, human prostate epithelial cells, human hepatocytes, human bronchial epithelial cells, and human brain microvascular cells. These results are consistent with expression profiles of ABC transporters in human tissues (Langmann et al., 2003): human tissues associated with secretion (adrenal gland), metabolic activity (liver), barrier systems (lung, bronchia), and reproductive organs (prostate) tend to display strong expression of ABC transporters. Overall, the results suggest that KP-1 is useful for monitoring a wide range of differentiation processes from human pluripotent stem cells, with the exception of neurogenesis.

We also tested staining patterns of KP-1 with several human cancer cell lines (Figures 6J–6L). KP-1 exhibited weaker staining in HepG2 cells (hepatocellular carcinoma) and human EC (1156QE) cells than in hiPSCs, whereas HeLa cells, a cervical cancer cell line that displays low ABC transporter expression (Ahlin et al., 2009), were labeled by KP-1 as strongly as hiPSCs. Thus, KP-1 might find its use in classifying cancer cells.

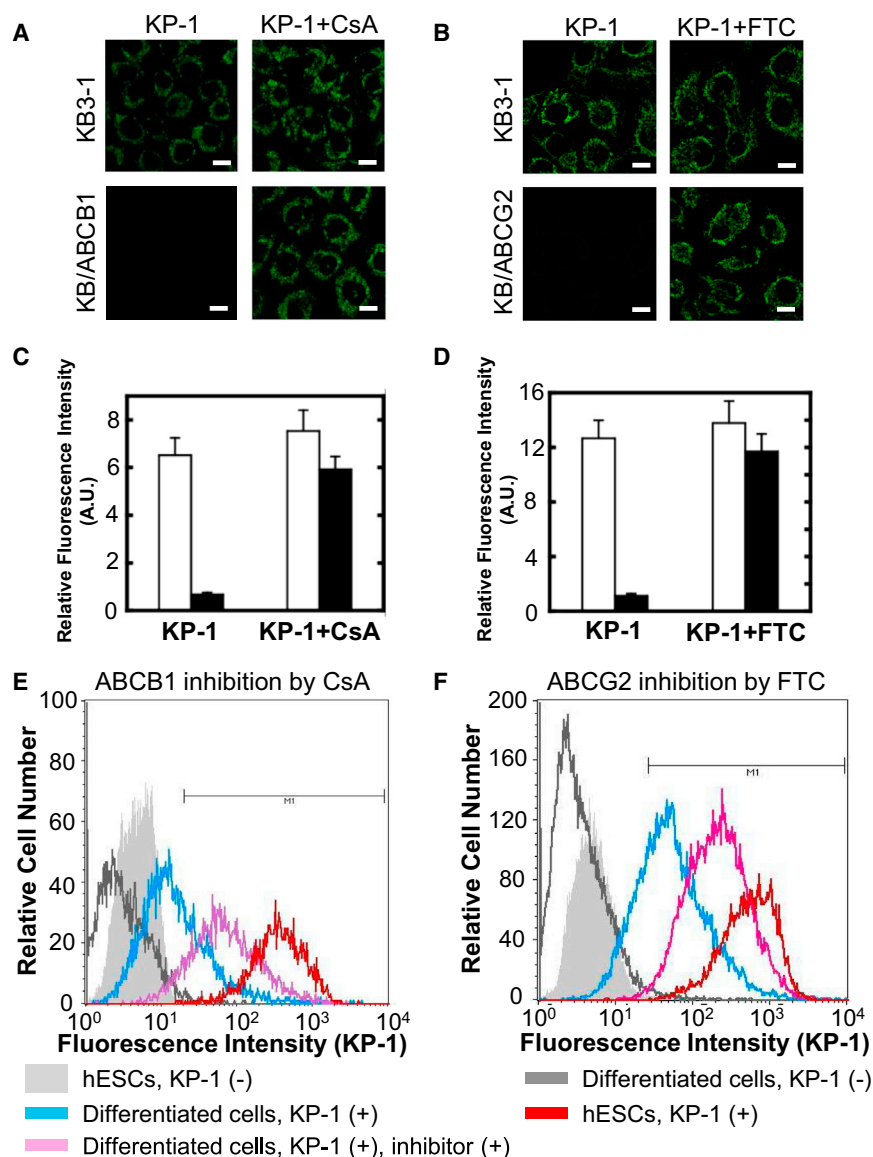


Figure 4. KP-1 Selectivity and ABC Transporters

(A) Fluorescence microscopic images of KB3-1 cells and KB/ABCB1 cells. The cells were treated with 1 μ M KP-1 for 2 hr (left panel) or with 1 μ M KP-1 for 2 hr in the presence of 5 μ M cyclosporine A (CsA; right panel). Scale bars represent 2 μ m.

(B) Fluorescence microscopic images of KB3-1 cells and KB/ABCG2 cells. The cells were treated with 1 μ M KP-1 for 2 hr (left panel) or with 1 μ M KP-1 for 2 hr in the presence of 10 μ M fumitremorgin C (FTC; right panel). Scale bars represent 2 μ m.

(C and D) Quantitative analysis of the fluorescence intensities of KP-1 in KB3-1 (open bar in C and D), KB/ABCB1 (solid bar in C), and KB/ABCG2 (solid bar in D) cells. It is evident that treatment with CsA or FTC restores the staining of KP-1.

(E and F) Fluorescence histograms from flow cytometric analysis of hESCs and ESC-derived differentiated cells in the presence of (E) 10 μ M CsA or (F) 10 μ M FTC. hESCs (red line) or differentiated cells (blue line) were incubated with 1 μ M KP-1 for 1 hr or with 1 μ M KP-1 and 10 μ M inhibitor (pink line) for 1 hr. CsA and FTC were used as ABCB1 and ABCG2 transporter inhibitors, respectively. Shaded histograms and gray line represent hESCs and differentiated cells without KP-1, respectively. See also Figure S4.

We isolated the 10% of cells most brightly stained by KP-1 and cultured them for another 3 weeks. Surprisingly, only a small portion (<0.1%) of the cells resulted in colonies of iPSCs after replating, and the reprogramming rates of the brightly stained cells were no higher than those of cells that were less strongly stained by KP-1.

During the course of the present study, the Yamanaka group independently obtained and published a similar result with an antibody against TRA-1-60, one of the most specific markers of human

pluripotent cells (Tanabe et al., 2013). By day 7, ~20% of the transduced cells were positive for TRA-1-60. However, only a small portion (~1%) of the reseeded TRA-1-60-positive cells resulted in the colonies of iPSCs on day 28, and many of those cells turned back to be negative for TRA-1-60 during subsequent culture. Detailed analysis showed that reprogramming of cells treated with the four reprogramming factors is initiated much more frequently than was previously anticipated and that maturation, rather than initiation, is the limiting step of the reprogramming process. Together with our results with KP-1, these observations suggest that pluripotent markers do not necessarily allow early detection of pluripotent stem cells during reprogramming.

DISCUSSION

Results of the present study raise several questions for further investigation. First, what is the role of repressed expression of

KP-1 Staining during Reprogramming

One potential application of KP-1 might be its use in early detection of reprogrammed cells during reprogramming. To examine this potential application, the cells brightly stained by KP-1 at an early stage of reprogramming were isolated and cultured to determine whether they did in fact correspond to fully reprogrammed iPSCs at later stages. Four reprogramming factors (*Sox2*, *Oct3/Oct4*, *Klf4*, and *L-Myc*) were virally transfected into human adrenal microvascular cells, which have broad, strong expression of ABC transporters (Langmann et al., 2003). On day 7, the cells were treated with 2 μ M KP-1 for 2 hr, then incubated overnight in fresh medium without KP-1. FACS analysis showed a significant increase in bright fluorescent cells among the transfected population (Figures S6A–S6D). The fluorescence intensity of the cells was greater than that of mock-transfected cells and as strong as in hiPSCs.

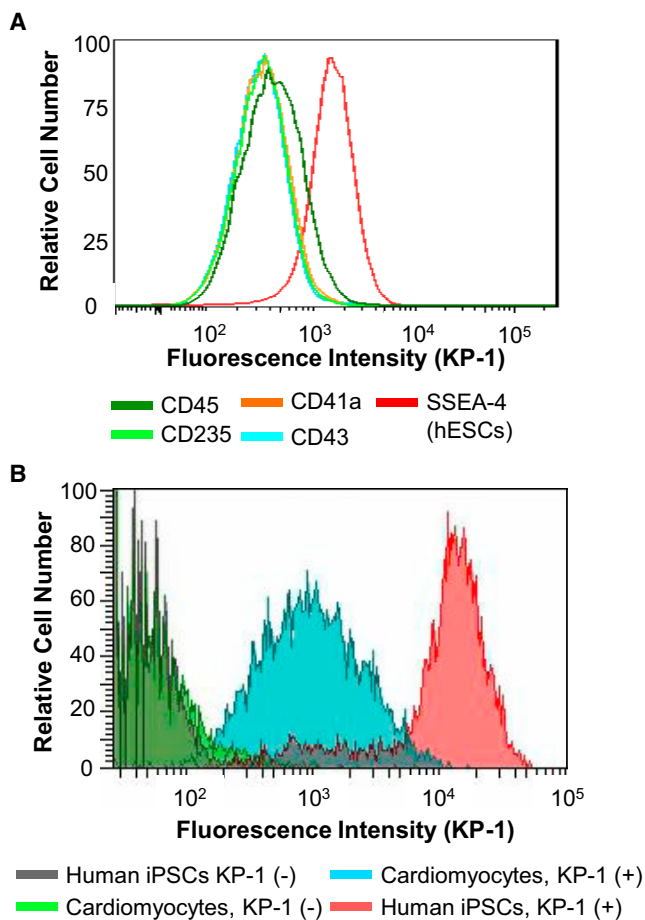


Figure 5. Selectivity Profiling of KP-1 with Hematopoietic Cells and Cardiomyocytes

(A) Flow cytometric analysis of KP-1 staining of hESCs and hematopoietic cells. hESCs and hematopoietic cells derived from hESCs were treated with 1 μ M KP-1 for 2 hr. After the removal of KP-1, differentiated cells or undifferentiated cells were incubated for an additional 24 hr. Expression of cell surface molecules (CD45, CD235, CD41a, CD43, and SSEA-4) was analyzed by flow cytometry.

(B) Fluorescence histograms from flow cytometric analysis of hiPSCs and cardiomyocytes. hiPSCs and cardiomyocytes derived from hiPSCs (IMR90-1) were treated with 1 μ M KP-1 for 1 hr. After the removal of KP-1, differentiated cells or undifferentiated cells were incubated for an additional 3 hr.

See also Figure S5.

ABCB1 and ABCG2 in pluripotent cells? Mixed results have previously been reported about the expression of ABCG2 in ESCs: Zeng et al. observed low expression levels of ABCG2 in human, but not mouse, ESCs (Zeng et al., 2009), and others detected high-level expression of ABCG2 in hESCs (Apáti et al., 2008). Our results support the model in which expression of ABCB1 and ABCG2 is repressed in hESCs and iPSCs. The finding that KP-1 stains neuronal lineages, as well as pluripotent stem cells, might provide insight. Both neuronal cells and pluripotent stem cells are usually protected by the blood-brain barrier or reproductive organs and, therefore, might not require extensive expression of ABC transporters. Reduced ABC transporter expression might make pluripotent stem cells and neuronal cells

more sensitive to endogenous bioactive small molecules, permitting highly sensitive spatial and temporal responses to environmental signals. It is also possible that ABCB1 and ABCG2 inhibit undifferentiated states of hESCs. Studies to address these issues are in progress.

Second, how specific is the absence of ABCB1 and ABCG2 as a marker for human pluripotent cells? The expression pattern of ABC transporters might be one of many properties of human pluripotent stem cells and might not be conserved in other organisms. Previous screening of a similar chemical library with mouse ESCs identified a molecule that was not hit during the current screening (Im et al., 2010), consistent with recent findings of properties that differ between human and mouse pluripotent stem cells (Schnerch et al., 2010). Substrate specificities and expression patterns of ABC transporters might differ between pluripotent stem cells of humans and other species.

Finally, what are other potential applications of KP-1, in addition to detection of persistent undifferentiated stem cells in cell samples prior to transplantation? Unfortunately, our results demonstrated that KP-1 is not suited for early detection of pluripotent cells during reprogramming. However, another potential application might be monitoring of pluripotency during maintenance of hESCs or iPSCs. Visualization of hESCs or iPSCs using this stable synthetic molecule is reversible and amenable to fine-tuning via concentration and incubation time. No cytotoxicity of KP-1 was evident in hiPSCs under our standard staining conditions (1 or 2 μ M for 2–7 hr), although cytotoxicity was detected after 48 hr of incubation at higher concentrations. The IC_{50} value at 48 hr was estimated to be 5.6 μ M (Figure S6E). Thus, prolonged incubation should be avoided when KP-1 is used at high concentrations. The staining patterns of KP-1 are time dependent, due to the involvement of ABC transporters, and 4 hr of incubation usually provided clear results.

The use of KP-1 might lead to the discovery of compounds that increase the activity of ABC transporters, either by inducing differentiation of stem cells into ABC-expressing progeny or by increasing the activity of ABC transporters in pluripotent stem cells. KP-1 might also serve as a screening tool or starting point for the discovery and design of cytotoxic drugs that are selective for human pluripotent stem cells. In theory, cytotoxic compounds with ABC transporter selectivity similar to that of KP-1 should eliminate pluripotent stem cells from a mixture of differentiated cells and undifferentiated cells.

Despite the unanswered questions, the discovery of KP-1 and elucidation of its mechanism of action constitute significant steps toward the goals of understanding the unusual characteristics of and developing a highly specific probe for human pluripotent stem cells. We plan to distribute this chemical probe to the research community for further evaluation and for use in basic studies and clinical applications.

EXPERIMENTAL PROCEDURES

Chemical Library Screening

The chemical libraries of fluorescent compounds are combinations of fluorescent chemicals found or designed in multiple laboratories (Ahn et al., 2007; Kawazoe et al., 2011). hiPSCs (clone #201B2) were plated on SNL feeder cells in 24-well plates. Five days after plating, each fluorescent compound was added at the final concentration of 4 μ M. After overnight

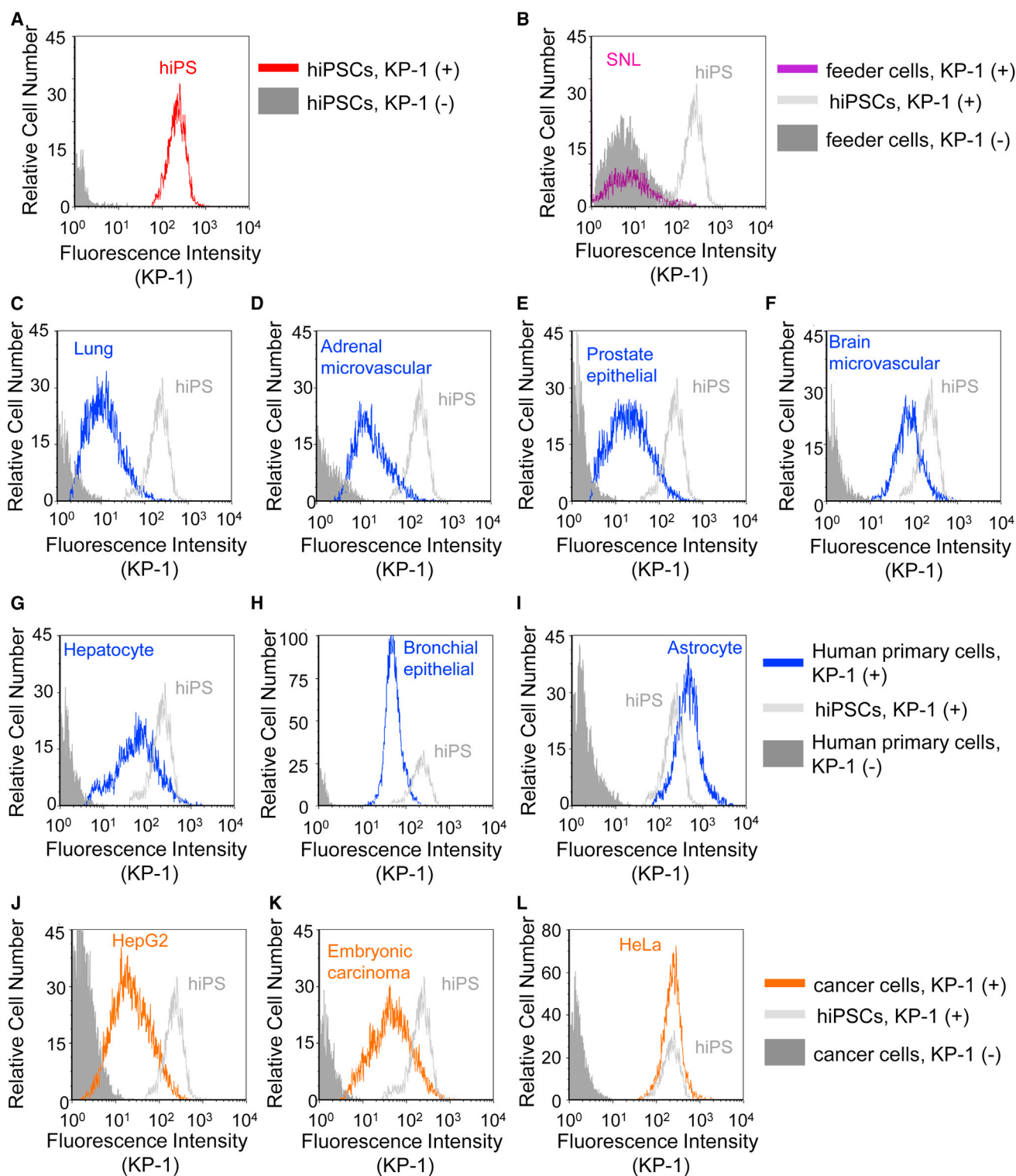


Figure 6. Staining Patterns of KP-1 with Human Somatic Cells

(A–L) Fluorescence histograms from flow cytometric analysis of (A) human stem cells, (B) feeder cells, (C–I) human primary cells, and (J–L) cancer cells. (A) hiPSCs, (B) mouse SNL cells, (C) human lung cells, (D) human adrenal microvascular endothelial cells, (E) human prostate epithelial cells, (F) human brain microvascular endothelial cells, (G) human hepatocyte cells, (H) human bronchial epithelial cells, and (I) human brain astrocyte cells are shown. (J) HepG2 cells, (K) human EC (1156QE) cells, and (L) HeLa cells are shown. The cells were treated with 2 μ M KP-1 at 37°C for 2 hr. After the removal of KP-1, cells were incubated at 37°C for an additional 5–7 hr. See also [Figure S6](#).

incubation, fluorescence microscopic images were captured using a Keyence Biorevo.

Characterization of KP-1

hiPSCs (clone #201B7) were plated at a density of 2×10^5 cells/well of a 6-well plate with mouse STO feeder cells. hiPSCs were also prepared under feeder-free conditions. Six days after plating, the cells were incubated with 2 μ M KP-1 for 3 hr, and fluorescence microscopic images were then captured. The cells were dissociated into single cells with Accutase (Invitrogen) and stained with α -SSEA-4-Alexa 647 for 30 min at room temperature. After washing, flow cytometric analysis was performed using a MoFlo Astrios (Beckman Coulter Genomics).

Fluorescence Microscopic Imaging of hiPSC Colonies

hiPSCs (clone #201B7) were plated on SNL feeder cells in 24- or 96-well plates. Five days after plating, donut-shaped colonies of iPSCs were obtained. Differentiation of the central parts of the colonies was confirmed by immunostaining with an SSEA-1 antibody. The cells were incubated with 4 μ M KP-1 for 4.5 hr at 37°C. Fluorescence microscopic images were taken using a Carl Zeiss Axioskop.

Fluorescence Microscopic Imaging and Flow Cytometric Analysis of hESCs and ESC-Derived Differentiated Cells

The hESC line, KhESC-1, was maintained as previously described (Suemori et al., 2006). To induce differentiation, hESCs were seeded onto a Matrigel-coated plate and cultured for 4 days with 500 nM all-trans-retinoic acid (Sigma-Aldrich; R2625) in Dulbecco's modified Eagle's medium (DMEM) supplemented with 10% (v/v) fetal bovine serum (FBS). After staining of hESCs or the differentiated cells with 1 μ M KP-1 for 2 hr, the cells were rinsed with PBS and examined using an Olympus IX71 fluorescence microscope with a DP72 camera. For flow cytometric analysis, the cells were washed twice with ice-cold PBS and dissociated with 0.25% trypsin-EDTA into a single cell suspension. Staining by KP-1 was quantified using a FACSCalibur flow cytometer (Becton Dickinson). For the experiments with transporter inhibitors, cyclosporin A or fumitremorgin C was added at the concentration of 10 μ M, during staining with KP-1.

Expression Profile of ABC Transporters

mRNA was extracted from five hESC lines (KhESC-1, KhESC-2, KhESC-3, KhESC-4, and KhESC-5) and three hiPSC lines (IMR90-1, IMR90-4, and 201B7). First-strand cDNAs were synthesized with reverse transcriptase (Applied Biosystems). Gene expression profiles were obtained by quantitative real-time RT-PCR, using TaqMan Array Gene Signature 96-well plates with 44 human ABC transporters (Applied Biosystems) and four housekeeping genes (GAPDH, 18S, HPRT1, and GUSB). Expression levels were normalized to GAPDH.

Experiments with KB3-1 Model Cells

The expression vector of myc-tagged ABCG2 in pCDH-EF1-MCS-IRES-Puro (System Biosciences) was introduced into 293T cells with psPAX2 and pMD2.G vector (Addgene). The lentivirus produced was used to infect KB3-1 cells, and a stable transformant, KB-ABCG2, was obtained by culturing the infected cells in medium containing puromycin (1 μ g/ml). KB3-1, KB/ABCB1 (Taguchi et al., 1997), KB/ABCG2, and KB/ABCC1 (Nagata et al., 2000) cells were maintained in DMEM supplemented with 10% FBS at 37°C in a humidified incubator (5% CO₂). The cells were subcultured for 24–48 hr in 35 mm glass base dishes (IWAKI), at a density of 4×10^5 cells per dish, in DMEM containing 10% (v/v) FBS. The cells were then incubated in DMEM containing 10% (v/v) FBS and KP-1 (1 μ M) or calcein AM (2 μ M) with or without an inhibitor (cyclosporine A: 5 μ M, Wako Pure Chemicals Industries; fumitremorgin C: 10 μ M, BioAustralis). After 2 hr incubation at 37°C, the treated cells were rinsed with PBS and observed in DMEM containing 10% (v/v) FBS using a confocal microscope (LSM 700; Carl Zeiss). For quantitative analysis, KB3-1 model cells were subcultured in poly-L-lysine-coated 96-well optical bottom plates (Nunc) for 24 hr, at a density of 2×10^4 cells per well, in DMEM containing 10% (v/v) FBS. The cells were then incubated for 1 hr in DMEM containing 10% (v/v) FBS and KP-1 (1 μ M) with or without fumitremorgin C (10 μ M). The

treated cells were rinsed with the medium and further incubated without KP-1 for 1 hr at 37°C. After washing with PBS, fluorescence intensity was measured in PBS using a microplate reader (Infinite F200; Tecan). The cells were also lysed with PBS containing 1% (w/v) Triton X-100, and protein amounts were measured with BCA Protein Assay Reagent (Thermo Scientific). Fluorescence intensity was normalized to the protein amounts. Experiments were carried out in octuplicate.

Selectivity Profiling of KP-1 with Hematopoietic Cells

hESC clone Kyoto hESC (KhESC)-3 was obtained from the Institute for Frontier Medical Sciences, Kyoto University (Kyoto), after approval for hESC use was granted by the Minister of Education, Culture, Sports, Science, and Technology of Japan (MEXT), and the review boards for ethics at the University of Tokyo. KhESC-3 was cultured on irradiated mouse embryonic fibroblasts in a 1:1 mixture of DMEM and Ham F-12 medium, supplemented with 0.1 mM nonessential amino acids (Invitrogen), 2 mM L-glutamine (Invitrogen), 20% (v/v) knockout serum replacement (Invitrogen), 0.1 mM 2-mercaptoethanol, and 5 ng/ml basic fibroblast growth factor (bFGF; Upstate). The cells were passaged every 3 days to maintain them in an undifferentiated state. The mouse C3H10T1/2 cell line was purchased from the RIKEN BioResource Center and cultured in Basal Medium Eagle (Invitrogen), containing 10% (v/v) FBS and 2 mM L-glutamine. ESC differentiation medium was Iscove-modified DMEM, supplemented with a cocktail of 10 μ g/ml human insulin, 5.5 μ g/ml human transferrin, 5 ng/ml sodium selenite, 2 mM L-glutamine, 0.45 mM α -monothio glycerol, 50 μ g/ml ascorbic acid, and 15% (v/v) highly filtered FBS (Celect Gold; ICN Biomedicals), in the absence or presence of the cytokines. Human vascular endothelial growth factor (VEGF) was purchased from R&D Systems. The following antibodies were used: phycoerythrin (PE) anti-human CD43 (eBioscience), Pacific Blue anti-human CD45, allophycocyanin (APC) anti-human CD41a, Pacific Blue anti-human CD235 (Glycophorin A) (BioLegend), and PE anti-human SSEA-4.

In order to differentiate hESCs into hematopoietic cells, small clumps of hESCs (<100 cells treated with PBS containing 0.25% trypsin [Invitrogen], 1 mM CaCl₂ [Sigma-Aldrich], and 20% (v/v) knockout serum replacement [Invitrogen]) were transferred onto mitomycin-treated or irradiated C3H10T1/2 cells, and cocultured in hematopoietic cell differentiation medium with VEGF (20 ng/ml), which was replaced every 3 days. On day 12 after starting differentiation, KP-1 was added to the culture medium (final concentration, 1 μ M). The cells were incubated for 2 hr, then washed twice with PBS, and changed to ESC differentiation medium. Undifferentiated KhESC-3 was used as positive control, and all cells were treated with KP-1. Differentiated cells or undifferentiated cells were collected after 0, 6, and 24 hr, using treatment with 0.25% trypsin-EDTA (Invitrogen). Expression of cell surface molecules and KP-1 fluorescence were analyzed by flow cytometry (FACSAria II; Becton Dickinson).

KP-1 Staining of Cardiomyocytes

Cardiac differentiation was carried out as previously described with modifications (Minami et al., 2012; Wang et al., 2011). In brief, hiPSCs were cultured on 3.5 cm culture dishes coated with human laminin 211 (BioLamina). To enhance generation of cardiac colonies, WNT signaling inhibitors were added for days 3–9 of cardiac differentiation. Cardiac colonies were harvested on day 15 and cultured for 7–10 days in floating culture. A majority of the prepared cells expressed the cardiac markers: cardiac troponin T, α -actinin, and NKX2.5. hiPSCs or iPSC-derived cardiomyocytes were treated with 1 μ M KP-1 for 2 hr. The treated cells were rinsed with the medium and further incubated without KP-1 for 3 hr at 37°C. Fluorescent images were captured using an Olympus IX71 with a DP72 camera. For flow cytometric analysis, hiPSCs and iPSC-derived cardiomyocytes were dissociated into single cells by treatment with trypsin for 10 min. Flow cytometric analysis was performed with a FACSCalibur flow cytometer.

Flow Cytometric Analysis of Human Stem Cells, Feeder Cells, Human Primary Cells, and Cancer Cells

Human lung cells, human prostate epithelial cells, human brain microvascular endothelial cells, human hepatocyte cells, human bronchial epithelial cells, human brain astrocyte cells, and human EC (1156QE) cells were purchased from DS Pharma Biomedical. Human adrenal microvascular endothelial cells were

purchased from Primary Cell. Human lung cells were cultured in RPMI 1640 medium (Gibco) supplemented with 2 mM L-glutamine (Gibco) and 25 mM HEPES (Gibco). Human prostate epithelial cells, human brain microvascular endothelial cells, human hepatocyte cells, and human brain astrocyte cells were cultured on plates treated with attachment factor (Cell Systems) in CSC complete recombinant medium (Cell Systems) supplemented with 2% (v/v) human recombinant growth factor (Cell Systems). Human bronchial epithelial cells were cultured in BEBM medium (Lonza) supplemented with 0.4% (v/v) bovine pituitary extract (Lonza), 0.1% (v/v) human epithelial growth factor (Lonza), 0.1% (v/v) hydrocortisone (Lonza), 0.1% (v/v) epinephrine (Lonza), 0.1% (v/v) transferrin (Lonza), 0.1% (v/v) insulin (Lonza), 0.1% (v/v) retinoic acid (Lonza), 0.1% (v/v) triiodothyronine (Lonza), and 0.1% (v/v) GA-1000 (gentamicin, amphotericin-B; Lonza). Human EC (1156QE) cells were cultured in DMEM without sodium pyruvate (Nacalai) supplemented with 10% (v/v) FBS. Human adrenal microvascular cells were cultured in mesenchymal stem cell medium (ScienCell) supplemented with 5% (v/v) FBS (ScienCell), 1% (v/v) mesenchymal stem cell growth factor (ScienCell), and 1% (v/v) penicillin/streptomycin (ScienCell). The cells were subcultured in 6-well plates (Falcon) at a density of 1×10^5 to 5×10^5 cells per well. The cells were treated with 2 μ M KP-1 at 37°C for 2 hr. After the removal of KP-1, cells were incubated in fresh medium at 37°C for an additional 5–7 hr. For flow cytometric analysis, the cells were washed with PBS and dissociated with 0.25% trypsin-EDTA into a single cell suspension. Staining by KP-1 was quantified using a FACSAria II flow cytometer.

SUPPLEMENTAL INFORMATION

Supplemental Information includes Supplemental Experimental Procedures and six figures and can be found with this article online at <http://dx.doi.org/10.1016/j.celrep.2014.02.006>.

AUTHOR CONTRIBUTIONS

N.H., A.M., M.N., N.N., K.U., and M.U. conceived the project. N.H. and M.U. wrote the manuscript and analyzed the data with the support of M.N., N.N., and K.U. A.M. performed initial screening of a chemical library, and M.N. conducted the validation of KP-1 with hiPSCs and examined the effects of KP-1 during reprogramming. N.H. conducted chemical synthesis, mechanistic analysis of KP-1, validation with human somatic cells, and flow cytometric analyses. Y.F. performed profiling of ABC transporter expression and experiments with ABC transporter model cells. K.Y. carried out validation experiments with hESCs.

ACKNOWLEDGMENTS

This work was supported in part by MEXT Leading Project, JSPS (LR018, 20228001, 23710254, 25221203, and 21591079), the Bio-Oriented Technology Research Advancement Institution of Japan (BRAIN), JST (CREST), and JSPS Asian CORE Program Asian Chemical Biology Initiative. The M.U. research group participates in the Global COE program Integrated Materials Science (#B-09). iCeMS is supported by World Premier International Research Center Initiative (WPI), MEXT, Japan. The upgrade of the confocal microscope was supported by NEDO and Yokogawa Electric. S.Y. is a member without salary of the scientific advisory boards of iPierian, iPS Academia Japan, Megakaryon Corporation, and HEALIOS K.K. Japan. H.N. is a founder, shareholder, and scientific advisory board member of ReproCELL and Megakaryon. N.N. is a founder and shareholder of ReproCELL.

Received: February 7, 2012

Revised: January 14, 2014

Accepted: February 4, 2014

Published: March 6, 2014

REFERENCES

Ahlin, G., Hilgendorf, C., Karlsson, J., Szigartyo, C.A., Uhlén, M., and Artursson, P. (2009). Endogenous gene and protein expression of drug-transporting

proteins in cell lines routinely used in drug discovery programs. *Drug Metab. Dispos.* 37, 2275–2283.

Ahn, Y.H., Lee, J.S., and Chang, Y.T. (2007). Combinatorial rosamine library and application to in vivo glutathione probe. *J. Am. Chem. Soc.* 129, 4510–4511.

Allen, J.D., van Loevezijn, A., Lakhai, J.M., van der Valk, M., van Tellingen, O., Reid, G., Schellens, J.H.M., Koomen, G.J., and Schinkel, A.H. (2002). Potent and specific inhibition of the breast cancer resistance protein multidrug transporter in vitro and in mouse intestine by a novel analogue of fumitremorgin C. *Mol. Cancer Ther.* 1, 417–425.

Apáti, A., Orbán, T.I., Varga, N., Németh, A., Schamberger, A., Krizsik, V., Erdélyi-Belle, B., Homolya, L., Várady, G., Padányi, R., et al. (2008). High level functional expression of the ABCG2 multidrug transporter in undifferentiated human embryonic stem cells. *Biochim. Biophys. Acta* 1778, 2700–2709.

Ben-Shushan, E., Sharir, H., Pikarsky, E., and Bergman, Y. (1995). A dynamic balance between ARP-1/COUP-TFII, EAR-3/COUP-TFI, and retinoic acid receptor:retinoid X receptor heterodimers regulates Oct-3/4 expression in embryonal carcinoma cells. *Mol. Cell. Biol.* 15, 1034–1048.

Bernardo, A.S., Faial, T., Gardner, L., Niakan, K.K., Ortmann, D., Senner, C.E., Callery, E.M., Trotter, M.W., Hemberger, M., Smith, J.C., et al. (2011). BRACHYURY and CDX2 mediate BMP-induced differentiation of human and mouse pluripotent stem cells into embryonic and extraembryonic lineages. *Cell Stem Cell* 9, 144–155.

Bortell, R., van Wijnen, A.J., Ramsey-Ewing, A.L., Stein, G.S., and Stein, J.L. (1992). Differential regulation of H4 histone gene expression in 3T3-L1 preadipocytes during arrest of proliferation following contact inhibition or differentiation and its modulation by TGF beta 1. *J. Cell. Biochem.* 50, 62–72.

Chambers, I., Colby, D., Robertson, M., Nichols, J., Lee, S., Tweedie, S., and Smith, A. (2003). Functional expression cloning of Nanog, a pluripotency sustaining factor in embryonic stem cells. *Cell* 113, 643–655.

Chen, Z.S., Aoki, S., Komatsu, M., Ueda, K., Sumizawa, T., Furukawa, T., Okumura, H., Ren, X.Q., Belinsky, M.G., Lee, K., et al. (2001). Reversal of drug resistance mediated by multidrug resistance protein (MRP) by dual effects of agosterol A on MRP1 function. *Int. J. Cancer* 93, 107–113.

Green, H., and Meuth, M. (1974). An established pre-adipose cell line and its differentiation in culture. *Cell* 3, 127–133.

Greenfield, N.J., and Pietruszko, R. (1977). Two aldehyde dehydrogenases from human liver. Isolation via affinity chromatography and characterization of the isozymes. *Biochim. Biophys. Acta* 483, 35–45.

Henderson, J.K., Draper, J.S., Baillie, H.S., Fishel, S., Thomson, J.A., Moore, H., and Andrews, P.W. (2002). Preimplantation human embryos and embryonic stem cells show comparable expression of stage-specific embryonic antigens. *Stem Cells* 20, 329–337.

Heytler, P.G. (1963). Uncoupling of oxidative phosphorylation by carbonyl cyanide phenylhydrazones 0.1. Some characteristics of M-Cl-Ccp action on mitochondria and chloroplasts. *Biochemistry* 2, 357–361.

Im, C.N., Kang, N.Y., Ha, H.H., Bi, X.Z., Lee, J.J., Park, S.J., Lee, S.Y., Vendrell, M., Kim, Y.K., Lee, J.S., et al. (2010). A fluorescent rosamine compound selectively stains pluripotent stem cells. *Angew. Chem. Int. Ed. Engl.* 49, 7497–7500.

Kasianowicz, J., Benz, R., and McLaughlin, S. (1984). The kinetic mechanism by which CCCP (carbonyl cyanide m-chlorophenylhydrazone) transports protons across membranes. *J. Membr. Biol.* 82, 179–190.

Kawazoe, Y., Shimogawa, H., Sato, A., and Uesugi, M. (2011). A mitochondrial surface-specific fluorescent probe activated by bioconversion. *Angew. Chem. Int. Ed. Engl.* 50, 5478–5481.

Kim, Y.K., Lee, J.S., Bi, X.Z., Ha, H.H., Ng, S.H., Ahn, Y.H., Lee, J.J., Wagner, B.K., Clemons, P.A., and Chang, Y.T. (2011). The binding of fluorophores to proteins depends on the cellular environment. *Angew. Chem. Int. Ed. Engl.* 50, 2761–2763.

Langmann, T., Mauere, R., Zahn, A., Moehle, C., Probst, M., Stremmel, W., and Schmitz, G. (2003). Real-time reverse transcription-PCR expression profiling of the complete human ATP-binding cassette transporter superfamily in various tissues. *Clin. Chem.* 49, 230–238.

- Mann, M., Hendrickson, R.C., and Pandey, A. (2001). Analysis of proteins and proteomes by mass spectrometry. *Annu. Rev. Biochem.* 70, 437–473.
- Minami, I., Yamada, K., Otsuji, T.G., Yamamoto, T., Shen, Y., Otsuka, S., Kadota, S., Morone, N., Barve, M., Asai, Y., et al. (2012). A small molecule that promotes cardiac differentiation of human pluripotent stem cells under defined, cytokine- and xeno-free conditions. *Cell Rep.* 2, 1448–1460.
- Minamikawa, T., Sriratana, A., Williams, D.A., Bowser, D.N., Hill, J.S., and Nagley, P. (1999). Chloromethyl-X-rosamine (MitoTracker Red) photosensitises mitochondria and induces apoptosis in intact human cells. *J. Cell Sci.* 112, 2419–2430.
- Mitsui, K., Tokuzawa, Y., Itoh, H., Segawa, K., Murakami, M., Takahashi, K., Maruyama, M., Maeda, M., and Yamanaka, S. (2003). The homeoprotein Nanog is required for maintenance of pluripotency in mouse epiblast and ES cells. *Cell* 113, 631–642.
- Moitra, K., and Dean, M. (2011). Evolution of ABC transporters by gene duplication and their role in human disease. *Biol. Chem.* 392, 29–37.
- Morizane, A., Doi, D., Kikuchi, T., Nishimura, K., and Takahashi, J. (2011). Small-molecule inhibitors of bone morphogenic protein and activin/nodal signals promote highly efficient neural induction from human pluripotent stem cells. *J. Neurosci. Res.* 89, 117–126.
- Nagata, K., Nishitani, M., Matsuo, M., Kioka, N., Amachi, T., and Ueda, K. (2000). Nonequivalent nucleotide trapping in the two nucleotide binding folds of the human multidrug resistance protein MRP1. *J. Biol. Chem.* 275, 17626–17630.
- Niwa, H., Miyazaki, J., and Smith, A.G. (2000). Quantitative expression of Oct-3/4 defines differentiation, dedifferentiation or self-renewal of ES cells. *Nat. Genet.* 24, 372–376.
- Niwa, H., Toyooka, Y., Shimosato, D., Strumpf, D., Takahashi, K., Yagi, R., and Rossant, J. (2005). Interaction between Oct3/4 and Cdx2 determines trophectoderm differentiation. *Cell* 123, 917–929.
- Pesce, M., and Schöler, H.R. (2001). Oct-4: gatekeeper in the beginnings of mammalian development. *Stem Cells* 19, 271–278.
- Rosner, M.H., Vignano, M.A., Ozato, K., Timmons, P.M., Poirier, F., Rigby, P.W.J., and Staudt, L.M. (1990). A POU-domain transcription factor in early stem cells and germ cells of the mammalian embryo. *Nature* 345, 686–692.
- Schnerch, A., Cerdan, C., and Bhatia, M. (2010). Distinguishing between mouse and human pluripotent stem cell regulation: the best laid plans of mice and men. *Stem Cells* 28, 419–430.
- Shablott, M.J., Axelman, J., Wang, S.P., Bugg, E.M., Littlefield, J.W., Donovan, P.J., Blumenthal, P.D., Huggins, G.R., and Gearhart, J.D. (1998). Derivation of pluripotent stem cells from cultured human primordial germ cells. *Proc. Natl. Acad. Sci. USA* 95, 13726–13731.
- Suemori, H., Yasuchika, K., Hasegawa, K., Fujioka, T., Tsuneyoshi, N., and Nakatsuji, N. (2006). Efficient establishment of human embryonic stem cell lines and long-term maintenance with stable karyotype by enzymatic bulk passage. *Biochem. Biophys. Res. Commun.* 345, 926–932.
- Svensson, R., Grenö, C., Johansson, A.S., Mannervik, B., and Morgenstern, R. (2002). Synthesis and characterization of 6-chloroacetyl-2-dimethylaminonaphthalene as a fluorogenic substrate and a mechanistic probe for glutathione transferases. *Anal. Biochem.* 311, 171–178.
- Taguchi, Y., Kino, K., Morishima, M., Komano, T., Kane, S.E., and Ueda, K. (1997). Alteration of substrate specificity by mutations at the His(61) position in predicted transmembrane domain 1 of human MDR1/P-glycoprotein. *Biochemistry* 36, 8883–8889.
- Takahashi, K., Tanabe, K., Ohnuki, M., Narita, M., Ichisaka, T., Tomoda, K., and Yamanaka, S. (2007). Induction of pluripotent stem cells from adult human fibroblasts by defined factors. *Cell* 131, 861–872.
- Takayama, N., Nishikii, H., Usui, J., Tsukui, H., Sawaguchi, A., Hiroshima, T., Eto, K., and Nakauchi, H. (2008). Generation of functional platelets from human embryonic stem cells in vitro via ES-sacs, VEGF-promoted structures that concentrate hematopoietic progenitors. *Blood* 111, 5298–5306.
- Takayama, N., Nishimura, S., Nakamura, S., Shimizu, T., Ohnishi, R., Endo, H., Yamaguchi, T., Otsu, M., Nishimura, K., Nakanishi, M., et al. (2010). Transient activation of c-MYC expression is critical for efficient platelet generation from human induced pluripotent stem cells. *J. Exp. Med.* 207, 2817–2830.
- Tamai, I., and Safa, A.R. (1990). Competitive interaction of cyclosporins with the Vinca alkaloid-binding site of P-glycoprotein in multidrug-resistant cells. *J. Biol. Chem.* 265, 16509–16513.
- Tanabe, K., Nakamura, M., Narita, M., Takahashi, K., and Yamanaka, S. (2013). Maturation, not initiation, is the major roadblock during reprogramming toward pluripotency from human fibroblasts. *Proc. Natl. Acad. Sci. USA* 110, 12172–12179.
- Tang, L., Bergevoet, S.M., Gilissen, C., de Witte, T., Jansen, J.H., van der Reijden, B.A., and Raymakers, R.A. (2010). Hematopoietic stem cells exhibit a specific ABC transporter gene expression profile clearly distinct from other stem cells. *BMC Pharmacol.* 10, 12.
- Tang, C., Lee, A.S., Volkmer, J.P., Sahoo, D., Nag, D., Mosley, A.R., Inlay, M.A., Ardehali, R., Chavez, S.L., Pera, R.R., et al. (2011). An antibody against SSEA-5 glycan on human pluripotent stem cells enables removal of teratoma-forming cells. *Nat. Biotechnol.* 29, 829–834.
- Thomson, J.A., Kalishman, J., Golos, T.G., Durning, M., Harris, C.P., Becker, R.A., and Hearn, J.P. (1995). Isolation of a primate embryonic stem cell line. *Proc. Natl. Acad. Sci. USA* 92, 7844–7848.
- Thomson, J.A., Itskovitz-Eldor, J., Shapiro, S.S., Waknitz, M.A., Swiergiel, J.J., Marshall, V.S., and Jones, J.M. (1998). Embryonic stem cell lines derived from human blastocysts. *Science* 282, 1145–1147.
- Uchida, N., Dykstra, B., Lyons, K., Leung, F., Kristiansen, M., and Eaves, C. (2004). ABC transporter activities of murine hematopoietic stem cells vary according to their developmental and activation status. *Blood* 103, 4487–4495.
- Ueda, K. (2011). ABC proteins protect the human body and maintain optimal health. *Biosci. Biotechnol. Biochem.* 75, 401–409.
- Ueda, K., Cardarelli, C., Gottesman, M.M., and Pastan, I. (1987). Expression of a full-length cDNA for the human “MDR1” gene confers resistance to colchicine, doxorubicin, and vinblastine. *Proc. Natl. Acad. Sci. USA* 84, 3004–3008.
- Versantvoort, C.H.M., Bagrij, T., Wright, K.A., and Twentyman, P.R. (1995). On the relationship between the probenecid-sensitive transport of daunorubicin or calcein and the glutathione status of cells overexpressing the multidrug resistance-associated protein (MRP). *Int. J. Cancer* 63, 855–862.
- Wang, H.M., Hao, J.J., and Hong, C.C. (2011). Cardiac induction of embryonic stem cells by a small molecule inhibitor of Wnt/ β -catenin signaling. *ACS Chem. Biol.* 6, 192–197.
- Young, J., and Holland, I.B. (1999). ABC transporters: bacterial exporters-revisited five years on. *Biochim. Biophys. Acta* 1461, 177–200.
- Zeng, H., Park, J.W., Guo, M., Lin, G., Crandall, L., Compton, T., Wang, X.F., Li, X.J., Chen, F.P., and Xu, R.H. (2009). Lack of ABCG2 expression and side population properties in human pluripotent stem cells. *Stem Cells* 27, 2435–2445.
- Zhou, S., Schuetz, J.D., Bunting, K.D., Colapietro, A.M., Sampath, J., Morris, J.J., Lagutina, I., Grosveld, G.C., Osawa, M., Nakauchi, H., and Sorrentino, B.P. (2001). The ABC transporter Bcrp1/ABCG2 is expressed in a wide variety of stem cells and is a molecular determinant of the side-population phenotype. *Nat. Med.* 7, 1028–1034.