

Available online at www.sciencedirect.com
 ScienceDirect

Developmental Biology 303 (2007) 405–420

DEVELOPMENTAL
BIOLOGYwww.elsevier.com/locate/ydbio

Review

How pollen tubes grow

Alexander Krichevsky^{a,*}, Stanislav V. Kozlovsky^a, Guo-Wei Tian^b, Min-Huei Chen^a,
Adi Zaltsman^a, Vitaly Citovsky^a

^a Department of Biochemistry and Cell Biology, State University of New York, Stony Brook, NY 11794-5215, USA^b Multi-Photon Imaging Facility, State University of New York, Stony Brook, NY 11794-5200, USA

Received for publication 5 August 2006; revised 16 November 2006; accepted 2 December 2006

Available online 8 December 2006

Abstract

Sexual reproduction of flowering plants depends on delivery of the sperm to the egg, which occurs through a long, polarized projection of a pollen cell, called the pollen tube. The pollen tube grows exclusively at its tip, and this growth is distinguished by very fast rates and reaches extended lengths. Thus, one of the most fascinating aspects of pollen biology is the question of how enough cell wall material is produced to accommodate such rapid extension of pollen tube, and how the cell wall deposition and structure are regulated to allow for rapid changes in the direction of growth. This review discusses recent advances in our understanding of the mechanism of pollen tube growth, focusing on such basic cellular processes as control of cell shape and growth by a network of cell wall-modifying enzymes, molecular motor-mediated vesicular transport, and intracellular signaling by localized gradients of second messengers.

© 2006 Elsevier Inc. All rights reserved.

Keywords: Pollen tube growth; Pectin methylesterases; Molecular motors; Rab and Rop/Rac GTPases

Introduction: pollen and pollen tube

Sexual reproduction of flowering plants requires delivery of the sperm to the egg. The process begins with deposition of the pollen grain, containing the male gametes and delivered by an insect, wind or other means, on the female stigmatic tissue. If the pollen–stigma interaction is compatible, the pollen grain hydrates and germinates shortly following landing on the stigma. During germination, a defined area in the pollen plasma membrane – the tip growth domain to which post-Golgi vesicles are targeted and fused, promoting directional growth – is established, and the pollen tube elongation begins, often reaching astounding rates of growth. For example, the maize pollen tube can grow as fast as 1 cm/h and extend to about 1 ft in length within 24 h (Barnabas and Fridvalszky, 1984).

During the elongation process, the pollen cytoplasm, vegetative nucleus and sperm cells are transported within the tube, which grows through intercellular spaces in the pistil. To serve as a conduit through which the fertilizing sperm cells can

travel, the tube plots its course through the transmitting tissues, eventually reaching the eggs within the ovary (Johnson and Preuss, 2002; Kim et al., 2003; Palanivelu and Preuss, 2000; Ray et al., 1997). Molecular cues, such as the transmitting tissue-specific (TTS) protein in tobacco (*Nicotiana tabacum*) (Cheung et al., 1995) or gamma-aminobutyric acid (GABA) in *Arabidopsis* (Palanivelu et al., 2003), are located within the pistil tissues and guide the tube to deliver the sperm cells to the embryo sac for fertilization (Cheung et al., 1995; Johnson and Preuss, 2002; Lord and Russell, 2002). Additionally, the female tissues provide pollen tube-attracting signals as has been shown using mutants with delayed development of the embryo sac, that fail to attract nascent pollen tubes (Shimizu and Okada, 2000).

Over decade ago, two major biochemical mechanisms driving the pollen tube elongation were discovered: a steep calcium gradient within the pollen tube tip and the contribution of actin microfilaments to the elongation process. Pollen tubes exhibit a sharp, tip-focused intracellular calcium gradient that drives and orients their apical growth. While plant cells generally maintain a cytosolic calcium concentration of approximately 100 nM, during pollen tube growth a much higher concentration of several micromolar calcium is

* Corresponding author. Fax: +631 632 8575.

E-mail address: akrichevsky@notes.cc.sunysb.edu (A. Krichevsky).

found in the apical few micrometers of the growing tip (see Holdaway-Clarke and Hepler, 2003 for review; Malhó et al., 1994). Apical calcium concentration in the nascent lily (*Lilium longiflorum*) pollen tubes, for instance, is estimated at 3–5 μM , while the rest of the tube retains the normal cellular calcium levels (~ 100 nM). Interestingly, this steep apical gradient returns to the basal cellular level within ~ 20 μm from the tip apex (Miller et al., 1992; Obermeyer and Weisenseel, 1991; Pierson et al., 1994; Rathore et al., 1991). Several studies have shown, that calcium gradient dissipation by various methods, including BAPTA buffer injections, mild thermal shock, calcium channels blockers and others, lead to the inhibition of the pollen tube growth (Li et al., 1996; Pierson et al., 1994; Rathore et al., 1991). Also, artificial generation of a focused elevated internal calcium level through localized photolysis of caged calcium has altered tip growth directionality, again supporting the notion of the necessity of the calcium gradient for the pollen tube growth (Malhó and Trewavas, 1996). The gradient high-point is in the immediate vicinity of the tip apex, and it appears to be derived, at least to some extent, from the influx of extracellular calcium through stretch-responsive channels activated by deformations in the nascent tip wall (Holdaway-Clarke et al., 1997; Pierson et al., 1994, 1996). However, although calcium-permeable channels are likely to contribute to the gradient formation and control, the specific molecular mechanisms of this process remain largely unknown (Dutta and Robinson, 2004).

Actin is essential for the polarized tip growth (Geitmana et al., 2000; Vidali and Hepler, 2001; Vidali et al., 2001). Together with myosin motors, actin microfilaments support vesicular transport and other crucial processes critical for the tube growth, since inhibition of actin polymerization by drugs, such as latrunculin B and cytochalasin B, effectively blocks pollen tube elongation (Gibbon et al., 1999; Miller et al., 1999). Although the abundance of the longitudinal actin filaments within the pollen tube is beyond doubt, it remains unclear which specific form(s) or population(s) of the F-actin are directly involved in the tip growth.

The role of microtubules in pollen tube growth, on the other hand, has been quite puzzling, since in two species of the *Nicotiana* family, tobacco and *Nicotiana glauca*, and in *Endymion nonscriptus*, pharmacological disruption of microtubules by oryzalin or colchicine had no effect on pollen tube elongation (Åström et al., 1995; Heslop-Harrison et al., 1988; Laitinen et al., 2002). Conversely, in Norway spruce (*Picea abies*), oryzalin or colchicine treatments partially blocked pollen germination and growth, generating swollen tips and shorter tubes (Anderhag et al., 2000). Also, microtubule inhibitors colchicine and prophan inhibited pollen tube growth in another *Nicotiana* species, *Nicotiana sylvestris* (Joos et al., 1994).

The functions of the actin microfilaments and their myosin motors and the roles of ionic gradients, mainly that of calcium, in the pollen tube growth, the mechanisms of the pollen chemotaxis to the ovule, and the identity and action of pistil-guiding signals have been the subjects of numerous

excellent reviews (Bedinger, 1992; Feijo et al., 2001; Hepler et al., 2001; Higashiyama et al., 2003; Johnson and Preuss, 2002; Mascarenhas, 1993; McCormick and Yang, 2005; Palanivelu and Preuss, 2000; Taylor and Hepler, 1997). Conversely, less attention was paid to recent significant advances in our understanding of the roles of (i) the cell wall-modifying enzymes pectin methylesterases (PMEs) and cellulose synthases, (ii) small GTPases involved in the regulation of traffic of membrane vesicles and dynamics of actin microfilaments, (iii) microtubule-associated molecular motors dyneins and kinesins, and (iv) second messengers, such as the calcium/phospholipid system and cAMP. This review discusses our up-to-date knowledge of these aspects of the pollen tube growth.

Cell wall-modifying enzymes: PMEs and cellulose synthases

Pectin methylesterases (PMEs)

In most plant species, the pollen tube cell wall consists of two layers, the inner sheath of callose and outer coating containing mainly pectin with cellulose and hemicellulose. The pollen tube grows exclusively at its tip, where the newly synthesized cell wall is continually forming (Taylor and Hepler, 1997). A single pectin layer, lacking callose or cellulose, forms the tip cell wall (Ferguson et al., 1998) and provides this area with sufficient rigor to maintain the cellular integrity, on the one hand, and with plasticity to allow directional tube growth, on the other (Steer and Steer, 1989).

During the tube elongation process, pectins are polymerized, as well as methyl esterified and modified with side chains within the Golgi apparatus, and transported in the Golgi-derived vesicles to the pollen tip (Li et al., 1995; Staehelin and Moore, 1995; Sterling et al., 2001). Following vesicle discharge, homogalacturonan – a linear polymer composed of 1,4- α -D-galacturonic acid residues, which represent the major component of pectin – is gradually deesterified by pectin methylesterases (PMEs). The deesterification of the polygalacturonic acid chain converts the methoxyl groups into carboxyl groups, exposing the acidic residues which then are cross-linked by calcium ions, creating a new layer of pectin (Catoire et al., 1998). The key role of PMEs during cell wall formation requires tight regulation of this enzymatic activity, which is achieved most likely through the properties of the surrounding medium, with pH being one of the key parameters. Specifically, the localized reduction in pH, due to the deesterification process, may promote cell wall relaxation by stimulating the activity of several cell wall-loosening hydrolases, such as polygalacturonases and pectate lyases (Ren and Kermode, 2000; Wen et al., 1999). The interplay between these opposing effects – cell wall stiffening by the PME action and cross-linking by calcium versus cell wall loosening by different hydrolases – likely regulates the directional growth of the pollen tube tip (Bordenave, 1996; Catoire et al., 1998; Moustacac et al., 1991).

PMEs represent a large family of plant enzymes originally discovered and characterized in the kiwi fruit (Balestrieri et al., 1990; Camardella et al., 2000; Giovane et al., 1995). For

example, the *Arabidopsis* genome encodes over 60 proteins containing the PME catalytic domain, which is frequently accompanied by one or more PME inhibitor domains (PMEI) on the same polypeptide chain (Markovic and Jornvall, 1992; Tian et al., 2006). The PMEI domain, also known as the PME pro-region, is thought to regulate the enzymatic activity by intramolecular inhibition the PME catalytic domain; interestingly, the pro-region is also involved in the cell wall targeting of PME but it does not act, as previously proposed, as a chaperone for the PME folding (Micheli, 2001). In addition, virtually all PMEs contain a pre-region that includes the signal peptide, which mediates protein targeting to the endoplasmic reticulum (ER) for subsequent secretion of PME into the cell wall (Bosch and Hepler, 2005; Dorokhov et al., 2006; Micheli, 2001). The members of the PME multigene family are well known to play a role in plant growth and development and in plant–pathogen interactions; they modulate pH and ion balance and affect cell wall porosity (Nairn et al., 1998 and references therein; Pressey, 1984), and have been implicated in plant responses to pathogen attack (Markovic and Jornvall, 1986) and in plant virus movement between host cells (Chen and Citovsky, 2003; Chen et al., 2000; Dorokhov et al., 1999).

The essential function of PMEs in the formation of plant cell walls also implies a major role for PME in the pollen tube growth, which obviously involves dramatic changes in the cell wall dynamics. Indeed, recent analysis of pollen-specific transcriptome of *Arabidopsis* indicated that numerous PMEs are specifically expressed in floral buds, including pollen (Pina et al., 2005). This aspect of the pollen tube growth, however, has been largely neglected; it has received attention only in the last 2 years, and the resulting studies have already yielded valuable insights into the complexity and importance of the PME involvement in pollen development (Bosch et al., 2005; Jiang et al., 2005; Pina et al., 2005; Tian et al., 2006).

The first functional analysis of a pollen tube-expressed PME focused on a novel *Arabidopsis* gene, *VANGUARD1* (*VGD1*) (Jiang et al., 2005). *VGD1*, which encodes a 595-amino-acid-long PME-like protein, is expressed specifically in the pollen grain and tube and localizes to the plasma membrane and the cell wall. Although the pollen grains of a pollen-specific gametophytic *vgd1* mutant of *Arabidopsis* germinated normally on the stigmatic surface and invaded the stigma, their tubes grew much slower than those of the wild-type pollen within the style and the transmitting tract (Jiang et al., 2005). In addition, the *vgd1* pollen tubes were unstable, bursting more frequently than the wild-type tubes when germinated and grown *in vitro*, indicating that the *vgd1* mutation alters the mechanical properties of the cell wall. While the *vgd1* mutant plants were defective in normal growth of pollen tubes in the style and transmitting tract tissues, and they showed a reduced male fertility, no other significant phenotypic alternations were detected, confirming the pollen-specific functionality of *VGD1*. Biochemical characterization of the homozygous *vgd1* mutant pollen (Jiang et al., 2005) revealed a small, but consistent reduction in the overall PME activity to 82% of the wild-type plants known to express more than 12 different PMEs

in their pollen (Pina et al., 2005; Tian et al., 2006). These observations indicated that *VGD1* is indeed a functional PME, and that even a relatively small alteration in the balance of the PME activities in pollen results in far-reaching developmental, functional, and morphological/mechanical changes in the pollen tube (Jiang et al., 2005).

The second pollen-specific PME characterized to date is the *Arabidopsis* AtPPME1 (Tian et al., 2006) identified by the Fluorescent Tagging of Full-Length Proteins (FTFLP) technique (Tian et al., 2006). FTFLP – which inserts an autofluorescent marker sequence, e.g., green fluorescent protein (GFP) or its various spectral variants, within the last exon of a full-length genomic sequence of the gene of interest controlled by its native regulatory elements – faithfully reproduces the native level and pattern of gene expression as well as the sub-cellular localization of the fluorescently tagged gene product (Tian et al., 2004). Characterization of expression patterns of AtPPME1 by FTFLP revealed that this protein is restricted solely to the pollen grains, accumulating around the cell periphery and in the cytoplasm and the ER/Golgi endomembrane system (Fig. 1A). Within the growing pollen tube, AtPPME1, similarly to *VGD1* (Jiang et al., 2005), was dispersed throughout the entire volume of the tube (Tian et al., 2006) (Figs. 1B, C). Reverse genetics experiments using a pollen-specific gametophytic *atppme1* mutation demonstrated the AtPPME1 involvement in determination of the growth rate and the shape of the pollen tubes in *Arabidopsis*. Mutant *atppme1* plants displayed slower growth and irregular shape of pollen tubes grown *in vitro*, but retained the wild-type morphology of ungerminated pollen grains. Similarly to the *vgd1* mutant plants, the homozygous *atppme1* mutant pollen exhibited a 20% decrease in the overall PME activity, but, unlike the *vgd1* mutant, the *atppme1* plants displayed no apparent effects on stability of *in vitro*-grown pollen tubes or on plant fertility (Tian et al., 2006).

Because both *vgd1* and *atppme1* mutations resulted in comparable reductions in the overall pollen PME activity, but only *vgd1* caused pollen tube instability and led to male gametophytic defects (Jiang et al., 2005; Tian et al., 2006), *VGD1* and AtPPME1 (and, potentially, other pollen-specific PMEs) may play functionally different and non-redundant roles in pollen tube development and growth. Alternatively, the observed differences in pollen tube stability may arise from different *in vitro* pollen tube growth conditions, and *VGD1* and AtPPME1 may in fact perform similar, but additive functions. In this scenario, one could speculate that a double *vgd1/atppme1* mutant would exhibit a cumulative phenotype of its parental mutations, i.e., pollen tubes that are even more slow growing, irregularly shaped, and unstable.

Another important insight into the pollen PME activity came from the study in which a heterologous PME from orange was exogenously applied to germinated pollen grains of *Lilium formosanum* and tobacco, resulting in thickening of the pollen tube cell wall at the tip, with the consequent inhibition of the pollen tube growth (Bosch et al., 2005). These observations suggest that the enhanced extracellular PME activity generates extra carboxyl groups on the pectin residues in the cell wall,

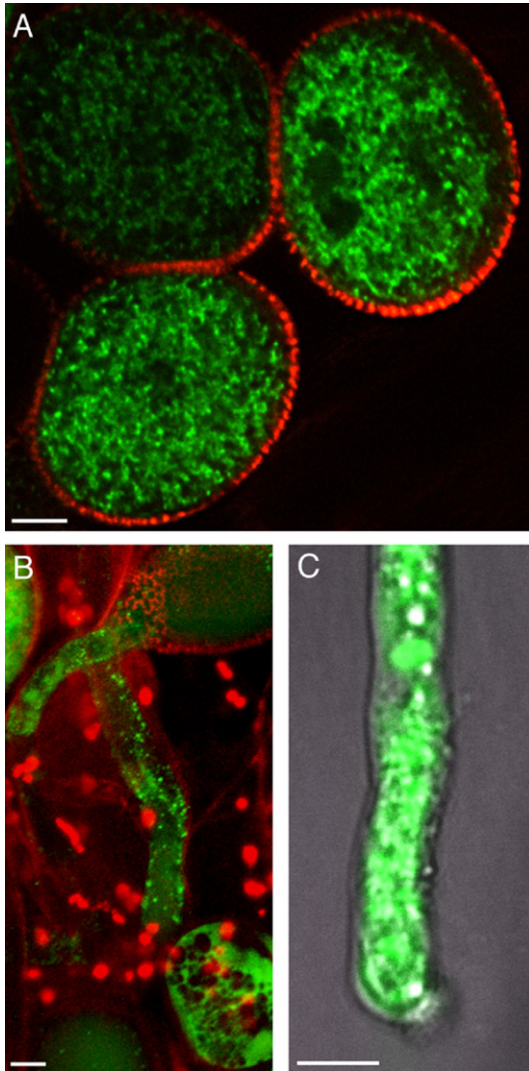


Fig. 1. Expression of *Arabidopsis* pollen-specific PME, AtPPME1, in pollen grains and pollen tubes. The full-length AtPPME1 was tagged with the yellow spectral variant of the green fluorescent protein (YFP) and transgenically expressed in *Arabidopsis* from its native regulatory elements; plant cell walls were visualized by staining with propidium iodide (Tian et al., 2006). (A) Mature pollen grains in an anther sac. (B) Pollen grains and tubes growing between stigmatic papilla in a living pistil. (C) Pollen tube germinated and grown for 24 h *in vitro*. YFP signal is in green, and plastid autofluorescence and propidium iodide signal are in red. Image in panel A is a single confocal section; images in panels B and C are projections of several confocal sections. Scale bars=10 μ m.

which are then cross-linked by calcium and thus contribute to the cell wall thickening and tube growth inhibition. Interestingly, PME applied “endogenously”, i.e., by over-expression, caused a similar effect of inhibition of the tube growth, probably through similar changes in the mechanical properties of the apical tube wall. The same study also identified a novel tobacco pollen-specific PME, NtPPME1, and characterized this enzyme in respect to the activities of its pre-region and pro-region/PMEI domains (Bosch et al., 2005). Subsequent experiments demonstrated that NtPPME1 plays an important role in pollen tube growth as its silencing in tobacco retards the tube growth *in vivo*, albeit without detectable changes in the overall PME

activity (Bosch et al., 2005). Thus, all studies of pollen-expressed PMEs point to a critical role of this class of cell wall-modifying enzymes in regulation of the pollen tube growth and morphogenesis.

Cellulose synthases

In addition to PMEs, cellulose synthases have been implicated in regulation of the pollen tube growth. The first plant cellulose synthase genes were identified through their high homology to cellulose synthases from bacteria (Pear et al., 1996). Cellulose synthases belong to a large family of β -glycosyltransferases, which includes mammalian hyaluronan synthases and fungal chitin synthases (Henrissat and Davies, 2000). There are about a dozen of cellulose synthase genes in *Arabidopsis* (Richmond and Somerville, 2000; Saxena and Brown, 2000), and computational analysis of the *Arabidopsis* genome indicated that a large number of additional uncharacterized sequences, termed *CELLULOSE SYNTHASE-LIKE* (CSL) genes, encode for putative glycosyltransferases (Hazen et al., 2002; Richmond and Somerville, 2000; Saxena and Brown, 2000).

At least one member of the *Arabidopsis* CSL gene family, a ubiquitously expressed *AtCSLA7*, has been shown to participate in the pollen tube growth, suggesting a requirement for β -linked polysaccharides for this process (Goubet et al., 2003). Reverse genetics experiments showed that male transmission efficiency of the mutagenic insertion in the *AtCSLA7* gene was significantly reduced in comparison to the wild-type plants, while female transmission was unaffected; this male gametophytic defect in the *AtCSLA7* gene mutant indicated the importance of *AtCSLA7* for pollen functionality. Because in these mutant plants pollen tube guidance and fertilization were not affected, the mutation in *AtCSLA7* likely caused pollen tubes to grow slower and/or shorter in the pistil, precluding them from reaching the more distal ovules. The identity of the polysaccharide synthesized by *AtCSLA7* and the detailed mechanism by which *AtCSLA7*, a ubiquitously expressed protein, affects the pollen tube growth, however, remain enigmatic (Goubet et al., 2003).

The function of the cell wall-modifying enzymes in pollen tube growth is inherently dependent on transport of the cell wall components (including the enzymes themselves) to the tip of the pollen tube (reviewed in Hepler et al., 2001; Steer and Steer, 1989) whereas the polarity of the tip growth requires actin (reviewed in Vidali and Hepler, 2001). Both vesicular transport and the actin microfilament dynamics are controlled by small GTPases belonging to the Ras superfamily (Cole and Fowler, 2006; Gu et al., 2004; Molendijk et al., 2004; Zheng and Yang, 2000a,b), making these small regulatory proteins key players in the pollen tube growth events.

Rab and Rop/Rac small GTPases: regulation of membrane vesicle traffic and actin dynamics

Small GTPases of the Ras superfamily are low molecular mass signaling proteins with regulatory activity, which depends

on their association with GTP or GDP. Historically, small GTPases have been viewed as binary molecular switches, with ‘on’ and ‘off’ positions being their GTP- and GDP-bound states, respectively. In their active, GTP-bound form, these proteins activate downstream effectors until they are converted into an inactive, GDP-bound form via their own GTPase activity. The intrinsic guanine nucleotide exchange and hydrolysis activities of some small GTPases, such as Ran, are weak, and their interactions with downstream effectors are regulated by guanine nucleotide exchange factors (GEFs) and GTPase activating proteins (GAPs) (Meier, 2005). Small GTPases regulate a wide range of cellular eukaryotic processes, from membrane fusions (Gournier et al., 1998) to nuclear import (Steggerda and Paschal, 2002). In pollen tubes, they have been implicated in at least two distinct and vital functions: regulation of membrane vesicle trafficking and regulation of actin microfilaments.

GTPases: regulation of membrane trafficking

Rapid and polarized pollen tube growth demands an active secretory system which can provide a large amount of material needed to support the forward progression of the tube. Hence, exocytosis is one of the major processes driving the polarized cell growth (reviewed in Hepler et al., 2001; Steer and Steer, 1989), providing the growing tip with cell wall components, membrane material, enzymes, and receptor molecules (Muschiatti et al., 1998) that sense female signals (Cheung et al., 1995), and more. Interestingly, despite the obvious prevalence of the exocytotic processes at the tip elongation site, endocytosis was also found to occur at the tip of the growing pollen tube – as shown using internalization of fluorescently labeled impermeant dyes (Carroll et al., 1998; O’Driscoll et al., 1993) – and it was proposed to be involved in the retrieval of the excess cellular materials and in membrane turnover (Derksen et al., 1995; Picton and Steer, 1983). By maintaining a fine balance between the rates of anterograde and retrograde vesicle trafficking, both growth and recycling of membrane components are achieved, making these two processes a major driving force within the expanding region of the cell membrane of the pollen tube.

Both exo- and endocytosis are governed by a membrane fusion machinery which is strikingly similar between plants other eukaryotes (reviewed in Battey et al., 1999; Sanderfoot and Raikhel, 1999; Vitale and Denecke, 1999). For example, plants encode homologs of the mammalian SNARE complex that are involved in fusion between vesicles and the target membrane (The *Arabidopsis* Genome Initiative, 2000). Furthermore, although plants do not contain true Ras GTPases (Vernoud et al., 2003), they encode homologs of mammalian and yeast Rab and Ypt, respectively, members of a large family of Ras-related small GTPases that regulate anterograde and retrograde vesicle transport between endomembranes and the plasma membrane (Rutherford and Moore, 2002; The *Arabidopsis* Genome Initiative, 2000; Vernoud et al., 2003). Although rapid growth and a highly dynamic intracellular trafficking system targeting the transport vesicles to the tip area are the hallmark characteristics of growing pollen tube, little had

been known about how these processes are regulated in the pollen cell. In recent years, however, a substantial progress has been made in our understanding of the membrane fusion processes involving small Rab GTPases in the pollen (Cole and Fowler, 2006; Molendijk et al., 2004).

Like other members of the Ras GTPase superfamily, Rab proteins cycle between two distinct conformations, a GDP-bound, mainly inactive cytosolic form, and a GTP-bound, membrane-associated active form. Protein complexes formed in response to Rab activation perform diverse functions in membrane metabolism, including coupling of endomembranes to the cytoskeleton, as well as long-range vesicle docking/tethering interactions that regulate membrane fusion activity mediated by the SNARE machinery (Olkkonene and Stenmark, 1997; Pfeffer and Aivazian, 2004). Similarly to other small GTPases, Rabs have weak intrinsic guanine nucleotide exchange and GTP hydrolysis activities, and therefore their interactions with other proteins are regulated by GEFs and GAPs (Meier, 2005).

Being by far the most complex among all families of Ras proteins (Pereira-Leal and Seabra, 2001; Stenmark and Olkkonen, 2001), numerous Rab homologs have been identified in various plant species, including 57 Rabs in *Arabidopsis* (Rutherford and Moore, 2002; Vernoud et al., 2003). Associating with different endomembrane compartments, they regulate membrane budding, manage vesicle transport to the target areas and promote vesicle and target membrane fusion, thus being vital components for the transport of vesicles through the endomembrane system (Armstrong, 2000; Sanderfoot and Raikhel, 1999; Schimmoller et al., 1998; Seabra and Wasmeier, 2004; Tamm et al., 2003; Zerial and McBride, 2001). Several findings suggest that members of the Rab GTPase family play a crucial role in regulation of pollen tip growth. A cDNA of Rab GTPase, belonging to the Rab11 subfamily and designated NtRab11b, was isolated from tobacco pollen (Haizel et al., 1995) and shown to reside mainly in the transport vesicle-occupied apical clear zone of the growing pollen tip, providing evidence for a vesicular association of this protein (Derksen et al., 1995; Lancelle and Hepler, 1992). This localization of NtRab11b was dispersed by treatment with the actin-depolymerizing drugs, suggesting that NtRab11b might be associated with transport vesicles that track along actin filaments (Hepler et al., 2001). Furthermore, NtRab11b may be involved in endocytosis as functional inhibition of NtRab11b abolished the apical accumulation of extracellular fluorescent impermeant dye (Haizel et al., 1995).

Correct targeting and localization of NtRab11b likely depend on proper regulation of its GTPase activity by GEFs and GAPs because expression of a NtRab11b dominant-negative mutant, locked in its GDP-bound form, completely blocked the apical accumulation of NtRab11b while a constitutively activating mutation, locking the protein in its GTP-bound form, rendered NtRab11b more evenly distributed within the apical dome (de Graaf et al., 2005). Potentially, the dominant-negative NtRab11b mutant remains associated with the donor membranes, resulting in its primarily Golgi localization and inability to traffic to the tube apex. Conversely, the constitutive active NtRab11b mutant

most likely is released from the target membranes very slowly, resulting in a more uniform tip staining. Expression of either dominant-negative or constitutive active mutants of NtRab11b inhibited *in vitro* pollen tube elongation and directionality, and the expressing plants exhibited reduced male fertility. For the dominant-negative NtRab11b-expressing pollen, the defect likely stemmed from the combined effects of reduced tube growth rates and compromised tube capacity to penetrate ovules whereas, for the constitutive active NtRab11b-expressing pollen, the severely reduced fertility likely resulted from inhibition of pollen germination and tube growth (de Graaf et al., 2005). Thus, a correct ratio of active to inactive forms of NtRab11b must be stringently maintained for the optimal vesicular transport activity at the pollen tube tip. Collectively, the studies of NtRab11b established that properly regulated membrane trafficking activity is a key to rapid, tip-focused pollen tube growth and male fertility and, ultimately, successful plant sexual reproduction.

Another small Rab GTPase from tobacco pollen, NtRab2, was shown to function in the secretory pathway between the ER and the Golgi (Cheung et al., 2002). NtRab2 was strongly expressed in the pollen, as well as in other rapidly growing tissues with elevated demands for secretory activities, such as young seedlings, elongating hypocotyls, emerging true leaves and developing roots. On the other hand, the NtRab2 transcripts were not detectable in mature tissues, such as full-grown leaves (Cheung et al., 2002). In pollen tube, NtRab2 localized to the Golgi bodies, and its dominant-negative, inactive mutant blocked the delivery of Golgi-resident, as well as secreted marker proteins to their normal locations, consequently halting the pollen tube growth. When NtRab2 was over-expressed in transiently transformed leaf protoplasts and epidermal cells, in which the endogenous NtRab2 mRNA is not detected, it was not efficiently localized to the Golgi bodies, indicating that NtRab2 may be specialized to function mainly in the high secretory cell types, and that other cells may not possess components required for the normal function of this GTPase (Cheung et al., 2002).

GTPases: regulation of actin dynamics

In addition to Rabs, Ras-related GTPases belonging to the Rop (Rho of plants) – also referred to as Rac (Gu et al., 2004; Winge et al., 2000) – family are involved in the pollen tube growth (Chen et al., 2002, 2003; Gu et al., 2003, 2004; Li et al., 1999; Winge et al., 2000; Zheng and Yang, 2000a). The *Arabidopsis* genome encodes 11 Rops/Racs (Gu et al., 2004; Winge et al., 2000; Zheng and Yang, 2000b) belonging to four phylogenetic groups – group I (AtRop8), group II (AtRop9–AtRop11), group III (AtRop7) and group IV (AtRop1–AtRop6) – and members of the same group often exhibit functional redundancy, while members of different groups may perform distinct functions (Gu et al., 2004). The role of Rops/Racs in pollen development is well studied and, for its detailed description, the reader is referred to recent reviews (Gu et al., 2004; Zheng and Yang, 2000a, b). Briefly, in *Arabidopsis*, AtRop1, AtRop3, AtRop5, AtRop9–AtRop11, and AtRop8 are

expressed in pollen (Gu et al., 2003, 2004; Li et al., 1998), and several of them have been implicated in regulation of tip actin dynamics and, possibly, regulation of calcium ion gradients. For instance, AtRop1 has been shown to regulate pollen germination and tube growth (Fu et al., 2001; Kost et al., 1999; Li et al., 1999). Because Rho GTPases regulate actin organization in yeast and animals (e.g., Kuhn et al., 2000), a possible role for AtRop1 in the similar processes in the pollen was examined (Fu et al., 2001). The findings suggested that AtRop1 activation was required for the tip actin assembly, and that the Rop1 signaling at the pollen tube tip regulated actin dynamics (Fu et al., 2001). The role of actin microfilaments in the pollen tube physiology is underscored by the recent observations that pharmacological disruption of actin polymerization inhibits pollen tube growth (Fu et al., 2001; Vidali and Hepler, 2001; Vidali et al., 2001), while promoting actin polymerization and stabilization of actin microfilaments by jasplakinolide promotes reversed cytoplasmic streaming in the apex of pollen tubes (Cárdenas et al., 2005). The proposed model for the AtRop1 action, therefore, suggests that the localization of the active Rop1 signaling complex defines and establishes tip growth domain and regulates the actin microfilament dynamics in the growing pollen tube (Gu et al., 2003). However, the exact mechanism of the AtRop1-mediated regulation of actin assembly, as well as the potential involvement of Rops in formation and regulation of the calcium ion gradient within pollen tube remains elusive (Gu et al., 2003; Li et al., 1999).

Several other members of the Rop/Rac family, such as the *Arabidopsis* AtRop9/AtRac7 GTPase, also affect pollen tube growth. Over-expression of AtRac7 in *Arabidopsis* induced a wide range of severe pollen phenotypes, which affected mostly the extent of the tube growth and intracellular organization and reduced the seed set in transgenic plants, further illustrating the importance of the Rop/Rac GTPase activity for pollen development and plant sexual reproduction (Cheung et al., 2003). Also, over-expression of the *Arabidopsis* AtRop1/AtRac11 (Fu et al., 2001; Li et al., 1999) and AtRac2 (Kost et al., 1999), as well as the tobacco NtRac1 (Chen et al., 2003), which is most similar to AtRop1/AtRac11 (Chen et al., 2003; Cheung et al., 2003), induced depolarized pollen tube growth most likely via actin depolymerization (Cheung et al., 2003) by an as yet unknown mechanism.

Taken together, these studies suggest involvement of two major families of small GTPases, Rabs and Rops/Racs, in the pollen tube growth. Although both protein families are related to each other, belonging to a single superfamily of Ras-related GTPases, their roles in the tube elongation process appear strikingly different. Specifically, pollen Rabs may function in vesicular transport and secretory processes in the nascent pollen tube. In contrast, pollen Rops/Racs likely participate in signal transduction and reorganization of actin microfilaments. Correct functionality of both Rabs and Rops/Racs is vital for proper pollen growth, because disruption of activity and/or expression levels of individual Rabs and/or Rops/Racs is detrimental to normal pollen development.

Whereas Rab and Rop/Rac GTPases regulate vesicular transport and actin microfilament dynamics, the actual movement

of the transport vesicles and, hence, pollen tube elongation, likely requires the action of diverse molecular motors (reviewed in Cai et al., 2000a). Unlike the actomyosin motility system, involvement of which in pollen tube growth is well described (e.g., Heslop-Harrison and Heslop-Harrison, 1989; Heslop-Harrison et al., 1988; Kohno et al., 1990; Tang et al., 1989a,b), the role of microtubule-associated molecular motors, i.e., dyneins and kinesins, has received less attention. Yet, increasing evidence indicates that both dynein and kinesin motors may fulfill an important function in vesicular transport within pollen tubes and in pollen tube growth (reviewed in Cai et al., 2000a; Moscatelli et al., 2003; Romagnoli et al., 2003b).

Microtubule-associated molecular motors: dyneins and kinesins

Vesicular transport in eukaryotic cells often relies on the dynamic interactions between motor proteins, anchored to the vesicle surface, and the cytoskeleton (reviewed in Allan and Schroer, 1999). Most likely, the movement of membrane vesicles and organelles during pollen tube growth is based on the same principles and thus involves microtubule-associated molecular motors (reviewed in Cai et al., 2000a; Moscatelli et al., 2003; Romagnoli et al., 2003b). These motor proteins – which biochemically represent enzymes that convert the chemical energy of ATP hydrolysis into mechanical force – belong to two major families: dyneins (Hirokawa, 1998; Holzbaur and Vallee, 1994; King, 2000, 2002; Moscatelli et al., 2003) and kinesins (Hoyt, 1994; Romagnoli et al., 2003b). Their main function is to translocate various cargoes, including vesicles and organelles, within a cell; in this intracellular transport system, dyneins and kinesins are thought to mediate movement in the opposite directions, i.e., toward the minus or the plus end of the microtubule, respectively (reviewed in Hirokawa, 1998; Moscatelli et al., 2003).

Dyneins

Dyneins, the molecular motor complexes of 1–2 MDa, are involved in various eukaryotic cell functions, including vesicle trafficking, mitotic spindle organization, Golgi maintenance and more (reviewed in Cai et al., 2000a; King, 2002). The motor activity of dyneins is promoted by their ~500-kDa heavy chains, which are responsible for interactions with microtubules and for ATP binding (Holzbaur and Vallee, 1994; King, 2000). The other components of the dynein complex, the intermediate and light chains, with molecular masses varying from 8 kDa to 80 kDa, are responsible for the motor–cargo interactions (Susalka et al., 2000).

Because vesicle secretion is one of the major mechanisms for the pollen tube elongation, it is not surprising that dynein heavy chain-like proteins were discovered in the pollen tubes of tobacco plants. These proteins interacted with microtubules in an ATP-dependent fashion (Moscatelli et al., 1995), and they contained epitopes immunologically similar to other dynein heavy chains (Moscatelli et al., 1998). Moreover, a sequence with 98% homology to the *Chlamydomonas* dynein heavy chain

was amplified from a cDNA library of pollinated styles of tobacco. On the other hand, dynein light chains have not been identified in pollen; recent evidence, however, suggests that their functions may be carried out by the heavy chains themselves. This claim is based on immunological cross-reactivity between a dynein light chain from *Chlamydomonas* (LeDizet and Piperno, 1995a,b) and a 110-kDa polypeptide from tobacco pollen tubes (Moscatelli et al., 1995).

Kinesins

Kinesin-like proteins, which have been identified in most eukaryotes (reviewed in Barton and Goldstein, 1996; Hirokawa, 1998), usually comprise three functional and structural domains: a microtubule-binding force-generating head, a coiled-coil stalk region involved in dimer formation, and a cargo-binding tail domain. Kinesin-like proteins are involved in intracellular organelle transport, as well as mitotic and meiotic spindle movement and stabilization. In pollen, the first protein with biochemically distinct kinesin characteristics was identified in tobacco, where it localizes to the tube apex and associates with small vesicular structures (Cai et al., 1993; Tiezzi et al., 1992). A 100-kDa kinesin-related protein was then identified in hazel (*Corylus avellana*) pollen, where it was also found mainly in association with vesicles (Liu et al., 1994), lending further support to the notion that pollen kinesins mediate vesicular transport.

In recent years, additional microtubule-associated molecular motors from pollen have been discovered. For example, a 90-kDa polypeptide (ATP-MAP) from tobacco pollen released from microtubules by ATP exhibits kinesin-like properties, including association with microtubules in an ATP-dependent manner, enhanced microtubule binding in the presence of non-hydrolyzable ATP analogs, cross-reaction with antibodies against conserved kinesin domains and induction of microtubule gliding in an *in vitro* motility assay (Cai et al., 2000b). ATP-MAP was shown to bind to organelles associated with microtubules in the cortical region of the pollen tube, suggesting that this kinesin-related protein moves organelles in the tip region (Cai et al., 2000b).

Additional evidence of the involvement of kinesin-like molecular motors in pollen tube growth originates from the observations of movement of tobacco pollen organelles along *in vitro* polymerized microtubules in the presence of ATP. This movement was not dependent on addition of cytosol, suggesting that the motor proteins remained attached to the surface of the purified organelles. Indeed, following a potassium iodide wash to remove peripheral membrane proteins, the isolated organelles released factors that promoted gliding of carboxylated beads along microtubules and cross-reacted with anti-kinesin antibodies, leading to identification of a novel 105-kDa pollen-specific kinesin-related motor protein (Romagnoli et al., 2003a,b).

Interestingly, an important insight into pollen kinesins was gained through studies of “leaf hairs”, the trichomes. Mutational analysis of the trichome development pathway identified a specific mutation, termed *zwichel* (*zwi*), which, besides producing trichomes with reduced branching and a shorter

stalk, affected the pollen tube growth (Folkers et al., 1997; Oppenheimer et al., 1997). The *ZWI* gene (Oppenheimer et al., 1997) encoded a kinesin-like calmodulin-binding protein (KCBP), a member of the kinesin family regulated by calmodulin (Narasimhulu et al., 1997; Oppenheimer et al., 1997; Reddy et al., 1996; Song et al., 1997). Subsequent genetic screen for suppressors of the strong *zwi-3* allele identified three mutants, termed suppressors of *zwi-3* (*suz*), one of which, *suz1*, displayed a synthetic sterile phenotype in the presence of the *zwi-3* mutation (Krishnakumar and Oppenheimer, 1999). Because the parental *zwi-3* and *suz1* plants were completely fertile, the reduced fertility of the *suz1/zwi-3* double mutant suggests that the protein products of the corresponding genes may play roles in pollen development that are at least partially redundant to other cellular factors which can substitute for either, but not for both, of the *SUZ1* and *ZWI* functions. Reciprocal outcrosses of the *suz1/zwi-3* mutants to the wild-type *Arabidopsis* plants failed to produce seeds when the *suz1/zwi-3* mutant was used as the male, but not as the female parent, indicating that the reduced fertility of the double mutant plants was due to male sterility. No defects in reproductive systems of the *suz1/zwi-3* mutants were observed, except for alterations in pollen germination *in vitro* (Krishnakumar and Oppenheimer, 1999). Specifically, germination frequency of the double mutant pollen was strongly reduced as compared to the wild-type pollen, and, even if *suz1/zwi-3* pollen did germinate, their tubes were much shorter, aberrantly shaped and had anatomical anomalies, such as numerous spherical bodies, presumably vesicles, not observed in the wild-type or *zwi-3* pollen tubes. Thus, the *ZWI* protein most likely represents a kinesin-like function involved in vesicular movement during pollen tube development and growth (Krishnakumar and Oppenheimer, 1999).

The directional pollen tube growth is achieved through a concerted action of cell wall-modifying enzymes and vesicular transport pathways which include regulatory Rab and Rop/Rac GTPases and microfilament- and microtubule-associated motility systems. A significant role in determination of pollen tube polarity belongs to intracellular distribution of cytosolic free calcium and such second messengers as phosphoinositides and cAMP (reviewed in Malhó et al., 2000).

Second messengers

PIP₂, IP₃, and phosphatidic acid

Phosphatidylinositol 4,5-bisphosphate (PIP₂) and its derivatives play roles in multitude of cellular processes, including cytoskeleton dynamics, vesicle trafficking, calcium ion homeostasis and others (Cremona et al., 1999; Stevenson et al., 2000), many of which represent important events in process of the pollen tube tip growth. Depending on the type of the phospholipase that uses PIP₂ as a substrate, it can be metabolized to smaller compounds that function as second messengers in the cell. For instance, inositol 1,4,5-trisphosphate (IP₃) and diacyl glycerol (DAG) can be derived from PIP₂ by phospholipase C, and DAG can be further converted by a DAG kinase to phosphatidic acid

(Munnik, 2001); alternatively, phosphatidic acid can be derived directly from PIP₂ through the action of phospholipase D (Powner and Wakelam, 2002).

Although IP₃ is involved in a variety of cellular processes, one of its major functions as a second messenger is regulating the release of calcium ions from internal storage compartments (Martin, 1998), which appears also to be one of its roles in the growing pollen tube (Malhó, 1998). Both PIP₂ and IP₃ were shown to be involved in maintenance of the calcium ion gradient and vesicle secretion in the apex of pollen tubes, and thus in regulation of the tip growth (Monteiro et al., 2005). When intracellular levels of PIP₂ and IP₃ in growing pollen tubes were altered using photolysis of caged PIP₂ and IP₃ osmotically loaded into *Agapanthus umbellatus* pollen tubes, tip-focused calcium gradient was modulated, reducing the rate of the tip growth and reorienting its axis (Monteiro et al., 2005). Interestingly, the detailed physiological effects caused by the increase of the intracellular levels of PIP₂ and IP₃, were somewhat different. The increased PIP₂ concentration inhibited apical secretion and reduced, but did not arrest, tube growth. The increase in IP₃, although causing a calcium spike similar in its magnitude to that induced by the elevated PIP₂, stimulated apical secretion and arrested tube growth (Monteiro et al., 2005). Several scenarios may explain these different effects of PIP₂ and IP₃; for example, the calcium release mechanisms for PIP₂ and IP₃ may vary, causing different cellular responses or the catabolism of PIP₂ can produce, in addition to IP₃, phosphatidic acid (see above) which, in turn, may generate additional metabolic effects.

In fact, phosphatidic acid has been shown to elicit strong physiologic effects on pollen tube growth (Monteiro et al., 2005). The reduction in the effective concentration of phosphatidic acid, promoted by antagonists of its accumulation (such as butanol) and phospholipase inhibitors, reversibly arrested development of tip polarity. On the molecular level, the reduction in phosphatidic acid levels caused immediate dissipation of the calcium ion gradient and inhibited apical plasma membrane recycling. Phosphatidic acid is known to stimulate translocation of calcium ions across cell membranes (Ohsako and Deguchi, 1981), which may explain its effect on the calcium gradient within the pollen tube tip. Yet, one cannot rule out other possible explanations, as essentially any stimulus leading to growth arrest has been found to disrupt calcium homeostasis (Holdaway-Clarke and Hepler, 2003), either because of a direct effect on calcium ion fluxes or as a consequence of some other indirect effect.

Phospholipase C

The implication of PIP₂ and its derivatives IP₃ and phosphatidic acid in regulation of the growth and axis orientation of the pollen tube tips places phosphoinositides and lipids as key regulators of tip growth. Thus, phospholipases probably are also involved in this process, since *in vivo* IP₃ and, ultimately, phosphatidic acid arise from the hydrolysis of PIP₂ by these enzymes. Supporting this notion, a novel phospholipase C, Pet PLC1, was discovered in the pollen tubes of *Petunia inflata*. The protein was expressed

predominantly in the anther/pollen and localized mainly to the apical plasma membrane of the pollen tube (Dowd et al., 2006). A catalytically inactive mutant of Pet PLC1 was expressed in nascent pollen tubes of *Petunia*, producing a dominant-negative phenotype with delocalized apical calcium ion gradient, and eventually resulting in disrupted actin cytoskeleton, arrested tube growth and swelling of the pollen tube tip. Also, over-expression of the C2 calcium/phospholipid binding domain of Pet PLC1 essentially phenocopied the expression of the inactivated Pet PLC1, suggesting that the C2 domain may interfere with the regulation of the endogenous enzyme and, thus, with calcium and/or phospholipid binding. On the other hand, expression of the C2 domain altered membrane association of the full-length Pet PLC1,

raising a possibility that C2 simply displaces the full-length enzyme from its native location in the membrane (Dowd et al., 2006). Intriguingly, the phenotypic effects of expression of C2 or the inactive Pet PLC1 mutant could be suppressed by actin depolymerization, but they were unaltered by changes in extracellular calcium levels. Thus, Pet PLC1 likely regulates growth of the pollen tube tip via modification of actin dynamics, rather than by directly altering calcium fluxes (Dowd et al., 2006). Because Pet PLC1 shares a significant degree of homology with phospholipases C from other plant species, e.g., *Arabidopsis* phospholipase C2 (AtPLC2) (Dowd et al., 2006), this type of enzymes may represent an important and general element of the cellular machinery for controlling apical extension of the pollen

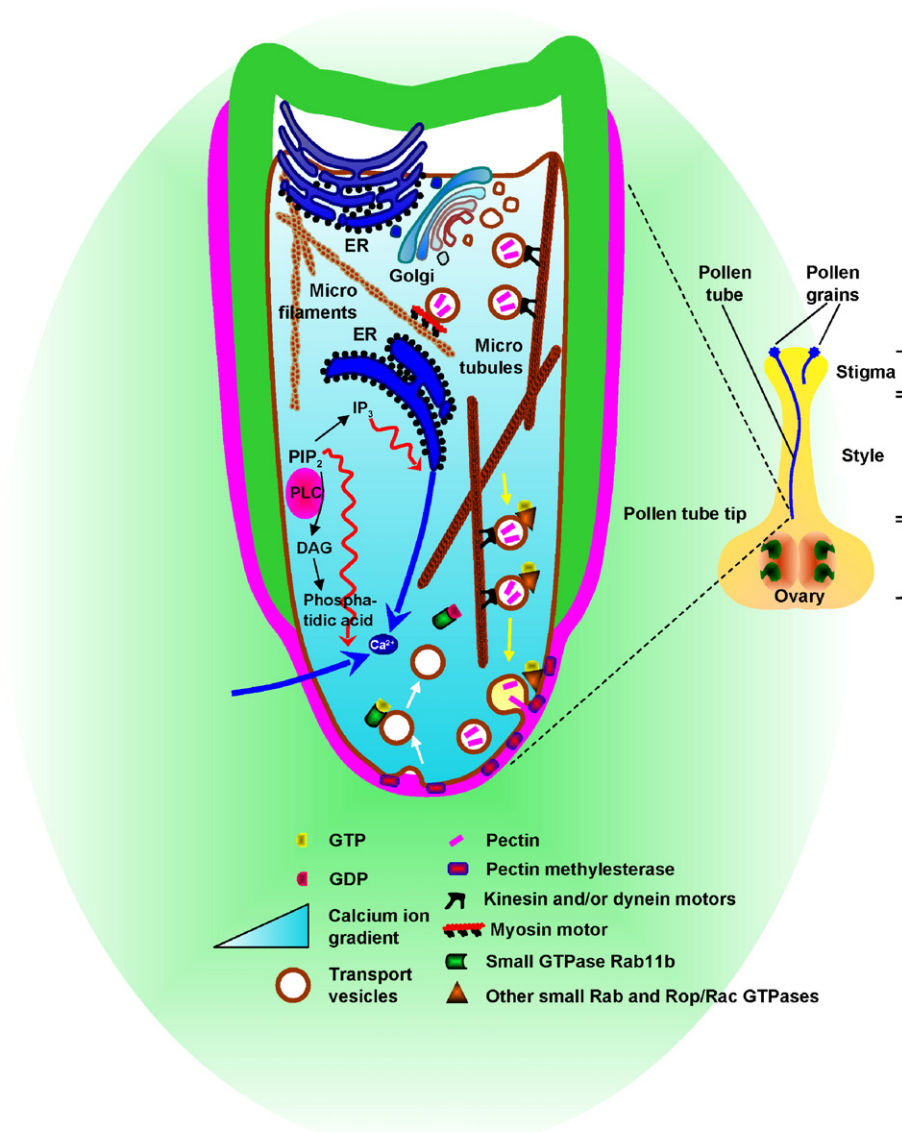


Fig. 2. Summary of the major roles of cell wall-modifying enzymes, small GTPases, molecular motors, vesicular transport, and second messengers in the growth of the pollen tube tip. Pollen grains land on the stigma, germinate, and their tubes grow through the spaces between the cells of the style until the pollen tip reaches the ovary and fertilizes the egg. During pollen tube growth, actin microfilaments, and probably microtubules, provide biological framework for heavy vesicular trafficking, as well as mechanical support, toward the elongating pollen tip. The corresponding molecular motors – myosin, dyneins, and kinesins – mobilize transport vesicles laden with cell wall materials. Rab and Rop/Rac GTPases regulate membrane fusion events and signaling processes. Second messenger-producing enzymes, e.g., phospholipase C, provide signaling molecules, such as DAG and IP₃ which, together with calcium ion gradient, regulate and direct pollen tube growth. A cell wall-modifying enzyme pectin methyltransferase (PME) deesterifies pectins, which then are cross-linked by calcium ions, creating a new layer of pectin.

Table 1
Summary of cell wall modifying enzymes, small GTPases, molecular motors, and second messenger-producing/sensing proteins involved in pollen tube growth in various plant species

Protein class and cellular function	Protein name	Species	Effect in pollen tube growth	Reference
<i>Pectin methylesterases (PMEs)</i> Demethylesterification of homogalacturonan component of pectin during cell wall synthesis	Vanguard 1 (VGD1)	<i>Arabidopsis thaliana</i>	Pollen-specific PME that determines mechanical properties of the cell wall, morphology and growth of the pollen tube	(Jiang et al., 2005)
	AtPPME1	<i>A. thaliana</i>	Pollen-specific PME that determines growth rate and morphology of the pollen tube	(Tian et al., 2006)
	NtPPME1	<i>Nicotiana tabacum</i>	Pollen-specific PME required for pollen tube growth	(Bosch et al., 2005)
<i>Cellulose synthases</i> Assembly of cellulose microfibrils	AtCSLA7	<i>A. thaliana</i>	Ubiquitously expressed β -glycosyltransferase that affects late stages of growth and/or termination of extension of the pollen tube	(Goubet et al., 2003)
<i>Rab GTPases</i> Regulation of vesicular transport	NtRab11b	<i>N. tabacum</i>	Pollen-specific small GTPase involved in endocytosis at the pollen tip; over-expression inhibits pollen tube growth	(de Graaf et al., 2005; Haizel et al., 1995; Hepler et al., 2001)
	NtRab2	<i>N. tabacum</i>	Pollen-specific small GTPase that functions in secretory pathway between ER and Golgi and is required for pollen tube growth	(Cheung et al., 2002)
<i>Rop/Rac GTPases</i> Regulation of various cellular processes, including signal transduction and cytoskeleton organization	AtRop1	<i>A. thaliana</i>	Pollen-specific small GTPase that regulates pollen germination and tube growth	(Fu et al., 2001; Kost et al., 1999; Li et al., 1999)
	AtRop9/AtRac7	<i>A. thaliana</i>	Pollen-specific small GTPase, over-expression of which alters pollen tube growth	(Cheung et al., 2003)
	AtRop1/AtRac11, AtRac2	<i>A. thaliana</i>	Pollen-specific small GTPases, over-expression of which induces depolarized pollen tube growth	(Fu et al., 2001; Kost et al., 1999; Li et al., 1999)
	NtRac1	<i>N. tabacum</i>		(Chen et al., 2003; Cheung et al., 2003)
<i>Microfilaments</i> Cytoskeleton	Actins, myosins	All plants	Actin microfilaments and myosin motors are essential for vesicular transport and pollen tube growth	(Cai et al., 2000a; Geitmana et al., 2000; Hepler et al., 2001; Vidali and Hepler, 2001; Vidali et al., 2001)

<i>Microtubules</i> Cytoskeleton	Tubulin	<i>Picea abies, Nicotiana sylvestris</i>	Disruption of microtubule network partially blocks pollen germination and growth	(Anderhag et al., 2000; Joos et al., 1994)
<i>Dyneins</i> Microtubule-associated motor proteins	Dynein heavy chain-like protein	<i>N. tabacum</i>	Molecular motors are involved in vesicle/organelle movement and required for pollen tube growth	(Moscatelli et al., 1995, 1998)
<i>Kinesins</i> Microtubule-associated motor proteins	Kinesin-like proteins (ATP-MAP, 100-kDa and 105-kDa kinesin-related proteins)	<i>N. tabacum, Corylus avellana</i>		(Cai et al., 1993, 2000a; Liu et al., 1994; Romagnoli et al., 2003a,b; Tiezzi et al., 1992)
<i>Kinesin-like calmodulin-binding proteins (KCBPs)</i> Calmodulin-regulated microtubule-associated motor proteins (Sequence unknown) Genetically interacts with ZWI	Zwichel (ZWI) Suppressor of ZWI (SUZ1)	<i>A. thaliana</i> <i>A. thaliana</i>	 A suppressor of mutations in <i>ZWI</i>	 (Folkers et al., 1997; Oppenheimer et al., 1997). (Krishnakumar and Oppenheimer, 1999)
<i>Phospholipase C</i> Metabolizing of fatty acids and production of second messengers DAG and IP ₃	Pet PLC1	<i>Petunia inflata</i>	Regulation of pollen tube growth by modification of actin dynamics	(Dowd et al., 2006)
	AtPLC2	<i>A. thaliana</i>	Pet PLC1 homolog potentially involved in pollen tube growth	(Dowd et al., 2006)
<i>Adenylyl cyclase</i> Produces second messenger cAMP	Pollen signaling protein (PSiP)	<i>Zea mays</i>	Regulation of pollen tube morphology and growth rate	(Moutinho et al., 2001)
<i>Calmodulin</i> Calcium-binding protein that acts as primary sensor of calcium	Calmodulin	<i>Agapanthus umbellatus</i>	Regulation of pollen tube growth and polarity, likely via secretory pathways; activity modulated by cAMP	(Rato et al., 2004)

tube, further emphasizing the role of the calcium/phospholipid signaling system in the pollen tube growth.

cAMP

IP₃ also plays a key role in the regulation of another prototypical second messenger, cAMP, produced by adenylyl cyclases and degraded by phosphodiesterases (Bruce et al., 2002). Although several cAMP-dependent processes have been described in plants (Assmann, 1995; Bolwell, 1995), our understanding of the full extent of the biological effects of cAMP signaling on plant physiology is still incomplete. Imaging of cAMP distribution in living pollen tubes in *A. umbellatus* revealed that altering the resting concentration of cAMP alters the directional growth of the pollen tube tip. Specifically, when placed extracellularly, in the vicinity of an *in vitro*-growing pollen tube, chemicals that elevate the intracellular cAMP, e.g., dibutyryl cAMP and forskolin, attracted the growing tip whereas cAMP antagonists, e.g., theophylline and Rp-8-Br-cAMPS, had the opposite effect on the direction of the pollen tip growth (Moutinho et al., 2001).

Interestingly, although modification of cAMP levels within pollen tubes was accompanied by changes in calcium concentration (Malhó et al., 2000), cAMP was distributed throughout the pollen tube uniformly (Moutinho et al., 2001), and it did not form a tip-focused gradient described for cytosolic calcium ions (reviewed in Holdaway-Clarke and Hepler, 2003). Potentially, cAMP levels in the tip area are altered only transiently due to localized changes in the enzymatic activities of adenylyl cyclases and/or phosphodiesterases (Moutinho et al., 2001). Supporting this idea, a novel pollen signaling protein (PSiP) with homology to fungal adenylyl cyclase was identified in maize. PSiP produced cAMP when expressed in bacteria; furthermore, PSiP-specific antisense oligonucleotides altered the morphology and retarded the growth of pollen tube tips, and these effects were reversed by external application of cAMP and mimicked by cAMP antagonists (Moutinho et al., 2001).

The effects of cAMP on the pollen tube growth may, at least in part, occur via modulation of calmodulin activity (Rato et al., 2004). Calmodulin activity in the pollen tubes of *A. umbellatus* exhibited a tip-focused gradient (Rato et al., 2004), similar to that of cytosolic calcium ions (reviewed in Holdaway-Clarke and Hepler, 2003). Moreover, changes in the calmodulin activity within the tube apex reoriented its growth axis, thus suggesting that calmodulin may be involved in guiding polar growth of the pollen tube. Although till now the detailed mechanism by which calmodulin affects the tube growth process remains obscure, calmodulin activity may depend not only on calcium, but also on the intracellular levels of cAMP, indicating a cross-talk between different signaling pathways in controlling the pollen tube growth (Rato et al., 2004).

Concluding remarks

Directional growth of pollen tube through the pistil toward the ovary is critical for egg fertilization. Understanding the

biosynthetic and regulatory pathways that govern the pollen tube growth, therefore, is central for understanding many aspects of plant sexual reproduction, from its molecular mechanisms to evolution. Recent progress in the studies of pollen tube growth discussed in this review uncovered a plethora of basic cellular processes, such as control of cell shape and growth by a network of cell wall-modifying enzymes, molecular motor-mediated vesicular transport along cytoskeletal tracks, and intracellular signaling by localized gradients of second messengers; the highlights of these processes are summarized in Fig. 2 whereas its protein participants are listed in Table 1.

As expected from good science, studies discussed in this review posed new challenging questions regarding the molecular mechanisms underlying the ability of pollen tubes to undergo guided, polar, and rapid elongation. Future studies will need to address, for example, a relatively unusual situation when multiple members of a protein family expressed in the same cell, i.e., pollen-expressed PME, fulfill apparently non-redundant functions, and how these enzymatic activities are regulated to allow directional growth of the pollen tube. Also, the fascinating ability of pollen cells to maintain tip-focused gradients of secondary messengers needs to be understood, and the interrelationships and cross-talk between these signaling systems unraveled.

The complexity of the cellular systems utilized by the pollen for its tube growth is just beginning to emerge; for example, recent studies suggest involvement of ubiquitination pathways (Huang et al., 2006) and calcium-regulated phosphorylation/dephosphorylation cycles (Yoon et al., 2006). Solving the intricate mechanisms of the pollen tube elongation will unravel principles that govern cell expansion and directionality of cell growth, significantly impacting and advancing many other fields of biological research, such as physiology of polarized neuronal cells.

Acknowledgments

We thank the anonymous reviewers for the constructive suggestions and ideas which we adopted in the manuscript. We apologize to the colleagues whose works have not been cited due to the lack of space. Our laboratory is supported by grants from NIH, NSF, NRI/USDA, BSF, and BARD to V.C.

References

- Allan, V.J., Schroer, T.A., 1999. Membrane motors. *Curr. Opin. Cell Biol.* 11, 476–482.
- Anderhag, P., Hepler, P.K., Lazzaro, M.D., 2000. Microtubules and microfilaments are both responsible for pollen tube elongation in the conifer *Picea abies* (Norway spruce). *Protoplasmatologia* 214, 141–157.
- Armstrong, J., 2000. How do Rab proteins function in membrane traffic? *Int. J. Biochem. Cell Biol.* 32, 303–307.
- Assmann, S.M., 1995. Cyclic AMP as a second messenger in higher plants. *Plant Physiol.* 108, 885–889.
- Åström, H., Sorri, O., Raudaskoski, M., 1995. Role of microtubules in the movement of the vegetative nucleus and generative cell in tobacco pollen tubes. *Sex. Plant Reprod.* 8, 61–69.
- Balestrieri, C., Castaldo, D., Giovane, A., Quagliuolo, L., Servillo, L., 1990. A glycoprotein inhibitor of pectin methylesterase in kiwi fruit (*Actinidia chinensis*). *Eur. J. Biochem.* 193, 183–187.

- Barnabas, B., Fridvalsky, L., 1984. Adhesion and germination of differently treated maize pollen grains on the stigma. *Acta Bot. Hung.* 30, 329–332.
- Barton, N.R., Goldstein, L.S., 1996. Going mobile: microtubule motors and chromosome segregation. *Proc. Natl. Acad. Sci. U. S. A.* 93, 1735–1742.
- Batley, N.H., James, N.C., Greenland, A.J., Brownlee, C., 1999. Exocytosis and endocytosis. *Plant Cell* 11, 643–659.
- Bedinger, P., 1992. The remarkable biology of pollen. *Plant Cell* 4, 879–887.
- Bolwell, G.P., 1995. Cyclic AMP, the reluctant messenger in plants. *Trends Biochem. Sci.* 20, 492–495.
- Bordenave, M., 1996. Analysis of pectin methyl esterases. In: Linskens, H.F., Jackson, J.F. (Eds.), *Plant Cell Wall Analysis*, vol. 17. Springer-Verlag, Berlin, pp. 165–180.
- Bosch, M., Hepler, P.K., 2005. Pectin methylesterases and pectin dynamics in pollen tubes. *Plant Cell* 17, 3219–3226.
- Bosch, M., Cheung, A.Y., Hepler, P.K., 2005. Pectin methylesterase, a regulator of pollen tube growth. *Plant Physiol.* 138, 1334–1346.
- Bruce, J.I.E., Shuttleworth, T.J., Giovanucci, D.R., Yule, D.I., 2002. Phosphorylation of inositol 1,4,5-trisphosphate receptors in parotid acinar cells. A mechanism for the synergistic effects of cAMP on Ca²⁺ signalling. *J. Biol. Chem.* 277, 1340–1348.
- Cai, G., Bartalesi, A., Del Casino, C., Moscatelli, A., Tiezzi, A., Cresti, M., 1993. The kinesin-immunoreactive homologue from *Nicotiana tabacum* pollen tube: biochemical properties and subcellular localization. *Planta* 191, 496–506.
- Cai, G., Del Casino, C., Cresti, M., 2000a. Cytoskeletal basis of organelle trafficking in the angiosperm pollen tube. *Ann. Bot.* 85, 69–78.
- Cai, G., Romagnoli, S., Moscatelli, A., Ovidi, E., Gambellini, G., Tiezzi, A., Cresti, M., 2000b. Identification and characterization of a novel microtubule-based motor associated with membranous organelles in tobacco pollen tubes. *Plant Cell* 12, 1719–1736.
- Camardella, L., Carratore, V., Ciardiello, M.A., Servillo, L., Balestrieri, C., Giovane, A., 2000. Kiwi protein inhibitor of pectin methylesterase amino acid sequence and structural importance of two disulfide bridges. *Eur. J. Biochem.* 267, 4561–4565.
- Cárdenas, L., Lovy-Wheeler, A., Wilsen, K.L., Hepler, P.K., 2005. Actin polymerization promotes the reversal of streaming in the apex of pollen tubes. *Cell Motil. Cytoskeleton* 61, 112–127.
- Carroll, A.D., Moyon, C., Van kesteren, P., Tooke, F., Batley, N.H., Brownlee, C., 1998. Ca²⁺, annexins, and GTP modulate exocytosis from maize root cap protoplasts. *Plant Cell* 10, 1267–1276.
- Catoire, L., Pierron, M., Morvan, C., du Penhoat, C.H., Goldberg, R., 1998. Investigation of the action patterns of pectinmethylesterase isoforms through kinetic analyses and NMR spectroscopy. Implications in cell wall expansion. *J. Biol. Chem.* 273, 33150–33156.
- Chen, M.H., Citovsky, V., 2003. Systemic movement of a tobamovirus requires host cell pectin methylesterase. *Plant J.* 35, 386–392.
- Chen, M.H., Sheng, J., Hind, G., Handa, A., Citovsky, V., 2000. Interaction between the tobacco mosaic virus movement protein and host cell pectin methylesterases is required for viral cell-to-cell movement. *EMBO J.* 19, 913–920.
- Chen, C.Y., Wong, E.I., Vidali, L., Estavillo, A., Hepler, P.K., Wu, H.M., Cheung, A.Y., 2002. The regulation of actin organization by actin-depolymerizing factor in elongating pollen tubes. *Plant Cell* 14, 2175–2190.
- Chen, C.Y., Cheung, A.Y., Wu, H.M., 2003. Actin-depolymerizing factor mediates Rac/Rop GTPase-regulated pollen tube growth. *Plant Cell* 15, 237–249.
- Cheung, A.Y., Wang, H., Wu, H.M., 1995. A floral transmitting tissue-specific glycoprotein attracts pollen tubes and stimulates their growth. *Cell* 11, 383–393.
- Cheung, A.Y., Chen, C.Y., Glaven, R.H., de Graaf, B.H., Vidali, L., Hepler, P.K., Wu, H.M., 2002. Rab2 GTPase regulates vesicle trafficking between the endoplasmic reticulum and the Golgi bodies and is important to pollen tube growth. *Plant Cell* 14, 945–962.
- Cheung, A.Y., Chen, C.Y., Tao, L., Andreyeva, T., Twell, D., Wu, H.M., 2003. Regulation of pollen tube growth by Rac-like GTPases. *J. Exp. Bot.* 54, 73–81.
- Cole, R.A., Fowler, J.E., 2006. Polarized growth: maintaining focus on the tip. *Curr. Opin. Plant Biol.* 9, 579–588.
- Cremona, O., Di Paolo, G., Wenk, M.R., Luthi, A., Kim, W.T., Takei, K., Daniell, L., Nemoto, Y., Shears, S.B., Flavell, R.A., McCormick, D.A., De Camilli, P., 1999. Essential role of phosphoinositide metabolism in synaptic vesicle recycling. *Cell* 99, 179–188.
- de Graaf, B.H., Cheung, A.Y., Andreyeva, T., Lévassieur, K., Kieliszewski, M., Wu, H.M., 2005. Rab11 GTPase-regulated membrane trafficking is crucial for tip-focused pollen tube growth in tobacco. *Plant Cell* 17, 2564–2579.
- Derksen, J., Rutten, T., Lichtscheidl, I.K., de Win, A.H.N., Pierson, E.S., Rongen, G., 1995. Quantitative analysis of the distribution of organelles in tobacco pollen tubes: implications for exocytosis and endocytosis. *Protoplasmatologia* 188, 267–276.
- Dorokhov, Y.L., Makinen, K., Frolova, O.Y., Merits, A., Saarinen, J., Kalkinen, N., Atabekov, J.G., Saarna, M., 1999. A novel function for a ubiquitous plant enzyme pectin methylesterase: the host-cell receptor for the tobacco mosaic virus movement protein. *FEBS Lett.* 461, 223–228.
- Dorokhov, Y.L., Skurat, E.V., Frolova, O.Y., Gasanova, T.V., Ivanov, P.A., Ravin, N.V., Skryabin, K.G., Makinen, K.M., Klimyuk, V.I., Gleba, Y.Y., Atabekov, J.G., 2006. Role of the leader sequence in tobacco pectin methylesterase secretion. *FEBS Lett.* 580, 3329–3334.
- Dowd, P.E., Coursol, S., Skirpan, A.L., Kao, T.H., Gilroy, S., 2006. *Petunia* phospholipase C1 is involved in pollen tube growth. *Plant Cell* 18, 1438–1453.
- Dutta, R., Robinson, K.R., 2004. Identification and characterization of stretch-activated ion channels in pollen protoplasts. *Plant Physiol.* 135, 1398–1406.
- Feijo, J.A., Sainhas, J., Holdaway-Clarke, T.L., Cordeiro, M.S., Kunkel, J.G., Hepler, P.K., 2001. Cellular oscillations and the regulation of growth: the pollen tube paradigm. *BioEssays* 23, 86–94.
- Ferguson, C., Teeri, T.T., Siika, A.M., Read, S.M., Bacic, A., 1998. Location of cellulose and callose in pollen tubes and grains of *Nicotiana tabacum*. *Planta* 206, 452–460.
- Folkers, U., Berger, J., Hülskamp, M., 1997. Cell morphogenesis of trichomes in *Arabidopsis*: differential control of primary and secondary branching by branch initiation regulators and cell growth. *Development* 124, 3779–3786.
- Fu, Y., Wu, G., Yang, Z., 2001. Rop GTPase-dependent dynamics of tip-localized F-actin controls tip growth in pollen tubes. *J. Cell Biol.* 152, 1019–1032.
- Geitmana, A., Snowman, B.N., Emons, A.M.C., Franklin-Tong, V.E., 2000. Alterations in the actin cytoskeleton of pollen tubes are induced by the self-incompatibility reaction in *Papaver rhoeas*. *Plant Cell* 12, 1329–1351.
- Gibbon, B.C., Kovar, D.R., Staiger, C.J., 1999. Latrunculin B has different effects on pollen germination and tube growth. *Plant Cell* 11, 2349–2363.
- Giovane, A., Balestrieri, C., Quagliuolo, L., Castaldo, D., Servillo, L., 1995. A glycoprotein inhibitor of pectin methylesterase in kiwi fruit. Purification by affinity chromatography and evidence of a ripening-related precursor. *Eur. J. Biochem.* 233, 926–929.
- Goubet, F., Misrahi, A., Park, S.K., Zhang, Z., Twell, D., Dupree, P., 2003. AtCSLA7, a cellulose synthase-like putative glycosyltransferase, is important for pollen tube growth and embryogenesis in *Arabidopsis*. *Plant Physiol.* 131, 547–557.
- Gourmier, H., Stenmark, H., Rybin, V., Lippe, R., Zerial, M., 1998. Two distinct effectors of the small GTPase Rab5 cooperate in endocytic membrane fusion. *EMBO J.* 17, 1930–1940.
- Gu, Y., Vernoud, V., Fu, Y., Yang, Z., 2003. ROP GTPase regulation of pollen tube growth through the dynamics of tip-localized F-actin. *J. Exp. Bot.* 54, 93–101.
- Gu, Y., Wang, Z., Yang, Z., 2004. ROP/RAC GTPase: an old new master regulator for plant signaling. *Curr. Opin. Plant Biol.* 7, 527–536.
- Haizel, T., Merkle, T., Turck, F., Nagy, F., 1995. Characterization of membrane-bound small GTP-binding proteins from *Nicotiana tabacum*. *Plant Physiol.* 108, 59–67.
- Hazen, S.P., Scott-Craig, J.S., Walton, J.D., 2002. Cellulose synthase-like genes of rice. *Plant Physiol.* 128, 336–340.
- Henrissat, B., Davies, G.J., 2000. Glycoside hydrolases and glycosyltransferases. Families, modules, and implications for genomics. *Plant Physiol.* 124, 1515–1519.
- Hepler, P.K., Vidali, L., Cheung, A.Y., 2001. Polarized cell growth in higher plants. *Annu. Rev. Cell Dev. Biol.* 17, 159–187.

- Heslop-Harrison, J., Heslop-Harrison, Y., 1989. Myosin associated with the surface of organelles, vegetative nuclei and generative cells in angiosperm pollen grains and tubes. *J. Cell Sci.* 94, 319–325.
- Heslop-Harrison, J., Heslop-Harrison, Y., Cresti, M., Tiezzi, A., Moscatelli, A., 1988. Cytoskeletal elements, cell shaping and movement in the angiosperm pollen tube. *J. Cell Sci.* 91, 49–60.
- Higashiyama, T., Kuroiwa, H., Kuroiwa, T., 2003. Pollen-tube guidance: beacons from the female gametophyte. *Curr. Opin. Plant Biol.* 6, 36–41.
- Hirokawa, N., 1998. Kinesin and dynein superfamily proteins and the mechanism of organelle transport. *Science* 279, 519–526.
- Holdaway-Clarke, T.L., Hepler, P.K., 2003. Control of pollen tube growth: role of ion gradients and fluxes. *New Phytol.* 159, 539–563.
- Holdaway-Clarke, T.L., Feijo, J.A., Hackett, G.A., Kunkel, J.G., Hepler, P.K., 1997. Pollen tube growth and the intracellular-cytosolic calcium gradient oscillate in phase while extracellular calcium influx is delayed. *Plant Cell* 9, 1999–2010.
- Holzbaun, E.L.F., Vallee, R.B., 1994. Dyneins: molecular structure and cellular function. *Annu. Rev. Cell Biol.* 10, 339–372.
- Hoyt, M.A., 1994. Cellular roles of kinesin and related proteins. *Curr. Opin. Cell Biol.* 6, 63–68.
- Huang, J., Chen, F., Del Casino, C., Autino, A., Shen, M., Yuan, S., Peng, J., Shi, H., Wang, C., Cresti, M., Li, Y., 2006. An ankyrin repeat-containing protein, characterized as a ubiquitin ligase, is closely associated with membrane-enclosed organelles and required for pollen germination and pollen tube growth in lily. *Plant Physiol.* 140, 1374–1383.
- Jiang, L., Yang, S.L., Xie, L.F., Puah, C.S., Zhang, X.Q., Yang, W.C., Sundaresan, V., Ye, D., 2005. VANGUARD1 encodes a pectin methyltransferase that enhances pollen tube growth in the *Arabidopsis* style and transmitting tract. *Plant Cell* 17, 584–596.
- Johnson, M.A., Preuss, D., 2002. Plotting a course: multiple signals guide pollen tubes to their targets. *Dev. Cell.* 2, 273–281.
- Joos, U., van Aken, J., Kristen, U., 1994. Microtubules are involved in maintaining the cellular polarity in pollen tubes of *Nicotiana sylvestris*. *Protoplasmatologia* 179, 5–15.
- Kim, S., Mollet, J.C., Dong, J., Zhang, K., Park, S.Y., Lord, E.M., 2003. Chemocyanin, a small, basic protein from the lily stigma, induces pollen tube chemotropism. *Proc. Natl. Acad. Sci. U. S. A.* 100, 16125–16130.
- King, S.M., 2000. The dynein microtubular motor. *Biochim. Biophys. Acta* 1496, 60–75.
- King, S.M., 2002. Dyneins motor on in plants. *Traffic* 3, 930–931.
- Kohno, T., Chaen, S., Shimmen, T., 1990. Characterization of the translocator associated with pollen tube organelles. *Protoplasmatologia* 154, 179–183.
- Kost, B., Lemichez, E., Spielhofer, P., Hong, Y., Tolia, K., Carpenter, C., Chua, N.H., 1999. Rac homologues and compartmentalized phosphatidylinositol 4,5-bisphosphate act in a common pathway to regulate polar pollen tube growth. *J. Cell Biol.* 145, 317–330.
- Krishnakumar, S., Oppenheimer, D.G., 1999. Extragenic suppressors of the *Arabidopsis zwi-3* mutation identify new genes that function in trichome branch formation and pollen tube growth. *Development* 126, 3079–3088.
- Kuhn, T.B., Meberg, P.J., Brown, M.D., Bernstein, B.W., Minamide, L.S., Jensen, J.R., Okada, K., Soda, E.A., Bamberg, J.R., 2000. Regulating actin dynamics in neuronal growth cones by ADF/cofilin and rho family GTPases. *J. Neurobiol.* 44, 126–144.
- Laitinen, R., Nieminen, K.M., Vihinen, E., Raudaskoski, M., 2002. Movement of generative cell and vegetative nucleus in tobacco pollen tubes is dependent on microtubule cytoskeleton but independent of the synthesis of callose plugs. *Sex. Plant Reprod.* 15, 195–204.
- Lancelle, S.A., Hepler, P.K., 1992. Ultrastructure of the cytoskeleton in freeze substituted pollen tubes of *Nicotiana glauca*. *Protoplasma* 140, 141–150.
- LeDizet, M., Piperno, G., 1995a. ida4-1, ida4-2, and ida4-3 are intron splicing mutations affecting the locus encoding p28, a light chain of *Chlamydomonas* axonemal inner dynein arms. *Mol. Biol. Cell* 6, 713–723.
- LeDizet, M., Piperno, G., 1995b. The light chain p28 associates with a subset of inner dynein arm heavy chains in *Chlamydomonas* axonemes. *Mol. Biol. Cell* 6, 697–711.
- Li, Y.Q., Faleri, C., Geitmann, A., Zhang, H.Q., Cresti, M., 1995. Immunogold localization of arabinogalactan proteins, unesterified and esterified pectins in pollen grains and pollen tubes of *Nicotiana tabacum* L. *Protoplasmatologia* 189, 26–36.
- Li, Y.Q., Zhang, H.Q., Pierson, E.S., Huang, F.Y., Linskens, H.F., Hepler, P.K., Cresti, M., 1996. Enforced growth-rate fluctuation causes pectin ring formation in the cell wall of *Lilium longiflorum* pollen tubes. *Planta* 200, 41–49.
- Li, H., Wu, G., Ware, D., Davis, K.R., Yang, Z., 1998. *Arabidopsis* Rho-related GTPases: differential gene expression in pollen and polar localization in fission yeast. *Plant Physiol.* 118, 407–417.
- Li, H., Lin, Y., Heath, R.M., Zhu, M.X., Yang, Z., 1999. Control of pollen tube tip growth by a Rop GTPase-dependent pathway that leads to tip-localized calcium influx. *Plant Cell* 11, 1731–1742.
- Liu, G.Q., Cai, G., Del Casino, C., Tiezzi, A., Cresti, M., 1994. Kinesin-related polypeptide is associated with vesicles from *Corylus avellana* pollen. *Cell Motil. Cytoskeleton.* 29, 155–166.
- Lord, E.M., Russell, S.D., 2002. The mechanisms of pollination and fertilization in plants. *Annu. Rev. Cell Dev. Biol.* 18, 81–105.
- Malhó, R., 1998. The role of inositol(1,4,5)triphosphate in pollen tube growth and orientation. *Sex. Plant Reprod.* 11, 231–235.
- Malhó, R., Trewavas, A.J., 1996. Localized apical increases of cytosolic free calcium control pollen tube orientation. *Plant Cell* 8, 1935–1949.
- Malhó, R., Read, N.D., Pais, M., Trewavas, A.J., 1994. Role of cytosolic calcium in the reorientation of pollen tube growth. *Plant J.* 5, 331–341.
- Malhó, R., Camacho, L., Moutinho, A., 2000. Signalling pathways in pollen tube growth and reorientation. *Ann. Bot.* 85 (Suppl. A), 59–68.
- Markovic, O., Jornvall, H., 1986. Pectinesterase. The primary structure of the tomato enzyme. *Eur. J. Biochem.* 158, 455–462.
- Markovic, O., Jornvall, H., 1992. Disulfide bridges in tomato pectinesterase: variations from pectinesterases of other species; conservation of possible active site segments. *Protein Sci.* 1, 1288–1292.
- Martin, T.F.J., 1998. Phosphoinositide lipids as signaling molecules: common themes for signal transduction, cytoskeletal regulation, and membrane trafficking. *Annu. Rev. Cell Dev. Biol.* 14, 231–264.
- Mascarenhas, J.P., 1993. Molecular mechanisms of pollen tube growth and differentiation. *Plant Cell* 5, 1303–1314.
- McCormick, S., Yang, H., 2005. Is there more than one way to attract a pollen tube? *Trends Plant Sci.* 10, 260–263.
- Meier, I., 2005. Nucleocytoplasmic trafficking in plant cells. *Int. Rev. Cytol.* 244, 95–135.
- Micheli, F., 2001. Pectin methyltransferases: cell wall enzymes with important roles in plant physiology. *Trends Plant Sci.* 6, 414–419.
- Miller, D.D., Callahan, D.A., Gross, D.J., Hepler, P.K., 1992. Free Ca^{2+} gradient in growing pollen tubes of *Lilium*. *J. Cell Sci.* 101, 7–12.
- Miller, D.D., de Ruijter, N.C.A., Bisseling, T., Emons, A.M.C., 1999. The role of actin in root hair morphogenesis: studies with lipochitoooligosaccharide as a growth stimulator and cytochalasin as an actin perturbing drug. *Plant J.* 17, 141–154.
- Molendijk, A.J., Ruperti, B., Palme, K., 2004. Small GTPases in vesicle trafficking. *Curr. Opin. Plant Biol.* 7, 694–700.
- Monteiro, D., Liu, Q., Lisboa, S., Scherer, G.E., Quader, H., Malhó, R., 2005. Phosphoinositides and phosphatidic acid regulate pollen tube growth and reorientation through modulation of $[Ca^{2+}]_c$ and membrane secretion. *J. Exp. Bot.* 56, 1665–1674.
- Moscatelli, A., Del Casino, C., Lozzi, L., Scali, M., Cai, G., Tiezzi, A., Cresti, M., 1995. High molecular weight polypeptides related to dynein heavy chains in *Nicotiana tabacum* pollen tubes. *J. Cell Sci.* 108, 1117–1125.
- Moscatelli, A., Cai, G., Ciampolini, F., Cristini, M., 1998. Dynein heavy chain-related polypeptides are associated with organelles in pollen tubes of *Nicotiana tabacum*. *Sex. Plant Reprod.* 11, 31–40.
- Moscatelli, A., Scali, M., Vignani, R., Onelli, E., Cresti, M., 2003. Dynein heavy chain (DHC)-related polypeptides during pollen tube growth. *Cell Biol. Int.* 27, 237–238.
- Moustacas, A.M., Nari, J., Borel, M., Noat, G., Ricard, J., 1991. Pectin methyltransferase, metal ions and plant cell-wall extension. The role of metal ions in plant cell-wall extension. *Biochem. J.* 279, 351–354.
- Moutinho, A., Hussey, P.J., Trewavas, A.J., Malhó, R., 2001. cAMP acts as a second messenger in pollen tube growth and reorientation. *Proc. Natl. Acad. Sci. U. S. A.* 98, 10481–10486.

- Munnik, T., 2001. Phosphatidic acid: an emerging plant lipid second messenger. *Trends Plant Sci.* 6, 227–233.
- Muschietti, J., Eyal, Y., McCormick, S., 1998. Pollen tube localization implies a role in pollen–pistil interactions for tomato receptor-like protein kinases LePRK1 and LePRK2. *Plant Cell* 10, 319–330.
- Naim, C.J., Lewandowski, D.J., Burns, J.K., 1998. Genetics and expression of two pectinesterase genes in Valencia orange. *Physiol. Plant.* 102, 226–235.
- Narasimhulu, S.B., Kao, Y.L., Reddy, A.S.N., 1997. Interaction of *Arabidopsis* kinesin-like calmodulin-binding protein with tubulin subunits: modulation by Ca^{2+} -calmodulin. *Plant J.* 12, 1139–1149.
- O'Driscoll, D., Hann, C., Read, S.M., Steer, M.W., 1993. Endocytotic uptake of fluorescent dextrans by pollen tubes grown in vitro. *Protoplasmatologia* 175, 126–130.
- Obermeyer, G., Weisenseel, M.H., 1991. Calcium channel blocker and calmodulin antagonists affect the gradient of free calcium ions in lily pollen tubes. *Eur. J. Cell Biol.* 56, 319–332.
- Ohsako, S., Deguchi, T., 1981. Stimulation by phosphatidic acid of calcium influx and cyclic GMP synthesis in neuroblastoma cells. *J. Biol. Chem.* 256, 10945–10948.
- Olkkonen, V.M., Stenmark, H., 1997. Role of Rab GTPases in membrane traffic. *Int. Rev. Cytol.* 176, 1–85.
- Oppenheimer, D.G., Pollock, M.A., Vacik, J., Szymanski, D.B., Ericson, B., Feldmann, K., Marks, M.D., 1997. Essential role of a kinesin-like protein in *Arabidopsis* trichome morphogenesis. *Proc. Natl. Acad. Sci. U. S. A.* 94, 6261–6266.
- Palanivelu, R., Preuss, D., 2000. Pollen tube targeting and axon guidance: parallels in tip growth mechanisms. *Trends Cell Biol.* 10, 517–524.
- Palanivelu, R., Brass, L., Edlund, A.F., Preuss, D., 2003. Pollen tube growth and guidance is regulated by POP2, an *Arabidopsis* gene that controls GABA levels. *Cell* 114, 47–59.
- Pear, J.R., Kawagoe, Y., Schreckengost, W.E., Delmer, D.P., Stalker, D.M., 1996. Higher plants contain homologs of the bacterial CELA genes encoding the catalytic subunit of cellulose synthase. *Proc. Natl. Acad. Sci. U. S. A.* 93, 12637–12642.
- Pereira-Leal, J.B., Seabra, M.C., 2001. Evolution of the Rab family of small GTP-binding proteins. *J. Mol. Biol.* 313, 889–901.
- Pfeffer, S., Aivazian, D., 2004. Targeting Rab GTPases to distinct membrane compartments. *Nat. Rev., Mol. Cell Biol.* 5, 886–896.
- Picton, J.M., Steer, M.W., 1983. Membrane recycling and the control of secretory activity in pollen tubes. *J. Cell Sci.* 63, 303–310.
- Pierson, E.S., Miller, D.D., Callahan, D.A., Shipley, A.M., Rivers, B.A., Cresti, M., Hepler, P.K., 1994. Pollen tube growth is coupled to the extracellular calcium ion flux and the intracellular calcium gradient: effect of BAPTA-type buffers and hypertonic media. *Plant Cell* 6, 1815–1828.
- Pierson, E.S., Miller, D., Callahan, D., Van Aken, J., Hackett, G., Hepler, P.K., 1996. Tip-localized calcium entry fluctuates during pollen tube growth. *Dev. Biol.* 174, 160–173.
- Pina, C., Pinto, F., Feijo, J.A., Becker, J.D., 2005. Gene family analysis of the *Arabidopsis* pollen transcriptome reveals biological implications for cell growth, division control, and gene expression regulation. *Plant Physiol.* 138, 744–756.
- Powner, D.J., Wakelam, M.J.O., 2002. The regulation of phospholipase D by inositol phospholipids and small GTPases. *FEBS Lett.* 531, 62–64.
- Pressey, R., 1984. Role of pectinesterase in pH-dependent interactions between pea cell wall polymers. *Plant Physiol.* 76, 547–549.
- Rathore, K.S., Cork, R.J., Robinson, K.R., 1991. A cytoplasmic gradient of Ca^{2+} is correlated with the growth of lily pollen tubes. *Dev. Biol.* 148, 612–619.
- Rato, C., Monteiro, D., Hepler, P.K., Malhó, R., 2004. Calmodulin activity and cAMP signalling modulate growth and apical secretion in pollen tubes. *Plant J.* 38, 887–897.
- Ray, S.M., Park, S.S., Ray, A., 1997. Pollen tube guidance by the female gametophyte. *Development* 124, 2489–2498.
- Reddy, A.S.N., Safadi, F., Narasimhulu, S.B., Golovkin, M., Hu, X., 1996. A novel plant calmodulin-binding protein with a kinesin heavy chain motor domain. *J. Biol. Chem.* 271, 7052–7060.
- Ren, C., Kermod, A.R., 2000. An increase in pectin methyl esterase activity accompanies dormancy breakage and germination of yellow cedar seeds. *Plant Physiol.* 124, 231–242.
- Richmond, T.A., Somerville, C., 2000. The cellulose synthase superfamily. *Plant Physiol.* 124, 495–498.
- Romagnoli, S., Cai, G., Cresti, M., 2003a. *In vitro* assays demonstrate that pollen tube organelles use kinesin-related motor proteins to move along microtubules. *Plant Cell* 15, 251–269.
- Romagnoli, S., Cai, G., Cresti, M., 2003b. Kinesin-like proteins and transport of pollen tube organelles. *Cell Biol. Int.* 27, 255–256.
- Rutherford, S., Moore, I., 2002. The *Arabidopsis* Rab GTPase family: another enigma variation. *Curr. Opin. Plant Biol.* 5, 518–528.
- Sanderfoot, A.A., Raikhel, N.V., 1999. The specificity of vesicle trafficking: coat proteins and SNAREs. *Plant Cell* 11, 629–641.
- Saxena, I.M., Brown Jr., M.R., 2000. Cellulose synthases and related enzymes. *Curr. Opin. Plant Biol.* 3, 523–531.
- Schimmoller, F., Simon, I., Pfeffer, S.R., 1998. Rab GTPases, directors of vesicle docking. *J. Biol. Chem.* 273, 22161–22164.
- Seabra, M.C., Wasmeier, C., 2004. Controlling the location and activation of Rab GTPases. *Curr. Opin. Cell Biol.* 16, 451–457.
- Shimizu, K.K., Okada, K., 2000. Attractive and repulsive interactions between female and male gametophytes in *Arabidopsis* pollen tube guidance. *Development* 127, 4511–4518.
- Song, H., Golovkin, M., Reddy, A.S.N., Endow, S.A., 1997. *In vitro* motility of AtKCBP, a calmodulin-binding kinesin protein of *Arabidopsis*. *Proc. Natl. Acad. Sci. U. S. A.* 94, 322–327.
- Stachelin, L.A., Moore, I., 1995. The plant Golgi apparatus: structure, functional organization and trafficking mechanisms. *Annu. Rev. Plant Physiol. Plant Mol. Biol.* 46, 261–288.
- Steer, M.W., Steer, J.M., 1989. Pollen tube tip growth. *New Phytol.* 111, 323–358.
- Steggerda, S.M., Paschal, B.M., 2002. Regulation of nuclear import and export by the GTPase Ran. *Int. Rev. Cytol.* 217, 41–91.
- Stenmark, H., Olkkonen, V.M., 2001. The Rab GTPase family. *Genome Biol.* 2, 3007.1–3007.7.
- Sterling, J.D., Quigley, H.F., Orellana, A., Mohnen, D., 2001. The catalytic site of the pectin biosynthetic enzyme alpha-1,4-galacturonosyltransferase is located in the lumen of the Golgi. *Plant Physiol.* 127, 360–371.
- Stevenson, J.M., Perera, I.Y., Heilmann, I., Persson, S., Boss, W.F., 2000. Inositol signaling and plant growth. *Trends Plant Sci.* 5, 252–258.
- Susalka, S.J., Hancock, W.O., Pfister, K.K., 2000. Distinct cytoplasmic dynein complexes are transported by different mechanisms in axons. *Biochim. Biophys. Acta.* 1496, 76–88.
- Tamm, L.K., Crane, J., Kiessling, V., 2003. Membrane fusion: a structural perspective on the interplay of lipids and proteins. *Curr. Opin. Struct. Biol.* 13, 453–466.
- Tang, X., Hepler, P.K., Scordilis, S.P., 1989a. Immunochemical and immunocytochemical identification of a myosin chain polypeptide in *Nicotiana* pollen tubes. *J. Cell Sci.* 92, 569–574.
- Tang, X., Lancelle, S.A., Hepler, P.K., 1989b. Fluorescence microscopic localization of actin in pollen tubes: comparison of actin antibody and phalloidin staining. *Cell Motil. Cytoskeleton.* 12, 216–224.
- Taylor, L.P., Hepler, P.K., 1997. Pollen germination and tube growth. *Annu. Rev. Plant Physiol. Plant Mol. Biol.* 48, 461–491.
- The *Arabidopsis* Genome Initiative, 2000. Analysis of the genome sequence of the flowering plant *Arabidopsis thaliana*. *Nature* 408, 796–815.
- Tian, G.W., Mohanty, A., Chary, S.N., Li, S., Paap, B., Drakakaki, G., Kopeck, C.D., Li, J., Ehrhardt, D., Jackson, D., Rhee, S., Raikhel, N.V., Citovsky, V., 2004. High-throughput fluorescent tagging of full-length *Arabidopsis* gene products in plants. *Plant Physiol.* 135, 25–38.
- Tian, G.W., Chen, M.H., Zaltsman, A., Citovsky, V., 2006. A pollen-specific pectin methylesterase involved in pollen tube growth. *Dev. Biol.* 294, 83–91.
- Tiezzi, A., Moscatelli, A., Cai, G., Bartalesi, A., Cresti, M., 1992. An immunoreactive homolog of mammalian kinesin in *Nicotiana tabacum* pollen tubes. *Cell Motil. Cytoskeleton.* 21, 132–137.
- Vernoud, V., Horton, A.C., Yang, Z., Nielsen, E., 2003. Analysis of the small GTPase gene superfamily of *Arabidopsis*. *Plant Physiol.* 131, 1191–1208.
- Vidal, L., Hepler, P.K., 2001. Actin and pollen tube growth. *Protoplasmatologia* 215, 64–76.

- Vidali, L., McKenna, S.T., Hepler, P.K., 2001. Actin polymerization is essential for pollen tube growth. *Mol. Biol. Cell* 12, 2534–2545.
- Vitale, A., Denecke, J., 1999. The endoplasmic reticulum-gateway of the secretory pathway. *Plant Cell* 11, 615–628.
- Wen, F., Zhu, Y., Hawes, M.C., 1999. Effect of pectin methylesterase gene expression on pea root development. *Plant Cell* 11, 1129–1140.
- Winge, P., Brembu, T., Kristensen, R., Bones, A.M., 2000. Genetic structure and evolution of RAC-GTPases in *Arabidopsis thaliana*. *Genetics* 156, 1959–1971.
- Yoon, G.M., Dowd, P.E., Gilroy, S., McCubbin, A.G., 2006. Calcium-dependent protein kinase isoforms in *Petunia* have distinct functions in pollen tube growth, including regulating polarity. *Plant Cell* 18, 867–878.
- Zerial, M., McBride, H., 2001. Rab proteins as membrane organizers. *Nat. Rev., Mol. Cell Biol.* 2, 107–117.
- Zheng, Z.L., Yang, Z., 2000a. The Rop GTPase switch turns on polar growth in pollen. *Trends Plant Sci.* 5, 298–303.
- Zheng, Z.L., Yang, Z., 2000b. The Rop GTPase: an emerging signaling switch in plants. *Plant Mol. Biol.* 44, 1–9.