

Integrin $\alpha 6\beta 4$ Promotes Migration, Invasion through Tiam1 Upregulation, and Subsequent Rac Activation^{1,2}

Zobeida Cruz-Monserrate
and Kathleen L. O'Connor

Department of Surgery and the Sealy Center for Cancer Cell Biology, University of Texas Medical Branch, Galveston, TX 77555, USA

Abstract

The lethality of pancreatic adenocarcinoma stems from an elevated incidence of tumor cell invasion and metastasis that are mediated by mechanisms not yet understood. Recent studies indicate that the proinvasive integrin $\alpha 6\beta 4$ is highly upregulated in pancreatic adenocarcinomas. To assess the importance of this integrin in pancreatic cancer cell migration and invasion, cell lines were screened for integrin $\alpha 6\beta 4$ expression by immunoblotting and fluorescence-activated cell sorting and their ability to migrate and invade toward hepatocyte growth factor (HGF). We found that cell surface expression of the $\alpha 6\beta 4$ integrin correlated with the cells' ability to migrate and invade toward HGF. When cells expressing high levels of integrin $\alpha 6\beta 4$ were treated with small interfering RNA targeting $\alpha 6$ or $\beta 4$ integrin subunits, we observed a reduction in cell migration and invasion. Furthermore, the activity of the small GTPase Rac1 was stimulated by $\alpha 6\beta 4$ integrin expression and was necessary for HGF-stimulated chemotaxis. We discovered that expression of the Rac-specific nucleotide exchange factor, Tiam1 (T-lymphoma invasion and metastasis), was upregulated in cells overexpressing the integrin $\alpha 6\beta 4$ and required for the elevated Rac1 activity in these cells. We conclude that the integrin $\alpha 6\beta 4$ promotes the migratory and invasive phenotype of pancreatic carcinoma cells through the Tiam1-Rac1 pathway in part through the upregulation of Tiam1.

Neoplasia (2008) 10, 408–417

Introduction

Pancreatic adenocarcinoma is a highly invasive and metastatic cancer that has the highest mortality rate of all cancers for reasons that are not yet understood [1]. Integrins are involved in multiple aspects of tumor invasion and metastasis, making them good candidates to elucidate the basic mechanisms involved in the metastatic process [2,3]. Our group as well as others has shown that the proinvasive and prometastatic integrin $\alpha 6\beta 4$ is overexpressed in pancreatic adenocarcinomas [4–8] when compared to normal pancreas and chronic pancreatitis. Furthermore, this overexpression occurs at an early stage in pancreatic cancer progression [8]. The early and persistent upregulation of integrin $\alpha 6\beta 4$ suggests that it could actively contribute to pancreatic cancer progression.

Integrins regulate many cellular functions such as cell adhesion to the extracellular matrix and transmission of molecular cues from the outside microenvironment that can influence cell shape, survival, proliferation, gene transcription, protein translation, cell migration and invasion, and tumor development [2]. Their two type I transmembrane α and β subunits can associate in different combinations leading to the formation of at least 25 receptors [9]. The $\alpha 6\beta 4$ in-

tegrin is unique among integrins given that the $\beta 4$ subunit has a cytoplasmic domain that is 1000 amino acids longer than other integrins and it can only associate with the $\alpha 6$ integrin subunit [10]. The $\alpha 6\beta 4$ integrin is primarily expressed on the basal surface of most epithelia where it functions as an adhesion receptor to maintain epithelial structure and integrity through the anchoring of the epithelium to its underlying basement membrane through the formation of hemidesmosomes [11]. The $\alpha 6\beta 4$ integrin is elevated in several types

Abbreviations: FACS, fluorescence-activated cell sorting; GEF, guanine nucleotide exchange factor; HGF, hepatocyte growth factor; PI3-K, phosphoinositol-3-kinase; siRNA, small interfering RNA; Tiam1, T-lymphoma invasion and metastasis

Address all correspondence to: Kathleen L. O'Connor, PhD, Department of Surgery, University of Texas Medical Branch, 301 University Boulevard, Galveston, TX 77555-0525, USA. E-mail: kloconno@utmb.edu

¹This study was supported by National Institutes of Health, National Cancer Institute, grants R21 CA102125 and R01 CA109136 (K.L.O.) and F31 CA106201 (Z.C.M.).

²This article refers to supplementary materials, which are designated by Figures W1 and W2 and are available online at www.neoplasia.com.

Received 21 December 2007; Revised 18 February 2008; Accepted 25 February 2008

Copyright © 2008 Neoplasia Press, Inc. All rights reserved 1522-8002/08/\$25.00
DOI 10.1593/neo.07868

of carcinomas, with increased levels of expression correlating with a highly invasive and motile phenotype [12] as well as reduced patient survival [13]. However, the $\alpha 6\beta 4$ integrin has been suggested to have both tumor suppressing and tumor promoting roles. In the presence of a wild-type p53, the $\alpha 6\beta 4$ can promote apoptosis, but facilitates survival when p53 is mutant or absent [14]. Similarly, the suppressive effects of this integrin on tumor progression can be overcome by mutant K-Ras in a skin tumor model [15]. In squamous carcinomas, the $\alpha 6\beta 4$ integrin has been shown to be released from the hemidesmosomes and associate with the actin cytoskeleton after epidermal growth factor stimulation in a process that is dependent on protein kinase C α -mediated phosphorylation of serine residues in the integrin $\beta 4$ subunit [16]. Once released from hemidesmosomes, the $\alpha 6\beta 4$ integrin can cooperate and amplify signaling from multiple growth factor receptors to promote various aspects of tumor progression including cell proliferation, migration, invasion, and metastasis [2,12]. The ability of this integrin to signal synergistically with growth factor receptors, such as ErbB-2, ErbB-3 [17,18], and c-Met [19], has been implicated with an invasive phenotype through the activation of signaling intermediates, such as phosphoinositol-3-kinase (PI3-K) [20], Akt [21], and Rac1 [22]. Rac1 is a member of the Rho family of GTPases that regulates actin polymerization leading to the formation of membrane ruffles and lamellae. Rac1 is critical for the migration of most cell types [23] and acts downstream of the PI3-K pathway [24].

The involvement of the $\alpha 6\beta 4$ integrin in the invasive phenotype of multiple carcinomas and upregulation of this integrin in pancreatic adenocarcinomas prompted us to investigate *in vitro* how the $\alpha 6\beta 4$ integrin may contribute to pancreatic cancer cell migration and invasion. Therefore, the goals of this study were 1) to ascertain if the integrin $\alpha 6\beta 4$ contributes to the migration and invasion phenotype of pancreatic cancer cell lines and 2) to assess mechanisms governing the contributions of integrin $\alpha 6\beta 4$ to the migratory and invasive phenotype.

Materials and Methods

Cell Culture and Antibodies

MiaPaCa-2, Panc-1 (from American Type Culture Collection, ATCC), and Panc-1 subclones were cultured in Dulbecco's modified Eagle's medium (high glucose) with 10% Fetal Plex (Gemini Bio-Products, West Sacramento, CA), 1% l-glutamine, 1% penicillin, and 1% streptomycin (GIBCO BRL, Gaithersburg, MD). Suit-2 (obtained from Dr. Takeshi Iwamura, Miyazaki Medical College, Miyazaki, Japan), ASPC-1, and BXPC-3 (obtained from ATCC) cells were cultured in RPMI 1640 containing 10% Fetal Plex serum plus 1% l-glutamine, 1% penicillin, and 1% streptomycin. Cells were harvested using 0.05% trypsin-EDTA and washed three times with serum-free medium containing 250 μ g/ml heat-inactivated BSA (medium/BSA). The antibodies used include anti- $\beta 4$ integrin subunit 505 rabbit polyclonal (Arthur Mercurio, University of Massachusetts, Worcester, MA), 439-9B rat monoclonal (Chemicon, Temecula, CA), GoH3 rat monoclonal anti- $\alpha 6$ integrin subunit (Santa Cruz Biotechnologies, Santa Cruz, CA), C-28 rabbit polyclonal anti-c-Met (Santa Cruz Biotechnologies), purified mouse monoclonal anti-Rac1 antibody (BD Biosciences, San Jose, CA), rabbit polyclonal anti-Tiam1 antibody (Bethyl Laboratories, Montgomery, TX), MAB1864 rat monoclonal anti-tubulin (Chemicon), and AC-15 mouse monoclonal anti- β -actin (Sigma Aldrich, St. Louis, MO).

Immunoblotting

Cells were lysed with RIPA buffer (150 mM NaCl, 0.5 mM EGTA, 0.1% sodium deoxycholate, 0.1% SDS, 1% Triton X-100, 50 mM Tris-HCl, pH 7.4) containing 15 μ g/ml protease inhibitor cocktail (Sigma Aldrich) and 1 mM PMSF, resolved on a polyacrylamide gel, transferred to a nitrocellulose membrane, blocked, and probed with the indicated primary antibodies. Membranes were washed, incubated with appropriate horseradish peroxidase-conjugated secondary antibody and developed using the SuperSignal West Pico Chemiluminescent Substrate (Pierce Biotechnologies, Rockford, IL) or Immobilon Western Chemiluminescent HRP Substrate (Millipore, Billerica, MA).

Fluorescence-Activated Cell Sorting

Suspended cells were incubated with primary antibody or IgG only for 1 hour at 4°C and washed three times with 1 \times Dulbecco's PBS (pH 7.4) (Gibco, Carlsbad, CA) containing 250 μ g/ml heat inactivated BSA (Dulbecco's PBS/BSA). Cells were then incubated with Cy2-conjugated secondary antibody (Jackson ImmunoResearch, West Grove, PA) and analyzed on a FACS-Scan (Becton-Dickinson, Franklin Lakes, NJ). Relative fluorescence values from the IgG-only samples were subtracted from the samples treated with primary antibody.

Migration and Invasion Assays

The upper and bottom surface of Transwell membranes (6.5-mm diameter, 8- μ m pore size; Corning, Corning, NY) were coated with 15 μ g/ml of laminin-1 (Trevigen, Gaithersburg, MD) for 30 minutes at 37°C and then washed three times with medium/BSA for chemotaxis studies. For invasion assays, 7.3 μ g of Collagen I (Vitrogen/PureCol, Leimuiden, the Netherlands) was diluted in cold water and dried onto the upper surface of each Transwell chamber membrane. Matrix was reconstituted with medium without serum for 1 hour before use. Hepatocyte growth factor (HGF, 50 ng/ml, unless otherwise indicated; Peprotech, Rocky Hill, NJ) diluted in medium/BSA or medium/BSA alone was added to the bottom chamber. Cells (50,000) were added to the upper chamber and allowed to migrate for 4 hours or invade for 6 hours at 37°C. Nonmigrating or non-invading cells were removed with a cotton swab from the top chamber. Cells remaining in the bottom were fixed with 100% methanol, stained with 1% crystal violet in 2% ethanol, and quantified visually from four random fields from each membrane using bright-field optics. Values for triplicate membranes are reported as a mean number of cells per millimeter squared \pm the standard deviation of the mean.

RNA Extraction and Real-Time PCR

Total RNA was extracted from cells using Trizol reagent (Invitrogen, Carlsbad, CA). cDNA was synthesized using 5 μ g of RNA and the SuperScript III First-Strand Synthesis System (Invitrogen) as per the manufacturer's recommendations. Expression of T-lymphoma invasion and metastasis (Tiam1) was assessed by real-time PCR using available probes, reagents, and ABI7000 sequence detector as recommended by the manufacturer (Applied Biosystems, Foster City, CA). Real-time PCR was performed at the real-time PCR core facility, Sealy Center for Cancer Cell Biology, University of Texas Medical Branch. Duplicate C_T values were analyzed in Microsoft Excel using the comparative C_T ($\Delta\Delta C_T$) method as described by the manufacturer (Applied Biosystems). The amounts of targets ($2^{-\Delta\Delta C_T}$) were

obtained by normalizing to endogenous reference (18S) and relative to a calibrator (one of the experimental samples).

Small Interfering RNA Electroporation

Suspended cells (3×10^6) were electroporated with or without 200 nM of the indicated small interfering RNA (siRNA, 300 V, 500 μ F) with the Gene Pulser Xcell System (BioRad Laboratories, Hercules, CA) and then plated in normal growth medium. Cells were given fresh medium after 24 hours and harvested after 48 hours. Control nontargeting siRNA or siRNAs designed to target the integrin $\beta4$, integrin $\alpha6$, Rac1, and Tiam1 were SMARTPools from Dharmacon (Chicago, IL). For rescue experiments, cells were electroporated as described above, and 48 hours later, cells were transfected with 10 μ g of a human Tiam1 full-length construct (John Exton, Vanderbilt University, Nashville, TN) using 30 μ l Lipofectamine 2000 (Invitrogen). The following day, cells were assayed for migration and invasion.

Clone Selection

The parental Panc-1 cells were sorted for the integrin $\beta4$ subunit by fluorescence-activated cell sorting (FACS) analysis (Becton-Dickinson, Franklin Lakes, NJ). Cell populations with high and low integrin $\beta4$ expression were isolated and further subcloned by dilution cloning. Individual clones of the sorted population including Panc-1/2G6 low integrin $\beta4$ expresser; Panc-1/3D7, and Panc-1/ZCM high integrin $\beta4$ expressers were further identified. To isolate the Panc-1/ Δ cyt clone, parental Panc-1 cells were transfected with a mutated $\beta4$ cDNA that lacked the cytoplasmic domain with the exception of four amino acids distal to the transmembrane sequence ($\beta4$ - Δ cyt [25]) (Arthur Mercurio, University of Massachusetts), using Lipofectamine 2000 (Invitrogen), selected with Genecitin (2 mg/ml) (G418; Invitrogen) and colonies were screened for expression of $\beta4$ - Δ cyt. Expression of integrin $\beta4$ in cell lines and Panc-1 subclones were confirmed by immunoblotting and FACS analyses.

Rac Activity Assays

Cells (1×10^6) were plated on laminin-1 (15 μ g/ml, Trevigen)-coated plates in medium/BSA and allowed to attach and spread for 1 to 2 hours. Plated cells were then left untreated or treated with HGF (50 ng/ml) for 5 minutes, then harvested with Rac lysis buffer (50 mM Tris, pH 7.4, 100 mM NaCl, 1% Nonidet P-40, 10% glycerol, 2 mM $MgCl_2$, 15 μ g/ml protease inhibitor cocktail, and 1 mM PMSF) and analyzed for Rac activity as previously described [26]. Aliquots of total cell extracts and the eluents from the PBD beads were analyzed for bound Rac1 molecules by Western blotting analysis.

Statistical Analysis

All experiments were repeated at least three times and data were reported as mean \pm standard deviation. In each case, representative data are shown. The statistical significance of differences between groups was calculated using a two-tailed *t* test ($P < .05$ was taken as significant) with the Sigma Stat 2.03 software statistical program (Systat Software, Point Richmond, CA).

Results

Expression of Integrin $\alpha6\beta4$ Correlates with the Ability of Pancreatic Cancer Cell Lines to Chemotax toward HGF

Integrin $\alpha6\beta4$ expression is positively correlated with the invasive and migratory phenotype of several types of carcinomas including

colon, thyroid, breast, gastric, bladder, and squamous carcinomas [12]. Due to the high tumor-dissemination rate and early overexpression of integrin $\alpha6\beta4$ associated with pancreatic adenocarcinomas [8], we hypothesized that pancreatic cancer cell lines with increased levels of integrin $\alpha6\beta4$ expression would migrate at a higher rate than cells with low levels of integrin $\alpha6\beta4$. To test this hypothesis, we assessed the cell surface expression of both the integrin $\alpha6$ and $\beta4$ subunits by FACS analysis in five pancreatic cancer cell lines and determined how this expression related to their migratory rate toward HGF. For these experiments, we used HGF as the chemoattractant because its receptor *c-Met* is known to cooperate with the integrin $\alpha6\beta4$ to increase motility and invasion of cells in other tumor models [19,27] and is recognized as an important factor in pancreatic tumor progression [28]. As shown in Figure 1A, we found that MiaPaCa-2 and Panc-1 cells contained very low levels of cell surface $\alpha6\beta4$ integrin, whereas ASPC-1, Suit-2, and BxPC-3 cells each had increasingly high levels. These results were mirrored to a lesser extent in the immunoblot analysis of total protein. Furthermore, all cell lines except the MiaPaCa2 cells express appreciable amount of *c-Met* (Figure 1B). Next, Transwell chemotaxis assays were performed. Here, we found that the expression level of integrin $\alpha6\beta4$, rather than *c-Met*, correlated well with the ability of cells to chemotax toward HGF on laminin-1, a ligand of integrin $\alpha6\beta4$ (Figure 1C). Moreover, increasing concentrations of HGF (from 0 to 100 ng/ml) resulted in a steady

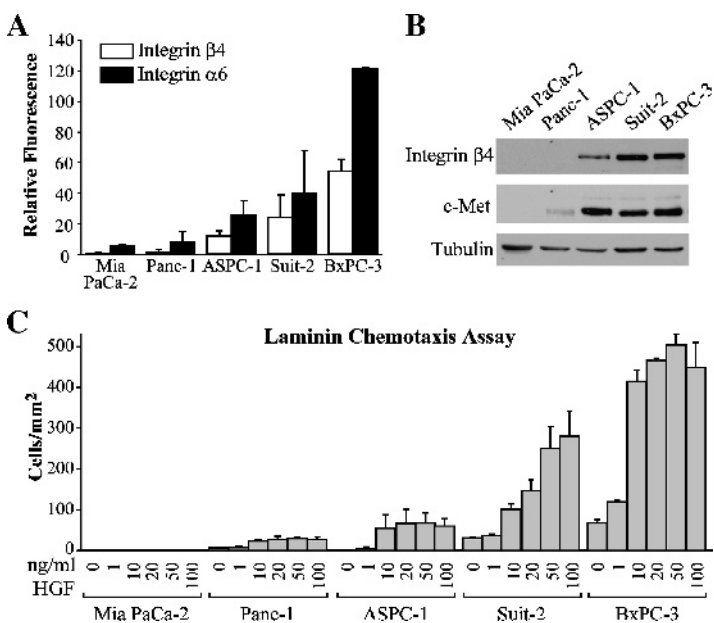


Figure 1. Integrin $\beta4$ expression in pancreatic cancer cell lines correlates with chemotactic efficiency toward HGF. (A) Select pancreatic cell lines, as noted, were assessed for the $\alpha6$ and $\beta4$ integrin subunit cell surface expression by FACS. Values represent average mean fluorescence and standard deviation of triplicate determinations. (B) Total cell lysates (80 μ g) from pancreatic cancer cell lines were immunoblotted and probed for expression of integrin $\beta4$ subunit, *c-Met*, and tubulin (loading control). (C) Pancreatic cancer cell lines were assayed for chemotactic migration using a Transwell chamber assay toward varying concentrations of HGF as described in the Materials and Methods section. Values reported represent the mean number of cells migrated per millimeter squared \pm standard deviation obtained from triplicate determinations.

increase in motility of Suit-2 and BXPC-3 cells rather than the plateau observed with the less aggressive cell lines or bell-shaped curve characteristic of most chemoattractants. Overall, these results indicate that integrin $\alpha 6 \beta 4$ expression positively correlates with the ability of pancreatic cancer cells to chemotax toward HGF on a laminin substrate.

Downregulation of $\alpha 6 \beta 4$ Integrin Expression Decreases HGF-stimulated Chemotactic Migration and Invasion of Pancreatic Cancer Cells

To directly assess the importance of $\alpha 6 \beta 4$ integrin in pancreatic cancer cell motility, we used synthetic siRNAs designed to target the $\alpha 6$ and $\beta 4$ subunits to reduce expression of the $\alpha 6 \beta 4$ integrin in ASPC-1 cells. We then assessed the effectiveness of siRNA to downregulate protein expression by FACS as the plasma membrane-associated integrins are the species that are expected to function in cell signaling and adhesion events. After 48 hours of siRNA treatment against the $\alpha 6$ or $\beta 4$ subunit, the cell surface expression level of the $\alpha 6 \beta 4$ integrin was decreased and resulted in reduced HGF-stimulated chemotactic migration and invasion (Figure 2). Similar results were obtained with Suit-2 cells (data not shown).

To further confirm the positive role of integrin $\alpha 6 \beta 4$ in the motile and invasive phenotype, we isolated clones from the parental Panc-1 cell line, which endogenously expresses low (Panc-1/2G6) or high levels (Panc-1/ZCM and Panc-1/3D7) of integrin $\alpha 6 \beta 4$ but have similar levels of c-Met (Figure 3A). We then assessed the ability of these cells to migrate on laminin-1 toward HGF and found that

the levels of expression of the integrin $\alpha 6 \beta 4$ correlated with motility (Figure 3A, right panel). Next, we treated the Panc-1/3D7 cells with siRNAs targeting the $\alpha 6$ and $\beta 4$ integrin subunits. We found that migration and invasion toward HGF were effectively downregulated by the reduction in $\alpha 6 \beta 4$ integrin expression (Figure 3, B and C) to a similar extent as seen with the ASPC-1 cells (Figure 2). To test the effects of signaling transduced from the integrin $\alpha 6 \beta 4$ cytoplasmic domain on motility, we stably transfected the Panc-1 parental cell line with cDNA containing a mutant $\beta 4$, which lacked the cytoplasmic domain except for the four amino acids distal to the transmembrane sequence [25] (Panc-1/ $\beta 4$ - Δ cyt). This construct acts as a dominant negative [29]. Expression of this construct was determined by FACS (Figure 3, A and D, right panels) because the antibody used in this study for immunoblot analysis recognizes the cytoplasmic domain of integrin $\beta 4$. As shown in Figure 3, A and D, cells expressing the $\beta 4$ - Δ cyt construct had substantially slower migration rate toward HGF than other Panc-1 clones, whereas it had minimal effect on the overall cell surface level of the integrin. In addition, we show that the Panc-1/3D7 cells have a steady increase in motility with increasing concentration of HGF as seen with the Suit-2 and BXPC-3 cells (Figure 1C). Taken together, these results further confirm the involvement of the integrin $\alpha 6 \beta 4$ in the motile phenotype of pancreatic cancer cell lines.

Rac1 Activity Is Required for HGF-Stimulated Migration and Invasion of Pancreatic Cancer Cells

The integrin $\alpha 6 \beta 4$ cooperates with growth factor receptors and affects multiple signaling components that contribute to the increased migratory and invasive phenotype of cancer cells [2,3,12,18]. Among the molecules activated by the integrin $\alpha 6 \beta 4$ are PI3-K [20] and the small GTPase Rac1 [22]. Using PI3-K inhibitors wortmannin and LY294002, we determined that PI3-K activity is critical for the migration and invasion of the various pancreatic carcinoma cell lines toward HGF (Figure W1). We further found that HGF substantially induced the activation of PI3-K as revealed by the phosphorylation status of Akt and the p85 regulatory subunit of PI3-K. However, we were unable to link the $\alpha 6 \beta 4$ integrin to the activation of PI3-K through either integrin clustering (data not shown) or reduction of the integrin $\alpha 6 \beta 4$ expression by siRNA alone or in conjunction with HGF treatment (Figure W2). These observations suggest that the activation of PI3-K was solely dependent on HGF stimulation. Therefore, we turned our attention to Rac1. Rac1 can enhance tumor cell motility and invasion in culture [30] and is overexpressed in 70% of pancreatic cancer tumor samples [31]. To test the involvement of Rac1 in pancreatic cancer cell motility and invasion, ASPC-1 and Panc-1/3D7 cells were treated with Rac1-specific siRNAs to downregulate the expression of Rac1 before assessing the cells' ability to migrate toward and invade HGF. We found that Rac1 siRNA treatment reduced the migration and invasiveness of both cell lines toward HGF (Figure 4A). Next, we assessed Rac1 activity using a PAK domain glutathione S-transferase pull-down assay after Panc-1/3D7 cells were treated with integrin $\alpha 6$ and $\beta 4$ subunit siRNAs. For these experiments, cells were plated on laminin for 2 hours and then left untreated or treated with HGF for 5 minutes. Our results indicate that basal levels of Rac1 activity in the absence of HGF stimulation were high in these cells and therefore difficult to detect any increase of Rac1 activity after HGF stimulation (Figure 4B). However, upon treatment with $\alpha 6$ or $\beta 4$ siRNAs, Rac1 activity was decreased under basal and HGF-stimulated conditions (Figure 4, B and C). Similar results

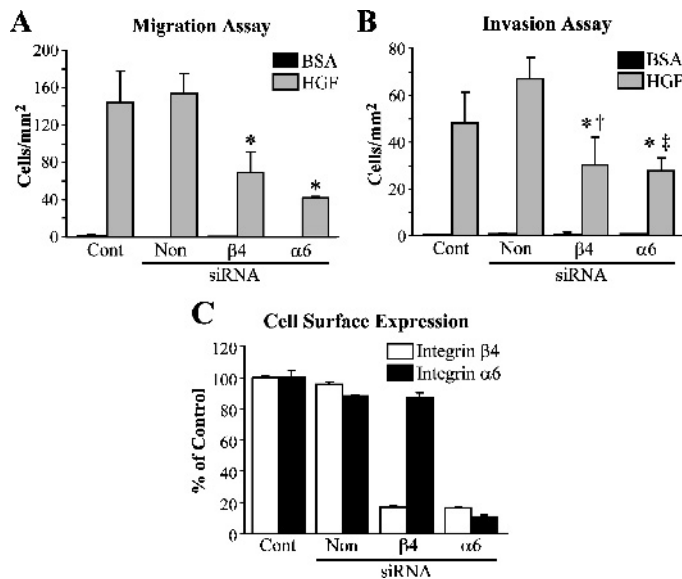


Figure 2. Downregulation of integrin $\alpha 6 \beta 4$ decreases chemotactic migration and invasion of ASPC-1 cells toward HGF. ASPC-1 cells (3×10^6) were electroporated-only control (Cont) or electroporated with 200 nM siRNA specific for the integrin subunits $\beta 4$ or $\alpha 6$, or a nontargeting control (Non) as indicated and analyzed 48 hours after siRNA treatment for chemotactic migration (A) ($*P < .001$ compared to Cont and Non) and invasion (B) ($*P < .001$ compared to Non; $^\dagger P = .02$ compared to Cont; $^\ddagger P = .004$ compared to Cont) toward medium/BSA only or 50 ng/ml HGF. (C) Effects of siRNA treatment on integrin $\alpha 6 \beta 4$ cell surface expression determined by FACS as performed in Figure 1A. Values expressed as percent of electroporated-only controls.

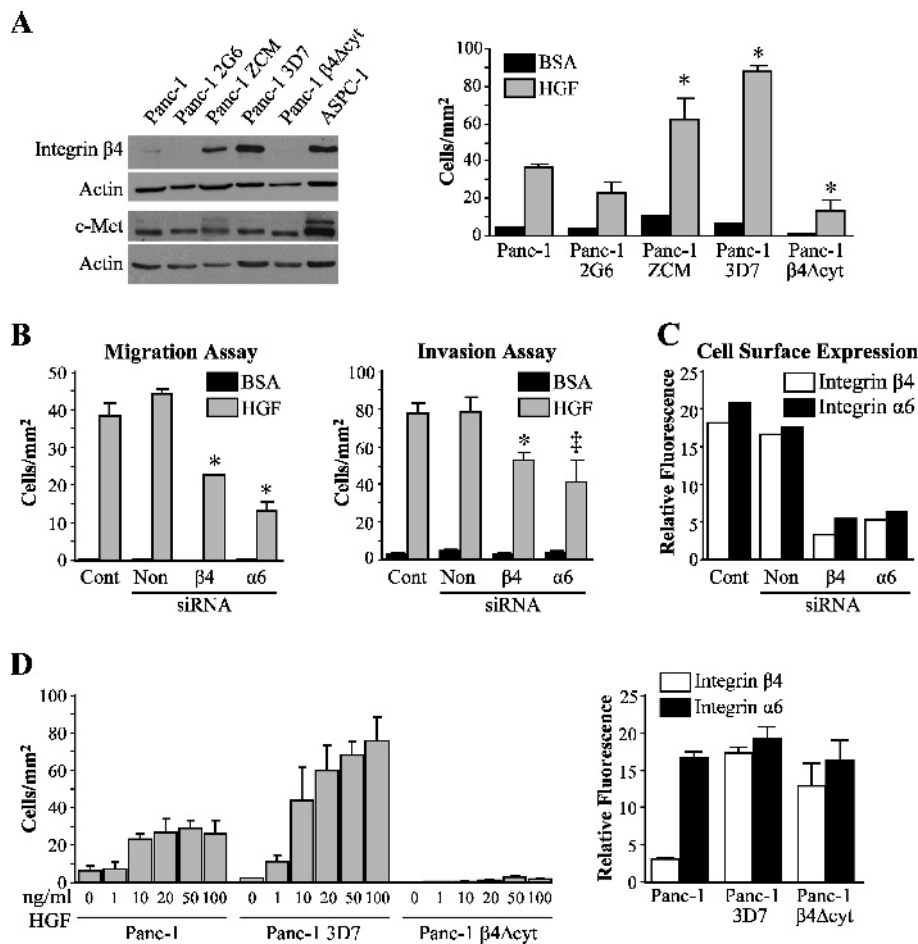


Figure 3. Integrin $\alpha 6\beta 4$ expression is required for the migration and invasion of pancreatic cancer cell lines *in vitro*. (A) Total cell lysates (80 μ g) from indicated Panc-1 cell lines were immunoblotted and probed for integrin $\beta 4$ subunit, c-Met, and actin (loading control) expression (left panel). Pancreatic cancer cell lines were assayed for migration toward medium/BSA only or 50 ng/ml HGF (right panel). ($*P < .001$ compared to Panc-1). (B) Panc-1/3D7 cells (3×10^6) were treated with siRNA as described in Figure 2 and assayed for chemotactic migration ($*P < .001$ compared to Cont and Non) and invasion toward medium/BSA or 50 ng/ml HGF ($*P = .002$ compared to Cont and $P = .006$ compared to Non; $^{\dagger}P < .001$ compared to Cont and $P = .002$ compared to non). (C) Integrin $\alpha 6\beta 4$ cell surface expression determined by FACS to confirmed downregulation levels from (B). (D) Panc-1, Panc-1/3D7 (high integrin $\beta 4$ expression), and Panc-1 $\beta 4\Delta$ cyt cells were assayed for migration toward increasing concentrations of HGF (left panel). The level of integrin $\alpha 6\beta 4$ expression from these cells was confirmed by FACS (right panel).

were obtained with the ASPC-1 cell line (data not shown). Together these data suggest that Rac1 is required for motility and invasion of pancreatic cancer cells and that expression of the integrin $\alpha 6\beta 4$ promotes activation of Rac1.

Tiam1 Is Upregulated by the Integrin $\alpha 6\beta 4$ and Is Required to Activate Rac1 and Promote Migration and Invasion of Pancreatic Cancer Cells

Having established a link between the expression of integrin $\alpha 6\beta 4$ and Rac1 activation, we next sought to determine molecules that could connect them to promote increased motility and invasion. To gain insight into possible candidate molecules, we performed Affymetrix gene chip analysis on the Panc-1 clones. For this analysis, RNA from two low $\alpha 6\beta 4$ expressing clones and two high $\alpha 6\beta 4$ expressing clones were prepared and processed for Affymetrix gene chip analysis. The results were then processed using the statistical package S-Plus Array Analyzer (S-PLUS). Differential expression testing was determined using the local pooled-error test to determine genes dif-

ferentially expressed as a consequence of $\alpha 6\beta 4$ expression to a 99% confidence level. Among these results, we found that the high $\alpha 6\beta 4$ integrin-expressing clones expressed significantly more Tiam1, a Rac-specific guanine nucleotide exchange factor (GEF) that has been implicated in cancer cell migration, invasion, and tumor progression [32,33]. To validate these results, we investigated the expression of Tiam1 in various pancreatic cancer cell lines. Using real-time PCR and immunoblot analysis, we found that Tiam1 was increased in three of the four pancreatic cancer cell lines (Panc-1/3D7, Suit-2, and BXPC-3) that overexpressed the $\alpha 6\beta 4$ integrin. In addition, we discovered that the Panc-1/ Δ cyt cells, which are unable to signal through the $\beta 4$ subunit, did not express Tiam1 (Figure 5, A and B).

Next, we investigated if Tiam1 expression facilitated HGF-stimulated chemotactic migration and invasion and if Tiam1 was responsible for promoting Rac1 activity in cells with increased expression levels of integrin $\alpha 6\beta 4$. After 48 hours of treatment with Tiam1-specific siRNAs, we found that Tiam1 siRNA reduced the migration and invasion of Panc-1/3D7 cells toward HGF (Figure 5C). Moreover, the

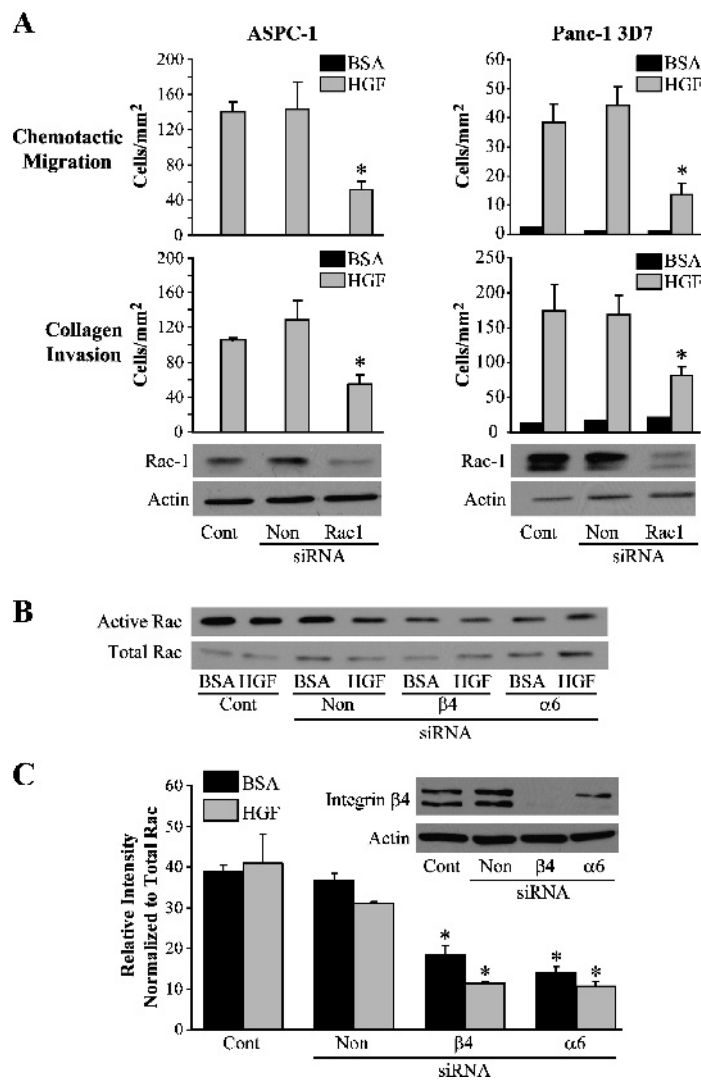


Figure 4. Rac1 is required for the chemotactic migration and invasive potential toward HGF. ASPC-1 and Panc-1/3D7 cells (3×10^6) were electroporated only (Cont) or electroporated with 200 nM siRNA specific for Rac1 or a nontargeting control (Non) as indicated and analyzed 48 hours after siRNA treatment for chemotactic migration and invasion (A) toward medium/BSA or 50 ng/ml HGF; $*P < .001$ compared to Cont and Non. Immunoblot of cell lysates was used to confirm downregulation of Rac1 for the ASPC-1 cells (lower left) and Panc-1/3D7 cells (lower right). (B) Panc-1/3D7 cells (3×10^6) were electroporated only (Cont), treated with 200 nM siRNA specific for the integrin subunits $\beta 4$ and $\alpha 6$ or a nontargeting control (Non) as indicated. After 48 hours of siRNA treatment, cells (3×10^6) were plated on laminin-1 and left untreated or treated for 5 minutes with 50 ng/ml HGF. Cell lysates were then analyzed for Rac1 activity using the PBD binding assay as described in the Materials and Methods section. (C) Densitometric analysis of three different exposures of immunoblots from (B) of activated (PAK-associated) Rac1. Data are reported as values for activated Rac1 divided by value for total cellular Rac1. $*P < .001$ compared to Cont and Non, BSA, and HGF. Inset shows immunoblot of integrin $\beta 4$ to confirm target downregulation and actin as loading control. Data are representative of three independent experiments.

migratory phenotype that was suppressed with Tiam1 siRNA treatment was rescued by the transfection of a full-length construct of Tiam1 (Figure 5D). Next, we investigated whether increased Tiam1 levels contributed to the high levels of Rac1 activity using siRNA. We found that Tiam1-specific siRNAs lead to a substantial decrease in Rac1 activity (Figure 5E), similar to that observed with $\alpha 6$ or $\beta 4$ integrin-specific siRNAs (Figure 4). Additionally, cells treated with integrin $\beta 4$ and $\alpha 6$ siRNAs, alone or in combination, displayed a decrease in Tiam1 expression (Figure 5F). Notably, the combination of $\alpha 6 \beta 4$ siRNAs was most efficacious in reducing Tiam1 expression. Therefore, we hypothesized that if the upregulation of Tiam1 was instrumental to the enhanced migration and invasion seen with high $\alpha 6 \beta 4$ integrin expression then the exogenous expression of Tiam1 would be able to mimic elevated levels of $\alpha 6 \beta 4$ integrin. For these experiments, we transiently transfected the low integrin $\beta 4$ expressing Panc-1/2G6 clone with a full-length Tiam1 construct and assessed their migratory and invasive ability toward HGF. We noted that the exogenous Tiam1 expression increased the migration and invasion of the Panc-1/2G6 subclone compared to vector-transfected cells (Figure 6). Together, these data indicate that Tiam1 expression correlates well with $\alpha 6 \beta 4$ integrin expression and that this exchange factor promotes the activation of Rac1 as well as HGF-induced chemotactic migration and invasion of the majority of pancreatic cancer cells tested.

Discussion

The integrin $\alpha 6 \beta 4$ is associated with carcinoma progression and subsequent metastasis through its ability to enhance motility and invasiveness of cancer cells [3]. However, the role of this integrin in pancreatic cancers has remained underexplored. We and others have shown that the integrin $\alpha 6 \beta 4$ is overexpressed in pancreatic cancers when compared to normal pancreas and chronic pancreatitis [4–8], which occurs early in pancreatic adenocarcinoma tumor progression [8]. In the current study, we extended our observations of the role of $\alpha 6 \beta 4$ integrin in pancreatic cancers to show that there is a good correlation of integrin $\alpha 6 \beta 4$ expression and the migratory potential of pancreatic carcinoma cells. Using siRNA technology to limit expression of the integrin $\alpha 6$ and $\beta 4$ subunits, we establish that this promigratory and proinvasive integrin facilitates HGF-stimulated motility and invasion of pancreatic cancer cells *in vitro*. Moreover, our data support other studies demonstrating that signaling through the $\alpha 6 \beta 4$ integrin and c-Met cooperate to promote motility and invasion of cancer cells [19,27]. One study suggests that the full oncogenic potential of c-Met requires the $\alpha 6 \beta 4$ integrin during tumorigenesis [34]. We further demonstrate that $\alpha 6 \beta 4$ integrin expression is required to promote Rac1 activation through the upregulation of specific Rac GEFs.

Rac1 is a Rho family GTPase that enhances tumor cell migration and invasion in culture [30] and is activated downstream of integrin $\alpha 6 \beta 4$ to induce invasion of breast cancer cells that expressed integrin $\alpha 6 \beta 4$ [20,22]. Similarly, we report that Rac1 is required for pancreatic cancer cells to migrate and invade toward HGF and that expression of the integrin $\alpha 6 \beta 4$ promotes activation of Rac1. The activity of Rac is tightly regulated by GEFs and GTPase-activating proteins that transition GTPases between an inactive state (GDP-bound) and active state (GTP-bound). Several Rac GEFs have been shown to act downstream of $\beta 1$ integrin signaling [35]; however, little is known about their association with the $\alpha 6 \beta 4$ integrin. In this study, we highlight a novel

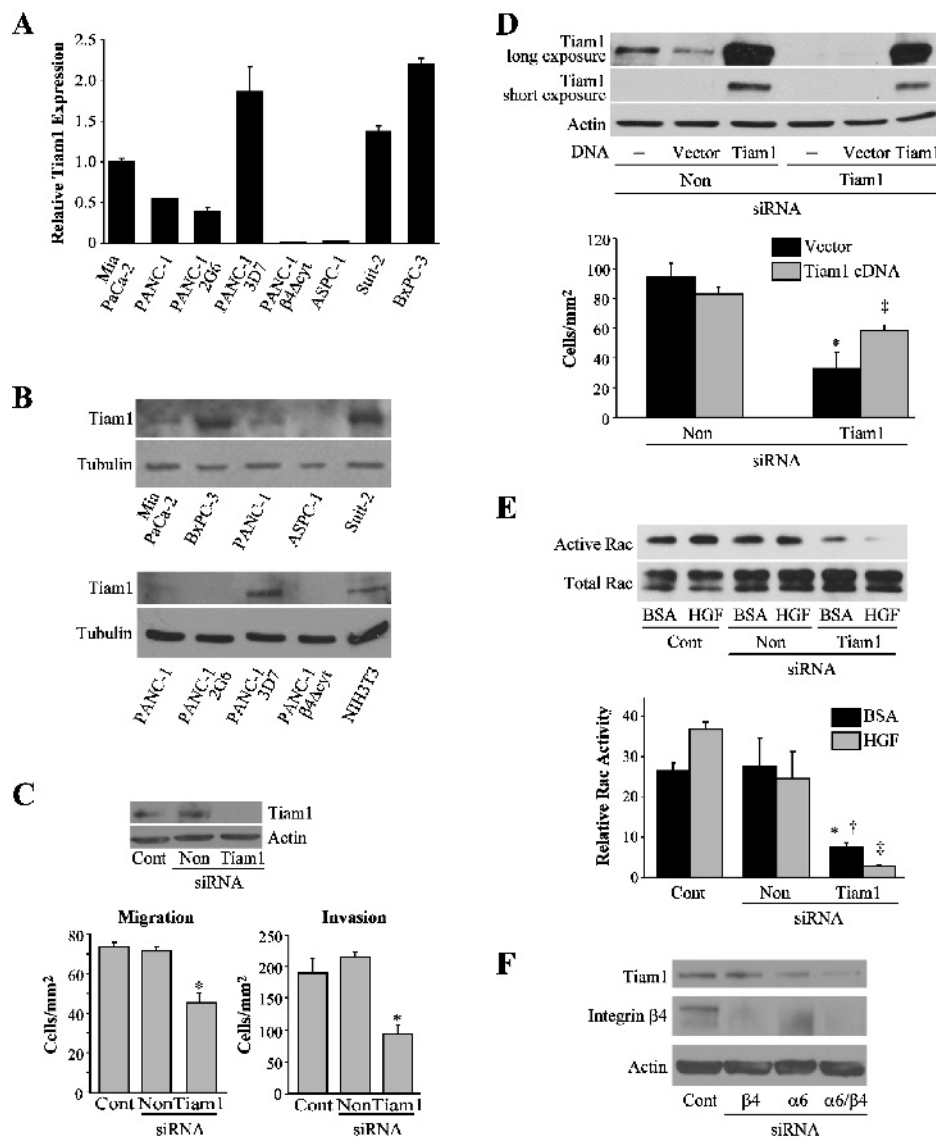


Figure 5. Tiam1 expression is required for Rac1 activity, migration, and invasion toward HGF of most pancreatic cancer cell lines that have high levels of integrin $\alpha 6\beta 4$. (A) Pancreatic cancer cell lines were assessed for Tiam1 mRNA expression with real-time PCR. Data were normalized to 18S and reported relative to MiaPaCa2. (B) Lysates from the indicated cell lines were immunoblotted for Tiam1 (top panels) and tubulin as a loading control (bottom panels). (C) Panc-1/3D7 cells (3×10^6) were electroporated only (Cont), or electroporated with 200 nM siRNA that is nontargeting (Non) or specific for Tiam1, as indicated, and analyzed 48 hours after siRNA treatment for chemotactic migration on laminin-1 or collagen invasion toward 50 ng/ml of HGF; $*P < .001$ compared to Cont and Non-treated cells. Immunoblot of Tiam1 for siRNA target confirmation and actin as loading control (top panel). (D) Panc-1/3D7 cells were either treated with 200 nM siRNA specific for Tiam1 or with a nontargeting control (Non) as indicated. After 48 hours of siRNA treatment, cells were left untreated (–) or transfected with vector or a full-length Tiam1 construct. After 48 hours, cells were assessed for their ability to migrate toward HGF (bottom panel) as in (C). Immunoblot analysis demonstrates Tiam1 levels after Tiam1 transfection and siRNA ablation with actin as loading control (top panel). $*P < .001$ compared to Non/vector and Non/Tiam1 FL; $^\ddagger P = .001$ compared to Tiam1/vector. (E) Panc-1/3D7 cells from (C) were assessed for Rac1 activity as performed in Figure 4C. Graph in (E) shows densitometry analysis from two different blot exposures; $*P < .001$ compared to Cont/BSA; $^\ddagger P = .003$ compared to Non/BSA; $^\ddagger P < .001$ compared to Cont and Non/HGF. Data are representative of three independent experiments. (F) Panc-1/3D7 cells (3×10^6) were electroporated only (Cont), treated with 200 nM siRNA specific for the integrin subunits $\beta 4$ or $\alpha 6$, alone or in combination, as indicated. After 48 hours of siRNA treatment, cells (3×10^6) were lysed and probed for the presence of Tiam1, integrin $\beta 4$, and actin.

mechanism by which integrin $\alpha 6\beta 4$ affects activation of Rac1 through the upregulation of the Rac1-specific GEF, Tiam1.

Tiam1 was originally identified as an invasion and metastasis-inducing gene by proviral tagging in combination with *in vitro* selection for invasiveness in T-lymphoma cells [33] and subsequently found to selectively activate the Rho family GTPase Rac [36]. The

role of Tiam1 in cell migration, invasion, and metastasis is not limited to T lymphoma, as this exchange factor is involved in promoting tumor progression in other cancers such as colorectal, breast, and lung, as well as Ras-induced skin tumors [32]. In this study, we found that expression of Tiam1 was required for pancreatic cancer cells to activate Rac1 and correlated with HGF-induced migration

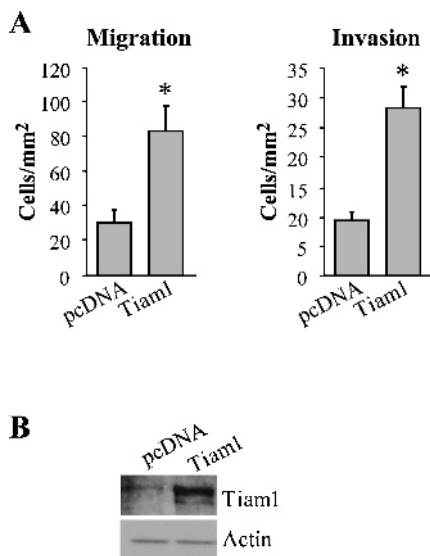


Figure 6. Exogenous Tiam1 promotes migration and invasion of pancreatic cancer cells. (A) Panc-1 2G6 cells (low integrin $\beta 4$ expression) were transiently transfected with a full-length construct of Tiam1 and then assessed for chemotactic migration on laminin-1 and collagen invasion toward 50 ng/ml of HGF. * $P < .001$ compared to pcDNA transfected cells. (B) Immunoblot of Tiam1 to confirm expression of full-length Tiam1 and actin as loading control. Transfection efficiency was approximately 60%.

and invasion in an integrin $\alpha 6\beta 4$ -dependent manner. We also demonstrated that the cytoplasmic tail of the integrin $\alpha 6\beta 4$, known to be responsible for the signaling transduced from this integrin [19,20], is required for expression of Tiam1 because the Panc-1/ Δ cyt clone lacked expression of Tiam1. In cells that are less motile and invasive and contain low expression levels of both integrin $\alpha 6\beta 4$ and Tiam1, exogenous expression of Tiam1 aided HGF-induced migration and invasion (Figure 6). Interestingly, we found that exogenous expression of Tiam1 did not increase the high migratory levels of cells with endogenous expression of integrin $\alpha 6\beta 4$ and Tiam1 (Figure 5D). One reason for this observation may be due to a role of Tiam1 as a rate-limiting step during HGF-mediated migration but not basal migration. Alternatively, integrin $\alpha 6\beta 4$ could also regulate other properties of Tiam1, such as its activity and/or localization, two mechanisms that are critical for the function of this protein to activate Rac. Certainly, the activation of Tiam1 downstream of the $\alpha 6\beta 4$ integrin does not appear to require the PI3K pathway because PI3K is not activated in the absence of HGF stimulation and HGF does not promote the activation of Rac. These observations are in accordance with the fact that Tiam1 activation, unlike that of many other Rac GEFs, does not necessarily require PI3K [37]. Although the activation of Tiam1 downstream of HGF has recently been established in vascular endothelial permeability studies [38,39], our work highlights a previously unrecognized connection between Tiam1, the motility promoting functions of HGF/*c-Met*, and pancreatic cancer.

It is interesting to note that ASPC-1 cells express high levels of integrin $\alpha 6\beta 4$ and have high Rac1 activity, but lack expression of Tiam1. These data imply that an additional exchange factor could be responsible for Rac1 activation by the integrin $\alpha 6\beta 4$ to promote the migratory and invasive phenotype observed. One candidate is

Vav1, as it was shown to play a role in pancreatic cancer tumorigenesis [40], but others such as Tiam2, Trio, Sos, and Pix could also be involved, as these GEFs are known to activate Rac [41,42]. One possibility for the discrepancy in Tiam1 expression could be the origin from which these pancreatic cancer cell lines were derived because the ASPC-1 cells were isolated from a metastasis to the ascites [43] and the Panc-1 cells were isolated from a primary tumor of the head of the pancreas [44]. In support of the idea that GEF expression could be cell type specific, in breast cancer cell lines GEFs other than Tiam1 are elevated by the $\alpha 6\beta 4$ integrin to promote Rac activity (M. Chen and K. L. O'Connor, unpublished observation). The concept that the $\alpha 6\beta 4$ integrin can affect similar changes, such as the activation of Rac, through the cell type-specific upregulation of specific factors is intriguing and may help to explain why the $\alpha 6\beta 4$ integrin can promote the migratory and invasive phenotype of many types of cells. However, there remains much to be learned about the mechanisms of how integrin $\alpha 6\beta 4$ affects migration and invasion of cancer cells, especially how the $\alpha 6\beta 4$ integrin can affect GEF expression and its subsequent activation.

The genesis of activating mutations in K-Ras is one of the first events in pancreatic adenocarcinoma progression that occurs at a frequency of around 85% [45]. Interestingly, signaling induced from this type of oncogenic Ras has been reported to have differential effects on Tiam1 expression, which can, in turn, affect tumor development and progression. For example, the overexpression of Tiam1 in normal polarized epithelial cells has been shown to tighten cell-cell junctions thereby inhibiting HGF-mediated scattering [46]. This inhibition can be reversed by oncogenic Ras signaling, which promotes a decrease in Tiam1 expression [47]. However, effective initiation of chemically induced epidermal tumors by oncogenic Ras *in vivo* requires Tiam1 expression and Rac signaling [48]. Therefore, if oncogenic Ras signaling has the potential to downregulate Tiam1 expression, then other GEFs must be used to induce migration and invasion of tumor cells. Alternatively, other signaling pathways could be activated to increase Tiam1 and compensate for the Ras-induced Tiam1 loss. In the chemical induction model for epidermal tumors, for example, the integrin $\alpha 6\beta 4$ is required for Ras to promote the formation of human squamous cell carcinomas [49]. Because our results show that integrin $\alpha 6\beta 4$ can upregulate Tiam1 expression and this integrin is overexpressed at an early stage during pancreatic adenocarcinoma progression [8], we suggest that increased expression of integrin $\alpha 6\beta 4$ could restore Tiam1 expression after its downregulation by oncogenic Ras signaling in tumors. Taken together, these observations suggest a possible mechanism involving the upregulation of Tiam1 and the subsequent activation of Rac for the cooperation between integrin $\alpha 6\beta 4$ and Ras signaling in pancreatic adenocarcinomas that could contribute to its aggressive nature.

In summary, this study reports that integrin $\alpha 6\beta 4$ cell surface expression in pancreatic cancer cells correlates with increased HGF-induced chemotactic motility. In addition, we show that integrin $\alpha 6\beta 4$ expression is required to activate Rac1 and promote HGF-induced motility and invasion. This activation of Rac is mediated by the upregulation of the Rac-specific GEF, Tiam1. Our findings are consistent with the scenario that the $\alpha 6\beta 4$ integrin cooperates with *c-Met* and further demonstrates that one level of cooperation lies within the Tiam1-Rac1 pathway. Our study in pancreatic cancer extends findings in other cancer systems that highlight the important contribution of the integrin $\alpha 6\beta 4$ expression and downstream signaling events to induce tumor cell migration and invasion.

Acknowledgments

We gratefully acknowledge Arthur Mercurio, John H. Exton, and Takeshi Iwamura for reagents and Karen Martin for graphics assistance. We also thank B. Mark Evers, Sarita Sastry, Lisa Elferink, Adriana Paulucci, and Min Chen for helpful discussions as well as L. Nicole Towers and Huiping Guo for technical assistance.

References

- Jemal A, Siegel R, Ward E, Murray T, Xu J, Smigal C, and Thun MJ (2006). Cancer statistics, 2006. *CA Cancer J Clin* **56**, 106–130.
- Guo W and Giancotti FG (2004). Integrin signalling during tumour progression. *Nat Rev Mol Cell Biol* **5**, 816–826.
- Lipscomb EA and Mercurio AM (2005). Mobilization and activation of a signaling competent $\alpha 6\beta 4$ integrin underlies its contribution to carcinoma progression. *Cancer Metastasis Rev* **24**, 413–423.
- Logsdon CD, Simeone DM, Binkley C, Arumugam T, Greenson JK, Giordano TJ, Misek DE, Quirk R, and Hanash S (2003). Molecular profiling of pancreatic adenocarcinoma and chronic pancreatitis identifies multiple genes differentially regulated in pancreatic cancer. *Cancer Res* **63**, 2649–2657.
- Crnogorac-Jurcovic T, Missiaglia E, Blaveri E, Gangeswaran R, Jones M, Terris B, Costello E, Neoptolemos JP, and Lemoine NR (2003). Molecular alterations in pancreatic carcinoma: expression profiling shows that dysregulated expression of S100 genes is highly prevalent. *J Pathol* **201**, 63–74.
- Nakamura T, Furukawa Y, Nakagawa H, Tsunoda T, Ohigashi H, Murata K, Ishikawa O, Ohgaki K, Kashimura N, Miyamoto M, et al. (2004). Genome-wide cDNA microarray analysis of gene expression profiles in pancreatic cancers using populations of tumor cells and normal ductal epithelial cells selected for purity by laser microdissection. *Oncogene* **23**, 2385–2400.
- Gleason B, Adley B, Rao MS, and Diaz LK (2005). Immunohistochemical detection of the $\beta 4$ integrin subunit in pancreatic adenocarcinoma. *J Histochem Cytochem* **53**, 799–801.
- Cruz-Monserrate Z, Qiu S, Evers BM, and O'Connor KL (2007). Upregulation and redistribution of integrin $\alpha 6\beta 4$ expression occurs at an early stage in pancreatic adenocarcinoma progression. *Mod Pathol* **20**, 656–667.
- Hynes RO (2002). Integrins: bidirectional, allosteric signaling machines. *Cell* **110**, 673–687.
- Hemler ME, Crouse C, and Sonnenberg A (1989). Association of the VLA alpha 6 subunit with a novel protein. A possible alternative to the common VLA beta 1 subunit on certain cell lines. *J Biol Chem* **264**, 6529–6535.
- Borradori L and Sonnenberg A (1999). Structure and function of hemidesmosomes: more than simple adhesion complexes. *J Invest Dermatol* **112**, 411–418.
- Mercurio AM and Rabinovitz I (2001). Towards a mechanistic understanding of tumor invasion—lessons from the $\alpha 6\beta 4$ integrin. *Semin Cancer Biol* **11**, 129–141.
- Grossman HB, Lee C, Bromberg J, and Liebert M (2000). Expression of the $\alpha 6\beta 4$ integrin provides prognostic information for bladder cancer. *Oncol Rep* **7**, 13–16.
- Bachelder RE, Marchetti A, Falcioni R, Soddu S, and Mercurio AM (1999). p53 inhibits $\alpha 6\beta 4$ integrin survival signaling by promoting the caspase 3-dependent cleavage of AKT/PKB. *J Biol Chem* **274**, 20733–20737.
- Raymond K, Krefl M, Song JY, Janssen H, and Sonnenberg A (2007). Dual role of $\alpha 6\beta 4$ integrin in epidermal tumor growth: tumor-suppressive versus tumor-promoting function. *Mol Biol Cell* **18**, 4210–4221.
- Rabinovitz I, Toker A, and Mercurio AM (1999). Protein kinase C-dependent mobilization of the $\alpha 6\beta 4$ integrin from hemidesmosomes and its association with actin-rich cell protrusions drive the chemotactic migration of carcinoma cells. *J Cell Biol* **146**, 1147–1159.
- Gambaledda D, Marchetti A, Benedetti L, Mercurio AM, Sacchi A, and Falcioni R (2000). Cooperative signaling between $\alpha 6\beta 4$ integrin and ErbB2 receptor is required to promote phosphatidylinositol 3-kinase-dependent adhesion. *J Biol Chem* **275**, 10604–10610.
- Folgiro V, Bachelder RE, Bon G, Sacchi A, Falcioni R, and Mercurio AM (2007). The $\alpha 6\beta 4$ integrin can regulate ErbB-3 expression: implications for $\alpha 6\beta 4$ signaling and function. *Cancer Res* **67**, 1645–1652.
- Trusolino L, Bertotti A, and Comoglio PM (2001). A signaling adapter function for $\alpha 6\beta 4$ integrin in the control of HGF-dependent invasive growth. *Cell* **107**, 643–654.
- Shaw LM, Rabinovitz I, Wang HH-F, Toker A, and Mercurio AM (1997). Activation of phosphoinositide 3-OH kinase by the $\alpha 6\beta 4$ integrin promotes carcinoma invasion. *Cell* **91**, 949–960.
- Bachelder RE, Ribick MJ, Marchetti A, Falcioni R, Soddu S, Davis KR, and Mercurio AM (1999). p53 inhibits $\alpha 6\beta 4$ integrin survival signaling by promoting the caspase 3-dependent cleavage of AKT/PKB. *J Cell Biol* **147**, 1063–1072.
- Zahir N, Lakins JN, Russell A, Ming W, Chatterjee C, Rozenberg GI, Marinkovich MP, and Weaver VM (2003). Autocrine laminin-5 ligates $\alpha 6\beta 4$ integrin and activates RAC and NF κ B to mediate anchorage-independent survival of mammary tumors. *J Cell Biol* **163**, 1397–1407.
- Horwitz AR and Parsons JT (1999). Cell migration—movin' on. *Science* **286**, 1102–1103.
- Jemal A, Tiwari RC, Murray T, Ghafoor A, Samuels A, Ward E, Feuer EJ, and Thun MJ (2004). Cancer statistics, 2004. *CA Cancer J Clin* **54**, 8–29.
- Clarke AS, Lotz MM, Chao C, and Mercurio AM (1995). Activation of the p21 pathway of growth arrest and apoptosis by the $\beta 4$ integrin cytoplasmic domain. *J Biol Chem* **270**, 22673–22676.
- O'Connor KL and Mercurio AM (2001). Protein kinase A regulates Rac and is required for the growth factor-stimulated migration of carcinoma cells. *J Biol Chem* **276**, 47895–47900.
- Chung J, Yoon SO, Lipscomb EA, and Mercurio AM (2004). The Met receptor and $\alpha 6\beta 4$ integrin can function independently to promote carcinoma invasion. *J Biol Chem* **279**, 32287–32293.
- Di Renzo MF, Poulosom R, Olivero M, Comoglio PM, and Lemoine NR (1995). Expression of the Met/hepatocyte growth factor receptor in human pancreatic cancer. *Cancer Res* **55**, 1129–1138.
- Shaw LM, Chao C, Wewer UM, and Mercurio AM (1996). Function of the integrin $\alpha 6\beta 1$ in metastatic breast carcinoma cells assessed by expression of a dominant-negative receptor. *Cancer Res* **56**, 959–963.
- Keely JP, Westwick JK, Whitehead IP, Der CJ, and Parise LV (1997). Cdc42 and Rac1 induce integrin-mediated cell motility and invasiveness through PI(3)K. *Nature* **390**, 632–636.
- Crnogorac-Jurcovic T, Efthimiou E, Capelli P, Blaveri E, Baron A, Terris B, Jones M, Tyson K, Bassi C, Scarpa A, et al. (2001). Gene expression profiles of pancreatic cancer and stromal desmoplasia. *Oncogene* **20**, 7437–7446.
- Minard ME, Kim LS, Price JE, and Gallick GE (2004). The role of the guanine nucleotide exchange factor Tiam1 in cellular migration, invasion, adhesion and tumor progression. *Breast Cancer Res Treat* **84**, 21–32.
- Habets GG, Scholtes EH, Zuydgeest D, van der Kammen RA, Stam JC, Berns A, and Collard JG (1994). Identification of an invasion-inducing gene, Tiam-1, that encodes a protein with homology to GDP-GTP exchangers for Rho-like proteins. *Cell* **77**, 537–549.
- Bertotti A, Comoglio PM, and Trusolino L (2005). Beta4 integrin is a transforming molecule that unleashes Met tyrosine kinase tumorigenesis. *Cancer Res* **65**, 10674–10679.
- Yron I, Deckert M, Reff ME, Munshi A, Schwartz MA, and Altman A (1999). Integrin-dependent tyrosine phosphorylation and growth regulation by Vav. *Cell Adhes Commun* **7**, 1–11.
- Michiels F, Habets GG, Stam JC, van der Kammen RA, and Collard JG (1995). A role for Rac in Tiam1-induced membrane ruffling and invasion. *Nature* **375**, 338–340.
- Fleming IN, Gray A, and Downes CP (2000). Regulation of the Rac1-specific exchange factor Tiam1 involves both phosphoinositide 3-kinase-dependent and -independent components. *Biochem J* **351**, 173–182.
- Birukova AA, Alekseeva E, Mikaelyan A, and Birukov KG (2007). HGF attenuates thrombin-induced endothelial permeability by Tiam1-mediated activation of the Rac pathway and by Tiam1/Rac-dependent inhibition of the Rho pathway. *FASEB J* **21**, 2776–2786.
- Singleton PA, Salgia R, Moreno-Vinasco L, Moitra J, Sammani S, Mirzapozazova T, and Garcia JGN (2007). CD44 regulates hepatocyte growth factor-mediated vascular integrity: role of c-Met, Tiam1/Rac1, dynamin 2 and cortactin. *J Biol Chem* Aug 16 [Epub ahead of print].
- Fernandez-Zapico ME, Gonzalez-Paz NC, Weiss E, Savoy DN, Molina JR, Fonseca R, Smyrk TC, Chari ST, Urrutia R, and Billadeau DD (2005). Ectopic expression of VAV1 reveals an unexpected role in pancreatic cancer tumorigenesis. *Cancer Cell* **7**, 39–49.
- Chiu CY, Leng S, Martin KA, Kim E, Gorman S, and Duhl DM (1999). Cloning and characterization of T-cell lymphoma invasion and metastasis 2 (TIAM2), a novel guanine nucleotide exchange factor related to TIAM1. *Genomics* **61**, 66–73.

- [42] Scita G, Tenca P, Frittoli E, Tocchetti A, Innocenti M, Giardina G, and Di Fiore PP (2000). Signaling from Ras to Rac and beyond: not just a matter of GEFs. *EMBO J* **19**, 2393–2398.
- [43] Chen WH, Horoszewicz JS, Leong SS, Shimano T, Penetrante R, Sanders WH, Berjian R, Douglass HO, Martin EW, and Chu TM (1982). Human pancreatic adenocarcinoma: *in vitro* and *in vivo* morphology of a new tumor line established from ascites. *In Vitro* **18**, 24–34.
- [44] Lieber M, Mazzetta J, Nelson-Rees W, Kaplan M, and Todaro G (1975). Establishment of a continuous tumor-cell line (panc-1) from a human carcinoma of the exocrine pancreas. *Int J Cancer* **15**, 741–747.
- [45] Caldas C, Hahn SA, Hruban RH, Redston MS, Yeo CJ, and Kern SE (1994). Detection of K-ras mutations in the stool of patients with pancreatic adenocarcinoma and pancreatic ductal hyperplasia. *Cancer Res* **54**, 3568–3573.
- [46] Hordijk PL, ten Klooster JP, van der Kammen RA, Michiels F, Oomen LC, and Collard JG (1997). Inhibition of invasion of epithelial cells by Tiam1-Rac signaling. *Science* **278**, 1464–1466.
- [47] Zondag GCM, Evers EE, ten Klooster JP, Janssen L, van der Kammen RA, and Collard JG (2000). Oncogenic Ras downregulates Rac activity, which leads to increased Rho activity and epithelial-mesenchymal transition. *J Cell Biol* **149**, 775–781.
- [48] Malliri A, van der Kammen RA, Clark K, van der Valk M, Michiels F, and Collard JG (2002). Mice deficient in the Rac activator Tiam1 are resistant to Ras-induced skin tumours. *Nature* **417**, 867–871.
- [49] Dajee M, Lazarov M, Zhang JY, Cai T, Green CL, Russell AJ, Marinkovich MP, Tao S, Lin Q, Kubo Y, et al. (2003). NF-kappaB blockade and oncogenic Ras trigger invasive human epidermal neoplasia. *Nature* **421**, 639–643.

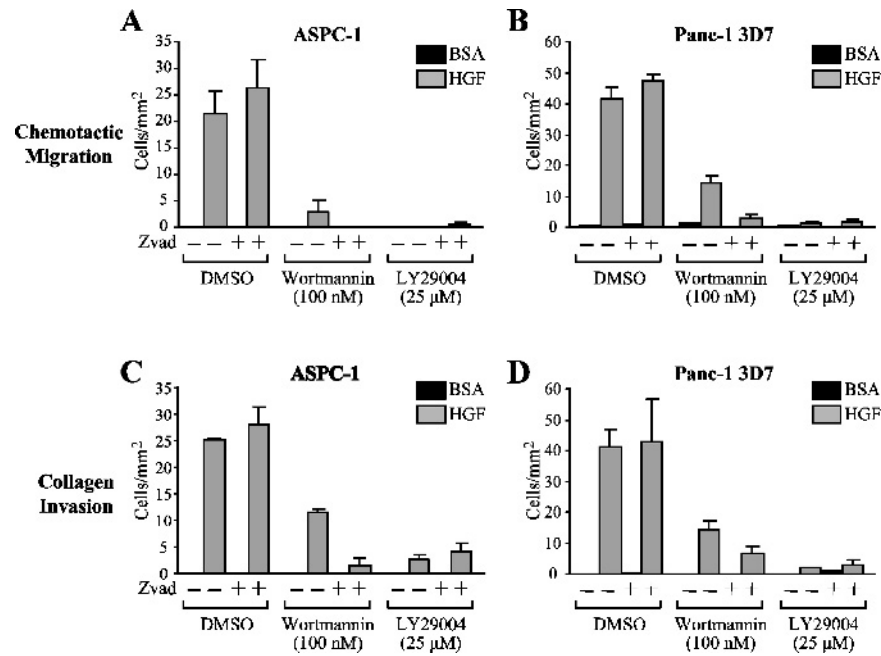


Figure W1. PI3-K is required for chemotactic migration and invasion toward HGF. ASPC-1 (A, C) and Panc-1/3D7 clone (B, D) cells were incubated with DMSO (1%), LY294002 (25 μM), or wortmannin (100 nM) for 30 minutes at room temperature with and without ZVad (a broad-spectrum caspase inhibitor) as noted. Cells (3×10^6) were then allowed to migrate (A, B) for 4 hours or invade (C, D) for 6 hours toward 50 ng/ml HGF in the presence of drug as described in the Materials and Methods section.

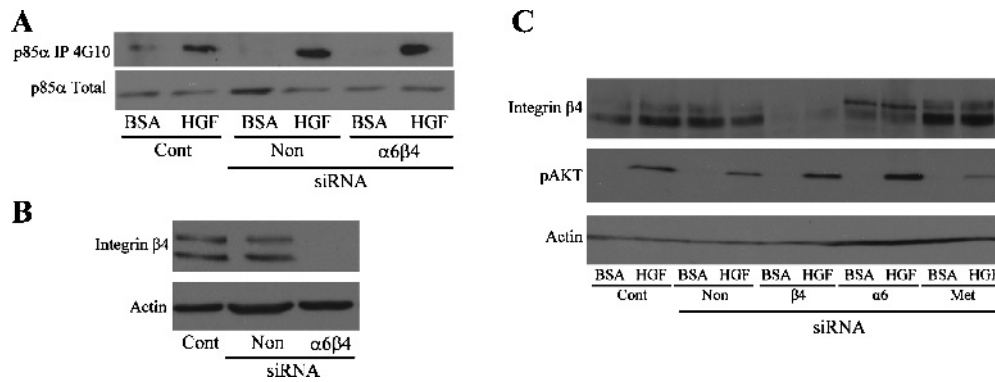


Figure W2. Integrin α6β4 expression does not influence activation of PI3-K. Panc-1/3D7 cells (3×10^6) were electroporated only (Cont) or electroporated with 200 nM siRNA specific for α6 and β4 or a nontargeting (Non) control as indicated. After 48 hours of siRNA treatment, cells were plated on laminin-1 and left untreated or treated for 5 minutes with 50 ng/ml HGF. Cell lysates were then analyzed for p85α activation by immunoprecipitating with an anti-phosphotyrosine antibody (clone 4G10) and then immunoblotting with a p85α antibody (A). (B) Immunoblot of integrin β4 to confirm target downregulation using actin as loading control. (C) Panc-1/3D7 cells were treated with indicated siRNAs as in (A); cell lysates were then analyzed for the presence of phosphorylated AKT (pAKT) and actin as loading control.