

Complexity of Atherosclerotic Coronary Artery Disease and Long-Term Outcomes in Patients With Unprotected Left Main Disease Treated With Drug-Eluting Stents or Coronary Artery Bypass Grafting

Duk-Woo Park, MD,* Young-Hak Kim, MD,* Sung-Cheol Yun, PhD,† Hae Geun Song, MD,* Jung-Min Ahn, MD,* Jun-Hyok Oh, MD,* Won-Jang Kim, MD,* Jong-Young Lee, MD,* Soo-Jin Kang, MD,* Seung-Whan Lee, MD,* Cheol Whan Lee, MD,* Seong-Wook Park, MD,* Seung-Jung Park, MD*

Seoul, Korea

- Objectives** The aim of this study was to compare treatment effects of drug-eluting stents (DES) or coronary artery bypass grafting (CABG) for left main coronary artery (LMCA) disease according to the complexity of atherosclerotic disease burden.
- Background** Limited information is available on the relationships between the extent of coronary atherosclerosis and very long-term outcomes of surgical or percutaneous LMCA revascularization.
- Methods** A total of 1,146 patients with unprotected LMCA disease who received DES (n = 645) or underwent CABG (n = 501) were evaluated. The extent of atherosclerotic disease burden was measured using the SYNTAX (Synergy Between PCI With Taxus and Cardiac Surgery) score; a low-risk score was defined as ≤ 22 , an intermediate-risk score as 23 to 32, and a high-risk score as ≥ 33 .
- Results** After multivariate adjustment with the inverse-probability-of-treatment weighting method, the 5-year risks for death (6.1% for DES vs. 16.2% for CABG; hazard ratio [HR]: 0.52; 95% confidence interval [CI]: 0.21 to 1.28; $p = 0.15$) and the composite of death, Q-wave myocardial infarction, or stroke (6.4% vs. 16.2%; HR: 0.54; 95% CI: 0.22 to 1.34; $p = 0.18$) favored DES in patients with low-risk SYNTAX scores; in contrast, the 5-year risks for death (26.9% vs. 17.8%; HR: 1.46; 95% CI: 0.92 to 2.30; $p = 0.11$) and the composite outcome (27.6% vs. 19.5%; HR: 1.36; 95% CI: 0.87 to 2.12; $p = 0.18$) favored CABG in patients with high-risk SYNTAX scores (interaction $p = 0.047$ for death, interaction $p = 0.08$ for composite outcome). Patients undergoing CABG consistently had lower rates of target vessel revascularization.
- Conclusions** According to the complexity of concomitant coronary disease, there were differential treatment effects on long-term mortality in patients with unprotected LMCA disease who received DES or underwent CABG. (J Am Coll Cardiol 2011;57:2152-9) © 2011 by the American College of Cardiology Foundation

Over the past few years, revascularization of patients with significant coronary artery disease (CAD) has markedly improved because of advances in both coronary artery bypass grafting (CABG) and percutaneous coronary intervention

(PCI), contributing to reductions in mortality and morbidity (1,2). In particular, PCI involving drug-eluting stents (DES) is increasingly used to treat complex CAD, such as unprotected left main coronary artery (LMCA) disease, for which CABG has been regarded historically as the treatment of choice (3).

The choice of PCI or CABG for treatment of LMCA disease or multivessel CAD depends on several clinical and anatomical features, making optimal patient selection crucial in determining the appropriate treatment and in achieving favorable long-term outcomes (4). Among these factors, observational comparisons of CABG and PCI suggest a strong relation between the extent of atherosclerotic CAD

From the *Division of Cardiology, University of Ulsan College of Medicine, Asan Medical Center, Seoul, Korea; and the †Division of Biostatistics, Center for Medical Research and Information, University of Ulsan College of Medicine, Seoul, Korea. This study was partly supported by the Cardiovascular Research Foundation (Seoul, Korea) and by grant 0412-CR02-0704-0001 from the Korea Health 21 R&D Project, Ministry of Health and Welfare (Seoul, Korea). All authors have reported that they have no relationships to disclose.

Manuscript received October 20, 2010; revised manuscript received December 13, 2010, accepted January 11, 2011.

and the relative effectiveness of these procedures on clinical outcomes (5–11). However, in these studies, only a crude proxy of atherosclerotic disease burden (i.e., the number of disease vessels or involvement of specific disease location) has been used, and therefore significant interaction between the extent of atherosclerosis and treatment effect was underestimated.

We previously reported that PCI with stenting showed similar rates of safety outcomes, but inferior rates of efficacy outcomes, compared with CABG in patients with unprotected LMCA disease (12). However, the lack of information to measure the extent of atherosclerosis would act as important unmeasured confounders, and it could penalize the apparent long-term benefits of surgery over PCI. Recently, a detailed angiographic scoring system (SYNTAX [Synergy Between PCI With Taxus and Cardiac Surgery] score) to reflect complexity of CAD has been developed and validated in several cohorts of patients with atherosclerotic coronary disease (13–17).

In this study, to determine whether atherosclerotic disease burden may influence the treatment choice and, importantly, may also be linked to long-term outcomes, we compared the relative treatment effects of PCI or CABG for unprotected LMCA disease according to a more detailed measure of extent of disease, such as the SYNTAX score.

Methods

Study group and design. The MAIN-COMPARE (Revascularization for Unprotected Left Main Coronary Artery Stenosis: Comparison of Percutaneous Coronary Angioplasty Versus Surgical Revascularization) study enrolled patients with unprotected LMCA stenosis who underwent CABG or PCI as the index procedure at 12 major cardiac centers in Korea between January 2000 and June 2006 (18). From January 2000 through May 2003, coronary stenting was performed exclusively with bare-metal stents, whereas from May 2003 through June 2006, DES were used exclusively. Because the SYNTAX score was developed in the DES era, as an integral part of the SYNTAX trial design, and methods of stent implantation have evolved from the bare-metal stent era to the DES era with an attempt to fully cover the diseased segments, we included only the post-DES cohort (wave 2 of the registry; DES vs. concurrent CABG between May 2003 and June 2006) among the overall cohort for these analyses. The details of the overall cohort and a separate cohort from bare-metal stents to DES have been described previously (12). Patients who had prior CABG, those who underwent concomitant valvular or aortic surgery, and those who had ST-segment elevation myocardial infarction (MI) or presented with cardiogenic shock were excluded. The local ethics committee at each hospital approved the use of clinical data for this study, and all patients provided written informed consent.

Patients underwent PCI, instead of CABG, because of either patient or physician preference or the high risk associated with CABG. Methods of stent implantation for patients with LMCA disease have been described previously (19,20). All procedures were performed using standard interventional techniques. Antiplatelet therapy and periprocedural anticoagulation followed standard regimens. After the procedure, patients were prescribed aspirin indefinitely and clopidogrel for at least 6 months, regardless of DES type. Surgical revascularization was performed using standard bypass techniques (21). Complete revascularization was performed when possible using arterial conduits or saphenous vein grafts. Clinical follow-up after PCI and after CABG was recommended at 1 month, 6 months, and 1 year and then annually thereafter. For this analysis, the follow-up period extended through October 30, 2009, to ensure that all patients had an opportunity for at least 3 years and approximately up to 7 years of follow-up information.

The primary safety outcomes were death and the composite of death, Q-wave MI, or stroke. The primary efficacy outcome was target vessel revascularization (TVR). Death was defined as death from any cause. Q-wave MI was defined as documentation of a new abnormal Q-wave after the index revascularization. Stroke, as indicated by neurological deficits, was confirmed by a neurologist on the basis of imaging studies. TVR was defined as any repeat revascularization in any left anterior descending coronary artery or left circumflex coronary artery, as well as in the target segment. All outcomes of interest were confirmed by source documentation collected at each hospital and were centrally adjudicated by an independent group of clinicians.

The SYNTAX score reflects a comprehensive anatomical assessment, with higher scores indicating more complex CAD. As previously defined (13,14), we categorized study patients according to the SYNTAX score; a low score was defined as ≤ 22 , an intermediate score as 23 to 32, and a high score as ≥ 33 . SYNTAX scores were calculated by the independent angiographers blinded to patient information and treatment types. The details of angiographic measurements and the SYNTAX scoring algorithm at the core laboratory have been described elsewhere (22).

Statistical analysis. For each category of the SYNTAX score, patient characteristics pertaining to the index revascularization, including demographic characteristics, the presence or absence of a variety of clinical and coexisting conditions, cardiac presentation, left ventricular function, and lesion characteristics were compared between DES and CABG with the use of the Student *t* tests or Wilcoxon

Abbreviations and Acronyms

CABG	= coronary artery bypass grafting
CAD	= coronary artery disease
DES	= drug-eluting stent(s)
LMCA	= left main coronary artery
MI	= myocardial infarction
PCI	= percutaneous coronary intervention
TVR	= target vessel revascularization

nonparametric tests for continuous variables and the chi-square or Fisher exact test for categorical variables. Five-year cumulative incidence rates of clinical outcomes were estimated using the Kaplan-Meier method and compared using the log-rank test.

To reduce the impact of treatment selection bias and potential confounding in an observational study, we performed rigorous adjustment for differences in baseline characteristics of patients by use of weighted Cox proportional-hazards regression models using inverse-probability-of-treatment weighting (23). With that technique, weights for patients receiving CABG were the inverse of (1 - propensity score), and weights for patients receiving DES were the inverse of the propensity score. Propensity scores were estimated without regard to outcomes, using multiple logistic regression analysis. A full nonparsimonious model was developed that included all variables shown in Table 1. Model discrimination was assessed using c-statistics, and model calibration was assessed using Hosmer-Lemeshow statistics. For each SYNTAX category (low, intermediate, and high risk), a separate propensity score for DES versus CABG was derived. Interactions between the levels of SYNTAX score and treatment strategy were tested by the incorporation of formal interaction terms in the multivariate

Cox model. Weighted Cox proportional-hazards regression models and adjusted survival curves were constructed using inverse probability weights (24). All statistical analyses were performed using SAS version 9.1 (SAS Institute, Inc., Cary, North Carolina), and a 2-sided p value of ≤0.05 was considered to indicate statistical significance.

Results

Population. Between May 2003 and June 2006, 1,474 patients with unprotected LMCA disease were treated with DES implantation (n = 784) or CABG (n = 690). During the study enrollment period, the SYNTAX score algorithm was not available for the physicians. A retrospective retrieval of a baseline angiogram for a detailed measurement of the SYNTAX score was available in 1,146 patients (78%) of the overall cohort (645 patients [82%] in the DES group and 501 patients [73%] in the CABG group). The mean SYNTAX score was significantly lower in the DES group than in the CABG group (24.8 ± 10.9 vs. 38.7 ± 13.3, p < 0.001).

Comparisons of the baseline characteristics between 2 treatment groups in each of the SYNTAX categories are shown in Table 1. In each category of the SYNTAX score,

Table 1 Baseline Characteristics of Patients According to SYNTAX Score

Variable	Low Risk (≤22) (n = 363)			Intermediate Risk (23–32) (n = 292)			High Risk (≥33) (n = 491)		
	DES (n = 302)	CABG (n = 61)	p Value	DES (n = 188)	CABG (n = 104)	p Value	DES (n = 155)	CABG (n = 336)	p Value
Clinical characteristics									
Age (yrs)	58.5 ± 11.2	62.0 ± 9.8	0.02	64.9 ± 10.1	62.8 ± 9.4	0.08	66.1 ± 10.2	64.5 ± 8.8	0.09
Men	202 (66.9%)	47 (77.0%)	0.12	139 (73.9%)	75 (72.1%)	0.74	112 (72.3%)	237 (70.5%)	0.70
Diabetes mellitus	76 (25.2%)	18 (29.5%)	0.48	64 (34.0%)	34 (32.7%)	0.82	69 (44.5%)	137 (40.8%)	0.44
Hypertension	132 (43.7%)	25 (41.0%)	0.70	119 (63.3%)	51 (49.0%)	0.02	95 (61.3%)	179 (53.3%)	0.10
Hyperlipidemia	93 (30.8%)	17 (27.9%)	0.65	58 (30.9%)	31 (29.8%)	0.85	64 (41.3%)	152 (45.2%)	0.41
Current smoker	76 (25.2%)	21 (34.4%)	0.14	53 (28.2%)	30 (28.8%)	0.91	24 (15.5%)	75 (22.3%)	0.08
Previous coronary angioplasty	59 (19.5%)	11 (18.0%)	0.79	45 (23.9%)	11 (10.6%)	0.005	36 (23.2%)	35 (10.4%)	<0.001
Previous MI	18 (6.0%)	7 (11.5%)	0.12	22 (11.7%)	11 (10.6%)	0.77	18 (11.6%)	37 (11.0%)	0.84
Previous congestive heart failure	2 (0.7%)	0 (0%)	>0.99	4 (2.1%)	3 (2.9%)	0.70	5 (3.2%)	12 (3.6%)	0.85
Chronic obstructive pulmonary disease	8 (2.6%)	2 (3.3%)	0.68	5 (2.7%)	1 (1.0%)	0.43	3 (1.9%)	11 (3.3%)	0.56
Cerebrovascular disease	15 (5.0%)	2 (3.3%)	0.75	22 (11.7%)	4 (3.8%)	0.02	17 (11.0%)	29 (8.6%)	0.41
Peripheral vascular disease	3 (1.0%)	2 (3.3%)	0.20	4 (2.1%)	2 (1.9%)	>0.99	4 (2.6%)	21 (6.3%)	0.09
Renal failure	5 (1.7%)	2 (3.3%)	0.33	6 (3.2%)	3 (2.9%)	>0.99	9 (5.8%)	15 (4.5%)	0.52
Left ventricular ejection fraction (%)	61.9 ± 9.1	59.3 ± 10.6	0.08	59.1 ± 11.8	59.1 ± 11.3	0.98	58.3 ± 10.7	55.1 ± 11.6	0.008
Acute coronary syndromes	186 (61.6%)	38 (62.3%)	0.92	113 (60.1%)	71 (68.3%)	0.17	93 (60.0%)	268 (79.8%)	<0.001
EuroSCORE	3.3 ± 2.1	4.0 ± 2.7	0.06	4.1 ± 2.4	4.1 ± 2.1	0.84	4.3 ± 2.6	4.8 ± 2.3	0.04
Angiographic characteristics									
Distal LMCA bifurcation disease	151 (50.0%)	39 (63.9%)	0.047	123 (65.4%)	62 (59.6%)	0.32	100 (64.5%)	171 (50.9%)	0.005
Extent of diseased vessels			0.56*			0.16*			<0.001*
LMCA only	113 (37.4%)	15 (24.6%)		8 (4.3%)	2 (1.9%)		6 (3.9%)	0 (0%)	
LMCA plus single-vessel disease	87 (28.8%)	13 (21.3%)		39 (20.7%)	15 (14.4%)		16 (10.3%)	10 (3.0%)	
LMCA plus double-vessel disease	57 (18.9%)	19 (31.1%)		72 (38.3%)	36 (34.6%)		50 (32.3%)	64 (19.0%)	
LMCA plus triple-vessel disease	45 (14.9%)	14 (23.0%)		69 (36.7%)	51 (49.0%)		83 (53.5%)	262 (78.0%)	
Right coronary artery disease	70 (23.2%)	21 (34.4%)	0.06	99 (52.7%)	73 (70.2%)	0.004	100 (64.5%)	296 (88.1%)	<0.001

Data are expressed as mean ± SD or n (%). *p value for trend.

CABG = coronary artery bypass grafting; DES = drug-eluting stents; EuroSCORE = European System for Cardiac Operative Risk Evaluation; LMCA = left main coronary artery; SYNTAX = Synergy Between PCI With Taxus and Cardiac Surgery.

there were some imbalances of baseline clinical and angiographic features between the 2 treatment groups with statistical significance. Overall, with increasing SYNTAX score, patients had higher risk clinical and angiographic profiles.

Procedural characteristics of the study patients were as follows: 1) among DES patients, 78% received sirolimus-eluting stents and 22% received paclitaxel-eluting stents; 2) the mean number of stents implanted in a patient's LMCA lesions was 1.2 ± 0.5 , the mean total length of the stents was 32.8 ± 22.0 mm, and the mean stent diameter was 3.4 ± 0.2 mm; 3) among CABG patients, 46% underwent off-pump surgery; and 4) 96% underwent revascularization of the left anterior descending coronary artery with an internal thoracic artery. Complete revascularization was achieved in 64% of DES patients and 80% of CABG patients.

Outcomes. The median follow-up duration was 55.1 months (interquartile range: 45.8 to 65.5 months) in the overall patient group. Complete follow-up for major clinical events was obtained in 98.3% of the overall cohort (98.4% for the DES group and 98.0% for the CABG group; $p = 0.57$).

During 5 years of follow-up, the observed long-term rates of death and the composite of death, Q-wave MI, or stroke were significantly lower in the DES group than in the CABG group in patients with low SYNTAX scores (Table 2, Fig. 1). These safety outcomes were similar between the 2 treatment groups among patients with intermediate scores, but there was evidence of a nonsignificant increase in the rate of safety outcomes associated with DES compared with CABG in patients with high scores. The advantage of CABG was quite consistent for TVR.

After adjustment of baseline covariates using inverse-probability-of-treatment weighting in each of the SYNTAX

score categories, the adjusted hazard ratios for death and serious composite outcomes favored DES treatment in patients with low SYNTAX scores; in contrast, the adjusted hazard ratios for these safety outcomes favored CABG in patients with high scores (Table 2, Fig. 2). When we assessed the effect on outcomes of treatment strategy and its interaction with SYNTAX score category, treatment effects for death and composite outcomes, but not TVR, were modified by the level of SYNTAX score (interaction $p = 0.047$ for death, interaction $p = 0.08$ for composite outcome, and interaction $p = 0.45$ for TVR).

In the DES group, the rates of death and the composite of death, Q-wave MI, or stroke were significantly increased in patients with high SYNTAX scores compared with those with low or intermediate scores. In the CABG group, however, there was no uniform increase of safety outcomes according to SYNTAX score.

In the overall population, the unadjusted risks for death and the composite of death, Q-wave MI, or stroke were significantly lower in the DES group than in the CABG group, whereas the rate of TVR was significantly higher in the DES group (Table 3). After adjustment of the SYNTAX score, however, the 5-year risks for death and the composite of death, Q-wave MI, or stroke were similar in the 2 groups, but the adjusted risk for TVR was consistently higher with DES. Similar results were observed even after adjustments of the SYNTAX score and all potentially explanatory factors for clinical outcomes.

Discussion

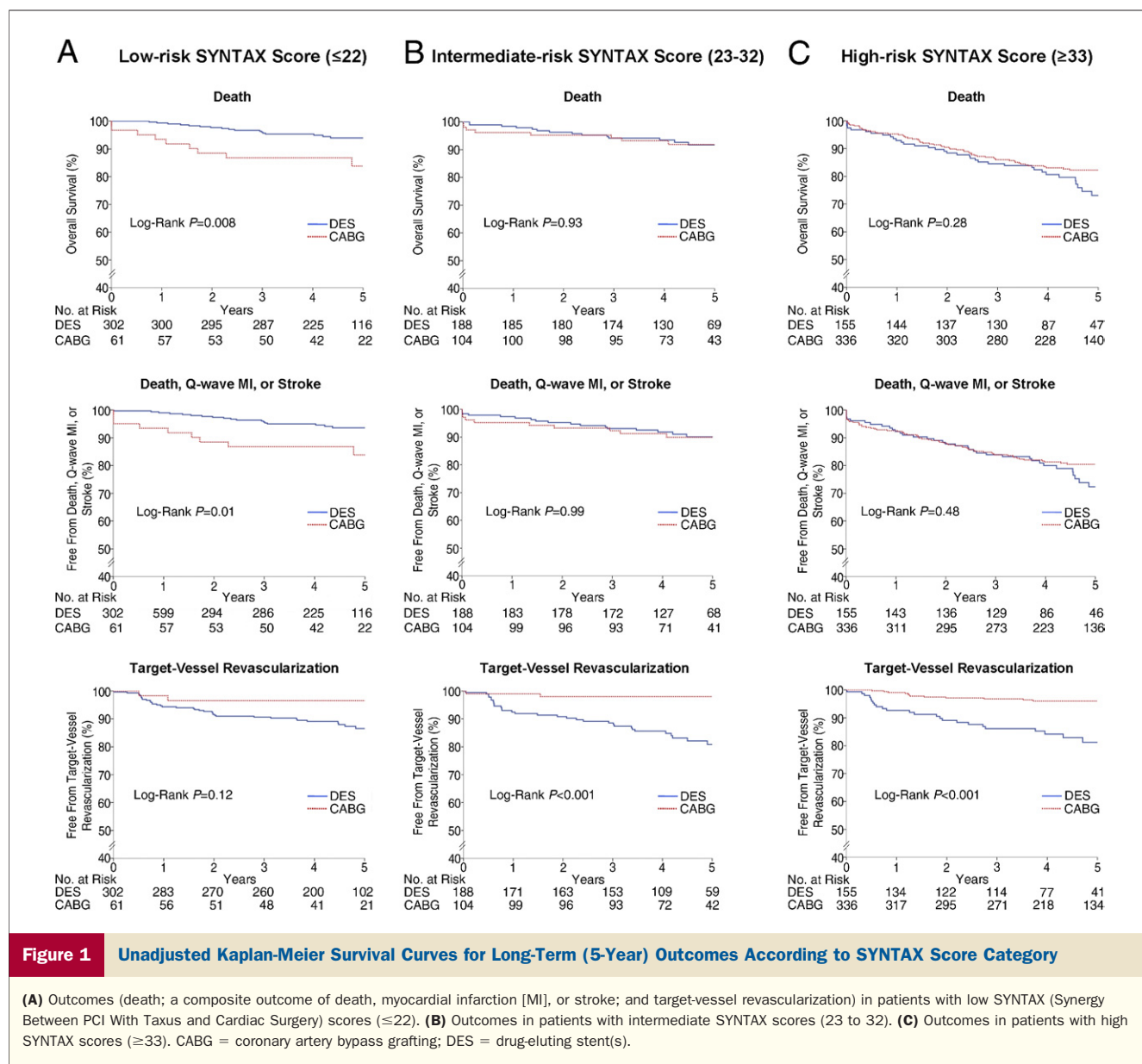
In this large-scale, multicenter study, which included 1,146 patients with unprotected LMCA disease, we found that the adjusted long-term (5-year) risks for death and a composite of serious outcomes (death, Q-wave MI, or stroke) favored DES implantation over CABG in patients

Table 2 HRs for Clinical Outcomes After DES Implantation Compared With CABG, According to SYNTAX Score Category*

Outcome	n/Total Number of Events		Cumulative Event Rate at 5 Yrs (%)		Unadjusted		Adjusted by Inverse-Probability-of-Treatment Weights†	
	DES	CABG	DES	CABG	HR (95% CI)	p Value	HR (95% CI)	p Value
Low risk (SYNTAX score ≤ 22)								
Death	302	61	6.1	16.2	0.35 (0.16-0.79)	0.01	0.52 (0.21-1.28)	0.15
Composite outcome‡	18	9	6.4	16.2	0.38 (0.17-0.84)	0.02	0.54 (0.22-1.34)	0.18
TVR	37	3	13.4	3.5	2.46 (0.76-7.98)	0.13	2.45 (0.75-8.08)	0.14
Intermediate risk (SYNTAX score 23-32)								
Death	188	104	8.3	8.1	1.04 (0.44-2.45)	0.93	1.00 (0.38-2.62)	0.99
Composite outcome‡	18	10	9.9	10.1	0.99 (0.46-2.15)	0.99	1.01 (0.42-2.45)	0.97
TVR	31	2	19.2	2.0	9.06 (2.17-37.84)	0.003	10.99 (2.56-47.33)	0.001
High risk (SYNTAX score ≥ 33)								
Death	155	336	26.9	17.8	1.26 (0.83-1.90)	0.28	1.46 (0.92-2.30)	0.11
Composite outcome‡	36	70	27.6	19.5	1.15 (0.77-1.73)	0.49	1.36 (0.87-2.12)	0.18
TVR	25	12	18.8	4.0	4.95 (2.49-9.86)	<0.001	5.24 (2.28-12.06)	<0.001

*HRs are for the DES group relative to the CABG group. †p value for the treatment by covariate (SYNTAX score category) interaction: interaction $p = 0.047$ for death, interaction $p = 0.08$ for composite outcome, interaction $p = 0.45$ for TVR. ‡Death, Q-wave MI, or stroke.

CI = confidence interval; HR = hazard ratio; TVR = target vessel revascularization; other abbreviations as in Table 1.



with low risk for lesion complexity, as measured by the SYNTAX score. Otherwise, the long-term risks for death and the composite of serious outcomes favored CABG over PCI in patients with high risk for lesion complexity. The rates of TVR were consistently higher with DES than CABG, regardless of SYNTAX score.

Compared with clinical trials, observational studies such as ours may more accurately reflect “real-world” experience in treating patients with LMCA disease. As with all observational research, however, patient selection bias may have a profound impact on outcomes, and there are many considerations when one is choosing a treatment intervention (4). Many patients with LMCA disease have concomitant multivessel disease. It is likely that patients with less complex anatomy of atherosclerotic CAD tend to be more often referred for PCI, whereas those with more severe

disease tend to be preferentially considered for bypass surgery. Sometimes, patients with very complex angiographic features have contraindications or are deemed ineligible for PCI. As such, because treatment type is considerably correlated with the extent of atherosclerotic disease burden, it is difficult to design a convincing observational study that compares PCI with CABG for outcomes that are related to disease burden. These factors therefore may cause potential bias due to confounding by indication in comparative clinical strategies studies (25).

Although several observational studies have attempted to correct for atherosclerotic disease burden with covariates such as the extent of diseased vessels (i.e., a count of diseased vessels), this is a relatively generic concept that lacks specificity to measure the extent of atherosclerotic burden of disease. Therefore, adjustment for high-quality

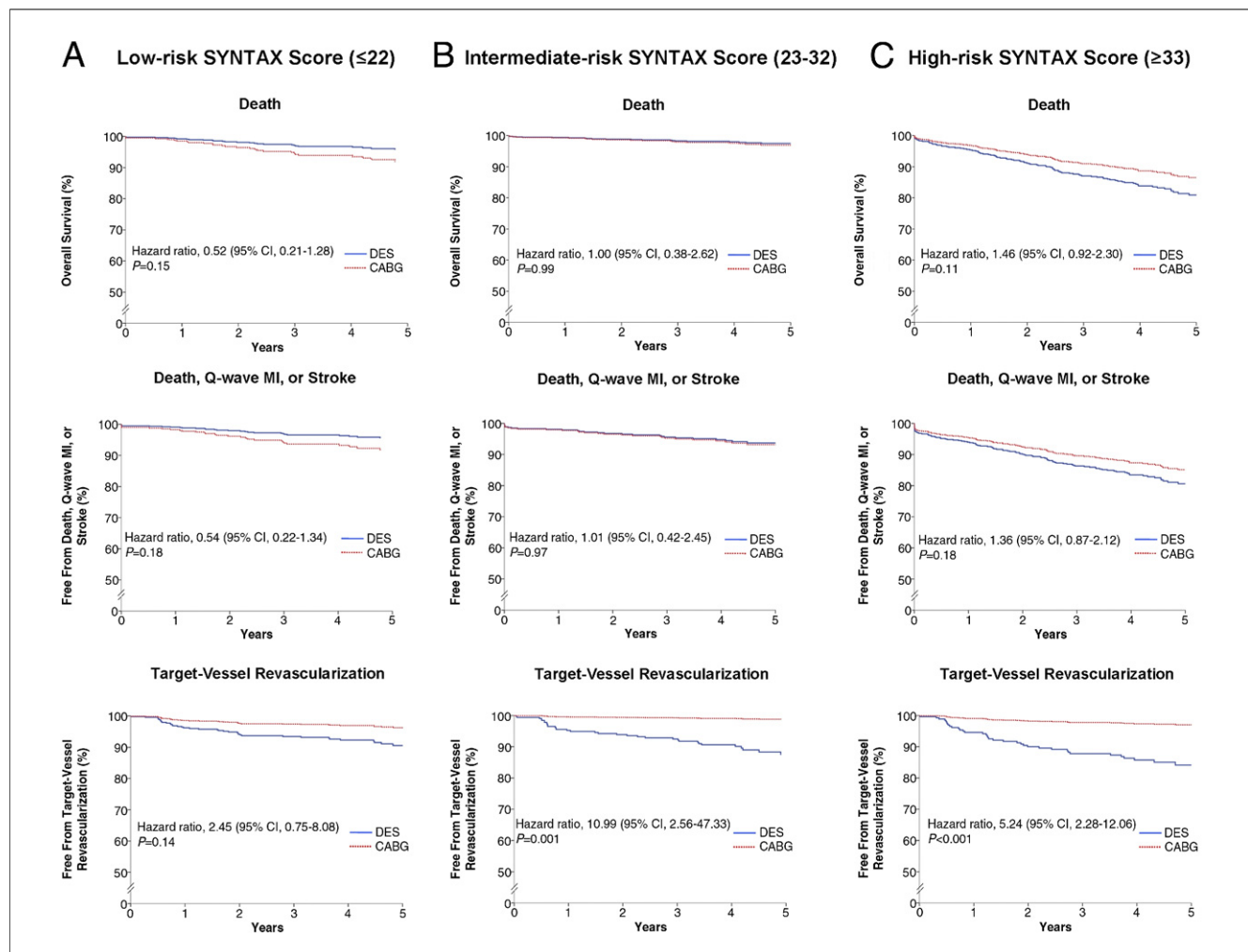


Figure 2 Adjusted Survival Curves for Long-Term (5-Year) Outcomes According to SYNTAX Score Category

(A) Outcomes (death; a composite outcome of death, MI, or stroke; and target-vessel revascularization) in patients with low SYNTAX scores (≤ 22). (B) Outcomes in patients with intermediate SYNTAX scores (23 to 32). (C) Outcomes in patients with high SYNTAX scores (≥ 33). Abbreviations as in Figure 1.

anatomical data representing atherosclerotic burden might minimize confounding by indication. The SYNTAX score is a detailed anatomical scoring system that reflects atherosclerotic disease burden. In our large cohort of patients with unprotected LMCA disease, even after comprehensive anatomical adjustment using the SYNTAX score, PCI with DES implantation showed similar long-term safety outcomes, but inferior effectiveness outcomes, compared with CABG.

The recent SYNTAX trial reported that patients with the least extensive CAD had better outcomes after DES treatment, whereas patients with the most extensive disease had better outcomes after CABG among those with 3-vessel or LMCA disease (13,14). However, the follow-up in this study was limited in duration, which may have resulted in a disadvantage for CABG, because the apparent benefits of surgery over PCI are usually not fully evident until 1 to 5 years after the procedure (26). Furthermore, the long-term

Table 3 Cox Proportional-Hazards Analyses of Time to Clinical Events Among Overall Patient Group*

Outcome	Unadjusted		Adjusted for SYNTAX Score		Adjusted for SYNTAX Score and All Covariates†	
	HR (95% CI)	p Value	HR† (95% CI)	p Value	HR† (95% CI)	p Value
Death	0.63 (0.46-0.87)	0.006	1.08 (0.74-1.56)	0.70	0.92 (0.63-1.35)	0.66
Composite outcome‡	0.61 (0.45-0.83)	0.002	1.03 (0.72-1.48)	0.85	0.91 (0.63-1.31)	0.62
TVR	4.40 (2.62-7.38)	<0.001	5.35 (3.04-9.44)	<0.001	5.84 (3.26-10.48)	<0.001

*HRs are for the DES group relative to the CABG group. †For a list of covariates, see Table 1. ‡Death, Q-wave MI, or stroke. Abbreviations as in Tables 1 and 2.

safety of DES has been questioned by recent reports suggesting increased risks for late stent thrombosis, mortality, and MI (27,28). Therefore, very long-term assessment of safety and efficacy of DES treatment, compared with standard CABG, in a large cohort of patients with unprotected LMCA disease is clinically essential. Consistent with previous data and our hypothesis, we found an important relationship between a more detailed measure of the complexity of atherosclerotic CAD and long-term (5-year) treatment effects. These results suggested that the extent of atherosclerotic burden of CAD be considered an important clinical factor affecting the choice between CABG and DES and as a determinant for predicting long-term outcomes after LMCA revascularization, suggesting an important role of the SYNTAX score as an aid in decision making for patient selection and risk stratification in clinical practice.

Study limitations. First, the inherent limitations of a nonrandomized, registry study should be acknowledged. The choice of revascularization was at the discretion of the treating physician and/or patient. Despite rigorous adjustment for selection bias and confounding with the inverse-probability-of-treatment weighting method, hidden biases or residual confounding may have affected the results. Therefore, our findings should be confirmed or refuted through large, randomized clinical trials with long-term follow-up. Second, our analysis was underpowered to detect significant differences in mortality and serious composite outcomes. Nonsignificant trends for these outcomes might have been significant with a larger cohort of patients. Third, in the present analysis, SYNTAX scoring was performed retrospectively and only in 78% of cases, introducing at least the potential of an unmeasured bias. Finally, because this study evaluated the first generation of DES, the direct application of these findings to second-generation or next-generation DES may be limited.

Conclusions

In patients with unprotected LMCA disease, according to the anatomical complexity of concomitant CAD measured by the SYNTAX score, PCI with DES compares favorably with CABG for patients with a low burden of disease with regard to serious safety outcomes (death or the composite of death, Q-wave MI, or stroke). Conversely, CABG compares favorably with PCI for patients with a high atherosclerotic burden of disease.

Reprint requests and correspondence: Dr. Seung-Jung Park, Division of Cardiology, University of Ulsan College of Medicine, Asan Medical Center, 388-1 Poongnap-dong, Songpa-gu, Seoul 138-736, Korea. E-mail: sjpark@amc.seoul.kr.

REFERENCES

1. Barner HB. Operative treatment of coronary atherosclerosis. *Ann Thorac Surg* 2008;85:1473-82.
2. Serruys PW, Kutryk MJ, Ong AT. Coronary-artery stents. *N Engl J Med* 2006;354:483-95.
3. Frutkin AD, Lindsey JB, Mehta SK, et al. Drug-eluting stents and the use of percutaneous coronary intervention among patients with class I indications for coronary artery bypass surgery undergoing index revascularization: analysis from the NCDR (National Cardiovascular Data Registry). *J Am Coll Cardiol Intv* 2009;2:614-21.
4. Park SJ, Park DW. Percutaneous coronary intervention with stent implantation versus coronary artery bypass surgery for treatment of left main coronary artery disease: is it time to change guidelines? *Circ Cardiovasc Intervent* 2009;2:59-68.
5. Hannan EL, Racz MJ, Walford G, et al. Long-term outcomes of coronary-artery bypass grafting versus stent implantation. *N Engl J Med* 2005;352:2174-83.
6. Malenka DJ, Leavitt BJ, Hearne MJ, et al. Comparing long-term survival of patients with multivessel coronary disease after CABG or PCI: analysis of BARI-like patients in northern New England. *Circulation* 2005;112:I371-6.
7. Smith PK, Califf RM, Tuttle RH, et al. Selection of surgical or percutaneous coronary intervention provides differential longevity benefit. *Ann Thorac Surg* 2006;82:1420-8.
8. Javadi A, Steinberg DH, Buch AN, et al. Outcomes of coronary artery bypass grafting versus percutaneous coronary intervention with drug-eluting stents for patients with multivessel coronary artery disease. *Circulation* 2007;116:I200-6.
9. Hannan EL, Wu C, Walford G, et al. Drug-eluting stents vs. coronary-artery bypass grafting in multivessel coronary disease. *N Engl J Med* 2008;358:331-41.
10. Park DW, Yun SC, Lee SW, et al. Long-term mortality after percutaneous coronary intervention with drug-eluting stent implantation versus coronary artery bypass surgery for the treatment of multivessel coronary artery disease. *Circulation* 2008;117:2079-86.
11. Kim YH, Park DW, Kim WJ, et al. Impact of the extent of coronary artery disease on outcomes after revascularization for unprotected left main coronary artery stenosis. *J Am Coll Cardiol* 2010;55:2544-52.
12. Park DW, Seung KB, Kim YH, et al. Long-term safety and efficacy of stenting versus coronary artery bypass grafting for unprotected left main coronary artery disease: 5-year results from the MAIN-COMPARE (Revascularization for Unprotected Left Main Coronary Artery Stenosis: Comparison of Percutaneous Coronary Angioplasty Versus Surgical Revascularization) registry. *J Am Coll Cardiol* 2010;56:117-24.
13. Serruys PW, Morice MC, Kappetein AP, et al. Percutaneous coronary intervention versus coronary-artery bypass grafting for severe coronary artery disease. *N Engl J Med* 2009;360:961-72.
14. Morice MC, Serruys PW, Kappetein AP, et al. Outcomes in patients with de novo left main disease treated with either percutaneous coronary intervention using paclitaxel-eluting stents or coronary artery bypass graft treatment in the Synergy Between Percutaneous Coronary Intervention with TAXUS and Cardiac Surgery (SYNTAX) trial. *Circulation* 2010;121:2645-53.
15. Capodanno D, Capranzano P, Di Salvo ME, et al. Usefulness of SYNTAX score to select patients with left main coronary artery disease to be treated with coronary artery bypass graft. *J Am Coll Cardiol Intv* 2009;2:731-8.
16. Capodanno D, Di Salvo ME, Cincotta G, Miano M, Tamburino C. Usefulness of the SYNTAX score for predicting clinical outcome after percutaneous coronary intervention of unprotected left main coronary artery disease. *Circ Cardiovasc Interv* 2009;2:302-8.
17. Wykrzykowska JJ, Garg S, Girasis C, et al. Value of the SYNTAX score for risk assessment in the all-comers population of the randomized multicenter LEADERS (Limus Eluted From a Durable Versus Erodable Stent Coating) trial. *J Am Coll Cardiol* 2010;56:272-7.
18. Seung KB, Park DW, Kim YH, et al. Stents versus coronary-artery bypass grafting for left main coronary artery disease. *N Engl J Med* 2008;358:1781-92.
19. Park SJ, Lee CW, Kim YH, et al. Technical feasibility, safety, and clinical outcome of stenting of unprotected left main coronary artery bifurcation narrowing. *Am J Cardiol* 2002;90:374-8.
20. Park SJ, Kim YH, Lee BK, et al. Sirolimus-eluting stent implantation for unprotected left main coronary artery stenosis: comparison with bare metal stent implantation. *J Am Coll Cardiol* 2005;45:351-6.

21. Eagle KA, Guyton RA, Davidoff R, et al. ACC/AHA 2004 guideline update for coronary artery bypass graft surgery: a report of the American College of Cardiology/American Heart Association Task Force on Practice Guidelines (Committee to Update the 1999 Guidelines for Coronary Artery Bypass Graft Surgery). *Circulation* 2004; 110:e340-437.
22. Kim YH, Park DW, Kim WJ, et al. Validation of SYNTAX (Synergy Between PCI With Taxus and Cardiac Surgery) score for prediction of outcomes after unprotected left main coronary revascularization. *J Am Coll Cardiol Intv* 2010;3:612-23.
23. Robins JM, Hernan MA, Brumback B. Marginal structural models and causal inference in epidemiology. *Epidemiology* 2000;11:550-60.
24. Cole SR, Hernan MA. Adjusted survival curves with inverse probability weights. *Comput Methods Programs Biomed* 2004;75:45-9.
25. Psaty BM, Siscovick DS. Minimizing bias due to confounding by indication in comparative effectiveness research: the importance of restriction. *JAMA* 2010;304:897-8.
26. Taggart DP, Kaul S, Boden WE, et al. Revascularization for unprotected left main stem coronary artery stenosis: stenting or surgery. *J Am Coll Cardiol* 2008;51:885-92.
27. Daemen J, Wenaweser P, Tsuchida K, et al. Early and late coronary stent thrombosis of sirolimus-eluting and paclitaxel-eluting stents in routine clinical practice: data from a large two-institutional cohort study. *Lancet* 2007;369:667-78.
28. Lagerqvist B, James SK, Stenestrand U, Lindback J, Nilsson T, Wallentin L. Long-term outcomes with drug-eluting stents versus bare-metal stents in Sweden. *N Engl J Med* 2007;356:1009-19.

Key Words: coronary disease ■ revascularization ■ stents ■ surgery.