

# F3/Contactin Acts as a Functional Ligand for Notch during Oligodendrocyte Maturation

Qi-Dong Hu,<sup>1,2</sup> Beng-Ti Ang,<sup>1,2,3,16</sup> Meliha Karsak,<sup>4,16</sup> Wei-Ping Hu,<sup>5,16</sup> Xiao-Ying Cui,<sup>1,16</sup> Tanya Duka,<sup>1</sup> Yasuo Takeda,<sup>6</sup> Wendy Chia,<sup>1</sup> Natesan Sankar,<sup>7</sup> Yee-Kong Ng,<sup>2</sup> Eng-Ang Ling,<sup>2</sup> Thomas Maciag,<sup>8</sup> Deena Small,<sup>8</sup> Radianna Trifonova,<sup>8</sup> Raphael Kopan,<sup>9</sup> Hideyuki Okano,<sup>10</sup> Masato Nakafuku,<sup>11</sup> Shigeru Chiba,<sup>12</sup> Hisamaru Hirai,<sup>12</sup> Jon C. Aster,<sup>13</sup> Melitta Schachner,<sup>4</sup> Catherine J. Pallen,<sup>14</sup> Kazutada Watanabe,<sup>6,15,\*</sup> and Zhi-Cheng Xiao<sup>1,2,\*</sup>

<sup>1</sup>Department of Clinical Research  
Singapore General Hospital  
169608 Singapore

<sup>2</sup>Department of Anatomy  
National University of Singapore  
117597 Singapore

<sup>3</sup>Department of Neurosurgery  
National Neuroscience Institute  
306433 Singapore

<sup>4</sup>Zentrum für Molekulare Neurobiologie  
University of Hamburg  
Hamburg 20251, Germany

<sup>5</sup>Department of Obstetrics and Gynecology  
Singapore General Hospital  
169608 Singapore

<sup>6</sup>Department of Cell Recognition  
Tokyo Metropolitan Institute of Gerontology  
Tokyo 173-0015, Japan

<sup>7</sup>National Cancer Center  
169610 Singapore

<sup>8</sup>Center for Molecular Medicine  
Maine Medical Center Research Institute  
Scarborough, Maine 04469

<sup>9</sup>Department of Molecular Biology and  
Pharmacology and the Department of Medicine  
Division of Dermatology  
Washington University School of Medicine  
St. Louis, Missouri 63110

<sup>10</sup>Department of Physiology  
Keio University School of Medicine  
Tokyo 160-8582, Japan

<sup>11</sup>Department of Neurobiology  
The University of Tokyo Graduate  
School of Medicine  
Tokyo 113-0033, Japan

<sup>12</sup>Departments of Cell Therapy, Transplantation  
Medicine and Hematology, and Oncology  
University of Tokyo  
Tokyo 113-8655 Japan

<sup>13</sup>Department of Pathology  
Brigham and Women's Hospital  
Harvard Medical School  
Boston, Massachusetts 02115

<sup>14</sup>Department of Pediatrics  
University of British Columbia

BC Research Institute for Children's  
and Women's Health  
Vancouver, British Columbia V5Z 4H4, Canada  
<sup>15</sup>Department of Bioengineering  
Nagaoka University of Technology  
Nagaoka 9402188, Japan

## Summary

Axon-derived molecules are temporally and spatially required as positive or negative signals to coordinate oligodendrocyte differentiation. Increasing evidence suggests that, in addition to the inhibitory Jagged1/Notch1 signaling cascade, other pathways act via Notch to mediate oligodendrocyte differentiation. The GPI-linked neural cell recognition molecule F3/contactin is clustered during development at the paranodal region, a vital site for axoglial interaction. Here, we show that F3/contactin acts as a functional ligand of Notch. This *trans*-extracellular interaction triggers  $\gamma$ -secretase-dependent nuclear translocation of the Notch intracellular domain. F3/Notch signaling promotes oligodendrocyte precursor cell differentiation and upregulates the myelin-related protein MAG in OLN-93 cells. This can be blocked by dominant negative Notch1, Notch2, and two Deltex1 mutants lacking the RING-H2 finger motif, but not by dominant-negative RBP-J or Hes1 antisense oligonucleotides. Expression of constitutively active Notch1 or Notch2 does not upregulate MAG. Thus, F3/contactin specifically initiates a Notch/Deltex1 signaling pathway that promotes oligodendrocyte maturation and myelination.

## Introduction

Myelination in the vertebrate central nervous system (CNS) is essential for rapid impulse conduction. Studies of oligodendrocyte precursors (OPCs) in conditional Notch1 null mice reveal ectopic immature oligodendrocytes (OLs) in the CNS (Genoud et al., 2002). Rapid generation of OLs and concomitant myelination of rat retinal ganglion cell axons parallels the sharp decrease of the axonal ligand of Notch, Jagged1, which commences around postnatal day 6 (P6) (Wang et al., 1998), suggesting that Jagged1/Notch interaction inhibits OPC differentiation. However, the molecular mechanisms timing OPC differentiation to OLs and subsequent OL maturation remain poorly defined.

Notch is a type I transmembrane protein mediating cell fate selection via lateral inhibition. Its core signaling mechanism involves Regulated Intramembrane Proteolysis (RIP) (Ebinu and Yankner, 2002). Upon binding the classic ligands, Delta, Serrate/Jagged and Lag-2 (collectively called DSL), Notch undergoes two proteolytic cleavages that release its intracellular domain (NICD). NICD translocates to the nucleus and interacts with RBP-J transcription factor to activate, for instance, *Hes* genes (Martinez Arias et al., 2002). In addition, Deltex1

\*Correspondence: gcrzc@sgh.com.sg (Z.C.X.), kazutada@vos.nagaokaut.ac.jp (K.W.)

<sup>16</sup>These authors contributed equally to this work.

(DTX1) has been identified as a cytoplasmic downstream element of the Notch signaling pathway. DTX homologs share three common domains, namely, the N-terminal region and the proline-rich and RING-H2 finger motifs (Kishi et al., 2001). Particularly, the N-terminal region interacts with NICD. Notch signaling via DTX1 represses JNK signaling, a pathway regulating OL differentiation, and cooperates with Wingless signaling (Martinez Arias et al., 2002). Although several studies imply the existence of an extracellular ligand that activates Notch/DTX1 signaling, the putative ligand has not yet been identified.

F3/contactin is a glycosyl phosphatidylinositol (GPI)-anchored neural cell adhesion molecule of the immunoglobulin superfamily (Revest et al., 1999). It is a neuronal receptor for the oligodendrocyte-related extracellular matrix glycoprotein tenascin-R via epidermal growth factor (EGF)-like repeats (Xiao et al., 1996). F3 interacts in *trans* with RPTP $\zeta/\beta$  (receptor protein tyrosine phosphatase) to promote neurite outgrowth (Sakurai et al., 1997) and in *cis* with RPTP $\alpha$  (Zeng et al., 1999) to transduce extracellular signals to myelination-related Fyn kinase (Umemori et al., 1994). Additionally, F3 colocalizes and interacts in *cis* with Caspr/Paranodin and in *trans* with glial neurofascin 155 at the paranode (Girault and Peles, 2002), a key site of axoglial contact for myelination. F3 null mice exhibit partially disrupted paranodal structure and die by P18 (Berglund et al., 1999), suggesting that F3 may be critical for development. In the present study, we demonstrate that F3 is a physiological ligand of Notch and that the signaling via DTX1 promotes OL development.

## Results

### Notch Is the Oligodendroglial Surface Binding Partner of F3

Axonal F3 congregates at the paranode, a potential site for F3 to interact with myelinating glia (Girault and Peles, 2002). Notch is a plausible binding partner since its extracellular portion possesses many EGF-like repeats (Martinez Arias et al., 2002) and is abundantly expressed on maturing OLs (Lardelli et al., 1994; Wang et al., 1998). To investigate this potential interaction, we utilized an OL cell line OLN-93 (OLN) that was derived from spontaneously transformed cells in rat brain glial cultures and resembles maturing OLs (Richter-Landsberg and Heinrich, 1996). OLN cells no longer express the progenitor cell surface marker A2B5, and are positive for only one isoform of myelin basic protein (MBP) (~14 kDa), characteristic of immature OLs. Immunocytochemistry confirmed that OLN cells express Notch1 and Notch2 on their surface (Figures 1Aa and 1Ab).

To investigate if F3 could bind to Notch, we first performed cell adhesion assays (Xiao et al., 1996). After plating, OLN cells adhered readily to F3 substrate (Figure 1Ac), but not to CHL1-Fc (CHL1), another neural cell adhesion molecule (Holm et al., 1996) (Figure 1Ad). Adhesion was blocked by preincubation with F3 (Figure 1Aj), Notch1, or Notch2 antibodies (Figures 1Ae, 1Af, and 1Aj), but not with preimmune serum or antigen-depleted antibodies to Notch1 or Notch2 (Figures 1Ag, 1Ah, and 1Ai). We also used murine Notch1 (mN1)-trans-

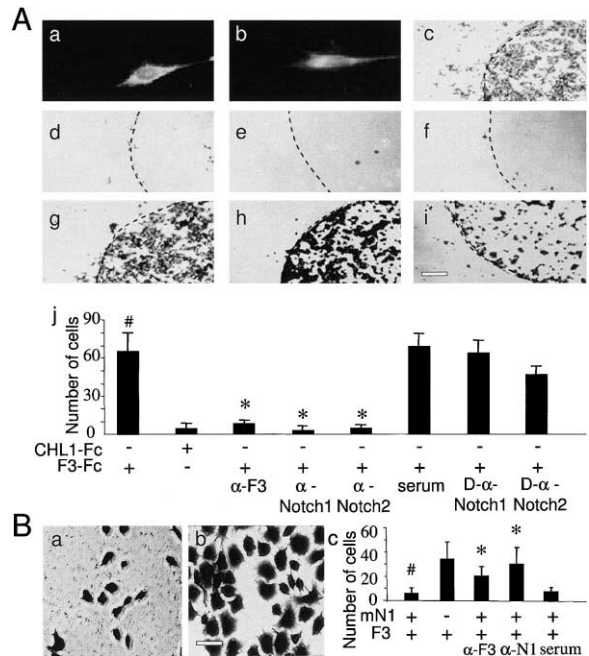


Figure 1. Notch and F3 Are Binding Partners

(A) Cell adhesion assay. OLN cells were labeled with  $\alpha$ -Notch1 (a) or  $\alpha$ -Notch2 (b). OLN cells were plated on dishes spotted with F3 (c and e–i) or CHL1 (d). Cells were untreated or pretreated prior to plating with  $\alpha$ -Notch1 (e) or  $\alpha$ -Notch2 (f), preimmune serum (serum) (g), or with antigen-depleted  $\alpha$ -Notch1 (D- $\alpha$ -Notch1) (h) or  $\alpha$ -Notch2 (D- $\alpha$ -Notch2) (i). Dotted lines depict the edges of the protein-Fc spots. Adherent cells were visualized by staining with Coomassie blue. (j) Quantification of OLN cell adherence to F3 substrate and the effects of blocking antibodies. #,  $p < 0.05$  compared with CHL1; \*,  $p < 0.05$  compared with preimmune serum. Scale bar in (i): 20  $\mu$ m for (a) and (b); 120  $\mu$ m for (c)–(i).

(B) Cell repulsion assay. mN1- (a) or mock-transfected HeLa cells (b) were plated on F3-coated dishes. Adherent cells were stained with Coomassie Blue. (c) Quantification of HeLa cell adherence to F3 and the effects of blocking antibodies. In some experiments, mN1-transfected HeLa cells were pretreated with  $\alpha$ -F3 or  $\alpha$ -Notch1, or with preimmune serum (serum). #,  $p < 0.05$  compared with mock-transfected HeLa cells; \*,  $p < 0.05$  compared with preimmune serum. Scale bar in (b): 15  $\mu$ m for (a) and (b).

Bar graphs (A), (B) represent the number of adherent cells (mean  $\pm$  SD).

fected HeLa cells (Logeat et al., 1998) in cell repulsion assays (Figure 1B). mN1-transfected HeLa cells were repelled from F3 (Figure 1Ba) compared with mock-transfected HeLa cells (Figure 1Bb). Repulsion was reversed by pretreating the cells with F3 or Notch1 antibodies, but not with preimmune serum (Figure 1Bc). These studies suggest that Notch interacts with F3.

### F3 Binds to Specific Sites on Notch1

To confirm F3/Notch interaction, rat brain membrane samples were immunoprecipitated with Notch1 or Notch2 antibodies. Immunoblotting of the precipitates using F3 antibody showed that they contained F3 (Figure 2Aa). In a reciprocal assay, an F3 antibody precipitate was probed with Notch1 or Notch2 antibodies (Figure 2Ab). These results indicate that Notch and F3 can form complexes.

To identify the specific binding site(s) on Notch1, we

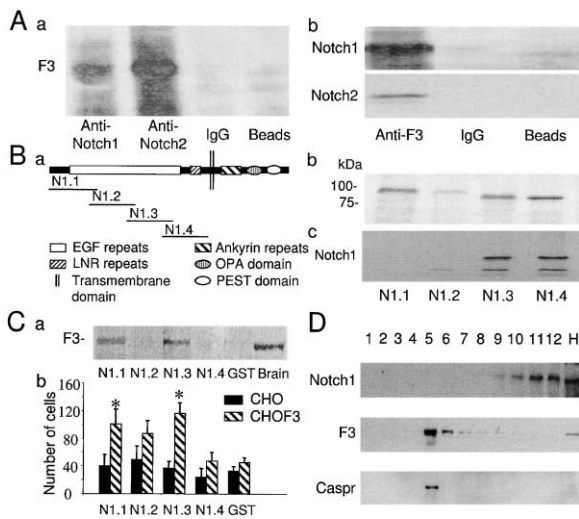


Figure 2. Notch and F3 Associate as a Protein Complex

(A) F3 coimmunoprecipitates with Notch1 or Notch2. (a) Immunoprecipitates from rat brain lysate were prepared using  $\alpha$ -Notch1,  $\alpha$ -Notch2, nonimmune IgG, or unconjugated beads, and were probed with  $\alpha$ -F3. (b) Reciprocal assays used  $\alpha$ -F3 to capture the protein complex, followed by immunoblotting with  $\alpha$ -Notch1 or  $\alpha$ -Notch2 to detect the binding partner.

(B) Subcloning of the Notch1 extracellular domain. (a) Schematic diagram of Notch1 and its subcloned fragments. (b and c) Coomassie Blue staining and  $\alpha$ -Notch1 immunoblot of the four fragments, respectively.

(C) F3 binds to specific domains of Notch1. (a) The GST-Notch1 extracellular fragments (N1.1, N1.2, N1.3, and N1.4) or GST alone were used in a GST pull-down assay with rat brain lysate. The precipitates and rat brain lysate (right lane) were probed for F3. (b) Quantification of mock- and F3-transfected CHO cells adhering to culture dishes coated with the four GST fusion fragments or GST alone. Bars represent the number of adherent cells (mean  $\pm$  SD). \*,  $p < 0.05$  compared with GST.

(D) Lipid raft analysis. F3 was mainly localized to the fifth fraction, while Notch1 was enriched in fractions 9–12. Caspr was used as a positive control to mark lipid raft fractions. H: Total homogenate.

divided the mouse Notch1 extracellular domain into four equal-sized fragments termed N1.1, N1.2, N1.3, and N1.4 (Figure 2Ba) and produced them as recombinant GST fusion proteins (Figures 2Bb and 2Bc). The Notch1 antibody used in the aforementioned cellular studies recognized only N1.3 and N1.4. GST pull-down assays with rat brain lysates revealed that F3 associated with N1.1 and N1.3 (Figure 2Ca). To confirm this, F3-transfected CHO cells (Gennarini et al., 1991) were seeded onto culture dishes coated with the four GST fusion proteins. Cells bound predominantly to N1.1 and N1.3. Mock-transfected CHO cells did not bind (Figure 2Cb).

#### F3 and Notch1 Are Not Colocalized in Lipid Rafts

F3 is a surface molecule localized in lipid rafts of OLN (Krämer et al., 1999). To ascertain whether F3/Notch interaction could occur in *cis* in these microdomains, they were isolated from P15 rat cerebral cortex. Both F3 and Caspr were detected in fraction 5 of the sucrose density gradient as reported (Faivre-Sarrailh et al., 2000), while Notch1 was found only in fractions 9–12 enriched in cytoskeleton-associated proteins (Figure 2D). The same results were obtained using adult rat cerebral cor-

tex (not shown). Thus, F3 and Notch1 are unlikely to complex laterally within lipid rafts. Altogether, these observations suggest that F3 is a *trans* binding partner of Notch.

#### NICD Translocates to the Nucleus after Notch Interacts with F3

The immediate consequence of Notch activation is the release and transport of NICD to the nucleus (Schroeter et al., 1998). To determine if F3 could effect this, myc-tagged full-length mouse Notch1 (mNotch1-myc) was transfected into OLN cells. Cells were treated with different proteins and immunolabeled for NICD using NICD antibody (Logeat et al., 1998). In F3-treated cells, concentrated NICD staining was observed in the nuclei (Figure 3Aa), similar to Jagged1-induced NICD translocation (Figure 3Ab). BSA failed to trigger this event (Figure 3Ac). Preincubation with Notch1 EGF antibody (which cross-reacts with Notch2, not shown) abolished F3-induced NICD translocation (Figure 3Ad). Brefeldin A and monensin (not shown), compounds that inhibit the membrane insertion of Notch1 (Schroeter et al., 1998), also prevented NICD translocation. Cell treatment with increasing concentrations of F3 or Jagged1 led to a similar concentration-dependent increase in nuclear clustering of NICD (Figure 3Ae). OLN cocultured with either F3- or Jagged1- but not mock-transfected CHO cells also resulted in production of Notch2 intracellular domain (ICD) (Figure 3Af). Notch2 ICD antibody was not cross-reactive with Notch1 ICD (not shown). These results demonstrate that F3, like Jagged1, can activate Notch1 and Notch2, leading to subsequent nuclear translocation of NICD.

#### F3 Induces Notch Intramembrane Cleavage at the S3 Site

As a prerequisite for activation, Notch undergoes  $\gamma$ -secretase-dependent RIP at the S3 site (V1744) (Schroeter et al., 1998; Huppert et al., 2000). To clarify the nature of F3-induced cleavage, mNotch1-myc transfected OLN cells were preincubated with  $\gamma$ -secretase inhibitor and then treated with F3 or Jagged1. In both cases, no NICD staining was observed in the nuclei (Figures 3Ba and 3Bb). Moreover, two S3 cleavage mutants, V1744K-myc and V1744L-myc, which showed reduced proteolysis and parallel reduction in activity (Schroeter et al., 1998), were transfected into OLN cells that were then treated with F3 or Jagged1. Cells showed *c-myc* immunostaining mainly in the cytoplasm and on the cell surface, but not in the nuclei (Figures 3Bc–3Bf). In immunoprecipitation assays, *c-myc* antibody precipitates from F3- or Jagged1-treated V1744K-myc and V1744L-myc transfected OLN cells could only be labeled with NICD antibody that also recognizes full-length Notch1 (300 kDa) (Figure 3Bg, upper panel), indicating that these mutant Notch1 molecules remained intact. Only the precipitates from F3- or Jagged1-treated mNotch1-myc transfected OLN cells showed a reactive band upon probing with V1744 antibody that solely recognizes NICD released from S3 (120 kDa) (Figure 3Bg, lower panel). Altogether, these observations suggest that F3 induces RIP at the Notch1 S3 site.

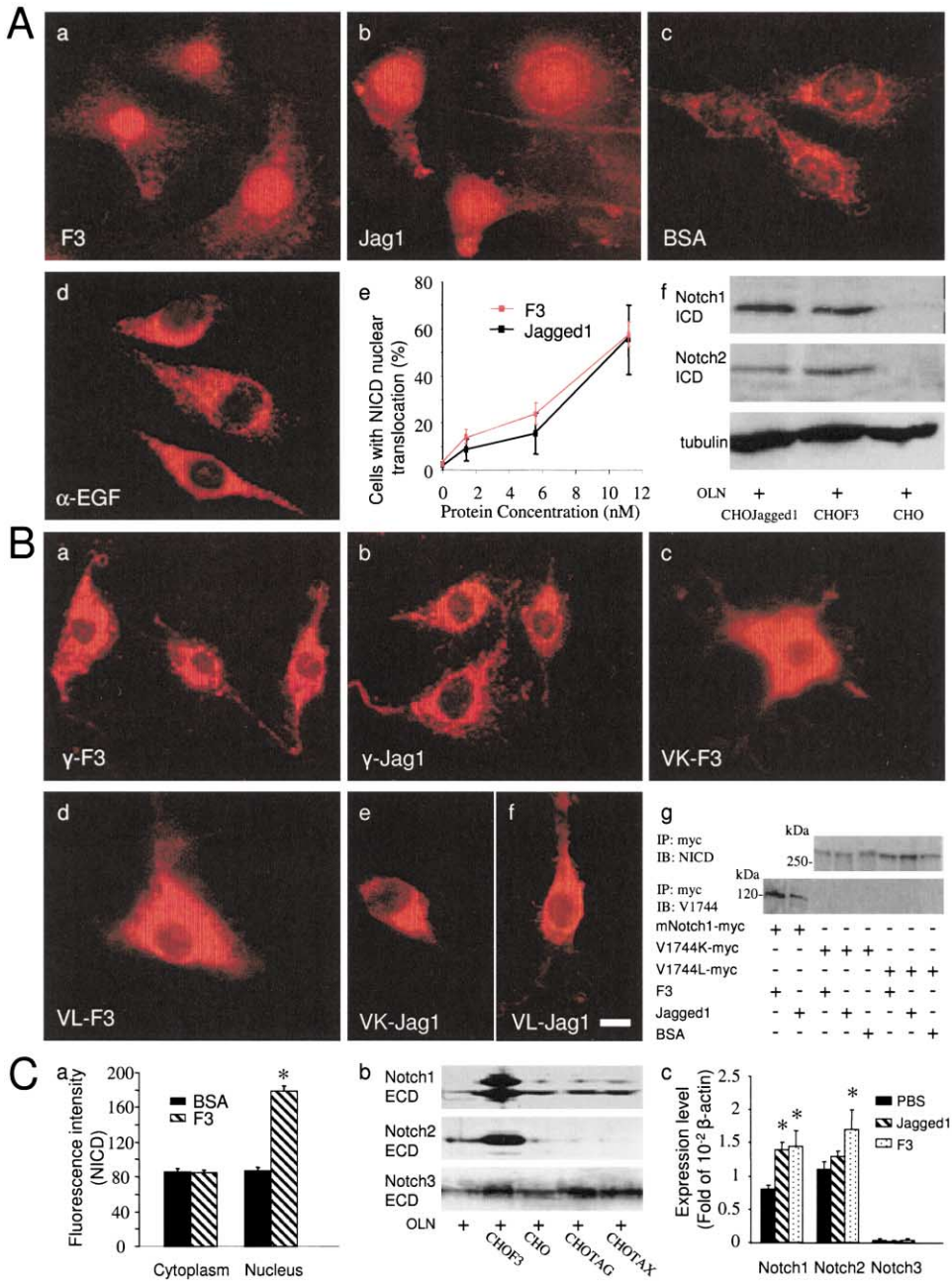


Figure 3. NICD Translocation

(A) F3-induced NICD nuclear translocation. mNotch1-myc transfected OLN cells were treated with 11.2 nM F3 (a), Jagged1 (b), BSA (c), or preincubated with  $\alpha$ -Notch1 EGF prior to F3 treatment (d) and then stained with  $\alpha$ -NICD. (e) Quantification of cells with nuclear staining of NICD after treatment with increasing concentrations of F3 and Jagged1. Data are mean  $\pm$  SEM. (f) OLN cells were cultured with Jagged1-, F3-, or mock-transfected CHO cells, and lysates were immunoprobed with  $\alpha$ -Notch1,  $\alpha$ -Notch2, and  $\alpha$ -tubulin.

(B) F3-induced RIP involves  $\gamma$ -secretase at the S3 site. OLN cells were pretreated with 200  $\mu$ M  $\gamma$ -secretase inhibitor, stimulated with F3 (a) or Jagged1 (b), and stained with  $\alpha$ -NICD. After treatment with F3 (c and d) or Jagged1 (e and f), myc-tagged V1744K or V1744L mutant-transfected OLN cells were immunolabeled for *c-myc*. (g)  $\alpha$ -*c-myc* immunoprecipitates from OLN cells expressing myc-tagged wild-type Notch1 or V1744K and V1744L mutants were immunoblotted with  $\alpha$ -NICD (which recognizes both the  $\sim$ 300 kDa full-length and the  $\sim$ 120 kDa intracellular portion of Notch1) or  $\alpha$ -V1744 (which only recognizes NICD after cleavage at the S3 site). Scale bar in (Bf): 15  $\mu$ m for (Aa)-(Ad) and (Ba)-(Bf).

(C) Upregulation of Notch1 and Notch2. Total (cytoplasmic plus nuclear) NICD staining intensity was quantified in F3-treated and BSA-treated mNotch1-myc transfected OLN cells (a). OLN cells cultured alone or with F3-, mock-, TAG-1-, or TAX-transfected CHO cells were lysed and probed with  $\alpha$ -Notch1,  $\alpha$ -Notch2, and  $\alpha$ -Notch3 (b). (c) Real-time PCR assays of Notch mRNA levels in OLN cells treated with 11.2 nM F3, Jagged1, or PBS. Raw data were normalized to  $\beta$ -actin. Bars are mean  $\pm$  SEM. \*,  $p < 0.05$  compared with PBS.

### **F3/Notch Interaction Upregulates Notch1 and Notch2 Expression**

F3, but not BSA, induced a 2-fold increase in nuclear NICD (Figure 3Ca), while there was no noticeable change in cytoplasmic NICD, suggesting that F3 upregulates Notch expression. To confirm this, OLN cells were cultured with mock-, F3-, TAG-1-, or TAX-transfected CHO cells. TAG-1 and TAX are members of F3 subfamily (Tsotra et al., 1993). Expression of Notch1 and Notch2, but not Notch3, increased when OLN cells were cultured with F3-transfected CHO cells (Figure 3Cb). Real-time PCR showed that soluble F3 increased Notch1 and Notch2, but not Notch3 transcripts (Figure 3Cc), while Jagged1 only upregulated Notch1, but not Notch2. Thus, F3/Notch interaction may provide a feedback loop to specifically upregulate Notch1 and Notch2.

### **Oligodendroglial Processes Alter their Morphology upon Contact with F3**

To model the scenario of axoglial contact during myelination, we studied the morphology of OLN processes when they contact cell surface-expressed F3. Since OLN cells extend longer processes than primary OLs, they are ideally suited for observing subtle morphological changes that occur during contact. F3-transfected CHO cells mimicked the paranodal axonal component. Mock-, TAG-1-, and TAX-transfected CHO cells were used as controls. Remarkably, most OLN processes terminated upon contact with F3-transfected CHO cells and flattened to form a cytoplasmic sheet spreading over the surface of CHO cells, as if in an attempt to envelop the cell (Figures 4A–4K). But this was not observed with mock- (Figures 4L and 4M), TAG-1- (Figures 4N and 4O), or TAX-transfected (Figures 4P and 4Q) CHO cells. While approximately 80% of extending processes halted upon reaching F3-transfected CHO cells, with other CHO cells the proportion was only 20% (Figure 4R). These results suggest that a signal inducing the morphological change is presented to the oligodendroglial processes when F3 is encountered.

### **F3, but Not Jagged1, Upregulates MAG**

To explore how the morphological change described above could relate to F3/Notch signaling, we investigated the expression of myelin-associated glycoprotein (MAG), a mature OL marker, in the aforementioned cocultures. Parental and transfected CHO cells did not express Delta, Jagged1, and Jagged2 (Figure 5Aa). Membrane extracts of cocultured cells were immunoblotted for MAG. The constitutive level of MAG in OLN cells was very low, if not undetectable. However, when OLN cells were cultured with F3-transfected CHO cells, MAG was upregulated (Figure 5Ab). F3-transfected CHO cells do not express MAG (not shown). In real-time PCR, primary OLs plated upon F3 substrate showed approximately sixteen-fold increase in MAG transcripts versus cells seeded on BSA (Figure 5Ac). OLN cells showed a similar efficiency of MAG upregulation (not shown).

Furthermore, mNotch1-myc transfected OLN cells were immunolabeled for MAG and 2', 3'-cyclic nucleotide 3'-phosphodiesterase (CNPase), an OL-specific antigen. Treatment with soluble F3 resulted in a remarkable increase in MAG staining (Figure 5Ba) and enhanced

CNPase staining (Figure 5Bd), compared with Jagged1 (Figures 5Bb, 5Bc, 5Be, and 5Bf) or BSA (not shown) treatment. Quantification of MAG and CNPase fluorescence intensities revealed an approximately 300% increase in MAG and 40% increase in CNPase labeling in F3- versus Jagged1- or BSA-treated cells (Figure 5Bg). Cell pretreatment with Notch1 EGF antibody prevented F3-induced increase in MAG and CNPase (Figure 5Bg), suggesting that Notch is required for this event. In addition, F3 induced cells to flatten and form a sheet-like structure (Figure 5Ba). Quantification of the substratum area covered by cells revealed a 2-fold increase in that covered by F3-versus Jagged1- or BSA-treated cells (Figure 5Bh). These findings confirm F3-induced MAG upregulation.

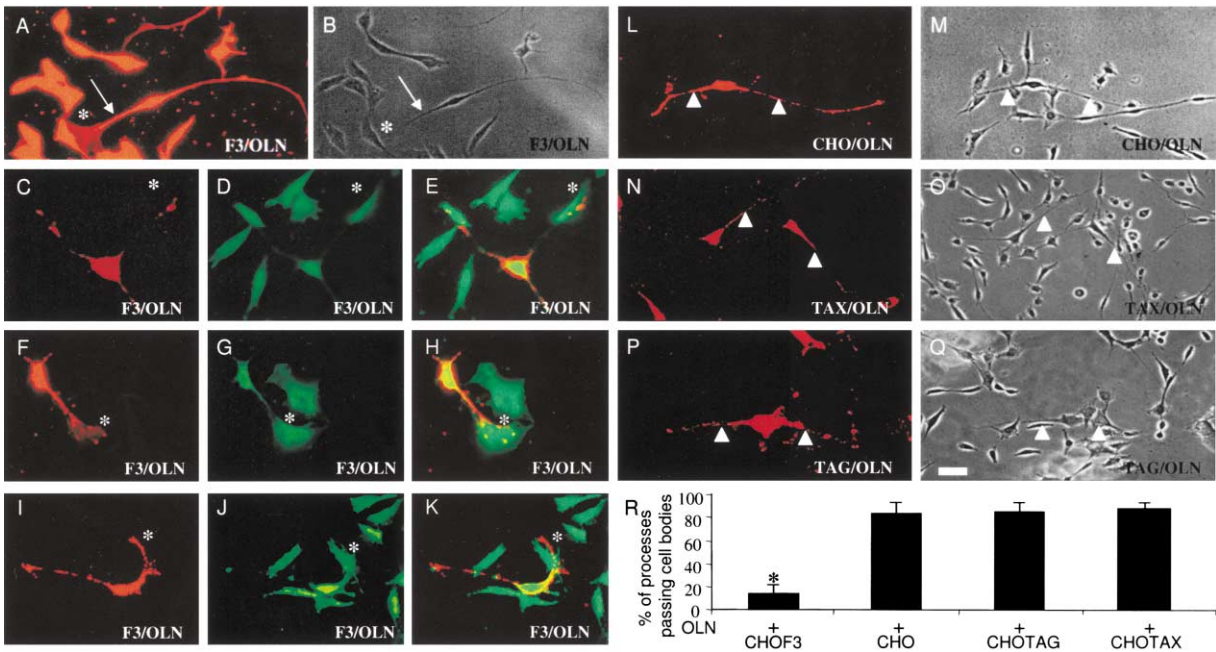
### **MAG Is Upregulated by F3/Notch Interaction**

To better understand the involvement of NICD in this event, we transiently transfected into OLN cells V5-tagged dominant-negative Notch1 (dn-N1) or Notch2 (dn-N2) (Small et al., 2001), which lack the intracellular regions but can bind to extracellular ligands. Cells were then treated with F3 and double stained with V5 and MAG antibodies. Notably, both dn-N1-V5- (Figure 5Ca) and dn-N2-V5- (Figure 5Cb) positive cells were poorly labeled for MAG. pcDNA4/V5/LacZ (LacZ) was used as a vector control (Figure 5Cc). Moreover, OLN cells transfected with myc-tagged V1744K (Figure 5Cd) and V1744L (Figure 5Ce) were treated with F3 and double stained for *c-myc* and MAG. In either case, F3 failed to upregulate MAG in *c-myc*-positive cells. Quantification of MAG fluorescence intensity confirmed that Notch1 or Notch2 dysfunction, in other words, the absence of NICD, abolished F3-induced MAG upregulation (Figure 5Cj), suggesting that NICD is required for MAG expression.

We further investigated the inductive role of F3 in this event by introducing into OLN cells V5-tagged constitutive-active Notch1 (caN1) (Figures 5Cf and 5Cg) and Notch2 (caN2) (Figures 5Ch and 5Ci), which lack the extracellular domains and are ligand-independently active (Small et al., 2001). That is, even in the absence of F3, NICD is generated and translocates to the nucleus. In OLN cells, caN1 (Figure 6Ac) and caN2 (not shown) transactivated *Hes1* in luciferase reporter assays. Immunolabeling showed that V5-positive cells were faintly stained for MAG (Figure 5Cj). Given that Jagged1 also induces NICD release, but does not increase MAG expression, these results demonstrate that MAG upregulation requires F3-induced NICD.

### **F3/Notch-Induced MAG Upregulation Is Independent of *Hes1***

A prominent feature of Notch signaling is the expression of *Hes* genes in an oscillatory manner (Hirata et al., 2002). We thus quantified *Hes1* mRNA levels in OLN cells using real-time PCR. Nonphysiological treatment of cells with 2 mM EDTA (Rand et al., 2000) triggered a sharp increase in *Hes1* mRNA during the first two hours and a return to basal level by three hours (Figure 6Aa), reflecting the exquisite regulation of endogenous *Hes1* expression (Dale and Maroto, 2003). However, F3, Jagged1, or BSA treatment did not significantly alter the baseline oscillating levels of endogenous *Hes1* tran-



**Figure 4. OLN Cellular Processes Halt and Alter their Morphology upon Contact with F3-Transfected CHO Cells**  
Cellular processes (arrows in [A] and [B]) of OLN cells extend toward F3-transfected CHO cell somata and upon contact with them, terminate and elaborate a flattened cytoplasmic sheet that envelops the cell body. This phenomenon is indicated by asterisks (\*). (A) Both OLN and F3-transfected CHO cells were prestained with PKH26 red fluorescent dye. (B) The bright-field micrograph corresponding to (A). (C, F and I) OLN cells were prestained with PKH26 red fluorescent dye. (D, G, and J) Both OLN cells and F3-transfected CHO cells were stained for *c-myc* (green). (E, H, and K) Merged images of (C) and (D), (F) and (G), and (I) and (J), respectively. (L–Q) In the control systems, cellular processes (arrowheads) of OLN cells extend past transfected CHO cell bodies. (L) and (M), (N) and (O), and (P) and (Q) are corresponding PKH26 red fluorescent and bright-field micrographs of cocultures of OLN cells with mock- (L and M), TAX- (N and O) and TAG-1- (P and Q) transfected CHO cells. (R) Quantification of OLN cellular processes extending past transfected CHO cell bodies in the cocultures. Data are mean  $\pm$  SD. \*,  $p < 0.01$  compared with controls. Scale bar in (Q): 25  $\mu$ m for (A), (B), and (L–Q) and 15  $\mu$ m for (C)–(K).

scription at short (the first three hours) or long (12 and 24 hr) times after treatment (Figure 6Aa).

To investigate whether F3-induced MAG upregulation relates to constitutive level of *Hes1* protein, *Hes1* antisense oligonucleotides (Kabos et al., 2002) were used to block basal *Hes1* protein expression in OLN cells (Figure 6Ab). MAG upregulation was not influenced by this treatment or control sense oligonucleotides (Figures 6Ad, 6Ae, and 6Ag).

Furthermore, we transfected OLN cells with dominant-negative RBP-J-myc (dn-RBP-J-myc), bearing a mutation of lysine 218 to histidine, which abolishes effective high affinity binding to *Hes1* promoter region (Kato et al., 1997). *Hes1* luciferase reporter assay showed that the mutant prevented *Hes1* activation by caN1 (Figure 6Ac). After transfection, cells were treated with F3 and double labeled for *c-myc* and MAG. *c-myc* positive cells showed the same level of MAG as neighboring nontransfected cells (Figures 6Af and 6Ag). These results indicate that MAG upregulation triggered by F3/Notch signaling is independent of endogenous *Hes1* expression.

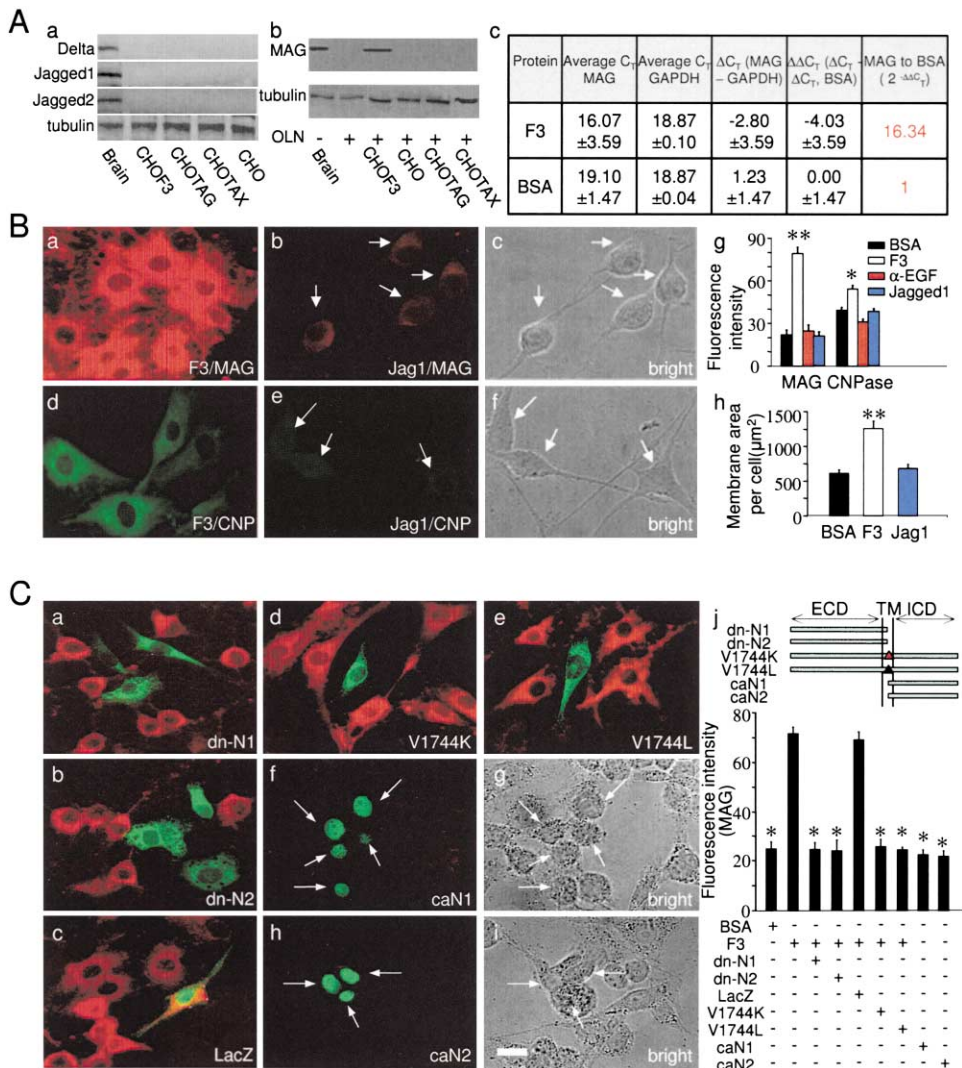
#### F3/Notch-Induced MAG Upregulation Involves DTX1

Given that F3-induced MAG upregulation does not involve *Hes1*, we investigated the role of another Notch

downstream element, DTX1, in this event using myc-tagged wild-type DTX1 (Yamamoto et al., 2001) and its two deletion mutants, HA-tagged DTX1 mutant (DTX1-D1), containing amino acids 1–411 (Yamamoto et al., 2001), and Flag-tagged DTX1 mutant (DTX1-D2), containing amino acids 1–242 (Izon et al., 2002) (Figure 6Ba). The two mutants lack the Ring-H2 finger motif, which contributes to DTX1 oligomerization, an essential step for DTX1 functioning (Matsuno et al., 2002). As previously observed (Yamamoto et al., 2001), *Hes1* luciferase reporter assay showed that overexpressed DTX1 inhibited the transactivation of *Hes1* by caN1 (Figure 6Bb), while both DTX1-D1 and DTX1-D2 restored *Hes1* response to caN1 (Figure 6Bb). After transfection, OLN cells were treated with F3 and double labeled for MAG and corresponding tags. Overexpression of DTX1 had no effect on F3-induced MAG upregulation (Figures 6Bc–6Be and 6Bi). Interestingly, MAG upregulation was abolished in the HA-positive or Flag-positive cells (Figures 6Bf–6Bi). These observations strongly suggest that F3/Notch-induced MAG upregulation involves DTX1.

#### F3/Notch Signaling Pathway via DTX1 Promotes OPC Differentiation into OLs

The Jagged1/Notch signaling pathway inhibits OPC differentiation into OLs (Wang et al., 1998). To explore



**Figure 5. MAG Is Upregulated by F3/Notch Interaction**

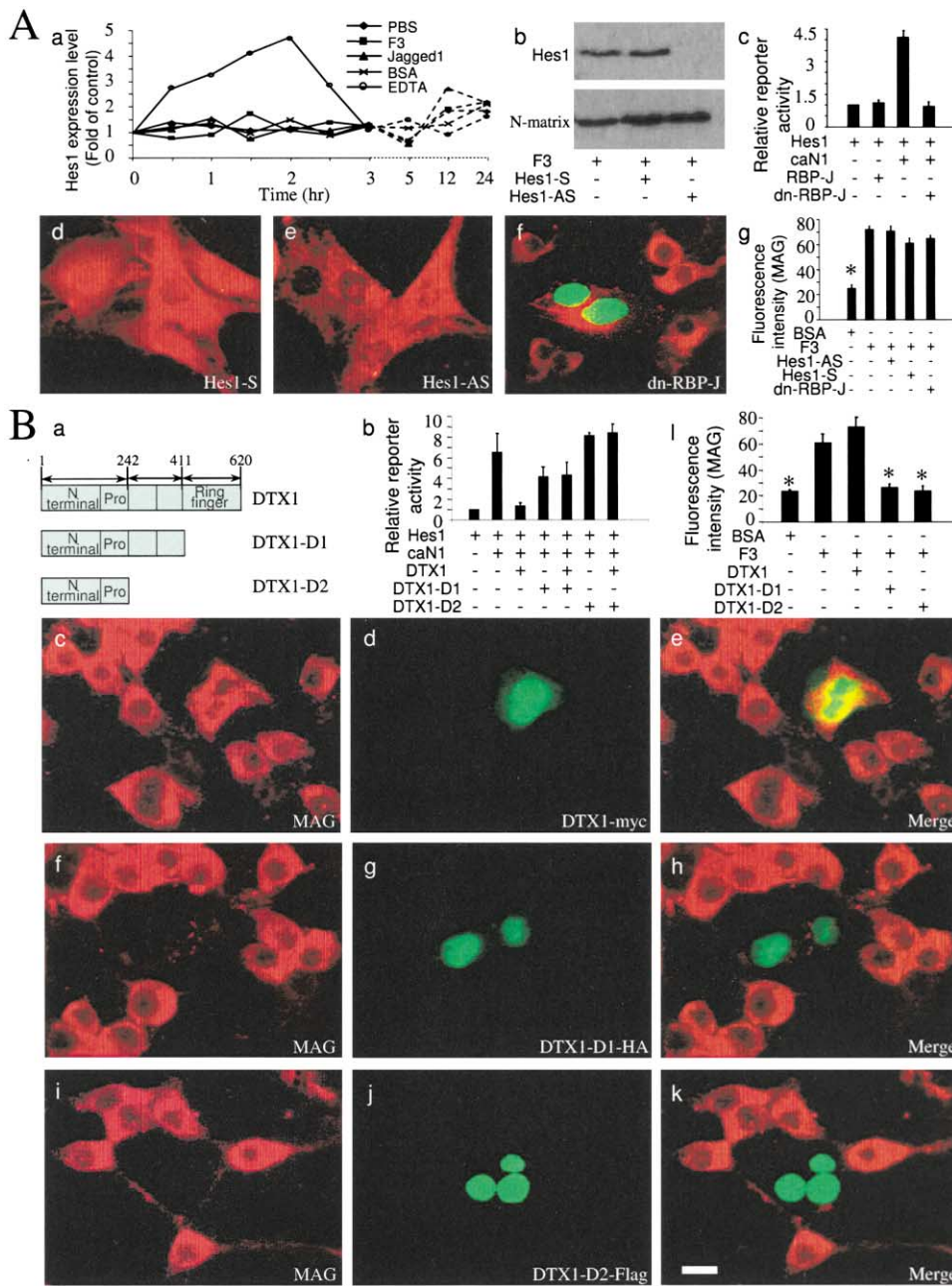
(A) MAG is upregulated by F3. CHO cells and transfected derivatives do not express classic ligands of Notch, Delta, Jagged1, and Jagged2 (a). Lysates of rat brain, OLN alone and the indicated cocultured cells were probed with  $\alpha$ -MAG (upper panel) or  $\alpha$ - $\gamma$ -tubulin (bottom panel) (b). (c) Measured by real-time PCR, MAG mRNA in primary OLN is elevated significantly by F3 versus BSA treatment. The raw data were normalized to GAPDH using comparative  $C_T$  method.

(B) F3, but not Jagged1, upregulates MAG. mNotch1-myc transfected OLN cells were treated with 11.2 nM F3-Fc (a and d) or Jagged1 (b, c, e, and f) and labeled using  $\alpha$ -MAG (a and b) or  $\alpha$ -CNPase (d and e). The arrows in (b) and (e) indicate the cell bodies, which can be better viewed in bright-field pictures (c and f). (g) Fluorescence intensities of MAG and CNPase staining in cells treated with F3, Jagged1, or BSA, or pretreated with  $\alpha$ -Notch1 EGF followed by F3. Data are mean  $\pm$  SEM. (h) Quantification of the surface area (mean  $\pm$  SEM) occupied by cells treated with F3, Jagged1, or BSA. \*,  $p < 0.05$ ; \*\*,  $p < 0.01$  compared with BSA.

(C) MAG upregulation is F3/Notch interaction-dependent. OLN cells transfected with Notch ICD-deleted mutants dn-N1 (a) and dn-N2 (b); LacZ (c); S3 cleavage mutants V1744K (d) and V1744L (e); or Notch ECD-deleted mutants caN1 (f and g) and caN2 (h and i). The cells were then treated (a–e) or untreated (f–i) with 11.2 nM F3 and double labeled for MAG (red) and V5 (a–c, f, and h) (green) or c-myc (d and e) (green). The transfected cells in (f) and (h) can be better viewed as indicated by arrows in bright-field pictures (g) and (i), respectively. (j) MAG fluorescence intensities in cells transfected with various indicated constructs followed by different protein treatments. Data are mean  $\pm$  SEM. ECD, extracellular domain; TM, transmembrane domain; ICD, intracellular domain. The S3 site mutations in V1744K and V1744L constructs are indicated by triangles in the transmembrane region. \*,  $p < 0.01$  compared with F3-treated OLN cells. Scale bar in (C): 20  $\mu$ m for (Ba)–(Bf); 40  $\mu$ m for (Ca)–(Ci).

whether F3/Notch signaling via DTX1 instructs OPC differentiation, purified OPCs positive for the progenitor marker Ng2 (Dawson et al., 2000) (Figure 7Aa) were treated with BSA, F3, or Jagged1 for 2 days and then double stained for Ng2 and CNPase (Figures 7Ab–7Ad). After F3 treatment, over 70% of OPCs differentiated into CNPase+

OLN compared to ~50% after BSA stimulation, while Jagged1 treatment resulted in nearly all OPCs remaining undifferentiated (Figure 7Ak). F3-stimulated cells were more bifurcated and inclined to form a web-like structure (Figure 7Ac) than BSA-treated cells (Figure 7Ab). Notch and DTX1 involvement was examined by transfecting



**Figure 6. MAG Expression Is Independent of *Hes1* and Dependent on DTX1**

(A) MAG upregulation is independent of *Hes1* expression. (a) OLN cells were treated with the indicated ligands or compounds. At the times shown, *Hes1* transcripts were quantified using real-time PCR and normalized to that at the start of the time course. (b, d, and e) OLN cells were untreated or pretreated with *Hes1* sense (Hes1-S) or antisense (Hes1-AS) oligonucleotides followed by 11.2 nM F3. Cell lysates were probed with  $\alpha$ -Hes1 (upper panel) or  $\alpha$ -nuclear matrix protein (N-matrix) (bottom panel) (b) or cells were labeled for MAG (d and e). Also, OLN cells transfected with pGVB/*Hes1* reporter alone or together with constructs expressing caN1, RBP-J, or myc-tagged dn-RBP-J were subjected to luciferase assay (c). Data are mean  $\pm$  SD. (f) OLN cells transfected with dn-RBP-J-myc were treated with 11.2 nM F3 and double stained for MAG (red) and c-myc (green). (g) MAG staining intensity in OLN cells with various treatments indicated above. Data are mean  $\pm$  SEM. \*,  $p < 0.01$  compared with cells treated with F3 alone.

(B) MAG upregulation involves DTX1. (a) DTX1 constructs used in luciferase reporter assays and immunostaining study. N-terminal, N-terminal domain; Pro, proline-rich motif; Ring finger, Ring-H2 finger motif. OLN cells were transfected with pGVB/*Hes1* reporter alone or together with indicated expression constructs. (b) Luciferase reporter activity in these cells. Data are mean  $\pm$  SD. DTX1- (c–e), DTX1-D1-HA- (f–h), or DTX1-D2-Flag- (i–k) transfected OLN cells were treated with 11.2 nM F3 and double labeled for MAG (red) and related tags (green). (l) MAG fluorescence intensity in OLN cells transfected with indicated constructs followed by different protein treatments. Data are mean  $\pm$  SEM. \*,  $p < 0.01$  compared with F3-treated OLN cells. Scale bar in (Bk): 30  $\mu$ m for (Ac)–(Af) and (Bc)–(Bk).



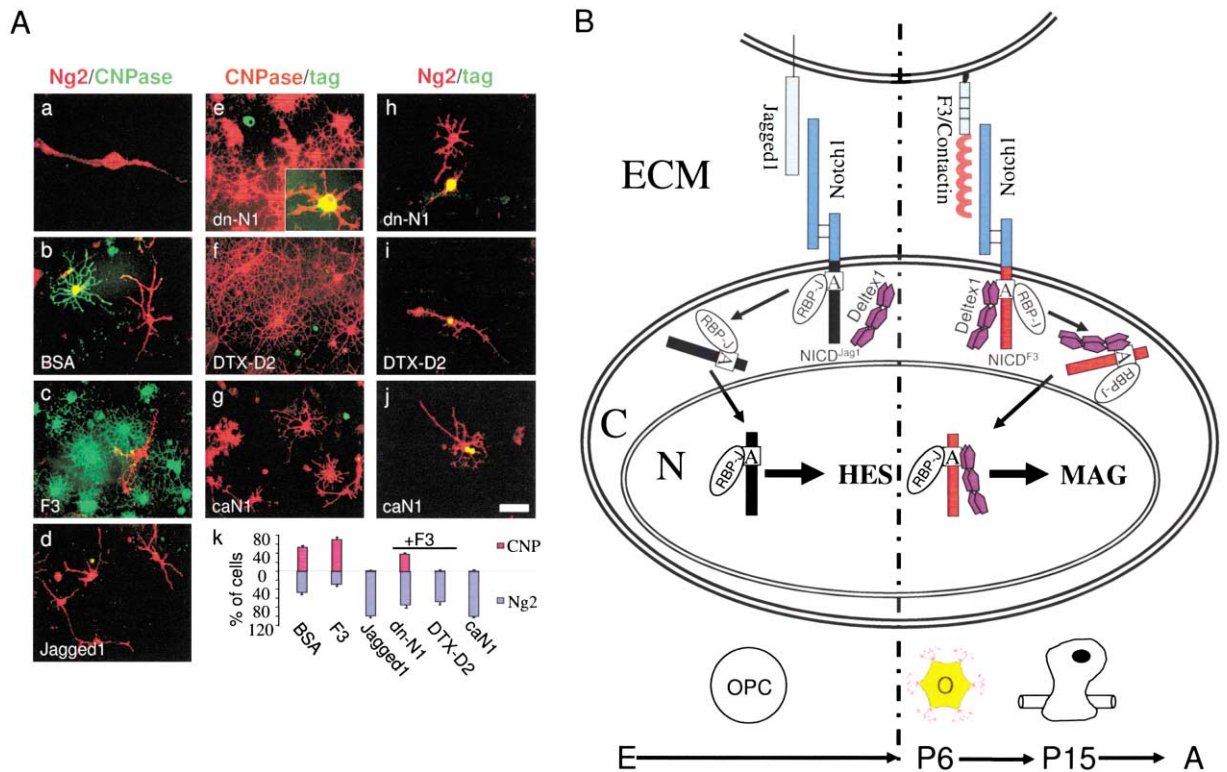


Figure 7. F3/Notch Interaction Induces OPC Differentiation

(A) F3/Notch signaling via DTX1 promotes OPC differentiation. Purified Ng2<sup>+</sup>/CNPase<sup>-</sup>OPCs (a) were treated with BSA (b), F3 (c), or Jagged1 (d) for 2 days, double labeled for Ng2 (red) and CNPase (green), and counted (k). Some OPCs were transfected with tagged dn-N1 (e and h) and DTX1-D2 (f and i) followed by F3 treatment. Other OPCs were transfected with caN1 and left untreated (g and j). Cells were double stained for the appropriate tag (green) and CNPase (red; e–g) or Ng2 (red; h–j) and counted (k). Scale bar in (j): 25  $\mu$ m for (a) and (e, inset), 100  $\mu$ m for (b)–(j).

(B) Proposed model of ligand-dependent Notch signaling pathways during development. F3 interacts with the Notch receptor on the opposing cell surface to stimulate Notch/RBP-J signaling pathway to recruit DTX1 before or after releasing NICD into the cytoplasm. The NICD/RBP-J/DTX1 complex may undergo specific but unidentified modification prior to translocation into the nucleus, where it activates target genes such as MAG. This signaling may contribute to OL maturation after P6, when decreased Jagged1 expression favors the initiation of F3/Notch signaling. In contrast, before P6, Jagged1/Notch signaling activates the NICD/RBP-J-dependent transcription of target genes such as *Hes1* and predominantly inhibits OPC differentiation. ECM, extracellular matrix; C, cytoplasm; N, nucleus; NICD<sup>Jag1</sup> and NICD<sup>F3</sup>, NICD released upon Jagged1 and F3 activation, respectively; E, embryo; P6 and P15, postnatal day 6 and 15, respectively; A, adult; O, oligodendrocyte; right bottom cartoon: myelinating oligodendrocyte ensheathing the axon.

OPCs with dn-N1-V5 (Figures 7Ae and 7Ah) and DTX1-D2-Flag (Figures 7Af and 7Ai), respectively, followed by F3 treatment for 2 days. Other OPCs were transfected with caN1-V5 and left untreated (Figures 7Ag and 7Aj). Notably, immunolabeling for tags and CNPase (Figures 7Ae–7Ag) or Ng2 (Figures 7Ah–7Aj) showed that most dn-N1 (~75%) or DTX1-D2 (~67%) transfected OPCs remained Ng2<sup>+</sup> (Figure 7Ak), despite the presence of F3. In particular, ~40% of dn-N1-transfected cells were CNPase<sup>+</sup>, but these cells were less bifurcated (Figure 7Ae, inset), compared to surrounding nontransfected cells, indicating a relatively immature stage. However, CNPase<sup>+</sup> DTX1-D2-transfected cells were hardly detectable. Consistent with a previous report (Wang et al., 1998), caN1-transfected cells remained Ng2<sup>+</sup>, and almost none became CNPase<sup>+</sup> OLs (Figure 7Ak), indicating that F3-induced NICD is specifically required for accelerated OPC differentiation. These results demonstrate that F3/Notch signaling via DTX1 promotes OPC development.

## Discussion

Our data designate the adhesion molecule F3 as a functional ligand of Notch. F3/Notch interaction induces the generation and nuclear translocation of NICD and elevates Notch1 and Notch2 expression. It promotes OPC differentiation and upregulates MAG in OLN cells and primary OLs, revealing a potential regulatory role for F3 in OL development. Thus, ligand-specific Notch signaling via Jagged1 as an inhibitory factor and F3 as a positive instructor may coordinate myelination (Figure 7B).

### Notch Is an Oligodendroglial Surface Receptor of F3

Adhesive contacts at axoglial junctions are partly contributed by the F3-Caspr-neurofascin 155 heterotrimer (Girault and Peles, 2002). Herein we define a functional ligand-receptor interaction between F3 and Notch. Cell adhesion/repulsion assays and biochemical approaches demonstrate that Notch and F3 are binding partners.

Further, we have identified two extracellular sites on Notch1 for F3 binding, namely N1.1 and N1.3. The former contains the EGF repeats 11–12 involved in DSL binding (Rebay et al., 1991). F3 is also expressed on OLs (Koch et al., 1997) and transduces signals to glial intracellular Fyn, which then interacts with Tau protein to mediate myelination (Klein et al., 2002). Since soluble F3 is sufficient to trigger F3/Notch signaling and the lipid raft assay demonstrated that Notch1 is not localized to the F3-enriched fraction, F3 may not interact with Notch1 in *cis*. Given that Notch and F3 colocalize in various regions of the brain (Lardelli et al., 1994; Revest et al., 1999), particularly at axoglial junctions, our results suggest a role for F3 as a *trans*-acting ligand of Notch.

### F3/Notch Signaling Induces Proteolytic Release of NICD and Upregulates Notch Homologs

RIP, the generation of nuclear signaling proteins derived from nonnuclear precursors such as Notch and APP, is a new paradigm of signal transduction that adds unforeseen diversity to the signaling repertoire of a cell (Ebinu and Yankner, 2002). We have shown that F3 binding triggers Notch intramembrane proteolysis at the S3 site and nuclear translocation of the resultant NICD in OLN cells. The ability of Notch1 EGF antibody or brefeldin A and monensin to block this event suggests that the extracellular F3/Notch interaction is essential for the intramembrane cleavage-derived generation and transport of NICD. Thus, it is another example of RIP. In addition, the F3/Notch signaling pathway may specifically increase Notch1 and Notch2 (but not Notch3) expression or protect Notch1 and Notch2 from rapid degradation. Either way, this may serve to replenish consumed receptors on the cell surface and thus sustain signal continuity.

### A Possible Model for F3/Notch Signaling via DTX1

Given that F3 and Jagged1 share a common binding domain on Notch1, Jagged1 downregulation that occurs prior to myelination may permit the alternate interaction of Notch with F3. In OLN cells, both Jagged1 and F3 trigger  $\gamma$ -secretase-mediated and S3-directed release of NICD followed by its nuclear translocation. Moreover, caN1 activates *Hes1*, which is blocked by coexpression of dn-RBP-J-myc or DTX1. Thus, it is conceivable that F3-induced Notch intracellular signaling is associated with RBP-J. However, only F3-induced NICD, but not Jagged1-induced NICD or caN1 or caN2, induces OPC differentiation and increases MAG expression, suggesting that this event may require specific extracellular ligand-receptor interaction. Moreover, experiments utilizing either dn-RBP-J-myc or *Hes1* antisense oligonucleotides indicate that the blockage of endogenous *Hes1* expression is not involved in F3/Notch-induced MAG upregulation. On the other hand, two truncated mutants of DTX1, which lack the Ring-H2 finger motif that is indispensable for the formation of functional homodimeric DTX1 (Matsuno et al., 2002), prevent both F3-promoted OPC differentiation and MAG upregulation. Thus, we propose that a switch in ligands may alter Notch intracellular signaling effectors (Figure 7B). The binding of different ligands may induce the formation of distinct Notch conformations. Such conformational

alterations could result from different, albeit overlapping, regions of Notch recognized by Jagged1 and F3. Notch receptors with distinct conformations may interact, before or after cleavage, with different cytoplasmic factors, such as DTX1. The form of NICD subsequently arriving at the nucleus then specifies further potential interactions and determines its transcriptional target. It will be of significance to investigate this hypothesis and identify DTX1-related transcription cofactors that are required for F3/Notch signaling.

### Potential Role of F3/Notch Signaling via DTX1 in OL Maturation

Jagged1/Notch signaling contributes to maintaining OPCs in an undifferentiated stage (Wang et al., 1998). The failure of efficient remyelination in multiple sclerosis (MS) has been partly attributed to the activation of OPC Notch by astrocyte-expressed Jagged1 (John et al., 2002). However, Jagged1 expression sharply decreases from around P6 (Wang et al., 1998), a time point concurrent with the onset of myelination and the clustering of axonal F3 at the paranode (Kazarinova-Noyes et al., 2001), an ideal position to interact with Notch receptors on the surface of newly formed OLs. Mutant animals, in which Notch1 is selectively ablated in OPCs (Genoud et al., 2002), are characterized by ectopic immature OLs, most of which undergo apoptosis, indicating that autonomous differentiation in the absence of the Notch receptor may be disruptive and that other regulatory signaling cascades besides Jagged1/Notch may be needed to ensure correct differentiation and survival of OLs. We observed here that F3 promotes OPC differentiation, which can be blocked by both dominant-negative Notch and DTX1 deletion mutants, and oligodendroglial processes emanating from OLN cells terminate and spread over the surface of F3-transfected CHO cells, an event related to the upregulation of myelin-specific proteins, such as MAG and CNPase. Upon Notch interaction with either immobilized or soluble F3, MAG is significantly upregulated at both the protein and mRNA levels. MAG upregulation can be blocked by dominant-negative construct of Notch1, Notch2, or deletion mutants of DTX1. These observations indicate that OL maturation involves F3/Notch signaling via DTX1 (Figure 7B).

In summary, our study reveals a new facet of the Notch signaling pathway. Upon activation by F3, Notch signaling via DTX1 continues to participate in OL maturation through upregulating certain myelin-related proteins instead of solely functioning to inhibit OPC differentiation into OLs. Hence, this finding may prove to be an efficient molecular handle for promoting remyelination in degenerative diseases, such as MS, by creating an environment in which Notch predominantly interacts with endogenous or exogenous F3 to initiate the F3/Notch/DTX1 signaling pathway.

### Experimental Procedures

#### Antibodies

The following antibodies were used: Monoclonal Notch1 EGF (Neo-marker), CNPase and Flag (Sigma), *c-myc* (9E10) and HA (Santa Cruz Biotechnology), nuclear matrix (Chemicon) and V5 (Invitrogen) antibodies, polyclonal V1744 (Cell Signaling), N2ICD, Jagged1, Jagged2, Delta (Santa Cruz Biotechnology),  $\gamma$ -tubulin (Sigma), Ng2

(Chemicon), Hes1 (Kaneta et al., 2000), NICD (Logeat et al., 1998), Notch1, Notch2, Notch3 (kind gifts from Dr. Lendahl), and F3 (Shimazaki et al., 1998). Polyclonal Caspr antibody was obtained by immunization of rabbits with a GST fusion protein of amino acids 277–430 of human Caspr and polyclonal MAG antibody (7610) with the following peptide: N'-CISCGAPDKYESREVST-C' (Eurogentec).

#### Cell Adhesion/Repulsion Assay

Cell adhesion/repulsion assay was performed as described (Xiao et al., 1996).

#### Fusion Proteins

##### Production of F3-Fc Fusion Proteins

Recombinant cDNA encoding mouse F3 with the GPI-anchor substituted with human IgG Fc was inserted at the Hind III-Not I sites of pDX with an amplification-promoting sequence (APS) (Hemann et al., 1994) and introduced into Ltk<sup>-/-</sup> cells. Fc fusion proteins were purified as described (Shimizu et al., 1999).

##### Production of Notch1-GST Fusion Proteins

The following regions of the mouse Notch1 extracellular domain were subcloned into pGEX-KG vector and purified as GST fusion proteins (Xiao et al., 1996): nucleotides 79–1557 (EGF repeats 1–13), nucleotides 1324–2808 (EGF repeats 11–24), nucleotides 2575–4008 (EGF repeats 22–34), and nucleotides 3751–5247 (EGF repeats 32–36, LNR repeats). Protein concentrations were determined by BCA protein assay kit (BioRad).

#### Coimmunoprecipitation and GST Pulldown Assays

Rat brain membrane samples were prepared as described (Xiao et al., 1996) and incubated overnight at 4°C with antibody-coupled Protein A agarose beads (Roche) or glutathione-agarose beads (Sigma) bound to GST-N1.1, N1.2, N1.3, or N1.4. Captured proteins were eluted from beads with SDS-PAGE sample buffer and subjected to Western blot and detection using ECL reagent (Amersham).

#### Lipid Raft Assay

Lipid raft assay was performed as described (Krämer et al., 1999).

#### Transfection of Cells

Cells were transfected using Lipofectamine (Invitrogen) as instructed.

#### Immunocytochemistry

Cells were cultured on 13 mm coverslips (Nalge Nunc International). After various treatments, including  $\gamma$ -secretase inhibitor (Sigma), cells were fixed with 4% paraformaldehyde and blocked with 1% BSA. Cells were then incubated with primary antibodies in 0.2% BSA for 1 hr, followed by Cy3-labeled or Cy2-labeled secondary antibody (Sigma). After mounting in fluorescent mounting medium (DAKO), cells were visualized with a Leica DM RXA2 fluorescent microscope. The photos were taken using the same optical parameters to ensure the comparable luminosity. At least ten different viewing fields from three independent experiments were used to calculate the percentage of cells showing NICD translocation or differentiation. Two hundred cells from at least three independent experiments were quantified for fluorescence intensities by Adobe Photoshop (Jack et al., 2001) and measured for cytoplasmic area by Leica QFluoro software. The raw data were analyzed by Student's *t* test with  $p < 0.05$  and  $p < 0.01$  being considered a significant or highly significant difference, respectively.

#### Cell Coculture

Parental or transfected CHO cells were cultured with OLN in a 2:1 ratio for 2 days. To study OLN cell processes, cells were prestained with the PKH26 red fluorescent cell linker kit (Sigma). Then OLN and CHO cells were stained for *c-myc*. Over 100 OLN cells in three randomly selected areas from three independent experiments were counted and the raw data were analyzed by Newman-Keuls test with  $p < 0.05$  and  $p < 0.01$  being considered a significant or highly significant difference, respectively.

#### Culture of Primary OLs and OPCs

Primary OLs were isolated from P5–7 rat brain cerebrum (Colello and Sato-Bigbee, 1998), and OPCs from P5–7 rat optic nerve (Bögler, 1997).

#### Real-Time PCR Analysis

Total RNA from OLs or OLN cells was extracted using the QIAGEN RNeasy kit and treated with RNase-free DNaseI (Invitrogen). Samples were used for reverse transcription with random hexamer primers using SuperScript First-Strand Synthesis System (Invitrogen) (Notch homologs, *Hes1*) or TaqMan RT Kit (Applied Biosystems) (MAG).  $\beta$ -actin and GAPDH were used as internal controls. Real-time PCR was performed using the SYBR Green PCR Master Mix (Notch homologs, *Hes1*) or TaqMan system (MAG) on an ABI PRISM 7700 Sequence Detection System. The primers and TaqMan probes were designed using Primer Express Software (ABI), and sequences are available upon request. The raw data from at least four independent experiments were used to determine the relative expression levels of each transcript by employing the comparative  $C_T$  method (ABI user's manual).

#### *Hes1* Luciferase Reporter Assay

OLN cells ( $1.5 \times 10^5$ /well) in 12-well dishes were used for *Hes1* luciferase reporter assays. Cells were transiently transfected using Lipofectamine and Lipofectamine Plus reagents (Invitrogen). Each well received pGVB/*Hes1* luciferase reporter plasmid together with various expression plasmids. The  $\beta$ -galactosidase expression plasmid pCMV/ $\beta$ -Gal was included as internal control. Cells were lysed 24 hr posttransfection and assayed using the Steady-Glo Luciferase Assay Kit (Promega). The raw data from at least four independent experiments were used to determine the relative reporter activity.

#### Acknowledgments

We particularly thank Dr. Jeffrey Nye for providing mouse Notch1 cDNA, and Dr. Genevieve Rougon for the F3-transfected CHO cell line and F3 antibody, and for extensive discussion on the project and critical review of the manuscript. We also thank Dr. Domna Karageorgos for providing TAG-1- and TAX-transfected CHO cell lines, Dr. Melanie Richter for CHL1-Fc, Dr. Urban Lendahl for Notch1, and Notch3 antibodies, Dr. Tetsuo Sudo (Toray, Japan) for *Hes1* polyclonal antibody, Dr. Ryoichiro Kageyama for pGVB/*Hes1* luciferase reporter construct, and Dr. Craig Heilman for wild-type RBP-J construct. We are particularly indebted to Alain Israel for long-term support and critique on our work and providing murine Notch1-transfected HeLa cells and NICD antibody. We sincerely thank Dr. Malcolm Paterson for insightful comments and revision of the manuscript. We are grateful to Dr. Yun-Jin Jiang for his valuable suggestion. This work was supported by grants from: (1) the National Medical Research Council of Singapore, Singapore Health Services Pte Ltd., and Department of Clinical Research, Singapore General Hospital to Z.C. Xiao; (2) Canadian Institutes of Health Research to C.J. Pallen; (3) the Hertie Foundation and the European Community to M. Schachner; and (4) NIH grants HL 35627, HL 32348, and RR 15555 to T. Maciag.

Received: December 26, 2002

Revised: September 24, 2003

Accepted: September 25, 2003

Published: October 16, 2003

#### References

- Berglund, E.O., Murai, K.K., Fredette, B., Sekerkova, G., Marturano, B., Weber, L., Mugnaini, E., and Ranscht, B. (1999). Ataxia and abnormal cerebellar microorganization in mice with ablated contactin gene expression. *Neuron* 24, 739–750.
- Bögler, O. (1997). Isolation and purification of primary oligodendrocyte precursors. In *Current Protocols in Neuroscience*, J.N. Crawley, C. Gerfen, R. McKay, M. Rogawski, D.R. Sibley, and P. Skolnick, eds. (New York: John Wiley and Sons, Inc.), 3.4.1–3.4.9.
- Colello, R.J., and Sato-Bigbee, C. (1998). Purification of oligodendrocytes and their progenitors using immunomagnetic separation

- and percoll gradient centrifugation. In *Current Protocols in Neuroscience*, J.N. Crawley, C. Gerfen, R. McKay, M. Rogawski, D.R. Sibley, and P. Skolnick, eds. (New York: John Wiley and Sons, Inc.), 3.12.7–3.12.10.
- Dale, J.K., and Maroto, M. (2003). A HES1-based oscillator in cultured cells and its potential implications for the segmentation clock. *Bioessays* 25, 200–203.
- Dawson, M.R., Levine, J.M., and Reynolds, R. (2000). NG2-expressing cells in the central nervous system: are they oligodendroglial progenitors? *J. Neurosci. Res.* 61, 471–479.
- Ebinu, J.O., and Yankner, B.A. (2002). A RIP tide in neuronal signal transduction. *Neuron* 34, 499–502.
- Faivre-Sarrailh, C., Gauthier, F., Denisenko-Nehrbass, N., Le Bivic, A., Rougon, G., and Girault, J.A. (2000). The glycosylphosphatidyl inositol-anchored adhesion molecule F3/contactin is required for surface transport of paranodin/contactin-associated protein (caspr). *J. Cell Biol.* 149, 491–502.
- Gennarini, G., Durbec, P., Boned, A., Rougon, G., and Goriadis, C. (1991). Transfected F3/F11 neuronal cell surface protein mediates intercellular adhesion and promotes neurite outgrowth. *Neuron* 6, 595–606.
- Genoud, S., Lappe-Siefke, C., Goebbels, S., Radtke, F., Aguet, M., Scherer, S.S., Suter, U., Nave, K.A., and Mantei, N. (2002). Notch1 control of oligodendrocyte differentiation in the spinal cord. *J. Cell Biol.* 158, 709–718.
- Girault, J.A., and Peles, E. (2002). Development of nodes of Ranvier. *Curr. Opin. Neurobiol.* 12, 476–485.
- Hemann, C., Gartner, E., Weidle, U.H., and Grummt, F. (1994). High-copy expression vector based on amplification-promoting sequences. *DNA Cell Biol.* 13, 437–445.
- Hirata, H., Yoshiura, S., Ohtsuka, T., Bessho, Y., Harada, T., Yoshikawa, K., and Kageyama, R. (2002). Oscillatory expression of the bHLH factor Hes1 regulated by a negative feedback loop. *Science* 298, 840–843.
- Holm, J., Hillenbrand, R., Steuber, V., Bartsch, U., Moos, M., Lubbert, H., Montag, D., and Schachner, M. (1996). Structural features of a close homologue of L1 (CHL1) in the mouse: a new member of the L1 family of neural recognition molecules. *Eur. J. Neurosci.* 8, 1613–1629.
- Huppert, S.S., Le, A., Schroeter, E.H., Mumm, J.S., Saxena, M.T., Milner, L.A., and Kopan, R. (2000). Embryonic lethality in mice homozygous for a processing-deficient allele of Notch1. *Nature* 405, 966–970.
- Izon, D.J., Aster, J.C., He, Y., Weng, A., Karnell, F.G., Patriub, V., Xu, L., Bakkour, S., Rodriguez, C., Allman, D., and Pear, W.S. (2002). Deltex1 redirects lymphoid progenitors to the B cell lineage by antagonizing Notch1. *Immunity* 16, 231–243.
- Jack, C., Berezovska, O., Wolfe, M.S., and Hyman, B.T. (2001). Effect of PS1 deficiency and an APP gamma-secretase inhibitor on Notch1 signaling in primary mammalian neurons. *Brain Res. Mol. Brain Res.* 87, 166–174.
- John, G.R., Shankar, S.L., Shafit-Zagardo, B., Massimi, A., Lee, S.C., Raine, C.S., and Brosnan, C.F. (2002). Multiple sclerosis: Re-expression of a developmental pathway that restricts oligodendrocyte maturation. *Nat. Med.* 8, 1115–1121.
- Kabos, P., Kabosova, A., and Neuman, T. (2002). Blocking HES1 expression initiates GABAergic differentiation and induces the expression of p21 (CIP1/WAF1) in human neural stem cells. *J. Biol. Chem.* 277, 8763–8766.
- Kaneta, M., Osawa, M., Sudo, K., Nakauchi, H., Farr, A.G., and Takahama, Y. (2000). A role for pref-1 and HES-1 in thymocyte development. *J. Immunol.* 164, 256–264.
- Kato, H., Taniguchi, Y., Kurooka, H., Minoguchi, S., Sakai, T., Nomura-Okazaki, S., Tamura, K., and Honjo, T. (1997). Involvement of RBP-J in biological functions of mouse Notch1 and its derivatives. *Development* 124, 4133–4141.
- Kazarinova-Noyes, K., Malhotra, J.D., McEwen, D.P., Mattei, L.N., Berglund, E.O., Ranscht, B., Levinson, S.R., Schachner, M., Shrager, P., Isom, L.L., and Xiao, Z.C. (2001). Contactin associates with Na<sup>+</sup> channels and increase their functional expression. *J. Neurosci.* 21, 7517–7525.
- Kishi, N., Tang, Z., Maeda, Y., Hirai, A., Mo, R., Ito, M., Suzuki, S., Nakao, K., Kinoshita, T., Kadesch, T., et al. (2001). Murine homologs of deltex define a novel gene family involved in vertebrate Notch signaling and neurogenesis. *Int. J. Dev. Neurosci.* 19, 21–35.
- Klein, C., Kramer, E.M., Cardine, A.M., Schraven, B., Brandt, R., and Trotter, J. (2002). Process outgrowth of oligodendrocytes is promoted by interaction of fyn kinase with the cytoskeletal protein tau. *J. Neurosci.* 22, 698–707.
- Koch, T., Brugger, T., Bach, A., Gennarini, G., and Trotter, J. (1997). Expression of the immunoglobulin superfamily cell adhesion molecule F3 by oligodendrocyte-lineage cells. *Glia* 19, 199–212.
- Krämer, E.M., Klein, C., Koch, T., Boytinch, M., and Trotter, J. (1999). Compartmentation of Fyn kinase with glycosylphosphatidylinositol-anchored molecules in oligodendrocytes facilitates kinase activation during myelination. *J. Biol. Chem.* 274, 29042–29049.
- Lardelli, M., Dahlstrand, J., and Lendahl, U. (1994). The novel Notch homologue mouse Notch3 lacks specific epidermal growth factor-repeats and is expressed in proliferating neuroepithelium. *Mech. Dev.* 46, 123–136.
- Logeat, F., Bessia, C., Brou, C., LeBail, O., Jarriault, S., Seidah, N.G., and Israel, A. (1998). The Notch1 receptor is cleaved constitutively by a furin-like convertase. *Proc. Natl. Acad. Sci. USA* 95, 8108–8112.
- Martinez Arias, A., Zecchini, V., and Brennan, K. (2002). CSL-independent Notch signaling: a checkpoint in cell fate decisions during development? *Curr. Opin. Genet. Dev.* 12, 524–533.
- Matsuno, K., Ito, M., Hori, K., Miyashita, F., Suzuki, S., Kishi, N., Artavanis-Tsakonas, S., and Okano, H. (2002). Involvement of a proline-rich motif and RING-H2 finger of Deltex in the regulation of Notch signaling. *Development* 129, 1049–1059.
- Rand, M.D., Grimm, L.M., Artavanis-Tsakonas, S., Patriub, V., Blacklow, S.C., Sklar, J., and Aster, J.C. (2000). Calcium depletion dissociates and activates heterodimeric Notch receptors. *Mol. Cell Biol.* 20, 1825–1835.
- Rebay, I., Fleming, R.J., Fehon, R.G., Cherbas, L., Cherbas, P., and Artavanis-Tsakonas, S. (1991). Specific EGF repeats of Notch mediate interactions with Delta and Serrate: implications for Notch as a multifunctional receptor. *Cell* 67, 687–699.
- Revest, J.M., Faivre-Sarrailh, C., Schachner, M., and Rougon, G. (1999). Bidirectional signaling between neurons and glial cells via the F3 neuronal adhesion molecule. *Adv. Exp. Med. Biol.* 468, 309–318.
- Richter-Landsberg, C., and Heinrich, M. (1996). OLN-93: a new permanent oligodendroglia cell line derived from primary rat brain glial cultures. *J. Neurosci. Res.* 45, 161–173.
- Sakurai, T., Lustig, M., Nativ, M., Hemperly, J.J., Schlessinger, J., Peles, E., and Grumet, M. (1997). Induction of neurite outgrowth through contactin and Nr-CAM by extracellular regions of glial receptor tyrosine phosphatase beta. *J. Cell Biol.* 136, 907–918.
- Schroeter, E.H., Kisslinger, J.A., and Kopan, R. (1998). Notch-1 signaling requires ligand-induced proteolytic release of intracellular domain. *Nature* 393, 382–386.
- Shimazaki, K., Hosoya, H., Takeda, Y., Kobayashi, S., and Watanabe, K. (1998). Age-related decline of F3/contactin in rat hippocampus. *Neurosci. Lett.* 245, 117–120.
- Shimizu, K., Chiba, S., Kumano, K., Hosoya, N., Takahashi, T., Kanda, Y., Hamada, Y., Yazaki, Y., and Hirai, H. (1999). Mouse jagged1 physically interacts with notch2 and other notch receptors. Assessment by quantitative methods. *J. Biol. Chem.* 274, 32961–32969.
- Small, D., Kovalenko, D., Kacer, D., Liaw, L., Landriscina, M., Di Serio, C., Prudovsky, I., and Maciag, T. (2001). Soluble Jagged 1 represses the function of its transmembrane form to induce the formation of the Src-dependent chord-like phenotype. *J. Biol. Chem.* 276, 32022–32030.
- Tsiotra, P.C., Karagogeos, D., Theodorakis, K., Michaelidis, T.M., Modi, W.S., Furley, A.J., Jessell, T.M., and Papatheakis, J. (1993). Isolation of the cDNA and chromosomal localization of the gene

(TAX1) encoding the human axonal glycoprotein TAG-1. *Genomics* 18, 562–567.

Umemori, H., Sato, S., Yagi, T., Aizawa, S., and Yamamoto, T. (1994). Initial events of myelination involve Fyn tyrosine kinase signaling. *Nature* 367, 572–576.

Wang, S., Sdrulla, A.D., diSibio, G., Bush, G., Nofziger, D., Hicks, C., Weinmaster, G., and Barres, B.A. (1998). Notch receptor activation inhibits oligodendrocyte differentiation. *Neuron* 21, 63–75.

Xiao, Z.C., Taylor, J., Montag, D., Rougon, G., and Schachner, M. (1996). Distinct effects of recombinant tenascin-R domains in neuronal cell functions and identification of the domain interacting with the neuronal recognition molecule F3/11. *Eur. J. Neurosci.* 8, 766–782.

Yamamoto, N., Yamamoto, S., Inagaki, F., Kawaichi, M., Fukamizu, A., Kishi, N., Matsuno, K., Nakamura, K., Weinmaster, G., Okano, H., and Nakafuku, M. (2001). Role of Deltex-1 as a transcriptional regulator downstream of the Notch receptor. *J. Biol. Chem.* 276, 45031–45040.

Zeng, L., D'Alessandri, L., Kalousek, M.B., Vaughan, L., and Pallen, C.J. (1999). Protein tyrosine phosphatase alpha (PTPalpha) and contactin form a novel neuronal receptor complex linked to the intracellular tyrosine kinase fyn. *J. Cell Biol.* 147, 707–714.