



ELSEVIER



CrossMark

Available online at [www.sciencedirect.com](http://www.sciencedirect.com)**ScienceDirect**

Energy Procedia 63 (2014) 7685 – 7693

Energy

**Procedia**

GHGT-12

## Uncertainty quantification for CO<sub>2</sub> sequestration and enhanced oil recovery

Zhenxue Dai<sup>a\*</sup>, Hari Viswanathan<sup>a</sup>, Julianna Fessenden-Rahn<sup>a</sup>, Richard Middleton<sup>a</sup>,  
Feng Pan<sup>b</sup>, Wei Jia<sup>b</sup>, Si-Yong Lee<sup>c</sup>, Brian McPherson<sup>b</sup>,  
William Ampomah<sup>d</sup> and Reid Grigg<sup>d</sup>

<sup>a</sup>Earth and Environmental Sciences Division, Los Alamos National Laboratory, Los Alamos, NM 87545, USA

<sup>b</sup>Energy and Geoscience Institute, The University of Utah, Salt Lake City, UT 84108, USA

<sup>c</sup>Schlumberger Carbon Services, Cambridge, MA 02139, USA

<sup>d</sup>Petroleum Recovery Research Center, New Mexico Tech, Socorro, NM 87801

---

### Abstract

This study develops a statistical method to perform uncertainty quantification for understanding CO<sub>2</sub> storage potential within an enhanced oil recovery (EOR) environment at the Farnsworth Unit of the Anadarko Basin in northern Texas. A set of geostatistical-based Monte Carlo simulations of CO<sub>2</sub>-oil-water flow and reactive transport in the Morrow formation are conducted for global sensitivity and statistical analysis of the major uncertainty metrics: net CO<sub>2</sub> injection, cumulative oil production, cumulative gas (CH<sub>4</sub>) production, and net water injection. A global sensitivity and response surface analysis indicates that reservoir permeability, porosity, and thickness are the major intrinsic reservoir parameters that control net CO<sub>2</sub> injection/storage and oil/gas recovery rates. The well spacing and the initial water saturation also have large impact on the oil/gas recovery rates. Further, this study has revealed key insights into the potential behavior and the operational parameters of CO<sub>2</sub> sequestration at CO<sub>2</sub>-EOR sites, including the impact of reservoir characterization uncertainty; understanding this uncertainty is critical in terms of economic decision making and the cost-effectiveness of CO<sub>2</sub> storage through EOR.

© 2014 The Authors. Published by Elsevier Ltd. This is an open access article under the CC BY-NC-ND license (<http://creativecommons.org/licenses/by-nc-nd/3.0/>).

Peer-review under responsibility of the Organizing Committee of GHGT-12

*Keywords:* Uncertainty quantification; CO<sub>2</sub> sequestration; enhanced oil recovery; permeability; injectivity; oil/gas production; WAG; global sensitivity; response surface.

---

\* Corresponding author. Tel.: +01-505-665-6387; fax: +01-505-665-8737.

E-mail address: [daiz@lanl.gov](mailto:daiz@lanl.gov)

## 1. Introduction

Carbon sequestration with enhanced oil recovery (CO<sub>2</sub>-EOR) is a promising technology for emissions management because of its low cost in the absence of emissions policies that include incentives for carbon capture and storage [1]. And, the demand for CO<sub>2</sub> will only increase as more domestic oil is produced using CO<sub>2</sub>-EOR. Currently, CO<sub>2</sub>-EOR provides only about 5% percent of the total U.S. crude oil production [2]. With advancement of sequestration technology, infrastructure, and regulations, more anthropogenic CO<sub>2</sub> sources will be available for CO<sub>2</sub>-EOR in the next few decades. Most ongoing CO<sub>2</sub>-EOR uses water-alternating-gas (WAG) to control CO<sub>2</sub> mobility and CO<sub>2</sub> flood conformance (flood front uniformity) and to tackle clogging and scale issues associated with oil reservoirs [3]. While WAG can be very effective, a few operational and technical difficulties for commercial CO<sub>2</sub>-EOR still remain: (1) highly-heterogeneous reservoirs are difficult to characterize and it is even more difficult to quantify the impact of reservoir heterogeneity on CO<sub>2</sub> injectivity and oil/gas production; (2) guidelines for determining well spacing are not robust or general; and (3) time ratios of WAG injection are difficult to evaluate quantitatively [4-16].

These issues have served as a motivation for this study. The goal of this study is to develop a statistical method to quantify uncertainty in CO<sub>2</sub> sequestration and enhanced oil recovery for depleted oil reservoirs. This method consists of a multi-phase reservoir simulator coupled with geologic and statistical models to characterize reservoir heterogeneity and to sample associated uncertain parameters. A set of Monte Carlo simulations of CO<sub>2</sub>-oil-water flow and reactive transport is conducted for the Morrow reservoir in the Farnsworth Unit of the Anadarko Basin in northern Texas, followed by a global sensitivity, response surface, and general statistical analysis. For quantitative evaluation of the operational and technical uncertainty of the CO<sub>2</sub>-EOR systems, we defined a set of uncertainty metrics to post-process the Monte Carlo simulation results for statistical analysis. The metrics include: net CO<sub>2</sub> injection, cumulative oil production, cumulative CH<sub>4</sub> production, and net water injection. The two-dimensional and three-dimensional response surfaces are developed based on the known parameter ranges and distributions in the Morrow reservoir. The developed response surfaces also facilitate a statistical analysis for estimating the mean, and confidence intervals of the uncertainty metrics.

## 2. Characterization of reservoir heterogeneity and geostatistical modeling

The Farnsworth Unit is located in the Anadarko Basin of northern Texas. Southwest Partnership and Chaparral selected the major oil/gas reservoir, the Morrow formation, as its primary test reservoir to evaluate long-term storage of CO<sub>2</sub> [17]. Previous studies in nearby oil fields provide prior information about the distributions of regional Morrow reservoir parameters, such as the depth, thickness, permeability, and porosity. The regional Morrow reservoir mainly consists of incised valley-fill sandstones of the Lower Pennsylvanian that extend into eastern Colorado and western Kansas [18-21]. The regional reservoir in the Anadarko Basin has produced more than 100 million barrels of oil and 14.2 billion m<sup>3</sup> of gas. Figure 1 shows the positive correlation between the measured permeability and porosity in the regional Morrow formation (modified from Bowen [22]). The blue dots represent permeability and porosity data collected from medium to coarse grained sandstone; the pink dots represent the data from fine grained sandstones with mud drapes; the yellow triangle symbols are data from cemented sandstone; the cross symbols are data from fine-grained cross-bedded sandstone; and the star symbols are data from transgressive lag. The data points within the green circle represent permeability and porosity distributions at the Farnsworth site.

Table 1: Statistics of the measured Morrow reservoir parameters (54 sampled points)

Statistics	Sample Depth (m)	Grain Density (g/cm <sup>3</sup> )	Porosity (%)	Permeability (mD)	Permeability (logm <sup>2</sup> )	Water Saturation (%)	Oil Saturation (%)
Minimum	2337.24	2.63	5.49	0.20	-15.71	10.68	8.69
Maximum	2348.73	2.92	22.69	783.50	-12.11	58.03	30.69
Mean	2343.02	2.67	16.78	69.21	-13.70	21.94	21.31
Standard Deviation	3.47	0.05	3.72	130.93	0.79	8.31	4.50

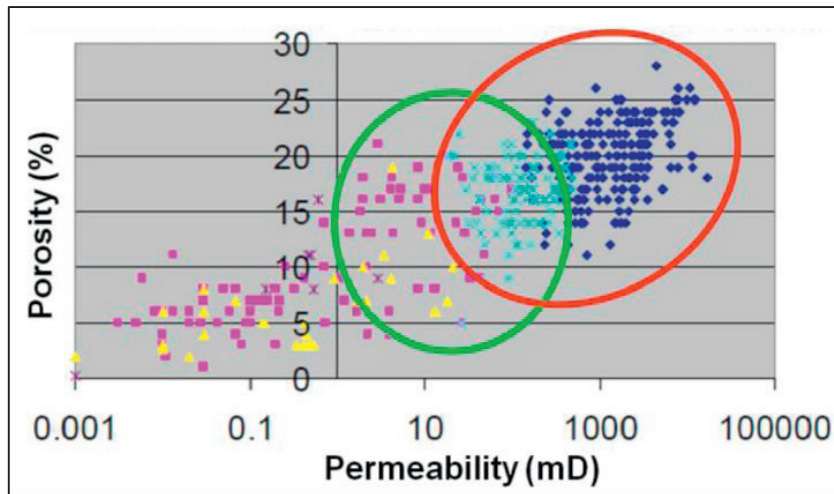


Figure 1: The positive correlation between the measured permeability and porosity in the Morrow formation (Modified from Bowen [22])

The Morrow formation at the Farnsworth site is located at depths around 2330 m and typical thicknesses between 5 and 50 m [18-21]. Recently, more measurements of the Morrow reservoir parameters were collected at the Farnsworth site by Southwest Partnership and Chaparral [23]. A summary of the measured parameters is listed in Table 1. The permeability in this site is estimated between 0.2 and 783.5 milli-Darcy (mD) and the porosity is between 0.05 and 0.23. The computed Pearson's correlation coefficient between porosity and log permeability is about 0.8, which means these two parameters are highly correlated. Note that the Pearson's coefficient is a measure of the strength and direction of the linear relationship between two parameters that is defined as the sample covariance of the variables divided by the product of their sample standard deviations. According to Bernabe et al. [24] and Deng et al. [25], the relationship between permeability and porosity is expressed as:

$$k = a \phi^b, \quad (1)$$

where  $k$  is permeability ( $\text{m}^2$ ),  $\phi$  is porosity,  $a$  and  $b$  are constants. By using the permeability and porosity data collected in this site, we estimated the two constants:  $a = 345.2$  and  $b = 4.1$ . The measured and computed permeability vs porosity is plotted in Figure 2.

Based on the prior parameter information in the regional Morrow reservoir and the statistics of recently-measured parameters, we summarize the ranges and distributions of the uncertain parameters for simulating the heterogeneity of the Morrow reservoir in the Farnsworth site in Table 2. Having limited existing spatial-based permeability data in this site, we assume that the horizontal and vertical integral scales are 500 m and 50 m in the reservoir, respectively. The permeability anisotropy factor (or ratio of vertical and horizontal permeability) is assumed to be 0.1. The relative permeability functions for  $\text{CO}_2$ -oil-water multiphase flow simulations were calculated on the base of Stone's approach to define the related coefficients [26-29]. Table 2 also lists the range of time ratio of WAG for alternatively injecting  $\text{CO}_2$  gas and water within each time period or cycle (such as 10 days or 20 days). This injection time ratio is calculated by dividing  $\text{CO}_2$  injection time (days) by water injection time (days) in each time period.

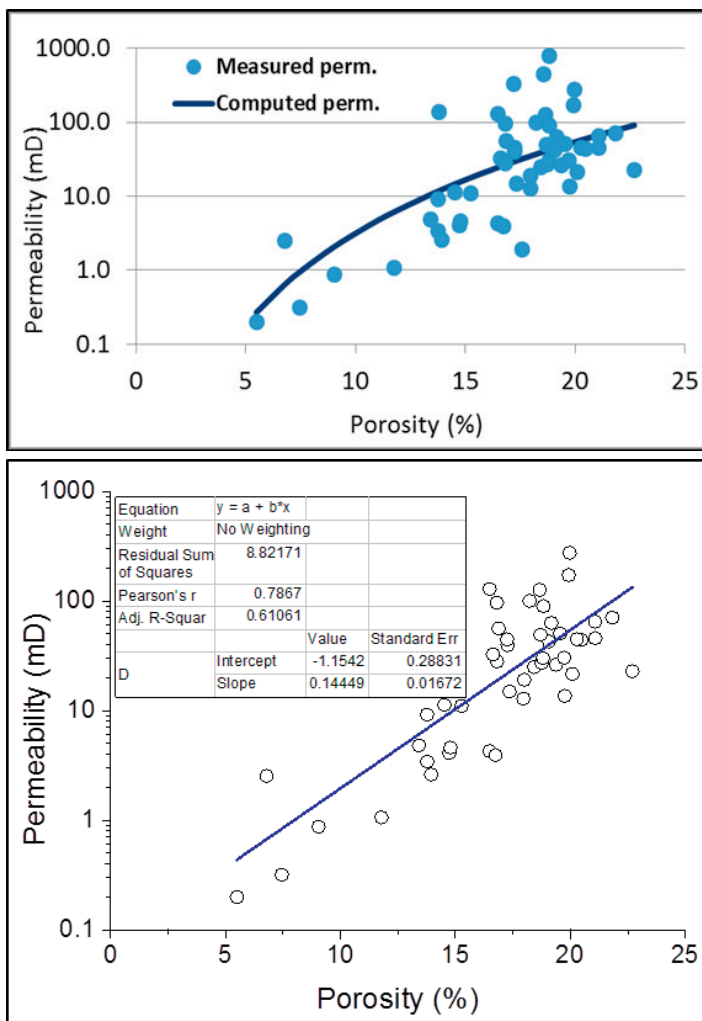


Figure 2: The positive correlation between the measured permeability and porosity in the Morrow formation

### 3. Integrated Monte Carlo simulations

A set of integrated Monte Carlo simulations of CO<sub>2</sub>-oil-water flow and transport in the reservoir is developed by coupling the uncertainty quantification tool PSUADE [30], the Los Alamos developed geostatistical modeling tool GEOST [31-33] modified from the Geostatistical Software Library [34], and the multi-phase reservoir simulator SENSOR [27]. PSUADE is used to sample 1000 realizations of the uncertain parameters with Latin Hypercube Sampling, to conduct global sensitivity analysis of the output variables in relation to the uncertain parameters, and to derive response surfaces or reduced order models (ROMs) for understanding the relationships of the input parameters and the output variables. GEOST is used to analyze the existing permeability data and to generate heterogeneous permeability distributions for the reservoir with a sequential Gauss method. The reservoir porosity is computed by the correlation equation (1) with the generated permeability data. The reservoir simulator SENSOR is used to model CO<sub>2</sub>-oil-water flow and transport in the reservoir for each generated heterogeneous model under a Monte Carlo simulation framework.

Table 2: Uncertain parameters and objective functions for the Farnsworth site

	Variables names	Min.	Max.	Mean
<b>Reservoir (Morrow) Parameters</b>	Thickness(m)	5.0	50	27.5
	Permeability(mD)	0.2	783.5	0.069
	Porosity	0.05	0.23	correlated
	Initial water saturation	0.11	0.58	0.22
	Initial oil saturation	0.09	0.31	0.21
	Well spacing (km)	0.1	0.5	/
	Time ratio of WAG	0.0	10	/
<b>Uncertainty metrics</b>	Net CO <sub>2</sub> injection(Mton)			
	Oil production(MMbbbl)			
	Gas production(m <sup>3</sup> )			
	Net water injection(Mton)			

A five-spot pattern (Figure 3) is selected for this study, where the production well is located in the center surrounded by four injection wells at the corners of the pattern with a well spacing (or injection distance). The heterogeneity in the model area is assumed to be symmetric in all four quadrants of the EOR pattern. This way, only one quarter of the five-spot pattern is required in the model with one injection well and one fourth of the production well, which implies that all of the six boundaries (top, bottom, front, back, left and right) are fixed as no-flow. The numerical model sizes and grid numbers are automatically calculated based on the sampled well spacing and reservoir thickness and a uniform mesh is used for each realization. The reservoir simulations using SENSOR start from the sampled initial water and oil saturations at a steady state and then simulate CO<sub>2</sub> injection and oil/CH<sub>4</sub> production at the Farnsworth site over 5 years for the 1000 realizations. For each realization a post-processing step is conducted to compute statistics on four uncertain metrics 1) net CO<sub>2</sub> injection which is the difference of injection and production CO<sub>2</sub> rates in 5 years (CO<sub>2</sub>inj), 2) cumulative oil production (oilprod), 3) cumulative CH<sub>4</sub> production (CH<sub>4</sub>prod), and 4) net water injection which is the difference of injection and production water rates in 5 years (H<sub>2</sub>Oinj).

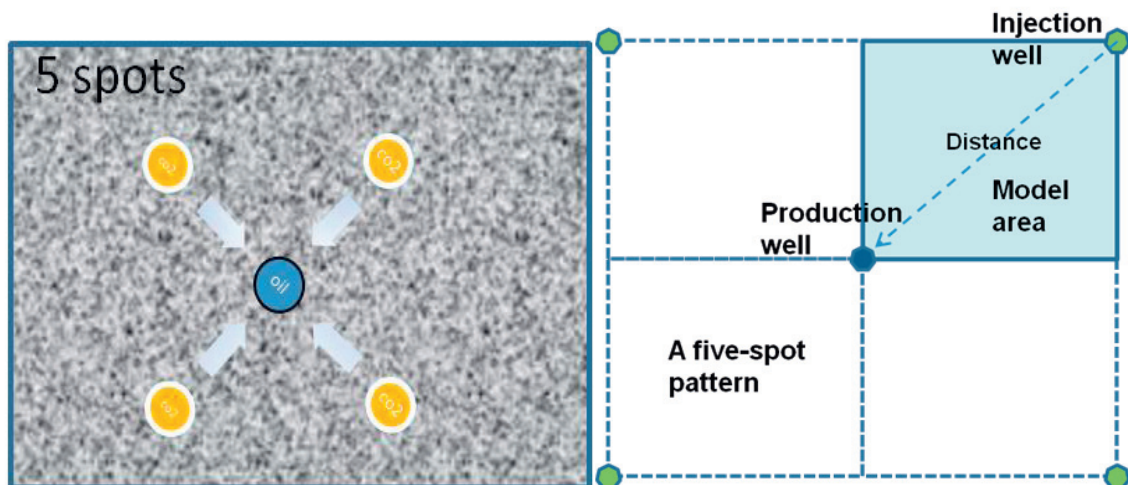


Figure 3: A five-spot CO<sub>2</sub>-EOR pattern and the model permeability distributions for optimizing the injection well distance and time ratio of WAG.

### 4. Global sensitivity analysis with MARS method

In order to determine the key flow and transport parameters driving CO<sub>2</sub>-oil/gas-water migration behavior in the reservoir, global sensitivity analysis techniques were used for investigating input-output sensitivities over the entire distributions of the uncertain parameters [35-36]. The *multivariate adaptive regression spline* (MARS) method was used to quantify the impact of uncertainty and sensitivity of the input parameters.

By using the Monte Carlo simulation results as the input for PSUADE [30], we conduct global sensitivity analysis with the MARS method for the four risk uncertainty metrics. The results plotted in Figure 4 show that different metrics are sensitive to different parameters. The net CO<sub>2</sub> injection is mainly controlled by the time ratio of WAG, reservoir permeability, thickness, and porosity (Figure 4A). The oil production is most sensitive to the reservoir porosity, well spacing, thickness, and initial water saturation (Figure 4B). The CH<sub>4</sub> (gas) production is most sensitive to the initial water saturation, well spacing, reservoir thickness, porosity, and permeability (Figure 4C). Further correlation analysis indicates that the oil and gas (CH<sub>4</sub>) production rates are negatively correlated to the initial water saturation. Finally, Figure 4D shows that the net water injection is most sensitive to the reservoir permeability, time ratio of WAG, well spacing and thickness.

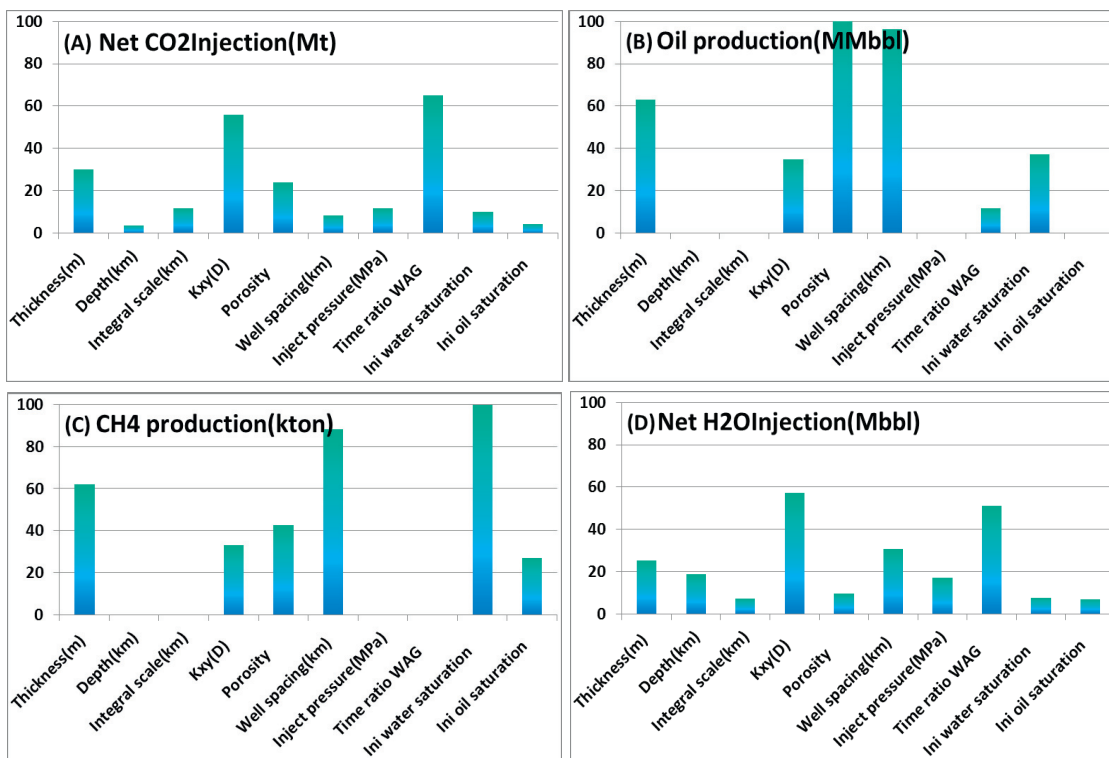


Figure 4: Global sensitivity analysis of the risk metrics to the uncertain parameters using MARS method [30]

### 5. Response surface analysis

Response surface analysis is an application of statistical and mathematical techniques useful for developing and reducing the orders of the process models. Using the post-processing results of the 1000 Monte Carlo simulations, we conducted a response surface analysis of the uncertainty metrics by using the MARS approach with bootstrap

aggregating (bagging) [30]. The fitting results of the regression to generate the response surfaces are presented in Figure 5. The corresponding  $R^2$  of these three response surfaces are larger than 0.95, respectively, which means the generated response surfaces can represent the process models very well. Figure 6 shows the two- and three-dimensional plots of the MARS response surfaces for CO<sub>2</sub> injection and oil and gas (CH<sub>4</sub>) production in relation to the most sensitive parameters. The net CO<sub>2</sub> injection rates and oil/gas production rates are positively correlated to reservoir porosity, permeability and thickness. Note that for the 1000 Monte Carlo runs the CO<sub>2</sub> injection pressures are assumed to be 70% of the hydrostatic pressures at the reservoir tops, which causes the CO<sub>2</sub> injection rates and oil/gas production rates to be positively correlated to the reservoir depths. The developed response surfaces will be utilized in the risk assessment framework, CO<sub>2</sub>-PENS [37-38], for evaluating CO<sub>2</sub>, oil, gas (CH<sub>4</sub>), and brine water interactions under the CO<sub>2</sub>-EOR environment at the Farnsworth site.

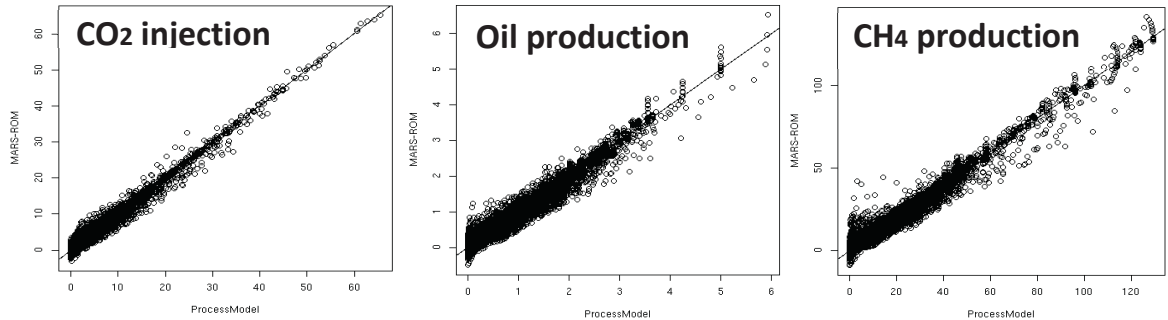


Figure 5: The fitting results of the regression to generate the response surfaces of CO<sub>2</sub> injection, oil and gas (CH<sub>4</sub>) production.

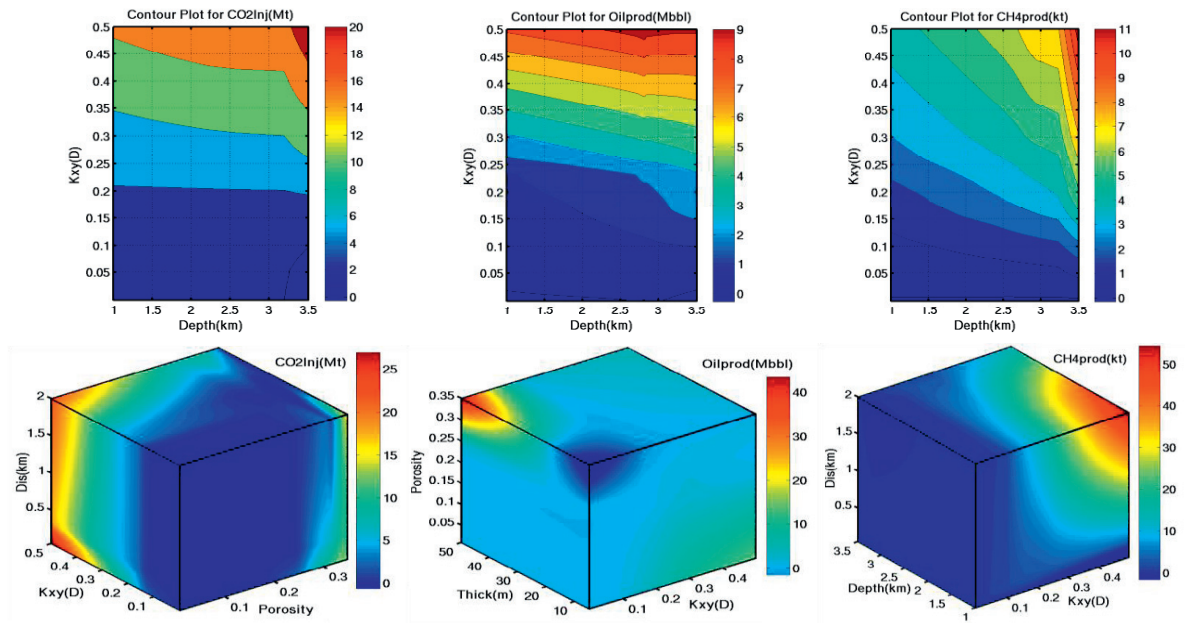


Figure 6: Two- and three-dimensional response surfaces generated with regression methods to show the relationships of the major input parameters and the risk metrics.

## 6. Summary and conclusions

This study captures the complex multi-phase flow and transport processes of CO<sub>2</sub>-oil/gas-water in the reservoir and generates the computationally efficient response surfaces. These response surfaces are in relation to the uncertain parameters in a reduced order form. The global sensitivity results indicate that the reservoir thickness, permeability, and porosity are the key parameters to control the CO<sub>2</sub>/water injection and oil/CH<sub>4</sub> production rates. The distance between the injection and production wells (well spacing) and the initial water saturation also have a large impact on the oil/CH<sub>4</sub> production.

The response surface analysis shows that net CO<sub>2</sub> injection rate increases with the increasing reservoir thickness, permeability, porosity and well spacing. The oil/CH<sub>4</sub> production rates are positively correlated to reservoir permeability, porosity and thickness, but negatively correlated to the initial water saturation.

Our next step will replace the current calculations with more complex STOMP models [39] to estimate the net CO<sub>2</sub> and water injection, oil/CH<sub>4</sub> production rates, and the optimal distance between the injection and production wells. The developed response surfaces will be utilized in the risk assessment framework, CO<sub>2</sub>-PENS [37-38], to account for CO<sub>2</sub>, oil, gas (CH<sub>4</sub>), and brine water interactions and to understand the impact of the reservoir heterogeneity uncertainty on the critical economic decision making and the cost-effectiveness of CO<sub>2</sub> storage through EOR at this site.

## Acknowledgements

This work is part of the Phase III of the SWP CO<sub>2</sub>-EOR/Storage Project that is supported by the U.S. Department of Energy and managed by the National Energy Technology Laboratory. We gratefully acknowledge the assistance of Brian Coats of Coats Engineering, Inc. for providing the multi-phase flow and transport modeling code and discussing with us the multi-phase model setup.

## References

- [1] IPCC (Intergovernmental Panel on Climate Change). IPCC special Report on Carbon Dioxide Capture and Storage. Prepared by Working Group III of the Intergovernmental Panel on Climate Change; Cambridge University Press: Cambridge, 2005, p 442.
- [2] Enick, R. M. and D. K. Olsen, Mobility and Conformance Control for Carbon Dioxide Enhanced Oil Recovery (CO<sub>2</sub>-EOR) via Thickeners, Foams, and Gels – A Detailed Literature Review of 40 Years of Research, National Energy Technology Laboratory, DOE/NETL-2012/1540, Activity 4003.200.01, 2012, 267p.
- [3] Christensen, J.R., Stenby, E.H., Skauge, A., Review of WAG Field Experience, *SPE Reservoir Evaluation and Engineering* 2001, April, pp. 97–106.
- [4] Grigg, R.B., Schechter, D.S., Improved Efficiency of Miscible CO<sub>2</sub> Floods and Enhanced Prospects for CO<sub>2</sub> Flooding Heterogeneous Reservoirs, Final report 1997, Contract No. DE-FG22-94BC14977, New Mexico Petroleum Recovery Research Center, New Mexico Institute of Mining and Technology, Socorro, New Mexico, DOE/BC/14977-13.
- [5] Bachu, S. Screening and ranking of sedimentary basins for sequestration of CO<sub>2</sub> in geological media in response to climate change, *Environ. Geol.* 2003, 44:277-289.
- [6] Asghari, K., Al-Dliwe, A., Mahinpey, N. Effect of Operational Parameters on Carbon Dioxide Storage Capacity in a Heterogeneous Oil Reservoir: A Case Study, *Ind. Eng. Chem. Res.* 2006, Vol. 45, pp. 2452–2456.
- [7] Nuñez-Lopez V, Holtz M H, Wood D J, Ambrose W A and Hovorka S D, Quick-look assessments to identify optimal CO<sub>2</sub> EOR storage sites, *Environ. Geol.* 2008, 54 1695–706.
- [8] Alvarado, V., Manrique, E. Enhanced Oil Recovery: An Update Review, *Energies* 2010, Vol. 3, pp. 1529–1575.
- [9] Viswanathan H., Z. Dai, C. Lopano, E. Keating, J. A. Hakala, K. G. Scheckel, L. Zheng, G. D. Guthrie, R. Pawar, Developing a robust geochemical and reactive transport model to evaluate possible sources of arsenic at the CO<sub>2</sub> sequestration natural analog site in Chimayo, New Mexico, *Int. J. of Greenhouse Gas Control* 2012, 10, 199–214.
- [10] Agarwal A and Parsons J., Commercial structures for integrated CCS–EOR projects *Energy Procedia* 2011, 4 5786–93.
- [11] Gao, C., X. Li, L. Guo, F. Zhao, Heavy oil production by carbon dioxide injection, *Greenhouse Gases: Sci. and Technol.* 2013, Vol. 3. Issue 3, June, p. 185-195.



- [12] Yang, C., Z. Dai, K. Romanak, S. Hovorka, R. Trevino, Inverse Modeling of Water-Rock-CO<sub>2</sub> Batch Experiments: Implications for Potential Impacts on Groundwater Resources at Carbon Sequestration Sites, *Environ. Sci. Technol.*, 2014, 48 (5), 2798–2806.
- [13] Yang, C., Romanak, K., Hovorka, S.D., Holt, R.M., Lindner, J., Trevino, R., Near-Surface Monitoring of Large-Volume CO<sub>2</sub> Injection at Cranfield: Early Field Test of SECARB Phase III. *SPE Journal* 2013, 18(3): pp. 486-494.
- [14] Dai, Z., R. Middleton, H. Viswanathan, J. Fessenden-Rahn, J. Bauman, R. Pawar, S. Lee and B. McPherson, An integrated framework for optimizing CO<sub>2</sub> sequestration and enhanced oil recovery, *Environ. Sci. Technol. Lett.*, 2014, 1, 49-54.
- [15] Dai, Z., E. Keating, D. Bacon, H. Viswanathan, P. Stauffer, A. Jordan, R. Pawar, Probabilistic evaluation of shallow groundwater resources at a hypothetical carbon sequestration site, *Scientific Reports*, 2014, 4: 4006.
- [16] Zheng, L., Apps, J.A., Spycher, N., Birkholzer, J.T., Kharaka, Y.K., Thordsen, J., Beers, S.R., Herkelrath, W.N., Kakouros, E., Trautz, R.C., Geochemical modeling of changes in shallow groundwater chemistry observed during the MSU-ZERT CO<sub>2</sub> injection experiment. *Int. J. of Greenhouse Gas Control* 2012, 7(0): 202-217.
- [17] SWP, The Southwest Partnership on Carbon Sequestration (SWP) 2013, <http://www.southwestcarbonpartnership.org/>.
- [18] Swanson, D.C., Deltaic deposits in the Pennsylvanian upper Morrow Formation of the Anadarko Basin, In Pennsylvanian sandstones of the Mid-continent: Tulsa Geological Society Publication 1 1979, p. 115-168.
- [19] Hugman, RH and FH Vidas, Oil and gas resources of the Mid-continent region: Energy and Environmental Analysis, Incorporated, Arlington, VA, 1987, p. 140.
- [20] Ball, MM, ME. Henry, and SE. Frezon, Petroleum Geology of the Anadarko Basin Region, Province (115), Kansas, Oklahoma, and Texas, Open-File Report 88-450W, U.S. Geological Survey, Denver Federal Center, Box 25046, Denver, CO 80225, 1991.
- [21] Bowen, D.W., Weimer, P., and Scott, A.J., The relative success of siliciclastic sequence stratigraphic concepts in exploration: examples from incised-valley fill and turbidite-systems reservoirs: AAPG Memoir 1993, 58, p. 15-42.
- [22] Bowen, D.W., Reservoir Geology of the Morrow Formation, Eastern Colorado and Western Kansas: Implications for CO<sub>2</sub> Sequestration and EOR, NETL Proceeding, <http://www.netl.doe.gov/publications/proceedings/05/carbon-seq/Poster%2039.pdf>, 2005.
- [23] SWP, Routine Core Analysis Test Results, Farnsworth 13-10A-811108, The Southwest Partnership on Carbon Sequestration (SWP), February, 2014.
- [24] Bernabe, Y., Mok, U., Evans, B., Permeability-porosity relationships in rock subjected to various evolution processes. *Pure and Applied Geophys.* 2003, 160, 937–960.
- [25] Deng, H., P. Stauffer, Z. Dai, Z. Jiao, R. Surdam, Simulation of industrial-scale CO<sub>2</sub> storage: Multi-scale heterogeneity and its impacts on storage capacity, injectivity and leakage, *Int. J. of Greenhouse Gas Control* 2012, 10 (2012) 397–418.
- [26] Stone, H.L., Estimation of three-phase relative permeability and residual oil data, *J. Canadian Pet. Tech.*, Oct-Dec. 1973, 53–61.
- [27] CEI, Sensor: System for Efficient Numerical Simulation of Oil Recovery, SENSOR Manual, Coats Engineering, Inc., April 1, 2011.
- [28] Pruess, K. and J. Garcia. Multiphase flow dynamics during CO<sub>2</sub> disposal into saline aquifers. *Environ. Geol.* 2002, 42(2-3):282-295. doi: 10.1007/s00254-001-0498-3.
- [29] Dai, Z., J. Samper, A. Wolfsberg, and D. Levitt, Identification of relative conductivity models for water flow and solute transport in unsaturated compacted bentonite, *Physics and Chem. of the Earth* 2008, doi:10.1016/j.pce.2008.10.012, v.33, S177-S185.
- [30] Tong, C., 2011. PSUADE User's Manual (Version 1.2.0), LLNL-SM-407882, Lawrence Livermore National Laboratory, Livermore, CA 94551-0808, May, 2011.
- [31] Dai, Z., A. Wolfsberg, Z. Lu, and R. Ritzi, Representing Aquifer Architecture in Macrodispersivity Models with an Analytical Solution of the Transition Probability Matrix, *Geophys. Res. Lett.* 2007, 34, L20406, doi:10.1029/2007GL031608.
- [32] Harp D., Z. Dai, A. Wolfsberg, J. Vrugt, B. Robinson, V. Vesselinov, Aquifer structure identification using stochastic inversion, *Geophys. Res. Lett* 2008, 35, L08404, doi:10.1029/2008GL033585.
- [33] Dai, Z., P. H. Stauffer, J. W. Carey, R. S. Middleton, Z. Lu, J. F. Jacobs, K. Hnottavange-Telleen, L. Spangle, Pre-site characterization risk analysis for commercial-scale carbon sequestration, *Environ. Sci. Technol.*, 2014, 48, 3908–3915.
- [34] Deutsch, C. V., and Journel, A. G., GSLIB: Geostatistical Software Library and user's guide: Oxford Univ. Press, New York, 1992, 340 p.
- [35] Friedman, J. H., Multivariate adaptive regression splines. *The Annals of Statistics* 1991, 19: 1. doi:10.1214/aos/1176347963.
- [36] Dai, Z., A. Wolfsberg, P. Reimus, H. Deng, E. Kwicklis, M. Ding, D. Ware and M. Ye, Identification of sorption processes and parameters for radionuclide transport in fractured rock, *J. of Hydrol.*, 2012, v 414–415, 220–230.
- [37] Stauffer, H.P., H.S. Viswanathan, R.J. Pawar, M.L. Klasky, G.D. Guthrie, CO<sub>2</sub>-PENS: A System Model for Geologic Sequestration of Carbon Dioxide. *Environ. Sci. Technol.* 2009, 43(3), 565-570.
- [38] Pawar, R., G. Bromhal, R. Dilmore, B. Foxall, E. Jones, C. Oldenburg, P. Stauffer, S. Unwin, G. Guthrie, Quantification of Risk Profiles and Impacts of Uncertainties as part of US DOE's National Risk Assessment Partnership, *Energy Procedia* 2013, 37, 4765 – 4773.
- [39] White, MD, DH Bacon, BP McGrail, DJ Watson, SK White, and ZF Zhang. STOMP Subsurface Transport Over Multiple Phases: STOMP-CO<sub>2</sub> and STOMP-CO<sub>2</sub>e Guide: Version 1.0. Pacific Northwest National Laboratory, Richland, WA, 2012.