

RESEARCH

Open Access

Oral neutrophils are an independent marker of the systemic inflammatory response after cardiac bypass

Mary Elizabeth Wilcox^{1*}, Emmanuel Charbonney², Pablo Perez d'Empaire³, Abhijit Duggal³, Ruxandra Pinto³, Ashkan Javid⁴, Claudia Dos Santos⁵, Gordon David Rubinfeld³, Susan Sutherland⁶, Wayne Conrad Liles⁷ and Michael Glogauer⁴

Abstract

Background: Cardiopulmonary bypass (CPB) is an immuno-reactive state where neutrophils are activated and accumulate in different tissues. Edema and tissue necrosis are the most common sequelae observed, predominantly in the lungs, kidneys, and heart, heralding significant risk for postoperative complications. No method exists to noninvasively assess in vivo neutrophil activity. The objective of this study was to determine if neutrophil recruitment to the oral cavity would correlate with specific biomarkers after coronary bypass surgery (CPB).

Methods: We conducted a single site prospective observational study including non-consecutive adult patients undergoing elective, on-pump CPB. Blood and either oral cavity rinses or swabs were collected pre- and post-CPB. Absolute neutrophil counts from oral samples and serum biomarkers were measured. The association between neutrophil recruitment to the oral cavity, biomarkers and outcomes after CPB were analyzed.

Results: CPB was associated with statistically significant increases in oral and blood neutrophil counts, as well as an increase in certain biomarkers over preoperative baseline. Peripheral blood neutrophil count were increased at all time points however statistically significant differences in median oral neutrophil counts were observed only at the time point immediately postoperative, and in what seems to be two unique patient populations ($p < 0.001$; group 1, median: 1.6×10^5 , Interquartile range [IQR], $1.1 \times 10^5 - 4.8 \times 10^5$, and group 2, median: 1.9×10^6 , IQR, $8.7 \times 10^5 - 4.0 \times 10^6$).

Conclusions: CPB is associated with a transient increase in oral neutrophils that may correlate with the systemic inflammatory response; oral neutrophils may have the ability to discriminate and identify unique patient populations based on their tissue migration.

Keywords: Biomarkers, Multiple organ failure, Coronary bypass, Critical illness, Neutrophil activation

Introduction

The innate immune system provides the host with an immediate but non-specific response to infection. Although inflammation is an essential response, its onset and progression may become “dysregulated”, resulting in a massive and uncontrolled release of proinflammatory mediators that may lead to widespread tissue injury [1]. The systemic inflammatory response system (SIRS) is a complex clinical syndrome involving complement activation,

cytokines, coagulation, fibrinolytic and kallikrein cascades. Neutrophils play a pivotal role in defense as they contain and destroy causative organisms after breaching host anatomical barriers, such as the skin and mucosa. Neutrophil-mediated organ dysfunction has been implicated as playing a causative role in the high rates of morbidity and mortality in SIRS patients [2].

Coronary artery bypass grafting (CABG) is a well-established treatment for ischemic heart disease. It is traditionally performed using cardiopulmonary bypass (CPB), termed “on-pump CABG”. CPB is an immuno-reactive state, where polymorphonuclear (PMN) cells are activated through contact with the synthetic surfaces of

* Correspondence: elizabeth.wilcox@mail.utoronto.ca

¹Interdepartmental Division of Critical Care, University Health Network, Toronto, Canada

Full list of author information is available at the end of the article

the bypass circuit, mechanical shear stress and hemodilution, [3-6] and as a result accumulate in different tissues. Nonrandomized studies have shown a marked difference in complement activation (C3a, C5a) between on-pump and off-pump CPB patients [7]. Similar such studies have shown a significant and persistent increase in lymphocytes and neutrophils postoperatively in on-pump CPB patients when compared to off-pump CPB patients [8]. This widespread PMN activation generates an abundance of oxygen and hydroxyl free radicals that can exacerbate the release of granular constituents such as elastase and myeloperoxidase into surrounding tissues. Edema and tissue necrosis are the most common sequelae observed predominantly in the lungs, kidneys and heart heralding significant risk for postoperative complications [9,10]. Examination of autopsy specimens from patients with multiple organ failure (MOF) revealed localization of neutrophils in both renal blood vessel aggregates and large-scale infiltration of the lung tissues [11]. In acute lung injury, the intensity of neutrophil infiltrates correlates with impaired lung function and with high concentrations of neutrophil-derived proteolytic enzymes in bronchoalveolar lavage [12].

Currently there is no rapid non-invasive method of assessing in vivo neutrophil function as a surrogate of an individual's innate immune function. The standard routine measure for assessing a patient's innate immune status involves monitoring circulating PMN levels. While this is an informative clinical parameter as it relates to cell numbers, it provides no information about cell functionality or the efficiency with which these cells reach the site of infection and eliminate microbial burden. The primary role of a neutrophil is to eliminate microbes at sites distant from the circulation. While monitoring neutrophil recruitment to tissues following CPB may be beneficial in determining those patients who are more susceptible to CPB-related morbidity, tissue biopsy is invasive and impractical.

Research suggests that the oral cavity may provide an early opportunity to non-invasively monitor the innate immune system [13-15]. The oral cavity is optimal for this as it contains an ever-present bacterial biofilm on teeth, tongue and other shedding surfaces. This bacterial presence is kept under control, in part, by the constant influx of neutrophils that migrate into the mouth from the periodontal tissues, which surround and support the teeth [16]. The recruitment of neutrophils by the oral biofilm may serve as a non-invasive measure of in vivo systemic neutrophil activation and chemotaxis [13-15].

The primary aim of this study was to show that CPB increases oral neutrophil counts, measured by oral rinses or swabs. The secondary aims were to demonstrate that CPB is associated with a change in oral neutrophil counts, independent of its effect on neutrophils in the peripheral circulation, and that changes are seen in levels of both pro- and anti-inflammatory biomarkers. Our hypothesis

was that changes in oral neutrophil counts would correlate with specific biomarkers after CPB and possibly be associated with CPB-related morbidity. CPB induced changes in oral neutrophils could also demonstrate proof of concept for exploring oral neutrophil counts as marker for neutrophil activation in other inflammatory states seen in critical care.

Methods

The Sunnybrook Health Sciences Centre Research Ethics Board approved this protocol. Written consent was provided by study participants.

Study subjects

Adult patients (>18 years of age) undergoing elective, on-pump cardiopulmonary bypass surgery were enrolled in this study at Sunnybrook Health Sciences Centre following attainment of informed consent. Exclusion criteria included: existing oral disease (e.g. oral cancer, congenital or acquired chronic mucocutaneous disease), ongoing infection (e.g. endocarditis), recent myocardial infarct (i.e. within 2 weeks), pregnancy, pre-existence of any autoimmune or immune deficiency disease and/or patients who had been treated with steroids or other immunosuppressive agents within the previous 30 days.

Sample collection and frequency

Either a brief oral rinse or swab was performed to collect neutrophils from the oral cavity. Oral rinses were not performed while a patient was intubated and mechanically ventilated due to the risk of aspiration. For the oral rinse sample, patients rinsed with 10 mLs of sterile normal saline (9%) for 30 seconds [14,17]. Samples for the oral swab, were obtained from four-quadrant gingival swabs [13]. Oral neutrophil samples were obtained from patients pre-operatively (T_0) and postoperatively upon arrival to the CVICU (T_1), at 12-18 hours (T_2), and on day 3 (T_3). All samples were stored at 4°C prior to transportation to the lab for analysis.

Assessment of oral PMN levels

The protocol used to collect and count oral PMNs was a modification of previous work [18,19]. Each oral collection sample was collected in a sterile vial and stored at 4°C to preserve the cells prior to transportation to the laboratory for processing. All samples were processed within 24 hours of collection; the oral rinse sample underwent centrifugation at 2500 RPM for 5 minutes at 21°C (Hettich Rotina 35R, Rare Scientific, Edmonton, Canada). The cell pellet was re-suspended in 1 mL of double distilled water. Twenty milligrams of 2,2'-azino-bis(3-ethylbenzo-thiazoline-6-sulfonic acid) (ABTS; AO; Sigma Chemical, Burlington, Canada) was dissolved in 3.6 mL of 1 MM phosphocitrate buffer to produce a 1X

concentrated solution. 45.6 μ L of 30% hydrogen peroxide was added to 3.952 mL of double distilled water to produce a hydrogen peroxide homogenous solution. For each 1 mL concentrated oral rinse sample, 100 μ L of the ABTS solution followed by 100 μ L of 30% hydrogen peroxide solution was added in order to observe the characteristic blue-green colour change. After the colour reaction was complete, 250 μ L of the sample was added to a 96 well plate in triplicate. The absorbance was measured at 420 nm for 10 cycles at 180 seconds per cycle using an automated microplate reader software (FLUOstar OPTIMA; BMG LABTECH GmbH, Offenburg, Germany). The final absorbance value for a sample was given as the average of the absorbance values of the cycles and of the triplicate measurements. The average standard deviation and coefficient of variation of the absorbance of the 10 cycles for all the collected samples was 0.09 and 6.34% respectively indicating a very low variation between the cycle absorbance readings. In order to determine the PMN counts within a given oral rinse sample based on the absorbance measure, a standard curve equation was used ($y = 3305783.5X - 1366$). A series of standard solutions were prepared in the lab as described above, using neutrophils of known numbers/concentrations. The absorbance was then measured at 420 nm for 10 cycles at 180 seconds per cycle using the software (FLUOstar OPTIMA; BMG LABTECH GmbH, Offenburg, Germany). The standard curve equation was then obtained by plotting the absorbance of the standard solutions versus the known concentrations, thus allowing deduction of the PMN counts using the absorbance value obtained for any one sample.

Blood neutrophil counts

Daily routine circulating white blood cell differential counts were used to compare with oral neutrophils. Values approximating most closely to the time of oral neutrophil collection were used. For patients that were still in hospital at day 7, the differential neutrophil count was used for comparative analysis.

Biomarker analysis

All subjects received concurrent blood draws. Samples were drawn in ethylenediaminetetraacetic acid and citrate tubes, centrifuged at 1700×2 g at 4°C for 20 mins, plasma was collected and frozen in cryogenic tubes at -80°C within hours of collection. Plasma was assayed for Interleukin (IL)-1 β , IL-2, IL-6, IL-10, IL-12, IL-17, IL-1RA, monocyte chemotactic protein (MCP)-1, soluble intercellular adhesion molecule (sICAM), granulocyte/macrophage colony-stimulating factor (GM-CSF) using a Luminex mediator panel with Multiplexing immunoassays instrument (Luminex technology, Austin, USA). All

assays were performed in duplicate with the average level used in the analysis.

Clinical parameters

Comprehensive clinical data was collected on the day of admission and through out the duration of the study, including: demographics, baseline characteristics (e.g. risk factors for coronary artery disease, medications, etc.), details of the surgical procedure and postoperative course (e.g. duration of mechanical ventilation, length of stay (LOS), documented infections (respiratory, urinary and catheter infections), and incidence of acute renal failure or need for renal replacement therapy (RRT).

Statistical analysis

Continuous variables were summarized with means (standard deviation, SD) or medians and IQR and categorical variables were summarized using frequencies and percentages. The degree of association between oral neutrophil counts (swab and rinse) was determined using Spearman's correlation [20]. Changes between preoperative and postoperative neutrophil counts were compared using Wilcoxon signed-rank test. To compare the changes in the oral swab between groups with low baseline oral neutrophils and high baseline neutrophils we used Wilcoxon rank-sum test. Association between change in oral neutrophil counts and measured cytokines in blood samples was compared using Spearman rank correlation coefficient (all values were transformed to a logarithmic scale for analysis). Linear regression was used to determine the association of measured covariates and change in pre- and postoperative oral neutrophil counts. Consideration for inclusion of a variable in the multivariable model required a p-value <0.2 in the univariable analysis. Differences were considered significant at p-value ≤ 0.05 . All analyses were performed without adjusting for multiple-comparison using SAS 9.3 (SAS Institute Inc., Cary, NC, USA).

Results

Population characteristics

There were 41 patients enrolled with a median age of 67 years (IQR, 60–72), years; 78% were male; 76% were Caucasian; and there was a high co-morbid burden of disease: diabetes mellitus (24%), hypertension (73%), and renal disease (20%) (Table 1). CPB was indicated for 21 (51%) valve replacements and 20 (49%) vessel grafts: single vessel (10%), double bypass (20%), triple bypass (50%) and quadruple bypass (20%). The median length of time spent on bypass was 132 mins (IQR, 113–148 mins) and with the aorta cross-clamped 107 mins (IQR, 93–122 mins). Acute Physiology and Chronic Health Evaluation (APACHE) II and Multiple Organ Dysfunction Score (MODS) scores were 22 (SD ± 4) and 6.2 (SD ± 2.2), respectively on the day of admission (Table 1). Patients

Table 1 Baseline characteristics of patients in study (n = 41)

Characteristic	Mean (SD)
Age – yrs	67 (60–72)
Male sex – no. (%)	32 (78)
Co-morbidities	
Diabetes Mellitus (requiring OHGs or insulin) – no. (%)	10 (24)
Smoking status reported as active – no. (%)	5 (12)
Hypertension	30 (73)
Renal insufficiency	8 (20)
Medication use – no. (%)	
Statin	22 (54)
NSAID	2 (5)
ACE Inhibitor	13 (32)
Details of Surgery	
CPB time – mins*	132 (113–148)
Cross-clamp time – mins*	107 (93–122)
Temperature (low) – degrees Celsius*	32.2 (31.6–33.1)
Blood transfusion within 0–6 hrs of CPB initiation	10 (24)
Postoperative course	
Delta creatinine (baseline – immediate postoperative; $\mu\text{mol/L}$)*	3 (–2,12)
Any renal replacement therapy – no. (%)	0 (0)
Documented infection in CVICU – no. (%)	1 (2)
Patients in receipt of antibiotic therapy – no. (%)	4 (10)
Severity of Illness	
APACHE II score	22 (4.4)
MODS postoperative day 0	6.2 (2.2)
MODS postoperative day 1	0.82 (1.5)
MODS postoperative day 2	0.63 (1.4)
MODS postoperative day 3	0.34 (1.2)
Ventilator use in days – no. (%)	
1 day	36 (88)
2 days	3 (7)
3 days	1 (2)
11 days	1 (2)
Length of stay in ICU – days*	2 (2–5)
Length of hospitalization*	8 (7–10)

*Median (IQR).

OHGs: oral hypoglycemic agents; NSAID: non-steroidal anti-inflammatory drug; ACE: angiotensin-converting-enzyme; CPB: cardiopulmonary bypass; CVICU: cardiovascular intensive care unit; APACHE: Acute Physiology and Chronic Health Evaluation; MODS: Multiple Organ Dysfunction Score.

were mechanically ventilated for a median of one-day (IQR, 1–1 days) and median hospital length of stay was 8 days (IQR, 7–10 days). At the time of hospital discharge, 35 patients (85%) went home whereas the remaining patients went to a rehabilitation facility.

Oral neutrophil counts and CPB-associated inflammation

A significant correlation was seen between absolute oral neutrophil counts measured by oral swab as compared to oral rinse ($\rho = 0.83$ [$p < 0.001$] and 0.70 [$p < 0.001$] for T_0 and T_3 , respectively). No significant correlation was seen between absolute oral neutrophil counts as measured by oral swab and circulating neutrophils measured in the peripheral circulation at any time point (Table 2). A significant difference was seen in the median oral neutrophil counts (oral swab) between both T_0 and T_1 (1.0×10^6 ; IQR, $3.9 \times 10^5 - 3.3 \times 10^6$; $p < 0.001$) and between T_0 and T_2 (1.3×10^5 ; IQR, $-1.1 \times 10^5 - 5.9 \times 10^5$; $p = 0.03$) but not between T_0 and T_3 (1.6×10^4 ; IQR, $-2.8 \times 10^5 - 2.3 \times 10^5$; $p = 0.95$; Table 3). Similar results were found with the oral rinse. Median differences in neutrophil counts in the peripheral circulation were 8.3×10^9 (IQR, $4.7 \times 10^9 - 1.1 \times 10^{10}$), 6.7×10^9 (IQR, $4.9 \times 10^9 - 1.1 \times 10^{10}$), 4.7×10^9 (IQR, $3.1 \times 10^9 - 7.1 \times 10^9$), and 1.5×10^9 (IQR, $8.0 \times 10^8 - 3.1 \times 10^9$) between T_1 , T_2 , T_3 , T_7 and T_0 , respectively. Significant increases were seen in the absolute neutrophil counts in the blood between T_0 and all other time points, including day 7 ($p < 0.001$).

We first looked at univariate associations between change in oral neutrophils immediately following CPB ($T_0 - T_1$) and age, body mass index, gender, smoking status (only 5 patients were active smokers), use of immune mediating medication (statins/NSAIDs/ACE inhibitors or plavix), pre-operative chlorhexidine rinse, blood transfusion, intraoperative temperature low, CPB time, cross-clamp time, number of vessels bypassed, valve replacement, aortic graft (only 5 patients), delta creatinine and need for vasopressors. Need for intraaortic balloon pump (IABP) or renal replacement therapy and intra-operative solumedrol administration could not be considered as no patient received RRT, only one patient required IABP, and one patient received intraoperative solumedrol administration. The only variables with p-value < 0.2 in the univariable analysis is preoperative chlorhexidine wash (p-value = 0.01) and therefore no multiple regression analysis was performed. The same variables were used in univariable analyses (t-test or Pearson's correlation for continuous variables) for change in oral neutrophils between T_0 and T_3 . The following variables had a p-value < 0.2 : gender ($p = 0.032$), use of an immune mediating medication ($p = 0.14$), blood transfusion ($p = 0.06$), valve replacement ($p = 0.017$), aorta graft ($p = 0.1$; only 5 patients in aorta graft), intraoperative temperature low ($p = 0.08$), and greater number of vessels bypassed ($p = 0.001$). We started with all variables in the multiple regression models and then used backward selection method; in the final model gender was removed as not significant and only number of vessels bypassed was left ($p = 0.001$).

Analysis of oral neutrophil counts identified two populations differentiated by their immediate response to CBP

Table 2 Correlation between neutrophils collected from the oral cavity and peripheral blood

	Oral neutrophil counts		Peripheral blood neutrophil counts	
	Correlation (95% CI)	p-value for null hypothesis rho = 0	Correlation (95% CI)	p-value for null hypothesis rho = 0
Oral swab T ₀	0.83 (0.70, 0.91)	<0.0001	-0.01 (-0.32, 0.30)	0.95
Oral swab T ₁	NA	..	-0.04 (-0.35, 0.28)	0.81
Oral swab T ₂	NA	..	-0.01 (-0.32, 0.30)	0.94
Oral swab T ₃	0.70 (0.48, 0.83)	<0.0001	-0.11 (-0.41,0.21)	0.49

(difference between T₀ and T₁ oral neutrophil counts, Figure 1). Group 1 had baseline (T₀) oral neutrophil counts $\leq 1 \times 10^6$; and oral neutrophil counts did not significantly change after CPB (T₁ $\leq 1.6 \times 10^5$; IQR, $1.1 \times 10^5 - 4.8 \times 10^5$). Group 2 had higher baseline oral neutrophil counts (T₀ $\geq 1 \times 10^6$) that increased significantly after CPB (T₁ = 1.9×10^6 ; IQR, $8.7 \times 10^5 - 4.0 \times 10^6$; p-value = 0.0002). No statistically significant difference was seen between median oral neutrophil counts at any other time point between these patient groups (Table 4).

Biomarkers and CPB

Serum levels of IL-1 β , IL-6, IL-10, MCP-1, IL-12 and IL-1RA significantly increased after CPB (T₀ as compared to T₁): mean difference, 1.45 ng/mL, 197.6 ng/mL, 28.2 ng/mL, 181.1 ng/mL, 9.1 ng/mL, and 4533.9 ng/mL, respectively. No significance difference in IL-2, IL-17, sICAM and GM-CSF levels were seen between T₀ as compared to T₁: mean difference, -1.0 ng/mL (p = 0.56), -1.3 ng/mL (p = 0.23), -3493.7 ng/mL (p = 0.42) and -6.56 ng/mL (p = 0.34) (p = 0.18; Figures 2 and 3).

Neutrophil counts, biomarkers and severity of illness markers

All patients included survived to hospital discharge. Of special note, 3 (7%) of patients had a documented infection (clinical suspicion and positive cultures) and the mean change creatinine was 6 μ mol/L (SD, ± 17 μ mol/L).

No significant correlations were seen between the change in oral or blood neutrophil counts (T₀ as compared to T₁) and the change in differences in the levels of any biomarker: IL-1 β (rho = 0.25; p = 0.14), IL-2

(rho = 0.10; p = 0.55), IL-6 (rho = 0.09; p = 0.58), IL-10 (rho = -0.07; p = 0.69), IL-12 (rho = 0.14; p = 0.39), IL-17A (rho = -0.06; p = 0.73), MCP-1 (rho = 0.11; p = 0.53), IL-1RA (rho = 0.31; p = 0.06), sICAM1 (rho = -0.01; p = 0.98) and GM-CSF (rho = 0.02; p = 0.93). Significant correlations however were seen between the change in log oral neutrophil counts (T₀ as compared to T₁) and the change in log levels of the biomarkers: IL-17 (rho = -0.34; p = 0.04), and sICAM (rho = 0.32; p = 0.05). The change seen in log blood neutrophils, comparing the same time points was found to negatively correlate with sICAM (rho = -0.41; p = 0.01).

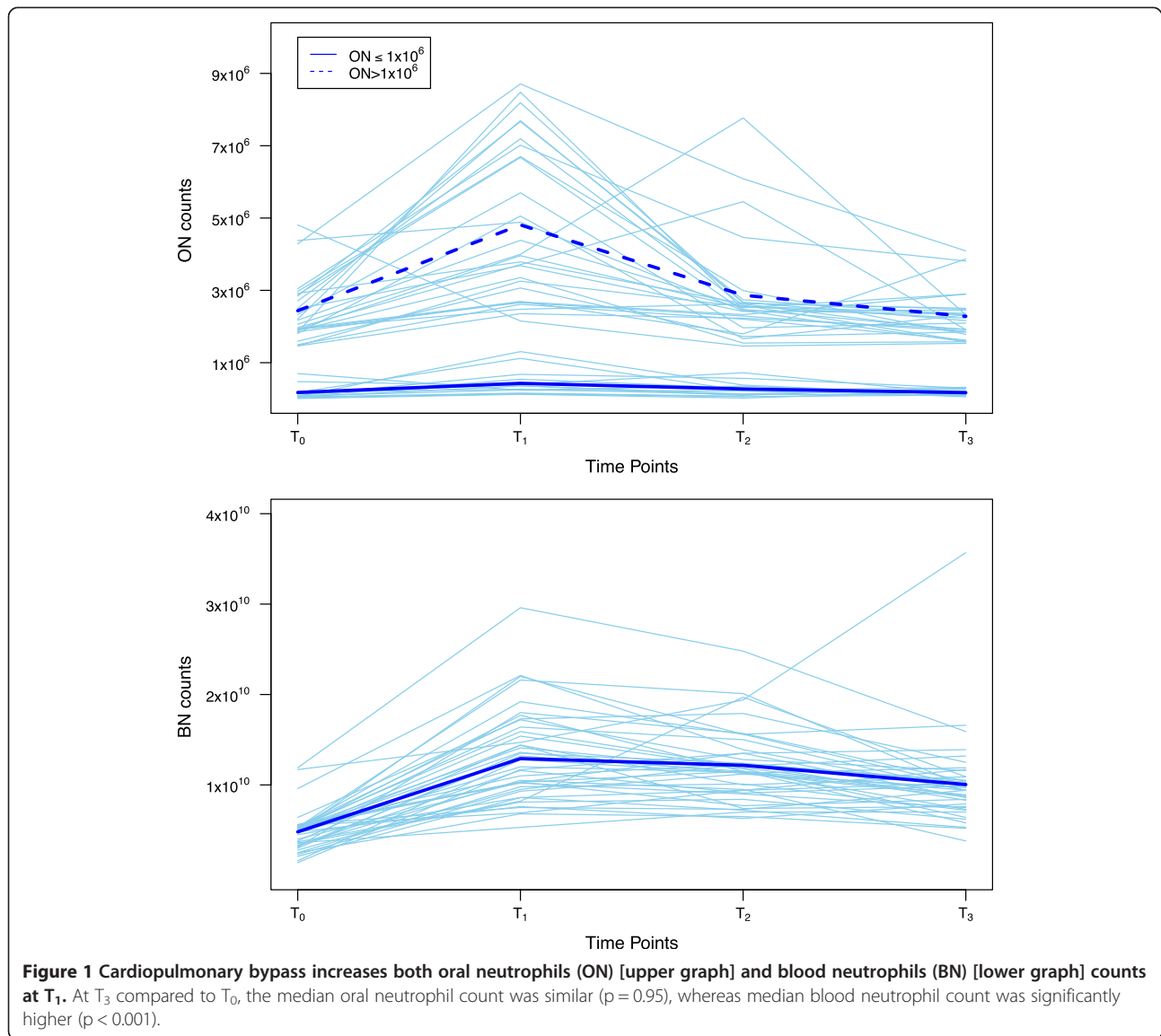
Statistically significant positive correlations were seen in the differences in log oral neutrophil counts, T₀ as compared to T₁, and the MODS on days 1 (rho = 0.31; p = 0.05) and 3 (rho = 0.38; p = 0.01); no significant correlation was seen with MODS on day 0 or 2 (Table 5). Differences in log blood neutrophil counts, T₀ as compared to T₁, were negatively correlated with MODS on days 1 and 2 (rho = -0.44 and -0.32, respectively; p < 0.01 and 0.04). No significant correlation was seen with MODS on days 0 and 3; trends towards negative correlations (rho = -0.24 and -0.21, respectively). No significant correlation was seen between either differences in log oral or blood neutrophil counts, T₀ as compared to T₁, and change in creatinine levels (rho = 0.07; p = 0.69 and rho = -0.11; p = 0.48, respectively).

Discussion

Temporal difference between the mean blood and oral neutrophil counts in patients after CPB (a model of immune system activation) may predict vulnerability to CPB-related morbidity due to immune system dysregulation. The kinetics of delivery of neutrophils to tissues may be a more relevant determinant and marker of susceptibility to infection, and/or ongoing inflammation, than circulating white blood cell counts [11]. In this study, oral and blood neutrophil counts increased immediately after CPB, however oral neutrophil counts return to baseline by day 3 whereas peripheral circulating neutrophil counts remained (persistently) elevated at day 7. Associations between oral neutrophils and measured biomarkers IL-17 and sICAM before and immediately after CPB were found to be statistically significant. Interestingly, these were not the mediators that were most changed immediately after CPB but may

Table 3 Wilcoxon signed rank test of delta neutrophils for before and after cardiopulmonary bypass

Comparison groups	Median	Interquartile range (IQR)	p-value
Oral swab T ₀ :T ₁	1.0×10^6	$3.9 \times 10^5 - 3.3 \times 10^6$	< 0.001
Oral swab T ₀ :T ₂	1.3×10^5	$-1.1 \times 10^5 - 5.9 \times 10^5$	0.03
Oral swab T ₀ :T ₃	1.6×10^4	$-2.8 \times 10^5 - 2.3 \times 10^5$	0.95
Blood T ₀ :T ₁	8.3×10^9	$4.7 \times 10^9 - 1.1 \times 10^{10}$	< 0.001
Blood T ₀ :T ₂	6.7×10^9	$4.9 \times 10^9 - 9.5 \times 10^9$	< 0.001
Blood T ₀ :T ₃	4.7×10^9	$3.1 \times 10^9 - 7.1 \times 10^9$	< 0.001
Blood T ₀ :T ₇	1.5×10^9	$8.0 \times 10^8 - 3.1 \times 10^9$	< 0.001



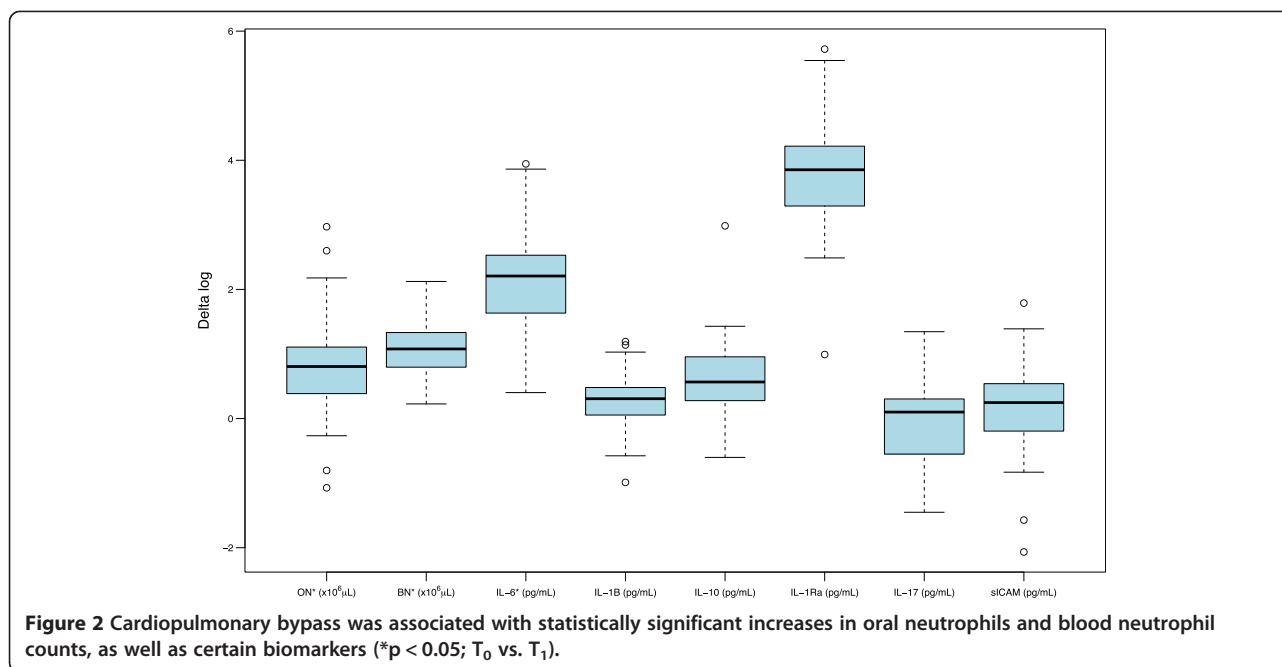
provide the most relevant information regarding immune status [2,3,21].

Neutrophil activation is an integral component of the systemic host response. Neutrophils are the most abundant inflammatory cells, and their activation is essential for host defence against bacterial or fungal infection, as well as being principally involved in host injury in states of persistent inflammation. Neutrophil tissue repopulation following

hematopoietic stem cell transplantation (HSCT) confers protection from infection [13]; whereas an excessive PMN response has previously been implicated in the pathogenesis of capillary leak syndromes resulting in decreased perfusion and end-organ damage, including acute respiratory distress syndrome and MOF [22-24]. The association of increased sICAM and IL-17 activity with an increase in the number of oral neutrophils suggests that oral neutrophil

Table 4 Wilcoxon rank-sum test of delta neutrophils for before and after cardiopulmonary bypass in two groups of patients (based on baseline oral neutrophil count)

Comparison groups	Median (IQR)		p-value
	Oral neutrophil counts T ₀ ≤ 1x10 ⁶ /μL	Oral neutrophil counts T ₀ ≥ 1x10 ⁶ /μL	
Oral swab T ₀ :T ₁	1.6x10 ⁵ (1.1x10 ⁵ – 4.8x10 ⁵)	1.9x10 ⁶ (8.7x10 ⁵ – 4.0x10 ⁶)	0.0002
Oral swab T ₀ :T ₂	5.4x10 ⁴ (1.3x10 ⁴ – 2.7x10 ⁵)	2.7x10 ⁵ (–1.3x10 ⁵ – 7.0x10 ⁵)	0.40
Oral swab T ₀ :T ₃	3.6x10 ⁴ (–3.9x10 ⁴ – 1.7x10 ⁵)	–4.4x10 ⁴ (–3.8x10 ⁵ – 3.7x10 ⁵)	0.90

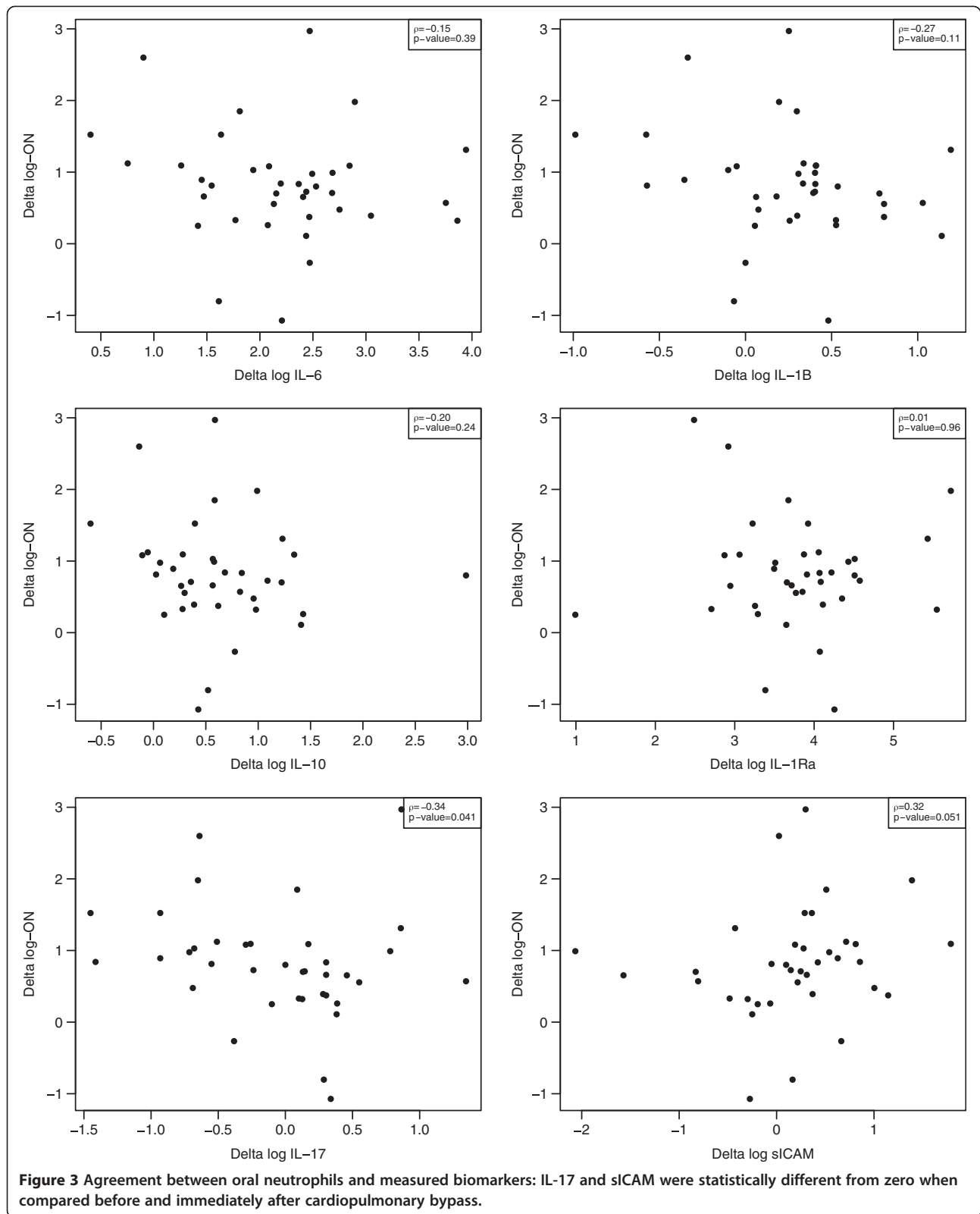


transmigration may be a viable surrogate marker of the acute pro-inflammatory immune response. IL-17, produced primarily by CD4+ Th17 cells, acts to enhance chemokine production by target cells in various tissues to promote/attract monocytes and neutrophils to those tissue (especially mucosal) sites, and in combination with sICAM suggests the predominance of a Th1 phenotypic response (acute pro-inflammatory state) [25-30]. IL-17 promotes endothelial activation by inducing the expression of endothelial adhesion markers (E-selectin, VCAM-1, and ICAM-1) in a p38 MAPK-dependent manner. This increased expression of adhesion molecules stimulates the trans-endothelial migration of neutrophils) [25-29]. Preventing neutrophil recruitment through blocking the action of IL-17 on endothelial cells (or on PMNs themselves) may prove to be highly beneficial in diseases in which neutrophilic inflammation plays a key role [25-30]. In animal models, reducing neutrophil invasion through IL-17A-blocking antibody has been shown to decrease infarct size and improved neurologic outcome in ischemic stroke [31] and has been shown to improve survival in endotoxic shock [32,33].

The timing of neutrophil recovery to the oral cavity following HSCT was recently found to have predictive value for future infections post-engraftment in a paediatric population [15] and be predictive of prognosis in an adult HSCT population [34]. Further, in a murine model the kinetics of neutrophil delivery to tissues during the engraftment phase was a better predictor of reconstitution of the immune system than reappearance of circulating neutrophils in the blood [35]. Neutrophil delivery to oral tissues has also been shown to predict success of

HSCT at 6 months [34]. Neutrophil recovery from the oral cavity occurred more than one week earlier than that from the circulating blood and the time span between blood and oral neutrophil engraftment was inversely related to improved outcomes (i.e. longer delays between oral and blood engraftment predicted better outcome at 6 months) [34]. Should patients with persistent elevations in ON counts trend towards a worse outcome then early intervention (e.g. implementing a low tidal ventilation strategy) could decrease the pro-inflammatory cytokine response leading to end-organ failure [36,37]. It is important to note that there appears to be two patient populations based on the oral neutrophil levels. The first population has no change in their oral neutrophil levels from T_0 to T_1 where as a second population (the majority of the patients) did show an increase in that interval. This suggests that this test may have the ability to discriminate and identify unique patient populations based on neutrophil activation whereas the blood levels increased in all patients. One could hypothesize that whereas all patients had an increase of neutrophil levels in the circulation either through demargination or recruitment from the bone marrow, one subset of patients had neutrophils activated to the point where they were recruited into the oral cavity whereas a second smaller subset showed no such activation. A larger trial may be able to determine if the oral neutrophil clinical parameter has the sensitivity to identify patients at risk of poor outcomes.

Limitations of this study would include the small number of patients and the fact that none of the patients developed organ failure. The incidence of MOF from patients undergoing CPB is small (<5%) [38] and would



necessitate a large patient sample to determine whether ON would predict an increase priming of PMNs and the development of MOF. However the number of patients

in this study was chosen so as to have sufficient power to delineate differences in oral neutrophil counts, peripheral blood neutrophil counts and cytokine production

Table 5 Spearman correlation coefficients and delta neutrophils (oral and circulating blood) for before and after cardiopulmonary bypass as compared with MODS on days 0 to 3

Comparison groups	Spearman correlation coefficient, (p-value for null hypothesis rho = 0)			
	MODS day 0	MODS day 1	MODS day 2	MODS day 3
Oral neutrophil counts T ₀ :T ₁	0.17 (0.41)	-0.18 (0.26)	-0.08 (0.64)	0.10 (0.55)
Oral neutrophil counts T ₀ :T ₂	-0.01 (0.97)	0.18 (0.27)	0.02 (0.20)	0.27 (0.09)
Oral neutrophil counts T ₀ :T ₃	-0.23 (0.17)	0.09 (0.58)	0.14 (0.38)	0.06 (0.73)
Log oral neutrophil counts T ₀ :T ₁	0.27 (0.09)	0.31 (0.05)	0.27 (0.09)	0.38 (0.01)
Log oral neutrophil counts T ₀ :T ₂	0.13 (0.43)	0.35 (0.03)	0.28 (0.08)	0.39 (0.01)
Log oral neutrophil counts T ₀ :T ₃	-0.14 (0.41)	0.11 (0.48)	0.12 (0.46)	0.10 (0.53)
Circulating blood neutrophil counts T ₀ :T ₁	-0.17 (0.29)	-0.24 (0.13)	-0.21 (0.19)	-0.07 (0.65)
Circulating blood neutrophil counts T ₀ :T ₂	-0.28 (0.08)	-0.14 (0.38)	0.01 (0.95)	-0.03 (0.83)
Circulating blood neutrophil counts T ₀ :T ₃	-0.43 (0.01)	-0.20 (0.18)	-0.13 (0.40)	-0.14 (0.38)
Log circulating blood neutrophil counts T ₀ :T ₁	-0.24 (0.13)	-0.44 (0.01)	-0.32 (0.04)	-0.22 (0.17)
Log circulating blood neutrophil counts T ₀ :T ₂	-0.22 (0.17)	-0.25 (0.12)	-0.06 (0.69)	-0.14 (0.38)
Log circulating blood neutrophil counts T ₀ :T ₃	-0.39 (0.01)	-0.25 (0.11)	-0.15 (0.35)	-0.12 (0.46)

based on previous CPB studies. Although in the present study no patients developed organ failure, the data suggests that these patients' PMNs levels increased early following CPB, and therefore according to the two-hit model of MOF [10,39], were rendered vulnerable to end-organ dysfunction from such insults as post-operative bleeding or infection. Further, CPB was associated with an early, transient increase in oral neutrophil counts that correlated with the systemic inflammatory response as measured by certain cytokines and may be an additional marker of neutrophil or endothelial activation; identifying measures of oral neutrophil counts as a possible earlier indicator of a patient's vulnerability to MOF. In addition, valuable information would be gathered by assessing neutrophil function, not just absolute number, through the measurement of myeloperoxidase activity. The local tissue inflammatory response could be assessed by measurement of local mediators. Given that this was a proof of concept study these investigations were not done. Strengths of this study would include demonstration of feasibility, that the oral rinse and swab provided similar results and therefore both techniques can be performed making these methods usable in critically ill patient population. Further, while the number of circulating PMNs seems to respond with relatively transient changes in immune status and seem to recover more slowly, it does not provide a functional assessment of PMN activity. Oral PMN counts are an established measure of functional activity; oral neutrophil counts measure PMN functional status as they reflect the ability of PMNs to transmigrate from the circulation to the mucosal surface [40-43]. Future studies will better investigate the relationship between morbidity and mortality in

a critically ill patient population, with the goal of identifying patients at increased risk of poor outcomes.

Conclusions

- sICAM and IL-17 activity is associated with increases in oral neutrophil number suggesting that oral neutrophil transmigration may be a surrogate marker of the acute pro-inflammatory immune response.
- Future studies should investigate the relationship between morbidity and mortality in a critically ill patient population and oral neutrophil transmigration, to identify patients at greatest risk of poor outcomes.

Competing interests

The authors declare that they have no competing interests.

Authors' contributions

Conception and design: MEW, EC, CDS, GDR, MG; Analysis and interpretation: MEW, PPE, AD, AJ, CDS, GDR, SS, WCL, MG; Drafting the manuscript for important intellectual content: MEW, CDS, GDR, WCL, MG; Final draft of manuscript was approved by all authors.

Acknowledgements

We thank Nicole Marinoff, Research Coordinator, and Mehar-Un-Nisa Sana Rashid, Research Assistant, for their assistance in patient recruitment/consent and sample management. We would also like to thank Yuexin Shan for her time and laboratory expertise.

There was no external funding source for this study.

Author details

¹Interdepartmental Division of Critical Care, University Health Network, Toronto, Canada. ²Division of Critical Care, Department of Medicine, University of Montreal, Montreal, Canada. ³Interdepartmental Division of Critical Care, Trauma, Emergency and Critical Care Program, Sunnybrook Health Sciences Centre, Toronto, Canada. ⁴Faculty of Dentistry, University of Toronto, Matrix Dynamics Group, Toronto, Canada. ⁵Interdepartmental

Division of Critical Care, St. Michael's Hospital, Keenan Research Centre of Li Ka Shing Knowledge Institute, Toronto, Canada. ⁶Department of Dentistry, Sunnybrook Health Sciences Centre, Toronto, Canada. ⁷Division of Allergy and Infectious Disease, University of Washington, Seattle, USA.

Received: 18 November 2013 Accepted: 3 October 2014

Published online: 18 October 2014

References

- Dellinger R, Carlet J, Masur H, Gerlach H, Calandra T, Cohen J, Gea-Banacloche J, Keh D, Marshall J, Parker M, Ramsay G, Zimmerman J, Vincent J, Levy M, and for the Surviving Sepsis Campaign Management Guidelines Committee: **Surviving sepsis campaign guidelines for management of severe sepsis and septic shock.** *Crit Care Med* 2004, **32**:858–873.
- Fung Y, Silliman C, Minchinton R, Wood P, Fraser J: **Cardiopulmonary bypass induces enduring alterations to host neutrophil physiology: a single-center longitudinal observational study.** *Shock* 2008, **30**:642–648.
- Meng QH, Zhu S, Sohn N, Mycyk T, Shaw SA, Dalshaug G, Krahn J: **Release of cardiac biochemical and inflammatory markers in patients on cardiopulmonary bypass undergoing coronary artery bypass grafting.** *J Card Surg* 2008, **23**(6):681–687.
- Brix-Christensen V, Rheling M, Flo C, Ravn H, Hjortdal V, Marqvorsen J, Andersen N, Tonnesen E: **Neutrophil and platelet dynamics at organ level after cardiopulmonary bypass: an in vivo study in neonatal pigs.** *APMIS* 2004, **112**(2):133–140.
- Chenoweth DE, Cooper SW, Hugli TE, Stewart RW, Blackstone EH, Kirklin JW: **Complement activation during cardiopulmonary bypass: evidence for generation of C3a and C5a anaphylatoxins.** *N Engl J Med* 1981, **304**(9):497–503.
- Howard RJ, Crain C, Franzini DA, Hood CI, Hugli TE: **Effects of cardiopulmonary bypass on pulmonary leukostasis and complement activation.** *Arch Surg* 1988, **123**(12):1496–1501.
- Biglioli P, Cannata A, Alamanni F, Naliato M, Porqueddu M, Zanobini M, Tremoli E, Parolari A: **Biological effects of off-pump vs. on-pump coronary artery surgery: focus on inflammation, hemostasis and oxidative stress.** *Eur J Cardiothorac Surg* 2003, **24**(2):260–269.
- Diegeler A, Doll N, Rauch T, Haberer D, Walther T, Falk V, Gummert J, Autschbach R, Mohr FW: **Humoral immune response during coronary artery bypass grafting: a comparison of limited approach, "off-pump" technique, and conventional cardiopulmonary bypass.** *Circulation* 2000, **102**(19 Suppl 3):III95–III100.
- Gessler P, Pfenninger J, Pfammatter J-P, Carrel T, Dahinden C: **Inflammatory response of neutrophil granulocytes and monocytes after cardiopulmonary bypass in pediatric cardiac surgery.** *Intensive Care Med* 2002, **28**(12):1786–1791.
- Partrick DA, Moore EE, Fullerton DA, Barnett CC Jr, Meldrum DR, Silliman CC: **Cardiopulmonary bypass renders patients at risk for multiple organ failure via early neutrophil priming and late neutrophil disability.** *J Surg Res* 1999, **86**(1):42–49.
- Fung YL, Fraser JF, Wood P, Minchinton RM, Silliman CC: **The systemic inflammatory response syndrome induces functional changes and relative hyporesponsiveness in neutrophils.** *J Crit Care* 2008, **23**:542–549.
- Silliman CC: **The two-event model of transfusion-related acute lung injury.** *Crit Care Med* 2006, **34**:S124–S131.
- Wright DG, Meierovics AI, Foxley JM: **Assessing the delivery of neutrophils to tissues in neutropenia.** *Blood* 1986, **67**(4):1023–1030.
- Akpek G, Knight RD, Wright DG: **Use of oral mucosal neutrophil counts to detect the onset and resolution of profound neutropenia following high-dose myelosuppressive chemotherapy.** *Am J Hematol* 2003, **72**(1):13–19.
- Cheretakis C, Dror Y, Glogauer M: **A noninvasive oral rinse assay to monitor engraftment, neutrophil tissue delivery and susceptibility to infection following HSCT in pediatric patients.** *Bone Marrow Transplant* 2005, **36**(3):227–232.
- Raeste AM, Tapanila T, Tupakka R: **Leukocyte migration into the healthy dentulous mouth. A study in children, adolescents and adults.** *J Periodontol Res* 1977, **12**(6):444–449.
- Ashkenazi M, Dennison DK: **A new method for isolation of salivary neutrophils and determination of their functional activity.** *J Dent Res* 1989, **68**(8):1256–1261.
- Bender JS, Thang H, Glogauer M: **Novel rinse assay for the quantification of oral neutrophils and the monitoring of chronic periodontal disease.** *J Periodontol Res* 2006, **41**(3):214–220.
- Landzberg ME: **Evaluation of a colorimetric assay as a screening test for periodontal disease,** ProQuest Dissertations and Theses. Toronto, ON: University of Toronto; 2009.
- Fieller EC, Hartley HO, Pearson ES: **Tests for rank correlation coefficients.** *I. Biometrika* 1957, **44**:470–481.
- Clajus C, Lukasz A, David S, Hertel B, Lichtinghagen R, Parikh SM, Simon A, Ismail I, Haller H, Kumpers P: **Angiopoietin-2 is a potential mediator of endothelial barrier dysfunction following cardiopulmonary bypass.** *Cytokine* 2012, **60**(2):352–359.
- Partrick DA, Moore FA, Moore EE, Barnett CC Jr, Silliman CC: **Neutrophil priming and activation in the pathogenesis of postinjury multiple organ failure.** *New Horiz* 1996, **4**(2):194–210.
- Weiss SJ: **Tissue destruction by neutrophils.** *N Engl J Med* 1989, **320**(6):365–376.
- Welbourn CR, Goldman G, Paterson IS, Valeri CR, Shepro D, Hechtman HB: **Pathophysiology of ischaemia reperfusion injury: central role of the neutrophil.** *Br J Surg* 1991, **78**(6):651–655.
- Gaffen SL, Hajishengallis G: **A new inflammatory cytokine on the block: re-thinking periodontal disease and the Th1/Th2 paradigm in the context of Th17 cells and IL-17.** *J Dent Res* 2008, **87**(9):817–828.
- Nakae S, Iwakura Y, Suto H, Galli SJ: **Phenotypic differences between Th1 and Th17 cells and negative regulation of Th1 cell differentiation by IL-17.** *J Leukoc Biol* 2007, **81**(5):1258–1268.
- Suryani S, Sutton I: **An interferon-gamma-producing Th1 subset is the major source of IL-17 in experimental autoimmune encephalitis.** *J Neuroimmunol* 2007, **183**(1–2):96–103.
- Katayama M, Ohmura K, Yukawa N, Terao C, Hashimoto M, Yoshifuji H, Kawabata D, Fujii T, Iwakura Y, Mimori T: **Neutrophils are essential as a source of IL-17 in the effector phase of arthritis.** *PLoS One* 2013, **8**(5):e62231. doi:10.1371/journal.pone.0062231.
- Garley M, Jablonska E: **Chosen IL-17 family proteins in neutrophils of patients with oral inflammation.** *Adv Med Sci* 2008, **53**(2):326–330. doi:10.2478/v10039-008-0044-6.
- Lin AM, Rubin CJ, Khandpur R, Wang JY, Riblett M, Yalavarthi S, Villanueva EC, Shah P, Kaplan MJ, Bruce AT: **Mast cells and neutrophils release IL-17 through extracellular trap formation in psoriasis.** *J Immunol* 2011, **187**(1):490–500. doi:10.4049/jimmunol.1100123. Epub 2011 May 23.
- Gelderblom M, Weymar A, Bernreuther C, Velden J, Arunachalam P, Steinbach K, Orthely E, Arumugam TV, Leyboldt F, Simova O, Thom V, Friese MA, Prinz I, Hölscher C, Glatzel M, Korn T, Gerloff C, Tolosa E, Magnus T: **Neutralization of the IL-17 axis diminishes neutrophil invasion and protects from ischemic stroke.** *Blood* 2012, **120**(18):3793–3802. doi:10.1182/blood-2012-02-412726. Epub 2012 Sep 13.
- Bosmann M, Sarma JV, Atefi G, Zetoune FS, Ward PA: **Evidence for anti-inflammatory effects of C5a on the innate IL-17A/IL-23 axis.** *FASEB J* 2012, **26**:1640–1651.
- Bosmann M, Ward PA: **Therapeutic potential of targeting IL-17 and IL-23 in sepsis.** *Clin Trans Med* 2012, **1**:4. 2012. 1(4).
- Forster C, Aboodi G, Lipton J, Glogauer M: **A non-invasive oral rinse assay predicts bone marrow engraftment and 6 months prognosis following allogeneic hematopoietic stem cell transplantation.** *J Oral Pathol Med* 2012, **41**(2):165–170.
- Cheretakis C, Leung R, Sun CX, Dror Y, Glogauer M: **Timing of neutrophil tissue repopulation predicts restoration of innate immune protection in a murine bone marrow transplantation model.** *Blood* 2006, **108**(8):2821–2826.
- Ei Azab SR, Rosseel PMJ, de Lange JJ, Groeneveld ABJ, van Strik R, van Wijk EM, Scheffer GJ: **Dexamethasone decreases the pro- to anti-inflammatory cytokine ratio during cardiac surgery.** *Br J Anaesth* 2002, **88**(4):496–501.
- Abdel-Rahman U, Margraf S, Aybek T, Logters T, Bitu-Moreno J, Francischetti I, Kranert T, Grunwald F, Windolf J, Moritz A, Scholz M: **Inhibition of neutrophil activity improves cardiac function after cardiopulmonary bypass.** *J Inflamm* 2007, **4**:21.
- Sellke F, DiMaio J, Caplan L, Ferguson T, Gardner T, Hiratzka L, Isselbacher E, Lytle B, Mack M, Murkin J, Robbins R, and for the American Heart Association: **Comparing on-pump and off-pump coronary artery bypass grafting: numerous studies but few conclusions: a scientific statement**

from the American Heart Association council on cardiovascular surgery and anesthesia in collaboration with the interdisciplinary working group on quality of care and outcomes research. *Circulation* 2005, **111**(21):2858–2864.

39. Rabinovici R, Rabinovici R, Bugelski P, Esser K, Hillegass L, Vernick J, Feuerstein G: **ARDS-like lung injury produced by endotoxin in platelet activating factor primed rats.** *J Appl Physiol* 1993, **74**(4):1791–1802.
40. Dale DC, Liles WC, Llewellyn C, Price TH: **Effects of granulocyte-macrophage colony-stimulating factor (GM-CSF) on neutrophil kinetics and function in normal human volunteers.** *Am J Hematol* 1998, **57**(1):7–15.
41. Dale DC, Liles WC, Llewellyn C, Rodger E, Price TH: **Neutrophil transfusions: kinetics and functions of neutrophils mobilized with granulocyte-colony-stimulating factor and dexamethasone.** *Transfusion* 1998, **38**(8):713–721.
42. Hubel K, Rodger E, Gaviria JM, Price TH, Dale DC, Liles WC: **Effective storage of granulocytes collected by centrifugation leukapheresis from donors stimulated with granulocyte-colony-stimulating factor.** *Transfusion* 2005, **45**(12):1876–1889.
43. Price TH, Bowden RA, Boeckh M, Bux J, Nelson K, Liles WC, Dale DC: **Phase I/II trial of neutrophil transfusions from donors stimulated with G-CSF and dexamethasone for treatment of patients with infections in hematopoietic stem cell transplantation.** *Blood* 2000, **95**(11):3302–3309.

doi:10.1186/s12950-014-0032-5

Cite this article as: Wilcox et al.: Oral neutrophils are an independent marker of the systemic inflammatory response after cardiac bypass. *Journal of Inflammation* 2014 **11**:32.

Submit your next manuscript to BioMed Central and take full advantage of:

- Convenient online submission
- Thorough peer review
- No space constraints or color figure charges
- Immediate publication on acceptance
- Inclusion in PubMed, CAS, Scopus and Google Scholar
- Research which is freely available for redistribution

Submit your manuscript at
www.biomedcentral.com/submit

