

RESEARCH ARTICLE

Open Access

Genetic diversity of *Mycobacterium tuberculosis* isolates from Beijing, China assessed by Spoligotyping, LSPs and VNTR profiles

Bing Lu^{1†}, Ping Zhao^{2†}, Binbin Liu^{1,3†}, Haiyan Dong^{1†}, Qin Yu^{1,4}, Xiuqin Zhao¹ and Kanglin Wan^{1*}

Abstract

Background: Tuberculosis is one of the most infectious diseases in the world. Molecular typing methods such as spoligotyping, and VNTR (variable number tandem repeats), IS6110 in the NTF region and LSP (large sequence polymorphisms) analysis are generally useful tools for the resolution of various issues related to the classical epidemiology of *Mycobacterium tuberculosis* (*M. tuberculosis*).

Methods: To determine the transmission characteristics of *M. tuberculosis* strains isolated in Beijing, China, and their genetic relationships, especially those among Beijing family strains, 260 *M. tuberculosis* strains isolated from patients presenting pulmonary tuberculosis were analyzed by spoligotyping, and by examining 22 VNTR loci and the presence/absence of IS6110 in the NTF region, RD105 and RD181.

Results: 81% (211 strains) of the isolates studied were Beijing family strains, 174 (82.5%) of which were identified as modern Beijing strains based on the presence of IS6110 upstream of the NTF region. RD181 was intact in 9 of the other 37 (17.5%) ancestral Beijing strains. The percentage of Beijing family strains in this study was consistent with previous reports. There are many differences, however, in allele diversity among VNTR loci between reports on strains from different areas.

Conclusions: The Beijing family is the most prevalent genotype in Beijing city and the predominance of Beijing family strains has not altered in almost twenty years. Differences in the alleles and discrimination ability of VNTR loci between different regions is likely due to population differences in the regions where these *M. tuberculosis* strains were isolated or to differences in sampling times.

Keywords: *M. tuberculosis*, Beijing family, Genotyping

Background

Tuberculosis (TB) remains one of the most serious infectious diseases in the world. The *Mycobacterium tuberculosis* (*M. tuberculosis*) lineage of greatest significance in China is the Beijing family. This lineage, which was first described in 1995 [1], has been reported to cause major outbreaks worldwide [2,3].

M. tuberculosis Beijing family strains can be recognized on the basis of highly conserved spoligotyping (spacer

oligonucleotide typing) patterns (spacers 1–34 are absent) [4–6], and characteristic IS6110-RFLP patterns containing a high number of bands [7]. Strains lacking one or more of the last nine spacers in the spoligotyping pattern are called Beijing-like strains [8].

Beijing family strains have been divided into two major groups, modern and ancient, based on a specific IS6110 in the NTF region [6,9]. The group that has no IS6110 in the NTF region is thought to be the most ancient [10].

As with other PCR-based genotyping techniques, VNTR (variable number tandem repeats) typing is a promising, quick and easy genotyping method and can be used for epidemiological studies of Beijing strains [11]. This method is based on size analysis of PCR-amplified VNTR loci, and it requires only basic PCR and

* Correspondence: wankanglin@icdc.cn

†Equal contributors

¹State Key Laboratory for Infectious Diseases Prevention and Control, National Institute for Communicable Disease Control and Prevention & National Tuberculosis Reference Laboratory, Chinese Center for Disease Control and Prevention, Beijing 102206, P. R. China

Full list of author information is available at the end of the article

agarose electrophoresis equipment [12]. The number of repeat copies per locus may vary among strains, and the use of several such loci has sufficient discriminating power [13]. VNTR profiles are presented as multiple digit numerical codes, each digit representing the copy number of a locus. However these VNTR loci present multiple independent genetic markers and are therefore ideally suited for evolutionary analyses [10].

LSPs (Large sequence polymorphisms), described in numerous studies of the *M. tuberculosis* complex, are reported to give important insights into its evolution and biology [2]. One LSP (RD105) has been observed in all Beijing family strains and ancestral spoligotyping pattern strains [14]. Additional LSPs (RD181) further divide the Beijing family into subgroups [15].

The aims of the study were to analyze the distribution of the tuberculosis lineage in Beijing city and to compare our results with those from other areas in China. In this study, we collected 260 *M. tuberculosis* clinical isolates from Beijing city in 2009, and genotyped them by spoligotyping, VNTR, IS6110 in the NTF and LSP (RD105 and RD180) to provide some information of potential transmission and evolution.

Methods

M. tuberculosis clinical isolates

260 *M. tuberculosis* strains were collected from TB patients in Beijing, China in 2009. The patients were all diagnosed to have pulmonary tuberculosis according to the national guidelines of China, and were treated in local lung disease hospitals or tuberculosis hospitals. There was no direct transmission link between patients selected in this study. All patient samples were taken as part of standard care. Demographic data, including the identification number, sex, age, occupation, registered residence, current address, as well as results of mycobacterial smears, symptoms and treatment history were obtained from medical records provided by Chaoyang Centre for Disease Control and Prevention, Beijing.

Ethics statement

The study was approved by the Ethics Committee of the National Institute for Communicable Disease Control and Prevention, Chinese Center for Disease Control and Prevention. All patients in the study signed informed consent forms.

Culture of clinical isolates and DNA extraction

M. tuberculosis genomic DNA was extracted from mycobacterial colonies grown on Löwenstein-Jensen (LJ) medium by resuspending one loopful of mycobacterial colonies in 100 µl TE buffer (10 mM Tris-Cl, 1 mM EDTA) which was then incubated at 95°C for 15 min. Supernatants

containing the DNA were collected by centrifugation at 12,000 g for 3 min and stored at -20°C for further use.

Genotyping methods

Spoligotyping

Spoligotyping which relies on the highly polymorphic DR (direct repeat) locus in the genome of *M. tuberculosis*, is a novel method for defining the Beijing family. Spoligotyping was performed according to the method described by Kamerbeek et al. [5].

VNTR

22 VNTR loci, including 5 exact tandem repeat (ETR A,B, C,D and E) loci, 7 mycobacterial interspersed repetitive-units (MIRU10,16,23,26,27,39 and 40), 4 Mtub loci (Mtub4, 21, 30 and 39), 5 Qub (Queen's University of Belfast) loci (Qub11a, 11b, 18, 26, and 4156), and VNTR3820 locus, were analyzed in this study. PCR products were analyzed on 12 cm 2% agarose gels with 11 lanes. Each gel included two 100-bp DNA Markers (one on either side of the gel), an H37Rv sample as a positive control, and 8 samples. The copy number at each locus was calculated by BioNumerics software. Determination of the discriminatory power of the VNTR loci was calculated using the Hunter-Gaston discriminatory Index (HGDI) [16]. The HGDI was calculated using the following formula: $HGDI = 1 \left[\frac{1}{N(N-1)} \sum_{j=1}^s nj(nj-1) \right]$, where HGDI is the numerical index of discrimination, N is the total number of strains in the typing scheme, s is the total number of different strain types, and nj is the number of strains belonging to the jth type [17,18].

IS6110 in the NTF region

The IS6110 in the NTF region was analyzed according to methods used in previous studies [19]. All Beijing family strains identified by the spoligotyping method were amplified by PCR to detect the presence or absence of IS6110 in the NTF region. PCR analysis was performed using the following oligonucleotide primers: MDR-6, 5'-CCAGA TATCGGGTGTGTCGAC-3'; MDR-6r, 5'-TGCCGTTG TCGAAATCTAAACCC-3'. Strains with the insert yielded an amplified product of ≈1,800-bp, while those without the insert yielded an ≈700-bp PCR product [19,20].

Large sequence polymorphisms (LSPs)

RD105, and RD181 were analyzed in all the Beijing family strains from our study population, using a method described previously [15]. PCR analysis was performed using the following oligonucleotide primers: RD105L, 5'-GGAGTCGTTGAGGGTGTTC ATCAGCTCAGTC-3'; RD105R, 5'-CGCCAAGGCCG CATAGTCACGGTTCG-3'; RD181L, 5'-CGCAACGGC

Allelic diversity of the VNTR loci

We analyzed all 260 isolates by screening 22 VNTR loci to investigate the genotypic diversity of the population in detail. This genotyping method is used as a standard discrimination tool for *M. tuberculosis* because of its high powers of resolution among isolates from cosmopolitan origins [13]. VNTR results are shown in Additional file 1: Table S1 and VNTR profiles analyzed in this study are listed in Table 2. The cluster map in Figure 1 of the 260 *M. tuberculosis* strains was generated by BioNumerics 5.0. The 260 strains were classified as G1 to G4 strains using the cluster cutoff value calculated by the BioNumerics software according to VNTR results. G1 strains were further divided into three subgroups, G1-1, G1-2, and G1-3 (Figure 1). VNTR loci differed significantly in their allelic diversity and power of discrimination (Table 2). The VNTR3820 locus showed the highest allelic diversity among the 260 strains (0.851), while the ETRC locus showed the lowest allelic diversity (0.03).

The VNTR profiles of Beijing family strains analyzed in this and previous studies were combined and are

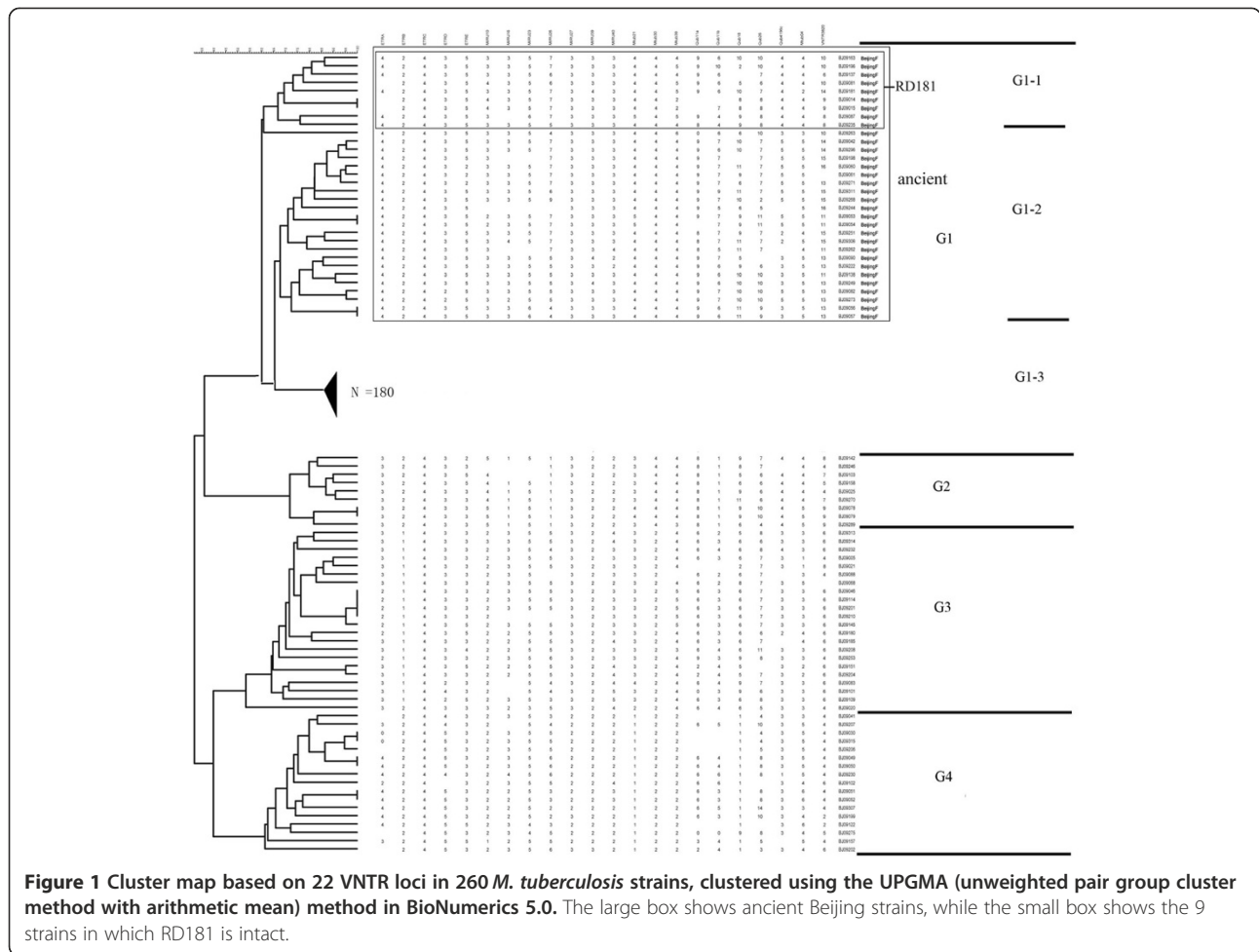
listed in Table 2. The VNTR3820 locus showed the highest allelic diversity among the 211 Beijing family strains (0.789), while the ETRC locus showed the lowest allelic diversity (0.028). Comparing the allelic diversity observed here with that of previous studies carried out in regions such as Jiangsu province or Shanghai city, both of which are located in the south of China [22,23], we found more differences in the allelic diversity of some loci (for example, ETRE and MIRU26). Furthermore, in a previous study on Beijing city, published by Jiao et al. four years ago [24], the alleles and discrimination power of MIRU16 and MIRU23 were very different to that observed in this study (Table 2). For instance, we obtained an HGDI for MIRU16 of 0.265, while Jiao et al., obtained a HGDI of 0.068; we observed five MIRU23 alleles (2, 3, 4, 5, 6), while only 2 alleles (5, 6) were observed by Jiao et al.

NTF and LSP

The RD105 deletion was found in 211 Beijing family strains. Of the 211 epidemiologically unlinked Beijing

Table 2 Diversity of VNTR loci and their profiles in all *M. tuberculosis* strains and Beijing family strains from Beijing city, Jiangsu and Shanghai (references).

Locus	Hunter-Gaston Index (total strains) N=260	No. of alleles (range)	Hunter-Gaston Index Beijing Family N=211	No. of alleles (Beijing family) (range)	Locus diversity of Beijing family strains in area of isolation		
					Beijing (Previous) [24] N=72 [alleles]	Jiangsu [23] N=209	Shanghai [22] (Chongming) N=65
VNTR3820	0.851	19 (2–22)	0.789	15 (6–22)			0.85
Qub11b	0.747	10 (1–10)	0.646	9 (1–10)	0.651 [5(3–7)]	0.625	0.65
Qub18	0.696	10 (1–11)	0.613	10 (1–11)			0.65
Qub11a	0.675	9 (2–11)	0.598	8 (3–11)			0.61
Qub26	0.654	12 (1–14)	0.57	11 (1–11)	0.518 [8(3–10)]	0.613	0.60
Mtub21	0.58	7 (1–7)	0.393	6 (1–7)	0.556 [5(1–6)]	0.535	0.52
MIRU26	0.568	9 (1–9)	0.373	7 (3–9)	0.353 [6(3–9)]	0.560	0.61
Qub4156c	0.343	5 (1–5)	0.297	4 (2–5)	0.395 [5(1–5)]	0.203	0.49
MIRU16	0.381	4 (1–4)	0.265	3 (2–4)	0.068 [3(2–4)]	0.262	0.24
Mtub04	0.435	6 (1–6)	0.265	5 (2–6)	0.306 [4(2–5)]	0.426	0.30
ETRE	0.415	5 (2–6)	0.229	5 (2–6)	0.169 [3(4–6)]	0.668	0.25
ETRA	0.418	3 (2–4)	0.224	2 (3–4)	0.232 [3(2–4)]	0.201	0.03
MIRU10	0.434	5 (1–5)	0.21	4 (1–4)	0.144 [3(1–3)]	0.262	0.20
Mtub39	0.332	6 (2–7)	0.204	6 (2–7)	0.171 [5(1–6)]	0.213	0.06
MIRU23	0.194	5 (2–6)	0.179	5 (2–6)	0.014 [2(5–6)]	0.250	0.06
MIRU40	0.356	5 (1–5)	0.171	5 (1–5)	0.194 [4(1–4)]	0.276	0.15
ETRD	0.259	5 (1–5)	0.152	4 (1–4)	0.120 [4(0–3)]	0.536	0.06
MIRU39	0.374	4 (1–4)	0.127	4 (1–4)	0.119 [3(2–4)]	0.178	0.29
Mtub30	0.304	3 (2–4)	0.065	3 (2–4)	0.068 [4(2–5)]	0.196	0.09
MIRU27	0.15	4 (1–4)	0.056	4 (1–4)		0.084	0.03
ETRB	0.182	3 (1–3)	0.038	2 (1–2)	0.014 [2(1–2)]	0.056	0
ETRC	0.03	3 (2–4)	0.028	3 (2–4)	0.094 [4(2–6)]	0.066	



MTB isolates, 174 (82.5%) were identified as modern Beijing strains based on the presence of IS6110 upstream of the NTF region. In the remaining 37 (17.5%) ancestral Beijing strains, 9 strains had an intact RD181.

The definition of the phylogenetic sublineages of the 260 *M. tuberculosis* isolates from Beijing is listed in Table 3. G1 strains are Beijing family strains and have an RD105 deletion. G1-1 subgroup strains have an intact RD 181. The G1-1 and G1-2 subgroups are ancient Beijing family strains (Table 3).

Discussion

Molecular typing methods are generally useful tools for resolving various issues related to the classical epidemiology of human pathogens, including *M. tuberculosis*. Spoligotyping is definitely a “gold standard” method for detecting a Beijing family strain of *M. tuberculosis* [10]. The Beijing genotype was identified for the first time in strains isolated in the Beijing area of China in 1995, giving rise to the name of the genotype [1].

Beijing family strains having a characteristic spoligotype pattern (loci 1–34 are absent; loci 35–43 are present) have

been identified in many areas. Moreover, in an *M. tuberculosis* molecular epidemiological investigation in China, Beijing family strains were the most prevalent lineage in China (74.08%), based on the SpolDB4.0 spoligotype database and SpotClust results [25]. In this study 211 strains were Beijing family strains, accounting for 81% of all isolates examined.

Interestingly, in the first molecular epidemiology study in Beijing city, 89.4% of the *M. tuberculosis* strains collected from 1992 to 1994 were identified as Beijing family strains [1], and 85.1% of strains collected in Beijing from 2002 to 2005 were also identified as Beijing family strains [24]. In this study of isolates collected in 2009, 81% of the strains were Beijing family strains. Since there is no statistically significant difference between these three percentages, as determined using the χ^2 test ($p > 0.05$) we conclude that the predominance of Beijing family strains has not altered for almost twenty years.

There is some debate over the use of RD181 for classifying isolates. An early study showed that RD181 can be used to divide Beijing isolates into ancestral (RD181 intact) and modern (RD181 deleted) strains [26]. Faksri et al.,

however, suggested that RD181 alone does not provide sufficient discrimination to define ancestral or modern Beijing lineages, but with RD181 being intact or deleted ancestral Beijing family strains can be divided into two subgroups [27]. Results from this study are consistent with this report in that ancestral Beijing family strains could be divided into RD181 intact strains (9 strains) and RD181 deletion strains (28 strains).

During the process of evolution in Beijing family strains, numbers of VNTR repeats can increase or decrease. Changes in the numbers of repeats in VNTRs can differ with locus. It has been shown that expansion and contraction in the number of repeats of VNTRs can occur during the evolutionary process [28]. Many previous studies have shown that VNTR loci can be good markers for phylogenetic estimation [29]. In this study, we found that the number of Mtub21 repeats was different between ancient and modern Beijing family strains, with the number of repeats being much lower in non-Beijing family strains. In agreement with other reports, we conclude that Mtub21 is an evolutionarily informative VNTR locus [30].

Many previous studies have suggested that VNTR loci vary in their ability to discriminate Beijing genotype strains from geographically distant areas [11,22-24] (Table 2). Some highly polymorphic VNTR loci have different powers of discrimination among strains from different regions; for example the discriminatory power of ETRE among strains from Jiangsu [22] and MIRU26 among strains from Shanghai [23] is much greater than among strains from Beijing. We compared the discrimination power of VNTR loci in this study with those in a previous study on Beijing strains published four years ago [24]. Jiao et al. typed 72 Beijing family strains isolated in Beijing city from 2002 to 2005 using 24 VNTR loci. It is interesting that the discrimination power and alleles of some loci were different from our results. The differences are likely due to the different populations in the distinct geographic areas where the

M. tuberculosis strains were isolated or to differences in sampling times.

This study suffers from one main limitation. Our study based on a comparison of strains from Beijing, Shanghai and Jiangsu provinces suggests that VNTR results for *M. tuberculosis* strains differ according to geographic region. However, more data from other provinces is needed to precisely identify the nature of differences between different regions of China.

Conclusions

Beijing family strains are the most prevalent genotypes in Beijing city. The predominance of Beijing family strains has not altered for almost twenty years. Many of the differences in allelic diversity between VNTR locus studies from different areas are likely due to the population differences in the regions from which the *M. tuberculosis* strains were isolated or to different sampling times.

Additional file

Additional file 1: Table S1. Results for the 22 VNTR loci, spoligotyping, LSP and NTF analyses of the 260 strains isolated in Beijing, China in 2009.

Competing interests

The authors declare that they have no competing interests.

Authors' contributions

BL participated in data analysis and drafted the manuscript; PZ and XZ participated in sample collection; BL and QY carried out the molecular genetic studies; HD and KW participated in the design of the study. All authors read and approved the final manuscript.

Acknowledgements

This research was supported by the State Key Laboratory for Infectious Diseases Prevention and Control (2011SKLID208), and the National Key Program of Mega Infectious Diseases (2008ZX100/03-010).

Author details

¹State Key Laboratory for Infectious Diseases Prevention and Control, National Institute for Communicable Disease Control and Prevention & National Tuberculosis Reference Laboratory, Chinese Center for Disease Control and Prevention, Beijing 102206, P. R. China. ²Chaoyang Centre for Disease Control and Prevention, Beijing 100021, P. R. China. ³Hunan Provincial Institute for Tuberculosis Prevention and Control, Changsha 410006, P. R. China. ⁴University of South China, Hengyang 421001, P. R. China.

Received: 21 May 2012 Accepted: 13 December 2012

Published: 23 December 2012

References

- van Soolingen D, Qian L, de Haas PE, Douglas JT, Traore H, Portaels F, Qing HZ, Enkhsaikan D, Nymadawa P, van Embden JD: **Predominance of a single genotype of *Mycobacterium tuberculosis* in countries of east Asia.** *J Clin Microbiol* 1995, **33**(12):3234-3238.
- Brosch R, Gordon SV, Marmiesse M, Brodin P, Buchrieser C, Eiglmeier K, Garnier T, Gutierrez C, Hewinson G, Kremer K, et al: **A new evolutionary scenario for the *Mycobacterium tuberculosis* complex.** *Proc Natl Acad Sci USA* 2002, **99**(6):3684-3689.
- Sola C, Filliol I, Legrand E, Mokrousov I, Rastogi N: ***Mycobacterium tuberculosis* phylogeny reconstruction based on combined numerical analysis with IS1081, IS6110, VNTR, and DR-based spoligotyping**

Table 3 Definition of the phylogenetic sublineages of the 260 *M. tuberculosis* isolates from Beijing.

Sublineage	Spoligotyping		LSP		IS6110 in NTF
			RD105	RD181	
G1	G1-1	Beijing family	Deletion	Intact	Ancient
	G1-2	Beijing family	Deletion	Deletion	Ancient
	G1-3	Beijing family	Deletion	Deletion	Modern
G2		Non-Beijing	Intact	—	—
G3		Non-Beijing	Intact	—	—
G4		Non-Beijing	Intact	—	—

* In RD105 and RD181 columns, '1' means the RD is intact; '0' means the RD is deleted.

- suggests the existence of two new phylogeographical clades. *J Mol Evol* 2001, **53**(6):680–689.
4. Parwati I, van Crevel R, van Soolingen D: Possible underlying mechanisms for successful emergence of the *Mycobacterium tuberculosis* Beijing genotype strains. *Lancet Infect Dis* 2010, **10**(2):103–111.
 5. Kamerbeek J, Schouls L, Kolk A, van Agterveld M, van Soolingen D, Kuijper S, Bunschoten A, Molhuizen H, Shaw R, Goyal M, *et al*: Simultaneous detection and strain differentiation of *Mycobacterium tuberculosis* for diagnosis and epidemiology. *J Clin Microbiol* 1997, **35**(4):907–914.
 6. Kremer K, Glynn JR, Lillebaek T, Niemann S, Kurepina NE, Kreiswirth BN, Bifani PJ, van Soolingen D: Definition of the Beijing/W lineage of *Mycobacterium tuberculosis* on the basis of genetic markers. *J Clin Microbiol* 2004, **42**(9):4040–4049.
 7. van Embden JD, Cave MD, Crawford JT, Dale JW, Eisenach KD, Gicquel B, Hermans P, Martin C, McAdam R, Shinnick TM, *et al*: Strain identification of *Mycobacterium tuberculosis* by DNA fingerprinting: recommendations for a standardized methodology. *J Clin Microbiol* 1993, **31**(2):406–409.
 8. Chan MY, Borgdorff M, Yip CW, de Haas PE, Wong WS, Kam KM, Van Soolingen D: Seventy percent of the *Mycobacterium tuberculosis* isolates in Hong Kong represent the Beijing genotype. *Epidemiol Infect* 2001, **127**(1):169–171.
 9. Kremer K, Van-der-Werf MJ, Au BK, Anh DD, Kam KM, Van-Doorn HR, Borgdorff MW, Van-Soolingen D: Vaccine-induced immunity circumvented by typical *Mycobacterium tuberculosis* Beijing strains. *Emerg Infect Dis* 2009, **15**(2):335–339.
 10. Mokrousov I, Ly HM, Otten T, Lan NN, Vyshnevskiy B, Hoffner S, Narvskaya O: Origin and primary dispersal of the *Mycobacterium tuberculosis* Beijing genotype: clues from human phylogeography. *Genome Res* 2005, **15**(10):1357–1364.
 11. Kremer K, Au BK, Yip PC, Skuce R, Supply P, Kam KM, van Soolingen D: Use of variable-number tandem-repeat typing to differentiate *Mycobacterium tuberculosis* Beijing family isolates from Hong Kong and comparison with IS6110 restriction fragment length polymorphism typing and spoligotyping. *J Clin Microbiol* 2005, **43**(1):314–320.
 12. Supply P, Mazars E, Lesjean S, Vincent V, Gicquel B, Locht C: Variable human minisatellite-like regions in the *Mycobacterium tuberculosis* genome. *Mol Microbiol* 2000, **36**(3):762–771.
 13. Supply P, Allix C, Lesjean S, Cardoso-Oelemann M, Rusch-Gerdes S, Willery E, Savine E, de Haas P, van Deutekom H, Roring S, *et al*: Proposal for standardization of optimized mycobacterial interspersed repetitive unit-variable-number tandem repeat typing of *Mycobacterium tuberculosis*. *J Clin Microbiol* 2006, **44**(12):4498–4510.
 14. Flores L, Van T, Narayanan S, DeRiemer K, Kato-Maeda M, Gagneux S: Large sequence polymorphisms classify *Mycobacterium tuberculosis* strains with ancestral spoligotyping patterns. *J Clin Microbiol* 2007, **45**(10):3393–3395.
 15. Tsolaki AG, Gagneux S, Pym AS, Goguet de la Salmoniere YO, Kreiswirth BN, Van Soolingen D, Small PM: Genomic deletions classify the Beijing/W strains as a distinct genetic lineage of *Mycobacterium tuberculosis*. *J Clin Microbiol* 2005, **43**(7):3185–3191.
 16. Hunter PR: Reproducibility and indices of discriminatory power of microbial typing methods. *J Clin Microbiol* 1990, **28**(9):1903–1905.
 17. Gaston MA, Hunter PR: Efficient selection of tests for bacteriological typing schemes. *J Clin Pathol* 1989, **42**(7):763–766.
 18. Hunter PR, Gaston MA: Numerical index of the discriminatory ability of typing systems: an application of Simpson's index of diversity. *J Clin Microbiol* 1988, **26**(11):2465–2466.
 19. Wada T, Iwamoto T, Maeda S: Genetic diversity of the *Mycobacterium tuberculosis* Beijing family in East Asia revealed through refined population structure analysis. *FEMS Microbiol Lett* 2009, **291**(1):35–43.
 20. Pliikaytis BB, Marden JL, Crawford JT, Woodley CL, Butler WR, Shinnick TM: Multiplex PCR assay specific for the multidrug-resistant strain W of *Mycobacterium tuberculosis*. *J Clin Microbiol* 1994, **32**(6):1542–1546.
 21. Brudey K, Driscoll JR, Rigouts L, Prodinger WM, Gori A, Al-Hajj SA, Allix C, Aristimuno L, Arora J, Baumanis V, *et al*: *Mycobacterium tuberculosis* complex genetic diversity: mining the fourth international spoligotyping database (SpolDB4) for classification, population genetics and epidemiology. *BMC Microbiol* 2006, **6**:23.
 22. Zhang L, Chen J, Shen X, Gui X, Mei J, Deriemer K, Gao Q: Highly polymorphic variable-number tandem repeats loci for differentiating Beijing genotype strains of *Mycobacterium tuberculosis* in Shanghai, China. *FEMS Microbiol Lett* 2008, **282**(1):22–31.
 23. Liu Q, Yang D, Xu W, Wang J, Lv B, Shao Y, Song H, Li G, Dong H, Wan K, *et al*: Molecular typing of *Mycobacterium tuberculosis* isolates circulating in Jiangsu province, China. *BMC Infect Dis* 2011, **11**:288.
 24. Jiao WW, Mokrousov I, Sun GZ, Guo YJ, Vyazovaya A, Narvskaya O, Shen AD: Evaluation of new variable-number tandem-repeat systems for typing *Mycobacterium tuberculosis* with Beijing genotype isolates from Beijing, China. *J Clin Microbiol* 2008, **46**(3):1045–1049.
 25. Dong H, Liu Z, Lv B, Zhang Y, Liu J, Zhao X, Wan K: Spoligotypes of *Mycobacterium tuberculosis* from different Provinces of China. *J Clin Microbiol* 2010, **48**(11):4102–4106.
 26. Dou HY, Tseng FC, Lin CW, Chang JR, Sun JR, Tsai WS, Lee SY, Su IJ, Lu JJ: Molecular epidemiology and evolutionary genetics of *Mycobacterium tuberculosis* in Taipei. *BMC Infect Dis* 2008, **8**:170.
 27. Faksri K, Drobniowski F, Nikolayevskiy V, Brown T, Prammananan T, Palittapongpim P, Prayoonwiwat N, Chaiprasert A: Genetic diversity of the *Mycobacterium tuberculosis* Beijing family based on IS6110, SNP, LSP and VNTR profiles from Thailand. *Infect Genet Evol* 2011, **11**(5):1142–1149.
 28. Warren RM, Victor TC, Streicher EM, Richardson M, van der Spuy GD, Johnson R, Chihota VN, Locht C, Supply P, van Helden PD: Clonal expansion of a globally disseminated lineage of *Mycobacterium tuberculosis* with low IS6110 copy numbers. *J Clin Microbiol* 2004, **42**(12):5774–5782.
 29. Wada T, Iwamoto T: Allelic diversity of variable number of tandem repeats provides phylogenetic clues regarding the *Mycobacterium tuberculosis* Beijing family. *Infect Genet Evol* 2009, **9**(5):921–926.
 30. Millet J, Miyagi-Shiohira C, Yamane N, Mokrousov I, Rastogi N: High-resolution MIRU-VNTRs typing reveals the unique nature of *Mycobacterium tuberculosis* Beijing genotype in Okinawa, Japan. *Infect Genet Evol* 2012, **12**(4):637–641.

doi:10.1186/1471-2334-12-372

Cite this article as: Lu *et al.*: Genetic diversity of *Mycobacterium tuberculosis* isolates from Beijing, China assessed by Spoligotyping, LSPs and VNTR profiles. *BMC Infectious Diseases* 2012 **12**:372.

Submit your next manuscript to BioMed Central and take full advantage of:

- Convenient online submission
- Thorough peer review
- No space constraints or color figure charges
- Immediate publication on acceptance
- Inclusion in PubMed, CAS, Scopus and Google Scholar
- Research which is freely available for redistribution

Submit your manuscript at
www.biomedcentral.com/submit

