

## POSTER PRESENTATION

## Open Access

# Assessment of changes in cardiac volumes following MitraClip™ implantation using cardiac magnetic resonance imaging

Ulf K Radunski<sup>1\*</sup>, Maximilian Lange<sup>1</sup>, Achim Barmeyer<sup>1</sup>, Olaf Franzen<sup>1</sup>, Volker Rudolph<sup>1</sup>, Gunnar Lund<sup>2</sup>, Gerhard Adam<sup>2</sup>, Herrmann Reichenspurner<sup>1</sup>, Stefan Blankenberg<sup>1</sup>, Stephan Baldus<sup>1</sup>, Kai Muellerleile<sup>1</sup>

From 15th Annual SCMR Scientific Sessions  
Orlando, FL, USA. 2-5 February 2012

## Summary

This study aimed at assessing left ventricular (LV), left atrial (LA) and right ventricular (RV) volumes in patients before and after MitraClip™ implantation by cardiac magnetic resonance imaging (CMR).

## Background

The MitraClip™ is a novel device for percutaneous mitral valve repair. Recent studies demonstrated a reduction of LV volumes after MitraClip™ implantation using echocardiography. CMR is currently the reference method to assess cardiac volumes but has not been used to assess LV remodeling after MitraClip™ implantation so far.

## Methods

Twelve patients with functional (n=7) or degenerative (n=5) mitral valve regurgitation grade 3 to 4 underwent CMR at baseline (BL) before and at 6 month follow-up (FU) after successful MitraClip™ implantation. CMR protocol consisted of short- and long-axis slices using a steady-state-free-precession cine sequence for the assessment of LV, LA and RV volumes.

## Results

Minor device-related artifacts were observed, enabling reliable delineation of endocardial borders in all patients at FU. Figure 1) demonstrates typical device-related artifacts 6 month after implantation (A) in comparison with a corresponding pre-implantation image (B). Mean intra- and inter-observer biases were 0.9±2.0 and 1.6

±2.9 % for LV end-diastolic (LVEDV), 0.3±4.7 and 1.8 ±6.4 % for LV end systolic (LVESV), 0.1±2.9 and 2.2±3.7 % for RVEDV, 1.7±7.8 and 3.5±8.8 % for RVESV as well as 0.3±7.6 and 13.7±14.0 % for LA (LAV) volume indices at FU. No significant differences in intra- or inter-observer biases were observed between BL and FU. LVEDV (127 (96-150) vs. 112 (86-150) ml/m<sup>2</sup>; p=0.03) as well as LVESV (82 (54-91) vs. 69 (48-99) ml/m<sup>2</sup>; p=0.03) indices significantly decreased from BL to FU. No significant difference was found for RVEDV (94 (75-103) vs. 99 (77-123) ml/m<sup>2</sup>; p=0.91), RVESV (48 (42-80) vs. 51 (40-81) ml/m<sup>2</sup>; p=0.48) and LAV (87 (55-124) vs. 92 (48-137) ml/m<sup>2</sup>; p=0.20) indices between BL and FU.

## Conclusions

CMR enables reproducible measurements of cardiac volumes in patients with implanted MitraClip™ devices. Significantly decreased LV but unchanged LA and RV volumes were found at 6 month after successful MitraClip™ implantation.

## Funding

No external funding.

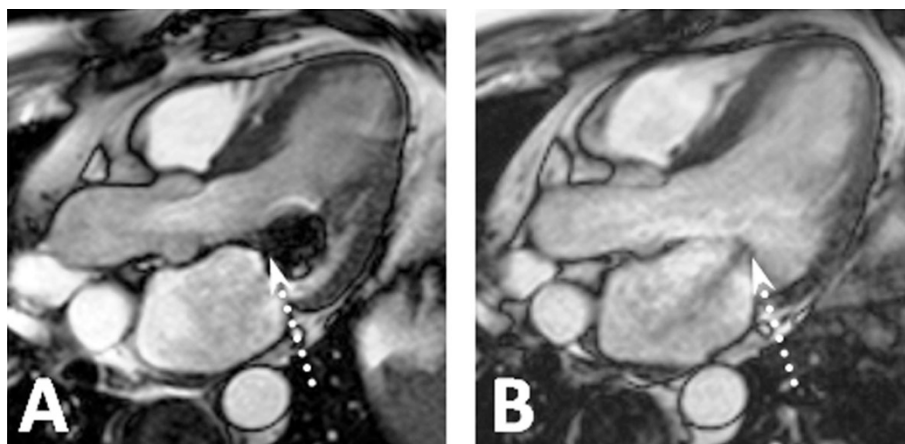
## Author details

<sup>1</sup>Center for Cardiology and Cardiovascular Surgery, University Heart Center Hamburg, Hamburg, Germany. <sup>2</sup>Department of Diagnostic and Interventional Radiology, University Medical Center Hamburg-Eppendorf, Hamburg, Germany.

Published: 1 February 2012

<sup>1</sup>Center for Cardiology and Cardiovascular Surgery, University Heart Center Hamburg, Hamburg, Germany

Full list of author information is available at the end of the article



**Figure 1**

doi:10.1186/1532-429X-14-S1-P101

**Cite this article as:** Radunski *et al.*: Assessment of changes in cardiac volumes following MitraClip™ implantation using cardiac magnetic resonance imaging. *Journal of Cardiovascular Magnetic Resonance* 2012 **14** (Suppl 1):P101.

**Submit your next manuscript to BioMed Central  
and take full advantage of:**

- Convenient online submission
- Thorough peer review
- No space constraints or color figure charges
- Immediate publication on acceptance
- Inclusion in PubMed, CAS, Scopus and Google Scholar
- Research which is freely available for redistribution

Submit your manuscript at  
[www.biomedcentral.com/submit](http://www.biomedcentral.com/submit)

 **BioMed Central**