



PUBLISHED FOR SISSA BY SPRINGER

RECEIVED: February 6, 2012

ACCEPTED: March 29, 2012

PUBLISHED: April 20, 2012

Metastable supertubes and non-extremal black hole microstates

Iosif Bena, Andrea Puhm and Bert Vercoocke

*Institut de Physique Théorique,
CEA Saclay, 91191 Gif sur Yvette, France*

E-mail: iosif.bena@cea.fr, andrea.puhm@cea.fr, bert.vercoocke@cea.fr

ABSTRACT: We study the dynamics of supertubes in smooth bubbling geometries with three charges and three dipole charges that can describe black holes, black rings and their microstates. We find the supertube Hamiltonian in these backgrounds and show that there exist metastable supertube configurations, that can decay into supersymmetric and non-supersymmetric ones via brane-flux annihilation. We also find stable non-supersymmetric configurations. Both the metastable and the stable non-supersymmetric configuration are expected to describe microstate geometries for non-extremal black holes, and we discuss the implication of their existence for the fuzzball proposal.

KEYWORDS: Black Holes in String Theory, D-branes, Black Holes

ARXIV EPRINT: [1109.5180](https://arxiv.org/abs/1109.5180)

Contents

1	Introduction	1
2	The supertube hamiltonian	4
2.1	Supertubes in flat space	4
2.2	Tubes in three-charge backgrounds	5
2.3	Minima of the supertube hamiltonian	7
3	Metastable supertubes in a two-center solution	9
3.1	Details of the background	9
3.2	Plots of the potential	10
3.2.1	One minimum	10
3.2.2	Two minima	11
4	The decay of metastable supertubes	12
5	Discussion and future directions	15
A	Three-charge solutions	17
A.1	Three charge solutions in M-theory and type IIA duality frames	17
A.1.1	M-theory solution	17
A.1.2	Two reductions to type-IIA, and their charge interpretatins	19
A.2	Physical conditions	19
B	Hamiltonian for a two-charge tube in a three-charge background	21
B.1	Reduction of the background along a torus direction	21
B.2	Gibbons-Hawking hamiltonian	22

1 Introduction

Metastable vacua appear to be a putative feature of supersymmetric gauge theories [1], and the construction of such vacua in string theory has been the subject of much study. The most direct way to obtain such vacua in supergravity is to put antibranes in a background that has brane charge dissolved in flux.

This has been first done by Kachru, Pearson and Verlinde [2], who argued that probe anti-D3 branes in a smooth Klebanov-Strassler solution [3] are metastable, and can decay by annihilating against the positive D3 brane charge dissolved in flux via a process termed “brane-flux annihilation.” Similarly, Klebanov and Pufu considered anti-M2 branes in a smooth solution with M2 brane charge dissolved in fluxes [4], and found that in the probe approximation these also give rise to metastable vacua [5]. While there is at this point

some uncertainty about the fate of these antibrane constructions when full backreaction is taken into account [6–10], it is clear that placing probe antibranes in flux backgrounds is the most obvious starting point in hunting for metastable vacua.

Our purpose in this paper is to apply this procedure to supersymmetric black hole microstate geometries and to argue that in the probe approximation antibranes give rise to metastable solutions that should be interpreted as microstates of non-extremal black holes.

As is well-known (see [11] for a review) there exist huge families of supersymmetric solutions that have the same charge, mass and angular-momentum as a black hole with a macroscopically-large horizon area, and have no horizon or singularity. The singularity of the extremal BPS black hole (that can be thought of as coming from the singular brane sources) is resolved by a geometric transition that yields a geometry with many “bubbles” threaded by fluxes. The charge of these “black hole microstate” solutions is entirely dissolved in these fluxes.

The physics of these solutions strongly supports the fact that the timelike singularity of extremal black holes is resolved by low-mass modes that correct the geometry on scales comparable to the horizon scale, and completely excise the region between the singularity and the horizon. This certainly disagrees with the standard textbook picture of extremal Reissner-Nordström black holes, but on the other hand it is exactly identical to the way string theory resolves other timelike singularities.¹ Moreover, there is recent evidence from numerical relativity studies of extremal and near-extremal black holes that the region inside the horizon is unstable, and the instability yields a final configuration with essentially no spacetime inside the horizon (see [17] for an overview, and [18–20] for earlier work).

Hence, there appears to be a growing consensus that extremal black hole singularities are not resolved at Planck scale, but at horizon scale. While this fits very well with Mathur’s conjecture,² it leaves unanswered the question of what happens for non-extremal black holes. Indeed, given the resolution mechanism of the extremal black hole singularity, it is quite natural to expect that the timelike singularity of non-extremal black holes will be resolved on the scale of the inner horizon, and thus that there will be no more spacetime in the region from the singularity to the inner horizon; this also agrees with insights coming from numerical relativity [19], and with ancient analytical work about the instability of inner horizons [18, 20, 26].

Nevertheless, the fuzzball proposal, and in general the requirement that the information paradox be vindicated [27] imply something much stronger: the singularity of non-extremal black holes should be resolved all the way to the outer horizon, in the past of the singularity. To understand whether this indeed happens, one must understand what happens to the extremal black hole microstates when one tries to make them near-extremal. If they all collapse behind a horizon, then most likely the singularity resolution scale is that of the inner horizon, and these microstates do not help too much in solving the information paradox.³

¹Many of the timelike singularities that we know how to resolve in string theory: LMM, Klebanov-Strassler, the enhançon, the D1-D5 system, Polchinski-Strassler and its generalizations, are resolved by low-mass modes that modify the physics at a large distance away from the singularity [3, 12–16].

²Also known as the fuzzball proposal, see [11, 21–25] for reviews.

³Though there might exist microstate geometries that differ from the black hole solution all the way to the horizon, but still have a horizon [28].

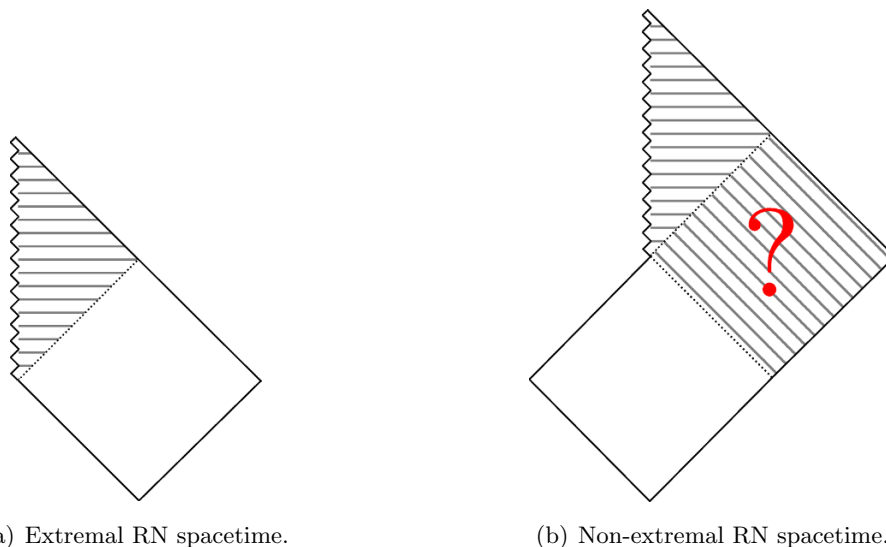


Figure 1. Penrose diagrams for the extremal (left) and non-extremal (right) Reissner-Nordström black hole. There is a growing body of work supporting the idea that the extremal black hole singularity is resolved at horizon scale. For non-extremal black holes it is unclear whether the singularity resolution extends to the inner horizon, or all the way to the outer horizon, as in Mathur’s proposal.

On the other hand, if these microstates survive the near-extremal deformation and do not collapse behind a horizon, this indicates that the singularity is resolved all the way to the outer horizon, just like in the fuzzball proposal.

Note that settling the issue of the near-extremal fate of the microstate geometries is suggestive for arguing that the fuzzball proposal applies to all non-extremal black holes: the Penrose diagram of a large Schwarzschild black hole to which one adds one electron is the same as the one of the near-extremal Reissner-Nordström black hole, and if the singularity-resolution scale of the latter is the outer horizon, the causal structure suggests that it could be the same for the former.

At this point only two classes of non-extremal microstate solutions are known: the JMaRT [29, 30] and the running-Bolt [31, 32] solutions, and all the arguments so far that the fuzzball proposal applies to non-extremal black holes have been based on the existence and physics of these solutions [33–35]. Nevertheless, given that these solutions are very special, and given the technical difficulty involved in finding new ones, it is in rather difficult to take these arguments too far away.

Our purpose in this paper is to give a systematic method to construct and analyze near-extremal non-supersymmetric microstate solutions. We propose that starting from a generic extremal supersymmetric microstate solution one can build non-extremal microstates by adding certain branes with non-compatible supersymmetries. In particular we focus on two-charge supertubes (which correspond to fluxed D4 branes upon reduction to 4 dimensions), and find that a probe supertube can have both supersymmetric, as well as non-supersymmetric metastable minima. We explain the mechanism by which the su-

pertube can annihilate against some of the charge dissolved in fluxes, and decay into a supersymmetric solution.

To prove the existence of metastable supertubes⁴ and to understand their decay mechanism, it is enough to focus on supertubes in BPS microstate geometries built upon a Gibbons-Hawking base with two centers, and this is what we do in this paper. From the physics we find, it is quite obvious that metastable supertubes will exist in generic multi-center BPS three-charge geometries, and most likely also in non-BPS extremal multi-center solutions; we leave such generalizations for future work.

In section 2 we compute the supertube Hamiltonian in an arbitrary three-charge solution with a Gibbons-Hawking base, and explore its minima analytically. In section 3 we focus on a particular two-center background, and find that, depending on the supertube charges, it can have both supersymmetric and non-supersymmetric minima, as well as metastable minima. In section 4 we describe how these metastable minima decay to the supersymmetric ones via brane-flux annihilation, and in section 5 we discuss our results and future directions.

Note: when this article was in the final stages of preparation, the preprint [36] appeared, which investigates the physics of probe metastable branes near single non-extremal black holes. The explicit system studied there is different from ours: we explore metastable configurations that probe *multi-center* supersymmetric solutions and decay into supersymmetric or non-supersymmetric solutions via brane-flux annihilation. In [36] the metastable branes probe *single-center* non-extremal black holes, and decay by falling behind the horizon. However, the physical conclusions of the two investigations point in the same direction: in the probe approximation there exist very large numbers of non-supersymmetric metastable configurations, that can be long-lived, and that play an important role in the physics of non-extremal black holes in string theory.

2 The supertube hamiltonian

The purpose of this section is to review the physics of supertubes in flat space, and to see how this extends when supertubes are placed in three-charge solutions constructed from a Gibbons-Hawking base, which descend in four dimensions to the multi-center solutions of [37, 38].

2.1 Supertubes in flat space

A supertube is a brane configuration with two charges, a dipole charge, and angular momentum, that preserves 8 supersymmetries. In its original realization [39–41], the charges correspond to D0 branes and F1 strings dissolved into a tubular D2 brane. The tube has a non-trivial angular momentum in the space transverse to the strings which supports it

⁴We use the word supertube to refer to minima of the supertube Hamiltonian (or from a four-dimensional perspective to fluxed D4 branes), even when these configurations are not supersymmetric. This is because supertubes are locally-supersymmetric objects, and supersymmetry is broken because they are placed in a background of the wrong orientation.

from collapsing:

$$|J| = \left| \frac{Q_{D0}Q_{F1}}{Q_{D2}} \right|. \tag{2.1}$$

To establish the existence of the supertube, one can examine the Born-Infeld action of the D2 brane with dissolved F1 and D0 charges, and find that the Hamiltonian of a tube of radius R is

$$\mathcal{H} = \frac{Q_{D2}}{R} \sqrt{Q_{D0}^2/Q_{D2}^2 + R^2} \sqrt{Q_{F1}^2/Q_{D2}^2 + R^2}. \tag{2.2}$$

The Hamiltonian is minimized at

$$R_{\min} = \frac{\sqrt{|Q_{D0}Q_{F1}|}}{|Q_{D2}|} \tag{2.3}$$

and is equal to the sum of the F1 and D0 charges. Thus, the minimum describes a super-symmetric tube.

2.2 Tubes in three-charge backgrounds

We now want to examine the dynamics of a supertube placed in a supersymmetric background geometry with three charges and three dipole charges, of the type that describe black holes, black rings and their microstate geometries. The metric in the M-theory duality frame in which the three charges correspond to M2 branes wrapping orthogonal T^2 's inside T^6 is [42, 43]:

$$ds_{11}^2 = -(Z_1Z_2Z_3)^{-2/3}(dt + k)^2 + (Z_1Z_2Z_3)^{1/3}ds_4^2 + (Z_1Z_2Z_3)^{1/3} \sum_I \frac{ds_I^2}{Z_I} \tag{2.4}$$

where ds_I^2 are unit metrics on the three othogonal T^2 's and ds_4^2 is the metric of the hyper-Kähler base space. When the latter metric is Gibbons-Hawking (GH) or Taub-NUT:

$$ds_4^2 = V^{-1}(d\psi + A)^2 + Vds_3^2 \quad \text{with} \quad dA = \star_3dV, \tag{2.5}$$

the solution is completely determined by specifying 8 harmonic functions V, K^I, L_I, M in the GH base [44, 45]. In terms of these, the warp factors and rotation vector are given by

$$Z_I = L_I + \frac{1}{2}C_{IJK}V^{-1}K^JK^K \quad \text{with} \quad C_{IJK} = |\epsilon_{IJK}|, \tag{2.6}$$

$$k = \mu(dt + \omega) + A \quad \text{with} \quad \mu = \frac{1}{6}C_{IJK}V^{-2}K^IK^JK^K + \frac{1}{2}L_IK^I + M, \tag{2.7}$$

where ds_3^2 is the flat metric on \mathbb{R}^3 . The full details of the background geometry, including the background four-form flux, are given in appendix A. Note that the inverse of the warp factors Z_I are also the electric potentials for the four-form and hence they determine the M2 charges at each background center. The two charges Q_1 and Q_2 of the supertube are parallel to those of the background and correspond to M2 branes along the first and second T^2 . The dipole charge, d_3 , corresponds to an M5 brane extended along those two tori wrapping the fiber of the Gibbons-Hawking space. If the tube is supersymmetric,

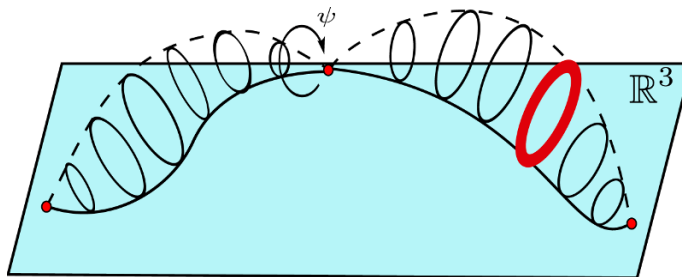


Figure 2. A smooth three-charge bubbling geometry with a supertube (red) placed on one of the cycles along ψ .

then the fully-backreacted solution is again in the class (2.4); the warp factors Z_1 and Z_2 will have a singularity at the location of the tube, and the Born-Infeld description of the supertube captures all the aspects of the backreacted solution [46].

However, since we are trying to study *non-supersymmetric* supertubes, for which no fully-backreacted description has been constructed so far, we will work in a probe approximation, ignoring the backreaction of the supertube. This is best done in a duality frame where the dynamics of the supertube can be described by a Born-Infeld action, and such a frame is obtained for example by reducing the 11-dimensional system along a torus direction.

We find that the Hamiltonian of a two-charge supertube in a multi-center three-charge background with Gibbons-Hawking base is:⁵

$$\begin{aligned} \mathcal{H} = & \frac{\sqrt{Z_1 Z_2 Z_3 V^3}}{d_3(Z_1 Z_2 Z_3 V - \mu^2 V^2)} \sqrt{\tilde{Q}_1^2 + d_3^2 \frac{Z_1 Z_2 Z_3 V - \mu^2 V^2}{Z_2^2 V^2}} \sqrt{\tilde{Q}_2^2 + d_3^2 \frac{Z_1 Z_2 Z_3 V - \mu^2 V^2}{Z_1^2 V^2}} \\ & + \frac{\mu V^2}{d_3(Z_1 Z_2 Z_3 V - \mu^2 V^2)} \tilde{Q}_1 \tilde{Q}_2 - \frac{1}{Z_1} \tilde{Q}_1 - \frac{1}{Z_2} \tilde{Q}_2 - \frac{d_3 \mu}{Z_1 Z_2} + Q_1 + Q_2, \end{aligned} \tag{2.8}$$

where we have introduced

$$\tilde{Q}_1 \equiv Q_1 + d_3(K^2/V - \mu/Z_2), \quad \tilde{Q}_2 \equiv Q_2 + d_3(K^1/V - \mu/Z_1) \tag{2.9}$$

and the harmonic functions K^1 and K^2 encode two of the three dipole moments of the background. Although the calculation yielding this result treats the two charges of the supertube differently, the final Hamiltonian is symmetric under interchange of indices ($1 \leftrightarrow 2$), which is a non-trivial check. In flat space, the Hamiltonian (2.8) reduces to (2.2): the first term becomes the flat-space Hamiltonian and the terms in the second line vanish.

The combination $Z_1 Z_2 Z_3 V - \mu^2 V^2$ gives the square of the radius of the GH fiber ψ and hence the square of the radius of the tube. In a regular background, free of closed timelike curves (CTC's), this combination is always positive, and hence the Hamiltonian is well-defined throughout the space. Furthermore, one can show that this Hamiltonian is always larger than or equal to the sum of the supertube charges Q_1 and Q_2 ; for supersymmetric minima the equality comes about after a few non-trivial cancelations. The

⁵See appendix B for the derivation.

Hamiltonian (2.8) describes tubes in the most general three-charge background. We expect this Hamiltonian to have both supersymmetric and non-supersymmetric minima.

An important difference between the flat space (2.2) and the GH supertube Hamiltonian (2.8) is that the charges appearing in the latter are shifted from the actual brane charges by a term proportional to the background magnetic fluxes.⁶

2.3 Minima of the supertube hamiltonian

Supersymmetric minima. The supersymmetric minima of the Hamiltonian have

$$V_{BPS} = Q_1 + Q_2. \tag{2.10}$$

This value is obtained when the supertube radius is related to the supertube charges by

$$d_3^2 \frac{Z_3}{V} = \left(Q_1 + d_3 \frac{K^2}{V} \right) \left(Q_2 + d_3 \frac{K^1}{V} \right) \tag{2.11}$$

and provided that

$$\left(Q_1 + d_3 \frac{K^2}{V} \right) \left(Q_2 + d_3 \frac{K^1}{V} \right) \geq 0. \tag{2.12}$$

For this radius the Hamiltonian (2.8) reduces to

$$\mathcal{H} = Q_1 + Q_2 + \frac{Z_1 Z_2 Z_3 V}{Z_1 Z_2 Z_3 V - \mu^2 V^2} \left[\left| \frac{\tilde{Q}_1}{Z_1} + \frac{\tilde{Q}_2}{Z_2} \right| - \left(\frac{\tilde{Q}_1}{Z_1} + \frac{\tilde{Q}_2}{Z_2} \right) \right] \tag{2.13}$$

which saturates the BPS bound only if

$$\frac{\tilde{Q}_1}{Z_1} + \frac{\tilde{Q}_2}{Z_2} \geq 0. \tag{2.14}$$

When the conditions (2.12) and (2.14) are not met, the Hamiltonian has no supersymmetric minimum. The first condition (2.12) is needed for the absence of CTC's: $Z_I V \geq 0$ (see appendix A, eq. (A.10)) implies that both sides of (2.11) have to be positive, which is equivalent to (2.12). Similarly, if one is to construct the backreaction of the supertube, the warp factors near the supertube center (which we can take at $r = 0$) would diverge [46] as $(Q_{1,2} + d_3 K^{2,1}/V)/r$. These divergences are controlled by the effective, or enhanced M2 charges

$$Q_1^{\text{eff}} \equiv Q_1 + d_3 \frac{K^2}{V} \quad \text{and} \quad Q_2^{\text{eff}} \equiv Q_2 + d_3 \frac{K^1}{V}. \tag{2.15}$$

If these charges do not have the same sign the solution has CTC's.

⁶This shift is the crucial ingredient in the supertube entropy enhancement mechanism [47].

Non-supersymmetric minima. Given the complicated nature of the Hamiltonian (2.8), and given that we are trying to construct metastable black hole microstates, we focus from now on on supertubes in smooth bubbling multi-center solutions. The most generic such solution has a multi-center Taub-NUT or GH four-dimensional base space, with three non-trivial fluxes on the two-cycles stretching between every pair of Taub-NUT or GH centers [48–50].

In order to study the existence of non-supersymmetric minima, we first expand the Hamiltonian near one of the smooth centers:

$$\mathcal{H}|_{r_i \rightarrow 0} = \left| \left(Q_1 + d_3 \frac{K^2}{V} \right) \left(Q_2 + d_3 \frac{K^1}{V} \right) \right| \sqrt{\frac{v_i}{Z_1 Z_2 Z_3}} (r_i)^{-1/2} + \mathcal{O}[(r_i)^0], \quad (2.16)$$

where r_i is the distance to the i^{th} center and v_i is the coefficient of the $1/r_i$ pole in V .

When both $(Q_1 + d_3 K^2/V)|_{r_i=0}$ and $(Q_2 + d_3 K^1/V)|_{r_i=0}$ are non-zero this Hamiltonian diverges near the centers⁷ and hence there is at least one minimum between the centers. If (2.12) is satisfied, the minimum is supersymmetric. To find a non-supersymmetric minimum one simply has to find a set of supertube charges such that at the minimum $(Q_1 + d_3 K^2/V)(Q_2 + d_3 K^1/V) < 0$.

When one of the effective charges vanishes, say $(Q_1 + d_3 K^2/V)|_{r_i \rightarrow 0} = 0$, then the supertube radius is zero. The divergent term of the Hamiltonian vanishes, and the leading term is:

$$\mathcal{H}|_{r_i \rightarrow 0} = Q_1 + Q_2 + \left| \frac{Q_2 + d_3 K^1/V}{Z_2} \right| - \frac{Q_2 + d_3 K^1/V}{Z_2}. \quad (2.17)$$

One might naively think that a supertube of zero radius is nothing but a collection of branes, and may wonder why the dipole charge d_3 still appears in the Hamiltonian. The answer has to do with the existence of Dirac strings for the gauge field $A^{(1)}$ (given by eqs. (A.2) and (A.6) in appendix A). Since the solution has non-trivial fluxes, to completely describe the physics one must use multiple patches. The values of the gauge field $A^{(1)}$ differ from patch to patch, and in a generic patch there will be Dirac strings at generic centers. In particular, as we will discuss in detail in section 4, when K^1/V is non-zero at the center, the zero-sized supertube described by (2.17) wraps a Dirac string, and is not just a collection of parallel branes. When removing the Dirac string, the supertube brane charges shift, and become equal to the effective charges.

It is then the orientation of these effective charges with respect to the background that determines whether supersymmetry is broken or not. In our example, when the effective charge of the supertube, $Q_2 + d_3 K^1/V$, has the same orientation as the charge of the background (proportional to Z_2), the Hamiltonian is equal to the sum of the charges, and the configuration is supersymmetric. When this effective charge has the opposite orientation, the Hamiltonian is strictly larger than V_{BPS} , and the configuration is a non-supersymmetric minimum or maximum (depending on the sign of the next-to-leading order term).

Given that supersymmetric tubes have a critical worldvolume electric field, one may attempt to analytically obtain a non-supersymmetric minimum using a supertube with a

⁷From a four-dimensional perspective, these supertubes are fluxed D4 branes with two non-zero fluxes, and hence a non-zero D0 charge; these are repelled by the fluxed D6 centers.

critical electric field oriented opposite to the background ($(Q_2 + d_3 \frac{K^1}{V})/Z_2 r_i < 0$). When one of the effective charges is zero, this naive guess yields a non-supersymmetric minimum with energy

$$V_{non-BPS} = Q_1 + Q_2 - 2 \frac{Q_2 + d_3 K^1/V}{Z_1}. \quad (2.18)$$

which agrees with (2.17)! Thus the naive guess gives the correct energy of the zero-radius non-supersymmetric configuration. The naive guess also gives a radius relation:

$$-\frac{Z_3}{V} = \left(Q_1 + d_3 \frac{K^2}{V} - 2d_3 \frac{\mu}{Z_2} \right) \left(Q_2 + d_3 \frac{K^1}{V} \right), \quad (2.19)$$

which is satisfied trivially for degenerate supertubes. Unfortunately, non-degenerate supertubes do not have a critical electric field, and the naive minima obtained from (2.19) do not agree with those of the Hamiltonian. It would be interesting to get a deeper understanding of why this naive guess describes correctly the metastable vacua with degenerate supertubes but not the other ones.

To summarize this section, one can use the Hamiltonian (2.8) to infer analytically the existence and properties of degenerate vacua, as well as the existence of non-degenerate vacua. However, we could not find any easy analytic way to describe non-degenerate non-supersymmetric vacua. Thus, we will now focus on a simple two-center bubbling solution, and analyze the possible minima numerically.

3 Metastable supertubes in a two-center solution

In this section, we evaluate the Hamiltonian in a specific two-center solution. Depending on the values of their charges Q_1, Q_2 , the supertubes can have a rich structure of minima and interesting decay patterns. We scan for the candidate charges yielding metastable vacua by first plotting the supertube Hamiltonian on the axis between the centers. We find examples with either one supersymmetric, or one non-supersymmetric, stable minimum. There can also be two minima for a given set of supertube charges Q_1, Q_2 . Either they are both supersymmetric or one is stable (supersymmetric or non-supersymmetric) and the other is metastable. We expect this rich minima structure to carry over to other smooth background geometries with *multi*-center Taub-NUT base spaces. When the candidate configuration is metastable, we also plot the Hamiltonian away from the axes to insure that the supertube is not unstable to rolling away from the symmetry axis.

3.1 Details of the background

The Hamiltonian depends on the spacetime coordinates through the harmonic functions

$$\begin{aligned} V &= v_0 + \frac{v_1}{|\vec{r} - \vec{r}_1|} + \frac{v_2}{|\vec{r} - \vec{r}_2|}, & M &= m_0 + \frac{m_1}{|\vec{r} - \vec{r}_1|} + \frac{m_2}{|\vec{r} - \vec{r}_2|}, \\ K^I &= k_0^I + \frac{k_1^I}{|\vec{r} - \vec{r}_1|} + \frac{k_2^I}{|\vec{r} - \vec{r}_2|}, & L_I &= \ell_{I,0} + \frac{\ell_{I,1}}{|\vec{r} - \vec{r}_1|} + \frac{\ell_{I,2}}{|\vec{r} - \vec{r}_2|}. \end{aligned} \quad (3.1)$$

For an interpretation of the charges see table 1 in appendix A. We choose a cylindrical coordinate system (ρ, z, θ) in three dimensions, where z runs along the axis through the

center and ρ, θ are polar coordinates in the orthogonal plane. Since we have cylindrical symmetry, the solution only depends on the coordinates z and ρ .

We consider a two-center background where the inter-center distance is $r_{12} = |\vec{r}_1 - \vec{r}_2| = 120$ and we fix the two centers on the symmetry axis as $z_1 = -60, z_2 = 60$. We choose $K^I = K$ all equal and the following charges and asymptotics in the harmonic functions V, K :

$$\begin{aligned} v_0 = 2, & & v_1 = 10, & & v_2 = -2, \\ k_0 = -3, & & k_1 = 0, & & k_2 = 14. \end{aligned} \tag{3.2}$$

Because at spatial infinity $V \rightarrow v_0 \neq 0$, the GH space is in fact a two-center Taub-NUT space asymptotic to $\mathbb{R}^3 \times S^1$. Furthermore, K has a non-vanishing constant asymptotic value, and hence the solution has non-trivial Wilson lines along the Gibbons-Hawking fiber (which descend to axions upon reduction to four dimensions). This choice of charges and asymptotic values is a representative choice that has the generic features of a smooth geometry with a two-center Taub-NUT base space. Furthermore, with the choice $k_1 = 0$, there are no Dirac strings at center “1”.

Note that the harmonic functions M and L_I are completely determined through the regularity conditions on Z_I and μ and the bubble equations (eqs. (A.11) and (A.12) in appendix A). Finally, without loss of generality we consider a tube with dipole charge $d_3 = 1$.

3.2 Plots of the potential

We plot the Hamiltonian, shifted to $\mathcal{H} \rightarrow \mathcal{H} - (Q_1 + Q_2)$ (such that $\mathcal{H} = 0$ for supersymmetric tubes), in terms of the coordinate z at $\rho = 0$ (i.e. on the symmetry axis). Varying the supertube charges, a rich structure of different minima arises:

3.2.1 One minimum

We first choose charges Q_1, Q_2 for which there is one minimum. When $\mathcal{H} = 0$ the minimum is supersymmetric, (see figure 3(a)), and the supertube generically sits close to one of the centers. The supersymmetric minimum describes a supertube whose radius can be found from eq. (2.11), and the backreaction of this configuration is a supersymmetric solution with three centers [46].

A minimum with $\mathcal{H} \neq 0$ describes a non-supersymmetric supertube (see figure 3(b)). Given that this tube is locally-BPS, we expect its backreaction to yield a solution that in the D1-D5-P duality frame is smooth at the supertube location. This smooth solution should represent a microstate of a non-supersymmetric black hole. It is interesting to ask whether the absolutely-stable non-supersymmetric minimum, which has no obvious decay channel, may correspond to an extremal non-BPS black hole, and hence fit in the recent classification of [51], or whether it will represent a very long-lived microstate of a non-extremal black hole.

As explained analytically in the previous section, for some choices of charges there also exist supersymmetric and non-supersymmetric stable minima where the supertube has zero size. As expected, this happens when one of the *effective* M2 charges $Q_I^{\text{eff}} = Q_I + K/V$ is zero (see figures 4(a) and 4(b)).

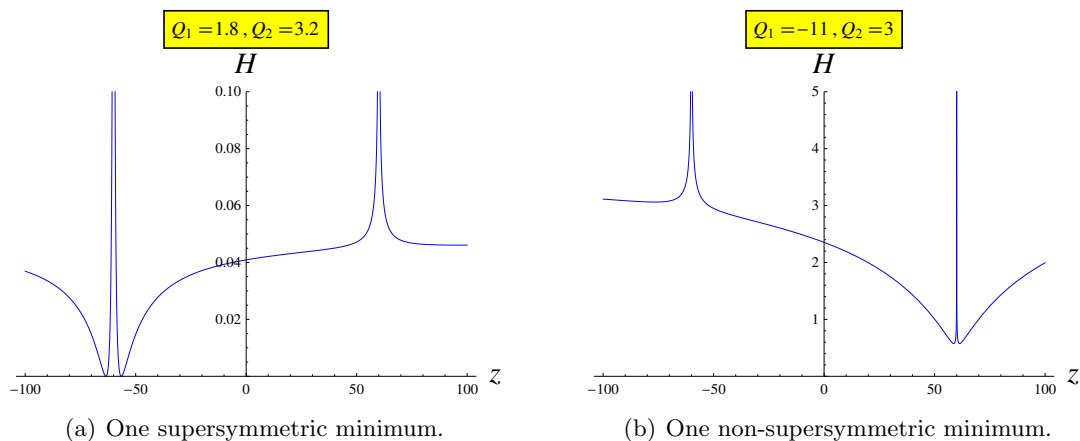


Figure 3. A single stable minimum between the two centers. When both charges are positive and have the same orientation as the background (which has electric potential $Z > 0$ at the left center), the minimum is supersymmetric. When one of the charges has the wrong orientation, the minimum is non-supersymmetric. Note that the apparent second minimum outside the 2-center range is connected to the one inside by a Mexican-hat-type potential around the center in the $z - \rho$ plane. As we will show below in figure 7, when supersymmetry is broken this Mexican-hat potential is slightly tilted.

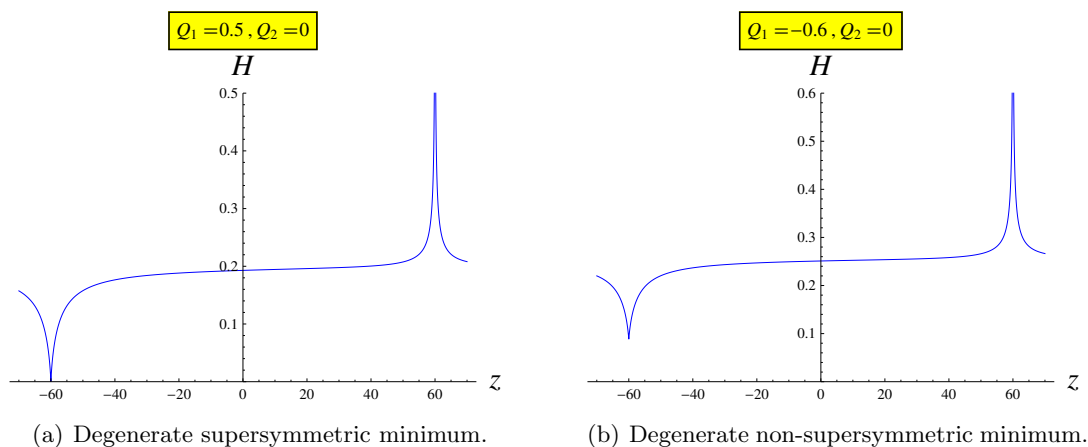


Figure 4. When one of the effective charges is zero, the supertube degenerates. In this example, we choose $Q_2 + \frac{K}{V}|_{r_1} = 0$. (Remember we work in patch “1” where $\frac{K}{V}|_{r_1} = 0$.) When the other charge has the same orientation as the background, the minimum is supersymmetric (a), when the orientations are opposite, the minimum is non-supersymmetric (b).

3.2.2 Two minima

There is also a wide range of charges for which two minima appear. The first possibility is to have two supersymmetric minima, which is depicted in figure 3.2.2.

Figure 5(a) illustrates two different positions (each one close to one of the background centers) at which a supertube with fixed charges Q_1, Q_2 can be located. Again, one of these minima can degenerate when one of the effective charges $Q_I + K/V$ goes to zero (figure 5(b)).

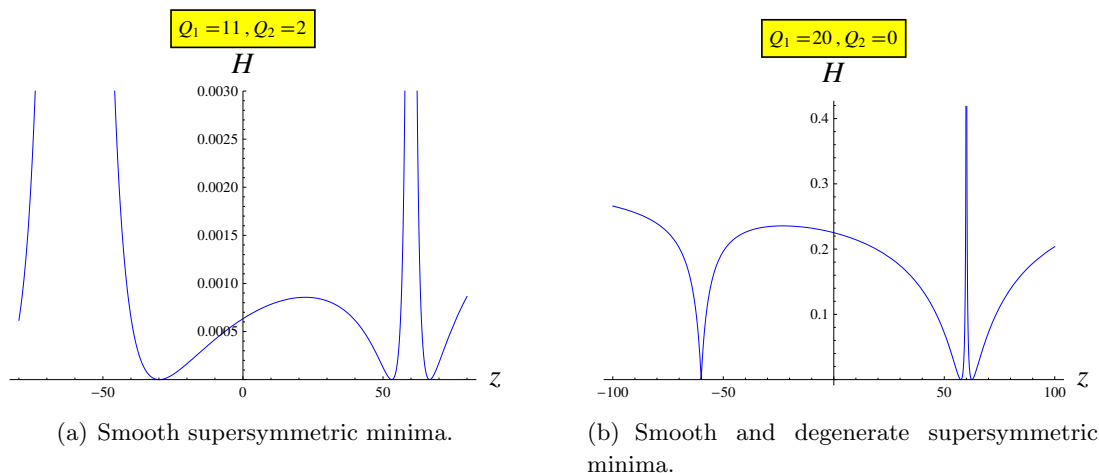


Figure 5. Two supersymmetric minima between the centers. When $Q_2 = 0$ in patch “1”, the minimum close to the left center degenerates, and the supertube becomes a collection of parallel branes. Again, the additional minima outside the 2-center range are connected to the ones inside by a Mexican-hat-type potential around the respective center in the $z - \rho$ plane.

The most interesting potentials arise when at least one of the two minima is non-supersymmetric, as depicted in figure 6. These describe a metastable tube close to one center that can decay to a stable tube close to the other center. The plots in figure 6 show that the stable tube can be either supersymmetric or non-supersymmetric.

Note that near the metastable minimum the potential looks like a Mexican hat brim that is very slightly tilted. This is hard to see from figure 6, and is shown in figure 7.

4 The decay of metastable supertubes

When the metastable supertube tunnels to the stable minimum, its quantized M2 charges stay the same, but its effective M2 charges

$$Q_1^{\text{eff}} = Q_1 + d_3 \frac{K^2}{V}, \quad Q_2^{\text{eff}} = Q_2 + d_3 \frac{K^1}{V}. \tag{4.1}$$

change. Much like the decay of antibranes in backgrounds with charge dissolved in flux [2, 5], the decay of the metastable supertube can be understood as brane-flux annihilation. However, since the supertube has multiple charges, and generically has a non-zero radius both before and after the decay, the details are a bit more involved.

Recall that the solution has a non-trivial magnetic flux through the two-cycle between the two GH points, given by

$$\Pi_{12}^{(I)} = \frac{1}{4\pi} \int_{r_1}^{r_2} dB^{(I)} = \frac{K^I}{V} \Big|_{r_2} - \frac{K^I}{V} \Big|_{r_1}. \tag{4.2}$$

Since the supertube has a non-trivial d_3 dipole charge which couples magnetically to $B^{(3)}$, when the supertube sweeps out the two-cycle from the North Pole to the South Pole, the amount of $\Pi_{12}^{(3)}$ flux on this two-cycle decreases by d_3 units.

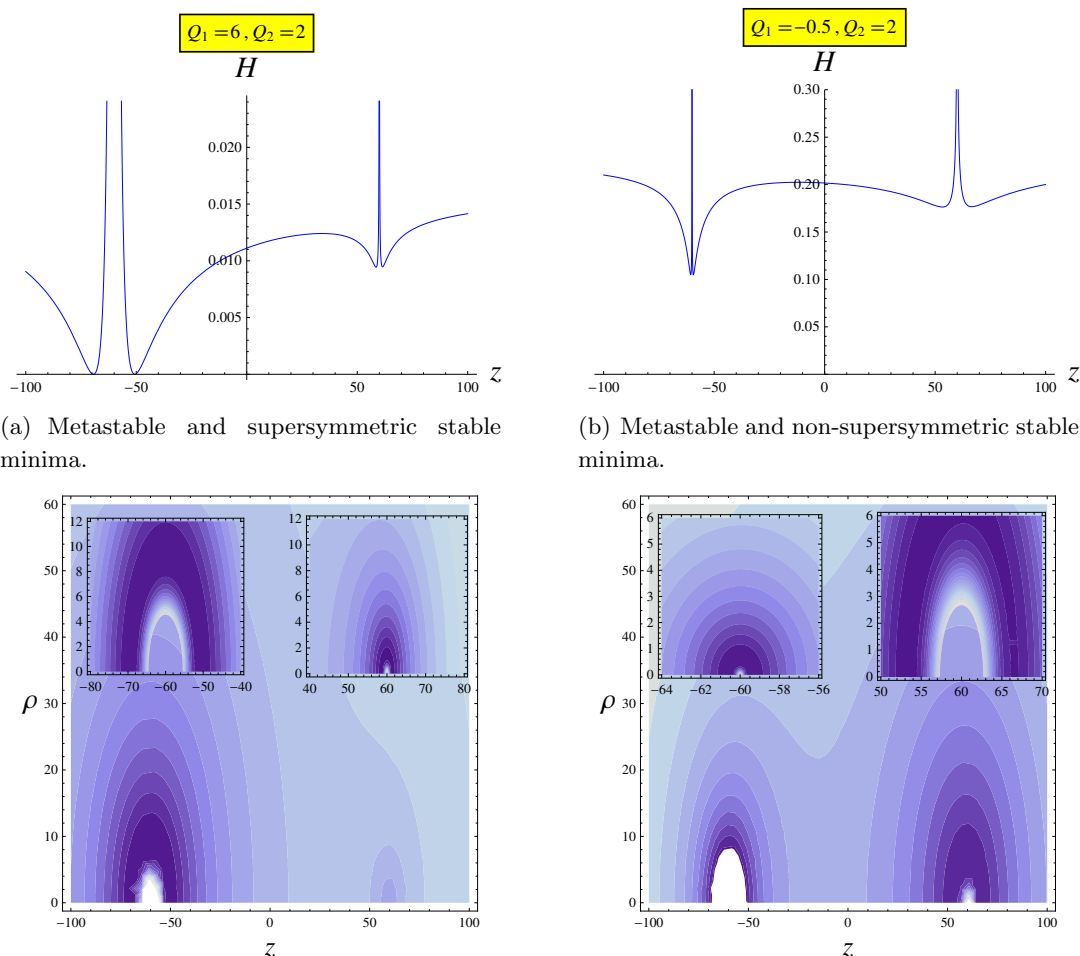


Figure 6. Metastable configurations. The supertube charges are given in the patch where there are no Dirac strings at the left center (point “1”). At this center, the M2 charge of the background is positive ($Z > 0$). When both charges are aligned with the background (left), the stable minimum is supersymmetric. When at least one of the supertube charges has the wrong orientation, the lowest minimum is non-supersymmetric.

Imagine now lowering from infinity a supertube to the metastable minimum. If this minimum is, say, near the North Pole, in order to bring the supertube “into position” we need to work in a patch where there is no Dirac string at this pole. The change of patch in supergravity is realized by a gauge transformation [11, 52], which transforms the eight harmonic functions via

$$\begin{aligned}
 V &\rightarrow V, & L_I &\rightarrow L_I - C_{IJK}\gamma^J K^K - \frac{1}{2}C_{IJK}\gamma^J \gamma^K V, \\
 K^I &\rightarrow K^I + \gamma^I V, & M &\rightarrow M - \frac{1}{2}\gamma^I L_I + \frac{1}{12}C_{IJK} (V\gamma^I \gamma^J \gamma^K + 3\gamma^I \gamma^J K^K),
 \end{aligned}
 \tag{4.3}$$

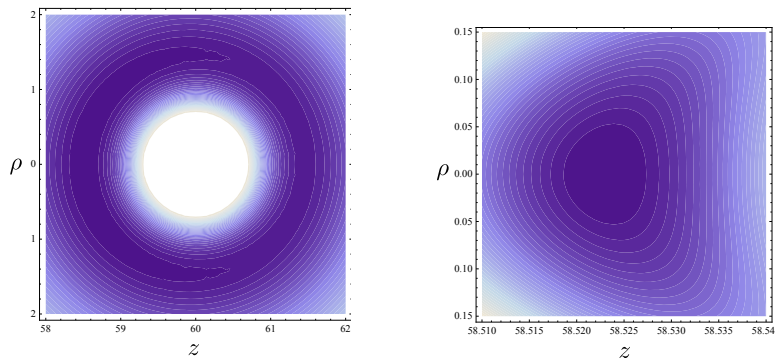


Figure 7. Two consecutive zooms on the minimum near $z = 60$ with $Q_1 = 6, Q_2 = 2$ of figure 6(c), shows the “Mexican-hat” type potential, which is slightly tilted to the left. (Darker colours mean lower energy.) The actual metastable minimum lies between the two centers on the symmetry axis.

where γ^I are constants, but leaves the warp factors, rotation vector and field strengths invariant. To reach a patch where there are no Dirac strings at the point i , one has to perform a gauge transformation such that the value of K^I/V at this point is zero, or alternatively K^I has no pole. It is not hard to see that to go from a patch where there are no Dirac strings at point i to a patch where there are no Dirac strings at the point j , the gauge transformation parameters γ^I have to be equal to the flux between the two centers:

$$\gamma_{ij}^I = \left. \frac{K^I}{V} \right|_{r_i} - \left. \frac{K^I}{V} \right|_{r_j} = -\Pi_{ij}^{(I)}. \tag{4.4}$$

Thus, when changing patch, in order to make sure that one is describing the same supertube, (with the same radius and energy), the *effective* supertube charges have to stay the same. Hence the quantized charges have to shift by

$$\begin{aligned} Q_{1,j} &= Q_{1,i} + d_3 \gamma_{ij}^2 = Q_{1,i} - d_3 \Pi_{ij}^{(2)}, \\ Q_{2,j} &= Q_{2,i} + d_3 \gamma_{ij}^1 = Q_{2,i} - d_3 \Pi_{ij}^{(1)}, \end{aligned} \tag{4.5}$$

where we have denoted by $Q_{1,i}$ and $Q_{2,i}$ the charges of the supertube in the patch where there are no Dirac strings at the point i . Note that for supersymmetric minima, the supergravity “GH charges” of the backreacted supertubes are equal to the quantized charges [46], and the shift of the quantized charges when one changes patch is the same as the shift of the GH charges under the gauge transformation (4.3).

To summarize this discussion, in order to describe the dynamics and vacuum structure of a supertube, one has to work in a fixed patch (in the examples above we have chosen the one where there are no Dirac strings at the point “1”). However, to understand the physics of a supertube minimum near one of the poles one has to change to a patch where there are no Dirac strings at that pole.

Armed with the understanding of how to change patches, we are now ready to explain how metastable supertubes decay. Let us first discuss the example where the metastable supertube decays to a degenerate supersymmetric minimum, illustrated in figure (9). In

the patch with no Dirac strings at the point “2”, the zero-radius supertube wraps the Dirac string at point “1”. Hence, this tube is non-contractible (cannot be taken away). In order to reveal that the zero-radius supertube is a bunch of parallel branes, one has to go to the patch with no Dirac strings at point “1”, and the charges of the branes will shift as in (4.5). These supersymmetric branes are now parallel to the background, and can be taken away to infinity.

So in the gedanken experiment of lowering the supertube into position at the metastable minimum, having it decay to the supersymmetric minimum and taking the decay products back to infinity, the charge difference between the initial and the final probe branes is

$$\Delta Q_1 = -d_3 \Pi_{12}^{(2)}, \quad \Delta Q_2 = -d_3 \Pi_{12}^{(1)}, \quad (4.6)$$

Furthermore, as we have explained above, when the supertube sweeps out the two-cycle between the points “i” and “j” it lowers the $\Pi^{(3)}$ flux of the background by d_3 units. Hence, the charges of the background, which come entirely from the magnetic fluxes

$$Q_1^{\text{bg}} = \Pi_{12}^{(2)} \Pi_{12}^{(3)} \quad Q_2^{\text{bg}} = \Pi_{12}^{(1)} \Pi_{12}^{(3)} \quad (4.7)$$

are lowered by exactly the amount in (4.6). The net result of this process is that the negative charges of the metastable tube have annihilated against the positive charges dissolved in flux.

One can repeat the same gedanken experiment with a metastable supertube that decays into a non-degenerate minimum: to take away the decay product one needs again to change patch, and thus shift the charges of the supertube as in (4.6). The change in charges of the tube is again compensated by a change in the fluxes, which reduces the charges of the background by the same amount.

5 Discussion and future directions

We have computed the Hamiltonian of supertubes in three-charge supersymmetric solutions with a Gibbons-Hawking base space, and found that this Hamiltonian can have both supersymmetric and non-supersymmetric minima. In the non-supersymmetric minima one or both of the effective charges of the supertube are oriented opposite to the background charges.

We have then focused on a specific two-center smooth solution, and found that a probe supertube can have also metastable minima, which decay into both supersymmetric and non-supersymmetric stable minima. We have then shown that during the decay, the supertube charges are either partially or totally annihilated against the charges dissolved in flux, much like it happens in other anti-brane probe constructions [2, 5].

Although we have only illustrated the existence of metastable vacua for a very specific example, we believe it is a generic phenomenon that can occur in all multi-center three-charge backgrounds, and in particular in the smooth solutions with long throats that give microstates of three-charge extremal supersymmetric black holes in five dimensions. The resulting metastable configurations should then represent microstates of non-extremal

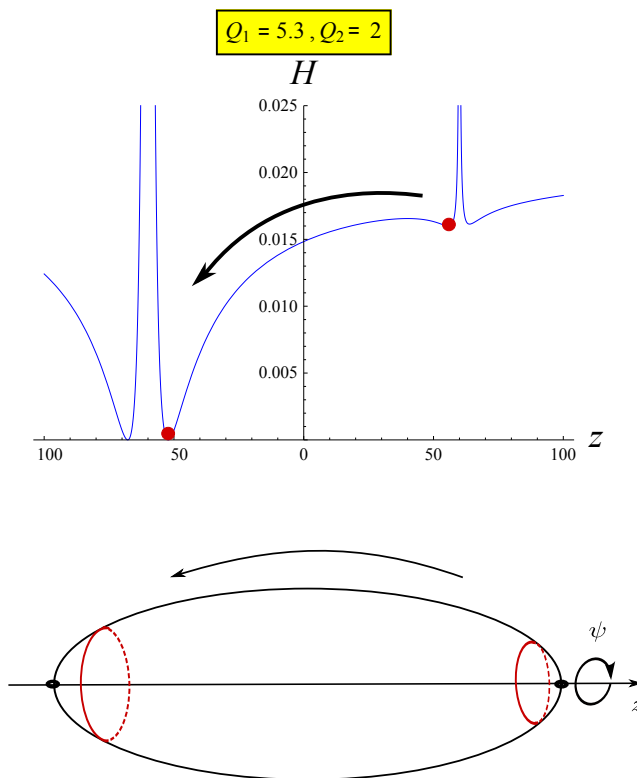


Figure 8. Illustration of the tunneling process. Supertubes are depicted as red circles wrapping the Gibbons-Hawking fiber ψ . A metastable supertube close to one center can tunnel to a stable supertube close to the other center, reducing in the process the flux on the two-cycle between these two centers.

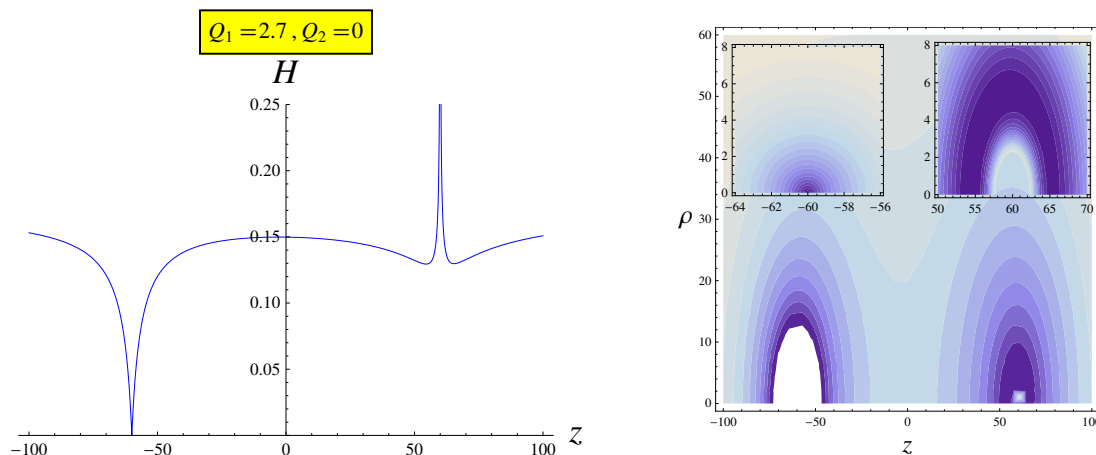


Figure 9. A metastable minimum and a degenerate supersymmetric at the center on the left. The white region in the contour plot on the right is an artifact of the choice of range for the contour plot; see the insets for a complete picture. The color scales in the insets and main contour plot are different.

black holes. It would be interesting to extend our proof-of-concept analysis to such more complicated backgrounds, and to argue that the fuzzballs of extremal black holes survive off-extremality.

Of course, to fully run this argument, and to understand the properties of non-extremal microstates in the same regime of parameters where the classical black hole exists, one would need to calculate the backreaction of the metastable supertubes, at least to first order. One might argue by analogy with other anti-brane backreaction calculations [6–10] that this may completely wreck the structure of the solution. One counter-argument might be that because our solutions are asymptotically flat, they will be less susceptible to backreaction problems.

The calculation of the backreacted solution would also reveal whether the non-extremal microstates obtained from metastable supertubes have ergospheres, as one expects [53] from the JMaRT solution [29], or have other, more surprising properties.⁸ The existence of an ergosphere would reveal an additional decay channel, on top of our tunneling instability which is related to Hawking radiation.

The other possible issue is that supertube backreaction in a microstate solution with a long throat will drive the throat to become longer, and will cause the fuzzball to collapse behind a horizon. If this happens to the generic microstate, this would imply that the singularity of non-extremal black holes is resolved by configurations that have at least an outer horizon. It is clearly very important to understand the fate of these configurations and whether or not they help to solve the information paradox.

Acknowledgments

We thank the participants in the Aspen workshop on “Singularities and Holography in String Theory” and the participants in the Benasque workshops on “String Theory” and on “Gravity - New Perspectives from Strings and Higher Dimensions” for discussions and suggestions, and we are grateful to the Aspen Center for Physics and the Centro de Ciencias de Benasque Pedro Pascual for hospitality. We also thank the referee for his very detailed and physically-insightful report. This work was supported in part by the ANR grant 08-JCJC-0001-0, by the ERC Starting Independent Researcher Grant 240210 - String-QCD-BH as well as by the Aspen Center for Physics NSF Grant 1066293.

A Three-charge solutions

A.1 Three charge solutions in M-theory and type IIA duality frames

A.1.1 M-theory solution

We begin by reviewing supersymmetric three-charge solutions in the eleven-dimensional “M-theory” duality frame in which the three asymptotic charges of the solution come from

⁸One might think that one can obtain a good estimate for the size of an ergoregion already in the probe approximation. However, the results of [6–10] indicate that anti-brane backreaction can affect a large region of spacetime around the antibranes, and the size of that region cannot be computed by the probe approximation.

M2 branes wrapped on three orthogonal T^2 's inside an internal T^6 [42]. The ansatz for the metric and three-form is:

$$ds_{11}^2 = -Z^{-2}(dt + k)^2 + Z ds_4^2 + Z \sum_{I=1}^3 \frac{ds_I^2}{Z_I}, \tag{A.1}$$

$$A_3 \equiv \sum_{I=1}^3 A^{(I)} \wedge dT_I = \sum_{I=1}^3 \left(-Z_I^{-1}(dt + k) + B^{(I)} \right) \wedge dT_I, \tag{A.2}$$

where $Z = (Z_1 Z_2 Z_3)^{1/3}$, ds_I^2 and dT_I are, respectively, a unit metric and unit volume form on the three T^2 's and ds_4^2 is a four-dimensional hyper-Kähler metric. The one-form k is supported on this four-dimensional base space and all functions appearing in the solution only depend on the base coordinates. Note that the ansatz for the gauge fields relates the warp functions Z_I appearing in the metric to the electric potentials, the $B^{(I)}$ are magnetic fields on the hyper-Kähler base.

We are interested in solutions whose four-dimensional base is with Gibbons-Hawking (GH) or multi-center Taub-NUT

$$ds_4^2 = V^{-1}(d\psi + A)^2 + V ds_3^2, \quad \star_3 dA = -dV, \tag{A.3}$$

where V is a harmonic function and ds^3 is the flat metric on \mathbb{R}^3 . Solutions with a GH base have a natural interpretation upon KK reduction along the GH fibre ψ (see below), and many supersymmetric bubbling solutions can be constructed [48–50], for a review see [11]. See figure 2 for a cartoon of a bubbling geometry.

The most general supersymmetric 3-charge bubbling solution is determined by 8 harmonic functions (V, K_I, L^I, M) on \mathbb{R}^3 which can have an arbitrary number, n , of sources:⁹

$$\begin{aligned} V &= v_0 + \sum_{i=1}^n \frac{v_i}{r_i}, & M &= m_0 + \sum_{i=1}^n \frac{m_{0,i}}{r_i}, \\ K_I &= k_0^I + \sum_{i=1}^n \frac{k_i^I}{r_i}, & L_I &= \ell_{I,0} + \sum_{i=1}^n \frac{\ell_{I,i}}{r_i}, \end{aligned} \tag{A.5}$$

with the i th source sitting at position \vec{r}_i . For the interpretation of $(v, k^I; l_I, m)$ as IIA brane charges, see table 1.

The warp factors and magnetic fields of a supersymmetric solution are:

$$B^I = V^{-1} K^I (d\psi + A) + \xi^I, \quad d\xi^I = -\star_3 dK^I \tag{A.6}$$

$$Z_I = L_I + \frac{1}{2} C_{IJK} V^{-1} K^J K^K \tag{A.7}$$

⁹We follow the notation of the eleven-dimensional solution of [42]. To make contact to Denef's multi-center solutions in four dimensions [37, 38, 54], the dictionary is

$$V = -\sqrt{2}H^0, \quad K^I = -\sqrt{2}H^I, \quad L_I = \sqrt{2}H_I, \quad M = \frac{1}{\sqrt{2}}H_0. \tag{A.4}$$

where $C_{IJK} = |\varepsilon_{IJK}|$. The angular momentum one-form k has the form:¹⁰

$$k = \mu(d\psi + A) + \omega, \tag{A.8}$$

$$\mu = \frac{1}{6}V^{-2}C_{IJK}K^IK^JK^K + \frac{1}{2}V^{-1}K^IL_I + M. \tag{A.9}$$

A.1.2 Two reductions to type-IIA, and their charge interpretatins

A solution of the form presented above, carries eight types of charges. Six are brane charges in eleven dimensions corresponding to three types of M2 branes, wrapped on three mutually orthogonal T^2 's inside T^6 (and smeared in the other directions) and three types of M5 branes, wrapped on the dual 4-cycles inside T^6 and having one worldvolume direction inside the hyper-Kähler base. When this base is Gibbons-Hawking, and the M2 and M5 branes respect the GH isometry, one can define two additional ‘geometric’ charges: (angular) momentum along the GH fiber ψ , (controlled by the harmonic function M , and Kaluza-Klein monopole charge (controlled by the harmonic function V).

When the GH harmonic function V asymptotes to a constant, the GH space becomes multi-center Taub-NUT, which is asymptotically $\mathbb{R}^3 \times S^1$. Upon KK reduction along the S^1 the 11-dimensional supergravity solution becomes a four-dimensional CY or torus compactification of type IIA string theory, and the eight charges of the five-dimensional geometry become asymptotic electric and magnetic charges in four dimensions.

For convenience, in table 1 we list the interpretation of the eight M-theory charges upon the ‘standard’ reduction to IIA along the GH coordinate ψ , and in an alternative reduction to IIA, over one of the torus directions. The latter, which we call the IIA’ frame, is the one we will use in the computation of the supertube Hamiltonian.

A.2 Physical conditions

There are several consistency conditions GH solutions have to satisfy which translate in part to constraints on the eight constants in the harmonic functions. Fixing the asymptotics of the metric and gauge field further constrains those constants. We also require a physical solution to be free of closed timelike curves (CTC’s), by demanding that the metric component $g_{\varphi\varphi} \geq 0$ for any periodically identified direction φ . If we furthermore impose that the solution has to be smooth, this puts severe restrictions on the allowed set of charges and gives an extra no-CTC condition. We summarize this conditions in the following. (See [11] for a complete discussion.)

Physical conditions for stable multi-center configurations:

- Absence of CTC’s requires:

$$Z_1Z_2Z_3V - \mu^2V^2 \geq 0, \quad VZ_I \geq 0. \tag{A.10}$$

¹⁰The rotation vector ω is a solution to $\star_3d\omega = \langle H, dH \rangle$ where $\langle \cdot, \cdot \rangle$ is the antisymmetric symplectic inner product and H the vector of harmonic functions as defined through (A.4). We do not need the form of ω in the rest of this paper.

Charge	M theory	IIA: M/S _ψ	IIA': M/S ₁
V → v _i	KKm	D6	KKm
K ^I → k _i ¹ k _i ² k _i ³	M5	D4	NS5
	M5	D4	NS5
	M5	D4	D4
L _I → l _{1,i} l _{2,i} l _{3,i}	M2	D2	F1
	M2	D2	D2
	M2	D2	D2
M → m _i	P _ψ	D0	P _ψ

Table 1. Interpretation in the M-theory and two IIA frames we use of the eight charges corresponding to the eight harmonic functions V, K^I, L_I, M . S_ψ denotes the GH circle with coordinate ψ , S_1 one of the directions of torus T_1 and P_ψ stands for momentum along the ψ circle (spacetime angular momentum).

The first condition follows from positivity of $g_{\psi\psi}$, the second set is equivalent to having both the polar angle in the three-dimensional base and the T^6 directions not to be timelike.¹¹

- To have a *smooth* geometry, the warp factors and the function μ appearing in the angular momentum one-form k must be regular as $r_i \rightarrow 0$.

This leaves only 4 out of the 8 charges at each center to be independent. In particular, one finds the relations

$$l_{I,i} = -\frac{1}{2} C_{IJK} \frac{k_i^J k_i^K}{v_i}, \quad m_i = \frac{1}{2} \frac{k_i^1 k_i^2 k_i^3}{q_i^2} \quad \forall i \text{ (no sum)}. \quad (\text{A.11})$$

- For such a smooth solution, there is a further restriction to ensure absence of CTC's. From the first condition in (A.10), namely $Z_1 Z_2 Z_3 V - \mu^2 V^2 \geq 0$, one notices that μ has to vanish at each center, since for $r_i \rightarrow 0$ the Z_I 's tend to finite values while V^{-1} goes to zero:

$$\mu|_{r_i=0} = 0. \quad (\text{A.12})$$

By explicitly performing the expansion around each center \vec{r}_i , the latter condition gives $N - 1$ so-called *bubble equations* [11, 48, 49]¹². They relate the magnetic flux (coming from dB^I) through each bubble to the physical size of each bubble, determined by the inter-center distances r_{ij} .

¹¹The sufficient no-CTC condition, which insures the existence of a time function is $Z_1 Z_2 Z_3 V - \mu^2 V^2 \geq \omega^2$ [49].

¹²In more general solutions [37, 38, 54] these equations come from imposing that ω should have no Dirac-Misner strings at the centers, but in smooth backgrounds this is equivalent to (A.12).

Charge	M theory	IIA: M/S_ψ	IIA': M/S_6
d_3	M5	D4	D4
Q_1	M2	D2	F1
Q_2	M2	D2	D2
J	J_ψ	D0	J_ψ

Table 2. Brane interpretation of the two-charge supertube in a three-charge background. The fourth charge J is related to the others by $|Q_1 Q_2| = |J d_3|$. J_ψ denotes (angular) momentum along the GH circle S_ψ .

Depending on the asymptotics, more constraints need to be imposed on the constants $v_0, k_0^I, \ell_{I,0}, m_0$. For example, asymptotically $\mathbb{R}^{4,1}$ solutions must have $v_0 = 0$ and $Z_I \rightarrow 1$ at spatial infinity, while asymptotically Taub-NUT solutions have $v_0 \neq 0$.

B Hamiltonian for a two-charge tube in a three-charge background

We want to describe two-charge supertubes in three-charge geometries. In the M-theory frame, the two charges of the supertube, Q_1 and Q_2 , correspond to M2 branes wrapped on the two-tori T_1 and T_2 within the T^6 . We study whether there are tubular configurations where the two sets of M2 branes blow up into an M5 brane along the GH direction ψ . We denote this tube as $M2\text{-}M2 \rightarrow M5$. The method is to write down the Lagrangian (consisting of a Born-Infeld and Wess-Zumino contribution) of an M5 brane with the lower-dimensional charges (corresponding to the two M2 branes) and search for stable configurations. This is done by looking for supersymmetric and non-supersymmetric (meta)stable minima in the Hamiltonian which is obtained from the Lagrangian by a Legendre transform.

Since the M5 brane worldvolume Lagrangian is rather involved [55], we choose to go to a frame that is more amenable to calculations. In particular, we reduce over one of the torus directions, such that the supertube charges are D2 branes and F1 strings that blow up into a D4 brane, and we will denote it henceforth as a “D2-F1 \rightarrow D4” supertube. This configuration is analogous (can be seen by two T-dualities) to the original supertube $D0\text{-}F1 \rightarrow D2$ [40, 41]: our D2’s couple to the magnetic Born-Infeld flux and the F1’s to the electric one. For this setup, we know perfectly well how to obtain the Hamiltonian. For a relation of the charges in the M-theory frame to that in the IIA frame, see table 2.

B.1 Reduction of the background along a torus direction

We work in the IIA’ duality frame of table 1. In the string frame, the NS-NS fields are [46]:

$$ds_{IIA,st}^2 = -(Z_2 Z_3)^{-1/2} Z_1^{-1} (dt + k)^2 + (Z_2 Z_3)^{1/2} ds_4^2 \tag{B.1}$$

$$+ \left(\frac{Z_1 Z_3}{Z_1^2} \right)^{1/2} dz^2 + (Z_2/Z_3)^{1/2} ds_2^2 + (Z_3/Z_2)^{1/2} ds_3^2 \tag{B.2}$$

$$B_2 = A^{(3)} \wedge dx_5 \tag{B.3}$$

$$e^{4\Phi} = \frac{Z_1 Z_2}{Z_3^2} \tag{B.4}$$

In the RR sector, the non-trivial fields are C_3 and C_5 . We only list the components we need for computing the supertube Lagrangian:

$$\begin{aligned} C_3 &= - \left[(Z_2^{-1} - 1)dt + \left(\frac{K^2}{V} - \frac{\mu}{Z_2} \right) d\psi \right] \wedge dT_2 \\ C_5 &= - \left[\frac{K^2}{VZ_1} + \left(\frac{K^1}{V} - \frac{\mu}{Z_1} \right) \right] dt \wedge d\psi \wedge dz \wedge dT_2. \end{aligned} \quad (\text{B.5})$$

B.2 Gibbons-Hawking hamiltonian

We consider F1-D2 \rightarrow D4 tubes with the D4 worldvolume embedding given as

$$t = \sigma^0, \quad \psi = \sigma^1, \quad z = \sigma^2, \quad (\text{B.6})$$

and σ^3, σ^4 along the torus T^2 .

The Lagrangian is

$$L = -N_{D4}T_{D4} \int \sqrt{g + B_2 + \mathcal{F}_2} + N_{D4}T_{D4} \int (C_5 + (B_2 + \mathcal{F}_2) \wedge C_3), \quad (\text{B.7})$$

where $\mathcal{F}_2 = 2\pi\alpha'F_2$ and F_2 is the induced abelian 2-form field strength on the D4 worldvolume. The lower-dimensional brane charges are introduced by the worldvolume flux

$$\mathcal{F}_2 = \mathcal{E}d\sigma^0 \wedge d\sigma^2 + \mathcal{B}d\sigma^3 \wedge d\sigma^4 \quad (\text{B.8})$$

The electric field \mathcal{E} sources IIA string charge along z , while the magnetic field \mathcal{B} induces D2 brane charge along the torus T^2 . The supertube Lagrangian (density) becomes

$$\begin{aligned} \mathcal{L} &= -\frac{d_3}{Z_1V} \sqrt{[K^3 + V(\mathcal{B} - \mu(1 - \mathcal{E}))]^2 + VZ_1Z_2(1 - \mathcal{E})(2 - Z_3(1 - \mathcal{E}))} \\ &\quad + \left(\frac{1}{Z_1} - 1 \right) d_3\mathcal{B} + \frac{d_3K^2}{VZ_1} + d_3 \left(\frac{\mu}{Z_1} + \frac{K^1}{V} \right) (1 - \mathcal{E}), \end{aligned} \quad (\text{B.9})$$

with the D4 dipole charge $d_3 = N_{D4}T_{D4}$. This Lagrangian was obtained in a different duality frame in [46] for $d_3 = 1$. The Hamiltonian is obtained by the Legendre transform of \mathcal{L} with respect to the electric field \mathcal{E} ,

$$\mathcal{H} = \Pi_{\mathcal{E}}\mathcal{E} - \mathcal{L}, \quad (\text{B.10})$$

where $\Pi_{\mathcal{E}} = \frac{\delta\mathcal{L}}{\delta\mathcal{E}}$ is the momentum conjugate to \mathcal{E} .

After quite some algebra, one finds the Hamiltonian in terms of the F1 and D2 charges, $Q_1 = \Pi_{\mathcal{E}}$ and $Q_2 = d_3\mathcal{B}$, and D4 dipole charge d_3

$$\begin{aligned} \mathcal{H} &= \frac{\sqrt{Z_1Z_2Z_3V^3}}{d_3(Z_1Z_2Z_3V - \mu^2V^2)} \sqrt{\tilde{Q}_1^2 + d_3^2 \frac{Z_1Z_2Z_3V - \mu^2V^2}{Z_2^2V^2}} \sqrt{\tilde{Q}_2^2 + d_3^2 \frac{Z_1Z_2Z_3V - \mu^2V^2}{Z_1^2V^2}} \\ &\quad + \frac{\mu V^2}{d_3(Z_1Z_2Z_3V - \mu^2V^2)} \tilde{Q}_1\tilde{Q}_2 - \frac{1}{Z_1}\tilde{Q}_1 - \frac{1}{Z_2}\tilde{Q}_2 - \frac{d_3\mu}{Z_1Z_2} + Q_1 + Q_2, \end{aligned} \quad (\text{B.11})$$

where we denote $\tilde{Q}_1 \equiv Q_1 + d_3(K^2/V - \mu/Z_2)$ and analogous for $(1 \leftrightarrow 2)$.

Open Access. This article is distributed under the terms of the Creative Commons Attribution License which permits any use, distribution and reproduction in any medium, provided the original author(s) and source are credited.

References

- [1] K.A. Intriligator, N. Seiberg and D. Shih, *Dynamical SUSY breaking in meta-stable vacua*, *JHEP* **04** (2006) 021 [[hep-th/0602239](#)] [[INSPIRE](#)].
- [2] S. Kachru, J. Pearson and H.L. Verlinde, *Brane/flux annihilation and the string dual of a nonsupersymmetric field theory*, *JHEP* **06** (2002) 021 [[hep-th/0112197](#)] [[INSPIRE](#)].
- [3] I.R. Klebanov and M.J. Strassler, *Supergravity and a confining gauge theory: duality cascades and χ_{SB} resolution of naked singularities*, *JHEP* **08** (2000) 052 [[hep-th/0007191](#)] [[INSPIRE](#)].
- [4] M. Cvetič, G. Gibbons, H. Lü and C. Pope, *Ricci flat metrics, harmonic forms and brane resolutions*, *Commun. Math. Phys.* **232** (2003) 457 [[hep-th/0012011](#)] [[INSPIRE](#)].
- [5] I.R. Klebanov and S.S. Pufu, *M-branes and metastable states*, *JHEP* **08** (2011) 035 [[arXiv:1006.3587](#)] [[INSPIRE](#)].
- [6] I. Bena, M. Graña and N. Halmagyi, *On the existence of meta-stable vacua in Klebanov-Strassler*, *JHEP* **09** (2010) 087 [[arXiv:0912.3519](#)] [[INSPIRE](#)].
- [7] I. Bena, G. Giecold and N. Halmagyi, *The backreaction of anti-M2 branes on a warped Stenzel space*, *JHEP* **04** (2011) 120 [[arXiv:1011.2195](#)] [[INSPIRE](#)].
- [8] I. Bena, G. Giecold, M. Graña, N. Halmagyi and S. Massai, *On metastable vacua and the warped deformed conifold: analytic results*, [arXiv:1102.2403](#) [[INSPIRE](#)].
- [9] G. Giecold, E. Goi and F. Orsi, *Assessing a candidate IIA dual to metastable supersymmetry-breaking*, *JHEP* **02** (2012) 019 [[arXiv:1108.1789](#)] [[INSPIRE](#)].
- [10] J. Blaback et al., *The problematic backreaction of SUSY-breaking branes*, *JHEP* **08** (2011) 105 [[arXiv:1105.4879](#)] [[INSPIRE](#)].
- [11] I. Bena and N.P. Warner, *Black holes, black rings and their microstates*, *Lect. Notes Phys.* **755** (2008) 1 [[hep-th/0701216](#)] [[INSPIRE](#)].
- [12] H. Lin, O. Lunin and J.M. Maldacena, *Bubbling AdS space and 1/2 BPS geometries*, *JHEP* **10** (2004) 025 [[hep-th/0409174](#)] [[INSPIRE](#)].
- [13] C.V. Johnson, R.C. Myers, A.W. Peet and S.F. Ross, *The enhancon and the consistency of excision*, *Phys. Rev. D* **64** (2001) 106001 [[hep-th/0105077](#)] [[INSPIRE](#)].
- [14] O. Lunin and S.D. Mathur, *Metric of the multiply wound rotating string*, *Nucl. Phys. B* **610** (2001) 49 [[hep-th/0105136](#)] [[INSPIRE](#)].
- [15] J. Polchinski and M.J. Strassler, *The string dual of a confining four-dimensional gauge theory*, [hep-th/0003136](#) [[INSPIRE](#)].
- [16] I. Bena, *The M-theory dual of a three-dimensional theory with reduced supersymmetry*, *Phys. Rev. D* **62** (2000) 126006 [[hep-th/0004142](#)] [[INSPIRE](#)].
- [17] D. Marolf, *The dangers of extremes*, *Gen. Rel. Grav.* **42** (2010) 2337 [[arXiv:1005.2999](#)] [[INSPIRE](#)].
- [18] E. Poisson and W. Israel, *Internal structure of black holes*, *Phys. Rev. D* **41** (1990) 1796 [[INSPIRE](#)].

- [19] P.R. Brady and J.D. Smith, *Black hole singularities: a numerical approach*, *Phys. Rev. Lett.* **75** (1995) 1256 [[gr-qc/9506067](#)] [[INSPIRE](#)].
- [20] M. Dafermos, *The interior of charged black holes and the problem of uniqueness in general relativity*, *Commun. Pure Appl. Math.* **58** (2005) 0445 [[gr-qc/0307013](#)] [[INSPIRE](#)].
- [21] S.D. Mathur, *The fuzzball proposal for black holes: an elementary review*, *Fortsch. Phys.* **53** (2005) 793 [[hep-th/0502050](#)] [[INSPIRE](#)].
- [22] S.D. Mathur, *Fuzzballs and the information paradox: a summary and conjectures*, [arXiv:0810.4525](#) [[INSPIRE](#)].
- [23] V. Balasubramanian, J. de Boer, S. El-Showk and I. Messamah, *Black holes as effective geometries*, *Class. Quant. Grav.* **25** (2008) 214004 [[arXiv:0811.0263](#)] [[INSPIRE](#)].
- [24] K. Skenderis and M. Taylor, *The fuzzball proposal for black holes*, *Phys. Rept.* **467** (2008) 117 [[arXiv:0804.0552](#)] [[INSPIRE](#)].
- [25] B.D. Chowdhury and A. Virmani, *Modave lectures on fuzzballs and emission from the D1-D5 system*, [arXiv:1001.1444](#) [[INSPIRE](#)].
- [26] R. Penrose, *Structure of space-time*, in *Battelle Rencontres*, C.M. DeWitt and J.A. Wheeler eds., W.A. Benjamin, New York U.S.A. (1968).
- [27] S.D. Mathur, *The information paradox: a pedagogical introduction*, *Class. Quant. Grav.* **26** (2009) 224001 [[arXiv:0909.1038](#)] [[INSPIRE](#)].
- [28] A. Maloney, work in progress.
- [29] V. Jejjala, O. Madden, S.F. Ross and G. Titchener, *Non-supersymmetric smooth geometries and D1-D5-P bound states*, *Phys. Rev. D* **71** (2005) 124030 [[hep-th/0504181](#)] [[INSPIRE](#)].
- [30] S. Giusto, S.F. Ross and A. Saxena, *Non-supersymmetric microstates of the D1-D5-KK system*, *JHEP* **12** (2007) 065 [[arXiv:0708.3845](#)] [[INSPIRE](#)].
- [31] I. Bena, S. Giusto, C. Ruef and N.P. Warner, *A (running) bolt for new reasons*, *JHEP* **11** (2009) 089 [[arXiv:0909.2559](#)] [[INSPIRE](#)].
- [32] N. Bobev and C. Ruef, *The nuts and bolts of Einstein-Maxwell solutions*, *JHEP* **01** (2010) 124 [[arXiv:0912.0010](#)] [[INSPIRE](#)].
- [33] V. Cardoso, O.J. Dias, J.L. Hovdebo and R.C. Myers, *Instability of non-supersymmetric smooth geometries*, *Phys. Rev. D* **73** (2006) 064031 [[hep-th/0512277](#)] [[INSPIRE](#)].
- [34] B.D. Chowdhury and S.D. Mathur, *Radiation from the non-extremal fuzzball*, *Class. Quant. Grav.* **25** (2008) 135005 [[arXiv:0711.4817](#)] [[INSPIRE](#)].
- [35] S.G. Avery, B.D. Chowdhury and S.D. Mathur, *Emission from the D1D5 CFT*, *JHEP* **10** (2009) 065 [[arXiv:0906.2015](#)] [[INSPIRE](#)].
- [36] D. Anninos, T. Anous, J. Barandes, F. Denef and B. Gaasbeek, *Hot halos and galactic glasses*, *JHEP* **01** (2012) 003 [[arXiv:1108.5821](#)] [[INSPIRE](#)].
- [37] F. Denef, *Supergravity flows and D-brane stability*, *JHEP* **08** (2000) 050 [[hep-th/0005049](#)] [[INSPIRE](#)].
- [38] B. Bates and F. Denef, *Exact solutions for supersymmetric stationary black hole composites*, *JHEP* **11** (2011) 127 [[hep-th/0304094](#)] [[INSPIRE](#)].
- [39] D. Mateos and P.K. Townsend, *Supertubes*, *Phys. Rev. Lett.* **87** (2001) 011602 [[hep-th/0103030](#)] [[INSPIRE](#)].

- [40] D. Mateos, S. Ng and P.K. Townsend, *Tachyons, supertubes and brane/anti-brane systems*, *JHEP* **03** (2002) 016 [[hep-th/0112054](#)] [[INSPIRE](#)].
- [41] R. Emparan, D. Mateos and P.K. Townsend, *Supergravity supertubes*, *JHEP* **07** (2001) 011 [[hep-th/0106012](#)] [[INSPIRE](#)].
- [42] I. Bena and N.P. Warner, *One ring to rule them all... and in the darkness bind them?*, *Adv. Theor. Math. Phys.* **9** (2005) 667 [[hep-th/0408106](#)] [[INSPIRE](#)].
- [43] J.B. Gutowski and H.S. Reall, *General supersymmetric AdS_5 black holes*, *JHEP* **04** (2004) 048 [[hep-th/0401129](#)] [[INSPIRE](#)].
- [44] J.P. Gauntlett and J.B. Gutowski, *General concentric black rings*, *Phys. Rev. D* **71** (2005) 045002 [[hep-th/0408122](#)] [[INSPIRE](#)].
- [45] H. Elvang, R. Emparan, D. Mateos and H.S. Reall, *Supersymmetric black rings and three-charge supertubes*, *Phys. Rev. D* **71** (2005) 024033 [[hep-th/0408120](#)] [[INSPIRE](#)].
- [46] I. Bena, N. Bobev, C. Ruef and N.P. Warner, *Supertubes in bubbling backgrounds: Born-Infeld meets supergravity*, *JHEP* **07** (2009) 106 [[arXiv:0812.2942](#)] [[INSPIRE](#)].
- [47] I. Bena, N. Bobev, C. Ruef and N.P. Warner, *Entropy enhancement and black hole microstates*, *Phys. Rev. Lett.* **105** (2010) 231301 [[arXiv:0804.4487](#)] [[INSPIRE](#)].
- [48] I. Bena and N.P. Warner, *Bubbling supertubes and foaming black holes*, *Phys. Rev. D* **74** (2006) 066001 [[hep-th/0505166](#)] [[INSPIRE](#)].
- [49] P. Berglund, E.G. Gimon and T.S. Levi, *Supergravity microstates for BPS black holes and black rings*, *JHEP* **06** (2006) 007 [[hep-th/0505167](#)] [[INSPIRE](#)].
- [50] A. Saxena, G. Potvin, S. Giusto and A.W. Peet, *Smooth geometries with four charges in four dimensions*, *JHEP* **04** (2006) 010 [[hep-th/0509214](#)] [[INSPIRE](#)].
- [51] G. Bossard and C. Ruef, *Interacting non-BPS black holes*, *Gen. Rel. Grav.* **44** (2012) 21 [[arXiv:1106.5806](#)] [[INSPIRE](#)].
- [52] I. Bena, P. Kraus and N.P. Warner, *Black rings in Taub-NUT*, *Phys. Rev. D* **72** (2005) 084019 [[hep-th/0504142](#)] [[INSPIRE](#)].
- [53] B.D. Chowdhury and S.D. Mathur, *Non-extremal fuzzballs and ergoregion emission*, *Class. Quant. Grav.* **26** (2009) 035006 [[arXiv:0810.2951](#)] [[INSPIRE](#)].
- [54] F. Denef, *Quantum quivers and Hall/hole halos*, *JHEP* **10** (2002) 023 [[hep-th/0206072](#)] [[INSPIRE](#)].
- [55] P. Pasti, D.P. Sorokin and M. Tonin, *Covariant action for a $D = 11$ five-brane with the chiral field*, *Phys. Lett. B* **398** (1997) 41 [[hep-th/9701037](#)] [[INSPIRE](#)].