

RESEARCH ARTICLE

Open Access



Prognostic implications of PD-L1 expression in patients with soft tissue sarcoma

Chan Kim^{1,10}, Eun Kyung Kim², Hun Jung³, Hong Jae Chon^{1,10}, Jung Woo Han⁴, Kyoo-Ho Shin⁵, Hyuk Hu⁶, Kyung Sik Kim⁶, Young Deuk Choi⁷, Sunghoon Kim⁸, Young Han Lee⁹, Jin-Suck Suh⁹, Joong Bae Ahn¹, Hyun Cheol Chung¹, Sung Hoon Noh⁶, Sun Young Rha¹, Soo Hee Kim^{11*†} and Hyo Song Kim^{1*†}

Abstract

Background: The PD-1/PD-L1 axis plays a paramount role in the immune escape of tumor cells by negative regulation of T-cell functions. The aim of the present study was to characterize the PD-L1 expression pattern and its clinical implication in soft-tissue sarcomas (STS).

Methods: We analyzed PD-L1 expression in 82 STS patients with 5 subtypes: rhabdomyosarcoma, synovial sarcoma, Ewing sarcoma, epithelioid sarcoma, and mesenchymal chondrosarcoma.

Results: The median age at diagnosis was 26 (range: 1–78) and the male to female ratio was 1.6. The majority (80 %) of patients showed locoregional disease rather than metastatic disease at diagnosis. Thirty-five cases (43 %) showed PD-L1 expression and the proportion of PD-L1 expression was significantly different according to histologic subtypes ($P=0.004$); highest in epithelioid sarcoma (100 %, 7/7), followed by synovial sarcoma (53 %, 10/19), rhabdomyosarcoma (38 %, 12/32), and Ewing sarcoma (33 %, 6/18), while it was not expressed in mesenchymal chondrosarcoma (0 %, 0/6). STS patients with PD-L1 expression had worse overall survival compared with those without PD-L1 expression (5-year survival rate: 48 % vs. 68 %, $P=0.015$). The Cox proportional hazard model adjusted for histologic subtype, initial metastasis, and PD-L1 expression showed that PD-L1 expression was significantly associated with shorter overall survival ($P=0.037$, HR 2.57, 95 % CI 1.060–6.231).

Conclusion: We have confirmed PD-L1 expression in various STS of young population and demonstrated its independent negative prognostic role, thereby suggesting the PD-1/PD-L1 axis as a potential therapeutic target for the treatment of young STS patients.

Keywords: Soft tissue sarcoma, PD-L1, Biomarker, Prognosis

Background

Sarcomas are a rare and highly heterogeneous group of neoplasms originating from the bone and soft tissue, which account for <1 % of all human malignancies [1, 2]. With strikingly variable genetic aberrations, various sarcomas have abnormal fusion proteins arising from translocations. In spite of the multimodality treatments with surgery, radiotherapy, and combination chemotherapy,

more than 40 % of cases ultimately experience tumor recurrence, which results in an overall survival (OS) of <12 months [3]. There are still only a few treatment options left when conventional treatment fails; thereby, novel anti-cancer therapeutics are desperately needed to treat these devastating diseases.

It is well known that the prognosis of a malignant tumor is closely related to host immune responses. During the immune response, the priming and activation of T-cells are critical processes in the induction of adaptive immunity, and the ultimate amplitude of the immune response is regulated by a balance between co-stimulatory and inhibitory signals. In this T-cell-mediated process, cytotoxic T-lymphocyte antigen 4 (CTLA-4) provides inhibitory signals in the priming phase of the T-cell response

* Correspondence: luhi7@naver.com; hyosong77@yuhs.ac

†Equal contributors

¹¹Anatomic Pathology Reference Lab, Seegene Medical Foundation, Seoul 05548, Korea

¹Division of Medical Oncology, Department of Internal Medicine, Yonsei University College of Medicine, 134 Shinchondong, Seodaemun-gu, Seoul 03722, Korea

Full list of author information is available at the end of the article



within the lymph node. The programmed death 1 (PD-1) receptor is one of the key inhibitory signals that is induced during the chronic antigen exposure in peripheral tumor microenvironments. The interaction between PD-L1 in tumor cells and PD-1 in T-lymphocytes negatively regulates the effector function of tumor-specific T-lymphocytes and allows tumor cells to evade the host immune system. Recent studies have indicated that high expression of PD-L1 is associated with poor prognosis in non-small cell lung cancer (NSCLC), ovarian cancer, and kidney cancer [4–7]. Furthermore, because anti-PD-1 antibodies were approved in melanoma and lung cancer with robust efficacy and safety profiles, much attention has paid to the PD-L1 expression in various solid malignancies. However, the presence of PD-L1 and its clinical implications in sarcoma have not been widely investigated to date.

In this study, we investigated PD-L1 expression in soft tissue sarcoma and evaluated its clinical relevance according to different subtypes of sarcoma. We thereafter analyzed the prognostic potential of PD-L1 to provide a practical guide as a diagnostic and therapeutic strategy.

Methods

Patients and tissue samples

This study was conducted in a retrospective cohort of patients who were pathologically diagnosed with CD99 positive sarcomas such as rhabdomyosarcoma, synovial sarcoma, Ewing sarcoma, epithelioid sarcoma, and mesenchymal chondrosarcoma, between 1994 and 2013 at Yonsei Cancer Center. A total of 82 formalin-fixed, paraffin-embedded tissue blocks were available for examination of PD-L1 expression. All hematoxylin and eosin (H&E) slides were independently reviewed by two experienced pathologists (E.K.K. and S.H.K.).

The clinicopathologic variables such as sex, age, maximal tumor size, tumor histology and grade, tumor location, tumor stage, initial presentation of disease, and the status of the resection margin were reviewed retrospectively based on electronic medical records. Tumors were graded according to the French Federation Nationale des Centre de Lutte Contre le Cancer (FNCLCC) criteria [8]. Staging was determined using the 7th edition of the American Joint Committee on Cancer guideline of tumor, node, and metastasis (TNM) classification. The study was approved by the institutional review board of Severance Hospital, Seoul, Korea.

Tissue microarray (TMA) construction

Simple, inexpensive, and precise paraffin TMAs were constructed with a conventional microcompound table and a drill grinder. The original H&E slides were reviewed by two pathologists (E.K.K. and S.H.K.). One or two different tumor areas per case were selected for

tissue microarray construction. Core tissue biopsies (3 mm in diameter) were taken from the individual paraffin blocks (donor blocks) and arranged in recipient paraffin blocks (tissue array blocks) using a trephine apparatus. All TMA blocks were confirmed by H&E staining.

Immunohistochemical staining and assessment

Immunohistochemistry (IHC) staining of PD-L1 was performed on the TMA blocks using a mouse monoclonal antibody for PD-L1 (clone 130021, R&D Systems, Minneapolis, MN). Four-micrometer-thick sections were prepared and stained using a Ventana automatic immunostainer (Ventana, Benchmark, Tucson, AZ) [9]. After deparaffinization, heat-induced antigen retrieval was performed using pH 6.0 citrate buffer (CC1 protocol, Ventana, Tucson, AZ), and reactivity was detected using the Cell Mark detection kit (catalog no. 315-M-94). The sections were incubated with the primary antibody for 32 min at room temperature (dilution 1:100). The slides were counterstained with hematoxylin. Positivity for PD-L1 was evaluated and determined independently by two experienced pathologists (E.K.K. and S.H.K.). In the case of discrepancy, a consensus was made through an in-depth discussion on multi-head microscopic observations. The intensity and percentage of PD-L1 positive tumor cells were counted manually in at least 100 viable tumor cells from 4 representative fields in each case. Because there was no consensus on the scoring system for PD-L1 expression, especially in sarcoma, we modified the previous protocol [10] and describe PD-L1 expression as much detail as possible by a semi-quantitative manner using the intensity multiplied by the proportion. The staining intensity was graded as negative (0), weak to moderate (1), or strong (2), and the proportion was categorized by the percentage of positive cells as 0, no positive tumor cells; 1+, less than 10 %; 2+, 10–50 %; and 3+, >50 %. Based on the multiplication score, a score of 0 or 1 was considered as negative PD-L1 expression, whereas scores greater than 2 were considered positive PD-L1 expression.

Statistical methods

The Statistical Package for the Social Sciences (SPSS) version 18.0 (IBM, Chicago, IL) was used for statistical analyses. The correlations between PD-L1 expression and clinicopathologic variables were analyzed using the independent sample *t*-test for the continuous variables and the chi-square test for the discrete variables. For survival analysis, recurrence-free survival (RFS) was defined as the time interval between surgery and tumor recurrence or last follow-up. OS was defined as the time interval between the diagnosis of metastatic/recurrent disease and death or last follow-up. Survival analysis was performed using the Kaplan-Meier method with the

log-rank test. Multivariate analyses for OS were performed with Cox's regression. The accepted level of statistical significance was $P < 0.05$.

Results

Patient characteristics

The baseline clinicopathologic characteristics of the patients are summarized in Table 1. The male-to-female ratio was 1.6:1, and the median age at the time of diagnosis was 26 years (range 1–78). The median tumor size was 5 cm, and two-thirds of cases showed low- or intermediate-grade tumors. Approximately half of the cases were rhabdomyosarcoma ($n = 32$, 39 %), followed by synovial sarcoma ($n = 19$, 23 %), Ewing sarcoma ($n = 19$, 22 %), epithelioid sarcoma ($n = 7$, 9 %), and mesenchymal chondrosarcoma ($n = 6$, 7 %). One third of the tumors were located in the extremities ($n = 27$, 33 %). Most patients had no distant metastasis at the time of diagnosis (82 %) and underwent surgical resection (93 %). Adjuvant chemotherapy was

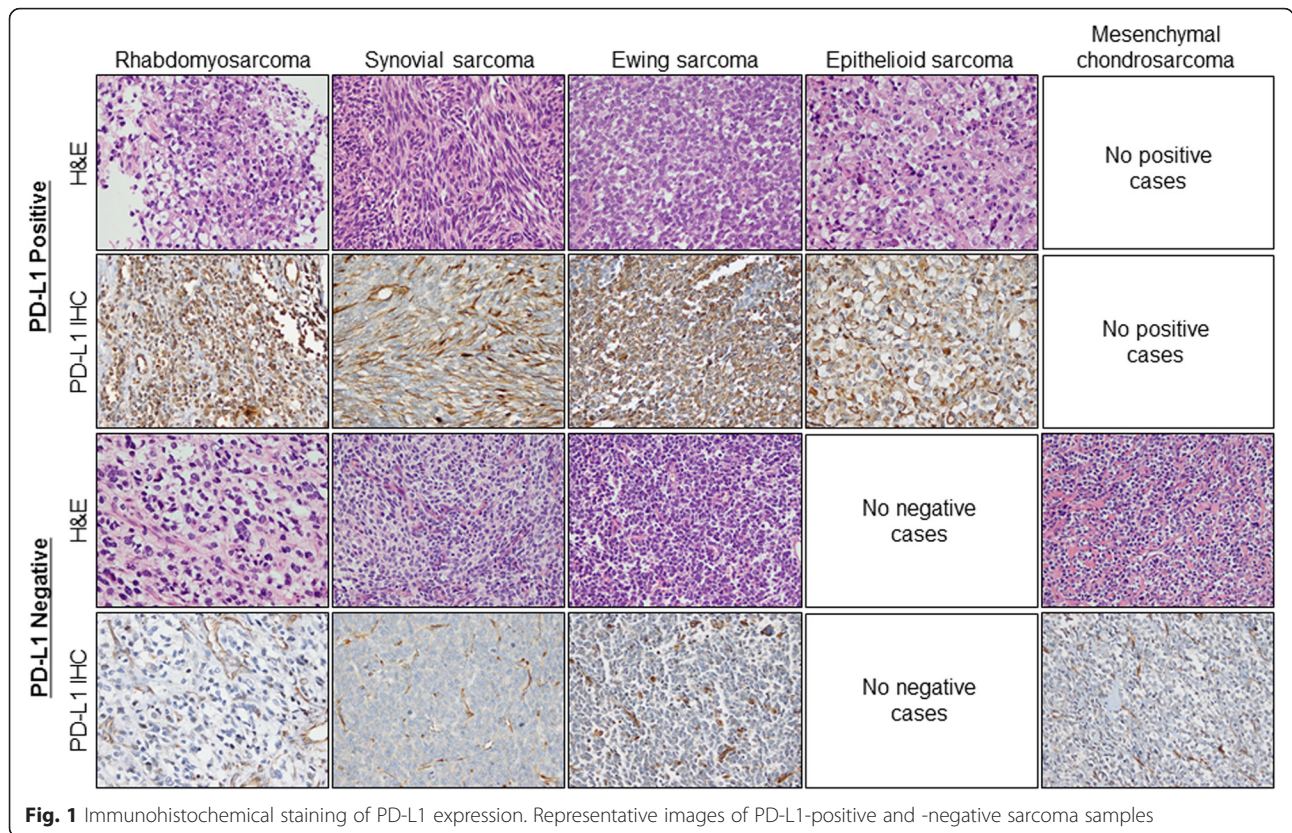
administered to 47 patients (57 %), and 37 of these patients (79 %) also received adjuvant radiotherapy.

PD-L1 expression status and clinicopathologic features

Among the 82 sarcoma patients, PD-L1 was expressed in 35 cases (43 %). Representative images of PD-L1-positive and -negative staining for each histologic type are shown in Fig. 1. In the positive cases, PD-L1 was positive in the cytoplasmic membrane of the tumor cells and intratumoral endothelial cells. PD-L1 expression was significantly different according to the histologic subtype of sarcoma ($P = 0.004$). The proportion of PD-L1-expressing tumors was highest in epithelioid sarcoma (100 %, 7/7), followed by synovial sarcoma (53 %, 10/19), rhabdomyosarcoma (38 %, 12/32), and Ewing sarcoma (33 %, 6/18), whereas it was not expressed in mesenchymal chondrosarcoma (0 %, 0/6). Patients with PD-L1 expression had a more negative resection margin than the PD-L1-negative group (86 % vs. 62 %, $P = 0.017$). There was no

Table 1 Baseline characteristics

Variables		N (%)	PD-L1 expression		P value
			-	+	
Sex	Male	50 (61 %)	31 (66 %)	19 (54 %)	0.284
	Female	32 (39 %)	16 (34 %)	16 (46 %)	
Age (year, median, range)		26 (1–78)	26.3 ± 19.7	30.6 ± 20.0	0.773
Tumor size (cm, median, range)		5.0 (1.5–12.0)	5.0 ± 1.8	5.3 ± 1.7	0.711
Histologic type	Rhabdomyosarcoma	32 (39 %)	20 (43 %)	12 (34 %)	0.004
	Synovial sarcoma	19 (23 %)	9 (19 %)	10 (29 %)	
	Ewing sarcoma	18 (22 %)	12 (26 %)	6 (17 %)	
	Epithelioid sarcoma	7 (9 %)	0 (0 %)	7 (20 %)	
	Mesenchymal chondrosarcoma	6 (7 %)	6 (13 %)	0 (0 %)	
Tumor location	Trunk	13 (16 %)	9 (19 %)	4 (11 %)	0.073
	Abdomen/pelvis	20 (24 %)	14 (30 %)	6 (17 %)	
	Head/Neck	22 (27 %)	14 (30 %)	8 (23 %)	
	Extremities	27 (33 %)	10 (21 %)	17 (49 %)	
FNCLCC Grade	1	17 (21 %)	11 (23 %)	6 (17 %)	0.242
	2	34 (41 %)	19 (40 %)	15 (43 %)	
	3	31 (38 %)	17 (36 %)	14 (40 %)	
Initial distant metastasis	No	67 (82 %)	38 (81 %)	29 (83 %)	0.816
	Yes	15 (18 %)	9 (19 %)	6 (17 %)	
Surgery	No	6 (7 %)	2 (4 %)	4 (11 %)	0.217
	Yes	76 (93 %)	45 (96 %)	31 (89 %)	
Resection margin	Negative	59 (72 %)	29 (62 %)	30 (86 %)	0.017
	Positive	23 (28 %)	18 (38 %)	5 (14 %)	
Chemotherapy	No	35 (43 %)	21 (45 %)	14 (40 %)	0.672
	Yes	47 (57 %)	26 (55 %)	21 (60 %)	
Radiotherapy	No	45 (55 %)	26 (55 %)	19 (54 %)	0.926
	Yes	37 (45 %)	21 (45 %)	16 (46 %)	

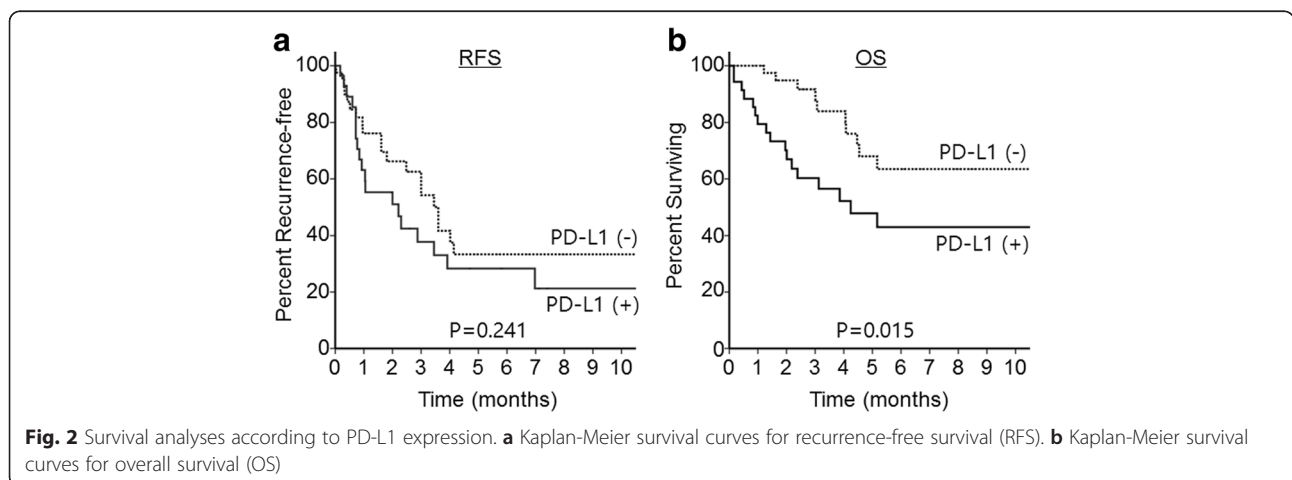


significant difference in PD-L1 expression regarding age, sex, tumor size, location, histologic grade, surgical resection, and adjuvant treatment.

Survival outcome according to PD-L1 expression

After a median follow-up duration of 33.8 months, 27 patients (33 %) had died at the time of survival analysis. The 5-year OS for all patients was 58.8 % and the 5-year OS rates of the subgroups were as follows: 64 % for rhabdomyosarcoma, 77 % for synovial sarcoma, 39 % for Ewing sarcoma, 18 % for epithelioid sarcoma, and 100 %

for chondrosarcoma. There was a trend toward a worse RFS for the positive PD-L1 expression group compared to the negative group (Fig. 2a). Expression of PD-L1 in the tumor tissue significantly predicted shortened OS (5-year OS rate, 48 % vs. 68 %; hazard ratio [HR] = 2.545; 95 % confidence interval [CI] = 1.16–5.56; $P = 0.015$, Fig. 2b). Because the study cohort includes patients with initial distant metastasis and this could influence the survival outcome, we also analyzed the RFS and OS after excluding patients with metastatic disease. The trend for RFS and OS were almost comparable whether we exclude



or not the metastatic patients (Additional file 1: Figure S1). The clinicopathologic variables significantly correlated with OS by univariate analysis were histologic subtype, initial metastasis, and PD-L1 expression (Table 2). In the Cox proportional hazard model adjusted for histologic subtype, initial metastasis, and PD-L1 expression, PD-L1 expression was significantly associated with shorter OS ($P = 0.037$, HR = 2.57, 95 % CI = 1.06–6.23).

Discussion

In this study, we evaluated the clinical relevance of PD-L1 expression in various sarcoma subtypes. PD-L1 was differently expressed according to the histologic subtypes of sarcoma and it was found to be an independent prognostic factor for OS.

William Coley, a bone surgeon at New York Memorial Hospital, depicted the spontaneous tumor regression of sarcoma patients after severe bacterial infection more than 100 years ago [10, 11]. Subsequently, there were several reports related to the cure of metastatic sarcoma with aggressive surgical resection, which suggested a potential therapeutic role of immune surveillance [12]. Since then, the interest in immunotherapy for sarcoma treatment has risen and fallen. Hypothetically, because several types of sarcoma have a common and specific chromosomal translocation, the resulting fusion proteins may be potential tumor neoantigens that could be appropriate targets for immunotherapy [13].

Based on this theoretical background, numerous clinical trials were attempted in sarcoma patients with various immunomodulatory agents such as macrophage-colony stimulating factor (GM-CSF), peptide vaccines, and anti-CTLA-4 antibody [14–16]. Inhaled GM-CSF was introduced for 43 patients with first isolated pulmonary recurrence of osteosarcoma [14]. Although this treatment seemed feasible with low toxicity, no immunomodulatory effect or improved outcome was observed. Another study

with the anti-CTLA-4 antibody ipilimumab for synovial sarcoma was halted due to poor accrual and no clinical response [16]. Besides these disappointing results in previous clinical trials, there have been few studies exploring potential therapeutic targets for immunotherapy in sarcoma conducted to date.

Recently, with the impressive and outstanding success of pembrolizumab and nivolumab in melanoma, NSCLC, and other malignancies [17, 18], immune checkpoint inhibitors have come into the limelight for the treatment of various solid tumors. Although numerous trials of PD-1/PD-L1 inhibitors are ongoing for various solid tumors, there has been minimal research to investigate the clinical significance of the PD-1/PD-L1 axis in sarcoma. In the present study, we revealed that 42.7 % of the sarcoma patients had positive expression of PD-L1, which varied according to histologic subtypes. Epithelioid and synovial sarcoma had higher positive expression rates (100 and 53 %), whereas mesenchymal chondrosarcoma cases revealed no PD-L1 expression. This finding suggests that PD-L1 expression is also heterogeneous according to different histologic subtypes of sarcoma, and that PD-L1 blockade could be a novel and promising therapeutic strategy in this orphan tumor.

The PD-1/PD-L1 expression level has been reported to be related to poor survival in other solid tumors. In a previous report of renal cell carcinoma, PD-1 expression in tumor-infiltrating lymphocytes was observed in half of the cases and was associated with poor survival [7]. Moreover, PD-L1 expression was reported in half of the gastric cancer and lung cancer cases and was an independent negative prognostic factor for OS [19, 20]. In the present study, in addition to determining the frequency of PD-L1 expression according to histologic subtypes, we were able to demonstrate the prognostic role of the intratumoral PD-L1 expression in sarcoma. PD-L1 was significantly associated with shorter 5-year OS regardless of sex,

Table 2 Univariate and multivariate analysis for overall survival

Variables	Univariate		Multivariate	
	5-years OS	P-value	HR (95 % CI)	P-value
Sex (Male vs. Female)	63 % vs. 52 %	0.553		
Age (≥ 20 vs. < 20)	60 % vs. 57 %	0.871		
Tumor size (≥ 5 cm vs. < 5 cm)	53 % vs. 65 %	0.136		
Histologic type (Epi. Sarcoma vs. Others)	18 % vs. 63 %	0.004	1.459 (0.414–5.137)	0.556
Tumor location (Axial vs. Extremity)	57 % vs. 63 %	0.423		
Initial metastasis (Yes vs. No)	33 % vs. 65 %	0.034	2.335 (0.858–6.351)	0.097
Surgery (Yes vs. No)	62 % vs. 40 %	0.069		
Margin status (Positive vs. Negative)	51 % vs. 62 %	0.819		
Adjuvant therapy (Yes vs. No)	58 % vs. 65 %	0.921		
PD-L1 expression (Yes vs. No)	48 % vs. 68 %	0.015	2.490 (1.032–6.007)	0.042

HR hazard ratio, CI confidence interval

age, tumor size, histology, location, surgical outcome, and adjuvant treatment, implying that PD-L1 is an independent negative prognostic factor in sarcoma.

Moreover, besides the prognostic value of PD-L1 expression in human cancers, it is becoming increasingly recognized as an important biomarker for predicting the treatment efficacy of PD-1/PD-L1 blockade. In the KEYNOTE-012 phase IB trial (ClinicalTrials.gov Identifier; NCT01848834) [21], patients with advanced gastric cancer were screened for PD-L1 expression (positivity was defined as PD-L1 expression in ≥ 1 % of cells in tumor nests or according to stromal staining using IHC with the 22C3 PD-L1 antibody), and 41 % were PD-L1-positive cases. After treatment with an anti-PD-1 antibody, pembrolizumab, a promising objective response rate (22 %), 6-month progression free survival (26 %), and 6-month OS (66 %) were observed. Furthermore, Herbst et al. [22] reported the association of PD-L1 expression in tumor-infiltrating immune cells with the response to an anti-PD-L1 monoclonal antibody, MPDL3280A, in which 83 % of IHC 3+ NSCLC cases showed a response, whereas the response rate was less than 20 % in IHC 0–1+ cases. In contrast to the above-stated findings, the survival outcome for another anti-PD-1 antibody, nivolumab, was not significantly different according to PD-L1 subgroup in melanoma patients [23]. Taken together, the predictive value of PD-L1 expression under treatment with PD-1/PD-L1 immune checkpoint inhibitors has not yet been fully established, and therefore further validation is strongly warranted through further studies.

Unfortunately, the IHC criteria for PD-L1 expression have not yet been standardized. Indeed, different definitions of positive PD-L1 expression have been used in the clinical trials conducted to date. In the CheckMate 017 study with NSCLC patients, OS and response rate were significantly better with nivolumab than with docetaxel, regardless of the PD-L1 expression level [17]. PD-L1 expression (of tumor cells only) was neither prognostic nor predictive of nivolumab efficacy in the study. A prospective study with pembrolizumab, KEYNOTE-010, confirmed the clinical usefulness of the tumor proportion score (PD-L1 expression in at least 1 % of tumor cells) [24]. Considering that patients with a higher tumor proportion score (≥ 50 %) had a significantly increased benefit compared to those with a lower score (≥ 1 %), further studies are required to determine the appropriate cutoff value of the proportion score. Furthermore, because previous studies reported marked intra-patient discordance and longitudinal heterogeneity of PD-L1 assays, rigorous validation with clinical trials are still needed [25]. Comprehensive incorporation with tumor-infiltrating cells [26], inflammatory gene signatures [27], or the immune microenvironment [28] will be helpful to improve patient identification. Currently, a blueprint

project to comprehensively compare various PD-L1 assay are ongoing by FDA and ASCO (Sholl et al. *Arch Pathol Lab Med* 2016), we can wait these results to answer this important question.

The main limitations of our study include its patient selection, small sample size, and imbalance of histologic type. Because we initially intended to analyze the PD-L1 expression in CD99 positive tumors, this study mainly enrolled pediatric STS, which could result in relatively younger median age of patients and longer survival outcome. Moreover, due to the small sample size and imbalance of histologic type between PD-L1 positive and negative groups, especially epithelioid sarcoma and mesenchymal chondrosarcoma, there could be a possibility of type I error. Therefore, our findings should be validated in an independent STS cohort and according to the response to PD-1/PD-L1 inhibitors in future clinical trials.

Conclusion

In conclusion, we have revealed PD-L1 expression in various STS of young population and demonstrated its independent negative prognostic role, thereby suggesting the PD-1/PD-L1 axis as a potential therapeutic target for the treatment of young STS patients.

Additional file

Additional file 1: Figure S1. Survival analyses according to PD-L1 expression in patients with localized disease. (A) Kaplan-Meier survival curves for recurrence-free survival (RFS). (B) Kaplan-Meier survival curves for overall survival (OS). (TIF 84 kb)

Abbreviations

CTLA-4, cytotoxic T-lymphocyte antigen 4; IHC, immunohistochemistry; OS, overall survival; PD1, programmed death 1; PD-L1, programmed death ligand 1; RFS, recurrence-free survival; TMA, tissue microarray

Acknowledgements

We thank Intae Park for his technical assistance.

Funding

This study was supported by a grant from the National R&D Program for Cancer Control, Ministry of Health and Welfare, Republic of Korea (Sun Young Rha, 1520190), and the National Research Foundation of Korea (NRF) grant funded by the Korean government (MSIP) (2015R1C1A2A01055617, Hyo Song Kim).

Availability of data and materials

The dataset supporting the conclusions of this article is available upon request from the corresponding author.

Authors' contributions

CK, EKK, SHK, HSK have made substantial contributions to concep and design of the study. CK, EKK, HJC, JWH, KHS, HH, KSK, YDC, SK, YHL, JSS, JBA, HCC, SHN, SYR, SHK, HSK carried out analysis and interpretation of data. CK, EKK, HJ, HJC, SHK, HSK have been involved in drafting the manuscript. All authors read and approved the final manuscript.

Competing interests

The authors declare that they have no competing interests.

Consent for publication

Not applicable.

Ethics approval and consent to participate

The study was approved by the institutional review board of Severance Hospital, Seoul, Korea.

Author details

¹Division of Medical Oncology, Department of Internal Medicine, Yonsei University College of Medicine, 134 Shinchondong, Seodaemun-gu, Seoul 03722, Korea. ²Department of Pathology, Yonsei University College of Medicine, Seoul, Korea. ³Oncology, Merck Sharp & Dohme, Seoul, Korea. ⁴Department of Pediatric Hemato-Oncology, Yonsei University College of Medicine, Seoul, Korea. ⁵Department of Orthopedic Surgery, Yonsei University College of Medicine, Seoul, Korea. ⁶Department of Surgery, Yonsei University College of Medicine, Seoul, Korea. ⁷Department of Urology, Yonsei University College of Medicine, Seoul, Korea. ⁸Department of Obstetrics and Gynecology, Yonsei University College of Medicine, Seoul, Korea. ⁹Department of Radiology, Yonsei University College of Medicine, Seoul, Korea. ¹⁰Medical Oncology, CHA Bundang Medical Center, CHA University, Seongnam, Korea. ¹¹Anatomic Pathology Reference Lab, Seegene Medical Foundation, Seoul 05548, Korea.

Received: 14 April 2016 Accepted: 24 June 2016

Published online: 08 July 2016

References

- Clark MA, Fisher C, Judson I, Thomas JM. Soft-tissue sarcomas in adults. *N Engl J Med*. 2005;353(7):701–11.
- Torre LA, Bray F, Siegel RL, Ferlay J, Lortet-Tieulent J, Jemal A. Global cancer statistics, 2012. *CA Cancer J Clin*. 2015;65(2):87–108.
- Judson I, Verweij J, Gelderblom H, Hartmann JT, Schoffski P, Blay JY, Kerst JM, Sufliarsky J, Whelan J, Hohenberger P, et al. Doxorubicin alone versus intensified doxorubicin plus ifosfamide for first-line treatment of advanced or metastatic soft-tissue sarcoma: a randomised controlled phase 3 trial. *Lancet Oncol*. 2014;15(4):415–23.
- Chen YB, Mu CY, Huang JA. Clinical significance of programmed death-1 ligand-1 expression in patients with non-small cell lung cancer: a 5-year follow-up study. *Tumori*. 2012;98(6):751–5.
- Madore J, Vilain RE, Menzies AM, Kakavand H, Wilmott JS, Hyman J, Yearley JH, Kefford RF, Thompson JF, Long GV, et al. PD-L1 expression in melanoma shows marked heterogeneity within and between patients: implications for anti-PD-1/PD-L1 clinical trials. *Pigment Cell Melanoma Res*. 2015;28(3):245–53.
- Ohigashi Y, Sho M, Yamada Y, Tsurui Y, Hamada K, Ikeda N, Mizuno T, Yoriki R, Kashizuka H, Yane K, et al. Clinical significance of programmed death-1 ligand-1 and programmed death-1 ligand-2 expression in human esophageal cancer. *Clin Cancer Res*. 2005;11(8):2947–53.
- Thompson RH, Dong H, Lohse CM, Leibovich BC, Blute ML, Cheville JC, Kwon ED. PD-1 is expressed by tumor-infiltrating immune cells and is associated with poor outcome for patients with renal cell carcinoma. *Clin Cancer Res*. 2007;13(6):1757–61.
- Zambo I, Vesely K. [WHO classification of tumours of soft tissue and bone 2013: the main changes compared to the 3rd edition]. *Cesk Patol*. 2014;50(2):64–70.
- Kim SH, Yang WI, Min YH, Ko YH, Yoon SO. The role of the polycomb repressive complex pathway in T and NK cell lymphoma: biological and prognostic implications. *Tumour Biol*. 2015;37(2):2037–47.
- Coley WB. II. Contribution to the knowledge of sarcoma. *Ann Surg*. 1891;14(3):199–220.
- Coley WB. The treatment of malignant tumors by repeated inoculations of erysipelas. With a report of ten original cases. *Clin Orthop Relat Res*. 1893;1991(262):3–11.
- Goorin AM, Delorey MJ, Lack EE, Gelber RD, Price K, Cassidy JR, Levey R, Tapper D, Jaffe N, Link M, et al. Prognostic significance of complete surgical resection of pulmonary metastases in patients with osteogenic sarcoma: analysis of 32 patients. *J Clin Oncol*. 1984;2(5):425–31.
- Linehan DC, Bowne WB, Lewis JJ. Immunotherapeutic approaches to sarcoma. *Semin Surg Oncol*. 1999;17(1):72–7.
- Arndt CA, Koshkina NV, Inwards CY, Hawkins DS, Krailo MD, Villaluna D, Anderson PM, Goorin AM, Blakely ML, Bernstein M, et al. Inhaled granulocyte-macrophage colony stimulating factor for first pulmonary recurrence of osteosarcoma: effects on disease-free survival and immunomodulation. A report from the Children's Oncology Group. *Clin Cancer Res*. 2010;16(15):4024–30.
- Kawaguchi S, Tsukahara T, Ida K, Kimura S, Murase M, Kano M, Emori M, Nagoya S, Kaya M, Torigoe T, et al. SYT-SSX breakpoint peptide vaccines in patients with synovial sarcoma: a study from the Japanese Musculoskeletal Oncology Group. *Cancer Sci*. 2012;103(9):1625–30.
- Maki RG, Jungbluth AA, Gnjatic S, Schwartz GK, D'Adamo DR, Keohan ML, Wagner MJ, Scheu K, Chiu R, Ritter E, et al. A pilot study of anti-CTLA4 antibody ipilimumab in patients with synovial sarcoma. *Sarcoma*. 2013;2013:168145.
- Brahmer J, Reckamp KL, Baas P, Crino L, Eberhardt WE, Poddubska E, Antonia S, Pluzanski A, Vokes EE, Holgado E, et al. Nivolumab versus docetaxel in advanced squamous-cell non-small-cell lung cancer. *N Engl J Med*. 2015;373(2):123–35.
- Robert C, Thomas L, Bondarenko I, O'Day S, Weber J, Garbe C, Lebbe C, Baurain JF, Testori A, Grob JJ, et al. Ipilimumab plus dacarbazine for previously untreated metastatic melanoma. *N Engl J Med*. 2011;364(26):2517–26.
- Mu CY, Huang JA, Chen Y, Chen C, Zhang XG. High expression of PD-L1 in lung cancer may contribute to poor prognosis and tumor cells immune escape through suppressing tumor infiltrating dendritic cells maturation. *Med Oncol*. 2011;28(3):682–8.
- Kim JW, Nam KH, Ahn SH, Park do J, Kim HH, Kim SH, Chang H, Lee JO, Kim YJ, Lee HS, et al. Prognostic implications of immunosuppressive protein expression in tumors as well as immune cell infiltration within the tumor microenvironment in gastric cancer. *Gastric Cancer*. 2016;19(1):42–52.
- Bang Y-J, Chung H-C, Shankaran V, Geva R, Virgil D, Catenacci T, Gupta S, Eder JP, Berger R, Gonzalez EJ, Ray A, Dolled-Filhart M, Emancipator K, Pathiraja K, Lunceford JK, Cheng JD, Koshiji M, Muro K. Relationship between PD-L1 expression and clinical outcomes in patients with advanced gastric cancer treated with the anti-PD-1 monoclonal antibody pembrolizumab (MK-3475) in KEYNOTE-012. *ASCO Annual Meeting Proceedings*. 2015;4001.
- Herbst RS, Soria JC, Kowanetz M, Fine GD, Hamid O, Gordon MS, Sosman JA, McDermott DF, Powderly JD, Gettinger SN, et al. Predictive correlates of response to the anti-PD-L1 antibody MPDL3280A in cancer patients. *Nature*. 2014;515(7528):563–7.
- Robert C, Long GV, Brady B, Dutriaux C, Maio M, Mortier L, Hassel JC, Rutkowski P, McNeil C, Kalinka-Warchoła E, et al. Nivolumab in previously untreated melanoma without BRAF mutation. *N Engl J Med*. 2015;372(4):320–30.
- Herbst RS, Baas P, Kim DW, Felip E, Perez-Gracia JL, Han JY, Molina J, Kim JH, Arvis CD, Ahn MJ, et al. Pembrolizumab versus docetaxel for previously treated, PD-L1-positive, advanced non-small-cell lung cancer (KEYNOTE-010): a randomised controlled trial. *Lancet*. 2015;387(10027):1540–50.
- Johnson DB, Lovly CM, Flavin M, Panageas KS, Ayers GD, Zhao Z, Iams WT, Colgan M, DeNoble S, Terry CR, et al. Impact of NRAS mutations for patients with advanced melanoma treated with immune therapies. *Cancer Immunol Res*. 2015;3(3):288–95.
- Schalper KA, Velcheti V, Carvajal D, Wimberly H, Brown J, Pusztai L, Rimm DL. In situ tumor PD-L1 mRNA expression is associated with increased TILs and better outcome in breast carcinomas. *Clin Cancer Res*. 2014;20(10):2773–82.
- Messina JL, Fenstermacher DA, Eschrich S, Qu X, Berglund AE, Lloyd MC, Schell MJ, Sondak VK, Weber JS, Mule JJ. 12-Chemokine gene signature identifies lymph node-like structures in melanoma: potential for patient selection for immunotherapy? *Sci Rep*. 2012;2:765.
- Gettinger S, Herbst RS. B7-H1/PD-1 blockade therapy in non-small cell lung cancer: current status and future direction. *Cancer J*. 2014;20(4):281–9.