

RESEARCH ARTICLE

Open Access

# $\alpha$ -Amylase inhibitor-1 gene from *Phaseolus vulgaris* expressed in *Coffea arabica* plants inhibits $\alpha$ -amylases from the coffee berry borer pest

Aulus EAD Barbosa<sup>1,2</sup>, Érika VS Albuquerque<sup>1</sup>, Maria CM Silva<sup>1</sup>, Djair SL Souza<sup>1</sup>, Osmundo B Oliveira-Neto<sup>1</sup>, Arnubio Valencia<sup>1,3,4</sup>, Thales L Rocha<sup>1</sup> and Maria F Grossi-de-Sa<sup>\*1,2,4</sup>

## Abstract

**Background:** Coffee is an important crop and is crucial to the economy of many developing countries, generating around US\$70 billion per year. There are 115 species in the *Coffea* genus, but only two, *C. arabica* and *C. canephora*, are commercially cultivated. Coffee plants are attacked by many pathogens and insect-pests, which affect not only the production of coffee but also its grain quality, reducing the commercial value of the product. The main insect-pest, the coffee berry borer (*Hypothenemus hampei*), is responsible for worldwide annual losses of around US\$500 million. The coffee berry borer exclusively damages the coffee berries, and it is mainly controlled by organochlorine insecticides that are both toxic and carcinogenic. Unfortunately, natural resistance in the genus *Coffea* to *H. hampei* has not been documented. To overcome these problems, biotechnological strategies can be used to introduce an  $\alpha$ -amylase inhibitor gene ( $\alpha$ -AI1), which confers resistance against the coffee berry borer insect-pest, into *C. arabica* plants.

**Results:** We transformed *C. arabica* with the  $\alpha$ -amylase inhibitor-1 gene ( $\alpha$ -AI1) from the common bean, *Phaseolus vulgaris*, under control of the seed-specific phytohemagglutinin promoter (PHA-L). The presence of the  $\alpha$ -AI1 gene in six regenerated transgenic T1 coffee plants was identified by PCR and Southern blotting. Immunoblotting and ELISA experiments using antibodies against  $\alpha$ -AI1 inhibitor showed a maximum  $\alpha$ -AI1 concentration of 0.29% in crude seed extracts. Inhibitory *in vitro* assays of the  $\alpha$ -AI1 protein against *H. hampei*  $\alpha$ -amylases in transgenic seed extracts showed up to 88% inhibition of enzyme activity.

**Conclusions:** This is the first report showing the production of transgenic coffee plants with the biotechnological potential to control the coffee berry borer, the most important insect-pest of crop coffee.

## Background

Coffee is one of the most valuable primary products in world trade, and its cultivation, processing, transportation and marketing provide employment for around 25 million people worldwide [1]. Furthermore, this culture is crucial to the economies of many developing countries, and its international trade reaches up to US\$70 billion per year [2]. World coffee production is around 7 million metric tons, and Brazil is the leading producer [3].

*Coffea arabica* is the main cultivated coffee species (70%) worldwide [4], and its production is commonly affected by different insect-pests. Among these pests, the

most damaging is the coffee berry borer (CBB), *Hypothenemus hampei* (Ferrari, 1867) (Coleoptera: Curculionidae). CBB attacks and feeds on coffee berries, decreasing the quality and the flavour of the grain coffee and causing world-wide monetary losses of around US\$500 million annually [5]. A major part of the insect life cycle is spent inside the coffee beans, making control very difficult [6]. Current methods used to control CBB are based on cultural, biological and predominantly chemical approaches. The use of the insecticide ENDOSULFAN is very widespread; however, CBB with high levels of resistance to ENDOSULFAN have already been detected and reported in New Caledonia [7]. In addition, of the 115 species in genus *Coffea* described, none have shown any natural

\* Correspondence: fatimasa@cenargen.embrapa.br

<sup>1</sup> EMBRAPA Recursos Genéticos e Biotecnologia, Brasília-DF, Brazil  
Full list of author information is available at the end of the article

resistance against CBB [8], making it unlikely that control of this insect can be achieved by plant breeding alone.

Biotechnology may be a promising alternative for *H. hampei* control. Several genes are potentially available for this purpose, including Bt toxins, digestive enzyme inhibitors, chitinases and lectins [9-15]. With respect to the enzyme inhibitor class, the expression of alpha-amylase inhibitors ( $\alpha$ -AI) from both scarlet runner bean (*Phaseolus coccineus*) and common bean (*Phaseolus vulgaris*) has been shown to be effective in transgenic plants, showing high protection against seed weevils in pea [16,17], azuki bean [18], chickpea [19,20], and cowpea [21]. With pea, complete protection against the pea weevil *Bruchus pisorum* was shown under field conditions [22]. In all of these experiments, expression of the  $\alpha$ -AI coding region was driven by the seed-specific promoter of *P. vulgaris* phytohemagglutinin. Interestingly, both amylase inhibitors,  $\alpha$ -AI1 from *P. vulgaris* and  $\alpha$ -AI1-like amylase inhibitor from wild accessions of scarlet runner bean have shown to inhibit the  $\alpha$ -amylases from *H. hampei* [23,24].

Here we describe the introduction of an expression cassette carrying the  $\alpha$ -AI1 gene under phytohemagglutinin seed-specific promoter control in *C. arabica* plants using biolistics, followed by regeneration of coffee plants. According to the molecular characterisation and *in vitro* assays, extracts from the transgenic plants with a relatively high level of expressed  $\alpha$ -AI1 protein are active against coffee berry borer  $\alpha$ -amylases, indicating that this transformation event with  $\alpha$ -AI1 represents a promising method that can be applied to the control of CBB.

## Results and discussion

### Transformation of *C. arabica* plants

*C. arabica* plants were transformed using particle bombardment with vector pBIN19 $\alpha$ -AI1. After 8 months of *in vitro* culture and selection of bombarded *C. arabica* calli had been bombarded (Figures 1, 2A, B and 2C), 26 plantlets were obtained. All displayed normal subsequent development (Figures 2D and 2E). Six positive plants for  $\alpha$ -AI1 gene were maintained in the greenhouse (Figure 2F) and after two years the first flowers appeared, followed by fruit development (Figures 2G and 2H), like occurs in non transformed coffee plants. Out of the six plants, three were not able to produce fruits after three years of greenhouse cultivation. Sterility in transgenic

plants may be caused by somaclonal variation, generated as a result of tissue culture or caused by the position of the transgene in the genome. Similar observations were found in other transgenic plants such as soybean and rice [25].

Transgenic seeds of T0 plants numbered 1, 2 and 3 were collected and used for molecular characterisation, an *in vitro* inhibitory assay, and the production of T1 plants from plants 2 and 3. The coffee beans showed a normal level of germination, ranging from 40% (T1 from plant 3 of T0 generation) to 70% (T1 from plant 2 of T0 generation), in agreement with the data shown by Valio [26], which indicates that the expression of  $\alpha$ -AI1 did not interfere with germination and seedling growth (Figure 2I). The genomic DNA from all eleven germinated T1 plants was evaluated using PCR.

### Molecular characterisation of the transformed plants

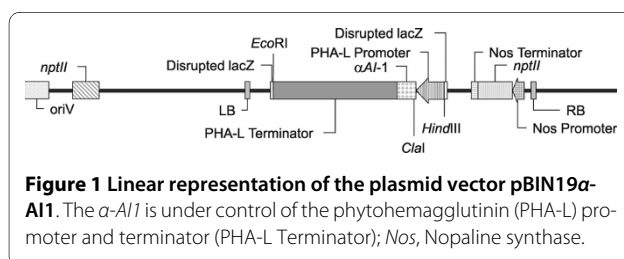
Six PCR positive coffee plants (T0) were obtained after biolistic transformation, showing the presence of both *nptII* and  $\alpha$ -AI1 genes (Figures 3A and 3B). The transformation efficiency obtained in this work was 23.1% (6 positive: 20 negative plants). Although generation of spontaneous kanamycin resistance is very well documented [27], the low efficiency may also be a consequence of unstable genome insertion.

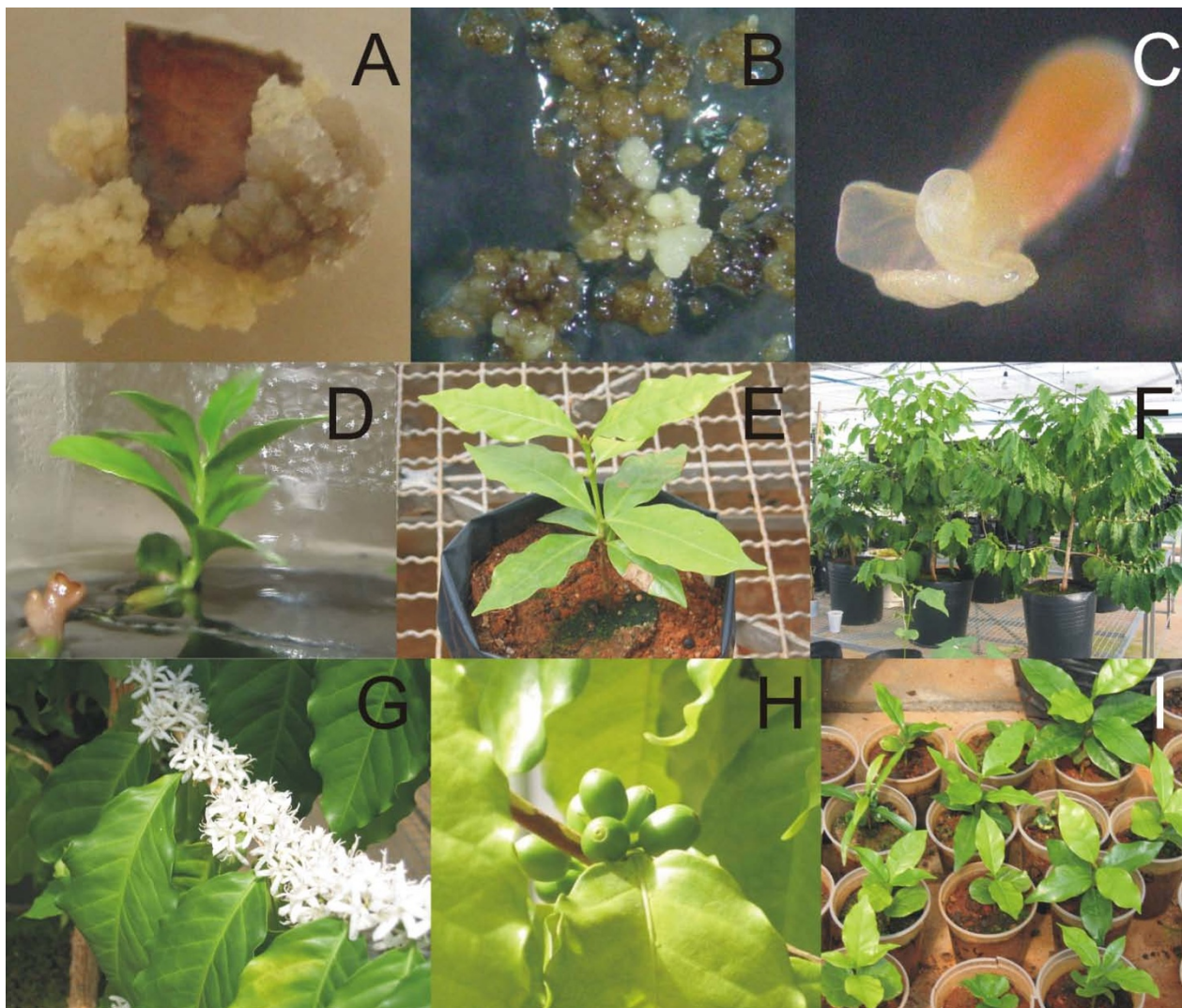
The stable integration of the  $\alpha$ -AI1 gene into the coffee genome was confirmed by Southern blot analysis. The  $\alpha$ -AI1 probe successfully hybridised with genomic DNA samples from the six positive T0 plants, confirming the PCR results (Figure 4).

As for the T1 plants obtained from seeds of the primary transgenic coffee plants (T0), eleven individuals were obtained and evaluated by PCR. All of them (100%) were positive for the *nptII* and  $\alpha$ -AI1 genes in these experiments (Figures 3C and 3D), indicating that the genes were transferred by inheritance in transgenic *C. arabica*. Normally, a classic proportion of three transgenic plants for one non-transgenic plant (3:1) is expected for *C. arabica* because it is an allotetraploid crop presenting a regular bivalent pairing of homologous chromosomes [28]. In our results we did not observe a 3:1 proportion, possibly due to the low number of T1 individuals analysed. Alternatively, this proportion of positive T1 plants could be generated by a T0 plant with more than one insertion.

### Analysis of expressed $\alpha$ -AI1 in transgenic coffee seeds

To examine  $\alpha$ -AI1 protein expression in coffee beans of T0 plants, crude extracts from transformed seeds were analysed using SDS-PAGE and immunoblots (Figures 5A and 3B, respectively). The level of expression was evaluated by ELISA assay (Table 1). The immunoblot showed three positive bands of 19, 17 and 16 kDa that were not present in the extracts of untransformed plants and cor-



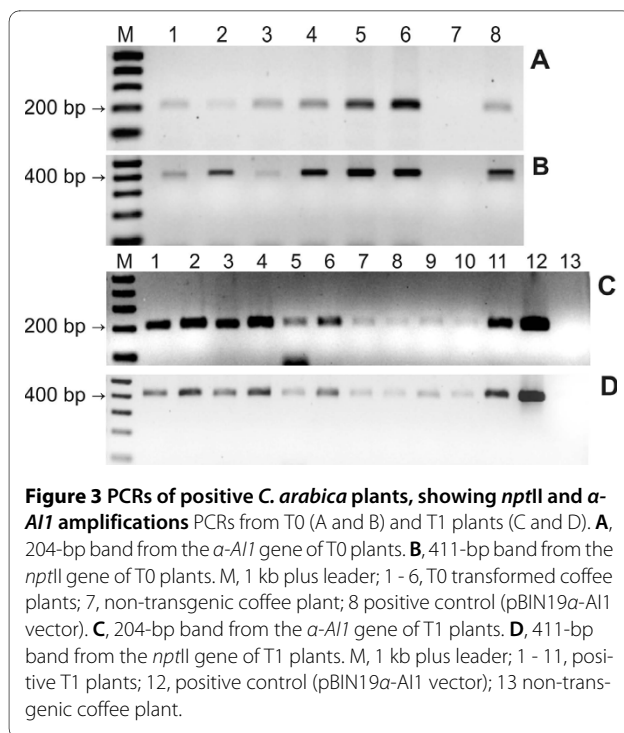


**Figure 2** *Coffea arabica* transformation steps. A) Friable callus used in the transformation. (B) Callus after bombardment under kanamycin selection. (C) Regenerating embryo. (D) Small coffee plant under kanamycin selection. (E) Plant transferred to the greenhouse. (F) Coffee plants positive for the  $\alpha$ -A11 gene. (G) Flowers of the transformed coffee plant. (H) Transgenic fruits, 10 weeks after flowering. (I) T1 generation from plant 3.

responded to the protein found in *P. vulgaris* seed extracts (Figure 5B lanes 1, 2, 3 and 4). In the common bean, amylase inhibitor-1 is synthesised as a preproprotein, and in its mature form, it consists of two polypeptides of 19 and 14 kDa [29]. Differential processing of the polypeptide and glycan portions of the protein results in a series of bands on immunoblots, especially in transgenic seeds of different species where processing events may be different. For example, as many as 11 different immunoreactive polypeptides were found in tobacco seeds [30]. In transgenic peas expressing  $\alpha$ -A11, three polypeptides were visualised on immunoblots [17]. The altered molecular mass of  $\alpha$ -A11 in the different transgenic plants may have occurred due to a variation in the extent of glycosylation or the processing of the glycans [31]. Even in *P. vulgaris* seeds, the subunits  $\alpha$  and  $\beta$  of  $\alpha$ -A11 are not always

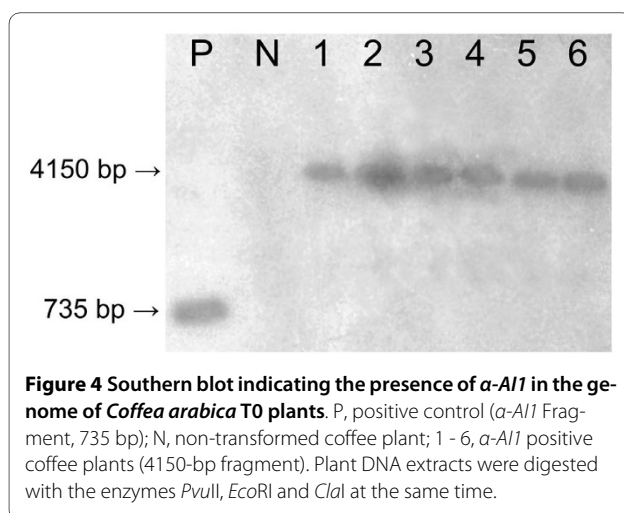
glycosylated in the same way, generating polypeptide heterogeneity [32]. Unexpectedly, differences in glycosylation between the inhibitor isolated from the common bean and from transgenic peas expressing  $\alpha$ -A11 resulted in differences in immunogenic properties between the two proteins. The protein made in peas caused immunological responses and inflammation in mice [33]. Nevertheless, no difference in immunogenicity was observed in mice fed with transgenic chickpeas expressing  $\alpha$ -A11 [33]. As a consequence, it is difficult to predict if similar immunogenic alterations will occur in an inhibitor made by transgenic coffee plants.

Using ELISA assays, we detected different levels of recombinantly expressed  $\alpha$ -A11 in the different transformed plants (Table 1). The highest level was found in plant 2 (Table 1), in which  $\alpha$ -A11 comprised 0.29% of the



total seed protein extract. These variable protein concentration levels in transgenic plants may be explained by several factors, such as somaclonal variation [34,35], mutations in the inserted gene [36], genetic alterations caused by tissue culture [37], different copy numbers of the inserted transgene [25], or by the position of the transgene inside the plant genome [25]. In transgenic chickpeas and peas seeds, higher  $\alpha$ -A1I expression levels were observed: 1.0-3.5% in peas [17] and 4.2% in chickpea [19] or 0.72% in chickpea [17,20].

The phytohemagglutinin (PHA-L) promoter used in this work was cloned from the *P. vulgaris* genome and first analysed in tobacco. The promoter showed similar



seed-specific expression, in both, tobacco and beans [38]. It is important to emphasise the  $\alpha$ -A1I coffee seed-specific expression driven by this promoter, as it decreases the chance of affecting non-target insects. Because pollinators can increase coffee yields by 20.8% and decrease the frequency of pea berries by 27%, the protection of non-target insects is fundamental for coffee crop production [39].

#### Inhibition of *H. hampei* $\alpha$ -amylases by $\alpha$ -A1I expressed in transgenic coffee seeds

*In vivo* insect assays described in other works exhibited mortality ranging from 89.8% to 100% [17,20], depending on the inhibitor concentration in each tested plant. The high levels of amylase inhibitor may be related to the fact that in some studies [17], seeds from homozygous plants were used. However, the coffee plants used here were hemizygous. Valencia *et al.* (2000) showed that an inhibitor from common bean inhibits the *H. hampei* gut amylases up to 95%. We tested the effect of extracts from transformed seeds, and the level of inhibition of amylase activity correlates with the level of inhibitor in the common bean (*P. vulgaris*) seeds (Table 1). The plant with the highest amount of  $\alpha$ -A1I inhibitor (Plant 2) exhibited the strongest *H. hampei*  $\alpha$ -amylases inhibition, and the inhibition levels reached by each transgenic plant were directly related to the  $\alpha$ -A1I concentration (Figure 6).

#### Conclusions

The data presented here lead to several important conclusions. From PCR and Southern blot analysis, it was possible to conclude that the  $\alpha$ -*A1I* gene, fused under control of the phytohemagglutinin promoter and terminator, was inserted into the *C. arabica* genome. Both the  $\alpha$ -A1I expression and inhibitor activity were confirmed in coffee seeds. Additional tests will be necessary not only to confirm the *in vivo* efficiency of these transgenic plants against *H. hampei*, but also to analyse the inheritance of the inserted genes through different generations until attainment of a fully homozygous progeny (T3). Moreover, the presence of *nptII* will be evaluated to identify if this gene was inserted in any other locus in the genome, allowing its separation from  $\alpha$ -*A1I* through conventional breeding. Finally, considering the long life cycle of the coffee plant, we consider these transformation events a crucial step that might control *H. hampei*, the main insect pest in coffee.

#### Methods

##### Plasmid vector construction

Plasmid vector pBIN19 $\alpha$ AI-1 (16.6 kb) was constructed using the fragment of a pTA3 plasmid containing the  $\alpha$ -amylase inhibitor-1 ( $\alpha$ -*A1I*) gene flanked by a phytohemagglutinin (PHA-L) promoter and terminator [29]. The

**Table 1: Concentration of  $\alpha$ -AI1 in seed protein extracts from three different transgenic coffee plants and *H. hampei*  $\alpha$ -amylase inhibition level using  $\alpha$ -AI1 expressed in these coffee plants.**

	$\alpha$ -AI1 concentration (%)	Inhibition of <i>H. hampei</i> $\alpha$ -amylase
Plant 1	0.14 $\pm$ 0.03%	54.38 $\pm$ 20.13%
Plant 2	0.29 $\pm$ 0.02%	88.86 $\pm$ 14.34%
Plant 3	0.03 $\pm$ 0.01%	20.61 $\pm$ 13.22%
Negative plant	0.02 $\pm$ 0.01%	0.94 $\pm$ 12.32%

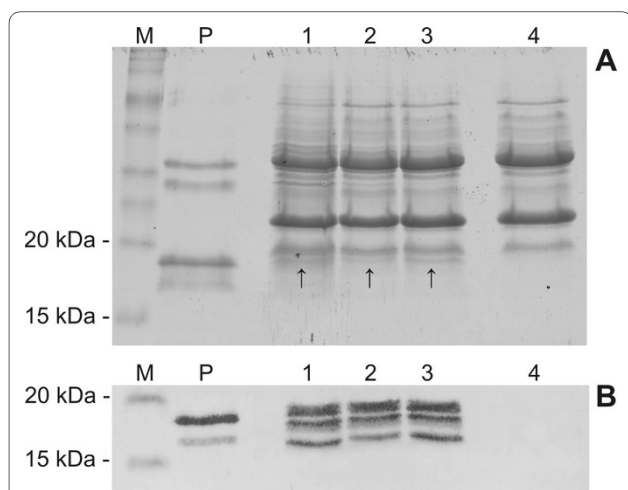
One unit of *H. hampei*  $\alpha$ -amylase activity was utilised in the inhibition assay.

$\alpha$ -AI1 expression cassette of pTA3 was digested with *Hin*-*d*III and subcloned in the pBIN19 vector [40] using the same restriction site (Figure 1). The PHA-L promoter is seed-specific [38], driving the  $\alpha$ -AI1 gene expression into the type of tissue attacked by *H. hampei*.

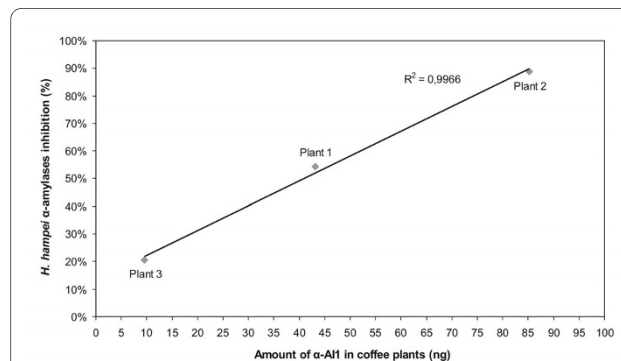
#### *Coffea arabica* genetic transformation through bombardment

*Coffea arabica* cv Catuaí Vermelho plants were transformed by bombardment of embryogenic callus, according to the procedures described by Albuquerque *et al.* (2009) [41] and the following details. Explants were obtained from coffee leaf fragments cultivated in C medium [42] modified with 20  $\mu$ M 2,4-D (C20 medium). After one month of incubation in dark conditions, the produced calli were transferred to fresh medium and cultivated for five additional months. Seven days before the

bombardment, embryogenic calli were dispersed over a 0.45  $\mu$ m Membrane filter in Petri dishes containing C medium with 10  $\mu$ M 2,4-D (C10 medium). The membranes carrying calli were transferred to C10 medium that contained mannitol (0.5 M) and phytigel (8 g/L) 24 hours before bombardment. After this osmotic treatment, calli were bombarded with tungsten microparticles coated with vector pBIN19 $\alpha$ -AI1 [29]. Two weeks after transformation, calli were transferred to C10 medium containing the selective agent kanamycin (200 mg/L), and subsequently subcultured in C10 medium containing kanamycin at 300 mg/L and 400 mg/L at one week intervals. Selected calli and somatic embryos were then subcultivated until embryos reached the torpedo stage. Fully developed embryos were cultivated in WPM medium until they become plantlets. Rooted individuals were acclimated and grown in a greenhouse (temperature 27°C  $\pm$  3, humidity 75%  $\pm$  10) for two years, until the first fruits appeared. The first seeds were used to produce the T1 generation. Two T0 lines (Plants 2 and 3) were selected and ten seeds of each one were planted and maintained in the greenhouse until germination.



**Figure 5  $\alpha$ -AI1 expression in transgenic coffee beans from T0 plants. A.** SDS-Polyacrylamide gel (15%) stained with Coomassie Brilliant Blue. M, Benchmark™ prestained protein ladder (Invitrogen); P, purified  $\alpha$ -AI1 from *Phaseolus vulgaris* seeds; 1-3, total seed protein extract from transgenic coffee plants. The arrows indicate possible expressed  $\alpha$ -AI1; 4, total seed protein extract of non-transgenic coffee plant. **B.** Western blot. M, Benchmark™ prestained protein ladder (Invitrogen); P, purified  $\alpha$ -AI1 from *Phaseolus vulgaris* seeds; 1-3, total seed protein extract from transgenic coffee plants; 4, total seed protein extract of the non-transgenic coffee plant.



**Figure 6 Comparison between the amount of  $\alpha$ -AI1 in coffee transgenic plants and the inhibition rate of *H. hampei*  $\alpha$ -amylases measured by DNS assay.** In the DNS assay, 30  $\mu$ g of the total seed protein extract was used, and the  $\alpha$ -AI1 quantity in these extracts was measured using ELISA.

### Identification of positive plants through PCR

DNA from the T0 and T1 coffee lines were extracted using the CTAB method modified with the addition of 2% PVP and 2% sodium metabisulfite [43]. The extractions were quantified in a NanoDrop™ spectrophotometer ND-1000 (Thermo Scientific). Before the PCR experiments, 2 µg of DNA from transgenic plants were linearised with the *EcoRI* restriction enzyme to facilitate the primers' alignment. The presence of the kanamycin resistance (*nptII* - 411 bp) and  $\alpha$ -*AII* genes (204 bp) were detected using the respective primers: *nptII* forward (5'-GAGGC-TATTCGGCTATGACTG-3'), *nptII* reverse (5'-TCGA-CAAGACCGGCTTCCATC-3'),  $\alpha$ -*AII* forward (5'-GCCTTGGGATGTACACGACT-3') and  $\alpha$ -*AII* reverse (5'-CTCCATTGATAAGCCCCTGA-3'). Both amplification reactions were carried out with 0.6 µg of digested DNA and an initial denaturation at 94°C for 5 min, followed by 30 cycles of denaturation at 94°C for 1 min, annealing at 60°C for 1 min and extension at 72°C for 30 seconds, and a final extension for 10 min at 72°C. DNA from a non-transgenic *C. arabica* plant was used as a negative control, while the pBIN19 $\alpha$ -*AII* vector served as the positive control. PCR fragments were analysed by electrophoresis on a 1.0% agarose gel stained with ethidium bromide [44]. Eleven plants from T1 generation were evaluated using the same methodology.

### Evaluation of integrated DNA through Southern blot

The Southern blot experiment was carried out with 20 µg of DNA from PCR positive plants digested with the following three restriction enzymes at the same time: *PvuII*, *EcoRI* and *Clal*. The enzyme *Clal* cut only at the beginning of the  $\alpha$ -*AII* gene (nucleotide 86) and the enzyme *EcoRI* cut only at the end of the phytohemagglutinin terminator, releasing a DNA fragment with 4150 bp. The *PvuII* enzyme has no corresponding restriction site inside of the vector sequence. An  $\alpha$ -*AII* fragment excised from the pBIN19 $\alpha$ -*AII* vector, using *HindIII* enzyme, was used as a positive control, and DNA of a non-transformed coffee plant was used as a negative control. The digested samples were submitted to electrophoresis on a 0.8% agarose gel and transferred by capillarity to a Hybond-N membrane (Amersham Biosciences). The probe was constructed using an  $\alpha$ -*AII* fragment radioactively labelled with the Ready-To-Go™ DNA Labeling Beads kit and [ $\alpha^{32}$ P] dCTP, both from GE Healthcare. Pre-hybridisation and hybridisation were performed as described by [44].

### Detection of expressed $\alpha$ -AI-1 in seeds of *Coffea arabica*

The  $\alpha$ -*AII* expression levels in the coffee beans was analysed by SDS-PAGE and western blot [45]. Untransformed and transformed coffee beans (T0) were powdered by grinding the coffee seeds with the use of liquid N<sub>2</sub>. Pro-

teins from the seed powder were extracted at 4°C with four volumes of 150 mM succinic acid buffer pH 5.0, containing 60 mM NaCl, 20 mM CaCl<sub>2</sub> and 10 mM sodium metabisulfite. The extract was slowly agitated for 60 min at 4°C and centrifuged at 10,000 × *g* for 20 min, and the supernatant was transferred to new Eppendorf tube. Protein extracts were quantified by the Bradford protein assay (Bio-Rad) according to the manufacturer's instructions. Five micrograms of protein from each transformed plant was separated using 15% SDS-PAGE (20 mA, 90 min). About 400 ng of semi-purified  $\alpha$ -*AII* from *P. vulgaris* was used as a positive control, and 5 µg of seed protein extract from the untransformed coffee plant used as a negative control. Another SDS-PAGE was run with 10 µg of protein extract and stained with Coomassie Blue [46]. Proteins of the first SDS-PAGE were transferred to a nitrocellulose membrane (Hybond-C Extra, Amersham Biosciences) using Trans-Blot® SD Semi-Dry (Bio-Rad), following the manufacturer's instructions. After transfer to the nitrocellulose membrane, the membrane was blocked with a TBS buffer containing 3% BSA and then incubated with an anti- $\alpha$ -*AII* polyclonal antibody produced in rabbit. Final detection of the  $\alpha$ -*AII* protein was made with an Anti-Rabbit IgG conjugate to alkaline phosphatase (SIGMA), and the reactive proteins in the nitrocellulose membrane were revealed with a Kit AP Conjugate Substrate (Bio-Rad), according to the manufacturer's instructions.

### Quantification of expressed $\alpha$ -AI1 using ELISA

$\alpha$ -*AII* was quantified by ELISA assays [47] with 2.5 µg of the seed protein from each one of the 3 transformed coffee plants (T0) and one from the non-transgenic coffee plant. Assays were performed in triplicate on a 96-well Eia/Ria microplate (Sigma-Aldrich) with the same antibodies previously used in the Western blot analysis.

### *Hyphotenemus hampei* $\alpha$ -amylase inhibition assay

The inhibition of *H. hampei*  $\alpha$ -amylases by the  $\alpha$ -*AII* expressed in transgenic *C. arabica* plants (T0) was measured using the dinitrosalicylic acid (DNS) method, adapted from Bernfeld [48], using 1% soluble starch as a substrate. A protein extract from *H. hampei* adult insects was prepared with 150 mM succinic acid buffer pH 5.0, containing 60 mM NaCl, 20 mM CaCl<sub>2</sub> and 10 mM sodium metabisulfite. Coffee seed protein extracts were made using the same buffer solution. The coffee protein extract was dialysed against the extraction buffer using a Mini Dialysis Kit (1 kDa cut-off) (Amersham Biosciences) to eliminate soluble sugars. The reaction was run using one unit of *H. hampei*  $\alpha$ -amylase and 30 µg of coffee seed protein extracts. Assays were carried out in triplicate.

#### Authors' contributions

AEADB performed the characterisation of transformed plants and wrote the manuscript. EVSA carried out the plant transformation experiment. MCS contributed to the ELISA experiments. AV, DLS, OBON and TLR revised the manuscript. MFGS conceived and coordinated the study, performed experiments, and helped write and correct the manuscript. All authors have read and approved the final manuscript.

#### Acknowledgements

This work was supported by Brazilian grants from EMBRAPA, UCB, CNPq, CAPES and Consócio Brasileiro de Pesquisa e Desenvolvimento do Café. We thank Maarten Chrispeels for his valuable suggestions and also Berin Bolton for the English corrections to the manuscript. We also thank lab' colleagues for valuable suggestions.

#### Author Details

<sup>1</sup>EMBRAPA Recursos Genéticos e Biotecnologia, Brasília-DF, Brazil, <sup>2</sup>Pós-graduação em Ciências Genômicas e Biotecnologia, UCB, Brasília-DF, Brazil, <sup>3</sup>Facultad de Ciencias Agropecuarias, Universidad de Caldas, Manizales, Colombia and <sup>4</sup>Dept de Biologia Celular, Universidade de Brasília, Brasília-DF, Brazil

Received: 8 December 2009 Accepted: 17 June 2010

Published: 17 June 2010

#### References

1. Watson K, Achinelli ML: **Context and contingency: the coffee crisis for conventional small-scale coffee farmers in Brazil.** *The Geographical Journal* 2008, **174**(3):223-234.
2. Mitchell K, Wells P: **The fair-trade Foundation: Spilling the beans on the coffee trade.** 2002 [<http://www.fairtrade.org.uk/>].
3. ABIC: **Produção e exportação mundial de café.** 2009 [[http://abic.com.br/estat\\_exporta\\_ppaises.html](http://abic.com.br/estat_exporta_ppaises.html)]. MDIC e SECEX, OIC
4. International Coffee Organization: **Trade Statistics.** 2009 [<http://www.ico.org/>].
5. Pava-Ripoll M, Posada FJ, Momend B, Wang C, Leger RS: **Increased pathogenicity against coffee berry borer, *Hypothenemus hampei* (Coleoptera: Curculionidae) by *Metarhizium anisopliae* expressing the scorpion toxin (AaT) gene.** *Journal of Invertebrate Pathology* 2008, **99**:220-226.
6. Damon A: **A review of the biology and control of the coffee berry borer, *Hypothenemus hampei*.** *Bulletin of Entomological Research* 2000, **90**:453-465.
7. Brun L-O, Marcillaud C, Suckling DM: **Endosulfan Resistance in *Hypothenemus hampei* (Coleoptera: Scolytidae) in New Caledonia.** *Journal of Economic Entomology* 1989, **82**:1311-1316.
8. Damon A: **A review of the biology and control of the coffee berry borer, *Hypothenemus hampei* (Coleoptera: Scolytidae).** *Bulletin of Entomological Research* 2000, **90**(6):453-465.
9. Bertrand B, Guyot B, Anthony F, Lashermes P: **Impact of the *Coffea canephora* gene introgression on beverage quality of *C. arabica*.** *Theoretical and Applied Genetics* 2003, **107**:387-394.
10. Carlini CR, Grossi-de-Sa MF: **Plant toxic proteins with insecticidal properties. A review on their potentialities as bioinsecticides.** *Toxicon* 2002, **40**:1515-1539.
11. Bishop JG, Dean AM, Mitchell-Olds T: **Rapid evolution in plant chitinases: Molecular targets of selection in plant-pathogen coevolution.** *PNAS* 2000, **97**:5322-5327.
12. Sales MP, Gerhardt IR, Grossi-de-Sa MF, Xavier-Filho J: **Do Legume Storage Proteins Play a Role in Defending Seeds against Bruchids?** *Plant Physiology* 2000, **124**:515-522.
13. Bellincampi D, Camardella L, Delcour JA, Desseaux V, D'Ovidio R, Durand A, Elliot G, Gebruers K, Giovane A, Juge N, et al.: **Potential physiological role of plant glycosidase inhibitors.** *Biochimica et Biophysica Acta* 2004, **1696**:265-274.
14. Haq SK, Atif SM, Khan RH: **Protein proteinase inhibitor genes in combat against insects, pests, and pathogens: natural and engineered phytoprotection.** *Archives of Biochemistry and Biophysics* 2004, **431**:145-159.
15. de Azevedo Pereira R, Nogueira Batista JA, da Silva MC, Brillhante de Oliveira Neto O, Zangrando Figueira EL, Valencia Jimenez A, Grossi-de-Sa MF: **An alpha-amylase inhibitor gene from *Phaseolus coccineus* encodes a protein with potential for control of coffee berry borer (*Hypothenemus hampei*).** *Phytochemistry* 2006, **67**(18):2009-2016.
16. Shade RE, Schroeder HE, Pueyo JJ, Tabe LM, Murdock LL, Higgins TJV, Chrispeels MJ: **Transgenic Pea-seeds expressing the alpha-amylase inhibitor of the common bean are resistant to bruchid beetles.** *Bio-Technology* 1994, **12**(8):793-796.
17. Schroeder HE, Gollasch S, Moore A, Tabe LM, Craig S, Hardie DC, Chrispeels MJ, Spencer D, Higgins TJV: **Bean alpha-Amylase Inhibitor Confers Resistance to the Pea Weevil (*Bruchus pisorum*) in Transgenic Peas (*Pisum sativum*).** *Plant Physiology* 1995, **107**:1233-1231.
18. Ishimoto M, Sato T, Chrispeels MJ, Kitamura K: **Bruchid resistance of transgenic azuki bean expressing seed alpha-amylase inhibitor of common bean.** *Entomol Exp Appl* 1996, **79**(3):309-315.
19. Sarmah BK, Moore A, Tate W, Molvig L, Morton RL, Rees DP, Chiaiese P, Chrispeels MJ, Tabe LM, Higgins TJV: **Transgenic chickpea seeds expressing high levels of a bean alpha-amylase inhibitor.** *Mol Breed* 2004, **14**(1):73-82.
20. Ignacimuthu S, Prakash S: **Agrobacterium-mediated transformation of chickpea with alpha-amylase inhibitor gene for insect resistance.** *Journal of biosciences* 2006, **31**(3):339-345.
21. Solleti SK, Bakshi S, Purkayastha J, Panda SK, Sahoo L: **Transgenic cowpea (*Vigna unguiculata*) seeds expressing a bean alpha-amylase inhibitor 1 confer resistance to storage pests, bruchid beetles.** *Plant Cell Rep* 2008, **27**(12):1841-1850.
22. Morton RL, Schroeder HE, Bateman KS, Chrispeels MJ, Armstrong E, Higgins TJV: **Bean alpha-amylase inhibitor 1 in transgenic peas (*Pisum sativum*) provides complete protection from pea weevil (*Bruchus pisorum*) under field conditions.** *Proc Natl Acad Sci USA* 2000, **97**(8):3820-3825.
23. Valencia A, Bustillo AE, Ossa GE, Chrispeels MJ: **Alpha-amylases of the coffee berry borer (*Hypothenemus hampei*) and their inhibition by two plant amylase inhibitors.** *Insect Biochemistry and Molecular Biology* 2000, **30**:207-213.
24. Valencia-Jimenez A, Arboleda Valencia JW, Grossi-De-Sa MF: **Activity of alpha-amylase inhibitors from *Phaseolus coccineus* on digestive alpha-amylases of the coffee berry borer.** *J Agric Food Chem* 2008, **56**(7):2315-2320.
25. Bhat SR, Srinivasan S: **Molecular and genetic analyses of transgenic plants: Considerations and approaches.** *Plant Science* 2002, **163**:673-681.
26. Valio IFM: **Germination of coffee seeds (*Coffea arabica* L. CV Mundo Novo).** *Journal of Experimental Botany* 1976, **27**(5):983-991.
27. Carrer H, Hockenberry TN, Svab Z, Maliga P: **Kanamycin resistance as a selectable marker for plastid transformation in tobacco.** *Molecular and General Genetics* 1993, **241**:49-56.
28. Lashermes P, Paczek V, Trouslot P, Combes MC, Couturon E, Charrier A: **Single-locus inheritance in the allotetraploid *Coffea arabica* L. and interspecific hybrid *C. arabica* x *C. canephora*.** *The Journal of Heredity* 2000, **91**(1):81-85.
29. Moreno J, Chrispeels MJ: **A lectin gene encodes the alpha-amylase inhibitor of the common bean.** *Proc Natl Acad Sci USA* 1989, **86**(20):7885-7889.
30. Altabella T, Chrispeels MJ: **Tobacco plants transformed with the Bean *aai* gene express an inhibitor of insect alpha-amylase in their seeds.** *Plant Physiology* 1990, **93**:805-810.
31. Obiro WC, Zhang T, Jiang B: **The nutraceutical role of the *Phaseolus vulgaris* alpha-amylase inhibitor.** *The British Journal of Nutrition* 2008, **100**(1):1-12.
32. Sawada S, Takeda Y, Tashiro M: **Primary structures of alpha- and beta-subunits of alpha-amylase inhibitors from seeds of three cultivars of *Phaseolus* beans.** *Journal of Protein Chemistry* 2002, **21**(1):9-17.
33. Prescott VE, Campbell PM, Moore A, Mattes J, Rothenberg ME, Foster PS, Higgins TJ, Hogan SP: **Transgenic expression of bean alpha-amylase inhibitor in peas results in altered structure and immunogenicity.** *J Agric Food Chem* 2005, **53**(23):9023-9030.
34. Larkin PJ, Scowcroft WR: **Somaclonal Variation - a novel source of variability from cell-cultures for plant improvement.** *Theoretical and Applied Genetics* 1981, **60**(4):197-214.
35. Jain SM: **Tissue culture-derived variation in crop improvement.** Kluwer Academic Publ; 2001:153-166.

36. Dai SH, Zheng P, Marmey P, Zhang SP, Tian WZ, Chen SY, Beachy RN, Fauquet C: **Comparative analysis of transgenic rice plants obtained by *Agrobacterium*-mediated transformation and particle bombardment.** *Mol Breed* 2001, **7**(1):25-33.
37. Phillips RL, Kaeppeler SM, Olhofs P: **Genetic instability of plant-tissue cultures - breakdown of normal controls.** *Proc Natl Acad Sci USA* 1994, **91**(12):5222-5226.
38. Voelker T, Sturm AJ, Chrispeels M: **Differences in expression between two seed lectin alleles obtained from normal and lectin-deficient beans are maintained in transgenic tobacco.** *The EMBO Journal* 1987, **6**(12):3571-3577.
39. Ricketts TH, Daily GC, Ehrlich PR, Michener CD: **Economic value of tropical forest to coffee production.** *Proc Natl Acad Sci USA* 2004, **101**(34):12579-12582.
40. Hoekema A, Hirsch PR, Hooykaas PJJ, Schilperoort RA: **A binary plant vector strategy based on separation of vir- and T-region of the *Agrobacterium tumefaciens* Ti-plasmid.** *Nature* 1983, **303**:179-180.
41. Albuquerque E, Cunha W, Barbosa A, Costa P, Teixeira J, Vianna G, Cabral G, Fernandez D, Grossi-de-Sa M: **Transgenic coffee fruits from *Coffea arabica* genetically modified by bombardment.** *In Vitro Cellular & Developmental Biology - Plant* 2009, **45**:532-539.
42. Boxtel JV, Berthouly M: **High frequency somatic embryogenesis from coffee leaves: Factors influencing embryogenesis, and subsequent proliferation and regeneration in liquid medium.** *Plant Cell Tissue and Organ Culture* 1996, **44**:7-17.
43. Doyle JJ, Doyle JL: **A rapid DNA isolation procedure for small quantities of fresh leaf tissue.** *Phytochemical Bulletin* 1987, **19**:11-15.
44. Sambrook J, Russell DW: **Molecular Cloning a Laboratory Manual.** New York: Cold Spring Harbor Laboratory Press; 2001.
45. Burnette WN: **"Western blotting": electrophoretic transfer of proteins from sodium dodecyl sulfate--polyacrylamide gels to unmodified nitrocellulose and radiographic detection with antibody and radioiodinated protein A.** *Analytical biochemistry* 1981, **112**(2):195-203.
46. Reisner AH, Nemes P, Bucholtz C: **The use of Coomassie Brilliant Blue G250 perchloric acid solution for staining in electrophoresis and isoelectric focusing on polyacrylamide gels.** *Analytical Biochemistry* 1975, **64**:509-516.
47. Engvall E, Perlmann P: **Enzyme-linked immunosorbent assay (ELISA). Quantitative assay of immunoglobulin G.** *Immunochemistry* 1971, **8**(9):871-874.
48. Bernfeld P: **Amylases, alpha and beta.** *Methods in Enzymology* 1955, **1**:149-158.

doi: 10.1186/1472-6750-10-44

**Cite this article as:** Barbosa et al.,  $\beta$ -Amylase inhibitor-1 gene from *Phaseolus vulgaris* expressed in *Coffea arabica* plants inhibits  $\beta$ -amylases from the coffee berry borer pest *BMC Biotechnology* 2010, **10**:44

**Submit your next manuscript to BioMed Central and take full advantage of:**

- Convenient online submission
- Thorough peer review
- No space constraints or color figure charges
- Immediate publication on acceptance
- Inclusion in PubMed, CAS, Scopus and Google Scholar
- Research which is freely available for redistribution

Submit your manuscript at  
[www.biomedcentral.com/submit](http://www.biomedcentral.com/submit)

