

RESEARCH ARTICLE

Open Access

Dose selection trial of metronomic oral vinorelbine monotherapy in patients with metastatic cancer: a hellenic cooperative oncology group clinical translational study

Evangelos Briasoulis^{1,13*}, Gerasimos Aravantinos², George Kouvatseas³, Periklis Pappas⁴, Eirini Biziota⁴, Ioannis Sainis⁵, Thomas Makatsoris⁶, Ioannis Varthalitis⁷, Ioannis Xanthakis⁸, Antonios Vassias⁹, George Klouvas¹⁰, Ioannis Boukovinas¹¹, George Fountzilias⁸, Kostantinos N Syrigos⁹, Haralambos Kalofonos⁶ and Epaminontas Samantas¹²

Abstract

Background: Metronomic chemotherapy is considered an anti-angiogenic therapy that involves chronic administration of low-dose chemotherapy at regular short intervals. We investigated the optimal metronomic dose of oral vinorelbine when given as monotherapy in patients with metastatic cancer.

Methods: Patients with recurrent metastatic breast (BC), prostate (PC) or non-small cell lung cancer (NSCLC) and adequate organ functions were randomly assigned to 30, 40 or 50 mg vinorelbine, taken orally three times a week. Treatment continued until disease progression, unacceptable toxicity, withdrawal of consent or maximum 24 months. Primary endpoint was time-to-treatment failure (TTF) and secondary were progression-free survival (PFS), toxicity, changes in blood concentrations of angiogenesis-associated biomarkers and pharmacokinetics.

Results: Seventy-three patients were enrolled. Four-month TTF rate did not differ between the three arms: 25.9% (11.1%-46.2% 95% Confidence Interval), 33.3% (15.6%-55.3%) and 18.2% (5.2%-40.3%) for the 30 mg, 40 mg and 50 mg arms (p -value = 0.56). Objective response was seen in 2 patients with NSCLC (treated at 30 and 50 mg respectively), one with BC (at 40 mg) and one with PC (at 50 mg) and lasted from 4 to 100 weeks, with maximum response duration achieved at 50 mg. Adverse events were mild and negligible and did not differ between the three arms. Blood levels of vinorelbine reached steady state from the second week of treatment and mean values for the 30, 40 and 50 mg were respectively 1.8 ng/ml (SD 1.10), 2.2 ng/ml (SD 1.87) and 2.6 ng/ml (SD 0.69). Low pre-treatment blood concentrations of FGF2 and IL8 predicted favorable response to therapy (p values 0.02 and 0.006, respectively), while high levels of *TEK* gene transcript predicted treatment resistance.

Conclusions: Considering the antitumor activity and response duration, the negligible toxicity of the highest dose investigated and the lack of drug accumulation over time, we suggest that 50 mg given three times a week is the optimal dose for metronomic oral vinorelbine. Further investigation of metronomic oral vinorelbine (MOVIN) at this dose is warranted in combination with conventional chemotherapy regimens and targeted therapies.

Trial registration: Clinicaltrials.gov NCT00278070

Keywords: Metronomic-chemotherapy, Antiangiogenic, Vinorelbine, Cancer

* Correspondence: ebriasou@otenet.gr

¹Department of Medical Oncology, University of Ioannina, School of Medicine, Ioannina, Greece

¹³Current affiliation: Department of Hematology, School of Medicine, University of Ioannina, Ioannina, Greece

Full list of author information is available at the end of the article

Background

Systemic therapy of metastatic cancers has moderately progressed over the last decade. Conventional chemotherapy appears to have reached a plateau in efficacy for most major solid cancers [1,2] and a number of promising targeted therapeutics have failed to meet their objectives [3,4].

Metronomic chemotherapy (MC) has developed as a patient-friendly therapy on the concept to induce prolonged cancer control without significant side effects even in frail patients [5-9]. It involves chronic administration of low-dose chemotherapy at regular short intervals and mechanistically it stands between targeted anti-angiogenic therapy and conventional chemotherapy, complementing known shortcomings of both [10,11]. Most approved antiangiogenic drugs are inhibitors of the VEGF/VEGFR pathway of endothelial cells and demonstrate short-living clinical activity possibly because of rebound emergence of alternative angiogenic "escape" pathways [12-16]. Conventional application of cytotoxic drugs at maximum tolerated doses (MTD) aims to induce highest possible apoptosis on cancer cells, but it also affects healthy proliferating tissues and requests treatment-free intervals to allow recovery from toxicities. However these treatment gaps may facilitate repair of damaged tumor vasculature rendering cancers aggressive and resistant [17,18]. MC seems to have the capability to bridge weaknesses of both targeted antiangiogenic therapy and conventional chemotherapy because it induces a pathway-independent inhibition of function and proliferation of tumor endothelial cells and in addition it can damage cancer cells, restore immune response and induce tumor dormancy [11,19-21].

In a previously published phase 1A study we defined pharmacokinetics and a dose range of metronomic oral vinorelbine that can safely be given to patients with advanced cancer and provided clinical evidence of the antiangiogenic basis of this therapy [22]. We now report the results of a dose selection randomized trial registered at www.clinicaltrials.gov (Trial ID NCT00278070) that aimed to define the optimal metronomic dose of oral vinorelbine by considering clinical end points, pharmacokinetic data and correlative biomarkers. Defining the optimal dose of metronomic chemotherapy remains a challenge [23-26].

Methods

Study design

This was a multi-institutional randomized open-label phase IB trial conducted in 6 medical centers. Eligible patients were randomly assigned to receive oral vinorelbine tartrate (Navelbine® softgel capsules) at one of three predefined flat dose levels (30 or 40 or 50 mg) taken orally 3 times a week before lunch. Treatment continued until disease progression or occurrence of treatment related toxicity grade 3 or

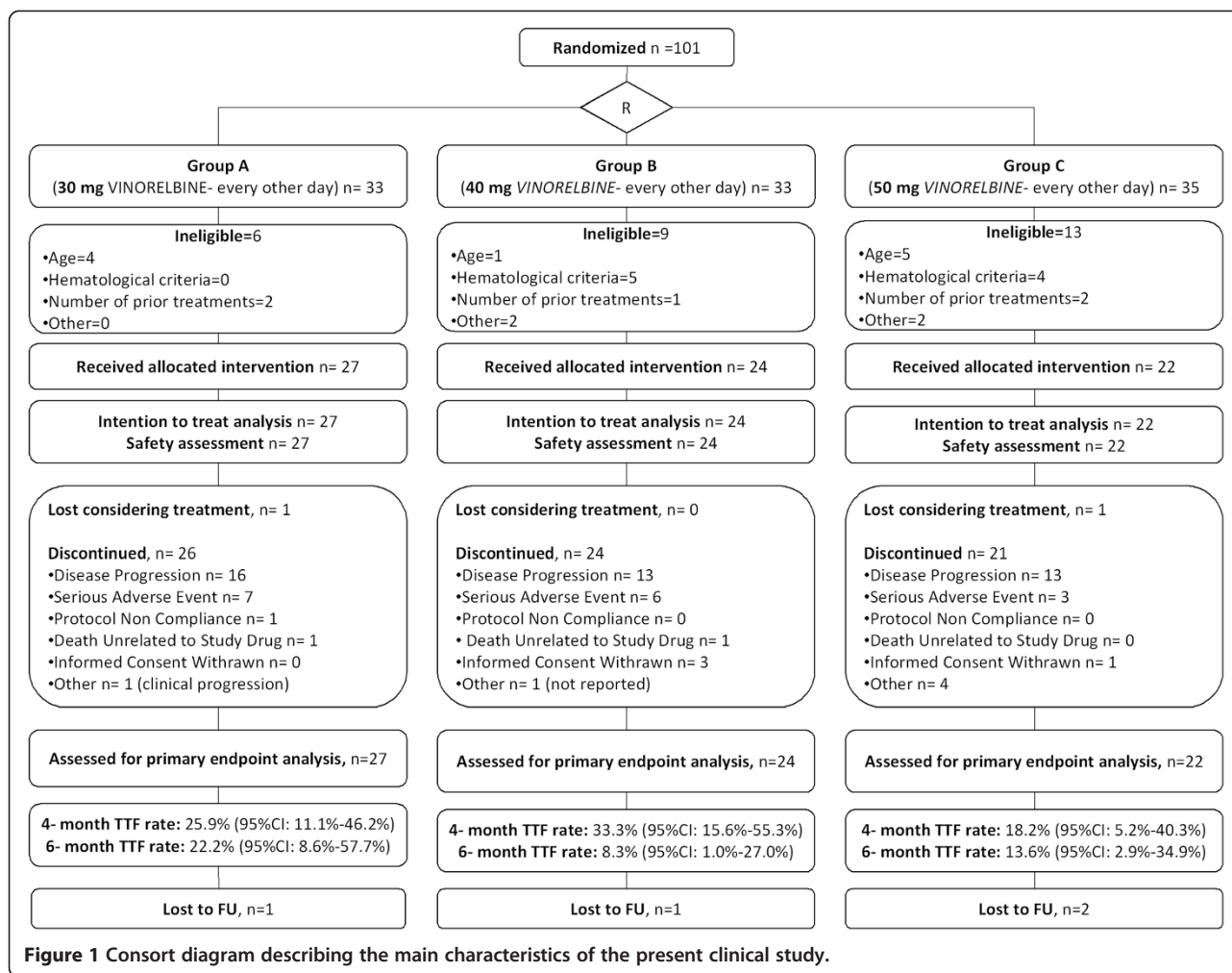
higher or patient's decision or maximum 24 months treatment. The study was conducted in accordance with the Declaration of Helsinki and Scientific Committees of involved institutions approved the protocol.

Patients

Eligibility criteria were similar to those of the phase 1A part of the trial [22]. Eligible patients had to sign an informed consent before participation. Eligibility criteria were as follows: age 16–75 years; performance status 0 to 2 according to the WHO scale; minimum life expectancy of 16 weeks; adequate bone marrow, hepatic and renal functions; absence of brain metastasis; metastatic and locally advanced hormonal refractory prostate, or previously treated metastatic breast cancer or non-small cell lung cancer previously treated with no more than two chemotherapeutic regimens; no other concurrent anticancer chemotherapy; serum creatinine within normal limits; hemoglobin of at least 10 g/L, white blood cell counts $\geq 3.5 \times 10^9/L$; absolute neutrophil count (ANC) $\geq 1.5 \times 10^9/L$; platelets $\geq 150 \times 10^9/L$; total serum bilirubin $\leq 1.5 \times$ upper normal limit (UNL); transaminases $\leq 2.0 \times$ upper normal limit (UNL) unless attributed to liver metastases. Concurrent limited field radiation therapy (RT) and any previous RT was allowed. Exclusion criteria were the following: major active infection; more than two prior chemotherapy regimens for metastatic disease; chemotherapy administered within 28 days prior to start of metronomic vinorelbine; extensive liver metastases occupying more than half the liver; ongoing anti-coagulation therapy; pregnancy or breastfeeding and any of the following if occurred within 12 months prior to randomization: myocardial infarction, severe/unstable angina, coronary/peripheral artery bypass graft, congestive heart failure, cerebrovascular accident or transient ischemic attack, pulmonary embolism, cardiac dysrhythmias of grade ≥ 2 , atrial fibrillation of any grade or heart rate corrected QT interval (QTc) > 450 msec for males or > 470 msec for females, uncontrolled hypertension ($> 150/100$ mmHg despite optimal medical therapy). Patients with severe acute or chronic medical or psychiatric condition that in the judgment of the investigator would make the patient inappropriate for entry into the trial would also be excluded. Drop-off reasons included serious adverse events possibly related to the study drug, conditions requiring therapeutic intervention not permitted by the protocol and patients personal preference. The consort diagram of the study is shown in Figure 1.

Follow up and sampling

Patients attended outpatient clinics every two weeks during the first two months on treatment and monthly thereafter for clinical assessment and blood sampling. For pharmacokinetic analysis, 5 ml whole blood samples



were collected into EDTA tubes (Sarstedt, Germany) before treatment initiation and at follow-up visits before taking oral vinorelbine. Samples were stored at -20°C until analysis. Additional blood plasma and blood RNA were obtained prior to treatment, 4 weeks later and on a monthly schedule in consented patients in order to study circulating angiogenesis biomarkers. Both plasma and PAXgene RNA[™] tubes (Qiagen, Thessaloniki, Greece) were stored at -80°C until analysis.

Study endpoints

The primary clinical endpoint was time to treatment failure (TTF). TTF rates per treatment arm would be compared at 4 and 6 months. Secondary endpoints were progression-free survival (PFS), time-to-progression, toxicity, correlation of baseline blood concentrations of angiogenesis-associated surrogate markers with treatment efficacy measures, and pharmacokinetics.

Toxicity was evaluated according to the National Cancer Institute Common Toxicity Criteria V3. Acute toxicity was considered any adverse event that occurred during

the first 8 weeks of treatment, while chronic toxicity was characterized any side effect that was recorded four months after the initiation of treatment. Toxicity that occurred between 8 weeks to 4 months of treatment was characterized sub-acute.

Treatment response was evaluated in patients that had completed at least 6 weeks of treatment and had at least one follow-up tumor assessment. Baseline tumor assessment was performed within 4 weeks prior to treatment initiation and thereafter every 2 months until documentation of response. Documented response should be confirmed after 4 weeks and should be regularly assessed every 4 months thereafter. Chest X-rays, computerized tomographic (CT) scans, ultrasound imaging studies and clinical measurements were used as appropriate. Response was documented using the RECIST response criteria for solid tumors [27] and Bublely Criteria for prostate cancer [28].

Circulating biomarkers

Plasma concentrations of basic fibroblast growth factor (FGF2), vascular endothelial growth factor-A (VEGFA),

interleukin-8 (IL8) and thrombospondin-1 (TSP1) were determined by using commercially available quantitative sandwich enzyme immunoassays. In particular, Quantikine kits (R&D Systems, Inc., Minneapolis, USA) were used for FGF2, VEGF, VEGFR2 and IL8, and the ChemiKine Human TSP1 EIA Kit for TSP1 (Chemicon International, Inc., Temecula, CA, USA). Protocols, procedures, and equipment were used according to the manufacturer's instructions. The lower detection limits for FGF2, VEGF, VEGFR2, IL8 and TSP1 were respectively 10, 31.2, 78.1, 31.2 and 9.8 pg/mL and the means for intra- and inter-assay coefficients of variation were 3.6 to 7.8 and 6.5 to 10.0, respectively. Optical densities were determined using a microfilter plate reader (DAS-A3, Roma, Italy) with filters for 450 nm (IL8, VEGF, VEGFR-2) and 490 nm (FGF2, TSP1). All analyses were carried out in duplicate. Samples available for each biomarker are shown in the REMARK diagram of Figure 2 [29].

RNA extraction, reverse transcription and real time PCR arrays

Peripheral blood was drawn in PAXgene tubes and kept frozen at -80°C . Total RNA was extracted with the PAXgene blood RNA kit, according to the manufacturer's instructions (PreAnalytiX/Qiagen), within 6 months from collection. The additive contained in the PAXgene tubes reduces *in vitro* RNA degradation and minimizes *in vitro* gene induction [30]. RNA was extracted from 4 patients who either had an objective response (three patients) or TTF >6 months (1 patient) and 4 patients who relapsed early (within 2 months of the initiation of treatment). The analysis was done in mirrored samples: before treatment initiation and 4 weeks after treatment initiation. RNA

integrity was checked by both conventional RNA electrophoresis and Agilent bioanalyzer 2100. High quality RNA was reverse transcribed and analyzed on a PCR array platform (PAHS-024 F, SABiosciences) and the expression levels of 84 genes involved in angiogenesis were determined by using real time PCR.

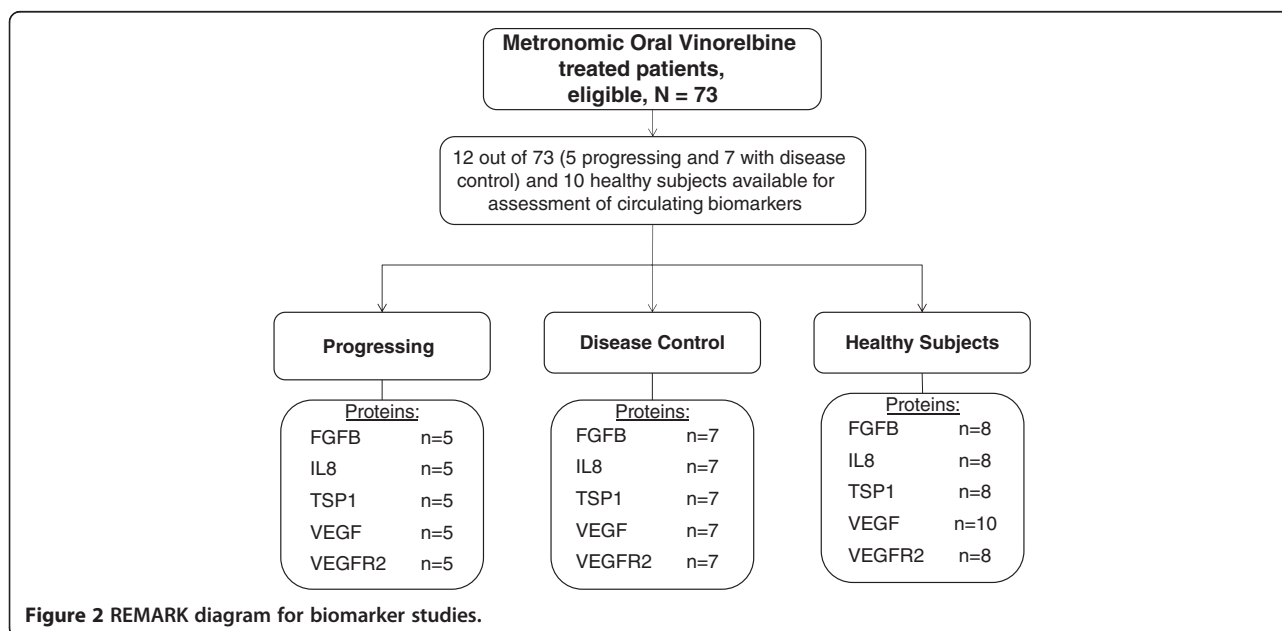
Only RNAs with RNA integrity number (RIN) >7 were used for reverse transcription and further processing. For reverse transcription the SABiosciences RT² First Strand kit was used. In all cases RNA of 0.5 μg was reversed transcribed. Simultaneous quantification of 84 key genes involved in angiogenesis was done by using the angiogenesis RT² profiler PCR Array (PAHS-024 F, SABiosciences). Relative expression was determined with the Light Cycler 480 instrument (Roche) and the $\Delta\Delta\text{Ct}$ method [31].

Pharmacokinetics

Whole blood samples were shipped on dry ice to the Institute de Recherché Pierre Fabre, Castres, France, for analysis. Concentrations of vinorelbine (VRL) and its main metabolite, 4-O-deacetylvinorelbine (DVRL) were quantified using a sensitive LC/MS/MS method previously reported [32].

Statistical analysis

Analysis was performed on an intent-to-treat basis. Regarding the definition of endpoints reported, time to treatment failure (TTF) was calculated as the time from random assignment to disease progression or death from any cause or early treatment discontinuation. Time to progression (TTP) was calculated as the time from random assignment to disease progression. Progression-free



survival (PFS) was calculated as the time from random assignment to disease progression or death from any cause. Survival was calculated as the time from random assignment to death from any cause. Event-free patients at last contact were censored. Time-to-event distributions were estimated using Kaplan-Meier curves while the log-rank test was used for comparisons.

The Fisher's exact test and the Jonckheere-Terpstra exact test were used to examine differences in toxicity rates between treatment groups. Association between biomarkers at baseline and response/activity (patients without objective response and/or progressing within 4 months vs those with objective response or PFS > 4 months vs healthy controls) was assessed with the Kruskal-Wallis test. Correlations among biomarkers were calculated using the Pearson's correlation test. Significance was determined at the level of 5% (two-sided).

The sample size for this 3-arm randomized study was estimated under the assumption that the expected 4 and 6 month TTF rate for the 30 mg, 40 mg and 50 mg groups would be 10%, 30% and 50% and 5%, 20% and 40% respectively. Using a global chi-square test at the 2.5% level of significance (Bonferroni adjusted) the study had 80% power to reject the null hypothesis that all the arms had the same TTF rate [33].

Results

Between January 2006 and January 2007, 73 eligible patients were recruited into the trial. The median age of the patients was 67 years for the 30 and 50 mg dose levels and 66 years for the 40 mg dose level arm. The majority of patients (68.5%) were male, they had a PS 1–2 (64.4%) and the most common cancer was NSCLC (42.5%), while 80.8% had received prior chemotherapy and the most common metastatic site were bones (57.5%). Baseline patients' characteristics are shown in Table 1.

Clinical outcomes

Antitumor efficacy was seen at all dose arms. Confirmed partial remissions were documented in four cases of patients. Those were two NSCLC patients who received 30 mg (response duration 4 weeks) and 50 mg (response duration 100 weeks) one breast cancer patient treated at 40 mg (response duration 18 weeks) and one prostate cancer patient treated at 50 mg (response duration 30 weeks) (Figure 3). Eleven patients achieved a TTF longer than 6 months. No arm was found superior at the primary end-point (Table 2, Figure 4). The median time to treatment failure was eight weeks in all three arms, while the 4 month TTF rate point estimates and 95% Confidence Intervals (CIs) for the 30 mg, 40 mg and 50 mg vinorelbine groups were 25.9% (11.1%-46.2%), 33.3% (15.6%-55.3%) and 18.2% (5.2%-40.3%) respectively. The p-value of the Fisher's exact test for equality of the rates is 0.56. Similarly,

Table 1 Patients' characteristics

		Oral vinorelbine dose arms		
		30 mg	40 mg	50 mg
Patients	<i>N</i>	27	24	22
Age	<i>median</i>	67	66	67
	<i>range</i>	43-74	48-75	44-75
Gender	<i>Male</i>	18 (66.6%)	17 (70.8%)	15 (68.2%)
	<i>Female</i>	9 (33.4%)	7 (29.2%)	7 (31.8)
Cancer type	<i>Breast</i>	7 (26.0%)	6 (25.0%)	7 (31.8%)
	<i>Prostate</i>	8 (29.6%)	7 (29.2%)	7 (31.8%)
	<i>NSCLC</i>	12 (44.4%)	11 (45.8%)	8 (36.4%)
PS	<i>0</i>	8 (29.6%)	10 (41.6%)	8 (36.4%)
	<i>1</i>	15 (55.6%)	11 (45.8%)	12 (54.6%)
	<i>2</i>	4 (14.8%)	3 (12.6%)	2 (9.0%)
Prior chemotherapy	<i>0</i>	5 (18.6%)	4 (16.6%)	5 (22.8%)
	<i>1</i>	13 (48.2%)	12 (50.0%)	11 (50.0%)
	<i>2</i>	9 (33.4%)	8 (33.4%)	6 (27.2%)
Prior radiotherapy		14 (51.8%)	8 (33.4%)	11 (50.0%)
Prior hormonotherapy		12 (44.4%)	11 (44.8%)	13 (59.0%)
Organs with metastases	<i>lung</i>	15 (55.6%)	14 (58.4%)	10 (45.4%)
	<i>liver</i>	8 (29.6%)	4 (16.6%)	3 (13.6%)
	<i>bone</i>	18 (66.6%)	15 (62.6%)	9 (41%)

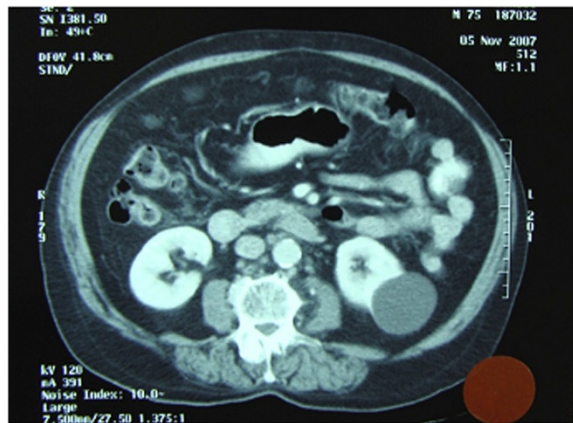
the 6 month TTF rate point estimates and 95% CIs were respectively 22.2% (8.6%-57.7%), 8.3% (1.0%-27.0%) and 13.6% (2.91%-34.9%) for the 30 mg, 40 mg and 50 mg groups respectively. The p-value of the Fisher's exact test is 0.39. In both cases the TTF rate did not vary statistically significant among the treatment arms. No differences were noticed among the three arms with regard to PFS and overall survival.

The side effects observed were generally mild and negligible. No differences in grade 3 and 4 acute toxicities were seen among the three dose levels. The only statistically significant difference observed was lymphopenia (worse in lower dose levels) and gastrointestinal (worse at dose level 40) (Table 3). Chronic toxicities did not occur.

Pharmacokinetics

Trough levels of vinorelbine were measured in 237 blood samples drawn from 44 consented patients (61% of treated patients) over a time that spanned duration of therapy from 2 to 36 weeks. Steady state concentrations were similar to those recorded in the phase IA trial with no evidence of accumulation over time (Figure 5). Mean values and standard deviation (SD) for the 30 mg dose was 1.8 ng/ml (SD 1.10), 2.2 ng/ml (SD 1.87) for the 40 mg dose and 2.6 ng/ml (SD 0.69) for the 50 mg dose. A dose proportional increase of steady state concentrations

Partial remission of retroperitoneal lymph nodes in a 70 yo PC patient treated on the 50 mg dose arm



Partial remission of a mediastinal lymph node and pleural effusion in a 48 yo BC patient treated on the 40 mg dose arm

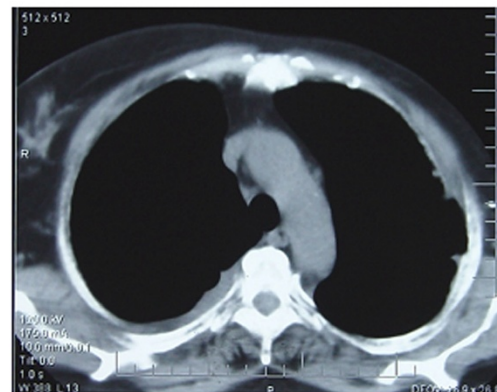


Figure 3 Objective tumor responses. Objective responses documented in a prostate cancer patient treated at 50 mg dose and a breast cancer patient treated at 40 mg dose.

was noted but did not reach statistical significance (ANOVA p value = 0.5).

Circulating angiogenesis modulating proteins and gene transcripts

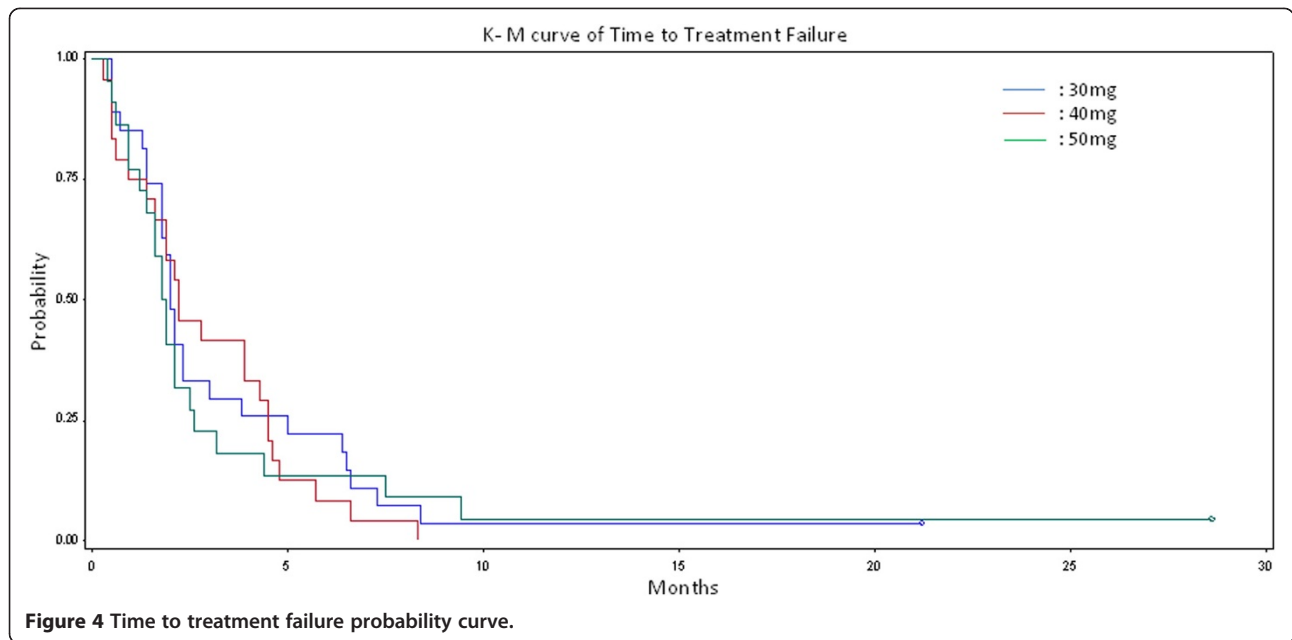
Of the investigated angiogenesis modulating proteins, baseline pre-treatment levels of FGF2 and IL8 were found to have a power to predict favorable response to metronomic vinorelbine (p value = 0.02 and 0.006 respectively). In particular, patients with baseline levels approximating

those of healthy individuals had a chance to have a favorable outcome to therapy. VEGF and VEGFR2 baseline levels did not differ between patients with favorable versus non-favorable therapy outcome and TSP-1 data were inconclusive at a marginal p-value (Table 4).

Data analysis of circulating gene transcripts by using the $\Delta\Delta Ct$ method revealed that TEK gene transcript was significantly up-regulated before treatment in non responders, while gene transcripts of SPHK1, CCL2, KDR, CCL1, FGF1, FGFR3, FIGE, HAND2, IFNA1, IGF1, MDK,

Table 2 TTF rate point estimates and 95% confidence intervals for the 30 mg, 40 mg and 50 mg vinorelbine groups (TTF refers to time from treatment initiation to discontinuation for any reason)

Vinorelbine dose arm (mg)	Patients (%) on treatment		<i>p value</i>	<i>p value</i>
	At 4 months	At 6 months		
30	25.9% (11.1-46.2%)	22.2% (8.6-57.7%)	0.56	0.39
40	33.3% (15.6-55.6%)	8.3% (1.0-27.0%)		
50	18.2% (5.2-20.3%)	13.6% (2.9-34.9%)		



MMP2, PLG were down-regulated about two fold and the CXCL9 gene was down-regulated 2.92 fold. FGF2 transcript post treatment initiation was found to be up-regulated in non responders and IL8, PGF, FIGF, IGF1 gene transcripts were down-regulated more than 2 folds (Figure 6).

Discussion

This was a dose selection study of metronomic oral vinorelbine for the treatment of metastatic NSCLC, breast and prostate cancer patients that had relapsed from a previous therapy. The primary clinical endpoint of this trial was set to be time to treatment failure

Table 3 Worse toxicity events by grade and treatment dose group- N of patients

Label of variable	Treatment dose group												FISH test p value
	Vinorelbine 30mg				Vinorelbine 40mg				Vinorelbine 50mg				
	Grade				Grade				Grade				
	1	2	3	4	1	2	3	4	1	2	3	4	
Hemoglobin	17	2	1	.	16	3	1	.	14	2	.	.	ND
Leukocytes	5	.	1	2	2	3	1	2	3	3	2	1	ND
Neutrophils	1	1	2	1	5	1	1	2	3	1	2	2	ND
Platelets	4	.	.	.	1	.	.	.	1	.	.	.	ND
Neuropathy Sensor	1	1	.	.	2	.	.	.	3	.	.	.	ND
Diarrhea	2	.	.	.	1	.	1	ND
Constipation	2	.	.	.	2	.	.	.	1	.	1	.	ND
Fatigue	7	.	.	.	5	.	1	.	4	.	.	1	ND
Metabolic/Laboratory	6	1	1	.	3	2	1	.	5	1	.	.	ND
Pain	1	2	2	.	6	.	.	.	2	1	.	.	ND
Hemoptysis	.	1	.	.	1	ND
Edema: limb	1	.	1	.	1	.	1	.	ND
Upper Respiratory	3	.	2	.	3	ND
Febrile Neutropenia	1	ND
Gastrointestinal	1	.	.	.	6	2	.	.	.	1	.	.	0,035
Weight (Gain- Loss)	.	2	1	.	1	ND
Fever	.	1	.	.	1	.	.	.	1	1	.	.	ND
Lymphopenia	.	3	.	.	2	1	1	0,032

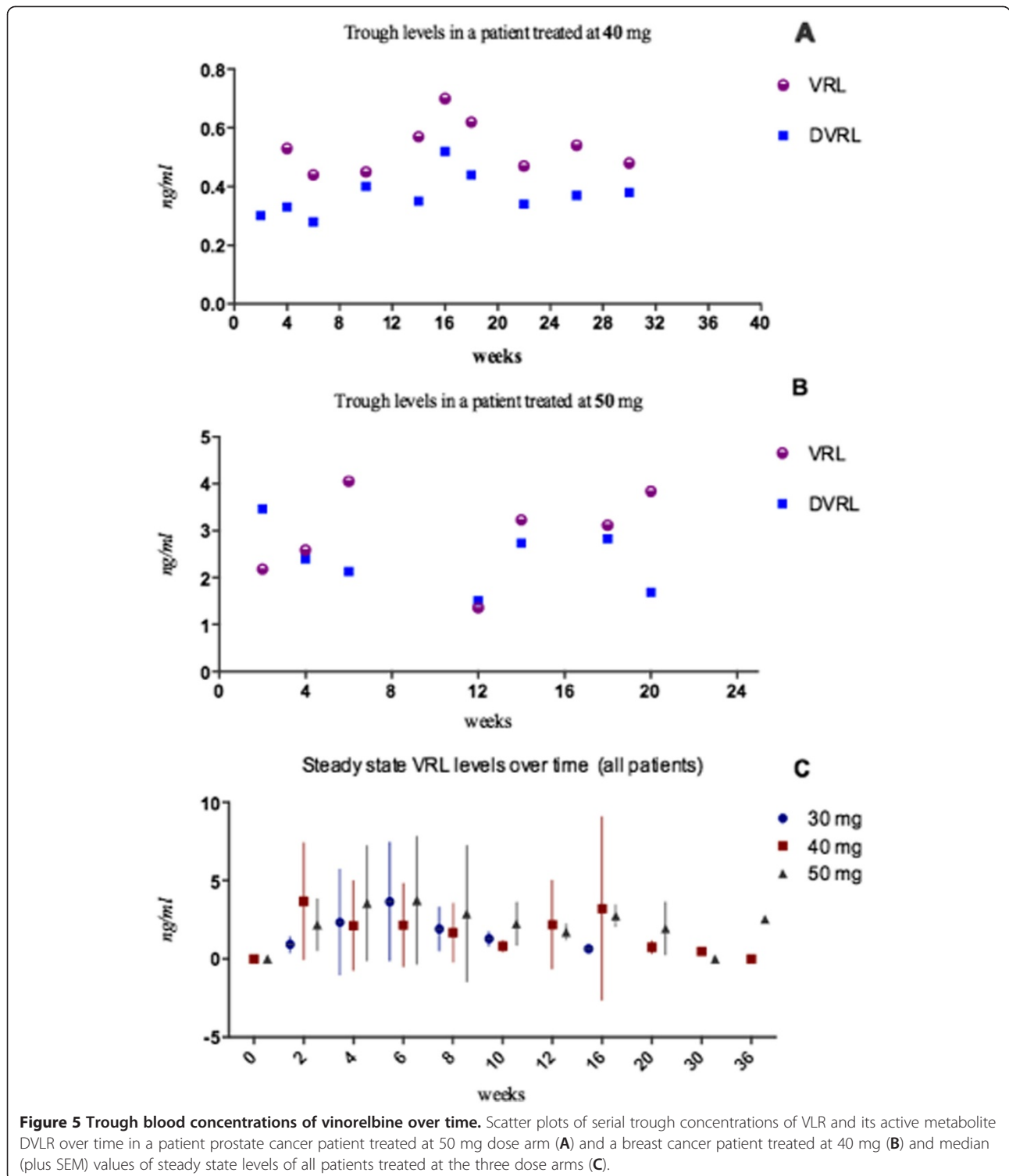


Figure 5 Trough blood concentrations of vinorelbine over time. Scatter plots of serial trough concentrations of VLR and its active metabolite DVLR over time in a patient prostate cancer patient treated at 50 mg dose arm (A) and a breast cancer patient treated at 40 mg (B) and median (plus SEM) values of steady state levels of all patients treated at the three dose arms (C).

(TTF). We chose TTF as a primary endpoint because it is a composite measure that co-estimates time from randomization to discontinuation of treatment for any reason, including disease progression, treatment toxicity, and death. It trade-offs efficacy and toxicity, which

is of major importance for metronomic therapy, especially when tested in patients with diverse tumor types [34]. This trial failed to demonstrate superiority in any of the three doses investigated at the primary endpoint, since median TTF was six weeks for all three arms and

Table 4 Assessment of circulating angiogenesis modulating proteins as therapy activity predictors

		Treatment failure	Objective response or TTF > 4monts	Healthy controls
FGF2 (pg/ml)	<i>N</i>	5	7	8
	<i>median</i>	3.4	1.8	0.8
	<i>range</i>	(1.9-23.7)	(0.4-14.8)	(0.2-2.3)
	<i>p-value</i>			0.02*
IL8 (pg/ml)	<i>N</i>	5	7	8
	<i>median</i>	27.2	5.8	5.8
	<i>range</i>	(12.2-61.9)	(2.8-18.9)	(1.1-7.5)
	<i>p-value</i>			0.006**
TSP-1 (ng/ml)	<i>N</i>	5	7	8
	<i>median</i>	125.1	69.6	67.3
	<i>range</i>	(85.1-328.4)	(24-452)	(9-710.1)
	<i>p-value</i>			0.047
VEGF (pg/ml)	<i>N</i>	5	7	10
	<i>median</i>	1552	428,6	2094
	<i>range</i>	(804.3-2785)	(252.4-3116)	(1122-2387)
	<i>p-value</i>			0.074
VEGFR-2 (pg/ml)	<i>N</i>	5	7	8
	<i>median</i>	13680	13275	12328
	<i>range</i>	(8945-16465)	(7455-18065)	(8235-17615)
	<i>p-value</i>			0.657

the TTF rates at 4 and 6 months did not differ among the three arms either. Considering the objective tumor responses, partial remission was confirmed in four cases and lasted up to 49 weeks. Two of the objective responses occurred in patients treated at the upper dose arm and lasted longer compared to objective responses that were achieved with the lower doses. Major finding of this trial, as in the previous one, was that activity came at no cost of clinically significant toxicity, which is a hallmark of metronomic chemotherapy [19]. In addition, toxicities that are known to occur with drugs that inhibit the VEGF – VEGFR-2 pathway were not seen with metronomic vinorelbine, which supports that a combination of these two antiangiogenic therapies would be probably feasible [35,36].

Antiangiogenic therapy is known to work optimally if endothelial cells are exposed to steady levels of inhibitors [11,37]. Both vinorelbine and its active metabolite achieved steady state concentrations at the low nanomolar range, which was found in vitro to optimally inhibit proliferation of endothelial cell and induce expression of endogenous anti-angiogenic molecules [38].

Similarly to the phase IA study, we found that low baseline levels of circulating endogenous promoters of angiogenesis and in particular IL8 and FGF2 could predict clinical benefit from treatment with metronomic vinorelbine [22]. In addition, we investigated circulating

transcripts of a panel of 84 key genes involved in modulating the biological processes of angiogenesis. Among them, high baseline levels of TEK transcripts were associated with resistance to therapy. TEK, a biomarker of hemangioblasts, appears to be a potential predictor of refractoriness to antiangiogenic therapy [39,40]. This is possibly related to its function as an endothelial cell surface receptor for angiopoietins ANGPT1, ANGPT2 and ANGPT4, that are regulators of survival and adhesion of endothelial cells and promoters of vascular stability and quiescence [41].

Overall, this study failed to specify the optimal metronomic dosage of oral vinorelbine by the primary endpoint. However it boosts the findings of the phase IA dose-ranging study by confirming that metronomic oral vinorelbine can safely be administered at doses up to 50 mg three time a week and that it can yield long lasting antitumor activity at the this dose without overt toxicity. In addition the steady-state nanomolar concentrations and the association of angiogenesis modulating factors with its activity denotes that the mechanism of antitumor activity of metronomic therapy is most likely antiangiogenic, as suggested by other investigators too [26,42].

Conclusion

In conclusion, by taking into consideration the antitumor activity and response duration, negligible toxicity of the

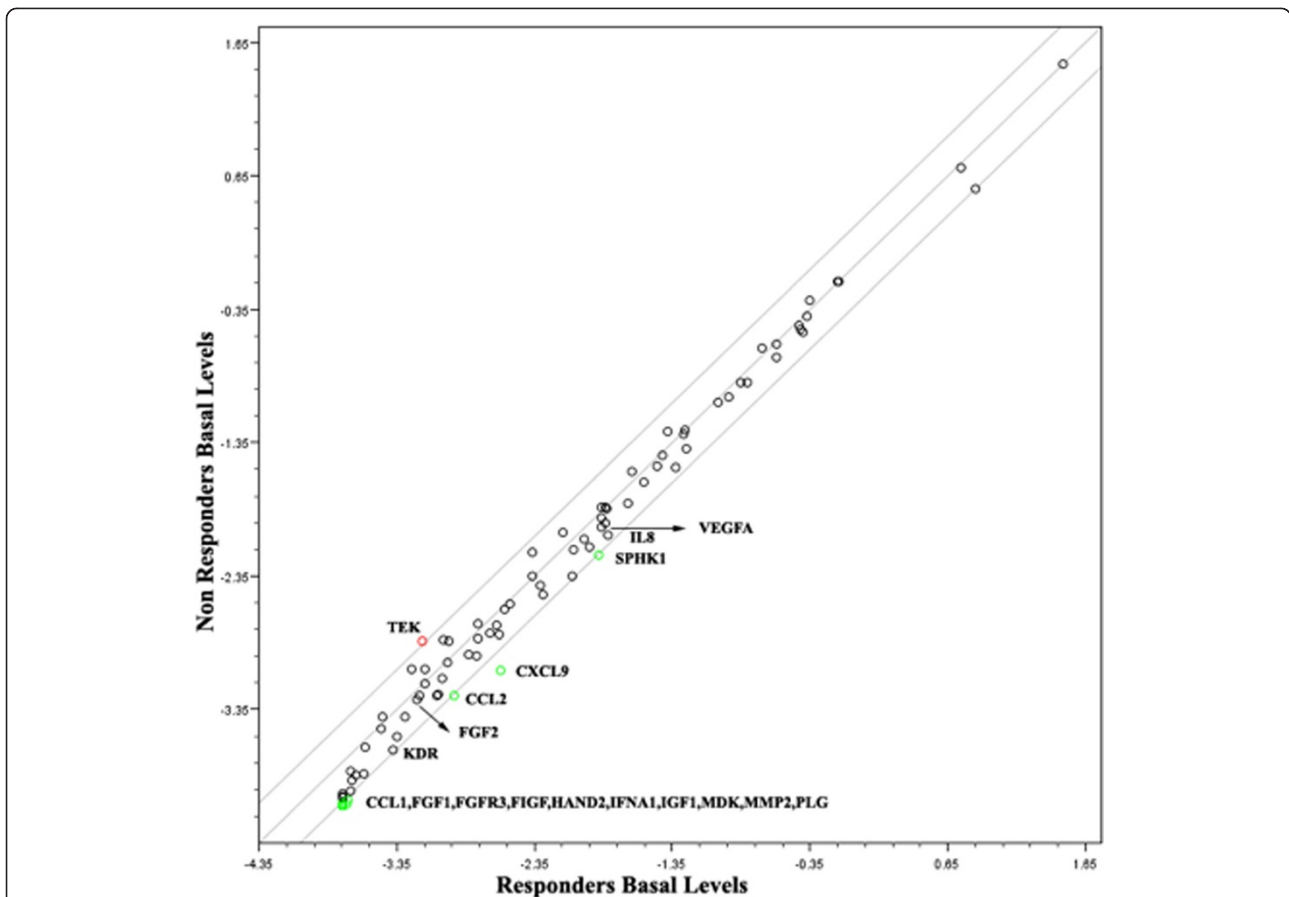


Figure 6 Transcript levels of 84 angiogenesis-related genes graphed against treatment outcome Scatter plots comparing circulating pretreatment gene transcript levels of responders versus non-responders. The graphs plot the \log_{10} of normalized gene expression levels between the two conditions, responders (x-axis) and non-responders (y-axis). Dots outside the area between the two lines indicate fold differences larger than a threshold of 2. The red dots in the upper left corner readily identify up-regulated genes, and the green dots in the lower right corner readily identify down regulated genes.

higher dose tested and lack of drug accumulation over time, we suggest that metronomic oral vinorelbine warrants further investigation in combination with conventional chemotherapy regimens or targeted angiogenic therapies at the dose of 50 mg given every other day, three times a week. Finally these data add support to the concept that metronomic scheduling provides a new future for using cytotoxic chemotherapy, especially in cases of incurable metastatic cancers [43].

Abbreviations

ANC: Absolute neutrophil count; ANOVA: analysis of variance; ANGPT1: Angiopoietin 1; ANGPT2: Angiopoietin 2; ANGPT4: Angiopoietin 4; CCL1: Chemokine ligand 1; CCL2: Chemokine ligand 2; CXCL9: Chemokine (C-X-C motif) ligand 9; BC: Breast; CI: Confidence interval; CTC: Common toxicity criteria; CT: Computerized tomography; EDTA: Ethylenediaminetetraacetic acid; FGF1: fibroblast growth factor 1 (acidic); FGF2: fibroblast growth factor 2 (basic); FIGF: C-fos induced growth factor; HAND2: Heart and neural crest derivatives expressed 2; IGF1: Insulin-like growth factor 1; IL8: Interleukin-8; IFNA1: Interferon alpha-1; LC/MS/MS: Liquid chromatography - tandem mass spectrometry; MDK: Midkine (neurite growth-promoting factor 2); MC: Metronomic chemotherapy; MMP2: Matrix metalloproteinase-2; NSCLC: Non-small cell lung cancer;

MTD: Maximum tolerated doses; PC: Prostate cancer; PLG: Plasminogen; PGF: Placental growth factor; PS: Performance status; QTC: QT interval corrected; RNA: Ribonucleic acid; TSP1: Thrombospondin-1; TTF: Time-to-treatment failure; PFS: Progression-free survival; PCR: Polymerase Chain Reaction; RECIST: Response Evaluation Criteria in Solid Tumors; RIN: RNA integrity number; RT: Radiation therapy; SD: Standard deviation; SPHK1: Sphingosine kinase 1; TEK: Tyrosine kinase, endothelial; VRL: Vinorelbine; DVRL: 4-O-deacetylvinorelbine; VEGFA: Vascular endothelial growth factor-A; VEGFR-2: Vascular endothelial growth factor receptor 2; WHO: world health organization.

Competing interest

Evangelos Briasoulis received a research fund from Pierre Fabre, Farmaka SA, Greece, through the Research Committee of the University of Ioannina, for the biomarkers subproject of the study. Other authors declare no conflicts of interest.

Authors' contributions

Conception: EB. Study Design: EB, GK, PP. Patient enrollment, clinical management, data recording and collection of biologic material: EB, GA, TM, IV, IX, AV, GK, IB, GF, KNS, HK, ES. Molecular analysis and interpretation: IS. Pharmacokinetics and biomarkers analysis and interpretation: PP, EB. Statistical design and analysis: GK. All authors read and approved the final manuscript.

Acknowledgments

We thank Olga Siarabi (Data Manager) and Maria Moschoni (Study Secretary and editorial assistance) for their contributions in this study, and Dr Eleftheria Hatzimichael for critical reading and language editing of the manuscript.

Presentations

Presented at the 33rd ESMO Congress, 12–16 September 2008, Stockholm Sweden, Abstract ID 643.

Author details

¹Department of Medical Oncology, University of Ioannina, School of Medicine, Ioannina, Greece. ²Second Department of Medical Oncology, "Agii Anargiri" Cancer Hospital, Athens, Greece. ³Health Data Specialists Ltd, Athens, Greece. ⁴Department of Pharmacology, University of Ioannina, Medical School, Ioannina, Greece. ⁵University of Ioannina, Cancer Biobank Center, Ioannina, Greece. ⁶Division of Oncology, Department of Medicine, University Hospital, University of Patras Medical School, Patras, Greece. ⁷Oncology Department, General Hospital of Chania, Crete, Greece. ⁸Department of Medical Oncology, "Papageorgiou" Hospital, Aristotle University of Thessaloniki School of Medicine, Thessaloniki, Greece. ⁹Oncology Unit GPP, "Sotiria" General Hospital, Athens School of Medicine, Athens, Greece. ¹⁰Second Department of Medical Oncology, "Metropolitan" Hospital, Piraeus, Greece. ¹¹Department of Medical Oncology, "Theagenio" Cancer Hospital, Thessaloniki, Greece. ¹²Third Department of Medical Oncology, "Agii Anargiri" Cancer Hospital, Athens, Greece. ¹³Current affiliation: Department of Hematology, School of Medicine, University of Ioannina, Ioannina, Greece.

Received: 26 February 2013 Accepted: 21 May 2013

Published: 29 May 2013

References

- Kosmidis PA, Fountzilas G, Eleftheraki AG, Kalofonos HP, Pentheroudakis G, Skarlos D, Dimopoulos MA, Bafaloukos D, Pectasides D, Samantas E, et al: Paclitaxel and gemcitabine versus paclitaxel and vinorelbine in patients with advanced non-small-cell lung cancer. A phase III study of the hellenic cooperative oncology group (HeCOG). *Ann Oncol* 2011, **22**(4):827–834.
- Saltz LB: Progress in cancer care: the hope, the hype, and the gap between reality and perception. *J Clin Oncol* 2008, **26**(31):5020–5021.
- Fojo T, Parkinson DR: Biologically targeted cancer therapy and marginal benefits: are we making too much of too little or are we achieving too little by giving too much? *Clin Cancer Res* 2010, **16**(24):5972–5980.
- Richards L: Targeted therapies: disappointing outcomes for anti-VEGF therapy. *Nat Rev Clin Oncol* 2011, **8**(4):194.
- Gebbia V, Serretta V, Borsellino N, Valerio MR: Salvage therapy with oral metronomic cyclophosphamide and methotrexate for castration-refractory metastatic adenocarcinoma of the prostate resistant to docetaxel. *Urology* 2011, **78**(5):1125–1130.
- Kerbel RS, Klement G, Pritchard KI, Kamen B: Continuous low-dose anti-angiogenic/ metronomic chemotherapy: from the research laboratory into the oncology clinic. *Ann Oncol* 2002, **13**(1):12–15.
- Mir O, Domont J, Cioffi A, Bonvalot S, Boulet B, Le Pechoux C, Terrier P, Spielmann M, Le Cesne A: Feasibility of metronomic oral cyclophosphamide plus prednisolone in elderly patients with inoperable or metastatic soft tissue sarcoma. *Eur J Cancer* 2011, **47**(4):515–519.
- Penel N, Clisant S, Dansin E, Desauw C, Degardin M, Mortier L, Vanhuysse M, Bonodeau F, Fournier C, Cazin JL, et al: Megestrol acetate versus metronomic cyclophosphamide in patients having exhausted all effective therapies under standard care. *Br J Cancer* 2010, **102**(8):1207–1212.
- Wong NS, Buckman RA, Clemons M, Verma S, Dent S, Trudeau ME, Roche K, Ebos J, Kerbel R, Deboer GE, et al: Phase I/II trial of metronomic chemotherapy with daily dalteparin and cyclophosphamide, twice-weekly methotrexate, and daily prednisone as therapy for metastatic breast cancer using vascular endothelial growth factor and soluble vascular endothelial growth factor receptor levels as markers of response. *J Clin Oncol* 2010, **28**(5):723–730.
- Hahnfeldt P, Folkman J, Hlatky L: Minimizing long-term tumor burden: the logic for metronomic chemotherapeutic dosing and its antiangiogenic basis. *J Theor Biol* 2003, **220**(4):545–554.
- Kerbel RS, Kamen BA: The anti-angiogenic basis of metronomic chemotherapy. *Nat Rev Cancer* 2004, **4**:423–436.
- Yancopoulos GD: Clinical application of therapies targeting VEGF. *Cell* 2010, **143**(1):13–16.
- Tejpar S, Prenen H, Mazzone M: Overcoming resistance to antiangiogenic therapies. *Oncologist* 2012, **17**(8):1039–1050.
- Huang D, Ding Y, Zhou M, Rini BI, Petillo D, Qian CN, Kahnoski R, Futreal PA, Furge KA, Teh BT: Interleukin-8 mediates resistance to antiangiogenic agent sunitinib in renal cell carcinoma. *Cancer Res* 2010, **70**(3):1063–1071.
- Ellis LM, Hicklin DJ: VEGF-targeted therapy: mechanisms of anti-tumour activity. *Nat Rev Cancer* 2008, **8**(8):579–591.
- Bergers G, Hanahan D: Modes of resistance to anti-angiogenic therapy. *Nat Rev Cancer* 2008, **8**(8):592–603.
- Shaked Y, Kerbel RS: Antiangiogenic strategies on defense: on the possibility of blocking rebounds by the tumor vasculature after chemotherapy. *Cancer Res* 2007, **67**(15):7055–7058.
- Frei E 3rd, Canellos GP: Dose: a critical factor in cancer chemotherapy. *Am J Med* 1980, **69**(4):585–594.
- Pasquier E, Kavallaris M, Andre N: Metronomic chemotherapy: new rationale for new directions. *Nat Rev Clin Oncol* 2010, **7**(8):455–465.
- Chen CA, Ho CM, Chang MC, Sun WZ, Chen YL, Chiang YC, Syu MH, Hsieh CY, Cheng WF: Metronomic chemotherapy enhances antitumor effects of cancer vaccine by depleting regulatory T lymphocytes and inhibiting tumor angiogenesis. *Mol Ther* 2010, **18**(6):1233–1243.
- Andre N, Padovani L, Pasquier E: Metronomic scheduling of anticancer treatment: the next generation of multitarget therapy? *Future Oncol* 2011, **7**(3):385–394.
- Briasoulis E, Pappas P, Puozzo C, Tolis C, Fountzilas G, Dafni U, Marselos M, Pavlidis N: Dose-ranging study of metronomic oral vinorelbine in patients with advanced refractory cancer. *Clin Cancer Res* 2009, **15**(20):6454–6461.
- Skipper HE, Schabel FM Jr, Mellett LB, Montgomery JA, Wilkoff LJ, Lloyd HH, Brockman RW: Implications of biochemical, cytokinetic, pharmacologic, and toxicologic relationships in the design of optimal therapeutic schedules. *Cancer Chemother Rep* 1970, **54**(6):431–450.
- DeVita VT Jr, Chu E: A history of cancer chemotherapy. *Cancer Res* 2008, **68**(21):8643–8653.
- Maraveyas A, Lam T, Hetherington JW, Greenman J: Can a rational design for metronomic chemotherapy dosing be devised? *Br J Cancer* 2005, **92**(8):1588–1590.
- Shaked Y, Emmenegger U, Man S, Cervi D, Bertolini F, Ben-David Y, Kerbel RS: Optimal biologic dose of metronomic chemotherapy regimens is associated with maximum antiangiogenic activity. *Blood* 2005, **106**(9):3058–3061.
- Therasse P, Arbuck SG, Eisenhauer EA, Wanders J, Kaplan RS, Rubinstein L, Verweij J, Van Glabbeke M, van Oosterom AT, Christian MC, et al: New guidelines to evaluate the response to treatment in solid tumors. European organization for research and treatment of cancer, national cancer institute of the United States, national cancer institute of Canada. *J Natl Cancer Inst* 2000, **92**(3):205–216.
- Bubley GJ, Carducci M, Dahut W, Dawson N, Daliani D, Eisenberger M, Figg WD, Freidlin B, Halabi S, Hudes G, et al: Eligibility and response guidelines for phase II clinical trials in androgen-independent prostate cancer: recommendations from the prostate-specific antigen working group. *Journal of clinical oncology : official journal of the American Society of Clinical Oncology* 1999, **17**(11):3461–3467.
- McShane LM, Altman DG, Sauerbrei W, Taube SE, Gion M, Clark GM: Reporting recommendations for tumor marker prognostic studies (REMARK). *J Natl Cancer Inst* 2005, **97**(16):1180–1184.
- Pectasides D, Papaxoinis G, Kotoula V, Fountzilas H, Korantzis I, Koutras A, Dimopoulos AM, Papakostas P, Aravantinos G, Varthalitis I, et al: Expression of angiogenic markers in the peripheral blood of docetaxel-treated advanced breast cancer patients: A Hellenic Cooperative Oncology Group (HeCOG) study. *Oncol Rep* 2012, **27**(1):216–224.
- Livak K, Schmittgen T: Analysis of relative gene expression data using real-time quantitative PCR and the 2^{-ΔΔCt} Method. *Methods* 2001, **25**(4):402–408.
- Van Heugen JC, De Graeve J, Zorza G, Puozzo C: New sensitive liquid chromatography method coupled with tandem mass spectrometric detection for the clinical analysis of vinorelbine and its metabolites in blood, plasma, urine and faeces. *J Chromatogr A* 2001, **926**(1):11–20.
- Cohen J: *Statistical Power Analysis for the Behavioral Sciences*. New York, NY: Academic Press; 1977.
- Thall PF, Cook JD: Dose-finding based on efficacy-toxicity trade-offs. *Biometrics* 2004, **60**(3):684–693.

35. Verheul HM, Pinedo HM: Possible molecular mechanisms involved in the toxicity of angiogenesis inhibition. *Nat Rev Cancer* 2007, **7**(6):475–485.
36. Eskens FA, Verweij J: The clinical toxicity profile of vascular endothelial growth factor (VEGF) and vascular endothelial growth factor receptor (VEGFR) targeting angiogenesis inhibitors; a review. *Eur J Cancer* 2006, **42**(18):3127–3139.
37. Folkman J: Angiogenesis: an organizing principle for drug discovery? *Nat Rev Drug Discov* 2007, **6**(4):273–286.
38. Pappas P, Biziota I, Marselos M, Brasoulis E: Evaluation of antiproliferative and molecular effects of vinorelbine and its active metabolite 4-O-deacetyl-vinorelbine on human endothelial cells in an in vitro simulation model of metronomic chemotherapy. *Eur J Cancer* 2008, **6**(Supplement 9s):138–139. Abstract 533.
39. Hamaguchi I, Huang XL, Takakura N, Tada J, Yamaguchi Y, Kodama H, Suda T: In vitro hematopoietic and endothelial cell development from cells expressing TEK receptor in murine aorta-gonad-mesonephros region. *Blood* 1999, **93**(5):1549–1556.
40. Dales JP, Garcia S, Bonnier P, Duffaud F, Meunier-Carpentier S, Andrac-Meyer L, Lavaut MN, Allasia C, Charpin C: Tie2/Tek expression in breast carcinoma: correlations of immunohistochemical assays and long-term follow-up in a series of 909 patients. *Int J Oncol* 2003, **22**(2):391–397.
41. Dumont DJ, Yamaguchi TP, Conlon RA, Rossant J, Breitman ML: tek, a novel tyrosine kinase gene located on mouse chromosome 4, is expressed in endothelial cells and their presumptive precursors. *Oncogene* 1992, **7**(8):1471–1480.
42. Laquente B, Vinals F, Germa JR: Metronomic chemotherapy: an antiangiogenic scheduling. *Clin Transl Oncol* 2007, **9**(2):93–98.
43. Gasparini G: Metronomic scheduling: the future of chemotherapy? *Lancet Oncol* 2001, **2**(12):733–740.

doi:10.1186/1471-2407-13-263

Cite this article as: Briasoulis et al.: Dose selection trial of metronomic oral vinorelbine monotherapy in patients with metastatic cancer: a hellenic cooperative oncology group clinical translational study. *BMC Cancer* 2013 **13**:263.

Submit your next manuscript to BioMed Central
and take full advantage of:

- Convenient online submission
- Thorough peer review
- No space constraints or color figure charges
- Immediate publication on acceptance
- Inclusion in PubMed, CAS, Scopus and Google Scholar
- Research which is freely available for redistribution

Submit your manuscript at
www.biomedcentral.com/submit

