



Drug-associated progressive multifocal leukoencephalopathy: a clinical, radiological, and cerebrospinal fluid analysis of 326 cases

Roderick P. P. W. M. Maas¹ · Annemarie H. G. Muller-Hansma² ·
Rianne A. J. Esselink¹ · Jean-Luc Murk³ · Clemens Warnke⁴ · Joep Killestein⁵ ·
Mike P. Wattjes⁶

Received: 1 March 2016/Revised: 22 June 2016/Accepted: 23 June 2016/Published online: 11 July 2016
© The Author(s) 2016. This article is published with open access at Springerlink.com

Abstract The implementation of a variety of immunosuppressive therapies has made drug-associated progressive multifocal leukoencephalopathy (PML) an increasingly prevalent clinical entity. The purpose of this study was to investigate its diagnostic characteristics and to determine whether differences herein exist between the multiple sclerosis (MS), neoplasm, post-transplantation, and autoimmune disease subgroups. Reports of possible, probable, and definite PML according to the current diagnostic criteria were obtained by a systematic search of PubMed and the Dutch pharmacovigilance database. Demographic, epidemiologic, clinical, radiological, cerebrospinal fluid (CSF), and histopathological features were extracted from each report and differences were compared between the disease

categories. In the 326 identified reports, PML onset occurred on average 29.5 months after drug introduction, varying from 14.2 to 37.8 months in the neoplasm and MS subgroups, respectively. The most common overall symptoms were motor weakness (48.6 %), cognitive deficits (43.2 %), dysarthria (26.3 %), and ataxia (24.1 %). The former two also constituted the most prevalent manifestations in each subgroup. Lesions were more often localized supratentorially (87.7 %) than infratentorially (27.4 %), especially in the frontal (64.1 %) and parietal lobes (46.6 %), and revealed enhancement in 27.6 % of cases, particularly in the MS (42.9 %) subgroup. Positive JC virus results in the first CSF sample were obtained in 63.5 %, while conversion after one or more negative outcomes occurred in 13.7 % of cases. 52.2 % of patients died, ranging from 12.0 to 83.3 % in the MS and neoplasm subgroups, respectively. In conclusion, despite the heterogeneous nature of the underlying diseases, motor weakness and cognitive changes were the two most common manifestations of drug-associated PML in all subgroups. The frontal and parietal lobes invariably constituted the predilection sites of drug-related PML lesions.

Electronic supplementary material The online version of this article (doi:[10.1007/s00415-016-8217-x](https://doi.org/10.1007/s00415-016-8217-x)) contains supplementary material, which is available to authorized users.

✉ Roderick P. P. W. M. Maas
roderick.maas@radboudumc.nl

¹ Department of Neurology, Donders Institute for Brain, Cognition, and Behaviour, Radboud University Medical Center, Route 935, PO Box 9101, 6500 HB Nijmegen, The Netherlands

² Netherlands Pharmacovigilance Center Lareb, 's-Hertogenbosch, The Netherlands

³ Department of Medical Microbiology, University Medical Center Utrecht, Utrecht, The Netherlands

⁴ Department of Neurology, Medical Faculty, Heinrich Heine University, Düsseldorf, Germany

⁵ Department of Neurology, VU Medical Center, Amsterdam, The Netherlands

⁶ Department of Radiology and Nuclear Medicine, VU Medical Center, Amsterdam, The Netherlands

Keywords Progressive multifocal leukoencephalopathy · Medication · Drugs · Side effect · Adverse event

Introduction

Progressive multifocal leukoencephalopathy (PML) is a JC virus (JCV) related demyelinating disorder of the central nervous system that occurs almost exclusively in immunocompromised patients [1]. It is characterized histopathologically by a lytic infection of oligodendrocytes, astrocytes, and/or neurons in the white matter, cortical gray matter, and/or gray-white matter junction giving

rise to a plethora of clinical phenotypes [2]. Quintessential radiological lesions are hyperintense on T2-weighted and FLAIR images and hypointense on T1-weighted images. In 2013, diagnostic criteria have been established which include clinical, imaging, laboratory, and histopathological features. Prerequisite for a definite diagnosis of PML is either the presence of characteristic pathoanatomic findings in a biopsy specimen or a combination of the appropriate clinical symptoms, radiological features, and the detection of JCV DNA in cerebrospinal fluid (CSF) [3]. Cases that do not fulfill these criteria might be classified as possible or probable PML and may be missed in official statistics.

PML has traditionally been associated with an intrinsically compromised immune system. In the past few years, a considerable number of immunosuppressive drugs has been approved by the authorities and implemented into clinical practice to broaden the therapeutic spectrum of a variety of medical conditions [4–6]. Consequently, medication-associated PML has become an increasingly prevalent clinical entity, as reflected by an exponential increase in the number of published cases (Fig. 1). Because of the frequently poor prognosis of PML, it is of paramount importance to establish this diagnosis at an early stage. However, a comprehensive, quantitative analysis of the clinical, radiological, and CSF features of drug-associated PML and its subgroups, based on the underlying disease categories, has never been conducted thus far. Nevertheless, for an early diagnosis it is crucial for clinicians across various specialties to be aware of the preferential clinical

and radiological presentation and the potential differences herein between the subgroups. In this study, we aimed to address this urgent medical need for advances in knowledge on drug-associated PML by outlining its specific clinical, radiological, and CSF characteristics. A quantitative assessment of the degree of association between any particular drug and PML has been reported previously, and therefore fell beyond the scope of this paper [7].

Methods

Inclusion of published reports

References were identified by means of a three-step PubMed search conducted on August 30, 2015 (Fig. 2). To obtain a first inventory of the drugs that might trigger PML occurrence, the search terms ‘progressive multifocal leukoencephalopathy’, ‘drug induced’, ‘chemically induced’, ‘medication induced’, ‘adverse event’, ‘adverse effect’, and ‘side effect’ were used in the ‘all fields’ menu without limits of time. Second, combinations of ‘progressive multifocal leukoencephalopathy’ and the names of each of the individual drugs that had been identified in the first step were applied to collect all reports of potentially drug-associated PML. Finally, reference lists of all included articles were screened for any additional relevant reports.

We included cases of possible, probable, and definite PML according to the current American Academy of Neurology criteria [3] that were published in English language journals in case reports, case series, clinical trials, editorials, letters, meta-analyses, and observational studies. In addition, articles were included when they described a simultaneous immune reconstitution inflammatory syndrome (IRIS), either occurring already during treatment with or only after withdrawal of the causative drug. With respect to the latter, IRIS was defined as deterioration of neurologic deficits following drug removal, corroborated by inflammatory changes on neuroimaging [8]. Articles were excluded if an identical case had already been described in a previous report, when PML was not related to a drug, or if an alternative diagnosis was more likely, e.g., posterior reversible encephalopathy syndrome (PRES) associated with tacrolimus, cyclosporine, cisplatin, and methotrexate. Finally, cases of medication-related granule cell neuronopathy were excluded [9, 10]. When imaging features played a pivotal role in the distinction between ‘possible PML’ and ‘not PML’, the decision of inclusion or exclusion was made after analysis by an experienced neuroradiologist with special expertise in the field of inflammatory diseases of the central nervous system (MPW).

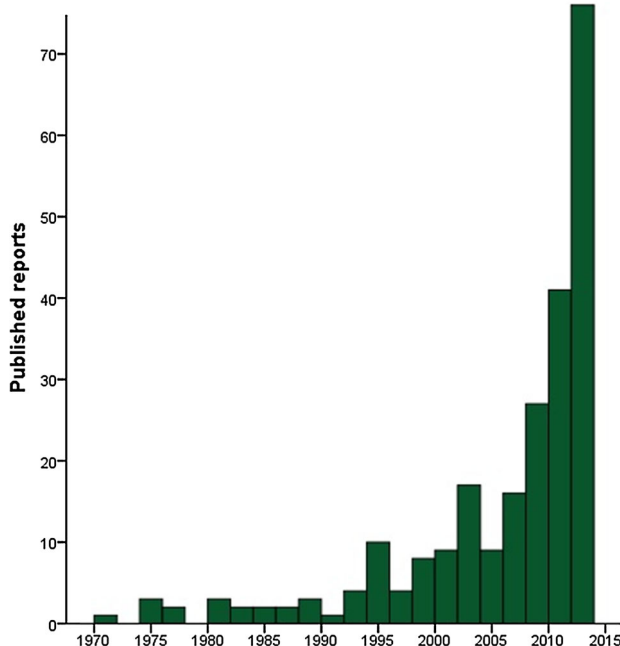


Fig. 1 Number of published reports on drug-associated PML throughout the years, as included in this paper

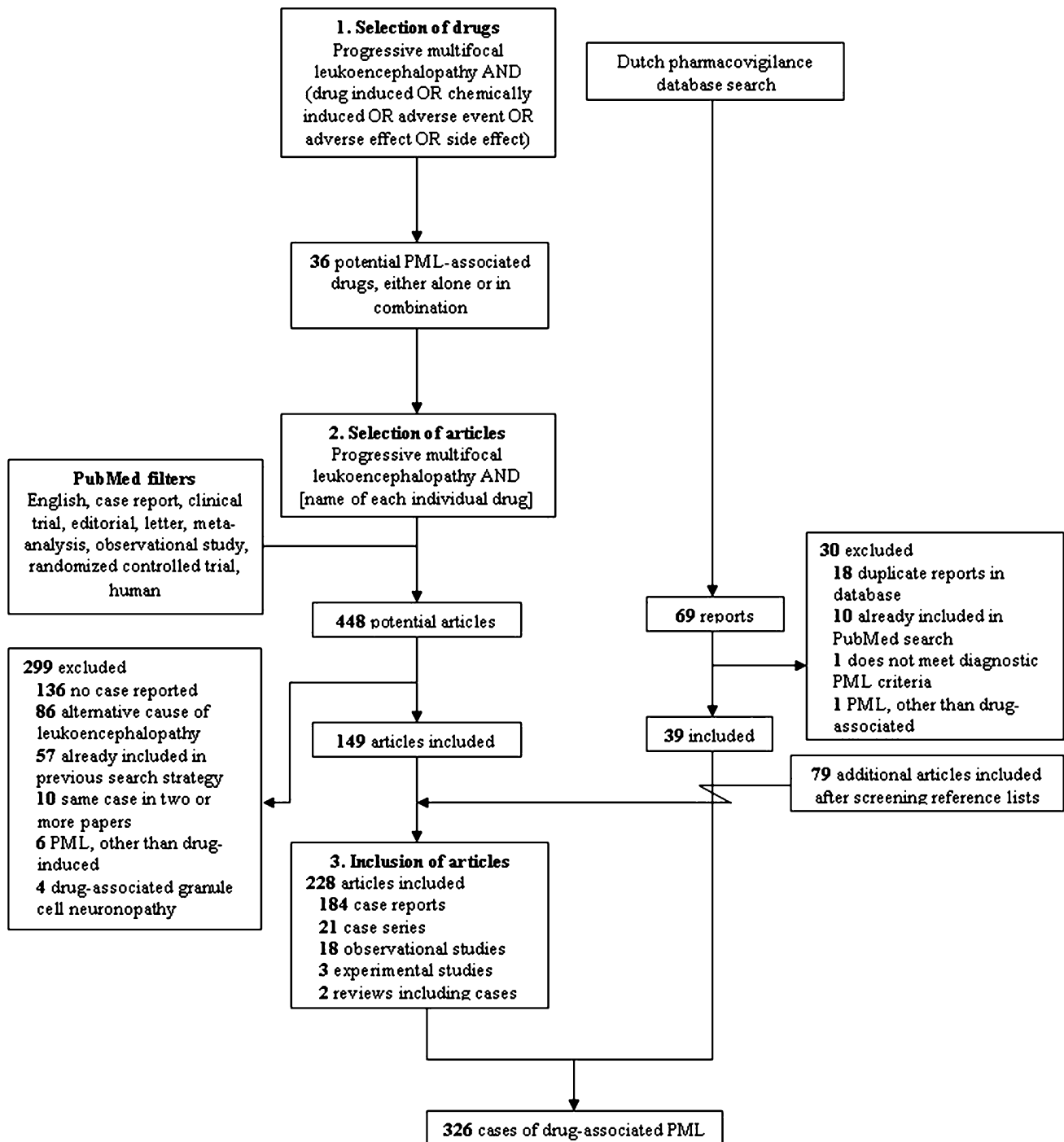


Fig. 2 Flowchart of the search strategy, selection, and inclusion of articles and reports from the Dutch pharmacovigilance database

Dutch pharmacovigilance database

In addition to the cases published in the literature, reports on medication-associated PML were obtained by querying the database of the Netherlands Pharmacovigilance Centre

Lareb. This database contains detailed accurately verified information of adverse drug reactions reported by Dutch healthcare professionals and manufacturers. Care was taken to exclude duplicates that had already been included in the literature search.

Data acquisition

The following data, when available, were extracted from each report: study type, number of cases, age, sex, underlying disease, immunosuppressive agent(s), time elapsed between drug introduction and either first symptoms or asymptomatic radiological findings that could be attributed to PML in retrospect, mortality rate (and time from first symptoms to death), and clinical, radiological, CSF, and histopathological features. When a combination of therapies rather than a single pharmaceutical was presumed to be responsible for the phenotype, the most likely contributing drugs—based on mechanism of action, dose, and duration of use—were noted up to a maximum of three. The localization of PML lesions was determined by the description provided by the authors of each report and the MR and/or CT images shown, if any. In addition, the presence of contrast enhancement, its distribution pattern (i.e., patchy, punctate, homogeneous, or unknown), and the dissemination pattern of lesions were listed. With respect to the latter, we distinguished between unilobar, multilobar (i.e., two or more contiguous lobes affected), and widespread (i.e., two or more noncontiguous lobes affected and/or the presence of lesions in both hemispheres). For the sake of clinical relevance and vigilance, symptoms and radiological lesions that appeared after establishing the diagnosis of PML, attributable to either progression of the disease or a consecutive emerging IRIS, were excluded.

Statistical analysis

Differences between the four subgroups, based on the underlying disease categories, were analyzed using Chi-square tests and one-way ANOVA. Post-hoc Bonferroni corrections have been applied and significance levels were set at 0.0083 (i.e., 0.05/6). Due to the conservative nature of the Bonferroni method [11], it seems likely that potential differences between the subgroups represent genuine dissimilarities rather than mere coincidence.

Results

Demographic and epidemiologic features

The literature search yielded 287 cases of drug-related PML in 184 case reports, 21 case series, 18 observational studies, three experimental studies, and two review articles [12–239]. Furthermore, an additional 39 reports were identified in the Dutch pharmacovigilance database, resulting in a total number of 326 documented cases. In eight cases, consensus was reached after initial doubt on the diagnosis of PML; five of them have been included, while the remaining

three were finally labeled as ‘not PML’. Natalizumab, predniso(lo)ne, (dimethyl) fumarate, fludarabine, rituximab, and brentuximab vedotin were the most common single agents that have been demonstrated to trigger PML (Online Resource 1). Additionally, glucocorticoids with either azathioprine or cyclophosphamide and a regime containing four or more pharmaceuticals [usually courses of chemotherapy, frequently including rituximab (R-CHOP)] comprised the most prevalent composite culprits. The multifarious underlying diseases could be subdivided into four main categories, i.e. multiple sclerosis (MS), (other) immune-mediated disorders, neoplasms (93.8 % lymphoproliferative, 3.1 % myeloproliferative, 2.1 % solid neoplasm, 1.0 % unknown), and the post-transplantation setting (Fig. 3). Because of the relatively large number of natalizumab-associated PML cases, the former was not included in the group of immune-mediated diseases, but rather considered a distinct entity. As immunosuppressive drugs are also frequently used in the prevention of relapses in neuromyelitis optica spectrum disorder after a first episode, one might expect drug-associated PML to have been described in this patient population. However, no such reports have been identified in our search. The most common drugs associated with PML per subgroup are summarized in Online Resource 2. In general, there was considerably few drug overlap between the various disease categories, an exception being the combination of azathioprine and glucocorticoids which was used in both autoimmune disorders and the post-transplantation setting.

The age and sex distribution of drug-related PML among the subgroups were in accordance with the epidemiologic features of the particular diseases, with a higher percentage of younger women and older men in the MS and neoplasm subgroups, respectively (Table 1). The mean time elapsed from introduction of the drug(s) to first symptoms was 28.9 (95 % CI 25.5–32.2) months, while the time span to the occurrence of asymptomatic lesions (only in natalizumab-induced PML) was found to be 36.4 (95 % CI 27.0–45.9) months. Significantly shorter periods were observed in the neoplasm group [mean 14.2 months (95 % CI 9.3–19.2)] compared to the three other disease categories ($p < 0.001$). A delay of several weeks to even months between the occurrence of first symptoms and the final diagnosis of PML was noticed in a considerable number of cases [23, 28, 50, 67, 78, 101, 103, 117, 122, 149, 158, 185, 201, 213, 223, 224, 226, 233, 235, 236]. This diagnosis was established on combined clinical, radiological, and CSF grounds in 69.4 % of cases. In the remaining 30.6 %, histopathological analysis was necessary to provide a greater degree of certainty, either because PCR for JCV in the CSF was not available or (repeatedly) negative. Brain biopsies were conducted most commonly in patients with underlying autoimmune diseases (43.8 %) and neoplasms (47.8 %), but in only

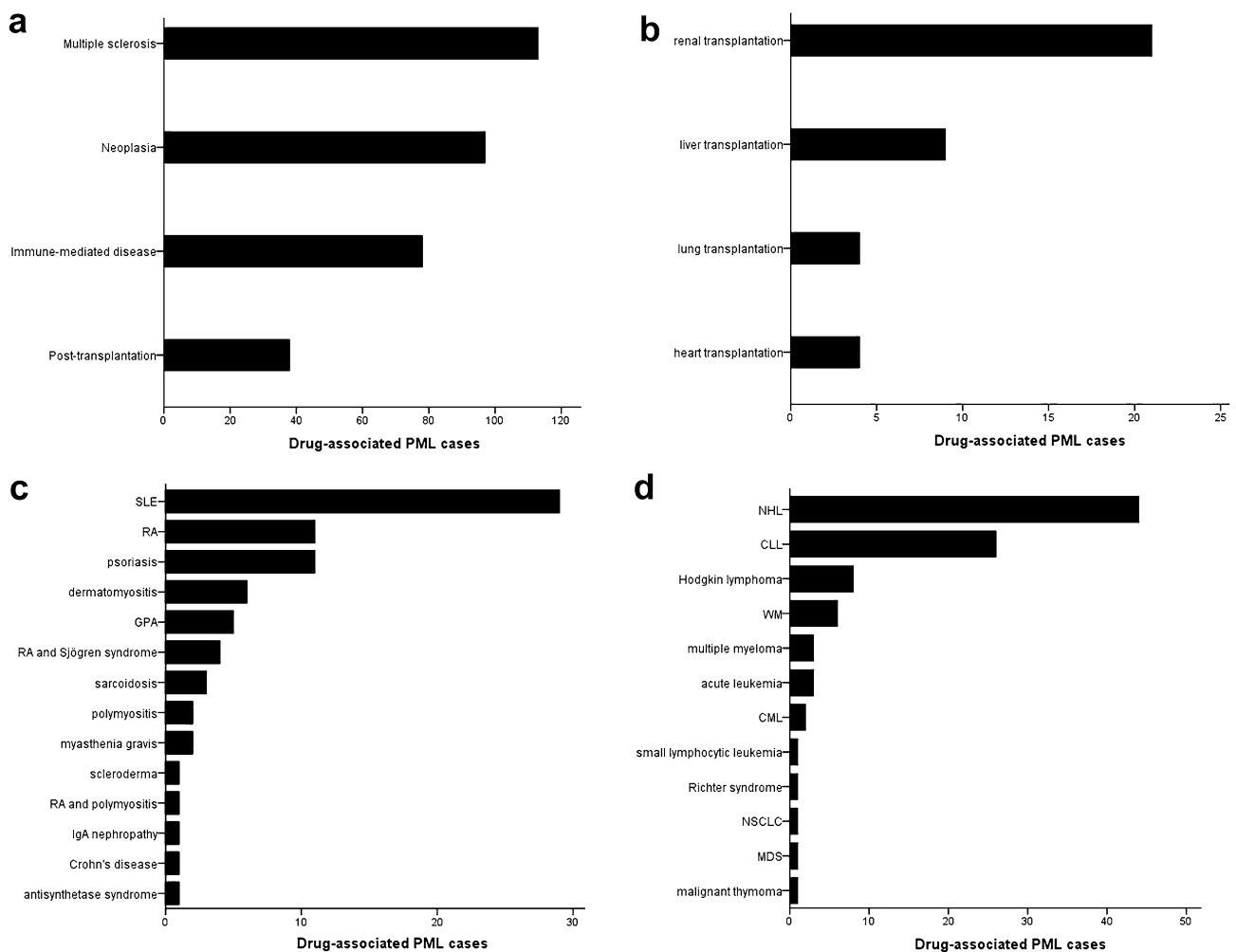


Fig. 3 Distribution of cases of drug-associated progressive multifocal leukoencephalopathy among the major disease categories (**a**) and subdivisions of the post-transplantation setting (**b**), the autoimmune diseases (**c**), and the neoplasms (**d**). Because of the large number of natalizumab-associated PML cases, multiple sclerosis was considered a distinct entity and was not included in the group of autoimmune

8.3 % of natalizumab-induced PML cases. The overall mortality rate was 52.2 % (95 % CI 46.5–58.0 %), with values of 12.0 % (95 % CI 5.2–18.7 %), 56.2 % (95 % CI 44.5–67.8 %), 83.3 % (95 % CI 75.5–91.2 %), and 68.4 % (95 % CI 52.9–83.9 %) in the MS, immune-mediated, neoplasm and post-transplantation subgroups, respectively.

Clinical characteristics

In descending order of magnitude, the most common overall symptoms and signs of drug-related PML were motor weakness (48.6 %), cognitive deficits (43.2 %), dysarthria (26.3 %), ataxia (24.1 %), aphasia (22.7 %), and behavioral changes (21.9 %) (Table 2). Although some deviations were observed between the subgroups, motor

disorders. *CML* chronic myeloid leukemia, *CLL* chronic lymphocytic leukemia, *GPA* granulomatosis with polyangiitis (formerly Wegener's disease), *MDS* myelodysplastic syndrome, *NHL* non-Hodgkin lymphoma, *NSCLC* non-small-cell lung cancer, *RA* rheumatoid arthritis, *SLE* systemic lupus erythematosus, *WM* Waldenström's macroglobulinemia

weakness and cognitive changes constituted the two most frequently encountered symptoms in all disease categories. Behavioral changes were significantly more common in the post-transplantation group than in any of the other disease categories (MS $p < 0.001$, immune-mediated disorders $p = 0.001$, neoplasms $p = 0.002$). The highest prevalences of cognitive deficits and seizures were also found in this disease category (60.0 and 22.9 %, respectively). Symptoms and signs of cerebellar and brainstem involvement, i.e., ataxia, vertigo, eye movement disorders, and dysphagia tended to be more prevalent in the group of autoimmune disorders. Furthermore, dysarthria, gait abnormalities and sensory deficits (37.3, 26.9, and 20.9 %, respectively) occurred most commonly in the group of immune-mediated diseases. A notable feature of drug-related PML

Table 1 Demographic and epidemiologic features of drug-associated progressive multifocal leukoencephalopathy

	Multiple sclerosis ^a	Autoimmune diseases	Neoplasms	Post-transplantation	Total
Number of cases	113	78	97	38	326
Literature	89 (31.0)	75 (26.1)	86 (30.0)	37 (12.9)	287
Lareb	24 (61.5)	3 (7.7)	11 (28.2)	1 (2.6)	39
Age (years)	45.0 ± 10.4* [#]	54.5 ± 14.2*	58.9 ± 12.4 ^{#¶}	49.7 ± 14.3 [¶]	52.2 ± 13.7
Sex (% male)	41/111 (36.9) ^{¶†}	27/76 (35.5)* [#]	57/92 (62.0)* ^{¶¶}	25/38 (65.8) ^{#¶}	150/317 (47.3)
Time to PML onset (months)	37.8 ± 17.0 [#]	30.6 ± 20.5*	14.2 ± 21.4* ^{#¶}	34.9 ± 37.6 [¶]	29.5 ± 24.4
To first symptoms	38.0 ± 17.5 [#]	30.6 ± 20.5*	14.2 ± 21.4* ^{#¶}	34.9 ± 37.6 [¶]	28.8 ± 25.3
To “silent” MRI lesions ^b	36.4 ± 12.2	N/A	N/A	N/A	36.4 ± 12.2
Diagnosis (%)					
Clinical–MRI–CSF	97/98 (99.0)* ^{#¶}	42/73 (57.5)*	52/93 (55.9) [#]	18/37 (48.6) [¶]	209/301 (69.4)
Histopathology	1/98 (1.0)* ^{#¶}	31/73 (42.5)*	41/93 (44.1) [#]	19/37 (51.4) [¶]	92/301 (30.6)
PML classification (%)					
Possible	11/99 (11.1)	4/76 (5.3)	9/94 (9.6)	3/38 (7.9)	27/307 (8.8)
Probable	12/99 (12.1)* ^{#¶}	0/76 (0.0)*	1/94 (1.1) [#]	0/38 (0.0) [¶]	13/307 (4.2)
Definite	75/99 (75.8)	63/76 (82.9)	79/94 (84.0)	28/38 (73.7)	245/307 (79.8)
Unknown	1/99 (1.0)*	9/76 (11.8)	5/94 (5.3)	7/38 (18.4)*	22/307 (7.2)
Mortality rate (%)	11/92 (12.0)* ^{#¶}	41/73 (56.2)* [†]	75/90 (83.3) ^{#†}	26/38 (68.4) [¶]	153/293 (52.2)
Time to death (months)	5.2 ± 3.2	7.0 ± 10.4	3.9 ± 4.5	3.4 ± 3.6	4.8 ± 6.7

Categorical data have been displayed as frequency (percentage), continuous data as mean ± standard deviation

#, *, ¶, † significant differences between subgroups ($p < 0.05/6 = 0.0083$)

^a Because of the large number of natalizumab-associated PML cases, multiple sclerosis was considered a distinct entity and was not included in the group of autoimmune disorders

^b Asymptomatic PML cases were only observed in natalizumab-treated patients

among the neoplasms was the high prevalence of visual deficits (25.8 %), especially when compared to the autoimmune disorders ($p = 0.001$). Asymptomatic PML cases were only observed in natalizumab-treated patients (10.3 %).

Radiological findings

Whereas infratentorial lesions were present in 27.4 % of cases, drug-associated PML was considerably more prevalent in the supratentorial brain (87.7 %) (Table 3). In all disease categories, lesions were most often situated in the frontal and parietal lobes (64.1 and 46.6 %, respectively). The temporal (21.4 %) and occipital (22.7 %) lobes were less commonly affected. Involvement of the latter, however, was observed relatively frequently in the neoplasm subgroup (36.2 %), in particular when compared to the autoimmune and MS groups ($p = 0.003$ and $p = 0.01$, respectively). Infratentorial lesion localization was especially prevalent in drug-related PML associated with immune-mediated disorders, with cerebellar involvement being significantly more common than in the MS and neoplasm categories ($p = 0.001$ and $p = 0.007$, respectively). Furthermore, there was a trend towards a higher

level of brainstem involvement in the group of autoimmune diseases (MS $p = 0.013$; neoplasm $p = 0.077$). In the natalizumab-induced PML subgroup, lesions were most commonly distributed in one lobe (42.9 % vs. 21.4 % multilobar and 27.1 % widespread). In contrast, widespread dissemination was by far the most frequently encountered pattern in the remaining three disease categories (autoimmune disorders 52.5 %, neoplasms 52.1 %, post-transplantation 68.0 %). Contrast enhancement was present in 27.6 % of cases, particularly in the natalizumab-induced (42.9 %) and post-transplantation (31.6 %) subgroups. In the former, punctate and patchy enhancement patterns were observed to an equal extent (19.6 %). In the other subgroups, only patchy contrast enhancement was found.

CSF results

JCV DNA remained (repeatedly) undetectable in 22.7 % (95 % CI 17.3–28.1 %) of drug-associated PML cases. Furthermore, nearly one out of each seven patients (13.7 %; 95 % CI 9.3–18.1 %) initially displayed one or more negative outcomes before PCR finally converted to positive, ranging from 4.8 % in the post-transplantation (95 % CI 0.0–14.7 %) subgroup to 21.1 % (95 % CI

Table 2 Clinical characteristics of drug-associated progressive multifocal leukoencephalopathy

	Multiple sclerosis (<i>n</i> = 87)	Autoimmune diseases (<i>n</i> = 67)	Neoplasms (<i>n</i> = 89)	Post-transplantation (<i>n</i> = 35)	Total (<i>n</i> = 278)
Motor weakness ^a	34 (39.1)	34 (50.7)	49 (55.1)	18 (51.4)	135 (48.6)
Cognitive deficits ^b	30 (34.5)	25 (37.3)	44 (49.4)	21 (60.0)	120 (43.2)
Dysarthria	13 (14.9)*	25 (37.3)*	27 (30.3)	8 (22.9)	73 (26.3)
Ataxia	14 (16.1)	21 (31.3)	23 (25.8)	9 (25.7)	67 (24.1)
Aphasia ^c	20 (23.0)	19 (28.4)	20 (22.5)	4 (11.4)	63 (22.7)
Behavioral change ^d	14 (16.1) [#]	12 (17.9)*	18 (20.2) [¶]	17 (48.6) ^{#*¶}	61 (21.9)
Gait abnormalities	14 (16.1)	18 (26.9)	13 (14.6)	5 (14.3)	50 (18.0)
Visual deficits ^e	10 (11.5)	4 (6.0)*	23 (25.8)*	6 (17.1)	43 (15.5)
Sensory deficits	7 (8.0)	14 (20.9) [#]	5 (5.6) [#]	6 (17.1)	32 (11.5)
Seizure	9 (10.3)	5 (7.5)	6 (6.7)	8 (22.9)	28 (10.1)
Facial palsy	5 (5.7)	10 (14.9)	6 (6.7)	6 (17.1)	27 (9.7)
Dysphagia	2 (2.3)	8 (11.9)	6 (6.7)	4 (11.4)	20 (7.2)
Apraxia	3 (3.4)	3 (4.5)	11 (12.4)	2 (5.7)	19 (6.8)
Vertigo	4 (4.6)	6 (9.0)	3 (3.4)	3 (8.6)	16 (5.8)
Eye movement disorders ^f	2 (2.3)	6 (9.0)	8 (9.0)	0 (0.0)	16 (5.8)
Headache	2 (2.3)	3 (4.5)	3 (3.4)	3 (8.6)	11 (4.0)
Parkinsonism ^g	1 (1.1)	6 (9.0)	2 (2.2)	2 (5.7)	11 (4.0)
Depression	4 (4.6)	2 (3.0)	1 (1.1)	1 (2.9)	8 (2.9)
Asymptomatic	9 (10.3) [#]	0 (0.0) [#]	0 (0.0)*	0 (0.0)	9 (3.2)

Data have been displayed as frequency (percentage)

Because of the large number of natalizumab-associated PML cases, multiple sclerosis was considered a distinct entity and was not included in the group of autoimmune disorders

^a Monoparesis, hemiparesis, tetraparesis, hemiplegia, and tetraplegia

^b Confusion and memory deficits

^c True aphasia and word finding difficulties

^d Personality changes, apathy, lethargy, and agitation

^e Visual field defects and reduced visual acuity

^f Ophthalmoparesis, strabismus, and diplopia

^g Tremor, bradykinesia, and 'parkinsonism'

[#], *, [¶] significant differences between subgroups ($p < 0.05/6 = 0.0083$)

12.7–29.4 %) in the MS subgroup. Positive results in the first CSF sample were obtained in 63.5 %. Pleocytosis was present in 10.9 % of patients, especially in the neoplasm group (17.1 %).

Discussion

Despite the exponential increase in the number of drug-associated PML cases throughout the years, a comprehensive, quantitative analysis of its diagnostic characteristics that also takes into account the differences between the various underlying disease categories has not been performed thus far. Our study demonstrates that motor weakness and cognitive deficits are the most common presenting symptoms in all subgroups. Several

dissimilarities were observed, however, between the disease categories in the remaining clinical manifestations. While behavioral and cognitive changes were most prevalent among the post-transplantation group, cerebellar and brainstem symptoms occurred most commonly in the autoimmune category. Visual disturbances appeared most frequently in drug-related PML associated with neoplasms. However, a sound explanation for these differences seems to be missing.

Because of the frequently grim prognosis and lethal outcomes, it is of paramount importance to consider the diagnosis of medication-associated PML at an early stage during treatment with immunosuppressive drugs. The clinical phenotype in the articles reviewed, however, was not seldom initially misinterpreted as an exacerbation or the cerebral manifestations of the underlying disease, i.e.,

Table 3 Radiological and cerebrospinal fluid features of drug-associated progressive multifocal leukoencephalopathy

	Multiple sclerosis ^a	Autoimmune diseases	Neoplasms	Post-transplantation	Total
Radiological features					
Supratentorial	66/72 (91.7)	46/61 (75.4)*	71/76 (93.4)*	24/27 (88.9)	207/236 (87.7)
Frontal lobe	49/69 (71.0)	32/57 (56.1)	43/69 (62.3)	17/25 (68.0)	141/220 (64.1)
Parietal lobe	22/69 (31.9)	31/58 (53.4)	36/69 (52.2)	14/25 (56.0)	103/221 (46.6)
Temporal lobe	9/69 (13.0)	12/57 (21.1)	21/69 (30.4)	5/25 (20.0)	47/220 (21.4)
Occipital lobe	10/69 (14.5) [#]	9/57 (15.8)	25/69 (36.2) [#]	6/25 (24.0)	50/220 (22.7)
Basal ganglia	1/69 (1.4)	3/57 (5.3)	3/69 (4.3)	3/25 (12.0)	10/220 (4.5)
Thalamus	3/69 (4.3)	6/58 (10.3)	8/69 (11.6)	3/25 (12.0)	20/221 (9.0)
Capsula interna	3/69 (4.3)	4/59 (6.8)	2/69 (2.9)	3/25 (12.0)	12/222 (5.4)
Corpus callosum	2/69 (2.9)	3/59 (5.1)	6/69 (8.7)	2/25 (8.0)	13/222 (5.9)
Infratentorial	13/69 (18.8)*	25/60 (41.7)*	15/69 (21.7)	8/25 (32.0)	61/223 (27.4)
Cerebellum	8/69 (11.6)*	21/60 (35.0)* [#]	10/69 (14.5) [#]	6/25 (24.0)	45/223 (20.2)
Brain stem	7/69 (10.1)	16/59 (27.1)	10/69 (14.5)	5/25 (20.0)	38/222 (17.1)
Lesion distribution					
Unilobar	30/70 (42.9)* [#]	13/59 (22.0)	13/71 (18.3)*	1/25 (4.0) [#]	57/225 (25.3)
Multilobar	15/70 (21.4)	13/59 (22.0)	17/71 (23.9)	6/25 (24.0)	51/225 (22.7)
Widespread	19/70 (27.1)* ^{#¶}	31/59 (52.5)*	37/71 (52.1) [#]	17/25 (68.0) [¶]	104/225 (46.2)
Unknown	6/70 (8.6)	2/59 (3.4)	4/71 (5.6)	1/25 (4.0)	13/225 (5.8)
Contrast enhancement					
Punctate	11/56 (19.6)* [#]	0/43 (0.0)*	0/45 (0.0) [#]	0/19 (0.0)	11/163 (6.7)
Patchy	11/56 (19.6)	3/43 (7.0)	8/45 (17.8)	4/19 (21.1)	26/163 (16.0)
Homogeneous	1/56 (1.8)	0/43 (0.0)	0/45 (0.0)	0/19 (0.0)	1/163 (0.6)
Unknown	1/56 (1.8)	2/43 (4.7)	2/45 (4.4)	2/19 (10.5)	7/163 (4.3)
CSF features					
PCR JC virus					
Negative	11/95 (11.6) [#]	15/53 (28.3)	21/64 (32.8) [#]	6/21 (28.6)	53/233 (22.7)
Directly positive	64/95 (67.4)	31/53 (58.5)	39/64 (60.9)	14/21 (66.7)	148/233 (63.5)
Positive after ≥2 LPs	20/95 (21.1)*	7/53 (13.2)	4/64 (6.3)*	1/21 (4.8)	32/233 (13.7)
Leukocytes/ul					
0–4	17/19 (89.5)	38/41 (92.7)	34/41 (82.9)	17/18 (94.4)	106/119 (89.1)
≥5	2/19 (10.5)	3/41 (7.3)	7/41 (17.1)	1/18 (5.6)	13/119 (10.9)

Data have been displayed as frequency (percentage)

LP lumbar puncture

*, #, ¶ significant differences between subgroups ($p < 0.05/6 = 0.0083$)

^a Because of the large number of natalizumab-associated PML cases, multiple sclerosis was considered a distinct entity and was not included in the group of autoimmune disorders

an MS relapse, neuropsychiatric lupus, or central nervous system vasculitis [23, 28, 50, 67, 78, 101, 103, 117, 122, 149, 158, 185, 201, 213, 223, 224, 226, 233, 235, 236]. It was only after further clinical and radiological worsening upon high doses of immunosuppressive therapies that the possibility of PML was considered in these cases. Apart from the intrinsically dismal prognosis of PML, this delay of several weeks to even months and additional assault on the immune system certainly may have contributed to the high mortality rate. Sometimes, acute symptoms and signs were attributed to cerebral infarctions [21, 38, 109]. Finally, ocular and vestibular symptoms have occasionally

been misjudged as cataract and Meniere’s disease, respectively [45, 120, 155]. It is possible that PML symptoms have been misinterpreted in these cases because of the relatively long interval between drug introduction and first central nervous system deficits, on average almost 2.5 years.

The differential diagnosis of medication-associated PML depends on the context in which the specific immunosuppressive drug is applied. In the post-transplantation setting, it is important to distinguish between drug-associated PML and PRES, which usually affects the parieto-occipital lobes and frequently resolves

spontaneously after withdrawal of the culprit(s). In MS patients, on the other hand, the distinction between a relapse and natalizumab-induced PML can be particularly troublesome. A correct and early diagnosis, however, has important therapeutic and prognostic implications. In this regard, several clinical and MRI features may direct the physician to the right diagnosis. Acute spinal cord or brainstem presentations and focal, sharp-edged, periventricular locations are generally more frequently encountered in an MS exacerbation. In contrast, PML is characterized by a subacute onset, progressive nature of (sub)cortical symptoms, and large, ill-defined, confluent T2-weighted lesions, deep gray matter involvement, and/or crescent cerebellar lesions [240, 241]. This study confirms these findings, the most common natalizumab-associated PML symptoms being motor weakness, cognitive deficits, and aphasia, and lesions mainly localized in the frontal and parietal lobes. Isolated brainstem involvement, however, does not exclude PML at all [201, 233]. New imaging procedures such as the application of susceptibility weighted imaging and ultra high-field 7 Tesla MRI have shown promising preliminary data in the distinction between PML and MS lesions and might finally play a pivotal role when regular techniques fail to attain full assurance [242]. However, further work is required before they can be implemented in everyday clinical practice.

Due to the raised level of radiological vigilance in natalizumab-treated patients including high-frequency MRI monitoring according to recent expert opinion guidelines [243, 244], cases of PML diagnosed at an asymptomatic stage are identified with increasing frequency [19, 27, 123, 137, 153, 162, 221]. These cases are only classified as probable PML in the presence of JCV DNA in the CSF detected by PCR, indicating the conservative nature of the current diagnostic criteria [3]. The predicament of negative or inconclusive results across different laboratories in view of asymptomatic patients displaying MRI lesions has been touched upon previously [221] and stresses the need of a revision of the diagnostic PML criteria.

Definitive establishment of the PML diagnosis was hampered by initially negative PCR outcomes in CSF samples in nearly one out of each seven patients before it finally converted to positive. These results are strongly dependent on the disease stage and the characteristics of the assay, especially its lower detection limit, the sensitivity of the older assays being approximately 75 % [3]. Samples were frequently analyzed not only in the institute's own laboratory, but also in external facilities, with the National Institutes of Health laboratory being the one with the most ultrasensitive assay (i.e., a detection limit of 10 JCV DNA copies per milliliter). Thus, physicians need to be aware that the lack of detection of JCV DNA in CSF

does not preclude the diagnosis of PML. Repeated lumbar punctures, follow-up MRI, and possibly additional techniques currently under evaluation such as the assessment of anti-JCV antibodies in CSF [245], and in a proportion of cases, biopsy may be required to confirm the diagnosis of PML.

A clear radiological anterior-posterior gradient was observed, with the frontal and parietal lobes being more often involved than their temporal and occipital counterparts. A widespread lesion distribution pattern was found to be most common in drug-related PML associated with autoimmune disorders, neoplasms, and the post-transplantation setting, while (asymptomatic) unilobar involvement was most often observed in the natalizumab-induced subgroup. Contrast enhancement was present in about one fourth of cases of drug-associated PML, especially in the MS and post-transplantation subgroups. Although the underlying mechanisms and evolution of this 'inflammatory PML' variant remain to be elucidated, experimental evidence in natalizumab-induced PML suggests that lymphocyte trafficking continues to occur via alternative pathways due to upregulation of different adhesion molecules, thereby inducing a state of incomplete immune surveillance [246].

In contrast to what its name may suggest, the thalamus and basal ganglia—obviously deep gray matter structures—were involved in the PML disease process in 9.0 and 4.5 % of cases, respectively. Berger et al. previously demonstrated lesions in these areas in 14 and 12 % in PML associated with human immunodeficiency virus [247]. Furthermore, seizures which are generally assumed to be generated by synchronous cortical activity were present in 10.1 % of patients. In previous studies, even higher prevalences of 18 and 34.7 % were found, with causative PML lesions being situated adjacent to the T1-hyperintense cerebral cortical gray matter [248, 249]. It can be inferred from both observations that the 'leukoencephalopathy' phrase in the term PML, suggesting a white matter disease, is actually kind of a misnomer and rather confusing for clinicians who are not familiar with this disease.

The discrepancies in survival between the different categories of PML—not only the drug-associated cases, but also the ones related to an intrinsically compromised immune system—can probably be explained by their various degrees of 'generalized' immunosuppression. The more specific the immune system is targeted, the lower the mortality rate in general. We demonstrated a significantly lower mortality rate in the natalizumab-induced PML subgroup compared to the other disease categories and found the highest value in the neoplasm subgroup. As natalizumab impedes the interaction between alpha-4 integrin on lymphocytes and vascular cell adhesion molecule 1 on the endothelium of the vessel wall, it specifically

prevents the diapedesis of these cells through the blood brain barrier without reducing the total number of leukocytes in the blood or their function. Therefore, in contrast to the various antineoplastic agents and immunosuppressive drugs used in cancer and the post-transplantation setting, the immune system may be more specifically suppressed. Depression of the immune system may not only result from the drugs administered, but is also an intrinsic consequence of the disease process in hematological malignancies which accounts for the highest mortality rate in this subgroup. Furthermore, the high level of radiological vigilance and occurrence of asymptomatic PML cases among MS patients treated with natalizumab frequently led to a quick drug suspension which probably contributed to a better prognosis.

Several intrinsic limitations of this study need to be addressed. Although we identified a large number of reports, not all cases of medication-related PML are published in the literature, especially when the association between the drug and the side effect has been described before. Therefore, our study design does not allow calculating the treatment-related risk of developing PML for each specific drug. Second, the contrast between underreporting in the oncology field on the one hand and the high clinical and radiological vigilance in MS and autoimmune disorders on the other has possibly led to a skewed distribution of published cases. Furthermore, the causal relationship between the mentioned drugs and PML may have been blurred by a variety of reasons. First, a state of immunosuppression could have already been present as a result of the underlying disease itself, e.g., due to lymphopenia in SLE, sarcoidosis, or leukemia. Indeed, PML has been described in these disorders in the absence of immunosuppressive medication [250, 251]. Therefore, it seems plausible to assume that PML in the group of neoplasms and in some but not all autoimmune disorders results from the interaction and synergistic immunosuppressive effects of the given drug(s) and the underlying disease. In the MS and post-transplantation setting, on the other hand, PML seems to be entirely attributable to iatrogenic reasons. Second, it is not inconceivable that several reports only mentioned the drug(s) that were taken at the time of PML onset, without giving notice to previous use of immunosuppressive therapies or long-standing leukopenia. As a result, the drugs mentioned may just have given the final push to the diagnosis of PML rather than being fully responsible. In most cases of this study (277/326, 85 %), the risk of medication-associated PML seemed related to a maximum of three drugs. However, in this respect the heterogeneity of the data set needs to be appreciated and one should take into account several other factors like duration of treatment, concomitant medication use, and comorbidity.

In conclusion, drug-associated PML represents an emerging yet underrecognized clinical entity. We demonstrated that the various subgroups share several clinical and radiological characteristics despite the highly heterogeneous nature of the underlying diseases. In all subgroups, motor weakness and cognitive changes comprised the two most common clinical manifestations, while the frontal and parietal lobes invariably appeared to be the predilection sites of PML lesions. Nonetheless, it is important to be aware of subtle—and sometimes more obvious—differences in preferential presentations, e.g., discrepancies in the patterns of lesion dissemination and contrast enhancement. In the end, meticulous clinical and radiological vigilance in recognizing the phenotype at an early stage coupled with prompt withdrawal and clearance of the culprit, appropriate supportive therapies, and accurate monitoring and treatment of a consecutive IRIS remain crucial to obtain better outcomes in the battle against this frequently relentless disease.

Compliance with ethical standards

Ethical standards The manuscript does not contain clinical studies or patient data.

Conflicts of interest Roderick Maas reports no disclosures. Annet Marie Muller-Hansma reports no disclosures. Rianne Esselink reports no disclosures. Jean-Luc Murk received personal fees from Biogen. Clemens Warnke received compensation for consulting and/or research support from Novartis, Biogen, Bayer, and TEVA. Joep Killestein accepted speaker and consulting fees from Merck-Serono, Biogen Idec, TEVA, Genzyme, and Novartis. Mike Wattjes serves as a consultant for Roche, Novartis, and Biogen. MS Center Amsterdam of the VU University Medical Center received financial support for research activities from Bayer Schering Pharma, Biogen Idec, GlaxoSmithKline, Merck-Serono, Novartis, and TEVA.

Funding Not applicable.

Open Access This article is distributed under the terms of the Creative Commons Attribution 4.0 International License (<http://creativecommons.org/licenses/by/4.0/>), which permits unrestricted use, distribution, and reproduction in any medium, provided you give appropriate credit to the original author(s) and the source, provide a link to the Creative Commons license, and indicate if changes were made.

References

1. Tan CS, Koralnik IJ (2010) Progressive multifocal leukoencephalopathy and other disorders caused by JC virus: clinical features and pathogenesis. *Lancet Neurol* 9:425–437
2. Gheuens S, Wuthrich C, Koralnik IJ (2013) Progressive multifocal leukoencephalopathy: why gray and white matter. *Annu Rev Pathol* 8:189–215
3. Berger JR, Aksamit AJ, Clifford DB, Davis L, Koralnik IJ, Sejvar JJ, Bartt R, Major EO, Nath A (2013) PML diagnostic

- criteria: consensus statement from the AAN neuroinfectious disease section. *Neurology* 80:1430–1438
4. Zaheer F, Berger JR (2012) Treatment-related progressive multifocal leukoencephalopathy: current understanding and future steps. *Ther Adv Drug Saf* 3:227–239
 5. Molloy ES, Calabrese LH (2012) Progressive multifocal leukoencephalopathy associated with immunosuppressive therapy in rheumatic diseases: evolving role of biologic therapies. *Arthritis Rheum* 64:3043–3051
 6. Mateen FJ, Muralidharan R, Carone M, van de Beek D, Harrison DM, Aksamit AJ, Gould MS, Clifford DB, Nath A (2011) Progressive multifocal leukoencephalopathy in transplant recipients. *Ann Neurol* 70:305–322
 7. Schmedt N, Andersohn F, Garbe E (2012) Signals of progressive multifocal leukoencephalopathy for immunosuppressants: a disproportionality analysis of spontaneous reports within the US Adverse Event Reporting System (AERS). *Pharmacoepidemiol Drug Saf* 21:1216–1220
 8. Tan IL, McArthur JC, Clifford DB, Major EO, Nath A (2011) Immune reconstitution inflammatory syndrome in natalizumab-associated PML. *Neurology* 77:1061–1067
 9. Wijburg MT, van Oosten BW, Murk JL, Karimi O, Killestein J, Wattjes MP (2015) Heterogeneous imaging characteristics of JC virus granule cell neuronopathy (GCN): a case series and review of the literature. *J Neurol* 262:65–73
 10. Wijburg MT, Siepmann D, van Eijk JJ, Killestein J, Wattjes MP (2016) Concomitant granule cell neuronopathy in patients with natalizumab-associated PML. *J Neurol* 263:649–656
 11. Eichstaedt KE, Kovatch K, Maroof DA (2013) A less conservative method to adjust for familywise error rate in neuropsychological research: the Holm's sequential Bonferroni procedure. *NeuroRehabilitation* 32:693–696
 12. Riskind PN, Richardson EP (1995) Case records of the Massachusetts General Hospital. Weekly clinicopathological exercises. Case 20–1995. A 66-year-old man with a history of rheumatoid arthritis treated with adrenocorticosteroids, with the development of aphasia and right-sided weakness. *N Engl J Med* 332:1773–1780
 13. Ahmed F, Aziz T, Kaufman LD (1999) Progressive multifocal leukoencephalopathy in a patient with systemic lupus erythematosus. *J Rheumatol* 26:1609–1612
 14. Aksamit AJ Jr, de Groen PC (1995) Cyclosporine-related leukoencephalopathy and PML in a liver transplant recipient. *Transplantation* 60:874–876
 15. Aksamit AJ Jr (2012) Progressive multifocal leukoencephalopathy. *Continuum (Minneapolis)* 18:1374–1391
 16. Al-Tawfiq JA, Banda RW, Daabil RA, Dawamneh MF (2015) Progressive multifocal leukoencephalopathy (PML) in a patient with lymphoma treated with rituximab: a case report and literature review. *J Infect Public Health* 8:493–497
 17. Arbusow V, Strupp M, Pfister HW, Seelos KC, Bruckmann H, Brandt T (2000) Contrast enhancement in progressive multifocal leukoencephalopathy: a predictive factor for long-term survival? *J Neurol* 247:306–308
 18. Arnaud FX, Hissene A, Metivier D, Dutasta F, Berets O, N'guema B, A'teritehau C, Baccialone J, Potet J (2012) Gadolinium enhancement in brain magnetic resonance imaging in progressive multifocal leukoencephalopathy after natalizumab monotherapy: is it really atypical? *J Neuroradiol* 39:267–270
 19. Ayzenberg I, Lukas C, Trampe N, Gold R, Hellwig K (2012) Value of MRI as a surrogate marker for PML in natalizumab long-term therapy. *J Neurol* 259:1732–1733
 20. Baehring JM, Vives K, Bannykh S (2007) Progressive multifocal leukoencephalopathy in a patient with marginal zone B-cell lymphoma. *J Neurooncol* 85:289–290
 21. Bartsch T, Rempé T, Wrede A, Leyboldt F, Bruck W, Adams O, Rohr A, Jansen O, Wuthrich C, Deuschl G, Korálik IJ (2015) Progressive neurologic dysfunction in a psoriasis patient treated with dimethyl fumarate. *Ann Neurol* 78:501–514
 22. Belli LS, De CL, Romani F, Rondinara GF, Rimoldi P, Alberti A, Bettale G, Dughetti L, Ideo G, Sberna M (1993) Dysarthria and cerebellar ataxia: late occurrence of severe neurotoxicity in a liver transplant recipient. *Transpl Int* 6:176–178
 23. Beppu M, Kawamoto M, Nukuzuma S, Kohara N (2012) Mefloquine improved progressive multifocal leukoencephalopathy in a patient with systemic lupus erythematosus. *Intern Med* 51:1245–1247
 24. Berghoff M, Schanzler A, Hildebrandt GC, Dassinger B, Klappstein G, Kaps M, Gizewski ER, Acker T, Grams A (2013) Development of progressive multifocal leukoencephalopathy in a patient with non-Hodgkin lymphoma 13 years after treatment with cladribine. *Leuk Lymphoma* 54:1340–1342
 25. Berghoff M, Dassinger B, Iwanska-Zelder J, Giraldo M, Bilgin S, Kaps M, Gizewski ER (2014) A case of natalizumab-associated progressive multifocal leukoencephalopathy—role for advanced MRI? *Clin Neuroradiol* 24:173–176
 26. Berner B, Krieter DH, Rumpf KW, Grunewald RW, Beuche W, Weber T, Müller GA (1999) Progressive multifocal leukoencephalopathy in a renal transplant patient diagnosed by JCV-specific DNA amplification and an intrathecal humoral immune response to recombinant virus protein 1. *Nephrol Dial Transplant* 14:462–465
 27. Blair NF, Brew BJ, Halpern JP (2012) Natalizumab-associated PML identified in the presymptomatic phase using MRI surveillance. *Neurology* 78:507–508
 28. Boster AL, Nicholas JA, Topalli I, Kisanuki YY, Pei W, Morgan-Followell B, Kirsch CF, Racke MK, Pitt D (2013) Lessons learned from fatal progressive multifocal leukoencephalopathy in a patient with multiple sclerosis treated with natalizumab. *JAMA Neurol* 70:398–402
 29. Boulton-Jones JR, Fraser-Moodie C, Ryder SD (2001) Long term survival from progressive multifocal leukoencephalopathy after liver transplantation. *J Hepatol* 35:828–829
 30. Bronster DJ, Lidov MW, Wolfe D, Schwartz ME, Miller CM (1995) Progressive multifocal leukoencephalopathy after orthotopic liver transplantation. *Liver Transpl Surg* 1:371–372
 31. Bruggemann N, Gottschalk S, Kortke D, Marxsen JH, Moser A (2012) Excessively increased CSF tau in progressive multifocal leukoencephalopathy. *Clin Neurol Neurosurg* 114:762–764
 32. Buckanovich RJ, Liu G, Stricker C, Luger SM, Stadmauer EA, Schuster SJ, Duffy K, Tsai D, Pruitt A, Porter DL (2002) Nonmyeloablative allogeneic stem cell transplantation for refractory Hodgkin's lymphoma complicated by interleukin-2 responsive progressive multifocal leukoencephalopathy. *Ann Hematol* 81:410–413
 33. Buttman M, Stoll G (2013) Case reports of PML in patients treated for psoriasis. *N Engl J Med* 369:1081
 34. Calvi A, De RM, Pietroboni AM, Ghezzi L, Maltese V, Arighi A, Fumagalli GG, Jacini F, Donelli C, Comi G, Galimberti D, Scarpini E (2014) Partial recovery after severe immune reconstitution inflammatory syndrome in a multiple sclerosis patient with progressive multifocal leukoencephalopathy. *Immunotherapy* 6:23–28
 35. Carson KR, Newsome SD, Kim EJ, Wagner-Johnston ND, von Geldern G, Moskowitz CH, Moskowitz AJ, Rook AH, Jalan P, Loren AW, Landsburg D, Coyne T, Tsai D, Raisch DW, Norris LB, Bookstaver PB, Sartor O, Bennett CL (2014) Progressive multifocal leukoencephalopathy associated with brentuximab vedotin therapy: a report of 5 cases from the Southern Network on Adverse Reactions (SONAR) project. *Cancer* 120:2464–2471

36. Cei M, Mumoli N, Ferrito G, Scazzari F (2010) Progressive multifocal leukoencephalopathy. *South Med J* 103:1074–1075
37. Chakraborty S, Tarantolo SR, Treves J, Sambol D, Hauke RJ, Batra SK (2011) Progressive multifocal leukoencephalopathy in a HIV-negative patient with small lymphocytic leukemia following treatment with Rituximab. *Case Rep Oncol* 4:136–142
38. Chihara D, Takeoka T, Shirase T, Kishimoto W, Arimoto-Miyamoto K, Tsuji M, Ohno T (2010) Progressive multifocal leukoencephalopathy in myelodysplastic syndrome involving pure red cell aplasia. *Intern Med* 49:2347–2352
39. Choy DS, Weiss A, Lin PT (1992) Progressive multifocal leukoencephalopathy following treatment for Wegener's granulomatosis. *JAMA* 268:600–601
40. Cid J, Revilla M, Cervera A, Cervantes F, Munoz E, Ferrer I, Montserrat E (2000) Progressive multifocal leukoencephalopathy following oral fludarabine treatment of chronic lymphocytic leukemia. *Ann Hematol* 79:392–395
41. Clerico M, Schiavetti I, De Mercanti SF, Piazza F, Gned D, Brescia MV, Lanzillo R, Ghezzi A, Bianchi A, Salemi G, Realmuto S, Sola P, Vitetta F, Cavalla P, Paolicelli D, Trojano M, Sormani MP, Durelli L (2014) Treatment of relapsing-remitting multiple sclerosis after 24 doses of natalizumab: evidence from an Italian spontaneous, prospective, and observational study (the TY-STOP Study). *JAMA Neurol* 71:954–960
42. Clifford DB, Ances B, Costello C, Rosen-Schmidt S, Andersson M, Parks D, Perry A, Yerra R, Schmidt R, Alvarez E, Tyler KL (2011) Rituximab-associated progressive multifocal leukoencephalopathy in rheumatoid arthritis. *Arch Neurol* 68:1156–1164
43. Coppo P, Laporte JP, Aoudjhane M, Lebon P, Isnard F, Lesage S, Gorin NC, Najman A (1999) Progressive multifocal leukoencephalopathy with peripheral demyelinating neuropathy after autologous bone marrow transplantation for acute myeloblastic leukemia (FAB5). *Bone Marrow Transplant* 23:401–403
44. Crowder CD, Gyure KA, Drachenberg CB, Werner J, Morales RE, Hirsch HH, Ramos E (2005) Successful outcome of progressive multifocal leukoencephalopathy in a renal transplant patient. *Am J Transplant* 5:1151–1158
45. Cuevas LA, Fuchs HA (2004) Progressive multifocal leukoencephalopathy and immunosuppression. *Ann Rheum Dis* 63:112–113
46. D'Souza A, Wilson J, Mukherjee S, Jaiyesimi I (2010) Progressive multifocal leukoencephalopathy in chronic lymphocytic leukemia: a report of three cases and review of the literature. *Clin Lymphoma Myeloma Leuk* 10:E1–E9
47. Daibata M, Hatakeyama N, Kamioka M, Nemoto Y, Hiroi M, Miyoshi I, Taguchi H (2001) Detection of human herpesvirus 6 and JC virus in progressive multifocal leukoencephalopathy complicating follicular lymphoma. *Am J Hematol* 67:200–205
48. Damasceno A, von Glehn F, Martinez AR, Longhini AL, Deus-Silva L, Brandao CO, Santos LM, Damasceno BP (2011) Early onset of natalizumab-related progressive multifocal leukoencephalopathy. *Mult Scler* 17:1397–1398
49. Dammeier N, Schubert V, Hauser TK, Bornemann A, Bischof F (2015) Case report of a patient with progressive multifocal leukoencephalopathy under treatment with dimethyl fumarate. *BMC Neurol* 15:108
50. Dastmalchi M, Laki J, Lundberg IE, Iacobaeus E (2012) Progressive multifocal leukoencephalopathy in a patient with polymyositis: case report and literature review. *J Rheumatol* 39:1299–1303
51. Dawson DM (1982) Progressive multifocal leukoencephalopathy in myasthenia gravis. *Ann Neurol* 11:218–219
52. del Pilar Martin M, Cravens PD, Winger R, Kieseier BC, Cepok S, Eagar TN, Zamvil SS, Weber MS, Frohman EM, Kleinschmidt-DeMasters BK, Montine TJ, Hemmer B, Marra CM, Stuve O (2009) Depletion of B lymphocytes from cerebral perivascular spaces by rituximab. *Arch Neurol* 66:1016–1020
53. Desmond R, Lynch K, Gleeson M, Farrell M, Murphy P (2010) Progressive multifocal leukoencephalopathy and cerebral toxoplasmosis in a patient with CLL. *Am J Hematol* 85:607
54. Dima D, Tomuleasa C, Irimie A, Florian IS, Petrushev B, Berindan-Neagoe I, Cucuianu A (2014) Magnetic resonance imaging-based diagnosis of progressive multifocal leukoencephalopathy in a patient with non-Hodgkin lymphoma after therapy with cyclophosphamide, doxorubicin, vincristine, prednisone, and rituximab. *Cancer* 120:4005–4006
55. Dominguez-Mozo MI, Garcia-Montojo M, De Las Heras V, Garcia-Martinez A, Arias-Leal AM, Casanova I, Arroyo R, Alvarez-Lafuente R (2013) Anti-JCV antibodies detection and JCV DNA levels in PBMC, serum and urine in a cohort of Spanish Multiple Sclerosis patients treated with natalizumab. *J Neuroimmune Pharmacol* 8:1277–1286
56. Egan JD, Ring BL, Reding MJ, Wells IC, Shuman RM (1980) Reticulum cell sarcoma and progressive multifocal leukoencephalopathy following renal transplantation. *Transplantation* 29:84–86
57. Elster MJ (2013) Natalizumab (tysabri)-associated progressive multifocal leukoencephalopathy: insights from perfusion magnetic resonance imaging. *J Comput Assist Tomogr* 37:694–697
58. Embrey JR, Silva FG, Helderman JH, Peters PC, Sagalowsky AI (1988) Long-term survival and late development of bladder cancer in renal transplant patient with progressive multifocal leukoencephalopathy. *J Urol* 139:580–581
59. Epker JL, van Biezen P, van Daele PL, van Gelder T, Vossen A, van Saase JL (2009) Progressive multifocal leukoencephalopathy, a review and an extended report of five patients with different immune compromised states. *Eur J Intern Med* 20:261–267
60. Ermis U, Weis J, Schulz JB (2013) PML in a patient treated with fumaric acid. *N Engl J Med* 368:1657–1658
61. Felli V, Di SA, Anselmi M, Gennarelli A, Sucapane P, Splendiani A, Catalucci A, Marini C, Gallucci M (2014) Progressive multifocal leukoencephalopathy following treatment with rituximab in an HIV-negative patient with non-hodgkin lymphoma. A case report and literature review. *Neuroradiol J* 27:657–664
62. Fianchi L, Colosimo C, De LA, Pompucci A, Cattani P, Voso MT, LaRocca LM, Leone G, Pagano L (2010) Atypical presentation of progressive multifocal leukoencephalopathy in a multiple myeloma patient after auto-SCT successfully treated with combination therapy. *Bone Marrow Transplant* 45:1668–1670
63. Fine AJ, Sorbello A, Kortepeter C, Scarazzini L (2014) Progressive multifocal leukoencephalopathy after natalizumab discontinuation. *Ann Neurol* 75:108–115
64. Fleischmann RM (2009) Progressive multifocal leukoencephalopathy following rituximab treatment in a patient with rheumatoid arthritis. *Arthritis Rheum* 60:3225–3228
65. Flomenbaum MA, Jarcho JA, Schoen FJ (1991) Progressive multifocal leukoencephalopathy fifty-seven months after heart transplantation. *J Heart Lung Transplant* 10:888–893
66. Focosi D, Fazzi R, Montanaro D, Emdin M, Petrini M (2007) Progressive multifocal leukoencephalopathy in a haploidentical stem cell transplant recipient: a clinical, neuroradiological and virological response after treatment with risperidone. *Antiviral Res* 74:156–158
67. Fredericks CA, Kvam KA, Bear J, Crabtree GS, Josephson SA (2014) A case of progressive multifocal leukoencephalopathy in a lupus patient treated with belimumab. *Lupus* 23:711–713
68. Freim Wahl SG, Folvik MR, Torp SH (2007) Progressive multifocal leukoencephalopathy in a lymphoma patient with

- complete remission after treatment with cytostatics and rituximab: case report and review of the literature. *Clin Neuropathol* 26:68–73
69. Gajofatto A, Bianchi MR, Deotto L, Benedetti MD (2014) Are natalizumab and fingolimod analogous second-line options for the treatment of relapsing-remitting multiple sclerosis? A clinical practice observational study. *Eur Neurol* 72:173–180
 70. Gaman A, Bold A, Gaman G (2011) The unexpected evolution of a case of diffuse large B-cell non-Hodgkin lymphoma. *Rom J Morphol Embryol* 52:719–722
 71. Garcia JH, Pearson J, Bonnin J, Gupta KL (1985) Deteriorating neurologic function in a 28-year-old renal transplant recipient. *Ala J Med Sci* 22:208–214
 72. Garrote H, de la Fuente A, Ona R, Rodriguez I, Echevarria JE, Sepulveda JM, Garcia JF (2015) Long-term survival in a patient with progressive multifocal leukoencephalopathy after therapy with rituximab, fludarabine and cyclophosphamide for chronic lymphocytic leukemia. *Exp Hematol Oncol* 4:8
 73. Gedizlioglu M, Coban P, Ce P, Sivasli IE (2009) An unusual complication of immunosuppression in myasthenia gravis: progressive multifocal leukoencephalopathy. *Neuromuscul Disord* 19:155–157
 74. Gentile S, Sacerdote I, Roccatello D, Giordana MT (1996) Progressive multifocal leukoencephalopathy during cyclosporine treatment. A case report. *Ital J Neurol Sci* 17:363–366
 75. Giacomini PS, Rozenberg A, Metz I, Araujo D, Arbour N, Bar-Or A (2014) Maraviroc and JC virus-associated immune reconstitution inflammatory syndrome. *N Engl J Med* 370:486–488
 76. Goldberg SL, Pecora AL, Alter RS, Kroll MS, Rowley SD, Waintraub SE, Imrit K, Preti RA (2002) Unusual viral infections (progressive multifocal leukoencephalopathy and cytomegalovirus disease) after high-dose chemotherapy with autologous blood stem cell rescue and peritransplantation rituximab. *Blood* 99:1486–1488
 77. Gonzalez H, Bolgert F, Camporo P, Leblond V (1999) Progressive multifocal leukoencephalitis (PML) in three patients treated with standard-dose fludarabine (FAMP). *Hematol Cell Ther* 41:183–186
 78. Govindappa V, Hicks S, Wichter M, Jolly M (2007) Progressive multifocal leukoencephalopathy in systemic lupus erythematosus. *Arthritis Rheum* 57:352–354
 79. Graff-Radford J, Robinson MT, Warsame RM, Matteson EL, Eggers SD, Keegan BM (2012) Progressive multifocal leukoencephalopathy in a patient treated with etanercept. *Neurologist* 18:85–87
 80. Grinyo J, Charpentier B, Pestana JM, Vanrenterghem Y, Vincenti F, Reyes-Acevedo R, Apanovitch AM, Gujrathi S, Agarwal M, Thomas D, Larsen CP (2010) An integrated safety profile analysis of belatacept in kidney transplant recipients. *Transplantation* 90:1521–1527
 81. Haghikia A, Perrech M, Pula B, Ruhrmann S, Potthoff A, Brockmeyer NH, Goelz S, Wiendl H, Linda H, Ziemssen T, Baranzini SE, Kall TB, Bengel D, Olsson T, Gold R, Chan A (2011) Functional energetics of CD4+ T-cellular immunity in monoclonal antibody-associated progressive multifocal leukoencephalopathy in autoimmune disorders. *PLoS One* 6:e18506
 82. Hall WA, Martinez AJ, Dummer JS (1988) Progressive multifocal leukoencephalopathy after cardiac transplantation. *Neurology* 38:995–996
 83. Harris HE (2008) Progressive multifocal leukoencephalopathy in a patient with systemic lupus erythematosus treated with rituximab. *Rheumatology (Oxford)* 47:224–225
 84. Hasan MM, Taylor P (2005) Progressive multifocal leukoencephalopathy in a case of chronic lymphocytic leukaemia. *Br J Haematol* 130:808
 85. Havla J, Berthele A, Kumpfel T, Krumbholz M, Jochim A, Kronsbein H, Ryschkewitsch C, Jensen P, Lippmann K, Hemmer B, Major E, Hohlfeld R (2013) Co-occurrence of two cases of progressive multifocal leukoencephalopathy in a natalizumab “infusion group”. *Mult Scler* 19:1213–1215
 86. Heine A, Schmiedel A, Menschik T, Held SA, Erdmann C, Brossart P (2013) Regression of liver metastases after treatment with oxaliplatin/capecitabine and development of a progressive multifocal leukoencephalopathy in a patient with advanced thymoma. *J Clin Oncol* 31:e203–e205
 87. Hendel-Chavez H, de Goer de Herve MG, Giannesini C, Mazet AA, Papeix C, Louapre C, Chardain A, Boutarfa N, Theaudin M, Adams D, Gasnault J, Stankoff B, Taoufik Y (2013) Immunological hallmarks of JC virus replication in multiple sclerosis patients on long-term natalizumab therapy. *J Virol* 87:6055–6059
 88. Herold T, Seiler T, Egensperger R, Trumm C, Bergmann M, Franke D, Mumm FF, Schinwald N, Buske C, Dreyling M (2012) Progressive multifocal leukoencephalopathy after treatment with rituximab, fludarabine and cyclophosphamide in a patient with chronic lymphocytic leukemia. *Leuk Lymphoma* 53:169–172
 89. Ho K, Garancis JC, Paegle RD, Gerber MA, Borkowski WJ (1980) Progressive multifocal leukoencephalopathy and malignant lymphoma of the brain in a patient with immunosuppressive therapy. *Acta Neuropathol* 52:81–83
 90. Hoepner R, Faissner S, Klasing A, Schneider R, Metz I, Belenberger B, Lukas C, Altmeyer P, Gold R, Chan A (2015) Progressive multifocal leukoencephalopathy during fumarate monotherapy of psoriasis. *Neurol Neuroimmunol Neuroinflamm* 2:e85
 91. Holmen C, Piehl F, Hillert J, Fogdell-Hahn A, Lundkvist M, Karlberg E, Nilsson P, Dahle C, Feltelius N, Svenningsson A, Lycke J, Olsson T (2011) A Swedish national post-marketing surveillance study of natalizumab treatment in multiple sclerosis. *Mult Scler* 17:708–719
 92. Isidoro L, Pires P, Rito L, Cordeiro G (2014) Progressive multifocal leukoencephalopathy in a patient with chronic lymphocytic leukaemia treated with alemtuzumab. *BMJ Case Rep*. doi:10.1136/bcr-2013-201781
 93. Itoh K, Kano T, Nagashio C, Mimori A, Kinoshita M, Sumiya M (2006) Progressive multifocal leukoencephalopathy in patients with systemic lupus erythematosus. *Arthritis Rheum* 54:1020–1022
 94. Jones HR Jr, Hedley-Whyte ET, Freidberg SR, Kelleher JE Jr, Krolikowski J (1982) Primary cerebellopontine progressive multifocal leukoencephalopathy diagnosed premortem by cerebellar biopsy. *Ann Neurol* 11:199–202
 95. Kalisch A, Wilhelm M, Erbguth F, Birkmann J (2014) Progressive multifocal leukoencephalopathy in patients with a hematological malignancy: review of therapeutic options. *Chemotherapy* 60:47–53
 96. Kaufman GP, Aksamit AJ, Klein CJ, Yi ES, Delone DR, Litzow MR (2014) Progressive multifocal leukoencephalopathy: a rare infectious complication following allogeneic hematopoietic cell transplantation (HCT). *Eur J Haematol* 92:83–87
 97. Kharfan-Dabaja MA, Ayala E, Greene J, Rojiani A, Murtagh FR, Anasetti C (2007) Two cases of progressive multifocal leukoencephalopathy after allogeneic hematopoietic cell transplantation and a review of the literature. *Bone Marrow Transplant* 39:101–107
 98. Khoury S, Shapira S, Zilberman T, Mekori YA, Hershko AY (2013) Progressive multifocal leukoencephalopathy in an HIV-negative patient following treatment with rituximab. *Isr Med Assoc J* 15:321–322

99. Kiewe P, Seyfert S, Korper S, Rieger K, Thiel E, Knauf W (2003) Progressive multifocal leukoencephalopathy with detection of JC virus in a patient with chronic lymphocytic leukemia parallel to onset of fludarabine therapy. *Leuk Lymphoma* 44:1815–1818
100. Kinoshita M, Iwana K, Shinoura H, Aotsuka S, Sumiya M (1998) Progressive multifocal leukoencephalopathy resembling central nervous system systemic lupus erythematosus. *Clin Exp Rheumatol* 16:313–315
101. Kleinschmidt-DeMasters BK, Tyler KL (2005) Progressive multifocal leukoencephalopathy complicating treatment with natalizumab and interferon beta-1a for multiple sclerosis. *N Engl J Med* 353:369–374
102. Kleinschmidt-DeMasters BK, Miravalle A, Schowinsky J, Corboy J, Vollmer T (2012) Update on PML and PML-IRIS occurring in multiple sclerosis patients treated with natalizumab. *J Neuropathol Exp Neurol* 71:604–617
103. Kleiter I, Schroder M, Lurding R, Schuierer G, Clifford DB, Bogdahn U, Steinbrecher A, Poschl P (2010) Early changes on electroencephalography in natalizumab-associated progressive multifocal leukoencephalopathy. *Mult Scler* 16:749–753
104. Klintmalm GB, Feng S, Lake JR, Vargas HE, Wekerle T, Agnes S, Brown KA, Nashan B, Rostaing L, Meadows-Shropshire S, Agarwal M, Harler MB, Garcia-Valdecasas JC (2014) Belatacept-based immunosuppression in de novo liver transplant recipients: 1-year experience from a phase II randomized study. *Am J Transplant* 14:1817–1827
105. Ko MY, Stefoski D, Balabanov R (2011) Indolent course of progressive multifocal leukoencephalopathy during natalizumab treatment in MS. *Neurology* 77:1020
106. Kobayashi K, Okamoto Y, Inoue H, Usui T, Ihara M, Kawamata J, Miki Y, Mimori T, Tomimoto H, Takahashi R (2009) Leukoencephalopathy with cognitive impairment following tocilizumab for the treatment of rheumatoid arthritis (RA). *Intern Med* 48:1307–1309
107. Kobayashi Z, Akaza M, Numasawa Y, Ishihara S, Tomimitsu H, Nakamichi K, Saijo M, Morio T, Shimizu N, Sanjo N, Shintani S, Mizusawa H (2013) Failure of mefloquine therapy in progressive multifocal leukoencephalopathy: report of two Japanese patients without human immunodeficiency virus infection. *J Neurol Sci* 324:190–194
108. Koralnik IJ, Schellingerhout D, Frosch MP (2004) Case records of the Massachusetts General Hospital. Weekly clinicopathological exercises. Case 14-2004. A 66-year-old man with progressive neurologic deficits. *N Engl J Med* 350:1882–1893
109. Kothary N, Diak IL, Brinker A, Bezabeh S, Avigan M, Dal PG (2011) Progressive multifocal leukoencephalopathy associated with efalizumab use in psoriasis patients. *J Am Acad Dermatol* 65:546–551
110. Kranick SM, Mowry EM, Rosenfeld MR (2007) Progressive multifocal leukoencephalopathy after rituximab in a case of non-Hodgkin lymphoma. *Neurology* 69:704–706
111. Kuhle J, Gosert R, Buhler R, Derfuss T, Sutter R, Yaldizli O, Radue EW, Ryschewitsch C, Major EO, Kappos L, Frank S, Hirsch HH (2011) Management and outcome of CSF-JC virus PCR-negative PML in a natalizumab-treated patient with MS. *Neurology* 77:2010–2016
112. Kumar D, Bouldin TW, Berger RG (2010) A case of progressive multifocal leukoencephalopathy in a patient treated with infliximab. *Arthritis Rheum* 62:3191–3195
113. Lach B, Connolly B, Wuthrich C, Koralnik IJ (2014) Inflammatory infratentorial progressive multifocal leukoencephalopathy in a patient with rheumatoid arthritis. *Neuropathology* 34:39–44
114. Lalive PH, Bridel C, Ferfaglia RI, Kaiser L, Du PR, Barkhof F, Haller S (2015) Minimal supportive treatment in natalizumab-related PML in a MS patient. *J Neurol Neurosurg Psychiatry* 86:354–355
115. Langer-Gould A, Atlas SW, Green AJ, Bollen AW, Pelletier D (2005) Progressive multifocal leukoencephalopathy in a patient treated with natalizumab. *N Engl J Med* 353:375–381
116. Leblanc-Trudeau C, Masetto A, Bocti C (2015) Progressive multifocal leukoencephalopathy associated with belimumab in a patient with systemic lupus erythematosus. *J Rheumatol* 42:551–552
117. Lee DH, Waschbisch A, Lammer AB, Doerfler A, Schwab S, Linker RA (2013) Immunological and clinical consequences of splenectomy in a multiple sclerosis patient treated with natalizumab. *J Neuroinflammation* 10:123
118. Lefevre G, Queyrel V, Maurice CA, Laurent C, Launay D, Lacour A, Charlanne H, Morell-Dubois S, Lambert M, Maillard H, Vermersch P, Hachulla E, Hatron PY (2009) Effective immune restoration after immunosuppressant discontinuation in a lupus patient presenting progressive multifocal leukoencephalopathy. *J Neurol Sci* 287:246–249
119. Lejniece S, Murovska M, Chapenko S, Breiksa B, Jaunmuktane Z, Feldmane L, Ziedina I, Gomez-Roman J, Garcia-Cabeza M, Lejniece A (2011) Progressive multifocal leukoencephalopathy following fludarabine treatment in a chronic lymphocytic leukemia patient. *Exp Oncol* 33:239–241
120. Lewis AR, Kline LB, Pinkard NB (1993) Visual loss due to progressive multifocal leukoencephalopathy in a heart transplant patient. *J Clin Neuroophthalmol* 13:237–241
121. Lima MA, Hanto DW, Curry MP, Wong MT, Dang X, Koralnik IJ (2005) Atypical radiological presentation of progressive multifocal leukoencephalopathy following liver transplantation. *J Neurovirol* 11:46–50
122. Linda H, von Heijne A, Major EO, Ryschewitsch C, Berg J, Olsson T, Martin C (2009) Progressive multifocal leukoencephalopathy after natalizumab monotherapy. *N Engl J Med* 361:1081–1087
123. Linda H, von Heijne A (2013) Presymptomatic diagnosis with MRI and adequate treatment ameliorate the outcome after natalizumab-associated progressive multifocal leukoencephalopathy. *Front Neurol* 4:11
124. Lobo LJ, Reynolds JM, Snyder LD (2013) Rituximab-associated progressive multifocal leukoencephalopathy after lung transplantation. *J Heart Lung Transplant* 32:752–753
125. Loyaga-Rendon RY, Taylor DO, Koval CE (2013) Progressive multifocal leukoencephalopathy in a heart transplant recipient following rituximab therapy for antibody-mediated rejection. *Am J Transplant* 13:1075–1079
126. Maillart E, Louapre C, Lubetzki C, Papeix C (2014) Fingolimod to treat severe multiple sclerosis after natalizumab-associated progressive multifocal leukoencephalopathy: a valid option? *Mult Scler* 20:505–509
127. Malas D, Weiss S (1977) Progressive multifocal leukoencephalopathy and cryptococcal meningitis with systemic lupus erythematosus and thymoma. *Ann Neurol* 1:188–191
128. Manfro RC, Vedolin L, Cantarelli M, Oppitz P, Antunes AC, Rieder CR (2009) Progressive multifocal leukoencephalopathy in a kidney transplant recipient after conversion to mycophenolic acid therapy. *Transpl Infect Dis* 11:189–190
129. Manz HJ, Dinsdale HB, Morrin PA (1971) Progressive multifocal leukoencephalopathy after renal transplantation. Demonstration of Papova-like virions. *Ann Intern Med* 75:77–81
130. Marie I, Guegan-Massardier E, Levesque H (2011) Progressive multifocal leukoencephalopathy in refractory polymyositis treated with rituximab. *Eur J Intern Med* 22:e13–e14
131. Marriott PJ, O'Brien MD, Mackenzie IC, Janota I (1975) Progressive multifocal leukoencephalopathy: remission with cytarabine. *J Neurol Neurosurg Psychiatry* 38:205–209

132. Martin SI, Marty FM, Fiumara K, Treon SP, Gribben JG, Baden LR (2006) Infectious complications associated with alemtuzumab use for lymphoproliferative disorders. *Clin Infect Dis* 43:16–24
133. Marzocchetti A, Wuthrich C, Tan CS, Tompkins T, Bernal-Cano F, Bhargava P, Ropper AH, Koralknik IJ (2008) Rearrangement of the JC virus regulatory region sequence in the bone marrow of a patient with rheumatoid arthritis and progressive multifocal leukoencephalopathy. *J Neurovirol* 14:455–458
134. Matijaca M, Vlastic-Matas J, Jankovic S, Pintaric I, Marovic A (2007) Neurotoxicity that may mimic progressive multifocal leukoencephalopathy in patient with transplanted kidney. *Coll Antropol* 31:349–353
135. Matteucci P, Magni M, Di NM, Carlo-Stella C, Uberti C, Gianni AM (2002) Leukoencephalopathy and papovavirus infection after treatment with chemotherapy and anti-CD20 monoclonal antibody. *Blood* 100:1104–1105
136. Mazda ME, Brosch JR, Wiens AL, Bonnin JM, Kamer AP, Mattson DH, Snook RJ (2013) A case of natalizumab-associated progressive multifocal leukoencephalopathy with repeated negative CSF JCV testing. *Int J Neurosci* 123:353–357
137. Mc Govern EM, Hennessy MJ (2013) Asymptomatic progressive multifocal leukoencephalopathy associated with natalizumab. *J Neurol* 260:665–667
138. McCormick WF, Schochet SS Jr, Sarles HE, Calverley JR (1976) Progressive multifocal leukoencephalopathy in renal transplant recipients. *Arch Intern Med* 136:829–834
139. McNally PG, Taylor JM, Wood JK (1988) Progressive multifocal leukoencephalopathy associated with chronic lymphocytic leukaemia. *Clin Lab Haematol* 10:229–233
140. Mesquita R, Parravicini C, Bjorkholm M, Ekman M, Biberfeld P (1992) Macrophage association of polyomavirus in progressive multifocal leukoencephalopathy: an immunohistochemical and ultrastructural study. Case report. *APMIS* 100:993–1000
141. Metivier D, Arnaud FX, Dutasta F, Nguema B, Teriitehau C, Berets O, Baccialone J, Potet J (2013) Immune reconstitution inflammatory syndrome in a patient treated with natalizumab presenting progressive multifocal leukoencephalopathy. *Diagn Interv Imaging* 94:101–103
142. Montoto S, Moreno C, Domingo-Domenech E, Estany C, Oriol A, Altes A, Besalduch J, Pedro C, Gardella S, Escoda L, Asensio A, Vivancos P, Galan P, de Sevilla AF, Ribera JM, Briones J, Colomer D, Campo E, Montserrat E, Lopez-Guillermo A (2008) High clinical and molecular response rates with fludarabine, cyclophosphamide and mitoxantrone in previously untreated patients with advanced stage follicular lymphoma. *Haematologica* 93:207–214
143. Moreno C, Montillo M, Panayiotidis P, Dimou M, Bloor A, Dupuis J, Schuh A, Norin S, Geisler C, Hillmen P, Doubek M, Trneny M, Obrtlíkova P, Laurenti L, Stilgenbauer S, Smolej L, Ghia P, Cymbalista F, Jaeger U, Stamatopoulos K, Stavroyianni N, Carrington P, Zouabi H, Leblond V, Gomez-Garcia JC, Rubio M, Marasca R, Musuraca G, Rigacci L, Farina L, Paolini R, Pospisilova S, Kimby E, Bradley C, Montserrat E (2015) Ofatumumab in poor-prognosis chronic lymphocytic leukemia: a phase IV, non-interventional, observational study from the European Research Initiative on Chronic Lymphocytic Leukemia. *Haematologica* 100:511–516
144. Morgenstern LB, Pardo CA (1995) Progressive multifocal leukoencephalopathy complicating treatment for Wegener's granulomatosis. *J Rheumatol* 22:1593–1595
145. Nagayama S, Gondo Y, Araya S, Minato N, Fujita-Nakata M, Kaito M, Nakanishi M, Tanaka K, Yamaya H, Yokoyama H, Nakamichi K, Saijo M, Okamoto K, Toyoshima Y, Kakita A, Matsui M (2013) Progressive multifocal leukoencephalopathy developed 26 years after renal transplantation. *Clin Neurol Neurosurg* 115:1482–1484
146. Newton P, Aldridge RD, Lessells AM, Best PV (1986) Progressive multifocal leukoencephalopathy complicating systemic lupus erythematosus. *Arthritis Rheum* 29:337–343
147. Ng C, Slavin MA, Seymour JF (2003) Progressive multifocal leukoencephalopathy complicating Waldenström's macroglobulinaemia. *Leuk Lymphoma* 44:1819–1821
148. Nieuwkamp DJ, Murk JL, van Oosten BW, Cremers CH, Killenstein J, Viveen MC, Van HW, Frijlink DW, Wattjes MP (2015) PML in a patient without severe lymphocytopenia receiving dimethyl fumarate. *N Engl J Med* 372:1474–1476
149. Nived O, Bengtsson AA, Jonsen A, Sturfelt G (2008) Progressive multifocal leukoencephalopathy—the importance of early diagnosis illustrated in four cases. *Lupus* 17:1036–1041
150. O'Shaughnessy D, Goldman JM, Roddie M, Schofield JB (1994) Dizziness and confusion after bone marrow transplantation. *BMJ* 309:262–265
151. Ohta K, Obara K, Sakauchi M, Obara K, Takane H, Yogo Y (2001) Lesion extension detected by diffusion-weighted magnetic resonance imaging in progressive multifocal leukoencephalopathy. *J Neurol* 248:809–811
152. Osorio S, de la Camara R, Golbano N, Marti E, Fedele CG, Nieto S, Manzanares R, Fernandez-Ranada JM (2002) Progressive multifocal leukoencephalopathy after stem cell transplantation, unsuccessfully treated with cidofovir. *Bone Marrow Transplant* 30:963–966
153. Outteryck O, Ongagna JC, Duhamel A, Zephir H, Collongues N, Lacour A, Fleury MC, Berteloot AS, Blanc F, Giroux M, Vermersch P, de Seze J (2012) Anti-JCV antibody prevalence in a French cohort of MS patients under natalizumab therapy. *J Neurol* 259:2293–2298
154. Outteryck O, Ongagna JC, Brochet B, Rumbach L, Lebrun-Frenay C, Debouverie M, Zephir H, Ouallet JC, Berger E, Cohen M, Pittion S, Laplaud D, Wiertlewski S, Cabre P, Pelletier J, Rico A, Defer G, Derache N, Camu W, Thouvenot E, Moreau T, Fromont A, Tourbah A, Labauge P, Castelnovo G, Clavelou P, Casez O, Hautecoeur P, Papeix C, Lubetzki C, Fontaine B, Couturier N, Bohossian N, Clanet M, Vermersch P, de Seze J, Brassat D (2014) A prospective observational post-marketing study of natalizumab-treated multiple sclerosis patients: clinical, radiological and biological features and adverse events. The BIONAT cohort. *Eur J Neurol* 21:40–48
155. Ouwens JP, Haaxma-Reiche H, Verschuuren EA, Timens W, Steenhuis LH, de Boer WJ, van der Bij W (2000) Visual symptoms after lung transplantation: a case of progressive multifocal leukoencephalopathy. *Transpl Infect Dis* 2:29–32
156. Owczarczyk K, Hilker R, Brunn A, Hallek M, Rubbert A (2007) Progressive multifocal leukoencephalopathy in a patient with sarcoidosis—successful treatment with cidofovir and mirtazapine. *Rheumatology (Oxford)* 46:888–890
157. Owen RG, Patmore RD, Smith GM, Barnard DL (1995) Cytomegalovirus-induced T-cell proliferation and the development of progressive multifocal leukoencephalopathy following bone marrow transplantation. *Br J Haematol* 89:196–198
158. Pagnoux C, Hayem G, Roux F, Roudi SA, Palazzo E, Henin D, Meyer O (2003) JC virus leukoencephalopathy complicating Wegener's granulomatosis. *Joint Bone Spine* 70:376–379
159. Palmieri A, Valentini L, Bazzano S, Baldi A, Orlando F, Tenaglia S, D'Anna S (2011) Progressive multifocal leukoencephalopathy following chemotherapy for lung cancer. *Neurol Sci* 32:683–685
160. Pavlovic AM, Bonaci-Nikolic B, Kozic D, Ostojic J, Abinun M, Svabic-Medjedovic T, Nikolic M, Sternc N (2012) Progressive multifocal leukoencephalopathy associated with mycophenolate

- mofetil treatment in a woman with lupus and CD4+ T-lymphocyte deficiency. *Lupus* 21:100–102
161. Pelosini M, Focosi D, Rita F, Galimberti S, Caracciolo F, Benedetti E, Papineschi F, Petrini M (2008) Progressive multifocal leukoencephalopathy: report of three cases in HIV-negative hematological patients and review of literature. *Ann Hematol* 87:405–412
 162. Phan-Ba R, Lommers E, Tshibanda L, Calay P, Dubois B, Moonen G, Clifford D, Belachew S (2012) MRI preclinical detection and asymptomatic course of a progressive multifocal leukoencephalopathy (PML) under natalizumab therapy. *J Neurol Neurosurg Psychiatry* 83:224–226
 163. Phillips T, Jacobs R, Ellis EN (2004) Polyoma nephropathy and progressive multifocal leukoencephalopathy in a renal transplant recipient. *J Child Neurol* 19:301–304
 164. Piehl F, Holmen C, Hillert J, Olsson T (2011) Swedish natalizumab (Tysabri) multiple sclerosis surveillance study. *Neurol Sci* 31(Suppl 3):289–293
 165. Piola M, Di PF, Mascoli N, Binda S, Arnaboldi M, Rezzonico M (2014) Atypical MRI features at early onset natalizumab-associated progressive multifocal leukoencephalopathy: a case report. *J Neurol Sci* 340:213–214
 166. Przepiorka D, Jaeckle KA, Birdwell RR, Fuller GN, Kumar AJ, Huh YO, McCutcheon I (1997) Successful treatment of progressive multifocal leukoencephalopathy with low-dose interleukin-2. *Bone Marrow Transplant* 20:983–987
 167. Pugnet G, Pagnoux C, Bezanahary H, Ly KH, Vidal E, Guillevin L (2013) Progressive multifocal encephalopathy after cyclophosphamide in granulomatosis with polyangiitis (Wegener) patients: case report and review of literature. *Clin Exp Rheumatol* 31:S62–S64
 168. Rahmlow M, Shuster EA, Dominik J, Deen HG Jr, Dickson DW, Aksamit AJ Jr, Robles HA, Freeman WD (2008) Leflunomide-associated progressive multifocal leukoencephalopathy. *Arch Neurol* 65:1538–1539
 169. Rankin E, Scaravilli F (1995) Progressive multifocal leukoencephalopathy in a patient with rheumatoid arthritis and polymyositis. *J Rheumatol* 22:777–779
 170. Ray M, Curtis JR, Baddley JW (2014) A case report of progressive multifocal leukoencephalopathy (PML) associated with adalimumab. *Ann Rheum Dis* 73:1429–1430
 171. Re D, Bamborschke S, Feiden W, Schroder R, Lehrke R, Diehl V, Tesch H (1999) Progressive multifocal leukoencephalopathy after autologous bone marrow transplantation and alpha-interferon immunotherapy. *Bone Marrow Transplant* 23:295–298
 172. Reddy N, Abel TW, Jagasia M, Morgan D, Weaver K, Greer J (2009) Progressive multifocal leukoencephalopathy in a patient with follicular lymphoma treated with multiple courses of rituximab. *Leuk Lymphoma* 50:460–462
 173. Rey J, Belmecheri N, Bouayed N, Ivanov V, Coso D, Gastaut JA, Bouabdallah R (2007) JC papovavirus leukoencephalopathy after first line treatment with CHOP and rituximab. *Haematologica* 92:e101
 174. Reznik M, Halleux J, Urbain E, Mouchette R, Castermans P, Beaujean M (1981) Two cases of progressive multifocal leukoencephalopathy after renal transplantation. *Acta Neuropathol Suppl* 7:189–191
 175. Ripellino P, Comi C, Mula M, Varrasi C, Conconi A, Stecco A, Brustia D, Nasuelli N, Savio K, De PL, Cantello R, Gaidano G, Monaco F (2011) Progressive multifocal leukoencephalopathy after autologous bone marrow transplantation: a treatment option. *BMJ Case Rep*. doi:10.1136/bcr.11.2010.3549
 176. Rodriguez L, Ribera JM, Batlle M, Xicoy B, Mate JL, Milla F, Feliu E (2002) Progressive multifocal leukoencephalopathy shortly after the diagnosis of follicular lymphoma in a patient treated with fludarabine. *Haematologica* 87:ECR26
 177. Rosenkranz T, Novas M, Terborg C (2015) PML in a patient with lymphocytopenia treated with dimethyl fumarate. *N Engl J Med* 372:1476–1478
 178. Saad ED, Thomas DA, O'Brien S, Fuller GN, Medeiros LJ, Forman A, Albitar M, Schomer D, Kantarjian HM, Keating MJ (2000) Progressive multifocal leukoencephalopathy with concurrent Richter's syndrome. *Leuk Lymphoma* 38:183–190
 179. Salmaggi A, Maccagnano E, Castagna A, Zeni S, Fantini F, Cinque P, Savoirdo M (2001) Reversal of CSF positivity for JC virus genome by cidofovir in a patient with systemic lupus erythematosus and progressive multifocal leukoencephalopathy. *Neurol Sci* 22:17–20
 180. Sanders JS, Riezebos-Brilman A, Homan van der Heide JJ (2012) Progressive multifocal leuko-encephalopathy after ABO-incompatible kidney transplantation. *Transpl Int* 25:e104–e105
 181. Sano Y, Nakano Y, Omoto M, Takao M, Ikeda E, Oga A, Nakamichi K, Saijo M, Maoka T, Sano H, Kawai M, Kanda T (2015) Rituximab-associated progressive multifocal leukoencephalopathy derived from non-Hodgkin lymphoma: neuropathological findings and results of mefloquine treatment. *Intern Med* 54:965–970
 182. Saumoy M, Castells G, Escoda L, Mares R, Richart C, Ugarriza A (2002) Progressive multifocal leukoencephalopathy in chronic lymphocytic leukemia after treatment with fludarabine. *Leuk Lymphoma* 43:433–436
 183. Saxton CR, Gailunas P Jr, Helderma JH, Farkas RA, McCoy R, Diehl J, Sagalowsky A, Murphy FK, Ross ED, Silva FR (1984) Progressive multifocal leukoencephalopathy in a renal transplant recipient. Increased diagnostic sensitivity of computed tomographic scanning by double-dose contrast with delayed films. *Am J Med* 77:333–337
 184. Schroder A, Lee DH, Hellwig K, Lukas C, Linker RA, Gold R (2010) Successful management of natalizumab-associated progressive multifocal leukoencephalopathy and immune reconstitution syndrome in a patient with multiple sclerosis. *Arch Neurol* 67:1391–1394
 185. Schwab N, Hohn KG, Schneider-Hohendorf T, Metz I, Stenner MP, Jilek S, Du Pasquier RA, Gold R, Meuth SG, Ransohoff RM, Bruck W, Wiendl H (2012) Immunological and clinical consequences of treating a patient with natalizumab. *Mult Scler* 18:335–344
 186. Schwab N, Schneider-Hohendorf T, Posevitz V, Breuer J, Gobel K, Windhagen S, Brochet B, Vermersch P, Lebrun-Frenay C, Posevitz-Fejfar A, Capra R, Imberti L, Straeten V, Haas J, Wildemann B, Havla J, Kumpfel T, Mehl I, Niessen K, Goelz S, Kleinschnitz C, Warnke C, Buck D, Gold R, Kieseier BC, Meuth SG, Foley J, Chan A, Brassat D, Wiendl H (2013) L-selectin is a possible biomarker for individual PML risk in natalizumab-treated MS patients. *Neurology* 81:865–871
 187. Seong D, Bruner JM, Lee KH, Mirza N, Kwon BD, Lee JH, Lee YY, Ro J, Talpaz M, Champlin R, Deisseroth AB (1996) Progressive multifocal leukoencephalopathy after autologous bone marrow transplantation in a patient with chronic myelogenous leukemia. *Clin Infect Dis* 23:402–403
 188. Shin JW, Jung KH, Lee ST, Moon J, Lim JA, Byun JI, Park KI, Lee SK, Chu K (2014) Mefloquine improved progressive multifocal leukoencephalopathy in a patient with immunoglobulin A nephropathy. *J Clin Neurosci* 21:1661–1664
 189. Shitrit D, Nirit L, Shiran SI, Izbicki G, Sofer D, Eldad M, Kramer MR (2003) Progressive multifocal leukoencephalopathy in a lung transplant recipient. *J Heart Lung Transplant* 22:946–950
 190. Shprecher D, Frech T, Chin S, Eskandari R, Steffens J (2008) Progressive multifocal leukoencephalopathy associated with lupus and methotrexate overdose. *Lupus* 17:1029–1032
 191. Sikkema T, Schuiling WJ, Hoogendoorn M (2013) Progressive multifocal leukoencephalopathy during treatment with rituximab

- and CHOP chemotherapy in a patient with a diffuse large B-cell lymphoma. *BMJ Case Rep*. doi:10.1136/bcr-2012-008142
192. Smolle E, Trojan A, Schuster SJ, Haybaeck J (2014) Progressive multifocal leukoencephalopathy—a case report and review of the literature. *In Vivo* 28:941–948
 193. Sottini A, Capra R, Zanotti C, Chiarini M, Serana F, Ricotta D, Caimi L, Imberti L (2012) Pre-existing T- and B-cell defects in one progressive multifocal leukoencephalopathy patient. *PLoS One* 7:e34493
 194. Sponzilli EE, Smith JK, Malamud N, McCulloch JR (1975) Progressive multifocal leukoencephalopathy: a complication of immunosuppressive treatment. *Neurology* 25:664–668
 195. Stahl NI (2008) Progressive multifocal leukoencephalopathy in a minimally immunosuppressed patient with systemic lupus erythematosus treated with dapsone. *J Rheumatol* 35:725–727
 196. Steurer M, Clausen J, Gotwald T, Gunsilius E, Stockhammer G, Gastl G, Nachbaur D (2003) Progressive multifocal leukoencephalopathy after allogeneic stem cell transplantation and posttransplantation rituximab. *Transplantation* 76:435–436
 197. Stoppe M, Thoma E, Liebert UG, Major EO, Hoffmann KT, Classen J, Then BF (2014) Cerebellar manifestation of PML under fumarate and after efalizumab treatment of psoriasis. *J Neurol* 261:1021–1024
 198. Taieb G, Renard D, Thouvenot E, Servillo G, Castelnovo G (2014) Transient punctuate enhancing lesions preceding natalizumab-associated progressive multifocal leukoencephalopathy. *J Neurol Sci* 346:364–365
 199. Thaker AA, Schmitt SE, Pollard JR, Dubroff JG (2014) Natalizumab-induced progressive multifocal leukoencephalopathy. *Clin Nucl Med* 39:e365–e366
 200. Tomura N, Watanabe M, Kato T, Nishino K, Kowada M (1994) Case report: progressive multifocal leukoencephalopathy with prominent medullary veins on angiogram. *Clin Radiol* 49:66–68
 201. Tortorella C, Drenzo V, D’Onghia M, Trojano M (2013) Brainstem PML lesion mimicking MS plaque in a natalizumab-treated MS patient. *Neurology* 81:1470–1471
 202. Travararou M, Marousi S, Papageorgiou E, Karageorgiou CE (2013) JCV-negative natalizumab-associated progressive multifocal leukoencephalopathy: a clinico-radiological diagnosis. *Clin Neurol Neurosurg* 115:827–829
 203. Tubridy N, Wells C, Lewis D, Schon F (2000) Unsuccessful treatment with cidofovir and cytarabine in progressive multifocal leukoencephalopathy associated with dermatomyositis. *J R Soc Med* 93:374–375
 204. Tuccori M, Focosi D, Maggi F, Cosottini M, Meini B, Lena F, Blandizzi C, Del TM, Pettrini M (2010) Progressive multifocal leukoencephalopathy: a report of three cases in HIV-negative patients with non-Hodgkin’s lymphomas treated with rituximab. *Ann Hematol* 89:519–522
 205. Uppenkamp M, Engert A, Diehl V, Bunjes D, Huhn D, Brittinger G (2002) Monoclonal antibody therapy with CAMPATH-1H in patients with relapsed high- and low-grade non-Hodgkin’s lymphomas: a multicenter phase I/II study. *Ann Hematol* 81:26–32
 206. van Oosten BW, Killestein J, Barkhof F, Polman CH, Wattjes MP (2013) PML in a patient treated with dimethyl fumarate from a compounding pharmacy. *N Engl J Med* 368:1658–1659
 207. Van AG, Van RM, Sciort R, Dubois B, Vermeire S, Noman M, Verbeeck J, Geboes K, Robberecht W, Rutgeerts P (2005) Progressive multifocal leukoencephalopathy after natalizumab therapy for Crohn’s disease. *N Engl J Med* 353:362–368
 208. van Pesch V, Bartholome E, Bissay V, Bouquiaux O, Bureau M, Caekebeke J, Debruyne J, Declercq I, Decoo D, Denayer P, De Smet E, D’hooghe M, Dubois B, Dupuis M, Sankari SE, Geens K, Guillaume D, van Landegem W, Lysandropoulos A, de Noordhout AM, Medaer R, Melin A, Peeters K, Ba RP, Retif C, Seelldrayers P, Symons A, Urbain E, Vanderdonck P, Van Ingelghem E, Vanopdenbosch L, Vanroose E, Van Wijmeersch B, Willekens B, Willems C, Sindic C (2014) Safety and efficacy of natalizumab in Belgian multiple sclerosis patients: subgroup analysis of the natalizumab observational program. *Acta Neurol Belg* 114:167–178
 209. Vennegoor A, Wattjes MP, van Munster ET, Kriekaart RL, van Oosten BW, Barkhof F, Killestein J, Polman CH (2011) Indolent course of progressive multifocal leukoencephalopathy during natalizumab treatment in MS. *Neurology* 76:574–576
 210. Verhelst X, Vanhooren G, Vanopdenbosch L, Casselman J, Laleman W, Pirenne J, Nevens F, Orlent H (2011) Progressive multifocal leukoencephalopathy in liver transplant recipients: a case report and review of the literature. *Transpl Int* 24:e30–e34
 211. Vidarsson B, Mosher DF, Salamat MS, Isaksson HJ, Onundarson PT (2002) Progressive multifocal leukoencephalopathy after fludarabine therapy for low-grade lymphoproliferative disease. *Am J Hematol* 70:51–54
 212. Volker HU, Kraft K, Arnold E, Steinhoff S, Kolios G, Sommer S (2007) Progressive multifocal leukoencephalopathy developing in advanced pulmonary sarcoidosis. *Clin Neurol Neurosurg* 109:624–630
 213. Vollmer-Haase J, Young P, Ringelstein EB (1997) Efficacy of camptothecin in progressive multifocal leukoencephalopathy. *Lancet* 349:1366
 214. von Geldern G, Pardo CA, Calabresi PA, Newsome SD (2012) PML-IRIS in a patient treated with brentuximab. *Neurology* 79:2075–2077
 215. Vulliemoz S, Lurati-Ruiz F, Borruat FX, Delavelle J, Korallnik IJ, Kuntzer T, Bogousslavsky J, Picard F, Landis T, Du Pasquier RA (2006) Favourable outcome of progressive multifocal leukoencephalopathy in two patients with dermatomyositis. *J Neurol Neurosurg Psychiatry* 77:1079–1082
 216. Waggoner J, Martinu T, Palmer SM (2009) Progressive multifocal leukoencephalopathy following heightened immunosuppression after lung transplant. *J Heart Lung Transplant* 28:395–398
 217. Wagner-Johnston ND, Bartlett NL, Cashen A, Berger JR (2012) Progressive multifocal leukoencephalopathy in a patient with Hodgkin lymphoma treated with brentuximab vedotin. *Leuk Lymphoma* 53:2283–2286
 218. Warnatz K, Peter HH, Schumacher M, Wiese L, Prasse A, Petschner F, Vaith P, Volk B, Weiner SM (2003) Infectious CNS disease as a differential diagnosis in systemic rheumatic diseases: three case reports and a review of the literature. *Ann Rheum Dis* 62:50–57
 219. Warsch S, Hosein PJ, Morris MI, Teomete U, Benveniste R, Chapman JR, Lossos IS (2012) Progressive multifocal leukoencephalopathy following treatment with bendamustine and rituximab. *Int J Hematol* 96:274–278
 220. Wattjes MP, Verhoeff L, Zentjens W, Killestein J, van Munster ET, Barkhof F, van Eijk JJ (2013) Punctate lesion pattern suggestive of perivascular inflammation in acute natalizumab-associated progressive multifocal leukoencephalopathy: productive JC virus infection or preclinical PML-IRIS manifestation? *J Neurol Neurosurg Psychiatry* 84:1176–1177
 221. Wattjes MP, Vennegoor A, Mostert J, van Oosten BW, Barkhof F, Killestein J (2014) Diagnosis of asymptomatic natalizumab-associated PML: are we between a rock and a hard place? *J Neurol* 261:1139–1143
 222. Weber SC, Uhlenberg B, Raile K, Querfeld U, Muller D (2011) Polyoma virus-associated progressive multifocal leukoencephalopathy after renal transplantation: regression following withdrawal of mycophenolate mofetil. *Pediatr Transplant* 15:E19–E24
 223. Wenning W, Haghikia A, Laubenberger J, Clifford DB, Behrens PF, Chan A, Gold R (2009) Treatment of progressive multifocal

- leukoencephalopathy associated with natalizumab. *N Engl J Med* 361:1075–1080
224. White RP, Abraham S, Singhal S, Manji H, Clarke CR (2002) Progressive multifocal leukoencephalopathy isolated to the posterior fossa in a patient with systemic lupus erythematosus. *Rheumatology (Oxford)* 41:826–827
 225. Worthmann F, Turker T, Muller AR, Patt S, Stoltenburg-Didinger G (1994) Progressive multifocal leukoencephalopathy after orthotopic liver transplantation. *Transplantation* 57:1268–1271
 226. Wuthrich C, Popescu BF, Gheuens S, Marvi M, Ziman R, Deng SP, Tham M, Norton E, Parisi JE, Dang X, Lucchinetti CF, Koralnik IJ (2013) Natalizumab-associated progressive multifocal leukoencephalopathy in a patient with multiple sclerosis: a postmortem study. *J Neuropathol Exp Neurol* 72:1043–1051
 227. Yehia B, Davison A, Sisson S (2009) Transplant troubles. *Am J Med* 122:629–631
 228. Yokoyama H, Watanabe T, Maruyama D, Kim SW, Kobayashi Y, Tobinai K (2008) Progressive multifocal leukoencephalopathy in a patient with B-cell lymphoma during rituximab-containing chemotherapy: case report and review of the literature. *Int J Hematol* 88:443–447
 229. Zabernigg A, Maier H, Thaler J, Gattringer C (1994) Late-onset fatal neurological toxicity of fludarabine. *Lancet* 344:1780
 230. Zivadinov R, Dwyer MG, Hussein S, Carl E, Kennedy C, Andrews M, Hojnacki D, Heininen-Brown M, Willis L, Chervenka M, Bergsland N, Weinstock-Guttman B (2012) Voxel-wise magnetization transfer imaging study of effects of natalizumab and IFNbeta-1a in multiple sclerosis. *Mult Scler* 18:1125–1134
 231. ZuRhein GM, Varakis J (1974) Letter: progressive multifocal leukoencephalopathy in a renal-allograft recipient. *N Engl J Med* 291:798
 232. Gheuens S, Smith DR, Wang X, Alsop DC, Lenkinski RE, Koralnik IJ (2012) Simultaneous PML-IRIS after discontinuation of natalizumab in a patient with MS. *Neurology* 78:1390–1393
 233. Havla J, Hohlfeld R, Kumpfel T (2014) Unusual natalizumab-associated progressive multifocal leukoencephalopathy starting in the brainstem. *J Neurol* 261:232–234
 234. Metz I, Radue EW, Oterino A, Kumpfel T, Wiendl H, Schippling S, Kuhle J, Sahraian MA, Gray F, Jakl V, Hausler D, Bruck W (2012) Pathology of immune reconstitution inflammatory syndrome in multiple sclerosis with natalizumab-associated progressive multifocal leukoencephalopathy. *Acta Neuropathol* 123:235–245
 235. Eisele P, Szabo K, Hornberger E, Griebe M, Hennerici MG, Kieseier BC, Gass A (2014) Presumptive progressive multifocal leukoencephalopathy in multiple sclerosis after natalizumab therapy. *J Neuroimaging* 24:425–428
 236. Blinkenberg M, Sellebjerg F, Leffers AM, Madsen CG, Sorensen PS (2013) Clinically silent PML and prolonged immune reconstitution inflammatory syndrome in a patient with multiple sclerosis treated with natalizumab. *Mult Scler* 19:1226–1229
 237. Paues J, Vrethem M (2010) Fatal progressive multifocal leukoencephalopathy in a patient with non-Hodgkin lymphoma treated with rituximab. *J Clin Virol* 48:291–293
 238. Belhassen-Garcia M, Rabano-Gutierrez A, Velasco-Tirado V, Romero-Alegria A, Perez-Garcia ML, Martin-Oterino JA (2015) Atypical progressive multifocal leukoencephalopathy in a patient with antisynthetase syndrome. *Intern Med* 54:519–524
 239. Hopfinger G, Plessl A, Grisold W, Klimpfinger M, Hoftberger R, Bernt R, Mostl M, Waldner R, Pittermann-Hocker E (2008) Progressive multifocal leukoencephalopathy after rituximab in a patient with relapsed follicular lymphoma and low IgG levels and a low CD4+ lymphocyte count. *Leuk Lymphoma* 49:2367–2369
 240. Boster A, Hreha S, Berger JR, Bao F, Penmesta R, Tselis A, Endress C, Zak I, Perumal J, Caon C, Vazquez J, Tyler KL, Racke MK, Millis S, Khan O (2009) Progressive multifocal leukoencephalopathy and relapsing-remitting multiple sclerosis: a comparative study. *Arch Neurol* 66:593–599
 241. Kappos L, Bates D, Edan G, Eraksoy M, Garcia-Merino A, Grigoriadis N, Hartung HP, Havrdova E, Hillert J, Hohlfeld R, Kremenchutzky M, Lyon-Caen O, Miller A, Pozzilli C, Ravnborg M, Saida T, Sindic C, Vass K, Clifford DB, Hauser S, Major EO, O'Connor PW, Weiner HL, Clanet M, Gold R, Hirsch HH, Radu EW, Sorensen PS, King J (2011) Natalizumab treatment for multiple sclerosis: updated recommendations for patient selection and monitoring. *Lancet Neurol* 10:745–758
 242. Sinnecker T, Othman J, Kuhl M, Mекle R, Selbig I, Niendorf T, Kunkel A, Wienecke P, Kern P, Paul F, Faiss J, Wuerfel J (2015) 7T MRI in natalizumab-associated PML and ongoing MS disease activity: a case study. *Neurol Neuroimmunol Neuroinflamm* 2:e171
 243. Wattjes MP, Rovira À, Miller D, Yousry TA, Sormani MP, de Stefano MP, Tintoré M, Auger C, Tur C, Filippi M, Rocca MA, Fazekas F, Kappos L, Polman C, Barkhof F, Montalban X; MAGNIMS study group (2015) Evidence-based guidelines: MAGNIMS consensus guidelines on the use of MRI in multiple sclerosis-establishing disease prognosis and monitoring patients. *Nat Rev Neurol* 11:597–606
 244. McGuigan C, Craner M, Guadagno J, Kapoor R, Mazibrada G, Molyneux P, Nicholas R, Palace J, Pearson OR, Rog D, Young CA (2015) Stratification and monitoring of natalizumab-associated progressive multifocal leukoencephalopathy risk: recommendations from an expert group. *J Neurol Neurosurg Psychiatry* 87:117–125
 245. Warnke C, von Geldern G, Markwerth P, Dehmel T, Hoepner R, Gold R, Pawlita M, Kumpfel T, Maurer M, Stangel M, Wegner F, Hohlfeld R, Straeten V, Limmroth V, Weber T, Hermesen D, Kleinschnitz C, Hartung HP, Wattjes MP, Svenningsson A, Major E, Olsson T, Kieseier BC, Adams O (2014) Cerebrospinal fluid JC virus antibody index for diagnosis of natalizumab-associated progressive multifocal leukoencephalopathy. *Ann Neurol* 76:792–801
 246. Schneider-Hohendorf T, Rossaint J, Mohan H, Boning D, Breuer J, Kuhlmann T, Gross CC, Flanagan K, Sorokin L, Vestweber D, Zarbock A, Schwab N, Wiendl H (2014) VLA-4 blockade promotes differential routes into human CNS involving PSGL-1 rolling of T cells and MCAM-adhesion of TH17 cells. *J Exp Med* 211:1833–1846
 247. Berger JR, Pall L, Lanska D, Whiteman M (1998) Progressive multifocal leukoencephalopathy in patients with HIV infection. *J Neurovirol* 4:59–68
 248. Houry MN, Alsop DC, Agnihotri SP, Pfannl R, Wuthrich C, Ho ML, Hackney D, Ngo L, Anderson MP, Koralnik IJ (2014) Hyperintense cortical signal on magnetic resonance imaging reflects focal leukocortical encephalitis and seizure risk in progressive multifocal leukoencephalopathy. *Ann Neurol* 75:659–669
 249. Lima MA, Drislane FW, Koralnik IJ (2006) Seizures and their outcome in progressive multifocal leukoencephalopathy. *Neurology* 66:262–264
 250. Davis MJ, Khan A, Royal W III (2013) Progressive multifocal leukoencephalopathy as the first manifestation of occult sarcoidosis: case report and review of the literature. *Neurologist* 19:26–29
 251. Molloy ES, Calabrese LH (2008) Progressive multifocal leukoencephalopathy in patients with rheumatic diseases: are patients with systemic lupus erythematosus at particular risk? *Autoimmun Rev* 8:144–146