

## RESEARCH ARTICLE

## Open Access

# The influence of LiDAR pulse density and plot size on the accuracy of New Zealand plantation stand volume equations

Michael S Watt<sup>1\*</sup>, Thomas Adams<sup>2</sup>, Susana Gonzalez Aracil<sup>3</sup>, Hamish Marshall<sup>3</sup> and Pete Watt<sup>4</sup>

## Abstract

**Background:** LiDAR is an established technology that is increasingly being used to characterise spatial variation in important forest metrics such as total stem volume. The cost of forest inventory and LiDAR acquisition are strongly related to the inventory plot size and the LiDAR pulse density, respectively. It would therefore be beneficial to understand how reductions in these variables influence the strength of relationships between LiDAR and stand metrics. Although relatively high pulse densities are required for creating Digital Terrain Models (DTMs), once a DTM has been developed there is scope for reducing pulse density on subsequent flights to estimate stand metrics from LiDAR. This study used an extensive national dataset (for which the DTM had been characterised) obtained within New Zealand's planted forests. Using this dataset, the objective of this research was to investigate how variation in both pulse density and plot size influence the precision of relationships between LiDAR metrics and total stem volume.

**Methods:** LiDAR metrics were thinned to pulse densities ranging from 0.01 to 4 pulses  $m^{-2}$  across plot sizes ranging from 0.01 to 0.06 ha. For each pulse density/plot size combination regressions between LiDAR mean height and total stem volume were fitted using parameters fixed at values for the unthinned dataset or separately fitted for each pulse density/plot size combination.

**Results:** Using the unthinned dataset (plot size = 0.06 ha; pulse density = 4 pulses  $m^{-2}$ ) the relationship between the mean LiDAR height and total stem volume had a coefficient of determination ( $R^2$ ) of 0.77. Thinning of the data had little effect on  $R^2$  above plot sizes of 0.03 ha and pulse densities of 0.1 pulses  $m^{-2}$ . As pulse densities decreased below 0.1 pulses  $m^{-2}$  within plots of less than 0.025 ha, there was a sharp decline in  $R^2$  reaching values as low as 0.48 in plots of 0.01 ha with pulse densities of 0.01 pulses  $m^{-2}$ . Simulations where parameters were fixed yielded almost identical  $R^2$  values to those where they were refitted for each plot size/pulse density combination. The number of pulses per plot integrates the effect of these two factors, with little change in the precision of the volume function until a threshold of 100 pulses per plot was reached.

**Conclusions:** This study showed that the precision of LiDAR-volume equations was relatively insensitive to reductions in pulse density and plot size when an accurate DTM was available. Acquisition of LiDAR information at lower pulse densities is likely to markedly improve the cost efficacy of this information for inventory purposes.

**Keywords:** Airborne laser scanning; ALS; LiDAR; Forest inventory; Laser; *Pinus radiata*

\* Correspondence: [michael.watt@scionresearch.com](mailto:michael.watt@scionresearch.com)

<sup>1</sup>Scion, PO Box 29237, Fendalton, Christchurch, New Zealand

Full list of author information is available at the end of the article

## Background

LiDAR is an established technology that is increasingly being used to derive spatial stand metrics, which is increasing the accuracy and efficiency of operational forest inventory. Since the first application of LiDAR in forestry almost three decades ago (Nelson et al. 1984), the technology has been widely used to quantify spatial variation in stand height, basal area (Watt 2005; Means et al. 1999), diameter, volume (Næsset 1997), canopy properties (Næsset and Okland 2002) and species composition (Donoghue et al. 2007). The strength of LiDAR lies in its ability to provide accurate distance information and to penetrate the canopy, thereby providing information on both the horizontal and vertical distribution of vegetation structure.

As stem volume is a key determinant of forest value, the use of LiDAR to provide an unbiased and accurate estimate of this stand dimension is of considerable interest to forest managers. Volume is typically determined from inventory measurements that are often time-consuming and expensive. Metrics derived from LiDAR have been shown to exhibit moderate to strong relationships with stem volume across a range of different coniferous species (Næsset 1997; Means et al. 2000), demonstrating the potential of LiDAR for inventory purposes. Compared to traditional inventory, with only plot-based measurements, LiDAR has a number of potential advantages that include increased fine scale spatial resolution, lower costs and increased precision (Næsset 2002; Holmgren and Jonsson 2004).

Field inventory costs increase markedly with plot size, and LiDAR costs increase with pulse density. Consequently a key issue requiring investigation is how far these elements can be reduced without compromising precision of the regression between LiDAR metrics and volume. Development of accurate LiDAR height metrics are reliant on an accurate digital terrain model (DTM) as the canopy returns must be converted from elevation above sea-level to height above the DTM. However, once an accurate DTM has been obtained it should be possible to reduce the pulse density for the estimation of volume.

The influence of pulse density on the precision of relationships between stand and LiDAR metrics has been widely investigated. In stands dominated by Norway spruce (*Picea abies* (L.) Karst.) and Scots pine (*Pinus sylvestris* L.), Gobakken and Næsset (2008) found that point densities could be reduced from 1.13 point to 0.25 points m<sup>-2</sup> with little effect on the quality of inventory results. In a mixed conifer forest, where pulse densities were reduced from 9 to 0.01 pulses m<sup>-2</sup>, it was found that correlations between LiDAR metrics and key stand metrics (tree height, diameter at breast height, and total basal area) were relatively unaffected until pulse densities were reduced below 1 pulse m<sup>-2</sup> (Jakubowski et al. 2013). In mixed conifer-hardwood stands, it was found that pulse density could be

reduced from 3.2 to 0.5 pulses m<sup>-2</sup> with little effect on the precision of relationships between LiDAR and stand metrics (Treitz et al. 2012).

Fewer studies have investigated how plot size and the interaction between pulse density and plot size influence the precision of regressions between field measurements and canopy metrics. In general the homogeneity of canopies in even-aged forests allows for reductions of plot sizes to 0.02 ha, without substantial deterioration of the LiDAR-volume relationships (Gobakken and Næsset 2008). There are, however, substantial differences in this homogeneity between different forest types that may necessitate variation in plot sizes to accommodate this. This homogeneity ranges from high (in very dense unthinned planted stands with few gaps) through moderate (in thinned planted stands with greater ground area) to low (in natural forests).

Research is required that investigates how plot size and pulse density influence the quality of LiDAR-volume relationships across planted forest stands that include a wide variation in stand densities. Ideally, other important factors that influence estimation of canopy metrics, such as the laser system, flight specifications, data characteristics and data processing steps should be maintained constant to mitigate their influence. The characteristics described were part of a recently acquired LiDAR dataset that sampled the entire extent of New Zealand's predominantly *Pinus radiata* D. Don (radiata pine) resource. Using this dataset, the objective of this research was to investigate how pulse density and plot size influence the precision of LiDAR metric-volume relationships.

## Methods

### Dataset used

The dataset used was from a national inventory of planted forests (LUCAS) undertaken to measure and monitor temporal change in national carbon stocks. This inventory was undertaken by New Zealand as part of its obligations under the Kyoto Protocol and the United Nations Framework Convention on Climate Change (Beets et al. 2010). This dataset has been fully described previously (Beets et al. 2012; Stephens et al. 2012; Stephens et al. 2007).

**Table 1 Summary of key LiDAR settings for the dataset collected**

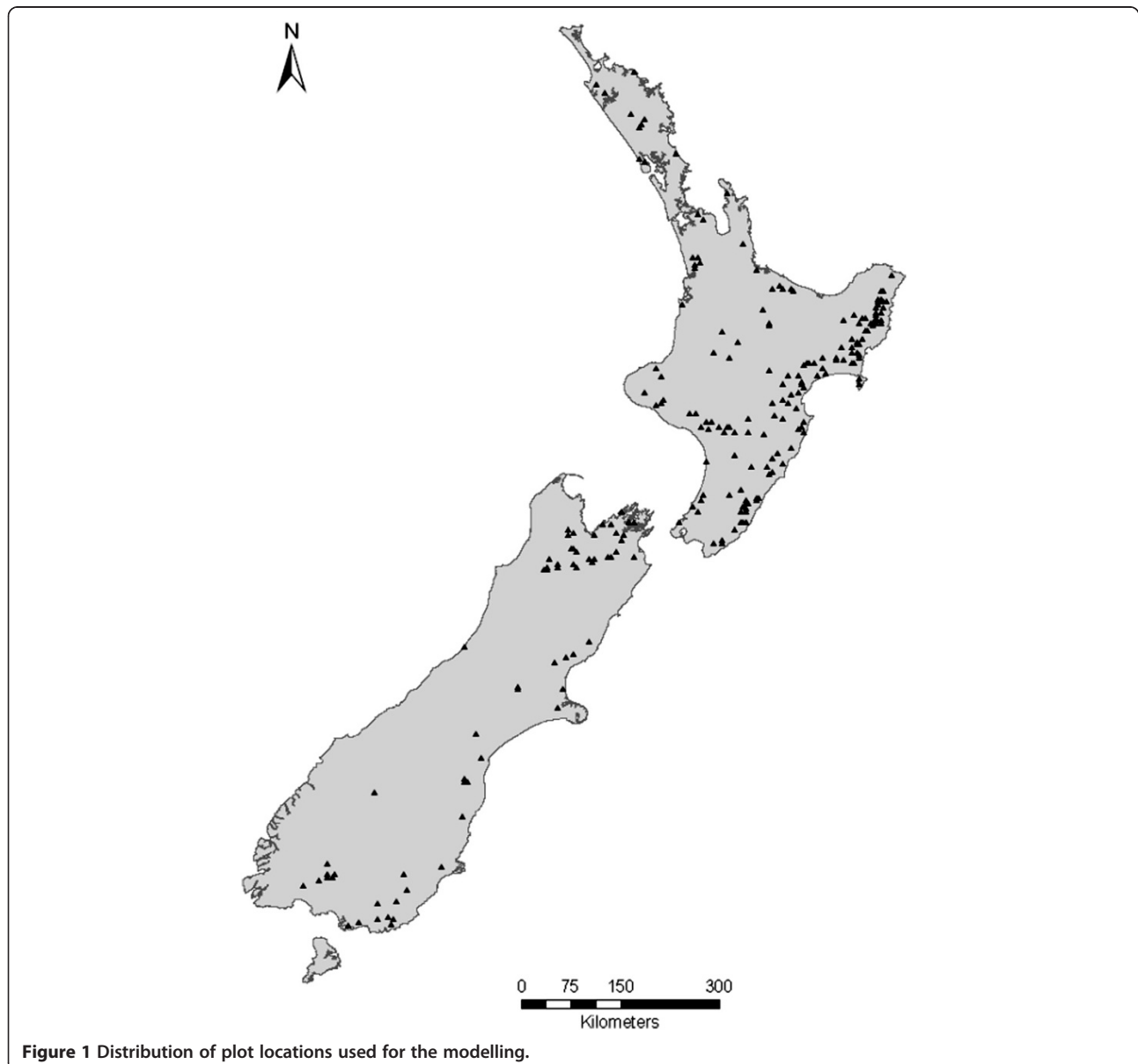
Variable	Value
Wavelength (nm)	1064
Scan angle (deg.)	± 6
Pulse frequency (kHz)	70
Scan frequency (Hz)	53
Footprint diameter (m)	0.27
Ground speed (knots)	105
Flying height (m)	1200

In stands established after 1 January 1990, circular plots with an area of 0.06 ha were installed between June and September 2008 using a regular systematic 4 km grid. In stands established prior to 1990, plots of 0.06 ha were installed during 2010 on an 8 km grid. Field plot centres were located using a 12-channel differentially corrected global positioning system (GPS) to within  $\pm 3$  m.

The LiDAR survey was undertaken aerially using a Cessna 207 aircraft in February 2008 (for pre-1990 forests) and 2010 (for post-1989 forests) using a small footprint ( $\sim 0.20$  m) Optech ALTM 3100EA system integrated with a Rollei AIC digital camera. The LiDAR settings used to achieve first-return pulse densities of at least 3 returns  $m^{-2}$

are summarised in Table 1. The system also utilised an Applanix 510 Position and Orientation System (POS) that uses GPS and inertial measurement unit (IMU) sensors, and a GPS-based computer controlled navigation system.

From this dataset, LiDAR metrics and stand information for 374 plots were extracted for the analysis. These data were taken across a range of plantation species that included plot representation of the following species: 350 plots (94%) in *Pinus radiata*, 13 plots (3%) in *Pseudotsuga menziesii* var *menziesii* (Mirb.) Franco (Douglas-fir), 7 plots (2%) in *Eucalyptus nitens* H.Deane & Maiden (shining gum), and the remaining four plots within stands with minor species. The distribution of these plots is shown in Figure 1.



**Figure 1** Distribution of plot locations used for the modelling.

**Table 2 Summary statistics describing the dataset**

Variable	Mean	Range
<i>Stand metrics</i>		
Stem volume (m <sup>3</sup> ha <sup>-1</sup> )	240 (9.9)	0.05 – 1020
Crop stocking (stems ha <sup>-1</sup> )	464 (18)	17 – 2283
<i>LiDAR metrics</i>		
Canopy cover (%)	69.7 (1.1)	1.4 – 99.1
Height of 30th percentile (m)	9.2 (0.3)	0.6 – 30.7
Mean height (m)	11.3 (0.3)	0.7 – 31.2
Height of 95th percentile (m)	17.8 (0.5)	1.0 – 43.1

Shown are the mean and standard error (in brackets) along with the data range. LiDAR metrics shown include values from all returns.

Diameter at breast height (dbh) was recorded for each plot tree. A sample of at least 16 trees per crop type (i.e. silvicultural regime, age, species etc.) within each plot also had height measured. A plot-specific height-diameter relationship was used to determine height of any remaining trees in the plot. The bearing and distance from each tree to the plot centre was recorded. Stand slope was measured using an inclinometer and defined as the average of the maximum gradient at the plot centre and the gradient at ninety degrees to that.

Within the dataset there was a wide range in stand and LiDAR metrics (Table 2). Stand density ranged from 17 – 2283 stems ha<sup>-1</sup> which exceeds the normal operational range found within planted forests in New Zealand. Total stem volume ranged from 0.048 to 1020 m<sup>3</sup> ha<sup>-1</sup>. LiDAR metrics also ranged widely with most variation noted in the 30th height percentile which ranged 51-fold from 0.6 to 30.7 m (Table 2).

#### Processing of LiDAR and field data

Following the method described in Gonzalez Aracil (2011), which uses the equations described in Goulding (1995), individual tree volumes were determined from diameter and measurements (or estimations) of height. Summation of these volumes yielded a plot level estimate of total stem volume. Measurements of distance and bearing allowed total stem volume to be recalculated under a range of plot sizes. Where the plots were on sloping ground, a slope-corrected radius was used (Hayes 2005), both for the original plots and the simulated reduced size plots.

Terra-Scan software was used to classify ground and non-ground returns using the algorithm described by Axelsson (2000). Manual identification of breaklines by skilled operators was undertaken to improve DTM quality. These classified ground returns were used to construct a DTM by connecting them into a Triangulated Irregular Network (TIN), and then linearly interpolating them onto a regular grid. Pulses were extracted individually from the data and assimilated using the raw coordinates. The DTM grid size

was 1 m, but linearly interpolated to the exact horizontal return location for more accurate ground characterisation.

LiDAR data were extracted for each plot assuming a circular plot shape. Although field plots were often elliptical, previous research demonstrates the assumption of circularity to have little effect on values for key LiDAR height metrics (<0.22%) within this dataset (Adams and Pont 2012). LiDAR metrics extracted for the analysis included the 30th, 70th and 95th height percentiles, mean height and canopy cover (percentage of returns from above a cut-off of 0.5 m to remove the understorey) as these are widely used for development of volume equations. The described LiDAR metrics were generated from all returns.

#### Thinning of LiDAR dataset

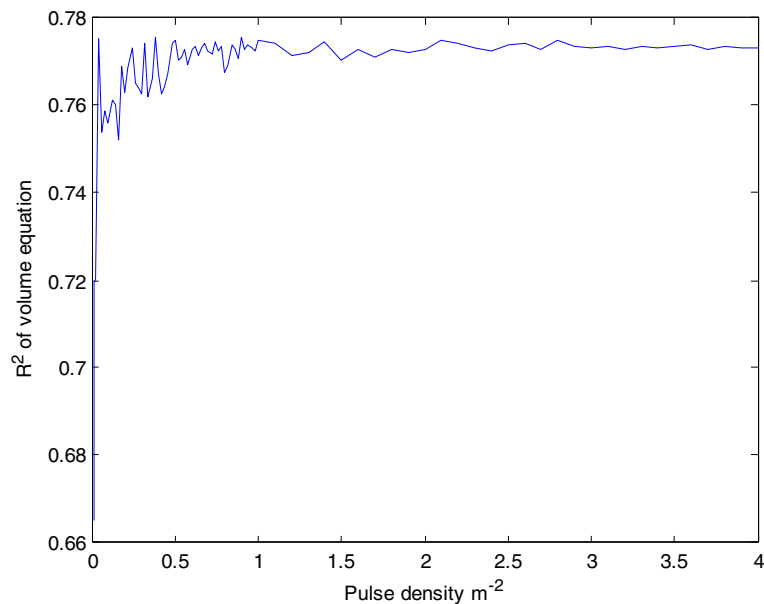
For the unthinned dataset (plot size = 0.06 ha; pulse density = 4 returns m<sup>-2</sup>) the best model describing total stem volume was,

$$V = \alpha H_m + \beta \quad (1)$$

where  $V$  is the total stem volume (m<sup>3</sup> ha<sup>-1</sup>),  $H_m$  is the mean LiDAR height (m), and  $\alpha$ ,  $\beta$  are the regression coefficients, which had respective values of 28.02 and -76.45. This relationship had a  $R^2$  of 0.77. Addition of further variables to this model did not substantially improve model accuracy.

Models of  $V$  were developed under a wide range of plot size and pulse densities using the independent variable ( $H_m$ ) described in Equation 1. LiDAR metrics were thinned to 84 different pulse densities ranging from 4 pulses m<sup>-2</sup> to 0.01 pulses m<sup>-2</sup> for plot sizes ranging from 0.01 to 0.06 ha (in 0.005 ha intervals). The raw data was thinned to remove a specified proportion of pulses (and all corresponding returns). Each iteration removed a random set of pulses from the original dataset, so successive thinnings would not contain the same pulses.

Statistics were extracted for two sets of simulations. In the first set, coefficients in the volume equation were refitted for each pulse density/plot size combination. In the second set, coefficients in the volume equation were fixed at those used for the highest plot size (0.06 ha) and pulse density (4 pulses m<sup>-2</sup>). For both sets of simulations, the coefficient of determination ( $R^2$ ) was obtained for each pulse density/plot size combination. For plot size/pulse density combinations in the first simulation the percentage variation in coefficients of the regression equation was determined as the mean percentage change in each of the two regression coefficients, compared to their original values (for a plot size of 0.06 ha and pulse density of 4 returns m<sup>-2</sup>).



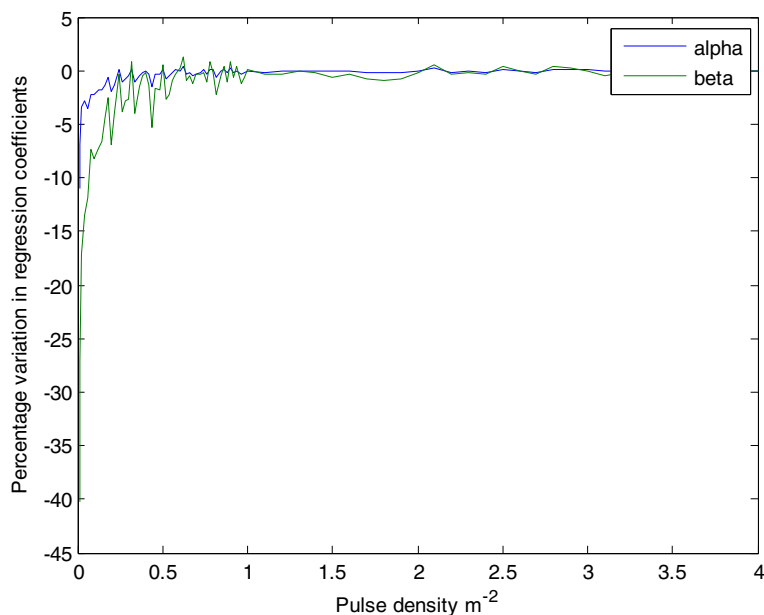
**Figure 2** Relationship between pulse density and the coefficient of determination ( $R^2$ ) for simulations where a fixed plot size of 0.06 ha was used.

## Results

### Influence of pulse density on model precision

For the first set of simulations, where coefficients were allowed to vary, the model performance ( $R^2$ ) remained relatively constant in response to reductions in pulse density until values were reduced below 0.5 pulses  $m^{-2}$  (Figure 2). Following this there was a marked decline in  $R^2$ . The

coefficients in the regression were almost constant above 1 pulse  $m^{-2}$  (varying by less than 0.4%), and only varied by more than 5% for the  $\beta$  coefficient (see Equation 1) with pulse densities less than 0.25 pulses  $m^{-2}$  (Figure 3). This stability was also apparent in the very low variation in model precision between simulations with fixed and varying coefficients. Differences in the coefficient of determination ( $R^2$ )



**Figure 3** Relationship between pulse density and percentage variation in coefficients of the regression equation (described in Eqn. 1) for simulations where a fixed plot size of 0.06 ha was used.

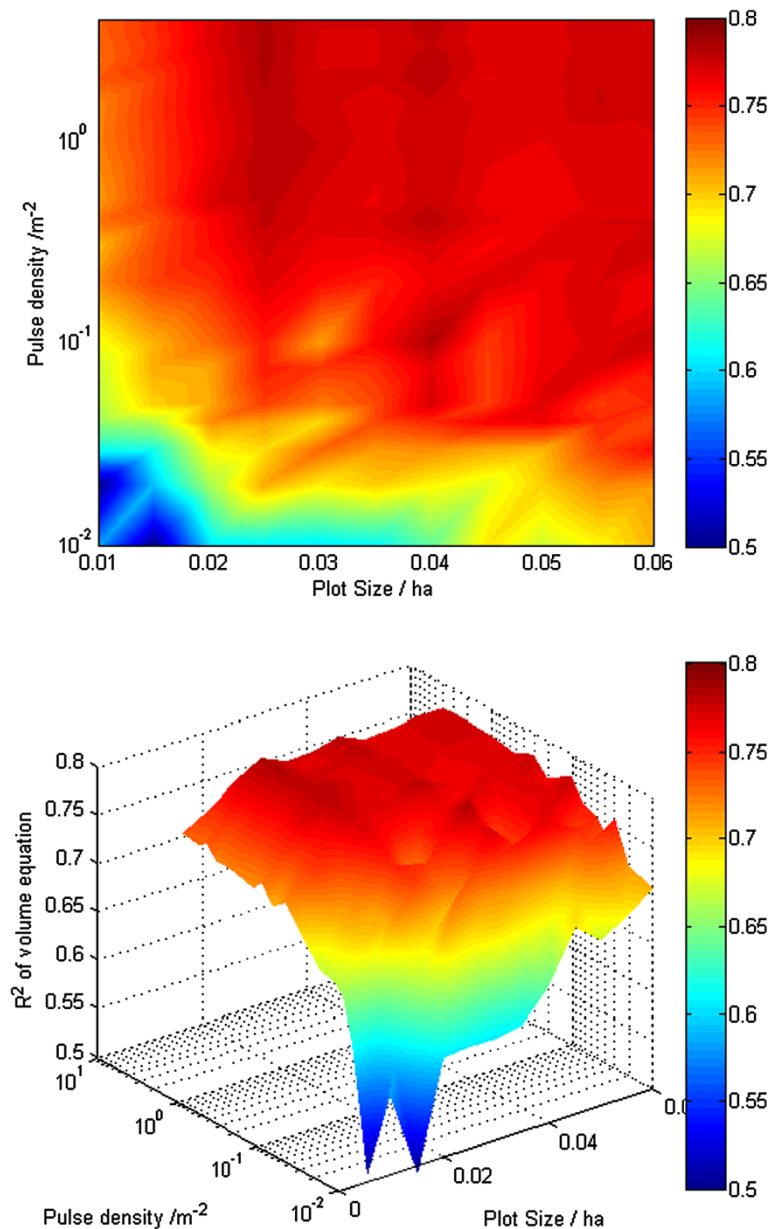
between the two simulations, for a given pulse density, did not exceed  $10^{-15}$ .

#### Influence of plot size and pulse density on model precision

For the first set of analyses where the coefficients were allowed to vary, the coefficient of determination ( $R^2$ ) exhibited little change from the base value of 0.77 for plot sizes greater than 0.03 ha where the pulse density exceeded *ca.* 0.1 pulses  $m^{-2}$  (Figure 4). As long as pulse densities were maintained above 0.1 pulses  $m^{-2}$ , reductions in plot size to 0.01 ha resulted in only moderate losses in  $R^2$  of up to *ca.*

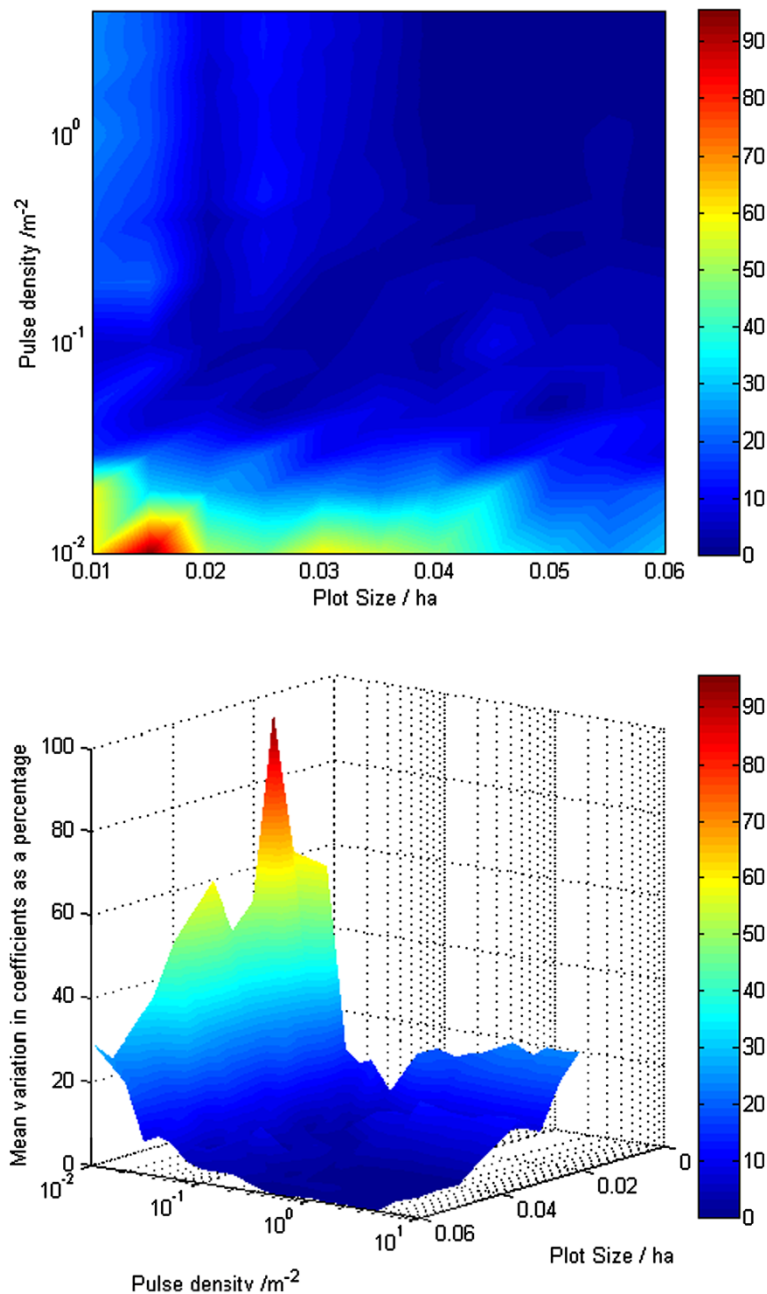
0.03 (from *ca.* 0.77 to 0.74). Similarly, at plot sizes exceeding 0.025 ha, pulse densities could be reduced to 0.01 pulses  $m^{-2}$ , with only moderate losses in  $R^2$  to 0.60 (Figure 4). As pulse densities declined below 0.1 pulses  $m^{-2}$  within plots of less than 0.025 ha, there was a sharp decline in  $R^2$  reaching values as low as 0.48 in plots of 0.01 ha with pulse densities of 0.01 pulses  $m^{-2}$  (Figure 4).

At pulse densities exceeding 0.5 pulses  $m^{-2}$ , coefficients in the volume function were very stable across plot sizes greater than 0.04 ha, exhibiting less than 1% variation from the base coefficients (Figure 5). The average variation



**Figure 4** Relationship between coefficient of determination ( $R^2$ ) for the volume equation and plot size and pulse density. Values are shown as a checkerboard plot (top) and as a 3D surface (bottom). The colour scale shows variation in  $R^2$  for the volume equation.





**Figure 5** The relationship between mean percentage variation in regression coefficients for the LiDAR volume equation and plot size and pulse density. Values are shown as a checkerboard plot (top) and 3D surface (bottom). The colour scale shows percentage variation in regression coefficients.

of coefficients was never more than 13% for all plots greater than 0.03 ha under pulse densities greater than 0.01 pulses per m<sup>2</sup>. There was a marked increase in average coefficient variation at very low pulse densities that was particularly pronounced as plot sizes declined below 0.025 ha (Figure 5).

Findings were very similar for simulations run with regression coefficients fixed at values found for the highest

plot size (0.06 ha) and pulse density (4 pulses m<sup>-2</sup>). These simulations show a very similar decline in  $R^2$  to those where parameters were refitted (i.e. Figure 4), with absolute differences in  $R^2$  not exceeding  $10^{-15}$ . As  $R^2$  values for these simulations were indistinguishable from those in Figure 4 these data are not shown.

Regression of the number of pulses per plot against model precision integrated the effect of the plot size and

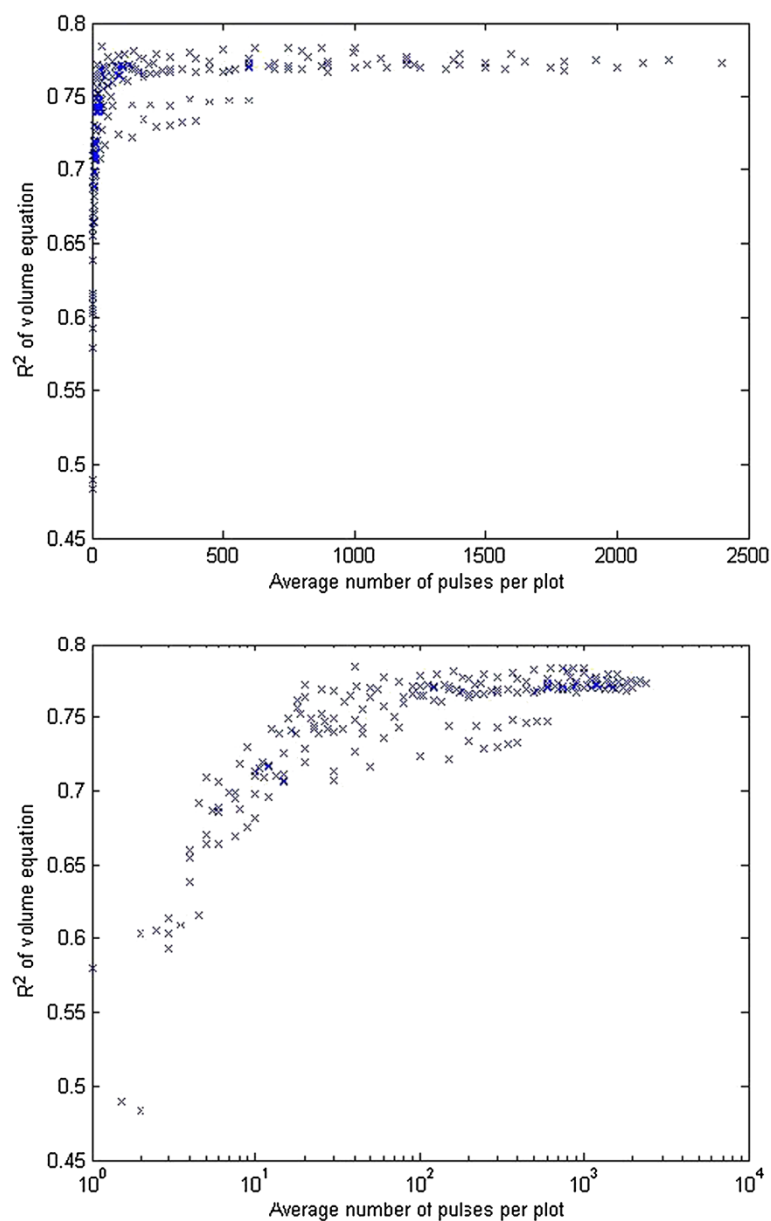
pulse density, described previously. The coefficient of determination did not markedly decline until a threshold value of 100 pulses per plot was reached (Figure 6).

### Discussion

The results from this study are broadly consistent with previous research investigating the effects of plot size and pulse density on precision of relationships between LiDAR and canopy metrics. Most studies have found that LiDAR pulse densities can be reduced to between 0.06 – 0.5 pulses  $m^{-2}$  with little consequent effect on precision of canopy metrics (Goodwin et al. 2006; Næsset 2004a; Gobakken and

Næsset 2008; Treitz et al. 2012; Jakubowski et al. 2013). Similarly, previous research has shown that reductions in plot size are possible to 0.02 ha without negative impacts on the precision of regressions between LiDAR metrics and volume (Gobakken and Næsset 2008).

This study extends previous research by examining the combined effect of plot size and pulse density on model precision. When these two variables were examined in combination, little deterioration in the precision of the volume function was noted for plot sizes greater than 0.03 ha where the pulse density exceeded *ca.* 0.1 pulses  $m^{-2}$ . Analyses indicate that the number of pulses per plot integrates



**Figure 6** The relationship between the coefficient of determination ( $R^2$ ) of the volume equation and number of pulses per plot, with values on the x-axis plotted using a linear scale (top) and log scale (bottom).



the effect of these two factors, with little change in the precision of the volume function until a threshold of 100 pulses per plot is reached. Once this point is reached there are too few pulses to enable the calculation of robust LiDAR metrics. The volume equation was found to be stable across most pulse density and plot size combinations. The effect of data thinning on  $R^2$  hardly varied between simulations where the parameters were held constant or allowed to change.

The relatively low sensitivity of model precision to pulse density demonstrated in this study has implications for the cost effectiveness of LiDAR as an inventory tool. Currently most LiDAR is acquired within forests at a pulse density of between 1–2 pulses  $m^{-2}$  in New Zealand (New Zealand Aerial Mapping pers. comm.). Reduction of the pulse density to well below these levels, under situations where an accurate DTM is available, would markedly increase the cost efficacy of LiDAR as a tool for describing spatial variation in canopy metrics.

In an operational setting, pulse density and LiDAR acquisition cost can be reduced through flying faster, reducing the swath overlap or flying at higher altitude. Increases in aircraft speed or a reduction in the swath overlap will reduce the pulse density without influencing other specifications such as footprint diameter and ability of the laser to penetrate the canopy (Magnusson et al. 2010).

In contrast, flying at a higher altitude affects several features of the data. The footprint diameter and swath width increases while the reflected energy, ability of the laser to penetrate the canopy, and maximum pulse repetition frequency decline (Magnusson et al. 2010). As a result of these changes flying at higher altitude results in a change in the distribution of echo categories, an upward shift in the canopy-height distribution and a lower proportion of multiple returns (Goodwin et al. 2006; Næsset 2004b, 2009). Although changes to these features do not significantly affect the precision of regression equations for common stand metrics, such as height and stand volume, coefficients in the regression equations are likely to change between acquisitions at different altitudes (Næsset 2004b, 2009).

## Conclusions

This study demonstrates the relative insensitivity of precision in LiDAR-derived models of volume to changes in plot size and pulse density. Little change in  $R^2$  was noted until data were reduced to plot sizes of 0.03 ha and pulse densities of 0.1 pulses  $m^{-2}$ . Simulations where model parameters were fixed yielded almost identical results to those where parameters were refitted to each combination of plot size/pulse density. Acquisition of LiDAR data at lower pulse densities will markedly improve the cost-effectiveness of this technology for inventory purposes.

## Competing interests

The authors declare that they have no competing interests

## Authors' contributions

MSW was the primary author. TA processed the LiDAR data, extracted metrics and undertook analyses. SGA, HM and PW assisted with the writing and provision of technical detail. All authors read and approved the final manuscript.

## Acknowledgements

We are very grateful to the Ministry for the Environment (MfE) for providing permission to use the data described in this paper. This project was funded within the Intensive Forest Systems project of Future Forests Research Ltd. The authors are grateful to Interpine for provision of the LUCAS dataset. We thank Marie Heaphy for producing Figure 1.

## Author details

<sup>1</sup>Scion, PO Box 29237, Fendalton, Christchurch, New Zealand. <sup>2</sup>MetService, 30 Salamanca Road, Kelburn, Wellington 6021, New Zealand. <sup>3</sup>Interpine, 99 Sala Street, PO Box 1209, Rotorua 3010, New Zealand. <sup>4</sup>Indufor Asia-Pacific Ltd, PO Box 105039, Auckland, New Zealand.

Received: 21 October 2013 Accepted: 21 October 2013

Published: 15 Nov 2013

## References

- Adams, T, & Pont, D. (2012). Projecting plots in LiDAR - Correcting for slope in remotely sensed data. *New Zealand Journal of Forestry*, *57*, 25–31.
- Axelsson, P. (2000). DEM generation from laser scanner data using adaptive tin models. *International Archives of Photogrammetry and Remote Sensing*, *33*, 111–118.
- Beets, PN, Brandon, A, Fraser, BV, Goulding, CJ, Lane, PM, & Stephens, PR. (2010). National Forest Inventories Report: New Zealand. In E Tomppo, T Gschwanter, M Lawrence, & RE McRoberts (Eds.), *National Forest Inventories: Pathways for Common Reporting* (pp. 391–410). Heidelberg, Germany: Springer.
- Beets, PN, Brandon, AM, Goulding, CJ, Kimberley, MO, Paul, TSH, & Searles, N. (2012). The inventory of carbon stock in New Zealand's post-1989 planted forest for reporting under the Kyoto protocol. *Forest Ecology and Management*, *262*, 1119–1130.
- Donoghue, DNM, Watt, PJ, Cox, NJ, & Wilson, J. (2007). Remote sensing of species mixtures in conifer plantations using LiDAR height and intensity data. *Remote Sensing Environment*, *110*, 509–522.
- Gobakken, T, & Næsset, E. (2008). Assessing effects of laser point density, ground sampling intensity, and field sample plot size on biophysical stand properties derived from airborne laser scanner data. *Canadian Journal of Forest Research-Revue Canadienne De Recherche Forestiere*, *38*(5), 1095–1109. doi:10.1139/X07-219.
- Gonzalez Aracil, S. (2011). *The impact of plot size on LiDAR volume relationships in forest inventories - Masters Thesis*. Madrid, Spain: Universidad se Alcalá.
- Goodwin, NR, Coops, NC, & Culvenor, DS. (2006). Assessment of forest structure with airborne LiDAR and the effects of platform altitude. *Remote Sensing of Environment*, *103*(2), 140–152.
- Goulding, CJ. (1995). Individual tree volume, taper, bark, and breakage equations. In D Hammond (Ed.), *NZIF 1995 Forestry Handbook* (3rd ed.). Christchurch, New Zealand: New Zealand Institute of Forestry (Inc.).
- Hayes, JD. (2005). Sample plots techniques and tables. In M Colley (Ed.), *Forestry Handbook*. Rotorua, New Zealand: New Zealand Institute of Forestry.
- Holmgren, G, & Jonsson, T. (2004). Large scale airborne laser scanning of forest resources in Sweden. *International Archives of photogrammetry, remote sensing and spatial information sciences*, *XXXVI*, 8/W2.
- Jakubowski, MK, Guo, QH, & Kelly, M. (2013). Tradeoffs between lidar pulse density and forest measurement accuracy. *Remote Sensing of Environment*, *130*, 245–253. doi:DOI 10.1016/j.rse.2012.11.024.
- Magnusson, M, Fransson, JES, & Holmgren, J. (2010). Effects of estimation accuracy of forest variables using different pulse density of laser data. *Forest Science*, *53*, 619–626.
- Means, JE, Acker, SA, Fitt, BJ, Renslow, M, Emerson, L, & Hendrix, CJ. (2000). Predicting forest stand characteristics with airborne scanning LiDAR. *Photogrammetric Engineering and Remote Sensing*, *66*(11), 1367–1371.
- Means, JE, Acker, SA, Harding, DJ, Blair, JB, Lefsky, MA, Cohen, WB, et al. (1999). Use of large-footprint scanning airborne LiDAR to estimate forest stand

- characteristics in the Western Cascades of Oregon. *Remote Sensing of Environment*, 67(3), 298–308.
- Næsset, E. (1997). Estimating timber volume of forest stands using airborne laser scanner data. *Remote Sensing Of Environment*, 61(2), 246–253.
- Næsset, E. (2002). Predicting forest stand characteristics with airborne scanning laser using a practical two-stage procedure and field data. *Remote Sensing of Environment*, 80(1), 88–99.
- Næsset, E. (2004a). Effects of different flying altitudes on biophysical stand properties estimated from canopy height and density measured with a small-footprint airborne scanning laser. *Remote Sensing of Environment*, 91(2), 243–255.
- Næsset, E. (2004b). Effects of different flying altitudes on biophysical stand properties estimated from canopy height and density measured with a small-footprint airborne scanning laser. *Remote Sensing of Environment*, 92, 243–255.
- Næsset, E. (2009). Effects of different sensors, flying altitudes, and pulse repetition frequencies on forest canopy metrics and biophysical stand properties derived from small-footprint airborne laser data. *Remote Sensing of Environment*, 113(1), 148–159. doi:DOI 10.1016/j.rse.2008.09.001.
- Næsset, E. & Okland, T. (2002). Estimating tree height and tree crown properties using airborne scanning laser in a boreal nature reserve. *Remote Sensing of Environment*, 79(1), 105–115.
- Nelson, R, Krabill, W, & MacLean, G. (1984). Determining forest canopy characteristics using airborne laser data. *Remote Sensing of Environment*, 15, 201–212.
- Stephens, PR, Watt, PJ, Loubser, D, Haywood, A, & Kimberley, MO. (2007). Estimation of carbon stocks in New Zealand planted forests using airborne scanning LiDAR. *Workshop on Laser Scanning, September 12–14* (pp. 389–394). Finland: IAPRS XXXVI, Part 3/W52.
- Stephens, PS, Kimberley, MO, Beets, PN, Paul, TSH, Searles, NB, Bell, A, Brack, C, & Broadley, J. (2012). Airborne scanning LiDAR in a double sampling forest carbon inventory. *Remote Sensing of Environment*, 117, 348–357.
- Treitz, P, Lim, K, Woods, M, Pitt, D, Nesbitt, D, & Etheridge, D. (2012). LiDAR sampling density for forest resource inventories in Ontario, Canada. *Remote Sensing*, 4(4), 830–848. doi:Doi 10.3390/Rs4040830.
- Watt, PJ. (2005). *An evaluation of LiDAR and optical satellite data for the measurement of structural attributes in British upland conifer plantation forestry*. Doctoral thesis. England: Department of Geography, University of Durham.

10.1186/1179-5395-43-15

**Cite this article as:** Watt et al.: The influence of LiDAR pulse density and plot size on the accuracy of New Zealand plantation stand volume equations. *New Zealand Journal of Forestry Science* 2013, **43**:15

Submit your manuscript to a SpringerOpen<sup>®</sup> journal and benefit from:

- Convenient online submission
- Rigorous peer review
- Immediate publication on acceptance
- Open access: articles freely available online
- High visibility within the field
- Retaining the copyright to your article

Submit your next manuscript at ► [springeropen.com](http://springeropen.com)