

**RESEARCH****Open Access**

Cell-associated bacteria in the human lung microbiome

Robert P Dickson¹, John R Erb-Downward¹, Hallie C Prescott¹, Fernando J Martinez¹, Jeffrey L Curtis^{1,2}, Vibha N Lama¹ and Gary B Huffnagle^{1,3*}**Abstract**

Background: Recent studies have revealed that bronchoalveolar lavage (BAL) fluid contains previously unappreciated communities of bacteria. *In vitro* and *in vivo* studies have shown that host inflammatory signals prompt bacteria to disperse from cell-associated biofilms and adopt a virulent free-living phenotype. The proportion of the lung microbiota that is cell-associated is unknown.

Results: Forty-six BAL specimens were obtained from lung transplant recipients and divided into two aliquots: 'whole BAL' and 'acellular BAL,' the latter processed with a low-speed, short-duration centrifugation step. Both aliquots were analyzed via bacterial 16S rRNA gene pyrosequencing. The BAL specimens represented a wide spectrum of lung health, ranging from healthy and asymptomatic to acutely infected. Bacterial signal was detected in 52% of acellular BAL aliquots, fewer than were detected in whole BAL (96%, $p \leq 0.0001$). Detection of bacteria in acellular BAL was associated with indices of acute infection [BAL neutrophilia, high total bacterial (16S) DNA, low community diversity, $p < 0.01$ for all] and, independently, with low relative abundance of specific taxonomic groups ($p < 0.05$). When whole and acellular aliquots from the same bronchoscopy were directly compared, acellular BAL contained fewer bacterial species ($p < 0.05$); whole and acellular BAL similarity was positively associated with evidence of infection and negatively associated with relative abundance of several prominent taxa ($p < 0.001$). Acellular BAL contained decreased relative abundance of *Prevotella* spp. ($p < 0.05$) and *Pseudomonas fluorescens* ($p < 0.05$).

Conclusions: We present a novel methodological and analytical approach to the localization of lung microbiota and show that prominent members of the lung microbiome are cell-associated, potentially via biofilms, cell adhesion, or intracellularly.

Keywords: Lung microbiome, Bronchoalveolar lavage, 16S, Pyrosequencing, Pneumonia

Background

Novel techniques of culture-independent microbial identification have revealed that bronchoalveolar lavage (BAL) fluid acquired from healthy and diseased subjects contains diverse communities of previously unappreciated bacteria [1-4]. The location of these bacteria within the various compartments of the respiratory tract is unknown. Recent *in vitro* and *in vivo* studies have demonstrated that some biofilm-associated bacteria,

when stimulated by inflammation-associated host signals (fever, norepinephrine, free ATP), disperse from biofilms and adopt a planktonic phenotype with increased virulence [5].

Most lung microbiome studies to date have employed pyrosequencing of 16S rRNA gene amplicons obtained from whole BAL specimens [1], while others have used acellular BAL obtained via a low-speed, short-duration centrifugation step for eukaryotic cell removal [6,7]. This use of acellular BAL may exclude bacteria that are cell-associated via biofilms, cell-adhesion appendages, or intracellularly, though to date no published study has directly compared whole BAL to acellular BAL microbiota.

In this study, we sought to determine which members of the lung microbiome are predominantly cell-associated

* Correspondence: ghuff@umich.edu

¹Division of Pulmonary and Critical Care Medicine, Department of Internal Medicine, University of Michigan Medical School, Ann Arbor, MI 48109, USA

³Department of Microbiology and Immunology, University of Michigan Medical School, Ann Arbor, MI 48109, USA

Full list of author information is available at the end of the article

and which are free-living within the respiratory tract. We hypothesized that removal of eukaryotic cells from BAL fluid would alter the composition of the microbial communities identified by pyrosequencing, reflecting the selective removal of cell-associated bacteria. We further hypothesized that the predominance of free-living bacteria would be associated with indices of acute infection. To test these hypotheses, we designed an analysis of 46 clinically obtained BAL specimens, each analyzed for bacterial community membership using both whole and acellular BAL. All BAL specimens were obtained from lung transplant recipients, which represented a wide spectrum of lung health (ranging from healthy and asymptomatic to acutely infected). The respiratory pathogen profile in this group is similar both to that observed in healthcare-associated pneumonia as well as pneumonia in other immunocompromised states [8-10]. We present a novel methodological and analytical approach to the localization of lung microbiota and demonstrate that prominent members of the lung microbiome are cell-associated.

Results

Factors associated with detection of bacteria in acellular BAL

As described in the 'Methods' section, 46 BAL specimens were obtained from lung transplant recipients, with 46% collected for an acute clinical indication (dyspnea, cough, radiographic infiltrate, or decline in lung function) and the remaining 54% performed as surveillance bronchoscopies on asymptomatic patients. As we have previously reported [11], the microbiological profile of respiratory pathogens identified in BAL obtained from symptomatic patients in our study strongly resembled that of healthcare-associated pneumonia/hospital-acquired pneumonia as well as pneumonia in other immunocompromised states [8,9], dominated by *Staphylococcus aureus*, *Pseudomonas aeruginosa*, and other non-fermenting gram negative rods. Each BAL specimen was divided into two equal aliquots, and eukaryotic cells were removed from one aliquot ('acellular BAL') by short, low-speed centrifugation. Both acellular and whole BAL aliquots were then centrifuged at high speed for 30 min to pellet the bacteria in the sample for DNA preparation, V3-V5 16S rRNA gene amplicon library generation, and 454 pyrosequencing and subsequent bioinformatics, as outlined in the 'Methods' section.

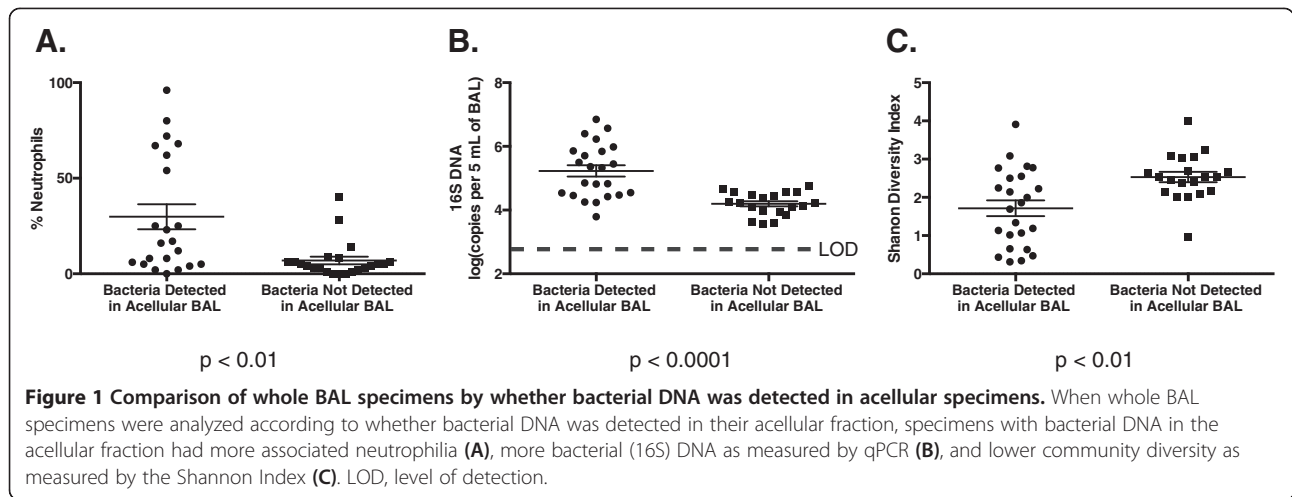
Bacterial communities were detected in 96% of whole BAL aliquots, while only 52% of acellular BAL aliquots contained detectable bacteria via pyrosequencing ($p \leq 0.0001$) (as assessed by the presence or absence of bands corresponding to the 16S rRNA gene after the amplification step of our pyrosequencing protocol). Given this marked difference, we compared BAL specimens based on whether their acellular aliquots contained detectable bacterial signal (Figure 1). Anticipating that total bacterial

burden would be an important factor, we confirmed that samples with detectable bacteria in acellular BAL had higher bacterial (16S) DNA burden as measured by quantitative polymerase chain reaction (qPCR) of the whole BAL ($p < 0.0001$). Consistent with this, the same BAL specimens had higher BAL neutrophilia ($p < 0.01$) and lower whole BAL community diversity ($p < 0.01$), indicating that the presence of detectable bacteria in acellular BAL is associated with indices of acute infection.

To compare the bacterial community membership of BAL specimens based on whether they had bacteria detectable in acellular BAL, we used the data visualization technique of unconstrained ordination, with whole BAL aliquots labeled according to whether bacteria were detectable in their corresponding acellular aliquots (Figure 2). This demonstrated a spatial separation of BAL specimens based on the presence of bacteria in their acellular aliquot, implying collective differences in the microbiota. This difference was confirmed as statistically significant using multiple methods of hypothesis testing [constrained ordination (redundancy analysis, RDA) and PERMANOVA (*adonis*), $p < 0.05$ both], even when controlled for total bacterial (16S) DNA ($p < 0.05$ both). These multiple analyses confirmed that the detection of bacteria in acellular specimens is independently influenced by bacterial community membership, not merely by total bacterial (16S) DNA.

To better define the influence of community membership on detection of bacteria in the acellular BAL aliquot, we directly compared the relative abundance of the dominant taxa identified in whole BAL communities for each group. Figure 3 demonstrates the relative abundance of the most abundant operational taxonomic units (OTUs) detected in the specimens, ranked in descending order of mean abundance in specimens for which bacteria were detected in both whole and acellular BAL. Some prominent taxa associated with classic respiratory pathogens (*P. aeruginosa*, *Staphylococcus* sp.) were markedly less abundant in the specimens with undetectable bacteria in the acellular BAL aliquot. Other prominent taxa (*Prevotella* sp., *Pseudomonas fluorescens*, *Escherichia* sp.) had comparable or increased abundance in these same specimens. By direct comparison of group means, specimens with no bacteria detectable in their acellular BAL aliquot had significantly less *P. aeruginosa* and more *P. fluorescens* and *Escherichia* sp. ($p < 0.05$ for all). This further suggested that specific taxonomic groups are lost from BAL with the removal of eukaryotic cells.

In order to systematically identify and quantify the effects of factors on the detection of bacteria in acellular BAL, we performed univariate and multivariable logistic regression using host factors and whole BAL pyrosequencing results as predictors and detection of bacteria in acellular BAL as the outcome (Table 1). We again

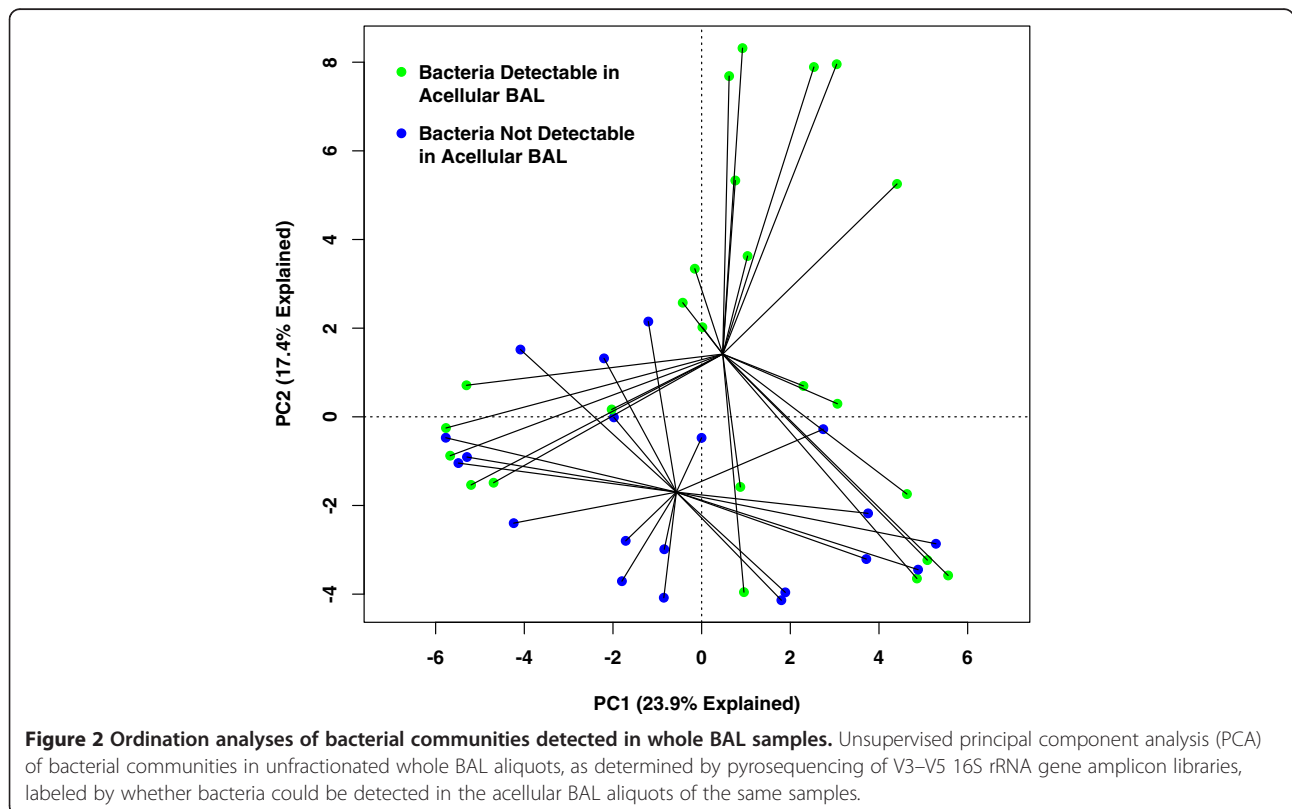


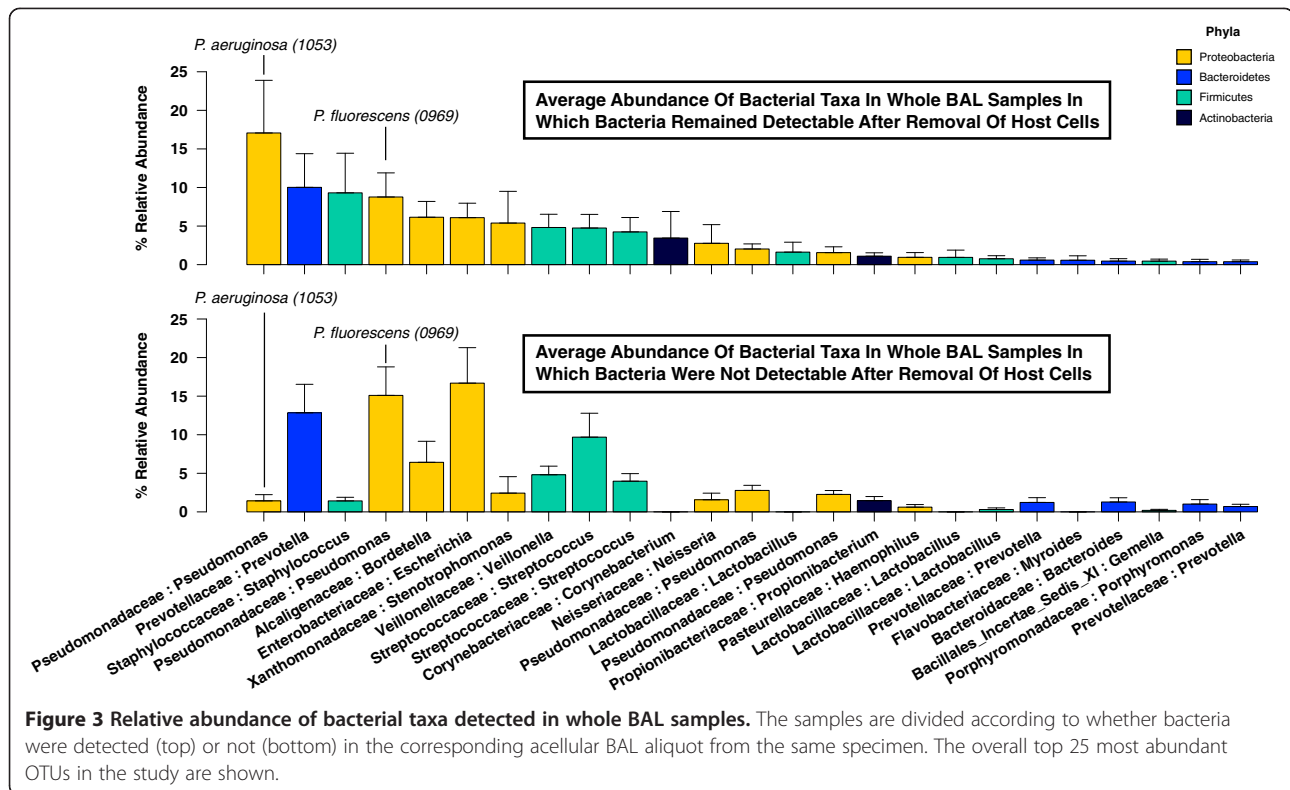
found that the detection of bacteria in acellular BAL by pyrosequencing was positively associated with indices of acute infection [total bacterial (16S) DNA, BAL neutrophilia and low community diversity ($p < 0.01$)]. Detection of bacteria in acellular BAL was negatively associated with relative abundance of the *Enterobacteriaceae* family ($p < 0.05$) and the OTU classified as *Escherichia* sp. (1087) ($p < 0.05$). Both of these taxonomic associations remained significant even when controlled via multivariable logistic regression for total bacterial (16S) DNA. Thus, detection of bacteria

in acellular BAL aliquots was strongly associated with evidence of acute infection but also independently and negatively associated with relative abundance of specific prominent taxonomic groups, implying cell association of these types of microbes.

Influence of eukaryotic cell removal on BAL bacterial communities

To determine the direct effect of host cell removal on detecting bacterial communities, we then focused on the





24 BAL specimens for which bacteria were detected in both whole and acellular aliquots. Twelve (50%) of these BAL specimens were acquired from symptomatic subjects; the remainder (12, 50%) were acquired from asymptomatic subjects. Similar numbers of high-quality pyrosequencing reads were obtained from both whole and acellular aliquots ($1,633 \pm 650$ and $2,013 \pm 1,287$ reads per specimen, respectively, $p > 0.05$), but more unique OTUs were collectively detected among whole BAL aliquots (590 vs 267). Rarefaction analysis confirmed that lower OTU richness was decreased among acellular BAL aliquots when compared to whole BAL aliquots (Figure 4, $p < 0.05$). These results imply that specific bacterial species are lost from BAL specimens with removal of eukaryotic cells; the remaining OTUs may identify organisms that are dispersed or free-living within the respiratory tract.

In order to compare the community membership of whole and acellular BAL aliquots from the same subjects, we again employed unconstrained ordination for data visualization (PCA, Figure 5A). We did not detect a clear and uniform spatial separation of whole and acellular BAL aliquots; centroids of each group were close in proximity (Figure 5B), suggesting similar collective microbiota, and the two specimen groups were not statistically distinct when tested either via PERMANOVA (adonis) or constrained ordination (RDA) ($p < 0.05$ for both). Nevertheless, when examining the ordination

distance separating the paired whole and acellular BAL communities derived from the same original BAL specimen, a marked heterogeneity between individual subjects was observed (Figure 5C). For some clusters of samples, whole BAL communities were similar to their acellular BAL counterparts (Figure 5C, regions X and Y). In other regions of ordination space, the whole and acellular BAL aliquots were consistently different from each other (Figure 5C, region Z). Using biplot analysis (Figure 5D), we determined that these regions were associated with specific OTUs. For instance, regions X and Y, in which the whole and acellular BAL communities of individual subjects were in close proximity to each other, were respectively associated with *P. aeruginosa* (1053) and *Staphylococcus* sp. (1098). By contrast, region Z, in which whole BAL communities were markedly dissimilar from their acellular BAL counterparts, was associated with *P. fluorescens* (0969) and *Escherichia* sp. (1087). Hence, the similarity of subjects' whole BAL pyrosequencing and acellular BAL pyrosequencing was related to community membership.

To quantify and better characterize this observation, we calculated a dissimilarity metric (the Bray-Curtis distance, calculated using a Hellinger-transformed data matrix) comparing each specimen's whole and acellular BAL bacterial communities. We then performed linear regression to test for associations between host and community factors and community dissimilarity (Table 2). The

Table 1 Univariable logistic regression of predictors of bacterial identification

	Predictors	Outcome: bacteria identified in acellular BAL via pyrosequencing	
		<i>p</i> value	Odds ratio
BAL features	Bacterial (16S) DNA (log)	<i>0.004</i>	26.93 (4.58–476.29)
	% Neutrophils	<i>0.027</i>	1.06 (1.02–1.14)
	% Lymphocytes	0.318	0.97 (0.91–1.02)
Antibiotics	Antibiotics (prior 30 days)	0.091	3.00 (0.86–11.29)
	Antibiotics (prior 7 days)	0.111	2.76 (0.81–10.14)
	Antibiotics (at time of BAL)	0.425	1.67 (0.48–6.10)
Diversity	Shannon Index	<i>0.009</i>	<i>0.31 (0.11–0.67)</i>
Phylum (% relative abundance)	Bacteroidetes	0.349	0.99 (0.95–1.02)
	Proteobacteria	0.933	1.00 (0.98–1.02)
	Firmicutes	0.601	1.01 (0.98–1.03)
Family (% relative abundance)	<i>Enterobacteriaceae</i>	<i>0.034</i>	<i>0.93 (0.86–0.99)</i>
	<i>Prevotellaceae</i>	0.494	0.99 (0.96–1.02)
	<i>Pseudomonadaceae</i>	0.367	1.01 (0.99–1.03)
	<i>Staphylococcaceae</i>	0.450	1.08 (0.99–1.39)
	<i>Streptococcaceae</i>	0.307	0.98 (0.93–1.02)
	<i>Veillonellaceae</i>	0.933	1.00 (0.91–1.09)
OTU (% relative abundance)	OTU 0969 (<i>P. fluorescens</i>)	0.194	0.97 (0.94–1.01)
	OTU 1053 (<i>P. aeruginosa</i>)	0.168	1.04 (1.00–1.19)
	OTU 1054 (<i>Bordetella</i>)	0.932	1.00 (0.94–1.06)
	OTU 1072 (<i>Streptococcus</i>)	0.172	0.96 (0.90–1.01)
	OTU 1077 (<i>Veillonella</i>)	0.999	1.00 (0.92–1.09)
	OTU 1087 (<i>Escherichia</i>)	<i>0.035</i>	<i>0.93 (0.87–0.99)</i>
	OTU 1095 (<i>Prevotella</i>)	0.625	0.99 (0.96–1.02)
	OTU 1098 (<i>Staphylococcus</i>)	0.442	1.07 (0.99–1.34)

Italicized results: $p < 0.05$.

dissimilarity between whole and acellular BAL aliquots was negatively associated with total bacterial (16S) DNA ($p < 0.0001$), BAL neutrophilia ($p = 0.01$) and low community diversity ($p < 0.0001$), indicating that the aliquots tend to be similar in the context of acute infection. By contrast, dissimilarity between whole and acellular BAL aliquots was positively associated with relative abundance of the *Enterobacteriaceae* family ($p < 0.001$) and OTUs classified as a non-aeruginosa *Pseudomonas* sp. (0969) ($p < 0.001$) and *Escherichia* sp. (1087) ($p = 0.001$).

Given these results suggesting community membership-associated differences between whole and acellular BAL, we performed direct comparisons of the relative abundance of prominent taxonomic groups in paired whole and acellular BAL aliquots. We found marked differences in select (but not all) taxonomic groups. Acellular BAL samples contained significantly less *Prevotellaceae* family members ($p < 0.05$, Figure 6A) and *P. fluorescens* ($p = 0.02$, Figure 6B) than their whole BAL counterparts. Prominent taxa considered classic respiratory pathogens (*P. aeruginosa*, *Staphylococcus* sp., *Stenotrophomonas*

sp.) had comparable relative abundance in paired whole and acellular specimens ($p > 0.05$). These data provide direct evidence that removal of eukaryotic cells alters the detection of microbial community composition in a taxonomically biased fashion, suggesting concomitant removal of cell-associated bacteria by this process.

Discussion

Using a culture-independent technique of bacterial identification and multiple complementary analytic approaches, we found that the removal of host cells from BAL fluid both decreases its total bacterial content and also selectively alters its community composition, implying that specific bacterial community members are cell-associated. These novel findings have implications in the important biological question of localizing the lung microbiome, as well as in the study design of subsequent investigations and interpretation of existing literature of this relatively young field.

Via multiple analyses, we demonstrated that eukaryotic cell removal decreased the bacterial content of BAL fluid.

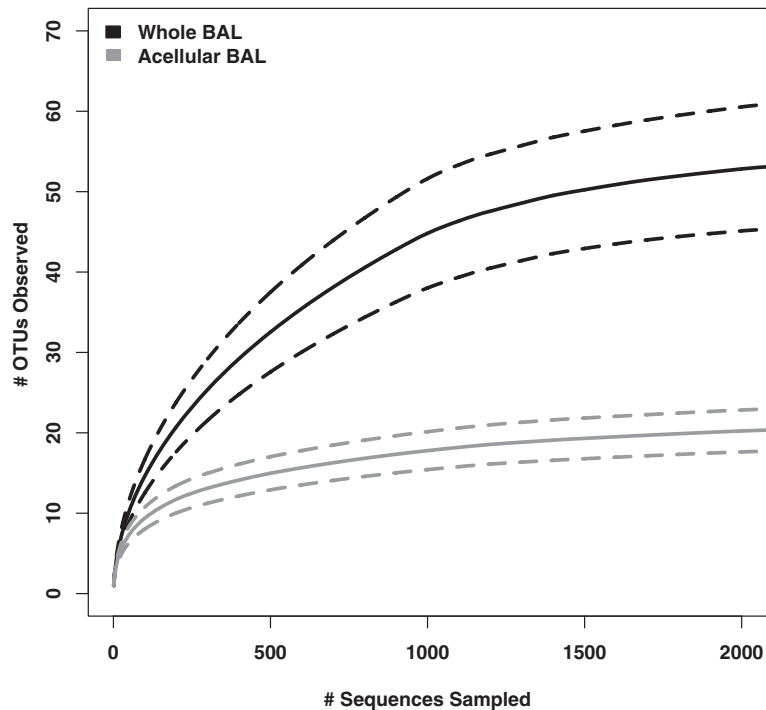


Figure 4 Rarefaction curves for whole BAL and acellular BAL pyrosequencing results. Rarefaction analysis was performed on whole BAL and acellular BAL aliquots obtained from the same BAL specimen. Dotted lines indicated 95% confidence intervals.

The detection of bacterial communities via pyrosequencing was reduced by roughly half when acellular BAL was used. When whole and acellular BAL samples were directly compared, fewer unique OTUs were detected in acellular samples despite comparable numbers of high-quality reads, and rarefaction analysis confirmed a drop in taxonomic richness. Our analyses identified two important and distinct factors influencing loss of bacteria with host cell removal: the presence of acute infection [evidenced by high bacterial (16S) DNA burden, BAL neutrophilia and low community diversity] and, independently, relative abundance of specific prominent members of the lung microbiome. The association with infection may be attributable simply to an increased overall bacterial burden surviving the host-cell removal step of BAL processing but may also reflect the important transition from biofilm association to dispersed and free-living phenotype central to bacterial pathogenesis [5]. Separately, the association between abundance of specific taxa and loss of bacteria with host cell removal illustrates that the removal of eukaryotic cells did not uniformly decrease bacterial community membership, but instead removed bacteria in a taxonomically biased fashion.

This observation that eukaryotic cell removal selectively influences the composition of BAL bacterial communities was confirmed by direct comparison of whole and acellular BAL aliquots from the same bronchoscopy. Multiple complementary analyses—unconstrained and constrained

ordination, linear regression using a community dissimilarity metric, and paired relative abundance comparison—all indicated that relative abundance of specific taxa (*Prevotella* spp., *P. fluorescens*, *Escherichia* sp.) is selectively decreased following eukaryotic cell removal. Several plausible biological explanations exist for this observation: these cell-associated bacteria may be intracellular (e.g., engulfed in alveolar macrophages), enmeshed in biofilms (all three of these taxa contain known biofilm producers) [12-14], or attached to eukaryotic cells via cell-adhesion appendages (all three taxa contain members with known means of attaching to or invading host epithelial cells [12,15,16]). Microbe localization techniques such as fluorescence *in situ* hybridization, electron microscopy, and biofilm-specific gene expression analysis may elucidate which of these conjectures are correct.

Our findings have important implications both in subsequent study design and in interpretation of the existing lung microbiome literature. While most studies to date have utilized whole BAL [1], some have utilized acellular BAL [6,7]. Our findings indicate that this methodological difference may have important effects on interpretation of BAL microbiota, especially in non-infected patients, and should be a consideration in the design of future studies. We demonstrated that in conditions of acute infection [BAL neutrophilia, high bacterial (16S) DNA burden, low community diversity], pyrosequencing of acellular BAL accurately and reliably reflects

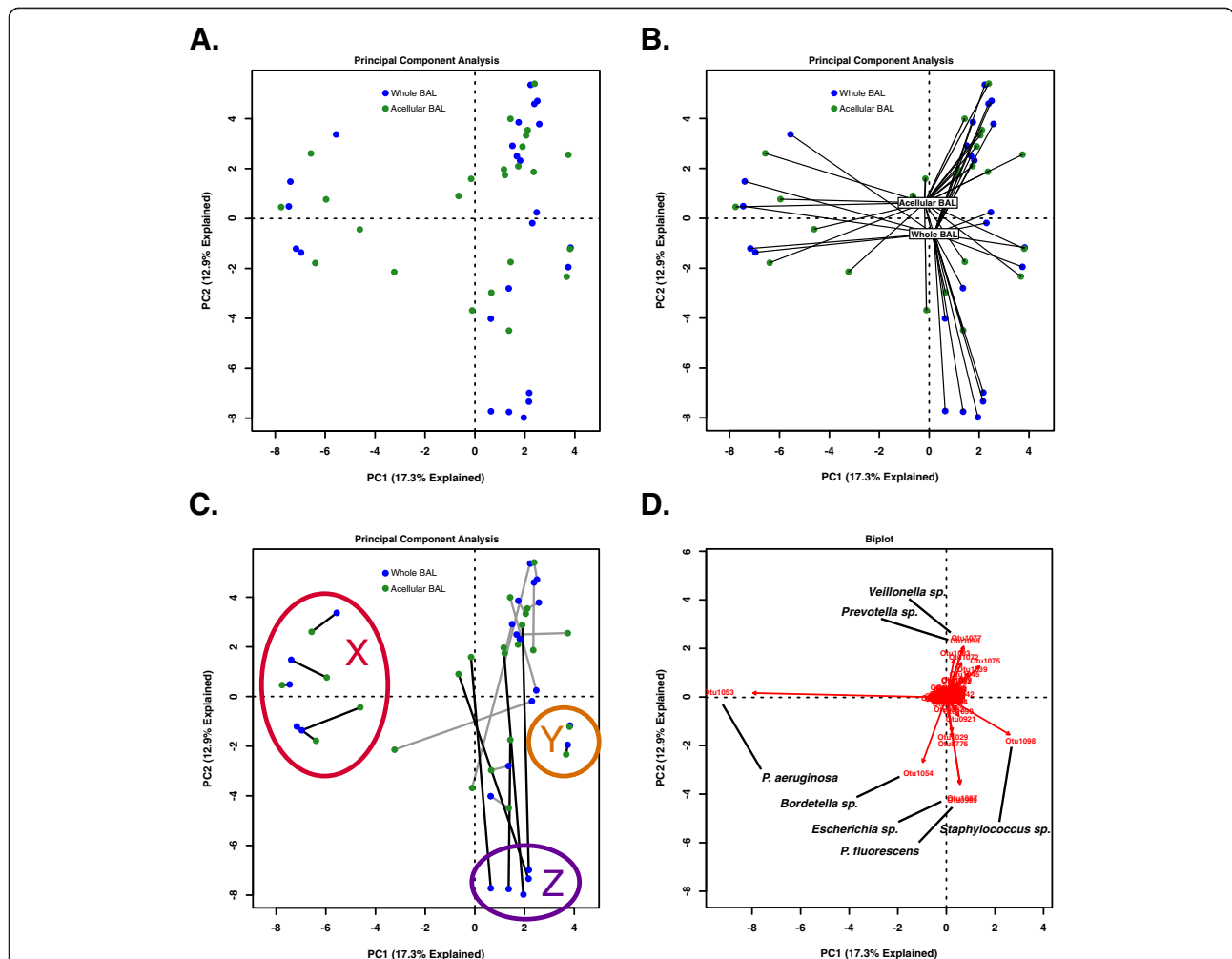


Figure 5 Ordination of bacterial communities in whole and acellular BAL aliquots from the same BAL sample. Unsupervised principal component analysis (PCA) labeled as **(A)** sample groups [whole BAL aliquots (blue) and acellular BAL aliquots (green)]; **(B)** sample groups with centroids added; **(C)** sample groups with corresponding whole and acellular BAL aliquots connected via lines. X and Y (red and yellow circles, respectively) are regions with close proximity of corresponding whole and acellular BAL aliquots; region Z (purple circle) contains whole BAL aliquots far removed from their acellular BAL counterparts. (See text.) **(D)** Biplot analysis of PCA plot with prominent OTUs labeled.

the composition of bacterial communities detected in whole BAL. Yet in other contexts, investigators utilizing acellular BAL should be mindful of the important consequences of host cell removal on bacterial community composition.

Our methodological approach has several caveats. The removal of eukaryotic cells via centrifugation is likely imperfect, and it is possible that the marked differences we found between whole and acellular BAL would be affected by variation in eukaryotic cell extraction technique. Second, our BAL specimens were all obtained from lung transplant recipients and thus are likely not completely representative of BAL acquired from healthy volunteers or of patients in other disease states. However, the microbiological profile of respiratory pathogens among transplant recipients does strongly resemble that

in healthcare-associated pneumonia and pneumonia in other immunocompromised states [8,9], two of the most common indications for bronchoalveolar lavage [17].

Conclusions

We present a novel methodological and analytical approach to the localization of lung microbiota and show that prominent members of the lung microbiome are cell-associated, potentially via biofilms, cell adhesion, or intracellularly.

Methods

Ethics statement

All clinical investigations were conducted according to the principles of the Declaration of Helsinki. The study protocol was approved by the institutional review

Table 2 Linear regression—BAL features and Bray-Curtis dissimilarity between paired whole and acellular BAL bacterial communities

	<i>R</i> ²	Slope	<i>p</i> value
Bacterial (16S) DNA	0.5518	-0.3189	< 0.0001
Shannon Diversity Index	0.4563	0.2406	0.0003
% Neutrophils	0.2879	-0.006195	0.01
Phylum: Bacteroidetes	0.154	0.006365	0.0579
Phylum: Proteobacteria	0.001186	-0.0003186	0.8731
Phylum: Firmicutes	0.0286	-0.001962	0.4295
Family: <i>Enterobacteriaceae</i>	0.4015	0.3706	0.0009
Family: <i>Prevotellaceae</i>	0.09077	0.004868	0.1525
Family: <i>Pseudomonadaceae</i>	0.0003322	0.0001943	0.9326
Family: <i>Staphylococcaceae</i>	0.1588	-0.005681	0.0538
Family: <i>Streptococcaceae</i>	0.03284	0.005290	0.3968
Family: <i>Veillonellaceae</i>	0.02873	0.007565	0.4285
OTU 0969: <i>P. fluorescens</i>	0.4117	0.01502	0.0007
OTU 1053: <i>P. aeruginosa</i>	0.1441	-0.004070	0.0673
OTU 1054: <i>Bordetella</i> sp.	0.007573	0.003108	0.686
OTU 1072: <i>Streptococcus</i> sp.	0.06459	0.01053	0.2308
OTU 1077: <i>Veillonella</i> sp.	0.02592	0.006867	0.4523
OTU 1087: <i>Escherichia</i> sp.	0.3979	0.02464	0.001
OTU 1095: <i>Prevotella</i> sp.	0.0658	0.004300	0.2263
OTU 1098: <i>Staphylococcus</i> sp.	0.1575	-0.005654	0.0549

Italicized results: *p* < 0.05.

board of the University of Michigan Healthcare System (HUM00042443). All patients provided written informed consent.

Study population

BAL samples were obtained consecutively from lung transplant recipients undergoing bronchoscopy at the

University of Michigan between 1 November 2011 and 1 August 2012. Clinical data were abstracted from the electronic medical record. We enrolled 33 subjects and performed 46 bronchoscopies, 21 (45.6%) for an acute clinical indication (dyspnea, cough, radiographic infiltrate, or decline in lung function) and the remainder as surveillance bronchoscopies performed on asymptomatic patients. Details of immunosuppression, antibiotic exposure, and comparison of symptomatic and asymptomatic subjects have been previously reported [11]. Compared to asymptomatic subjects, symptomatic subjects had comparable total bacterial (16S) DNA and community diversity but distinct community membership.

Sample acquisition and processing

The bronchoscope was advanced via the mouth or nose and through the vocal cords. After a brief airway exam, the bronchoscope was wedged in the right middle lobe or lingula of the allograft (for surveillance bronchoscopies) or, in the case of symptomatic patients with available imaging, in the segment with the most evidence of radiographic abnormality. BAL was performed with instillation of between 120 and 300 ml of sterile isotonic saline. BAL cell and differential count was performed on pooled BAL fluid via hemocytometry by the University of Michigan Clinical Laboratory. All BALs were stored on ice until processing.

Eukaryotic cell removal

BAL specimens were fractionated into two aliquots. One aliquot (acellular BAL) was centrifuged at 300 rpm (11 × *g*) for 10 min; the resulting supernatant was collected. This acellular supernatant and the other aliquot (whole BAL) were centrifuged at 13,000 revolutions per minute (rpm) (22,500 × *g*) for 30 min (Hermle Z 231 M microcentrifuge; Hermle Labortechnik GmbH, Wehingen, Germany) in

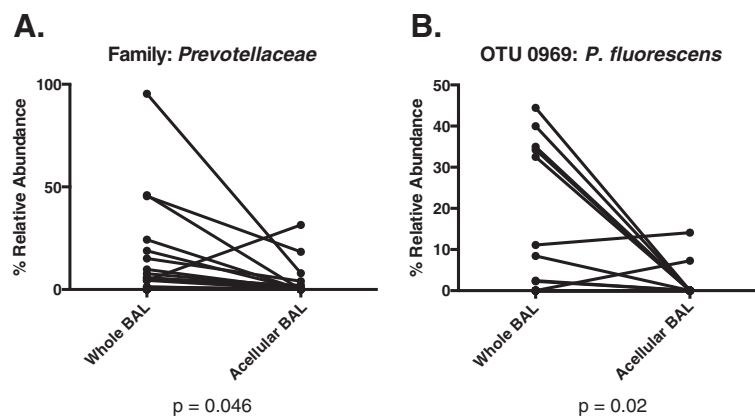


Figure 6 Use of acellular BAL biases detection of microbial community composition via pyrosequencing. Relative abundance of prominent lung microbes in paired whole and acellular BAL aliquots from the same BAL specimen: (A) *Prevotellaceae* spp. and (B) OTU 0969 (*P. fluorescens*).

dolphin-nosed Eppendorf tubes and the pellets for each stored at -80°C until the time of DNA extraction.

DNA isolation, quantitative polymerase chain reaction, and 454 pyrosequencing

Genomic DNA was extracted from BAL pellets, resuspended in 360 μl ATL buffer (Qiagen DNeasy Blood & Tissue kit; Qiagen, Venlo, Limburg, the Netherlands) and homogenized in UltraClean fecal DNA bead tubes (MO-BIO, Carlsbad, CA, USA) using a modified protocol previously demonstrated to isolate bacterial DNA [18]. Quantification of bacterial 16S rDNA was performed on whole BAL specimens by real-time polymerase chain reaction (PCR) utilizing TaqMan hydrolysis probes on a Roche 480 LightCycler (Roche Diagnostics GmbH, Mannheim, Germany), as described previously [11,19-21]. Amplicon libraries were generated as previously described [11] and sequenced using a Roche 454 GS Junior according to established protocols [22]. The V3–V5 hypervariable regions of the bacterial 16S rRNA gene were sequenced in the V5–V3 direction using barcoded primer sets corresponding to 357 F and 926R [11]. Pre-procedure bronchoscopy rinse controls, reagent water controls, and mock community standards were sequenced and analyzed as quality controls. The data set supporting the results of this article has been posted to the NIH Sequence Read Archive (SRA:SRP041659).

Data analysis

Sequence data were processed and analyzed using the software mothur v.1.27.0 according to the Standard Operating Procedure for 454 sequence data (<http://www.mothur.org>) using a minimum sequence length of 250 base pairs [23]. A shared community file and a phylotyped (genus-level grouping) file were generated using OTUs binned at 97% identity. OTUs detected in reagent water controls were removed from all BAL specimens prior to analysis. OTU numbers were arbitrarily assigned in the binning process and are referred to throughout the manuscript in association with their most specified level of taxonomy. Classification of OTUs was carried out using the mothur implementation of the Ribosomal Database Project (RDP) Classifier and the RDP taxonomy training set (<http://rdp.cme.msu.edu>). Using multiple complementary techniques (culture, microbe-specific PCR, NCBI BLAST, phylogenetic tree generation), we have previously identified two prominent *Pseudomonas*-classified OTUs in this dataset as *P. aeruginosa* (0153) and *P. fluorescens* (0969) [11]. Comparison of group proportions was performed using Fisher's exact test. Odds ratios were determined using univariable and multivariable logistic regression in *R* [24]. Group means were compared using Student's *t* test. Ordination and PERMANOVA (adonis) testing was

performed using the vegan package 2.0-4 in *R* [24,25]. All analyses were performed in *R* and GraphPad Prism 6.

Abbreviations

ATP: adenosine triphosphate; BAL: bronchoalveolar lavage; DNA: deoxyribonucleic acid; OTU: operational taxonomic units; PCA: principal components analysis; PCR: polymerase chain reaction; RDA: redundancy analysis; RDP: Ribosomal Database Project; rpm: revolutions per minute; rRNA: ribosomal ribonucleic acid.

Competing interests

The authors declare that they have no competing interests.

Authors' contributions

RPD conceived of the study design, participated in data acquisition, executed the analysis and drafted and revised the manuscript. JRE participated in study design, data acquisition and bioinformatic analysis and revised the manuscript. HCP participated in statistical analysis and revised the manuscript. FJM participated in data acquisition, interpreted the data and revised the manuscript. JLC interpreted the data and revised the manuscript. VNL participated in study design and data acquisition, interpreted the data and revised the manuscript. GBH participated in study design, data acquisition, bioinformatic analysis and manuscript revision. All authors read and approved this version of the manuscript.

Acknowledgements

The authors thank Natalie Walker, Zachary Britt, Nicole Falkowski, Dayana Rojas and Brittan Scales for assistance in tissue processing. The authors thank Rick Bushman and his lab at the University of Pennsylvania for providing the 16S qPCR protocol.

Funding provided by NIH grants T32HL00774921 (RPD, HCP), U01HL098961 (JLC, GBH), R01HL094622 (VNL), R01HL114447 (GBH, FJM), and the Biomedical Laboratory and Clinical Science Research & Development Services, Department of Veterans Affairs (JLC). Support provided by the Host Microbiome Initiative of the University of Michigan.

Author details

¹Division of Pulmonary and Critical Care Medicine, Department of Internal Medicine, University of Michigan Medical School, Ann Arbor, MI 48109, USA.

²Pulmonary and Critical Care Medicine Section, Medical Service, VA Ann Arbor Healthcare System, Ann Arbor, MI 48105, USA. ³Department of Microbiology and Immunology, University of Michigan Medical School, Ann Arbor, MI 48109, USA.

Received: 28 April 2014 Accepted: 26 June 2014

Published: 18 August 2014

References

1. Dickson RP, Erb-Downward JR, Huffnagle GB: **The role of the bacterial microbiome in lung disease.** *Expert Rev Respir Med* 2013, **7**:245–257.
2. Erb-Downward JR, Thompson DL, Han MK, Freeman CM, McCloskey L, Schmidt LA, Young VB, Toews GB, Curtis JL, Sundaram B, Martinez FJ, Huffnagle GB: **Analysis of the lung microbiome in the "healthy" smoker and in COPD.** *PLoS One* 2011, **6**:e16384.
3. Hilty M, Burke C, Pedro H, Cardenas P, Bush A, Bossley C, Davies J, Ervine A, Poulter L, Pachter L, Moffatt MF, Cookson WO: **Disordered microbial communities in asthmatic airways.** *PLoS One* 2010, **5**:e8578.
4. Morris A, Beck JM, Schloss PD, Campbell TB, Crothers K, Curtis JL, Flores SC, Fontenot AP, Ghedin E, Huang L, Jablonski K, Kleerup E, Lynch SV, Sodergren E, Twigg H, Young VB, Bassis CM, Venkataraman A, Schmidt TM, Weinstock GM: **Comparison of the respiratory microbiome in healthy nonsmokers and smokers.** *Am J Respir Crit Care Med* 2013, **187**:1067–1075.
5. Marks LR, Davidson BA, Knight PR, Hakansson AP: **Interkingdom signaling induces *Streptococcus pneumoniae* biofilm dispersion and transition from asymptomatic colonization to disease.** *MBio* 2013, **4**, doi:10.1128/mBio.00438-13.
6. Lozupone C, Cota-Gomez A, Palmer BE, Linderman DJ, Charlson ES, Sodergren E, Mitreva M, Abubucker S, Martin J, Yao G, Campbell TB, Flores SC, Ackerman G, Stombaugh J, Ursell L, Beck JM, Curtis JL, Young VB, Lynch SV, Huang L, Weinstock GM, Knox KS, Twigg H, Morris A, Ghedin E, Bushman FD, Collman RG, Knight R, Fontenot AP: **Widespread colonization of the**

- lung by *Tropheryma whipplei* in HIV infection. *Am J Respir Crit Care Med* 2013, **187**:1110–1117.
7. Segal LN, Alekseyenko AV, Clemente JC, Kulkarni R, Wu B, Chen H, Berger KI, Goldring RM, Rom WN, Blaser MJ, Weiden MD: **Enrichment of lung microbiome with supraglottic taxa is associated with increased pulmonary inflammation.** *Microbiome* 2013, **1**:19.
 8. Aguilar-Guisado M, Givalda J, Ussetti P, Ramos A, Morales P, Blanes M, Bou G, de la Torre-Cisneros J, Roman A, Borro JM, Lama R, Cisneros JM: **Pneumonia after lung transplantation in the RESITRA Cohort: a multicenter prospective study.** *Am J Transplant* 2007, **7**:1989–1996.
 9. Chan CC, Abi-Saleh WJ, Arroliga AC, Stillwell PC, Kirby TJ, Gordon SM, Petras RE, Mehta AC: **Diagnostic yield and therapeutic impact of flexible bronchoscopy in lung transplant recipients.** *J Heart Lung Transplant* 1996, **15**:196–205.
 10. Society AT: **Guidelines for the management of adults with hospital-acquired, ventilator-associated, and healthcare-associated pneumonia.** *Am J Respir Crit Care Med* 2005, **171**:388–416.
 11. Dickson RP, Erb-Downward JR, Freeman CM, Walker N, Scales BS, Beck JM, Martinez FJ, Curtis JL, Lama VN, Huffnagle GB: **Changes in the lung microbiome following lung transplantation include the emergence of two distinct *Pseudomonas* species with distinct clinical associations.** *PLoS One* 2014, **9**:e97214.
 12. Pratt LA, Kolter R: **Genetic analysis of *Escherichia coli* biofilm formation: roles of flagella, motility, chemotaxis and type I pili.** *Mol Microbiol* 1998, **30**:285–293.
 13. Vandecastelaere I, Matthijs N, Van Nieuwerburgh F, Deforce D, Vosters P, De Bus L, Nelis HJ, Depuydt P, Coenye T: **Assessment of microbial diversity in biofilms recovered from endotracheal tubes using culture dependent and independent approaches.** *PLoS One* 2012, **7**:e38401.
 14. O'Toole GA, Kolter R: **Initiation of biofilm formation in *Pseudomonas fluorescens* WCS365 proceeds via multiple, convergent signalling pathways: a genetic analysis.** *Mol Microbiol* 1998, **28**:449–461.
 15. Dorn BR, Leung K-P, Progulsk-Fox A: **Invasion of human oral epithelial cells by *Prevotella intermedia*.** *Infect Immun* 1998, **66**:6054–6057.
 16. Madi A, Lakhdari O, Blottière HM, Guyard-Nicodème M, Le Roux K, Groboillot A, Svinareff P, Doré J, Orange N, Feuilloley MG: **The clinical *Pseudomonas fluorescens* MFN1032 strain exerts a cytotoxic effect on epithelial intestinal cells and induces interleukin-8 via the AP-1 signaling pathway.** *BMC Microbiol* 2010, **10**:215.
 17. Wang K-P, Mehta AC, Turner JF Jr: *Flexible Bronchoscopy*. Chichester: Wiley-Blackwell; 2012:74.
 18. Mason KL, Erb Downward JR, Mason KD, Falkowski NR, Eaton KA, Kao JY, Young VB, Huffnagle GB: ***Candida albicans* and bacterial microbiota interactions in the cecum during recolonization following broad-spectrum antibiotic therapy.** *Infect Immun* 2012, **80**:3371–3380.
 19. Charlson ES, Bittinger K, Haas AR, Fitzgerald AS, Frank I, Yadav A, Bushman FD, Collman RG: **Topographical continuity of bacterial populations in the healthy human respiratory tract.** *Am J Respir Crit Care Med* 2011, **184**:957–963.
 20. Hill DA, Hoffmann C, Abt MC, Du Y, Kobuley D, Kim TJ, Bushman FD, Artis D: **Metagenomic analyses reveal antibiotic-induced temporal and spatial changes in intestinal microbiota with associated alterations in immune cell homeostasis.** *Mucosal Immunol* 2009, **3**:148–158.
 21. Wilmotte A, Van der Auwera G, De Wachter R: **Structure of the 16 S ribosomal RNA of the thermophilic cyanobacterium *Chlorogloeopsis HTF* ('*Mastigocladus laminosus* HTF') strain PCC7518, and phylogenetic analysis.** *FEBS Lett* 1993, **317**:96–100.
 22. Daigle D, Simen BB, Pochart P: **High-throughput sequencing of PCR products tagged with universal primers using 454 life sciences systems.** *Curr Protoc Mol Biol* 2011, **Chapter 7**:Unit 7.5. doi:10.1002/0471142727.mb0705s96.
 23. Schloss PD, Westcott SL, Ryabin T, Hall JR, Hartmann M, Hollister EB, Lesniewski RA, Oakley BB, Parks DH, Robinson CJ, Sahl JW, Stres B, Thallinger GG, Van Horn DJ, Weber CF: **Introducing mothur: open-source, platform-independent, community-supported software for describing and comparing microbial communities.** *Appl Environ Microbiol* 2009, **75**:7537–7541.
 24. R Core Team: **R: a language and environment for statistical computing.** Vienna, Austria: R Foundation for Statistical Computing; http://www.R-project.org.
 25. Oksanen JF, Blanchet G, Kindt R, Legendre P, Minchin PR, O'Hara RB, Simpson GL, Solymos P, Stevens MHH, Wagner H: **vegan: Community Ecology Package.** R package version 2.0-4. http://CRAN.R-project.org/package=vegan.

doi:10.1186/2049-2618-2-28

Cite this article as: Dickson *et al.*: Cell-associated bacteria in the human lung microbiome. *Microbiome* 2014 **2**:28.

Submit your next manuscript to BioMed Central and take full advantage of:

- Convenient online submission
- Thorough peer review
- No space constraints or color figure charges
- Immediate publication on acceptance
- Inclusion in PubMed, CAS, Scopus and Google Scholar
- Research which is freely available for redistribution

Submit your manuscript at
www.biomedcentral.com/submit

