



REVIEW

Open Access

Placental contribution to the origins of sexual dimorphism in health and diseases: sex chromosomes and epigenetics

Anne Gabory¹, Tessa J Roseboom^{2,3}, Tom Moore⁴, Lorna G Moore⁵ and Claudine Junien^{1,6*}

Abstract

Sex differences occur in most non-communicable diseases, including metabolic diseases, hypertension, cardiovascular disease, psychiatric and neurological disorders and cancer. In many cases, the susceptibility to these diseases begins early in development. The observed differences between the sexes may result from genetic and hormonal differences and from differences in responses to and interactions with environmental factors, including infection, diet, drugs and stress. The placenta plays a key role in fetal growth and development and, as such, affects the fetal programming underlying subsequent adult health and accounts, in part for the developmental origin of health and disease (DOHaD). There is accumulating evidence to demonstrate the sex-specific relationships between diverse environmental influences on placental functions and the risk of disease later in life. As one of the few tissues easily collectable in humans, this organ may therefore be seen as an ideal system for studying how male and female placenta sense nutritional and other stresses, such as endocrine disruptors. Sex-specific regulatory pathways controlling sexually dimorphic characteristics in the various organs and the consequences of lifelong differences in sex hormone expression largely account for such responses. However, sex-specific changes in epigenetic marks are generated early after fertilization, thus before adrenal and gonad differentiation in the absence of sex hormones and in response to environmental conditions. Given the abundance of X-linked genes involved in placentogenesis, and the early unequal gene expression by the sex chromosomes between males and females, the role of X- and Y-chromosome-linked genes, and especially those involved in the peculiar placenta-specific epigenetics processes, giving rise to the unusual placenta epigenetic landscapes deserve particular attention. However, even with recent developments in this field, we still know little about the mechanisms underlying the early sex-specific epigenetic marks resulting in sex-biased gene expression of pathways and networks. As a critical messenger between the maternal environment and the fetus, the placenta may play a key role not only in buffering environmental effects transmitted by the mother but also in expressing and modulating effects due to preconceptional exposure of both the mother and the father to stressful conditions.

Keywords: Epigenetics, Histone modifications, DNA methylation, Nutrition, DOHaD, Environment, Fetal programming, Sexual dimorphism

* Correspondence: claudine.junien@jouy.inra.fr

¹INRA, UMR1198 Biologie du Développement et Reproduction, F-78352, Jouy-en-Josas, France

⁶UVSQ, Université Versailles Saint-Quentin en Yvelines, Guyancourt, France

Full list of author information is available at the end of the article

Review

Introduction

The recent and rapid worldwide increase in non-communicable diseases (NCDs) challenges the assumption that genetic factors are the primary contributors to such diseases [1]. There is compelling evidence based on numerous clinical observations and on experimental animal studies, that a new dimension, that of the “developmental origins of health and disease” (DOHaD) is at stake and therefore requires a paradigm shift [2]. Such studies are progressively revealing the role of early influences during gestation and lactation and, more recently, even during the preconceptional and childhood as well as adolescence periods on disease risk [3-11]. Exposure to various exogenous or/and endogenous changes during specific windows of developmental programming may affect the long-term health and susceptibility to NCDs of the offspring with a disparity between males and females in the timing of onset and severity of disease outcomes [12-16], often with a long latency [17].

As the interface between mother and fetus, the placenta plays a key role in fetal growth and development and, as such, affects the fetal programming underlying subsequent vulnerability in adulthood. Trophoblasts are the first cell lineage to differentiate during mammalian development. These cells mediate implantation and give rise to most of the extraembryonic tissues [18]. The placenta acquires nutrients and oxygen from the maternal circulation, returns waste products to the maternal circulation and prevents rejection of the semi-allogenic fetus. The placenta is also a major endocrine organ being responsible for synthesizing vast quantities of hormones and cytokines that have important effects on both maternal and fetal physiology [19-22]. As a gateway to the fetus the placenta is affected by numerous environmental factors including nutrient status and tissue oxygenation, which may modify epigenetic marks and gene expression within the placenta and therefore placental development and function [23-25]. Studies of rodents and large animals have shown placental development to be highly adaptable, with many means of compensating for poor nutritional conditions [26-30].

Sex differences in the rate of fetal growth have long been recognized [31]. The sex of the embryo affects the size of both the fetus and the placenta, together with the ability of the placenta to respond to adverse stimuli [27,32,33]. The placenta has traditionally been considered an asexual organ and therefore, many studies focusing on the placenta have not taken the sex of the embryo into account [33]. But given its extraembryonic origin, the placenta has a sex: that of the embryo it belongs to [33-35] and numerous DOHaD studies indicate that sex differences can originate early in development and in particular in the placenta [36]. Studies by

Ishikawa et al. have clearly established an effect of sex chromosome « dosage » on placental size in mice, with XY placentas being significantly larger than XX placentas and that such differences are independent of androgen effects [37]. Although the possession of one X chromosome rather than two leads to an increase in placental size, the underlying mechanism is still to be determined [37].

In mice and cattle, accelerated development is already evident in XY blastocysts; cell division among male embryos occurs more rapidly than in female embryos [38] and, in humans, boys grow more rapidly than girls from the earliest stages of gestation [39]. These differences may start as early as the blastocyst stage in bovines: one third of genes showed sex differences in gene expression [40,41]. Gene expression analysis either for candidate genes or at the genome-wide level show that both the trajectories under basal conditions and those modulating responses differ between the sexes [15]. Analysis of genes involved in amino acid transport and metabolism identified sex differences both in average placental gene expression between male and female and in the relationships between placental gene expression and maternal factors [42]. Ontological analysis of such data suggests a higher global transcriptional level in females and greater protein metabolism levels in males. Specifically global glucose metabolism and pentose-phosphate pathway activity are twice and four times greater in bovine male vs. female blastocysts respectively, with similar metabolic differences being seen for human embryos at the same stages (for review [43]). At birth, placental weights and FPI (fetus-to-placenta weight ratio index, reflecting placental efficiency), tend to be greater in boys than girls [44]. These observations suggest that males may be both more responsive to growth promoting influences, and more susceptible to supply disturbances [44,45].

How could placental sex-specific functions under basal conditions, and sex-specific sensitivity to environmental conditions contribute to the differences in frequency, severity and age at onset of NCDs between the sexes? Unequal gene expression by the sex chromosomes between males and females play an important role even before implantation and the initiation of adrenal and gonad development. The burgeoning field of epigenetics provides credible molecular mechanisms to account for gene expression alterations that may persist in the long term. Owing to complex and programmable epigenetic processes, exposure to adverse environments during critical developmental windows can trigger long lasting influences on the cell's-epigenome [46]. The resulting changes in epigenetic marks may alter cell fate decisions, the ensuing growth and development of tissues and organs, and subsequently be responsible for inadequate responses to later challenges such as an obesogenic environment in a sex-specific manner [15,47,48].

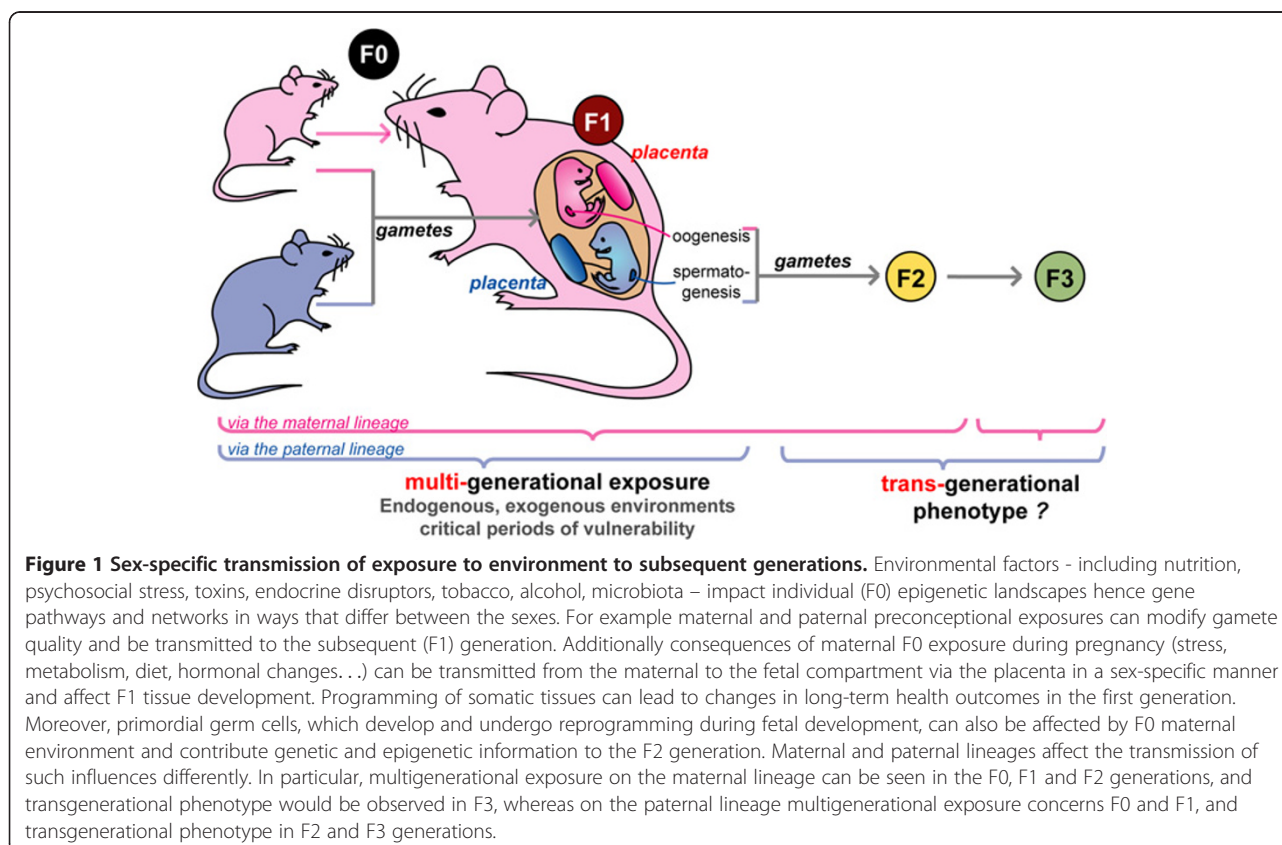
The aim of this review is to discuss the emerging knowledge on the sex-specific relationships between diverse environmental influences on placental functions and the risk of disease later in life. Given the abundance of X-linked genes involved in placentogenesis, and the early unequal gene expression by the sex chromosomes between males and females, this review focusses on the role of X- and Y-chromosome-linked genes, and especially on those involved in the peculiar placenta-specific epigenetics processes, giving rise to the unusual placenta epigenetic landscapes.

Sex-specific outcomes of the effects of placental growth on fetal programming

As a critical messenger between the maternal environment and the fetus, the placenta may play a key role not only in buffering environmental effects transmitted by the mother but also in expressing and modulating effects due to preconceptional exposure of both the mother and the father to stressful conditions. Figure 1 shows how such influences may operate on the transmission of environmental influences to subsequent generation(s), and illustrate the central role of the placenta on the sex-specificity of these parent-of-origin effects. Support for the possibility of inter and transgenerational effects are

also emerging, making it important to know the role played by the placenta and the possible maternal and or paternal epigenetic imprints carried by the gametes forming the zygote. Indeed, maternally or paternally transmitted non-erased epigenetic alterations of key developmental genes may perturb early trophoblast development in a sex-specific manner (Figure 1).

There is evidence to suggest that not only maternal mal- or undernutrition in the context of famines [20,49], maternal overnutrition, gestational diabetes or obesity, maternal stress or depression, but also environmental stressors such as drugs [50] and endocrine disruptors [51] are deleterious to the health of the offspring. Many of these factors have been shown to have the same range of defects and lead to the development of the metabolic syndrome [52-56], or mental health disorders in the offspring [57,58] with striking sex-specificity [15,59-63]. Two common complications of pregnancy, pre-eclampsia and asthma, have provided valuable insight into the way in which the fetoplacental unit influences maternal physiology in a sex-specific manner. There is also growing evidence to suggest that some of these changes depend on the sex of the fetus [60,64,65]. In normal pregnancies, maternal microvascular vasodilatation, which is induced by placental



corticotrophin-releasing hormone, is greater in pregnant women carrying male fetuses than in those carrying female fetuses. In pregnancies complicated by pre-eclampsia, microvascular vasodilatation in women carrying a male fetus is weaker than that in normotensive women carrying a male fetus, whereas no such difference is observed in women carrying female fetuses [64]. The human placenta adapts in a sexually dimorphic manner to chronic maternal asthma. In this situation, female fetal growth is limited, increasing the chances of survival, whereas male fetuses grow normally, this normal growth being associated with a poor outcome in cases of acute asthma exacerbation [33].

How unbalanced parental nutrition perturbs these differences

Placental growth has been shown to respond to maternal influences, including nutrition. There is evidence that the responses are different for the sexes. Studies among babies born around the time of the Dutch famine near the end of the Second World War (1944–1945) have provided insight into the effects of undernutrition on placental size and efficiency in humans, as well as regarding the existence of sex differences in these effects. Maternal undernutrition in early gestation resulted in a smaller placenta with the decrease in placental area being greater for boys than for girls. Famine also impaired placenta development even for pregnancies occurring after the famine had officially ended. Famine in mid to late gestation made the placenta less efficient as indicated by being born lighter than predicted from placental area, but more efficient when the famine occurred in early gestation or for conceptuses conceived after the famine had ended, since such babies were heavier than predicted [20]. In addition to the sexual dimorphism in the acute effects of undernutrition on placental size, the association between placental size and later health also appeared to differ between the sexes. In men, the association between placental size and later hypertension was completely reversed by famine exposure, while the associations were unaltered by famine in women [14].

Consistent with observations in humans, the restriction of placental function alters heart development in sheep fetuses, and small size at birth is associated with more components of metabolic syndrome in adult rams than in adult ewes [66,67]. Experimental and epidemiological studies in humans and animals also demonstrate an association between low or high FPI and impaired glucose tolerance, blood pressure and coronary heart disease [68].

The size and shape of the placenta are predictive of childhood blood pressure. Changes in the placentation process affecting implantation, the expansion of the chorionic surface in mid-gestation or the compensa-

tory expansion of the chorionic surface in late gestation may affect blood pressure responses and the potential development of hypertension later in life. The adverse effects of small placental size may be compounded by those of poor maternal nutrition, whereas the area of the placenta may expand to compensate for fetal undernutrition in better-nourished mothers [69]. Changes in placental structure, activity or physiology may thus contribute to the programming of cardiovascular disease (CVD) in sex-specific ways [22,39,70]. For example hypertension in the male subjects in the Helsinki birth cohort born between 1934 and 1944 was associated with a long minor diameter of the placenta. Growth along this minor axis may be more sensitive to nutritional factors than growth along the major axis [71]. By contrast, hypertension in women was associated with a small placental area at birth, potentially indicating lower levels of nutrient delivery to the fetus. The greater dependence of boys on the diet of their mothers may enable them to make the best use of increases in food supply, but it also leaves them vulnerable to food shortages. This may be reflected in the tendency of men to have higher blood pressure and to die younger than women [72].

The effects of maternal undernutrition on placental growth and development have been studied in detail. However, fewer studies have focused on the potentially deleterious effects of maternal overnutrition or metabolic disturbances on the future health of the offspring, particularly as concerns the development of metabolic syndrome or the combination of obesity, type 2 diabetes (T2D) and CVD [53,73]. The embryo may also react to maternal overnutrition even before the placenta is formed - at the oocyte, zygote or blastocyst stage [74,75]. Moreover there are now convincing data showing that ancestral exposure to an environmental compound modifies the perception and response of the offspring to stress experienced during their own life history. While the effect of fetal sex on placental development and growth are known, there is relatively little known concerning sex differences in the context of overnutrition. Interestingly expression studies, although rare, do show a sex effect [27,61].

The Aberdeen Maternity and Neonatal Databank involving 55,105 pregnancies showed that maternal body mass index was positively associated with placental hypertrophy and birth weight but negatively associated with FPI, suggesting that being overweight or obese was associated with greater placental weight but lower placental efficiency [45]. In humans, placental weight and birth weight are lower in mothers with high carbohydrate intakes in early pregnancy. Low maternal intakes of dairy and meat proteins in late pregnancy are also associated with lower placenta weight and birth weight

[76]. In mice, maternal obesity, T2D and a high-fat diet (HFD) during gestation increase adiposity and modify metabolism and blood pressure in adult offspring fed a control diet (CD), revealing a predisposition to the development of metabolic syndrome [77,78]. These findings suggest that impaired placental development under conditions of maternal overnutrition modifies fetal programming, resulting in impaired responses to diet in adulthood [22,27,71,79,80]. In pregnant mice fed a HFD during gestation, placental weight was higher and placental efficiency (FPI) lower, regardless of the sex of the fetus, without any gross changes in the areas or proportions of the labyrinth and junctional zone layers [81].

There have been few studies of paternal non-genetic effects on the health of the offspring in humans. However, epidemiological studies have suggested that a relationship between maternal grandmother's age and a major autistic trait, or paternal grandfathers access to food and rates of obesity and cardiovascular disease in subsequent generations in a sex-specific manner [82,83]. These aspects have been studied more thoroughly in rodents, in which clear evidence has been obtained for paternal effects on the phenotype and health of the offspring [84]. In particular paternal fasting before mating [85], paternal exposure to a HFD [8] or to a low-protein diet [6], and maternal caloric undernutrition during late gestation [7] all have been shown to alter metabolic function in the offspring. Additionally a human study involving 2947 singletons found a positive association between paternal weight and placental weight [86]. Thus, like maternal exposure, prior paternal exposure may have effects on placenta growth. However, to our knowledge, the effects of prior paternal exposure on placenta growth, size and shape have yet to be investigated, in order to elucidate mechanisms by which paternal influences, not just maternal ones, may be transmitted to the embryo, hence to the placenta.

Parental stress and behavior, neurobiology

Prenatal exposure to maternal stress, depression and pathogenic infections are associated with a higher risk for the development of neurodevelopmental disorders, including schizophrenia and autism [13,87]. Early childhood adversity has also been associated with earlier cancer incidence [11]. Clear differences between the sexes have been found in the programming of emotionality in the offspring and strategies for coping with stress, with the activational effects of testosterone producing females with male-like strategies in tests of passive coping, but with female-like behavior in tests of active coping [46].

Animal models of prenatal stress (psychological, behavioural, nutritional, or metabolic...) have identified major sex- and time-specific effects on the offspring. Maternal stress is associated with the dysregulation of stress pathways, a common feature in most neurodevelopmental

disorders. Stress in early pregnancy has a significant sex-dependent effect on placental gene expression, modifying the fetal transport of key growth factors and nutrients [88]. Synthetic glucocorticoids affect the fetal programming of hypothalamic-pituitary-adrenal axis function and behavior [89]. However, high levels of the 11 β HSD2 enzyme, which converts active glucocorticoids to an inactive metabolite in the placenta, protect the developing fetus from high maternal levels of this hormone [50,90]. Sex-specific differences in the cortisol stress response occur before birth, with much higher levels of cortisol output for male than for female fetuses [91]. Multigenerational programming in glucocorticoid-programmed rats is associated with effects on fetal and placental weight that are generation-specific and dependent on the parent of origin [92].

Recent reports have also highlighted the possibility of paternal transmission of stress-induced conditions, such as social defeat [93] and chronic and unpredictable postnatal maternal separation [94]. Behavioral adaptations that occur after the stress of chronic social defeat can be transmitted from the father to his male and female F1 progeny. The male offspring of defeated fathers also display increased baseline plasma levels of corticosterone and decreased levels of vascular endothelial growth factor [93]. Chronic and unpredictable postnatal maternal separation leads to perturbations in social abilities and serotonergic functions as well as traumatic experiences in early life [87]. The profile of DNA methylation is altered in the promoter region of several candidate genes in the germline of the separated males. Comparable changes in DNA methylation are also present in the brain of the offspring and are associated with altered gene expression [94]. This highlights the negative impact of early paternal stress on behavioral responses across generations and on the regulation of DNA methylation in the germline. However neither of these studies analyzed the effects on placentas of the subsequent generation(s).

Early life exposures to environmental toxicants, endocrine disruptors

In-utero and early-life exposures to environmental toxicants, ranging from heavy metals to endocrine-disrupting chemicals, affect adult metabolism, immune system function, neurodevelopment, and reproductive function. It is now evident that early-life exposures during the prenatal/fetal and postnatal period increase the risk for developing cardiovascular disease, diabetes, obesity, stroke, renal disease, osteoporosis, Alzheimer's disease, and cancer [95]. For example chemical factors can behave as endocrine disruptors and as such perturb the developing endocrine and reproductive systems in a sex specific manner, either directly on

somatic tissues of the exposed individual(s) and/or on their germline with the possibility of being transmitted to the next generation(s) through epigenetic mechanisms (Figure 1). Sex-specificity may also be generation-specific [92,96]. Thus disease susceptibility may reflect developmental exposures rather than simply exposure at or near the time of disease detection. Many of these compounds are lipid soluble and can accumulate in adipose tissue, with the possibility of being transferred across the placenta and fetal blood brain barrier. A number of studies in humans and rodents have demonstrated that gestational/perinatal exposure to either bisphenol A (BPA) or a common organophosphate pesticide interferes with several endocrine pathways and abrogates sexual dimorphism or shows altered sex differences in brain structure, or in heart respectively [97,98]. However while several studies considered the effects as a clear consequence of the transplacental deposition (reviewed in [99]), only one, to our knowledge, has examined the effects on placental gene expression, showing that BPA can alter miRNA expression in placental cells [100]. Thus investigating the effects of these compounds both on sexually dimorphic placental functions and on later health is of great interest.

Mechanisms of unequal expression of X- and Y-chromosome-linked genes

Sex differences: sex hormones and/or sex chromosomes?

Increasing numbers of reports are challenging the traditional view regarding the influences of gonadal hormones and highlighting the potential roles for sex chromosomes (reviewed in [15,60,101,102]). Data from spotted hyena showed that the reduced expression of placenta aromatase may allow the hyena placenta to convert high circulating concentrations of androstenedione to testosterone, and could explain the virilization of the fetal external genitalia in female fetuses [103]. However, current data highlight a sexually dimorphic difference in placental function that may not be conferred by classical assumptions of sex steroid regulation. Testosterone may act in a sex specific manner in the human placenta and may be more potent in female placentas than males; however further investigations into the role of testosterone in placental function are required [33]. Nonetheless, unequal gene expression by the sex chromosomes has an impact much earlier, beginning at conception, and may set the context for events in later life (reviewed in [15,33,102,104]). Sex-linked genes and sex hormones may work together to yield similar differences in physiology between the sexes in brain. For instance, immune responses and cytokine production, or sex-linked genes like the androgen receptor, or Y-linked genes may exhibit sex differences because they can be

influenced differently by steroid hormones (reviewed in [105]). Thus, unfavorable programming, whether immediately before conception or during gestation, may result in various defects potentially translated into differences in susceptibility to disease between males and females [8,15,33,60,72,81,106].

Early involvement of sex chromosomes in sex differences

Even before implantation and the initiation of adrenal and gonad development, transcriptional sexual dimorphism is present in various species that has consequences for developmental competence and adult health and disease [43]. For example, in bovine blastocysts, sex determines the expression levels of one-third of all actively expressed genes [107]. Sexual dimorphism has also been observed in embryonic cells isolated from mice at E10.5. These cells responded differently to dietary stressors even before the production of fetal sex hormones [108]. In the mouse, detailed studies on sex chromosomal contribution to placental growth have been reported [37]. The X chromosome has been implicated in causing several malformations of the placenta. About 30% of all trophoblast-expressed genes are on the X chromosome, and alterations in many different X-linked genes could account for similar phenotypes [109,110]. Due to paternal X inactivation in trophoblast cells, mutations in these X-linked genes manifest themselves in embryonic lethality upon maternal transmission of the mutant allele in the mouse. A role for the Y chromosome in placental dysplasia has also been demonstrated [111]. It is also well-established that male fetuses have a higher rate of perinatal complications attributed to placental dysfunction that may relate to the abundance of X-linked genes involved in placentogenesis [112].

Unequal dosage and compensation mechanisms between males (XY) and females (XX)

Mammals have a very complex, tightly controlled, and developmentally regulated process of dosage compensation between males (XY) and females (XX). Two main kinds of dosage compensation exist: the first being to avoid X hyperexpression in females by equalizing the expression of the X-linked genes via inactivation of one of the two X-chromosomes in females (XCI: X-chromosome inactivation) and the second leading to the balanced expression between X-linked and autosomal genes via transcriptional upregulation of the active X in both sexes, males and females. There are two forms of XCI—imprinted and random [113,114]. The incomplete, and unstable imprinted inactivation of the paternally inherited X-chromosome is observed in certain eutherians (for example, rodents) at pre implantation stages of embryonic development and is retained in the extraembryonic organs that derive from the fetus. Therefore, in

mice, the paternal X chromosome is inactivated in the placenta [115]. In the cells that form the tissues of the embryo proper, the paternal X-chromosome is reactivated during implantation followed by a random inactivation of either the paternal or maternal X-chromosome [116]. The paternal imprint in the blastocyst trophoblast and their derivatives such as placenta seems to be unique to mice, not occurring in rabbits, bovines or humans where XCI occurs after the blastocyst stage [113].

However, not all X-linked genes are absolutely balanced. Several X-linked genes can escape XCI. More genes escape XCI in humans than in the mouse. While it has been estimated that 15 to 25% of the 1400 X-linked human genes escape XCI in humans, only 3% do so in the mouse [117-119]. There are also significant differences in terms of the distribution of « escape genes » in humans and mouse, with a random distribution along the mouse X chromosome, suggesting that escape is controlled at the level of individual genes rather than chromatin domains. This suggests that men and women may demonstrate greater sex differences in X-linked gene expression than mice as a result of the large number of escape genes. In addition, the degree of escape, hence the expression levels from inactive X, can vary considerably between loci, ranging from 5% to >75% of active X levels [117]. Although there are no data on the laboratory mouse, it is interesting that in common voles, more genes were expressed on the inactive X chromosome in extraembryonic tissues than in somatic tissues [120]. Escape from XCI can vary between different tissues and/or individuals and the escape can also be developmentally regulated. In mice, silencing of some X-chromosomal regions occurs outside of the usual time window and escape from XCI can be highly lineage specific [113,116,121].

There are also additional control mechanisms to achieve balanced or unbalanced expression between the sexes. Some genes on the X-chromosome are imprinted: their expression is monoallelic, depending on the parental origin of the allele. Recently, three genes have been described as imprinted and expressed from the paternal X allele: *Fthl17*, *Rhox5* and *Bex1*. This monoallelic paternal expression is independent of XCI. Therefore, these genes are expressed predominantly in female [122].

Male-specific Y chromosome genes

In addition to unequal expression of X-linked genes, the small number of expressed genes present on the Y chromosome (and therefore only expressed in males) may be involved. In humans 29 genes are conserved in the pseudoautosomal regions (PARs) of the X- and Y-chromosomes [123]. The non-recombining, male-specific Y region contains about 27 protein-coding genes

[124]. Some X/Y gene pairs have been retained on sex chromosomes and are referred to as paralogues. In the case of X/Y pairs, in contrast to humans, for which a number of X escapees do not have a Y paralogue, all known mouse escapees do have a Y paralogue [115,125]. Studies in mice and rats demonstrating sex differences in placental responses to changes in the maternal environment may thus indicate a role for these escaped genes, as the placentas of female fetuses may produce small differences in the amount of the corresponding proteins compared to amounts present in male fetuses. However, there are very few studies comparing levels of mRNA and proteins for escape vs. non-escape genes [101,126].

Placenta, brain and testis common evolutionary features?

The unique evolutionary pathway of the X- and Y-chromosomes has resulted in these chromosomes having highly atypical gene contents and activities [127]. The mapping of speciation genes has revealed one general rule: there is an apparent excess of sex and reproduction-related genes on the X-chromosome (reviewed in [128]). A preponderance of sex- and reproduction-related genes on the X chromosome has been shown repeatedly, but also mental retardation genes are more frequent on the X chromosome. Since the coordinate evolution of new characters is best attained when the same set of genes is redeployed, Wilda and co-workers suggested that new characters in the brain, testis and placenta are most responsible for human speciation [128].

Evolutionary constraints may thus be responsible for the presence of placental genes on the X chromosome that are co-expressed in brain and testis [109]. In human term placentas, Sood *et al.* have shown that many of the sex-correlated genes are located on the sex chromosomes, but that some are autosomal [129]. In addition, X- and Y-linked genes may modulate the expression of different sets of autosomal genes, leading to differences in physiological trajectories between males and females [15]. Thus, both the trajectories under basal conditions and those modulating responses differ between the sexes.

Gene expression and epigenetic marks: mechanisms and dynamics

Sex-specific epigenetic marks modulate sex-specific gene expression

The study of the epigenetic marks and mechanisms underlying sex differences is in its infancy. The epigenetic landscape required for placenta development has been described [130]. The sex of the placenta and the environment have an influence on its epigenomes, and hence on the epigenomes of the developing fetus. In all adult tissues examined to date, including the gonads and brain, the expression of many genes is modulated in a sex-specific manner [15,131,132]. Chromatin

structure and epigenetic marks differ between male and female samples in brain [133,134]. The adult liver is the organ in which these aspects have been best characterized, with genome-wide DNaseI-hypersensitive sites and sex-specific gene expression detected [135-138]. However, even with recent developments in this field, we still know little about the mechanisms underlying the early sex-specific expression of genes and gene networks resulting from epigenetic regulation in the placenta.

Within the context of DOHaD, epigenetic marks, which respond to the environment, record the effects of the environment during development in a sex-specific manner [139]. Developmental alterations to epigenetic marks may induce long-term changes in gene expression, potentially leading to disease in later life [140,141]. Efforts are now being made to determine the contribution of epigenetics to the establishment and maintenance of sex differences. Most DOHaD studies have reported sex-specific transmission and/or effects, but very few have tackled the sex-specific epigenetic mechanisms involved, and especially in the placenta. In a recent review, Novakovic and Saffery suggested that DNA methylation profiling highlights the unique nature of the human placental epigenome for genomic imprinting and placenta-specific gene-associated methylation. Placental cell types have a pattern of genome methylation that is significantly different from that in somatic tissues, with low methylation at some, but not all, repetitive elements (reviewed in [47]).

Sexually dimorphic patterns of gene expression have recently been reported for individual genes in placentas from humans and rodents, potentially accounting for differences in the sensitivity of male and female fetuses to maternal diet (reviewed in [15]). Considering these expression studies, it is noteworthy that sex differences have been observed in the mRNA levels of housekeeping genes and of commonly used reference genes in human placenta, in a variety of mouse somatic and extra-embryonic tissues, as well as in the preimplantation blastocyst and blastocyst-derived embryonic stem cells [142,143]. Although this is not surprising given the importance of sexual dimorphism in every tissue examined so far, it underlines the difficulty in choosing appropriate reference genes. Few groups have studied global sexual dimorphism in the placenta with microarrays, focusing in particular on the impact of maternal diet, asthma or stress on placental gene expression, through systemic investigations of the relationship between diet and the expression of sexually dimorphic genes. These transcriptomic analyses showed that basal gene expression levels were sexually dimorphic in whole placentas [27,61,129]. Even fewer studies have investigated the associated epigenetic changes [61,81].

Sex-specific impact of environmental influences

The expression of key enzymes of the epigenetic machinery mapping to autosomes also appears to be sex-dependent, even at early stages [41,144]. Levels of *Dnmt1* are similar in male and female bovine embryos, but *Dnmt3a* and *Dnmt3b* are produced in smaller amounts in female embryos [41]. Levels of DNA methylation have been reported to be lower in XX ES cell lines than in XY or XO lines, and this hypomethylation is thought to be associated with lower levels of *Dnmt3a* and *Dnmt3b* [145]. In mouse placenta, global DNA methylation is also sexually dimorphic in animals fed the CD, with lower methylation levels in the placentas of male offspring than in those of female offspring at E15.5 stage. Under HFD, hypomethylation was observed only in the female placenta. Consistent with this observation, expression of the gene encoding the DNA methyltransferase cofactor *Dnmt3l* was downregulated in females only [61,81]. Clearly, further studies are needed to understand the direct effects of sex chromosomes and gonadal hormones on the regulation of genes controlling histone acetylation and methylation, coregulatory proteins and transient and stable DNA methylation patterns.

Expression analysis has also shown that maternal high-fat diet (HFD) affects mouse placental gene expression in a sexually dimorphic manner [61]. A HFD during gestation triggers the deregulation of clusters of imprinted genes. Sexual dimorphism and sensitivity to diet were observed for nine of 20 imprinted genes, from four clusters on mouse chromosomes 6, 7, 12 and 17. An analysis of CpG methylation in the differentially methylated region of the chromosome 17 cluster revealed sex- and diet-specific differential methylation of individual CpGs in two conspicuous subregions. Bioinformatic analysis suggested that these differentially methylated CpGs might lie within recognition elements or binding sites for transcription factors or factors involved in chromatin remodeling [81]. Gregg *et al.* recently reported sexually dimorphic genomic imprinting in the brain, with sex-specific imprinted genes found mostly in females [146,147]. Given the importance of genomic imprinting in the brain and placenta, this provides new clues for further investigations of sexual dimorphism in the placenta.

The special case of X/Y pairs of paralogues

In the same study, transcriptomic analysis showed that both basal gene expression and response to maternal HFD were sexually dimorphic in whole placentas. The differences between the sexes in the transcriptomic response to HFD were not only quantitative but also qualitative. The biological functions and networks of genes dysregulated differed markedly in sex-specific ways, with involvement of immune cells and uptake and

metabolism of amino acids in females vs. the development and function of vascular system, and uptake and metabolism of glucose and fatty acids in males [61]. In this study, 11 genes displayed sexual dimorphism regardless of diet (control or HFD). Consistent with the key role of genes on the sex chromosomes, three of these genes were Y-specific, *Ddx3y*, *Eif2s3y* and *Kdm5d* (*Jarid1d*) and were more expressed in males, and three were X-specific, *Eif2s3x*, *Kdm5c* (*Jarid1c*) and *Ogt* and were more expressed in females. Interestingly, among these 6 X- and Y-linked genes, there were two paralogue pairs: *Eif2s3x/y* and *Kdm5c/5d* [61]. Of particular interest are the X-linked genes that encode enzymes of the epigenetic machinery and transcription factors: *Kmt1a* (*Suv39h1*), *Jpx*, *Xist*, *Kdm6b* (*Jmjd3*), *Kdm5c*, *Eif2s3x*, *Kdm6a* (*Utx*), *Ddx3x*, are on the X chromosome, as well as the corresponding paralogues for the latter ones, *Kdm5d*, *Eif2s3y*, *Uty*, and *Ddx3y* that are on the Y chromosome. Sex-specific differences in expression of the histone demethylases *Utx/Uty* and *Kdm5c* have been observed in mouse brain and neurons [148,149]. Other studies have reported the male-specific expression of Y-linked genes — *Ddx3y*, *Eif2s3y* and *Kdm5d* — in mouse hearts and human myocardium [150]. In mouse brain, Reinius and coworkers recently identified 4 female-biased long non-coding RNAs (lncRNAs) associated with protein-coding genes that escape X-inactivation, the *Ddx3x/Kdm6a* cluster, *Eif2s3x*, *2610029G223Rik*, and *Kdm5c* [151]. Given that placenta, brain and testis could share common mechanisms involving X-linked genes [128], these lncRNAs might also be implicated in placental development or function. Moreover, these mouse escapees from X-inactivation also have a paralogue on the Y-chromosome. According to the authors, these lncRNAs might also escape X-inactivation [151]. It would thus be interesting to investigate how these three mechanisms (escaping X inactivation, X/Y paralogues and lncRNA) participate in sexual dimorphism.

The proteins encoded by Y-linked genes may or may not have the same functions, the same target sequences or the same pattern of expression, according to age or tissue, as their X paralogue. In our study, in placenta of HFD fed mouse mothers, the Y- and X-linked histone demethylase paralogue genes *Kdm5c* and *Kdm5d* were sexually dimorphic. In another report, in mouse brain, expression of the Y version of the gene in male mice did not compensate for the dosage imbalance between the two sexes in the expression of their X homologs escaping X-inactivation. Figure 2 shows that, in placentas from mothers fed a control or high-fat diet, the Y-linked *Kdm5d* gene expression in males is not able to compensate the expression of *Kdm5c*, its X-linked paralogue escaping XIC, in females [61]. Thus the epigenetic

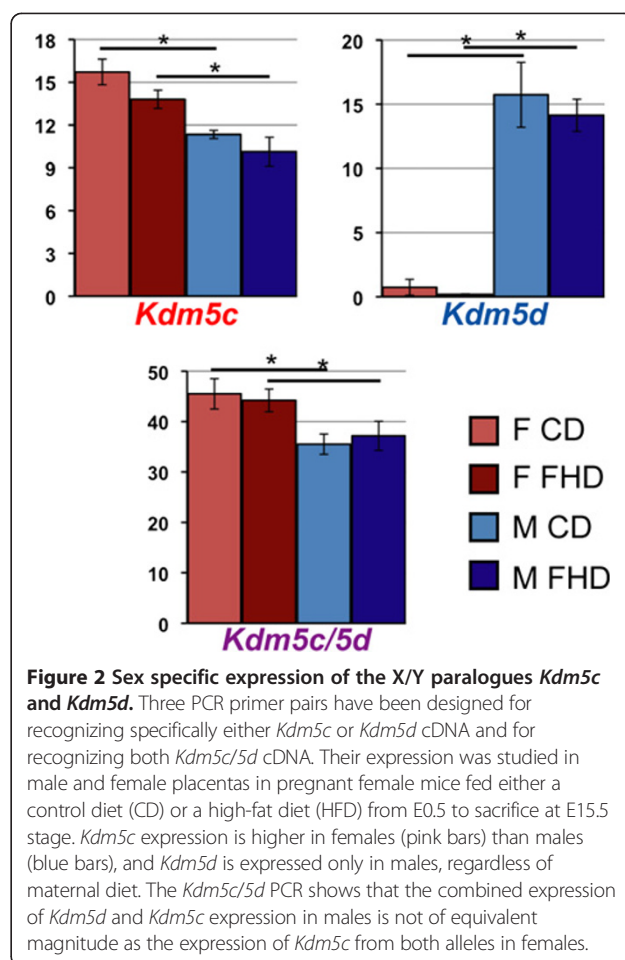


Figure 2 Sex specific expression of the X/Y paralogues *Kdm5c* and *Kdm5d*. Three PCR primer pairs have been designed for recognizing specifically either *Kdm5c* or *Kdm5d* cDNA and for recognizing both *Kdm5c/5d* cDNA. Their expression was studied in male and female placentas in pregnant female mice fed either a control diet (CD) or a high-fat diet (HFD) from E0.5 to sacrifice at E15.5 stage. *Kdm5c* expression is higher in females (pink bars) than males (blue bars), and *Kdm5d* is expressed only in males, regardless of maternal diet. The *Kdm5c/5d* PCR shows that the combined expression of *Kdm5d* and *Kdm5c* expression in males is not of equivalent magnitude as the expression of *Kdm5c* from both alleles in females.

enzymes produced by these two genes could mark the epigenome in a sex-specific manner, both at the quantitative and qualitative levels [152].

Conclusion

The DOHaD concept is consistent with the possibility that environmental influences can affect the development of sex differences early in development and in particular in the placenta, sculpting its epigenomes, and hence the epigenomes of the developing fetus [36]. But where, how, and when sex differences begin in the placenta and how they contribute to sex-specific responses of somatic tissues later in life is still poorly understood. The sex of the embryo affects the size of both the fetus and the placenta, and the ability of the placenta to respond to adverse stimuli [27,32,33]. Female and male placentas have different routes to maximize fitness and therefore the two sexes have different optimal transcriptomes that may affect fetal growth and later disease susceptibility or health trajectory [61]. Differences in how male and female placentas cope with stressful conditions indicate that this tissue should also be taken

into account if we want to understand how it contributes to sexual dimorphism later in life. The placenta may therefore be seen as an ideal system to study the sensing, by the fetus, of stresses, starvation, endocrine disruption and obesity-prone diets or lifestyles, in a sex-specific manner [51,88].

Several critical issues remain to be addressed for unravelling the sexually dimorphic nature of programming in utero. We still know little about the mechanisms underlying the early sex-specific expression of genes and gene networks resulting from epigenetic regulation in the placenta. Elucidation of the biological basis of differences in male and female development will improve our understanding of the respective contributions of hormones, X- and Y-linked genes, autosomal genes, and their possible synergistic or antagonistic interactions [12,105,138]. An understanding of these factors and of the sex-specific genetic and epigenetic architecture of human disease might also reveal the existence of sex-specific protective mechanisms that could be exploited in novel treatments [153]. Thus if we are to use the placenta as an indicator of what occurred in utero, it is crucial to understand how, in addition to sex-specific differences in the endocrine and immune systems [154,155], sex-specific genetic architecture [156] also influences placental growth and specific functions [112,157], both under normal conditions or severe placental dysfunction [63,158]. Finally, unravelling the epigenetic marks and mechanisms underlying these sex differences in physiological trajectories and in response to environmental changes represents a major health challenge.

These findings highlight the importance of studying both sexes in epidemiological protocols and dietary interventions. Where possible, effects should be investigated in a sex-specific manner in order to provide solid scientific evidence for sex-specific interventions and recommendations. The striking sexual dimorphism for programming trajectories necessitates a considerable revision of current dietary intervention protocols. The identification of sex-specific explanations of the responses and adaptation of males and females to dietary quality, quantity and other environmental factors should help physicians and patients anticipate the major challenges likely to occur during the patient's lifetime. In that context, placental analyses could be used to identify children at risk of adverse programming.

Owing to the flexibility of epigenetic processes, the DOHAD and their underlying epigenetic mechanisms offer a new possibility to envisage a comprehensive and evidence-based plan of nutritional, behavioral, and socio-economical recommendations to apply new cost-effective preventive actions against NCDs, in a sex-specific manner [159-161].

Abbreviations

CD: Control diet; CVD: Cardiovascular disease; Dnmt: DNA methyltransferase; DOHAD: Developmental origins of health and disease; FPI: Fetus-to-placenta weight ratio index; HFD: High-fat diet; Kdm: Lysine-specific histone demethylase; Kmt: Lysine-specific histone methyltransferase; lncRNA: Long non-coding RNA; NCD: Non-communicable disease; T2D: Type 2 diabetes; XCI: X-chromosome inactivation.

Competing interests

The authors declare that they have no competing interests.

Authors' contributions

CJ edited this manuscript based on contributions from the other authors. All authors read and approved the final manuscript.

Acknowledgements

AG and CJ were supported by the *Fondation Cœur et Artères* (FCA N° 05-T4), the *Institut Benjamin Delessert*, the *Agence Nationale pour la Recherche* (ANR 06-PNRA-022-01) and *Contrat Cadre d'Aide au Projet d'Innovation Stratégique Industrielle "IT-Diab"* OSEO-ISI (18/12/2008). LM was supported by the NIH HLBI-079647 and TW-001188 grants. TM was supported by a Science Foundation Ireland Principal Investigator Award.

Author details

¹INRA, UMR1198 Biologie du Développement et Reproduction, F-78352, Jouy-en-Josas, France. ²Department of Obstetrics and Gynecology, Academic Medical Center, Amsterdam, the Netherlands. ³Department of Clinical Epidemiology, Biostatistics and Bioinformatics, Academic Medical Center, Amsterdam, the Netherlands. ⁴Department of Biochemistry, Biosciences Institute, University College Cork, College Road, Cork, Ireland. ⁵Department of Obstetrics and Gynecology, University of Colorado Denver, Aurora, CO, USA. ⁶UVSQ, Université Versailles Saint-Quentin en Yvelines, Guyancourt, France.

Received: 2 November 2012 Accepted: 4 March 2013

Published: 21 March 2013

References

1. Maher B: Personal genomes: the case of the missing heritability. *Nature* 2008, **456**:18-21.
2. Hanson M, Godfrey KM, Lillycrop KA, Burdge GC, Gluckman PD: Developmental plasticity and developmental origins of non-communicable disease: theoretical considerations and epigenetic mechanisms. *Prog Biophys Mol Biol* 2011, **106**:272-280.
3. Buchmann AF, Schmid B, Blomeyer D, Becker K, Treutlein J, Zimmermann US, Jennen-Steinmetz C, Schmidt MH, Esser G, Banaschewski T, et al: Impact of age at first drink on vulnerability to alcohol-related problems: testing the marker hypothesis in a prospective study of young adults. *J Psychiatr Res* 2009, **43**:1205-1212.
4. Matsuzaki M, Milne JS, Aitken RP, Wallace JM: Overnourishing pregnant adolescent ewes preserves perirenal fat deposition in their growth-restricted fetuses. *Reprod Fertil Dev* 2006, **18**:357-364.
5. Watkins A, Lucas ES, Fleming T: Impact of the periconceptional environment on the programming of adult disease. *J Dev Origins Health Dis* 2010:1-9. doi:10.1017/S2040174409990195.
6. Carone BR, Fauquier L, Habib N, Shea JM, Hart CE, Li R, Bock C, Li C, Gu H, Zamore PD, et al: Paternally induced transgenerational environmental reprogramming of metabolic gene expression in mammals. *Cell* 2010, **143**:1084-1096.
7. Jimenez-Chillaron JC, Isganaitis E, Charalambous M, Gesta S, Pentinat-Pelegrin T, Faucette RR, Otis JP, Chow A, Diaz R, Ferguson-Smith A, Patti ME: Intergenerational transmission of glucose intolerance and obesity by in utero undernutrition in mice. *Diabetes* 2009, **58**:460-468.
8. Ng SF, Lin RC, Laybutt DR, Barres R, Owens JA, Morris MJ: Chronic high-fat diet in fathers programs beta-cell dysfunction in female rat offspring. *Nature* 2010, **467**:963-966.
9. Barker DJ, Lampl M, Roseboom T, Winder N: Resource allocation in utero and health in later life. *Placenta* 2012, **33**(Suppl 2):e30-e34.
10. Barker DJ, Larsen G, Osmond C, Thornburg KL, Kajantie E, Eriksson JG: The placental origins of sudden cardiac death. *Int J Epidemiol* 2012, **41**:1394-1399.

11. Kelly-Irving M, Mabile L, Grosclaude P, Lang T, Delpierre C: **The embodiment of adverse childhood experiences and cancer development: potential biological mechanisms and pathways across the life course.** *Int J Public Health* 2013, **58**(1):3–11.
12. Waddell J, McCarthy MM: **Sexual differentiation of the brain and ADHD: what is a sex difference in prevalence telling us?** *Curr Top Behav Neurosci* 2012, **9**:341–360.
13. Bale TL: **Sex differences in prenatal epigenetic programming of stress pathways.** *Stress* 2011, **14**:348–356.
14. van Abeelen AF, de Rooij SR, Osmond C, Painter RC, Veenendaal MV, Bossuyt PM, Elias SG, Grobbee DE, van der Schouw YT, Barker DJ, Roseboom TJ: **The sex-specific effects of famine on the association between placental size and later hypertension.** *Placenta* 2011, **32**:694–698.
15. Gabory A, Attig L, Junien C: **Sexual dimorphism in environmental epigenetic programming.** *Mol Cell Endocrinol* 2009, **25**:8–18.
16. Barker DJ: **The fetal origins of diseases of old age.** *Eur J Clin Nutr* 1992, **46**(Suppl 3):S3–S9.
17. Walker CL, Ho SM: **Developmental reprogramming of cancer susceptibility.** *Nat Rev Cancer* 2012, **12**:479–486.
18. Hemberger M, Cross JC: **Genes governing placental development.** *Trends Endocrinol Metab* 2001, **12**:162–168.
19. John R, Hemberger M: **A placenta for life.** *Reprod Biomed Online* 2012, **25**:5–11.
20. Roseboom TJ, Painter RC, de Rooij SR, van Abeelen AF, Veenendaal MV, Osmond C, Barker DJ: **Effects of famine on placental size and efficiency.** *Placenta* 2011, **32**:395–399.
21. Lahti J, Raikkonen K, Sovio U, Miettunen J, Hartikainen AL, Pouta A, Taanila A, Joukamaa M, Jarvelin MR, Veijola J: **Early-life origins of schizotypal traits in adulthood.** *Br J Psychiatry* 2009, **195**:132–137.
22. Thornburg KL, O'Tierney PF, Louey S: **Review: the placenta is a programming agent for cardiovascular disease.** *Placenta* 2010, **31**(Suppl): S54–S59.
23. Novakovic B, Saffery R: **DNA methylation profiling highlights the unique nature of the human placental epigenome.** *Epigenomics* 2010, **2**:627–638.
24. Liang C, Decourcy K, Prater MR: **High-saturated-fat diet induces gestational diabetes and placental vasculopathy in C57BL/6 mice.** *Metabolism* 2010, **59**:943–950.
25. Cross JC, Mickelson L: **Nutritional influences on implantation and placental development.** *Nutr Rev* 2006, **64**:S12–S18. discussion S72–91.
26. Constanica M, Angiolini E, Sandovici I, Smith P, Smith R, Kelsey G, Dean W, Ferguson-Smith A, Sibley CP, Reik W, Fowden A: **Adaptation of nutrient supply to fetal demand in the mouse involves interaction between the Igf2 gene and placental transporter systems.** *Proc Natl Acad Sci U S A* 2005, **102**:19219–19224.
27. Mao J, Zhang X, Sieli PT, Falduto MT, Torres KE, Rosenfeld CS: **Contrasting effects of different maternal diets on sexually dimorphic gene expression in the murine placenta.** *Proc Natl Acad Sci U S A* 2010, **107**:5557–5562.
28. Gheorghe CP, Goyal R, Mittal A, Longo LD: **Gene expression in the placenta: maternal stress and epigenetic responses.** *Int J Dev Biol* 2010, **54**:507–523.
29. Coan PM, Vaughan OR, Sekita Y, Finn SL, Burton GJ, Constanica M, Fowden AL: **Adaptations in placental phenotype support fetal growth during undernutrition of pregnant mice.** *J Physiol* 2010, **588**:527–538.
30. Reynolds LP, Borowicz PP, Caton JS, Vonnahme KA, Luther JS, Hammer CJ, Maddock Carlin KR, Grazul-Bilska AT, Redmer DA: **Developmental programming: the concept, large animal models, and the key role of uteroplacental vascular development.** *J Anim Sci* 2010, **88**:E61–E72.
31. Lubchenko LO, Hansman C, Dressler M, Boyd E: **Intrauterine growth as estimated from liveborn birth-weight data at 24 to 42 weeks of gestation.** *Pediatrics* 1963, **32**:793–800.
32. Clifton VL, Hodyl NA, Murphy VE, Giles WB, Baxter RC, Smith R: **Effect of maternal asthma, inhaled glucocorticoids and cigarette use during pregnancy on the newborn insulin-like growth factor axis.** *Growth Horm IGF Res* 2010, **20**:39–48.
33. Clifton VL: **Review: sex and the human placenta: mediating differential strategies of fetal growth and survival.** *Placenta* 2010, **31**(Suppl):S33–S39.
34. Clifton VL: **Sexually dimorphic effects of maternal asthma during pregnancy on placental glucocorticoid metabolism and fetal growth.** *Cell Tissue Res* 2005, **322**:63–71.
35. Clifton V, Osei-Kumah A, Hodyl N, Scott N, Stark M: **Sex specific function of the human placenta: implication for fetal growth and survival.** *Reprod Fertil Dev* 2009, **21**:9. abstract.
36. Moritz KM, Cuffe JS, Wilson LB, Dickinson H, Wlodke ME, Simmons DG, Denton KM: **Review: sex specific programming: a critical role for the renal renin-angiotensin system.** *Placenta* 2010, **31**(Suppl):S40–S46.
37. Ishikawa H, Rattigan A, Fundele R, Burgoyne PS: **Effects of sex chromosome dosage on placental size in mice.** *Biol Reprod* 2003, **69**:483–488.
38. Mittwoch U: **Blastocysts prepare for the race to be male.** *Hum Reprod* 1993, **8**:1550–1555.
39. Eriksson JG, Kajantie E, Osmond C, Thornburg K, Barker DJ: **Boys live dangerously in the womb.** *Am J Hum Biol* 2010, **22**:330–335.
40. Bermejo-Alvarez P, Rizo D, Rath D, Loneran P, Gutierrez-Adan A: **Micro-array analysis reveals that one third of the genes actively expressed are differentially expressed between male and female bovine blastocysts.** *Biol Reprod* 2009, **81**.
41. Bermejo-Alvarez P, Rizo D, Rath D, Loneran P, Gutierrez-Adan A: **Epigenetic differences between male and female bovine blastocysts produced in vitro.** *Physiol Genomics* 2008, **32**:264–272.
42. Sturmeijer RG, Bermejo-Alvarez P, Gutierrez-Adan A, Rizo D, Leese HJ, Loneran P: **Amino acid metabolism of bovine blastocysts: a biomarker of sex and viability.** *Mol Reprod Dev* 2010, **77**:285–296.
43. Bermejo-Alvarez P, Rizo D, Loneran P, Gutierrez-Adan A: **Transcriptional sexual dimorphism during preimplantation embryo development and its consequences for developmental competence and adult health and disease.** *Reproduction* 2011, **141**:563–570.
44. Lampl M, Gotsch F, Kusanovic JP, Gomez R, Nien JK, Frongillo EA, Romero R: **Sex differences in fetal growth responses to maternal height and weight.** *Am J Hum Biol* 2010, **22**:431–443.
45. Wallace JM, Horgan GW, Bhattacharya S: **Placental weight and efficiency in relation to maternal body mass index and the risk of pregnancy complications in women delivering singleton babies.** *Placenta* 2012, **33**:611–618.
46. Mueller BR, Bale TL: **Sex-specific programming of offspring emotionality after stress early in pregnancy.** *J Neurosci* 2008, **28**:9055–9065.
47. Novakovic B, Saffery R: **The ever growing complexity of placental epigenetics - role in adverse pregnancy outcomes and fetal programming.** *Placenta* 2012, **33**:959–970.
48. Rassoulzadegan M, Cuzin F: **The making of an organ: RNA mediated developmental controls in mice.** *Organogenesis* 2010, **6**:33–36.
49. Roseboom T, de Rooij S, Painter R: **The Dutch famine and its long-term consequences for adult health.** *Early Hum Dev* 2006, **82**:485–491.
50. Stark MJ, Wright IMR, Clifton VL: **Sex-specific alterations in placental 11 {beta}-hydroxysteroid dehydrogenase 2 activity and early postnatal clinical course following antenatal betamethasone.** *Am J Physiol Regul Integr Comp Physiol* 2009, **297**:R510–R514.
51. Barouki R, Gluckman PD, Grandjean P, Hanson M, Heindel JJ: **Developmental origins of non-communicable disease: implications for research and public health.** *Environ Health* 2012, **11**:42.
52. Armitage JA, Taylor PD, Poston L: **Experimental models of developmental programming: consequences of exposure to an energy rich diet during development.** *J Physiol* 2005, **565**:3–8.
53. Nathanielsz PW, Poston L, Taylor PD: **In utero exposure to maternal obesity and diabetes: animal models that identify and characterize implications for future health.** *Obstet Gynecol Clin North Am* 2007, **34**:201–212. vii–viii.
54. Levin BE, Govek E: **Gestational obesity accentuates obesity in obesity-prone progeny.** *Am J Physiol* 1998, **275**:R1374–R1379.
55. Dabelea D, Hanson RL, Lindsay RS, Pettitt DJ, Imperatore G, Gabir MM, Roumain J, Bennett PH, Knowler WC: **Intrauterine exposure to diabetes conveys risks for type 2 diabetes and obesity: a study of discordant sibships.** *Diabetes* 2000, **49**:2208–2211.
56. Boloker J, Gertz SJ, Simmons RA: **Gestational diabetes leads to the development of diabetes in adulthood in the rat.** *Diabetes* 2002, **51**:1499–1506.
57. Jessen HM, Auger AP: **Sex differences in epigenetic mechanisms may underlie risk and resilience for mental health disorders.** *Epigenetics* 2012, **6**:857–861.
58. McGowan PO, Suderman M, Sasaki A, Huang TC, Hallett M, Meaney MJ, Szyf M: **Broad epigenetic signature of maternal care in the brain of adult rats.** *PLoS One* 2012, **6**:e14739.
59. Gallou-Kabani C, Vige A, Gross MS, Rabes JP, Boileau C, Larue-Achagiotis C, Tome D, Jais JP, Junien C: **C57BL/6J and A/J mice fed a high-fat diet**

- delineate components of metabolic syndrome. *Obesity (Silver Spring)* 2007, **15**:1996–2005.
60. Dunn GA, Morgan CP, Bale TL: **Sex-specificity in transgenerational epigenetic programming.** *Horm Behav* 2010, **59**:290–295.
61. Gabory A, Ferry L, Fajardy I, Jouneau L, Gothie JD, Vige A, Fleur C, Mayeur S, Gallou-Kabani C, Gross MS, et al: **Maternal diets trigger sex-specific divergent trajectories of gene expression and epigenetic systems in mouse placenta.** *PLoS One* 2012, **7**:e47986.
62. Gilbert JS, Nijland MJ: **Sex differences in the developmental origins of hypertension and cardiovascular disease.** *Am J Physiol Regul Integr Comp Physiol* 2008, **295**:R1941–R1952.
63. Prescott SL, Tulic M, Kumah AO, Richman T, Crook M, Martino D, Dunstan JA, Novakovic B, Saffery R, Clifton VL: **Reduced placental FOXP3 associated with subsequent infant allergic disease.** *J Allergy Clin Immunol* 2011, **128**:886–887. e885.
64. Clifton VL, Stark MJ, Osei-Kumah A, Hodyl NA: **Review: the feto-placental unit, pregnancy pathology and impact on long term maternal health.** *Placenta* 2012, **33**(Suppl):S37–S41.
65. Skinner MK, Manikkam M, Guerrero-Bosagna C: **Epigenetic transgenerational actions of environmental factors in disease etiology.** *Trends Endocrinol Metab* 2010, **21**(4):214–222.
66. Morrison JL, Botting KJ, Dyer JL, Williams SJ, Thornburg KL, McMillen IC: **Restriction of placental function alters heart development in the sheep fetus.** *Am J Physiol Regul Integr Comp Physiol* 2007, **293**:R306–R313.
67. Owens JA, Thavaneswaran P, De Blasio MJ, McMillen IC, Robinson JS, Gatford KL: **Sex-specific effects of placental restriction on components of the metabolic syndrome in young adult sheep.** *Am J Physiol Endocrinol Metab* 2007, **292**:E1879–E1889.
68. Godfrey KM: **The role of the placenta in fetal programming—a review.** *Placenta* 2002, **23**:S20–S27.
69. Winder NR, Krishnaveni GV, Hill JC, Karat CL, Fall CH, Veena SR, Barker DJ: **Placental programming of blood pressure in Indian children.** *Acta Paediatr* 2011, **100**:653–660.
70. Lash GE, Burton GJ, Chamley LW, Clifton VL, Constancia M, Crocker IP, Dantzer V, Desoye G, Drewlo S, Hemmings DG, et al: **IFPA meeting 2009 workshops report.** *Placenta* 2010, **31**(Suppl):S4–S20.
71. Barker DJ, Thornburg KL, Osmond C, Kajantie E, Eriksson JG: **The surface area of the placenta and hypertension in the offspring in later life.** *Int J Dev Biol* 2010, **54**:525–530.
72. Eriksson JG, Kajantie E, Osmond C, Thornburg K, Barker DJ: **Boys live dangerously in the womb.** *Am J Hum Biol* 2009, **22**:330–335.
73. Eckel RH, Alberti KG, Grundy SM, Zimmet PZ: **The metabolic syndrome.** *Lancet* 2010, **375**:181–183.
74. Igosheva N, Abramov AY, Poston L, Eckert JJ, Fleming TP, Duchon MR, McConnell J: **Maternal diet-induced obesity alters mitochondrial activity and redox status in mouse oocytes and zygotes.** *PLoS One* 2010, **5**:e10074.
75. Bermejo-Alvarez P, Rosenfeld CS, Roberts RM: **Effect of maternal obesity on estrous cyclicity, embryo development and blastocyst gene expression in a mouse model.** *Hum Reprod* 2012, **27**:3513–3522.
76. Godfrey K, Robinson S, Barker DJ, Osmond C, Cox V: **Maternal nutrition in early and late pregnancy in relation to placental and fetal growth.** *BMJ* 1996, **312**:410–414.
77. Samuelsson AM, Matthews PA, Argenton M, Christie MR, McConnell JM, Jansen EH, Piersma AH, Ozanne SE, Twinn DF, Remacle C, et al: **Diet-induced obesity in female mice leads to offspring hyperphagia, adiposity, hypertension, and insulin resistance: a novel murine model of developmental programming.** *Hypertension* 2008, **51**:383–392.
78. Liang C, Oest ME, Prater MR: **Intrauterine exposure to high saturated fat diet elevates risk of adult-onset chronic diseases in C57BL/6 mice.** *Birth Defects Res B Dev Reprod Toxicol* 2009, **86**:377–384.
79. Fowden AL, Sferruzzi-Perri AN, Coan PM, Constancia M, Burton GJ: **Placental efficiency and adaptation: endocrine regulation.** *J Physiol* 2009, **587**:3459–3472.
80. Sibley CP, Brownbill P, Dilworth M, Glazier JD: **Review: adaptation in placental nutrient supply to meet fetal growth demand: implications for programming.** *Placenta* 2010, **31**(Suppl):S70–S74.
81. Gallou-Kabani C, Gabory A, Tost J, Karimi M, Mayeur S, Lesage J, Boudadi E, Gross MS, Taurelle J, Vige A, et al: **Sex- and diet-specific changes of imprinted gene expression and DNA methylation in mouse placenta under a high-fat diet.** *PLoS One* 2010, **5**:e14398.
82. Golding J, Steer C, Pembrey M: **Parental and grandparental ages in the autistic spectrum disorders: a birth cohort study.** *PLoS One* 2010, **5**:e9939.
83. Pembrey ME: **Male-line transgenerational responses in humans.** *Hum Fertil (Camb)* 2010, **13**:268–271.
84. Curley JP, Mashoodh R, Champagne FA: **Epigenetics and the origins of paternal effects.** *Horm Behav* 2011, **59**(3):306–314.
85. Anderson LM, Riffle L, Wilson R, Travlos GS, Lubomirski MS, Alvord WG: **Preconceptional fasting of fathers alters serum glucose in offspring of mice.** *Nutrition* 2006, **22**:327–331.
86. L'Abée C, Vrieze I, Kluck T, Erwich JJ, Stolk RP, Sauer PJ: **Parental factors affecting the weights of the placenta and the offspring.** *J Perinat Med* 2011, **39**:27–34.
87. Franklin TB, Linder N, Russig H, Thony B, Mansuy IM: **Influence of early stress on social abilities and serotonergic functions across generations in mice.** *PLoS One* 2011, **6**:e21842.
88. Goel N, Bale TL: **Examining the intersection of sex and stress in modelling neuropsychiatric disorders.** *J Neuroendocrinol* 2009, **21**:415–420.
89. Kapoor A, Petropoulos S, Matthews SG: **Fetal programming of hypothalamic-pituitary-adrenal (HPA) axis function and behavior by synthetic glucocorticoids.** *Brain Res Rev* 2008, **57**:586–595.
90. Drake AJ, Tang JI, Nyirenda MJ: **Mechanisms underlying the role of glucocorticoids in the early life programming of adult disease.** *Clin Sci (Lond)* 2007, **113**:219–232.
91. Giussani DA, Fletcher AJ, Gardner DS: **Sex differences in the ovine fetal cortisol response to stress.** *Pediatr Res* 2011, **69**:118–122.
92. Drake AJ, Liu L, Kerrigan D, Meehan RR, Seckl JR: **Multigenerational programming in the glucocorticoid programmed rat is associated with generation-specific and parent of origin effects.** *Epigenetics* 2011, **6**(11):1334–1343.
93. Dietz DM, Laplant Q, Watts EL, Hodes GE, Russo SJ, Feng J, Oosting RS, Vialou V, Nestler EJ: **Paternal transmission of stress-induced pathologies.** *Biol Psychiatry* 2011, **70**:408–414.
94. Franklin TB, Russig H, Weiss IC, Graff J, Linder N, Michalon A, Vizi S, Mansuy IM: **Epigenetic transmission of the impact of early stress across generations.** *Biol Psychiatry* 2010, **68**:408–415.
95. Guerrero-Bosagna C, Skinner MK: **Environmentally induced epigenetic transgenerational inheritance of phenotype and disease.** *Mol Cell Endocrinol* 2012, **354**:3–8.
96. Gore AC: **Developmental programming and endocrine disruptor effects on reproductive neuroendocrine systems.** *Front Neuroendocrinol* 2008, **29**:358–374.
97. Rauh VA, Perera FP, Horton MK, Whyatt RM, Bansal R, Hao X, Liu J, Barr DB, Slotkin TA, Peterson BS: **Brain anomalies in children exposed prenatally to a common organophosphate pesticide.** *Proc Natl Acad Sci U S A* 2012, **109**:7871–7876.
98. Belcher SM, Chen Y, Yan S, Wang HS: **Rapid estrogen receptor-mediated mechanisms determine the sexually dimorphic sensitivity of ventricular myocytes to 17beta-estradiol and the environmental endocrine disruptor bisphenol A.** *Endocrinology* 2011, **153**:712–720.
99. Perera F, Herbstman J: **Prenatal environmental exposures, epigenetics, and disease.** *Reprod Toxicol* 2011, **31**:363–373.
100. Avissar-Whiting M, Veiga KR, Uhl KM, Maccani MA, Gagne LA, Moen EL, Marsit CJ: **Bisphenol A exposure leads to specific microRNA alterations in placental cells.** *Reprod Toxicol* 2010, **29**:401–406.
101. Howerton CL, Bale TL: **Prenatal programming: at the intersection of maternal stress and immune activation.** *Horm Behav* 2012, **62**(3):237–242.
102. Davies W, Wilkinson LS: **It is not all hormones: alternative explanations for sexual differentiation of the brain.** *Brain Res* 2006, **1126**:36–45.
103. Yalcinkaya TM, Siiteri PK, Vigne JL, Licht P, Pavgi S, Frank LG, Glickman SE: **A mechanism for virilization of female spotted hyenas in utero.** *Science* 1993, **260**:1929–1931.
104. Al-Khan A, Aye IL, Barsoum I, Borbely A, Cebral E, Cerchi G, Clifton VL, Collins S, Cotechini T, Davey A, et al: **IFPA Meeting 2010 Workshops Report II: placental pathology; trophoblast invasion; fetal sex; parasites and the placenta; decidua and embryonic or fetal loss; trophoblast differentiation and syncytialisation.** *Placenta* 2011, **32**(Suppl 2):S90–S99.
105. Xu J, Disteche CM: **Sex differences in brain expression of X- and Y-linked genes.** *Brain Res* 2006, **1126**:50–55.
106. Kwong WY, Miller DJ, Wilkins AP, Dear MS, Wright JN, Osmond C, Zhang J, Fleming TP: **Maternal low protein diet restricted to the preimplantation period induces a gender-specific change on hepatic gene expression in rat fetuses.** *Mol Reprod Dev* 2007, **74**:48–56.

107. Bermejo-Alvarez P, Rizo D, Rath D, Lonergan P, Gutierrez-Adan A: **Sex determines the expression level of one third of the actively expressed genes in bovine blastocysts.** *Proc Natl Acad Sci U S A* 2010, **107**:3394–3399.
108. Penaloza C, Estevez B, Orlanski S, Sikorska M, Walker R, Smith C, Smith B, Lockshin RA, Zakeri Z: **Sex of the cell dictates its response: differential gene expression and sensitivity to cell death inducing stress in male and female cells.** *FASEB J* 2009, **23**:1869–1879.
109. Hemberger M: **The role of the X chromosome in mammalian extra embryonic development.** *Cytogenet Genome Res* 2002, **99**:210–217.
110. Zechner U, Hemberger M, Constancia R, Orth A, Dragatsis I, Luttges A, Hameister H, Fundele R: **Proliferation and growth factor expression in abnormally enlarged placentas of mouse interspecific hybrids.** *Dev Dyn* 2002, **224**:125–134.
111. Hemberger M, Kurz H, Orth A, Otto S, Luttges A, Elliott R, Nagy A, Tan SS, Tam P, Zechner U, Fundele RH: **Genetic and developmental analysis of X-inactivation in interspecific hybrid mice suggests a role for the Y chromosome in placental dysplasia.** *Genetics* 2001, **157**:341–348.
112. Walker MG, Fitzgerald B, Keating S, Ray JG, Windrim R, Kingdom JC: **Sex-specific basis of severe placental dysfunction leading to extreme preterm delivery.** *Placenta* 2012, **33**:568–571.
113. Okamoto I, Patrat C, Thepot D, Peynot N, Fauque P, Daniel N, Diabangouaya P, Wolf JP, Renard JP, Duranthon V, Heard E: **Eutherian mammals use diverse strategies to initiate X-chromosome inactivation during development.** *Nature* 2011, **472**:370–374.
114. Berletch JB, Yang F, Xu J, Carrel L, Disteche CM: **Genes that escape from X inactivation.** *Hum Genet* 2011, **130**:237–245.
115. Berletch JB, Yang F, Disteche CM: **Escape from X inactivation in mice and humans.** *Genome Biol* 2010, **11**:213.
116. Chow J, Heard E: **X inactivation and the complexities of silencing a sex chromosome.** *Curr Opin Cell Biol* 2009, **21**:359–366.
117. Carrel L, Willard HF: **X-inactivation profile reveals extensive variability in X-linked gene expression in females.** *Nature* 2005, **434**:400–404.
118. Prothero KE, Stahl JM, Carrel L: **Dosage compensation and gene expression on the mammalian X chromosome: one plus one does not always equal two.** *Chromosome Res* 2009, **17**:637–648.
119. Yang F, Babak T, Shendure J, Disteche CM: **Global survey of escape from X inactivation by RNA-sequencing in mouse.** *Genome Res* 2010, **20**:614–622.
120. Dementyeva EV, Shevchenko AI, Anopriyenko OV, Mazurok NA, Elisaphenko EA, Nesterova TB, Brockdorff N, Zakian SM: **Difference between random and imprinted X inactivation in common voles.** *Chromosoma* 2010, **119**:541–552.
121. Patrat C, Okamoto I, Diabangouaya P, Vialon V, Le Baccon P, Chow J, Heard E: **Dynamic changes in paternal X-chromosome activity during imprinted X-chromosome inactivation in mice.** *Proc Natl Acad Sci U S A* 2009, **106**:5198–5203.
122. Kobayashi S, Fujihara Y, Mise N, Kaseda K, Abe K, Ishino F, Okabe M: **The X-linked imprinted gene family Fthl17 shows predominantly female expression following the two-cell stage in mouse embryos.** *Nucleic Acids Res* 2010, **38**:3672–3681.
123. Ross MT, Grafham DV, Coffey AJ, Scherer S, McLay K, Muzny D, Platzer M, Howell GR, Burrows C, Bird CP, et al: **The DNA sequence of the human X chromosome.** *Nature* 2005, **434**:325–337.
124. Skaletsky H, Kuroda-Kawaguchi T, Minx PJ, Cordum HS, Hillier L, Brown LG, Repping S, Pyntikova T, Ali J, Bieri T, et al: **The male-specific region of the human Y chromosome is a mosaic of discrete sequence classes.** *Nature* 2003, **423**:825–837.
125. Disteche CM, Filippova GN, Tsuchiya KD: **Escape from X inactivation.** *Cytogenet Genome Res* 2002, **99**:36–43.
126. Xu J, Watkins R, Arnold AP: **Sexually dimorphic expression of the X-linked gene Eif2s3x mRNA but not protein in mouse brain.** *Gene Expr Patterns* 2006, **6**:146–155.
127. Graves JA: **Review: sex chromosome evolution and the expression of sex-specific genes in the placenta.** *Placenta* 2010, **31**(Suppl):S27–S32.
128. Wilda M, Bachner D, Zechner U, Kehr-Sawatzki H, Vogel W, Hameister H: **Do the constraints of human speciation cause expression of the same set of genes in brain, testis, and placenta?** *Cytogenet Cell Genet* 2000, **91**:300–302.
129. Sood R, Zehnder JL, Druzin ML, Brown PO: **Gene expression patterns in human placenta.** *Proc Natl Acad Sci U S A* 2006, **103**:5478–5483.
130. Hemberger M: **Epigenetic landscape required for placental development.** *Cell Mol Life Sci* 2007, **64**:2422–2436.
131. Kang HJ, Kawasaki YI, Cheng F, Zhu Y, Xu X, Li M, Sousa AM, Pletikos M, Meyer KA, Sedmak G, et al: **Spatio-temporal transcriptome of the human brain.** *Nature* 2012, **478**:483–489.
132. Yang X, Schadt EE, Wang S, Wang H, Arnold AP, Ingram-Drake L, Drake TA, Lusis AJ: **Tissue-specific expression and regulation of sexually dimorphic genes in mice.** *Genome Res* 2006, **16**:995–1004.
133. Qureshi IA, Mehler MF: **Genetic and epigenetic underpinnings of sex differences in the brain and in neurological and psychiatric disease susceptibility.** *Prog Brain Res* 2010, **186**:77–95.
134. McCarthy MM, Auger AP, Bale TL, De Vries GJ, Dunn GA, Forger NG, Murray EK, Nugent BM, Schwarz JM, Wilson ME: **The epigenetics of sex differences in the brain.** *J Neurosci* 2009, **29**:12815–12823.
135. Waxman DJ, Holloway MG: **Centennial perspective: sex differences in the expression of hepatic drug metabolizing enzymes.** *Mol Pharmacol* 2009, **76**(2):215–228.
136. Ling G, Sugathan A, Mazor T, Fraenkel E, Waxman DJ: **Unbiased, genome-wide in vivo mapping of transcriptional regulatory elements reveals sex differences in chromatin structure associated with sex-specific liver gene expression.** *Mol Cell Biol* 2010, **30**:5531–5544.
137. van Nas A, Guhathakurta D, Wang SS, Yehya N, Horvath S, Zhang B, Ingram-Drake L, Chaudhuri G, Schadt EE, Drake TA, et al: **Elucidating the role of gonadal hormones in sexually dimorphic gene coexpression networks.** *Endocrinology* 2009, **150**:1235–1249.
138. Wauthier V, Sugathan A, Meyer RD, Dombkowski AA, Waxman DJ: **Intrinsic sex differences in the early growth hormone responsiveness of sex-specific genes in mouse liver.** *Mol Endocrinol* 2010, **24**:667–678.
139. Heijmans BT, Tobi EW, Lumey LH, Slagboom PE: **The epigenome: archive of the prenatal environment.** *Epigenetics* 2009, **4**:526–531.
140. Attig L, Gabory A, Junien C: **Early nutrition and epigenetic programming: chasing shadows.** *Curr Opin Clin Nutr Metab Care* 2010, **13**:284–293.
141. Wu Q, Suzuki M: **Parental obesity and overweight affect the body-fat accumulation in the offspring: the possible effect of a high-fat diet through epigenetic inheritance.** *Obes Rev* 2006, **7**:201–208.
142. Cleal JK, Day PL, Hanson MA, Lewis RM: **Sex differences in the mRNA levels of housekeeping genes in human placenta.** *Placenta* 2010, **31**:556–557.
143. Lucas ES, Watkins AJ, Cox AL, Marfy-Smith SJ, Smyth N, Fleming TP: **Tissue-specific selection of reference genes is required for expression studies in the mouse model of maternal protein undernutrition.** *Theriogenology* 2011, **76**:558–569.
144. Bermejo-Alvarez P, Lonergan P, Rath D, Gutierrez-Adan A, Rizo D: **Developmental kinetics and gene expression in male and female bovine embryos produced in vitro with sex-sorted spermatozoa.** *Reprod Fertil Dev* 2010, **22**:426–436.
145. Zvetkova I, Apedaile A, Ramsahoye B, Mermoud JE, Crompton LA, John R, Feil R, Brockdorff N: **Global hypomethylation of the genome in XX embryonic stem cells.** *Nat Genet* 2005, **37**:1274–1279.
146. Gregg C, Zhang J, Weissbourd B, Luo S, Schroth GP, Haig D, Dulac C: **High-resolution analysis of parent-of-origin allelic expression in the mouse brain.** *Science* 2010, **329**:643–648.
147. Gregg C, Zhang J, Butler JE, Haig D, Dulac C: **Sex-specific parent-of-origin allelic expression in the mouse brain.** *Science* 2010, **329**:682–685.
148. Xu J, Deng X, Disteche CM: **Sex-specific expression of the X-linked histone demethylase gene Jarid1c in brain.** *PLoS One* 2008, **3**:e2553.
149. Xu J, Deng X, Watkins R, Disteche CM: **Sex-specific differences in expression of histone demethylases Utx and Uty in mouse brain and neurons.** *J Neurosci* 2008, **28**:4521–4527.
150. Isensee J, Witt H, Pregla R, Hetzer R, Regitz-Zagrosek V, Noppinger PR: **Sexually dimorphic gene expression in the heart of mice and men.** *J Mol Med (Berl)* 2008, **86**:61–74.
151. Reinius B, Shi C, Hengshuo L, Sandhu KS, Radomska KJ, Rosen GD, Lu L, Kullander K, Williams RW, Jazin E: **Female-biased expression of long non-coding RNAs in domains that escape X-inactivation in mouse.** *BMC Genomics* 2010, **11**:614.
152. Xu J, Burgoyne PS, Arnold AP: **Sex differences in sex chromosome gene expression in mouse brain.** *Hum Mol Genet* 2002, **11**:1409–1419.
153. Arnold AP, Lusis AJ: **Understanding the sexome: measuring and reporting sex differences in gene systems.** *Endocrinology* 2012.
154. Hochberg Z, Feil R, Constancia M, Fraga M, Junien C, Carel JC, Boileau P, Le Bouc Y, Deal CL, Lillycrop K, et al: **Child health, developmental plasticity, and epigenetic programming.** *Endocr Rev* 2011, **32**:159–224.
155. Invernizzi P, Pasini S, Selmi C, Gershwin ME, Podda M: **nf.** *J Autoimmun* 2009, **33**:12–16.

156. Ober C, Loisel DA, Gilad Y: **Sex-specific genetic architecture of human disease.** *Nat Rev Genet* 2008, **9**:911–922.
157. Lewis RM, Cleal JK, Ntani G, Crozier SR, Mahon PA, Robinson SM, Harvey NC, Cooper C, Inskip HM, Godfrey KM, *et al*: **Relationship between placental expression of the imprinted PHLDA2 gene, intrauterine skeletal growth and childhood bone mass.** *Bone* 2011, **50**:337–342.
158. Hemberger M: **Health during pregnancy and beyond: fetal trophoblast cells as chief co-ordinators of intrauterine growth and reproductive success.** *Ann Med* 2012, **44**:325–337.
159. Doyle O, Harmon CP, Heckman JJ, Tremblay RE: **Investing in early human development: timing and economic efficiency.** *Econ Hum Biol* 2009, **7**:1–6.
160. Hanson MA, Gluckman PD, Ma RC, Matzen P, Biesma RG: **Early life opportunities for prevention of diabetes in low and middle income countries.** *BMC Publ Health* 2012, **12**:1025.
161. Ferguson-Smith AC, Patti ME: **You are what your dad ate.** *Cell Metab* 2011, **13**:115–117.

doi:10.1186/2042-6410-4-5

Cite this article as: Gabory *et al.*: Placental contribution to the origins of sexual dimorphism in health and diseases: sex chromosomes and epigenetics. *Biology of Sex Differences* 2013 **4**:5.

Submit your next manuscript to BioMed Central and take full advantage of:

- Convenient online submission
- Thorough peer review
- No space constraints or color figure charges
- Immediate publication on acceptance
- Inclusion in PubMed, CAS, Scopus and Google Scholar
- Research which is freely available for redistribution

Submit your manuscript at
www.biomedcentral.com/submit

