

SCOPING REVIEW

Open Access



The influence of innate and adaptative immune responses on the differential clinical outcomes of leprosy

Adriana Barbosa de Lima Fonseca^{1†}, Marise do Vale Simon^{1†}, Rodrigo Anselmo Cazzaniga¹, Tatiana Rodrigues de Moura¹, Roque Pacheco de Almeida^{1,3}, Malcolm S. Duthie², Steven G. Reed² and Amelia Ribeiro de Jesus^{1,3*}

Abstract

Leprosy is a chronic infectious disease caused by *Mycobacterium leprae*. According to official reports from 121 countries across five WHO regions, there were 213 899 newly diagnosed cases in 2014. Although leprosy affects the skin and peripheral nerves, it can present across a spectrum of clinical and histopathological forms that are strongly influenced by the immune response of the infected individuals. These forms comprise the extremes of tuberculoid leprosy (TT), with a *M. leprae*-specific Th1, but also a Th17, response that limits *M. leprae* multiplication, through to lepromatous leprosy (LL), with *M. leprae*-specific Th2 and T regulatory responses that do not control *M. leprae* replication but rather allow bacterial dissemination. The inter-polar borderline clinical forms present with similar, but less extreme, immune biases. Acute inflammatory episodes, known as leprosy reactions, are complications that may occur before, during or after treatment, and cause further neurological damages that can cause irreversible chronic disabilities. This review discusses the innate and adaptive immune responses, and their interactions, that are known to affect pathogenesis and influence the clinical outcome of leprosy.

Keywords: Leprosy, Clinical presentation, Immunology, Innate immunity, Immune pathogenesis

Multilingual abstracts

Please see Additional file 1 for translations of the abstract into the six official working languages of the United Nations.

Introduction

Leprosy is a human chronic infectious disease caused by the bacillus *Mycobacterium leprae*. It is an ancient affliction that continues to have a significant global impact with official reports from 121 countries across five WHO regions recording 213 899 newly diagnosed cases in 2014 [1].

M. leprae is an alcohol acid-resistant bacilli with a remarkably slow replication rate that, to date, has eluded

attempts to culture it axenically in vitro [2, 3]. Although leprosy affects the skin and peripheral nerves and can cause irreversible impairment of nerve function and chronic disability, it is believed that the main route of *M. leprae* transmission is via the airways [4]. However, anecdotal reports strongly suggest that trauma-related transmission is likely, and there is also the strong suggestion of zoonotic leprosy cases resulting from contact with armadillos and the demonstration of environmental reservoirs such as water sources and amoebal cysts [5, 6].

Leprosy patients can present across an extremely wide spectrum. The Ridley and Jopling classification involves clinical, pathological, bacilloscopic, and immunological criteria, allowing a thorough characterization of six forms: the polar tuberculoid (TT) and lepromatous leprosy (LL) forms, as well the intermediate borderline tuberculoid (BT), borderline borderline (BB), and borderline lepromatous (BL) forms [7–9]. A sixth classification, indeterminate leprosy (IL), is also commonly used.

* Correspondence: ameliaribeirodejesus@gmail.com

[†]Equal contributors

¹Department of Medicine, Molecular Biology Laboratory, University Hospital, Universidade Federal de Sergipe, São Cristóvão, Sergipe, Brazil

³Instituto de Investigação em Imunologia, Institutos Nacionais de Ciência e Tecnologia, CNPq, São Paulo, SP, Brazil

Full list of author information is available at the end of the article



Even after treatment, patients require regular follow-up as they often present with tissue-damaging inflammatory leprosy reactions or may already have permanent neurologic deficit [10]. The spectral nature of the disease is closely associated with the type of immune response in the infected individual, making it an attractive system to investigate the immune regulation and pathogenic mechanisms, as well as the influence of host genetics upon these [10, 11]. Indeed, studies over the past 30 years have identified various determinants of leprosy and have illuminated the contribution of immunopathogenesis to disease. Many gaps remain in our knowledge and an improved understanding would provide insight toward not only leprosy but other infectious and immune-mediated diseases. This review outlines the current understanding of the innate and adaptive immune responses against *M. leprae* and their role in determining disease outcome.

Immunopathogenic mechanisms of differing leprosy presentations

The cardinal signs of leprosy are skin lesions with altered sensation, thickened peripheral nerves, and the presence of alcohol acid-resistant bacilli. According to the World Health Organization (WHO) classification, based on smear examination or the number of lesions at diagnosis, the patients are classified into two operational groups that guide treatment: multibacillary (MB, more than five skin lesions or positive smear) and paucibacillary (PB, less than 5 lesions) [12]. Skin lesions from the extreme PB form, TT, are hypopigmented, well-bordered and with a low bacillary load. The extreme MB form, LL, is characterized by poor granuloma formation, several infiltrated skin lesions with high bacterial load. Borderline leprosy is characterized by multiple irregular and coalescent lesions, with a 'Swiss cheese' aspect and usually positive bacilloscopy [13]. PB leprosy patients are treated for 6 months with a cocktail consisting of rifampicin and dapsone. Due to their increased infection status, MB leprosy patients are treated for 12 months with clofazimine in addition to rifampicin and dapsone.

Polarization of the immune response specific to *M. leprae* is an important element in the pathogenesis of leprosy and in determining the clinical manifestation. A T helper (Th) 1 cytokine response has been documented at the lesional levels of TT, while a Th2 cytokine response are associated to LL forms of leprosy [14]. The immune response of TT patients is characterized by a Th1 cytokine response (interferon gamma [IFN- γ], interleukin (IL)-2, IL-15, and tumor necrosis factor [TNF]), vigorous T-cell responses to *M. leprae* antigens, and containment of the bacilli in well-formed granulomas [2, 15]. In TT lesions, macrophages are activated so that they resemble epithelial cells (at this point, they are called "epithelioid cells"), and CD4⁺ T cells are the predominant cell type. There is little evidence of *M. leprae*-

specific humoral immunity [15, 16]. In contrast, the immune response of LL patients is characterized by a Th2 immune profile with production of IL-4 and IL-10 and activation of T regulatory cells (T reg), robust but not protective antibody production including formation of immune complexes, and failure to restrict *M. leprae* growth. Compared to TT, lesions from LL patients are relatively deficient in CD4⁺ T cells, but rather have numerous CD8⁺ T cells and macrophages heavily infected with bacilli that develop a characteristic foamy appearance [15–19]. Palermo et al. reported a higher number of Tregs and greater expression of IL-10 and cytotoxic T lymphocyte antigen-4 (CTLA-4) in LL lesions than TT lesions [20].

The balance of Th1/Th2 responses alone, however, cannot fully explain the response in leprosy. Other T cell subsets, such as T regulatory and Th17 cells, have been identified as having important roles in determining host immunity. FoxP3 positive regulatory T cells (Treg) producing TGF- β can suppress effector T cell function and were increased in stable lepromatous patients, which may explain the anergy associated with this leprosy clinical form [21]. Conversely, Th17 cells produce IL-17A, IL-17E, IL-21 and IL-22, leading to tissue inflammation and destruction, neutrophil recruitment, activating macrophages, and enhancing Th1 effector cells [21–23]. Th17 cells were first identified in experimental encephalitis and subsequently in rheumatoid arthritis, leishmaniasis and tuberculosis [21, 23]. Although several studies have demonstrated a protective role of IL-17 against other intracellular pathogens and associated diseases, relatively few reports have investigated the role of these cytokines in leprosy [21, 24]. Okada and colleagues (2015) studied families with susceptibility to *Candida albicans* and *Mycobacterium* infection and described a bi-allelic RORC mutation that resulted in the absence of IL-17A/F-producing T cells in these individuals, an impaired IFN- response to *Mycobacterium* [24]. Sadhu and colleagues demonstrated that Th17 cells are more frequent in BT and TT patients, as compared to BL and LL patients, and these cells potentiate IFN- γ production and inhibit IL-10 production by T regulatory cells. This suggests that Th17 cells also have a protective function against *M. leprae* infection [15].

The borderline forms are immunologically dynamic. There is a mixed histopathological aspect and a progressive reduction of the cell-mediated response from the BT to the BB and BL forms, accompanied by more numerous neurocutaneous lesions and increased bacterial load [4].

In an unusual presentation of leprosy, 5–15% of patients can present with a pure neuritic form (PNL) characterized by asymmetric involvement of peripheral nerves, but absence of cutaneous manifestations. This condition may be manifested as paresthesia or anesthesia, or a change in muscle strength [20].

Contribution of early events in defining clinical outcome

The innate immune response appears critical in defining the course of *M. leprae* infection and, ultimately, the clinical outcome (Fig. 1). *M. leprae* bacilli are initially recognized by several innate immune receptors, including Toll-like receptors (TLR). *M. leprae* predominantly activates the TLR2/1 heterodimer expressed in macrophages of the skin, which mediates cell activation to initiate killing of *M. leprae*. TLR2 and TLR1 are more strongly expressed in lesions of the localized TT form as compared with the disseminated LL form of the disease [25–28]. Schwann cells can also express TLR2 and the activation of TLR2 on these cells contributes to nerve damage in leprosy [29].

Cytokines such as IL-15 and IL-10 are differentially produced during the innate immune response and are known to regulate macrophage function. IL-15 is expressed in TT lesions and induces antimicrobial activity and the vitamin D-dependent antimicrobial program in macrophages, resulting in phagocytosis of mycobacteria that restricts the ability to establish infection [30]. In LL patients, IL-4 both downregulates TLR2/1 expression and inhibits the TLR2/1-induced cytokine response of macrophages. While IL-10 has no direct effect on TLR2/1 expression, it can strongly inhibit TLR2/1-induced cytokine release [26].

Activation of leukocyte immunoglobulin-like receptor subfamily A member 2 (LILRA2), expressed in several immune cells including macrophages, may control the ability

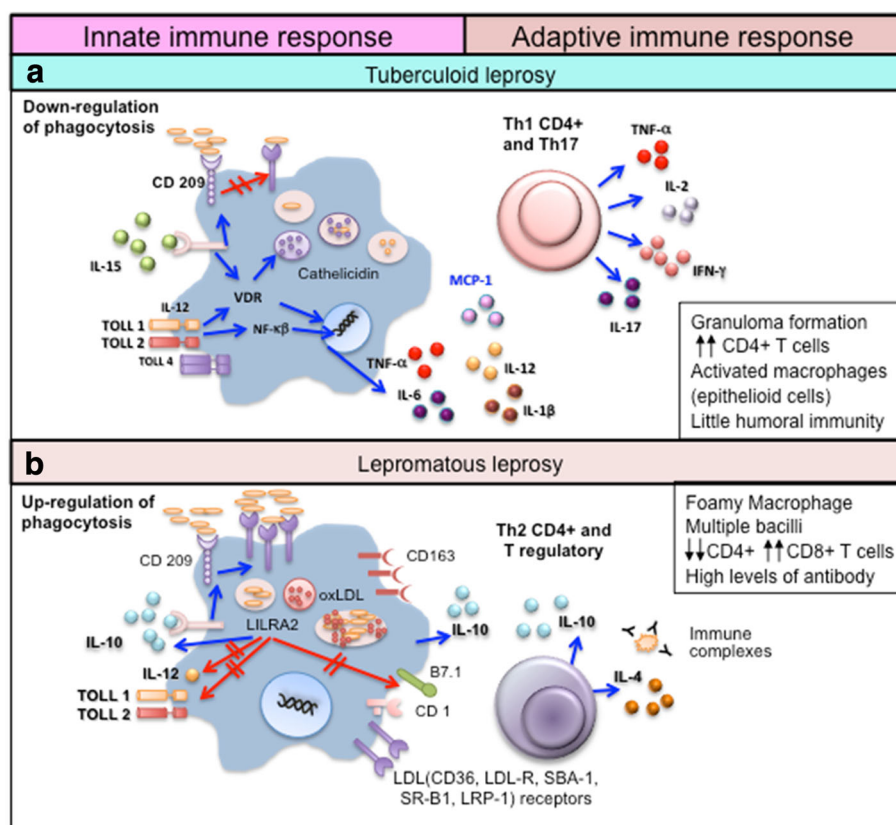


Fig. 1 Immune response in the polar clinical forms of leprosy. **a** In tuberculoid leprosy (TT) patients, the innate immune response is activated by *M. leprae* through toll-like receptors (TLR2/1). IL-15 stimulates the vitamin D-dependent antimicrobial program in macrophages and inhibits phagocytosis of mycobacteria. These events promote a Th1 T-cell cytokine response (IFN- γ , IL-2, TNF, and IL-15) that contains the infection in well-formed granulomas, and a Th17 response (IL-17A, IL-17F, IL-21 and IL-22) that leads to tissue inflammation and destruction, neutrophil recruitment, macrophage activation, and enhancement of Th1 effector cells. **b** In lepromatous leprosy (LL) patients, IL-4, IL-10, leukocyte immunoglobulin-like receptor subfamily A member 2 (LILRA2), and oxidized phospholipids inhibit TLR2/1-induced cytokine responses but preserve IL-10 release. In addition, immune complexes trigger IL-10 production and increase phagocytosis of *M. leprae*, ApoB, haptoglobin-hemoglobin complex and oxidized phospholipids by macrophages through the receptors CD209 and CD163, without activating the vitamin D-dependent antimicrobial pathway. The foamy appearance of macrophages is due to the accumulation of lipid droplets (LD) inside these cells. There is an upregulation of perilipin and the adipose differentiation-related protein in the endoplasmic reticulum–Golgi complex with the formation of vesicles containing lipids, phospholipids, cholesterol ester, and cholesterol. Further, there is an increase in both the synthesis of LDL receptors (such as CD36, LDL-R, SBA-1, SR-B1, and LRP-1) and uptake of endogenous cholesterol that accumulates intracellularly. This induces a Th2 and Treg immune profile, with the production of IL-4 and IL-10, antibody production, absence of granulomas, and failure to restrict *M. leprae* growth [26, 31, 32, 41–46]

of the innate immune system to activate the adaptive T cell response. Although the ligand for LILRA2 has not been identified, its activation inhibits TLR2/1-induced IL-12 release but maintains IL-10 release, and while the mechanism of LILRA2 activation during leprosy remains uncertain, LILRA2 is notably more highly expressed in LL than in TT lesions [31]. The LILRA2-expressing cells identified in LL lesions belong to a monocyte/macrophage lineage and co-express CD209, which is essential in mediating the uptake of mycobacteria by macrophages. Accordingly, expression of CD209 increases the uptake of *M. leprae*, resulting in higher bacterial loads. Similarly, oxidized phospholipids inhibit TLR2/1-induced IL-12 release, but preserve IL-10 release [32]. Immune complexes, which are abundant in the LL form due to the large quantity of antibodies that are produced, can trigger macrophages to produce IL-10 [33, 34].

The phagocytic program induced in macrophages by IL-10 is most apparent in leprosy patients that progress to the extreme LL clinical form [33, 34]. IL-10-stimulated macrophages enhance phagocytosis of both oxidized low-density lipoprotein and mycobacteria, but without triggering the vitamin D-dependent antimicrobial pathway. This divergence between the phagocytic and antimicrobial pathways likely promotes an intracellular environment that favors mycobacterial survival. IL-10-programmed macrophages are characterized by high expression of C-type lectin receptors (CD209 and CD206) and scavenger receptors (CD163, SR-A, CD36, and MARCO). CD163 mediates the uptake of hemoglobin-haptoglobin complex, thus providing a source of iron for mycobacterial survival [35], and triggers further IL-10 production [36]. All of these C-type lectin and scavenger receptors are implicated in the uptake of apoptotic cells, apoprotein B (ApoB), lipids and lipoproteins, that are nutrient sources for *M. leprae* [37], and are also associated with functions related to the maintenance of tissue homeostasis by macrophages [37–40]. Lipid uptake also inhibits the innate immune response against the bacteria by diminishing TLR-induced antimicrobial activity and by skewing the cytokine balance toward IL-10 secretion whilst inhibiting IL-12 production [41]. This IL-10-derived macrophage pathway is found in the MB forms and enhances phagocytosis of oxidized phospholipids and additional *M. leprae*. Studies have shown a colocalization of the CD209 and CD163 markers, *M. leprae*, apoprotein B, and host-derived oxidized phospholipids within the phagosomes [26, 41]. Biopsies from LL patients exhibit macrophages that are packed with lipid droplets (LD), named “foamy macrophages” [42, 43]. Additional mechanisms such as enhanced cell survival through decreased apoptosis may also contribute to the foamy macrophage characteristic of LL lesions [44]. Schwann cells (SC) from LL patients also have a foamy phenotype, and LD accumulation seems to be associated with the pathophysiology of leprosy [45, 46].

As the most efficient antigen-presenting cells, dendritic cells (DC) play an important role in connecting innate and adaptive immunity but the actual contribution of DC subsets to the pathogenesis of leprosy remains controversial. Whereas some studies have reported a larger number of DC in the lesions of TT patients [47, 48], others have suggested that plasmacytoid DC are not involved in host responses against *M. leprae* [49, 50].

Immunopathogenesis of leprosy reactions

In the complex evolution of leprosy, two types of spontaneous acute inflammatory phenomena, are known to occur. These “leprosy reactions” occur in 30–50% of patients at some time during the course of their disease [51, 52]. Reactions can present with intense neural inflammation, resulting in sudden and even permanent loss of sensory, autonomic and motor functions. Besides aggravating the neural lesions, reactions frequently require prolonged treatment with toxic drugs such as corticosteroids and/or thalidomide, which is a major concern for the leprosy patients.

Reactions are classified into two main types: Type I reactions, also commonly known as reversal reaction (RR), and Type II reaction, commonly known as erythema nodosum leprosum (ENL) [51, 52]. The mediators of tissue damage in these reactions are partially known, with increased amounts of Th1 cytokines such as IFN- γ , IL-12, and IL-2 clearly demonstrated in both RR and ENL [51, 53] (Fig. 2). It remains unclear, however, whether the inflammatory profile observed in the lesions or blood during reactions is the cause or consequence of these reactions.

Type I reactions (RR)

RR occurs in 30% of patients and involve a sudden activation of an inflammatory response to *M. leprae* antigens. RR are the main cause of nerve damage in leprosy and occur most frequently after the initiation of treatment, most often arising in the first two months after the initiation of chemotherapy. This reflects a switch from a Th2-predominant toward a Th1 response [17, 53–57]. Affected patients present with swollen hands and feet, exacerbation of cutaneous lesions and neural involvement, that can result in hospitalization [55, 58].

Both innate and adaptive immune responses participate in the pathogenesis of RR. RR lesions are associated with a type-IV (or delayed-type) hypersensitivity reaction and immunophenotyping studies have indicated that the number and percentage of CD4+ T cells are increased in reacting skin lesions [4, 59, 60]. The vitamin D-dependent antimicrobial pathway is activated, and IL-1, IL-2, IL-6, IL-8, IL-12 p40, IFN- γ , TNE, IL-2 receptor [61], and CXC chemokine-10 (CXCL10 or IP10) are detected in the circulation and cutaneous lesions [60]. The tumor necrosis

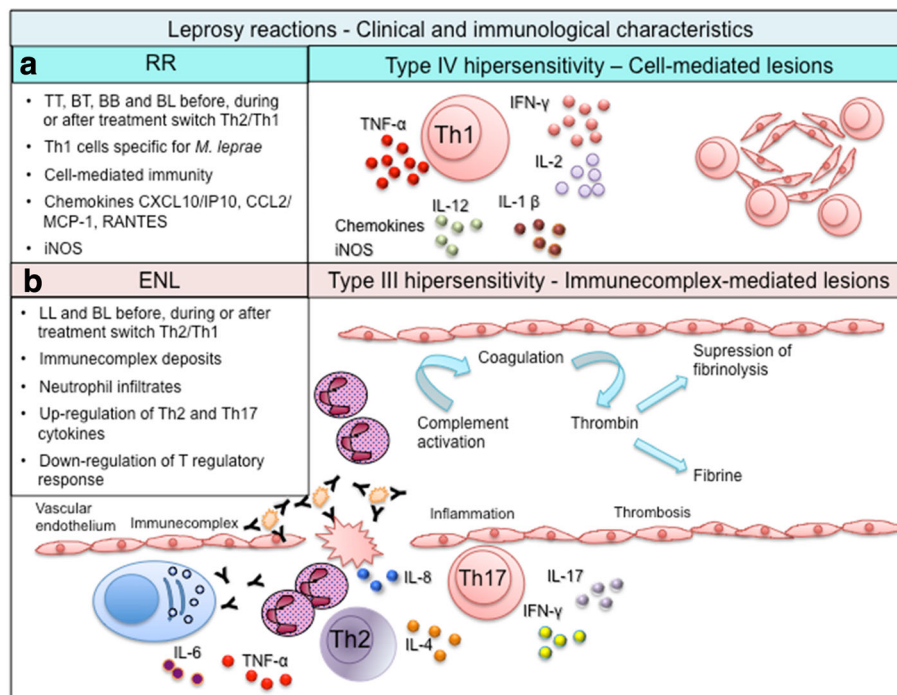


Fig. 2 Immunological aspects of leprosy reactions. **a** RR represents a type IV hypersensitivity reaction. Sudden activation of an inflammatory response to *M. leprae* antigens, often after the initiation of treatment, triggers a transient conversion from a Th2 toward a Th1 response. The cytokine expression pattern in lesions indicates enhancement of the Th1 response along with activation of the innate response and inflammatory products. **b** ENL involves high levels of TNF, immune complex-associated vasculitis, and intralesional infiltration of neutrophils, eosinophils, and CD4+ T cells. ENL is initiated by the deposition of immune complexes and activation of complement, triggering elevation of several pro-inflammatory cytokines, neutrophilic infiltrates, and vasculitis [61–64, 82, 83]

factor superfamily (TNFSF) is essential for the induction of programmed cell death and costimulation of distinct cell types [62, 63] and the TNFSF15 locus has been associated with susceptibility for leprosy in Chinese individuals. A recent study from Brazil and Vietnam reported that the TNFSF8 locus, but not the TNFSF15 locus, confers susceptibility to RR [62]. Overall, the cytokine expression pattern in the RR lesions indicates enhancement of the Th1 response with accompanying, or related, activation of the innate immune response and inflammatory products.

Type II reactions (ENL)

ENL affects patients with poor cellular immune responses but who have preserved humoral responses, and thus presents in MB patients with high levels of anti-*M. leprae* immunoglobulins. ENL is characterized by an abrupt onset of erythematous and painful nodules accompanied by systemic symptoms such as fever, lymph node infarction, bone tenderness and hepatosplenomegaly. Neuritis can persist for years as a chronic and recurrent symptom in most patients [64].

ENL is usually initiated by deposition of immune complexes and activation of the complement cascade, resulting in vasculitis or a type-III hypersensitivity reaction [7]. High immunoglobulin levels and low levels of complement

components (a sign of complement activation) can be detected along with the presence of platelet-derived growth factor BB (PDGF-BB) [60, 65]. PDGF-BB is known to promote angiogenesis and is a potential marker of ENL [65].

ENL lesions present with deposits of immunoglobulins, complement and some mycobacterial constituents [66], along with expression of IL-6, IL-8, and IL-10 mRNA and sustained expression of IL-4 and IL-5 mRNA, consistent with neutrophil chemotaxis and antibody production [67]. Tissue infiltration by CD4 cells and neutrophils occurs [64]. The same cytokines as mentioned earlier for RR are also found at high levels in the plasma during ENL, but in ENL there are significantly higher levels of IL-4, IL-5, IL-10, IL-6, IL-7 and TNF [60, 61, 68–72]. The most severe reactions are associated with increased production of TNF and IFN- γ and IFN- γ injections have been shown to activate ENL lesions [52, 73, 74]. While FoxP3 expressing Treg producing TGF- β are increased in stable lepromatous leprosy patients, patients with reactions exhibit an imbalance in Th17 and Treg populations [22]. These data suggest that Treg may exert control on the inflammatory response during leprosy reactions.

Moreover, Vieira et al. determined either the frequency of circulating Tregs in patients with RR and ENL or the frequency of Tregs and interleukin IL-17, IL-6, and

(TGF)- β -expressing cells not only peripheral blood but in biopsies taken before and during the reaction episodes. Their results suggest that in ENL, downmodulation of Tregs may influence the development of Th-17 responses that characterize this reaction [75].

Early diagnosis of leprosy reactions is crucial for efforts to reduce tissue damage and prevent disabilities. Khadge and colleagues (2015) showed that in newly diagnosed patients from Bangladesh, Brazil, Ethiopia and Nepal the production IFN- γ , IP-10, IL-17 and VEGF in supernatants from *M. leprae* antigen-stimulated cells increased during type 1 reaction, as compared to patients without leprosy reactions [76]. There is, however, a lack of biomarkers that are capable of reliably predicting reactions within endemic populations [76].

Neuropathy

Nerve injury is the hallmark of progressive *M. leprae* infection and is present in all forms of leprosy [77–79]. Physical impairment in leprosy is defined as any reduction in sensory or motor functions. Since neurological involvement is inherent to all forms of leprosy, disability is a frequent complication, resulting from the natural course of disease [58]. The major determinant of neuronal injury is the ability of *M. leprae* to bind and infect SC. *M. leprae* phenolic glycolipid (PGL)-I interacts with the laminin-2 receptor located on the SC membrane [53, 80–82] and laminin-binding protein 21 (LBP21) mediates the intracellular entry of *M. leprae* into the SC [82, 83].

In TT patients, neural damage has a direct positive correlation with IFN- γ [67]. The activated Th1 response and development of strong cellular immunity contribute to the formation of tuberculoid granulomas and caseous necrosis, and may culminate in the appearance of abscesses and complete destruction of the nerves [4]. In contrast, in LL patients exhibiting Th2 responses, the neuropathy is directly related to the *M. leprae* infection of peripheral nerves.

Conclusions

Our current knowledge postulates that the initial interaction between the *M. leprae* and the host innate immune response impacts the initial growth and establishment of infection, then potentially influencing the type of adaptive immune response that is induced against the infection. Although considerable progress has been made in understanding leprosy and the factors involved in its clinical outcomes, an improved understanding of the early events of *M. leprae* infection are needed. This will hopefully help us better understand the diverse pathogenic events that can occur later in infection, to predict clinical outcomes and risk for complications, make improvements in drug design and individualized therapies possible, and to reveal the potential for novel immunotherapies. Given its spectral

presentation leprosy is an instructive human disease that allows for direct and controlled comparison of immune responses, in particular, CD4 T cell differentiation and discoveries in leprosy can therefore provide critical insight that can be applied to other immune- and pathogen-mediated diseases.

Additional file

Additional file 1: Multilingual abstracts in the six official working languages of the United Nations. (PDF 1008 kb)

Abbreviations

ApoB: Apoprotein B; BB: Borderline borderline; BL: Borderline lepromatous; BT: Borderline tuberculoid; CTLA-4: Cytotoxic T lymphocyte antigen-4; ENL: Erythema nodosum leprosum; IFN- γ : Interferon gamma; IL: Indeterminate leprosy; IL: Interleukin; IL-10: Interleukin-10; LBP21: Laminin-binding protein 21; LD: Lipid droplets; LILRA2: Leukocyte immunoglobulin-like receptor subfamily A member 2; LL: Lepromatous leprosy; MB: Multibacillary; PB: Paucibacillary; PGL: Phenolic glycolipid; PNL: Pure neuritic form; RR: Reversal reaction; SC: Schawnn cell; T regs: T regulatory cells; Th1 cell: T helper 1 cell; Th17: T helper 17 cell; Th2 cell: T helper 2 cell; TLRs: Toll-like receptors; TNF: Tumor necrosis factor; TT: Tuberculoid leprosy; WHO: World Health Organization

Acknowledgements

Not applicable.

Funding

This work was supported by the Conselho Nacional de Desenvolvimento Científico e Tecnológico – CNPq, Edital MCT/CNPq No 14/2009 – Universal, the Fundação de Apoio à Pesquisa e à Inovação Tecnológica do Estado de Sergipe – FAPITEC/SE/Conselho Nacional de Desenvolvimento Científico e Tecnológico – CNPq, EDITAL FAPITEC/SE/FUNTEC/CNPq No. 12/2009 (Programa de Núcleos de Excelência – PRONEX), Process no. 019.203.02712/2009-8 and American Leprosy Missions. MS and RAC received a fellowship from CAPES. ARJ is a CNPq investigator.

Availability of data and materials

For this review we used the freely available literature databases “PubMed” and “Scopus”. The references that were not open access, were accessed by “Portal CAPES”.

Authors’ contributions

All authors contributed equally to this work. All authors read and discussed the issues addressed in this review. TRM and ARJ also designed the figures.

Competing interests

The authors declare that they have no competing interests.

Consent for publication

Not applicable.

Ethics approval and consent to participate

Not applicable.

Author details

¹Department of Medicine, Molecular Biology Laboratory, University Hospital, Universidade Federal de Sergipe, São Cristóvão, Sergipe, Brazil. ²Infectious Disease Research Institute, Seattle, USA. ³Instituto de Investigação em Imunologia, Institutos Nacionais de Ciência e Tecnologia, CNPq, São Paulo, SP, Brazil.

Received: 16 May 2016 Accepted: 20 December 2016

Published online: 06 February 2017

References

- Global leprosy update, 2014: need for early case detection. *Wkly Epidemiol Rec.* 2015;90:461–74.

2. Bhat RM, Prakash C. Leprosy: an overview of pathophysiology. *Interdiscip Perspect Infect Dis.* 2012;2012:181089.
3. Lastoria JC, Abreu MA. Leprosy: review of the epidemiological, clinical, and etiopathogenic aspects—part 1. *An Bras Dermatol.* 2014;89:205–18.
4. Scollard DM, Adams LB, Gillis TP, Krahenbuhl JL, Truman RW, Williams DL. The continuing challenges of leprosy. *Clin Microbiol Rev.* 2006;19:338–81.
5. Bratschi MW, Steinmann P, Wickenden A, Gillis TP. Current knowledge on *Mycobacterium leprae* transmission: a systematic literature review. *Lepr Rev.* 2015;86:142–55.
6. Wheat WH, Casali AL, Thomas V, Spencer JS, Lahiri R, Williams DL, McDonnell GE, Gonzalez-Juarrero M, Brennan PJ, Jackson M. Long-term survival and virulence of *Mycobacterium leprae* in amoebal cysts. *PLoS Negl Trop Dis.* 2014;8:e3405.
7. Ridley DS, Jopling WH. Classification of leprosy according to immunity. A five-group system. *Int J Lepr Other Mycobact Dis.* 1966;34:255–73.
8. Ridley DS. Histological classification and the immunological spectrum of leprosy. *Bull World Health Organ.* 1974;51:451–65.
9. Rodrigues Junior IA, Gresta LT, Noviello Mde L, Cartelle CT, Lyon S, Arantes RM. Leprosy classification methods: a comparative study in a referral center in Brazil. *Int J Infect Dis.* 2016;45:118–22.
10. Scollard DM. The biology of nerve injury in leprosy. *Lepr Rev.* 2008;79:242–53.
11. van Veen NH, Nicholls PG, Smith WC, Richardus JH. Corticosteroids for treating nerve damage in leprosy. *A Cochrane review.* *Lepr Rev.* 2008;79:361–71.
12. Chemotherapy of leprosy. Report of a WHO Study Group. *World Health Organ Tech Rep Ser.* 1994;847:1–24.
13. Gaschnigard J, Grant AV, Thuc NV, Okhova M, Cobat A, Huong NT, Ba NN, Thai VH, Abel L, Schurr E, Alcais A. Pauci- and multibacillary leprosy: two distinct, genetically neglected diseases. *PLoS Negl Trop Dis.* 2016;10:e0004345.
14. Modlin RL. Learning from leprosy: insights into contemporary immunology from an ancient disease. *Skin Pharmacol Appl Skin Physiol.* 2002;15:1–6.
15. Salgame P, Yamamura M, Bloom BR, Modlin RL. Evidence for functional subsets of CD4+ and CD8+ T cells in human disease: lymphokine patterns in leprosy. *Chem Immunol.* 1992;54:44–59.
16. Cho SN, Cellona RV, Villahermosa LG, Fajardo Jr TT, Balagon MV, Abalos RM, Tan EV, Walsh GP, Kim JD, Brennan PJ. Detection of phenolic glycolipid I of *Mycobacterium leprae* in sera from leprosy patients before and after start of multidrug therapy. *Clin Diagn Lab Immunol.* 2001;8:138–42.
17. Towers TL, Freedman LP. Granulocyte-macrophage colony-stimulating factor gene transcription is directly repressed by the vitamin D3 receptor. Implications for allosteric influences on nuclear receptor structure and function by a DNA element. *J Biol Chem.* 1998;273:10338–48.
18. Yamamura M, Ueyemura K, Deans RJ, Weinberg K, Rea TH, Bloom BR, Modlin RL. Defining protective responses to pathogens: cytokine profiles in leprosy lesions. *Science.* 1991;254:277–9.
19. Yamamura M, Wang XH, Ohmen JD, Ueyemura K, Rea TH, Bloom BR, Modlin RL. Cytokine patterns of immunologically mediated tissue damage. *J Immunol.* 1992;149:1470–5.
20. Palermo ML, Pagliari C, Trindade MA, Yamashitafuji TM, Duarte AJ, Cacere CR, Benard G. Increased expression of regulatory T cells and down-regulatory molecules in lepromatous leprosy. *Am J Trop Med Hyg.* 2012;86:878–83.
21. Sadhu S, Khaitan BK, Joshi B, Sengupta U, Nautiyal AK, Mitra DK. Reciprocity between regulatory T cells and Th17 cells: relevance to polarized immunity in leprosy. *PLoS Negl Trop Dis.* 2016;10:e0004338.
22. Saini C, Siddiqui A, Ramesh V, Nath I. Leprosy reactions show increased Th17 cell activity and reduced FOXP3+ tregs with concomitant decrease in TGF-beta and increase in IL-6. *PLoS Negl Trop Dis.* 2016;10:e0004592.
23. Buhl T, Sulk M, Nowak P, Buddenkotte J, McDonald I, Aubert J, Carlavan I, Deret S, Reiniche P, Rivier M, et al. Molecular and morphological characterization of inflammatory infiltrate in rosacea reveals activation of Th1/Th17 pathways. *J Invest Dermatol.* 2015;135:2198–208.
24. Okada S, Markle JG, Deenick EK, Mele F, Averbuch D, Lagos M, Alzahrani M, Al-Muhsen S, Halwani R, Ma CS, et al. IMMUNODEFICIENCIES. Impairment of immunity to *Candida* and *Mycobacterium* in humans with bi-allelic RORC mutations. *Science.* 2015;349:606–13.
25. Jardim MR, Illarramendi X, Nascimento OJ, Nery JA, Sales AM, Sampaio EP, Sarno EN. Pure neural leprosy: steroids prevent neuropathy progression. *Arq Neuropsiquiatr.* 2007;65:969–73.
26. Krutzik SR, Ochoa MT, Sieling PA, Uematsu S, Ng YW, Legaspi A, Liu PT, Cole ST, Godowski PJ, Maeda Y, et al. Activation and regulation of Toll-like receptors 2 and 1 in human leprosy. *Nat Med.* 2003;9:525–32.
27. Krutzik SR, Tan B, Li H, Ochoa MT, Liu PT, Sharfstein SE, Graeber TG, Sieling PA, Liu YJ, Rea TH, et al. TLR activation triggers the rapid differentiation of monocytes into macrophages and dendritic cells. *Nat Med.* 2005;11:653–60.
28. Maeda Y, Mukai T, Spencer J, Makino M. Identification of an immunomodulating agent from *Mycobacterium leprae*. *Infect Immun.* 2005;73:2744–50.
29. Oliveira RB, Ochoa MT, Sieling PA, Rea TH, Rambukkana A, Sarno EN, Modlin RL. Expression of Toll-like receptor 2 on human Schwann cells: a mechanism of nerve damage in leprosy. *Infect Immun.* 2003;71:1427–33.
30. Modlin RL. The innate immune response in leprosy. *Curr Opin Immunol.* 2010;22:48–54.
31. Jullien D, Sieling PA, Ueyemura K, Mar ND, Rea TH, Modlin RL. IL-15, an immunomodulator of T cell responses in intracellular infection. *J Immunol.* 1997;158:800–6.
32. Penna GO, Pinheiro AM, Nogueira LS, Carvalho LR, Oliveira MB, Carreiro VP. Clinical and epidemiological study of leprosy cases in the University Hospital of Brasilia: 20 years—1985 to 2005. *Rev Soc Bras Med Trop.* 2008;41:575–80.
33. Bleharski JR, Li H, Meinken C, Graeber TG, Ochoa MT, Yamamura M, Burdick A, Sarno EN, Wagner M, Rollinghoff M, et al. Use of genetic profiling in leprosy to discriminate clinical forms of the disease. *Science.* 2003;301:1527–30.
34. Mosser DM, Edwards JP. Exploring the full spectrum of macrophage activation. *Nat Rev Immunol.* 2008;8:958–69.
35. Tripp CS, Beckerman KP, Unanue ER. Immune complexes inhibit antimicrobial responses through interleukin-10 production. Effects in severe combined immunodeficient mice during *Listeria* infection. *J Clin Invest.* 1995;95:1628–34.
36. Ratledge C, Dover LG. Iron metabolism in pathogenic bacteria. *Annu Rev Microbiol.* 2000;54:881–941.
37. Philippidis P, Mason JC, Evans BJ, Nadra I, Taylor KM, Haskard DO, Landis RC. Hemoglobin scavenger receptor CD163 mediates interleukin-10 release and heme oxygenase-1 synthesis: antiinflammatory monocyte-macrophage responses in vitro, in resolving skin blisters in vivo, and after cardiopulmonary bypass surgery. *Circ Res.* 2004;94:119–26.
38. Platt N, Suzuki H, Kurihara Y, Kodama T, Gordon S. Role for the class A macrophage scavenger receptor in the phagocytosis of apoptotic thymocytes in vitro. *Proc Natl Acad Sci U S A.* 1996;93:12456–60.
39. Kristiansen M, Graversen JH, Jacobsen C, Sonne O, Hoffman HJ, Law SK, Moestrup SK. Identification of the haemoglobin scavenger receptor. *Nature.* 2001;409:198–201.
40. Parthasarathy S, Fong LG, Otero D, Steinberg D. Recognition of solubilized apoproteins from delipidated, oxidized low density lipoprotein (LDL) by the acetyl-LDL receptor. *Proc Natl Acad Sci U S A.* 1987;84:537–40.
41. Terpstra V, Bird DA, Steinberg D. Evidence that the lipid moiety of oxidized low density lipoprotein plays a role in its interaction with macrophage receptors. *Proc Natl Acad Sci U S A.* 1998;95:1806–11.
42. Cruz D, Watson AD, Miller CS, Montoya D, Ochoa MT, Sieling PA, Gutierrez MA, Navab M, Reddy ST, Witztum JL, et al. Host-derived oxidized phospholipids and HDL regulate innate immunity in human leprosy. *J Clin Invest.* 2008;118:2917–28.
43. Job CK. *Mycobacterium leprae* in nerve lesions in lepromatous leprosy. An electron microscopic study. *Arch Pathol.* 1970;89:195–207.
44. Russell DG, Cardona PJ, Kim MJ, Allain S, Altare F. Foamy macrophages and the progression of the human tuberculosis granuloma. *Nat Immunol.* 2009;10:943–8.
45. Halvorsen B, Waehre T, Scholz H, Clausen OP, von der Thusen JH, Muller F, Heimli H, Tonstad S, Hall C, Froland SS, et al. Interleukin-10 enhances the oxidized LDL-induced foam cell formation of macrophages by antiapoptotic mechanisms. *J Lipid Res.* 2005;46:211–9.
46. de Mattos KA, Sarno EN, Pessolani MC, Bozza PT. Deciphering the contribution of lipid droplets in leprosy: multifunctional organelles with roles in *Mycobacterium leprae* pathogenesis. *Mem Inst Oswaldo Cruz.* 2012;107 Suppl 1:156–66.
47. Hirai KE, Aarao TL, Silva LM, de Sousa JR, de Souza J, Dias Jr LB, Carneiro FR, Fuzii HT, Quaresma JA. Langerhans cells (CD1a and CD207), dermal dendrocytes (FXIIIa) and plasmacytoid dendritic cells (CD123) in skin lesions of leprosy patients. *Microb Pathog.* 2016;91:18–25.
48. Simoes Quaresma JA, de Oliveira MF, Ribeiro Guimarães AC, de Brito EB, de Brito RB, Pagliari C, de Brito AC, Xavier MB, Seixas Duarte MI. CD1a and factor XIIIa immunohistochemistry in leprosy: a possible role of dendritic cells in the pathogenesis of *Mycobacterium leprae* infection. *Am J Dermatopathol.* 2009;31:527–31.

49. Massone C, Nunzi E, Ribeiro-Rodrigues R, Talhari C, Talhari S, Schettini AP, Parente JN, Brunasso AM, Puntoni M, Clapasson A, et al. T regulatory cells and plasmacytoid dendritic cells in Hansen disease: a new insight into pathogenesis? *Am J Dermatopathol*. 2010;32:251–6.
50. Massone C, Talhari C, Talhari S, Brunasso AM, Campbell TM, Curcic P, Cerroni L, Ribeiro-Rodrigues R. Immunophenotype of skin lymphocytic infiltrate in patients co-infected with *Mycobacterium leprae* and human immunodeficiency virus: a scenario dependent on CD8+ and/or CD20+ cells. *Br J Dermatol*. 2011;165:321–8.
51. Motta AC, Furini RB, Simao JC, Ferreira MA, Komesu MC, Foss NT. The recurrence of leprosy reactional episodes could be associated with oral chronic infections and expression of serum IL-1, TNF-alpha, IL-6, IFN-gamma and IL-10. *Braz Dent J*. 2010;21:158–64.
52. Scollard DM, Truman RW, Ebenezer GJ. Mechanisms of nerve injury in leprosy. *Clin Dermatol*. 2015;33:46–54.
53. Scollard DM, Joyce MP, Gillis TP. Development of leprosy and type 1 leprosy reactions after treatment with infliximab: a report of 2 cases. *Clin Infect Dis*. 2006;43:e19–22.
54. Misch EA, Berrington WR, Vary Jr JC, Hawn TR. Leprosy and the human genome. *Microbiol Mol Biol Rev*. 2010;74:589–620.
55. Lockwood DN, Vinayakumar S, Stanley JN, McAdam KP, Colston MJ. Clinical features and outcome of reversal (type 1) reactions in Hyderabad, India. *Int J Lepr Other Mycobact Dis*. 1993;61:8–15.
56. Ranque B, Nguyen VT, Vu HT, Nguyen TH, Nguyen NB, Pham XK, Schurr E, Abel L, Alcais A. Age is an important risk factor for onset and sequelae of reversal reactions in Vietnamese patients with leprosy. *Clin Infect Dis*. 2007;44:33–40.
57. Shen J, Liu M, Zhou M, Wengzhong L. Occurrence and management of leprosy reaction in China in 2005. *Lepr Rev*. 2009;80:164–9.
58. Triccas JA, Winter N, Roche PW, Gilpin A, Kendrick KE, Britton WJ. Molecular and immunological analyses of the *Mycobacterium avium* homolog of the immunodominant *Mycobacterium leprae* 35-kilodalton protein. *Infect Immun*. 1998;66:2684–90.
59. Kahawita IP, Lockwood DN. Towards understanding the pathology of erythema nodosum leprosum. *Trans R Soc Trop Med Hyg*. 2008;102:329–37.
60. Stefani MM, Martelli CM, Gillis TP, Krahenbuhl JL. In situ type 1 cytokine gene expression and mechanisms associated with early leprosy progression. *J Infect Dis*. 2003;188:1024–31.
61. Tung KS, Umland E, Matzner P, Nelson K, Schauf V, Rubin L, Wagner D, Scollard D, Vithayasai P, Vithayasai V, et al. Soluble serum interleukin 2 receptor levels in leprosy patients. *Clin Exp Immunol*. 1987;69:10–5.
62. Fava VM, Cobat A, Van Thuc N, Latini AC, Stefani MM, Belone AF, Ba NN, Orlova M, Manry J, Mira MT, et al. Association of TNFSF8 regulatory variants with excessive inflammatory responses but not leprosy per se. *J Infect Dis*. 2015;211:968–77.
63. Richard AC, Ferdinand JR, Meylan F, Hayes ET, Gabay O, Siegel RM. The TNF-family cytokine TL1A: from lymphocyte costimulator to disease co-conspirator. *J Leukoc Biol*. 2015;98:333–45.
64. Stefani MM, Guerra JG, Sousa AL, Costa MB, Oliveira ML, Martelli CT, Scollard DM. Potential plasma markers of Type 1 and Type 2 leprosy reactions: a preliminary report. *BMC Infect Dis*. 2009;9:75.
65. Aiba Y, Nakamura M. The role of TL1A and DR3 in autoimmune and inflammatory diseases. *Mediators Inflamm*. 2013;2013:258164.
66. Smith WC, Anderson AM, Withington SG, van Brakel WH, Croft RP, Nicholls PG, Richardus JH. Steroid prophylaxis for prevention of nerve function impairment in leprosy: randomised placebo controlled trial (TRIPOD 1). *BMJ*. 2004;328:1459.
67. Rieneck K, Diamant M, Haahr PM, Schonharting M, Bendtzen K. In vitro immunomodulatory effects of pentoxifylline. *Immunol Lett*. 1993;37:131–8.
68. Sarno EN, Grau GE, Vieira LM, Nery JA. Serum levels of tumour necrosis factor-alpha and interleukin-1 beta during leprosy reactional states. *Clin Exp Immunol*. 1991;84:103–8.
69. Sampaio EP, Kaplan G, Miranda A, Nery JA, Miguel CP, Viana SM, Sarno EN. The influence of thalidomide on the clinical and immunologic manifestation of erythema nodosum leprosum. *J Infect Dis*. 1993;168:408–14.
70. Barnes PF, Chatterjee D, Brennan PJ, Rea TH, Modlin RL. Tumor necrosis factor production in patients with leprosy. *Infect Immun*. 1992;60:1441–6.
71. Fleischmann RD, Alland D, Eisen JA, Carpenter L, White O, Peterson J, DeBoy R, Dodson R, Gwinn M, Haft D, et al. Whole-genome comparison of *Mycobacterium tuberculosis* clinical and laboratory strains. *J Bacteriol*. 2002;184:5479–90.
72. Moraes MO, Sarno EN, Almeida AS, Saraiva BC, Nery JA, Martins RC, Sampaio EP. Cytokine mRNA expression in leprosy: a possible role for interferon-gamma and interleukin-12 in reactions (RR and ENL). *Scand J Immunol*. 1999;50:541–9.
73. Belgaumkar VA, Gokhale NR, Mahajan PM, Bharadwaj R, Pandit DP, Deshpande S. Circulating cytokine profiles in leprosy patients. *Lepr Rev*. 2007;78:223–30.
74. Kaplan G, Britton WJ, Hancock GE, Theuvenet WJ, Smith KA, Job CK, Roche PW, Molloy A, Burkhardt R, Barker J, et al. The systemic influence of recombinant interleukin 2 on the manifestations of lepromatous leprosy. *J Exp Med*. 1991;173:993–1006.
75. Vieira AP, Trindade MA, Pagliari C, Avancini J, Sakai-Valente NY, Duarte AJ, Benard G. Development of type 2, but not type 1, leprosy reactions is associated with a severe reduction of circulating and in situ regulatory T-cells. *Am J Trop Med Hyg*. 2016;94:721–7.
76. Khadge S, Banu S, Bobosha K, van der Ploeg-van Schip JJ, Goulart IM, Thapa P, Kunwar CB, van Meijgaarden KE, van den Eeden SJ, Wilson L, et al. Longitudinal immune profiles in type 1 leprosy reactions in Bangladesh, Brazil, Ethiopia and Nepal. *BMC Infect Dis*. 2015;15:477.
77. Partida-Sanchez S, Favila-Castillo L, Pedraza-Sanchez S, Gomez-Melgar M, Saul A, Estrada-Parra S, Estrada-Garcia I. IgG antibody subclasses, tumor necrosis factor and IFN-gamma levels in patients with type II lepra reaction on thalidomide treatment. *Int Arch Allergy Immunol*. 1998;116:60–6.
78. Hagge DA, Saunders BM, Ebenezer GJ, Ray NA, Marks VT, Britton WJ, Krahenbuhl JL, Adams LB. Lymphotoxin-alpha and TNF have essential but independent roles in the evolution of the granulomatous response in experimental leprosy. *Am J Pathol*. 2009;174:1379–89.
79. Job CK. Pathology of peripheral nerve lesions in lepromatous leprosy—a light and electron microscopic study. *Int J Lepr Other Mycobact Dis*. 1971;39:251–68.
80. Job CK. Nerve damage in leprosy. *Int J Lepr Other Mycobact Dis*. 1989;57:532–9.
81. Ng V, Zanazzi G, Timpl R, Talts JF, Salzer JL, Brennan PJ, Rambukkana A. Role of the cell wall phenolic glycolipid-1 in the peripheral nerve predilection of *Mycobacterium leprae*. *Cell*. 2000;103:511–24.
82. Rambukkana A, Salzer JL, Yurchenco PD, Tuomanen EI. Neural targeting of *Mycobacterium leprae* mediated by the G domain of the laminin-alpha2 chain. *Cell*. 1997;88:811–21.
83. Rambukkana A. Molecular basis for the peripheral nerve predilection of *Mycobacterium leprae*. *Curr Opin Microbiol*. 2001;4:21–7.

Submit your next manuscript to BioMed Central and we will help you at every step:

- We accept pre-submission inquiries
- Our selector tool helps you to find the most relevant journal
- We provide round the clock customer support
- Convenient online submission
- Thorough peer review
- Inclusion in PubMed and all major indexing services
- Maximum visibility for your research

Submit your manuscript at
www.biomedcentral.com/submit

