

RESEARCH ARTICLE

Open Access

Mycophenolic acid counteracts B cell proliferation and plasmablast formation in patients with systemic lupus erythematosus

Sebastian Eickenberg^{1,2}, Eva Mickholz^{1,2}, Elisabeth Jung^{1,2}, Jerzy-Roch Nofer³, Herrmann Pavenstädt² and Annett M Jacobi^{1,2*}

Abstract

Introduction: Clinical trials revealed a high efficacy of mycophenolate mofetil (MMF) in inducing and maintaining remission in patients with class III-V-lupus nephritis. Also extrarenal manifestations respond to MMF treatment. However, few attempts have been undertaken to delineate its mechanism of action in systemic lupus erythematosus (SLE) a disease characterized by enhanced B cell activation.

Methods: Clinical and paraclinical parameters of 107 patients with SLE were recorded consecutively and analyzed retrospectively. Patients were divided into treatment groups (MMF: n = 39, azathioprine (AZA) n = 30 and controls without immunosuppressive therapy n = 38). To further delineate the effect of mycophenolic acid (MPA) on naive and memory B cells *in vitro* assays were performed.

Results: Although patients taking AZA flared more frequently than patients on MMF or controls, the analysis of clinical parameters did not reveal significant differences. However, profound differences in paraclinical parameters were found. B cell frequencies and numbers were significantly higher in patients taking MMF compared to those on AZA but lower numbers and frequencies of plasmablasts were detected compared to AZA-treated patients or controls. Notably, MMF treatment was associated with a significantly higher frequency and number of transitional B cells as well as naive B cells compared to AZA treatment. Differences in T cell subsets were not significant. MPA abrogated *in vitro* proliferation of purified B cells completely but had only moderate impact on B cell survival.

Conclusions: The thorough inhibition of B cell activation and plasma cell formation by MMF might explain the favorable outcomes of previous clinical trials in patients with SLE, since enhanced B cell proliferation is a hallmark of this disease.

Introduction

Systemic lupus erythematosus (SLE) is characterized by enhanced B cell proliferation and formation of antibody secreting cells (ASCs), therefore innovative therapeutic strategies target those cells. However selective targeting is a goal not always met. Memory B cells and ASCs have been shown to be less sensitive to cyclophosphamide [1] or belimumab [2] than antigen-naïve B cell subsets. In addition, it has been demonstrated that rituximab [3] and cyclophosphamide [4] spare long-lived plasma cells. Very

little is known about the impact of other drugs used to treat or to prevent lupus flares on certain B cell subsets. Mycophenolate mofetil (MMF) is a drug used as a standard treatment especially in patients with lupus nephritis. It is as effective as cyclophosphamide in inducing remission [5], and in the long run even more effective than azathioprine (AZA) in maintaining remission of lupus nephritis [6]. Furthermore, side effects, such as cytopenia or infertility are less frequently observed in patients treated with MMF compared to cyclophosphamide [7].

Although the efficacy and safety of MMF have been thoroughly investigated in patients with severe SLE [5,8-10], the impact of MMF on B cell aberrations identified in lupus patients at a time before B-cell depletion

* Correspondence: annett.jacobi@ukmuenster.de

¹Rheumatology and Clinical Immunology Unit of the Department of Internal Medicine D, University Hospital Münster, Albert Schweitzer Str. 33, 48149 Münster, Germany

Full list of author information is available at the end of the article

came into fashion [11,12] has not yet been specifically addressed.

MMF is a pro-drug of mycophenolic acid (MPA). MPA reversibly inhibits inosine monophosphate dehydrogenase (IMPDH). MPA preferentially inhibits type-II-IMPDH that is upregulated in activated lymphocytes [13-15]. MMF was approved to prevent rejection in kidney allograft recipients in 1995 [16], but it is increasingly used in patients with autoimmune diseases because of a relatively high benefit-risk ratio. Since activated lymphocytes depend on type-II-IMPDH, MPA can theoretically selectively target these cells mediated by a depletion of the guanosine pool and deoxyguanosine triphosphate levels, resulting in cell cycle arrest. This might reduce the probability of side effects as compared to cytotoxic or other anti-proliferative drugs such as cyclophosphamide or AZA [17].

However, recent studies have revealed an impact of MPA on dendritic cells (DCs). Decreased surface expression of co-stimulatory molecules and a modification of DC/T cell interaction have been reported [18-20]. Those might contribute to its positive effects in preventing allograft rejection or nephritis flares. Furthermore, MPA might show alternate modes of action besides mere guanine nucleotide deprivation. In this context, signal transducer and activator of transcription 3 (STAT3) phosphorylation that has been shown to be required for memory B cell and ASC formation [21,22] seems to be impaired by MPA in myeloma cells [23]. Also IL-2-induced STAT5 phosphorylation is altered in MPA-treated CD3/CD28-activated T cells [24].

Although, there are almost no data available on the effect of MMF on lupus-specific alterations of DC or lymphocyte subsets, the effect of MMF on autoimmune mouse strains, such as MRL/lpr/lpr and NZB/W mice, has been studied thoroughly. An improvement of lupus-related findings is observed when mice are exposed to MMF [25-29]. MRL/lpr mice are characterized by enhanced B cell proliferation and extrafollicular differentiation of ASCs [30]. IL-21 has been shown to promote GC-derived [31] and extrafollicular [32] B cell proliferation and might therefore contribute to the generation of self-reactive ASCs in autoimmune mouse strains such as MRL/lpr mice. Therefore, we chose IL-21 to perform functional assays.

Combining observational data obtained by monitoring patients with SLE, and results of selected functional assays, this work develops an idea of how profoundly MPA acts in patients with SLE. It suggests modes of action that are advantageous especially in lupus patients.

Materials and methods

Patients

Data were obtained from outpatients attending a lupus clinic that was started in January 2010 as a joint initiative of nephrologists and rheumatologists at Münster

University Hospital. All patients underwent standard laboratory tests allowing an assessment of disease activity as well as the safety of their current therapeutic regimen. These tests include all routine diagnostic procedures and established biomarkers, allowing an assessment of disease activity, and the patient stratification needed to decide on the most suitable therapeutic approach. Although no trial was planned, a characteristic pattern of B cell subsets became apparent in patients on MMF. A retrospective analysis of clinical, serological and cellular parameters was performed to compare patients taking MMF with patients taking AZA, and patients not taking immunosuppressive treatment. Ethical approval and informed consent for monitoring as well as retrospective data analysis were waived by the local ethics committee. All patients attending the clinic within its first year were included in this analysis, provided they had been taking their current medication for at least six months. Patients treated with rituximab at any time were excluded, since it causes a sustained alteration of B cell subsets.

Patients were between 18 and 72 years old (mean \pm SD, 37.7 ± 12.8), mainly female (85.3%), and fulfilled the American College of Rheumatology (ACR) criteria for classification of SLE [33,34]. Regarding immunosuppressive therapy, three groups of patients were distinguished, namely patients taking AZA ($n = 30$) or MMF ($n = 39$), or not taking any immunosuppressive drugs ($n = 38$). All three groups comprised patients suffering flares as well as patients in remission. Disease activity, individual autoantibody profiles, and organ involvement were recorded. Given the current situation of off-label prescription of MMF in patients with SLE, patients taking MMF were slightly younger than the remaining patients (MMF, mean 34.7 ± 11.2 vs. AZA, 38.2 ± 13.3 years, or vs. no immunosuppressive therapy, 40.4 ± 13.5 years). Half the patients taking MMF had been receiving it as induction or maintenance therapy for lupus nephritis since adolescence, initially prescribed by their pediatricians. The remaining patients on MMF had AZA-refractory disease or contraindications to receiving cyclophosphamide or AZA. Table 1 gives an overview of the patient characteristics.

Flow cytometric analysis of peripheral blood lymphocyte subsets

Flow cytometric analysis of peripheral blood mononuclear cells (PBMC) is a procedure performed routinely in addition to differential blood count in patients undergoing immunosuppressive therapy. From 3 ml of heparinized blood PBMCs were isolated by density gradient centrifugation using Ficoll-Paque™ Plus from GE Healthcare (Munich, Germany), were washed in PBS/0.5% BSA (Sigma-Aldrich, St. Gallen, Switzerland) and stained immediately with fluorochrome-labeled monoclonal antibodies to a panel of different surface antigens to

Table 1 Summary of additional medication, clinical and serologic characteristics of the analyzed lupus patients

	AZA		MMF		No IS	
	n = 30	%	n = 39	%	n = 38	%
Medication^a						
Prednisone	26	87	38	97	14	37
mg/day, median (range)	5.0 (0-50) ^{§§§}		5.0 (0-30) ^{###}		0 (0-20) ^{§§§ ###}	
Hydroxychloroquine	17	57	26	67	29	76
Manifestations^a						
Nephritis	20	67	35	90	13	34
Proliferative class III, IV of all biopsy results available	12	75	22	76	3	38
CRF grade III+	5	25	6	17	1	8
Nephritis in remission	9	45	20	57	7	58
Active nephritis	11	55	15	43	6	46
New nephritis	1	5	0	0	6	46
Arthritis	3	10	2	5	9	24
Serositis	1	3	0	0	4	11
Myositis	2	7	1	3	0	0
CNS	1	3	0	0	1	3
Vasculitis	1	3	1	3	1	3
Flares^a						
Lupus nephritis flare	10	71	4	44	6	50
CNS flare	0	0	0	0	1	3
Arthritis flare	0	0	2	22	5	42
Serositis flare	2	14	0	0	3	8
Myositis flare	1	7	1	11	0	0
Vasculitis flare	0	0	1	11	0	0
Ref. thrombocytopenia	0	0	1	11	0	0
ILD flare	1	7	0	0	0	0
Autoantibodies^a						
Anti-dsDNA	27	90	36	92	28	74
C _{median} , U/ml (range)	39 (0-1,250)		29 (0-1,065)		32 (0-1,496)	
Anti-Ro	17	57	16	41	24	65
Anti-La	8	27	6	15	10	27
Anti-U1RNP	11	37	14	36	20	54
Anti-SM	6	20	6	15	8	22
APLA/LA	10	33	14	38 ^b	9	28 ^b
Consumption of complement factors^a						
	15	50	16	41	15	39
SLEDAI						
Median (range)	6 (0-18)		4 (0-14)		4 (0-24)	

Results are presented as number and percent of patients unless otherwise stated. ^aResulting in an intensification of the immunosuppressive therapy (> 50mg prednisone-equivalent added, or switch of the therapy regimen to a more potent regimen, such as cyclophosphamide). AZA, azathioprine; MMF, mycophenolate mophetil; IS, immunosuppression; CRF, chronic renal failure; CNS, central nervous system; ILD, interstitial lung disease; APLA, anti-phospholipid antibodies; LA, lupus anticoagulant; SLEDAI, SLE disease activity index. ^bData incomplete (antibody status known in 37 and 32 patients respectively). Statistically significant differences detected between the dose of prednisone-equivalent, Dunn's Multiple Comparison test: [#]*P* < 0.05, ^{##}*P* < 0.01, ^{###}*P* < 0.001 statistically significant differences between patients taking MMF compared to patients without immunosuppressive therapy (no IS). [§]*P* < 0.05, ^{§§}*P* < 0.01, ^{§§§}*P* < 0.001 for statistically significant differences between patients taking AZA compared to patients without immunosuppressive therapy.

discriminate B and T cell subsets (see Additional file 1). All samples were processed and analyzed within 6 hours after collection to ensure viability of all cell subsets. To exclude dead cells a final concentration of 220 nM 4',6-

diamidino-2-phenylindole (DAPI) (Invitrogen, Carlsbad, CA, USA) was used. A FACS Canto-II and FACS Diva Software (Becton Dickinson, (BD), San Jose, CA, USA) were used for 12-parameter (8-color) flow cytometric

analysis. One million events were recorded for B cell and 500,000 events for T cell analysis. Results were analyzed using FlowJo (Treestar, Ashland, OR, USA).

Lymphocyte counts were recorded and absolute numbers were calculated using the frequencies of T and B cells based on the lymphocyte gate and the lymphocyte count. Differential blood counts and all other lab values including autoantibody titers were determined in the central laboratory using accredited diagnostic procedures [35].

Isolation of B cell subsets for functional analysis

Naïve and memory B cells from blood donors (leukocyte filters) were isolated in a multistep procedure. The use of leukocyte filters from healthy blood donors for *in vitro* assays was approved by the local ethics committee. First the filter content was incubated with RosetteSep B Cell Enrichment Cocktail (STEMCELL Technologies SARL, Grenoble, France) according to the manufacturer's instructions, and density gradient centrifugation was performed. Isolated B cells were then labeled with anti-CD27-magnetic beads (Miltenyi Biotec, Bergisch Gladbach, Germany) and CD27⁺ memory B cells were positively selected using a magnetic column and the Miltenyi Biotec protocol. Subsequently the remaining B cells were labeled with biotin-labeled anti-IgD antibody (IA6-2, BD, Bioscience, Franklin Lakes, NJ, USA). After washing cells twice with PBS/0.5% BSA, streptavidin-labeled magnetic beads (Miltenyi Biotec) were used for positive selection of CD27⁻IgD⁺ naïve B cells on a second column.

Flow cytometric analysis after magnetic activated cell sorting (MACS) confirmed that CD3⁺ T cells were depleted completely from the CD27⁺ subset.

Proliferation assay

Naïve and memory B cells were obtained as described above and subsequently stained with carboxyfluorescein-succinimidyl-ester (CFSE, Invitrogen) according to the manufacturers' instructions. CFSE-labeled cells were then incubated at a concentration of 10⁵/ml in RPMI 1640 (GIBCO, Invitrogen) supplemented with 10% v/v FCS, penicillin (100 U/ml) and streptomycin (100 mg/ml) (all Invitrogen) on a 96-well round-bottom plate (Greiner Bio-One, Kremsmuenster, Austria) with CpG oligodeoxynucleotide 2006, sequence: 5'-TsCsg sTsCsg sTsTsT sTsTsT sCsTsT sTsTsT sTsTsT sTsTsT-3' 2.5 µg/ml (TIB MolBiol, Berlin, Germany) or 0.5 µg/ml of a monoclonal anti-CD40 antibody (MAB89 (Beckmann Coulter, Eurocenter S.A., Nyon, Switzerland) and 50 ng/ml of IL-21 (GIBCO, Invitrogen) with or without 5 µM of MPA (Sigma-Aldrich). Four days later, cells were harvested, washed with PBS, and stained with monoclonal antibodies (see Additional file 1) in a 96-well v-bottom plate (Brand, Wertheim, Germany). Proliferation assays were performed in doublets

using peripheral B cell subsets from four healthy blood donors. Flow cytometric analysis and data processing were performed as described.

Determination of STAT3 phosphorylation by phospho-flow cytometry

PBMC were isolated by density gradient centrifugation and incubated with 5 µM MPA, or without MPA, for 24 hours in RPMI1640 supplemented with 10%v/v FCS, penicillin (100 U/ml) and streptomycin (100 mg/ml). Subsequently cells were stimulated with IL-21 (50 ng/ml) for 15 minutes at 37°C and fixed in 1.5% formaldehyde (ROCKLAND Gilbertsville, PA, USA) for 10 minutes at room temperature. Afterwards PBMC were washed in PBS/0.5% BSA and stained with fluorescence-labeled monoclonal antibodies to a panel of different surface antigens to allow the discrimination of B and T cell subsets (see Additional file 1). After another washing step, cells were incubated with methanol (ice-cooled, 100%, Riedel-Haen AG, Seelze, Germany) for 10 minutes at 4°C followed by two more wash steps. Next intracellular labeling of pSTAT3 was performed incubating cells with a monoclonal antibody (see Additional file 1) for 30 minutes at 4°C. All samples were acquired immediately after two more wash steps using a FACS Canto-II equipped with FACS Diva Software (BD) and data were subsequently analyzed using FlowJo software (Treestar). One million events were recorded.

Statistical analysis

Frequencies of lymphocyte subsets analyzed *ex vivo* or *in vitro* were calculated using FlowJo software (TreeStar). Differences in frequencies or numbers of certain cell subsets were determined using the Kruskal-Wallis test and Dunn's multiple comparison test, since the majority of data were not normally distributed. Except for age (presented as mean ± SD), median values with the range are shown. The Chi-square test was used to determine if organ involvement, co-medications or disease flares were significantly over-, or under-represented in any of the patient cohorts. The Wilcoxon matched-pairs signed rank test was performed to compare *in vitro* cell survival with and without MPA. *P*-values < 0.05 were considered statistically significant. Data were analyzed using GraphPad Prism5 (GraphPad, San Diego, CA, USA).

Results

Clinical aspects

Although AZA- and MMF-treated patients had not been randomized for important parameters such as disease activity, prednisone-equivalent dose, disease manifestations or autoantibody profile, there were no significant differences in the occurrence of any parameter analyzed as shown in Table 1.

Disease flares requiring intensification of the current treatment regimen by increasing the prednisone-equivalent dose to > 50 mg/day and/or the dose, or type of immunosuppressant, were observed more often in patients taking AZA (47%) compared to MMF-treated patients (23%). Organ involvement observed during flares is shown in Table 1.

Effect of AZA and MMF on peripheral blood lymphocytes

Differential blood counts and flow cytometric data were analyzed to estimate and compare the effect of AZA and MMF on cellular parameters. A summary of cell counts is shown in Table 2. Although patients without immunosuppressive treatment had higher T cell numbers than patients treated with MMF or AZA, no significant differences were observed. T cell subset analysis did not reveal significant differences between AZA- and MMF-treated patients and patients without immunosuppressive therapy. However, when B cell subsets were compared, a couple of significant differences were identified. Performance and results of the B cell subset analysis are shown in Figures 1, 2, 3.

Although patients on AZA had significantly lower B cell counts compared to untreated patients or patients taking MMF ($P = 0.0001$) (Table 2), CD27^{high}CD38^{high} ASCs were found at a significantly higher frequency and similar number in the peripheral blood of these patients compared to patients without immunosuppressive therapy (data not shown). Importantly, patients taking MMF had significantly lower frequencies and numbers of ASCs in the peripheral blood compared to AZA-treated patients, or patients without immunosuppressive therapy ($P < 0.0001$ respectively) (data not shown).

In order to analyze if the impact of MMF on the ASC subset is restricted to recently produced HLA-DR^{high}

plasmablasts that usually represent the vast majority of the CD27^{high}CD38^{high} ASC subset in patients with flaring lupus, peripheral HLA-DR^{low} ASC and HLA-DR^{high} ASC were determined and compared (Figure 2). Although the absolute number of HLA-DR^{low} ASC was significantly lower in patients on MMF ($P = 0.017$, Figure 2B), this deviation was moderate compared to the marked difference of HLA-DR^{high} ASC counts or frequencies observed between patient groups ($P < 0.0001$, Figure 2A). Therefore, MMF treatment was primarily associated with decreased frequencies and numbers of HLA-DR^{high} ASC in the peripheral blood of lupus patients.

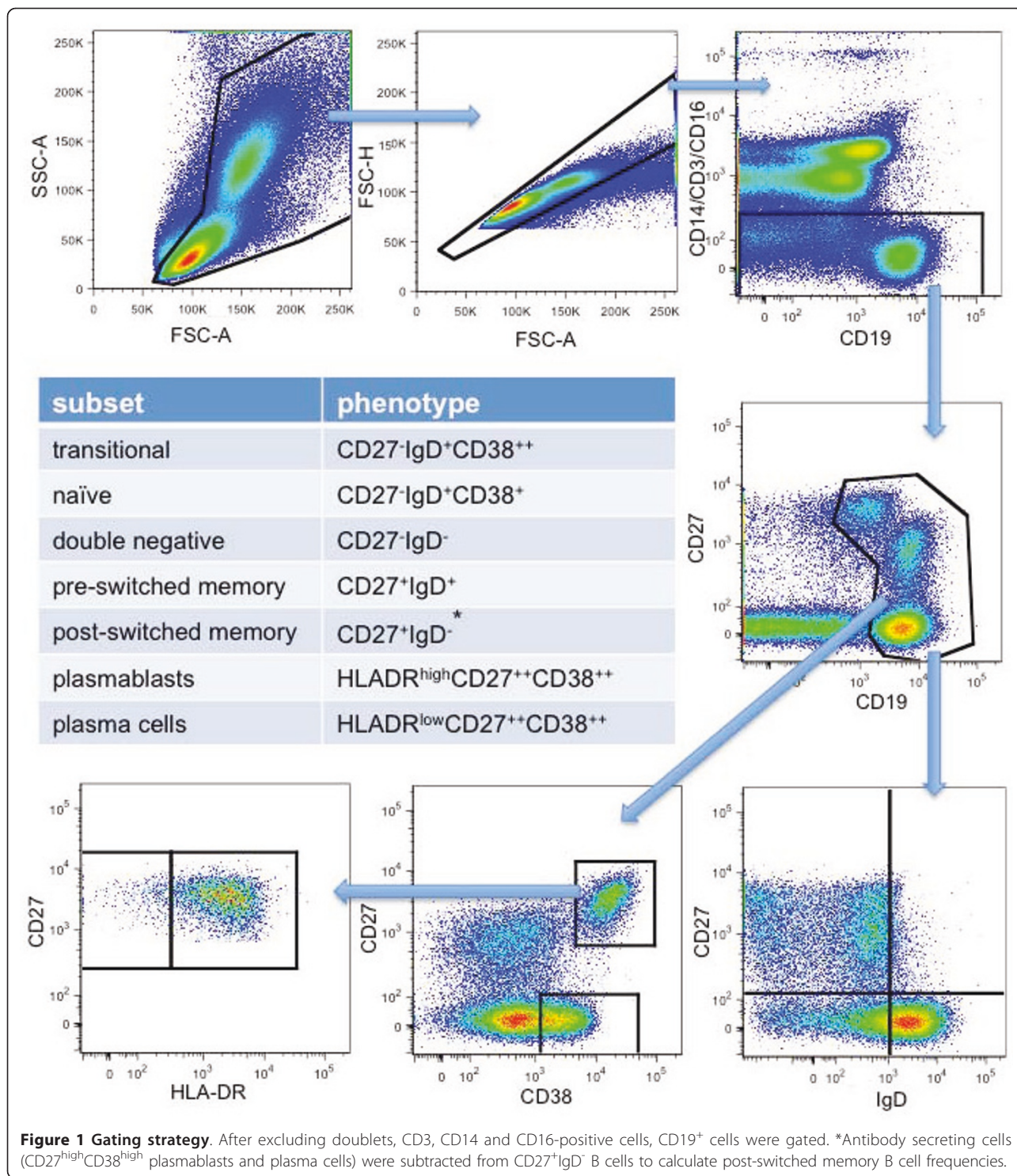
Frequencies and numbers of CD27⁺IgD⁺CD38⁺⁺ transitional B cells were significantly lower in patients taking AZA compared to MMF-treated patients, or patients without immunosuppressive therapy ($P < 0.0001$, Figure 3A). In addition, frequencies and numbers of CD27⁺IgD⁺CD38⁺ mature naïve B cells were significantly lower in patients taking AZA compared to MMF-treated patients, or patients without immunosuppressive therapy ($P = 0.0001$ and $P < 0.0001$, respectively, Figure 3B).

In contrast, memory B cell analyses revealed no difference, or less pronounced differences, between patient groups (Figures 3C and 3D). Median frequencies of CD27⁻IgD⁻ B cells (heterogeneous subset also containing memory B cells [36]) were comparably high in patients on MMF (16.2%, range 5.7 to 41.7%), AZA (17.7%, 7.7 to 36.1%) and patients not on immunosuppressive drugs (17.0%, 4.0 to 33.0%) (data not shown). Also median frequencies of CD27⁺IgD⁺ pre-switched memory B cells did not differ (Figure 3C). The median frequencies of CD27⁺IgD⁻ post-switched memory B cells were comparably high in patients on MMF and patients not on immunosuppressive drugs, whereas AZA-treated patients had significantly higher frequencies of post-

Table 2 Summary of all cell counts recorded

	AZA	MMF	No IS
Hemoglobin, mmol/l	7.9 (5.5-10.4)	8.2 (5.4-10.7)	8.2 (4.5-10.7)
Platelets/ μ l	238 (48-459)	252 (136-404)	223 (96-379)
Leukocytes	4855 (2,060-10,160)	5970 (2,640-15,550)	5225 (2,080-9,050)
Lymphocytes/ μ l	987 (200-3,790)	1080 (360-3,010)	1330 (300-2,910)
B cells %	4.5 (0.6-31.3)* ^{§§§}	9.4 (0.6-40.1)*	11.8 (3.6-28.9) ^{§§§}
B cells/ μ l	44(3-662)** ^{§§§}	113(4-462)**	119 (40-460) ^{§§§}
T % of L	76 (28-93)*	63 (24-85)*	64 (42,2-84,5)
T/ μ l	584 (180-3,286)	640 (89-2,468)	807 (162-2,104)
CD4 ⁺ %	73 (39-82)	71 (41-92)	69 (33-92)
CD4 ⁺ / μ l	430 (85-1,709)	466 (61-2,021)	518 (106-1,514)
CD8 ⁺ %	19 (7-46)	22 (3-48)	22 (2-60)
CD8 ⁺ / μ l	127 (25-1,410)	144 (12-696)	207 (19-604)
CD4 ⁻ /CD8 ⁻ %	6 (2-18)	6 (2-11)	5 (2-20)
CD4 ⁻ /CD8 ⁻ / μ l	41 (8-136)	41 (2-139)	46 (4-137)

Results are presented as median (range). Statistically significant differences detected between cell counts of patients taking azathioprine (AZA) and mycophenolate mofetil (MMF) (* $P < 0.05$, ** $P < 0.01$, *** $P < 0.001$) and AZA compared to patients not taking immunosuppressive therapy [§] $P < 0.05$, ^{§§} $P < 0.01$, ^{§§§} $P < 0.001$ (Dunn's multiple comparison test).



switched memory B cells ($P = 0.0003$). This comparative increase was caused by a lack of antigen-naïve B cells observed in AZA-treated patients. However, absolute numbers of post-switched memory B cells were comparably high in all patients (Figure 3D).

Effect of MMF on IgG levels

Consistent with the results of B cell subset analysis and dsDNA antibody levels, patients taking MMF had significantly lower IgG levels compared to patients taking AZA, or patients not on immunosuppressive drugs ($P = 0.0005$,

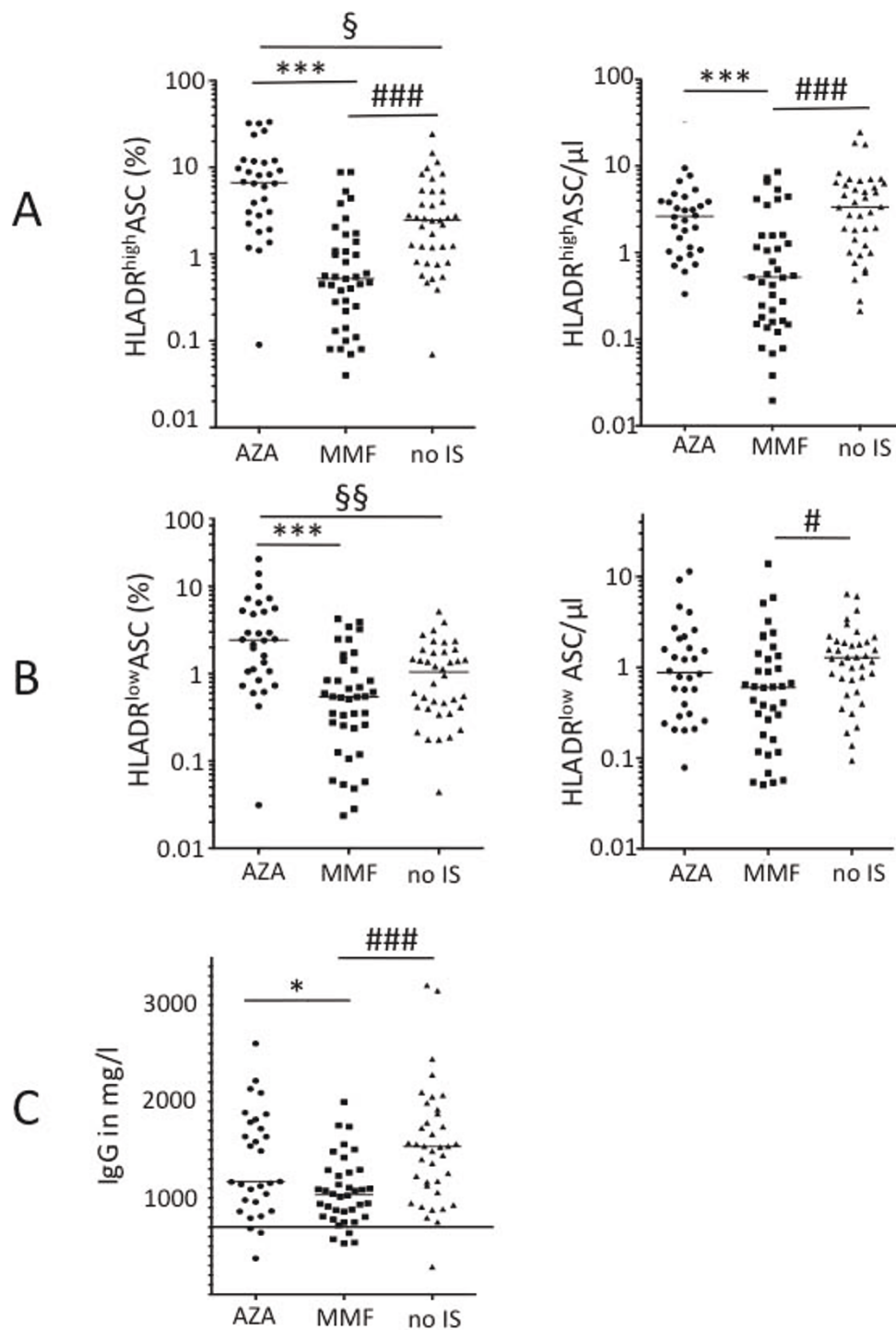


Figure 2 Frequencies and absolute numbers of ASC subsets and IgG serum levels. (A) Frequencies and numbers of HLADR^{high} antibody-secreting cells (ASC) were significantly lower in systemic lupus erythematosus (SLE) patients taking mycophenolate mofetil (MMF) compared to patients on azathioprine (AZA) and patients without immunosuppressive medication (no IS). (B) The absolute number of HLADR^{low} ASC was significantly lower in patients on MMF compared to patients without immunosuppressive therapy, whereas the frequency was not. (C) IgG serum levels (in mg/dl) were also significantly lower in patients taking MMF compared to patients on AZA or without IS. Lower limit of normal range is marked. Median values are shown: statistically significant differences were detected comparing patients on AZA and MMF (* $P < 0.05$, ** $P < 0.01$, *** $P < 0.001$) or patients on AZA (§ $P < 0.5$, §§ $P < 0.01$, §§§ $P < 0.001$) or patients on MMF (# $P < 0.05$, ## $P < 0.01$, §§§ $P < 0.001$) to patients without immunosuppressive therapy (Dunn's multiple comparison test).

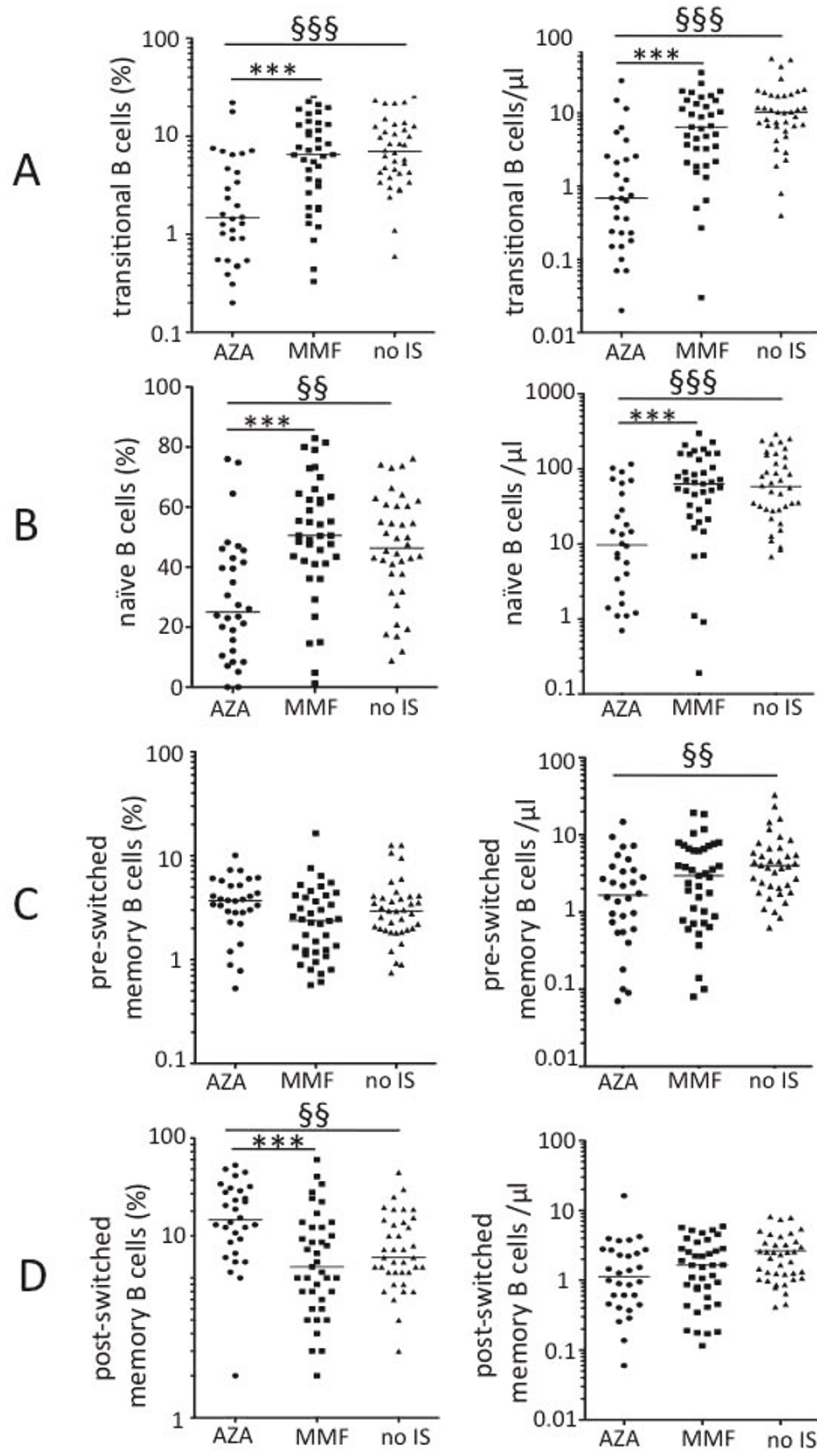


Figure 3 Frequencies and absolute numbers of B cell subsets. Frequencies and numbers of CD27⁺IgD⁺CD38⁺⁺ transitional (A) and CD27⁺IgD⁺CD38⁺ naïve B cells (B) were significantly lower in patients taking azathioprine (AZA) compared to mycophenolate mofetil (MMF)-treated patients or patients not taking immunosuppressive therapy (no IS). Absolute numbers of CD27⁺IgD⁺ pre-switched memory B cells (C) were significantly lower in patients taking AZA compared to patients without IS. However, absolute numbers of CD27⁺IgD⁻ post-switched memory B cells did not differ significantly (D). Patients taking AZA had the highest, and patients taking MMF the lowest frequency of CD27⁺IgD⁻ post-switched memory B cells (D). Median values are shown: statistically significant differences were detected comparing patients on AZA and MMF (**P* < 0.05, ***P* < 0.01, ****P* < 0.001) or patients on AZA (§*P* < 0.5, §§*P* < 0.01, §§§*P* < 0.001) or patients on MMF (#*P* < 0.05, ##*P* < 0.01, ###*P* < 0.001) to patients without immunosuppressive therapy (Dunn's multiple comparison test).

Figure 2C). Notably, no significant difference was found between the serum IgG levels of patients on AZA and patients not taking immunosuppressive drugs (Figure 2C). However the percentage of patients below the normal range was comparable in AZA- and MMF-treated patients (both 10.3%).

***In vitro* B cell proliferation and differentiation of ASCs are abolished completely by MPA**

B cell proliferation assays were performed as described to investigate if the impact of MMF on B cell activation and generation of ASCs that we postulated in patients with lupus, was indirect or direct. The MPA concentration that was used in all functional assays had been chosen considering previous work, and the approximate plasma concentration reached by daily intake of 2-3 g MMF [37].

Proliferation assays of purified CD27⁺IgD⁺ antigen-naïve and CD27⁺ memory B cell subsets from the peripheral blood of four healthy blood donors were performed. All individuals showed a comparable pattern of proliferation and a representative example is shown (Figure 4). In all assays MPA was able to abolish B cell proliferation and differentiation of ASCs completely, no matter if it was caused by TLR-mediated stimulation using CpG, or by CD40-antibodies in combination with IL-21, suggesting that the impact of MMF on B-cell activation and proliferation is not only related to impaired T cell help. In contrast to calcineurin inhibitors [38], MMF inhibits B cell activation and differentiation of ASCs directly.

While proliferation and formation of ASCs were abolished completely, the survival of non-stimulated B cells was only partially impaired by 5 μ M MPA after 4 days of culture (Figure 4). Comparing cell survival in cultures incubated with and without MPA it was reduced to a median value of 52.4% for antigen-naïve (range 34.9 to 67.8, $P = 0.125$) and 76.4% for CD27⁺ memory B cells (range 51.1 to 82.3, $P = 0.125$ (data not shown).

MPA does not affect STAT3 phosphorylation in antigen-naïve or CD27⁺ memory B cells

To rule out additional effects of MMF on mechanisms that are important for B cell proliferation and ASC formation we also analyzed STAT3 phosphorylation. STAT3 signal transduction is required to form memory B cells and ASCs [21,22]. It is essential for humoral immune responses. Phosphorylation of STAT3 has been shown to be impaired in myeloma cells after incubation with MPA [23]. Therefore, we decided to investigate the impact of MPA on IL-21-induced STAT3 phosphorylation in antigen-naïve and CD27⁺ memory B cells from the peripheral blood of healthy individuals. As shown in Figure 5, a 24-hour pre-incubation with 5 μ M MPA did not impact STAT3 phosphorylation detected after exposure of CD27⁺IgD⁺ antigen-naïve or CD27⁺ memory B cells to IL-21.

Discussion

Treatment of lupus patients with MMF causes an improvement of symptoms as well as normalization of paraclinical aberrations, such as increased peripheral plasmablast counts or hypergammaglobulinemia. Its preferential effect on B cell activation, proliferation and plasma cell generation is most welcome in patients with SLE and seems to be associated with high therapeutic efficacy combined with favorable safety. While controlled clinical trials have recently demonstrated the latter, this study focused on paraclinical aspects. Combining observational data and results obtained by performing selected functional assays it suggests modes of action that are especially advantageous in lupus, a disease characterized by enhanced B cell activation and proliferation, as well as plasma cell expansion and autoantibody secretion.

While the beneficial effects of MMF have already been described years ago in autoimmune mouse models [25-28] and its impact on aberrations of lymphocyte subsets has been analyzed in mice [29], data on the impact of MMF on lymphocyte subset alterations in patients with SLE are rare. Although the current study has limitations because of its observational character, and restrictions with regard to the material investigated (blood), the results still provide explanations for the beneficial effects observed *in vivo*. In contrast to AZA or cyclophosphamide [1] MMF shows a more selective mechanism of action. It counteracts the enhanced B cell activation that is often observed in patients with SLE. In contrast to AZA, rituximab and cyclophosphamide MMF seems to spare antigen-naïve B cell subsets. This could be advantageous in infections, when pausing MMF might allow humoral immune responses to occur. We did not observe an influence of MPA on resting memory B cells. Compared to the effects observed on B cells, the influence of MMF on T cell subsets seems to be minor in patients with SLE. However, comparing peripheral blood T cell counts and subsets has limitations. Endothelial adhesion of T cells is impaired by MPA [39]. Therefore, T cell numbers and subsets in the peripheral blood might not necessarily reflect the situation found in secondary lymphoid organs or inflamed tissue; there, T cell-dependent antibody responses take place and they might be influenced by MPA. Although, the results of the current study point to a predominant and direct inhibition of B cell proliferation and formation of plasmablasts by MPA, they do not preclude additional effects of this drug on T cells or DCs.

Until recently, the impact of MMF on human B cell subsets has been neglected, because T lymphocytes enjoyed unshared attention as key players of allograft rejection. A study published a few years ago addressed the *in vitro* effect of MPA on purified total human B cells and described an inhibition of CD40-induced proliferation

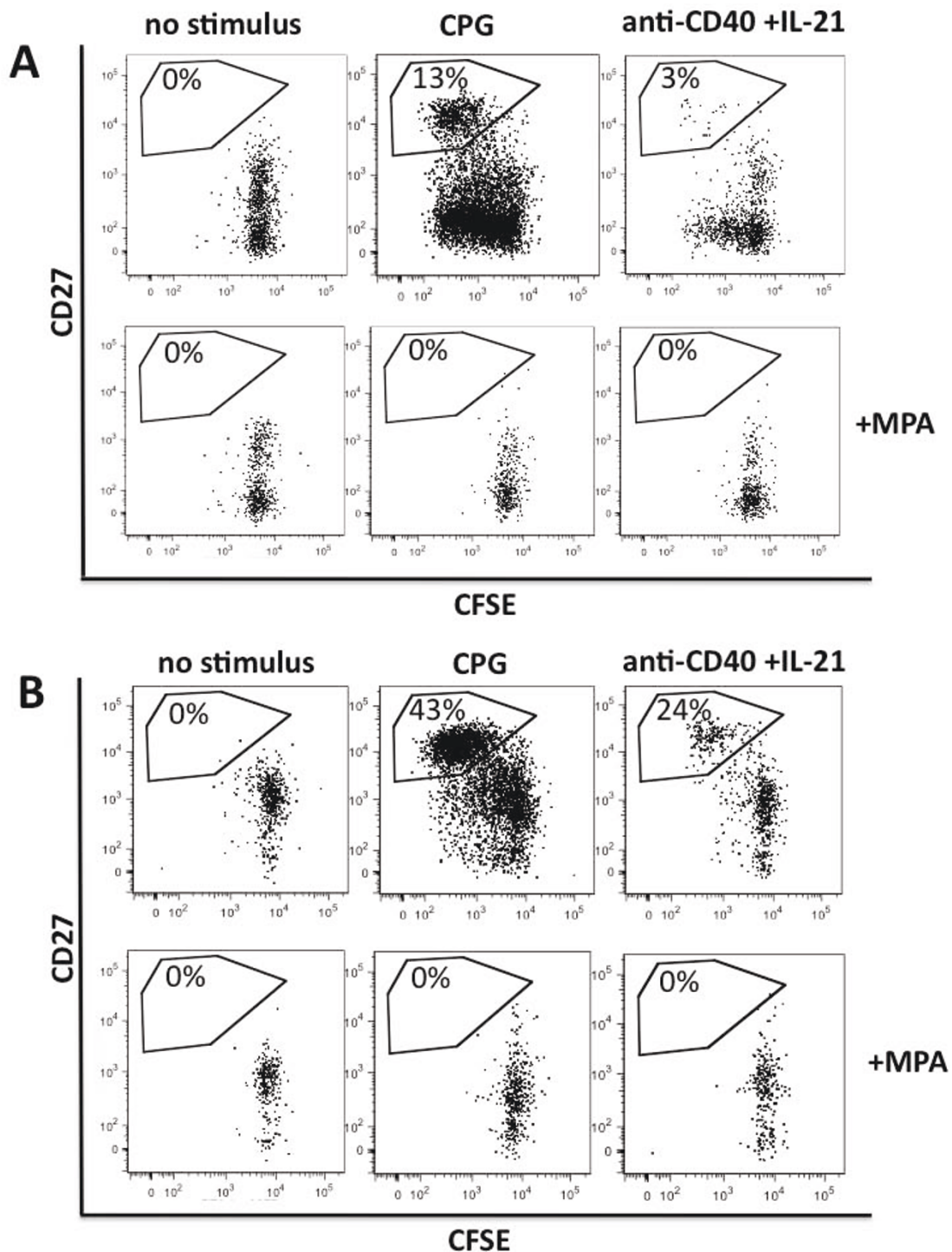
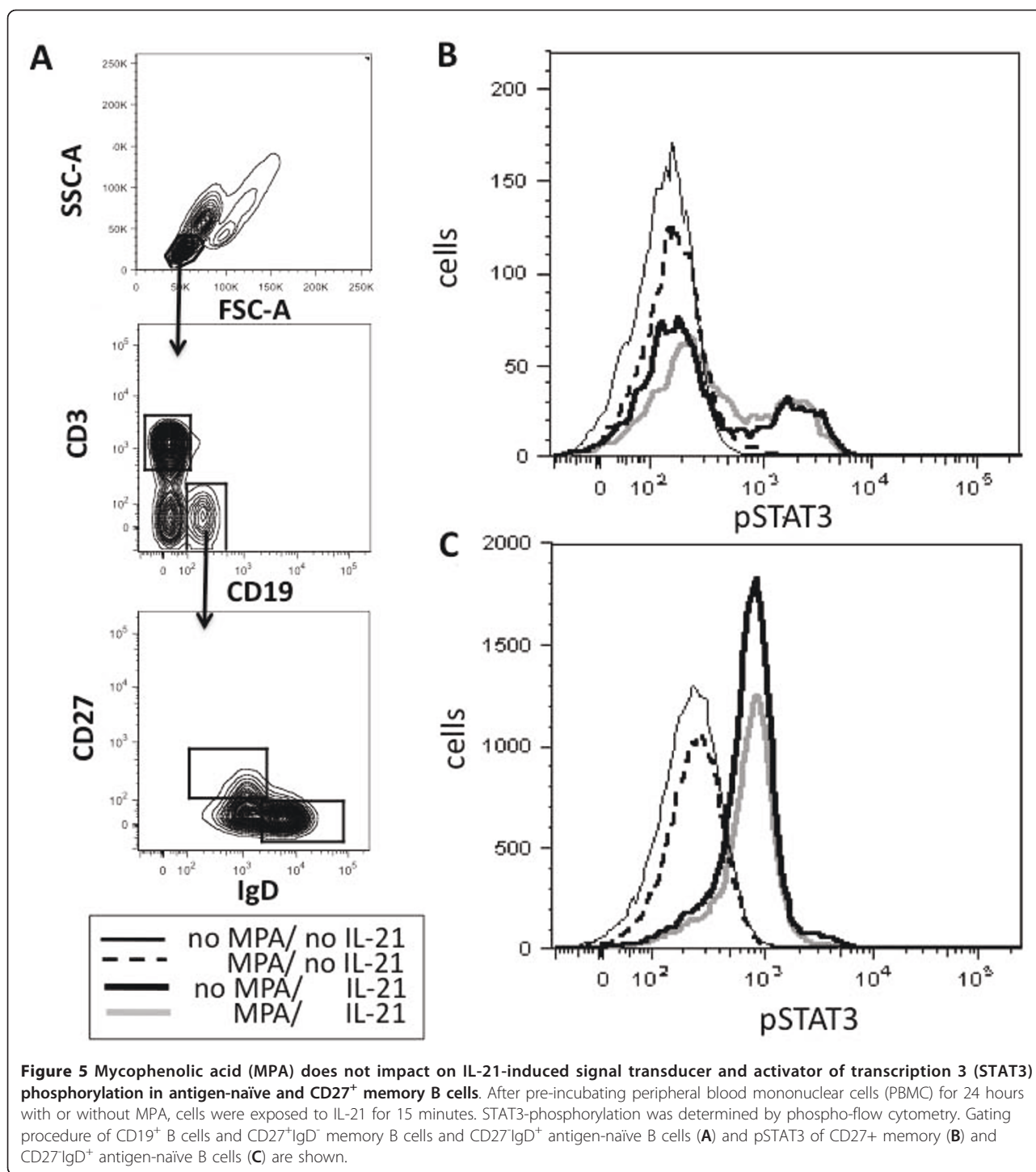


Figure 4 MPA abolishes B cell proliferation and plasma cell formation. Mycophenolic acid (MPA) completely abolishes CPG- or anti-CD40 +IL21-induced proliferation of CD27⁺antigen-naïve B cells (A) or CD27⁺ memory B cells (B). Results of a representative B cell proliferation assay of a healthy donor are shown. CD27⁺IgD⁺ B cells (A) or CD27⁺ B cells (B) were isolated, labeled with carboxy-fluorescein-succinimidyl ester (CFSE) and stimulated for 3 to 4 days as indicated. Gated on live cells, plasmablast gates are shown. Dividing-B cells lose CFSE with any cell division.



[40]. Another study investigated the effect of starting MMF, on peripheral B and T cell activation markers in 10 patients with SLE [41] and found a decrease of CD38⁺⁺ CD19⁺ B cells in most patients.

In agreement with our results it has been shown very recently that B cell proliferation and differentiation of plasma cells is inhibited by MPA even at very low

concentrations (0.3μM), not affecting cell survival [42]. In contrast to B cells, terminally differentiated plasma cells were unresponsive to MPA even at very high concentrations, because of low type-II-IMPDH expression [42]. In line with this lack of impact on long-lived plasma cells, the HLA-DR^{low} ASC subset was only modestly diminished in patients on MMF compared to HLA-DR^{high}

plasmablasts that were markedly lower in patients taking MMF compared to patients on AZA, or patients without immunosuppressive therapy. However, long-term use of MMF might compromise or skew plasma cell memory by lacking influx of newly generated plasma cells into the bone marrow. Although data on vaccination are still limited, humoral immune responses to influenza vaccination seem to be impaired more markedly by MMF than by AZA in kidney transplant recipients and patients with SLE [43,44]. A defect of humoral immune responses that was associated with infections was also identified in patients on MMF for prevention of renal allograft rejection [45].

Even if hypergammaglobulinemia is frequently observed in lupus patients and low IgG levels that are associated with infectious complications are rare, the data suggest that close monitoring of IgG levels is reasonable in patients on MMF, especially when combinations of immunosuppressive drugs are required or significant proteinuria is present. In addition, flow cytometric monitoring of B cell subsets might help to assess MMF efficacy when starting or weaning off treatment, and to identify non-adherent or unresponsive patients with type-II-IMPDH polymorphisms [46].

Summarizing previous and current *in vitro* results, MPA seems to act directly on antigen-naïve and memory B cells, probably mediated by guanosine nucleotide deprivation. An additional impact on STAT3 phosphorylation as observed in a myeloma cell line [23] has not been detected in human B cells. MPA completely abolished TLR-mediated polyclonal B cell proliferation, as well as CD40- and IL-21-induced proliferation. Moreover, alterations of DC or T cell subsets in patients on MMF could further contribute to the positive impact on B cell subsets observed in these patients, although those were not the subjects of this study.

Summarizing the observational data, MMF seems to be able to ameliorate characteristic disturbances of B cell subsets in patients with SLE, such as an increase in plasmablasts, or preferential depletion of antigen-naïve B cells, which is usually a result of AZA or cyclophosphamide treatment. These results are in line with the sustained clinical benefit and favorable safety profile observed in patients treated with MMF for induction or maintenance therapy of lupus nephritis or extrarenal manifestations.

Conclusion

The thorough inhibition of B cell activation and plasma cell synthesis by MMF might explain the favorable outcomes of previous clinical trials in patients with SLE, since enhanced B cell proliferation is a hallmark of this disease. Considering the data obtained in this study and the results of previous randomized clinical trials we suggest that MMF should be used on a regular basis in patients with SLE, especially if signs of enhanced B cell activation are

detected, and if maintenance therapy is required for several years, as in children or young adults with organ-threatening lupus nephritis.

Additional material

Additional file 1: Table S1. The file contains detailed information about the monoclonal antibodies used for flow cytometric analysis.

Abbreviations

ACR: American College of Rheumatology; ASC: antibody secreting cell; AZA: azathioprine; BSA: bovine serum albumin; CFSE: carboxy-fluorescein-succinimidyl ester; DAPI: 4',6-diamidino-2-phenylindole; DC: dendritic cell; FCS: fetal calf serum; GC: germinal center; HLA: human leukocyte antigen; Ig: immunoglobulin; IL: interleukin; IMPDH: inosine monophosphate dehydrogenase; MMF: mycophenolate mofetil; MPA: mycophenolic acid; PBMC: peripheral mononuclear cells; PBS: phosphate buffered saline; SLE: systemic lupus erythematosus; STAT: signal transducers and activators of transcription.

Acknowledgements

We acknowledge the Institute of Transfusion Medicine and Transplantation Immunology, University Hospital Münster for the supply of leukocyte filters.

Author details

¹Rheumatology and Clinical Immunology Unit of the Department of Internal Medicine D, University Hospital Münster, Albert Schweitzer Str. 33, 48149 Münster, Germany. ²Department of Internal Medicine D, University Hospital Münster, Albert Schweitzer Str. 33, 48149 Münster, Germany. ³Center of Laboratory Medicine, University Hospital Münster, Albert Schweitzer Str. 33, 48149 Münster, Germany.

Authors' contributions

SE, EM, EJ, J-RN, and AMJ contributed to the data acquisition and analysis. SE, HJP, and AMJ contributed to the study design and manuscript preparation. All authors have read and approved the final manuscript for publication.

Competing interests

The authors declare that they have no competing interests.

Received: 26 September 2011 Revised: 19 March 2012

Accepted: 30 March 2012 Published: 9 May 2012

References

1. Dorner T, Jacobi AM, Lipsky PE: **B cells in autoimmunity.** *Arthritis Res Ther* 2009, **11**:247.
2. Jacobi AM, Huang W, Wang T, Freimuth W, Sanz I, Furie R, Mackay M, Aranow C, Diamond B, Davidson A: **Effect of long-term belimumab treatment on B cells in systemic lupus erythematosus: extension of a phase II, double-blind, placebo-controlled, dose-ranging study.** *Arthritis Rheum* 2010, **62**:201-210.
3. Huang H, Benoist C, Mathis D: **Rituximab specifically depletes short-lived autoreactive plasma cells in a mouse model of inflammatory arthritis.** *Proc Natl Acad Sci USA* 2010, **107**:4658-4663.
4. Miller JJ, Cole LJ: **Resistance of long-lived lymphocytes and plasma cells in rat lymph nodes to treatment with prednisone, cyclophosphamide, 6-mercaptopurine, and actinomycin.** *D J Exp Med* 1967, **126**:109-125.
5. Appel GB, Contreras G, Dooley MA, Ginzler EM, Isenberg D, Jayne D, Li LS, Mysler E, Sanchez-Guerrero J, Solomons N, Wofsy D, Aspreva Lupus Management Study Group: **Mycophenolate mofetil versus cyclophosphamide for induction treatment of lupus nephritis.** *J Am Soc Nephrol* 2009, **20**:1103-1112.
6. Dooley MA, Jayne D, Ginzler EM, Isenberg D, Olsen NJ, Wofsy D, Eitner F, Appel GB, Contreras G, Lisk L, Solomons N, ALMS Group: **Mycophenolate**

- versus azathioprine as maintenance therapy for lupus nephritis. *N Engl J Med* 2011, **365**:1886-1895.
7. Moore RA, Dery S: **Systematic review and meta-analysis of randomised trials and cohort studies of mycophenolate mofetil in lupus nephritis.** *Arthritis Res Ther* 2006, **8**:R182.
 8. Houssiau FA, D'Cruz D, Sangle S, Remy P, Vasconcelos C, Petrovic R, Fiehn C, de Ramon Garrido E, Gilboe IM, Tektonidou M, Blockmans D, Ravellingien I, le Guern V, Depresseux G, Guillevin L, Cervera R, MAINTAIN Nephritis Trial Group: **Azathioprine versus mycophenolate mofetil for long-term immunosuppression in lupus nephritis: results from the MAINTAIN Nephritis Trial.** *Ann Rheum Dis* 2010, **69**:2083-2089.
 9. Ginzler EM, Dooley MA, Aranson C, Kim MY, Buyon J, Merrill JT, Petri M, Gilkeson GS, Wallace DJ, Weisman MH, Appel GB: **Mycophenolate mofetil or intravenous cyclophosphamide for lupus nephritis.** *N Engl J Med* 2005, **353**:2219-2228.
 10. Chan TM, Li FK, Tang CS, Wong RW, Fang GX, Ji YL, Lau CS, Wong AK, Tong MK, Chan KW, Lai KN: **Efficacy of mycophenolate mofetil in patients with diffuse proliferative lupus nephritis.** Hong Kong-Guangzhou Nephrology Study Group. *N Engl J Med* 2000, **343**:1156-1162.
 11. Odendahl M, Jacobi A, Hansen A, Feist E, Hiepe F, Burmester GR, Lipsky PE, Radbruch A, Dorner T: **Disturbed peripheral B lymphocyte homeostasis in systemic lupus erythematosus.** *J Immunol* 2000, **165**:5970-5979.
 12. Arce E, Jackson DG, Gill MA, Bennett LB, Bancheureau J, Pascual V: **Increased frequency of pre-germinal center B cells and plasma cell precursors in the blood of children with systemic lupus erythematosus.** *J Immunol* 2001, **167**:2361-2369.
 13. Carr SF, Papp E, Wu JC, Natsumeda Y: **Characterization of human type I and type II IMP dehydrogenases.** *J Biol Chem* 1993, **268**:27286-27290.
 14. Nagai M, Natsumeda Y, Weber G: **Proliferation-linked regulation of type II IMP dehydrogenase gene in human normal lymphocytes and HL-60 leukemic cells.** *Cancer Res* 1992, **52**:258-261.
 15. Lee HJ, Pawlak K, Nguyen BT, Robins RK, Sadee W: **Biochemical differences among four inosinate dehydrogenase inhibitors, mycophenolic acid, ribavirin, tiazofurin, and selenazofurin, studied in mouse lymphoma cell culture.** *Cancer Res* 1985, **45**:5512-5520.
 16. Sollinger HW: **Mycophenolate mofetil for the prevention of acute rejection in primary cadaveric renal allograft recipients.** U.S. Renal Transplant Mycophenolate Mofetil Study Group. *Transplantation* 1995, **60**:225-232.
 17. Eugui EM, Almquist SJ, Muller CD, Allison AC: **Lymphocyte-selective cytostatic and immunosuppressive effects of mycophenolic acid in vitro: role of deoxyguanosine nucleotide depletion.** *Scand J Immunol* 1991, **33**:161-173.
 18. Dubsky PC, Friedl J, Stift A, Bachleitner-Hofmann T, Jakesz R, Gnant MF, Weigel G: **Inosine 5'-monophosphate dehydrogenase inhibition by mycophenolic acid impairs maturation and function of dendritic cells.** *Clin Chim Acta* 2006, **364**:139-147.
 19. Cicinnati VR, Hou J, Lindemann M, Horn PA, Sotiropoulos GC, Paul A, Gerken G, Beckebaum S: **Mycophenolic acid impedes the antigen presenting and lymph node homing capacities of human blood myeloid dendritic cells.** *Transplantation* 2009, **88**:504-513.
 20. Mehling A, Grabbe S, Voskort M, Schwarz T, Luger TA, Beissert S: **Mycophenolate mofetil impairs the maturation and function of murine dendritic cells.** *J Immunol* 2000, **165**:2374-2381.
 21. Diehl SA, Schmidlin H, Nagasawa M, van Haren SD, Kwakkenbos MJ, Yasuda E, Beaumont T, Scheeren FA, Spits H: **STAT3-mediated up-regulation of BLIMP1 is coordinated with BCL6 down-regulation to control human plasma cell differentiation.** *J Immunol* 2008, **180**:4805-4815.
 22. Avery DT, Deenick EK, Ma CS, Suryani S, Simpson N, Chew GY, Chan TD, Palendira U, Bustamante J, Boisson-Dupuis S, Choo S, Bleasel KE, Peake J, King C, French MA, Engelhard D, Al-Hajjar S, Al-Muhsen S, Magdorf K, Roesler J, Arkwright PD, Hissaria P, Riminton DS, Wong M, Brink R, Fulcher DA, Casanova JL, Cook MC, Tangye SG: **B cell-intrinsic signaling through IL-21 receptor and STAT3 is required for establishing long-lived antibody responses in humans.** *J Exp Med* 2010, **207**:155-171.
 23. Takebe N, Cheng X, Fandy TE, Srivastava RK, Wu S, Shankar S, Bauer K, Shaughnessy J, Tricot G: **IMP dehydrogenase inhibitor mycophenolate mofetil induces caspase-dependent apoptosis and cell cycle inhibition in multiple myeloma cells.** *Mol Cancer Ther* 2006, **5**:457-466.
 24. He X, Smeets RL, Koenen HJ, Vink PM, Wagenaars J, Boots AM, Joosten I: **Mycophenolic acid-mediated suppression of human CD4+ T cells: more than mere guanine nucleotide deprivation.** *Am J Transplant* 2011, **11**:439-449.
 25. Corna D, Morigi M, Facchinetti D, Bertani T, Zoja C, Remuzzi G: **Mycophenolate mofetil limits renal damage and prolongs life in murine lupus autoimmune disease.** *Kidney Int* 1997, **51**:1583-1589.
 26. McMurray RW, Elbourne KB, Lagoo A, Lal S: **Mycophenolate mofetil suppresses autoimmunity and mortality in the female NZB x NZW F1 mouse model of systemic lupus erythematosus.** *J Rheumatol* 1998, **25**:2364-2370.
 27. Van Bruggen MC, Walgreen B, Rijke TP, Berden JH: **Attenuation of murine lupus nephritis by mycophenolate mofetil.** *J Am Soc Nephrol* 1998, **9**:1407-1415.
 28. Jonsson CA, Svensson L, Carlsten H: **Beneficial effect of the inosine monophosphate dehydrogenase inhibitor mycophenolate mofetil on survival and severity of glomerulonephritis in systemic lupus erythematosus (SLE)-prone MRL/lpr/lpr mice.** *Clin Exp Immunol* 1999, **116**:534-541.
 29. Jonsson CA, Carlsten H: **Inosine monophosphate dehydrogenase (IMPDH) inhibition in vitro suppresses lymphocyte proliferation and the production of immunoglobulins, autoantibodies and cytokines in splenocytes from MRL/lpr/lpr mice.** *Clin Exp Immunol* 2001, **124**:486-491.
 30. William J, Euler C, Christensen S, Shlomchik MJ: **Evolution of autoantibody responses via somatic hypermutation outside of germinal centers.** *Science* 2002, **297**:2066-2070.
 31. Kuchen S, Robbins R, Sims GP, Sheng C, Phillips TM, Lipsky PE, Ettinger R: **Essential role of IL-21 in B cell activation, expansion, and plasma cell generation during CD4+ T cell-B cell collaboration.** *J Immunol* 2007, **179**:5886-5896.
 32. Odegard JM, Marks BR, DiPlacido LD, Poholek AC, Kono DH, Dong C, Flavell RA, Craft J: **ICOS-dependent extrafollicular helper T cells elicit IgG production via IL-21 in systemic autoimmunity.** *J Exp Med* 2008, **205**:2873-2886.
 33. Tan EM, Cohen AS, Fries JF, Masi AT, McShane DJ, Rothfield NF, Schaller JG, Talal N, Winchester RJ: **The 1982 revised criteria for the classification of systemic lupus erythematosus.** *Arthritis Rheum* 1982, **25**:1271-1277.
 34. Hochberg MC: **Updating the American College of Rheumatology revised criteria for the classification of systemic lupus erythematosus.** *Arthritis Rheum* 1997, **40**:1725.
 35. **Centrum für Laboratoriumsmedizin.** [http://klinikum.uni-muenster.de/index.php?id=zentrallabor].
 36. Jacobi AM, Reiter K, Mackay M, Aranson C, Hiepe F, Radbruch A, Hansen A, Burmester GR, Diamond B, Lipsky PE, Dörner T: **Activated memory B cell subsets correlate with disease activity in systemic lupus erythematosus: delineation by expression of CD27, IgD, and CD95.** *Arthritis Rheum* 2008, **58**:1762-1773.
 37. Weigel G, Griesmacher A, Zuckermann AO, Laufer G, Mueller MM: **Effect of mycophenolate mofetil therapy on inosine monophosphate dehydrogenase induction in red blood cells of heart transplant recipients.** *Clin Pharmacol Ther* 2001, **69**:137-144.
 38. Heidt S, Roelen DL, Eijsink C, Eikmans M, van Kooten C, Claas FH, Mulder A: **Calcineurin inhibitors affect B cell antibody responses indirectly by interfering with T cell help.** *Clin Exp Immunol* 2010, **159**:199-207.
 39. Blaheta RA, Leckel K, Wittig B, Zenker D, Oppermann E, Harder S, Scholz M, Weber S, Encke A, Markus BH: **Mycophenolate mofetil impairs transendothelial migration of allogeneic CD4 and CD8 T-cells.** *Transplant Proc* 1999, **31**:1250-1252.
 40. Heidt S, Roelen DL, Eijsink C, van Kooten C, Claas FH, Mulder A: **Effects of immunosuppressive drugs on purified human B cells: evidence supporting the use of MMF and rapamycin.** *Transplantation* 2008, **86**:1292-1300.
 41. Bijl M, Horst G, Bootsma H, Limburg PC, Kallenberg CG: **Mycophenolate mofetil prevents a clinical relapse in patients with systemic lupus erythematosus at risk.** *Ann Rheum Dis* 2003, **62**:534-539.
 42. Karnell JL, Karnell FG, Stephens GL, Rajan B, Morehouse C, Li Y, Swerdlow B, Wilson M, Goldbach-Mansky R, Groves C, Coyle AJ, Herbst R, Ettinger R AJ: **Mycophenolic acid differentially impacts B cell function depending on the stage of differentiation.** *J Immunol* 2011, **187**:3603-3612.

43. Salles MJ, Sens YA, Boas LS, Machado CM: **Influenza virus vaccination in kidney transplant recipients: serum antibody response to different immunosuppressive drugs.** *Clin Transplant* 2010, **24**:E17-23.
44. Borba EF, Saad CG, Pasoto SG, Calich AL, Aikawa NE, Ribeiro AC, Moraes JC, Leon EP, Costa LP, Guedes LK Silva CA, Goncalves CR, Fuller R, Oliveira SA, Ishida MA, Precioso AR, Bonfa E: **Influenza A/H1N1 vaccination of patients with SLE: can antimalarial drugs restore diminished response under immunosuppressive therapy?** *Rheumatology (Oxford)* 2012, **51**:1061-1069.
45. Boddana P, Webb LH, Unsworth J, Brealey M, Bingham C, Harper SJ: **Hypogammaglobulinemia and bronchiectasis in mycophenolate mofetil-treated renal transplant recipients: an emerging clinical phenomenon?** *Clin Transplant* 2011, **25**:417-419.
46. Winnicki W, Weigel G, Sunder-Plassmann G, Bajari T, Winter B, Herkner H, Sengoelge G: **An inosine 5'-monophosphate dehydrogenase 2 single-nucleotide polymorphism impairs the effect of mycophenolic acid.** *Pharmacogenomics J* 2010, **10**:70-76.

doi:10.1186/ar3835

Cite this article as: Eickenberg *et al.*: Mycophenolic acid counteracts B cell proliferation and plasmablast formation in patients with systemic lupus erythematosus. *Arthritis Research & Therapy* 2012 **14**:R110.

**Submit your next manuscript to BioMed Central
and take full advantage of:**

- Convenient online submission
- Thorough peer review
- No space constraints or color figure charges
- Immediate publication on acceptance
- Inclusion in PubMed, CAS, Scopus and Google Scholar
- Research which is freely available for redistribution

Submit your manuscript at
www.biomedcentral.com/submit

