

Gold Bull (2014) 47:205–216  
DOI 10.1007/s13404-014-0143-z

## LITERATURE REVIEW

# Gold etching for microfabrication

T. A. Green

Published online: 11 May 2014

© The Author(s) 2014. This article is published with open access at SpringerLink.com

**Abstract** The etching of gold is a key enabling technology in the fabrication of many microdevices and is widely used in the electronic, optoelectronic and microelectromechanical systems (MEMS) industries. In this review, we examine some of the available methods for patterning gold thin films using dry and wet etching techniques. Dry methods which utilise reactive ion etching (RIE) have a number of important advantages over other methods, but the low volatility of gold etch products has made the development of suitable processes problematic. More recently, the adoption of high-density plasma reactors with optimised chlorine-based chemistries has allowed improved processes to be developed, and etching in hydrogen plasmas also shows promise. Wet etching methods for gold have also been critically reviewed. Traditionally, iodine- and cyanide-based etch processes have been used, but in the last decade, a number of alternative etchants have been studied. Of particular interest is the recent development of a range of novel non-aqueous-based gold etchants, and the suitability of these etchants for microfabrication is assessed.

**Keywords** Gold · Etching · Plasma · Microfabrication · MEMS

## Introduction

Gold is an important material in the fabrication of many microscale devices and is employed extensively in the semiconductor, optoelectronic and microsystem industries [1–3]. The widespread use of gold in these industries arises primarily

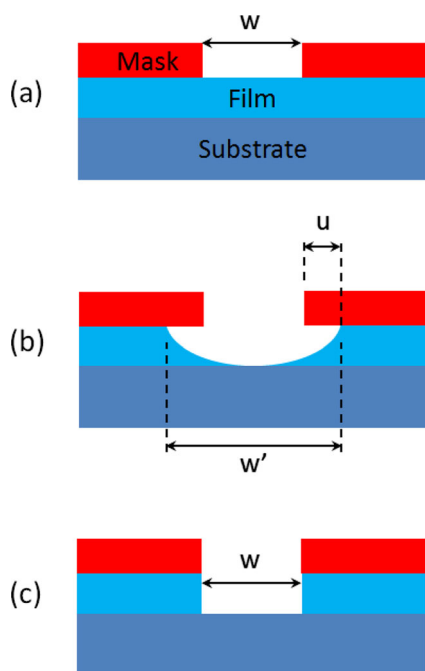
because of its high electrical and thermal conductivity and its excellent corrosion resistance, solderability and bondability. Gold surfaces can also be readily structured and chemically functionalised so they can also be used in a variety of sensing applications. Another advantage is that gold thin films can be deposited using a variety of techniques including ‘dry’ methods (e.g. sputtering and evaporation) and ‘wet’ methods such as electroplating and electroless plating. The resulting films typically have excellent adhesion, low stress, and high ductility and purity, making them ideal for a wide range of applications.

In all of the above industries, gold has principally found use as an interconnect material, as an ohmic contact to semiconductor substrates and as bond pads to facilitate device packaging [1–3]. For high-speed and high-power optoelectronic, semiconductor and microsystem devices, gold is also the preferred material to fabricate radio-frequency (RF) waveguides, switches and interconnects [4–6]. Gold also provides a useful low resistance contact to superconducting thin films [7]. Its application in microsystem and MEMS devices is extremely broad and encompasses, in addition to the above examples, as microcantilevers, actuators, electrodes and also bonding rings and pads to facilitate wafer-level packaging [8].

The patterning of gold thin films to form functional microstructures can be performed using various ‘additive’ and ‘subtractive’ fabrication methods. Examples of the former include ‘lift-off’ techniques [9] and through-mask plating [9, 10], and these are often the preferred methods for patterning thick gold structures. Subtractive methods can be broadly classified as either wet or dry etching methods [11]. In these techniques, the metal film is covered with a lithographically patterned mask material (Fig. 1a) and then exposed to a liquid or gas-phase etchant. Etching is typically used to fabricate micron-sized features, but by using high-resolution stepper or e-beam lithography, it can be extended to the submicron domain to produce nanoscale devices [11].

---

T. A. Green (✉)  
INEX, University of Newcastle, Herschel Annex Building,  
Newcastle upon Tyne NE1 7RU, UK  
e-mail: [todd.green@newcastle.ac.uk](mailto:todd.green@newcastle.ac.uk)



**Fig. 1** Examples of various etch profiles **a** masked substrate with feature size,  $w$  **b** isotropic etch resulting in increased feature size,  $w'$ , and undercut,  $u$  **c** anisotropic etch retaining the same feature width,  $w$

Traditionally, thin film patterning was performed by wet etching, but a disadvantage of this approach is that the etch usually proceeds isotropically and the mask is undercut (Fig. 1b). The resulting loss in feature size became a serious issue when the dimensions of the etch features approached 3–5  $\mu\text{m}$ , and at this stage, wet etching was largely abandoned in the semiconductor industry and replaced by dry etching methods [11]. In contrast to the action of wet etchants, dry etching is highly anisotropic and results in minimum undercut (Fig. 1c). However, for etching larger structures, wet etching is still useful and more cost effective. In addition, some metals are difficult to dry etch, and for this reason, the wet etching of gold, copper and platinum is still widely used.

In the following sections, dry and wet methods of patterning gold thin films for microfabrication are critically reviewed. Dry methods are discussed first, with a particular emphasis on reactive ion (plasma) etching. This is followed by an analysis of wet etching techniques using various aqueous and non-aqueous etchants.

## Dry etching

The term ‘dry etching’ encompasses a wide range of gas-phase physical and chemical processes that can be used to remove material from a substrate or thin film [8, 11]. Examples of the former include ion beam milling and sputter etching where material is removed by bombarding ions breaking surface bonds and ejecting atoms. At the other extreme are

purely chemically driven processes where an etch species adsorbs on the surface to form a volatile product which can then escape into the gas phase. However, from the point of view of microfabrication, the most useful dry etching technique is reactive ion etching (RIE) [12–14]. In this process, both physical and chemical processes operate cooperatively to remove material, and it is suitable for etching a wide range of metals, polymers, dielectrics and semiconductor materials.

## Overview of reactive ion etching

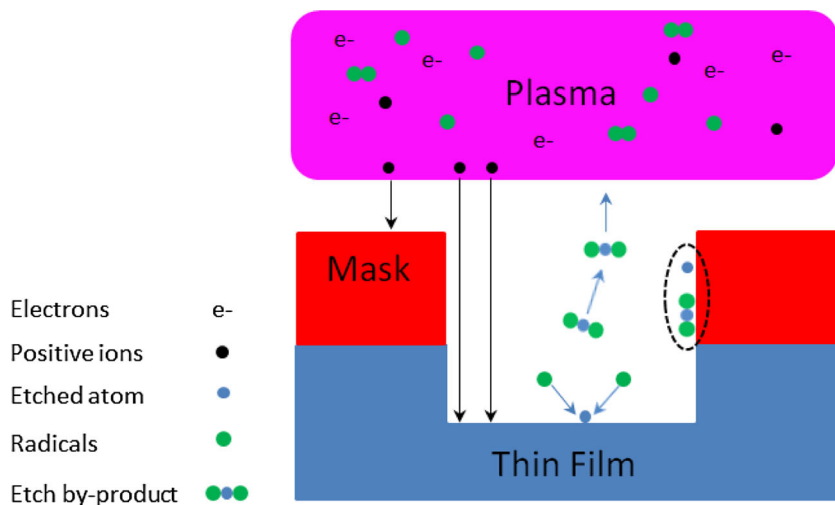
The basic principles of reactive ion etching [12–14] are shown schematically in Fig. 2. Initially, the substrate to be etched is placed in a reactive plasma which contains the etchant gases. It is also patterned with a masking material so that only certain sections of the surface are etched. The function of the plasma is to generate reactive species (radicals and ions) which can assist with the removal of material. Reactive species are transported from the gas phase to the surface where they form volatile products which then desorb and are pumped away. Concurrently, the plasma generates ionic species which bombard the surface, breaking chemical bonds and ejecting atoms. This process also enhances chemical etching so that a more accurate description of the overall etch process is *ion-assisted etching* rather than reactive ion etching [12, 13]. The direction of the bombarding ions is normal to the etch surface so that ion-assisted etching occurs mainly at the bottom of the feature rather than on the sidewalls. This leads to an essentially anisotropic etch profile with little undercut of the mask.

A wide range of RIE systems have been developed [12–14], but a commonly used configuration is the inductively coupled plasma (ICP) etcher shown in Fig. 3. In this system, a low pressure, high-density radio-frequency (RF) plasma is generated in the process chamber using a surrounding inductive coil. The process gases are injected into the chamber by mass flow controllers, and volatile products are removed from the chamber via the pumping system. The chamber pressure is usually maintained at a few millitorr. The wafer substrate is mounted on a ‘chuck’ which is designed to keep the substrate at a near-ambient temperature during the etch process. In the case of etching non-volatile materials (e.g. Cu, Pt and Au), it is advantageous to use a heated chuck to maintain the wafer at an elevated temperature (e.g. 100–250  $^{\circ}\text{C}$ ) [14]. RF power is also supplied separately to the substrate (‘platen’) so that the energy of the bombarding ions can be independently controlled. In terms of controlling the etch process, the most important parameters are the gas flow rates, chamber pressure, RF power and temperature.

## Reactive ion etching of gold

Although dry etching methods are usually the preferred means of patterning metal films for microfabrication, there are a

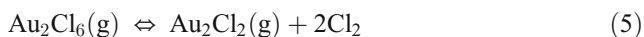
**Fig. 2** Illustration of fundamental processes occurring during reactive ion etching. The dotted area shows a region where non-volatile material has deposited on the sidewall of the mask



number of issues which restrict their application to gold metallisation. For example, a key requirement of a good etch process is that the reaction products are volatile and can be easily removed from the surface to the gas phase [12, 13]. For the RIE of metals, chlorine (Cl<sub>2</sub> or BCl<sub>3</sub>) or bromine (HBr) etch chemistries are often used because many metals such as aluminium and titanium form volatile halide compounds (Table 1). During the chlorine etching of aluminium, Cl radicals generated in the plasma react to form the volatile AlCl<sub>3</sub> species as follows:



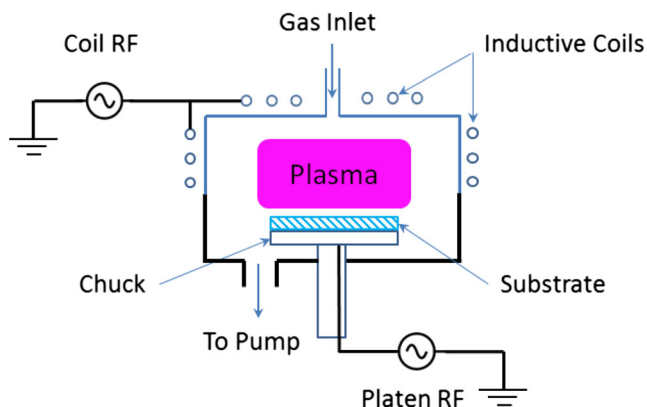
However, in the case of gold, the main reaction product, AuCl<sub>3</sub>, has a low vapour pressure at normal etch temperatures (Table 1) [15]. The low volatility of AuCl<sub>3</sub> can be compensated by increasing the temperature, but above ~130 °C, the AuCl<sub>3</sub> species (which exists as the dimer Au<sub>2</sub>Cl<sub>6</sub> in the vapour phase) decomposes to Au<sub>2</sub>Cl<sub>2</sub> and finally to non-volatile AuCl [15]. This reaction scheme can be represented as:



For this reason, the etch temperature needs to be carefully controlled to maintain the volatility of AuCl<sub>3</sub> while avoiding its thermal decomposition to AuCl [16].

Another consequence of the low volatility of AuCl<sub>x</sub> species is the tendency for etched gold to redeposit elsewhere on the substrate and in the process chamber [17, 18]. This is highly undesirable as it leads to contamination of the wafer and necessitates frequent chamber cleaning [18]. A related phenomenon is that of low volatility etch products redepositing on the sidewalls of the etch mask during the etch process [16, 17]. This can arise from ion-induced sputtering of the non-volatile etch product that forms on the surface and also by direct condensation of etch by-products. The resulting deposits are known as ‘fences’ or ‘veils’ and are often difficult to remove in subsequent processing steps [17, 19]. This problem is particularly severe when a thick photoresist mask is used as a mask. A common solution to this problem is to use a ‘hard’ mask (e.g. SiO<sub>2</sub>) which is typically much thinner and tends to minimise the amount of redeposition [16, 19].

Initial attempts at reactive ion etching of gold films were performed in the 1980s and 1990s using low-density plasma



**Fig. 3** Schematic diagram of an inductively coupled plasma (ICP) reactive ion etch system

**Table 1** Vapour pressures of chlorine etch products at various temperatures [12, 15]

Substance	Temperature (°C)		
	0.01 Torr	0.1 Torr	1 Torr
AuCl <sub>3</sub>	150	185	220
AuCl	520	680	920
AlCl <sub>3</sub>	57	77	99
TiCl <sub>4</sub>	−68	−45	−16

etch systems (Table 2). A very early study was by Mogab and Shankoff [20] who examined the RIE of gold in the context of patterning a Ti-Pd-Au metallisation stack. Using a parallel plate RIE tool and a CClF<sub>3</sub> plasma, they obtained an etch rate of 25 nm/min but observed severe problems with gold redepositing across the wafer surface. In 1993, Ranade et al. [21] performed a detailed investigation of the RIE of gold films using Cl<sub>2</sub>, CF<sub>4</sub> and CCl<sub>4</sub>. A relatively low etch rate of 3 nm/min was observed for etching in pure Cl<sub>2</sub>, but a rate of 100 nm/min was obtained in an optimised CCl<sub>4</sub>/CF<sub>4</sub> mixture. Gold line-widths of 3 μm were achieved with good edge definition and minimal undercut. For the mixed gas process, the etch selectivity for photoresist and SiO<sub>2</sub> masks were 2:1 and 4:1, respectively.

In a later paper, Aldridge [16] used a parallel plate RIE tool to etch Au in a Cl<sub>2</sub> plasma using a SiO<sub>2</sub> hard mask. In initial experiments performed at 75 °C, gold redeposition on the mask surface was observed due to the relative low vapour pressure of the AuCl<sub>3</sub> etch product. At 125 °C, the vapour pressure was sufficiently high that redeposition was not observed, but at 150 °C, gold formed on the feature sidewalls—possibly due to the formation of AuCl. Replacing the SiO<sub>2</sub> mask with a thick photoresist mask also resulted in gold redeposition on the mask sidewalls. Under optimum

conditions, an etch rate of 980 nm/min was achieved, and features as small as 0.5 μm with etch depths of 5 μm could be obtained with vertical sidewalls and minimal undercutting.

A more recent study of gold etching using a parallel plate RIE tool and a CF<sub>4</sub>/Ar plasma was performed by Kang and co-workers [22]. Using a design of experiments approach, they were able to optimise the etch process. A maximum etch rate of 56 nm/min was obtained, and the sidewall profile was approximately 70°. As the expected etch by-product, AuF<sub>x</sub>, has a very low volatility, it is likely that etching mechanism is entirely physical, arising from argon ion sputtering of the AuF<sub>x</sub> layer.

From the period of the late 1990s to the present, conventional RIE tools were largely replaced with high-density plasma equipment [12–14]. As well as inductively coupled plasma systems, electron cyclotron resonance (ECR) etchers were also introduced, and most recent work on gold etching has employed either ICP or ECR tools (Table 2). These allowed many improvements in etch performance, but the fundamental issues associated with the available halogen-based etch chemistries meant that the RIE of gold continued to be problematic. However, one advantage of the new high-density plasma etchers was that they operated at a much lower pressure than earlier parallel-plate RIE systems, and this tended to minimise redeposition and associated fencing issues [23]. Figures 4 and 5 show examples of the ICP etching of gold thin films where redeposition effects are negligible.

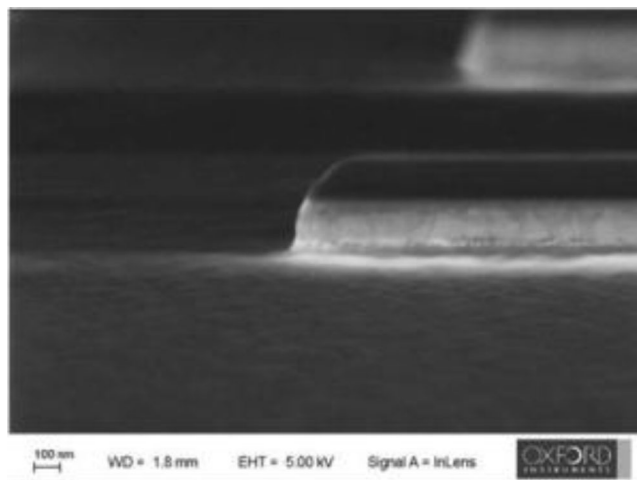
An early high-density plasma study by Ohtake et al. [24] utilised an ECR reactor and a chlorine-based plasma chemistry to etch gold and aluminium films. The plasma discharge was maintained from a microwave source, while separate RF power was supplied to the platen. Initial experiments run with a continuous source power resulted in etch rates of 150 nm/min, but gold redeposition on the sidewalls of the mask was noted. However, by pulsing the source power (i.e. 30 μs on/off cycles), a higher etch rate of 260 nm/min was obtained

**Table 2** Summary of process conditions for the reactive ion etching of gold

RIE system	Etch gases	RF power <sup>a</sup> /W	Pressure/mT	Temp (°C)	Etch mask	Etch profile	Etch rate (nm/min)	Ref
PP	CClF <sub>3</sub>	200	350	85	–	–	25	[20]
PP	CF <sub>4</sub> /CCl <sub>4</sub>	450	150	25	SiO <sub>2</sub> , PR	–	99	[21]
PP	Cl <sub>2</sub>	400	100	125	SiO <sub>2</sub>	85°	980	[16]
PP	CF <sub>4</sub> /Ar	375	32	–	PR	70°	56	[22]
DF	Cl <sub>2</sub> /Ar	–	2	–	PR	75°	35	[19]
ECR	Cl <sub>2</sub>	1,000/100	2	80	PR	–	250	[24]
ICP	Cl <sub>2</sub> /Ar	700/–	15	30	SiO <sub>2</sub>	65°	350	[25]
ICP	Cl <sub>2</sub> /Ar	600/250	2	20	PR	–	70	[28]
ICP	H <sub>2</sub>	500/100	20	10	SiO <sub>2</sub>	–	26	[29]

PP parallel plate, DF dual frequency, ICP inductively coupled plasma, ECR electron cyclotron resonance

<sup>a</sup> For ICP systems, the power is given as coil/platen; for ECR systems, source/platen

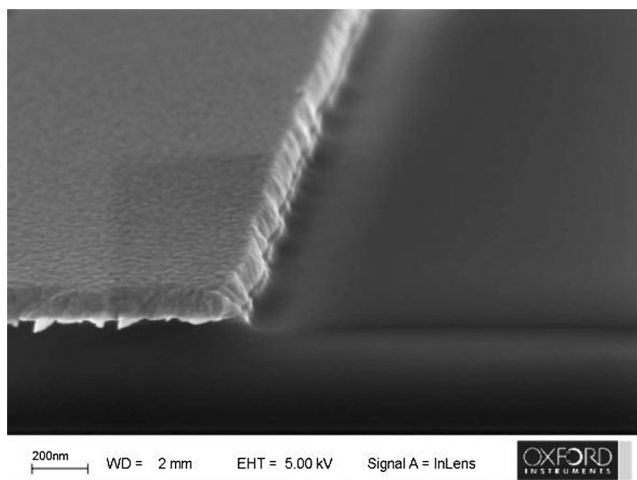


**Fig. 4** ICP etching of Au film in  $\text{Cl}_2$  plasma at 160 °C ( $\text{SiO}_2$  hard mask has not been removed)

without significant redeposition. It was suggested that the enhancement in etch performance was due to the production of additional negative ions under pulse conditions.

In 1999, Werbaneth and co-workers [19] reported the RIE of Au thin films using a dual-frequency magnetically confined etch reactor. Using a photoresist mask and HBr/Ar and  $\text{Cl}_2$ /Ar etch chemistries, it was found that gold redeposited along the mask sidewalls forming veils or fences. However, after optimising the Ar/ $\text{Cl}_2$  process, a maximum etch rate of 350 nm/min was obtained with negligible gold redeposition and a 75° etch profile. The use of a thin hard mask was also found to be effective in eliminating gold redeposition. The corresponding HBr/Ar process gave lower etch rates and more severe gold redeposition but produced a more vertical etch profile due to improved sidewall passivation.

Franz et al. [17] reported the reactive ion etching of a Ti/Pt/Au ohmic contact using a high-density plasma etcher and a variety of etch chemistries. The top Au layer was etched using



**Fig. 5** ICP etching of 100 nm Au film in  $\text{Cl}_2$  plasma at room temperature (photoresist mask has been removed)

a thin  $\text{Al}_2\text{O}_3$  hard mask or a thick photoresist. Using  $\text{Cl}_2$  or  $\text{BCl}_3$ , gold etch rates of 1–4 nm/min were obtained, with  $\text{Cl}_2$  typically etching three times faster. The RIE etch profile was free of redeposited material, whereas attempts to sputter etch the gold layer resulted in fences forming on the resist edges.

The etching characteristics of gold films using an ICP etcher and a  $\text{Cl}_2$ /Ar-based chemistry were examined by Chang et al. [25] in 2003. The highest etch rate of 350 nm/min was observed at a  $\text{Cl}_2/(\text{Cl}_2 + \text{Ar})$  ratio of 0.20, and the selectivity to a  $\text{SiO}_2$  mask was 4:1. The etch rate was 15 % higher than in a pure Ar plasma, indicating that etching occurred by a combination of ion-assisted chemical reactions and physical sputtering, with the latter being the dominate process. XPS analysis of the etched surface showed the existence of Au-Cl bonds, indicative of the presence of a non-volatile  $\text{AuCl}_x$  etch by-products. In subsequent papers [26, 27], these results were used to develop a mechanism and comprehensive etch model for this system.

More recently, Aydemir and Akin [28] studied the etching of gold using a dual-frequency ICP etcher and HBr/Ar and  $\text{Cl}_2$ /Ar chemistries. Redeposition of gold was observed on the resist sidewalls under all etch conditions and was dependent on the thickness (and profile) of the resist etch mask and also the process parameters (e.g. coil and platen RF powers). Gold redeposition was worse for the HBr/Ar plasma than for Ar/ $\text{Cl}_2$  but even in the latter case could not be eliminated entirely. Eventually, the redeposition was eliminated by depositing a thin titanium film on top of the photoresist mask. This is a useful approach when traditional methods of preventing redeposition (i.e. use of thin hard mask [16, 19]) are not feasible.

The various issues associated with halogen etching of gold have led to the investigations of other possible etch chemistries. One promising approach is the use of a  $\text{H}_2$  plasma which has previously also been used to etch ‘difficult’ materials such as copper and silver. In the study of Hess and co-workers [29], the etching of gold film in an ICP reactor using a  $\text{SiO}_2$  hard mask and  $\text{H}_2$ , He and Ar plasmas was explored. Etch rates of 55 nm/min for He, 62 nm/min for Ar and 26 nm/min for  $\text{H}_2$  plasmas were reported. For Ar and He, etching occurs predominantly by a sputtering process, but the low mass of hydrogen species indicates that observed etch rate must also have a chemical aspect. This would presumably occur by the formation of hydride species, but both AuH and  $\text{AuH}_2^-$  are known to have limited thermodynamic stability [29].

## Wet etching

In contrast to many other metals, wet etching of gold is still an important process in microfabrication. This has partially arisen because of the difficulties in patterning gold by dry etching, but also reflects the inherent advantages of wet etching

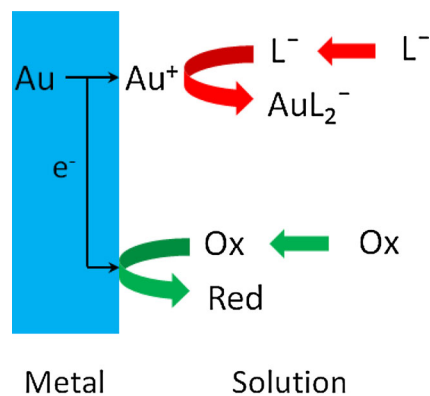
including low equipment costs, low energy usage and high throughput [30, 31]. The isotropic nature often makes it unsuitable for fine pattern delineation, but for many applications, feature sizes are typically in the range of 10–100  $\mu\text{m}$  and masks can usually be biased to compensate for significant undercut [11]. Table 3 summarises the relative advantages and disadvantages associated with dry and wet etching. As well as its use in device fabrication, wet etching is an important technique in the failure analysis of microelectronic components [32] and also in the recovery/recycling of gold from scrap electronic products [33].

Etching solutions for gold contain two essential components [34]. Firstly, a complexing ligand is needed as it is not thermodynamically possible to dissolve gold without forming stable Au(I) complexes [35, 36]. Suitable ligands for gold etching include cyanide, chloride, iodide, bromide, thiosulfate and thiourea. Secondly, an oxidant is needed to establish the potential of the surface at a value where significant gold dissolution can occur [31]. The oxidant and ligand (and their concentrations) must be carefully chosen so that a reasonable etch rate can be attained while avoiding the possibility of passivating the gold surface [35, 36]. As well as these constituents, the etchant may also contain other components such as stabilisers, inhibitors, wetting agents and pH buffers [30].

Wet etching is electrochemical in nature (essentially a controlled corrosion process), and it can be analysed in terms of Wagner and Traud's mixed potential theory [37]. In this model, the oxidation (etching) and reduction reactions occur simultaneously on the metal surface (Fig. 6). For the anodic reaction, Au metal is oxidised to  $\text{Au}^+$  at the metal-solution interface and then forms a complex with ligand ( $\text{L}^-$ ). In the cathodic process, the oxidant is reduced at the same interface and consumes the electrons generated by the anodic reaction. In the absence of an externally applied potential or current, the system will adopt an equilibrium potential where the rates of the two reactions are equal. This potential is known as the *mixed* or *corrosion* potential,  $E_{\text{corr}}$ . The observed etch rate is determined by the anodic current density,  $I_{\text{corr}}$ , that corresponds to the value of the corrosion potential.

**Table 3** Comparison of wet and dry etching methods

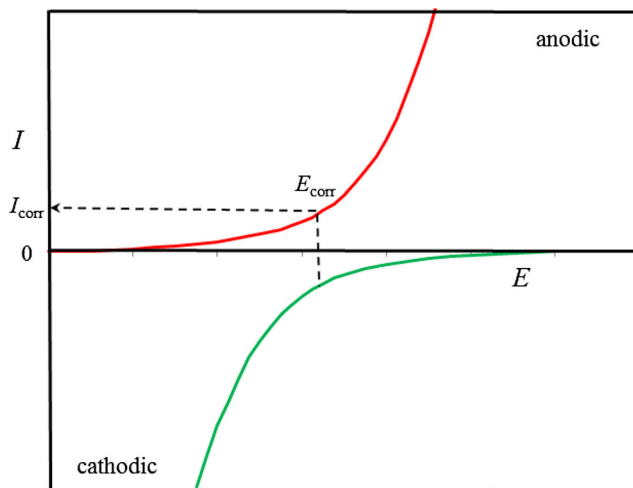
	Dry etching	Wet etching
Environment	Vacuum	Solution
Etch rate	0.01–0.1 $\mu\text{m}/\text{min}$	0.1–1 $\mu\text{m}/\text{min}$
Etch selectivity	High	High
Etch profile	Anisotropic	Isotropic
Etch resolution	<1 $\mu\text{m}$	>3 $\mu\text{m}$
Throughput	Low (single substrate)	High (batch)
Equipment cost	High	Low
Chemical usage	Low	High
Energy usage	High	Low



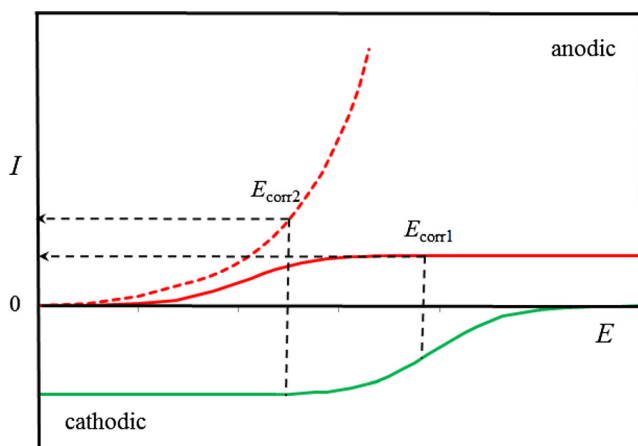
**Fig. 6** Fundamental electrochemical processes occurring during the wet etching of gold

The anodic and cathodic processes can be conveniently represented by individual polarisation curves (Figs. 7 and 8), but the exact dependence of the current,  $I$ , on the potential,  $E$ , will depend on various thermodynamic, mass transport and kinetic considerations [11, 31]. Under kinetic control, the current depends exponentially on potential, but if mass transport constraints become important, a limiting current plateau is observed. In Fig. 7, the corrosion potential occurs at a value where both the cathodic and anodic reactions are kinetically controlled. In Fig. 8, the anodic reaction is shown to be under either kinetic or mass transport control, while the cathodic reaction is under mass transport control. The overall corrosion rate can therefore be controlled by mass transport limitations related to the diffusion of the ligand or oxidant to the surface, and the etch rate will be influenced by solution agitation [11]. By performing such an analysis of the current potential behaviour of the individual reactions, it is possible to rationalise many aspects of the etching process.

The process of wet etching is relatively simple [30, 38, 39]. Firstly, the substrate is patterned with an etch mask. This is typically a photoresist material patterned lithographically, but



**Fig. 7** Polarisation curves for an etching process where the anodic and cathodic processes are both under kinetic control



**Fig. 8** Polarisation curves for an etching process where the anodic reaction is under mass transport (solid line) or kinetic control (dotted line). In the first case, the corrosion rate is determined at  $E_{\text{corr1}}$ . In the latter case, the corrosion rate is determined by  $E_{\text{corr2}}$ , and the etching process is under cathodic mass transport control

masks consisting of self-assembled monolayers have also been used [40]. Unlike in dry etching, there is little erosion of the mask during the process, and the thickness is often not critical. Usually, the substrate(s) to be etched are immersed directly in the etchant solution, but spray etching systems are also common [30, 38]. The temperature and agitation of the etchant solution must be carefully controlled as the etch rate may depend on these parameters. For etch processes under transport control, the degree of agitation must be constant over the entire substrate to ensure uniform etching. This can be difficult to achieve with immersion etching employing mechanical stirring, and spray etching is often better in this regard [30]. The completion of the etch process can usually be determined visually or by using an optical end-point system, but for opaque solutions, timed etches are necessary.

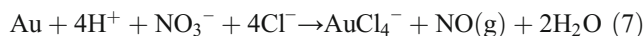
A common concern in wet etching is minimising the extent of undercutting. This is inevitable for an isotropic process but will depend strongly on the prevailing etch conditions. Excessive undercut is often due to the mask becoming partially detached from the underlying film resulting in enhanced lateral etching [30]. Such peeling back of the mask may arise due to poor adhesion of the mask to the film and/or high internal stress [30, 38, 39]. It should be noted that the adhesion of photoresist masks to gold is often quite poor as conventional adhesion promoters (e.g. HMDS) are not effective for metals which do not form a surface oxide. In the case of etching metal films in contact with a second metal, various electrochemical effects can also occur to increase undercutting (*Galvanic effects in Au etching section*).

Considering that a very large number of gold etchants have been developed, the discussion in the following sections is restricted to systems that are widely used and/or have been systematically studied. A 1985 review by Norrman and Stripple [34] evaluated a number of gold etchants, and details

on many others can be found in a number of standard compilations of etch recipes [11, 38, 39, 41–43].

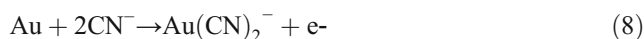
#### Aqueous etchants

The most well-known etchant for gold is a mixture of concentrated hydrochloric and nitric acid, known as *aqua regia* [44]. The overall reaction for gold dissolution can be given as:



The potency of the etchant tends to decline with time due to the formation of volatile products such as NOCl and Cl<sub>2</sub>. While *aqua regia* is capable of dissolving gold at a very high rate (~10 μm/min [39, 41]), its corrosiveness toward other materials and general instability make it impractical for use in microfabrication. Dilution of *aqua regia* with water produces a slower and more practical etchant that is compatible with some photoresists, but etch stability is still an issue [42].

A more useful gold etchant is the alkaline cyanide system, which is used extensively for the hydrometallurgical extraction of gold [45]. This etchant is usually formulated from NaCN or KCN salts with O<sub>2</sub>, H<sub>2</sub>O<sub>2</sub> or Fe(CN)<sub>6</sub><sup>3-</sup> as the oxidant [34]. They are usually operated in the alkaline region (pH > 10) to avoid the formation of HCN gas. The corresponding anodic and cathodic reactions in oxygen-containing solutions are:



Representative polarisation curves for these two reactions and the resulting mixed potentials are shown in Fig. 8. If the cyanide concentration is low, then the anodic reaction is under mass transport control and a limiting current is observed. At higher concentrations, it is under kinetic control, and the current increases exponentially with potential. For the reduction reaction, the concentration of dissolved O<sub>2</sub> is also low so that this reaction can also be under mass transport control. The temperature dependence of the gold dissolution rate in aerated cyanide solutions corresponds to an activation energy of 8–20 kJ/mol [45] which is indicative of an anodic or cathodic mass transport controlled process [46].

There are a number of reports [34, 40, 47, 48] of using cyanide etchants to pattern thin gold films, and MacArthur [47] has reported an etch rate of 60 nm/min in an etchant comprising 0.4 M K<sub>3</sub>Fe(CN)<sub>6</sub>, 0.2 M KCN and 0.1 M KOH. In some cases, the use of cyanide has been found to be superior to iodine-iodide system in terms of surface

roughness, feature definition and degree of undercutting [34, 48]. It is also compatible with the use of photoresists and self-assembled monolayers as etch masks [40], and the transparency of the solution allows a convenient visual endpoint. Despite these advantages, the high toxicity of cyanide and corresponding issues with disposal have severely curtailed its use. However, it is still commercially available, and it is often the preferred etchant when fine pitches are required and minimal undercut can be tolerated [49].

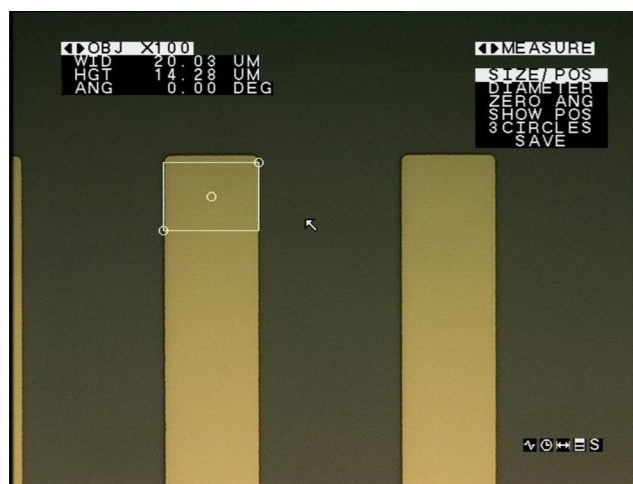
The most commonly used etchant for patterning gold is undoubtedly the iodine-iodide system [7, 32, 34, 48, 50]. This is typically formulated from KI or NaI salts and I<sub>2</sub> [34, 50]. The oxidant in this system is the triiodide ion (I<sub>3</sub><sup>−</sup>) formed by the reaction of I<sub>2</sub> with I<sup>−</sup>. The corresponding anodic and cathodic reactions are:



Under normal etching conditions, the anodic and cathodic reactions are expected to be under kinetic control (Fig. 7) with the etch rate largely independent of agitation rates [47]. The temperature dependence of the etch rate for commercially available iodine-iodide etchant [51] yields an activation energy of ~35 kJ/mol, indicative of a kinetically controlled process [46].

A typical formulation of this etchant is 0.6 M KI or NaI and 0.2 M I<sub>2</sub> which gives an etch rate of 0.5–1 μm/min at room temperature [34, 39]. This is suitable for fast etching of thick gold films, but for thinner films, it is usually diluted further to bring it into the range of 50–200 nm/min. This solution also etches Al, Ni, and NiCr at an appreciable rate and commercial formulations often contain inhibitors (e.g. phosphate compounds) to minimise the attack on these metals [52, 53]. The etch is easy to prepare, has low toxicity and operates in a near-neutral pH range. It also has good compatibility with positive and negative photoresists but not with alkanethiol SAM resists [40]. Etch performance is generally good (Fig. 9), but some issues with non-uniformity, staining and abnormal undercutting have been noted [18, 32, 34, 48, 50]. Another issue is that the etchant is opaque which makes it difficult to judge when the etch process is complete [42]. There is one report [54] of gold etching in bromine-bromide solutions. It has similar etch characteristics to the iodine-iodide system, but the greater toxicity and high vapour pressure of bromine are obvious disadvantages.

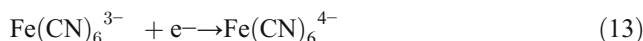
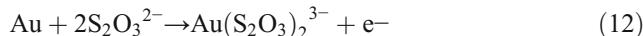
The environmental impact of etchants containing cyanide, bromine and strong acids is obviously high, but the iodine-iodide system represents fewer concerns relating to health and safety and chemical disposal. In addition, a number of



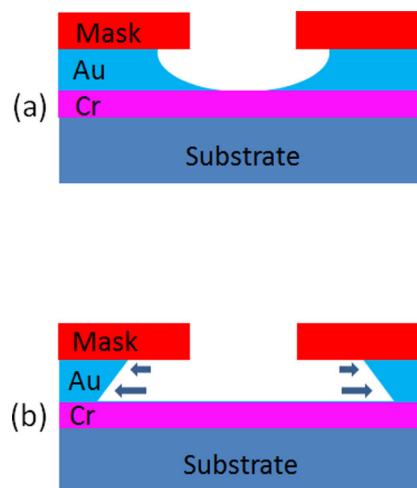
**Fig. 9** Wet etching of 20-μm-wide gold feature in a standard iodine-iodide etchant. The gold thickness is 100 nm

methods [55, 56] have been developed for iodine-based etchants which allow gold recovery and etch regeneration so the sustainability of the process is good.

Another gold etchant which has been proposed is the thiosulfate system formulated from K<sub>2</sub>S<sub>2</sub>O<sub>3</sub> and KOH and using K<sub>3</sub>Fe(CN)<sub>6</sub> as an oxidant [57]. These etchants are usually operated in the alkaline region as thiosulfate ions as unstable at pH < 10 [3]. The electrochemical reactions occurring at the gold surface are:

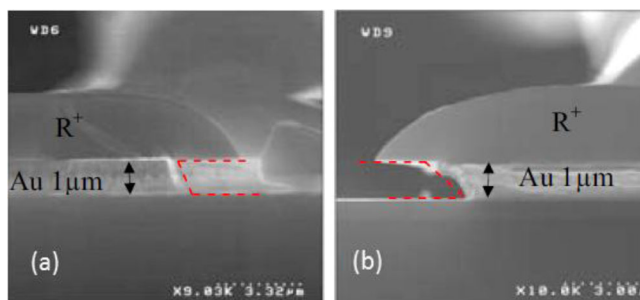


This formulation has been used to etch gold films that had been patterned with self-assembled monolayers using



**Fig. 10** Wet etching profiles showing **a** normal isotropic profile and **b** abnormally undercut profile due to galvanic effects





**Fig. 11** Images of wet etching profiles for Au films etched in iodine etchant under different conditions [50]. **a** Normal isotropic profile and **b** reentrant profile due to galvanic effects.  $R^+$  denotes the photoresist mask. Reproduced by permission of The Electrochemical Society

microcontact printing. This etchant resulted in fewer defects, better edge definition and a higher etch rate than for cyanide-based etchants. Etch rates are typically low (<10 nm/min), and the solutions have limited stability. In order to address this, the benzene thiosulfonate ligand was used in place of thiosulfate [58]. This etchant was more stable but produced a greater number of etch defects. All these etchants operate at a  $\text{pH} \approx 14$ , which is suitable for SAM masks but is incompatible with positive photoresists and many substrates.

#### Electrochemical etching

A related technique for patterning thin metal films is electrochemical etching or ‘deplating’ [18, 59, 60]. In this approach, an external current or potential is used to drive the anodic dissolution process rather than relying on the action of oxidising agents. The etch solution still requires a ligand to form soluble complexes, and an underlying conductive layer (e.g. TiW) is also necessary to supply the current. One advantage of this approach is that, by careful consideration of current distribution and mass transport effects, it is possible to achieve a more anisotropic etch profile (i.e. reduced undercutting) than for conventional wet etching [61].

Hu and Ritzdorf [59] demonstrated the use of electrochemical etching to remove gold seed layers following through-mask plating—a process that is normally performed by wet etching. An etch system similar to a conventional ‘fountain’ wafer plater was used, and this allowed the hydrodynamic conditions, current distribution and temperature to be precisely controlled. While etching in acid chloride solutions left behind residues, the use of iodide with a sulfite stabiliser

resulted in complete removal of gold and with negligible undercutting. Electrochemical etching of Au seed layers in thiourea solutions has also been investigated, but due to local variations in the etch rate, it was difficult to develop a stable and repeatable process [18]. More recently, selective removal of gold thin films in chloride media using electrochemical etching has also been used to successfully fabricate RF MEMS devices [60].

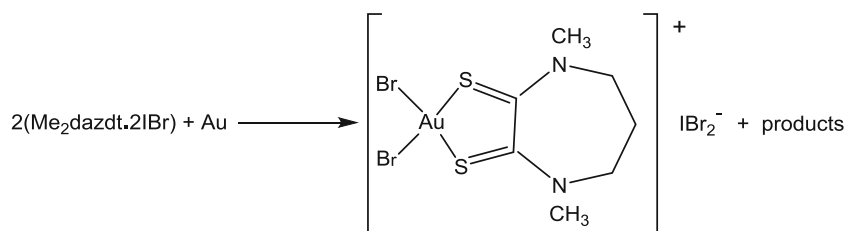
#### Galvanic effects in Au etching

Wet etching of gold usually results in an isotropic profile (Fig. 10a), but in the presence of another metal, a vertical or reentrant profile with much greater undercut is often observed (Fig. 10b). This typically occurs when etching a gold film with an underlying adhesion layer of Cr, Ti or TiW. Such effects have been noted by a number of authors [34, 48, 50], and it is thought to be caused by the two metals forming a galvanic couple. Usually, it is found that the etch proceeds in a normal isotropic manner, but just at the point where the gold disappears and the under-layer is exposed to the solution, the lateral etch rate increases rapidly [48].

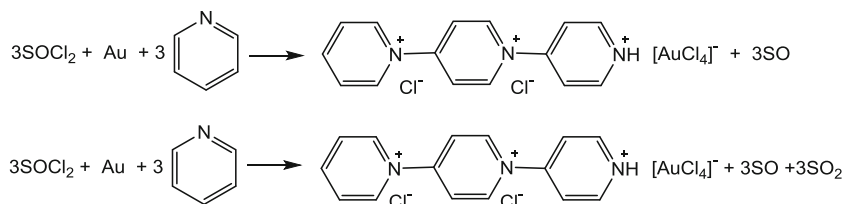
This effect can be understood as follows [11, 30]. Initially, the oxidation and reduction reactions proceed on the Au surface exposed to the etchant. However, after the Au is fully etched and the under-layer metal is exposed, the cathodic process can usually be sustained on that surface (and also on the remaining Au on the etch sidewalls), and the available area is unchanged. In contrast, the only remaining Au surface for the oxidation reaction to occur is on the sidewalls, and this area will be typically much lower than the original Au area. So while the *current* through the anodic element will be similar to that which prevailed at the beginning of the etch, the *current density* will be much higher. It is this area effect which is mainly responsible for the observed acceleration in etch rate.

Such galvanic effects have been mainly observed for etching in iodine-iodide solution, but not for the cyanide systems [34, 48]. In the latter case, the maximum current density that can pass through the anodic element is usually controlled by mass transport (Fig. 8). This will certainly be the case if the cyanide concentration in solution is kept relatively low. The use of mass transport limitations to minimise galvanic undercut has been exploited in many other etch systems [62]. For the iodine-iodide system, the etch composition, nature of the

**Fig. 12** Reaction scheme for the dissolution of gold in THF solutions containing the  $\text{Me}_2\text{dazdt} \cdot 2\text{IBr}$  reagent [65]



**Fig. 13** Probable reaction scheme for the dissolution of gold in  $\text{SOCl}_2$ /pyridine mixtures ('organic aqua regia') [68]



under-layer metal and etch mode (i.e. spray versus immersion) all influence the amount of galvanic undercut (Fig. 11), but usually it cannot be eliminated entirely [50].

#### Nonaqueous etchants

Given the limitations associated with some aqueous-based gold etchants, various attempts have been made to develop non-aqueous alternatives. For example, Bigoli et al. [63] have developed a range of powerful oxidising agents capable of dissolving gold in tetrahydrofuran (THF) solutions. In an initial study, they prepared the bis-diiodine adduct of *N,N'*-dimethylperhydrodiazepine-2,3-dithione ligand ( $\text{Me}_2\text{dazdt.2I}_2$ ). This new etchant was successfully used to remove thin gold layers from GaAs laser diodes for the purpose of failure analysis [64]. In a subsequent paper by this group, the iodine-bromine adduct of *N,N'*-dimethylperhydrodiazepine-2,3-dithione was synthesised ( $\text{Me}_2\text{dazdt.2IBr}$ ) [65]. In this etchant, the main reaction product is a Au(III) square planar complex, and the overall reaction for the dissolution of gold is shown in Fig. 12. This new oxidant etched gold at a higher rate (~50 nm/min) than the diiodine adduct and was comparable to that found for aqueous iodine-iodide etchants. These non-aqueous etchants were also found to produce a cleaner and more uniformly etched surface.

In a 2013 study, this group described gold etching using iodine tetraethylthiuram disulfide ( $\text{Et}_4\text{TDS}$ ) mixtures in acetone [66]. Trials on Ti/Au metallised silicon wafers indicated uniform etching with a rate of ca. 30 nm/min. The dissolution of gold powder in thioamide- $\text{I}_2$  adducts has also been reported recently [67]. The best results were obtained using iodine adducts of 3-methyl-benzothiazole-2-thione (mbtt) in diethyl ether solvent, but the etch rate was not determined. One

important advantage of  $\text{Et}_4\text{TDS}$  and mbtt is that they are relatively inexpensive compared to the original  $\text{Me}_2\text{dazdt}$  reagent.

Lin and co-workers [68] have recently formulated etchants consisting of mixtures of thionyl chloride ( $\text{SOCl}_2$ ) and organic solvents such as pyridine and *N,N*-dimethyl formamide (DMF). Such formulations that can etch gold at moderate rates and have been referred to as 'organic aqua regia'. Using a 3:1  $\text{SOCl}_2$ /pyridine mixture, gold could be etched at a rate of 50 nm/min at room temperature. Silver and palladium could also be dissolved in the etchant, but platinum was found to be inert. The overall etch mechanism is unclear, but for gold dissolution, the main reaction product is  $\text{AuCl}_4^-$ , and the reaction scheme shown in Fig. 13 has been proposed.

In a related study, Räsänen et al. [69] reported the dissolution of thiol-functionalised gold in alcohol solutions. By attaching 4-pyridinethiol to the gold surface, uniform dissolution was observed in both methanol and ethanol solvents. The dissolution mechanism involves the formation of soluble Au(I) thiolato complex and is mediated by dissolved oxygen. These complexes have low solubility, and gold precipitation during etching has been observed. The technique has also been used to produce free-standing nanometre-thick Au foils, but the etch rate is extremely slow, typically requiring a few days to dissolve a 100-nm-thick Au film.

While all these non-aqueous etchants all have some industrial potential, there are a number of issues that need to be addressed. Firstly, the presence of certain solvents (e.g. acetone, methanol, DMF) makes them incompatible with photoresist materials so that if the gold needs to be patterned, only hard masks can be used. More importantly, many of the etchants contain hazardous solvents (e.g. pyridine, DMF), while reagents like  $\text{SOCl}_2$  are also potentially dangerous. In terms of

**Table 4** Comparison of some aqueous and non-aqueous gold etchants

Etchant [ref]	KCN/ $\text{O}_2$ [34]	KI/ $\text{I}_2$ [34]	$\text{Me}_2\text{dazdt.2IBr}$ [65]	$\text{Et}_4\text{TDS}/\text{I}_2$ [66]	$\text{SOCl}_2/\text{py}$ [68]
Solvent	Water	Water	THF	Acetone	Pyridine
Etch rate	0.05–1 $\mu\text{m}/\text{min}$	0.05–1 $\mu\text{m}/\text{min}$	0.03 $\mu\text{m}/\text{min}$	0.05 $\mu\text{m}/\text{min}$	–
Undercut	Low	High	–	–	–
Mask	Photoresist	Photoresist	Hard	Hard	Hard
Toxicity	High	Low	Low	Low	High
Cost	Medium	Low	High	Low	High

'Cost' is an estimate of the combined material and disposal costs

addressing environmental and safety concerns, the iodine-based non-aqueous etchants [66] seem to be the most appropriate. Issues regarding the cost of materials and environmental disposal will also need to be considered before any of these etchants can be adopted. Table 4 summarises the various attributes of selected aqueous and non-aqueous gold etchants.

## Conclusions

The etching of gold is an important technology in the fabrication of many microdevices, and over the last few decades, considerable advances in both the understanding and practical application of this technique have been made. Dry methods which utilise reactive ion etching have a number of important advantages over other methods, but the low volatility of gold etch products is a key problem. However, the introduction of high-density plasma reactors with optimised chlorine-based chemistries has allowed improved processes to be developed, and alternate plasma chemistries (e.g. hydrogen) are also being explored. The use of heated chucks to improve the volatility of gold etch products is another possible solution, but care needs to be taken to avoid the formation of other non-volatile products at elevated temperatures.

Significant progress in the development of wet etchants for gold has also been made. Traditionally, iodine- and cyanide-based etch processes have been used, but due to toxicity of the latter, it is only used in a few niche applications. The dominant gold etchant is iodine-iodide, and while it is satisfactory for most applications, it has some process issues and is particularly prone to undercutting arising from galvanic effects. The introduction of microcontact printing using self-assembled monolayers as etch masks had also led to the development of various new gold etches which are compatible with these materials. The use of electrochemical etching has also been explored, and for applications such as gold seed layer removal, it has some advantages over conventional wet etching. Finally, in the last decade there has been considerable work on the development of various non-aqueous etchants, and once issues relating to chemical handling, disposal and costs have been addressed, these etchants may become viable alternatives to aqueous etchants.

**Acknowledgments** The author would like to thank Colin Welch and Owain Thomas at Oxford Instruments for providing the images shown in Figs. 4 and 5.

**Open Access** This article is distributed under the terms of the Creative Commons Attribution License which permits any use, distribution, and reproduction in any medium, provided the original author(s) and the source are credited.

## References

- Holliday R, Goodman P (2002) Going for gold. *IEE Rev* 48:15–19
- Christie IR, Cameron BP (1994) Gold electrodeposition within the electronics industry. *Gold Bull* 27:12–20
- Green TA (2007) Gold electrodeposition for microelectronic, optoelectronic and micro-system applications. *Gold Bull* 40:105–114
- Williams R (1990) *Modern GaAs processing methods*. Artech House, Boston
- Varadan VK, Vinoy KJ, Jose KA (2003) *RF MEMS and their applications*. John Wiley & Sons, Chichester
- Wooten EL, Kissa KM, Yi-Yan A, Murphy EJ, Lafaw DA, Hallemeier PF, Maack D, Attanasio DV, Fritz DJ, McBrien GJ, Bossi DE (2000) A review of lithium niobate modulators for fiber-optic communications systems. *IEEE J Sel Top Quant* 6:69–81
- Eidelloth W, Sandstrom RL (1991) Wet etching of gold films compatible with high  $T_c$  superconducting thin films. *Appl Phys Lett* 59:1632–1634
- Liu C (2006) *Foundations of MEMS*. Pearson Education, Upper Saddle River
- Madou MJ (2002) *Fundamentals of microfabrication: the science of miniaturization*, 2nd edn. CRC Press, Boca Raton
- Roy S, Gupte Y, Green TA (2001) Flow cell design for metal deposition at recessed circular electrodes and wafers. *Chem Eng Sci* 56:5025–5035
- Köhler M (1999) *Etching in microsystem technology*. Wiley-VCH, Weinheim
- Lieberman MA, Lichtenberg AJ (1994) *Principles of plasma discharges and materials processing*. John Wiley & Sons, New York
- Chen FF, Chang JP (2002) *Principles of plasma processing: a lecture course*. Kluwer Academic Publishers
- Donnelly VM, Kornblit A (2013) Plasma etching: yesterday, today and tomorrow. *J Vac Sci Technol A* 31:050825–1–050825–48
- Landsberg A, Hoatson CL (1970) The kinetics and equilibria of the gold-chlorine system. *J Less Common Metals* 22:327–339
- Aldridge FT (1995) High speed anisotropic reactive ion etching of gold films. *J Electrochem Soc* 142:1563–1565
- Franz G, Kachel R, Sotier (2002) Residual free reactive ion etching of the Bell contact Ti/Pt/Au. *Mater Sci Semicond Process* 5:45–50
- Werbaneth P, Lester T, Pakulska J (2003) Removing gold seed-layer materials using reactive ion etch. *MICRO* 21:47–55
- Werbaneth P, Hasan Z, Rajora P, Rousey-Seidel M (1999) The reactive ion etching of Au on GaAs substrates in a high density plasma etch reactor. Available via <http://gaasmantech.com/Digests/1999/PDF/12.pdf> Accessed 6 April 2014
- Mogab CJ, Shankoff TA (1977) Plasma etching of titanium for application to the patterning of Ti-Pd-Au metallization. *J Electrochem Soc* 124:1766–1771
- Ranade RM, Ang SS, Brown WD (1993) Reactive ion etching of thin gold films. *J Electrochem Soc* 140:3676–3678
- Kang TY, Kim G, Cho IH, Seo D, Hong SJ (2009) Process optimization of  $CF_4/Ar$  plasma etching of Au using I-optimal design. *Thin Solid Films* 517:3919–3922
- Delprat S, Chaker M, Margot J (2001) Investigation of the gas pressure influence on patterned platinum etching characteristics using a high-density plasma. *J Appl Phys* 89:29–33
- Ohtake H, Samukawa S, Oikawa H, Nashimoto Y (1998) Enhancement of reactivity in Au etching by pulse-time-modulation  $Cl_2$  plasma. *Jpn J Appl Phys* 37:2311–2313
- Chang YS, Kim DP, Kim CI, Sim KB, Chang EG (2003) Etching characteristics of Au thin films using inductively coupled  $Cl_2/Ar$  plasma. *J Korean Phys Soc* 42:S791–S794
- Efremov AM, Kim DP, Kim CI (2003) Etching characteristics and mechanism of Au thin films in inductively coupled  $Cl_2/Ar$  plasma. *J Vac Sci Technol A* 21:1837–1842

27. Efremov AM, Kim DP, Kim CI (2004) Simple model for ion-assisted etching using  $\text{Cl}_2$ -Ar inductively coupled plasma: effect of gas mixing ratio. *IEEE Trans Plasma Sci* 32:1344–1351
28. Aydemir A, Akin T (2012) Prevention of sidewall re-deposition of etched by-products in the dry Au etch process. *J Micromech Microeng* 22:74004–74009
29. Choi TS, Levitin G, Hess DW (2013) Mechanistic considerations in plasma-assisted etching of Ag and Au thin films. *ECS Solid State Technol* 2:P275–P281
30. Romankiw LT (1976) Pattern generation in metal films using wet chemical techniques: a review. In: Hughes HG, Rand MJ (eds) *ECS Proceedings of the Symposium on Etching for Pattern Definition*. Princeton, The Electrochemical Society, pp 161–193
31. MacArthur D (1976) Chemical etching of metals. In: Hughes HG, Rand MJ (eds) *ECS Proceedings of the Symposium on Etching for Pattern Definition*. Princeton, The Electrochemical Society, pp 76–91
32. Mura G, Vanzi M, Stangoni M, Ciappa M, Fichtner W (2003) On the behaviour of the selective iodine-based gold etch for the failure analysis of aged optoelectronic devices. *Microelectron Reliab* 43:1771–1776
33. Syed S (2012) Recovery of gold from secondary sources—a review. *Hydrometallurgy* 115–116:30–51
34. Norrman SH, Stripple H (1985) A theoretical and experimental study of chemical etching methods of the TiW-Au system for microwave hybrid applications. In: *Proceedings of the International Symposium on Microelectronics*, Anaheim, November 11–14 1985, pp 268–275, International Society for Hybrid Microelectronics
35. Nicol MJ (1980) The anodic behaviour of gold. Part 1—oxidation in acidic solutions. *Gold Bull* 13:46–55
36. Nicol MJ (1980) The anodic behaviour of gold. Part 2—oxidation in alkaline solutions. *Gold Bull* 13:105–111
37. Wagner C, Traud W (1938) On the interpretation of corrosion processes through the superposition of electrochemical partial processes and on the potential of mixed electrodes. *Z Elektrochem* 44:391–399
38. Burns DW (2011) MEMS wet-etch processes and procedures. In: Ghodssi R, Lin P (eds) *MEMS materials and process handbook*. Springer, New York, pp 457–665
39. Kern W, Deckert CA (1978) Chemical etching. In: Vossen JL, Kern W (eds) *Thin film processes*. Academic, New York, pp 401–496
40. Kumar A, Biebuyck HA, Whitesides GM (1994) Patterning self-assembled monolayers: applications in materials science. *Langmuir* 10:1498–1511
41. Walker P, Tarn WH (eds) (1991) *CRC handbook of metal etchants*. CRC Press, Boca Raton
42. Williams KR, Gupta K, Wasilik M (2003) Etch rates for micromachining processing—part II. *J Micromech Syst* 12:761–778
43. Glang R, Gregor LV (1970) Generation of patterns in thin films. In: Maissel LI, Glang R (eds) *Handbook of thin film technology*. McGraw-Hill, New York, Chapter 7
44. Atkins P, Overton T, Rourke J, Weller M, Armstrong F, Hagerman M (2010) *Inorganic chemistry*, 5th edn. W.H. Freeman, New York, p 459
45. Marsden J, House CI (2006) *The chemistry of gold extraction*, 2nd edn. SME, Littleton
46. Power GP, Ritchie IM (1975) Metal displacement reactions. In: Bockris JOM, Conway BE, White RE (eds) *Modern aspect of electrochemistry*, 11th edn. Plenum Press, London, pp 199–250
47. MacArthur DM (1974) Technique for selective etching of gold and etchant therefor. US Patent 3,846,196, 5 Nov 1974
48. Nemirovsky Y, Blech IA, Yahalom J (1978) Abnormal undercutting in etched Cr/Au films. *J Electrochem Soc* 125:1177–1179
49. Haberland J, Becker M, Lutke-Notarp D, Kallmayer C, Aschenbrenner R, Reichl H (2010) Ultrathin 3D ACA Flipchip-in-Flex Technology. *IMAPS Device Packaging Conference*, Scottsdale, 8–11 March 2010
50. Gabette L, Segaud R, Fadloun S, Avale X, Besson P (2009) Gold wet etch optimization on 200 mm substrates for MEMS applications. *ECS Trans* 25:337–344
51. Data for Transene TFA etchant [http://www.transene.com/au\\_etchant.html](http://www.transene.com/au_etchant.html) Accessed 6 April 2014
52. Su KC, Lu HH, Chen CC, Moore JC (2008) Maximizing selectivity during wet-chemical gold etching. <http://www.csmantech.org/Digests/2008/2008%20Papers/17.1.pdf> Accessed 6 April 2014
53. Licari JJ, Enlow LR (1991) *Hybrid microcircuit technology handbook: materials, processes, design, testing and production*, 2nd edn. Noyes, Westwood pp 97–98
54. Bahl SK, Leach GL (1980) Gold etchant composition and method. US Patent 4,190,489, 26 Feb 1980
55. Nguyen NV, Jeong J, Shin D, Kim BS, Lee JC, Pandey BD (2012) Simultaneous recovery of gold and iodine from the rinse water of the semiconductor industry using activated carbon. *Mater Trans* 53:760–765
56. Union RE (2009) Recovery of gold from potassium iodide-iodine etching solution. US Patent 7,582,136, 1 Sept 2009
57. Xia Y, Zhao XM, Kim E, Whitesides GM (1995) A selective etching solution for use with patterned self-assembled monolayers of alkanethiolates on gold. *Chem Mater* 7:2332–2337
58. Burdinski D, Bles MH (2007) Thiosulfate- and thiosulfonate-based etchants for the patterning of gold using micro-contact printing. *Chem Mater* 19:3933–3944
59. Hu Z, Ritzdorf T (2007) Cyanide- and thiourea-free electrochemical etching of gold for microelectronics applications. *J Electrochem Soc* 154:D543–D549
60. Sterner M, Roxhed N, Stemme G, Oberhammer J (2011) Electrochemically assisted maskless selective removal of metal layers for three-dimensional micromachined SOI RF MEMS transmission lines and devices. *J Micromech Syst* 20:899–908
61. Datta M (1998) Microfabrication by electrochemical metal removal. *IBM J Res Dev* 42:655–669
62. Kelly JJ, de Minjer CH (1975) An electrochemical study of undercutting during etching of duplex metal films. *J Electrochem Soc* 122:931–936
63. Bigoli F, Deplano P, Mercuri ML, Pellinghelli MA, Pintus G, Serpe A, Trogu EF (1998) A powerful new oxidation agent towards metallic gold powder: *N,N'*-dimethylperhydrodiazepine-2,3-dithione (D) bis(diiodine). Synthesis and x-ray structure of  $[\text{AuDI}_2]_3$ . *Chem Commun* 2351–2352
64. Vanzi M, Bonfiglio A, Salaris P, Deplano P, Trogu EF, Serpe A, Samini G, De Palo R (1999) Gold removal in failure analysis of GaAs-based laser diodes. *Microelectron Reliab* 39:1043–1047
65. Cau L, Deplano P, Marchio L, Mercuri ML, Pilia L, Serpe A, Trogu EF (2003) New powerful reagents based on dihalogen/*N,N'*-dimethylperhydrodiazepine-2,3-dithione adducts for gold dissolution: the IBr case. *Dalton Trans* 1969–1974
66. Serpe A, Marchio L, Artizzu F, Mercuri ML, Deplano P (2013) Effective one-step gold dissolution using environmentally friendly low-cost reagents. *Chem Eur J* 19:10111–10114
67. Isaia F, Aragoni MC, Arca M, Caltagirone C, Demartin F, Garau A, Lippolis V (2013) Gold oxidative dissolution by (thioamide)- $\text{I}_2$  adducts. *Dalton Trans* 42:492–498
68. Lin W, Zhang RW, Jang SS, Wong CP, Hong JI (2010) Organic aqua regia—powerful liquids for dissolving noble metals. *Angew Chem Int Ed* 49:7929–7932
69. Räsänen MT, Kemell M, Leskelä M, Repo T (2007) Oxidation of elemental gold in alcohol solutions. *Inorg Chem* 46:3251–3256