



PUBLISHED FOR SISSA BY SPRINGER

RECEIVED: December 14, 2013

REVISED: February 28, 2014

ACCEPTED: March 26, 2014

PUBLISHED: April 23, 2014

A new avenue to charged Higgs discovery in multi-Higgs models

Radovan Dermíšek,^a Jonathan P. Hall,^a Enrico Lunghi^a and Seodong Shin^{a,b}

^a*Physics Department, Indiana University,
Bloomington, IN 47405, U.S.A.*

^b*CTP and Department of Physics and Astronomy, Seoul National University,
Seoul 151-747, Korea*

E-mail: dermisek@indiana.edu, halljp@indiana.edu, elunghi@indiana.edu,
shinseod@indiana.edu

ABSTRACT: Current searches for the charged Higgs at the LHC focus only on the $\tau\nu$, cs , and tb final states. Instead, we consider the process $pp \rightarrow \Phi \rightarrow W^\pm H^\mp \rightarrow W^+W^-A$ where Φ is a heavy neutral Higgs boson, H^\pm is a charged Higgs boson, and A is a light Higgs boson, with mass either below or above the $b\bar{b}$ threshold. The cross-section for this process is typically large when kinematically open since $H^\pm \rightarrow W^\pm A$ can be the dominant decay mode of the charged Higgs. The final state we consider has two leptons and missing energy from the doubly leptonic decay of the W^+W^- and possibly additional jets; it is therefore constrained by existing SM Higgs searches in the W^+W^- channel. We extract these constraints on the cross-section for this process as a function of the masses of the particles involved. We also apply our results specifically to a type-II two Higgs doublet model with an extra Standard-Model-singlet and obtain new and powerful constraints on m_{H^\pm} and $\tan\beta$. We point out that a slightly modified version of this search, with more dedicated cuts, could be used to possibly discover the charged Higgs, either with existing data or in the future.

KEYWORDS: Higgs Physics, Beyond Standard Model

ARXIV EPRINT: [1311.7208](https://arxiv.org/abs/1311.7208)

Contents

1	Introduction	1
2	Charged Higgs production and decay	4
2.1	Our example reference scenario: the type-II two Higgs doublet model with an additional SM singlet	4
2.2	Charged Higgs decays	6
2.3	Heavy neutral Higgs decays	7
2.4	Heavy neutral Higgs production	9
2.5	Total cross-sections	11
3	The constraint from Standard Model $h \rightarrow W^+W^-$ searches	13
3.1	Model independent study	13
3.2	The type-II 2HDM plus singlet case	20
4	Conclusions	22
A	Decay rates	24
A.1	$\Phi \rightarrow \phi W$	24
A.2	Other A_H decays	25
A.3	Other H decays	26
A.4	Other H^\pm decays	27
A.5	Off-shell H^\pm	27
B	Branching ratios	28
C	The Φ width	29
D	CL_s limits	29

1 Introduction

The quest to unveil the mechanism responsible for the breaking of the electroweak symmetry made a huge leap forward with the recent discovery of a scalar particle whose quantum numbers and interactions appear to be compatible, albeit with large uncertainties, with those of the Standard Model (SM) Higgs boson [1, 2]. The presence of a fundamental scalar particle renders electroweak physics sensitive to arbitrarily large scales possibly present in a full theory of electroweak, strong, and gravitational interactions. Solutions to this problem usually entail the introduction of new physics just above the electroweak scale. Amongst others, hints that point to the incomplete nature of the SM are the strong empirical evidence

for particle dark matter, the baryon-antibaryon asymmetry of the universe, and the pattern of neutrino masses and mixing. Even before addressing these problems it is important to realize that while the structure of currently observed gauge interactions is completely dictated by the SM gauge groups alone the pattern of electroweak symmetry breaking is not. In particular, within the context of a perturbative (Higgs) mechanism there are absolutely no “symmetry” reasons for introducing a single doublet (besides the empirical observation that such a choice leads directly to the rather successful Cabibbo-Kobayashi-Maskawa pattern of flavor changing and CP violation). Moreover, it is well known that supersymmetry, one of the most popular extensions of the SM that actually addresses some of the above mentioned problems, requires the introduction of a second Higgs doublet. In view of these observations it is clear that understanding how many fundamental scalars are involved in the electroweak spontaneous symmetry breaking mechanism is one of the most pressing questions we currently face. In particular, any model with at least two doublets contain at least two charged Higgs boson (H^\pm) and at least two extra neutral Higgses. In this paper we investigate a previously overlooked technique that could uncover a charged Higgs from a multi-Higgs scenario.

Direct charged Higgs production in the top-bottom fusion channel typically has cross-sections $\mathcal{O}(1 \text{ pb})$ [3] and discovery would be fairly difficult in this channel [4, 5]. If the charged Higgs mass is lower than the top mass, it is possible to bypass this problem by looking for charged Higgs bosons in top decays ($t \rightarrow H^+b$), taking advantage of the very large $t\bar{t}$ production cross-section. Moreover, most current experimental studies consider only charged Higgs decays to pairs of fermions ($H^+ \rightarrow \tau^+\nu$, $H^+ \rightarrow c\bar{s}$, and $H^+ \rightarrow t\bar{b}$). Under these assumptions ATLAS and CMS were able to place bounds on $\text{BR}(t \rightarrow H^+b)$ at the 1–5 % level [6–9] for $m_{H^\pm} < m_t$.¹ It is well known that the presence of a light neutral Higgs can significantly modify these conclusions. In fact, the $H^+ \rightarrow W^+A$ decay (A being a neutral CP -even or -odd Higgs boson) can easily dominate the charged Higgs decay width if it is kinematically allowed and the A has non-vanishing mixing with one of the neutral components of a Higgs doublet. Such a light neutral pseudoscalar Higgs ($A = a_1$) has been looked for by BaBar [11, 12] in $\Upsilon \rightarrow a_1\gamma \rightarrow (\tau\tau, \mu\mu)\gamma$ decays and by ATLAS [13] and CMS [14] in $pp \rightarrow a_1 \rightarrow \mu\mu$ direct production. These bounds are easily evaded by assuming that the lightest neutral Higgs a_1 has a singlet component. Under this condition, in the context of a type-II two Higgs doublet model (2HDM) with an additional singlet, the $\text{BR}(t \rightarrow bH^+)$ can be as large as $\mathcal{O}(10 \%)$ for $\tan\beta < 6$ ($\tan\beta$ being the ratio of the vacuum expectation values of the neutral components of the two Higgs doublets) even for a_1 as light as 8 GeV [15]. Tripleton events in $t\bar{t}$ production can be used to discover at the LHC a charged Higgs produced in top decays and decaying to $W^\pm A$ with as little as 20 fb^{-1} integrated luminosity at 8 TeV center of mass energy.

At the LHC the charged Higgs can be alternatively produced in the decay of a heavier neutral Higgs (Φ). Heavy neutral Higgs bosons are dominantly produced in gluon-gluon fusion (ggF) with a significant cross-section, leading to sizable charged Higgs production rates. For our somewhat model independent analysis, we ignore possible mass relations amongst the various Higgs bosons as they depend on the exact Lagrangian of the model. In

¹A preliminary result of ATLAS reduces this to $\mathcal{O}(0.1\%)$ [10].

the presence of a light Higgs A the decay $H^+ \rightarrow W^+ A$ is mostly dominant for $m_{H^+} < m_t$ and remains comparable to $H^+ \rightarrow t\bar{b}$ otherwise, depending on the values of the various parameters. Note that the $H^+ \rightarrow W^+ h_1$ decay (we take h_1 be the particle recently discovered at the LHC) vanishes in the limit that h_1 is completely SM-like.

In this study we consider the process $pp \rightarrow \Phi \rightarrow H^\pm W^\mp \rightarrow W^+ W^- A$ as shown in figure 1. The constraints we derive are valid for m_A not too far above the $b\bar{b}$ threshold, where the decay $A \rightarrow b\bar{b}$ should be dominant (they are also approximately valid below this threshold, as discussed in section 3.1). At large transverse momentum of the $b\bar{b}$ pair (transverse momentum relevant for the event selection), the angular separation of the two bottom quarks is small and they are combined into a single jet.² The final state we consider is, therefore, constrained by the standard $h \rightarrow WW$ searches by CMS [21] (with 19.5 fb^{-1} at 8 TeV and 4.9 fb^{-1} at 7 TeV) and ATLAS [22] (with 20.7 fb^{-1} at 8 TeV and 4.6 fb^{-1} at 7 TeV). We use the data provided in the CMS analysis to place bounds.

The impact of the experimental cuts depends on the kinematics and is controlled by the masses of the three intermediate Higgs bosons only. We therefore derive constraints on the LHC cross-section for the considered process that depend only on the masses of the relevant particles and not on other model-dependent parameters or the CP nature of the neutral Higgs bosons Φ and A . We also apply our results to a CP conserving type-II 2HDM with an additional singlet [23–26]. In this framework the lightest neutral Higgs (A) is identified with the lightest CP -odd eigenstate a_1 and the heavy Higgs (Φ) with the heavy CP -odd Higgs a_2 . To the extent that the $a_2 \rightarrow H^+ W^-$ decay dominates over other decays involving Higgs bosons (and this can easily be the case) and decays to other beyond-the-Standard-Model particles our bounds depend on only m_{a_2} , m_{H^\pm} , m_{a_1} , $\tan(\beta)$, and ϑ_A (the mixing angle in the CP -odd sector). A novelty in our analysis is the exclusion of parameter space regions at low $\tan \beta$. The 8 TeV LHC data analyzed so far allow one, using our approach, to probe only a relatively light charged Higgs (roughly below the $t\bar{b}$ threshold); in the future, regions in parameter space with a heavy charged Higgs will be accessible as well. We also consider the same scenario but with one of the CP -even states (h_2) as the heavy neutral state Φ . The types of scenario we consider and constrain can easily be consistent with constraints on the custodial symmetry breaking parameter $\rho = M_W^2 / (M_Z^2 \cos^2 \vartheta_W)$.

The paper is organized as follows. In section 2 we discuss the production and decay cross-section for our signal. In particular, after introducing the type-II 2HDM + singlet scenario in section 2.1 we discuss charged (H^\pm) and neutral (Φ) Higgs decays in sections 2.2 and 2.3, the $gg \rightarrow \Phi$ production cross-section in section 2.4, and the total cross-section (production times branching ratios) in section 2.5. In section 3.1 we show the upper bound on the total cross-section that we extract from SM Higgs to WW searches. In section 3.2 we specialize the previous results to our reference scenario (type-II 2HDM with an additional singlet, $\Phi = a_2$ and $A = a_1$) and present the new exclusion bounds at low $\tan \beta$ that we extract. Finally, in section 4, we present our conclusions.

²The ATLAS collaboration recently announced the results of a search for a similar process, where the light state A is identified with the 125 GeV CP -even Higgs, dominantly decaying into two separable b -jets [16]. They consider the semileptonic decay of the WW . This was based on the suggestion put forward in ref. [17]. See also ref. [18–20] which includes the non-resonant production of $H^\pm W^\mp$.

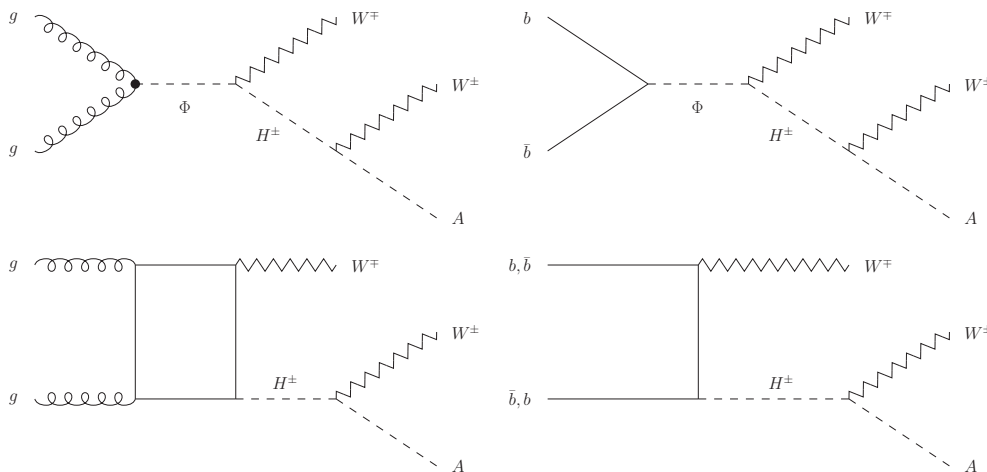


Figure 1. Feynman diagrams for $pp \rightarrow W^+W^-A$. If an intermediate on-shell Φ is present, the upper diagrams dominate the cross-section. The bottom fusion diagram (upper right) is only sizable at large $\tan\beta$.

2 Charged Higgs production and decay

In the multi-Higgs models containing at least two $SU(2)$ doublets, there can exist a heavy neutral Higgs (Φ) which decays into $H^\pm W^\mp$. The process is shown in figure 1 with the charged Higgs decaying to a light neutral Higgs A and another W boson. Looking for this process could be the first way the charged Higgs is discovered and its properties measured. This is due to the large value of $\sigma(gg \rightarrow \Phi \rightarrow W^\mp H^\pm \rightarrow W^\mp W^\pm A)$ when all particles can be on-shell. In this section, we focus on showing how large such a production cross-section times the branching ratios can be, especially in the context of the type-II 2HDM + singlet scenario. In the following subsections, we show that the branching ratios of $H^\pm \rightarrow W^\pm A$ and $\Phi \rightarrow H^\pm W^\mp$ can be sizable when kinematics allow and the production cross-section of Φ is roughly as large as that of the SM Higgs. Our general cross-section constraints depend only on the masses of the particles involved and will be discussed in the next section. For the specific type-II 2HDM + singlet reference scenario we can constrain physical parameters (the masses; $\tan\beta$; and ϑ_A , the mixing angle in the CP -odd sector) without specifying the Lagrangian in the Higgs sector and we assume no mass relations among the Higgs bosons states.

2.1 Our example reference scenario: the type-II two Higgs doublet model with an additional SM singlet

Considering the type-II 2HDM with one extra complex singlet scalar we define the field-space basis by

$$\begin{aligned}
 \begin{pmatrix} h \\ H \\ N \end{pmatrix} &= \begin{pmatrix} \cos(\beta) & \sin(\beta) & 0 \\ -\sin(\beta) & \cos(\beta) & 0 \\ 0 & 0 & 1 \end{pmatrix} \begin{pmatrix} \sqrt{2}\Re H_d^0 - v_d \\ \sqrt{2}\Re H_u^0 - v_u \\ \sqrt{2}\Re S - s \end{pmatrix}, \\
 A_H &= \sqrt{2}(\cos(\beta)\Im H_u^0 - \sin(\beta)\Im H_d^0), \\
 A_N &= \sqrt{2}\Im S,
 \end{aligned}
 \tag{2.1}$$

where S is the SM-singlet and s is its possibly non-zero VEV and $\tan\beta = v_u/v_d$. In this convention, h interacts exactly as a SM Higgs in both gauge and Yukawa interactions; H has no coupling to the gauge boson pairs and interacts with the up-type quarks (down-type quarks and charged leptons) with couplings multiplied by $\cot\beta$ ($\tan\beta$) relative to the SM Higgs couplings. The orthogonal state to A_H and A_N is the Z -boson Goldstone mode.

We define an orthogonal matrix \mathcal{U} that transforms the CP -even field-space basis states into the CP -even mass eigenstates

$$\begin{pmatrix} h_1 \\ h_2 \\ h_3 \end{pmatrix} = \begin{pmatrix} \mathcal{U}_{1h} & \mathcal{U}_{1H} & \mathcal{U}_{1N} \\ \mathcal{U}_{2h} & \mathcal{U}_{2H} & \mathcal{U}_{2N} \\ \mathcal{U}_{3h} & \mathcal{U}_{3H} & \mathcal{U}_{3N} \end{pmatrix} \begin{pmatrix} h \\ H \\ N \end{pmatrix} \quad (2.2)$$

We define h_1 to be the particle recently discovered at the LHC and do not demand that h_i are ordered by mass. The overlap of h_1 with the SM-like state h appears to be large. The mass eigenstates h_2 and h_3 are then approximately superpositions of H and N only. When we consider h_2 to be the heavy state produced from pp collisions \mathcal{U}_{2H} , the overlap of h_2 and H , becomes an important parameter.

We define a mixing angle between the CP -odd mass eigenstates ϑ_A by

$$\begin{pmatrix} a_1 \\ a_2 \end{pmatrix} = \begin{pmatrix} \cos(\vartheta_A) & \sin(\vartheta_A) \\ -\sin(\vartheta_A) & \cos(\vartheta_A) \end{pmatrix} \begin{pmatrix} A_H \\ A_N \end{pmatrix}, \quad (2.3)$$

where a_1 is defined to be the lighter state.

The state a_1 is identified with A in our process $pp \rightarrow \Phi \rightarrow W^\mp H^\pm \rightarrow W^\mp W^\pm A$. We mainly consider Φ to be the other CP -odd state a_2 but also consider the case where it is one of the CP -even states, defined to be h_2 .

When the mass of a_1 is below the $b\bar{b}$ threshold the constraints from the decay $\Upsilon \rightarrow a_1\gamma \rightarrow (\tau\tau, \mu\mu)\gamma$ at BaBar and the light scalar search at the LHC ($pp \rightarrow a_1 \rightarrow \mu\mu$) lead to an upper bound on $\cos\vartheta_A \tan\beta$ of about 0.5 [13, 14, 27]. We concentrate on two benchmark a_1 masses: 8 and 15 GeV. Our results depend weakly on this mass; therefore, the 8 GeV threshold is representative of masses just below and just above the $b\bar{b}$ threshold, where the constraint $\cos\vartheta_A \tan\beta \lesssim 0.5$ does and does not apply respectively.

In the parameter region where one of the CP -even Higgses $h_{2,3}$ is lighter than 150 GeV, the direct search bounds for light neutral Higgses in associated production $h_i a_1$ ($i = 2, 3$) at LEP-II can be considered [28]. The final states can be, for example, $4b$ or $2b2\tau$. However, even for $h_{2,3}$ light enough for this associated production to be possible, the cross-section is proportional to the doublet component of a_1 and is usually small in our scenario. The upper bounds in [28] constrain $\cos^2(\vartheta_A) \mathcal{U}_{iH}^2$ ($i = 2, 3$) times branching ratios as a function of the masses, but this can easily be small enough to be consistent with the bounds. We therefore ignore the LEP-II constraint throughout this paper.

The masses of the extra neutral and charged Higgs bosons can affect the custodial symmetry breaking parameter $\rho = M_W^2/(M_Z^2 \cos^2\vartheta_W)$, where ϑ_W is the weak mixing angle. Since we are considering extensions of the Higgs sector involving only SU(2) doublets and singlets, contributions to $\Delta\rho \equiv \rho - 1$ appear only at loop level. In our type-II 2HDM +

singlet reference scenario with $\Phi = a_2$ (mostly doublet), $A = a_1$ (mostly singlet) and the SM-like Higgs boson discovered at the LHC identified with h_1 , $\Delta\rho$ depends also on the two remaining CP -even states $h_{2,3}$. For a simple demonstration of the $\Delta\rho$ constraint, we assume that one of these two states is completely doublet (the field-space basis state H defined above). Then the main contributions to the vacuum polarization of the W^\pm by $H^\pm - a_2$ and $H^\pm - H$ loops need to be cancelled by that of the Z by $H - a_2$ loop. Therefore one can roughly expect the contribution due to the mass difference between H^\pm and a_2 can be cancelled by that between H and a_2 , while making that of the $H^\pm - H$ loop to the W boson small. (In the 2HDM, complete contributions to the oblique parameters are well depicted in the appendix D of the reference [29].) In figure 2, we show the H mass range allowed at 95 % C.L. by the present determination of $\Delta\rho$ [30] for given masses of a_2 and H^\pm . The solid (blue) contours give the maximum value of m_H required to satisfy the experimental $\Delta\rho$ constraint; the dashed (green) contours show the difference between the maximum and minimum m_H required and are therefore a measure of the (low) fine tuning between m_H and m_{H^\pm} that we require. We find that in the parameter space where our process is dominant ($m_\Phi - m_{H^\pm} \gtrsim M_W$) the contributions to $\Delta\rho$ can easily be compensated by the contributions of other Higgs states, although the fine tuning between m_{H^+} and m_H increases as m_{a_2} does. It is quite possible for the H state to remain unconstrained by LHC Higgs searches. Based on this result, we simply ignore the $\Delta\rho$ constraint throughout this paper. We also ignore possible mass relations amongst the various Higgs bosons which depend on the exact details of the Higgs sector Lagrangian.

2.2 Charged Higgs decays

When the charged Higgs is lighter than the top quark (light charged Higgs), investigating only the usual $\tau\nu$ or $c\bar{s}$ final states from its decay may not be enough for discovery. This is because the process $H^+ \rightarrow W^+A$, whose decay rate is proportional to $m_{H^+}^3$, can easily dominate over the $\tau^+\nu$ and $c\bar{s}$ final states. The detailed analysis of the light charged Higgs from the top quark decay in the context of the type-II 2HDM + singlet is shown in ref. [15], where the lightest CP odd neutral Higgs a_1 is the particle A . The main factors determining the $\text{BR}(H^+ \rightarrow W^+a_1)$ are the $SU(2)$ doublet fraction (at the amplitude level) in a_1 ($\cos\vartheta_A$) and $\tan\beta$. According to that analysis, $\text{BR}(H^+ \rightarrow W^+a_1)$ rapidly approaches unity for $m_{H^+} > M_W + m_{a_1}$ even when the light Higgs a_1 is highly singlet-like, as long as $\tan\beta$ is small.

For a charged Higgs heavier than the top quark (heavy charged Higgs), the channel $H^+ \rightarrow t\bar{b}$ opens to compete with the process $H^+ \rightarrow W^+A$. In the context of the type-II 2HDM + singlet, we show the dependence of the $\text{BR}(H^+ \rightarrow W^+a_1)$ on $\cos\vartheta_A$ and $\tan\beta$ in figure 3. For low $\tan\beta \lesssim 5$, the value of $\Gamma(H^+ \rightarrow t\bar{b})$ is dominantly determined by the $(m_t/v)^2 \cot^2\beta$ term, so the $\text{BR}(H^+ \rightarrow W^+a_1)$ increases for larger $\tan\beta$. (See appendix A for the detailed formulae.) Above threshold the ratio of the $H^+ \rightarrow W^+a_1$ and $H^+ \rightarrow t\bar{b}$ decay rates is proportional to $\cos^2\vartheta_A \tan^2\beta m_{H^+}^2$. For $m_{a_1} = 8 \text{ GeV}$ the constraint $\cos\vartheta_A \tan\beta \lesssim 0.5$ applies and hence $\text{BR}(H^+ \rightarrow W^+a_1)$ is at most around 30 % for $m_{H^+} < 400 \text{ GeV}$, increasing for larger charged Higgs masses. On the other hand, we do not need to consider this bound when a_1 is heavier than about 9 GeV, so in this case the

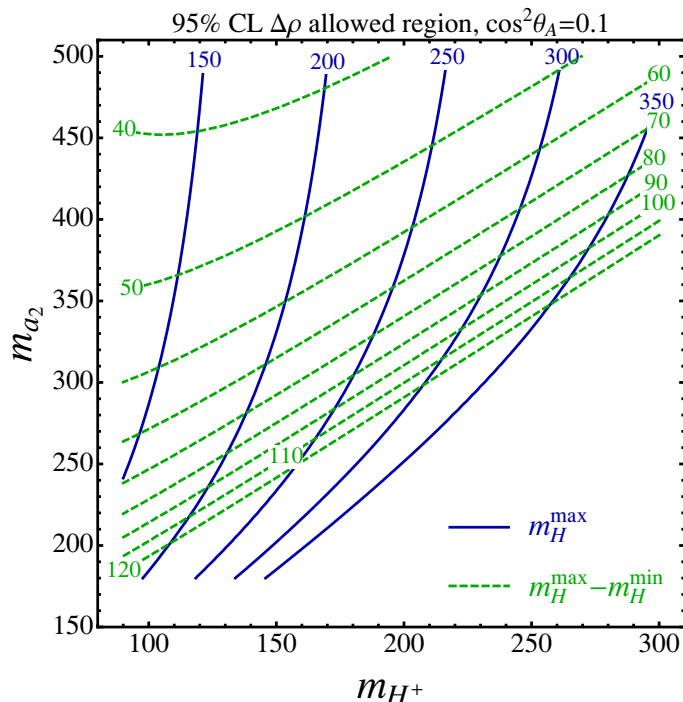


Figure 2. Maximum value (solid blue) and range (dashed green) of the extra neutral Higgs (H) mass required to satisfy at 95% C.L. the $\Delta\rho$ constraint [30]. This is for the type-II 2HDM + singlet model discussed in the text.

$\text{BR}(H^+ \rightarrow W^+ a_1)$ can be larger than 0.5, corresponding to larger values of $\cos\vartheta_A \tan\beta$ when m_{a_1} is set to 15 GeV in figure 3. Far above thresholds and at low $\tan\beta$ we have

$$\frac{\Gamma(H^+ \rightarrow W^+ a_1)}{\Gamma(H^+ \rightarrow t\bar{b})} \rightarrow \frac{m_{H^\pm}^2 \tan^2 \beta \cos^2(\vartheta_A)}{6m_t^2}. \quad (2.4)$$

Consequently, $\text{BR}(H^\pm \rightarrow W^\pm a_1)$ can be still larger than 0.5 even after the on-shell $H^+ \rightarrow t\bar{b}$ decay opens, as long as a_1 is heavier than about 9 GeV. For large values of $\tan\beta$ ($\gg 7$) the $\tan\beta$ dependence of $\text{BR}(H^+ \rightarrow W^+ a_1)$ is reversed since the $(m_b/v)^2 \tan^2 \beta$ term in $\Gamma(H^+ \rightarrow t\bar{b})$ is dominant.

2.3 Heavy neutral Higgs decays

The $\Phi \rightarrow W^\pm H^\mp$ decay can easily dominate over decays into SM fermions, including top quarks. In the type II 2HDM + singlet scenario we set $A = a_1$ and $\Phi = a_2$ (which is the heavy CP -odd Higgs); then figure 4 shows how $\text{BR}(a_2 \rightarrow H^\pm W^\mp)$ varies with $\tan\beta$ and the various masses. For small $\tan\beta$, the branching ratio is affected by the partial width $a_2 \rightarrow t\bar{t}$, whose rate depends on $\cot^2 \beta$. Since we only consider this decay and decays into SM fermions, all taking place via the doublet (A_H) component of a_2 , the $\sin^2(\vartheta_A)$ dependence cancels out of all of the branching ratios of a_2 . For our reference type-II 2HDM + singlet scenario we assume the possible decays $a_2 \rightarrow h_i Z$ and $a_2 \rightarrow h_i a_1$ to be subdominant compared to $a_2 \rightarrow H^\pm W^\mp$, where h_i is a CP -even neutral Higgs. This is

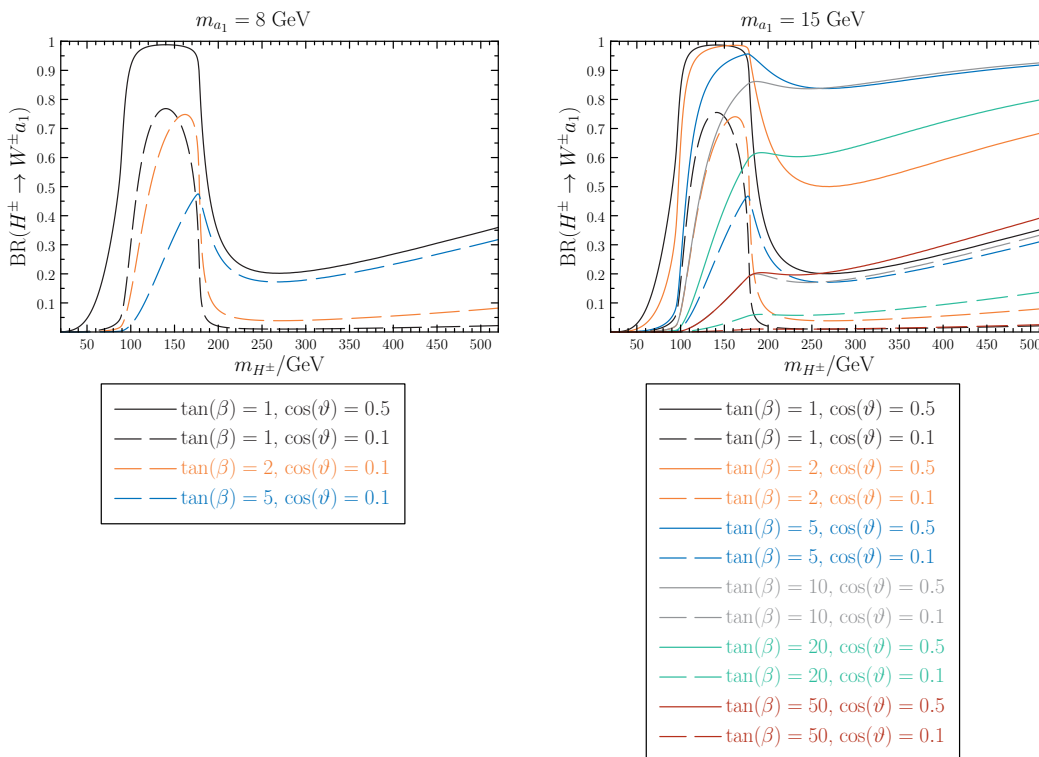


Figure 3. The $\text{BR}(H^\pm \rightarrow W^\pm a_1)$. Off-shell tops and W s are included. Above threshold the ratio of the $H^+ \rightarrow W^+ a_1$ and $H^+ \rightarrow t\bar{b}$ decay rates is proportional to $\cos^2 \vartheta_A \tan^2 \beta m_{H^\pm}^2$ for small $\tan \beta$ ($\lesssim 5$). For $m_{a_1} = 8$ GeV, the constraint from the decay $\Upsilon \rightarrow a_1 \gamma$ at BABAR and the light scalar search at CMS lead to an upper bound on $\cos \vartheta_A \tan \beta$ of about 0.5 [13, 14, 27]. In this region the black solid line therefore represents the maximum possible branching ratio. For $m_{a_1} = 15$ GeV these bounds do not apply. For $\tan \beta \gg 7$, the $\tan \beta$ dependence of $\text{BR}(H^+ \rightarrow W^+ a_1)$ is reversed since the $(m_b/v)^2 \tan^2 \beta$ term in $\Gamma(H^+ \rightarrow t\bar{b})$ is dominant.

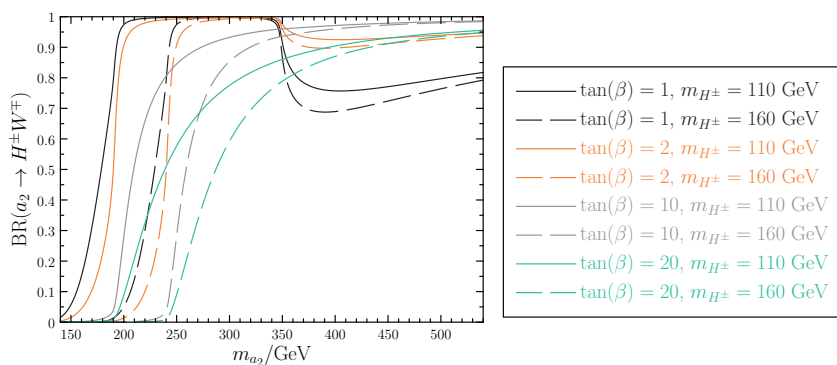


Figure 4. The $\text{BR}(a_2 \rightarrow H^\pm W^\mp)$. Other than this channel we only consider decays to fermions, including off-shell tops. In this case all decays take place via the doublet (A_H) component of a_2 and the $\sin^2 \vartheta_A$ dependence cancels out of all branching ratios.

in order to reduce the number of parameters relevant for determining cross-section times branching ratios in this reference scenario (to be compared to the general bounds on this cross-section times branching ratios that we derive). The processes $a_2 \rightarrow h_i a_1$ are model

dependent even within the type II 2HDM + singlet scenario. As for the possible decay modes $a_2 \rightarrow h_i Z$: the more SM-like the 125 GeV particle discovered at the LHC (h_1) is (the more $h_1 \sim h$, see section 2.1), the more suppressed the decay to $h_1 Z$ will be. On the other hand the other final states $h_{i>1} Z$ can reduce the relevant $\text{BR}(a_2 \rightarrow H^\pm W^\mp)$ by up to about 1/3, if we consider that the $\Delta\rho$ constraint requires very approximate mass degeneracy of H^\pm and any state significantly overlapping with H (The width to ZH is equal to the width to H^+W^- if one ignores the phase-space factor). The results we present (e.g. the new bound in the $(\tan\beta, m_{H^\pm})$ plane for $m_{a_2} \sim 2m_t$) are not much affected by the presence of this decay mode and we will neglect it altogether in the following. Far above thresholds we have

$$\frac{\Gamma(a_2 \rightarrow H^+W^-) + \Gamma(a_2 \rightarrow H^-W^+)}{\Gamma(a_2 \rightarrow t\bar{t})} \rightarrow \frac{m_{a_2}^2 \tan^2\beta}{3m_t^2}. \tag{2.5}$$

Finally let us comment on the possibility of taking Φ to be the CP -even state h_2 . As can be seen from the results collected in appendix A, the decay rates are very similar to those for a CP -odd Higgs ($\Phi = a_2$ case). For this case we similarly neglect the two-body decays to Za_i , $a_i a_j$, and $h_1 h_1$. In this case too, the mixing-matrix-element-squared \mathcal{U}_{2H}^2 (see section 2.1) dependence cancels out of all branching ratios and appears only in the production cross-section.

2.4 Heavy neutral Higgs production

The dominant production mechanism for h_{SM} at the LHC is ggF mediated by quark loops, mainly dominated by the top quark loop due to its large Yukawa coupling. The production cross-section of Φ depends on its modified couplings to up- and down-type quarks. The A_H and H interaction states, defined in section 2.1, have couplings to up-type quarks suppressed by $1/\tan\beta$ and couplings to down-type quarks enhanced by $\tan\beta$. The production of a_2 is also modified at leading order since there are different form factors for the scalar and pseudoscalar couplings; CP -even Higgs bosons couple to fermions via scalar couplings and CP -odd couple via pseudoscalar.

At leading order the ggF production cross-section for a scalar or pseudoscalar ϕ is proportional to

$$S_0^\phi = \left| \frac{3}{4} \sum_q g_q^\phi A_{1/2}^\phi \left(\frac{m_\phi^2}{4m_q^2} \right) \right|^2, \tag{2.6}$$

where g^ϕ is the relative coupling to the quark q (relative to that of the SM Higgs) and m_q is the quark pole mass. The form factors $A_{1/2}^\phi$ are equal to

$$A_{1/2}^{\mathcal{H}}(\tau) = 2[\tau + (\tau - 1)f(\tau)]/\tau^2 \quad \text{and} \tag{2.7}$$

$$A_{1/2}^{\mathcal{A}}(\tau) = 2f(\tau)/\tau \tag{2.8}$$

for scalar and pseudoscalar couplings respectively. The universal scaling function f can be found, for example, in ref. [31, 32]. In the limit $\tau \rightarrow 0$ the functions $A_{1/2}^{\mathcal{H}}(\tau)$ and

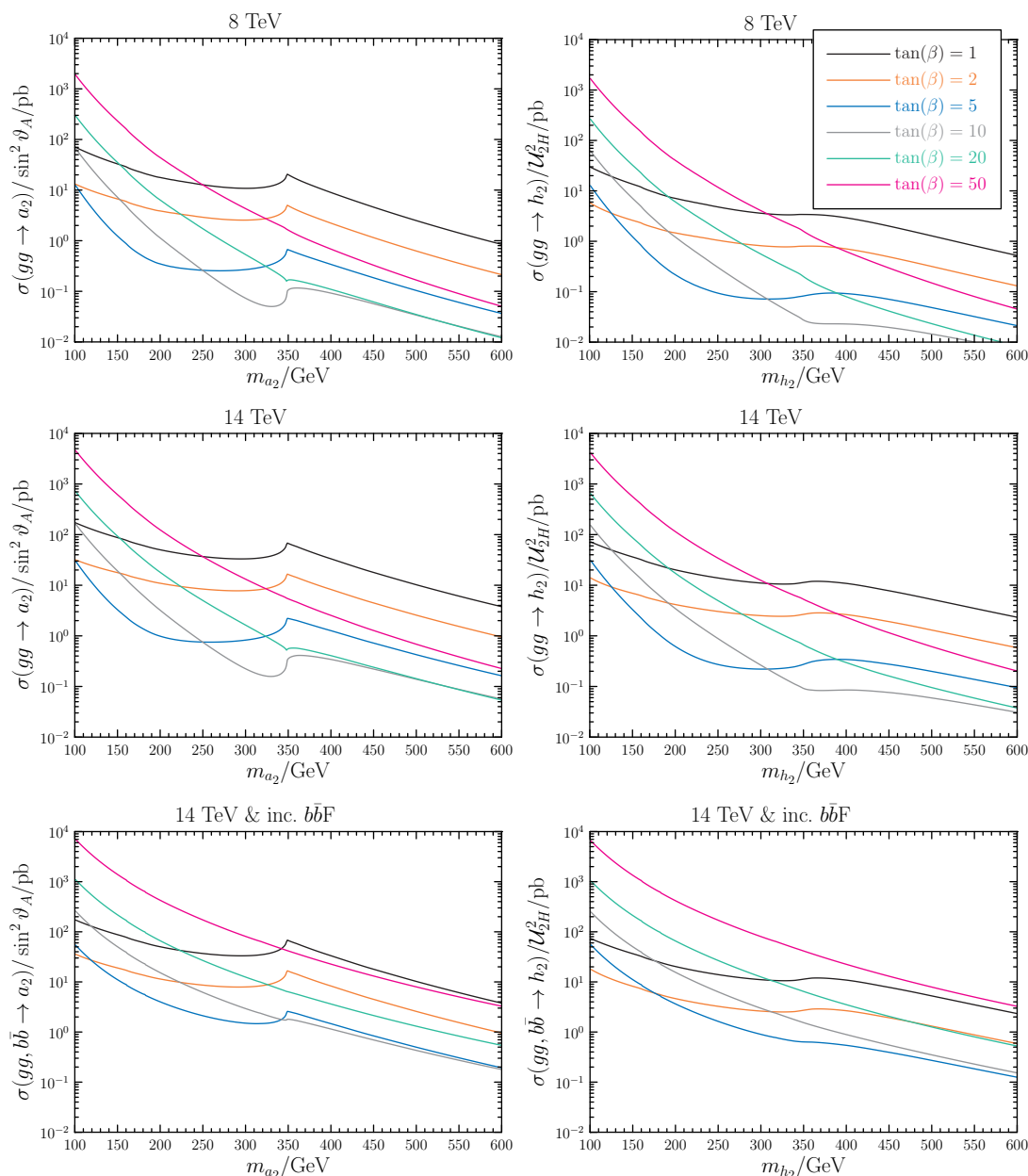


Figure 5. The LHC ggF production cross-sections at (above) 8 TeV and (central) 14 TeV for (left) the CP -odd state of the type-II 2HDM A_H and (right) the CP -even state of the type-II 2HDM orthogonal to the SM-like state H , for various masses and values of $\tan\beta$. Below: the cross-sections at 14 TeV summing the contributions from ggF and $b\bar{b}F$.

$A_{1/2}^A(\tau)$ tend to $4/3$ and 2 respectively, so the ratio squared tends to 2.25 . The K-factors (the ratios of cross-sections to their leading order approximations) are typically around 1.8 and cannot be neglected. In this work, to calculate the CP -odd (A_H) and CP -even (H) doublet production we take the 8 and 14 TeV ggF production cross-sections recommended by the CERN Higgs Working Group [33] (calculated at NNLL QCD and NLO EW) for a

SM Higgs of the same mass M and multiply by the ratio

$$\frac{\left| \sum_q g_q A_{1/2}^{\mathcal{A}, \mathcal{H}} \left(\frac{M^2}{4m_q^2} \right) \right|^2}{\left| \sum_q A_{1/2}^{\mathcal{H}} \left(\frac{M^2}{4m_q^2} \right) \right|^2}, \quad (2.9)$$

where $g_q = \{\tan(\beta), \cot(\beta)\}$ for {down-, up-} type quarks q . (This is also the approach taken in ref. [34].) We checked the consistency of this approach using the Fortran code HIGLU [35, 36] at NNLO QCD and NLO EW level with the CTEQ6L parton distribution functions. For the cases of a_2 and h_2 the cross-section will have an additional suppression of approximately $\sin^2 \vartheta_A$ and \mathcal{U}_{2H}^2 respectively, since only the doublet admixture couples to quarks. These production cross-sections at 8 and 14 TeV are shown in figure 5. Note that for A_H there is a sharp peak around the $t\bar{t}$ threshold region for small $\tan \beta$ (where the top loop dominates) due to the pseudoscalar form factor. Below the $t\bar{t}$ threshold the shapes of the curves are highly dependent on whether the top or bottom loop dominates. This is because the form factor looks quite different depending on whether one is above threshold (bottom loop case) or below threshold (top loop case).

At moderate and large $\tan \beta$ (i.e. $\tan \beta \gtrsim 5$) heavy neutral Higgs production in bottom fusion ($b\bar{b}F$, upper right plot in figure 1) can be larger than in gluon fusion (ggF , upper left plot in figure 1). In fact, although the probability to find a bottom quark in a proton is small (whereas gluons have the largest parton distribution function at LHC center-of-mass energies), this is compensated by the fact that $b\bar{b}F$ is an electroweak tree-level process (whereas the ggF is one-loop suppressed). In the lower plots of figure 5 we show the impact of adding the $b\bar{b}F$ cross-section (calculated using FeynHiggs [37–40]) to the ggF one for $\sqrt{s} = 14$ TeV; clearly the effect is sizable only for large values of $\tan \beta \gtrsim 10$. Note that at small $\tan \beta$ ggF is large and dominant and that at large $\tan \beta$ $b\bar{b}F$ controls the cross-section; at intermediate values of $\tan \beta \sim 5$ the ggF suppression is not yet compensated by the $b\bar{b}F$ enhancement and we find relatively small cross-sections.

2.5 Total cross-sections

Combining the previous results, we can obtain the complete cross-section times branching ratios $\sigma(gg \rightarrow a_2 \rightarrow W^+W^- a_1)$ at 8 TeV in figure 6 for various masses and values of $\tan \beta$ and $\cos \vartheta_A$. For small $\tan \beta$, we can easily obtain a total cross-section times branching ratios $\mathcal{O}(\text{pb})$, which is comparable to the SM Higgs production times $\text{BR}(h_{\text{SM}} \rightarrow W^+W^-)$. Hence the LHC Higgs search result can constrain the maximum total cross-section of our process, as will be discussed in the next section. For very large $\tan \beta$ ($\gtrsim 20$) our study is not very sensitive because the $\tan \beta$ dependence of the a_2 production cross-section (responsible for the enhancement of the latter at large $\tan \beta$) is compensated by the $\tan \beta$ suppression of the branching ratio $\text{BR}(a_2 \rightarrow W^+W^- a_1)$. The complete branching ratios $\text{BR}(a_2 \rightarrow W^+W^- a_1)$ are calculated as outlined in appendix B and are shown in figure 7.

For comparison, we also show the expected total cross-section at 14 TeV for both $\Phi = a_2$ and $\Phi = h_2$ in figures 8 and 9 respectively. Note that in these plots we add the ggF and $b\bar{b}F$ production cross-sections. The most important effect of adding the latter is

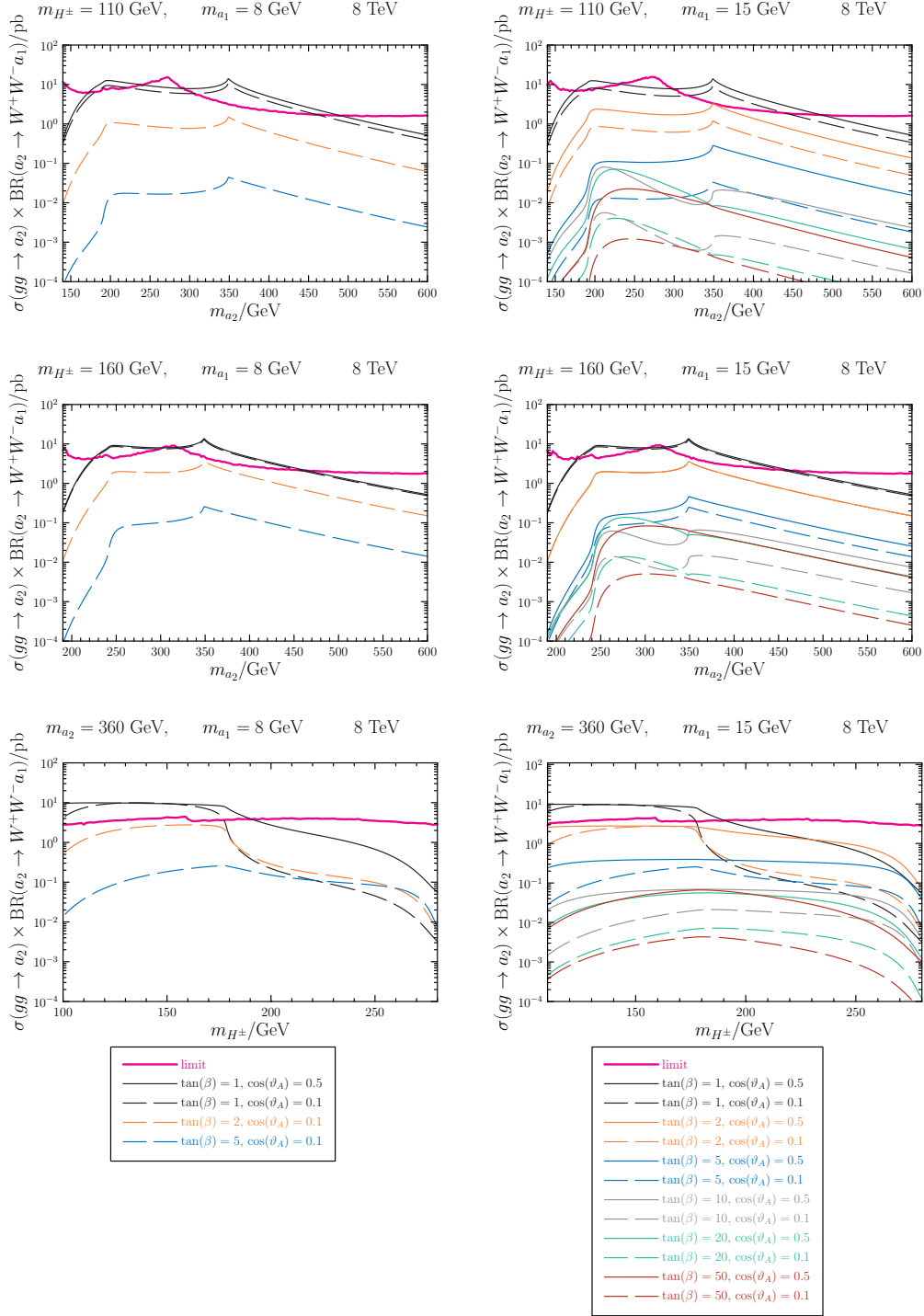


Figure 6. The complete cross-section $\sigma(gg \rightarrow a_2 \rightarrow W^+W^-a_1)$ at 8 TeV. The magenta lines are the upper limits derived in section 3.1.

the flattening of the total cross-section for $\tan \beta \gtrsim 5$; therefore, once we achieve sensitivity to $\tan \beta \sim 5$ we expect to be sensitive to all values of $\tan \beta$ (depending on $\cos \theta_A$). When $\Phi = h_2$, the complete cross-section $\sigma(gg \rightarrow h_2 \rightarrow W^+W^-a_1)$ divided by the mixing-

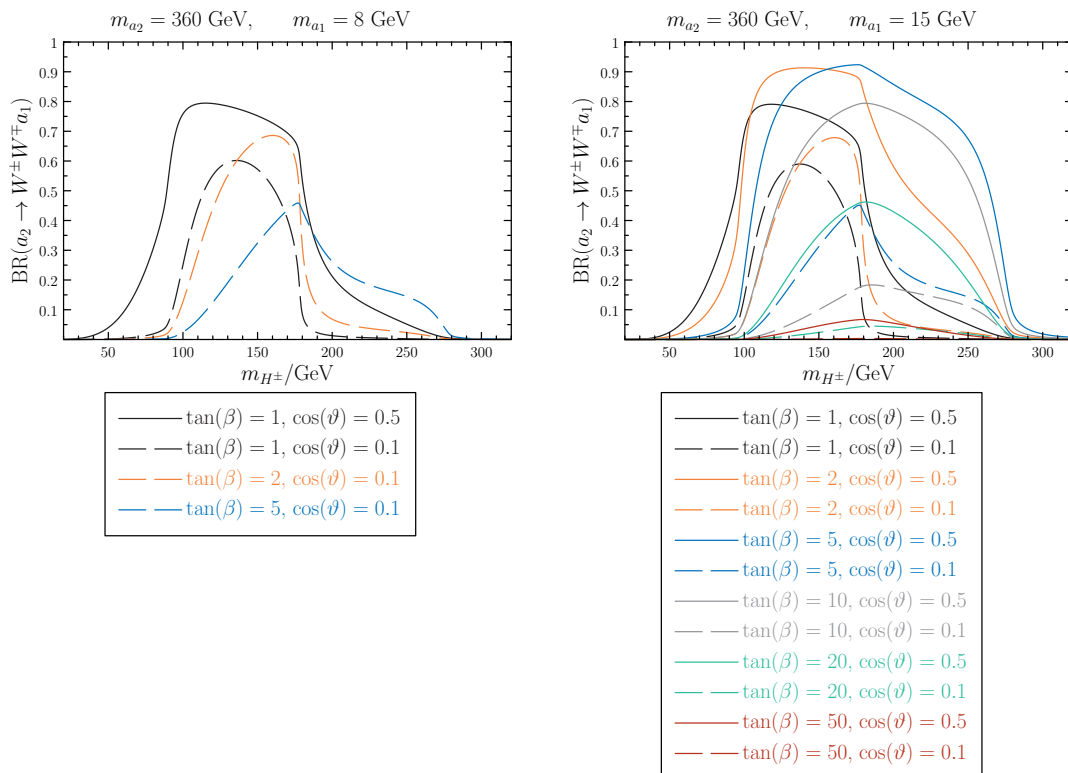


Figure 7. The complete $\text{BR}(a_2 \rightarrow W^+W^-a_1)$.

element-squared \mathcal{U}_{2H}^2 is shown. We show that it is possible to have total cross-sections $\mathcal{O}(10 \text{ pb})$ in some regions of the parameter space. In these figures we include also a heavier charged Higgs masses, above the tb threshold.

In this method of estimating the total cross-section, multiplying the production cross-section by the branching ratios, the non-zero width of the heavy state Φ is neglected. We check that for m_Φ above the $H^\pm W^\mp$ threshold, going beyond the zero-width approximation for Φ is a numerically small effect in the parameter space we consider. Below the $H^\pm W^\mp$ threshold the finite width effects can be important if the width of Φ is already comparable to the widths of H^\pm and W^\mp (the dominant contribution can come from Φ going off-shell rather than H^\pm or W^\mp). We find that this can only occur at extreme values of $\tan\beta$ ($\gg 20$ or ~ 1 if $m_\Phi > 2m_t$). In these cases our method can underestimate the below threshold (off-shell) total cross-section. See appendix C for more details of the Φ width. Our zero-width approximation for the heavy state Φ does not affect the limits that we derive. (For the kinematics the Φ finite width effects are included.)

3 The constraint from Standard Model $h \rightarrow W^+W^-$ searches

3.1 Model independent study

The CMS collaboration observed a SM Higgs signal in the $W^+W^- \rightarrow \ell^+\ell^-\nu\bar{\nu}$ channel (final states with zero jets or one jet were included) with a mass of approximately 125 GeV [21]

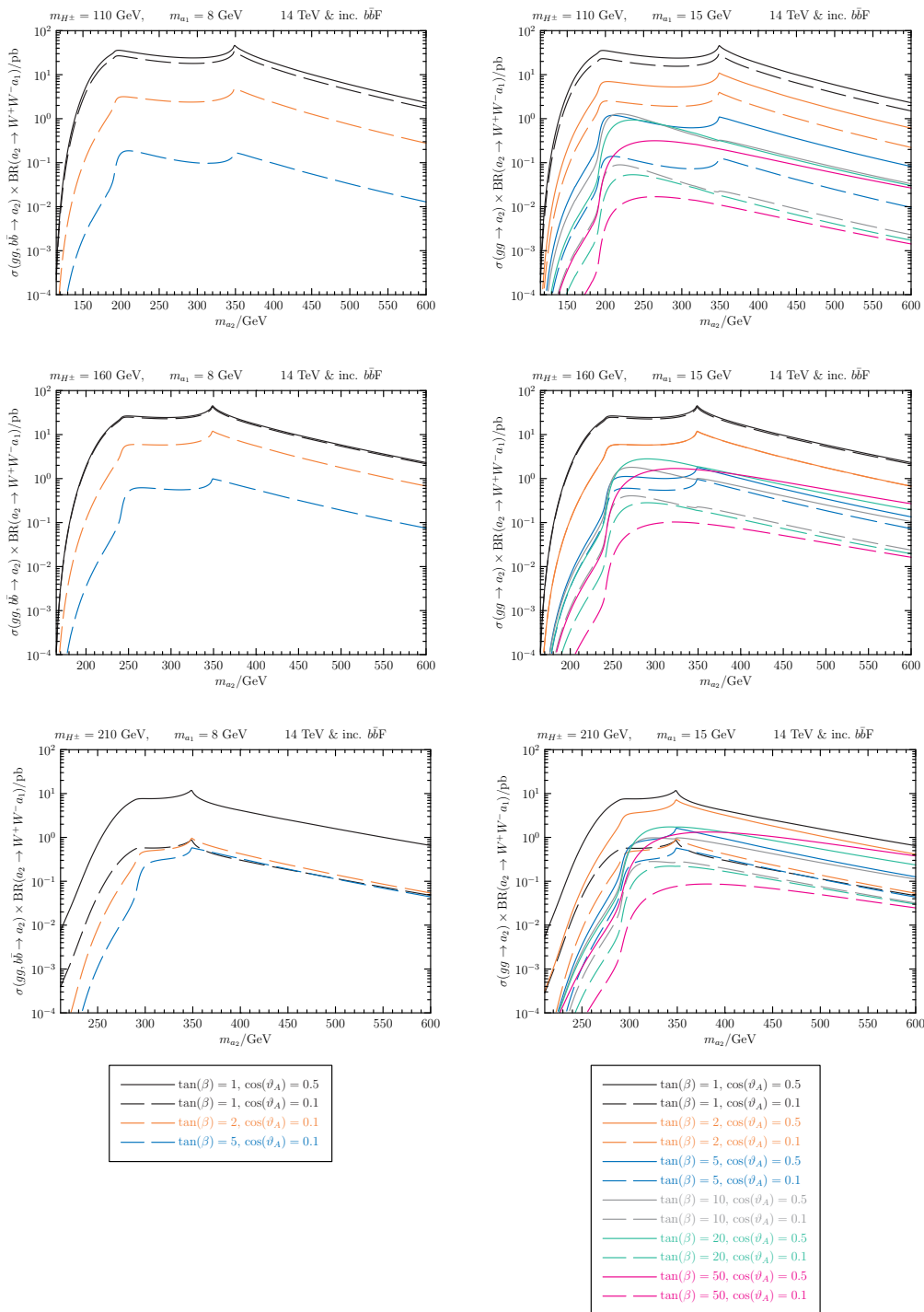


Figure 8. The complete cross-section times branching ratios $\sigma(gg, b\bar{b} \rightarrow a_2 \rightarrow W^+W^-a_1)$ at 14 TeV. The contribution from $b\bar{b}F$ is added to the contribution from ggF .

at a significance of 4σ . CMS also provides an exclusion bound for a SM Higgs bosons in the mass range 128–600 GeV at 95 % confidence level (C.L.). The process that we are considering ($pp \rightarrow W^+W^-A$) leads to a very similar final state, the only difference being

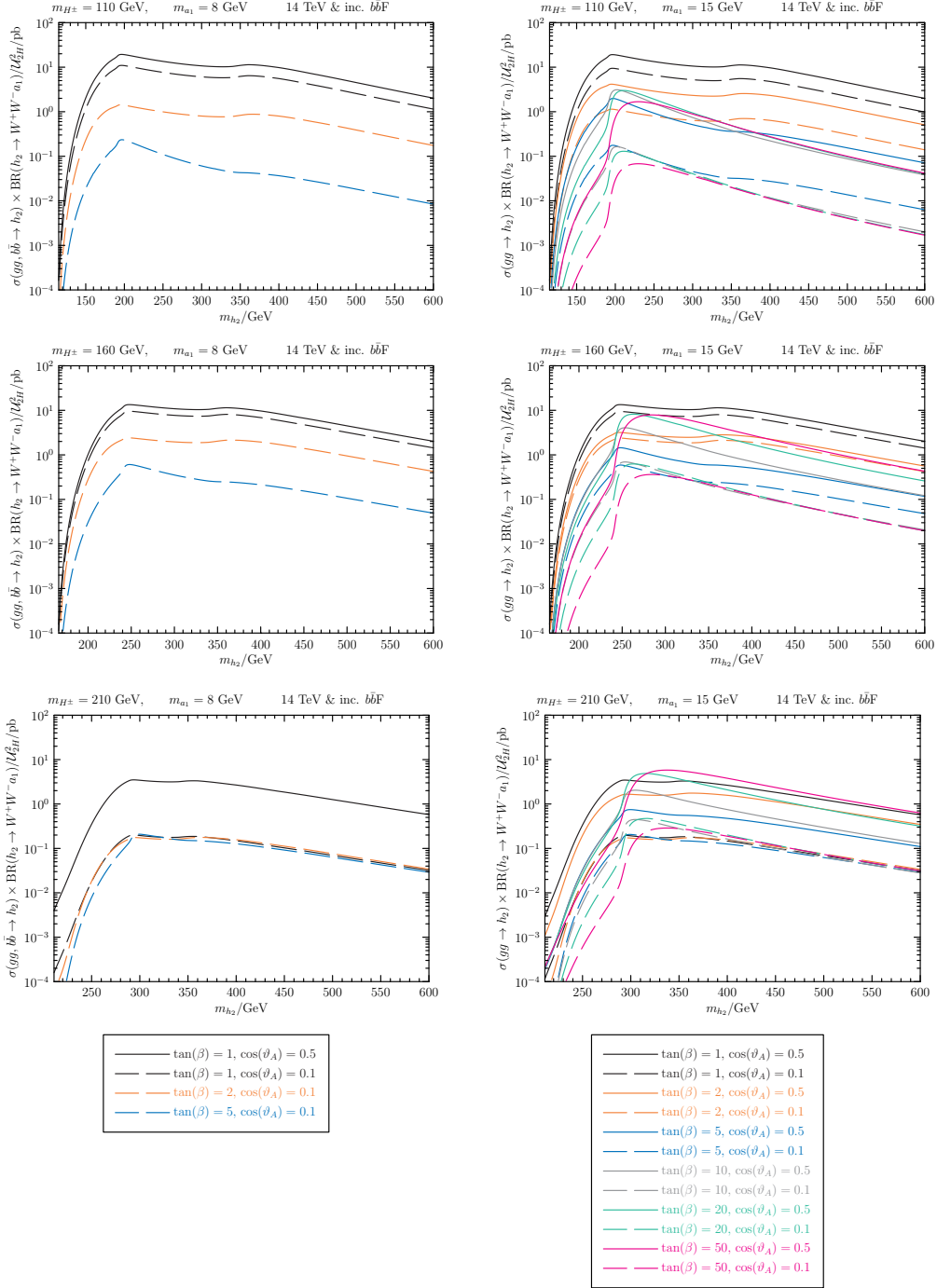


Figure 9. The complete cross-section times branching ratios $\sigma(gg, b\bar{b} \rightarrow h_2 \rightarrow W^+W^-a_1)/\mathcal{U}_{2H}^2$ at 14 TeV. The contribution from $b\bar{b}F$ is added to the contribution from ggF . \mathcal{U}_{2H} is the H amplitude in the CP -even state h_2 . This mixing element suppresses the production of h_2 , but (given the assumptions outlined in subsection 2.3) cancels out of the branching ratios.

the light Higgs A decay products that lead to extra jets or leptons. We, therefore, expect this search to provide strong constraints on the charged Higgs production mechanism we

consider and potentially to offer an avenue to discover a charged Higgs. However, due to the presence of the light Higgs A , the distributions of kinematic variables that we obtain are different from those expected in the SM Higgs search. In order to apply the results in ref. [21] we need to calculate how the efficiency of the various cuts adopted in that analysis are affected by the presence of the light Higgs A .

The constraints that we derive are valid for a light Higgs A whose mass is just above the $b\bar{b}$ threshold and which decays dominantly to a pair of bottom quarks. In the CMS analysis the number of jets (for the purposes of separating the events into channels; 0, 1, or more) is defined as the number of reconstructed jets with $p_T > 30$ GeV (and $|\eta| < 4.7$), reconstructed using the anti- k_T clustering algorithm with distance parameter $\Delta R = 0.5$. For purely kinematic reasons, when the p_T of the A is as large as 30 GeV the angular separation (ΔR) between the two b quarks is going to be small (compared to 0.5) for the A masses that we consider and therefore any A final state with high enough p_T to count as a jet will in fact have its final state b quarks cluster into a single jet most of the time. This has been explicitly checked in ref. [15] (for $A \rightarrow \mu^+\mu^-, \tau^+\tau^-$) and in ref. [41] (for $A \rightarrow b\bar{b}$ —see figure 6 therein). Using MadGraph we checked that for m_A up to around 15 GeV, the ΔR angular opening of the two b quarks is small enough to treat the $b\bar{b}$ system as a single fat jet (obviously for a low enough p_T cut and/or a large enough m_A , the two final state b quarks can look like two distinct jets).

For m_A below the $b\bar{b}$ threshold A will decay mainly to τ lepton pairs or maybe to charm quark pairs. For example, for $A = a_1$, decaying via its A_H admixture, decays to τ pairs will dominate until very low $\tan\beta \approx 1.3$, where decays to charm pairs begin to overtake [27]. For such decays into charm quarks the opening angle cannot exceed 0.5 and the decay products will mostly be clustered into a single jet. For the decays into τ leptons, the decay products will also mostly be clustered into a single jet and give no additional isolated leptons; the exception is when both τ leptons decay leptonically (about 13 % of the time). In this case there will be no jet and quite possibly extra isolated leptons that would lead to the event not passing the selection criteria in the CMS analysis. This small effect should not much affect our results.

The CMS collaboration presented exclusion bounds obtained using two different techniques to isolate the signal from the background. The first is a cut-based analysis in which separate sets of kinematic cuts are applied for each different Higgs mass hypothesis. The second is a shape-based analysis applied to the distribution of events in the two-dimensional $(m_T, m_{\ell\ell})$ plane. In this paper, we apply the cut based analysis of ref. [21] to our signal; at this time, we cannot proceed with the shape-based analysis since the CMS note does not provide enough detail.

All of the CMS data are split into four channels depending on whether the two leptons have different or the same flavor (DF, SF) and whether there is zero or one high p_T (> 30 GeV) jet ($0j, 1j$). In each channel the expected background, expected signal, and observed data are given for several SM Higgs mass hypotheses. For each of these hypotheses a different set of cuts is applied. The cuts used for SM Higgs searches with mass hypotheses 120, 125, 130, 160, 200, and 400 GeV are presented in table 1 of ref. [21]. Extra cuts are also applied for the SF channels in order to suppress background from Drell-Yan processes.

In this paper, we analyze the 19.5 fb^{-1} of data collected at $\sqrt{s} = 8 \text{ TeV}$ and presented in table 4 of ref. [21]. To obtain the observed upper limit from applying the cuts in each channel and corresponding to each SM Higgs mass hypothesis we adopt a modified frequentist construction [42, 43]. (A brief summary of the CL_s method is presented in appendix D.) The 95 % C.L. upper limit (on the number of events) that we obtain from our analysis is indicated with $\ell_{\mathcal{F}\mathcal{J}}^{\mathcal{H}}$, where \mathcal{H} refers to each of the SM Higgs mass hypotheses and $\mathcal{F}\mathcal{J}$ to the channel considered ($\mathcal{F} \in \{\text{DF}, \text{SF}\}$ and $\mathcal{J} \in \{0j, 1j\}$). The value of $\ell_{\mathcal{F}\mathcal{J}}^{\mathcal{H}}$ has to be compared to the expected signal $E_{\mathcal{F}\mathcal{J}}^{\mathcal{H}\mathcal{P}}$, where \mathcal{P} stands for the considered theory and point in parameter space. (For the type-II 2HDM + singlet scenario \mathcal{P} stands for the relevant Higgs boson masses, $\cos \vartheta_A$, and $\tan \beta$.)

In the type-II 2HDM + singlet reference scenario the expected signal in the 0j channel is then

$$E_{\mathcal{F}0}^{\mathcal{H}\mathcal{P}} = \frac{s_{\mathcal{F}0}^{\mathcal{H}}(1 - x_{\mathcal{F}}^{\mathcal{H}\mathcal{P}})}{\mathcal{B}^{\mathcal{H}\sigma\mathcal{H}}} \underbrace{\sin^2 \vartheta_A \sigma^{\mathcal{P}}}_{\sigma(gg \rightarrow a_2)} \mathcal{B}_{a_2}^{\mathcal{P}} \frac{A^{\mathcal{P}} \cos^2 \vartheta_A}{\underbrace{A^{\mathcal{P}} \cos^2 \vartheta_A + B^{\mathcal{P}}}_{\text{Br}(H^\pm \rightarrow a_1 W^\pm)}} a_{\mathcal{F},\text{rel}}^{\mathcal{H}\mathcal{P}}, \quad (3.1)$$

where the exact ϑ_A dependence has been factored out. Here $s_{\mathcal{F}0}^{\mathcal{H}}$ is the number of expected events for each of the six SM Higgs mass hypotheses \mathcal{H} in each channel $\mathcal{F}0$ in table 4 of the CMS note [21]. $\mathcal{B}^{\mathcal{H}\sigma\mathcal{H}}$ is the production cross-section times branching ratio for that SM Higgs. The production cross-section times branching ratio for $gg \rightarrow a_2 \rightarrow H^\pm W^\mp$ is given by $\sin^2 \vartheta_A \sigma^{\mathcal{P}} \mathcal{B}_{a_2}^{\mathcal{P}}$. In the branching ratio for $H^\pm \rightarrow a_1 W^\pm$ we factor out the $\cos^2 \vartheta_A$ dependence and define $A^{\mathcal{P}} = \Gamma(H^\pm \rightarrow A_H^1 W^\pm)$ and $B^{\mathcal{P}} = \Gamma(H^\pm \rightarrow a_1 W^\pm)$, where A_H^i is the pure A_H interaction state with the mass of a_i . $x_{\mathcal{F}}^{\mathcal{H}\mathcal{P}}$ is the fraction of events that have one more jet (in addition to those from initial or final state QCD radiation) passing the jet selection due to the decay of a_1 . Here these events are therefore removed from the 0j channel and appear in the 1j channel. $a_{\mathcal{F},\text{rel}}^{\mathcal{H}\mathcal{P}}$ is the relative acceptance for our signal and, for each Higgs mass hypothesis \mathcal{H} , is defined as the ratio of the fraction of $pp \rightarrow a_2 \rightarrow WWa_1$ events that survive a given cut \mathcal{H} to the fraction of SM Higgs events that survive the same cut. Both of these numbers depend on \mathcal{F} since extra cuts are applied in the SF channels. The exact definition of this relative acceptance is

$$a_{\mathcal{F},\text{rel}}^{\mathcal{H}\mathcal{P}} = \frac{(\# \text{ of events passing the cut} / \text{total } \# \text{ of events before the cut})_{\text{NP}(\mathcal{P})}}{(\# \text{ of events passing the cut} / \text{total } \# \text{ of events before the cut})_{\text{SM}(\mathcal{H})}}. \quad (3.2)$$

For the expected signal in the 1j channels, we obtain

$$E_{\mathcal{F}1}^{\mathcal{H}\mathcal{P}} = \frac{s_{\mathcal{F}0}^{\mathcal{H}} x_{\mathcal{F}}^{\mathcal{H}\mathcal{P}} + s_{\mathcal{F}1}^{\mathcal{H}}(1 - x_{\mathcal{F}}^{\mathcal{H}\mathcal{P}})}{\mathcal{B}^{\mathcal{H}\sigma\mathcal{H}}} \sin^2 \vartheta_A \sigma^{\mathcal{P}} \mathcal{B}_{a_2}^{\mathcal{P}} \frac{A^{\mathcal{P}} \cos^2 \vartheta_A}{A^{\mathcal{P}} \cos^2 \vartheta_A + B^{\mathcal{P}}} a_{\mathcal{F},\text{rel}}^{\mathcal{H}\mathcal{P}}. \quad (3.3)$$

To obtain the values of $a_{\mathcal{F},\text{rel}}^{\mathcal{H}\mathcal{P}}$ and $x_{\mathcal{F}}^{\mathcal{H}\mathcal{P}}$, we used MadGraph 5 [44, 45] where the dominant $gg \rightarrow \Phi$ production is written from FeynRules [46–51], and obtained consistent results with SHERPA 1.4.0 [52–55]. Since the kinematic cuts are independent of the interaction couplings (and thus $\tan \beta$ or $\cos \vartheta_A$), the $a_{\mathcal{F},\text{rel}}^{\mathcal{H}\mathcal{P}}$ and $x_{\mathcal{F}}^{\mathcal{H}\mathcal{P}}$ parameters depend only on the Φ , H^\pm , and A masses. The width of Φ does technically depend on $\tan \beta$, but the $\tan \beta$ -independent contribution from $\Phi \rightarrow H^\pm W^\mp$ is dominant whenever it is important (see

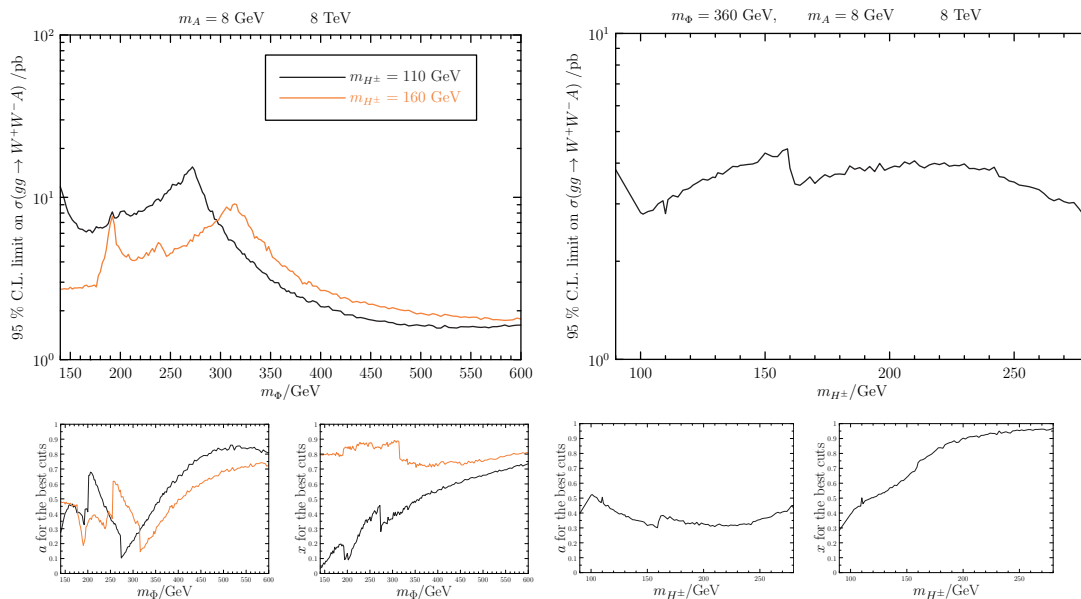


Figure 10. Above: The 95% CL_s limits on the production times branching ratios calculated using $x_{\mathcal{F}}^{\mathcal{H}\mathcal{P}}$ and $a_{\mathcal{F},\text{rel}}^{\mathcal{H}\mathcal{P}}$. Below: $a_{\mathcal{F},\text{rel}}^{\mathcal{H}\mathcal{P}}$ and $x_{\mathcal{F}}^{\mathcal{H}\mathcal{P}}$ for the set of cuts \mathcal{H} and channel \mathcal{F} that sets the best limit. The results turn out to be independent of m_A to very good accuracy for the range that we consider.

appendix C). The effects of the cuts do not depend strongly depend on the width of H^\pm . Our simulated events do not include any jets from initial or final state radiation, which is the main source of $1j$ events in the SM case; using values for $x_{\mathcal{F}}^{\mathcal{H}\mathcal{P}}$ and $a_{\mathcal{F},\text{rel}}^{\mathcal{H}\mathcal{P}}$ extracted from these simulations, especially in the $s_{\mathcal{F}1}^{\mathcal{C}}(1 - x_{\mathcal{F}}^{\mathcal{C}\mathcal{P}})a_{\mathcal{F},\text{rel}}^{\mathcal{C}\mathcal{P}}$ part of the above $1j$ channel equation, is therefore just a reasonable approximation, since the kinematic effects of initial and final state radiation are neglected. The ratio $x_{\mathcal{F}}^{\mathcal{H}\mathcal{P}}$ measures the fraction of events with n jets (due to initial or final state QCD radiation) that end up in the $(n+1)$ -jets bin due to hadronic decay of the pseudoscalar Higgs into high- p_T b-hadrons: in principle we expect the numerical value of this ratio to be different for the cases $n = 0$ and $n = 1$. Taking into account that we did not observe a strong sensitivity of the bounds we extract to the precise value of this ratio and that jet isolation requirements would imply a further reduction of the ratio for $n = 1$ (thus increasing the number of expected signal events and strengthening the exclusion bounds), we believe that eq. (3.3) represents a reasonable and conservative approximation.

For each 95 % CL_s limit $\ell_{\mathcal{F}\mathcal{J}}^{\mathcal{H}}$, derived as shown in appendix D, we obtain the allowed parameter space by imposing

$$E_{\mathcal{F}\mathcal{J}}^{\mathcal{H}\mathcal{P}} < \ell_{\mathcal{F}\mathcal{J}}^{\mathcal{H}}. \tag{3.4}$$

We apply whichever of these conditions leads to the best upper limit on the production cross-section times branching ratios for our signal. These limits on cross-section times branching ratios are model independent in the sense that they apply to any model containing Φ , H^\pm , and A particles and depend only on the masses of these particles. Moreover,

they do not depend on the CP nature of the Φ and A Higgs bosons because the Φ is produced on-shell and the structure of the $\phi \rightarrow \phi'V$ decay (where $\phi^{(l)}$ are spin-0) does not depend on the CP nature of the $\phi^{(l)}$ (see appendix A). These cross-section limits are shown in the upper plots in figure 10 and they are superimposed on our reference scenario in figure 6. When deriving these limits l we assume a fractional systematic error for the expected signal appearing in each channel of 30 %, which we consider to be conservative (see appendix D). We find that the limits hardly vary with m_A at all for the range that we consider. The peaks that appear in the left plot are due to us only having data for discrete values of the SM Higgs mass hypothesis. For instance, the most prominent peak corresponds to the Φ mass at which the 400 GeV cuts take over the 200 GeV cuts in providing the best upper limit. Currently only very low values of $\tan\beta$ ($\lesssim 2$) can be constrained in our reference scenario. The strongest constraint is obtained near the $t\bar{t}$ threshold region, for this reason we choose $m_{a_2} = 360$ GeV as a reference point in the detailed parameter space study presented in the next subsection.

If the analysis were to be performed again using a more appropriate set of cuts for each set of masses the suppression due to the relative acceptance (see eq. (3.2)) could certainly be reduced. In fact, since the SM Higgs to WW signal and our signal are very similar, it is reasonable to presume that optimized cuts would lead to relative acceptances closer to unity. This would remove the peaks and slightly lower the baseline in the plot in figure 10, leading to an order of magnitude improvement on the upper limit in some parts of the parameter space. Existing 8 TeV data could, therefore, be used to probe more moderate values of $\tan\beta$. Estimating the possible sensitivity of a dedicated search at $\sqrt{s} = 14$ TeV is not simple, nonetheless the problem is one of distinguishing a signal over the uncertainty of the background. Assuming that with more data the background determination continues to be statistics limited and assuming that going from 8 to 14 TeV the background cross-section roughly doubles we can very roughly predict that at 14 TeV with 100 fb^{-1} (500 fb^{-1}) of data a dedicated analysis could be sensitive to cross-sections of order 0.6 pb (0.3 pb), to be compared with the kinds of signals predicted in figures 8 and 9. A proper analysis would need to be carried out by the experimental groups after collecting more data.

It is also worth pointing out that our $x_{\mathcal{F}}^{\mathcal{HP}}$ parameter is almost always closer to unity than to zero. In the SM search the limits coming from the $0j$ and $1j$ channels are comparable. In our case, however, the best limit almost always comes from the $1j$ channels, with the $0j$ channels setting much weaker limits. Almost as many events are moved out of the $1j$ channels due to the non-zero $x_{\mathcal{F}}^{\mathcal{HP}}$ than are moved from the $0j$ into the $1j$ channels, so the large $x_{\mathcal{F}}^{\mathcal{HP}}$ does not significantly increase the limits coming from the $1j$ channels; it just weakens the limits coming from the $0j$ channels. However, if one were to look at a $2j$ channel, with the same cuts as in the $0j$ and $1j$ channels, but requiring exactly two high p_T (> 30 GeV) jets, the situation could be different. Such a channel would not be useful for the SM Higgs to WW search (the $2j$ channel discussed in the CMS analysis [21] has completely different cuts and is designed to single out vector boson fusion production) and is therefore not considered in SM searches. However, for our process the probability to have two high p_T jets even in the ggF production, one coming from initial or final state radiation and another coming from the A decay, is significant. Such a $2j$ channel would

also likely have a smaller background and could lead to better limits than the $1j$ channels for which we have data.

If we replace the a_2 with one of the CP -even states, $\Phi = h_2$, in our type-II 2HDM + singlet scenario the analysis is similar. In this case there is, however, another independent parameter, the H fraction in h_2 , \mathcal{U}_{2H}^2 . This affects the production of but not the decays of h_2 under the assumptions outlined in subsection 2.3.

3.2 The type-II 2HDM plus singlet case

As explained in the previous section, SM Higgs WW searches allow one to place model independent constraints on a charged Higgs produced in the decay of a heavy neutral Higgs and decaying to $W^\pm A$, where A is a generic light neutral Higgs. In this section we apply the results presented in section 3.1 to the special case of a type-II 2HDM with an extra SM singlet. In the context of this model the limits worked out in section 3.1 apply at relatively low $\tan\beta$ ($\lesssim 2$).

In figure 11 we show the limits we obtain for $m_{a_2} = 360$ GeV. As explained in the previous section we choose $m_{a_2} = 360$ GeV as a reference point because the constraints we obtain are the strongest around the resonance region $m_{a_2} \sim 2m_t$. The figure shows the excluded regions in the $(m_{H^\pm}, \tan\beta)$ plane for various values of $m_{a_1} \in \{8, 15\}$ GeV and $\cos^2\vartheta_A \in \{0.1, 0.01\}$. The grey region is excluded by direct searches at LEP [57–61]. The blue and green regions are excluded by Tevatron and LHC searches in the $\tau\nu$ [6, 7, 62] and cs [63] final states, respectively. The pink region is excluded by a combination of searches at BaBar [11, 12] ($\Upsilon_{3s} \rightarrow a_1\gamma$ channel) and at the LHC [13, 14] (direct $gg \rightarrow a_1 \rightarrow \mu\mu$ production); this pink exclusion only applies for m_{a_1} just below the $b\bar{b}$ threshold and not for m_{a_1} just above. The red area is excluded by a dedicated $t \rightarrow bH^+ \rightarrow bW^+a_1 \rightarrow bW^+\tau^+\tau^-$ search at CDF [56]. The purple area surrounded by the thick black solid line is the additional region of parameter space excluded by our study in the $gg \rightarrow a_2 \rightarrow W^+W^-a_1$ channel.

At lower values of $\cos^2\vartheta_A$ the exclusion region narrows due to the $\cos^2\vartheta_A$ dependence of $\text{BR}(H^\pm \rightarrow W^\pm a_1)$ (see the discussion in section 2.2). In particular, for $(m_{a_1}, \cos^2\vartheta_A) = (8 \text{ GeV}, 0.1)$, the light charged Higgs parameter region analyzed in ref. [15] is completely excluded (if a heavy Higgs with mass $m_{a_2} = 360$ GeV is present). On one hand, at low values of $\tan\beta \lesssim 0.03$ we lose sensitivity because the a_2 width becomes dominated by $a_2 \rightarrow t\bar{t}$. On the other hand, at large $\tan\beta \geq 10$ either the a_2 production cross-section or $\text{BR}(a_2 \rightarrow W^+W^-a_1)$ are suppressed and our search loses sensitivity.

Our study extends also to charged Higgs masses above the $t\bar{b}$ threshold. Unfortunately, sensitivity in this region is not currently very strong for the following two reasons. First, in this region the $H^\pm \rightarrow W^\pm a_1$ branching ratio is suppressed at low $\tan\beta \lesssim 2$ and very large $\tan\beta \gg 10$ unless the charged Higgs mass is fairly large (see figure 3). Second, as the charged Higgs mass increases, the phase space for the $a_2 \rightarrow H^\pm W^\mp$ decay shrinks; this can be compensated by raising the a_2 mass at the price of a reduced production cross-section. In conclusion, we do not currently find appreciable constraints for $m_{H^\pm} \gtrsim 180$ GeV. This heavy charged Higgs parameter space could be constrained in the future with more data.

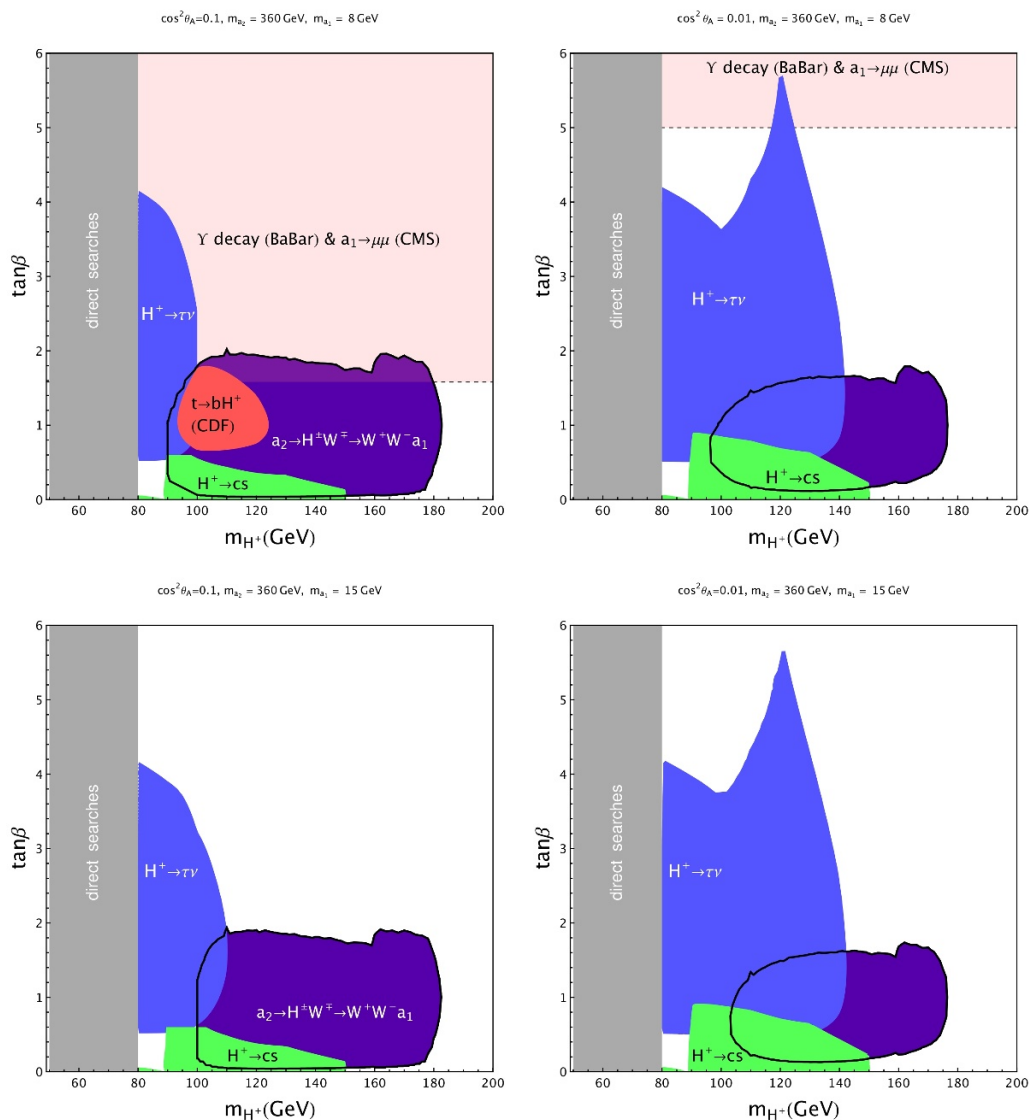


Figure 11. The comparison with the result in [15] in terms of $\tan \beta$ and m_{H^+} when $m_{a_2} = 360$ GeV. The additionally excluded parameter region by our search for $gg \rightarrow a_2 \rightarrow W^+W^-a_1$ is shown as purple area surrounded by the thick black line. We choose the mass $m_{a_2} = 360$ GeV as a reference point since the strongest constraint can be obtained nearby the $t\bar{t}$ threshold as mentioned in section 3.1. The red region is excluded by a direct $t \rightarrow bH^+ \rightarrow bW^+a_1 \rightarrow bW^+\tau^+\tau^-$ search at CDF [56]. The white region is not excluded. Above: the mass of the light neutral Higgs $m_{a_1} = 8$ GeV, which is constrained by the Υ decay at BaBar and $a_1 \rightarrow \mu\mu$ at CMS, represented by the light pink region (above the dashed line). The regions excluded by searching for $\tau\nu$ and cs final states are shown in the blue and green respectively. Below: the mass of the light neutral Higgs $m_{a_1} = 15$ GeV, which is free from the BaBar and CMS bounds.

In figure 12 we show regions that we exclude in the $(m_{a_2}, \cos^2 \vartheta_A)$ plane at fixed values of $m_{H^\pm} \in \{110, 160\}$ GeV, $m_{a_1} \in \{8, 15\}$ GeV, and $\tan \beta$. The region above the dotted line is excluded by direct a_1 searches at BaBar and at the LHC ($\tan \beta \cos \vartheta_A \lesssim 0.5$ [15, 27])

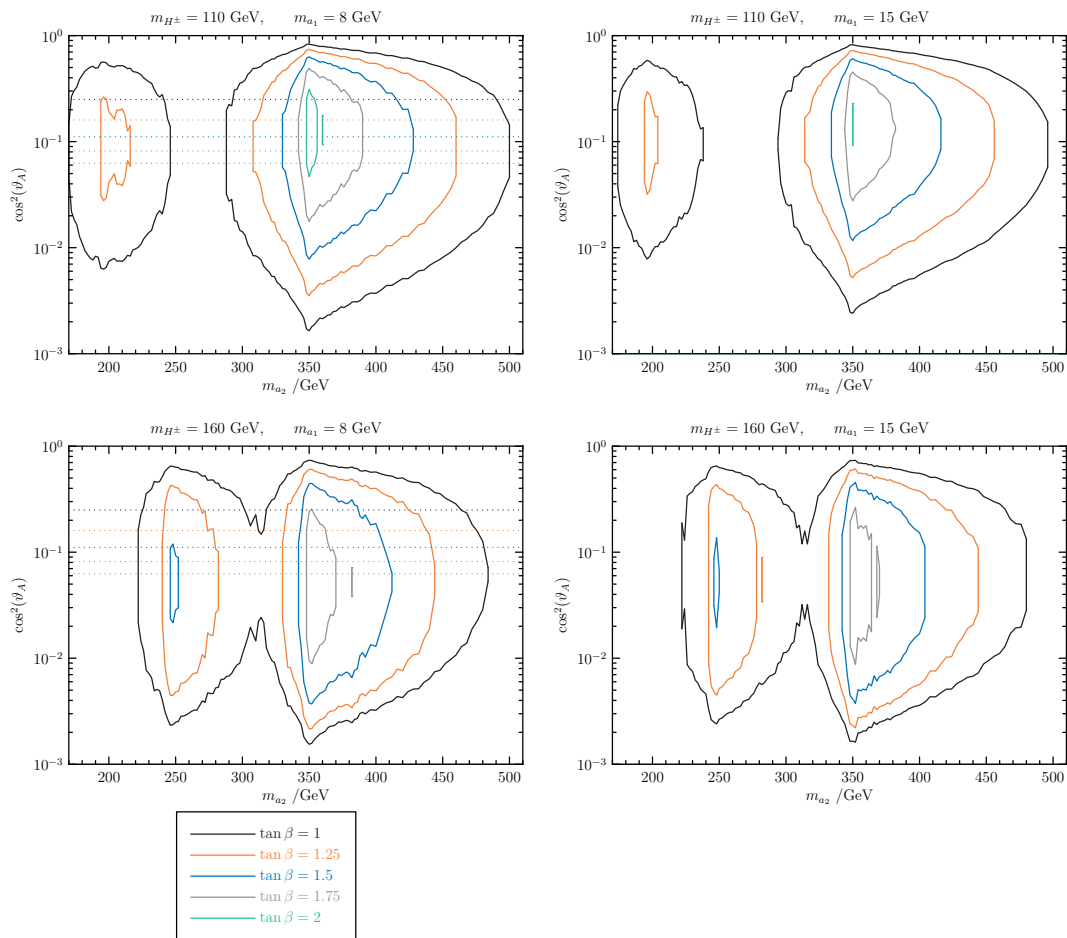


Figure 12. For a_1 below the $b\bar{b}$ threshold, above the dotted lines is ruled out by negative results from searches for $\Upsilon \rightarrow a_1 \gamma \rightarrow (\tau\tau, \mu\mu)\gamma$ [11, 12] and $gg \rightarrow a_1 \rightarrow \mu\mu$ [13, 14], which together roughly constrain $\tan\beta \cos\vartheta_A \lesssim 0.5$ [15, 27]. Inside the contours (below the lines in the bottom two graphs) is ruled out from the CMS 8 TeV SM Higgs to WW search at 95 % C.L. by our analysis.

when m_{a_1} is just below the $b\bar{b}$ threshold. The reason for the weakening of the limits for intermediate a_2 masses in figure 12 is purely due to the fact that we have data for the cuts corresponding to SM Higgs mass hypotheses of 200 GeV and 400 GeV, but nothing in between. This then causes the peaks of weakening limits in figure 10 and the effects can be seen in figure 12. (See also figure 6.)

4 Conclusions

The experimental discovery at the LHC of a particle compatible with the SM Higgs boson is the first step towards a full understanding of the electroweak symmetry breaking mechanism. Assuming that the particle discovered at the LHC is a fundamental scalar, it becomes imperative to figure out what exactly the Higgs sector is. Many beyond-the-SM scenarios contain a second Higgs doublet and predict the existence of at least one charged Higgs and several neutral CP -even and -odd Higgs bosons. Most experimental searches have been conducted under the rather traditional assumption that the charged Higgs dom-

inantly decays into $\tau\nu$ or $c\bar{s}$ pairs at low-mass ($m_{H^\pm} \lesssim m_t$) and into $t\bar{b}$ otherwise. The existence of a light neutral Higgs A opens the decay channel $H^+ \rightarrow W^+A$ and offers new discovery venues.

In this paper, we study a charged Higgs whose production mechanism relies on a heavy neutral Higgs (Φ) and whose dominant decay is into a light neutral Higgs (A)

$$pp \rightarrow \Phi \rightarrow W^\mp H^\pm \rightarrow W^+W^- A. \tag{4.1}$$

For $m_A \gtrsim 2m_b$, this particle decays dominantly to pairs of b quarks that are detected, at sufficiently high p_T , as a single jet. Under these conditions, the final state is simply W^+W^- plus jets and is, therefore, constrained by SM Higgs searches in the WW channel (this is also mostly true for m_A below the $b\bar{b}$ threshold). For $m_A \lesssim 2m_b$, the A dominantly decays into τ pairs, whose decay products will also mostly be clustered into a singlet jet unless both τ 's decay leptonically. (The latter case provides no extra jets and extra isolated leptons that would lead to the event not passing the selection criteria in the CMS analysis. This may however be another useful signal to search for.) Using existing data on searches for a SM Higgs in the range 128–600 GeV we are able to place constraints on this new physics process. In particular, we find that the upper limit on the production cross-section times branching ratios for the process in (4.1) are in the $\mathcal{O}(1\text{--}10)$ pb range for a wide range of Φ , H^\pm and A masses. The results (presented at the top of figure 10) depend very loosely on the details of a given model and will be useful to constrain a vast array of theories that contain three such particles. In particular the limits depend only on the masses of the three particles and not on the CP nature of Φ and A . For the sake of definiteness we specialize our results to an explicit type-II 2HDM plus singlet reference scenario and show that our results are able, at low $\tan\beta$, to exclude previously open regions of parameter space.

The constraints we derive are shown in figures 11 and 12. They are limited both because we only have partial access to the relevant data and because the cuts used for the SM Higgs search are not quite optimized for the process we consider. We point out that a slight modification of the search strategy, using more appropriate cuts that depend on the hypothesized masses of Φ and H^\pm , would lead to better limits and would be sensitive to more moderate values of $\tan\beta$. Our analysis extends, in principle, to arbitrarily large charged Higgs masses. In practice, the parametric dependence of the production cross-section and branching ratios on the charged Higgs mass limits our present sensitivity to $m_{H^\pm} \lesssim 180$ GeV. However, the parameter space with a heavier charged Higgs could be constrained in the future at the 14 TeV LHC. We point out that once the contribution to production from $b\bar{b}$ fusion is taken into account alongside gg fusion, sensitivity to all values of $\tan\beta$ in our reference scenario should be achieved at the 14 TeV LHC. With 100 fb^{-1} of data we very roughly estimate that sensitivity to cross-sections of order 0.6 pb would be achieved, to be compared to the kinds of cross-sections predicted in figures 8 and 9. A search for the process where the charged Higgs is produced in the same way but goes to $t\bar{b}$ is also being considered [64].

Finally, let us comment on the possibility that our process might contribute sizably to the total $pp \rightarrow W^+W^-$ cross-section. A recent CMS measurement with 3.54 fb^{-1} of integrated luminosity at 8 TeV, found a slight excess in this channel: $69.9 \pm 2.8 \pm 5.6 \pm$

3.1 pb against a SM expectation of $57.3_{-1.6}^{+2.4}$ pb without the inclusion of the SM Higgs contribution [65]. Even after accounting for this an additional contribution of several pb seems to be required (see for instance ref. [66] for a possible explanation of this tension in a supersymmetric framework). If this discrepancy survives, the process discussed in this paper could potentially offer a contribution of the correct order of magnitude.

Acknowledgments

R.D. is supported in part by the Department of Energy under grant number DE-FG02-91ER40661. S.S. is supported by the TJ Park POSCO Postdoc fellowship and NRF of Korea No. 2011-0012630. E.L. would like to thank Frank Siegert for substantial help with the Sherpa Monte Carlo.

A Decay rates³

Let

$$\lambda_{12} = (1 - k_1 - k_2)^2 - 4k_1k_2, \tag{A.1}$$

where $k_i = m_i^2/M^2$ and M is the mass of the decaying particle, and let

$$\beta_1 = \sqrt{\lambda_{11}} = \sqrt{1 - 4k_1}. \tag{A.2}$$

Let us further define $x_i = 2E_i/M$ and $\gamma_i = \Gamma_i^2/M^2$.

A.1 $\Phi \rightarrow \phi W$

Allowing the W to be off-shell and assuming it can decay to all light fermions (excluding tops), which we take to be massless, we can write

$$\Gamma(\Phi \rightarrow \phi W^*) = \frac{3G_F}{4\pi\sqrt{2}} M \frac{M_W \Gamma_W}{\pi} \int_0^{1-k_\phi} dx_2 \int_{1-x_2-k_\phi}^{1-k_\phi/(1-x_2)} dx_1 \frac{(1-x_1)(1-x_2) - k_\phi}{(1-x_1-x_2-k_\phi+k_W)^2 + k_W\gamma_W}. \tag{A.3}$$

Here 1 and 2 label the fermions from the W decay.⁴ This formula is valid for $A_H \rightarrow H^\pm W^\mp$, $H \rightarrow H^\pm W^\mp$, and $H^\pm \rightarrow A_H W^\pm$. For $a_2 \rightarrow H^\pm W^\mp$ and $H^\pm \rightarrow a_1 W^\pm$, with the conventions defined in section 2.1, there is a suppression by $\sin^2(\vartheta_A)$ and $\cos^2(\vartheta_A)$ respectively. Writing the integral in this way, the inner x_1 integration can be performed analytically and the remaining integrand behaves well for numerical integration and the

³A more complete list of two- and three-body tree-level decays relevant in Higgs sector extensions containing doublets and singlets, along with accompanying C++ code, will be presented in ref. [68].

⁴This is for one particular charge of W . The equivalent formula for a Z boson is obtained by replacing $W \rightarrow Z$ everywhere. The formulae in ref. [32] (2.20) and ref. [67] (41,58,59) are a factor of 2 too large for the W boson case, whereas the formula for the Z boson case are correct. This is because δZ (as defined in ref. [32]), rather than being the ratio of the Z and W widths times $\cos^3 \vartheta_W$, contains an extra factor of $1/2$. This is the symmetry factor relevant for the VV decays, but not the ϕV decays. There is also a typo in the $\sin^4 \vartheta_W$ term in δZ in ref. [32].

outer integration over x_2 can be evaluated numerically very quickly. For completeness, above threshold in the zero-width on-shell approximation we can write⁵

$$\Gamma(\Phi \rightarrow \phi W) = \frac{G_F}{8\pi\sqrt{2}} M^3 \lambda_{\phi W}^{3/2}. \quad (\text{A.4})$$

In this massless fermion approximation we can write

$$\Gamma_W = \frac{9G_F M_W^3}{6\pi\sqrt{2}}. \quad (\text{A.5})$$

A.2 Other A_H decays

For light quarks q

$$\Gamma(A_H \rightarrow q\bar{q}) = \frac{3G_F}{4\pi\sqrt{2}} (g_q^{A_H})^2 M m_q^2 (1 + \Delta_{qq}), \quad (\text{A.6})$$

where

$$\Delta_{qq} = 5.67 \frac{\alpha_{\text{QCD}}(M)}{\pi} + (35.94 - 1.36 n_f) \frac{\alpha_{\text{QCD}}(M)^2}{\pi^2}, \quad (\text{A.7})$$

m_q is the running mass at the scale $M = m_{A_H}$, and n_f is the QCD number of flavours at M . Further QCD corrections for the scalar and pseudoscalar decays to quarks are derived in refs. [69] and [70] and summarised in ref. [32], but these are only valid in the heavy top mass limit, i.e. when the boson is light compared to the top quark.

For charged leptons l

$$\begin{aligned} \Gamma(A_H \rightarrow l^+ l^-) &= \frac{G_F}{4\pi\sqrt{2}} \tan^2(\beta) M m_l^2 \beta_l. \quad (\text{A.8}) \\ \Gamma(A_H \rightarrow t\bar{t}^* \rightarrow t\bar{b}W^-) &= \frac{3G_F^2}{64\pi^3} \frac{M^3 m_t^2}{\tan^2(\beta)} \int dx_{\bar{b}} \int dx_t \frac{1}{(1-x_t)^2 + k_t \gamma_t} \\ &\quad \left[- (1-x_t)^2 (1-x_t-x_{\bar{b}}-k_W+k_t) \right. \\ &\quad \quad + 2k_W ((1-x_t)(1-x_{\bar{b}}) - k_W) \\ &\quad \quad \left. - k_t ((1-x_t)(1-x_{\bar{b}}) - 2(1-x_t) - k_W - k_t) \right]. \quad (\text{A.9}) \end{aligned}$$

Here m_b has been neglected in the integrand. The leading QCD correction can be included by using the running mass for the m_t^2 factor that appears out front, which comes directly from the Yukawa coupling in the Feynman rule. In the integrand and in the integration limits the running mass is not used (for k_t and k_b) so that the threshold appears in the correct place.⁶ For three-body decays written in terms of the x s (energies) of two (1 and 2)

⁵This is also for one particular charge of W and the equivalent formula for a Z boson is again obtained by replacing $W \rightarrow Z$. This on-shell formula in ref. [32] (2.18) contains a typo that makes it dimensionally inconsistent. The formulae in ref. [67] (38,39,51,57) are correct, except that (57) contains an erroneous factor of $\cos^2 \vartheta_W$.

⁶This formula is correct in ref. [67] (55,56), but the expression in ref. [32] (2.8) is a factor of 2 larger. The formula (2.8) as written is correct below threshold after one takes into account that either top can go off-shell, but is then a factor of 2 too large above threshold. Our approach is given in the text.

of the three final states particles (1, 2, and 3) the kinematic limits are, without neglecting any masses,

$$2\sqrt{k_2} \leq x_2 \leq 1 - k_3 + k_2 - k_1 - 2\sqrt{k_1 k_3}, \quad (\text{A.10})$$

$$x_1 \gtrless \frac{(1 - x_2 + k_1 + k_2 - k_3) \left(1 - \frac{x_2}{2}\right) \mp \sqrt{\frac{x_2^2}{4} - k_2} \sqrt{(1 - x_2 + k_1 + k_2 - k_3)^2 - 4k_1 \left(1 - \frac{x_2}{2}\right)^2 + 4k_1 \left(\frac{x_2^2}{4} - k_2\right)}}{1 - x_2 - k_2}.$$

$$\Gamma(t \rightarrow bW^+) \approx \frac{G_F}{8\pi\sqrt{2}} m_t^3 (1 - k_W)(1 + 2k_W) \lambda_{bW}^{1/2}. \quad (\text{A.11})$$

A formula for $\Gamma(A_H \rightarrow t^* \bar{t}^* \rightarrow bW^+ \bar{b}W^-)$ that is valid both above and below threshold can be obtained by doubling $\Gamma(A_H \rightarrow t \bar{t}^* \rightarrow t \bar{b}W^-)$ and using $4\gamma_t$ in place of γ_t . Above threshold in the zero-width on-shell approximation we can write

$$\Gamma(A_H \rightarrow t \bar{t}) = \frac{3G_F}{4\pi\sqrt{2}} \frac{M m_t^2}{\tan^2(\beta)} \beta_t. \quad (\text{A.12})$$

A.3 Other H decays

$$\Gamma(H \rightarrow q \bar{q}) = \frac{3G_F}{4\pi\sqrt{2}} (g_q^{A_H})^2 M m_q^2 (1 + \Delta_{qq}), \quad (\text{A.13})$$

where

$$\Delta_H^2 = \frac{\alpha_{\text{QCD}}(M)^2}{\pi^2} \left(1.57 - \frac{2}{3} \ln \left(\frac{M^2}{m_t^2} \right) + 1/9 \ln \left(\frac{m_q^2}{M^2} \right)^2 \right), \quad (\text{A.14})$$

$$\Gamma(H \rightarrow l^+ l^-) = \frac{G_F}{4\pi\sqrt{2}} \tan^2(\beta) M m_l^2 \beta_l^3, \quad (\text{A.15})$$

$$\begin{aligned} \Gamma(H \rightarrow t \bar{t}^* \rightarrow t \bar{b}W^-) &= \frac{3G_F^2}{64\pi^3} \frac{M^3 m_t^2}{\tan^2(\beta)} \int dx_{\bar{b}} \int dx_t \frac{1}{(1 - x_t)^2 + k_t \gamma_t} \\ &\left[- (1 - x_t)^2 (1 - x_t - x_{\bar{b}} - k_W + 5k_t) \right. \\ &\quad + 2k_W ((1 - x_t)(1 - x_{\bar{b}}) - k_W - 2k_t(1 - x_t) + 4k_t k_W) \\ &\quad \left. - k_t (1 - x_t)(1 - x_{\bar{b}}) + k_t (1 - 4k_t)(2(1 - x_t) + k_W + k_t) \right]. \quad (\text{A.16}) \end{aligned} \quad ^7$$

Again, a formula for $\Gamma(H \rightarrow t^* \bar{t}^*)$ that is valid both above and below threshold can be obtained by doubling $\Gamma(H \rightarrow t \bar{t}^* \rightarrow t \bar{b}W^-)$ and using $4\gamma_t$ in place of γ_t . Above threshold in the zero-width on-shell approximation we can write

$$\Gamma(H \rightarrow t \bar{t}) = \frac{3G_F}{4\pi\sqrt{2}} \frac{M m_t^2}{\tan^2(\beta)} \beta_t^3. \quad (\text{A.17})$$

⁷Again this formula is correct in ref. [67] (48,49). The situation for ref. [32] (2.8) is the same as discussed in the previous footnote.

A.4 Other H^\pm decays

For light up- and down-type quarks u and d , assuming $k_u, k_d \ll 1$,

$$\Gamma(H^+ \rightarrow u\bar{d}) = \frac{3G_F}{4\pi\sqrt{2}} M(m_u^2 \cot^2(\beta) + m_d^2 \tan^2(\beta))(1 + \Delta_{qq}), \quad (\text{A.18})$$

where m_u and m_d are running masses. For charged leptons l

$$\Gamma(H^+ \rightarrow l^+\nu_l) = \frac{G_F}{4\pi\sqrt{2}} \tan^2(\beta) M m_l^2 (1 - k_l)^2. \quad (\text{A.19})$$

One of the $(1 - k_l)$ factors comes from the matrix-element-squared and the other is the phase-space factor $\sqrt{\lambda_{l\nu}}$.

$$\begin{aligned} & \Gamma(H^+ \rightarrow t^*\bar{b} \rightarrow b\bar{b}W^+) \\ &= \frac{3G_F^2}{32\pi^3} M^3 \int dx_b \int dx_{\bar{b}} \\ & \left[m_t^2 \cot^2(\beta) \frac{-k_W^2(1+x_{\bar{b}}) - (1-x_{\bar{b}})^2(1-x_{\bar{b}}-x_b) + k_W(1-x_{\bar{b}})(3-x_{\bar{b}}-2x_b)}{(1-x_{\bar{b}}-k_t)^2 + k_t\gamma_t} \right. \\ & \quad + m_b^2 k_t \tan^2(\beta) \frac{(1-x_{\bar{b}}-k_W)(1-x_b-k_W) - k_W(1-x_{\bar{b}}-x_b-k_W)}{(1-x_{\bar{b}}-k_t)^2 + k_t\gamma_t} \\ & \quad \left. - 2m_b m_t \sqrt{k_b k_t} \frac{(1-x_{\bar{b}}-k_W)(1-x_{\bar{b}}+2k_W)}{(1-x_{\bar{b}}-k_t)^2 + k_t\gamma_t} \right]. \quad (\text{A.20}) \end{aligned}$$

The leading QCD correction can be included by using the running masses for the m_t^2 , m_b^2 , and $m_b m_t$ factors that appears out front for each of the three terms, which come directly from the Yukawa couplings in the Feynman rule. Elsewhere in the integrand m_b has been neglected.⁸ Elsewhere in the integrand and in the integration limits the running masses are not used (for k_t and k_b) so that the threshold appears in the correct place. Above threshold in the zero-width on-shell approximation

$$\begin{aligned} \Gamma(H^+ \rightarrow t\bar{b}) &= \frac{3G_F}{4\pi\sqrt{2}} M \sqrt{\lambda_{t\bar{b}}} \\ & \left[(1 - k_t - k_b)(m_b^2 \tan^2(\beta) + m_t^2 \cot^2(\beta)) - 4m_b m_t \sqrt{k_t k_b} \right]. \quad (\text{A.21}) \end{aligned}$$

A.5 Off-shell H^\pm

In the off-shell decay $\Phi \rightarrow W^{\mp*} H^{\pm*} \rightarrow W^{\mp*} W^\pm A$, the decay widths Γ_W and Γ_{H^\pm} roughly decide which one is preferred to be off-shell. The full decay width of H^\pm in our type-II 2HDM + singlet reference scenario is shown in comparison with Γ_W in figure 13. For an H^\pm with a mass much above the $t\bar{b}$ threshold the possible three-body decay of Φ through an off-shell H^\pm needs to be considered.

$$\Gamma(\Phi \rightarrow W^+ H^{-*} \rightarrow W^+ \bar{t}b)$$

⁸The m_t^2 term given in ref. [67] (63) seems to be incorrect, producing a different shape to our formula below threshold and not agreeing with the on-shell formula above threshold. All our formulae are checked to make sure that they reproduce the on-shell zero-width approximation formulae sufficiently above threshold, up to finite width effects.

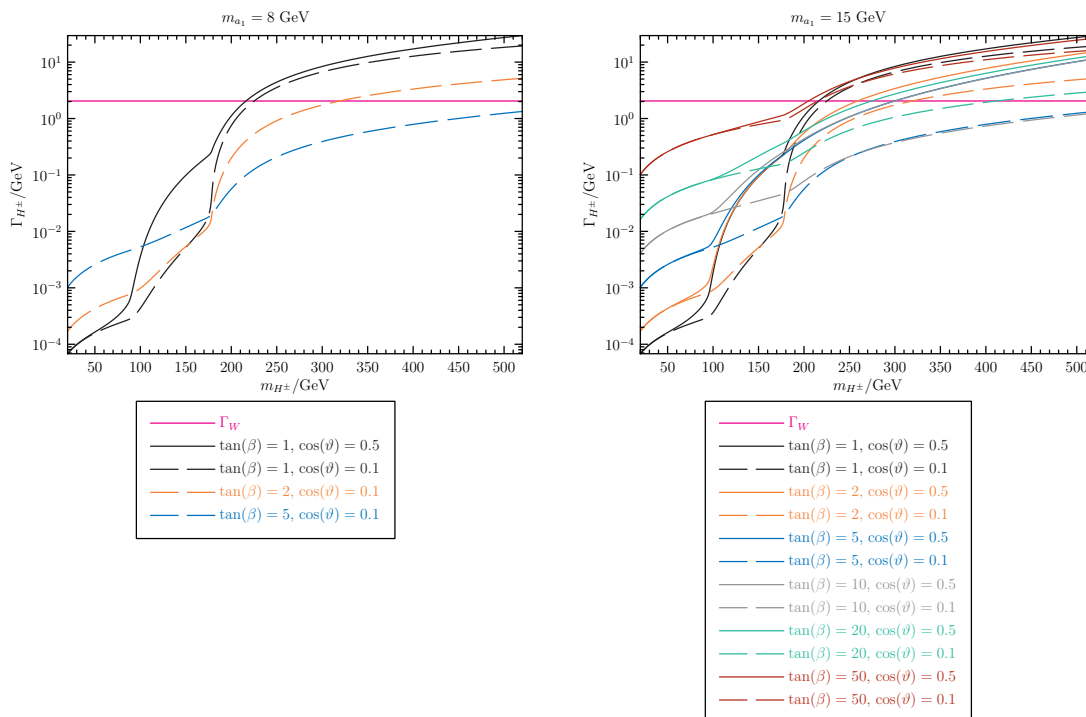


Figure 13. The full width of H^\pm . When the heavy neutral Higgs Φ decays into $H^\pm W^\mp$ off-shell this determines which one preferably goes off-shell.

$$\begin{aligned}
 &= \frac{3G_F^2}{64\pi^3} M^3 \int dx_t \int dx_b \\
 &\quad \left[(m_t^2 \cot^2(\beta) + m_b^2 \tan^2(\beta)) \frac{(-1 + x_t + x_b + k_W - k_t - k_b) ((2 - x_t - x_b + 2k_W)^2 + 4k_W(1 - x_t - x_b - k_W))}{(1 - x_t - x_b - k_W + k_H)^2 + k_H \gamma_H} \right. \\
 &\quad \left. - 4m_b m_t \sqrt{k_b k_t} \frac{(2 - x_t - x_b + 2k_W)^2 + 4k_W(1 - x_t - x_b - k_W)}{(1 - x_t - x_b - k_W + k_H)^2 + k_H \gamma_H} \right]. \tag{A.22}
 \end{aligned}$$

$$\Gamma(\Phi \rightarrow W^+ H^{-*} \rightarrow W^+ W^- \phi) \tag{A.23}$$

$$\begin{aligned}
 &= \frac{G_F^2}{128\pi^3} M^5 \int dx_2 \int dx_1 \\
 &\quad \frac{[(x_1 - 2k_W)^2 - 4k_W(1 - x_1 + k_W)] [(1 - x_1 - k_\phi)^2 - 4k_W k_\phi]}{(1 - x_1 + k_W - k_H)^2 + k_H \gamma_H}.
 \end{aligned}$$

Here 1 and 2 label the two W s. These formulae are valid for $\Phi, \phi \in \{A_H, H\}$ and are suppressed by mixing angles for other mass eigenstates that are not completely doublet.

B Branching ratios

Only two and three-body decay rates are calculated to allow for fast numerical integration. Neglecting the H^\pm width the branching ratio for $\Phi \rightarrow W^\pm W^\mp A$ can be expressed as the product of the two branching ratios

$$\text{BR}(\Phi \rightarrow W^\pm W^\mp A) = 2\text{BR}(\Phi \rightarrow W^+ H^-) \text{BR}(H^- \rightarrow W^- A). \tag{B.1}$$

These individual branching ratios can be calculated using off-shell W s and tops.

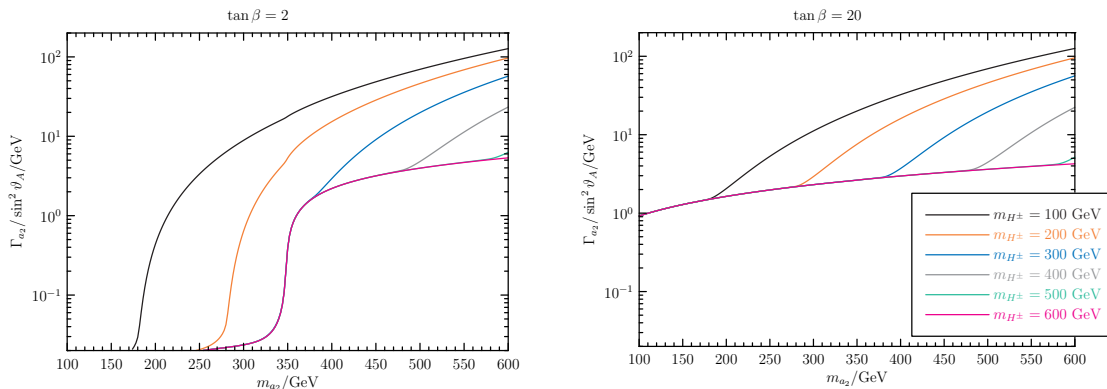


Figure 14. The full width of a_2 divided by $\sin^2 \vartheta_A$, its doublet amplitude squared. Below the $H^\pm W^\mp$ threshold (coinciding lines) the dominant contribution comes from $t\bar{t}$ on left (proportional to $\cot^2 \beta$) and $b\bar{b}$ on the right (proportional to $\tan^2 \beta$).

Alternatively, allowing the H^\pm to go off-shell, we can write

$$\text{BR}(\Phi \rightarrow W^\pm W^\mp A) = \frac{2\Gamma(\Phi \rightarrow W^+ H^{-*} \rightarrow W^+ W^- A)_y + 2\Gamma(\Phi \rightarrow W^{+*} H^-)_y \text{BR}(H^- \rightarrow W^- A)}{2\Gamma(\Phi \rightarrow W^+ H^{-*} \rightarrow W^+ X)_y + 2\Gamma(\Phi \rightarrow W^{+*} H^-)_y + \Gamma(\Phi \rightarrow W^{\pm*} H^\mp)_y}, \tag{B.2}$$

where X means $W^- A$ or fermions and the subscript y indicates that the width

$$y = \Gamma_{H^\pm} + \Gamma_W \tag{B.3}$$

should be used in place of the actual off-shell particle width in the integrand denominator ($\gamma \rightarrow y^2/M^2$). Here tops and W s coming from the H^\pm are on-shell. This formula is really only needed for H^\pm masses above the tb threshold anyway, as can be seen by looking at figure 13. This formula provides a very good approximation to real answer calculated using four-body decay widths (allowing both the H^\pm and W^\mp to be off shell)—much better than just allowing the particle with the largest width to be off-shell—but is built out of three-body decay widths and can therefore be quickly evaluated using single numerical integration.

C The Φ width

Figure 14 shows the width of a_2 (divided by its doublet fraction) in the type-II 2HDM + singlet scenario. The contribution to the total cross-section from a_2 going off-shell (rather than H^\pm or W^\pm) can be important at high $\tan \beta$ or at very low $\tan \beta$ if $m_{H^\pm} + M_W > 2m_t$. For large a_2 masses the width of a_2 can become very large.

D CL_s limits

A $1 - \alpha$ confidence level CL_s limit on a signal s is defined by

$$\alpha = \frac{P(D \geq \lambda|H_0)}{P(D \geq \lambda|H_1)} \tag{D.1}$$

where D is the data and λ is the expected distribution in the signal-plus-background hypothesis (H_0) and in the background only hypothesis (H_1).

For each channel and set of cuts we have a background $B = b \pm \sigma_b$. The signal-plus-background may be expressed as

$$B + S = b + s \pm \sqrt{\sigma_b^2 + s + s^2 \Sigma^2}, \tag{D.2}$$

where s is the expected signal, its statistical error is taken to be \sqrt{s} , its fractional systematic error is taken to be Σ . In this paper, we set $\Sigma = 30\%$ as a conservative bound.

We approximate everything as Gaussian. We therefore take

$$P(D \geq \lambda | H_1) = \Phi \left(\frac{D - b}{\sigma_b} \right), \tag{D.3}$$

$$P(D \geq \lambda | H_0) = \Phi \left(\frac{D - b - s}{\sqrt{\sigma_b^2 + s + s^2 \Sigma^2}} \right), \tag{D.4}$$

Where Φ is the cumulative distribution function. For a given b , σ_b , D , Σ , and α the $1 - \alpha$ confidence level limit on s can therefore be found. We call this solution $s = l$. For our calculation, the parameters are obtained from ref. [21].

Open Access. This article is distributed under the terms of the Creative Commons Attribution License ([CC-BY 4.0](https://creativecommons.org/licenses/by/4.0/)), which permits any use, distribution and reproduction in any medium, provided the original author(s) and source are credited.

References

- [1] ATLAS collaboration, *Observation of a new particle in the search for the standard model Higgs boson with the ATLAS detector at the LHC*, *Phys. Lett. B* **716** (2012) 1 [[arXiv:1207.7214](https://arxiv.org/abs/1207.7214)] [[INSPIRE](#)].
- [2] CMS collaboration, *Observation of a new boson at a mass of 125 GeV with the CMS experiment at the LHC*, *Phys. Lett. B* **716** (2012) 30 [[arXiv:1207.7235](https://arxiv.org/abs/1207.7235)] [[INSPIRE](#)].
- [3] S. Dittmaier, M. Krämer, M. Spira and M. Walser, *Charged-Higgs-boson production at the LHC: NLO supersymmetric QCD corrections*, *Phys. Rev. D* **83** (2011) 055005 [[arXiv:0906.2648](https://arxiv.org/abs/0906.2648)] [[INSPIRE](#)].
- [4] K.A. Assamagan and N. Gollub, *The ATLAS discovery potential for a heavy charged Higgs boson in $gg \rightarrow tbH^\pm$ with $H^\pm \rightarrow tb$* , *Eur. Phys. J. C* **39S2** (2005) 25 [[hep-ph/0406013](https://arxiv.org/abs/hep-ph/0406013)] [[INSPIRE](#)].
- [5] S. Lowette, J. D'Hondt and P. Vanlaer, *Charged MSSM Higgs boson observability in the $H^{+-} \rightarrow tb$ decay*, *CERN-CMS-NOTE-2006-109* (2006).
- [6] ATLAS collaboration, *Search for charged Higgs bosons decaying via $H^\pm \rightarrow \tau\nu$ in top quark pair events using pp collision data at $\sqrt{s} = 7$ TeV with the ATLAS detector*, *JHEP* **06** (2012) 039 [[arXiv:1204.2760](https://arxiv.org/abs/1204.2760)] [[INSPIRE](#)].
- [7] CMS collaboration, *Search for a light charged Higgs boson in top quark decays in pp collisions at $\sqrt{s} = 7$ TeV*, *JHEP* **07** (2012) 143 [[arXiv:1205.5736](https://arxiv.org/abs/1205.5736)] [[INSPIRE](#)].

- [8] ATLAS collaboration, *Search for a light charged Higgs boson in the decay channel $H^+ \rightarrow c\bar{s}$ in $t\bar{t}$ events using pp collisions at $\sqrt{s} = 7$ TeV with the ATLAS detector*, *Eur. Phys. J. C* **73** (2013) 2465 [[arXiv:1302.3694](#)] [[INSPIRE](#)].
- [9] CMS, ATLAS collaboration, M. Flechl, *BSM Higgs results from ATLAS and CMS*, *EPJ Web Conf.* **60** (2013) 02005 [[arXiv:1307.4589](#)] [[INSPIRE](#)].
- [10] ATLAS collaboration, *Search for charged Higgs bosons in the τ +jets final state with pp collision data recorded at $\sqrt{s} = 8$ TeV with the ATLAS experiment*, *ATLAS-CONF-2013-090* (2013).
- [11] BABAR collaboration, B. Aubert et al., *Search for dimuon decays of a light scalar boson in radiative transitions $\Upsilon \rightarrow \gamma A_0$* , *Phys. Rev. Lett.* **103** (2009) 081803 [[arXiv:0905.4539](#)] [[INSPIRE](#)].
- [12] BABAR collaboration, B. Aubert et al., *Search for a low-mass Higgs boson in $Y(3S) \rightarrow \gamma A_0$, $A_0 \rightarrow \tau^+\tau^-$ at BABAR*, *Phys. Rev. Lett.* **103** (2009) 181801 [[arXiv:0906.2219](#)] [[INSPIRE](#)].
- [13] ATLAS collaboration, *A search for light CP-odd Higgs bosons decaying to $\mu^+\mu^-$ in ATLAS*, *ATLAS-CONF-2011-020* (2011).
- [14] CMS collaboration, *Search for a light pseudoscalar Higgs boson in the dimuon decay channel in pp collisions at $\sqrt{s} = 7$ TeV*, *Phys. Rev. Lett.* **109** (2012) 121801 [[arXiv:1206.6326](#)] [[INSPIRE](#)].
- [15] R. Dermisek, E. Lunghi and A. Raval, *Trilepton signatures of light charged and CP-odd Higgs bosons in top quark decays*, *JHEP* **04** (2013) 063 [[arXiv:1212.5021](#)] [[INSPIRE](#)].
- [16] ATLAS collaboration, *Search for a multi-Higgs boson cascade in $W^+W^-b\bar{b}$ events with the ATLAS detector in pp collisions at $\sqrt{s} = 8$ TeV*, *Phys. Rev. D* **89** (2014) 032002 [[arXiv:1312.1956](#)] [[INSPIRE](#)].
- [17] J.A. Evans et al., *Searching for resonances inside top-like events*, *Phys. Rev. D* **85** (2012) 055009 [[arXiv:1201.3691](#)] [[INSPIRE](#)].
- [18] S. Moretti, *The $W^\pm h$ decay channel as a probe of charged Higgs boson production at the large hadron collider*, *Phys. Lett. B* **481** (2000) 49 [[hep-ph/0003178](#)] [[INSPIRE](#)].
- [19] S. Kanemura, S. Moretti, Y. Mukai, R. Santos and K. Yagyu, *Distinctive Higgs signals of a type II 2HDM at the LHC*, *Phys. Rev. D* **79** (2009) 055017 [[arXiv:0901.0204](#)] [[INSPIRE](#)].
- [20] L. Basso et al., *Probing the charged Higgs boson at the LHC in the CP-violating type-II 2HDM*, *JHEP* **11** (2012) 011 [[arXiv:1205.6569](#)] [[INSPIRE](#)].
- [21] CMS collaboration, *Evidence for a particle decaying to W^+W^- in the fully leptonic final state in a standard model Higgs boson search in pp collisions at the LHC*, *CMS-PAS-HIG-13-003* (2013).
- [22] ATLAS collaboration, *Measurements of the properties of the Higgs-like boson in the $WW^{(*)} \rightarrow l\nu l\nu$ decay channel with the ATLAS detector using 25 fb^{-1} of proton-proton collision data*, *ATLAS-CONF-2013-030* (2013).
- [23] R. Dermisek and J.F. Gunion, *Escaping the large fine tuning and little hierarchy problems in the next to minimal supersymmetric model and $h \rightarrow aa$ decays*, *Phys. Rev. Lett.* **95** (2005) 041801 [[hep-ph/0502105](#)] [[INSPIRE](#)].
- [24] R. Dermisek and J.F. Gunion, *Consistency of LEP event excesses with an $h \rightarrow aa$ decay scenario and low-fine-tuning NMSSM models*, *Phys. Rev. D* **73** (2006) 111701 [[hep-ph/0510322](#)] [[INSPIRE](#)].

- [25] R. Dermisek and J.F. Gunion, *The NMSSM solution to the fine-tuning problem, precision electroweak constraints and the largest LEP Higgs event excess*, *Phys. Rev. D* **76** (2007) 095006 [[arXiv:0705.4387](#)] [[INSPIRE](#)].
- [26] S. Chang, R. Dermisek, J.F. Gunion and N. Weiner, *Nonstandard Higgs boson decays*, *Ann. Rev. Nucl. Part. Sci.* **58** (2008) 75 [[arXiv:0801.4554](#)] [[INSPIRE](#)].
- [27] R. Dermisek and J.F. Gunion, *New constraints on a light CP-odd Higgs boson and related NMSSM Ideal Higgs scenarios*, *Phys. Rev. D* **81** (2010) 075003 [[arXiv:1002.1971](#)] [[INSPIRE](#)].
- [28] ATLAS, DELPHI, L3 AND OPAL collaboration, THE LEP WORKING GROUP FOR HIGGS BOSON SEARCHES, *Search for neutral MSSM Higgs bosons at LEP*, *LHWG-Note-2005-01* (2005).
- [29] H.E. Haber and D. O'Neil, *Basis-independent methods for the two-Higgs-doublet model III: the CP-conserving limit, custodial symmetry and the oblique parameters S, T, U*, *Phys. Rev. D* **83** (2011) 055017 [[arXiv:1011.6188](#)] [[INSPIRE](#)].
- [30] PARTICLE DATA GROUP collaboration, J. Beringer et al., *Review of particle physics*, *Phys. Rev. D* **86** (2012) 010001 [[INSPIRE](#)].
- [31] A. Djouadi, *The Anatomy of electro-weak symmetry breaking. I: the Higgs boson in the standard model*, *Phys. Rept.* **457** (2008) 1 [[hep-ph/0503172](#)] [[INSPIRE](#)].
- [32] A. Djouadi, *The Anatomy of electro-weak symmetry breaking. II. the Higgs bosons in the minimal supersymmetric model*, *Phys. Rept.* **459** (2008) 1 [[hep-ph/0503173](#)] [[INSPIRE](#)].
- [33] CERN Higgs Working Group, <https://twiki.cern.ch/twiki/bin/view/LHCPhysics/CrossSections>.
- [34] R. Barbieri, D. Buttazzo, K. Kannike, F. Sala and A. Tesi, *Exploring the Higgs sector of a most natural NMSSM*, *Phys. Rev. D* **87** (2013) 115018 [[arXiv:1304.3670](#)] [[INSPIRE](#)].
- [35] M. Spira, <http://people.web.psi.ch/spira/>.
- [36] M. Spira, *HIGLU: a program for the calculation of the total Higgs production cross-section at hadron colliders via gluon fusion including QCD corrections*, [hep-ph/9510347](#) [[INSPIRE](#)].
- [37] M. Frank et al., *The Higgs boson masses and mixings of the complex MSSM in the Feynman-diagrammatic approach*, *JHEP* **02** (2007) 047 [[hep-ph/0611326](#)] [[INSPIRE](#)].
- [38] G. Degrandi, S. Heinemeyer, W. Hollik, P. Slavich and G. Weiglein, *Towards high precision predictions for the MSSM Higgs sector*, *Eur. Phys. J. C* **28** (2003) 133 [[hep-ph/0212020](#)] [[INSPIRE](#)].
- [39] S. Heinemeyer, W. Hollik and G. Weiglein, *The masses of the neutral CP-even Higgs bosons in the MSSM: accurate analysis at the two loop level*, *Eur. Phys. J. C* **9** (1999) 343 [[hep-ph/9812472](#)] [[INSPIRE](#)].
- [40] S. Heinemeyer, W. Hollik and G. Weiglein, *FeynHiggs: a program for the calculation of the masses of the neutral CP even Higgs bosons in the MSSM*, *Comput. Phys. Commun.* **124** (2000) 76 [[hep-ph/9812320](#)] [[INSPIRE](#)].
- [41] J. Rathsman and T. Rossler, *Closing the window on light charged Higgs bosons in the NMSSM*, *Adv. High Energy Phys.* **2012** (2012) 853706 [[arXiv:1206.1470](#)] [[INSPIRE](#)].
- [42] A.L. Read, *Modified frequentist analysis of search results (the CL_s method)*, CERN Yellow report 2000-205 (2000).
- [43] ATLAS, CMS collaboration, LHC HIGGS COMBINATION GROUP, *Procedure for the LHC Higgs boson search combination in Summer 2011*, *ATL-PHYS-PUB-2011-11* (2011) [[CMS-NOTE-2011-005](#)].

- [44] <http://madgraph.phys.ucl.ac.be/>.
- [45] J. Alwall, M. Herquet, F. Maltoni, O. Mattelaer and T. Stelzer, *MadGraph 5 : Going Beyond*, *JHEP* **06** (2011) 128 [[arXiv:1106.0522](#)] [[INSPIRE](#)].
- [46] N.D. Christensen and C. Duhr, *FeynRules — Feynman rules made easy*, *Comput. Phys. Commun.* **180** (2009) 1614 [[arXiv:0806.4194](#)] [[INSPIRE](#)].
- [47] N.D. Christensen et al., *A comprehensive approach to new physics simulations*, *Eur. Phys. J. C* **71** (2011) 1541 [[arXiv:0906.2474](#)] [[INSPIRE](#)].
- [48] N.D. Christensen, C. Duhr, B. Fuks, J. Reuter and C. Speckner, *Introducing an interface between WHIZARD and FeynRules*, *Eur. Phys. J. C* **72** (2012) 1990 [[arXiv:1010.3251](#)] [[INSPIRE](#)].
- [49] C. Duhr and B. Fuks, *A superspace module for the FeynRules package*, *Comput. Phys. Commun.* **182** (2011) 2404 [[arXiv:1102.4191](#)] [[INSPIRE](#)].
- [50] C. Degrande et al., *UFO — The Universal FeynRules Output*, *Comput. Phys. Commun.* **183** (2012) 1201 [[arXiv:1108.2040](#)] [[INSPIRE](#)].
- [51] A. Alloul, J. D’Hondt, K. De Causmaecker, B. Fuks and M. Rausch de Traubenberg, *Automated mass spectrum generation for new physics*, *Eur. Phys. J. C* **73** (2013) 2325 [[arXiv:1301.5932](#)] [[INSPIRE](#)].
- [52] T. Gleisberg et al., *Event generation with SHERPA 1.1*, *JHEP* **02** (2009) 007 [[arXiv:0811.4622](#)] [[INSPIRE](#)].
- [53] S. Schumann and F. Krauss, *A parton shower algorithm based on Catani-Seymour dipole factorisation*, *JHEP* **03** (2008) 038 [[arXiv:0709.1027](#)] [[INSPIRE](#)].
- [54] F. Krauss, R. Kuhn and G. Soff, *AMEGIC++ 1.0: A Matrix Element Generator In C++*, *JHEP* **02** (2002) 044 [[hep-ph/0109036](#)] [[INSPIRE](#)].
- [55] T. Gleisberg and S. Hoeche, *Comix, a new matrix element generator*, *JHEP* **12** (2008) 039 [[arXiv:0808.3674](#)] [[INSPIRE](#)].
- [56] CDF collaboration, T. Aaltonen et al., *Search for a very light CP-odd Higgs boson in top quark decays from $p\bar{p}$ collisions at 1.96 TeV*, *Phys. Rev. Lett.* **107** (2011) 031801 [[arXiv:1104.5701](#)] [[INSPIRE](#)].
- [57] ALEPH collaboration, A. Heister et al., *Search for charged Higgs bosons in e^+e^- collisions at energies up to $\sqrt{s} = 209$ GeV*, *Phys. Lett. B* **543** (2002) 1 [[hep-ex/0207054](#)] [[INSPIRE](#)].
- [58] L3 collaboration, P. Achard et al., *Search for charged Higgs bosons at LEP*, *Phys. Lett. B* **575** (2003) 208 [[hep-ex/0309056](#)] [[INSPIRE](#)].
- [59] DELPHI collaboration, J. Abdallah et al., *Search for charged Higgs bosons at LEP in general two Higgs doublet models*, *Eur. Phys. J. C* **34** (2004) 399 [[hep-ex/0404012](#)] [[INSPIRE](#)].
- [60] OPAL collaboration, G. Abbiendi et al., *Search for charged Higgs bosons in e^+e^- collisions at $\sqrt{s} = 189 - 209$ GeV*, *Eur. Phys. J. C* **72** (2012) 2076 [[arXiv:0812.0267](#)] [[INSPIRE](#)].
- [61] LEP HIGGS WORKING GROUP FOR HIGGS BOSON SEARCHES, ALEPH, DELPHI, L3, OPAL collaboration, *Search for charged Higgs bosons: preliminary combined results using LEP data collected at energies up to 209 GeV*, [hep-ex/0107031](#) [[INSPIRE](#)].
- [62] D0 collaboration, V. Abazov et al., *Search for charged Higgs bosons in decays of top quarks*, *Phys. Rev. D* **80** (2009) 051107 [[arXiv:0906.5326](#)] [[INSPIRE](#)].
- [63] A. Martyniuk, *A search for a light charged Higgs boson decaying to $c\bar{s}$ at $\sqrt{s} = 7$ TeV*, CERN-THESIS-2011-188 (2011).

- [64] R. Dermíšek, J.P. Hall, E. Lunghi and S. Shin, *Search of the heavy charged Higgs produced from a heavy neutral Higgs decay at the LHC*, work in progress.
- [65] CMS collaboration, *Measurement of WW production rate*, [CMS-PAS-SMP-12-013](#) (2012).
- [66] D. Curtin, P. Jaiswal and P. Meade, *Charginos hiding in plain sight*, *Phys. Rev. D* **87** (2013) 031701 [[arXiv:1206.6888](#)] [[INSPIRE](#)].
- [67] A. Djouadi, J. Kalinowski and P. Zerwas, *Two and three-body decay modes of SUSY Higgs particles*, *Z. Phys. C* **70** (1996) 435 [[hep-ph/9511342](#)] [[INSPIRE](#)].
- [68] J.P. Hall, *Two- and three-body decays for extended Higgs sectors with doublets and singlets*, in preparation.
- [69] S. Larin, T. van Ritbergen and J.A.M. Vermaseren, *The Large top quark mass expansion for Higgs boson decays into bottom quarks and into gluons*, *Phys. Lett. B* **362** (1995) 134 [[hep-ph/9506465](#)] [[INSPIRE](#)].
- [70] K.G. Chetyrkin and A. Kwiatkowski, *Second order QCD corrections to scalar and pseudoscalar Higgs decays into massive bottom quarks*, *Nucl. Phys. B* **461** (1996) 3 [[hep-ph/9505358](#)] [[INSPIRE](#)].