

## RESEARCH ARTICLE

## Open Access



# Gene stacking in plant cell using recombinases for gene integration and nucleases for marker gene deletion

Soumen Nandy<sup>1</sup>, Shan Zhao<sup>1</sup>, Bhuvan P Pathak<sup>1</sup>, Muthusamy Manoharan<sup>2</sup> and Vibha Srivastava<sup>1\*</sup>

## Abstract

**Background:** Practical approaches for multigene transformation and gene stacking are extremely important for engineering complex traits and adding new traits in transgenic crops. Trait deployment by gene stacking would greatly simplify downstream plant breeding and trait introgression into cultivars. Gene stacking into pre-determined genomic sites depends on mechanisms of targeted DNA integration and recycling of selectable marker genes. Targeted integrations into chromosomal breaks, created by nucleases, require large transformation efforts.

Recombinases such as Cre-*lox*, on the other hand, efficiently drive site-specific integrations in plants. However, the reversibility of Cre-*lox* recombination, due to the incorporation of two *cis*-positioned *lox* sites, presents a major bottleneck in its application in gene stacking. Here, we describe a strategy of resolving this bottleneck through excision of one of the *cis*-positioned *lox*, embedded in the marker gene, by nuclease activity.

**Methods:** All transgenic lines were developed by particle bombardment of rice callus with plasmid constructs. Standard molecular approach was used for building the constructs. Transgene loci were analyzed by PCR, Southern hybridization, and DNA sequencing.

**Results:** We developed a highly efficient gene stacking method by utilizing powerful recombinases such as Cre-*lox* and FLP-*FRT*, for site-specific gene integrations, and nucleases for marker gene excisions. We generated Cre-mediated site-specific integration locus in rice and showed excision of marker gene by I-SceI at ~20 % efficiency, seamlessly connecting genes in the locus. Next, we showed ZFN could be used for marker excision, and the locus can be targeted again by recombinases. Hence, we extended the power of recombinases to gene stacking application in plants. Finally, we show that heat-inducible I-SceI is also suitable for marker excision, and therefore could serve as an important tool in streamlining this gene stacking platform.

**Conclusions:** A practical approach for gene stacking in plant cell was developed that allows targeted gene insertions through rounds of transformation, a method needed for introducing new traits into transgenic lines for their rapid deployment in the field. By using Cre-*lox*, a powerful site-specific recombination system, this method greatly improves gene stacking efficiency, and through the application of nucleases develops marker-free, seamless stack of genes at pre-determined chromosomal sites.

**Keywords:** Gene stacking, Multigene transformation, Site-specific recombination, Targeted gene integration, Cre-*lox*, FLP-*FRT*, I-SceI, ZFN

## Background

Practical approaches for gene stacking are a critical need of crop biotechnology as the future requires multigene engineering for expressing complex traits, and periodic introduction of new traits into the previously engineered crops. The conventional methods of

plant transformation integrate genes into undetermined chromosomal sites. As a result, breeding of transgenes into a single line becomes exponentially complex with the increase of transgenic donor lines or the number of independently segregating transgenes. To avoid segregation of transgenes, methods for targeted gene integration into the pre-determined genomic sites or gene stacking are needed. Gene stacking can resolve the complexity of multi-trait

\* Correspondence: [vibhas@uark.edu](mailto:vibhas@uark.edu)

<sup>1</sup>Department of Crop, Soil & Environmental Science, 115 Plant Science Building, University of Arkansas, Fayetteville, AR 72701, USA  
Full list of author information is available at the end of the article

breeding, and ensure timely deployment of new traits into diverse crop varieties [1]. Targeted gene integration can be practiced by two distinct approaches, homologous (and non-homologous) recombination into the chromosomal double-stranded breaks (DSB) induced by synthetic or rare nucleases [2–4], and site-specific recombination (SSR) into the pre-integrated recombination sites [5–7]. Since the repair of DSBs could occur through one of the multiple pathways [8], precise targeted gene integration is practically a rare outcome, requiring development and screening of a high number of transgenic clones [3, 4]. SSR, on the other hand, is a simple, predictable reaction leading to a high number of transgenic clones that contain precise site-specific integration [9–13].

A number of SSR systems are known, *Cre-lox* among them stands out for its high efficiency in complex genome engineering in eukaryotic cells including plants [14–17]. So far, four SSR systems have been successfully used for directing site-specific integration (SSI) in plants, that include *Cre-lox*, *FLP-FRT*, *R-RS*, and *Bxb1* [9, 12, 18, 19]. The efficiency of *Cre-lox* and *FLP-FRT* combined with the strategy to select SSI clones greatly improves the transformation pipeline through high SSI recovery rates and enhanced production of stable lines [13, 20–22]. However, *Cre-lox* and *FLP-FRT* recombination are reversible as they generate two recombination sites (*loxP* or *FRT*) in SSI (*cis*-positioned) that can recombine to reverse the structure. While, mechanisms of controlling the reversibility of recombination are highly effective [9, 10, 13, 23], they are not suitable for the iterative applications. Previously, we developed a selection marker gene (SMG)-free site-specific integration approach based on the use of *FLP-FRT* for gene integration followed by the use of *Cre-lox* for SMG-deletion [24]. This approach generated marker-free lines in a single generation that transmitted the marker-free SSI to the progeny at >95 % efficiency. While, this approach is suitable for integrating DNA constructs containing multiple genes, it cannot easily be used for the repeated rounds of transformation that would be needed for adding new traits to the 'stacked site'.

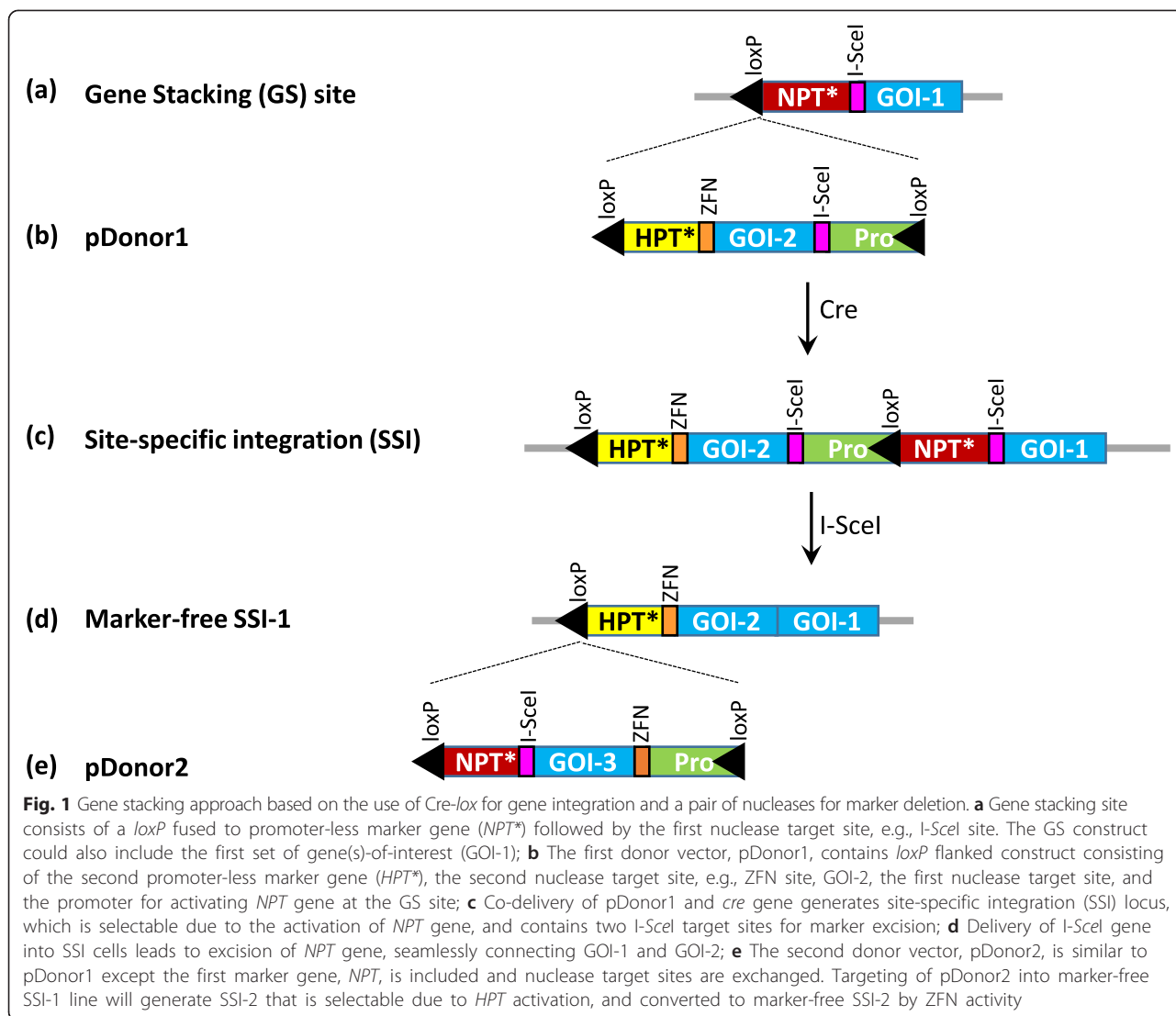
Here, we modified the 'marker-free site-specific integration' approach by introducing nucleases for SMG deletion. Concomitant cuts on a chromosome could delete the intervening fragment, and the broken ends of the chromosome could join through DNA repair process. The repaired site incorporates sequence changes that are no longer targeted by the same nuclease [8]. Therefore, a given nuclease can be used again for SMG deletion. If one of the two *cis*-positioned *lox* or *FRT* is present within this fragment, it will also be deleted, leaving a single site for gene stacking. This modified method for marker-free site-specific integration is suitable for iterative gene stacking. Each of the steps in this method,

individually, have been demonstrated by earlier studies. *Cre* or *FLP*-mediated site-specific gene integration, and nuclease mediated DNA deletion have all been demonstrated in plants [9–13, 25–28]. However, these diverse molecular mechanisms have not been integrated in a single platform. Where *Cre-lox* is well-known for generating highly precise recombination products [16], nuclease-induced DSB repair could create insertion-deletions (indels) at the site [8]. Therefore, for this gene stacking approach to be successful, it is important to establish that nuclease-induced indels would not alter the adjacent sequences, too often, or interfere with *Cre-lox* components in the iterative site-specific integrations. The focus of the present work is to develop the proof-of-concept for the proposed marker-free gene stacking strategy by characterizing the deletion sites induced by *I-SceI* and *CCR5-ZFN* at the *Cre*-mediated SSI locus in rice, and demonstrate the second round of site-specific integration in the same site. We first generated SSI lines using a founder line, T5, and subjected them to SMG deletion by *I-SceI*, and carried out a second round of site-specific integration by *FLP-FRT* and characterized *CCR5-ZFN* mediated DSB/repair sites. We also tested the utility of heat-inducible *I-SceI* and *ZFN* in DNA deletions. Overall, this work shows that *Cre-lox* and *FLP-FRT* can be used for gene stacking in plants, and their power extended to iterative genome engineering applications.

## Results

### Molecular strategy

The strategy of iterative gene stacking is based on the use of an efficient site-specific recombination (SSR) system and a pair of nucleases to direct transgene integration and selection marker gene (SMG) deletion, respectively (Fig. 1). We propose using *Cre-lox* or *FLP-FRT* for transgene integration for their robust activity and high specificity in plants [14, 15]. *Cre* or *FLP*-mediated gene integration, however, results in the incorporation of two *cis*-positioned *lox* or *FRT* sites (Fig. 1a-c), which can excise out the integrated DNA in the subsequent rounds of transformation. Therefore, SMG deletion is carried out by nuclease, which removes one of the two *cis*-positioned recombination sites along with the SMG fragment (Fig. 1d). The single recombination site in the SMG-free SSI site serves as the target for the next round of site-specific integration. It should be noted that SMG removal is an integral step in gene stacking, therefore, no extra effort is added in this strategy. We used efficient nucleases, *I-SceI* and *CCR5-ZFN*, in this study; however, other nuclease technologies, if found to be efficient, can also be used. As shown in Fig. 1, the strategy utilizes promoter/gene trap to isolate site-specific integration events (Fig. 1a-c), which are subjected to nuclease-mediated marker deletion to generate



marker-free SSI (Fig. 1d). This process could be repeated to achieve gene stacking into the selected chromosomal sites.

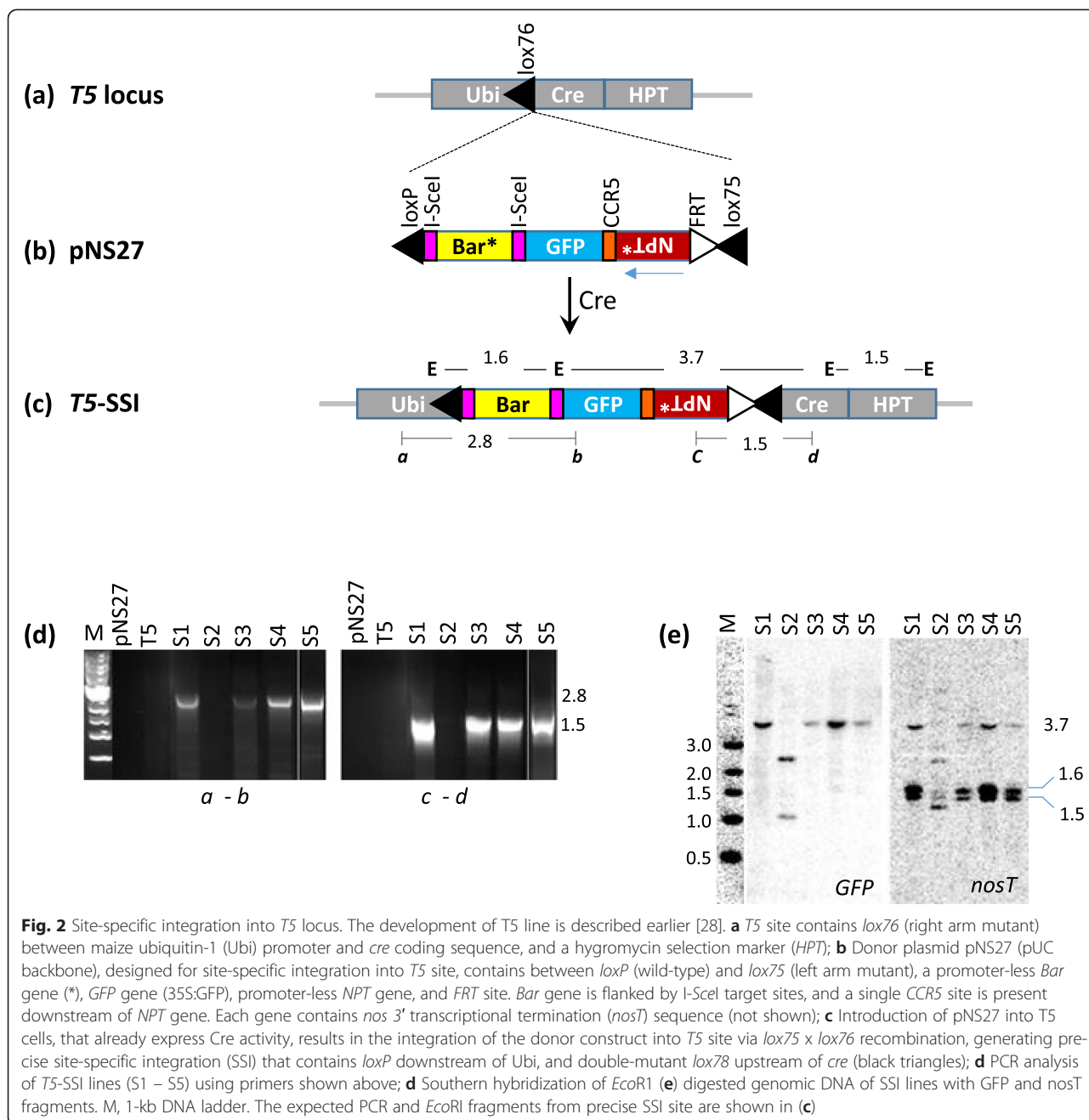
#### Development of site-specific integration lines

To develop SSI locus containing I-SceI and ZFN target sites, pNS27 was developed for DNA integration into *T5* site, which contains a *lox76* site for Cre-mediated gene integration, and expresses Cre activity (Fig. 2a). pNS27 contains promoter-less *Bar* gene flanked by I-SceI target sites, *GFP* gene, *CCR5* site (ZFN target), and promoter-less *NPT II* gene fused to *FRT* for FLP-mediated site-specific integration (Fig. 2b). Delivery of pNS27 into *T5* calli generated 5 bialaphos-resistant SSI lines, S1 – S5, from ten bombarded calli plates. All except one (S2) were confirmed to contain the expected SSI structure by PCR, sequencing, and Southern hybridization (Fig. 2c-e;

sequencing data not shown). Two of these (S1 and S4) were used for the subsequent work.

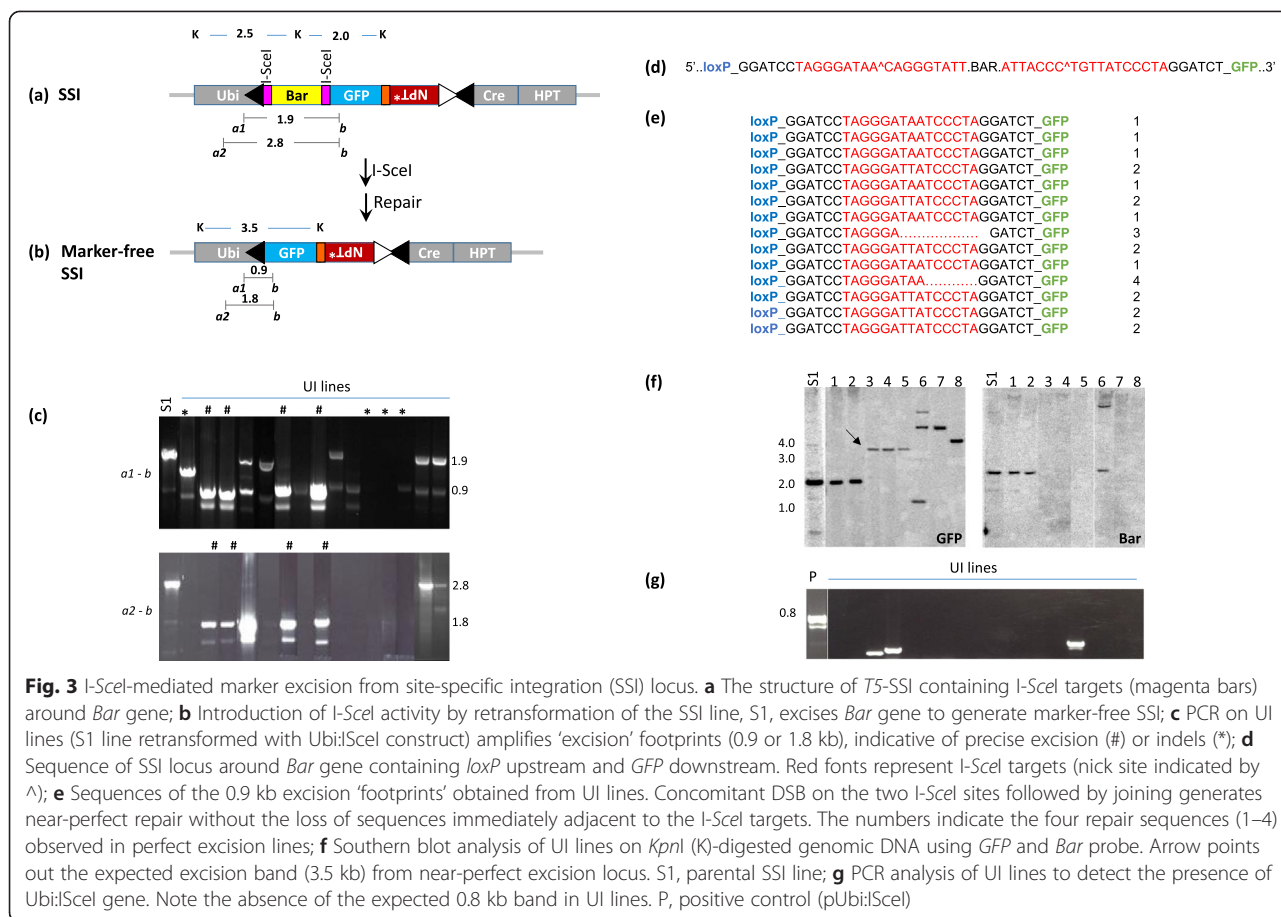
#### I-SceI-mediated marker deletion from SSI locus

S1 and S4 were retransformed by co-bombardment with pUb:I-SceI and pSS1 (the selection plasmid containing 35S:*NPT* gene), and the calli were selected on geneticin. The resistant lines were analyzed for the deletion of *Bar* gene from the SSI locus. A total of 72 geneticin resistant callus lines (UI) were isolated, each of which was subjected to PCR using primers around the *Bar* gene (Fig. 3a-b). The concomitant DSBs created by I-SceI are expected to delete the *Bar* gene, and the broken ends would be repaired through the DNA repair process. Since homologous DNA sequences are not present at the broken ends, repair through non-homologous end joining mechanism would occur that incorporates insertions – deletions (indels) at the repaired site [8]. The



uncut SSI locus is expected to generate 1.9 and 2.8 kb amplicons with primers *a1-b* and *a2-b*; however, precise deletion of *Bar* would reduce the amplicon size to 0.9 and 1.8, respectively (Fig. 3a-b). Fourteen UI lines (19.4 %) showed 0.9 and 1.8 kb bands without the presence of the parental bands in PCR with *a1 - b* and *a2 - b*, indicating near-perfect repair of the cut site (Fig. 3c; Table 1). Sequencing of 0.9 kb fragments showed that the excision-repair in these lines occurred without the loss of sequences immediately adjacent to the *I-SceI* sites, confirming near-perfect repair of the site (Fig. 3d-

e). These 14 lines contained 4 types (1 – 4) of the repaired sequences, with type 1 and 2 found frequently, and type 3 and 4 found in one line each (Fig. 3e). Specifically, 12 lines contained either type 1 (TAGGGA TAATCCCTA) or type 2 (TAGGGATTAATCCCTA) sequence that differed in the 5'-overhang (5'-ATAA) generated by the *I-SceI* cut. Since the overhangs from the two sites (upstream and downstream of *Bar*; Fig. 3d) are complementary in 2 of 4 bases, they could initiate microhomology based recombination [29, 30]. Type 3 and 4, on the other hand, contain very short deletions



**Fig. 3** I-SceI-mediated marker excision from site-specific integration (SSI) locus. **a** The structure of T5-SSI containing I-SceI targets (magenta bars) around *Bar* gene; **b** Introduction of I-SceI activity by retransformation of the SSI line, S1, excises *Bar* gene to generate marker-free SSI; **c** PCR on UI lines (S1 line retransformed with Ubi:I-SceI construct) amplifies ‘excision’ footprints (0.9 or 1.8 kb), indicative of precise excision (#) or indels (\*); **d** Sequence of SSI locus around *Bar* gene containing *loxP* upstream and *GFP* downstream. Red fonts represent I-SceI targets (nick site indicated by ^); **e** Sequences of the 0.9 kb excision ‘footprints’ obtained from UI lines. Concomitant DSB on the two I-SceI sites followed by joining generates near-perfect repair without the loss of sequences immediately adjacent to the I-SceI targets. The numbers indicate the four repair sequences (1–4) observed in perfect excision lines; **f** Southern blot analysis of UI lines on *KpnI* (K)-digested genomic DNA using *GFP* and *Bar* probe. Arrow points out the expected excision band (3.5 kb) from near-perfect excision locus. S1, parental SSI line; **g** PCR analysis of UI lines to detect the presence of Ubi:I-SceI gene. Note the absence of the expected 0.8 kb band in UI lines. P, positive control (pUbi:I-SceI)

(≤10 bases) at the repair site. The rest of the lines either contained no change or imperfect deletion (Fig. 3c; Table 1). Seven lines (9.7 %) contained short indels at the excision site, indicated by amplification of bands larger or smaller than 0.9 or 1.8 kb. Twenty five lines (48.6 %) did not amplify any product, indicating the presence of large indels at the excision site, and 26 lines (36 %) amplified the parental 1.9 and/or 2.8 kb band expected from the intact SSI site (no change). While, large indels could not be analyzed due to the lack of PCR amplification, analysis of short indels showed that DSB sites frequently incorporated vector DNA sequences,

while one line contained rice mitochondrial DNA (data not shown).

Southern blot analysis was done on the genomic DNA isolated from the regenerated plants of the UI lines. Probing of the *KpnI*-digested genomic DNA with *GFP* fragment generated the expected ~2 kb band from S1 parent, which upon deletion of *Bar* fragment that contains a *KpnI* site is expected to increase to 3.5 kb (Fig. 3a-b). Southern data corroborated with the PCR data as the UI lines that were found to contain the near-perfect deletion in PCR showed 3.5 kb band upon hybridization with *GFP*, and those having imperfect

**Table 1** I-SceI and ZFN activity at the site-specific integration locus

Lines	Nuclease	Expression system <sup>1</sup>	Total #	Perfect deletion <sup>2</sup>	Short indels <sup>3</sup>	Large indels <sup>4</sup>	No change <sup>5</sup>
UI	I-SceI	Constitutive	72	14	7	25	26
UZ	ZFN	Constitutive	68	4	5	38	21
HI	I-SceI	Heat-shock	7	3	-	-	4
HZ	ZFN	Heat-shock	23	-	-	13	10

<sup>1</sup>Strong constitutive (Ubi promoter) or heat-shock (HS) expression

<sup>2</sup>< 15 bp indel at the target without the loss of sequences immediately adjacent to the nuclease target

<sup>3</sup>50–200 bp insertion or deletion

<sup>4</sup>No amplicons obtained in PCR

<sup>5</sup>No DSB-repair as indicated by PCR and/or sequencing

deletions (short/large indels) showed variable sizes, while the lines found to contain the parental locus showed the intact 2 kb band (Fig. 3f). Re-probing this blot with the *Bar* fragment confirmed complete deletion of *Bar* gene from the 'near-perfect' UI lines (Fig. 3f). In the PCR to amplify *I-SceI* gene, surprisingly, none of the UI lines were found to contain full *I-SceI* construct as indicated by the absence the expected 0.8 kb amplicon or the presence of smaller amplicons indicating truncated/rearranged *I-SceI* fragments (Fig. 3g). The exclusion of the functional *I-SceI* gene in UI lines points to the potential toxicity of the strong constitutive *I-SceI* activity in rice. Therefore, deletion of *Bar* gene in rice cells essentially occurred by the transient *I-SceI* expression. This data also explains the failure of *Bar* deletion in a large proportion of UI lines (36 %). A BLAST search for *I-SceI* target site identity in rice genome found partial matches with 14 loci, in which 10–15 bases out of 18 base *I-SceI* sequence ( $\leq 70$  %) matched. Two of these loci that showed 15 and 13 base match on chromosome 10 were analyzed. PCR/sequencing of these sites (NC\_008403.2|:22808202–22809528 and NC\_008403.2|:20914800–20915400) in 6 different UI lines, three of which contained perfect *Bar* deletion, found no sequence change (Data not shown). In summary, *I-SceI* mediated marker deletion was found to occur in 46 of 72 lines (63 %), 14 of which (19.4 %) showed perfect deletion without the loss of the adjacent sequences at the SSI locus. Marker-deletion in the SSI lines essentially occurred by the transient *I-SceI* activity as strong constitutive expression appeared to be toxic to rice genome.

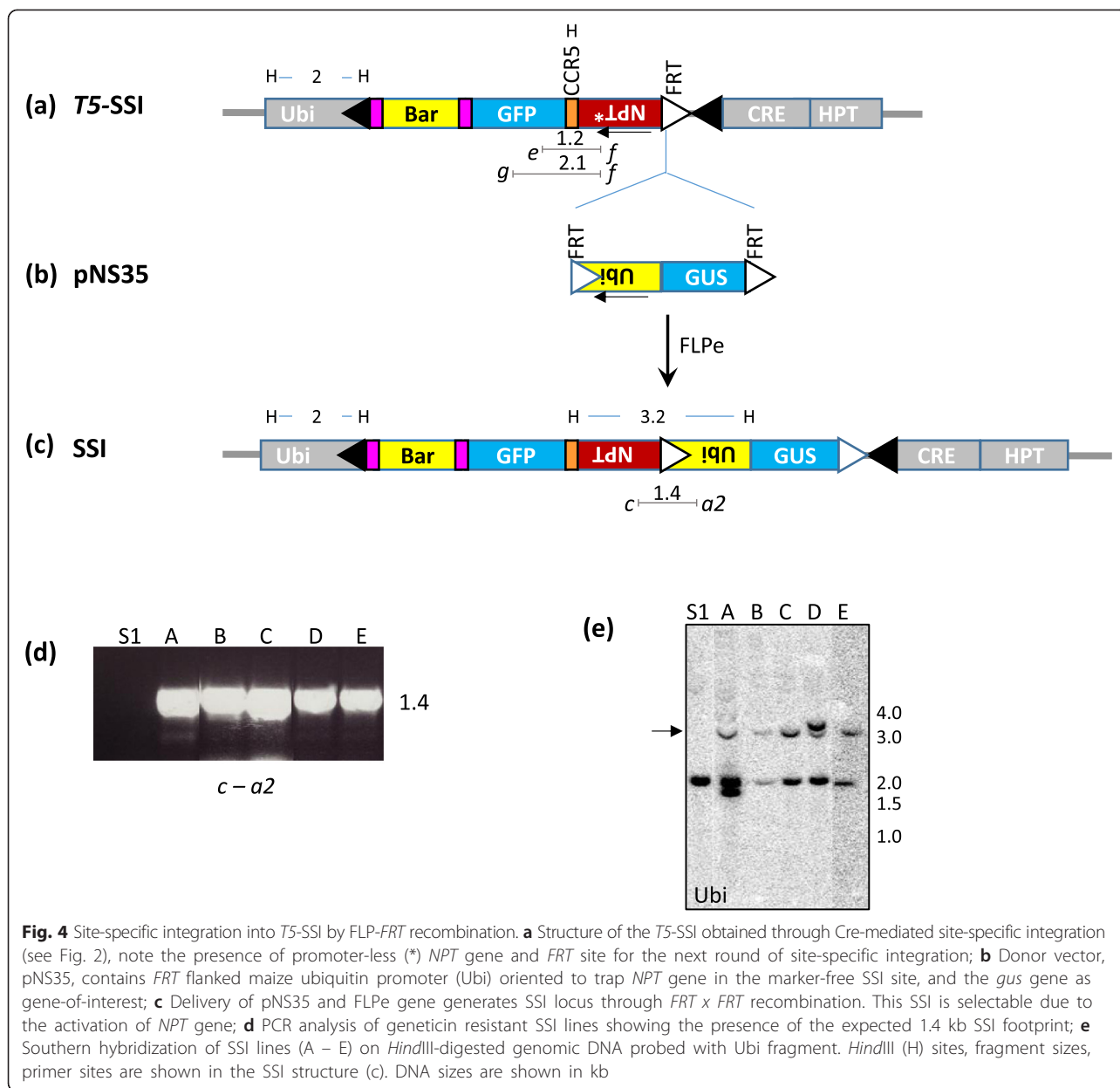
#### Subsequent rounds of site-specific integration by FLP-*FRT* system

The gene stacking strategy shown in Fig. 1 can be practiced by a single SSR system. However, *T5* locus used in the present work is not designed for iterative gene stacking, therefore, we included an *FRT* site in pNS27 construct for FLP-mediated site-specific integrations into marker-free SSI lines. The *T5*-SSI locus contains a promoter-less *NPT* gene fused to *FRT* site. Therefore, site-specific integration into *FRT* site will be selectable through *NPT* activation. This strategy of promoter - gene fusion based selection in which an *FRT* site is located between the promoter and *NPT* gene (Fig. 4a-c) was demonstrated in our previous work [13]. Using the same strategy, we showed that the *FRT* located in the SSI site, e.g., S1 locus, can be targeted for gene stacking by subsequent transformation. A new donor vector, pNS35 that contains *FRT*-flanked Ubi promoter, was delivered by co-bombardment with pUbiFLPe into S1 line, and the geneticin-resistant lines were analyzed by PCR and Southern hybridization for the presence of SSI structure arising from *FRT* x *FRT* recombination (Fig. 4b-c). The

use of FLPe is critical in obtaining site-specific integration as this variant of FLP is several fold more efficient in both DNA excisions and integrations [13, 31, 32]. From the bombardment of 10 plates, 5 SSI lines (A – E) were recovered that expressed *GFP* and *GUS* (data not shown), and contained the predicted 1.4 kb Ubi:*NPT* fusion in PCR with primers *c* and *a2* (Fig. 4c-d). Southern hybridization of the *HindIII* (H) digested DNA of these lines with Ubi probe showed the presence of the expected ~3.2 and 2 kb bands in each line, while the parent S1 line contained only 2 kb band. Two of the SSI lines (A and D) contained additional bands, while the remaining three contained only the expected bands, indicating the absence of extra-SSI fragments (Fig. 4e). Overall, this analysis confirmed the reactivity of the *FRT* site in the SSI locus and validated its suitability as the target for the next round of gene stacking.

#### Testing ZFN activity in rice genome

As shown in Fig. 1, two nucleases are required for the alternating use in the gene stacking process. The second nuclease tested in this study is ZFN that targets human *CCR5* sequence [33]. A single *CCR5* site consisting of 33 nucleotides is located in the SSI locus (Fig. 5a). To test the activity of ZFN at this site, S1 line was retransformed with pUbi:ZFN, and the transformed callus lines (UZ lines) were analyzed by PCR using primers *e* and *f* (Fig. 4a). This PCR is expected to generate 1.2 kb amplicon from the SSI locus, and upon DSB/repair at *CCR5* site, could either generate the same size amplicon (very short indels or no change), variable size amplicon (short indels) or no amplicon (large indels). A total of 68 UZ lines were analyzed, 38 of which (55.8 %) did not generate any amplicon, indicating the presence of large indels. The sequencing of the amplicons obtained (sizes ranging from 0.8 to 1.1 kb) from the remaining 30 lines, showed that 21 lines contained no sequence change, and nine contained very short or short indels at the *CCR5* site (30 %) (Table 1). Four of these lines contained a very short insertion or deletion, with three lines containing only 3–14 bp deletion and 1 line containing 3 bp insertion (Fig. 5a). Overall, this analysis indicated that *CCR5*-ZFN efficiently creates DSB at the *CCR5* site placed in the rice genome, as 47 out of 68 lines (69 %) contained indels at the *CCR5* site. However, most of these lines contained large indels and possibly incorporated sequences of the introduced plasmid DNA. To distinguish between large deletions and insertions, PCR on 24 of these lines was conducted using primers *g* and *f* that is expected to amplify 2.1 kb fragment from the SSI locus (Fig. 4a). Thirteen of these lines amplified fragments of variable sizes, indicating large (>1 kb) deletions at the *CCR5* site, since the analysis was done on callus, which could consist of more than one cell line, most of these

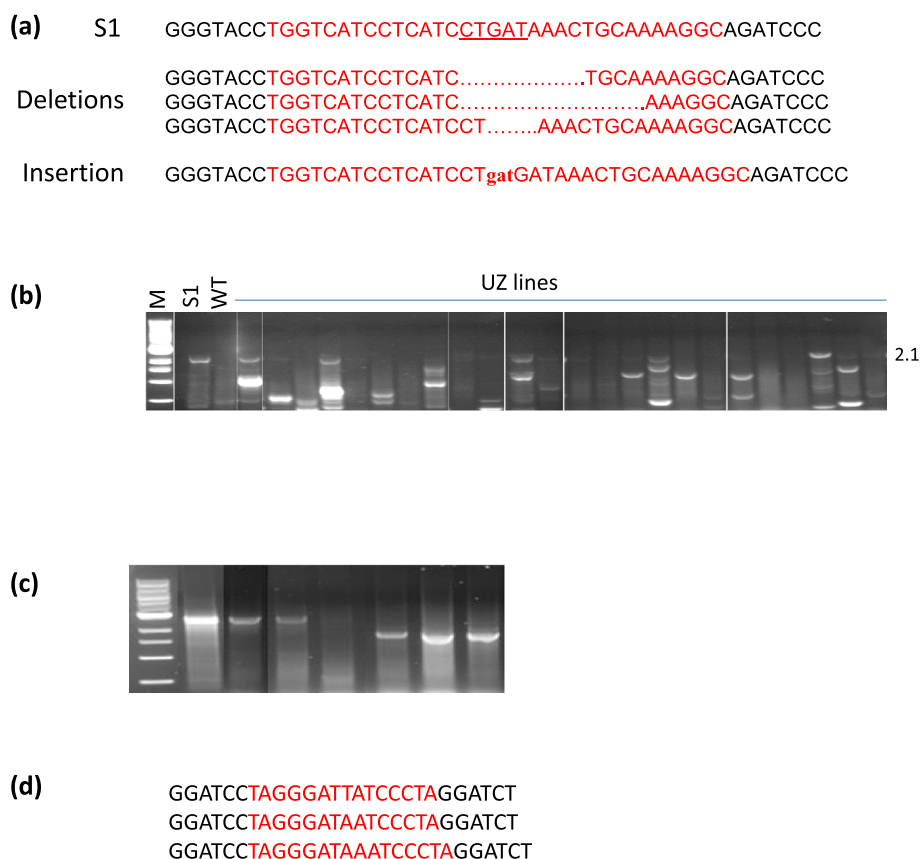


samples also generated the parental 2.1 kb band (Fig. 5b). Although insertion was observed frequently in this study, most likely it occurred due to the presence of high quantities of exogenous DNA in the form of the introduced plasmids. Finally, the integration of ZFN gene in these lines was tested by PCR, which showed that the majority of the lines (46 out of the 68) contained ZFN gene, however, a fair number of lines (22 lines) did not contain ZFN gene, in spite of showing indels at the CCR5 site. Therefore, transient ZFN activity could also induce DSB at CCR5 site in the rice genome. It should be noted that a relatively small quantity of Ubi:ZFN plasmid was bombarded (100 ng per shot), which could

explain a high proportion of lines lacking stable ZFN integration.

#### Testing heat-inducible nuclease activity for marker deletion

The nuclease activity can be introduced into SSI lines by retransformation, genetic crosses or inducing gene activity. The use of inducible nucleases is particularly attractive for reducing effort in the process. Previously, we showed that heat-inducible Cre or FLPe are effective in excising SMG from rice by exposing seedlings to 42 °C for 3 h [24, 34]. Here, we assessed the efficacy of heat-inducible I-SceI and ZFN in deleting SMG from



**Fig. 5** ZFN and heat-inducible I-SceI activity. **a** Sequences of *CCR5* site amplified by PCR using *e - f* primers (see Fig. 4a). Sequences obtained from the parental S1 line and four UZ lines (transformed with pUbi:ZFN). Deletion is shown by dots and insertion by small case letters. Red fonts indicate *CCR5* sequence; **b** PCR analysis of UZ lines with *g - f* primers to detect large deletions at *CCR5* site. Note the presence of <2.1 kb bands in different lanes; **c** PCR analysis of HI lines (1–3, S1 line retransformed with heat-inducible I-SceI gene). HI samples maintained at room temperature (RT) or exposed to heat-shock (HS) were analyzed to detect the excision of *Bar* gene using primers *a2 - b* (see Fig. 3a). Note the presence of 1.8 kb excision footprint in HS samples; **d** Sequences of 1.8 kb excision footprints from HS samples. Red fonts indicate I-SceI target sequences

the *T5-SSI* locus (Fig. 2c). HS:I-SceI or HS:ZFN constructs were introduced into S1 line by retransformation, and the resulting clones (HI or HZ) were confirmed by PCR to contain the respective nuclease gene (Data not shown). Calli of 7 HI and 23 HZ lines were incubated at 42 °C for 3 h, transferred to room temperature for 72 h, and ground for DNA extraction. Due to the presence of two I-SceI targets, I-SceI activity could be detected by PCR using *a2-b* primers (Fig. 3a-b), whereas, ZFN activity can only be detected by sequencing the PCR product as only one ZFN target (*CCR5*) is present (Fig. 4a). Three out of 7 HI lines generated 1.8 kb deletion fragment with *a2 - b* primers in the heat-treated samples (Fig. 5c). Sequencing of these fragments showed near-perfect deletion of *Bar* gene (Fig. 5d), confirming the efficacy of heat-inducible I-SceI. The remaining HI lines showed the parental 2.8 kb band in the heat-treated samples, indicating poor I-SceI induction or gene silencing. PCR analysis of 23

heat-treated HZ lines with *e - f* primers (Fig. 4a) found 1.2 kb amplicon in 10 lines, <1.0 kb amplicon in 2 lines, and no amplification in 11 lines (data not shown), indicating large indels in the latter 13 lines. The sequencing of 1.2 kb amplicons of the former ten lines, however, did not show indels at the *CCR5* site in any of the lines. A number of these lines failed to amplify the expected 1.2 kb band even without heat-treatment, indicating promiscuous ZFN activity. Therefore, more work is needed to determine the efficiency of HS:ZFN for inducible marker excision in plants.

**Discussion**

The current methods of multigene transformations include transfer of large T-DNA or co-transformation of multiple vectors [35, 36], which can deliver multiple genes in a single attempt but are not suitable for the periodic introduction of new genes into the engineered



sites. Targeted gene integrations in plants by synthetic nucleases has been reported in recent years [37–42], the mechanism of which is the repair of chromosomal breaks through homologous recombination. However, since the repair could also occur by joining of the broken chromosomal ends through non-homologous recombination, targeted gene integrations are practically infrequent [4, 39]. Targeted integrations at 3–5 % efficiency has been reported in crop plants [3]; however, it is generally accepted that isolation of targeted events require large transformation efforts even when a selection strategy is employed to isolate targeted insertions [4, 42].

Efficient gene stacking approaches could become widely practiced technologies. The use of *Cre-lox* system, in combination with the selection strategies, is extremely successful in producing high quality SSI clones without significantly lowering plant transformation efficiencies [9, 11]. Similarly, *FLP-FRT* is effective in producing SSI clones at high efficiency in plants [12, 13]. These SSR systems are reliable as they have been widely used and found to be effective in a number of plant species [14]. However, the reversibility of recombination, especially the recombination leading to SSI, remained a major bottleneck in developing iterative site-specific gene integration approaches. The use of mutant *lox* sites for controlling reversibility would allow only two rounds of integrations as the recombination between a set of mutant *lox* sites generates a *loxP* [9], which can be targeted, but two *cis*-positioned *lox* sites will be generated in the resulting SSI that would complicate subsequent use of *Cre*. However, excising one of the two *cis*-positioned sites, along with the marker gene, resolves the bottleneck without increasing the effort, and allows, in principle, unlimited rounds of gene stacking. The use of nucleases for marker excision is of strategic importance as the cut-repair site cannot be targeted by the same nuclease. Recently, a number of studies have described the use of nucleases in targeted mutagenesis [43], demonstrating their effectiveness and efficiency in plants. Excision of marker gene involves two concomitant breaks to delete a precise segment of DNA. Two studies have demonstrated the use of nucleases in marker gene excision. Antunes et al. [25] found ~15 % efficiency of PB1 in *Arabidopsis* for marker excision and inheritance of the excision locus. Petolino et al. [27] used *CCR5-ZFN* to delete transgenes from maize, and reported high rate of excision (35 %) in F1 plants, several of which stably transmitted the excision locus to F2 progeny. For gene stacking application, it is important that the sequences beyond the nuclease target site are preserved, and the integrity of the locus is not compromised. Using heat-inducible PB1, Antunes et al. found a fair number of clones containing very short indels or perfect re-ligation of the cut ends. A similar result was obtained by

Petolino et al. in examining the site that were targeted by ZFN. These reports along with our data confirm the practical application of nucleases in deleting marker genes from plants. The use of inducible nucleases could streamline marker excision process and allow marker excision in the primary transgenic plants. The use of inducible nucleases could also allay the concern of off-target DSBs as we found that rice cells could tolerate heat-inducible *I-SceI* expression, but not the strong constitutive expression. Although, off-targeting by strong constitutive expression of *I-SceI* has not been reported in plants, and we did not find off-targeting at the predicted genomic sites in rice, off-targeting at non-canonical sites has been reported in human genome [44].

The gene stacking strategy presented here can be practiced with the current transformation platforms using dedicated target lines and designed donor constructs. SSR-mediated gene integrations have been practiced with both *Agrobacterium* and particle bombardment methods [12, 13, 23, 28]. Nuclease-mediated marker excisions could be done by genetic crosses or by deploying inducible nucleases as part of the donor construct (Fig. 1b, e: placed next to the promoter-less marker gene, upstream of nuclease target site) and integrating it into SSI structure for controlled ‘auto-excision’, an approach that has been demonstrated with *Cre-lox* [24, 45, 46]. More work is needed to determine the efficiency of the auto-excision approach with nucleases. More importantly, the two nucleases used in this study were effective in creating DSB or deleting marker gene, and, in case of *I-SceI*, preserving the integrity of the SSI locus. Hence, each step of the proposed gene stacking strategy was validated and found to be efficient, suggesting that this method is likely to function at 20 – 50 % efficiency in rice. Its efficiency in other plant species is also expected to be high as the efficiency of *Cre-lox* recombination and nucleases, individually, are reportedly high [27, 45, 47–49]; however species to species variation could occur, e.g., due to variation in DSB repair mechanisms [50].

Gene stacking methods that do not involve the use of nucleases have been reported. Two rounds of recombinase-mediated cassette exchange (RMCE) using 3 hetero-specific *FRT* sites was used for stacking 7 genes in soybean [51]. However, its application in subsequent rounds would be limited by the availability of new hetero-specific *FRT* sites. Currently, only a limited number of hetero-specific *FRT* sites are available, reactivity of which is variable [52]. Bxb1 system involves recombination between two non-identical sites (*attP* × *attB*), which cannot be reversed by Bxb1 recombinase without the helper protein [53]. This unidirectional recombination mechanism was used for gene stacking in tobacco through three rounds of transformation [19]. The resulting ‘stacked’ site,

as expected, contained *attL* and *attR* between each construct, the number of which would increase with each round of site-specific integration. The use of nucleases, on the other hand, deletes all SSR footprints, seamlessly connecting gene constructs in the stacked locus.

## Conclusions

We developed a practical approach of transgene stacking that would facilitate rapid introduction of multiple traits into crop varieties without complicating the downstream breeding process. The present work tested each component of the proposed gene stacking method that involves robust SSR systems for directing gene integrations and nucleases for marker excisions. The use of SSR allowed high rates of targeted integrations, which is a major bottleneck in gene targeting. The nucleases were instead used for excising marker genes that involves DSB repair through a more efficient process of joining chromosomal ends. By using the power of each reagent, this study developed an efficient approach of gene stacking that could integrate new genes to the specified site through unlimited rounds of plant transformations.

## Methods

### Plant line and transformation vectors

Transgenic rice line T5 (in variety Taipei 309) that contains a single *lox76* site (right arm mutant) [9] within the construct as depicted in Fig. 2a and described earlier [28] was used as the founder line for gene stacking. Donor vectors, pNS27 and pNS35, for site-specific integration in *lox76* site and *FRT* site, respectively, were constructed in pBluescript SK backbone. pNS27 (Fig. 2b) consists of a promoter-less *Bar* gene flanked by *I-SceI* target sites (Fig. 3d) followed by a *GFP* gene driven by a 35S promoter as a gene-of-interest, *CCR5* site, the ZFN target, and a promoter-less neomycin phosphotransferase gene (*NPT II*) fused to *FRT* site. The whole construct is flanked by *loxP* upstream and *lox75* downstream. pNS35 (Fig. 4b) contains maize ubiquitin-1 (Ubi) promoter [54] and *GUS* gene flanked by *FRT* sites. Sequences of *lox* and *FRT* are described by Albert et al. [9] and Senecoff et al. [55]. FLPe expression vector, pUbiFLPe, consists of FLPe gene [56] transcribed by Ubi promoter. *I-SceI* and ZFN expression vectors (pUbiISceI, pUbiZFN, pHSISceI, and pHSZFN) either contained Ubi promoter or soybean heat shock 17.5E (HS) promoter [57]. The optimized *I-SceI* coding sequence [58] and the *CCR5*-ZFN coding sequence was provided by Drs. Holger Puchta (Karlsruhe, Germany) and Joseph Petolino (Dow Agro Sciences, Inc.), respectively. Each gene in these vectors contain transcription termination sequence of nopaline synthase gene (*nos 3'*).

### Rice transformation

Rice tissue culture media and protocols were essentially as described by Nishimura et al. [59]. All transformations were done by particle bombardment using PDS 1000/He gene gun (Bio-Rad, Inc.) as described earlier [13]. Scutellar calluses generated from mature seeds were bombarded with 1- $\mu$ m gold particles coated with plasmid DNA. About 25  $\mu$ g of particles were coated with 5  $\mu$ g donor vectors (pNS27 or pNS35) or 1 – 2  $\mu$ g of *I-SceI*/ZFN vectors and used for ten shots (plates). The pNS27-bombarded T5 callus were selected on bialaphos (5 mg/L) to isolate site-specific integration (SSI) lines. The selected SSI lines were bombarded with *I-SceI* or ZFN vectors along with a selection vector, pSS1, which contains 35S promoter driven *NPT II* gene, and selected on geneticin (100 mg/L).

### Molecular analysis

Genomic DNA was isolated from the callus or leaves and subjected to PCR using primers (Table 2) and Taq polymerase following the manufacturer's (Promega, Inc.) recommendations. All PCR reactions consisted of 40 cycles of 1 min denaturation at 94 °C, 1 min annealing at 56 °C and 1 min extension at 72 °C followed by final elongation step for 15 min at 72 °C. For sequencing, the PCR amplicon was extracted from the gel and sequenced by Eurofins MWG Operon Kentucky, and viewed using Sequence Scanner v1.0 (Applied Biosystems). For Southern hybridizations, ~5  $\mu$ g of genomic DNA was digested overnight with appropriate restriction enzyme, fractionated on 0.8 % agarose gel, transferred to a nylon membrane, and hybridized with P<sup>32</sup> labelled DNA probes.

**Table 2** List of primers

Primers	Sequence (5' → 3')
a (or a2)	TCTACTTCTGTTCATGTTTGTG
a1	TCTAACCTTGAGTACCTATCTATTA
b	AAGACCCCAACGAGAAGC
c	CTCGATGCGATGTTTCGCTT
d	CTAATCGCCATCTTCCAGCA
e	ACAGGCTGAACCTGTGGC
f	GATGGATTGCACGCAGGTTT
g	GCCACAAGTTCAGCGTGT
ISceI Forward	GCTGTCTCTCTCACAAG
ISceI Reverse	GGGTCAGGTAGTCTCCACC
ZFN Reverse	TGCAGATCCGACACTGGAAG
Chr 10 locus1 Forward	GCAAGCCGGTCACCATTTTCA
Chr 10 locus1 Reverse	TTCGTTGGTTTGCACGCTAT
Chr 10 locus2 Forward	GAAAGGCGTAACGATCTGGG
Chr 10 locus2 Forward	TAGTACGAGAGGACCCGGAA

### Abbreviations

DSB: Double-stranded break; indels: Insertion-deletion; ZFN: Zinc finger nuclease; SSR: Site-specific recombination; SSI: Site-specific integration; SMG: Selectable marker gene.

### Competing interests

A patent related to the gene stacking approach presented in this paper has been filed by University of Arkansas.

### Authors' contributions

SN constructed vectors, carried out marker excision analysis and Southern analyses, SZ and BP carried out rice transformations and ZFN analysis, MM participated in data analysis and manuscript drafting, VS designed experiments, analyzed data, and wrote the manuscript. All authors read and approved the final manuscript.

### Authors' information

Not applicable.

### Availability of data and materials

Not applicable.

### Acknowledgements

We thank Dr. Holger Puchta (Karlsruhe, Germany) for I-SceI gene, Dr. Joe Petolino for ZFN cDNA, Dr. James Thomson (USDA-ARS) for FLPe construct, and Jamie Underwood and Clinton Greub for technical help in the initial phase of this project.

### Funding

This work was supported by USDA grant# 2010-33522-21715 and Arkansas Bioscience Institute-Division of Agriculture grant to VS; and USDA Capacity Building Grant # 2010-38821-21540 to MM and VS.

### Author details

<sup>1</sup>Department of Crop, Soil & Environmental Science, 115 Plant Science Building, University of Arkansas, Fayetteville, AR 72701, USA. <sup>2</sup>Department of Agriculture, 144 Woodard Hall, University of Arkansas at Pine Bluff, Pine Bluff, AR 71601, USA.

Received: 30 July 2015 Accepted: 1 October 2015

Published online: 09 October 2015

### References

- Que Q, Chilton MD, de Fontes CM, He C, Nuccio M, Zhu T, et al. Trait stacking in transgenic crops: Challenges and opportunities. *GM Crops*. 2010;1(4):220–9.
- D'Halluin K, Ruitter R. Directed genome engineering for genome optimization. *Int J Dev Biol*. 2013;57(6–8):621–7.
- Petolino JF. Genome editing in plants via designed zinc finger nucleases. *In Vitro Cell Dev Biol Plant*. 2015;51(1):1–8.
- Puchta H, Fauser F. Gene targeting in plants: 25 years later. *Int J Dev Biol*. 2013;57(6–8):629–37.
- Ow DW. Recombinase-mediated gene stacking as a transformation operating system. *J Integr Plant Biol*. 2011;53:512–9.
- Srivastava V, Gidoni D. Site-specific gene integration technologies for crop improvement. *In Vitro Cell Dev Biol - Plant*. 2010;46:219–32.
- Wang Y, Yau YY, Perkins-Balding D, Thomson JG. Recombinase technology: applications and possibilities. *Plant Cell Rep*. 2011;30:267–85.
- Puchta H. The repair of double-strand breaks in plants: mechanisms and consequences for genome evolution. *J Exp Bot*. 2005;56(409):1–14.
- Albert H, Dale EC, Lee E, Ow DW. Site-specific integration of DNA into wild-type and mutant lox sites placed in the plant genome. *Plant J*. 1995;7:649–59.
- Srivastava V, Ariza-Nieto M, Wilson AJ. Cre-mediated site-specific gene integration for consistent transgene expression in rice. *Plant Biotech J*. 2004;2:169–79.
- Louwerse JD, van Lier MC, van der Steen DM, de Vlaam CM, Hooykaas PJ, Vergunst AC. Stable recombinase-mediated cassette exchange in *Arabidopsis* using *Agrobacterium tumefaciens*. *Plant Physiol*. 2007;145(4):1282–93.
- Li Z, Xing A, Moon BP, McCardell RP, Mills K, Falco SC. Site-specific integration of transgenes in soybean via recombinase-mediated DNA cassette exchange. *Plant Physiol*. 2009;151:1087–95.
- Nandy S, Srivastava V. Site-specific gene integration in rice genome mediated by the FLP-FRT recombination system. *Plant Biotechnol J*. 2011;9:713–21.
- Gidoni D, Srivastava V, Carmi N. Site-specific excisional recombination strategies for elimination of undesirable transgenes from crop plants. *In Vitro Cell Dev Biol - Plant*. 2008;44:457–67.
- Gilbertson L. Cre-lox recombination: Cre-ative tools for plant biotechnology. *Trends Biotech*. 2003;21:550–5.
- Ow DW. Recombinase-directed plant transformation for the post-genomic era. *Plant Mol Biol*. 2002;48:183–200.
- Schnütgen F, Stewart AF, von Melchner H, Anastassiadis K. Engineering embryonic stem cells with recombinase systems. *Methods Enzymol*. 2006;420:100–36.
- Nanto K, Yamada-Watanabe K, Ebinuma H. *Agrobacterium*-mediated RMCE approach for gene replacement. *Plant Biotech J*. 2005;3:203–14.
- Hou L, Yau YY, Wei J, Han Z, Dong Z, Ow DW. An open-source system for in planta gene stacking by Bxb1 and Cre recombinases. *Mol Plant*. 2014;7(12):1756–65.
- Day CD, Lee E, Kobayashi J, Holappa LD, Albert H, Ow DW. Transgene integration into the same chromosome location can produce alleles that express at a predictable level, or alleles that are differentially silenced. *Genes Dev*. 2000;14:2869–80.
- Chawla R, Ariza-Nieto M, Wilson AJ, Moore SK, Srivastava V. Transgene expression produced by biolistic-mediated, site-specific gene integration is consistently inherited by the subsequent generations. *Plant Biotech J*. 2006;4:209–18.
- Nanto K, Sato K, Katayama Y, Ebinuma H. Expression of a transgene exchanged by the recombinase-mediated cassette exchange (RMCE) method in plants. *Plant Cell Rep*. 2009;28:777–85.
- Vergunst AC, Hooykaas PJ. Cre/lox-mediated site-specific integration of *Agrobacterium* T-DNA in *Arabidopsis thaliana* by transient expression of cre. *Plant Mol Biol*. 1998;38:393–406.
- Nandy S, Srivastava V. Marker-free site-specific gene integration in rice based on the use of two recombination systems. *Plant Biotech J*. 2012;10:904–12.
- Antunes MS, Smith JJ, Jantz D, Medford JI. Targeted DNA excision in *Arabidopsis* by a re-engineered homing endonuclease. *BMC Biotech*. 2012;12:86.
- Fauser F, Roth N, Pacher M, Ilg G, Sánchez-Fernández R, Biesgen C, et al. *In planta* gene targeting. *Proc Natl Acad Sci U S A*. 2012;109:7535–40.
- Petolino JF, Worden A, Curlee K, Connell J, Strange Moynahan TL, Larsen C, et al. Zinc finger nuclease-mediated transgene deletion. *Plant Mol Biol*. 2010;73:617–28.
- Srivastava V, Ow DW. Biolistic mediated site specific integration in rice. *Mol Breed*. 2002;8:345–50.
- Yu AM, McVey M. Synthesis-dependent microhomology-mediated end joining accounts for multiple types of repair junctions. *Nucleic Acids Res*. 2010;38:5706–17.
- Vu GT, Cao HX, Watanabe K, Hensel G, Blattner FR, Kumlhehn J, et al. Repair of Site-Specific DNA Double-Strand Breaks in Barley Occurs via Diverse Pathways Primarily Involving the Sister Chromatid. *Plant Cell*. 2014;26(5):2156–67.
- Akbadak MA, Srivastava V. Improved FLP recombinase, FLPe, efficiently removes marker gene from transgene locus developed by Cre-lox mediated site-specific gene integration in rice. *Mol Biotech*. 2011;49:82–9.
- Nguyen LD, Underwood JL, Nandy S, Akbadak MA, Srivastava V. Strong activity of FLPe recombinase in rice plants does not correlate with the transmission of the recombined locus to the progeny. *Plant Biotech Rep*. 2014;8(6):455–62.
- Perez EE, Wang J, Miller JC, Jouvenot Y, Kim KA, Liu O, et al. Establishment of HIV-1 resistance in CD4+ T cells by genome editing using zinc-finger nucleases. *Nat Biotechnol*. 2008;26(7):808–16.
- Khattri A, Nandy S, Srivastava V. Heat-inducible Cre-lox system for marker excision in transgenic rice. *J Biosci*. 2011;36:37–42.
- Ruiz-Lopez N, Haslam RP, Napier JA, Sayanova O. Successful high-level accumulation of fish oil omega-3 long-chain polyunsaturated fatty acids in a transgenic oilseed crop. *Plant J*. 2014;77:198–208.
- Zhu C, Naqvi S, Breitenbach J, Sandmann G, Christou P, Capell T. Combinatorial genetic transformation generates a library of metabolic phenotypes for the carotenoid pathway in maize. *Proc Natl Acad Sci U S A*. 2009;105:18232–7.

37. Ainley WM, Sastry-Dent L, Welter ME, Murray MG, Zeitler B, Amora R, et al. Trait stacking via targeted genome editing. *Plant Biotech J*. 2013;11:1126–34.
38. D'Halluin K, Vanderstraeten C, Van Hulle J, Rosolowska J, Van Den Brande I, Pennewaert A, et al. Targeted molecular trait stacking in cotton through targeted double-strand break induction. *Plant Biotech J*. 2013;11:933–41.
39. de Pater S, Pinas JE, Hooykaas PJ, van der Zaal BJ. ZFN-mediated gene targeting of the Arabidopsis protoporphyrinogen oxidase gene through Agrobacterium-mediated floral dip transformation. *Plant Biotech J*. 2013;11:510–5.
40. Shukla VK, Doyon Y, Miller JC, DeKolver RC, Moehle EA, Worden SE, et al. Precise genome modification in the crop species *Zea mays* using zinc-finger nucleases. *Nature*. 2009;209(459):437–41.
41. Townsend JA, Wright DA, Winfrey RJ, Fu F, Maeder ML, Joung JK, et al. High-frequency modification of plant genes using engineered zinc-finger nucleases. *Nature*. 2009;459:442–5.
42. Kumar S, Al Abed D, Worden A, Novak S, Wu H, Ausmus C, et al. Modular gene targeting system for sequential transgene stacking in plants. *J Biotechnol*. 2015;207:12–20.
43. Voytas DF. Plant genome engineering with sequence-specific nucleases. *Annu Rev Plant Biol*. 2013;64:327–50.
44. Petek LM, Russell DW, Miller DG. Frequent endonuclease cleavage at off-target locations in vivo. *Mol Ther*. 2010;18(5):983–6.
45. Zhang W, Subbarao S, Addae P, Shen A, Armstrong C, Peschke V, et al. Cre/lox-mediated marker gene excision in transgenic maize (*Zea mays* L.) plants. *Theor Appl Genet*. 2003;107(7):1157–68.
46. Yau YY, Stewart Jr CN. Less is more: strategies to remove marker genes from transgenic plants. *BMC Biotechnol*. 2013;13:36.
47. Srivastava V, Anderson OD, Ow DW. Single-copy transgenic wheat generated through the resolution of complex integration patterns. *Proc Natl Acad Sci U S A*. 1999;96:11117–21.
48. Bala A, Roy A, Das A, Chakraborti D, Das S. Development of selectable marker free, insect resistant, transgenic mustard (*Brassica juncea*) plants using Cre/lox mediated recombination. *BMC Biotechnol*. 2013;13:88.
49. Lloyd AH, Wang D, Timmis JN. Single molecule PCR reveals similar patterns of non-homologous DSB repair in tobacco and Arabidopsis. *PLoS ONE*. 2012;7(2):e32255.
50. Kirik A, Salomon S, Puchta H. Species-specific double-strand break repair and genome evolution in plants. *EMBO J*. 2000;19(20):5562–6.
51. Li Z, Moon BP, Xing A, Liu ZB, McCardell RP, Damude HG, et al. Stacking multiple transgenes at a selected genomic site via repeated recombination-mediated DNA cassette exchanges. *Plant Physiol*. 2010;154:622–31.
52. Turan S, Kuehle J, Schambach A, Baum C, Bode J. Multiplexing RMCE: versatile extensions of the FLP-recombinase-mediated cassette-exchange technology. *J Mol Biol*. 2010;2010(402):52–69.
53. Ghosh P, Kim AI, Hatfull GF. The orientation of Mycobacteriophage Bxb1 integration is solely dependent on the central dinucleotide of attP and attB. *Mol Cell*. 2003;2003(12):1101–11.
54. Christensen AH, Sharrock RA, Quail PH. Maize polyubiquitin genes: structure, thermal perturbation of expression and transcript splicing, and promoter activity following transfer to protoplasts by electroporation. *Plant Mol Biol*. 1992;18:675–89.
55. Senecoff JF, Rossmeissl PJ, Cox MM. DNA recognition by the FLP-recombinase of the yeast 2  $\mu$  plasmid. A mutational analysis of the FLP binding site. *J Mol Biol*. 1988;201:405–21.
56. Buchholz F, Angrand PO, Stewart AF. Improved properties of FLP recombinase evolved by cycling mutagenesis. *Nat Biotechnol*. 1998;16:657–62.
57. Czarnecka E, Ingersoll JC, Gurley WB. AT-rich promoter elements of soybean heat shock gene Gmhsp17.5E bind two distinct sets of nuclear proteins in vitro. *Plant Mol Biol*. 1992;19:985–1000.
58. Hlubek A, Biesgen C, and Höffken H-W (2011) Chimeric endonucleases and uses therefore. Patent WO 2011/064750
59. Nishimura A, Aichi I, Matsuoka M. A protocol for Agrobacterium mediated transformation in rice. *Nat Protoc*. 2006;1:2796–802.

**Submit your next manuscript to BioMed Central and take full advantage of:**

- Convenient online submission
- Thorough peer review
- No space constraints or color figure charges
- Immediate publication on acceptance
- Inclusion in PubMed, CAS, Scopus and Google Scholar
- Research which is freely available for redistribution

Submit your manuscript at  
[www.biomedcentral.com/submit](http://www.biomedcentral.com/submit)

