

## RESEARCH

## Open Access

# Distribution of abnormal potentials in chronic myocardial infarction using a real time magnetic resonance guided electrophysiology system

Samuel O Oduneye<sup>1\*</sup>, Mihaela Pop<sup>1,2</sup>, Mohammed Shurrab<sup>3</sup>, Labonny Biswas<sup>2</sup>, Venkat Ramanan<sup>2</sup>, Jennifer Barry<sup>2</sup>, Eugene Crystal<sup>3</sup> and Graham A Wright<sup>1,2</sup>

## Abstract

**Background:** Identification of viable slow conduction zones manifested by abnormal local potentials is integral to catheter ablation of ventricular tachycardia (VT) sites. The relationship between contrast patterns in cardiovascular magnetic resonance (CMR) and local electrical mapping is not well characterized. The purpose of this study was to identify regions of isolated, late and fractionated diastolic potentials in sinus rhythm and controlled-paced rhythm in post-infarct animals relative to regions detected by late gadolinium enhancement CMR (LGE-CMR).

**Methods:** Using a real-time MR-guided electrophysiology system, electrogram (EGM) recordings were used to generate endocardial electroanatomical maps in 6 animals. LGE-CMR was also performed and tissue classification (dense infarct, gray zone and healthy myocardium) was then correlated to locations of abnormal potentials.

**Results:** For abnormal potentials in sinus rhythm, relative occurrence was equivalent 24%, 27% and 22% in dense scar, gray zone and healthy tissue respectively ( $p = \text{NS}$ ); in paced rhythm, the relative occurrence of abnormal potentials was found to be different with 30%, 42% and 21% in dense scar, gray zone and healthy myocardium respectively ( $p = 0.001$ ). For location of potentials, in the paced case, the relative frequency of abnormal EGMs was 19.9%, 65.4% and 14.7% in the entry, central pathway and exit respectively ( $p = 0.05$ ), putative regions being defined by activation times.

**Conclusions:** Our data suggests that gray zone quantified by LGE-CMR exhibits abnormal potentials more frequently than in healthy tissue or dense infarct when right ventricular apex pacing is used.

**Keywords:** Cardiovascular magnetic resonance, Electrophysiology, Abnormal potentials, Ventricular tachycardia

## Background

Ventricular tachycardia (VT) associated with chronic myocardial infarction are the leading cause of sudden cardiac death [1]. To guide ablation therapy, conventional electrophysiology (EP) substrate mapping delineates the myocardial infarct area using voltage mapping, then uses pace-mapping to define the VT exit as well as local electrogram (EGM) characteristics to identify areas with slow conduction [2]. In the majority of VT cases arising after the patient has suffered a myocardial infarction, slow conduction regions are part of the re-entry circuit in the arrhythmogenic substrate [1], often detected with the

voltage maps as well. These regions of the re-entrant path have been found to contain diastolic potentials [3]. These abnormal local electrograms (EGMs) originate from the propagation across surviving viable myocardium separated by fibrosis in a zig-zag activation pattern [4,5]. The combined local conduction delays produce abnormal signals with multiple signal components, each representing the nonsynchronous depolarization of the different bundles of the surviving myocardial fibers. These abnormal potentials, recorded during electroanatomical mapping, are classified as fractionated potentials or as isolated/late potentials. Diastolic and fractionated potentials are pathognomonic potentials for VT substrate and their locations are the effective targets for ablative therapy [6].

\* Correspondence: [soduneye@sri.utoronto.ca](mailto:soduneye@sri.utoronto.ca)

<sup>1</sup>Medical Biophysics, University Of Toronto, Toronto, ON, Canada  
Full list of author information is available at the end of the article

Abnormal potentials have been analyzed in several studies. Hsia et al. [1,7] compared the correlation between late potentials and arrhythmogenic substrate of reentrant VT circuits and found that, out of the 133 sites recorded, a higher prevalence of late potentials were recorded near the isthmus (89%) compared to entrance (57%) or exit (20%). Similarly, comparable studies have identified higher prevalence of late potentials at sites classified as central or proximal in the reentry circuit as compared to other sites (exit or outer loop sites) [8,9]. Abnormal potentials were shown not only to correlate with the reentry pathway but also to have direct correspondence to successful ablation targets. When ablation strategies have focused on targeting isolated potentials the results have proven to be effective [4,5,10]. Furthermore, other studies have also indicated that abnormal potentials can be used to identify critical isthmuses with signals recorded during sinus rhythm (SR) [6,11,12], paced-controlled rhythm [6] or both [10,13].

Therefore, we aimed to: 1) identify regions of isolated/late and fractionated potentials in sinus rhythm and controlled-paced rhythm in post-infarct animals; and 2) to characterize the relative prevalence of these abnormal potentials in critical sites and areas labeled as gray zone as quantified by late gadolinium enhancement cardiovascular magnetic resonance (LGE-CMR).

## Methods

### Animal preparation

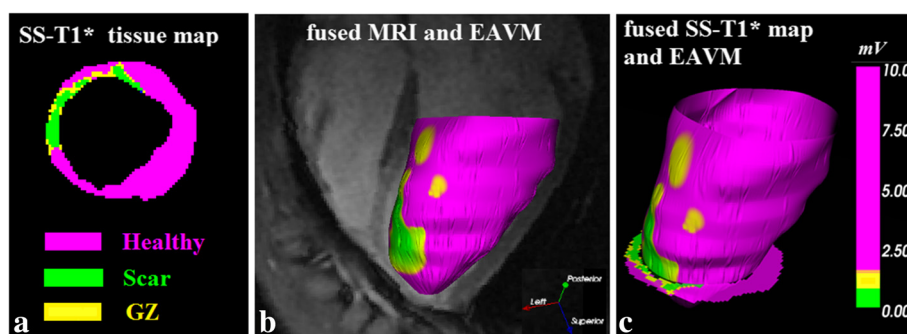
Six pigs weighing an average of 35 kg were used for the study. The chronic infarct model was obtained for each animal by undergoing infarct induction and four weeks recovery; after approximately the four weeks, an MR-guided EP procedure was conducted. Before each procedure, animals were placed under general anesthesia induced with an intramuscular injection of ketamine (30 mg/kg) and atropine (0.05 mg/kg), and maintained by inhalation of 1-5% isoflurane. Also lidocaine (30 ml of 2% lidocaine in 250 ml of saline) and 50 mg/ml amiodarone, were administered during the procedure; anticoagulation with intravenous heparin (70 units/kg) was also administered. Then, the animals were intubated and mechanically ventilated (20–25 breaths/minute). For infarct induction, complete coronary occlusion was achieved distal to the second diagonal branch of the left anterior descending artery (LAD) for 90 minutes or 60 minutes by inflation of a percutaneous balloon dilation catheter (Sprinter Legend Balloon Catheter, Medtronic, Minneapolis, MN), and was followed by reperfusion. The different occlusion times change the extent and heterogeneity of the infarct.

For the EP procedure, incisions of femoral vessels, carotid artery and/or jugular vein were performed and access secured with 9 F introducer sheaths for the purpose

of administering medications and inserting mapping catheters. Finally, ECG leads I, II, and III were monitored throughout the infarct induction procedure as well as the electrophysiology procedure to track animal health. The animal care committee at Sunnybrook Research Institute approved this protocol and all the procedures were conducted following institutional guidelines.

### Imaging protocol and image processing

A 1.5 T GE Signa (GE Healthcare, Milwaukee, USA) with a 5-inch surface coil was used to acquire anatomical scans. The left and right ventricle were fully imaged in long axis and short axis directions, yielding multiple 2D MR images using a respiratory gated sequence. The principal anatomical scans were performed with SSFP-CINE with the following parameters: TE/TR = 1.1/3.6 ms, FA = 45°, BW = 62.5 kHz, NEX = 1, and views per segment (vps) = 12, slice thickness = 5 mm, FOV = 210 mm (phase FOV 0.8 or 0.9), Nx = 224, Ny = 160. This resulted in an approximate in-plane resolution of 0.9 × 1.2 mm. The cine SSFP sequence produced 20 phases over the heart cycle, acquired on average over 10–15 second breath-holds. Following the anatomical scans, we performed LGE imaging using a multi contrast late enhancement (MCLE) sequence recently developed in our lab [14]. MCLE was shown to yield more reliable and reproducible measures of the infarct core and gray zones than conventional techniques. This sequence produces images with multiple contrasts where infarct can be visualized as an area of fast T1\* recovery (T1\* is the apparent T1 relaxation, shorter than the true T1 due to the continuous SSFP readout). The MR scans started 5 minutes after injection of 0.44 mmol/kg of Gd-DTPA (Magnevist, Berlex Inc., Wayne, NJ). The parameters for the MCLE sequence were: TR/TE = 2.7/1.3 ms, readout FA = 45°, BW = ±125 kHz, VPS = 16, FOV = 210 mm, slice thickness = 5 mm, 192 × 160 (phase FOV 0.8 or 0.9) imaging matrix and NEX = 1. An inversion pulse was placed such that the infarct-enhanced images from the continuous SSFP acquisition are acquired during diastole. The resulting images from the MCLE sequence were used to classify the different myocardial tissues states. Six to eight images were utilized from the diastolic cardiac phase to extract the signal recovery rate (1/T1\*) and the steady-state plateau of the recovery curve signal for each pixel within the (left ventricle) LV. After obtaining T1\* and steady-state values for each pixel, we used a fuzzy C-means algorithm to automatically classify each pixel as infarct, healthy myocardium, gray zone, or blood, as previously described in [14]. We segmented the infarct core, gray zone and healthy myocardium in each of our MCLE short-axis images (see Figure 1a). The classification results were processed and imported into our electrophysiology visualization system as an endocardial mesh (Figure 1c).



**Figure 1** Fusion of multi-contrast late enhancement information and voltage signal of electroanatomical map. **(a)** LGE images using the MCLE sequence (or steady-state T1\*) were processed using a fuzzy clustering algorithm to classify each pixel as infarct (green), healthy myocardium (purple), or gray zone (yellow). **(b)** SSFP-derived meshes were overlaid with voltage amplitude information obtained from the MR-Guided endocardial mapping procedure, resulting in an EAVM (color coded as per color bar). **(c)** After the procedure, EP meshes were fused with the MCLE-derived images.

### Real-time MR-guided electrophysiology system

The MR-guided EP apparatus was comprised of 8.5Fr MR-compatible Vision™ catheters, (Imricor Medical Systems, Burnsville, USA) and a prototype Bridge™ EP Recording System (Imricor Medical Systems, Burnsville, MN); we used a 4-electrode catheter with 2 mm spacing between the first two distal electrodes, 3 mm spacing between second and third electrode and 1 mm spacing between third and fourth electrode. Bipolar recordings were made with the distal electrode pair (1 and 2). The catheters were placed in the (right ventricle) RV or LV using active catheter tracking with MR-guidance as reported previously [15]. The catheters were advanced under full MR guidance with a 3D LV shell created from segmentation of SSFP-cine images acquired in the same session, with the animal resting in the same position; this eliminated the need for additional registration or alignment. The LGE images were loaded into the visualization software Vurtigo (vurtigo.ca) to directly identify the navigation targets, (i.e., the infarcted areas) (see Figure 1). At each point of contact, the intracardiac signals and the three-dimensional spatial coordinates were recorded. As detailed in our previous study we calculated spatial error associated with fusion of EAM surface and EP points by measuring the average perpendicular distance between EP points and mesh surface [15].

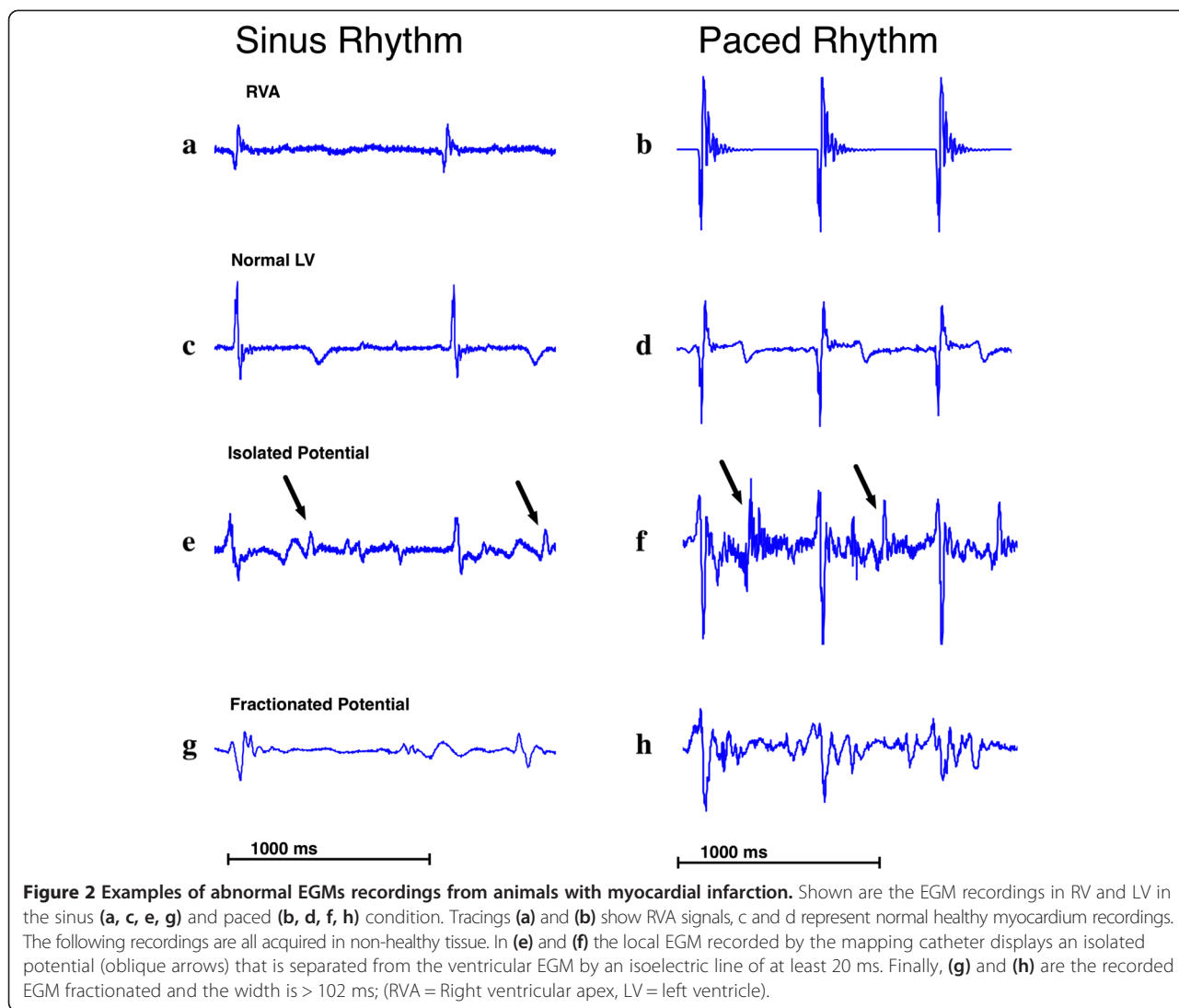
### Electrophysiology procedure

Using the MR-guided EP system, we conducted substrate mapping during sinus rhythm for each animal, right after the imaging acquisition. The EP mapping data was collected in the following sequence: 1) a voltage map was constructed for the endocardial surface of the left ventricle under real-time MR guidance;

2) Right ventricular apex (RVA) electrical stimulation was then performed, with a second catheter advanced into the right ventricle to reduce overlap of action potential signals commonly seen in the porcine model. For

the latter, performing pacing at a rate faster than the animal's normal sinus rhythm (on average 400 msec cycling) and increasing the current until muscle capture was assured, the natural pacemaker was overridden. Abnormal potentials were defined in the following manner: 1) distinct bipolar electrogram recordings inscribed after the end of the RVA reference signal (R-peak), separated from the major initial component of the local ventricular electrogram with an isoelectric interval greater than 20 ms [11] in both sinus and paced cases; and 2) fractionated potentials as multicomponent signals of long duration >133 ms [8] and greater than underlying signal noise (0.1 mV) in both sinus and paced rhythms. The former method is an internationally accepted method from Bogun et al. [11], while the later, as described in the above-reference, is more recent. The remaining EGMs displaying both above-mentioned characteristics were also defined as abnormal. Only endocardial sites with bipolar electrogram recordings acquired during sinus or right ventricular pacing were analyzed for abnormal EGMs (see Figure 2). All EGMs recordings within the LV EP map were analyzed for the presence or absence of abnormal potentials. EGMs with high electrical noise, or poor signal quality reducing accurate assessment of abnormal EGMs were discarded. Signal definition and rejection at this time it was conducted visually and manually, with an experienced observer.

To estimate the degree of local activation time delay in the LV, an isoelectric interval was measured as the timing interval from the onset of the second upstroke in the ventricular electrogram (verified by the corresponding RVA reference signal) to the earliest component of the abnormal EGM. The incidence of abnormal EGMs in different infarct regions as defined by voltage amplitudes and by LGE-CMR was determined. Regions of low voltage potentials were classified as those with voltage amplitude < 1.5 mV, specifically < 0.5 mV for dense scar and 0.5 mV-1.5 mV for gray zone [2]. Critical central



pathways were defined as regions of late (or delayed) activation time in infarct or gray zone tissue and it was hypothesized to support VT, in a similar manner as the isthmus of the reentry circuit.

**Statistical analysis**

Categorical variables were compared using a chi-squared test. The test allowed to detect group differences using frequency (count) data. To determine the statistical significance of the frequency of potentials in for different tissue classifications, the recorded (or observed) potentials and expected abnormal potentials were analyzed; where the expected potentials corresponded to the normalized distribution. To determine the statistical significance of the frequency of potentials in the different presumed locations/regions of the slow conduction path (entry, exit and critical central pathway), we compared observed and expected proportion with a chi-square test

(<http://graphpad.com/quickcalcs/chisquared1/> and <http://www.quantpsy.org/chisq/chisq.htm>). Continuous variables were compared using one-way ANOVA test (<http://danielsoper.com/statcalc3/>). A value of  $p < 0.05$  was considered statistically significant. MATLAB (The Mathworks, Natick, MA) was used for statistical analyses.

**Results**

**Electrophysiology mapping**

In our studies during the electrophysiology mapping, we recorded a total of 3945 good quality EGMs from 6 animals. EGMs were recorded in both SR (2469 points) and paced rhythm (1476 points). During SR the signals recorded resulted in 609 low voltage EGMs and 558 abnormal EGMs; for the paced rhythm, 308 and 360 EGMs were found to be low voltage and abnormal respectively. Also, our analysis focused on the relationship between abnormal potentials and tissue properties as

classified by MCLE. Tissue classification results were processed and imported into Vurtigo as an endocardial mesh. Abnormal potentials recorded during the mapping procedure were assigned to locations on the tissue classification mesh using a closest point algorithm; this process resulted in EGM characteristic to tissue property pairings for various regions.

Out of the 2469 points in SR and 1476 in paced rhythm points, we recorded 758, 147 and 1544 EGMs from MR-defined regions of dense infarct, gray zone and healthy myocardium respectively in the SR case. For the paced case we recorded 378, 55 and 1043 EGMs for MR-defined dense infarct, gray zone and healthy myocardium respectively. Results are summarized in Figure 3. Finally, the average spatial error due to cardiac and respiratory motion of the acquired mapping points was calculated to be  $2.1 \pm 1.1$  mm.

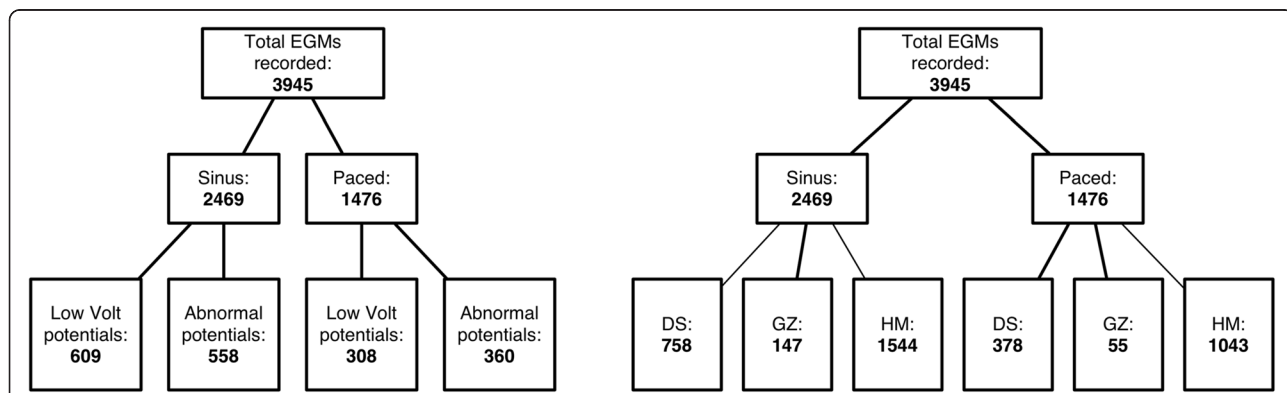
**Distribution of abnormal potential signals in different cardiac rhythms**

Sites classified as dense scar, gray zone, and healthy myocardium by MRI within the low voltage and abnormal potentials groups were further examined. Relative prevalence of abnormal EGMs in a given region was calculated as the ratio of EGMs classified as low voltage or abnormal over the total number of EGMs recorded in scar, gray zone and healthy myocardium, respectively. In general, our analysis determined that low-voltage potentials had a higher relative prevalence in dense scar in sinus, whereas abnormal potentials had a higher relative percentage in gray zone regions in paced rhythm. Specifically, for low-voltage in sinus rhythm, relative prevalence was 28%, 26% and 22% in dense scar, gray zone and healthy myocardium respectively ( $p = 0.01$  among the three groups). For low-voltage during pacing the relative prevalence of low-voltage potentials was 26%, 4% and 20% for dense scar, gray zone and healthy

myocardium respectively ( $p < 0.001$ ). Conversely, for abnormal potentials in sinus rhythm, relative prevalence was equivalent for all EGM measurements in the mapped regions of interest, and calculated to be 24%, 27% and 22% ( $p = 0.3$ ) in dense scar, gray zone and healthy tissue respectively; in the paced rhythm case the relative prevalence of abnormal EGMs was 30%, 42% and 21% ( $p = 0.001$  between each group) in dense scar, gray zone and healthy myocardium respectively. These results are summarized in Table 1. Finally, our results indicate that in paced rhythm gray zone has higher frequency of abnormal potentials with respect to healthy myocardium ( $p < 0.01$ ) and statistically trending towards higher frequency with respect to dense scar ( $p < 0.1$ ).

**Distribution of abnormal potential signals in different locations**

Distributions of abnormal potentials across locations in assumed target regions as a function of rhythm were also analyzed. The target regions of the presumed slow conduction path (entry, critical central pathway and exit, see Figure 4) were inferred from depolarization times of local activation/arrival signals relative to all activation times. Local activation times for recorded points classified as dense infarct and gray zone were subdivided into quartiles for each animal (note, health myocardium was not included): 1) the first quartile of the earliest activation times within MR-determined regions of dense infarct or gray zone were classified as being associated with the entry; 2) 2<sup>nd</sup> and 3<sup>rd</sup> quartile were classified as within the critical central pathway; and 3) latest activation times (4<sup>th</sup> quartile) are considered to be within the exit region. The choice of quartile regions was made to favour repeatability of calculations and analysis. Only relative activation times in the dense infarct and gray zone were considered, to reduce any bias due to the presence of health myocardium or excessive distance



**Figure 3** Distribution of abnormal potential recordings in sinus and paced rhythm for low voltage potentials and abnormal potentials (left); and within scar, gray zone and healthy myocardium regions (right) of the endocardium. Low Volt = low voltage, DS = dense scar, GZ = gray zone, HM = healthy myocardium.

**Table 1 Distribution of abnormal potential EGMS recorded in scar, gray zone and healthy regions**

Animals N = 6	Sinus rhythm				Paced rhythm			
	Dense scar	Gray zone	Healthy myo	p-value	Dense scar	Gray zone	Healthy myo	p-value
Total EGMS recorded	758	147	1544		378	55	1043	
Low voltage potentials	214 (28%)	38 (26%)	337 (22%)	p = 0.01	98 (26%)	2(4%)	208 (20%)	p = 0.01
Abnormal potentials	183 (24%)	39 (27%)	336 (22%)	p = 0.3	113 (30%)	23(42%)	224 (21%)	p = 0.001

Values in parentheses indicate fraction of low voltage or abnormal potentials as a percentage of total EGMS in scar, gray zone or myocardium. EGMS are shown in rhythm and vs. paced rhythm. p-values are calculated as the difference between the tissue groups.

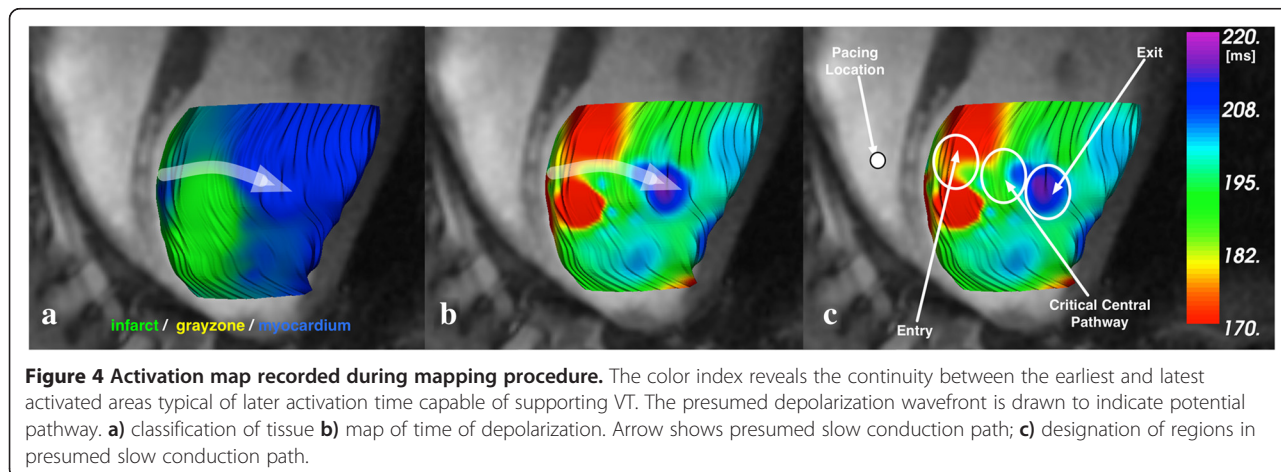
from pacing site (pacing case). Therefore, the distribution of all measured potentials across entry, critical central pathway and exit will be, by definition, 25%-50%-25% respectively. Considering only the abnormal potentials observed in these regions we asked if their spatial distribution was different than that for all potentials. Our results show a significant and relative difference between the sinus rhythm case and paced case. Specifically, our results show that, in the sinus case, there is an unexpectedly high relative fraction at the exit, specifically 21.2%, 42.8%, and 36.0% of the abnormal potentials in the regions were seen in the entry, central pathway, and exit regions respectively; in the paced case, the abnormal EGMS were more likely to be seen in the central pathway region, with distribution of 19.9%, 65.4% and 14.7% in the entry, critical central pathway and exit regions respectively (as shown in Figure 5). Using a comparison of proportion test, we determined that each of these distributions differed from the expected distribution of 25:50:25 in a statistically significant way ( $p < 0.05$ ). The significance of these findings is presented in the next section.

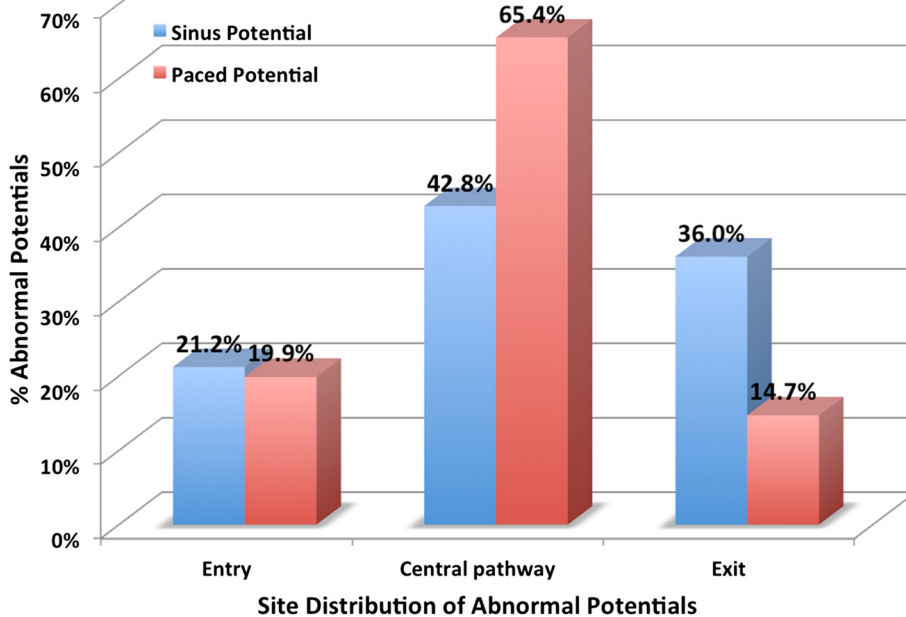
**Discussions**

**Abnormal potential signals distribution**

The main findings of this study are that: (1) abnormal potentials are more prevalent in the MR-defined gray zone and (2) this relationship is more evident during

RVA pacing. CMR determined gray zone has been shown to correlate with all-cause post-MI mortality and with inducibility for VT for patients with myocardial infarct scars; therefore it would be important to characterize the prevalence of abnormal potentials in areas labeled as gray zone as quantified by LGE-CMR. Our data suggest that abnormal potentials are more prevalent in the MR-defined gray zone, particularly during pacing. This is a novel finding, and provides additional insights into the analysis of RVA stimulation; It is believed that overlapping activation fronts may limit the identification of multiple components during sinus rhythm, where overlapping refers to the activation of various parts of the myocardium due to non-uniform activation of the endocardium generated by the Purkinje fibers as well as to beat-to-beat heart rhythm variability in sinus rhythm. This limitation can be mitigated by simplifying the evaluation to one propagation front; specifically, RVA pacing from a known location creates a dominant action potential wavefront that can identify abnormal potentials otherwise not detected [6]. Our results are consistent with this notion as RVA pacing suppresses overlapping signals and reduces the influence of adrenergic and cholinergic nerve fibers present on the swine endocardium. The heterogeneous nature of gray zone with bundles of surviving myocytes responsible for the irregular propagation of the action potential may





**Figure 5 Distributions of abnormal potentials.** Entry, critical central pathway and exit are shown in the figure. The distribution of abnormal potentials is based on Figure 2. The critical central pathway location is associated with the presence of abnormal potentials. Using a comparison of proportion test, we determined that the frequencies between each distribution were statistically significant  $p < 0.05$ .

well explain our observation. Also, our results are in line with previous studies that hypothesized that overlapping of EGMs or a particular orientation of a line of block with respect to the activation front may preclude the identification of multiple components during SR [6]. This limitation can be overcome by changing the activation front, such as during RVA pacing, to identify otherwise undetected abnormal EGMs. This is important because the authors of the previous study also claim that these EGMs could better identify VT-related slow conduction areas relative to low-amplitude electrograms [6]. Further, we noticed that in both sinus and paced rhythm there was a percentage of low volume abnormal potentials in healthy tissue. Based on visual inspection we noticed that such points were recorded recorded in healthy myocardium, which was located adjacent to the infarct region. In addition, a few points of low voltage in healthy myocardium were also acquired very close or touching the valve, while others probably did not have a very good contact with the ventricular.

Our results shows a lower prevalence of low voltage points in gray zone than health myocardium in the paced rhythm case; Although gray zone in that case showed a lower prevalence of low voltage points, the average signal amplitude was lower than in the healthy myocardium. So while the average signal in the healthy myocardium was above 1.5 mV, there were several low voltage points. We also found that, in the paced case, a

higher relative percentage of abnormal signal potentials was associated with sites in the presumed slow central pathway compared to entry or exit, based on activation activation times. These findings are in line with findings of Nakahara *et al.* [13], where a higher concentration of abnormal EGMs (late potentials) was found in the putative isthmus and also with Hsia *et al.* [7], where the majority of these delayed and fractionated endocardial electrogram recordings were found in critical central pathway sites. In this study we did not report nor conduct a rigorous correlation study between low-voltage and MR-defined dense scar, since it was the focus of our previous publication [15].

Abnormal potentials are more associated with the location of the VT isthmus than low amplitude potentials [6,7,11,16]. Locations of VT-related conducting channels have been shown to be only grossly estimated by low peak bipolar voltages ( $<1.5$  mV) measured during SR without tachycardia induction. Also, recently it has been shown that the presence of isolated potentials inside the voltage channel significantly increases the specificity for identifying the clinical VT isthmus [17]. Furthermore, linear radiofrequency ablation lesions designed to transect these channels of slow conduction have been shown to be on average longer in length by several centimeters when the isthmus has not been effectively identified and only voltage maps are known (e.g. in hemodynamically unstable patients) [18]. In contrast,

abnormal EGMs reflecting anisotropic late activation times can identify VT-related slow conduction regions. Specifically, sites with isolated/late potentials and fractionated potentials during sinus/paced rhythm reflect late local activation of bundles of healthy myocytes that enable conduction and become critical components of a reentry circuit. Abnormal potentials acquired during endocardial mapping have been shown to correspond to appropriate ablation targets with greater specificity than simple peak voltage mapping [10,19].

Identifying abnormal potentials becomes especially important in cases where the patient has hemodynamically unstable VT, or non-inducible VT; otherwise, in these patients, electrophysiologists only have the information from the voltage maps, which as noted above, have low specificity for VT substrate identification [2,6]. Point-by-point mapping of the LV is time consuming and leads to prolonged procedure/anesthesia time, and the low specificity of this technique requires additional diagnostic procedures [6]. The point-by-point mapping also has limitations related to catheter-tissue contact and largely unspecified spatial resolution. In our previous study [15] we showed that CMR information used in electrophysiology studies can accurately predict areas of myocardial fibrosis identified with bipolar voltage mapping. We believe that a strategy for identification of sites for mapping and ablation is achievable when using CMR combined with abnormal electrical signal information; this added information is desirable due to its greater specificity compared to peak voltage mapping alone. More specifically, gray zone volume with LGE-CMR has been shown to correlate with all-cause post-MI mortality and with inducibility for ventricular tachycardia (VT) [20,21].

## Conclusions

Our data suggests that gray zone quantified by LGE-CMR has high correspondence to regions with a high proportion of abnormal potentials. This correspondence is higher when right ventricular apex stimulation is employed. Abnormal electrograms are commonly observed in sinus rhythm and paced rhythm from and in close proximity to slow central pathways in other studies. Future investigation into the clinical outcome associated with ablation of VT using gray zone information and signal morphology is warranted

## Abbreviations

LGE-CMR: Late gadolinium enhanced cardiovascular magnetic resonance; LV: Left ventricle; RV: Right ventricle; RVA: Right ventricular apex; VT: Ventricular tachycardia; EGM: Electrogram; EP: Electrophysiology; SR: Sinus rhythm; MCLE: Multi contrast late enhancement.

## Competing interests

Dr. Wright receives research funding from GE Healthcare.

## Authors' contributions

SOO: carried out the experiments including, catheter manipulation, image acquisition, reconstruction, and analysis of data; drafted the manuscript. MP: participated in the image acquisition, helped understanding of the data interpretation and critically reviewed the manuscript. MS: helped understanding and interpretation of electrogram recordings. LB: managed all real-time processing and image-guided aspects of the in-vivo studies. VR: participated in the image acquisition. JB: prepared all the animals, and monitored all vitals during studies and performed catheter manipulation. EC: helped understanding and interpretation of electrogram recordings, critically reviewed the manuscript. GAW: guided study design, analysis and interpretation of data, and critically reviewed the manuscript. All authors have read and approved the final manuscript.

## Acknowledgements

Research support provided by GE Healthcare and Imricor Medical Systems. Grant support provided by Canadian Institutes of Health Research (MOP 93531), the Ontario Research Fund, and the Federal Development Agency of Canada.

## Author details

<sup>1</sup>Medical Biophysics, University Of Toronto, Toronto, ON, Canada. <sup>2</sup>Imaging Research, Sunnybrook Research Institute, Toronto, ON, Canada. <sup>3</sup>Arrhythmia Services, Sunnybrook Health Science Centre, Toronto, ON, Canada.

Received: 22 July 2014 Accepted: 13 March 2015

Published online: 11 April 2015

## References

1. Stevenson WG, Soejima K. Catheter ablation for ventricular tachycardia. *Circulation*. 2007;115:2750–60.
2. Aliot EM, Stevenson WG, Almendral-Garrote JM, Bogun F, Calkins CH, Delacretaz E, et al. EHRA/HRS Expert Consensus on Catheter Ablation of Ventricular Arrhythmias. *Heart Rhythm*. 2009;6:886–933.
3. Stevenson WG, Weiss JN, Wiener I, Rivitz SM, Nademanee K, Klitzner T, et al. Fractionated endocardial electrograms are associated with slow conduction in humans: evidence from pace-mapping. *J Am Coll Cardiol*. 1989;13:369–76.
4. De Bakker J, Van Capelle F, Janse M, Tasseron S, Vermeulen J, De Jonge N, et al. Slow conduction in the infarcted human heart. "Zigzag" course of activation. *Circulation*. 1993;88:915.
5. de Bakker JMT, Wittkampf FHM. The pathophysiologic basis of fractionated and complex electrograms and the impact of recording techniques on their detection and interpretation. *Circ Arrhythm Electrophysiol*. 2010;3:204–13.
6. Arenal A, Glez-Torrecilla E, Ortiz M, Villacastin J, Fdez-Portales J, Sousa E, et al. Ablation of electrograms with an isolated, delayed component as treatment of unmappable monomorphic ventricular tachycardias in patients with structural heart disease. *J Am Coll Cardiol*. 2003;41:81–92.
7. Hsia HH, Lin DD, Sauer WH, Callans DJ, Marchlinski FE. Relationship of late potentials to the ventricular tachycardia circuit defined by entrainment. *J Interv Card Electrophysiol: Int J Arrhythmia Pacing*. 2009;26:21–9.
8. Bogun F, Krishnan S, Siddiqui M, Good E, Marine JE, Schuger C, et al. Electrogram characteristics in postinfarction ventricular tachycardia: effect of infarct age. *J Am Coll Cardiol*. 2005;46:667–74.
9. Harada T, Stevenson WG, Kocovic DZ, Friedman PL. Catheter ablation of ventricular tachycardia after myocardial infarction: relation of endocardial sinus rhythm late potentials to the reentry circuit. *J Am Coll Cardiol*. 1997;30:1015–23.
10. Bogun FF, Bender BB, Li Y-GY, Groenefeld GG, Hohnloser SHS, Pelosi FF, et al. Analysis during sinus rhythm of critical sites in reentry circuits of postinfarction ventricular tachycardia. *J Interv Card Electrophysiol: Int J Arrhythmia Pacing*. 2002;7:95–103.
11. Bogun F, Good E, Reich S, Elmouchi D, Igic P, Lemola K, et al. Isolated potentials during sinus rhythm and pace-mapping within scars as guides for ablation of post-infarction ventricular tachycardia. *J Am Coll Cardiol*. 2006;47:2013–9.
12. Bruckhorst CB, Stevenson WG, Jackman WM, Kuck K-H, Soejima K, Nakagawa H, et al. Ventricular mapping during atrial and ventricular pacing. Relationship of multipotential electrograms to ventricular tachycardia reentry circuits after myocardial infarction. *Eur Heart J*. 2002;23:8–8.
13. Nakahara SS, Tung RR, Ramirez RJR, Gima JJ, Wiener II, Mahajan AA, et al. Distribution of late potentials within infarct scars assessed by ultra high-density mapping. *Heart Rhythm*. 2010;7:8–8.



14. Detsky JS, Paul G, Dick AJ, Wright GA. Reproducible classification of infarct heterogeneity using fuzzy clustering on multicontrast delayed enhancement magnetic resonance images. *IEEE Trans Med Imaging*. 2009;28:1606–14.
15. Oduneye SO, Pop M, Biswas L, Flor R, Ghate S, Ramanan V, et al. Post-Infarction Ventricular Tachycardia Substrate Characterization: A Comparison Between Late Enhancement Magnetic Resonance Imaging And Voltage Mapping Using a MR-Guided Electrophysiology System. *Biomed Eng, IEEE Transactions on*. 2013;1:2442–9.
16. Nakahara S, Vaseghi M, Ramirez RJ, Fonseca CG, Lai CK, Finn JP, et al. Characterization of myocardial scars: electrophysiological imaging correlates in a porcine infarct model. *Heart Rhythm : Off J Heart Rhythm Soc*. 2011;8:1060–7.
17. Mountantonakis SE, Park RE, Frankel DS, Hutchinson MD, Dixit S, Cooper J, et al. Relationship between voltage map “channels” and the location of critical isthmus sites in patients with post-infarction cardiomyopathy and ventricular tachycardia. *J Am Coll Cardiol*. 2013;61:2088–95.
18. Soejima K, Suzuki M, Maisel WH, Brunckhorst CB, Delacretaz E, Blier L, et al. Catheter ablation in patients with multiple and unstable ventricular tachycardias after myocardial infarction: short ablation lines guided by reentry circuit isthmuses and sinus rhythm mapping. *Circulation*. 2001;104:664–9.
19. Jaïs PP, Maury PP, Khairy PP, Sacher FF, Nault II, Komatsu YY, et al. Elimination of local abnormal ventricular activities: a new end point for substrate modification in patients with scar-related ventricular tachycardia. *Circulation*. 2012;125:2184–96.
20. Yan AT, Shayne AJ, Brown KA, Gupta SN, Chan CW, Luu TM, et al. Characterization of the peri-infarct zone by contrast-enhanced cardiac magnetic resonance imaging is a powerful predictor of post-myocardial infarction mortality. *Circulation*. 2006;114:32–9.
21. Schmidt A, Azevedo CF, Cheng A, Gupta SN, Bluemke DA, Foo TK, et al. Infarct tissue heterogeneity by magnetic resonance imaging identifies enhanced cardiac arrhythmia susceptibility in patients with left ventricular dysfunction. *Circulation*. 2007;115:2006–14.

**Submit your next manuscript to BioMed Central and take full advantage of:**

- Convenient online submission
- Thorough peer review
- No space constraints or color figure charges
- Immediate publication on acceptance
- Inclusion in PubMed, CAS, Scopus and Google Scholar
- Research which is freely available for redistribution

Submit your manuscript at  
[www.biomedcentral.com/submit](http://www.biomedcentral.com/submit)

