

Witten index in supersymmetric 3d theories revisited

A.V. Smilga

*SUBATECH, Université de Nantes,
4 rue Alfred Kastler, BP 20722, Nantes 44307, France¹*

E-mail: smilga@subatech.in2p3.fr

ABSTRACT: We have performed a direct calculation of Witten index I in $\mathcal{N} = 1, 2, 3$ supersymmetric Yang-Mills Chern-Simons (SYMCS) 3d theories. We do it in the framework of Born-Oppenheimer (BO) approach by putting the system into a small spatial box and studying the effective Hamiltonian depending on the zero field harmonics. At the tree level, our results coincide with the results of ref. [1], but there is a difference in the way the loop effects are implemented. In Witten's approach, one has only take into account the fermion loops, which bring about a negative shift of the (chosen positive at the tree level) Chern-Simons coupling k . As a result, Witten index vanishes and supersymmetry is broken at small k . In the effective BO Hamiltonian framework, fermion, gluon and ghost loops contribute on an equal footing. Fermion loop contribution to the effective Hamiltonian can be evaluated exactly, and their effect amounts to the negative shift $k \rightarrow k - c_V/2$ for $\mathcal{N} = 1$ and $k \rightarrow k - c_V$ for $\mathcal{N} = 2, 3$ in the tree-level formulae for the index. In our approach, with rather natural assumptions on the structure of bosonic corrections, the shift $k \rightarrow k + c_V$ brought about by the gluon loops also affects the index. Since the total shift of k is positive or zero, Witten index appears to be nonzero at nonzero k , and supersymmetry is not broken.

We discuss possible reasons for such disagreement

KEYWORDS: Supersymmetric gauge theory, Field Theories in Lower Dimensions

ARXIV EPRINT: [0910.0803](https://arxiv.org/abs/0910.0803)

¹On leave of absence from ITEP, Moscow, Russia.

Contents

1	Introduction	1
2	Tree level	4
2.1	Effective Hamiltonian	5
2.2	Counting Weyl invariant vacuum functions	7
3	Loop corrections	14
3.1	Infinite volume	14
3.2	Finite volume	18
3.3	Higher \mathcal{N}	20
4	Discussion	22
A	Magnetic flux induced by loops.	28

1 Introduction

It is known since [2, 3] that $\mathcal{N} = 4$ supersymmetric Yang-Mills theory in 4 dimensions is dual to supersymmetric string theory (10d supergravity in the leading strong coupling approximation) on $AdS_5 \times S^5$ background. In other words, many nontrivial results for $\mathcal{N} = 4$ SYM theory for large N_c and large 't Hooft coupling can be obtained by string theory methods. Recently, a new interesting duality has been established. It relates certain 3d supersymmetric gauge theories, involving the Chern-Simons terms and a particular set of matter fields and enjoying $\mathcal{N} = 8$ or $\mathcal{N} = 6$ supersymmetry, to string theories on $AdS_4 \times S^7$ or $AdS_4 \times \mathbb{CP}^3$ backgrounds, respectively [4, 5]. This means that, by duality, one can derive many nontrivial results for these 3d theories.

The theories in question are not so simple, and we do not understand their dynamics as well as we do it for 4d theories. In our opinion, it makes sense to study it in as much details as possible by *purely* field theory methods in order to be able to confront the results thus obtained with the results following from string-gauge duality. A wish to develop tools that would eventually allow us to perform such a comparison and to test the duality conjecture once again was the main motivation behind the present study.

As was mentioned, the 3d theories, for which duality was established, are complicated. Thus, we have decided to study first the simplest $\mathcal{N} = 1$ SYMCS theory and, in particular, its vacuum dynamics. This question was addressed previously in ref. [1]. Witten calculated the index (the difference of the numbers of bosonic and fermionic vacuum states) for this

theory. His result for the theory with $SU(N)$ gauge group at the level $k = \kappa/(4\pi)$ is

$$I(k, N) = \frac{1}{(N-1)!} \prod_{j=-\frac{N}{2}+1}^{\frac{N}{2}-1} (k-j). \tag{1.1}$$

This is zero at $|k| < N/2$. For $|k| \geq N/2$, it can be presented as

$$I(k, N) = (-1)^{N-1} \binom{|k| + N/2 - 1}{N-1}. \tag{1.2}$$

The way this result was derived was not direct, however. That is why we have tried to evaluate the index anew using more direct and clear physical reasoning. We use the same method as Witten successfully applied in [6] for $4d$ supersymmetric gauge theories: put the system in a small spatial box and impose periodic boundary conditions on all fields. If the size of the box is made small enough, most of the variables in the field Hamiltonian become *fast* with large characteristic excitation energies. One can integrate them over and study the dynamics of the effective BO Hamiltonian that depends only on few *slow* variables (zero Fourier modes of gauge fields belonging to the Cartan subalgebra and their superpartners).

However, it turns out that carrying out this program for $3d$ SYMCS theories is a more difficult task than for $4d$ gauge theories. It might even seem that it *fails* in the $3d$ case because it is not sufficient to restrict oneself here with the tree-level effective Hamiltonian. Loop corrections are important and they change essentially the value of the index. At the one-loop level, these corrections can be determined, however, and one can conjecture that higher-loop effects do not further change the result. This conjecture is not quite proven by now, but, following Witten, we find it plausible (the arguments in its favor will be discussed later) and adopt it.

As we will see, the index of the effective finite volume BO Hamiltonian depends on the r -th Chern class of a certain Abelian gauge field on the moduli space of flat connections, with r being the rank of the group. In the case of $SU(2)$, it is just the magnetic flux on the dual torus. There are one-loop contributions to this (generalized) flux, both due to fermion loops and due to gluon loops. These corrections are associated with the renormalization of the Chern-Simons coefficient k in the infinite volume theory. Thus, the index can be evaluated in two steps.

- At the first step, one evaluates the index for the tree-level effective BO Hamiltonian. We have performed it by another method than Witten and confirmed his result,

$$I^{\text{tree}}(k, N) = \binom{k + N - 1}{N - 1} \tag{1.3}$$

(This is for the $SU(N)$ gauge group and positive k).

- At the second step, one takes into account loop effects, which boil down (we will argue that later) to 1-loop renormalization of k due to both fermions and bosons,

$$k_{\text{ren}} = k - \frac{c_V}{2}(\text{fermions}) + c_V(\text{bosons}) = k + \frac{c_V}{2}, \tag{1.4}$$

where c_V is the adjoint Kasimir eigenvalue. [For $SU(N)$, $c_V = N$. For $Sp(2r)$, $c_V = r + 1$. Another name for c_V is the dual Coxeter number h .] Substituting (1.4) in (1.3), we obtain [SU(N), positive k]

$$I(k, N) = \binom{k + 3N/2 - 1}{N - 1}, \tag{1.5}$$

Note that one would obtain Witten’s result (1.1) by doing the same, but leaving only the contribution of the fermionic loops in (1.4). The fact that gluon loops contribute to the shift of k is firmly established [7, 8]. It is less clear, however, whether such boson-induced shift of k is directly translated into the shift of index. In Witten’s approach, it does not. In our finite volume approach, a direct and *quite* honest evaluation of the gluon contribution to the effective BO Hamiltonian is, technically, a more complicated problem than for the fermion contribution (the latter can be evaluated exactly), which is still to be solved. But under very natural assumptions, the boson contribution has the same structure as the fermion one. The result (1.5) is obtained under *this* assumption.

The difference between (1.5) and (1.1) is essential. The product (1.1) vanishes at $k < N/2$, which suggests spontaneous breaking of supersymmetry. But the expression (1.5) does not display such feature meaning that supersymmetry is not broken. Neither is it broken in $\mathcal{N} = 2, 3$ theories, where fermion loop and gluon loop effects in the renormalization of k cancel out (scalar loops contribute to renormalization of g^2 , but not to renormalization of κ), and the index is given by the tree level expression (1.3). We will discuss this controversy in more details in the last section.

In the next section, we fix notations and calculate the index at the tree level. The index of the original theory is evaluated as the index of the effective SQM Hamiltonian, where one should impose the additional constraint of *Weyl invariance* of wave functions (this is a corollary of gauge invariance of wave functions in the full theory). Before this restriction is imposed, one finds Nk^{N-1} vacuum states for the $SU(N)$ gauge group. The wave functions of all these states can be explicitly determined: they represent generalized theta functions. Not all these functions are invariant under Weyl transformations, however, the total number of Weyl-invariant functions being given by the expression (1.3).

We also calculate the index for the symplectic gauge groups $Sp(2r)$ and for G_2 . For symplectic groups, the calculation is even more transparent than for unitary groups. The (tree level) result is

$$I[Sp(2r)] = \binom{k + r}{r}. \tag{1.6}$$

The result for G_2 is

$$I_{G_2}^{\text{tree}}(k) = \left\{ \begin{array}{ll} \frac{(|k|+2)^2}{4} & \text{for even } k \\ \frac{(|k|+1)(|k|+3)}{4} & \text{for odd } k \end{array} \right\}. \tag{1.7}$$

In section 3 we discuss one-loop corrections. We show that they amount to shifting k , as dictated by (1.4). We discuss also the $\mathcal{N} = 2, 3$ SYMCS 3d theories including extra

adjoint Majorana fermions and extra adjoint real scalars, and show that the index there is just given by eqs. (1.3), (1.6) with unshifted k .

Section 4 is devoted to discussions. We spell out again the reasoning leading to the result (1.5) and confront it with Witten's reasoning. In addition, we address the unclear by now question of what might be wrong with the string-inspired arguments of ref. [9], which favor the result (1.1) rather than (1.5).

2 Tree level

The action of $\mathcal{N} = 1$ SYMCS theory is¹

$$\mathcal{L} = \frac{1}{g^2} \text{Tr} \int d^3x \left\{ -\frac{1}{2} F_{\mu\nu}^2 + i \bar{\lambda} \not{D} \lambda \right\} + \kappa \text{Tr} \int d^3x \left\{ \epsilon^{\mu\nu\rho} \left(A_\mu \partial_\nu A_\rho - \frac{2i}{3} A_\mu A_\nu A_\rho \right) - \bar{\lambda} \lambda \right\} \quad (2.1)$$

with the conventions $\epsilon^{012} = 1$, $D_\mu \mathcal{O} = \partial_\mu \mathcal{O} - i[A_\mu, \mathcal{O}]$; λ_α is a 2-component Majorana 3d spinor belonging to the adjoint representation of the gauge group. We choose

$$\gamma^0 = \sigma^2, \quad \gamma^1 = i\sigma^1, \quad \gamma^2 = i\sigma^3. \quad (2.2)$$

This is a 3d theory and the coupling constant g^2 carries the dimension of mass. The physical boson and fermion degrees of freedom in this theory are massive,

$$m = \kappa g^2. \quad (2.3)$$

In three dimensions, the nonzero mass brings about parity breaking.

The parameter κ is dimensionless. It cannot be an arbitrary number, however. The functional integral should be invariant with respect to *large* gauge transformations that change the Chern-Simons number of the gauge field configuration,

$$N_{CS} = \frac{1}{8\pi^2} \epsilon^{\mu\nu\rho} \text{Tr} \int d^3x \left(A_\mu \partial_\nu A_\rho - \frac{2i}{3} A_\mu A_\nu A_\rho \right) \quad (2.4)$$

by an integer. The requirement for e^{iS} to be invariant under such transformation leads to the quantization condition

$$\kappa = \frac{k}{4\pi}. \quad (2.5)$$

with integer k . Two reservations are in order, however. First, we consistently assume in this paper that the field theory (2.1) is regularized in the infrared by putting it on a spatial torus with *periodic* boundary conditions. If the so called *twisted* boundary conditions were imposed [11–13], Chern-Simons number could change by an integer multiple of $1/N$, in which case k would be quantized to be an integer multiple of N [1]. Second, we have not taken into account loop effects yet. We shall learn in section 3 that the loops may in some cases modify the quantization condition such that k must be half-integer.

The parameter k is called the *level* of the theory.

¹See e.g. [10] for a nice review.

2.1 Effective Hamiltonian

We put the system in a spatial box of size L and impose periodic boundary conditions on the fields. The Witten index does not depend on the size of the box and we are allowed to consider the limit

$$mL \ll 1 \quad \text{and hence} \quad g^2 L \ll 1. \quad (2.6)$$

[The second inequality follows from the first one, from the definition (2.3) and from the quantization condition (2.5)]. We expand the dynamic field variables in the Fourier series.

$$\begin{aligned} A_j(\mathbf{x}) &= \sum_{\mathbf{n}} A_j^{(\mathbf{n})} e^{2\pi i \mathbf{x} \mathbf{n} / L} & (j = 1, 2), \\ \lambda_\alpha(\mathbf{x}) &= \sum_{\mathbf{n}} \lambda_\alpha^{(\mathbf{n})} e^{2\pi i \mathbf{x} \mathbf{n} / L} \end{aligned} \quad (2.7)$$

with integer \mathbf{n} . When the condition (2.6) is satisfied, the zero Fourier components $A_j^{(0)}$ and $\lambda_\alpha^{(0)}$ belonging to the Cartan subalgebra of the full Lee algebra play a special role: the characteristic excitation energies associated with these degrees of freedom are of order $E^{(0)} \sim g^2$, which is much less than the characteristic excitation energy $E^{\text{higher modes}} \sim 1/L$ associated with higher Fourier harmonics and much less than the characteristic energy associated with non-Abelian components of the vector potential $E^{\text{non-Ab}} \sim (g/L)^{2/3}$. We can thus integrate over the fast variables $A_j^{(\mathbf{n} \neq 0)}$, etc. and build up the effective BO Hamiltonian (and the corresponding Lagrangian) depending only on the slow variables $A_j^{(0) \text{ Cartan}}$ and $\lambda_\alpha^{(0) \text{ Cartan}}$. The situation is exactly the same as for $4d$ theories [6].

In the tree approximation, the effective Lagrangian is obtained by a simple truncation of all fast modes in (2.1). Proceeding in a similar way for $4d$ theories, we would obtain the Lagrangian/Hamiltonian describing free motion on $T \times T \times T$, with T representing the maximal torus of the group [6]. In the $3d$ case, the situation is more complicated.

Consider first the simplest $SU(2)$ case. There are two slow bosonic variables

$$C_j \equiv A_j^{(0)3} \quad (2.8)$$

and their superpartners $\psi_\alpha \equiv \lambda_\alpha^{(0)3}$. The truncated Lagrangian is

$$\mathcal{L} = \frac{L^2}{2g^2} \dot{C}_j^2 - \frac{\kappa L^2}{2} \epsilon_{jk} C_j \dot{C}_k + \frac{iL^2}{2g^2} \psi_\alpha \dot{\psi}_\alpha + \frac{i\kappa L^2}{2} \epsilon_{\alpha\beta} \psi_\alpha \psi_\beta \quad (2.9)$$

To find the corresponding Hamiltonian, it is convenient to introduce $\psi_\pm = \psi_1 \pm i\psi_2$. Then the fermion part of the Lagrangian is represented as

$$\mathcal{L}_f = \frac{iL^2}{2g^2} \psi_+ \dot{\psi}_- + \frac{\kappa L^2}{2} \psi_- \psi_+ . \quad (2.10)$$

We see that the only fermion dynamic variable is $\psi_- \equiv \psi$. Note that it is transformed as

$$\psi \rightarrow e^{i\theta/2} \psi \quad (2.11)$$

under spatial plane rotations. The canonical momentum is $\pi_\psi = iL^2\psi_+/(2g^2)$. After quantization, it goes over to $-i\partial/\partial\psi \equiv -i\bar{\psi}$. Ordering the product $\bar{\psi}\psi$ in a proper (Weyl) way and introducing also bosonic canonical momenta P_j , we derive the quantum Hamiltonian

$$H = \frac{g^2}{2L^2} \left(P_j - \frac{\kappa L^2}{2} \epsilon_{jk} C_k \right)^2 + \frac{\kappa g^2}{2} (\psi\bar{\psi} - \bar{\psi}\psi) . \quad (2.12)$$

It describes the motion in the presence of a uniform magnetic field $B = \kappa L^2$ on the dual 2-dimensional torus $C_{j=1,2} \in (0, 4\pi/L)$. The motion is finite because all the points $C_j + 4\pi n_j/L$ with integer n_j are gauge-equivalent.

The motion of electron in a uniform magnetic field is the first and the simplest supersymmetric quantum problem ever considered [14]. The bosonic and fermionic sectors of the Hamiltonian (2.12) correspond in the usual approach to spin-up and spin-down electrons. The index of this Hamiltonian $I = \text{Tr}\{(-1)^F e^{-\beta H}\}$ can be calculated as a functional integral, which is reduced for small β (semiclassical limit) to an ordinary phase space integral [15].²

$$I = \int \prod_{j=1,2} \frac{dP_j dC_j}{2\pi} d\bar{\psi} d\psi e^{-\beta H} = \frac{1}{2\pi} \int \mathcal{B}(\mathbf{C}) d\mathbf{C} . \quad (2.13)$$

When the motion extends over the whole plane, the index is infinite, indicating the infinite ground state degeneracy. When the motion is finite, the number of vacuum states is finite, being proportional to the total magnetic flux. In our case, $\mathcal{B} = \kappa L^2$ and

$$I = \frac{\kappa L^2}{2\pi} \left(\frac{4\pi}{L} \right)^2 = 8\pi\kappa = 2k . \quad (2.14)$$

It is not difficult to generalize this analysis to other gauge groups. In general, we have $2r$ slow bosonic variables C_{ja} and their superpartners ψ_a . The index $a = 1, \dots, r$ labels the generators of the Cartan subalgebra with the usual convention $\text{Tr}\{t^a t^b\} = \delta^{ab}/2$. The effective Hamiltonian belongs to the class of supersymmetric Hamiltonians

$$H = \frac{g^2}{L^2} \left[\frac{(P_{ja} + \mathcal{A}_{ja})^2}{2} + \frac{1}{2} \mathcal{B}_{ab} (\psi_a \bar{\psi}_b - \bar{\psi}_b \psi_a) \right] , \quad (2.15)$$

where $\mathcal{B}_{ab} = \epsilon_{jk} \partial_{aj} \mathcal{A}_{bk}$, describing a generalized multidimensional Landau-Dubrovin-Krichever-Novikov problem. For the tree-level Hamiltonian that corresponds to the truncated Lagrangian of eq. (2.1),

$$\begin{aligned} \mathcal{A}_{aj} &= -\frac{\kappa L^2}{2} \epsilon_{jk} C_{ak} , \\ \mathcal{B}_{ab} &= \kappa L^2 \delta_{ab} . \end{aligned} \quad (2.16)$$

By the same token as in the SU(2) case, the motion is finite and extends for each \mathbf{C} over a parallelepiped formed by simple coroots of the group (alias, the maximal torus T of the group). For SU(3), this is a rhombus represented in figure 1 (do not pay attention for a while to the dashed lines bounding the Weyl alcove, neither to special fundamental coweight points marked by the box and triangle).

²In the Hamiltonian (2.12), the magnetic field is constant, but, in view of future applications, we write the index for a generalized Hamiltonian describing the motion in a non-uniform magnetic field [16, 17].

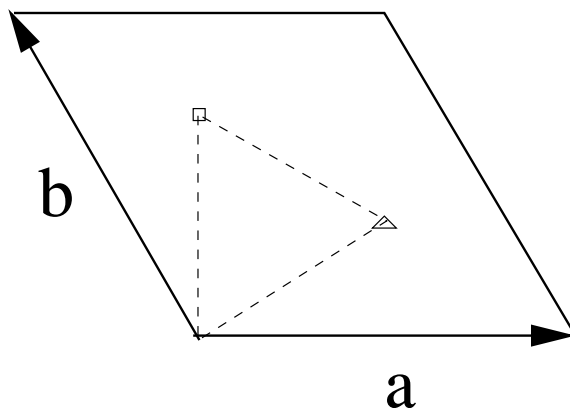


Figure 1. Maximal torus and Weyl alcove for $SU(3)$. \mathbf{a} and \mathbf{b} are simple coroots. The points \square and \triangle are fundamental coweights.

The index of the effective Hamiltonian is evaluated semiclassically as a *generalized* magnetic flux (this is nothing but that the r -th Chern class of the $U(1)$ bundle over $T \times T$ with the connection \mathcal{A}_{ja}),

$$I = \frac{1}{(2\pi)^r} \int_{T \times T} \prod_{ja} dC_{ja} \det \|\mathcal{B}_{ab}\| . \tag{2.17}$$

In the case of $SU(N)$,

$$I^{SU(N)} = Nk^{N-1} . \tag{2.18}$$

2.2 Counting Weyl invariant vacuum functions

The index of the effective Hamiltonian (2.15), (2.16) is given by the expression (2.18). But the index of the original theory *is* not. There are two reasons by which the result (2.18) is modified. The first reason (loop effects) was already mentioned. We will deal with loops in the next section. The second reason is that the Schrödinger equation with the effective Hamiltonian (2.15) should in fact be supplemented by the condition of Weyl invariance, which is a corollary of the gauge invariance of the original theory [6]. For example, for $SU(2)$, wave functions should be invariant under the reflection $C_j \rightarrow -C_j$, $\psi \rightarrow -\psi$. Not all eigenfunctions of (2.15) satisfy this requirement. As a result, the value of the index is less than "pre-Weyl" index (2.18).

To find it, we simply write down explicit expressions for all vacuum wave functions and pick up Weyl-invariant ones. To begin with, consider the simplest $SU(2)$ case and let first k be positive. The ground states of the effective Hamiltonian have then zero fermion charge such that the second term in the Hamiltonian (2.12) brings about a negative contribution to the energy.

Let us introduce $x = C_1 L / (4\pi) \in (0, 1)$ and $y = C_2 L / (4\pi) \in (0, 1)$. All eigenfunctions of the Hamiltonian satisfy the following boundary conditions

$$\begin{aligned} \Psi(x + 1, y) &= e^{-2\pi iky} \Psi(x, y) , \\ \Psi(x, y + 1) &= e^{2\pi ikx} \Psi(x, y) . \end{aligned} \tag{2.19}$$

Their origin can be traced back to the fact that the shifts $x \rightarrow x + 1$ and $y \rightarrow y + 1$ represent *contractible* (this is the non-Abelian specifics) gauge transformations. In most gauge theories, wave functions are invariant under such transformations. But the YMCS (or Maxwell + CS) theory is special in this respect [18]. Indeed, the Gauss law constraint in the YMCS theory has the form

$$G^a = \frac{\delta \mathcal{L}}{\delta A_0^a} = D_j \Pi_j^a + \frac{\kappa}{2} \epsilon_{jk} \partial_j A_k^a ,$$

where $\Pi_j^a = F_{0j}^a/g^2 + (\kappa/2)\epsilon_{jk}A_k^a$ are the canonical momenta. The second term gives rise to the phase factor associated with an infinitesimal gauge transformation $\delta A_j^a(\xi) = D_j \alpha^a(\xi)$ (we denote here the usual spatial coordinates by ξ rather than \mathbf{x} not to confuse them with rescaled vector potentials),

$$\Psi[A_j^a + D_j \alpha^a] = \exp \left\{ -\frac{i\kappa}{2} \int d\xi \partial_j \alpha^a A_k^a \right\} \Psi[A_j^a] .$$

This property holds also for the finite contractible gauge transformations $\alpha^a = (4\pi\xi_{1,2}/L)\delta^{a3}$ implementing the shifts $C_{1,2} \rightarrow C_{1,2} + 4\pi/L$. The phase factors thus obtained coincide with those quoted in eq. (2.19); they are nothing but the holonomies $\exp \left\{ i \int_0^{4\pi/L} \mathcal{A}_1 dC_1 \right\}$ and $\exp \left\{ i \int_0^{4\pi/L} \mathcal{A}_2 dC_2 \right\}$.

Thereby, the eigenfunctions of H are elliptic functions — a variety of theta functions. The $2k$ ground states can be chosen in the form

$$\Psi_m \sim \sum_n \exp \left\{ -2\pi k \left(n + y + \frac{m}{2k} \right)^2 - 2\pi i k x y - 4\pi i k x \left(n + \frac{m}{2k} \right) \right\} , \quad (2.20)$$

where the sum runs over all integer n , and $m = 0, \dots, 2k - 1$. Not all of these states are invariant, however, under Weyl reflection $\{x \rightarrow -x, y \rightarrow -y\}$. There are only $k + 1$ Weyl invariant combinations:

$$\Psi_0, \Psi_k, \text{ and } \Psi_m + \Psi_{2k-m} \quad (m = 1, \dots, k - 1) .$$

In other words, the (tree-level) index is

$$I^{\text{tree}}[\text{SU}(2)] = k + 1 . \quad (2.21)$$

This explicit analysis was done for the constant magnetic field. However, the symmetry properties of the wave functions are robust with respect to deformations. We thus can be sure that the number of Weyl-invariant wave functions is equal to $k + 1$ also for the Hamiltonian with nonuniform magnetic field of a given flux $2k$.

Fast Hamiltonian and its ground state. What happens at negative nonzero k ? The ground states of the effective Hamiltonian (2.15) are in this case not bosonic, but fermionic, involving ψ as a factor. This factor is odd under Weyl reflection. At first sight, to provide for Weyl-evenness of the wave function, this should be compensated by picking up Weyl-odd combinations of the functions (2.20). There are $|k| - 1$ such combinations which would

lead to the conclusion that the index is equal to $k + 1$ also for negative k (giving $|k| - 1$ fermionic states). This is obviously wrong, however, the number of vacuum states cannot depend on the sign of k . To resolve this paradox, one should go into some details of the BO procedure.

When k is positive, the wave functions (2.20) are the ground states of the effective Hamiltonian (2.15). They depend on the slow variables $C_{1,2}$ and the factor ψ is absent in this case — the states are bosonic. The corresponding ground states of the *full* Hamiltonian are obtained when Ψ_m are multiplied by the ground states of the fast Hamiltonian depending on all Fourier modes (2.7) of the charged (with respect to $A^{(0)3}$) fields $A_i^{a=1,2}(\mathbf{x})$ and $\lambda^{a=1,2}(\mathbf{x}) \equiv \lambda_1^{a=1,2}(\mathbf{x}) - i\lambda_2^{a=1,2}(\mathbf{x})$. The fault in the argument above (leading to the paradoxical result $I(k < 0) = k + 1$) does not depend, however, on the presence of higher Fourier modes, and it is sufficient to analyze the dimensionally reduced theory where the fields do not depend on \mathbf{x} . Let us assume that

$$C_j = C\delta_{j1} \tag{2.22}$$

and $C \gg m = \kappa g^2$. Then the fast Hamiltonian (in the quadratic with respect to fast variables approximation) acquires the form

$$H^{\text{fast}} = \frac{g^2}{2} \left(P_j^a - \frac{\kappa}{2} \epsilon_{jk} A_j^a \right)^2 + \frac{C^2}{2g^2} (A_2^a)^2 + \frac{iC}{4g^2} \epsilon^{ab} \left(4g^4 \bar{\lambda}^a \bar{\lambda}^b + \lambda^a \lambda^b \right) + \frac{m}{2} (\lambda^a \bar{\lambda}^a - \bar{\lambda}^a \lambda^a), \tag{2.23}$$

where we have set for simplicity $L = 1$, and the index a takes two "transverse" values, $a = 1, 2$. Let us look first at the bosonic part. For each a , it describes the motion of a scalar particle in the magnetic field $B = \kappa$ with an additional oscillatory potential $\propto (A_2^a)^2$. The spectrum of a generic such Hamiltonian,

$$H = \frac{1}{2M} \left(p_x - \frac{By}{2} \right)^2 + \frac{1}{2M} \left(p_y + \frac{Bx}{2} \right)^2 + \frac{1}{2} (\omega_1^2 x^2 + \omega_2^2 y^2), \tag{2.24}$$

is well known [19, 20],

$$E_{nl} = \left(n + \frac{1}{2} \right) \Omega_1 + \left(l + \frac{1}{2} \right) \Omega_2 \tag{2.25}$$

with

$$\Omega_{1,2} = \frac{1}{2M} \left[\sqrt{B^2 + M(\omega_1 + \omega_2)^2} \pm \sqrt{B^2 + M(\omega_1 - \omega_2)^2} \right]. \tag{2.26}$$

In the case under consideration,

$$\Omega_1 = \sqrt{C^2 + m^2}, \quad \Omega_2 = 0. \tag{2.27}$$

The presence of two zero modes (as was mentioned above, $H_{\text{bos}}^{\text{fast}}$ represents the sum of two identical Hamiltonians for $a = 1, 2$) is very natural. They are none other than the *gauge* modes corresponding to the action of the Gauss constraints operators G^a on the vacuum

and all other physical wave functions. If resolving explicitly the Gauss law constraints and expressing everything in terms of physical gauge-invariant variables, the zero modes associated with gauge rotations disappear. It is convenient, however, to leave the constraints unresolved. The bosonic vacuum wave function has then the form

$$\Psi_{\text{bos}}^{\text{fast}} = \exp \left\{ -\frac{i\kappa}{2} A_1^a A_2^a - \frac{\sqrt{C^2 + m^2}}{2g^2} (A_2^a)^2 \right\} \quad (2.28)$$

It is annihilated by the operator G^3 . The vanishing of $G^{1,2}\Psi$ is not explicit, but that is because the operators $G^{1,2}$ mix A_j^a and C_j , while (2.28) was written in the assumption that the slow bosonic variables have only the third color component. The corresponding eigenfunctions of the full bosonic Hamiltonian depend only on gauge-invariant combinations, like $R_{jk} = \sum_{a=1}^3 A_j^a A_k^a$ and are annihilated by all three constraint operators.

The wave function (2.28) is multiplied by the ground state of the fermionic part of the Hamiltonian (2.23),

$$\Psi_{\text{ferm}}^{\text{fast}} = 4ig^2 + \frac{\sqrt{C^2 + m^2} - m}{C} \epsilon^{ab} \lambda^a \lambda^b. \quad (2.29)$$

The total energy is zero as it should: the contribution $\sqrt{C^2 + m^2}$ of the bosonic part cancels the fermionic contribution $-\sqrt{C^2 + m^2}$. The Hamiltonian (2.23) and the wave functions (2.28), (2.29) were written in the assumption (2.22). It is equally easy to write them for arbitrary C_j . We will only need the expression for the fermion wave function:

$$\Psi_{\mathbf{C}}^{\text{fast}} = 4ig^2 + \frac{(C_1 - iC_2) (\sqrt{C^2 + m^2} - m) \epsilon^{ab} \lambda^a \lambda^b}{C^2}. \quad (2.30)$$

Recalling (2.8) and the bosonic (for $k > 0$) nature of the ground state of the effective Hamiltonian (2.12), we see that the ground states of the full Hamiltonian have the structure

$$\Psi_{k>0}^{(0)} = \Phi_1(R_{jk}) + \Phi_2(R_{jk}) \epsilon^{abc} (A_1 - iA_2)^a \lambda^b \lambda^c \quad (2.31)$$

(where now $a = 1, 2, 3$). These wave functions are gauge invariant.³ In the vicinity of the valley $\epsilon^{abc} A_j^b A_k^c = 0$ and for large $C \gg m$, the approximate equality $\Phi_1 \approx 4ig^2 |\mathbf{C}| \Phi_2$ holds. Restoring the distinction between the fast and slow variables, we can represent

$$\Phi_1 = \Psi^{\text{slow}}(C_j) \Psi_{\mathbf{C}}^{\text{fast}}(A_j^{1,2}), \quad (2.32)$$

and the gauge invariance of Φ_1 , which means in particular its G -parity (invariance under rotations by π along the second color axis), entails the Weyl invariance of $\Psi^{\text{slow}}(C_j)$. We reproduce thereby our previous result.

We are ready now to go over to the negative k case and to understand how the paradox is resolved. The point is that, when $k < 0$, the expression (2.30) is *inconvenient*. The convenient expression is obtained from (2.30) by multiplying it by the factor $C_1 + iC_2$,

$$\tilde{\Psi}_{\mathbf{C}}^{\text{fast}} = 4ig^2 (C_1 + iC_2) + \left(\sqrt{C^2 + m^2} + |m| \right) \epsilon^{ab} \lambda^a \lambda^b. \quad (2.33)$$

³They are also invariant with respect to $O(2)$ rotations, see eq. (2.11).

Indeed, as far as the fast Hamiltonian and its eigenfunctions are concerned, the factors depending only on slow variables are absolutely irrelevant and can be chosen arbitrarily. The product $\psi\tilde{\Psi}$ can now be easily promoted to a gauge-invariant eigenstate of the full Hamiltonian,

$$\Psi_{k<0}^{(0)} = 2\Phi_2(R_{jk})(A_1 + iA_2)^a \lambda^a + \frac{1}{6}\Phi_1(R_{jk})\epsilon^{abc}\lambda^a\lambda^b\lambda^c. \quad (2.34)$$

Again, Φ_1 can be represented as in (2.32), and the coefficients $\Psi^{\text{slow}}(C_j)$ (the effective wave functions being obtained from them by multiplying by ψ) should be *even* rather than odd with respect to Weyl reflections, such that

$$I^{\text{tree}}(k < 0) = k - 1. \quad (2.35)$$

Going back to (2.33), one can notice that, in contrast to the function (2.30), this function is *odd* with respect to rotations by π around the second color axis producing the reflections $\mathbf{C} \equiv \mathbf{A}^3 \rightarrow -\mathbf{C}$, $\lambda^1 \rightarrow -\lambda^1, \lambda^2 \rightarrow \lambda^2$. This oddness compensates for the Weyl-oddness of the factor ψ and requires for the coefficient $\Psi^{\text{slow}}(C_j)$ to be Weyl-even.

Higher unitary groups. Consider first SU(3) and let k be positive. There are $2r = 4$ slow bosonic variables, which are convenient to choose as $x^a = C_1^a L / (4\pi)$, $y^a = C_2^a L / (4\pi)$. Both x^a and y^a vary within an elementary cell of the SU(3) coroot lattice, alias the maximal torus. The latter represents a rhombus shown in figure 1 such that $\exp\{iLC^a t^a\} = 1$ in the vertices of the rhombus. The effective Hamiltonian (2.15) can be represented in the form

$$H_{\text{eff}} = \frac{g^2}{2L^2} \left(P_x^a - \frac{\kappa L^2}{2} y^a \right)^2 + \frac{g^2}{2L^2} \left(P_y^a + \frac{\kappa L^2}{2} x^a \right)^2 + \frac{\kappa g^2}{2} (\psi^a \bar{\psi}^a - \bar{\psi}^a \psi^a). \quad (2.36)$$

We have found earlier [see eq. (2.18)] that this Hamiltonian has $3k^2$ ground states. The corresponding wave functions represent generalized theta functions defined on the coroot lattice of SU(3). They satisfy the boundary conditions

$$\begin{aligned} \Psi(\mathbf{x} + \mathbf{a}, \mathbf{y}) &= e^{-2\pi i k \mathbf{a} \mathbf{y}} \Psi(\mathbf{x}, \mathbf{y}), \\ \Psi(\mathbf{x} + \mathbf{b}, \mathbf{y}) &= e^{-2\pi i k \mathbf{b} \mathbf{y}} \Psi(\mathbf{x}, \mathbf{y}), \\ \Psi(\mathbf{x}, \mathbf{y} + \mathbf{a}) &= e^{2\pi i k \mathbf{a} \mathbf{x}} \Psi(\mathbf{x}, \mathbf{y}), \\ \Psi(\mathbf{x}, \mathbf{y} + \mathbf{b}) &= e^{2\pi i k \mathbf{b} \mathbf{x}} \Psi(\mathbf{x}, \mathbf{y}), \end{aligned} \quad (2.37)$$

where $\mathbf{a} = (1, 0)$, $\mathbf{b} = (-1/2, \sqrt{3}/2)$ are simple coroots. When $k = 1$, there are 3 such states:

$$\begin{aligned} \Psi_0 &= \sum_{\mathbf{n}} \exp \left\{ -2\pi(\mathbf{n} + \mathbf{y})^2 - 2\pi i \mathbf{x} \mathbf{y} - 4\pi i \mathbf{x} \mathbf{n} \right\}, \\ \Psi_{\Delta} &= \sum_{\mathbf{n}} \exp \left\{ -2\pi(\mathbf{n} + \mathbf{y} + \Delta)^2 - 2\pi i \mathbf{x} \mathbf{y} - 4\pi i \mathbf{x}(\mathbf{n} + \Delta) \right\}, \\ \Psi_{\square} &= \sum_{\mathbf{n}} \exp \left\{ -2\pi(\mathbf{n} + \mathbf{y} + \square)^2 - 2\pi i \mathbf{x} \mathbf{y} - 4\pi i \mathbf{x}(\mathbf{n} + \square) \right\}, \end{aligned} \quad (2.38)$$

where the sums run over the coroot lattice, $\mathbf{n} = m_a \mathbf{a} + m_b \mathbf{b}$ with integer $m_{a,b}$. Now, Δ , \square are certain special points on the maximal torus (called *fundamental coweights*) satisfying

$$\Delta \mathbf{a} = \square \mathbf{b} = 1/2, \quad \square \mathbf{a} = \Delta \mathbf{b} = 0 .$$

The group elements that correspond to the points $0, \Delta$, and \square belong to the center of the group,

$$\begin{aligned} U_0 &= \text{diag}(1, 1, 1), \\ U_{\square} &= \text{diag}(e^{2i\pi/3}, e^{2i\pi/3}, e^{2i\pi/3}), \\ U_{\Delta} &= \text{diag}(e^{4i\pi/3}, e^{4i\pi/3}, e^{4i\pi/3}). \end{aligned} \tag{2.39}$$

They are obviously invariant with respect to Weyl symmetry, which permutes the eigenvalues.⁴ Thus, all three states (2.38) at the level $k = 1$ are Weyl invariant. But for $k > 1$, the number of invariant states is less than $3k^2$. For an arbitrary k and in the constant field, the wave functions of all $3k^2$ eigenstates can be written in the same way as in (2.38),

$$\Psi_{\mathbf{n}} = \sum_{\mathbf{n}} \exp \left\{ -2\pi(\mathbf{n} + \mathbf{y} + \mathbf{w}_n)^2 - 2\pi i \mathbf{x} \mathbf{y} - 4\pi i \mathbf{x}(\mathbf{n} + \mathbf{w}_n) \right\}, \tag{2.40}$$

where \mathbf{w}_n are coweights whose projections on the simple coroots \mathbf{a} , \mathbf{b} represent integer multiples of $1/(2k)$. Only the functions (2.38) with \mathbf{w}_n lying of the vertices of the Weyl alcove are Weyl invariant. For all other \mathbf{w}_n , one should construct Weyl invariant combinations

$$\Psi = \sum_{\hat{x} \in W} \hat{x} \Psi_{\mathbf{w}_n}. \tag{2.41}$$

As a result, the number of Weyl invariant states is equal to the number of the coweights \mathbf{w}_n lying within the Weyl alcove. For example, in the case $k = 4$, there are 15 such coweights shown in figure 2 and, correspondingly, 15 vacuum states.

For a generic k , the number of the states is

$$I_{\text{SU}(3)}^{\text{tree}}(k > 0) = \sum_{m=1}^{k+1} m = \frac{(k+1)(k+2)}{2}. \tag{2.42}$$

The analysis for $\text{SU}(4)$ is similar. The Weyl alcove is the tetrahedron with the vertices corresponding to the center elements of $\text{SU}(4)$. A pure geometric counting gives

$$I_{\text{SU}(4)}^{\text{tree}}(k > 0) = \sum_{m=1}^{k+1} \sum_{p=1}^m p = \frac{(k+1)(k+2)(k+3)}{6}. \tag{2.43}$$

The generalization for an arbitrary N is obvious. It gives the result (1.3).

⁴ For a generic coweight, the Weyl group elements permuting the elements (12), (13) and (23) are represented as the reflections with respect to the dashed lines bounding the Weyl alcove (\equiv the quotient T/W) in figure 1.

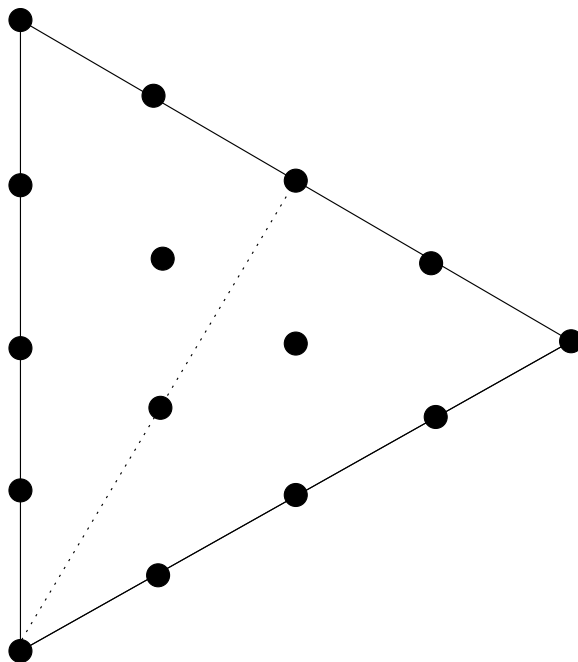


Figure 2. SU(3): 15 vacuum states for $k = 4$. The dotted line marks the boundary of the Weyl alcove for G_2 .

The large k asymptotics is $I \sim k^{N-1}/(N-1)!$, which is simply the "pre-Weyl" index (2.18) divided by the order of the Weyl group. For negative k , the ground states of the effective Hamiltonian acquire the fermionic factor

$$\sim \prod_{a=1}^{N-1} \psi^a .$$

For odd N , the ground states are still bosonic and the index is still positive. For even N , the ground states are fermionic and the index is negative. One need not perform here a detailed analysis, as we did in the case of SU(2), but simply use the symmetry requirements. They dictate the formula

$$I_{\text{SU}(N)}^{\text{tree}}(\text{any } k) = [\text{sgn}(k)]^{(N-1)} \binom{N + |k| - 1}{N - 1} . \tag{2.44}$$

Symplectic groups. The counting of vacuum states for the symplectic groups $\text{Sp}(2r)$ is simpler (sympler?) than for unitary groups. The maximal torus of $\text{Sp}(2r)$ can be represented as $g = \exp \left\{ i \sum_{p=1}^r \alpha_p e_p \right\}$, where

$$\begin{aligned} e_1 &= \frac{1}{2} \text{diag} (1, 0, \dots, 0, -1) \\ &\dots \\ e_r &= \frac{1}{2} \text{diag} (0, \dots, 0, 1, -1, 0, \dots, 0) \end{aligned} \tag{2.45}$$

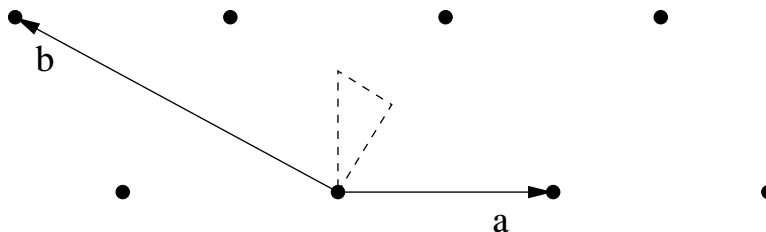


Figure 3. Coroot lattice and Weyl alcove for G_2 .

is the orthonormal basis in the Cartan subalgebra and $\alpha_k \in (0, 4\pi)$. The coroot lattice is thus hypercubic.⁵

The effective BO Hamiltonian represents a simple sum of r copies of the BO Hamiltonian for $\text{Sp}(2) \equiv \text{SU}(2)$. The path integral for the pre-Weyl index is the r -th power of such path integral for $\text{SU}(2)$ giving

$$I_{\text{pre-Weyl}}^{\text{Sp}(2r)} = (2k)^r . \tag{2.46}$$

The vacuum wave functions represent the products of the $\text{SU}(2)$ wave functions (2.20). The Weyl group changes the sign for each α_k and permutes them. Its order is thus $2^r r!$. Thus, the number of Weyl-invariant vacuum states can be counted as the number of components of a symmetric tensor of rank r where each index can take $k + 1$ values. For positive k , it is given by eq. (1.6). The index for negative k is restored by symmetry, $I(-k) = (-1)^r I(k)$.

G_2 . The simple coroots for G_2 are $\mathbf{a} = (1, 0)$ and $\mathbf{b} = (-3/2, \sqrt{3}/2)$. The lattice of coroots and the maximal torus look exactly in the same way as for $\text{SU}(3)$ (see figure 3). Hence, the pre-Weyl index is equal to $3k^2$, as for $\text{SU}(3)$. The difference is that the Weyl group involves now 12 rather than 6 elements, and the Weyl alcove is two times smaller than for $\text{SU}(3)$. As a result, for $k = 4$, we have only 9 (rather than 15) Weyl-invariant states (see figure 2). The general formula is given in eq. (1.7).

3 Loop corrections

In (nonchiral) $4d$ SYM theories, the evaluations of the index based on the analysis of the tree effective BO Hamiltonian are not modified when loops are taken into account. For $3D$ SYMCS theories, this is not so and loop effects are important. It seems plausible, however, that one can restrict oneself by *one-loop* analysis; second and higher loops do not further modify the result. We will argue this point a bit later.

3.1 Infinite volume

We are interested in one-loop corrections to the effective Hamiltonian in finite volume. But they are genetically related to one-loop renormalization of the infinite volume the-

⁵ There are $r - 1$ long and one short simple coroot,

$$a_1 = e_1 - e_2, \dots, a_{r-1} = e_{r-1} - e_r, b = e_r .$$

But the basis (2.45) is more convenient than the basis $\{a_1, \dots, a_{r-1}, b\}$.

ory [21–23]. For pure YMCS theory, the latter was dealt with in ref. [7]. For $\mathcal{N} = 1, 2, 3$ SYMCS theories, the corresponding calculations have been performed in [8]. Let us remind their salient features.

After fixing the gauge and introducing the ghosts, the Lagrangian acquires the form

$$\begin{aligned} \mathcal{L} = & -\frac{1}{2g^2} \text{Tr} \{F_{\mu\nu}^2\} + \kappa \epsilon^{\mu\nu\rho} \text{Tr} \left\{ A_\mu \partial_\nu A_\rho - \frac{2i}{3} A_\mu A_\nu A_\rho \right\} + \partial^\mu \bar{\eta}^a \partial_\mu \eta^a \\ & + f^{abc} \partial^\mu \bar{\eta}^a A_\mu^b \eta^c - \frac{1}{2\xi} (\partial^\mu A_\mu^a)^2 + \text{fermion terms} \end{aligned} \quad (3.1)$$

It is convenient to use Landau gauge $\xi \rightarrow 0$. Then the tree gluon propagator is

$$\Delta_{\mu\nu}^{(0)} = -\frac{ig^2}{p^2 - m^2} \left[g_{\mu\nu} - \frac{p_\mu p_\nu}{p^2} + \frac{im\epsilon_{\mu\nu\rho} p^\rho}{p^2} \right]. \quad (3.2)$$

It has the pole at $p^2 = 0$ associated with gauge degrees of freedom and the physical pole at $p^2 = m^2$. The transverse gluon polarization operator has two structures

$$\Pi_{\mu\nu} = (p^2 g_{\mu\nu} - p_\mu p_\nu) \Pi_e(p^2) - i\epsilon_{\mu\nu\rho} p^\rho \Pi_o(p^2). \quad (3.3)$$

Introducing also the ghost polarization operator $\tilde{\Pi}(p^2)$, the bosonic part of the renormalized Lagrangian is expressed as⁶

$$\begin{aligned} \mathcal{L}^{\text{ren}} = & -\frac{1}{2g^2} [1 + g^2 \Pi_e(0)] \text{Tr} \{F_{\mu\nu}^2\} + \kappa \left(1 - \frac{\Pi_o(0)}{\kappa} \right) \epsilon^{\mu\nu\rho} \text{Tr} \left\{ A_\mu \partial_\nu A_\rho - \frac{2i}{3} A_\mu A_\nu A_\rho \right\} \\ & + [1 + \tilde{\Pi}(0)] \partial^\mu \bar{\eta}^a \partial_\mu \eta^a + f^{abc} \partial^\mu \bar{\eta}^a A_\mu^b \eta^c + \text{gauge fixing term}. \end{aligned} \quad (3.4)$$

($\tilde{\Pi}(0)$ is the ghost polarization operator). Redefining the fields η, A , it can be rewritten as

$$\mathcal{L}^{\text{ren}} = -\frac{1}{2g_{\text{ren}}^2} \text{Tr} \{F_{\mu\nu}^2\} + \kappa_{\text{ren}} \epsilon^{\mu\nu\rho} \text{Tr} \{A_\mu \partial_\nu A_\rho + \dots\} + \partial^\mu \bar{\eta}^a \partial_\mu \eta^a + f^{abc} \partial^\mu \bar{\eta}^a A_\mu^b \eta^c + \dots, \quad (3.5)$$

where

$$\begin{aligned} \kappa_{\text{ren}} &= \kappa \left[1 - \frac{1}{\kappa} \Pi_o(0) + 2\tilde{\Pi}(0) \right], \\ \frac{1}{g_{\text{ren}}^2} &= \frac{1}{g^2} \left[1 + g^2 \Pi_e(0) + 2\tilde{\Pi}(0) \right]. \end{aligned} \quad (3.6)$$

The relevant 1-loop graphs are depicted in figure 4. Let us discuss first the renormalization of κ . The simplest is the contribution of the fermion loop in figure 4a. It gives

$$\Pi_o^F(0) = mc_V \int \frac{d^3p}{(2\pi)^3} \frac{1}{(p^2 + m^2)^2} = \frac{c_V}{8\pi}, \quad (3.7)$$

p being the Euclidean momentum. The bosonic contribution can be obtained from eqs. (17),(18) of ref. [8],

$$\begin{aligned} \Pi_o^B(0) - 2\kappa\tilde{\Pi}(0) &= -\frac{2mc_V}{3} \int \frac{d^3p}{(2\pi)^3} \frac{5p^2 + 2m^2}{p^2(p^2 + m^2)^2} + \frac{4mc_V}{3} \int \frac{d^3p}{(2\pi)^3} \frac{1}{p^2(p^2 + m^2)} \\ &= -2mc_V \int \frac{d^3p}{(2\pi)^3} \frac{1}{(p^2 + m^2)^2} = -\frac{c_V}{4\pi}. \end{aligned} \quad (3.8)$$

⁶It happens that the ghost-ghost-gluon vertex is not renormalized in Landau gauge at the one-loop level.

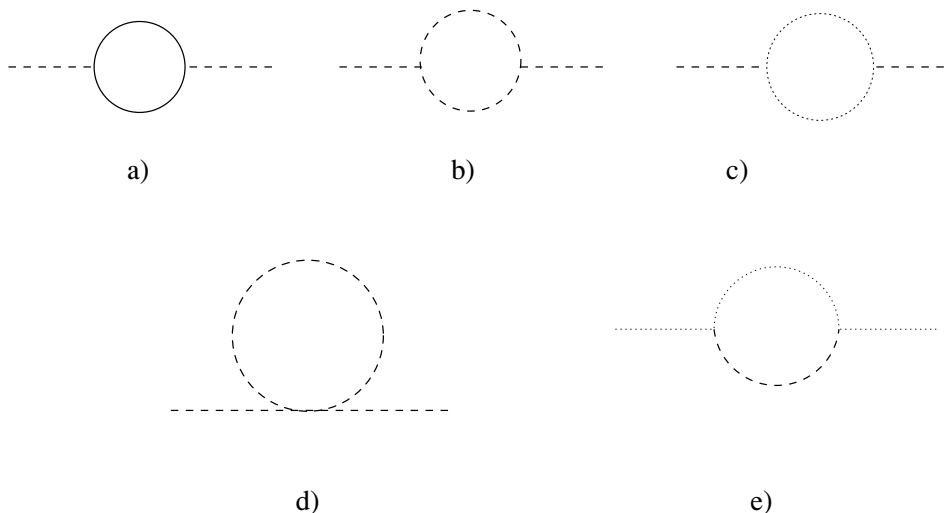


Figure 4. Gluon and ghost polarization operators.

Thus, the fermion loop leads to the shift $k \rightarrow k - c_V/2$, while the boson loops give $k \rightarrow k + c_V$, such that

$$k_{\text{ren}} = k + c_V/2 . \tag{3.9}$$

(That was for positive k . When k is negative, $k_{\text{ren}} = k - c_V/2$.) Note the same structure of momentum integrals in the fermionic and bosonic contributions.

The coefficient k is not renormalized beyond one loop. The proof is simple. Consider the case $k \gg c_V$. This is the perturbative regime where the loop corrections are ordered such that $\Delta k^{(1 \text{ loop})} \sim O(1)$, $\Delta k^{(2 \text{ loops})} \sim O(1/k)$, etc. But the corrections of order $\sim 1/k$ to k are not allowed. To provide for gauge invariance, k_{ren} should be integer. Thereby, all higher loop contributions in k_{ren} must vanish.

When c_V is odd (in particular, when N is odd for $SU(N)$ groups), the coefficient k is shifted by a half-integer. The physical requirement for k to be integer refers to k_{ren} rather than k_{tree} . This implies that, for consistency, k_{tree} should be half-integer.⁷

The renormalization of the coefficient $1/g^2$ of the kinetic term can be obtained from the result

$$m_{\text{ren}} = m \left[1 + \frac{2c_V}{k} \right] \tag{3.10}$$

for the mass renormalization,⁸ from eq. (3.9), and from the relation (2.3). One obtains

$$\frac{1}{g_{\text{ren}}^2} = \frac{1}{g^2} \left(1 - \frac{3c_V}{2k} \right) . \tag{3.11}$$

⁷Another way to see this is to notice that, for odd c_V , a topologically nontrivial gauge transformation brings about the extra factor -1 due to the level flow in the fermion determinant. As a result, the quantization condition is not $\exp\{2\pi i k_{\text{tree}}\} = 1$, but rather $\exp\{2\pi i k_{\text{tree}}\} = -1$, giving half-integer k_{tree} [1, 24, 25].

⁸See eq. (23) in ref. [8]. Note that eq. (22) there involves a misprint with misplaced factor $\ln 3$.

Background field calculation. The calculations [7, 8] were done in the conventional diagrammatic approach. But to generalize them to the finite volume case, the background field technique is more appropriate and relevant. We are not aware of a honest background field calculation in SYMCS or YMCS systems. However, the bosonic shift $k \rightarrow k + c_V$ can be reproduced rather easily in the background field technique, if making a little surgery in the regulator sector and replacing the gauge-invariant YM action by a simple-minded gluon mass term [26, 27]. Consider the pure CS term and split the gauge field A_μ in two parts,

$$A_\mu = A_\mu^{\text{cl}} + \frac{1}{\sqrt{\kappa}} a_\mu^{\text{qu}} \quad (3.12)$$

(the factor $1/\sqrt{\kappa}$ being introduced for convenience). The background field A_μ^{cl} is assumed to satisfy the classical equations of motion $F_{\mu\nu}^{\text{cl}} = 0$. Then the CS action is reduced in the quadratic in a approximation to

$$S_{\text{CS}} = S_{\text{CS}}(A_\mu^{\text{cl}}) + \epsilon^{\mu\nu\rho} \text{Tr} \int d^3x a_\mu D_\nu a_\rho . \quad (3.13)$$

To do perturbative calculations, one has to fix the gauge. The most convenient one is the background Landau gauge $D^\mu a_\mu = 0$, where the covariant derivative D_μ involves only the classical part. We are using then a slightly nonstandard way to implement this gauge condition by introducing the Lagrange multiplier ϕ and adding to the Lagrangian the term

$$\Delta\mathcal{L} = [\phi D^\mu a_\mu - (D^\mu \phi) a_\mu] . \quad (3.14)$$

There are also ghosts with the Lagrangian $\mathcal{L}_{\text{ghost}} = -\text{Tr} \{ \bar{c} D_\mu^2 c \}$, but they do not affect the renormalisation of κ we are interested in. One can now combine a_μ and ϕ into a four-dimensional object $B_M = \{a_\mu, \phi\}$ ($M = 1, \dots, 4$), such that the (relevant part of) the quantum action takes form

$$S_{\text{qu}} = i \text{Tr} \int d^3x B D^\mu \Gamma_\mu B , \quad (3.15)$$

where Γ_μ are certain traceless 4×4 matrices satisfying the same (anti)commutation relations as Pauli matrices. This Lagrangian is very similar to the Dirac Lagrangian. There are two differences: (i) There are twice as many B_M 's as λ_α 's, giving a twice as large contribution to the effective action. (ii) B_M are bosons rather than fermions and contribute to the effective action with an opposite sign.

Thus, the bosonic contribution in this approach has exactly the same structure as the fermion one, up to a factor -2 . Of course, we are a little bit cheating here. The renormalization of κ in the theory with the action (3.15) is zero or, better to say, not defined until it is regularized in the infrared. A natural regularization is provided by the Yang-Mills term in the action. But the calculation of ref. [27] uses instead a simple-minded regularization consisting in adding to the Lagrangian the gauge boson mass term

$$\Delta\mathcal{L}_m \sim m \text{Tr} \{ B^M B_M \} \quad (3.16)$$

(with a properly chosen sign). This regularization is not so nice as the YM one (it is not gauge invariant, etc), but it has the advantage that the calculations become very simple. Actually, one does not need to do them again, but can simply use the fermion results. This gives $\Delta k_{\text{bos}} = -2\Delta k_{\text{ferm}} = c_V$, which coincides with the result of [7].

3.2 Finite volume

Consider first the SU(2) theory. As was mentioned above, the coefficient κ (with the factor L^2) has the meaning of magnetic field on the dual torus for the effective finite volume BO Hamiltonian. Renormalization of κ means renormalization of this magnetic field. At the tree level, the magnetic field was constant. The renormalized field is not constant, but depends on the slow variables \mathbf{C} . To find this dependence, one has to substitute

$$\begin{aligned} \mathbf{p} &\rightarrow 2\pi\mathbf{n}/L - \mathbf{C} \\ \int \frac{d\mathbf{p}}{(2\pi)^2} &\rightarrow \frac{1}{L^2} \sum_{\mathbf{n}} \end{aligned} \tag{3.17}$$

in the integral $\sim \int d^3p$ for $\Delta\kappa$.⁹ We derive for positive k

$$\begin{aligned} \Delta\mathcal{B}^F(\mathbf{C}) &= -2m \int_{-\infty}^{\infty} \frac{d\epsilon}{2\pi} \sum_{\mathbf{n}} \frac{1}{\left[\epsilon^2 + \left(\frac{2\pi\mathbf{n}}{L} - \mathbf{C}\right)^2 + m^2\right]^2} \\ &= -\frac{m}{2} \sum_{\mathbf{n}} \frac{1}{\left[\left(\frac{2\pi\mathbf{n}}{L} - \mathbf{C}\right)^2 + m^2\right]^{3/2}}, \\ \Delta\mathcal{B}^B(\mathbf{C}) &= -2\Delta\mathcal{B}^F(\mathbf{C}). \end{aligned} \tag{3.18}$$

For most values of \mathbf{C} , this correction is of order $\sim mL^3 = \kappa g^2 L^3$, which is small compared to $\mathcal{B}^{\text{tree}} \sim \kappa L^2$ if $g^2 L \ll 1$, which we assume. Also in the ‘‘corner’’ of the torus $|\mathbf{C}| \ll m$, the correction $\Delta\mathcal{B} \sim 1/m^2$ is small compared to $\mathcal{B}^{\text{tree}}$ for very large k , $k \gg 1/(mL)^2$. Otherwise, $\Delta\mathcal{B}$ dominates there.¹⁰ In any case, the integral for the flux associated with the corrections (3.18) is saturated by the regions $|\mathbf{C}| \lesssim m$, etc in the vicinity of Weyl fixed points, being equal to

$$\begin{aligned} \Delta\Phi^F &= -\frac{m}{2} \sum_{\mathbf{n}} \int_{C_j \in (0, 4\pi/L)} d^2C \frac{1}{\left[\left(\frac{2\pi\mathbf{n}}{L} - \mathbf{C}\right)^2 + m^2\right]^{3/2}} \\ &= -2m \int \frac{d^2p}{(p^2 + m^2)^{3/2}} = -4\pi, \end{aligned} \tag{3.19}$$

which should be compared with the tree flux $\Phi^{\text{tree}} = 4\pi k$. The total flux is thus

$$\Phi^{\text{tot}} = \Phi^{\text{tree}} + \Delta\Phi^F + \Delta\Phi^B = 4\pi(k - 1 + 2) \tag{3.20}$$

The renormalized flux means the renormalized index. For SU(2), we obtain the result $2(k + 1)$ for the pre-Weyl index. After taking into account the Weyl invariance condition,

⁹Heuristically, the appearance of \mathbf{C} in (3.17) is due to replacing the usual derivative by the covariant one, evaluated in the constant potential background. The accurate calculation performed for the fermions in the appendix confirms this rule, but we will see that the mechanism by which the combination $2\pi\mathbf{n}/L - \mathbf{C}$ arises is not so trivial. It appears, indeed, in the integral for the induced magnetic field, but the corresponding integral for $\mathcal{A}_k(\mathbf{C})$ (which enters the effective Lagrangian) has a more complicated structure.

¹⁰The same concerns all the points $\mathbf{C} = 2\pi\mathbf{n}/L$. Note that there are *four* such points in the dual torus $C_j \in (0, 4\pi/L)$ with $\mathbf{n} = (0, 0), (0, 1), (1, 0), (1, 1)$, corresponding to the group elements $\Omega_j = \exp\{iLt^3 C_j\} = \{\pm 1, \pm 1\}$. These points are invariant with respect to the action of the Weyl group.

we derive

$$I(k \neq 0) = \text{sgn}(k)(|k| + 2) . \tag{3.21}$$

When $k = 0$, the magnetic flux giving the pre-Weyl index is zero, and loop corrections do not modify this result (when k_{tree} vanishes, this is also the case for k_{ren}). A vanishing index suggests breaking of supersymmetry, but whether or not supersymmetry is actually broken in this case is a nontrivial question requiring special studies.

The result (3.21) involves the tree contribution and the one-loop correction. One can argue that higher-loop corrections must vanish. The reasoning is the same as for renormalization of k in the infinite volume: for large k a two-loop correction should be suppressed as $\sim 1/k$. But the coefficient of $1/k$ should vanish - otherwise the renormalized flux and renormalized index would not be integer.

A similar analysis (see appendix) can be done for the groups of higher rank. It displays that, at the level of one loop, the generalized magnetic flux (2.17) evaluated with renormalized $\mathcal{B}^{ab}(\mathbf{C}^a)$ is obtained from the corresponding tree expression by substituting $k \rightarrow k + c_V/2$. This suggests (though does not prove rigourously) that there is no nontrivial renormalization of the generalized flux due to second and higher loops.¹¹ For $\text{SU}(N > 2)$, the result is

$$I(k \neq 0, N) = [\text{sgn}(k)]^{N-1} \binom{|k| + 3N/2 - 1}{N - 1} . \tag{3.22}$$

For symplectic groups,

$$I(k \neq 0, r) = [\text{sgn}(k)]^r \binom{|k| + 3r/2 + 1/2}{r} . \tag{3.23}$$

For G_2 , $c_V = 4$, and the result for the index is given by the expression (1.7) with $|k|$ being substituted by $|k| + 2$. When $k = 0$ (this is allowed for even N and for odd r), the index vanishes.

Metric and the index. Let us restrict ourselves here by the discussion of $\text{SU}(2)$. The index is a topological quantity and is determined by relevant topological invariants, like the magnetic flux (alias, the first Chern class of the relevant to the problem $\text{U}(1)$ bundle on the moduli space of flat $\text{SU}(2)$ connections on T^2).¹² Thus, it is sensitive only to the modifications of the flux due to loops and is *robust* with respect to other loop corrections to BO Hamiltonian. In particular, the index is not sensitive to corrections to the *metric*, which are well there and might modify significantly the effective Hamiltonian in corner of the torus and other Weyl fixed points.¹³ At the one loop level, these corrections are

¹¹ To prove it, one has to exclude a nontrivial two- and higher-loop renormalization of the generalized flux not reduced to renormalization of k .

¹²The pre-Weyl index is just equal to the first Chern class. The index taking into account the Weyl-invariance of wave functions can be related to a certain more complicated invariant [1].

¹³ Such corrections are also present for $4d$ theories. In $4d$ supersymmetric QED, they were calculated by us long time ago [28]. For non-Abelian $4d$ theories, this was done in [29].

associated to the renormalization (3.11) of the coupling $1/g^2$ by the same token as the correction (3.18) is associated with renormalization of κ . The explicit calculation gives

$$\delta g^{1 \text{ loop}}(\mathbf{C}) = \frac{c_V g^2}{L^2 (\mathbf{C}^2 + m^2)^{3/2}}. \quad (3.24)$$

To see insensitivity of the index to the metric explicitly, let us write the supersymmetric Hamiltonian for the system with nontrivial metric and calculate the corresponding phase space integral, as in eq. (2.13). The Hamiltonian is derived from the supersymmetric Lagrangian

$$\mathcal{L} = \int d\bar{\theta}d\theta \left[\frac{g(\bar{Z}, Z)}{4} \mathcal{D}\bar{Z}\bar{\mathcal{D}}Z + \Phi(\bar{Z}, Z) \right], \quad (3.25)$$

with

$$\mathcal{D} = -\frac{\partial}{\partial\theta} + i\theta\frac{\partial}{\partial t}, \quad \bar{\mathcal{D}} = \frac{\partial}{\partial\bar{\theta}} - i\bar{\theta}\frac{\partial}{\partial t}. \quad (3.26)$$

Z is a chiral superfield, $\mathcal{D}Z = 0$, which is convenient to write in components as

$$Z = z + \frac{\sqrt{2}}{\sqrt{g(\bar{z}, z)}}\theta\bar{\psi} - iz\theta\bar{\theta}. \quad (3.27)$$

Then

$$\mathcal{L} = g\dot{z}\dot{\bar{z}} - \dot{z}\mathcal{A} - \dot{\bar{z}}\bar{\mathcal{A}} + \frac{i}{2}(\bar{\psi}\dot{\psi} - \dot{\bar{\psi}}\psi) + \frac{i\bar{\psi}\psi}{2}(\dot{z}\bar{\theta} \ln g - \dot{\bar{z}}\theta \ln g) + \frac{\mathcal{B}}{g}\bar{\psi}\psi, \quad (3.28)$$

where $\mathcal{A} = i\partial\Phi$ and $\mathcal{B} = 2\partial\bar{\theta}\Phi$. The canonical Hamiltonian is

$$H = f^2(\pi + \mathcal{A})(\bar{\pi} + \bar{\mathcal{A}}) + if\bar{\psi}\psi [\pi\bar{\theta}f - \bar{\pi}\theta f + \bar{\theta}(\mathcal{A}f) - \theta(\bar{\mathcal{A}}f)] \quad (3.29)$$

with $f = g^{-1/2}$. It can be represented as the Poisson bracket $\{\bar{Q}, Q\}$ of the supercharges

$$\begin{aligned} Q &= f(z, \bar{z})\psi(\pi + \mathcal{A}) \\ \bar{Q} &= f(z, \bar{z})\bar{\psi}(\bar{\pi} + \bar{\mathcal{A}}). \end{aligned} \quad (3.30)$$

When $f = 1$, the Hamiltonian (3.29) coincides with (2.15) (with g^2/L^2 set to 1 and color index a suppressed) after identification $z = (C_1 - iC_2)/\sqrt{2}$, $\pi = (P_1 + iP_2)/\sqrt{2}$, $\mathcal{A} = (\mathcal{A}_1 + i\mathcal{A}_2)/\sqrt{2}$. It is straightforward to see that the index does not depend on the metric and the relation (2.13) still holds.

3.3 Higher \mathcal{N}

$\mathcal{N} = 2$. The $\mathcal{N} = 2$ SYMCS theory involves one more adjoint Majorana fermion and an extra adjoint real scalar Φ . It has the following Lagrangian

$$\begin{aligned} \mathcal{L} &= \frac{1}{g^2} \text{Tr} \int d^3x \left\{ -\frac{1}{2} F_{\mu\nu}^2 + (D_\mu\Phi)^2 - m^2\Phi^2 + i\bar{\lambda}_f \not{D}\lambda_f \right\} + \\ &\quad \kappa \text{Tr} \int d^3x \left\{ \epsilon^{\mu\nu\rho} \left(A_\mu \partial_\nu A_\rho - \frac{2i}{3} A_\mu A_\nu A_\rho \right) - \bar{\lambda}_f \lambda_f \right\}, \end{aligned} \quad (3.31)$$

$f = 1, 2$. Its Yang-Mills part is obtained by dimensional reduction from the standard $\mathcal{N} = 1$ $4d$ SYM theory. The effective finite-volume Lagrangian depends now on $3r$ bosonic variables \mathbf{C}^a, Φ^a , and on $2r$ holomorphic fermion variables $\lambda_f^a, a = 1, \dots, r$. The Lagrangian enjoys $\mathcal{N} = 2$ SQM symmetry.¹⁴

Similar to the effective Lagrangian for *chiral* $4d$ theories [30, 31], the Lagrangian belongs to the class of generalized de Crombrugghe-Rittenberg supersymmetric Hamiltonians [32]. When $r = 1$, the latter reads

$$H = \frac{1}{2}(\mathbf{P} + \mathcal{A})^2 + \frac{1}{2}K^2 + \mathcal{B}_j \bar{\psi} \sigma_j \psi, \tag{3.32}$$

where $\mathcal{B} = \nabla \times \mathcal{A} = -\nabla K$, and K is an arbitrary function of three bosonic variables \mathbf{A} . For chiral $4d$ QED, the function K was singular, $K \propto 1/|\mathbf{A}|$. The corresponding Hamiltonian described the motion in a monopole field with extra scalar potential $\sim 1/\mathbf{A}^2$. The singularity at $|\mathbf{A}| = 0$ led to nontrivial Berry's phase [30]. In our case, K is much simpler, $K = m\tilde{\Phi}$ ($\tilde{\Phi} \equiv \Phi^{3(0)}$). This corresponds to uniform magnetic field supplemented by an oscillatory potential in z direction. The Hamiltonian can be presented in the form

$$\frac{L^2}{g^2}H = \frac{1}{2} \left(P_j - \frac{B}{2} \epsilon_{jk} C_k \right)^2 + \frac{\tilde{P}^2 + B^2 \tilde{\Phi}^2}{2} + \frac{B}{2} (\psi_f \bar{\psi}_f - \bar{\psi}_f \psi_f) \tag{3.33}$$

with $B = \kappa L^2$ (to establish its relationship to (3.32), one should rename $\bar{\psi}_2 \leftrightarrow \psi_2$). In spite of the presence of potential (such that the configuration space $C_j, \tilde{\Phi}$ has not the meaning of *moduli* space), the characteristic excitation energies associated with $\tilde{\Phi}$ are of the same order as the energies associated with C_j , and to ignore $\tilde{\Phi}$ would be inconsistent.

For positive k , the index of the Hamiltonian (3.33) is given, again, by the 2-dimensional flux of magnetic field as in (2.13). But, in contrast to what happens in $\mathcal{N} = 1$ theory, it does not change sign for negative k . We derive for $SU(2)$

$$I_{\text{pre-Weyl}}^{\mathcal{N}=2} = 2|k|. \tag{3.34}$$

When imposing the condition of Weyl-invariance we are left with only $|k| + 1$ bosonic vacuum states.

Loop corrections do not change this result because, for $\mathcal{N} = 2$ theory, fermion and gluon loop contributions in the renormalization of k and in the magnetic field flux cancel out. A generalization to higher N is straightforward. The final result for the index coincides with (2.44), but without the factor $(-1)^{N-1}$. When $k \neq 0$, supersymmetry is unbroken.

If $k = 0$, the pure $\mathcal{N} = 2$ $3d$ SYM field theory is known to involve the “runaway” vacuum: the degeneracy of the vacuum valley is lifted by a superpotential generated by instantons such that the minimum of energy is achieved at infinitely large field values [33, 34]. It would be interesting to understand how this is reflected in the finite-volume version of the theory.

¹⁴This is in a conservative convention meaning that the system involves two *complex* conserved supercharges. Most experts in SQM prefer now to define \mathcal{N} as the number of real supercharges, but, bearing in mind that the theory with a single real supercharge is in fact *not* supersymmetric (does not involve a double spectral degeneracy), this devaluation of \mathcal{N} does not seem to us to be a convenient innovation.

$\mathcal{N} = 3$. The Lagrangian of $\mathcal{N} = 3$ theory, involves four fermions, $\psi_{f=1,2,3}$ and χ . The fermion χ has the mass of opposite sign compared to that of ψ_f . Besides, there are three real adjoint scalars Φ_f . The effective Hamiltonian (for SU(2) theory) has the form

$$\frac{L^2}{g^2}H = \frac{1}{2} \left(P_j - \frac{B}{2} \epsilon_{jk} C_k \right)^2 + \frac{\tilde{P}_f^2 + B^2 \tilde{\Phi}_f^2}{2} + \frac{B}{2} (\psi_f \bar{\psi}_f - \bar{\psi}_f \psi_f) - \frac{B}{2} (\chi \bar{\chi} - \bar{\chi} \chi) \quad (3.35)$$

The pre-Weyl index of this Hamiltonian is

$$I_{\text{pre-Weyl}}^{\mathcal{N}=3} = -2|k| \quad (3.36)$$

(the vacuum states involve the factor χ and have negative fermion charge). After imposing the Weyl invariance condition, only $|k|+1$ fermion vacuum states are left. Loop corrections do not modify this value, because positive (at positive k) shift of the magnetic flux due to gluon and χ loops cancels its negative shift due to ψ_f loops. The final result for the index with arbitrary N, k coincides up to a sign¹⁵ with the result in $\mathcal{N} = 2$ theory.

4 Discussion

A paradox. The problem of calculating the index (i.e. the number of vacuum states) in SYMCS theory is closely related to the problem of calculating the total number of states in the topological pure CS theory. Indeed, the canonical momenta derived from the Lagrangian

$$\mathcal{L}_{CS} = -\kappa \epsilon_{jk} \left[\text{Tr} \{ A_j \dot{A}_k \} + \text{Tr} \{ A_0 F_{jk} \} \right] \quad (4.1)$$

are

$$\Pi_j^a = \frac{\kappa}{2} \epsilon_{jk} A_k^a. \quad (4.2)$$

There is no time derivatives in the r.h.s., and we obtain thereby a set of second class (they do not all commute) constraints $G_j^a = \Pi_j^a - (\kappa/2) \epsilon_{jk} A_k^a = 0$ supplemented by the gauge constraints $F_{jk}^a = 0$. When quantizing, we have to replace, as usual $\Pi_j^a \rightarrow -i\delta/(\delta A_j^a)$ and impose the conditions

$$(\hat{G}_1^a + i\hat{G}_2^a)\Psi[A] = 0 \quad \text{or} \quad (\hat{G}_1^a - i\hat{G}_2^a)\Psi[A] = 0 \quad (4.3)$$

on the wave functions (one has to use a kind of Gupta-Bleiler quantization procedure here and implement only a *half* of G_j^a [35]).

On the other hand, it is not difficult to see that the supercharges of the SYMCS model (2.1) can be represented as

$$\begin{aligned} Q &= \frac{g^2}{2} \int d^2x \lambda_-^a G_{1-i2}^a, \\ \bar{Q} &= \frac{g^2}{2} \int d^2x \lambda_+^a G_{1+i2}^a \end{aligned} \quad (4.4)$$

¹⁵An overall sign of the index is, of course, a convention.

($\lambda_{\pm} \equiv \lambda_1 \pm i\lambda_2$). For positive k , ground states are bosonic and are annihilated by \bar{Q} in a trivial way. The condition $Q|\Psi\rangle = 0$ is equivalent to the set of constraints $\hat{G}_{1-i2}^a \Psi = 0$. For negative k , the condition $\bar{Q}|\Psi\rangle = 0$ is equivalent to the set of constraints $\hat{G}_{1+i2}^a \Psi = 0$.

It is not surprising therefore that our results [like (1.3)] for the tree-level index coincide with those derived earlier for pure CS theories. A conventional way to count the number of states in CS theories is to use their relationship [26] to 2d WZNW theories [36–39], the correspondance between WZNW theories and conformal theories, and the full conformal machinery [40]. But it can also be done by resolving directly the constraints (4.3) [41–44].

The SYMCS theory in question involves, however, also the supersymmetric YM part in the action, which might affect the index. Witten suggested that only the fermion part of this action does. His logic was the following [45]. Let us integrate over the fermions (after which the effective coupling is shifted according to $k \rightarrow k - c_V/2$) and obtain a purely bosonic theory. At low energies, this is the pure CS theory. It involves also the YM term and still higher derivative terms. Though these terms are irrelevant at low energies in a sense that the dynamics depends exclusively on the lowest dimension CS term in the Wilsonian effective Lagrangian, they can affect the coefficient of this term. However, in contrast to what happens, e.g., in a conventional $4d$ YM theory supplemented by a higher-derivative term $\sim \text{Tr}\{FD^2F\}/M^2$, where the effective low-energy YM coupling constant involves a logarithmic dependence of M , in this case, renormalization of κ does not depend on the coefficient $1/g^2$ of the YM term. Moreover, it does not depend on the *form* of the higher derivative terms, the result

$$k_{\text{bosonic}} = k_{\text{tree}} + c_V \tag{4.5}$$

bein robust with respect to these details. One can therefore consider this shift as an immanent feature of pure CS theory, with quantum effects taken into account. Indeed, the shift $k \rightarrow k + c_V$ appears in many exact formulae, like those for the energy-momentum tensor or Wilson loops expectation values, etc [26, 40]. On the other hand, this shift does not show up in the formula (1.3) for the number of states in CS theory (on the conformal side, it is the number of so called *conformal blocks*). Thus, concludes Witten, one should not take into account the renormalization of k due to bosonic loops. The known pattern of the exact solution of pure CS theory displays that bosonic loops are present, indeed, they affect κ and other quantities, but do not affect the number of states.

This reasoning looks OK. Besides, supersymmetry breaking at small k that it implies follows also from heuristically suggestive D -brane constructions [46, 47]. However, it is somewhat formal, relying heavily on the correspondence with conformal theories and exact results there. It does not give a clear physical picture of what really happens. Our method, consisting in explicit evaluation of the low-energy Hamiltonian in finite volume, gives such physical picture, but, surprisingly, the result of this analysis is different - bosonic loops *do* contribute to the index. This is an obvious paradox, which should be resolved somehow. Being unable now to make essential comments on the conformal way of reasoning, let us try to see whether one can modify *our* prediction following from the analysis of the effective finite-volume Hamiltonian.¹⁶

¹⁶This analysis is done in the region $g^2L \ll 1$, while the pure CS dynamics refers to the limit $g^2L \gg 1$.

One of the places in our proof, which *might* involve a loophole¹⁷ is the following. In appendix, we evaluated accurately the contribution of the fermion loop into the effective finite-volume BO Hamiltonian and confirmed that, as far as the expression for the induced magnetic field is concerned, the simple rules (3.17) work and, as a result, the flux of induced magnetic field is rigidly connected with renormalization of κ in infinite volume. This generalizes to bosonic loops if the latter are evaluated with the simplistic infrared regularization (3.16). It is difficult to imagine that the results may depend here on the regularization, but we cannot logically exclude now that, when accurate calculations are done in full SYMCS theory, and the extra terms in the action involve a couple of derivatives, the recipe (3.17) breaks down for bosonic loops. As a result, the flux of the induced magnetic field might be zero in spite of the nonvanishing renormalization of κ in the infinite-volume theory... To patch the hole, such an accurate calculation should be performed.

Another potential source of trouble is the fact that the BO approximation we use breaks down near some special points (fixed points of Weyl transformation) on the flat connection space [see the footnote 10]. This allows one to suspect the presence of some extra contributions in the index that we did not take into account. They might be (i) extra one-loop contributions and/or (ii) higher-loop contributions. Speaking of the latter, we have not rigorously excluded their presence for higher-rank groups [see the footnote 11], but, for SU(2), we did. (We remind: for SU(2), higher-loop contributions (if any) should involve inverse powers of k , this is not allowed at large k and hence the coefficient should be zero for any k). Speaking of the former, we analyzed accurately only a possible correction to the index due to renormalization of the metric and showed that it vanishes. However, there are many other corrections with four and more derivatives in the Lagrangian. As the index is a topological quantity, it is difficult to imagine that something else besides the (generalized) flux might contribute, but, again, it is not a mathematical theorem. There is a logical possibility that something queer, like higher-derivative terms, contributes to the index and this cancels the contribution of the flux induced by the bosonic loop.

The third possibility is the following. The Weyl group W has a natural Z_2 gradation involving even and odd elements. (For example, for SU(N), the Weyl group S_N involves even and odd permutations.) Imagine now that, for some reason, we should have picked up not Weyl invariant wave functions, but rather *Weyl antiinvariant* ones, i.e. the functions that are invariant under the action of even elements of W and change sign under the action of odd elements [41, 48]. Weyl antiinvariant wave functions can be represented as [cf. eq. (2.41)]

$$\Psi = \sum_{\hat{x} \in W} \hat{x} \Psi_{\mathbf{w}_n} P(x), \tag{4.6}$$

where $P(x) = \pm 1$ depending on whether the element x is even or odd.

It is not difficult to see then that the number of such Weyl antiinvariant states is equal to the number of points in the Weyl alcove *excluding* the points on its boundary. Indeed,

The usual wisdom tells, however, that the number of vacuum states should not depend on L .

¹⁷It goes without saying that there are *a lot* of loopholes if mathematical standards of rigour are applied. This concerns this paper, the paper [1], and, basically, all other papers on quantum field theory published in physics journals.

the latter are invariant with respect to a Z_2 subgroup of the Weyl group that involves the unity and some odd element of W of second order. [For the Weyl alcove of $SU(3)$ depicted in figure 2, this odd element is one of the permutations (12), (13), or (23) — see the footnote 4]. A glance at figure 2 tells that, for $k = 4$, there are only three points in the interior of the alcove. And this coincides with the number of points in the Weyl alcove for $k = 1$ counted in the conventional way (with inclusion of the boundary). One can note now that $1 = 4 - 3$, i.e., for $k = 4$, *the number of Weyl antiinvariant states for the $SU(3)$ effective Hamiltonian that takes into account the contribution of the gluon loops bringing about the shift $k \rightarrow k + 3$ is equal to the number of Weyl invariant states for the unshifted Hamiltonian.* A pure geometric inspection of larger triangles and multidimensional tetrahedrons displays that this pattern also holds for all k and N . For higher unitary groups, Weyl antiinvariance condition “unwinds” the gluon loop shift $k \rightarrow k + N$. We enjoyed observing this also for symplectic groups $Sp(2r)$ (where counting the points in the interior of the alcove unwinds the shift $k \rightarrow k + c_V = k + r + 1$) and for G_2 . Indeed, looking at the Weyl alcove for G_2 in figure 2, one observes that, for $k = 4$, only one state is left, and this corresponds to unwinding $k \rightarrow k - 4 = k - c_V[G_2]$. This theorem can be proven for an arbitrary group [41, 48]: Weyl antiinvariance requirement amounts always to the negative shift $k \rightarrow k - c_V$ that compensates the shift (4.5) due to gluon loops. In other words, by imposing Weyl antiinvariance requirement on the wave functions, we would reproduce Witten’s result. The problem is, however, that we do not see a reason to do that in the framework of our approach.

Going down onto the quotient. We calculated the index by studying the dynamics on the moduli space of all (not necessarily gauge equivalent) Abelian flat connections and imposing then the Weyl invariance condition on the quantum states. The advantage of this approach is simplicity of such moduli space - just the product $T \times T$ of two copies of the maximal torus of the gauge group. An alternative approach is to factorize $[T \times T]$ over the Weyl group W at the classical level and study the dynamics on the (more complicated) moduli space thus obtained. This is the way the index was calculated in section 3 of ref. [1]. This calculation uses a bunch of nontrivial mathematical facts, which we have understood (with the help of colleagues mathematicians) only partially. Still, we have decided to make here few explanatory comments, which might be useful for an unsophisticated physicist reader who shares with the author his mathematical illiteracy.

The first nontrivial fact is that the moduli space $\mathcal{M} = [T^{\max} \times T^{\max}]/W$ of gauge equivalent classes of flat $SU(N)$ connections on T^2 is $\mathbb{C}P^{N-1}$ [49]. In fact, the proof of a similar statement for *symplectic* groups (that $\mathcal{M}_{Sp(2r)} = [T_{Sp(2r)}^{\max} \times T_{Sp(2r)}^{\max}]/W_{Sp(2r)} = \mathbb{C}P^r$) is much simpler. Consider first $Sp(2) = SU(2)$. In this case, T^{\max} is just a circle and the Weyl group is Z_2 . Then \mathcal{M} is a set of points (x, y) identified by periodicity $(x, y) \equiv (x + 1, y) \equiv (x, y + 1)$ and by simultaneous Weyl reflection $(x, y) \equiv (-x, -y)$. This gives a triangle with glued edges depicted in figure 5: the points symmetric with respect to the middles of the edges are identified. An “envelope” thus obtained is topologically equivalent to S^2 .

For $Sp(2r)$, T^{\max} is a direct product of r such circles. The Weyl group has $2^r \cdot r!$ elements

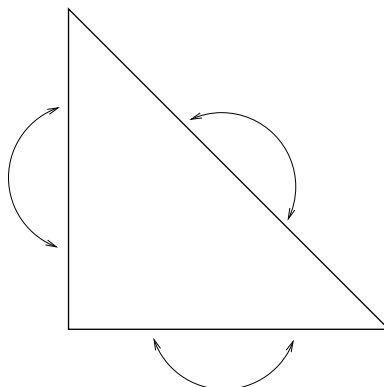


Figure 5. $T^2/Z_2 = S^2$.

including reflections on each such circle and their permutations. It is clear then that

$$\mathcal{M}_{\text{Sp}(2r)} = \frac{\frac{S^1 \times S^1}{Z_2} \times \dots \times \frac{S^1 \times S^1}{Z_2}}{S_r} = \frac{S^2 \times \dots \times S^2}{S_r} \tag{4.7}$$

with r S^2 factors. Introduce a complex structure on each factor. A point in \mathcal{M} can be represented as an unordered set of r complex numbers (z_1, \dots, z_r) . One can represent this set as a set of roots of some polynomial of order r and map the set of all such sets to the set of all complex polynomials of degree r factorized over multiplication by a complex factor λ . Bearing in mind that a polynomial of degree r is represented by a set of $r + 1$ its coefficients, we derive $\mathcal{M} \equiv \mathbb{C}\mathbb{P}^r$, as promised.

Let us go over to unitary groups. The maximal torus of $\text{SU}(N)$ is a set of matrices $\text{diag}(e^{i\alpha_1}, \dots, e^{i\alpha_N})$ with $\sum_{l=1}^N \alpha_l = 0$. The product of two such tori can be represented as the space of sets $\{z_1, \dots, z_N\}$, where $z_l = \alpha_l + i\beta_l$ belongs to T^2 [$\alpha_l, \beta_l \in (0, 2\pi)$] and $\sum_l z_l = 0$. The Weyl group permutes z_l . Thus, $\mathcal{M}_{\text{SU}(N)}$ is a set of unordered N -tuples on T^2 that add to zero. Similarly to what was done in the case of $\text{Sp}(2r)$, such N -tuple can be represented by meromorphic elliptic functions defined on T^2 that have simple zeroes at N selected points and the pole of N -th order at zero.¹⁸ There is a one-to-one correspondence between these N -tuples and the classes of such functions $F(z)$ with identification $F(z) \equiv \lambda F(z)$. It is a known mathematical fact that the space of all such elliptic functions is a vector space of complex dimension N . Bearing in mind the identification with respect to multiplication by λ , the projective space $\mathbb{C}\mathbb{P}^{N-1}$ arises.

Witten then relates the index to a certain topological invariant of $\mathbb{C}\mathbb{P}^{N-1}$ associated with the presence of extra Abelian gauge field on this manifold. We do not want to go into further details (bearing especially in mind that we do not understand this question completely), but we would like to mention here that an *elementary* calculation of this invariant¹⁹ was performed in [50]. The number of the states depends at the tree level on

¹⁸If one of the coordinates z_l is zero, the pole is of order $N - 1$, if two of them are zero, the pole is of order $N - 2$, etc.

¹⁹It uses the explicit form of the metric on $\mathbb{C}\mathbb{P}^{N-1}$ and directly counts the normalized states annihilated by the properly chosen second class constraints [cf. eq. (4.3)].

the parameter k and is given by (1.3). As was discussed above, Witten suggests that k should be shifted due to fermion loops to $k - c_V/2$, while our analysis suggests the positive shift $k \rightarrow k + c_V/2$.

Strings and walls. The last rather confusive issue that we want to discuss here are the arguments of ref. [9] relating the Witten index in 3d SYMCS theory at the level k to the multiplicity of *domain walls* in $\mathcal{N} = 1$ 4d SYM theory with $SU(k)$ gauge group. The standard reasoning displaying the appearance of these walls is the following. The tree Lagrangian of this theory involves axial $U(1)$ symmetry. Like in QCD, this symmetry is anomalous, being broken by instantons. An instanton possesses $2k$ gluino zero modes, the 't Hooft determinant involves the factor $\sim \lambda^{2k}$, and that means that the discrete Z_{2k} subgroup of the axial $U(1)$ group remains unbroken. This discrete symmetry is further *spontaneously* broken down to Z_2 , with the phase of the gluino condensate,

$$\langle \lambda\lambda \rangle_l = \Sigma e^{2\pi i l/k}, \quad l = 1, \dots, k, \tag{4.8}$$

playing the role of the order parameter of this breaking [51, 52]. This implies the existence of k distinct vacua and domain walls separating them [53]. There are domain walls of different kind interpolating between the vacua with phase differences $p = l - l' = 1, \dots, k - 1$. For given k, p , there are several different domain walls, their multiplicity being evaluated (by brane methods) in [9] as

$$\#_{\text{walls}}(k, p) = \binom{k}{p}. \tag{4.9}$$

Based on certain D -brane and duality arguments, Acharya and Vafa relate this number to the number of vacuum states in $\mathcal{N} = 2$ 3d SYMCS $SU(p)$ theory at level k (the main idea is that the effective theory on the domain wall *is* in fact a 3d SYMCS theory). And this relation holds if using the $\mathcal{N} = 2$ generalization [46, 47]

$$I = \binom{k-1}{p-1} \tag{4.10}$$

of original Witten's formula (1.1) and *not* our formula (1.5)!²⁰

Even though this agreement looks to be rather remarkable, it is not conclusive enough in the framework of our restricted rules of the game, where only pure field theory reasoning is admissible, and duality arguments are not.

SYM theory is a theory with strong coupling, and it is difficult to perform a honest study of domain walls there and count their number. The only “braneless” way to do it is to modify the theory by adding there extra fundamental matter multiplets [54]. If the matter fields are light enough, one can integrate over all other degrees of freedom to obtain

²⁰The exact agreement between (4.9) and (4.10) is achieved, if taking into account the presence of an extra $U(1)$ factor in the effective theory. As a result, the number of walls is given by the $SU(p)$ index (4.10) multiplied by the factor k/p [9], which coincides with (4.9).

the effective ADS Lagrangian [55, 56]. It is a Lagrangian of Wess-Zumino type, with superpotential involving a special instanton-generated term. It has, indeed, k different vacua, and the classical solutions describing different domain walls can be explicitly constructed and counted, their number being given by eq. (4.9). But it is not evident that the number of walls in the pure SYM theory should be the same. The latter can be achieved from the weakly coupled theory with light matter fields by increasing their mass. If the mass becomes very large, these fields decouple. *If* the number of walls is not changed under such deformation, the counting (4.9) works also for pure SYM.

This condition seems not to be fulfilled, however. In refs. [57–62], this very question was studied in the framework of the Taylor-Veneziano-Yankielowicz Lagrangian [63] involving on top of matter superfields also the chiral superfield S , which takes effectively into account the gluon and gluino degrees of freedom.²¹

This study has revealed that, when the mass is increased, a chain of phase transitions (or rather bifurcation points) occur such that most of the walls disappear at large masses.²² For example, for $k = 2$, both walls disappear. For $k = 3$ only two “tenacious” walls out of three are left, etc. In other words, the counting (4.9) works for the ADS Lagrangian, but probably does not work for SYM theory. Bearing this in mind, the agreement between eq. (4.9), which does not count correctly the number of walls, and eq. (4.10), which is not a correct value of the $3d$ index, looks really mysterious...

We are indebted to E. Witten for profound illuminating discussions and many valuable remarks. We acknowledge also useful discussions with B. Feigin, A. Gorsky, E. Ivanov, A. Pajitnov, V. Rubtsov, and S. Theisen.

A Magnetic flux induced by loops.

SU(2). The formula (3.18) for the induced magnetic field on the dual torus is very natural and follows *almost* directly from (3.7) and the rules (3.17). However, this simple correspondence is formulated for the magnetic field \mathcal{B} , while the bosonic part of the effective Lagrangian involves vector-potential \mathcal{A} rather than \mathcal{B} , and the formula for \mathcal{L}_{eff} is more complicated. Because of this and because of the controversy concerning the bosonic loop contribution, we decided to make here some explanatory comments.

²¹The TVY Lagrangian has correct symmetry properties, but it is not a Wilsonian effective Lagrangian, and one cannot be sure that the results obtained in the TVY framework hold also for the full SYM theory. Anyway, it is the *only* known to us field theory method to study domain walls in strongly coupled regime.

²²Disappearance of walls in the pure SYM theory might be associated the fact that the standard interpretation with spontaneous breaking of discrete chiral symmetry is actually questionable. The pure SYM theory, unlike a theory with fundamental matter, admits not only instanton Euclidean configurations with integer topological charge, but also configurations with fractional charge. Such configurations (’t Hooft torons [11–13]) are certainly there in a theory defined on a spatial torus with twisted boundary conditions [cf. a remark after eq. (2.5)]. And then the phase of the fermion condensate $\langle\lambda\lambda\rangle$ in eq. (4.8) is not an order parameter, but plays the same role as the vacuum angle θ - it should be chosen once for ever, and there are no physical walls connecting vacua with different θ . See refs. [54, 62] for discussion of this controversial issue.

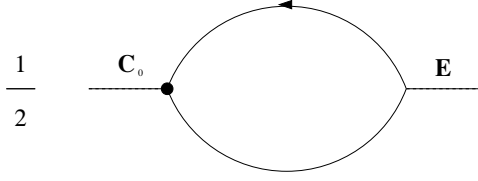


Figure 6. EC contribution to \mathcal{L}^{eff} .

Consider the fermion contribution. To find the correction to the effective Lagrangian, we have to evaluate the fermion loop in finite volume in external background field

$$\mathbf{C}(\tau) = \mathbf{C}_0 + \mathbf{E}\tau, \quad (\text{A.1})$$

where τ is Euclidean time (to evaluate the graphs, we are going to perform, as usual, Wick rotation, etc.). For any multileg graph in the expansion of $\text{Tr} \ln(i\mathcal{D} - m)$, we have thus to insert such $\mathbf{C}(\tau)$ in each leg and keep only *linear* in \mathbf{E} terms.²³ The way the calculations are done here [64, 65] is very much parallel to the technique of calculations in background nonperturbative Euclidean $4d$ fields developed in [66] and based on the gauge choice [67–70] $(x - x_0)_\mu A_\mu = 0$ leading to

$$A_\mu(x) = \int_0^1 ds (x - x_0)_\nu F_{\nu\mu}[x_0 + s(x - x_0)] = \frac{1}{2}(x - x_0)_\nu F_{\nu\mu} + \frac{1}{3}(x - x_0)_\nu (x - x_0)_\alpha \mathcal{D}_\alpha F_{\nu\mu} + \dots \quad (\text{A.2})$$

This gauge is not translationally invariant, but the physical results must not (and do not) depend on the choice of the “fixed point” x_0 . This choice is in our hands. Likewise, the point τ_0 at which the linear term in the decomposition (A.1) vanishes, is a convention. We will choose $\tau_0 = 0$ coinciding with the position of one of the legs in the graphs.

The graphs with an odd number of legs vanish, and we have to consider only the graphs with even number of legs. There is only one two-leg graph depicted in figure 6. The factor $1/2$ coming from the expansion of $\ln(i\mathcal{D} - m)$ is displayed. The blob marks the “fixed point” - the vertex at $\tau = 0$. At this point, one can plug only the constant part of $\mathbf{C}(\tau)$, the linear term vanishes there. There are three nonzero 4-leg graphs depicted in figure 7. The expansion factors $1/4$ are displayed.

The EC contribution to the effective Lagrangian is proportional to

$$\mathcal{L}_{\text{figure 6}}^{\text{eff}} \propto \frac{1}{2} \sum_{\mathbf{n}} C_j E_k \int \frac{d\epsilon}{2\pi} \text{Tr} \left\{ \gamma_j G \gamma_k \frac{\partial G}{\partial \epsilon} \right\}, \quad (\text{A.3})$$

where $G(\epsilon, 2\pi\mathbf{n}/L)$ is fermion Green’s function, and we took care to display explicitly the factor $1/2$ coming from the expansion of the logarithm, but not other numerical factors. We have also suppressed from now on the subscript $_0$ for \mathbf{C} . For the graphs in figure 7, the

²³We are hunting for the structure $\sim \dot{\mathbf{C}}\mathcal{A}(\mathbf{C})$ in \mathcal{L}^{eff} . The quadratic in $\dot{\mathbf{C}}$ terms give corrections to the metric, there are also cubic and all higher-order terms, but they do not affect the index, as was discussed in section 3.

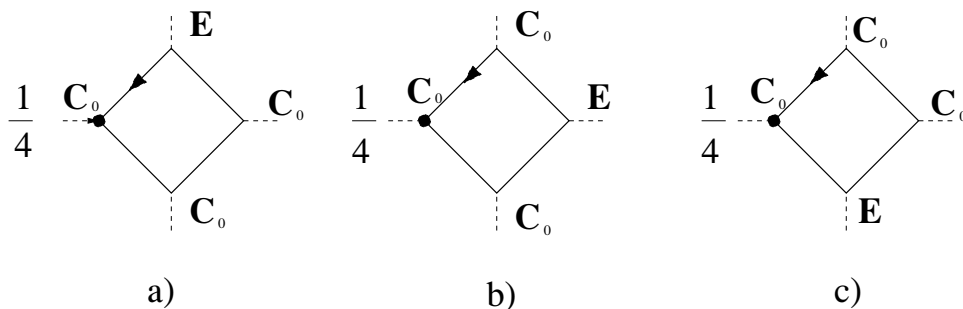


Figure 7. *ECCC* contribution to \mathcal{L}^{eff} .

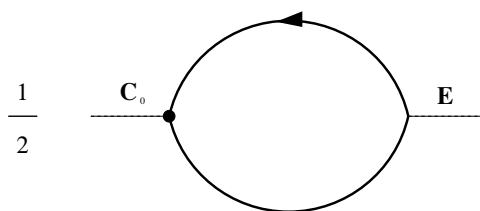


Figure 8. Two-leg graph with thick Green's functions.

factor τ multiplying E_k goes over into the operator $\partial/(\partial\epsilon)$ acting on all Green's functions between the point where $E_k\tau$ is inserted and the blob in, say, the clockwise direction [66]. For example, the graph in figure 7b gives

$$\mathcal{L}_{\text{figure 7b}}^{\text{eff}} \propto \frac{1}{4} \sum_{\mathbf{n}} C_j C_l E_k C_p \int \frac{d\epsilon}{2\pi} \text{Tr} \left\{ \gamma_j G \gamma_l G \gamma_k \frac{\partial}{\partial\epsilon} (G \gamma_p G) \right\}, \quad (\text{A.4})$$

Again, only the expansion factor 1/4 is explicitly displayed. The 6-leg graphs $\sim EC^5$ involve the expansion factor 1/6, etc.

To resum all such contributions, let us compare the expressions (A.4) etc. to the corresponding terms in the expansion of the graph in figure 8, where the thick lines stand for Green's functions in the *constant* background \mathbf{C} . These expansion terms have the same structure as in eq. (A.4), but the coefficients 1/4, 1/6, etc are replaced by a universal combinatorial prefactor 1/2. To find \mathcal{L}^{eff} to any order in \mathbf{C} , we have thus to take the expression

$$m\epsilon_{jk} C_j E_k \sum_{\mathbf{n}} \int_{-\infty}^{\infty} \frac{d\epsilon}{2\pi} \frac{1}{\left[\epsilon^2 + \left(\frac{2\pi\mathbf{n}}{L} - \mathbf{C} \right)^2 + m^2 \right]^2} \quad (\text{A.5})$$

for the graph in figure 8, expand it in \mathbf{C} , and divide the $2p$ -th term of this expansion by $p + 1$. We obtain

$$\mathcal{L}_{EC\dots C}^{\text{eff}} = -E_k \mathcal{A}_k(\mathbf{C}) \quad (\text{A.6})$$

with

$$\mathcal{A}_k(\mathbf{C}) = -2m\epsilon_{jk} C_j \sum_{\mathbf{n}} \int_0^1 ds \int_{-\infty}^{\infty} \frac{d\epsilon}{2\pi} \frac{1}{\left[\epsilon^2 + \left(\frac{2\pi\mathbf{n}}{L} - s\mathbf{C} \right)^2 + m^2 \right]^2}. \quad (\text{A.7})$$

This is nothing but Fock-Schwinger gauge representation (A.2) for the vector potential via magnetic field. We thus arrive at the result (3.18) for $\Delta\mathcal{B}^F(\mathbf{C})$.

An *explicit* evaluation of $\Delta\mathcal{B}^B(\mathbf{C})$ in SYMCS theory is technically more involved. In the background field method, there are two types of vertices with single and double external field insertions. In addition, the expression for the gluon propagator is more complicated. What we can easily do, however, is to calculate the induced magnetic field in the model where the YM term in the action is replaced by the gluon mass term (3.16). Then the action is exactly the same as for the fermions and the results are also exactly the same up to the factor -2,

$$\Delta\mathcal{B}^B(\mathbf{C}) = -2\Delta\mathcal{B}^F(\mathbf{C}) . \tag{A.8}$$

In view of the controversy discussed in the paper (whether gluon loops are relevant or not), it would make sense to perform this calculation with the “honest” YM action. It is difficult to imagine, however, that some other result than (A.8) would be obtained. At $\mathbf{C} = 0$, the equality (A.8) is manifest with any regularization.

SU(3). For an arbitrary group, the loop-corrected expression for the generalized flux (2.17) is obtained from (2.18) by substituting $k \rightarrow k + c_V/2$. Let us show how this comes about in the simplest nontrivial SU(3) case. Consider the fermion contribution. The charged [with respect to the background $(\mathbf{A}^3, \mathbf{A}^8)$] fermions circulating in the loops, like in figures 6, 7, can be directed along three root vectors of SU(3), $\psi^{1\pm i2}$, $\psi^{4\pm i5}$, and $\psi^{6\pm i7}$. They give contributions depending on the roots \mathbf{A}^3 , $(-\mathbf{A}^3 + \sqrt{3}\mathbf{A}^8)/2$ and $-(\mathbf{A}^3\sqrt{3} + \mathbf{A}^8)/2$, correspondingly.

The total 1-loop contribution to the effective Lagrangian is expressed as

$$\mathcal{L}^{\text{eff}} = -E_k^3 \mathcal{A}_k^3 - E_k^8 \mathcal{A}_k^8 \tag{A.9}$$

with

$$\begin{aligned} \mathcal{A}_k^3 &= \mathcal{A}_k(\mathbf{A}^3) - \frac{1}{2}\mathcal{A}_k\left(\frac{-\mathbf{A}^3 + \sqrt{3}\mathbf{A}^8}{2}\right) - \frac{1}{2}\mathcal{A}_k\left(-\frac{\mathbf{A}^3 + \sqrt{3}\mathbf{A}^8}{2}\right) \\ \mathcal{A}_k^8 &= \frac{\sqrt{3}}{2}\left[\mathcal{A}_k\left(\frac{-\mathbf{A}^3 + \sqrt{3}\mathbf{A}^8}{2}\right) - \mathcal{A}_k\left(-\frac{\mathbf{A}^3 + \sqrt{3}\mathbf{A}^8}{2}\right)\right], \end{aligned} \tag{A.10}$$

where a universal function $\mathcal{A}_k(\mathbf{C})$ is taken from (A.7). Let us add now the contribution from gluon loops (this amounts to changing sign of \mathcal{A}_k) and calculate \mathcal{B}^{ab} and its determinant. We obtain

$$\begin{aligned} \det \|\mathcal{B}^{ab}\| &= (\kappa L^2)^2 + \kappa L^2 \left[\mathcal{B}(\mathbf{A}^3) + \mathcal{B}\left(\frac{-\mathbf{A}^3 + \sqrt{3}\mathbf{A}^8}{2}\right) + \mathcal{B}\left(-\frac{\mathbf{A}^3 + \sqrt{3}\mathbf{A}^8}{2}\right) \right] \\ &+ \frac{3}{4} \left[\mathcal{B}(\mathbf{A}^3)\mathcal{B}\left(\frac{-\mathbf{A}^3 + \sqrt{3}\mathbf{A}^8}{2}\right) + \mathcal{B}(\mathbf{A}^3)\mathcal{B}\left(-\frac{\mathbf{A}^3 + \sqrt{3}\mathbf{A}^8}{2}\right) + \right. \\ &\left. \mathcal{B}\left(\frac{-\mathbf{A}^3 + \sqrt{3}\mathbf{A}^8}{2}\right)\mathcal{B}\left(-\frac{\mathbf{A}^3 + \sqrt{3}\mathbf{A}^8}{2}\right) \right] \end{aligned} \tag{A.11}$$

with

$$\mathcal{B}(\mathbf{C}) = 2m \int_{-\infty}^{\infty} \frac{d\epsilon}{2\pi} \sum_{\mathbf{n}} \frac{1}{\left[\epsilon^2 + \left(\frac{2\pi\mathbf{n}}{L} - \mathbf{C} \right)^2 + m^2 \right]^2}. \quad (\text{A.12})$$

Integrating (A.11) over $d\mathbf{A}^3 d\mathbf{A}^8$ within $T_{\max}[\text{SU}(3)] \times T_{\max}[\text{SU}(3)]$ gives $3(k+3/2)^2$.

Open Access. This article is distributed under the terms of the Creative Commons Attribution Noncommercial License which permits any noncommercial use, distribution, and reproduction in any medium, provided the original author(s) and source are credited.

References

- [1] E. Witten, *Supersymmetric index of three-dimensional gauge theory*, in *The many faces of the superworld*, M.A. Shifman ed., pg. 156 [hep-th/9903005](#) [SPIRES].
- [2] J.M. Maldacena, *The large- N limit of superconformal field theories and supergravity*, *Adv. Theor. Math. Phys.* **2** (1998) 231 [*Int. J. Theor. Phys.* **38** (1999) 1113] [hep-th/9711200](#) [SPIRES].
- [3] S.S. Gubser, I.R. Klebanov and A.M. Polyakov, *Gauge theory correlators from non-critical string theory*, *Phys. Lett.* **B 428** (1998) 105 [hep-th/9802109](#) [SPIRES].
- [4] J. Bagger and N. Lambert, *Gauge symmetry and supersymmetry of multiple M2-branes*, *Phys. Rev.* **D 77** (2008) 065008 [[arXiv:0711.0955](#)] [SPIRES].
- [5] O. Aharony, O. Bergman, D.L. Jafferis and J. Maldacena, *$N=6$ superconformal Chern-Simons-matter theories, M2-branes and their gravity duals*, *JHEP* **10** (2008) 091 [[arXiv:0806.1218](#)] [SPIRES].
- [6] E. Witten, *Constraints on supersymmetry breaking*, *Nucl. Phys.* **B 202** (1982) 253 [SPIRES].
- [7] R.D. Pisarski and S. Rao, *Topologically massive chromodynamics in the perturbative regime*, *Phys. Rev.* **D 32** (1985) 2081 [SPIRES].
- [8] H.-C. Kao, K.-M. Lee and T. Lee, *The Chern-Simons coefficient in supersymmetric Yang-Mills Chern-Simons theories*, *Phys. Lett.* **B 373** (1996) 94 [hep-th/9506170](#) [SPIRES].
- [9] B.S. Acharya and C. Vafa, *On domain walls of $N = 1$ supersymmetric Yang-Mills in four dimensions*, [hep-th/0103011](#) [SPIRES].
- [10] G.V. Dunne, *Aspects of Chern-Simons theory*, [hep-th/9902115](#) [SPIRES].
- [11] G. 't Hooft, *On the phase transition towards permanent quark confinement*, *Nucl. Phys.* **B 138** (1978) 1 [SPIRES].
- [12] G. 't Hooft, *A property of electric and magnetic flux in nonabelian gauge theories*, *Nucl. Phys.* **B 153** (1979) 141 [SPIRES].
- [13] G. 't Hooft, *Topology of the gauge condition and new confinement phases in nonabelian gauge theories*, *Nucl. Phys.* **B 190** (1981) 455 [SPIRES].
- [14] L.D. Landau, *Diamagnetismus der Metalle*, *Zeit. Phys.* **64** (1930) 629.
- [15] S. Cecotti and L. Girardello, *Functional measure, topology and dynamical supersymmetry breaking*, *Phys. Lett.* **B 110** (1982) 39 [SPIRES].

- [16] B.A. Dubrovin, I.M. Krichever and S.P. Novikov, *The Schrödinger equation in a periodic field and Riemann surfaces*, *Dokl. Akad. Nauk SSSR* **229** (1976) 15.
- [17] B.A. Dubrovin and S.P. Novikov, *Zero modes in a periodic system of Aharonov-Bohm solenoids*, *Zh. Eksp. Teor. Fiz.* **79** (1980) 1006.
- [18] S. Deser, R. Jackiw and S. Templeton, *Topologically massive gauge theory*, *Ann. Phys.* **140** (1982) 372 [Erratum *ibid.* **185** (1988) 406] [*Ann. Phys.* **281** (2000) 409] [SPIRES].
- [19] H. Matsumoto, *Semiclassical asymptotics of eigenvalues for Schrödinger operators with magnetic fields*, *J. Funct. Anal.* **129** (1995) 168.
- [20] A.V. Smilga, *Quasiclassical expansion for $\text{Tr}\{(-1)^F e^{-\beta H}\}$* , *Commun. Math. Phys.* **230** (2002) 245 [hep-th/0110105] [SPIRES].
- [21] E.T. Akhmedov and A.V. Smilga, *On the relation between effective supersymmetric actions in different dimensions*, *Phys. Atom. Nucl.* **66** (2003) 2238 [*Yad. Fiz.* **66** (2003) 2290] [hep-th/0202027] [SPIRES].
- [22] A.V. Smilga, *Low-dimensional sisters of Seiberg-Witten effective theory*, in *From fields to strings. Vol. 1*, M.A. Shifman et al. eds., pg. 523 hep-th/0403294 [SPIRES].
- [23] A.V. Smilga and A. Vainshtein, *Background field calculations and nonrenormalization theorems in 4D supersymmetric gauge theories and their low-dimensional descendants*, *Nucl. Phys. B* **704** (2005) 445 [hep-th/0405142] [SPIRES].
- [24] A.J. Niemi and G.W. Semenoff, *Axial anomaly induced fermion fractionization and effective gauge theory actions in odd dimensional space-times*, *Phys. Rev. Lett.* **51** (1983) 2077 [SPIRES].
- [25] A.N. Redlich, *Parity violation and gauge noninvariance of the effective gauge field action in three-dimensions*, *Phys. Rev. D* **29** (1984) 2366 [SPIRES].
- [26] E. Witten, *Quantum field theory and the Jones polynomial*, *Commun. Math. Phys.* **121** (1989) 351 [SPIRES].
- [27] M.A. Shifman, *Four-dimension aspect of the perturbative renormalization in three-dimensional Chern-Simons theory*, *Nucl. Phys. B* **352** (1991) 87 [SPIRES].
- [28] A.V. Smilga, *Perturbative corrections to effective zero mode Hamiltonian in supersymmetric QED*, *Nucl. Phys. B* **291** (1987) 241 [SPIRES].
- [29] A.V. Smilga, *Born-Oppenheimer corrections to the effective zero-mode Hamiltonian in SYM theory*, *JHEP* **04** (2002) 054 [hep-th/0201048] [SPIRES].
- [30] A.V. Smilga, *Vacuum structure in the chiral supersymmetric quantum electrodynamics*, *Sov. Phys. JETP* **64** (1986) 8 [SPIRES].
- [31] B.Yu. Blok and A.V. Smilga, *Effective zero mode Hamiltonian in supersymmetric chiral non-Abelian gauge theories.*, *Nucl. Phys. B* **287** (1987) 589 [SPIRES].
- [32] M. de Crombrugghe and V. Rittenberg, *Supersymmetric quantum mechanics*, *Ann. Phys.* **151** (1983) 99 [SPIRES].
- [33] I. Affleck, J. Harvey and E. Witten, *Instantons and (super)symmetry breaking in (2+1) dimensions*, *Nucl. Phys. B* **206** (1982) 413 [SPIRES].

- [34] N.M. Davies, T.J. Hollowood, V.V. Khoze and M.P. Mattis, *Gluino condensate and magnetic monopoles in supersymmetric gluodynamics*, *Nucl. Phys. B* **559** (1999) 123 [[hep-th/9905015](#)] [[SPIRES](#)].
- [35] A.P. Balachandran, G. Marmo, B.S. Skagerstam and A. Stern, *Classical topology and quantum states*, World Scientific (1991).
- [36] J. Wess and B. Zumino, *Consequences of anomalous Ward identities*, *Phys. Lett. B* **37** (1971) 95 [[SPIRES](#)].
- [37] S.P. Novikov, *Multivalued functions and functionals. An analogue of the Morse theory*, *Sov. Math. Doklady* **24** (1981) 222.
- [38] S.P. Novikov, *Hamiltonian formalism and a multivalued analogue of Morse theory*, *Usp. Mat. Nauk* **37** (1982) 3.
- [39] E. Witten, *Nonabelian bosonization in two dimensions*, *Commun. Math. Phys.* **92** (1984) 455 [[SPIRES](#)].
- [40] M.A. Shifman, *ITEP lectures on particle physics and field theory. Vol.2*, World Scientific (1999), pg. 649 for a nice introductory review.
- [41] S. Elitzur, G.W. Moore, A. Schwimmer and N. Seiberg, *Remarks on the canonical quantization of the Chern-Simons-Witten theory*, *Nucl. Phys. B* **326** (1989) 108 [[SPIRES](#)].
- [42] J.M.F. Labastida and A.V. Ramallo, *Operator formalism for Chern-Simons theories*, *Phys. Lett. B* **227** (1989) 92 [[SPIRES](#)].
- [43] G.V. Dunne, R. Jackiw and C.A. Trugenberger, *Chern-Simons theory in the Schrödinger representation*, *Ann. Phys.* **194** (1989) 197 [[SPIRES](#)].
- [44] M.J. Crescimanno and S.A. Hotes, *Monopoles, modular invariance and Chern-Simons field theory*, *Nucl. Phys. B* **372** (1992) 683 [[SPIRES](#)].
- [45] E. Witten, private communication.
- [46] K. Ohta, *Supersymmetric index and s-rule for type IIB branes*, *JHEP* **10** (1999) 006 [[hep-th/9908120](#)] [[SPIRES](#)].
- [47] O. Bergman, A. Hanany, A. Karch and B. Kol, *Branes and supersymmetry breaking in 3D gauge theories*, *JHEP* **10** (1999) 036 [[hep-th/9908075](#)] [[SPIRES](#)].
- [48] S. Axelrod, S. Della Pietra and E. Witten, *Geometric quantization of Chern-Simons gauge theory*, *J. Diff. Geom.* **33** (1991) 787 [[SPIRES](#)].
- [49] R. Friedman, J. Morgan and E. Witten, *Vector bundles and F-theory*, *Commun. Math. Phys.* **187** (1997) 679 [[hep-th/9701162](#)] [[SPIRES](#)].
- [50] E. Ivanov, L. Mezincescu and P.K. Townsend, *Fuzzy CP(n-m) as a quantum superspace*, in *Symmetries in gravity in field theory*, Salamanca (2003) [hep-th/0311159](#) [[SPIRES](#)].
- [51] V.A. Novikov, M.A. Shifman, A.I. Vainshtein and V.I. Zakharov, *Instanton effects in supersymmetric theories*, *Nucl. Phys. B* **229** (1983) 407 [[SPIRES](#)].
- [52] G.C. Rossi and G. Veneziano, *Nonperturbative breakdown of the nonrenormalization theorem in supersymmetric QCD*, *Phys. Lett. B* **138** (1984) 195 [[SPIRES](#)].
- [53] G.R. Dvali and M.A. Shifman, *Domain walls in strongly coupled theories*, *Phys. Lett. B* **396** (1997) 64 [*Erratum ibid.* **B 407** (1997) 452] [[hep-th/9612128](#)] [[SPIRES](#)].
- [54] A. Kovner, M.A. Shifman and A.V. Smilga, *Domain walls in supersymmetric Yang-Mills theories*, *Phys. Rev. D* **56** (1997) 7978 [[hep-th/9706089](#)] [[SPIRES](#)].

- [55] I. Affleck, M. Dine and N. Seiberg, *Dynamical supersymmetry breaking in supersymmetric QCD*, *Nucl. Phys. B* **241** (1984) 493 [SPIRES].
- [56] I. Affleck, M. Dine and N. Seiberg, *Dynamical supersymmetry breaking in four-dimensions and its phenomenological implications*, *Nucl. Phys. B* **256** (1985) 557 [SPIRES].
- [57] A.V. Smilga and A. Veselov, *Complex Bogomolnyi-Prasad-Sommerfield domain walls and phase transition in mass in supersymmetric QCD*, *Phys. Rev. Lett.* **79** (1997) 4529 [[hep-th/9706217](#)] [SPIRES].
- [58] A.V. Smilga and A.I. Veselov, *Domain walls zoo in supersymmetric QCD*, *Nucl. Phys. B* **515** (1998) 163 [[hep-th/9710123](#)] [SPIRES].
- [59] B. de Carlos and J.M. Moreno, *Domain walls in supersymmetric QCD: From weak to strong coupling*, *Phys. Rev. Lett.* **83** (1999) 2120 [[hep-th/9905165](#)] [SPIRES].
- [60] D. Binosi and T. ter Veldhuis, *Domain walls in supersymmetric QCD: The taming of the zoo*, *Phys. Rev. D* **63** (2001) 085016 [[hep-th/0011113](#)] [SPIRES].
- [61] O. Bergman, M.R. Gaberdiel and M.B. Green, *D-brane interactions in type IIB plane-wave background*, *JHEP* **03** (2003) 002 [[hep-th/0205183](#)] [SPIRES].
- [62] A.V. Smilga, *Tenacious domain walls in supersymmetric QCD*, *Phys. Rev. D* **64** (2001) 125008 [[hep-th/0104195](#)] [SPIRES].
- [63] T.R. Taylor, G. Veneziano and S. Yankielowicz, *Supersymmetric QCD and its massless limit: an effective Lagrangian analysis*, *Nucl. Phys. B* **218** (1983) 493 [SPIRES].
- [64] K. Becker and M. Becker, *Nucl. Phys. B* **506** (1997) 48 [[hep-th/9705091](#)] K. Becker and M. Becker, *A two-loop test of M(atrrix) theory*, *Nucl. Phys. B* **506** (1997) 48 [[hep-th/9705091](#)] [SPIRES].
- [65] A.V. Smilga, *Abelian matrix models in two loops*, *Nucl. Phys. B* **659** (2003) 424 [[hep-th/0205044](#)] [SPIRES].
- [66] A.V. Smilga, *Calculation of the degree corrections in fixed point gauge. (in Russian)*, *Sov. J. Nucl. Phys.* **35** (1982) 271 [*Yad. Fiz.* **35** (1982) 473] [SPIRES].
- [67] V.A. Fock, *Die eigenzeit in der klassischen und in der Quantenmechanik*, *Phys. Z. Sowjetunion* **12** (1937) 404 [SPIRES].
- [68] J. Schwinger, *Particles, sources, fields*, Addison-Wesley, N.Y. U.S.A. (1963).
- [69] C. Cronstrom, *A simple and complete Lorentz covariant gauge condition*, *Phys. Lett. B* **90** (1980) 267 [SPIRES].
- [70] M.S. Dubovikov and A.V. Smilga, *Analytical properties of the quark polarization operator in an external selfdual field*, *Nucl. Phys. B* **185** (1981) 109 [SPIRES].