

ERRATUM

Open Access



Erratum to: 'The educational gradient of obesity increases among Swedish pregnant women: a register-based study'

Helena Bjermo^{1,2*}, Simon Lind¹ and Finn Rasmussen^{1,2}

Unfortunately, the original version of this article [1] contained an error. The presentation of Fig. 1 was incorrect. The numbers on the Y-axis are incorrect and need modification. The correct version is provided below.

Received: 26 May 2016 Accepted: 26 May 2016

Published online: 15 June 2016

Reference

1. Bjermo H, Lind S, Rasmussen F. The educational gradient of obesity increases among Swedish pregnant women: a register-based study. *BMC Public Health*. 2015;15:315.

* Correspondence: helena.bjermo@sl.se

¹Unit of Child and Adolescent Health, Centre for Epidemiology and Community Medicine, Stockholm County Council, Box 1497SE-171 29 Solna, Sweden

²Child and Adolescent Public Health Epidemiology, Department of Public Health Sciences, Karolinska Institutet, SE-171 77 Stockholm, Sweden

Submit your next manuscript to BioMed Central and we will help you at every step:

- We accept pre-submission inquiries
- Our selector tool helps you to find the most relevant journal
- We provide round the clock customer support
- Convenient online submission
- Thorough peer review
- Inclusion in PubMed and all major indexing services
- Maximum visibility for your research

Submit your manuscript at
www.biomedcentral.com/submit



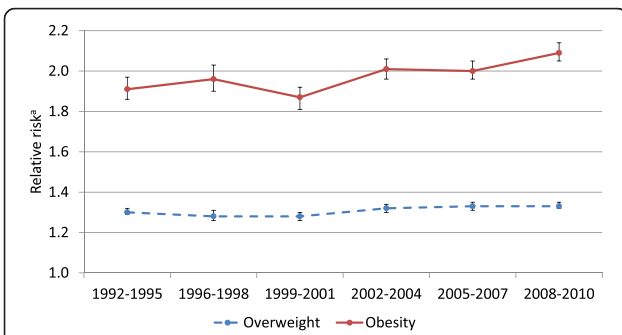


Fig. 1 Time trends in relative risks of overweight and obesity between Swedish nulliparous women with low vs high education. BMI was assessed at the first visit to the antenatal-care clinic. ^aRelative risk (95 % confidence interval) for overweight/obesity among women with low education compared to higher educated women, adjusted for maternal age