

RESEARCH

Open Access

Dysregulation of estrogen receptor beta (ER β), aromatase (CYP19A1), and ER co-activators in the middle frontal gyrus of autism spectrum disorder subjects

Amanda Crider¹, Roshni Thakkar², Anthony O Ahmed¹ and Anilkumar Pillai^{1*}

Abstract

Background: Autism spectrum disorders (ASD) are much more common in males than in females. Molecular alterations within the estrogen receptor (ER) signaling pathway may contribute to the sex difference in ASD, but the extent of such abnormalities in the brain is not known.

Methods: Postmortem middle frontal gyrus tissues (13 ASD and 13 control subjects) were used. The protein levels were examined by western blotting. The gene expression was determined by qRT-PCR.

Results: Gene expression analysis identified a 35% decrease in ER β mRNA expression in the middle frontal gyrus of ASD subjects. In addition, a 38% reduction in aromatase (CYP19A1) mRNA expression was observed in ASD subjects. We also found significant decreases in ER co-activators that included a 34% decrease in SRC-1, a 77% decrease in CBP, and a 52% decrease in P/CAF mRNA levels in ASD subjects relative to controls. There were no differences in the mRNA levels of TIF-2, AIB-1 (ER co-activators), ER co-repressors (SMRT and nCoR) and ER α in the middle frontal gyrus of ASD subjects as compared to controls. We observed significant correlations between ER β , CYP19A1, and co-activators in the study subjects. Immunoblot analysis further confirmed the changes in ER β and aromatase at the protein level in the control and ASD subjects.

Conclusions: These results, for the first time, provide the evidence of the dysregulation of ER β and co-factors in the brain of subjects with ASD.

Keywords: Aromatase, Autism, Estrogen, Receptor, Sex

Background

Autism spectrum disorders (ASD) are a heterogeneous set of neurodevelopmental disorders including autism, Asperger's syndrome, childhood disintegrative disorder, and pervasive developmental disorder not otherwise specified (PDD-NOS). Autism is currently diagnosed by extensive behavioral and psychological testing and diagnosis is declared based on DSM-V characteristics. These characteristics include communication deficits, excessive dependence on routine, and obsessive tendencies showing up in early childhood. ASDs are more prevalent in boys than in girls,

with ratios of 3:1 for classic autism and 10:1 for Asperger syndrome, suggesting the possible role of sex hormones in the pathophysiology of this disorder [1]. It has been suggested that high levels of testosterone during early development may be a risk factor for ASDs [2,3]. The above hypothesis has been supported by a number of studies reporting an association between fetal testosterone levels and autistic features [2].

Estradiol, the most potent estrogen, is formed from testosterone by the enzyme aromatase, also known as cytochrome P450, family 19 (CYP19A1). Estrogen is neuroprotective and plays an important role in emotional responses [4] and in frontal cortical activity during cognitive task performance in humans [5]. Estrogen acts through the binding to its receptor called estrogen

* Correspondence: apillai@gru.edu

¹Department of Psychiatry and Health Behavior, Medical College of Georgia, Georgia Regents University, 997 St. Sebastian Way, Augusta, GA 30912, USA
Full list of author information is available at the end of the article

receptor (ER). ER exists in two main forms, ER α and ER β , which have distinct tissue expression patterns [6]. ER α and ER β are encoded by separate genes, *ESR1* and *ESR2*, respectively, found at different chromosomal locations, and numerous mRNA splice variants exist for both receptors in both diseased and normal tissue [7]. In the “classical” pathway of estrogen action, estrogen binds to ER, a ligand-activated transcription factor that regulates transcription of target genes in the nucleus by binding to estrogen response element regulatory sequences in target genes and recruiting co-regulatory proteins such as co-activators or co-repressors. The major co-regulators involved in estrogen signaling are steroid receptor co-activator 1 (SRC-1), transcriptional mediators/intermediary factor 2 (TIF-2), nuclear receptor co-repressor 1 (nCoR), CREB-binding protein (CBP), p300/CREB-binding protein-associated protein (P/CAF), amplified in breast 1 (AIB-1), and silencing mediator of retinoid and thyroid hormone receptors (SMRT) [8]. Among these co-factors, SRC-1, TIF-2, CBP, AIB-1, and P/CAF are transcriptional co-activators, whereas SMRT and nCoR are transcriptional repressors. On the other hand, in the rapid or “non-genomic” pathway, activation of the membrane ER by estrogen leads to a rapid change in various intracellular signaling molecules including kinases, which in turn regulate gene transcription [9].

ER α is widely distributed in the various brain regions including amygdala-hippocampal area, periamygdaloid cortex, and posterior cortical nucleus of the brain [10]. Moreover, ER α influences various neurotransmitter systems, such as dopamine, serotonin (5-HT), and norepinephrine, indicating its role in neuropsychiatric disorders [11,12]. ER β is the principal estrogen receptor expressed in brain areas such as cerebral cortex, hippocampus, and cerebellum [13]. An earlier study has found a significant association of the ER β gene with scores on the Autism Spectrum Quotient and the Empathy Quotient in ASD subjects [14]. Moreover, ER β mediates some of the effects of estrogens on anxiety, locomotor activity, fear responses, and learning behavior [15]. Although the above studies are interesting, it is still unclear whether the expression of ER is impaired in the brain of ASD subjects. In the present study, we first examined the gene expression of ER α , ER β , CYP19A1, and the co-regulators SRC-1, TIF-2, CBP, P/CAF, SMRT, AIB-1, and nCoR in postmortem middle frontal gyrus of ASD and control subjects. The middle frontal gyrus region was selected because a number of studies from neurocognitive as well as neuroimaging studies have implicated middle frontal gyrus in the pathophysiology of ASD [16-18]. Moreover, a sexual dimorphic nature has been reported in the middle frontal gyrus [19]. Based on our mRNA data, we then used western blotting to examine whether the

changes found at the gene level of ER β and CYP19A1 are significant at the protein level. We hypothesized that the expression of ERs are impaired in ASD and these abnormalities involve key co-regulators involved in ER regulation.

Methods

Ethics statement

The Georgia Regents University Institutional Review Board has deemed this study exempt from full review due to the use of de-identified human postmortem brain samples, with no possibility to track back the identity of the donors. There was no involvement of animal studies in this paper.

Postmortem brain tissues

Postmortem middle frontal gyrus tissues of ASD (n = 13) and control (n = 13) subjects were received from the NICHD Brain and Tissue Bank for Developmental Disorders at the University of Maryland, Baltimore, MD, USA. Table 1 shows a detailed description on the demographics of samples. The individual scores for each of the symptomatic domains, Autism Diagnostic Interview-Revised (ADI-R) were obtained from the brain bank website. The information on ADI-R was available for 9 out of 13 subjects with ASD. We did not find any significant difference in confounding variables such as PMI, refrigeration interval, age at death, RNA integrity, and brain pH between ASD and control subjects.

Immunoblotting

Brain tissue was homogenized in a tissue lysis buffer containing 50 mM Tris-HCl (pH 7.5), 150 mM NaCl, 1.0% sodium deoxycholate, 0.1% sodium dodecyl sulfate (SDS), 2 mM EDTA, 6 μ M PMSF, and 1.0% Triton X-100 supplemented with protease inhibitor cocktail (Sigma). The homogenate was centrifuged at 13,000 rpm for 10 min at 4°C and the supernatant was used for protein estimation by the bicinchoninic acid method (BCA Protein Assay Kit, Sigma). Samples (30–40 μ g) were subjected to SDS-PAGE and transferred onto a nitrocellulose membrane. The membrane was blocked for 1 h in PBS with Tween 20 and 5% non-fat milk or 5% BSA followed by overnight incubation with a primary antibody. The primary antibodies used were: anti-ER β (1:2,000, Abcam; ab3577 [20,21]); anti-ER α (1:500, Santa Cruz Biotech; sc-71064); anti-aromatase (1:500, Santa Cruz Biotech; sc-14245); anti-CBP (1:200, Santa Cruz Biotech; sc-7300); anti-SRC-1 (1:500, Santa Cruz Biotech; sc-32789), or anti-P/CAF (1:500, Santa Cruz Biotech; sc-13124). Following washing, the membranes were incubated with secondary antibody for 1 h. We used enhanced chemiluminescence detection reagent kit (Thermo Scientific) to detect the proteins. The intensity of the bands was quantified using densitometry

Table 1 Demographic characteristics of postmortem brain samples

Variable	Control	ASD
Age (years)	11.70 ± 1.584	11.80 ± 1.609
PMI (h)	14.46 ± 2.171	19.00 ± 2.776
Sex (F/M)	1/12	0/13
Storage (days)	4287 ± 638.7	2829 ± 397.7
RIN	5.55 ± 0.71	6.84 ± 0.53
pH	5.95 ± 0.06	6.11 ± 0.07
Manner of death	Drowning (3), Vehicle accident (4), Hanging/suicide (2), Cardiovascular complication (1), TSS (1), Multisystem failure (1), Anaphylaxis (1)	Drowning (6) Vehicle accident (1) Cardiovascular complication (2) Cancer (1) Hemorrhage (2) Diabetic ketoacidosis (1)
Medications*	Yes (1) (Concerta, Clonidine) No (12)	Yes (4) (Zyprexa (1), Reminyl (1), Naltrexone (1), Risperdal (2), Luvox (1), Clonidine (1), Insulin (1)) No (9)

ASD, Autism spectrum disorder; F, Female; M, Male; PMI, Postmortem interval; RIN, RNA integrity; TSS, Toxic shock syndrome. Values are Mean ± SE. *Note that some individuals took multiple medications.

software (Image J, NIH). The immunoblot data was corrected for corresponding glyceraldehyde 3-phosphate dehydrogenase (GAPDH; 1:5,000, Cell Signaling) values. For immunoprecipitation, 300 µg of proteins were pre-cleared for 2 h with 40 µL of PureProteome Protein A and G Magnetic Beads (Millipore) and 40 µg IgG antibody (Millipore), followed by incubation overnight with the primary antibody. The immunoprecipitated proteins were subjected to immunoblotting for the detection of co-precipitated proteins.

Quantitative reverse transcriptase PCR (qRT-PCR)

Total RNA from postmortem brain tissues was isolated using a commercially available kit (SV RNA Isolation, Promega, Madison, WI, USA). qRT-PCR was performed on a MasterCycler (Eppendorf) using a SuperScript III Platinum SYBR Green One-Step qRT-PCR kit (Invitrogen, Carlsbad, CA, USA). A typical reaction mixture of a total volume of 25 µL consisted of 0.5 µL Superscript III RT/Platinum Taq mix, 12.5 µL 2X SYBR Green Reaction Mix (includes 0.4 mM of each dNTP and 6 mM MgSO₄), 12.5 pMol of each of forward or reverse primers, and 4 µL DEPC-treated water. PCR amplification was done with an initial incubation at 55°C for 1,200 sec, then at 95°C for 120 sec followed by 35 cycles of 95°C for 15 sec, 50°C for 30 sec, 72°C for 30 sec, and a final melting curve from 55°C to 95°C at 0.2°C/sec. We confirmed the primer specificity by melting curve analysis and electrophoresis of PCR products on a 2% agarose gel to confirm the presence of a single band of the predicted size. The mRNA for genes of interest was normalized to two control genes (GAPDH and β-actin) and a geometric mean of these genes. The

mRNA expression levels were quantified by the delta-delta Ct method. Primers were synthesized by Integrated DNA Technologies (Additional file 1: Table S1).

Statistical analysis

Analysis of covariance (ANCOVA) models were used to examine the differences in estrogen receptor expression between postmortem samples of people with ASD and the control sample (i.e., affection status). To examine the unique effects of affection status on estrogen receptor, age, postmortem interval, storage time, sample pH, and RNA integrity number were added to the model as covariates. Only covariates with at least small associations with an estrogen receptor expression were considered for inclusion in the ANCOVA model with the receptor signal as a dependent variable. Candidate covariates that were significantly correlated with receptor expression levels were included in the model. To maximize the observed power, non-significant covariates were removed from the model until only significant covariates remained in the model; η^2 and partial η^2 coefficients were computed as estimates of effect size. Exact probability (*P*) values of less than 5% were considered significant. Simple correlations were computed to examine the association of covariates and clinical variables with receptor expression levels. All analyses were performed using SPSS Statistics 20 software (IBM).

Results

The postmortem sample comprised 26 subjects, half of whom had a confirmed diagnosis of an ASD and half of whom were age- and gender-matched controls.

Decrease in mRNA levels of ER β and CYP19A1, but no change in ER α mRNA in the middle frontal gyrus of ASD subjects

The mRNA levels of ER α , ER β , and CYP19A1 in the middle frontal gyrus of control and ASD subjects were determined by qRT-PCR. Additional file 2: Table S2 depicts the correlations between the mRNA transcripts and confounding variables. An ANCOVA [between-subjects factor: affection status (ASD, Control); covariates: age, postmortem interval, storage time, sample PH] was performed in ER α data analysis. None of these covariates demonstrated significant main effects in the prediction of ER α expression. The main effect of affection status on ER α was not statistically significant (Figure 1A) [$F(1, 19) = 2.65, P = 0.12, \eta^2_p = 0.123$]. We found a statistically significant main effect of affection status on ER β mRNA levels when age, storage time, and RNA integrity number were considered in the model as covariates (Figure 1B) [$F(1, 20) = 34.10, P < 0.0001, \eta^2_p = 0.630$]. None of the covariates demonstrated a significant main effect on ER β mRNA. Subjects with ASD (estimated marginal means (EMM) = 65.85, standard error (SE) = 4.06) demonstrated much lower expression (35% decrease) of ER β than the control group (EMM = 100.59, SE = 3.88). For CYP19A1 mRNA data analysis, age, storage time, sample pH, RNA integrity number, and postmortem interval were entered into the

model as covariates. None of the covariates in the model demonstrated a significant main effect in the prediction of CYP19A1 mRNA when they were entered in the model with affection status. Affection status was a significant predictor of CYP19A1 expression (Figure 1C) [$F(1, 17) = 27.90, P < 0.0001, \eta^2_p = 0.621$]. Subjects with ASD had reduced (EMM = 62.76, SE = 4.78) CYP19A1 mRNA levels (38% decrease) relative to the control group (EMM = 101.29, SE = 4.78).

Table 2 shows the correlation of mRNA transcripts with ADI-R scores. We have adjusted the P values using the Holm-Bonferroni sequential correction for multiple comparisons. We did not find any significant correlation of ER α , ER β , and CYP19A1 mRNA levels with any of the ADI-R scores.

Decrease in mRNA levels of ER co-activators (SRC-1, CBP and P/CAF), but no change in ER co-repressors (SMRT and nCoR) in the middle frontal gyrus of ASD subjects

Postmortem interval, storage time, sample pH, and RNA integrity number were entered as covariates in the model to analyze SRC-1 mRNA data. None of the covariates in the model demonstrated a significant main effect when they were entered in the model with affection status. The predicted main effect of affection status on SRC-1 expression was statistically significant (Figure 2A)

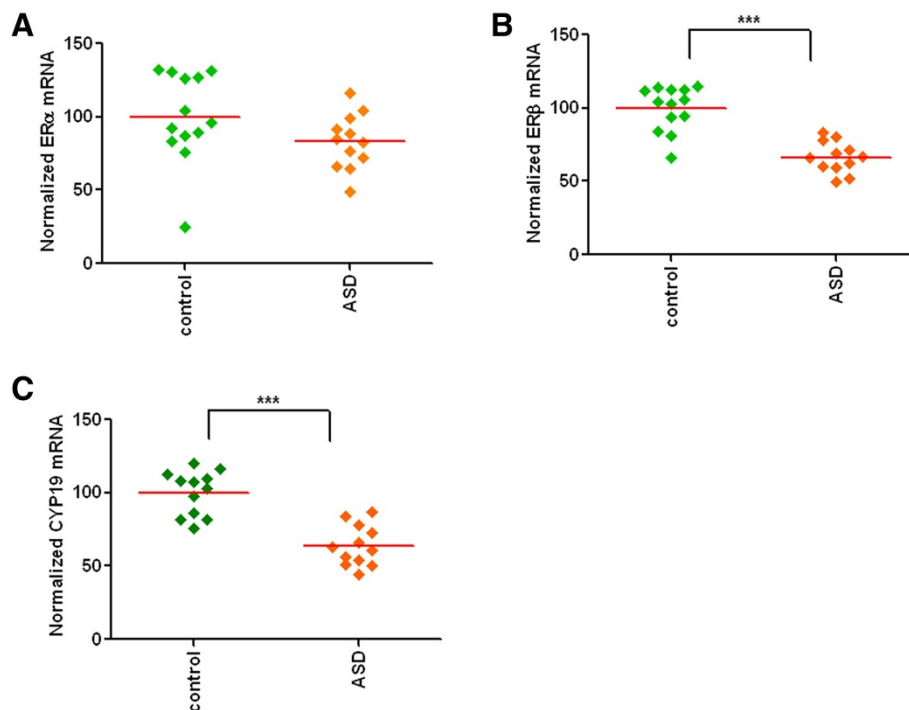


Figure 1 Decrease in mRNA levels of ER β and CYP19A1, but no change in ER α mRNA in the middle frontal gyrus of ASD subjects.

(A) No significant change in ER α mRNA. (B) Significant reduction in ER β mRNA in the ASD subjects. (C) CYP19A1 mRNA levels were significantly lower in the ASD subjects. mRNA levels were determined by qRT-PCR, and the values were normalized to the geometric mean of two control genes (GAPDH and β -actin). *** $P < 0.001$ vs. controls.

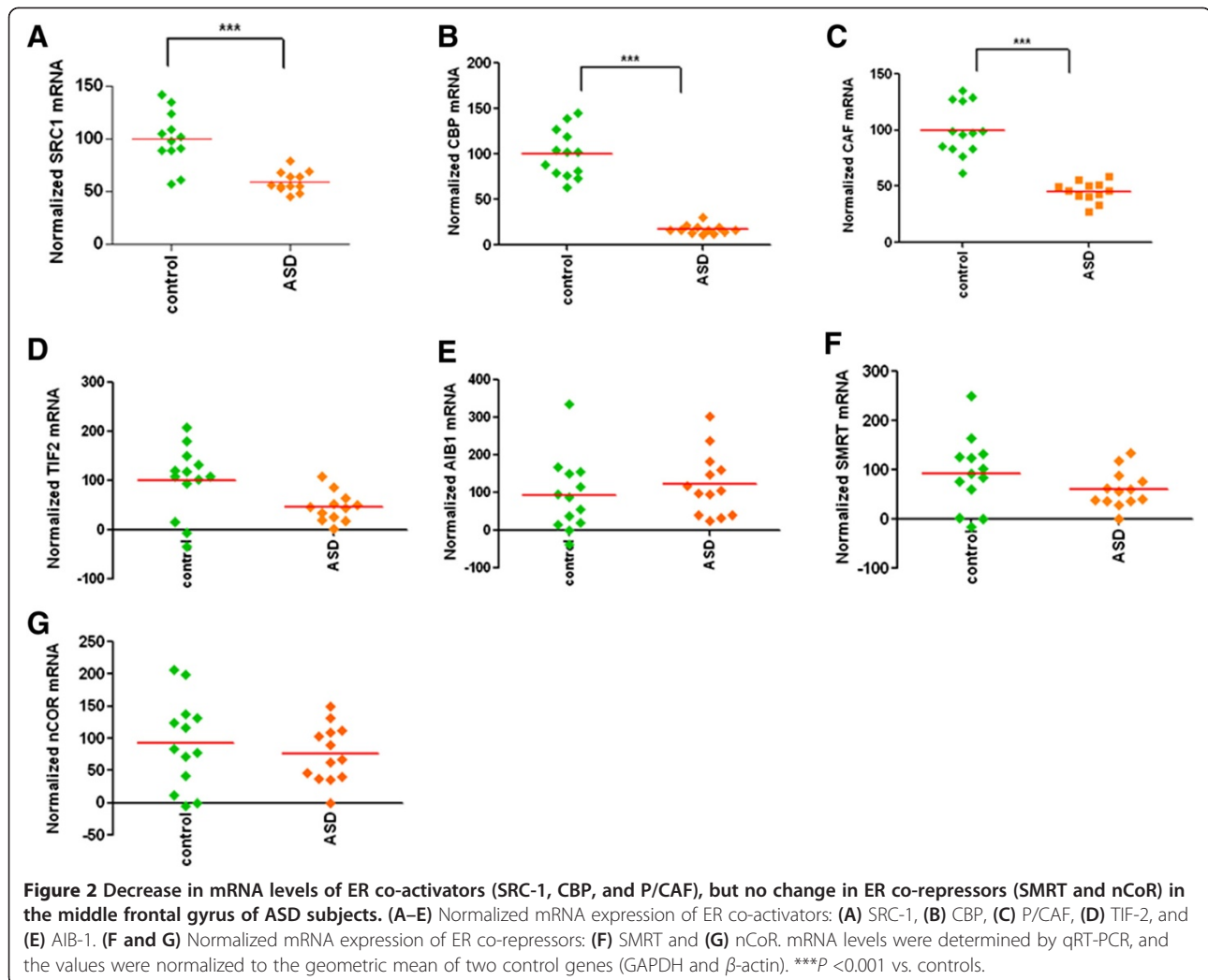
Table 2 Correlations of mRNA transcripts with ADI-R scores

		Social interaction	Verbal communication	Non-verbal communication	Stereotyped behavior	Abnormality of development
ER co-repressors						
nCoR	r	-0.021	-0.202	0.479	-0.791	0.063
	P	0.961	0.745	0.277	0.019	0.893
	Adjusted P	1.000	1.000	1.000	0.095	1.000
SMRT	r	0.013	-0.090	-0.258	-0.489	-0.640
	P	0.976	0.866	0.576	0.219	0.122
	Adjusted P	1.000	1.000	1.000	0.876	0.610
ER co-activators						
CBP	r	-0.549	0.117	0.023	-0.261	-0.718
	P	0.126	0.825	0.956	0.498	0.045
	Adjusted P	0.504	1.000	1.000	1.000	0.225
P/CAF	r	-0.126	0.540	-0.319	0.515	-0.459
	P	0.747	0.268	0.441	0.156	0.253
	Adjusted P	1.000	1.000	1.000	0.780	1.000
TIF-2	R	-0.103	0.687	-0.217	0.536	-0.325
	P	0.792	0.132	0.606	0.137	0.432
	Adjusted P	1.000	0.660	1.000	0.660	1.000
SRC-1	r	-0.109	0.065	-0.876	0.294	-0.774
	P	0.798	0.917	0.010	0.480	0.041
	Adjusted P	1.000	1.000	0.049	1.000	0.164
AIB-1	r	0.274	0.200	0.099	-0.582	-0.000
	P	0.475	0.703	0.814	0.099	0.999
	Adjusted P	1.000	1.000	1.000	0.495	1.000
Estrogen receptor						
ER α	r	0.081	-0.210	0.265	-0.157	0.505
	P	0.848	0.735	0.566	0.710	0.248
	Adjusted P	1.000	1.000	1.000	1.000	1.000
ER β	r	0.112	-0.203	0.192	-0.215	0.316
	P	0.791	0.743	0.680	0.610	0.489
	Adjusted P	1.000	1.000	1.000	1.000	1.000
Enzyme						
CYP19A1	r	0.405	-0.746	-0.143	-0.227	0.148
	P	0.320	0.148	0.760	0.589	0.751
	Adjusted P	0.740	1.000	1.000	1.000	1.000

ADI-R scores were available for only 9 of the 13 ASD subjects. Adjusted *P* denotes *P* values adjusted using the Holm-Bonferroni sequential correction for multiple comparisons; *r*, Pearson correlation; *P*, level of significance. Bolded text indicates significant *P* values.

[$F(1, 18) = 11.05, P = 0.004, \eta^2_p = 0.380$]. We found a significant reduction in SRC-1 mRNA (34% decrease) in the middle frontal gyrus of subjects with ASD (EMM = 63.33, SE = 6.26) as compared to controls (EMM = 95.85, SE = 6.26). The predicted main effect of affection status on CBP mRNA was statistically significant, when postmortem interval, storage time, sample pH, and RNA integrity number were entered as covariates in the model (Figure 2B) [$F(1, 18) = 53.15, P < 0.0001, \eta^2_p = 0.747$]. None of the

covariates in the model achieved statistical significance. Overall, subjects with ASD (EMM = 21.86, SE = 6.65) demonstrated much lower expression (77% decrease) of CBP than the control group (EMM = 95.64, SE = 6.33). Data on P/CAF mRNA was analyzed by considering post-mortem interval, storage time, sample pH, and RNA integrity number as covariates in the model. However, none of these covariates remained significant predictors when they were entered into the model with affection status as



an independent variable. The main effect of affection status on P/CAF expression was found significant (Figure 2C) [$F(1, 18) = 33.53, P < 0.0001, \eta_p^2 = 0.651$]. Moreover, a significant reduction in P/CAF mRNA expression (52% decrease) was found in the middle frontal gyrus of subjects with ASD (EMM = 47.47, SE = 5.71) as compared to controls (EMM = 97.80, SE = 5.44). Storage time, sample pH, and RNA integrity number were included in the model as covariates to analyze the mRNA data on TIF-2. Among these covariates, storage time [$F(1, 20) = 4.70, P = 0.042, \eta_p^2 = 0.19$] and sample pH [$F(1, 20) = 4.32, P = 0.05, \eta_p^2 = 0.18$] remained significant covariates in the model. The predicted main effect of affection status on TIF-2 expression did not achieve statistical significance (Figure 2D) [$F(1, 20) = 1.49, P = 0.236, \eta_p^2 = 0.07$]. Similarly, no significant effect of affection status was observed on AIB-1 mRNA expression (Figure 2E) [$F(1, 20) = 1.37, P = 0.264, \eta_p^2 = 0.06$].

Next, we examined whether the mRNA levels of ER co-repressors (SMRT and nCoR) are altered in the postmortem brain tissues of subjects with ASD. With postmortem

interval and storage time entered as covariates in the model, the predicted main effect of affection status on SMRT expression was not statistically significant (Figure 2F) [$F(1, 17) = 0.013, P = 0.91, \eta_p^2 = 0.001$]. We found that storage time [$F(1, 17) = 7.51, P = 0.014, \eta_p^2 = 0.306$] remained a statistically significant covariate in this model. Data on nCoR mRNA was analyzed by considering postmortem interval, storage time, sample pH, and RNA integrity number as covariates in the model. No main effect of affection status was found on nCoR expression (Figure 2G) [$F(1, 17) = 0.046, P = 0.83, \eta_p^2 = 0.003$]. Storage time [$F(1, 17) = 9.59, P = 0.007, \eta_p^2 = 0.361$] was the only statistically significant covariate found in this model.

We observed some significant associations between the co-factors and the ADI-R scores in the subjects with ASD (Table 2). SRC-1 mRNA was negatively correlated with non-verbal communication ($r = -0.876, P = 0.01$) and abnormality of development ($r = -0.774, P = 0.041$) scores. A significant negative correlation was found between CBP mRNA and abnormality of development score ($r = -0.718,$

$P = 0.045$). In addition, nCoR mRNA was negatively associated with stereotyped behavior score ($r = -0.791$, $P = 0.019$).

Correlations between mRNA expression of ERs, CYP19A1, and co-factors in the middle frontal gyrus of study subjects

We used Spearman's correlation to examine the relationships between mRNA expression of ERs, CYP19A1, and co-factors in the middle frontal gyrus of the study subjects. Additional file 3: Table S3 depicts the correlations between the mRNA transcripts. ER α was positively correlated with ER β and CYP19A1 mRNA levels. A large positive correlation was observed between ER β and CYP19A1. In addition, ER β was positively correlated with SRC-1, P/CAF, and CBP. Similarly, CYP19A1 was positively correlated with SRC1, P/CAF, and CBP. We also found significant correlations in the mRNA levels between the co-factors. Positive associations were found between SRC1 and P/CAF, CBP, TIF-2, SMRT, or nCoR. TIF-2 was positively correlated with P/CAF and CBP. In addition, we observed positive correlations between P/CAF and CBP mRNA levels, and CBP with SMRT expression. Interestingly, a significant positive correlation was also found in the mRNA levels between the co-repressors SMRT and nCOR. We did not find any significant correlation

between AIB-1 and ERs, CYP19A1, or other co-factors examined in this study.

Decrease in ER β and CYP19A1 protein levels in the middle frontal gyrus of ASD subjects

Given that we found significant reductions in ER β and CYP19A1 mRNA levels in the middle frontal gyrus of subjects with ASD, we next determined the expression of the ER α , ER β , and CYP19A1 at the protein level. We did not find any significant change in ER α protein levels in the middle frontal gyrus of subjects with ASD as compared to controls (Figure 3A). We found a significant reduction in ER β protein (Figure 3B; $P < 0.05$) and CYP19A1 (Figure 3C; $P < 0.05$) levels in the middle frontal gyrus of subjects with ASD as compared to controls. Next, we examined whether the co-factors whose levels were altered in the ASD interact with ER β in the brain samples. We performed immunoprecipitation assays to determine possible conjugation of P/CAF, SRC-1, and CBP with ER β in the middle frontal gyrus of control subjects, and each of these immunoprecipitates was examined for co-purification of ER β by western blot. ER β was detected in P/CAF, SRC-1, or CBP immunoprecipitates, but not in the control IgG (Additional file 4: Figure S1).

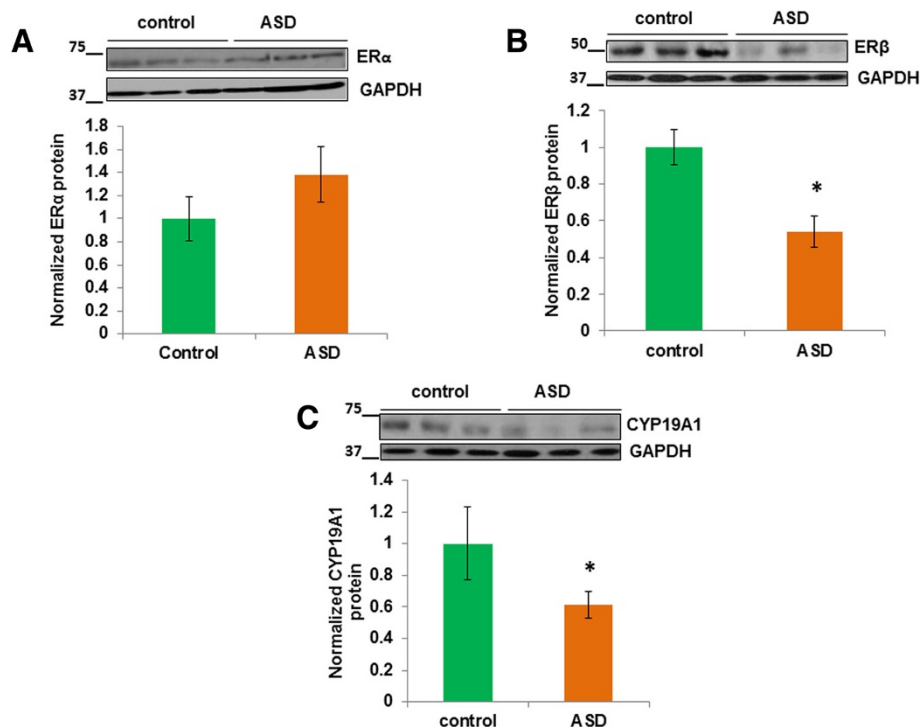


Figure 3 Decrease in ER β and CYP19A1 protein levels in the middle frontal gyrus of ASD subjects. ER α , ER β , and CYP19A1 protein levels were determined by western blot analysis. The upper panels show representative autoradiogram of (A) ER α , (B) ER β , or (C) CYP19A1 and GAPDH, and the lower panels represent fold-change in normalized ER α , ER β , and CYP19A1 protein levels, respectively. Results are mean \pm SEM vs. controls. * $P < 0.05$ vs. controls.

Discussion

We have found, for the first time, alterations in ER β transcriptional regulation in the brain of ASD subjects. We also report a significant decrease in CYP19A1 expression in ASD subjects. The above changes were associated with alterations in ER co-activators in the same study subjects. We did not find a significant difference in ER α expression between ASD and controls. Together, these findings suggest alterations in ER signaling in ASD.

The decrease in ER β mRNA and protein expression in the middle frontal gyrus of ASD subjects found in this study is consistent with the increasing evidence for the role of estrogen signaling in the etiology of ASD. A significant association of the ER β gene with autism traits as measured by the Autism Spectrum Quotient and the Empathy Quotient has been reported in ASD subjects [14]. ER β is abundantly expressed in the cortex [22]. Moreover, ER β plays an important role in neurodevelopment, and ER β knockout, but not ER α knockout mice show defects of neuronal migration [23]. It is known that ER α and ER β have distinct tissue expression profiles, and have different cellular functions [22-24]. ER α is involved in mediating estrogen action on reproductive organs and reproductive behavior, whereas ER β is known to mediate some of the effects of estrogens on behaviors that are not specifically associated with reproduction, such as locomotor activity, fear responses, anxiety, and learning [15]. ER β knockdown has been shown to abolish E2-induced reductions in depressive behavior in mice [25-27]. Moreover, administration of ER β agonist or selective ligand has been shown to reduce anxiety-type behavior [27] and depressive behavior [28] in rats. Activation of ER β with the specific agonist WAY-200070 in cortical neurons results in increased spine density and PSD-95 (postsynaptic density-95) accumulation in membrane [29]. Together, these results suggest that ER β -mediated mechanism(s) are important for E2-induced neuronal plasticity.

The decrease in ER β expression found in the ASD subjects might be the result of transcriptional regulation, either through methylation or by the regulation of genes of specific transcription factors binding to the ER β promoter. Hypermethylation of the ER β promoter is associated with a marked decrease in ER β mRNA expression [30]. It is known that estrogen binds to ER leading to a conformational change in ER. The estrogen-ER complex can bind directly to DNA via an estrogen responsive element or become attached to a transcription factor [24]. It recruits a variety of co-regulators that result in the activation or repression of target genes by modifying chromatin structure. The p160/SRC (steroid receptor co-activator) family is one of the most studied classes of co-activators [31]. Among the co-activators, SRC-1 and CBP exhibit autonomous histone acetyltransferase activity

that promotes efficient transcription. In contrast, in the absence of ligands, ER associates with co-repressors nCoR or SMRT to mediate transcriptional repression of target genes through the histone deacetylase activity of the co-repressors [32-34]. The present study revealed a novel finding that ER β expression levels correlated with ER co-activators, SRC-1, P/CAF, and CBP. Moreover, we observed that the above co-factors interact with ER β in human middle frontal gyrus. It is known that ER β can antagonize ER α -dependent transcription in cells [35]. In addition, ER β and its variant, ER β 2, have been shown to increase the proteolytic degradation of ER α [36]. Thus, it is possible that the changes in the expression levels of ERs and co-factors observed in our study might influence the estrogen receptor signaling machinery and might play important roles in the pathophysiology of ASD.

Our findings demonstrate that CYP19A1 expression is significantly lower in the brain of ASD subjects. Earlier studies have reported the expression of CYP19A1, the key enzyme required for estrogen production, in the cortex [37]. Furthermore, CYP19A1 is enriched at synapses and localizes to presynaptic structures in cortical neurons [29], suggesting that brain-synthesized estrogen plays an important role in neuronal function [38]. The decrease in CYP19A1 could lead to reduced conversion of testosterone to estradiol resulting in increased levels of testosterone as observed in ASD subjects [39]. Our data is in agreement with a previous finding on reduced aromatase protein levels in the frontal cortex of ASD subjects [40]. An earlier genetic study has reported association between androgen receptor and ASD, suggesting an important role of androgen signaling in ASD [41]. Further studies should examine the mRNA and protein levels of androgen receptors in the brain samples from ASD and control subjects, and such information would be helpful to better understand the relationship between estrogen-related and testosterone-related signaling pathways in ASD.

Conclusions

We have identified dysregulation of ER β , CYP19A1, and co-activators associated with ER signaling in the middle frontal gyrus of ASD subjects with a significant association between these molecules. Our data suggest that a coordinated regulation of ER signaling molecules plays an important role in ER signaling in the brain, and that this network may be impaired in subjects with ASD. Although we found a large, significant association between the co-factor mRNA transcripts (SRC-1, CBP, and nCoR) and ADI-R scores in ASD subjects, its implication is unclear. Moreover, the robust reduction found in CBP mRNA expression in ASD subjects needs further investigation. CBP is known to be associated with other steroid receptors, including progesterone receptor, thyroid

hormone receptors, and retinoid receptors [32]. It is important to examine whether the complex formation of ER β with CBP is indispensable for ER-dependent neuronal plasticity and ASD-like behavior. Moreover, the present data was collected in a relatively smaller number of study subjects, which needs further investigation using large samples before a conclusion can be drawn. Since brain tissue from individuals with ASD is quite scarce, lymphoblastoid cell lines that are banked for ASD cohorts (though there are several limitations including difference in tissue type and difficulties in transformation procedure) could provide a large sample of biological material to understand the pathophysiology of ASD. Future studies will investigate the mechanism of regulation of ER β in ASD, which might lead to a better understanding of the pathophysiology and provide new avenues of treatment of this disorder.

Availability of supporting data

The data sets supporting the results of this article are included within the article and its additional files.

Additional files

Additional file 1: Table S1. List of primers used in the qRT-PCR.

Additional file 2: Table S2. Correlations of mRNA transcripts with confounding variables.

Additional file 3: Table S3. Correlations between mRNA transcripts.

Additional file 4: Figure S1. ER β is associated with the co-factors, P/CAF, SRC1, or CBP. Lysates from postmortem middle frontal gyrus of control subjects were subjected to immunoprecipitation (IP) using a co-factor antibody followed by western blotting (WB) with the ER β or co-factor antibody. A separate IP assay was performed for (A) P/CAF, (B) SRC1, or (C) CBP. Lysate represents 10% of the amount used in the IP. IgG, IgG control.

Abbreviations

ADI-R: Autism diagnostic interview revised; AIB-1: Amplified in breast 1; ASD: Autism spectrum disorders; CBP: CREB-binding protein; CYP19A1: Cytochrome P450, Family 19, Subfamily A, Polypeptide 1; EMM: Estimated marginal means; ER: Estrogen receptor; ER α : Estrogen receptor alpha; ER β : Estrogen receptor beta; GAPDH: Glyceraldehyde 3-phosphate dehydrogenase; nCoR: Nuclear receptor co-repressor 1; P/CAF: p300/CREB-binding protein-associated protein; SE: Standard error; SMRT: Silencing mediator of retinoid and thyroid hormone receptors; SRC-1: Steroid receptor co-activator 1; TIF-2: Transcriptional mediators/intermediary factor 2.

Competing interests

The authors declare that they have no competing interests.

Authors' contributions

AC and RT carried out the gene expression studies. AC performed the protein analysis. AOA carried out the statistical analysis and helped to draft the manuscript. AP designed the study and wrote the manuscript. All authors read and approved the final manuscript.

Acknowledgements

The authors would like to thank Diya Peter for her technical assistance. Human postmortem samples were obtained from the NICHD Brain and Tissue Bank for Developmental Disorders at the University of Maryland,

Baltimore, MD, USA. The Bank is funded by NIH Contract No. #HHSN275200900011C, Ref. No. NO1-HD-9-0011.

Author details

¹Department of Psychiatry and Health Behavior, Medical College of Georgia, Georgia Regents University, 997 St. Sebastian Way, Augusta, GA 30912, USA.

²Department of Neuroscience and Regenerative Medicine, Medical College of Georgia, Georgia Regents University, 997 St. Sebastian Way, Augusta, GA 30912, USA.

Received: 9 May 2014 Accepted: 6 August 2014

Published: 9 September 2014

References

- Gillberg C, Cederlund M, Lamberg K, Zeijlun L: Brief report: "the autism epidemic": the registered prevalence of autism in a Swedish urban area. *J Autism Dev Disord* 2006, **36**(3):429–435.
- Auyeung B, Knickmeyer R, Ashwin E, Taylor K, Hackett G, Baron-Cohen S: Effects of fetal testosterone on visuospatial ability. *Arch Sex Behav* 2012, **41**(3):571–581.
- Pfaff DW, Rapin I, Goldman S: Male predominance in autism: neuroendocrine influences on arousal and social anxiety. *Autism Res* 2011, **4**(3):163–176.
- Amin Z, Canli T, Epperson CN: Effect of estrogen-serotonin interactions on mood and cognition. *Behav Cogn Neurosci Rev* 2005, **4**:43–58.
- Berman KF, Schmidt PJ, Rubinow DR, Danaceau MA, Van Horn JD, Esposito G, Ostrem JL, Weinberger DR: Modulation of cognition-specific cortical activity by gonadal steroids: a positron-emission tomography study in women. *Proc Natl Acad Sci U S A* 1997, **94**:8836–8841.
- Mueller SO, Korach KS: Estrogen receptors and endocrine diseases: lessons from estrogen receptor knockout mice. *Curr Opin Pharmacol* 2001, **1**:613–619.
- Herynk MH, Fuqua SA: Estrogen receptor mutations in human disease. *Endocr Rev* 2004, **25**:869–898.
- Shang Y, Hu X, DiRenzo J, Lazar MA, Brown M: Cofactor dynamics and sufficiency in estrogen receptor-regulated transcription. *Cell* 2000, **103**(6):843–852.
- Mendelsohn ME, Karas RH: Rapid progress for non-nuclear estrogen receptor signaling. *J Clin Invest* 2010, **120**(7):2277–2279.
- Östlund H, Keller E, Hurd YL: Estrogen receptor gene expression in relation to neuropsychiatric disorders. *Ann N Y Acad Sci* 2003, **1007**:54–63.
- Österlund MK, Hurd YL: Estrogen receptors in the human forebrain and the relation to neuropsychiatric disorders. *Prog Neurobiol* 2001, **64**:251–267.
- Herrington DM, Howard TD, Hawkins GA, Reboussin DM, Xu J, Zheng SL, Brosnihan KB, Meyers DA, Bleecker ER: Estrogen-receptor polymorphisms and effects of estrogen replacement on high-density lipoprotein cholesterol in women with coronary disease. *N Engl J Med* 2002, **346**:967–974.
- Bodo C, Rissman EF: New roles for estrogen receptor beta in behavior and neuroendocrinology. *Front Neuroendocrinol* 2006, **27**(2):217–232.
- Chakrabarti B, Dudbridge F, Kent L, Wheelwright S, Hill-Cawthorne G, Allison C, Banerjee-Basu S, Baron-Cohen S: Genes related to sex steroids, neural growth, and social-emotional behavior are associated with autistic traits, empathy, and Asperger syndrome. *Autism Res* 2009, **2**(3):157–177.
- Krezel W, Dupont S, Krust A, Chambon P, Chapman PF: Increased anxiety and synaptic plasticity in estrogen receptor beta-deficient mice. *Proc Natl Acad Sci U S A* 2001, **98**(21):12278–12282.
- Carper RA, Courchesne E: Localized enlargement of the frontal cortex in early autism. *Biol Psychiatry* 2005, **57**(2):126–133.
- Barendse EM, Hendriks MP, Jansen JF, Backes WH, Hofman PA, Thoonen G, Kessels RP, Aldenkamp AP: Working memory deficits in high-functioning adolescents with autism spectrum disorders: neuropsychological and neuroimaging correlates. *J Neurodev Disord* 2013, **5**(1):14.
- Zikopoulos B, Barbas H: Altered neural connectivity in excitatory and inhibitory cortical circuits in autism. *Front Hum Neurosci* 2013, **7**:609.
- Goldstein JM, Seidman LJ, Horton NJ, Makris N, Kennedy DN, Caviness VS Jr, Faraone SV, Tsuang MT: Normal sexual dimorphism of the adult human brain assessed by in vivo magnetic resonance imaging. *Cereb Cortex* 2001, **11**(6):490–497.
- Guo L, Hou X, Dilimina Y, Wang B: Expression of ER β , ER α and Her-2 and distribution of molecular subtypes in Uygur and Han patients with breast cancer. *Exp Ther Med* 2014, **7**(5):1077–1082.

21. Tam A, Wadsworth S, Dorscheid D, Man SF, Sin DD: **Estradiol increases mucus synthesis in bronchial epithelial cells.** *PLoS One* 2014, **9**(6):e100633.
22. Mitra SW, Hoskin E, Yudkovitz J, Pear L, Wilkinson HA, Hayashi S, Pfaff DW, Ogawa S, Rohrer SP, Schaeffer JM, McEwen BS, Alves SE: **Immunolocalization of estrogen receptor beta in the mouse brain: comparison with estrogen receptor alpha.** *Endocrinology* 2003, **144**:2055–2067.
23. Wang L, Andersson S, Warner M, Gustafsson JA: **Estrogen receptor (ER)beta knockout mice reveal a role for ERbeta in migration of cortical neurons in the developing brain.** *Proc Natl Acad Sci U S A* 2003, **100**(2):703–708.
24. Behl C: **Oestrogen as a neuroprotective hormone.** *Nat Rev Neurosci* 2002, **3**:433–442.
25. Rocha BA, Fleischer R, Schaeffer JM, Rohrer SP, Hickey GJ: **17 β -estradiol-induced antidepressant-like effect in the forced swim test is absent in estrogen receptor- β knockout (BERKO) mice.** *Psychopharmacology (Berl)* 2005, **179**:637–643.
26. Weiser MJ, Foradori CD, Handa RJ: **Estrogen receptor β in the brain: from form to function.** *Brain Res Rev* 2008, **57**:309–320.
27. Weiser MJ, Wu TJ, Handa RJ: **Estrogen receptor- β agonist diarylpropionitrile: biological activities of R- and S-enantiomers on behavior and hormonal response to stress.** *Endocrinology* 2009, **150**:1817–1825.
28. Walf AA, Frye CA: **Administration of estrogen receptor β -specific selective estrogen receptor modulators to the hippocampus decrease anxiety and depressive behavior of ovariectomized rats.** *Pharmacol Biochem Behav* 2007, **2007**(86):407–414.
29. Srivastava DP, Woolfrey KM, Liu F, Brandon NJ, Penzes P: **Estrogen receptor β activity modulates synaptic signaling and structure.** *J Neurosci* 2010, **30**(40):13454–13460.
30. Nojima D, Li LC, Dharia A, Perinchery G, Ribeiro-Filho L, Yen TS, Dahiya R: **CpG hypermethylation of the promoter region inactivates the estrogen receptor-beta gene in patients with prostate carcinoma.** *Cancer* 2001, **92**(8):2076–2083.
31. Lanz RB, McKenna NJ, Onate SA, Albrecht U, Wong J, Tsai SY, Tsai MJ, O'Malley BW: **A steroid receptor coactivator, SRA, functions as an RNA and is present in an SRC-1 complex.** *Cell* 1999, **97**(1):17–27.
32. Shibata H, Spencer TE, Onate SA, Jenster G, Tsai SY, Tsai MJ, O'Malley BW: **Role of co-activators and co-repressors in the mechanism of steroid/thyroid receptor action.** *Recent Prog Horm Res* 1997, **52**:141–164.
33. Torchia J, Glass C, Rosenfeld MG: **Co-activators and co-repressors in the integration of transcriptional responses.** *Curr Opin Cell Biol* 1998, **10**:373–383.
34. Parker MG: **Transcriptional activation by oestrogen receptors.** *Biochem Soc Symp* 1998, **63**:45–50.
35. Matthews J, Gustafsson JA: **Estrogen signaling: a subtle balance between ER alpha and ER beta.** *Mol Intervent* 2003, **3**:281–292.
36. Matthews J, Wihlen B, Tujague M, Wan J, Strom A, Gustafsson JÅ: **Estrogen receptor (ER) beta modulates ER-alpha-mediated transcriptional activation by altering the recruitment of c-Fos and c-Jun to estrogen-responsive promoters.** *Mol Endocrinol* 2006, **20**:534–543.
37. Yague JG, Muñoz A, de Monasterio-Schrader P, Defelipe J, Garcia-Segura LM, Azcoitia I: **Aromatase expression in the human temporal cortex.** *Neuroscience* 2006, **138**(2):389–401.
38. Balthazart J, Ball GF: **Is brain estradiol a hormone or a neurotransmitter?** *Trends Neurosci* 2006, **29**(5):241–249.
39. Baron-Cohen S, Lombardo MV, Auyeung B, Ashwin E, Chakrabarti B, Knickmeyer R: **Why are autism spectrum conditions more prevalent in males?** *PLoS Biol* 2011, **9**(6):e1001081.
40. Sarachana T, Xu M, Wu R-C, Hu VV: **Sex hormones in autism: androgens and estrogens differentially and reciprocally regulate RORA, a novel candidate gene for autism.** *PLoS One* 2011, **6**(2):e17116.
41. Henningson S, Jonsson L, Ljunggren E, Westberg L, Gillberg C, Råstam M, Anckarsäter H, Nygren G, Landén M, Thuresson K, Betancur C, Leboyer M, Gillberg C, Eriksson E, Melke J: **Possible association between the androgen receptor gene and autism spectrum disorder.** *Psychoneuroendocrinology* 2009, **34**(5):752–761.

doi:10.1186/2040-2392-5-46

Cite this article as: Crider et al.: Dysregulation of estrogen receptor beta (ER β), aromatase (CYP19A1), and ER co-activators in the middle frontal gyrus of autism spectrum disorder subjects. *Molecular Autism* 2014 **5**:46.

Submit your next manuscript to BioMed Central and take full advantage of:

- Convenient online submission
- Thorough peer review
- No space constraints or color figure charges
- Immediate publication on acceptance
- Inclusion in PubMed, CAS, Scopus and Google Scholar
- Research which is freely available for redistribution

Submit your manuscript at
www.biomedcentral.com/submit

