

RESEARCH

Open Access

Gastrointestinal parasites in an isolated Norwegian population of wild red deer (*Cervus elaphus*)

Rebecca K Davidson^{1,5*}, Susan J Kutz^{2,3}, Knut Madslie¹, Eric Hoberg⁴ and Kjell Handeland¹

Abstract

Background: Thirteen red deer (*Cervus elaphus*), culled from the isolated population at the Mongstad Oil Refinery, Norway, were investigated for gastrointestinal helminths. These animals, enclosed by the refinery fence, do not have contact with other ruminants and have a high population density considering the available browsing area (1 km²) within the refinery site (3 km²). The population was estimated to be 110-130 at the time of culling.

Results: The helminth fauna among these sampled red deer was enumerated and species were identified based on morphology. *Ostertagia leptospicularis*/*O. kolchida* was detected in 83% [CI 55 - 95%], *Spiculoptera spiculoptera*/*S. mathevossiani* in 92% [CI 65 - 99%] and *Trichostrongylus axei* in 42%, [CI 19 - 68%] of the abomasa examined. Characterisation of the intestinal parasite fauna revealed *Capillaria bovis*, *Cooperia oncophora*, *Oesophagostomum venulosum*, *Trichuris globulosa* and tapeworm fragments (presumed anoplocephalids) in seven individuals. Only one calf had an infection with more than one intestinal helminth (tapeworm fragment and *Trichuris globulosa*). The remaining six deer had single species intestinal infections.

No significant age related trends were seen, with the exception of higher intensity of infection of *T. axei* in yearlings relative to other age classes. Assessment of abomasal parasite burden and body condition revealed no significant trends. In calves, statistically non-significant correlation was seen between increased parasite burden and decreased slaughter weight, whilst the opposite was seen in adults with the heaviest adults exhibiting the higher burdens. Given the small sample size the trends that were seen need further investigation. The parasite burden was aggregated with three adult red deer harbouring 75% of the total abomasal parasite count.

Conclusion: This isolated population was parasitised by a reduced subset of gastrointestinal nematodes typical of this cervid across an extensive geographic range in Eurasia. The intensity and abundance of abomasal nematodes was higher in this isolated population than reported in similar studies of red deer populations across Europe.

Keywords: Abomasum, Caecum, Diversity, *Cervus elaphus*, *Ostertagia*, Red deer, small intestine, *Spiculoptera*

Background

Four species of wild cervids are found in Norway: red deer (*Cervus elaphus atlanticus*), moose (*Alces alces*), roe deer (*Capreolus capreolus*) and wild reindeer (*Rangifer tarandus tarandus*). Populations of red deer are primarily found in coastal areas of West and Central Norway, roe deer in East and Central Norway, whereas moose are common in all parts of the country except for West Norway [1,2]. Wild reindeer live in 23 sub-populations in the alpine regions of southern Norway and constitute

one of the last populations of wild free-ranging tundra reindeer in Europe, and, therefore, are of great conservation interest. During the past few decades there has been substantial increase in populations of red deer [1,3] coincidental with geographic expansion to the east- and southwards such that these cervids are now present across all municipalities of South and Central Norway. Red deer are also increasingly seen in the wild reindeer areas during summer.

Generally parasite burdens are predicted to increase with density among deer populations [4] and may negatively influence the health status of the animals [5-7]. Increased intensity of parasite infections might, in addition to diminished food resources for hosts, be a contributing factor to the reductions in slaughter weights observed

* Correspondence: bekidavidson@hotmail.com

¹Norwegian Veterinary Institute, Pb 750 Sentrum, NO-0106 Oslo, Norway

⁵Current address: HD-diagnostikk AS, Kalkbrennerveien 12, NO-1487 Hakadal, Norway

Full list of author information is available at the end of the article

among some of the densely populated red deer areas during the recent years [2]. There is also a concern that the parasite fauna of red deer can be transmitted to sympatric domestic ruminants, such as cattle and sheep as well as other cervid species. There is further concern regarding the potential for parasite transmission from red deer into wild reindeer populations that are also challenged by climate change and environmental constraints. A prerequisite to monitoring the influence of climate change on cervid species and their parasites, as well as detection of host switching events, is development of baseline data on diversity, especially faunal structure for gastrointestinal and abomasal nematodes, among wild red deer from Norway.

Knowledge regarding biodiversity of gastrointestinal nematodes in wild red deer populations from Fennoscandia is lacking. The sole exception is a Norwegian student thesis [8], describing the gastrointestinal fauna in 25 animals taken by hunters from two municipalities in West Norway in 2005. Although the municipalities studied, Suldal and Tingvoll (Figure 1), are important areas for red deer, considerable numbers of sheep and cattle are also grazed during the summer. Thus, parasite transmission from domestic ruminants may have influenced patterns of helminth diversity. In this regard, red deer were commonly infected with species of *Ostertagiinae*, although identifications were incomplete, in addition to a broader assemblage of helminths known to occur in other wild cervids and domestic ruminants (Table 1). Parasitological surveys of red deer in continental European countries also identify *Ostertagiinae* as the predominant components of the abomasal fauna, usually including multiple polymorphic species of *Ostertagia*, *Spiculopteragia* and possibly *Teladorsagia* [9-13]. Polymorphism among males of single species (two or exceptionally three discrete male morphotypes) within this group of parasites has resulted in some inconsistency in reports that document diversity of nematode parasites in ungulates [5,14]. Minor morphs have frequently been reported as discrete species in some studies leading to confusion about host associations and geographic range for some species. Consequently, recognition of polymorphic species and correct morphological and taxonomic identification is vital to provide an accurate picture of diversity [12,15]. Establishing baselines including greater knowledge of the gastrointestinal helminth fauna and accurate species identification of abomasal *ostertagiinae* in red deer is needed to address the potential for cross transmission of parasites among free-ranging and domestic ungulates and can incorporate parasites into management decisions for wild cervid species in Norway.

The aim of this study was to characterise the gastrointestinal helminth fauna of wild red deer from a dense

isolated wild population in an area that for decades has had no other ruminants present, neither domestic nor wild. Also, as a component of diversity, the intensity of infection for helminth parasites was investigated and compared to host body condition, age, and slaughter weight.

Methods

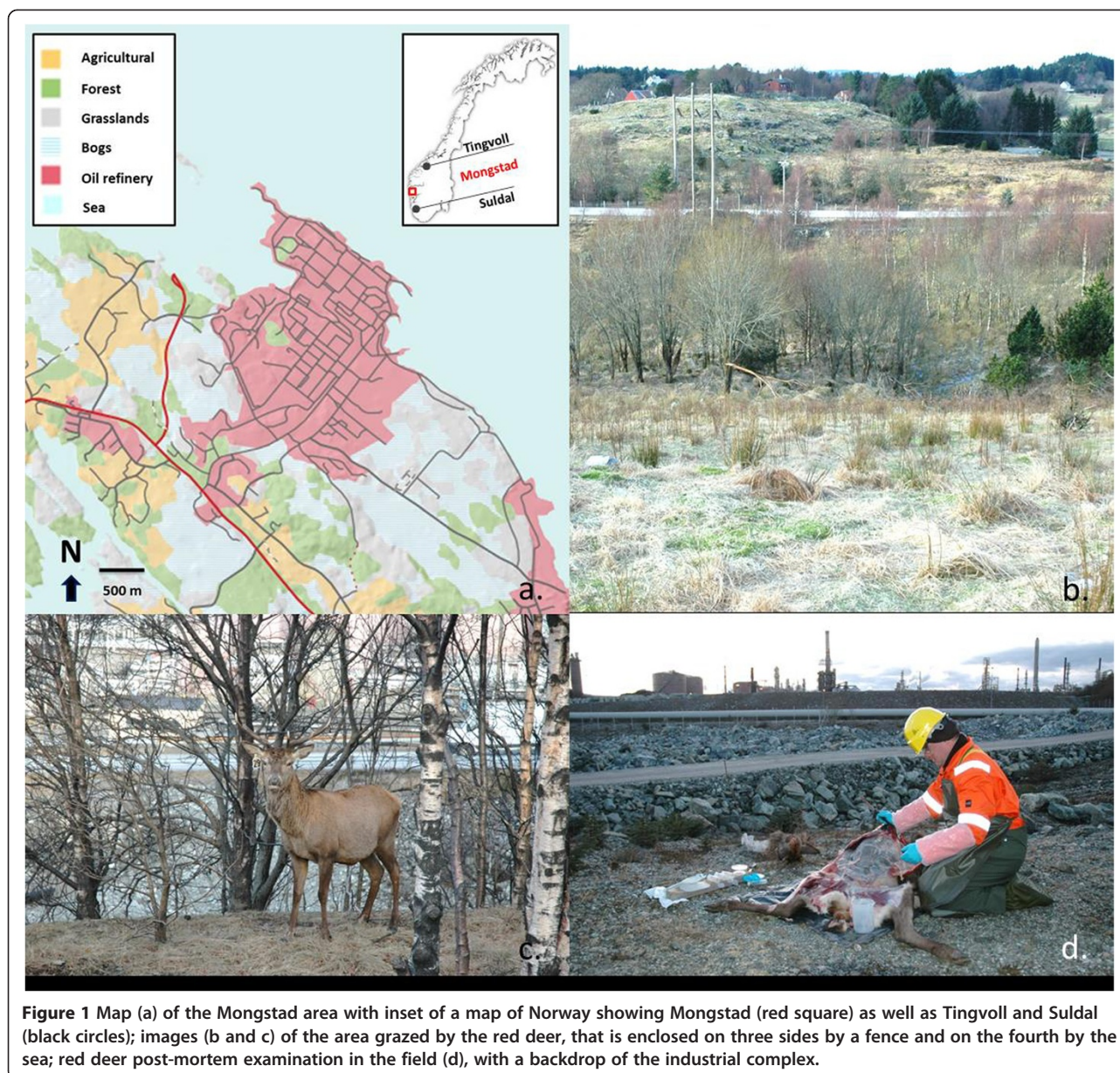
Study population and habitat

Mongstad Oil Refinery, owned by Statoil, is situated in coastal western Norway, about 50 km north of Bergen (Figure 1). The refinery was established in the early 1970s and harbours a population of free-ranging red deer. Today, the total fenced area at the refinery is about three square kilometres, but roughly one square kilometre of this area is suitable grazing for deer (grassland, bogs or forest, Figure 1). The population size was estimated to be between 110 and 130 individuals in December 2006, giving a minimum estimated population density of 37 - 43 red deer/km² before culling.

This red deer population is generally considered stationary, due to being enclosed by fencing surrounding the refinery complex. However, single tagged red deer have been registered to leave and return, since there is access to the area via the sea (Figure 1). In 2006, the landowners decided that a cull was necessary to reduce the large population size. Forty-two red deer were culled between February 6th and February 10th 2007, comprising of 14 calves, eight sub-adults and 20 adults. Due to logistical limitations, only 13 animals (three females and ten males) were available for examination. The gastrointestinal tract from each animal was removed and ligated at the time of culling. The tracts were subsequently frozen at -20°C until further analysis could be carried out. The age, sex, body condition and slaughter weight of the animal were recorded. The body condition was assessed based on visible fat reserves subcutaneously and around the heart and kidneys, as good, average, or poor [16].

Gastrointestinal investigation

Gastrointestinal tracts were thawed at room temperature and then separated into their component regions: abomasum; small intestine; caecum and large intestine. Each component was placed in its own individual 10 l bucket. The abomasum was opened along the greater curvature, the contents emptied into the bucket and the mucous membrane of the abomasum washed thoroughly with cold tap water (≥ 2 l). The bucket was allowed to sediment for at least thirty minutes before the supernatant was removed to the 2 l level. The remaining 2 l of fluid and sediment were thoroughly mixed prior to removing two 50 ml subsamples for carrying out parasite counts and identification. Abomasal samples were taken from



12 of the 13 culled animals whilst all 13 had their remaining intestinal tracts investigated. The small intestine was visually divided into thirds and the posterior third was removed and discarded. The intestinal contents of the anterior two thirds were flushed into a bucket. The intestine was clipped open longitudinally and the surface of the mucus membrane stripped by placing a finger and thumb to either side of the intestine and pulling the intestine through. Once again the bucket was allowed to stand for at least thirty minutes to sediment. The supernatant was discarded to the 2 l mark. The remaining 2 l of fluid and sediment were thoroughly mixed prior to removing two 50 ml sub-samples for carrying out parasite counts and identification. A minimum

20 g faecal sample was removed from the rectal end of the large intestine and then the intestinal region containing pelleted faeces was removed and discarded. The remaining large intestine and caecum were emptied into a bucket and flushed thoroughly. Both were clipped open and using a finger and thumb together with cold water the mucus membrane was rinsed. The bucket was allowed to sediment for at least an hour before the supernatant was removed to the 3 l level. The remaining 3 l of fluid and sediment were thoroughly mixed prior to removing one 1 l sub-sample for carrying out parasite counts and identification. All the sub-samples were re-frozen at -20°C until further analysis could be carried out. Abomasal digestion to look for arrested larvae was not carried out.

Table 1 Summary of the results from a gastrointestinal helminth survey in wild red deer (*Cervus elaphus*) in Norway by Bakka *et al.* [8] showing the prevalence and parasite counts, including the 95% confidence interval (CI), as well as species identified

Bakka <i>et al.</i> [8]	N	Prevalence [95%CI]	Mean counts [95% CI]	Min-Max (median)	Species detected (No. of individuals with each parasite species)
Abomasal parasites	25	84% [65-94]	820 [523-1116]	0-2300 (700)	<i>Ostertagia</i> sp. (6)*: <i>Ostertagia leptospicularis</i> (4) and <i>Ostertagia circumcincta</i> (1) <i>Spiculopteragia</i> sp. (15)
Small intestinal parasites	25	16% [6-35]	21 [-1-42]	0-200 (0)	<i>Nematodirus</i> sp. (4)*: <i>Nematodirus battus</i> (2) and <i>N. filicollis</i> (1) <i>Capillaria</i> sp. (1) <i>Moniezia</i> sp. (3)
Large intestinal parasites	25	72% [52-86]	6 [3-9]	0-20 (3)	<i>Trichostrongylus axei</i> (5) <i>Oesophagostomum venulosum</i> (14) <i>Chabertia</i> sp. (1)

*Not identified beyond family level.

Nematode count and identification

Parasite counts were done on one 50 ml aliquot from the abomasum (2.5% of abomasal content), one 50 ml aliquot from the small intestine (2.5% of total content) and investigation of 1 l of large intestinal content (33% of total content). The 50 ml fluid was homogenised and a 10 ml subsample transferred to a square line-marked petridish. This was examined under a stereomicroscope at 16x magnification and any nematodes seen were carefully transferred to a sample glass containing 70% ethanol until further analysis could be carried out. This was repeated until the entire 50 ml volume had been examined. The large intestinal contents were first sieved through a 420 µm mesh to remove the largest particles. The fluid was then examined and any parasites seen placed in 70% ethanol in a sample glass. The abomasal and small intestinal nematode counts were multiplied by 40 to obtain a total parasite count. The large intestinal count was multiplied by three to obtain the total count.

Species identification was based on male nematode morphology [14,15,17-20] after mounting in polyvinyl lactophenol (Chemi-Teknikk AS, Oslo, Norway) for two to five minutes. Polymorphism in the Ostertagiinae was accounted for with major and minor morphs recorded separately; counts of major and minor morphotypes representing single species were combined for analysis purposes. A few female parasites were also identified to species level, however degradation of specimens during prolonged storage and repeated freezing and thawing meant that the synlophe and other diagnostic attributes [15] could not be reliably examined for this subset of nematodes. Records reported are validated by representative voucher specimens for helminths collected from red deer in the current study that have been deposited in the US National Parasite Collection, USDA, Agricultural Research Service, Beltsville, Maryland, USA.

Statistical analyses

JMP statistical software (SAS institute, version 9.0.0) was used to generate and examine summary statistics in the dataset and a significance level of $p < 0.05$ was selected. Summary statistics were compared among the age groups, body condition and slaughter weight. The 95% confidence interval (CI) was calculated to compare means. The prevalence of the abomasal nematodes in the study population was calculated as well as the proportion of major and minor morphs of each species in addition to the proportion of males to females. Advanced statistical modelling was not carried out given the small size of the dataset.

Results

The sex of the animals was biased towards males with only three females examined. It was, therefore, not possible to analyse host gender differences in parasitic burden and diversity. The age distribution was five calves, three yearlings and five adults with mean slaughter weight of 22.9 kg, 34.3 kg and 65.3 kg respectively. Assessment of body condition (fat reserves) at slaughter showed that ten animals had average body condition, whilst three had poor body condition: two below average (one calf and one adult) and one emaciated (a yearling).

Abomasal parasites

Total abomasal counts are shown in Table 2. Species of *Ostertagia*, *Spiculopteragia* and *Trichostrongylus axei* were detected. Ostertagiines were detected in 83% [CI 55 - 95%] of the deer, all of the positive animals had *O. leptospicularis* whilst four also had the minor morph *O. kolchida*. *Spiculopteragia spiculoptera* (also known as *S. boehmi* according to Drózd *et al.* [14]) was detected in 92% [CI 65 - 99%] of the animals and two of the positive

Table 2 Gastrointestinal helminths in 13 red deer (*Cervus elaphus*) culled from a stationary population around the Mongstad Oil Refinery, Norway, in February 2007

	N	Prevalence [95%CI]	Mean counts [95% CI]	Min-Max (median)	Species detected ^a (No. of individuals with each parasite species)
Abomasal parasites	12	91.7% [64.6-98.5]	6223 [1262-11185]	0-20480 (1840)	<i>Ostertagia leptospicularis</i> (10)/ <i>O. kolchida</i> (4) <i>Spiculoptera spiculoptera</i> (11)/ <i>S. mathevossiani</i> (2) <i>Trichostrongylus axei</i> (5)
Small intestinal parasites	13	38.5% [17.7-64.4]	40 [-8-88]	0-280 (0)	<i>Capillaria bovis</i> (2) Tapeworm fragments (1)
Large intestinal parasites	13	30.8% [12.7-57.6]	1 [0-2]	0-6 (0)	<i>Cooperia oncophora</i> (2) <i>Trichuris globulosa</i> (2) <i>Oesphagostomum venulosum</i> (2)

^aVoucher specimens for helminths deposited in the US National Parasite Collection, USDA, Agricultural Research Service, Beltsville, Maryland, USA: *Trichuris globulosa* USNPC 105314; Anoplocephalidae (unidentified cestodes) USNPC 105315; *Spiculoptera boehmi* (syn. *S. spiculoptera*) USNPC 105316, 105319, 105323; *Ostertagia leptospicularis/O. kolchida* USNPC 105317, 105320, 105324; *Capillaria bovis* USNPC 105318; *Trichostrongylus axei* USNPC 105321; *Cooperia oncophora* USNPC 105322.

animals also had the minor morph *S. mathevossiani*. *T. axei* was detected in 42%, [CI 19 - 68%] of the deer.

Aggregation of the parasites was seen with adult hosts harbouring 86% of the total abomasal parasite burden whilst yearlings harboured 8% and calves 6%. Three adult individuals (two males and a female) harboured 75% of the total abomasal parasite burden estimated in this population. The five adult deer examined had significantly higher infection intensities than the five calves, whilst the two yearlings had a lower mean count than adults, although the confidence interval overlapped with that for both calves and adults.

Comparison of body condition estimate and parasite counts showed that two of the three animals with poor body condition, a calf and a yearling, had abomasal parasite counts of 640 and 4 680 respectively whilst the third, an adult, had a count of 18 360 abomasal nematodes. Comparison of the total abomasal parasite burden and slaughter weight by age showed a statistically non-significant trend of decreasing slaughter weight with increasing parasite burden in calves whilst the opposite was true in adults with increasing slaughter weight with increasing parasite burden. However this is based on just five individuals in each age class.

There was a preponderance of female abomasal nematodes compared to male but given that females were not identified we were unable to differentiate counts of the three species detected. The mean ratio of male to female in the complete abomasal parasite count was 1:2.7 (95% CI 1.61 - 3.82). The intensity of infection for male abomasal nematodes (*S. spiculoptera/S. mathevossiani*; *O. leptospicularis/O. kolchida*), showed no significant differences relative to age of the host with the exception of *T. axei* which was found at significantly higher intensities in yearlings than in the other two age groups. However with only

five of 12 individuals infected with this parasite these findings need further investigation. The relative abundance of the three species of abomasal nematodes varied (Table 3). On the whole, the most abundant species was *S. spiculoptera/S. mathevossiani*, followed by *O. leptospicularis/O. kolchida* and the least abundant was *T. axei*. The proportion of major morphs of both *Spiculoptera* and *Ostertagia* were significantly higher than minor morphs.

Small and large intestinal parasites

Capillaria bovis, *Cooperia oncophora*, *O. venulosum*, *Trichuris globulosa* and tapeworm fragments (presumed anoplocephalids, possibly a species of *Moniezia*, or *Avitellina*) were recorded in the small intestine of seven individuals (Table 2). Only one of the deer, a calf, had more than one intestinal parasite species with a co-infection of *T. globulosa* and tapeworm fragments.

Discussion

Red deer from within the enclosure around the Mongstad oil refinery, in 2007, had significantly higher abomasal parasite burdens than free-ranging red deer examined in 2005 from the regions of Tingvoll and Suldal [8]. Further, intensity and abundance exceeded the values reported in similar studies of other red deer populations from localities across Europe [9-12]. High levels of infection in this confined Norwegian population are notable, given that the study was carried out in February in contrast to the traditional hunting season in autumn when parasite burdens would in general be predicted to be higher than those observed during mid-winter [13,21].

A significant difference in abomasal parasite burden was seen between the age classes where greater burdens were associated with increasing age of hosts. Andrews

Table 3 The different proportions of the three species of abomasal nematodes identified in the abomasal contents of the red deer (*Cervus elaphus*) from Mongstad (n = 12), based upon morphological identification of all the male nematodes in each sample

Parasite species	Mean proportion of the different species (males only) [95% CI for the mean]	Mean proportion of major morphs [95% CI for the mean]
<i>Spiculopteria spiculoptera/mathevossiani</i>	64.5 [43.0-86.0]	93.4 [80.0-100.0]
<i>Ostertagia leptospicularis/kolchida</i>	26.4 [9.3-43.4]	71.9 [45.0-98.9]
<i>Trichostrongylus axei</i>	9.2 [-2.8-20.7]	Not applicable

The 95% confidence interval (CI) for the mean proportions are shown.

[22] suggested that abomasal nematode loads exceeding 8 000 can be pathogenic and the mean abomasal parasite count in adults in the stationary study population (n = 5) exceeded 12 000. Intensity of infection in our study exceeded levels reported from other, more southern, regions of Europe where red deer have been examined for parasites. Additionally, the prevalence of abomasal parasites in these European studies varied depending on the season, the age class of the host and the parasite species investigated; mean prevalence for the population as a whole generally exceeded 90%. A similarly high prevalence level was seen in the present study indicating that Ostertagiinae remain the most commonly observed gastrointestinal helminths in wild cervidae. The increase in mean abomasal parasite intensity in adults compared to yearlings and calves might be an indication that acquired immunity does not develop with some infections involving species of Ostertagiinae, although improved definition of the adults' age by year could reveal a more nuanced picture. The exception was *T. axei*, which was recorded at highest levels in the yearlings. Further investigation is needed as to what extent this is a reflection of the high infection pressure in a dense isolated population overcoming partial immunity and to what extent it reflects a lack of immunological stimulation by the parasites.

Two of the three species of abomasal nematodes identified, *S. spiculoptera/S. mathevossiani* and *O. leptospicularis/O. kolchida*, dominated the parasitic picture in the present study with the former being predominant even though both are considered to be characteristic parasites of cervids [12,23]. The more generalist parasite of domestic and wild ruminants, *T. axei* was found at a much lower prevalence in this study population but highlights the fact that wild cervids can act as reservoirs for parasites of relevance to domestic ruminants. The abomasal parasites in red deer from Suldal and Tingvoll were, for the most part, only identified to family level and not species [8]. Investigation of the small and large intestinal species diversity showed no significant differences between the two studies with the majority of the animals in both populations harbouring single species infections even though a number of animals in the study by Bakka *et al.* [8] had up to four concurrent species. Neither of

the studies was able to address the reasons for differences in species richness although consideration should be given to cross-infection with cattle and sheep since the population described by Bakka *et al.* [8] shared grazing with domestic ruminants whilst the population in the present study was isolated. For example, this may account for the occurrence of *Nematodirus battus*, *N. flicollis* and *Teladorsagia circumcincta* at Suldal and Tingvoll which are primary helminths of domestic sheep. There were no significant differences in the total parasite count for the small intestine between the two studies although a trend of higher counts was seen in red deer in this study.

Approximately 45 species of gastrointestinal helminths are known in red deer across an extensive range in Eurasia [23]. Diversity reflects the extensive geographic distribution for this cervid in the Palearctic, interactions among sympatric assemblages of free-ranging cervids, and other ungulates and local or landscape effects related to climate [5,24]. Helminths identified in the current study and the survey reported by Bakka *et al.* [8], are a subset of this broader faunal diversity, and there are no new host records documented. In this case, absence of some parasites may indicate environmental limitations on development posed by colder climates characteristic of southern Norway and founder effects on diversity linked to ongoing geographic expansion for red deer, in addition to potential sampling biases. In this regard, and perhaps unexpected, was the complete absence of Nematodirine nematodes at the Mongstad Refinery site, including species of *Nematodirus*, which otherwise are a prominent component of cervid parasite faunas across the Palearctic [23].

Little has been done to explore the gastrointestinal helminth fauna among other wild cervids from Norway, except for one study on abomasal nematodes in wild reindeer [25]. In wild reindeer six different abomasal nematode species were found with *Ostertagia gruehneri/O. arctica* being dominant. The only abomasal nematode reported in wild reindeer shared by red deer in the present study was *T. axei*. However, *S. spiculoptera* has been identified in captive reindeer co-grazed with elk (*Cervus canadensis*) in North America and may be a

significant pathogen in this species [26]. Further studies of mixed cervid populations are needed, to understand if the gastrointestinal parasites found in red deer in the present study may establish (or are already shared) by other cervids species in Norway, and more broadly in Fennoscandia [12]. The need for detailed comparative baselines, linked to archived and identified specimens in museum repositories, is indicated by the effects of accelerating climate change and environmental disruption which are influencing the distributions of cervids and other ungulates as hosts, their parasites, and patterns of disease [27].

Conclusions

The present study was carried out in an isolated wild population of red deer occurring within the core geographic range for this cervid in Norway. Although our sample population was relatively small, results for diversity are expected to be representative for helminth species richness for red deer in this region in the northern extent of the range for *Cervus elaphus*. The intensity and abundance of abomasal nematodes was higher in this isolated population than reported in similar studies of red deer populations across Europe. The species of gastrointestinal helminths recorded were a reduced subset of gastrointestinal nematodes typical of this cervid across an extensive geographic range in Eurasia.

Competing interests

The authors declare that they have no competing interests.

Authors' contributions

RKD carried out parasite isolation, species identification and performed data analysis, SK helped with parasite identification, KM carried out the field work, EH carried out parasite identification, and KH conceived the study. All authors contributed to drafting the manuscript and have read and approved the final manuscript.

Acknowledgments

We thank Arthur Abrams and Patricia Piliitt at the US National Parasite Collection, USDA, Beltsville, Maryland, for assistance in preparing nematodes for examination and identification. We also thank Bjørnar Ytrehus and Anja Gahr Langangen, at the Norwegian Veterinary Institute, for their respective help with the field work and with the gastrointestinal washes and counting. We would also like to thank Statoil Mongstad for granting us access to this red deer population. This study was financed by the Norwegian Veterinary Institute as part of the Health Surveillance Program for Wild Cervids.

Ethical Approval

The animals included in this study were part of larger group that were being culled to reduce population levels. Austrheim Municipality authorised this extraordinary cull, at a meeting on 30/11/2006 (Reference number 109/06, Archive number 06/748), because of anticipated animal welfare issues, given the very high red deer population density and limited nutritional resources at the site. Further ethical approval for sampling was not applied for since the animals were not being culled to participate in the study, rather the researchers took advantage of animals that had been culled to investigate parasitic burdens. The sampling was carried out under the auspices of the Cervid Health Surveillance Program (HOP).

Author details

¹Norwegian Veterinary Institute, Pb 750 Sentrum, NO-0106 Oslo, Norway. ²Department of Ecosystem and Public Health, Faculty of Veterinary Medicine, University of Calgary, 3330 Hospital Drive NW, Calgary, Alberta T2N 4 N1, Canada. ³Canadian Cooperative Wildlife Health Centre-Alberta Node, Faculty of Veterinary, Medicine, University of Calgary, 3330 Hospital Drive NW, Calgary, Alberta T2N 4 N1, Canada. ⁴US National Parasite Collection, USDA, Agricultural Research Service, BARC East No. 1180, Beltsville, MD 20705, USA. ⁵Current address: HD-diagnostikk AS, Kalkbrennerveien 12, NO-1487 Hakadal, Norway.

Received: 26 May 2014 Accepted: 31 August 2014

Published online: 08 October 2014

References

1. Reimers E, Langvatn R, Sæther BE, Jacobsen H, Andersen R, Østbye E, Bjørnsen B, Skogland T, Bretten S: **Cloven-hoofed Deer [in Norwegian]**. In *Mammals 2*. Edited by Semb-Johansson A, Frisli RJW. Oslo: Cappelen Forlag AS; 1990:75–190.
2. Solberg EJ, Strand O, Veiberg V, Andersen R, Heim M, Rolandsen CM, Holmstrøm F, Solem M, Eriksen R, Astrup R: *Wild Cervids 2009: Annual report of Wild Cervid Surveillance Program [in Norwegian]*. Trondheim: Norsk Institutt for Naturforskning (NINA); 2010. NINA Rapport 584: 77 pp.
3. Statistics Norway: **Hunting statistics**. <http://ssb.no/jord-skog-jakt-og-fiskeri/statistikker/hjortejakt> 2010: [accessed 20/05/2014].
4. Body G, Ferté H, Gaillard JM, Delorme D, Klein F, Gilet-Fromont E: **Population density and phenotypic attributes influence the level of nematode parasitism in roe deer**. *Oecologia* 2011, **167**:635–646.
5. Hoberg EP, Kocan AA, Rickard LG: **Gastrointestinal strongyles in wild ruminants**. In *Parasitic Diseases of Wild Mammals*. Edited by Samuel WM, Pybus MJ, Kocan AA. Ames, Iowa: Iowa State University Press; 2001:193–227.
6. Albon S, Stien A, Irvine R, Langvatn R, Ropstad E, Halvorsen O: **The role of parasites in the dynamics of a reindeer population**. *Proc Biol Sci* 2002, **169**:1625–1632.
7. Stien A, Irvine JR, Ropstad E, Halvorsen O, Langvatn R, Albon SD: **The impact of gastrointestinal nematodes on wild reindeer: experimental and cross-sectional studies**. *J Anim Ecol* 2002, **71**:937–945.
8. Bakka K, Haukalid S, Sætre EM: *Red Deer Endoparasites [in Norwegian]*, Final year thesis DVM. Oslo: Norwegian School of Veterinary Science; 2006:1–63.
9. Sleeman DP: **Parasites of deer in Ireland**. *J Life Sci R Dubl Soc* 1983, **4**:203–210.
10. Zaffaroni E, Manfredi MT, Citterio C, Sala M, Piccolo G, Lanfranchi P: **Host specificity of abomasal nematodes in free ranging alpine ruminants**. *Vet Parasitol* 2000, **90**:221–230.
11. Manfredi MT, Di Cerbo AR, Tranquillo V, Nassuato C, Pedrotti L, Piccolo G: **Abomasal nematodes of the red deer *Cervus elaphus* in north-eastern Italy**. *J Helminthol* 2007, **81**:247–253.
12. Santín-Duran M, Alunda JM, Hoberg EP, de la Fuente C: **Abomasal parasites in wild sympatric cervids, red deer, *Cervus elaphus* and fallow deer, *Dama dama*, from three localities across central and western Spain; relationship to host density and park management**. *J Parasitol* 2004, **90**:1378–1386.
13. Santín-Duran M, Alunda JM, Hoberg EP, de la Fuente C: **Age distribution and seasonal dynamics of abomasal helminths in wild red deer from central Spain**. *J Parasitol* 2008, **94**:1031–1037.
14. Drózd J: **Polymorphism in the Ostertaginae Lopez-Neyra, 1947 and comments on the systematics of these nematodes**. *Syst Parasitol* 1995, **32**:91–95.
15. Lichtenfels JR, Hoberg EP: **The systematics of nematodes that cause ostertagiasis in domestic and wild ruminants in North America: an update and a key to species**. *Vet Parasitol* 1993, **46**:33–53.
16. Kistner TP, Trainer CE, Hartmann NA: **A field technique for evaluating physical condition of deer**. *Wildlife Soc B* 1980, **8**:11–17.
17. Umur S, Gürler AT, Beyhan YE, Bölükbaş CS, Açıci M: **Two new nematode species for Turkey helminth fauna in roe deer (*Capreolus capreolus*), *Spiculoptera spiculoptera* (Guschanskia, 1931) and minor morph S. (*Rinadia mathevossiani* (Ruchliadev, 1948))**. *Kafkas Univ Vet Fak Derg* 2011, **17**:649–654.
18. Drózd J: **Studies on helminths in helminthiasis in Cervidae. I. Revision of the subfamily *Ostergaiinae* Sarwar, 1956 and an attempt**

- to explain the phylogenesis of its representatives. *Acta Parasitol Pol* 1965, **XII**:445–481.
19. Hoberg EP, Lichtenfels JR, Piliitt PA: Comparative morphology of *Ostertagia mossi* and *Ostertagia dikmansi* (Trichostrongylidae) from *Odocoileus virginianus* and comments on other *Ostertagia* spp. from the Cervidae. *Syst Parasitol* 1993, **24**:111–127.
 20. Ortiz JM, Goyen M, Alonso F: First report of two polymorphic species of *Ostertagia* (Nematoda: Trichostrongylidae) in *Cervus elaphus* in Spain: *O. leptospicularis* and *O. kolchida*. *Res Rev Parasitol* 1996, **56**:221–223.
 21. Milner J, Wedul S, Laaskonen S, Oksanen A: Gastrointestinal nematodes of moose (*Alces alces*) in relation to supplementary feeding. *J Wildl Dis* 2013, **49**:69–79.
 22. Andrews JRH: The arthropod and helminth parasites of red deer (*Cervus elaphus* L) in New Zealand. *Trans R Soc NZ (Zool)* 1964, **5**:97–127.
 23. Priadko EI: *Gel'minty Olenei*. Alma-Ata, Kazakhstan: Akademiia Nauk Kazakhskoi SSR, Institut Zoologii. Izdatel'stvo Nauka Kazakhskoi SSR; 1976:223.
 24. Suarez VH, Cabaret J: Similarities between species of the Ostertagiinae (Nematoda: Trichostrongyloidea) in relation to host specificity and climatic environment. *Syst Parasitol* 1991, **20**:179–185.
 25. Bye K: Abomasal nematodes from three Norwegian wild reindeer populations. *Can J Zool* 1987, **65**:677–680.
 26. deBruyn NP: *Gastrointestinal nematodes of western Canadian cervids: molecular diagnostics, faunal baselines and management considerations*, Master of Science Thesis. Calgary, Canada: University of Calgary; 2010.
 27. Hoberg EP, Kutz SJ, Cook JA, Galaktionov K, Haukisalmi V, Henttonen H, Laaskonen S, Makarikov A, Marcogliese DJ: **Parasites**. In *Arctic Biodiversity Assessment: Status and Trends in Arctic Biodiversity*. Edited by Meltofte H. Akureyi, Iceland: Conservation of Arctic Flora and Fauna; 2013:529–557.

doi:10.1186/s13028-014-0059-x

Cite this article as: Davidson *et al.*: Gastrointestinal parasites in an isolated Norwegian population of wild red deer (*Cervus elaphus*). *Acta Veterinaria Scandinavica* 2014 **56**:59.

Submit your next manuscript to BioMed Central
and take full advantage of:

- Convenient online submission
- Thorough peer review
- No space constraints or color figure charges
- Immediate publication on acceptance
- Inclusion in PubMed, CAS, Scopus and Google Scholar
- Research which is freely available for redistribution

Submit your manuscript at
www.biomedcentral.com/submit

