

REVIEW

Open Access

Early postnatal low-protein nutrition, metabolic programming and the autonomic nervous system in adult life

Júlio Cezar de Oliveira¹, Sabrina Grassioli², Clarice Gravena¹ and Paulo Cezar Freitas de Mathias^{1*}

Abstract

Protein restriction during lactation has been used as a rat model of metabolic programming to study the impact of perinatal malnutrition on adult metabolism. In contrast to protein restriction during fetal life, protein restriction during lactation did not appear to cause either obesity or the hallmarks of metabolic syndrome, such as hyperinsulinemia, when individuals reached adulthood. However, protein restriction provokes body underweight and hypoinsulinemia. This review is focused on the regulation of insulin secretion and the influence of the autonomic nervous system (ANS) in adult rats that were protein-malnourished during lactation. The data available on the topic suggest that the perinatal phase of lactation, when insulted by protein deficit, imprints the adult metabolism and thereby alters the glycemic control. Although hypoinsulinemia programs adult rats to maintain normoglycemia, pancreatic β -cells are less sensitive to secretion stimuli, such as glucose and cholinergic agents. These pancreatic dysfunctions may be attributed to an imbalance of ANS activity recorded in adult rats that experienced maternal protein restriction.

Keywords: Lactation, Metabolic programming, Insulin secretion, Pancreatic islets, Autonomic nervous system

Introduction

The developmental origins of health and disease (DOHaD) hypothesis, which stipulates that adult metabolic disease may be programmed during the perinatal stage, has been tested in several experimental animal models. A large amount of evidence suggests that the etiology of obesity is not only related to food abundance but also to food restriction during early life [1-5]. There are numerous data showing that nutrient deprivation to the fetus increases the risk of developing metabolic disease in adult life [6,7]. Lactation, similarly to uterine life, is a very important phase for brain development, in rodent species in particular and, thus, constitutes another sensitive window during which nutritional insults can lead to the programming of adult metabolic disease [8,9]. Indeed, over nutrition during lactation provokes obesity and hyperinsulinemia, among other hallmarks of metabolic

syndrome, whereas under nutrition permanently decreases body weight and causes metabolic changes. Because insulin plays a key role in the genesis of metabolic disease, this review will be dedicated to the effects of malnutrition during lactation on the regulation of insulin secretion via putative modifications of the autonomic nervous system (ANS).

Autonomic nervous system and metabolism

One of the remarkable roles of the ANS is to help the central nervous system regulate the metabolism. Functioning as a bi-directional data conduit, afferent and efferent trunk nerves inform the brain regarding the peripheral metabolic status and return signals to the different tissues to maintain the metabolic homeostasis, respectively. The electrical stimulation of the ventromedial hypothalamic nucleus induces the immediate activation of hepatic glycogenolysis [10], whereas the stimulation of the lateral hypothalamus leads to a prompt enhancement of glycogen synthesis that allows an increase in blood glucose levels [11]. Both effects are mediated by the ANS and by the sympathetic and

* Correspondence: pmathias@uem.br

¹Paulo Cezar de Freitas Mathias; Department of Cell Biology and Genetics Laboratory of Secretion Cell Biology, State University of Maringá, Block H67, room 19, State University of Maringá/UEM - Colombo Avenue 5970, 87020-900 Maringá, PR, Brazil

Full list of author information is available at the end of the article

parasympathetic branches [12]. The hepatic vagus nerve senses glucose production in the liver and sends signals to the central nervous system, which integrates this message to control the metabolism [13]. Indeed, central and peripheral neural signals contribute to the control of the blood glucose concentration and to the maintenance of the body energy homeostasis. These neural mechanisms are thus pivotal to the regulation of body weight. The neural control of blood glucose levels also involved many endocrine factors, particularly those released by the pancreas and the adrenal medulla. During fasting and feeding sessions, the sympathetic and parasympathetic nervous system (PNS) activities adapt to maintain normoglycemia. A network of ANS neurons acting on target endocrine cells stimulates or inhibits the release of these hormones [14]. Postprandial hyperglycemia induces an increase in the PNS activity, which, throughout the vagal ends, potentiates glucose-induced insulin release from the pancreatic β -cells. This rise in the insulin levels rapidly provokes a fall in the blood glucose levels. However, the sympathetic nervous system, through the impulses of the splanchnic neurons, stimulates the adrenal medulla chromaffin cells to secrete catecholamines (mostly adrenaline) that increase the blood glucose concentration by hepatic glucose production and by blocking insulin secretion [15]. The electrical stimulation of the vagus or the splanchnic nerve alters the insulin or glucagon output from the pancreas, respectively [16]. The deterioration of these mechanisms thus might also be involved in the modulation of body weight [17-19].

Much attention has been paid to insulin over secretion, which is observed in obesity. An imbalance of ANS activity has been suggested as one cause, among others, of this pancreatic β -cell dysfunction. In obese humans and rodents, high vagus nerve activity has been observed, whereas reduced sympathetic tonus has been reported [20-23]. However, although less attention has been focused on the pathophysiology of the onset of body underweight, several studies have reported that the ANS activity is altered in under- or malnourished organisms [24,25]. After weaning, rats fed a chronically protein-deficient diet exhibited low activity of the vagus nerve, whereas high sympathetic activity was recorded, and these data were in agreement with a low insulin response to glucose [25]. In another study, pancreatic islets isolated from protein-restricted rats showed weak glucose and cholinergic insulin tropic responses [24], suggesting that the pancreatic β -cell dysfunction may be attributed to altered ANS activity in these underweight animals, as represented in schematic Figure 1.

Food abundance or restriction with regard to body weight control involves changes in metabolic homeostasis and ANS balance activity. Although the secretion of

insulin by the pancreatic β -cells is increased in people who were overweight, it is diminished in people who were underweight. Changes in the ANS activity may constitute the mechanisms underlying the β -cell dysfunction: the high PNS tonus observed in obese individuals constantly potentiates insulin secretion, whereas the low activity reported in underweight individuals is associated with a weak cholinergic insulin tropic effect [26].

With the growing worldwide obesity epidemic, including huge populations in developing countries, such as China, India, Mexico and Brazil, the causes of this health and economic catastrophe have been increasingly studied [27-30]. It is well known that metabolic syndrome and obesity exhibit a high correlation with low or absent physical exercise practices and the consumption of calorie-rich diets in developing countries; however, although the inhabitants may actually experience a nutrition transition, high levels of overweight and obese individuals could not be justified solely by diet and physical inactivity, other hallmarks, such as metabolic programming by the under nutrition early in life and epigenetic modification could also be underlining the obesity onset.

Under nutrition early in life and epigenetic modifications, association with metabolic diseases risk

In addition to the pathophysiological aspects that have emerged from studies on metabolic programming caused by environmental insults during fetal life [31,32], another interesting point that is relevant to this issue is the role of epigenetic changes in the increased risk of developing metabolic diseases, such as type 2 diabetes and obesity, later in life. Epigenetic mechanisms, such as DNA methylation and/or nucleoprotein acetylation/methylation, are crucial to the normal/physiological development of several tissues in mammals, and they involve several mechanisms to guarantee fluctuations of enzymes and other proteins that regulate the metabolism [33,34]. As previously reviewed, the intrauterine phase of development is particularly important for the genomic processes related to genes associated with metabolic pathways [34-36]. Therefore, this phase of life may be particularly important for nutritional disturbance. In humans who experienced the Dutch famine Winter in 1944-1945 and in rats that were deprived of food *in utero*, epigenetic modifications were detected in the insulin-like growth factor 2 (IGF2) and pancreatic and duodenal home box 1 (Pdx1), which are the major factors involved in pancreas development and pancreatic β -cell maturation [37,38]. Although it is known that the pancreas and the pancreatic β -cells develop/maturate during the embryonic phase [39], the postnatal life is also crucial for the maintenance processes that control the β -cell mass, such as proliferation, neogenesis and

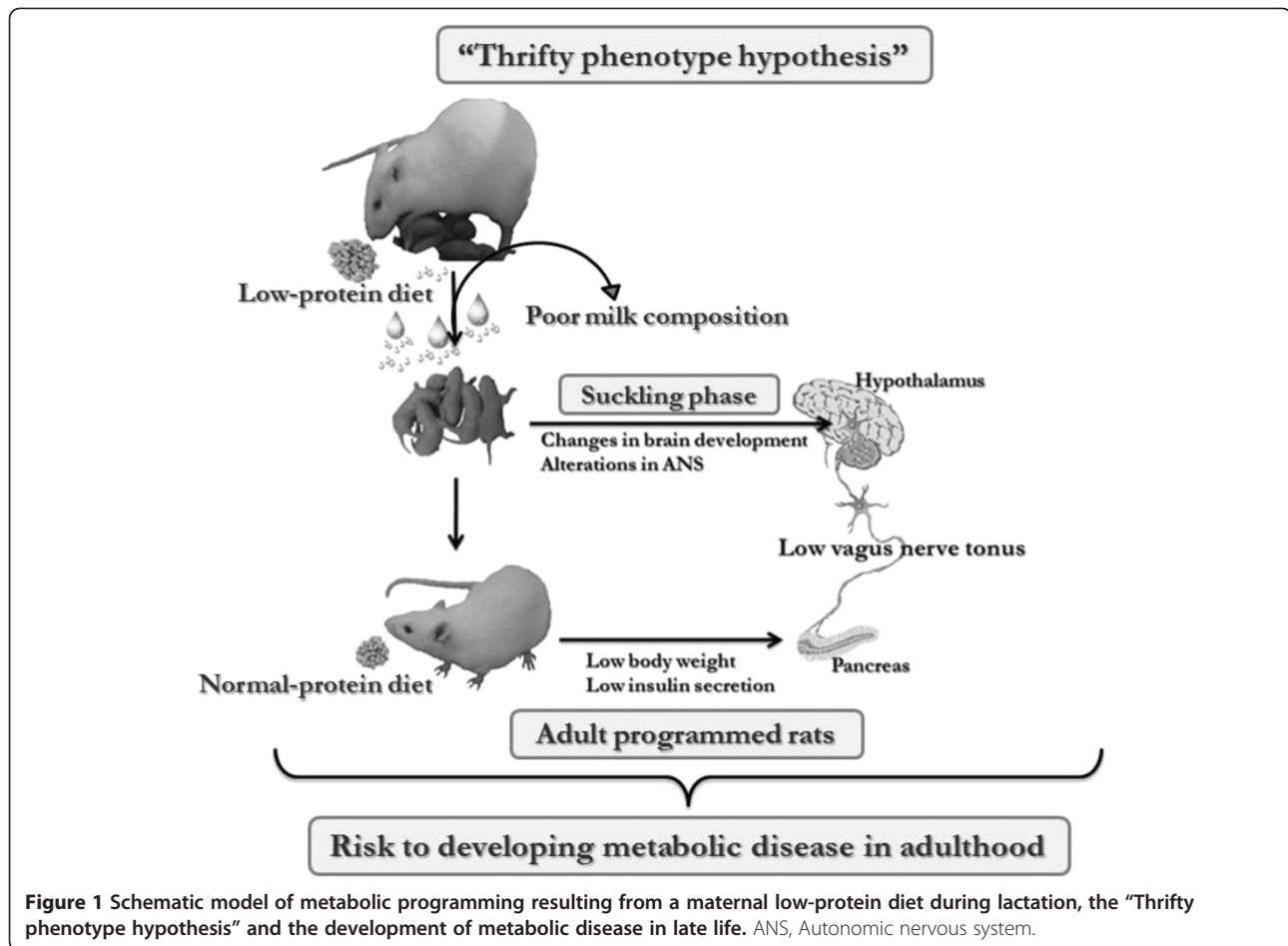


Figure 1 Schematic model of metabolic programming resulting from a maternal low-protein diet during lactation, the "Thrifty phenotype hypothesis" and the development of metabolic disease in late life. ANS, Autonomic nervous system.

apoptosis [40]. Nevertheless, no data on metabolic programming as the result of protein-restricted diet during lactation only have yet been reported, and no direct association with epigenetic modifications has been observed; on the other hand, because stressor insults during the milk suckling phase can lead to disturbances in glucose metabolism, hypothalamic neurons, ANS activity and β -cell mass/function of the pancreatic β -cells in rodents, further studies are needed on this topic.

Nutritional restriction to the fetus: a risk of obesity onset

Two decades ago, it was observed that low birth weight was related to adult chronic, non-transmissible diseases, such as type 2 diabetes, cardiovascular disease and obesity [2]. It has been speculated that a nutritional injury during perinatal growth, including uterine and early postnatal life, may contribute to adapting the adult metabolism toward nutritional restriction. However, if an abundant diet is offered to people who have been undernourished during the perinatal life, this opportunity induces a metabolic shift toward the storage of energy and high fat tissue accumulation, thus leading to

high risks of the onset of metabolic/coronary diseases onset [1]. These observations led to the introduction of the term DOHaD (Developmental Origins of Health and Disease) previously known as the Barker thrifty phenotype hypothesis [41]. Currently, the concept of DOHaD is extended to any other insults during perinatal life, pregnancy and/or lactation, such as underweight, overweight, diabetic or hyperplastic mothers. This concept also includes any type of stressful situations that may predispose babies or pups to develop metabolic disorders when they reach adulthood [42-47].

Food deficit in lactation does not cause obesity

Using perinatal under nutrition experimental models, it is important to score which hallmarks are presented by programmed organism, unless we can misunderstand DOHaD concepts. It is known that restricting the food supply to a fetus may cause obesity, hyperinsulinemia and peripheral insulin resistance, among other clinical signals of metabolic syndrome, in adult life [2]. In contrast, over nutrition during lactation also induced obesity with the same metabolic abnormalities observed in the

offspring from mothers undernourished during pregnancy [48,49], and food deficiency during the lactation period usually leads to underweight, not only in the young but also in the adults, even when dietetic recovery is available. Adult rats from mothers that experienced protein restriction during lactation show impairment of glycemic homeostasis. These programmed rats can no longer secrete as much insulin as the rising blood glucose levels demand [8]. However, the high insulin-sensitivity of their tissues is able to maintain normoglycemia [50]. Similar results were found in human populations that were poorly fed at the perinatal stage [51]. Pancreatic islets isolated from programmed lean adult rats show low glucose insulin tropic responses [52-54]. These results demonstrate that a protein-poor diet during lactation, in contrast to chronic protein malnutrition during the intra-uterine and post-weaning phases, does not induce obesity and/or diabetes but rather reduces the pancreatic β -cell function. This adaptation allows the rat pancreas to release a low amount of insulin in response to altered metabolic demand. High insulin sensitivity may further impact the metabolism when the caloric intake increases, potentially contributing to future overweight followed by the hallmarks of metabolic syndrome, such as insulin resistance [55]. Consistent with this possibility, it has been reported that a 50% global food restriction during the last third of pregnancy and lactation, which are crucial periods for rodent brain development, led to modifications of the stress neuroendocrine systems, such as increased hypothalamus-pituitary-adrenal axis activity [56] and decreased sympathoadrenal system activity in adult male rats under resting conditions [57]. However, when a normal diet was offered, the adult male rats exhibited underweight rather than obesity, suggesting that under nutrition during lactation, at least in rodents, prevents individuals from becoming obese. In addition, it has been reported that prenatally undernourished rats nursed by control mothers exhibit a rapid catch-up growth and are more susceptible to developing obesity and features of metabolic syndrome [58]. In contrast, the same animals, if nursed by their own mothers, did not experience catch-up growth and exhibited only subtle metabolic alterations [59]. Taken together, these data indicate that lactation is a very sensitive period that is critical to programming the metabolism of adult rats and suggest that under nutrition during this period may protect rats from developing obesity. However, it remains to be determined whether this "protective" effect of under nutrition during lactation persists in the presence of a high caloric diet or physical inactivity.

Sex dimorphism in metabolic programming

Importantly, some dysfunctions associated with metabolic programming are not similar between males and

females. These dysfunctions are dependent not only on the window in which the nutritional disturbance (under/over nutrition) occurred but also on physiological differences between the genders [60-62]. As previously reported, glucose homeostasis, insulin sensitivity, pancreatic β -cell function and adipose tissue depots, among other metabolic hallmarks of adulthood, are changed by early maternal protein restriction [63-67]. These changes, including their magnitude, are expressed in a different manner both in female and male rats. Protein malnourishment during lactation causes greater insulin sensitivity in males than in females [63,67], and this is also observed when the protein restriction occurs during pregnancy and lactation, which leads to higher insulin sensitivity in males [66,67], while insulin resistance is observed in females [65]. However, contradicting data have also been reported [64]. Differences in glucose homeostasis impairments are observed dependent on gender in adult rats that were protein restricted prenatally; however, the period of nutritional insult is important to determine both the magnitude and the quality of the metabolic disturbance.

Programmed metabolism and insulin secretion-coupling process

What are the mechanisms involved in the low glucose insulin tropic response observed in low protein-programmed lean rats? The pancreatic β -cells secrete insulin when stimulated mostly by glucose. However, several nutrients, such as amino acids, fatty acids, and their metabolites, can also stimulate cellular metabolism and increase ATP production [68,69]. ATP-sensitive potassium channels (K_{ATP}) are inactivated by an increased ATP/ADP ratio, which provokes membrane depolarization and subsequently the activation of voltage-dependent calcium channels [70,71]. These ionic changes increase the intracellular calcium concentration, which is involved in the export of insulin to the bloodstream. However, experimental evidence indicates that glucose may also stimulate insulin secretion by alternative pathways involving K_{ATP} channels [72]. The use of adult rats that were protein-restricted during lactation allowed researchers to verify whether cell metabolism and cell calcium handling are involved in β -cell dysfunction. Although the results showed no change in either β -cell metabolism or calcium buffering, an impairment of cholinergic transduction was reported [73]. Surprisingly, diabetic rats transplanted with pancreatic islets from adult rats that were protein-restricted during lactation showed improvement of their fasting glycemic, which may indicate that changes in β -cell activity provoked by poor perinatal protein nutrition are not permanent and could open possibilities to new therapeutics to treat metabolic diseases [74].

Programmed metabolism and insulin tropic effects of neurotransmitters

Insulin release is modulated by non-nutrient secretagogues, such as neurotransmitters, which enhance or inhibit glucose-stimulated insulin secretion. Pancreatic β -cells contain several receptors for neurotransmitters and Neuropeptide, such as adrenoceptors and cholinergic muscarinic receptors (mAChRs). These receptors are stimulated by efferent signals from the central nervous system, including the ANS, throughout their neural ends for pancreatic β -cells [75]. During blood glucose level oscillations, the β -cells receive inputs from the parasympathetic and sympathetic systems to participate in glycemic regulation. Overall, acetylcholine promotes the potentiation of glucose-induced insulin secretion, whereas noradrenaline and adrenaline inhibit this response [19]. Before and during food intake, vagus nerve activity is responsible for the rise in insulin blood levels. These effects are mediated by acetylcholine, which activates the mAChRs in the β -cell plasma membrane. Pancreatic islets isolated from rats that had been nursed by dams fed with a low-protein (4-8%) diet during the first 14 days of the lactation period showed a weak cholinergic response [53,73]. To date, five subtypes of receptors belonging to the muscarinic family (M_1 - M_5) have been identified in neurons and other cell types [76,77]. Using the RT-PCR technique and different muscarinic antagonists, four subtypes (M_1 - M_4) have been shown to be present in insulin-secreting cell lines [78], whereas other studies have shown that 2 muscarinic subtypes (M_1 and M_3), and in a lesser quantity, M_5 , are expressed in rat pancreatic islets [79]. Because pancreatic islets contain four different endocrine cell types, care must be taken when dealing with the mAChR subtypes of pancreatic β -cells. Functional studies of mAChR subtypes have revealed that M_1 and particularly M_3 are the receptors that are involved in the insulin tropic effect of acetylcholine [80,81]. Interestingly, it was reported that M_3 mAChR gene knockout mice are underweight, hypophagic and hypoinsulinemic [82], as are adult rats that were protein-restricted during lactation. The pancreatic islets from M_3 mAChR mice (-/-) showed a reduced secretory response to cholinergic agonists [83]. Although it has not been demonstrated, it is possible that metabolic programming induced by early protein malnutrition causes a reduction of M_3 mAChR in the pancreatic β -cell. Recently, in studies using transgenic mice in which the pancreatic β -cell M_3 mAChRs are chronically stimulated, an improvement of glycemic control has been observed, even when the mice received a high-fat diet [84]. These data may indicate that PNS tonus, intense or weak, can modulate β -cell function through muscarinic receptor activities. Three-month-old male adult offspring of mothers that received 4% protein during lactation exhibited low PNS activity. Fasting normoglycemia and

hypoinsulinemia, glucose intolerance and low plasma glucose and insulin concentrations during an intravenous glucose tolerance test were observed in the adult offspring of malnourished mothers [53]. In these animals, acetylcholine or the blockage of the α_2 -adrenoceptors increased the plasma glucose and insulin concentrations, whereas atropine or the stimulation of the α_2 -adrenoceptors did not modify these parameters. In addition, islets from postnatally malnourished animals exhibited decreased insulin secretion in response to low glucose and carbachol. By contrast, changes in the sympathetic activity were not observed. Taken together, these data suggest that the hypoinsulinemia observed in the adult offspring of malnourished mothers might be caused by alterations in the regulation of glucose-induced insulin secretion via, in part, ANS modulation. However, other authors using maternal protein restriction to 8% protein during the entire lactation period concluded that the changes in the metabolism, such as hypoinsulinemia and low fat deposition, are due to the enhanced activity of the sympathoadrenal axis in 180-day-old rats [85]. The discrepancies between these studies might be because of the different regimens used or because the ages of the adult rats were different. In chronically protein-malnourished rats, a decrease in the PNS activity and a strong increase in the sympathetic nervous system activity were observed, as demonstrated by recordings obtained directly from the nerves of 90-day-old rats [25]. Recently, a low PNS activity was observed in the adult offspring of malnourished mothers, as directly recorded from the superior vagus nerve branch, whereas the firing rates of the sympathetic branch were unchanged [5]. Although the recorded electrical signal of vagus nerve activity is considered to be a combination of afferent and efferent signals, the firing rates observed in this study represent part of the electrical signal that travels from the brain to the thoracic and visceral organs, such as the pancreas [86]. The reduced cholinergic insulin tropic response of the pancreatic islets from metabolically programmed rats does not suggest an up-regulation effect due to the weak vagal activity, as expected. In contrast, studies indicate a low secretory sensitivity to the cholinergic stimulus in the β -cells from adult rats that were protein-malnourished during lactation [53,73,86]. The nature of the mAChR subfamilies that are implicated in the weak cholinergic response of the β -cell in the offspring from malnourished mothers is still unknown and clearly requires further investigation.

Conclusions

To date, the body of evidence indicates that maternal protein restriction during lactation programs the metabolism to reserve less energy in rat adulthood. Although several studies have shown that perinatal nutritional

alterations modify both stress neuroendocrine systems, including the hypothalamus-pituitary-adrenal axis, and the sympathoadrenal system, little is known concerning the PNS in this context. However, each aspect of this system is involved in the regulation of energy metabolism. We have shown that adult male rat offspring from whose mothers were protein-restricted during lactation exhibit a low PNS activity. Rodent lactation is a crucial phase for brain development and could be considered similar to the final one-third of the human gestation period [9,87]. Although the mechanism by which protein restriction during lactation induces permanent changes in the metabolism is still largely unknown, evidence suggests that ANS changes may contribute to the impairment of glycemic homeostasis in metabolically programmed rats. Whether these modifications of the ANS will favor or impede the features of metabolic syndrome remains controversial, and this issue warrants further investigation.

Abbreviations

ANS: Autonomic nervous system; DOHaD: Developmental origins of health and disease; PNS: Parasympathetic nervous system; K_{ATP} : ATP-sensitive potassium channels; mAChRs: Cholinergic muscarinic receptors; M_3 mAChRs: Cholinergic muscarinic receptors subtype M_3 .

Competing interests

The author declares that there are no conflicts of interest.

Authors' contributions

JCde O and PCFM designed, wrote and edited the manuscript; SG and CG were involved in revising critically the manuscript. All authors read and approved the final manuscript.

Acknowledgements

The authors are grateful to Professor Dr. Didier Vieau for his revision of the manuscript.

Funding

This work was supported by the Brazilian Federal Foundation, the Conselho Nacional de Desenvolvimento Científico e Tecnológico (CNPq), the Coordenação de Aperfeiçoamento de Pessoal de Nível Superior (CAPES), and the Paraná Science Foundation (Fundação Araucária).

Author details

¹Paulo Cezar de Freitas Mathias; Department of Cell Biology and Genetics Laboratory of Secretion Cell Biology, State University of Maringá, Block H67, room 19, State University of Maringá/UEM - Colombo Avenue 5970, 87020-900 Maringá, PR, Brazil. ²Department of General Biology, State University of Ponta Grossa, General Carlos Cavalcanti Avenue 4847, 84030-900 Ponta Grossa, PR, Brazil.

Received: 13 June 2012 Accepted: 4 September 2012

Published: 11 September 2012

References

- Hales CN, Barker DJ: The thrifty phenotype hypothesis. *Br Med Bull* 2001, **60**:5–20.
- Hales CN, Barker DJ, Clark PM, Cox LJ, Fall C, Osmond C, Winter PD: Fetal and infant growth and impaired glucose tolerance at age 64. *BMJ* 1991, **303**:1019–1022.
- Molendi-Coste O, Laborie C, Scarpa MC, Montel V, Vieau D, Breton C: Maternal perinatal undernutrition alters postnatal development of chromaffin cells in the male rat adrenal medulla. *Neuroendocrinology* 2009, **90**:54–66.
- Sullivan EL, Grove KL: Metabolic imprinting in obesity. *Forum Nutr* 2010, **63**:186–194.
- de Oliveira JC, Scomparin DX, Andreatzi AE, Branco RC, Martins AG, Gravena C, Grassioli S, Rinaldi W, Barbosa FB, Mathias PC: Metabolic imprinting by maternal protein malnourishment impairs vagal activity in adult rats. *J Neuroendocrinol* 2011, **23**:148–157.
- Kimani-Murage EW, Kahn K, Pettifor JM, Tollman SM, Dunger DB, Gomez-Olive XF, Norris SA: The prevalence of stunting, overweight and obesity, and metabolic disease risk in rural South African children. *BMC Publ Health* 2010, **10**:158.
- Sawaya AL, Roberts S: Stunting and future risk of obesity: principal physiological mechanisms. *Cad Saude Publica* 2003, **19**(Suppl 1):S21–S28.
- Moura AS, Carpinelli AR, Barbosa FB, Gravena C, Mathias PC: Undernutrition during early lactation as an alternative model to study the onset of diabetes mellitus type II. *Res Commun Mol Pathol Pharmacol* 1996, **92**:73–84.
- Lesage J, Sebaai N, Leonhardt M, Dutriez-Casteloot I, Breton C, Deloof S, Vieau D: Perinatal maternal undernutrition programs the offspring hypothalamo-pituitary-adrenal (HPA) axis. *Stress* 2006, **9**:183–198.
- Shimazu T: Central nervous system regulation of liver and adipose tissue metabolism. *Diabetologia* 1981, **20**(Suppl):343–356.
- Ishikawa K, Shimazu T: Circadian rhythm of liver glycogen metabolism in rats: effects of hypothalamic lesions. *Am J Physiol* 1980, **238**:E21–E25.
- Shimazu T: Innervation of the liver and gluoregulation: roles of the hypothalamus and autonomic nerves. *Nutrition* 1996, **12**:65–66.
- Nagai K, Nagai N, Shimizu K, Chun S, Nakagawa H, Nijijima A: SCN output drives the autonomic nervous system: with special reference to the autonomic function related to the regulation of glucose metabolism. *Prog Brain Res* 1996, **111**:253–272.
- Ahren B: Regulation of insulin secretion by nerves and neuropeptides. *Ann Acad Med Singapore* 1999, **28**:99–104.
- Wilke RA, Hillard CJ: Decreased adrenal medullary catecholamine release in spontaneously diabetic BB-Wistar rats. Role of hypoglycemia. *Diabetes* 1994, **43**:724–729.
- Gilon P, Henquin JC: Mechanisms and physiological significance of the cholinergic control of pancreatic beta-cell function. *Endocr Rev* 2001, **22**:565–604.
- Chesnut RM, Gautille T, Blunt BA, Klauber MR, Marshall LF: Neurogenic hypotension in patients with severe head injuries. *J Trauma* 1998, **44**:958–963. discussion 963–954.
- Tew EM, Fearon A, Anderson PN, Burnstock G: Tyrosine hydroxylase-containing fibres extend from the rat corpus striatum into grafts of muscularis externa and myenteric plexus. *Neurosci Lett* 1995, **194**:33–36.
- Ahren B: Autonomic regulation of islet hormone secretion—implications for health and disease. *Diabetologia* 2000, **43**:393–410.
- Inoue S, Bray GA: An autonomic hypothesis for hypothalamic obesity. *Life Sci* 1979, **25**:561–566.
- Rohner-Jeanrenaud F: Neuroendocrine regulation of nutrient partitioning. *Ann N Y Acad Sci* 1999, **892**:261–271.
- Scomparin DX, Gomes RM, Grassioli S, Rinaldi W, Martins AG, de Oliveira JC, Gravena C, de Freitas Mathias PC: Autonomic activity and glycemic homeostasis are maintained by precocious and low intensity training exercises in MSG-programmed obese mice. *Endocrine* 2009, **36**:510–517.
- Vojarova De Courten B, Weyer C, Stefan N, Horton M, DelParigi A, Havel P, Bogardus C, Tataranni PA: Parasympathetic blockade attenuates augmented pancreatic polypeptide but not insulin secretion in Pima Indians. *Diabetes* 2004, **53**:663–671.
- Ferreira F, Filiputti E, Arantes VC, Stoppiglia LF, Araujo EP, Delghingaro-Augusto V, Latorraca MQ, Toyama MH, Boschero AC, Carneiro EM: Decreased cholinergic stimulation of insulin secretion by islets from rats fed a low protein diet is associated with reduced protein kinase alpha expression. *J Nutr* 2003, **133**:695–699.
- Leon-Quinto T, Magnan C, Portha B: Altered activity of the autonomous nervous system as a determinant of the impaired beta-cell secretory response after protein-energy restriction in the rat. *Endocrinology* 1998, **139**:3382–3389.
- Tataranni PA: From physiology to neuroendocrinology: a reappraisal of risk factors of body weight gain in humans. *Diabetes Metab* 1998, **24**:108–115.
- James WP: The epidemiology of obesity: the size of the problem. *J Intern Med* 2008, **263**:336–352.

28. Hallal PC, Azevedo MR, Reichert FF, Siqueira FV, Araujo CL, Victora CG: Who, when, and how much? Epidemiology of walking in a middle-income country. *Am J Prev Med* 2005, **28**:156–161.
29. Bunag RD, Takeda K: Sympathetic hyperresponsiveness to hypothalamic stimulation in young hypertensive rats. *Am J Physiol* 1979, **237**:R39–R44.
30. Cano G, Card JP, Sved AF: Dual viral transneuronal tracing of central autonomic circuits involved in the innervation of the two kidneys in rat. *J Comp Neurol* 2004, **471**:462–481.
31. Lucas A: Programming by early nutrition: an experimental approach. *J Nutr* 1998, **128**:401S–406S.
32. Heindel JJ, Vom Saal FS: Role of nutrition and environmental endocrine disrupting chemicals during the perinatal period on the aetiology of obesity. *Mol Cell Endocrinol* 2009, **304**:90–96.
33. Bird A: DNA methylation patterns and epigenetic memory. *Genes Dev* 2002, **16**:6–21.
34. Burdige GC, Hanson MA, Slater-Jefferies JL, Lillycrop KA: Epigenetic regulation of transcription: a mechanism for inducing variations in phenotype (fetal programming) by differences in nutrition during early life? *Br J Nutr* 2007, **97**:1036–1046.
35. Guilloateau P, Zabielski R, Hammon HM, Metges CC: Adverse effects of nutritional programming during prenatal and early postnatal life, some aspects of regulation and potential prevention and treatments. *J Physiol Pharmacol* 2009, **60**(Suppl 3):17–35.
36. Attig L, Gabory A, Junien C: Early nutrition and epigenetic programming: chasing shadows. *Curr Opin Clin Nutr Metab Care* 2010, **13**:284–293.
37. Heijmans BT, Tobi EW, Stein AD, Putter H, Blauw GJ, Susser ES, Slagboom PE, Lumey LH: Persistent epigenetic differences associated with prenatal exposure to famine in humans. *Proc Natl Acad Sci U S A* 2008, **105**:17046–17049.
38. Park JH, Stoffers DA, Nicholls RD, Simmons RA: Development of type 2 diabetes following intrauterine growth retardation in rats is associated with progressive epigenetic silencing of Pdx1. *J Clin Invest* 2008, **118**:2316–2324.
39. Holness MJ, Langdown ML, Sugden MC: Early-life programming of susceptibility to dysregulation of glucose metabolism and the development of Type 2 diabetes mellitus. *Biochem J* 2000, **349**(Pt 3):657–665.
40. Chang-Chen KJ, Mullur R, Bernal-Mizrachi E: Beta-cell failure as a complication of diabetes. *Rev Endocr Metab Disord* 2008, **9**:329–343.
41. Barker DJ: The developmental origins of chronic adult disease. *Acta Paediatr Suppl* 2004, **93**:26–33.
42. Sawaya AL, Martins PA, Grillo LP, Florencio TT: Long-term effects of early malnutrition on body weight regulation. *Nutr Rev* 2004, **62**:S127–S133.
43. Plagemann A, Harder T, Dudenhausen JW: The diabetic pregnancy, macrosomia, and perinatal nutritional programming. *Nestle Nutr Workshop Ser Pediatr Program* 2008, **61**:91–102.
44. Wainford RD, Kapusta DR: Chronic high-NaCl intake prolongs the cardiorenal responses to central N/OFQ and produces regional changes in the endogenous brain NOP receptor system. *Am J Physiol Regul Integr Comp Physiol* 2009, **296**:R280–R288.
45. Ito K, Kimura Y, Hirooka Y, Sagara Y, Sunagawa K: Activation of Rho-kinase in the brainstem enhances sympathetic drive in mice with heart failure. *Auton Neurosci* 2008, **142**:77–81.
46. Ciriello J, Solano-Flores LP, Rosas-Arellano MP, Kirouac GJ, Babic T: Medullary pathways mediating the parabrachial nucleus depressor response. *Am J Physiol Regul Integr Comp Physiol* 2008, **294**:R1276–R1284.
47. Khadilkar VV, Cameron FJ, Stanhope R: Growth failure and pituitary function in CHARGE and VATER associations. *Arch Dis Child* 1999, **80**:167–170.
48. Mitrani P, Srinivasan M, Dodds C, Patel MS: Role of the autonomic nervous system in the development of hyperinsulinemia by high-carbohydrate formula feeding to neonatal rats. *Am J Physiol Endocrinol Metab* 2007, **292**:E1069–E1078.
49. Young JB: Developmental origins of obesity: a sympathoadrenal perspective. *Int J Obes (Lond)* 2006, **30**(Suppl 4):S41–S49.
50. Moura AS, Caldeira Filho JS, de Freitas Mathias PC, de Sa CC: Insulin secretion impairment and insulin sensitivity improvement in adult rats undernourished during early lactation. *Res Commun Mol Pathol Pharmacol* 1997, **96**:179–192.
51. Martins PA, Sawaya AL: Evidence for impaired insulin production and higher sensitivity in stunted children living in slums. *Br J Nutr* 2006, **95**:996–1001.
52. Barbosa FB, Gravena C, Mathias P, Moura AS: Blockade of the 32P phosphate flush of pancreatic beta cells from adult rats who received a low-protein diet during early lactation. *Braz J Med Biol Res* 1993, **26**:1355–1358.
53. Gravena C, Andreazzi AE, Mecabo FT, Grassioli S, Scantamburlo VM, Mathias PC: Protein restriction during lactation alters the autonomic nervous system control on glucose-induced insulin secretion in adult rats. *Nutr Neurosci* 2007, **10**:79–87.
54. Gravena C, Mathias PC, Ashcroft SJ: Acute effects of fatty acids on insulin secretion from rat and human islets of Langerhans. *J Endocrinol* 2002, **173**:73–80.
55. Reusens B, Remacle C: Programming of the endocrine pancreas by the early nutritional environment. *Int J Biochem Cell Biol* 2006, **38**:913–922.
56. Sebaai N, Lesage J, Breton C, Vieau D, Deloof S: Perinatal food deprivation induces marked alterations of the hypothalamo-pituitary-adrenal axis in 8-month-old male rats both under basal conditions and after a dehydration period. *Neuroendocrinology* 2004, **79**:163–173.
57. Laborie C, Molendi-Coste O, Breton C, Montel V, Vandenbulcke F, Grumolato L, Anouar Y, Vieau D: Maternal perinatal undernutrition has long-term consequences on morphology, function and gene expression of the adrenal medulla in the adult male rat. *J Neuroendocrinol* 2011, **23**:711–724.
58. Vickers MH, Breier BH, Cutfield WS, Hofman PL, Gluckman PD: Fetal origins of hyperphagia, obesity, and hypertension and postnatal amplification by hypercaloric nutrition. *Am J Physiol Endocrinol Metab* 2000, **279**:E83–E87.
59. Breton C, Lukaszewski MA, Risold PY, Enache M, Guillemot J, Riviere G, Delahaye F, Lesage J, Dutriez-Casteloot I, Laborie C, Vieau D: Maternal prenatal undernutrition alters the response of POMC neurons to energy status variation in adult male rat offspring. *Am J Physiol Endocrinol Metab* 2009, **296**:E462–E472.
60. Bassett DR, Craig BW: Influence of early nutrition on growth and adipose tissue characteristics in male and female rats. *J Appl Physiol* 1988, **64**:1249–1256.
61. Gabory A, Attig L, Junien C: Sexual dimorphism in environmental epigenetic programming. *Mol Cell Endocrinol* 2009, **304**:8–18.
62. Loizzo S, Vella S, Loizzo A, Fortuna A, Di Biase A, Salvati S, Frajese GV, Agrapart V, Ramirez Morales R, Spampinato S, et al: Sexual dimorphic evolution of metabolic programming in non-genetic non-alimentary mild metabolic syndrome model in mice depends on feed-back mechanisms integrity for pro-opiomelanocortin-derived endogenous substances. *Peptides* 2010, **31**:1598–1605.
63. Moura AS, Franco De Sa CC, Lopez Da Costa C, Vicente LL, Guerreiro SM, Pinto AM: Association between nutrition and gender during lactation influencing glucose homeostasis and blood pressure of the adult offspring. *Biol Neonate* 2002, **82**:263–270.
64. Sugden MC, Holness MJ: Gender-specific programming of insulin secretion and action. *J Endocrinol* 2002, **175**:757–767.
65. Fernandez-Twinn DS, Wayman A, Ekizoglou S, Martin MS, Hales CN, Ozanne SE: Maternal protein restriction leads to hyperinsulinemia and reduced insulin-signaling protein expression in 21-mo-old female rat offspring. *Am J Physiol Regul Integr Comp Physiol* 2005, **288**:R368–R373.
66. Zambrano E, Bautista CJ, Deas M, Martinez-Samayoa PM, Gonzalez-Zamorano M, Ledesma H, Morales J, Larrea F, Nathanielsz PW: A low maternal protein diet during pregnancy and lactation has sex- and window of exposure-specific effects on offspring growth and food intake, glucose metabolism and serum leptin in the rat. *J Physiol* 2006, **571**:221–230.
67. Zambrano E, Martinez-Samayoa PM, Bautista CJ, Deas M, Guillen L, Rodriguez-Gonzalez GL, Guzman C, Larrea F, Nathanielsz PW: Sex differences in transgenerational alterations of growth and metabolism in progeny (F2) of female offspring (F1) of rats fed a low protein diet during pregnancy and lactation. *J Physiol* 2005, **566**:225–236.
68. Sener A, Malaisse WJ: The stimulus-secretion coupling of amino acid-induced insulin release: insulinotropic action of branched-chain amino acids at physiological concentrations of glucose and glutamine. *Eur J Clin Invest* 1981, **11**:455–460.
69. Morgan D, Rebelato E, Abdulkader F, Graciano MF, Oliveira-Emilio HR, Hirata AE, Rocha MS, Bordin S, Curi R, Carpinelli AR: Association of NAD(P)H

- oxidase with glucose-induced insulin secretion by pancreatic beta-cells. *Endocrinology* 2009, **150**:2197–2201.
70. Ashcroft FM, Ashcroft SJ, Harrison DE: **Effects of 2-ketoisocaproate on insulin release and single potassium channel activity in dispersed rat pancreatic beta-cells.** *J Physiol* 1987, **385**:517–529.
 71. Chistiakov DA, Potapov VA, Khodirev DC, Shamkhalova MS, Shestakova MV, Nosikov VV: **Genetic variations in the pancreatic ATP-sensitive potassium channel, beta-cell dysfunction, and susceptibility to type 2 diabetes.** *Acta Diabetol* 2009, **46**:43–49.
 72. Henquin JC: **Triggering and amplifying pathways of regulation of insulin secretion by glucose.** *Diabetes* 2000, **49**:1751–1760.
 73. Barbosa FB, Capito K, Kofod H, Thams P: **Pancreatic islet insulin secretion and metabolism in adult rats malnourished during neonatal life.** *Br J Nutr* 2002, **87**:147–155.
 74. Branco RC, de Oliveira JC, Grassioli S, Miranda RA, Barella LF, Gomes RM, Bataglini LA, Torrezan R, Gravena C, de Freitas Mathias PC: **Maternal protein malnutrition does not impair insulin secretion from pancreatic islets of offspring after transplantation into diabetic rats.** *PLoS One* 2012, **7**:e30685.
 75. Ahren B, Wierup N, Sundler F: **Neuropeptides and the regulation of islet function.** *Diabetes* 2006, **55**(Suppl 2):S98–S107.
 76. Caulfield MP: **Muscarinic receptors—characterization, coupling and function.** *Pharmacol Ther* 1993, **58**:319–379.
 77. Bonner TI, Young AC, Brann MR, Buckley NJ: **Cloning and expression of the human and rat m5 muscarinic acetylcholine receptor genes.** *Neuron* 1988, **1**:403–410.
 78. Miguel JC, Abdel-Wahab YH, Mathias PC, Flatt PR: **Muscarinic receptor subtypes mediate stimulatory and paradoxical inhibitory effects on an insulin-secreting beta cell line.** *Biochim Biophys Acta* 2002, **1569**:45–50.
 79. Iismaa TP, Kerr EA, Wilson JR, Carpenter L, Sims N, Biden TJ: **Quantitative and functional characterization of muscarinic receptor subtypes in insulin-secreting cell lines and rat pancreatic islets.** *Diabetes* 2000, **49**:392–398.
 80. Balakrishnan S, Mathew J, Antony S, Paulose CS: **Muscarinic M(1), M(3) receptors function in the brainstem of streptozotocin induced diabetic rats: their role in insulin secretion from the pancreatic islets as a function of age.** *Eur J Pharmacol* 2009, **608**:14–22.
 81. Boschero AC, Szpak-Glasman M, Carneiro EM, Bordin S, Paul I, Rojas E, Atwater I: **Oxotremorine-m potentiation of glucose-induced insulin release from rat islets involves M3 muscarinic receptors.** *Am J Physiol* 1995, **268**:E336–E342.
 82. Yamada M, Miyakawa T, Duttaroy A, Yamanaka A, Moriguchi T, Makita R, Ogawa M, Chou CJ, Xia B, Crawley JN, *et al*: **Mice lacking the M3 muscarinic acetylcholine receptor are hypophagic and lean.** *Nature* 2001, **410**:207–212.
 83. Duttaroy A, Zimlikli CL, Gautam D, Cui Y, Mears D, Wess J: **Muscarinic stimulation of pancreatic insulin and glucagon release is abolished in m3 muscarinic acetylcholine receptor-deficient mice.** *Diabetes* 2004, **53**:1714–1720.
 84. Gautam D, Ruiz De Azua I, Li JH, Guettier JM, Heard T, Cui Y, Lu H, Jou W, Gavrilova O, Zawalich WS, Wess J: **Beneficial metabolic effects caused by persistent activation of beta-cell M3 muscarinic acetylcholine receptors in transgenic mice.** *Endocrinology* 2010, **151**:5185–5194.
 85. Fagundes AT, Moura EG, Passos MC, Oliveira E, Toste FP, Bonomo IT, Trevenzoli IH, Garcia RM, Lisboa PC: **Maternal low-protein diet during lactation programmes body composition and glucose homeostasis in the adult rat offspring.** *Br J Nutr* 2007, **98**:922–928.
 86. Fisher RS, Buchwald NA, Hull CD, Levine MS: **GABAergic basal forebrain neurons project to the neocortex: the localization of glutamic acid decarboxylase and choline acetyltransferase in feline corticopetal neurons.** *J Comp Neurol* 1988, **272**:489–502.
 87. Markakis EA: **Development of the neuroendocrine hypothalamus.** *Front Neuroendocrinol* 2002, **23**:257–291.

doi:10.1186/1743-7075-9-80

Cite this article as: de Oliveira *et al.*: Early postnatal low-protein nutrition, metabolic programming and the autonomic nervous system in adult life. *Nutrition & Metabolism* 2012 **9**:80.

Submit your next manuscript to BioMed Central and take full advantage of:

- **Convenient online submission**
- **Thorough peer review**
- **No space constraints or color figure charges**
- **Immediate publication on acceptance**
- **Inclusion in PubMed, CAS, Scopus and Google Scholar**
- **Research which is freely available for redistribution**

Submit your manuscript at
www.biomedcentral.com/submit

