

Review

Open Access

Gastrointestinal autonomic nerve tumours – report of a case and review of literature

Manoj H Mulchandani¹, Dipankar Chattopadhyay¹, John O Obafunwa² and Vickram B Joypaul*¹

Address: ¹Department of Surgery, South Tyneside District Hospital, Harton Lane, South Shields, Tyne and Wear, NE34 OPL, UK and ²Department of Pathology, South Tyneside District Hospital, Harton Lane, South Shields, Tyne and Wear, NE34 OPL, UK

Email: Manoj H Mulchandani - mulchandaniidmanoj@rediffmail.com; Dipankar Chattopadhyay - dchatto@doctors.org.uk; John O Obafunwa - joobafunwa@hotmail.com; Vickram B Joypaul* - Vickram.Joypaul@sthct.nhs.uk

* Corresponding author

Published: 19 July 2005

Received: 06 March 2005

World Journal of Surgical Oncology 2005, 3:46 doi:10.1186/1477-7819-3-46

Accepted: 19 July 2005

This article is available from: <http://www.wjso.com/content/3/1/46>

© 2005 Mulchandani et al; licensee BioMed Central Ltd.

This is an Open Access article distributed under the terms of the Creative Commons Attribution License (<http://creativecommons.org/licenses/by/2.0>), which permits unrestricted use, distribution, and reproduction in any medium, provided the original work is properly cited.

Abstract

Background: Gastrointestinal autonomic nerve tumours are uncommon stromal tumours of the intestinal tract. They can involve any part of the gastrointestinal system, but are very rarely seen in the rectum.

Case presentation: We report a unique case of rectal schwannoma with associated synchronous adenocarcinoma of the splenic flexure and adenoma of the descending colon. A 70-year-old patient was admitted with complaint of bleeding per rectum and investigations revealed the presence of a large submucosal rectal lesion in addition to the colonic pathologies. Following panproctocolectomy with permanent spout ileostomy, histopathology and immunohistochemistry confirmed the rectal lesion to be a schwannoma.

Conclusion: Literature review of the few reported cases has suggested radical surgical excision to be the best approach. Prognosis tends to be favourable after resection.

Background

The gastrointestinal autonomic nerve tumours (GANTs) were first described and defined by Herrera *et al*, in 1984 [1]. GANTs are uncommon stromal tumours accounting for 0.1% of benign tumours of the gastrointestinal tract [2]. It is a subgroup of gastrointestinal stromal tumours (GISTs) with specific ultrastructural differences; suggesting its origin from the myenteric plexus [3]. Schwannomas belong to this group and may develop practically in any anatomic region [2].

Without immunohistochemical studies, Schwannomas are often misdiagnosed as leiomyomas or leiomyosarco-

mas and generally present as an asymptomatic mass and/or with non-specific symptoms of fatigue and prolonged pain as well as signs of low grade pyrexia, anaemia and haemorrhage. Conventional pathological techniques are usually not diagnostic [2]; electron microscopy often being required to establish the diagnosis of GANTs and to exclude them from other gastrointestinal tumours [4].

Common sites for GANTs include the stomach, duodenum, jejunum, ileum [5] and to date literature search has revealed only twenty cases of colonic schwannomas and only four reported cases of rectal schwannomas [2,6-9].

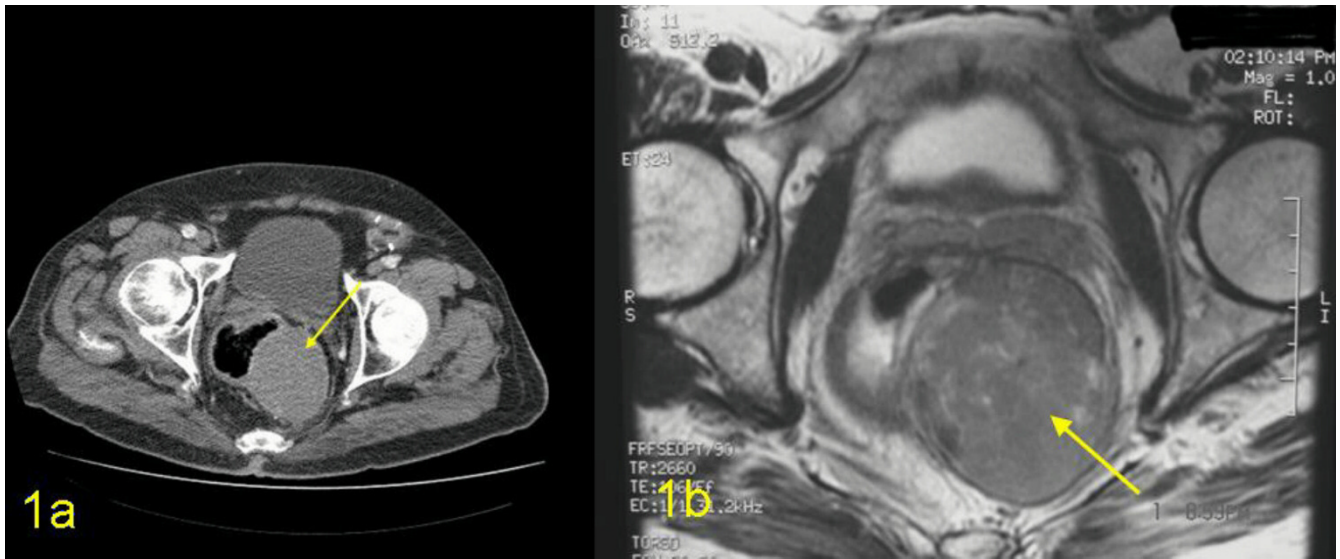


Figure 1

Imaging of the large bowel 1a) CT scan showing the large lesion in the posterior and left lateral wall of the rectum and 1b) MRI imaging: the distal rectal wall lesion (GANT) is shown to be intramural and free from adjoining structures.

We report a rare case of rectal schwannoma who also had incidental adenocarcinoma and adenoma of the colon.

Case presentation

A 70-year-old gentleman presented with a two-month history of bleeding per rectum and altered bowel habits. There was no history of tenesmus but sensation of incomplete evacuation following defecation as well as a feeling of a lump in the anal canal was present. His appetite and weight had been stable.

Clinically he looked well and abdominal examination revealed no abnormality. Per rectal examination revealed a mass in the posterior wall of the rectum with intact mucosa, which had significantly narrowed the lumen. Colonoscopy revealed the presence of a mass in the posterolateral wall of the rectum extending from 4 to 14 cm from the anal verge, with normal overlying mucosa. In addition, there was also a large sessile polyp in the descending colon and an ulceroproliferative growth at the splenic flexure; histopathology confirmed adenomatous polyp and adenocarcinoma respectively.

Computerised tomography (CT) of the pelvis showed thickening of the distal rectum with an obvious low density poorly enhancing lesion with possible calcification in its wall. Tissue plane between this lesion and prostate was not clearly seen but there was no infiltration of the ischio-rectal fat (Figure 1a). Magnetic resonance imaging (MRI) showed a very large well-defined mass in the left

presacral / ischio-anal fossa contiguous with rectal wall and thus almost certainly arising from one of the elements of the rectal wall (Figure 1b). Barium enema showed an apple core lesion in the splenic flexure (Figure 2a) as well as narrowing of the distal rectal lumen (Figure 2b).

The case was fully discussed at the colorectal multidisciplinary team meeting and all the surgical options including left hemicolectomy combined with rectosigmoidectomy plus transverse colostomy were fully evaluated. However, the consensus was that the additional presence of an adenocarcinoma as well as an adenoma higher up in the colon combined with the size of rectal schwannoma (12 cms) made panproctocolectomy with permanent ileostomy the best viable option. Furthermore, this was also the preferred choice of the patient as he opted to have an ileostomy rather than a colostomy. Surgery was performed without complications and the postoperative recovery was uneventful. At 6 months follow-up, the patient remains asymptomatic.

Macroscopic examination of the resected specimen confirmed the malignant tumour in the splenic flexure, the polyp in the descending colon and a 10 × 12 cm tumour with a well-defined pseudocapsule in the postero-lateral wall of the mid and low rectum (Figure 3). The surface of the latter lesion was fusiform with bluish-grey colour and its cut surface was irregularly lobulated with occasional cystic and necrotic areas.

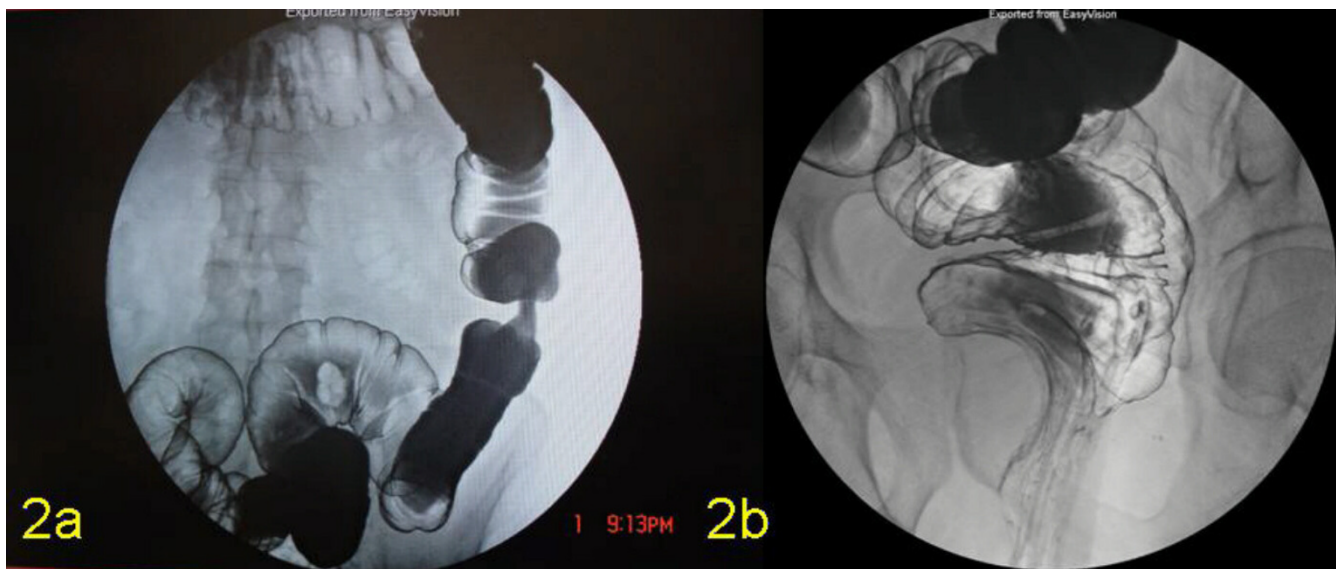


Figure 2
Barium enema **a)** the apple core lesion at the splenic flexure and **b)** the extrinsic compression in the distal rectum caused by schwannoma.

Histopathology of the splenic flexure lesion showed an invasive moderately differentiated adenocarcinoma (G1; Dukes B; Stage2). The polyp further down the colon was a tubulovillous adenoma with moderate focal dysplasia. The rectal tumour showed irregularly running fascicles of spindly to plump mesenchymal cells. The tumour was fairly vascularised with presence of a number of dilated and engorged vessels. The mitotic count was 4 per high power field. Some parts of the tumour were quite cellular while few areas were hypocellular reminiscent of the Antoni A and Antoni B patterns respectively (Figures 4a and 4b). Immunostaining revealed strong reactivity for neuron specific enolase (NSE), vimentin, CD34 and focal positivity for S100 (Figures 5a, 5b, 5c and 5d). Smooth muscle markers actin and desmin were negative.

Discussion

Gastrointestinal autonomic nerve tumours represent a distinct but rare subcategory of gastrointestinal stromal tumours accounting for 1% of all malignant gastrointestinal tumours. Initially described as plexosarcomas, these tumours have been reported to be more common in males and have a wide spectrum of age range [5]. Literature review has shown rare association of GANTs with neurofibromatosis [10-12] and adrenal ganglioneuroma [13]. Schwannomas are types of gastrointestinal tract autonomic tumours and amongst this group, rectal schwannomas are very rare [13,14]. Furthermore, the case described here, was associated with adenocarcinoma and adenoma

of the colon (Figure 3) and to date, there has been no reports of a similar association. Chance or an epigenetic event could explain such association of the different synchronous lesions.

Conventional imaging modalities such as barium enema, colonoscopy, computerised tomography and MRI have been used to investigate these patients but there are no definite radiological criteria to differentiate benign from malignant stromal tumour [15]. As shown in Figures 1a and 1b, CT and MRI scans located the large encapsulated lesion as arising from the rectal musculature, but yielded no additional information which allow for the distinction of benign from malignant potential. Recently Levy *et al*, [16] have reported that CT imaging may help to differentiate GANTs from gastrointestinal stromal tumours (GISTs). Low attenuation features (indicative of haemorrhage, necrosis and degeneration typically found in the centre of the GISTs) was not seen in our case (Figure 1a); thus favouring GANTs. Endoscopic ultrasound has been suggested to be reliable in predicting malignancy and the predictive features being irregular margins, depth of penetration, cystic spaces and lymph nodes with a malignant pattern [17]. However, it does not differentiate GANTs from the other stromal tumours [15]. Endoscopic ultrasound guided fine needle aspiration with immunohistochemical analysis may be useful in the pre-operative diagnosis of GIST [18] but in our patient, this was not done, as it would not have altered the treatment,

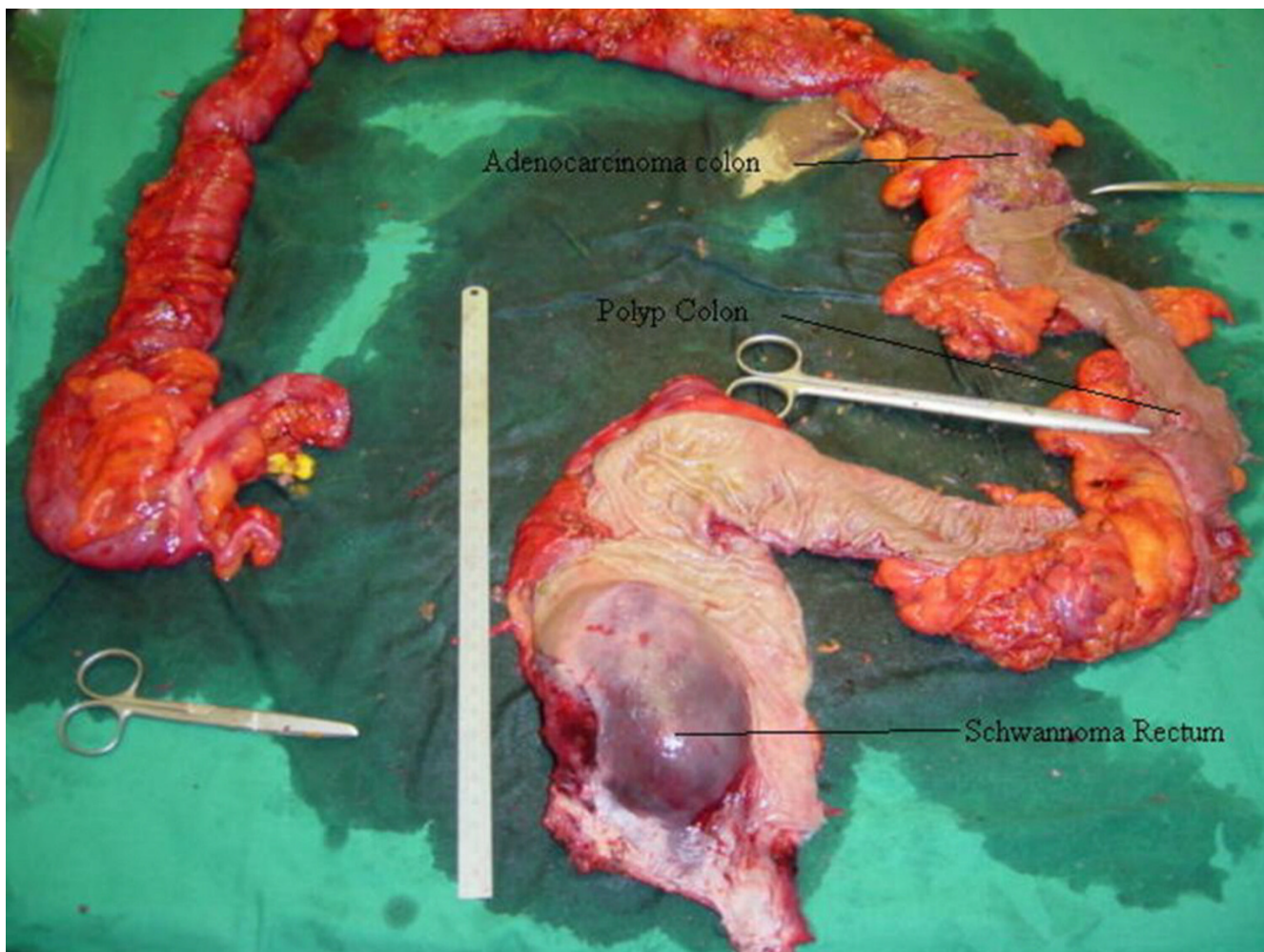


Figure 3
Resected specimen showing malignant tumour at the splenic flexure, polyp in the descending colon and rectal schwannoma.

due to the presence of synchronous tumours in the colon and also the size of the lesion.

Although GANTs do exhibit a variety of specific histological features, Lauwers *et al*, [10] believe that neither individual cell characteristics nor the growth pattern of these tumours allow distinction from GISTs. The differentiation of schwannomas from other stromal tumours is important because the latter group has high-risk of malignant behaviour [19]. Furthermore, whilst some authors disagree [5], others have suggested the presence of both Antoni A / Verocay bodies (cells forming a typical palisade arrangement in a well-organised pattern) and Antoni B (small lacunar foci with loss of palisade architecture) areas to be very specific for schwannoma [20]. Such pat-

terns have been clearly demonstrated in our case (Figures 4a and 4b).

Immunohistochemical studies of GANTs have usually demonstrated positivity to vimentin, CD34 and CD117 [5,10,21]. Positive reactivity with neuron specific enolase (NSE), S-100 protein, synaptophysin, and chromogranin A (proteins expressed by neurons from the autonomic nerve plexus) have also been reported and this support the histogenesis of GANTs from the autonomic plexus of Meissner or Auerbach [5]. Furthermore, positive immunoreactivity to the S-100 protein and Leu7 antigen tend to indicate the Schwannian nature of the tumour [22], whereas positivity to the glial fibrillary acidic protein point towards a myenteric plexus origin [3]. GANT is an ultrastructural variant of GIST, based on its consistent

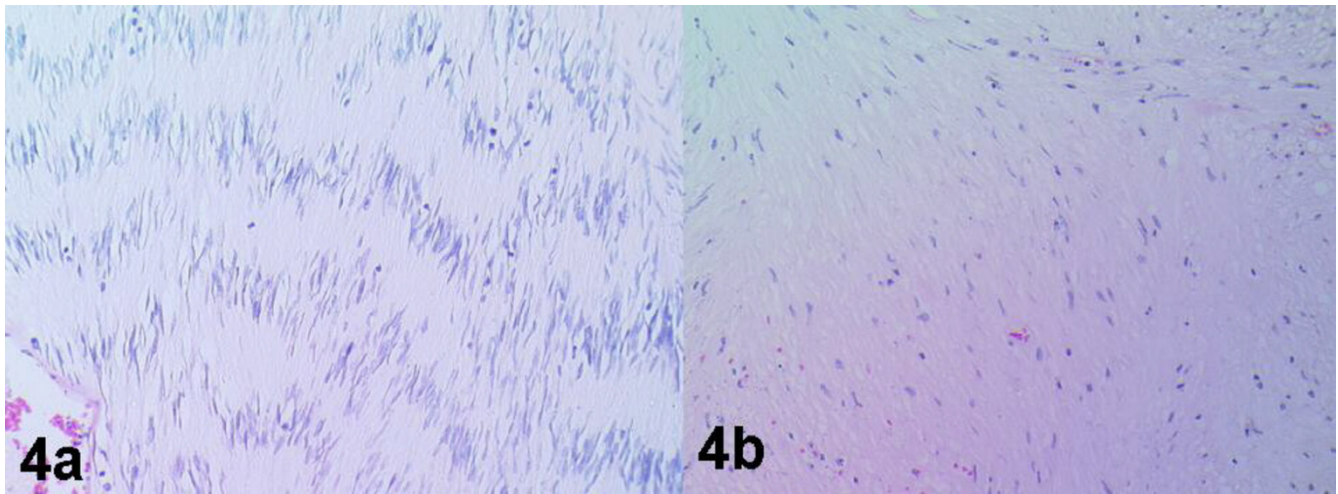


Figure 4
Photomicrograph showing a) cellular (Antoni A) and b) myxoid (Antoni B) areas (hematoxylin and eosin $\times 40$).

CD117 positivity and the presence of GIST-specific c-kit gene mutations in a significant number of cases [23]. The published GANT tumours have been variably and inconsistently S-100 protein positive. In our patient, immunohistochemistry revealed reactivity for vimentin, NSE, CD34 and for S-100 (Figure 5). Desmin and actin were negative.

Whilst immunohistochemistry provides important diagnostic differentiation of GANTs from other stromal tumours, definitive diagnosis can only be based on ultrastructural studies [5]. The ultrastructural criteria that suggest origin from myenteric plexus are neuron-like cells with long cytoplasmic processes containing microtubules, bulbous synapse like structures with dense core neurosecretory type granules and empty vesicles [10]. Ultrastructural examination is not available at most pathological units (including ours); this could explain the paucity of these cases and it is suggested that representative samples should be sent to centres having electron microscopic facilities.

The exact biological behaviour of GANTs is not yet fully elucidated due to the limited number of reported cases and as a result, determination of malignancy poses a difficult challenge, which cannot always be resolved by conventional histopathology. Various parameters have been studied in relation to tumour behaviour and to date; no single one is fully predictive of malignancy. Mitotic activity (counts >5 mitoses per high power fields) and tumour size (> 5 cm) tend to be associated with a high risk of metastasis or recurrence [24]. Although GANTs are generally considered benign, Lauwers *et al*, reported that 30%

of these patients developed local recurrence [12] and as a result, radical surgery is the optimal treatment [5]. In our case, the additional presence of an adenocarcinoma and adenoma higher up in the colon combined with the size of the rectal schwannoma (>12 cms) made pan-proctocolectomy with permanent ileostomy the better option.

The recent finding of CD117 receptors in these tumours combined with technological advances has led to the development of anti-tumour agents. Treatment of such CD117 positive GANTs with tyrosine kinase inhibitors have been shown to be beneficial [25] and could in future, represent an appropriate form of palliative therapy in those patients with unresectable as well as metastatic tumours [5].

Conclusion

Further studies are required not only to fully characterise the molecular biology of these tumours but also their aggressiveness as there is an inherent difficulty in making a benign diagnosis in GANTs. This is clearly important since it may result in a poor cross over in the assessment of the responsiveness of GANTs to anti-CD117 treatment.

Competing interests

The author(s) declare that they have no competing interest.

Authors' contributions

MMH collected the information, did literature search and wrote the manuscript.

DC assisted in writing the manuscript.

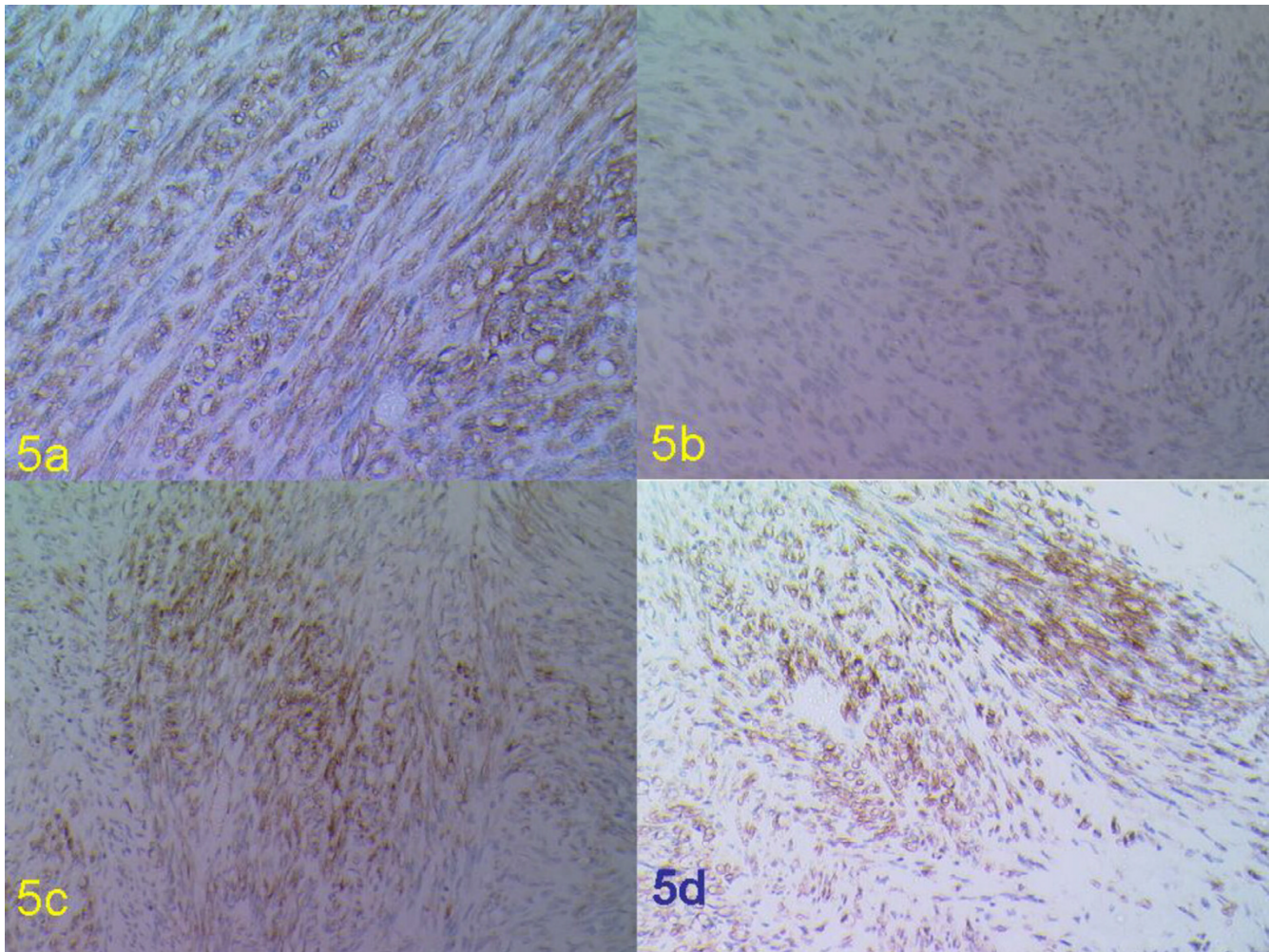


Figure 5
Immunohistochemical staining of the rectal lesion with a) CD34, b) S100, c) Vimentin and d) NSE (original magnification $\times 40$).

OJO assisted in pathological view and the microscopic pictures.

JBV helped in preparing the manuscript and edited the final version.

All authors have read and approved the final version.

Acknowledgements

Written consent was obtained from the patient for the publication of case report.

References

- Herrera GA, DeMoraes HP, Grizzle WE: **Malignant small bowel neoplasm of enteric plexus derivation (plexosarcoma): Light and electron microscopic study confirming the origin of the neoplasm.** *Dig Dis Sci* 1984, **29**:275-284.
- Maciejewski A, Lange D, Wloch J: **Case report of schwannoma of the rectum – clinical and pathological contribution.** *Med Sci Monit* 2000, **6**:779-782.
- Daimaru Y, Kido K, Hashimoto H, Ejoji Benign M: **Schwannoma of the gastrointestinal tract: a clinicopathologic and immunohistochemical study.** *Hum Pathol* 1988, **19**:257-264.
- Eyden B, Chorneyko KA, Shanks JII, Menasce LP, Banerjee SS: **Contribution of electron microscopy to understanding cellular differentiation in mesenchymal tumours of the gastrointestinal tract: a study of 82 tumours.** *Ultrastruct Pathol* 2002, **26**:269-285.
- Stift A, Friedl J, Gnant M, Herbst F, Jakesz R, Wenzl E: **Gastrointestinal autonomic nerve tumours: A surgical point of view.** *World J Gastroenterol* 2004, **10**:2447-2451.
- Bhardwaj K, BAL MS, Kumar P: **Rectal schwannoma.** *Indian J Gastroenterol* 2002, **21**:116-117.
- Catania G, Puleo C, Cardi F, Iuppa A, Buffone A: **Malignant schwannoma of the rectum: a clinical and pathological contribution.** *Chir Ital* 2001, **53**:873-877.
- Murakami N, Tanaka T, Ohmuri Y, Shirouzu Y, Ishibashi S, Harada Y, Yatsuka K, Jimi A, Shirouzu K: **A case report of rectal schwannoma.** *Kurume Med J* 1996, **43**:101-106.

9. Miettinen M, Shekitka KM, Sobin LH: **Schwannomas in the colon and rectum: a clinicopathologic and immunohistochemical study of 20 cases.** *Am J Surg Pathol* 2001, **25**:846-855.
10. Lauwers GY, Erlandson RA, Casper ES, Brennan MF, Woodruff JM: **Gastrointestinal autonomic nerve tumours. A clinicopathological, immunohistochemical and ultrastructural study of 12 cases.** *Am J Surg Pathol* 1993, **17**:887-897.
11. Dhimes P, Lopez-Carreira M, Ortega-Serano MP, Garcia Munoz II, Martinez-Gonzalez MA, Ballestin C: **Gastrointestinal autonomic nerve tumours and their separation from other gastrointestinal stromal tumours: an ultrastructural and immunohistochemical study of seven cases.** *Virchows Arch* 1995, **426**:27-35.
12. Sakaguchi M, Sano K, Ito M, Baba T, Fukuzawa M, Hotchi M: **A case of von Recklinghausen's disease with bilateral pheochromocytoma-malignant peripheral nerve sheath tumours of the adrenal and gastrointestinal autonomic nerve tumours.** *Am J Surg Pathol* 1996, **20**:889-897.
13. Erlandson RA, Klimstra DS, Woodruff JM: **Subclassification of gastrointestinal stromal tumours based on evaluation by electron microscopy and immunohistochemistry.** *Ultrastruct Pathol* 1996, **20**:373-393.
14. Lev D, Kariv Y, Messer GY, Isakov J, Gutman M: **Gastrointestinal autonomic nerve (GAN) tumour of the rectum.** *J Clin Gastroenterol* 2000, **30**:138-140.
15. Rueda O, Escribano J, Vicente JM, Garcia F, Villeta R: **Gastrointestinal autonomic nerve tumours (plexosarcomas). Is a radiological diagnosis possible?** *Eur Rad* 1998, **8**:458-460.
16. Levy AD, Quiles AM, Miettinen M, Sobin LH: **Gastrointestinal schwannomas: CT features with clinicopathologic correlation.** *AJR Am J Roentgenol* 2005, **184**:797-802.
17. Palazzo L, Landi B, Cellier C, Cuillerier C, Roseau G, Barbier J-P : **Endoscopic features predictive of benign and malignant gastrointestinal stromal cell tumours.** *Gut* 2000, **46**:88-92.
18. Nobuhiro A, Hidemi G, Yasumasa N, Yoshiki H, Naoki O, Tetsuo N, Tetsuo H: **The diagnosis of stromal tumours with EUS-guided fine needle aspiration with immunohistochemical analysis.** *Gastrointest Endosc* 2002, **55**:37-43.
19. Kwon MS, Lee SS, Ahn GH: **Schwannomas of the gastrointestinal tract: clinicopathological features of 12 cases including a case of oesophageal tumour compared with those of gastrointestinal stromal tumours and leiomyomas of the gastrointestinal tract.** *Pathol Res Pract* 2002, **198**:605-613.
20. Das Gupta TK, Brasfield RD, Strong ET, Hajdn SI: **Benign solitary schwannomas (neurilemmomas).** *Cancer* 1969, **24**:355-366.
21. Lee JR, Joshi V, Griffin JW Jr, Lasota J, Miettinen M: **Gastrointestinal autonomic nerve tumour: Immunohistochemical and molecular identity with gastrointestinal stromal tumour.** *Am J Surg Pathol* 2001, **25**:979-987.
22. Arai T, Sugimura H, Suzuki M: **Benign schwannoma of the oesophagus: Report of two cases with immunohistochemical and ultrastructural studies.** *Pathol Int* 1994, **44**:460-465.
23. Gibson PC, Cooper K: **CD117 (KIT) A diverse protein with selective applications in surgical pathology.** *Adv Anat Pathol* 2002, **9**:65-69.
24. Davila RE, Faigel DO: **GI stromal tumors.** *Gastrointest Endosc* 2003, **58**:80-88.
25. Joensuu H, Fletcher C, Dimitrijevic S, Silberman S, Roberts P, Demetri G: **Management of malignant gastrointestinal stromal tumours.** *Lancet Oncol* 2002, **3**:655-664.

Publish with **BioMed Central** and every scientist can read your work free of charge

"BioMed Central will be the most significant development for disseminating the results of biomedical research in our lifetime."

Sir Paul Nurse, Cancer Research UK

Your research papers will be:

- available free of charge to the entire biomedical community
- peer reviewed and published immediately upon acceptance
- cited in PubMed and archived on PubMed Central
- yours — you keep the copyright

Submit your manuscript here:
http://www.biomedcentral.com/info/publishing_adv.asp

