

RESEARCH

Open Access

Macrophage imbalance (M1 vs. M2) and upregulation of mast cells in wall of ruptured human cerebral aneurysms: preliminary results

David Hasan^{1,4*}, Nohra Chalouhi², Pascal Jabbour² and Tomoki Hashimoto³**Abstract**

Background: M1 and M2 cells are two major subsets of human macrophages that exert opposite effects on the inflammatory response. This study aims to investigate the role of macrophage M1/M2 imbalance and mast cells in the progression of human cerebral aneurysms to rupture.

Methods: Ten patients with cerebral aneurysms (five ruptured and five unruptured) underwent microsurgical clipping. During the procedure, a segment of the aneurysm dome was resected and immunostained with monoclonal antibodies for M1 cells (anti-HLA DR), M2 cells (anti-CD 163), and mast cells (anti-tryptase clone AA). A segment of the superficial temporal artery (STA) was also removed and immunostained with monoclonal antibodies for M1, M2, and mast cells.

Results: All ten aneurysm tissues stained positive for M1, M2, and mast cells. M1 and M2 cells were present in equal proportions in unruptured aneurysms. This contrasted with a marked predominance of M1 over M2 cells in ruptured aneurysms ($p = 0.045$). Mast cells were also prominently upregulated in ruptured aneurysms ($p = 0.001$). Few M1 and M2 cells were present in STA samples.

Conclusions: M1/M2 macrophages and mast cells are found in human cerebral aneurysms; however, M1 and mast cell expression seems to markedly increase in ruptured aneurysms. These findings suggest that macrophage M1/M2 imbalance and upregulation of mast cells may have a role in the progression of cerebral aneurysms to rupture.

Keywords: Aneurysm, Inflammation, Macrophages, M1, M2, Mast cells

Background

Monocytes originate from bone marrow-derived progenitor cells and do not proliferate in the blood [1-4]. Mononuclear phagocytes develop into morphologically and functionally distinct cell types in response to the tissue microenvironment (e.g., lung alveolar macrophages, Kupffer cells, decidual macrophages) [5,6]. Two major subsets of human macrophages can be defined in atherosclerotic plaques: CD14^{high}CD16^{low} macrophages, which typically represent 85% to 95% of monocytes, and CD14^{low}CD16^{high} macrophages, which account for the remaining 5 to 15% [2-4,7]. These macrophages play

opposite roles in inflammation [2-4,7]. A growing body of evidence suggests that a polarized macrophage population can contribute to systemic and neuroinflammatory diseases [8,9].

Macrophages play a critical role in cerebral aneurysm formation and rupture [10-13]. Macrophage depletion and knockout of monocyte chemoattractant protein-1 gene in mice reduce the incidence cerebral aneurysm formation [13]. Recent studies also have revealed that mast cells contribute to various vascular diseases through degranulation and release of cytokines including cerebral aneurysm formation [14,15].

We hypothesize that macrophage imbalance and upregulation of mast cells are more pronounced in ruptured compared to unruptured human cerebral aneurysms. The goal of this study is to provide immunohistological evidence of this hypothesis.

* Correspondence: david-hasan@uiowa.edu

¹Department of Neurosurgery, Carver College of Medicine, University of Iowa, Iowa City, IA, USA

⁴Department of Neurosurgery, University of Iowa Hospitals and Clinics, 200 Hawkins Drive, JCP 1616, Iowa City, IA 52242, USA

Full list of author information is available at the end of the article

Material and methods

The study was approved by the University of Iowa Institutional Review Board (IRB). Ten consecutive patients with cerebral aneurysms who underwent microsurgical clipping during a 6-month interval were identified. No patients were excluded, except those who were treated with endovascular means. Five patients with unruptured aneurysms and five patients with ruptured aneurysms were included in the study. Mean age was 55 years (range 44–67 years) (Table 1). Informed consent was obtained in all patients prior to microsurgical clipping. A segment of the aneurysm dome (≥ 1 mm) and the superficial temporal artery (STA) (≥ 2 mm) was removed from each patient and placed in formalin. All 20 specimens (10 aneurysms and 10 STAs) were immunostained with monoclonal antibodies to mast cells using anti-mast cells tryptase clone AA1 (DakoCytomation, Carpinteria, CA), M1 cells using anti-HLA DR (ABCAM, Cambridge MA), and M2 cells using anti-CD 163 (ABCAM, Cambridge MA).

The entire tissue sample collected from the aneurysm dome was embedded in paraffin and analyzed. The sample size, however, differed from one patient to another based on the size of the aneurysm and ease of tissue collection following successful clipping. All fields were analyzed per sample and, for consistency, we chose the field with the highest concentration of cells for semiquantitative analysis. Each field covered the entire section of the

aneurysm tissue and included all layers of the wall of the aneurysm dome.

Semiquantitative analysis of the slides was performed based on cell count (immunostained positive cells) per high-power field (HPF) (40 \times): grade 0 = 0–10 cells per HPF, grade 1 = 10–20 cells per HPF, grade 2 = 20–30 cells per HPF, and grade 3 ≥ 30 cells per HPF. All specimens were assessed by an observer who was blinded to the clinical data and source of tissue.

Statistical analysis was performed using the Kruskal-Wallis test, a nonparametric ANOVA test. This test is used for comparing more than two samples that are independent, or not related. The parametric equivalence of the Kruskal-Wallis test is the one-way analysis of variance (ANOVA). The factual null hypothesis is that the populations from which the samples originate have the same median. When the Kruskal-Wallis test leads to significant results, then at least one of the samples is different from the other samples. The test does not identify where the differences occur or how many differences actually occur.

Results

Ten patients with ten aneurysms were included in this study. All ten aneurysms stained positive for expression of M1, M2, and mast cells using anti-HLA DR, anti-CD 163, and anti-mast cells tryptase clone AA1 monoclonal antibodies (Figures 1 and 2).

Table 1 Patient and aneurysm characteristics

Patient no.	Age	Sex	Aneurysm location	Aneurysm size (mm)	Rupture (SAH)	M1 A/STA	M2 A/STA	Mast cells
1	50	F	L-ICA	9 \times 6	No	1/0 (13/4)	1/0 (11/5)	1 (4)
2	56	M	R-MCA	5 \times 4	No	1/0 (15/7)	1/0 (11/4)	1 (7)
3	52	F	L-MCA	10 \times 10	No	2/0 (27/3)	1/0 (18/6)	1 (5)
4	67	F	R-MCA	7 \times 8	No	2/0 (26/5)	2/0 (27/4)	1 (3)
5	47	M	R-Pcomm	14 \times 11	No	2/0 (28/7)	2/0 (27/5)	1 (5)
6	68	M	L-MCA	12 \times 9	Yes	3/0 (39/6)	1/0 (12/3)	3 (41)
7	44	M	R-MCA	6 \times 5	Yes	3/1 (41/2)	2/1 (22/4)	3 (39)
8	38	F	A-comm	8 \times 8	Yes	3/0 (37/3)	1/0 (14/7)	3 (31)
9	55	F	L-MCA	9 \times 10	Yes	3/0 (44/6)	1/0 (13/4)	3 (49)
10	74	M	R-PICA	14 \times 15	Yes	3/0 (38/4)	1/0 (15/6)	3 (34)

F = female; M = male; L = left; R = right; ICA = internal carotid artery; MCA = middle cerebral artery; A-Comm = anterior communicating artery; Pcomm = posterior communicating artery; PICA = posterior communicating artery; A/STA = aneurysm/superficial temporal artery; grade 0 = 0–10 cells per HPF, grade 1 = 10–20 cells per HPF, grade 2 = 20–30 cells per HPF, and grade 3 ≥ 30 cells per HPF. Numbers in parentheses are absolute cell counts.

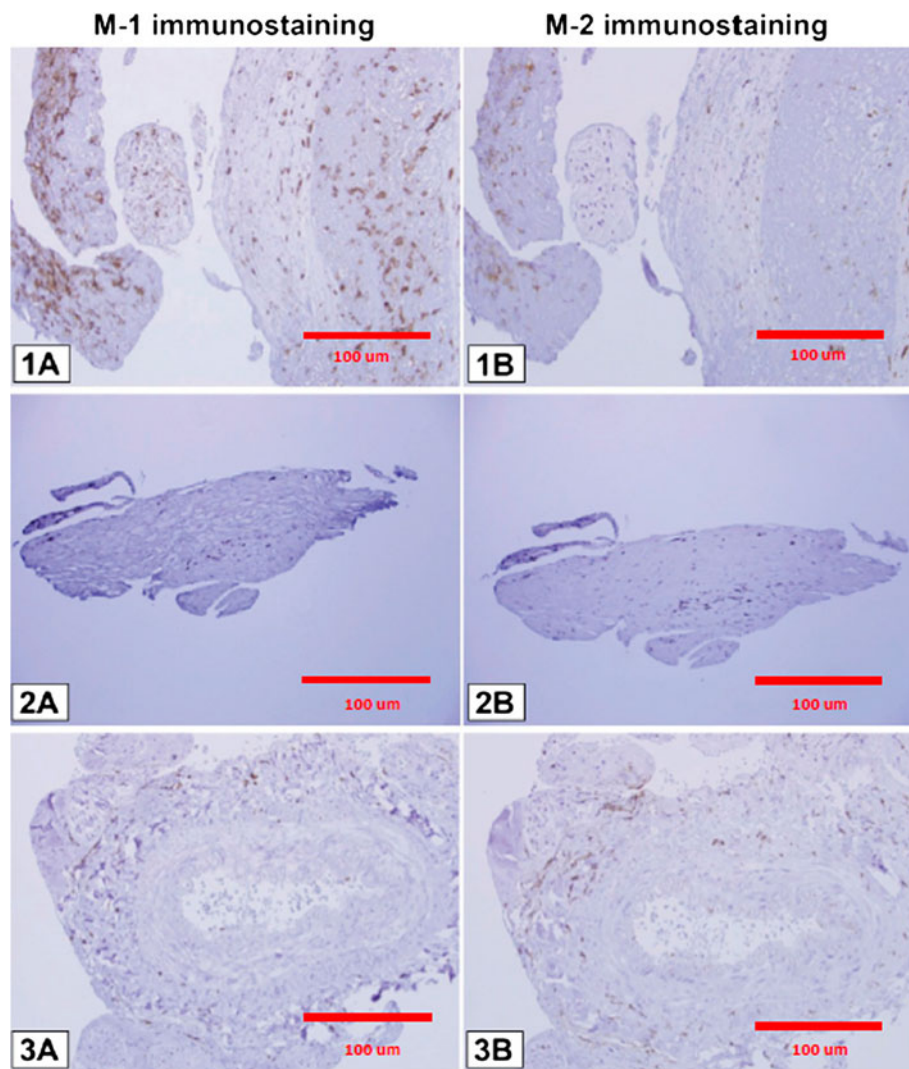


Figure 1 Immunostaining of monoclonal antibodies with anti-HLA DR for M1 and anti-CD 163 for M2 cells. In ruptured aneurysms, there is a clear predominance of M1 over M2 cells (1A-1B). In unruptured aneurysms, M1 cell count is almost the same as M2 (2A-2B). The expression of M1 and M2 cells is almost similar in STA specimen, but significantly lower than in ruptured and unruptured aneurysms (3A-3B).

Mast cells

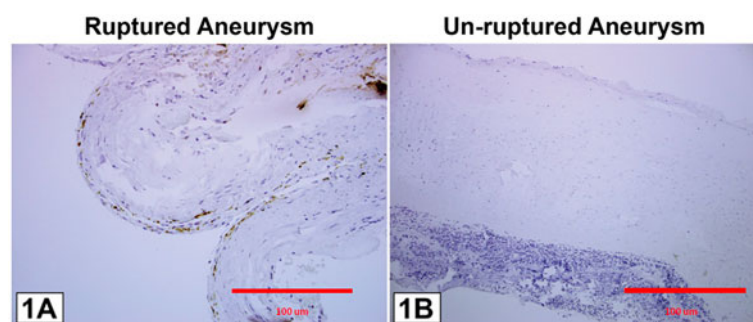


Figure 2 Immunostaining of monoclonal antibodies for anti-mast cells tryptase (clone AA1). There are more mast cells visible in ruptured aneurysms than in unruptured aneurysms.

Macrophages

Unruptured aneurysms stained almost equally for M1 and M2 cells. Ruptured cerebral aneurysms, however, stained more abundantly with anti-HLA DR monoclonal antibodies, indicating a predominance of M1 over M2 cells. There was only scant staining of M1 and M2 cells in the ten samples of STA tissue (Figure 1).

Mast cells

Unruptured aneurysms had few mast cells. Ruptured aneurysms had prominently more mast cells stained with monoclonal antibody for anti-mast cells tryptase clone AA1 compared with unruptured aneurysms. There was abundant mast cell staining in STA tissue but this was limited to adventitia and did not extend to the other layers, namely the media, intima, and subendothelium (Figure 2).

Statistical analysis

Areas immunostained for M1 and M2 cells with cell count differences were localized, and semiquantitative analysis was performed (Figure 3). M1 cell expression was significantly higher than M2 cell expression ($p = 0.045$) in ruptured aneurysms. M1 cell expression was also greater ($p = 0.001$) in ruptured and unruptured aneurysms vs. STA. Mast cell expression was significantly higher in ruptured aneurysms vs. unruptured aneurysms ($p = 0.001$).

Discussion

Monocyte differentiation into M1 and M2 subsets

Monocytes differentiate into heterogeneous cells [1-4,16]. Differential expression of selected surface molecules is used to identify monocyte subsets in humans and mice. In humans, there are two distinct subsets of macrophages based on the expression of CD16 [7]. CD14^{high}/CD16^{low} cells are the primary subtype of macrophages as they represent 80% to 90% of circulating monocytes and express high levels of the chemokine receptor CCR2 and low levels of CX3CR1. They are poor producers of inflammatory cytokines but release interleukin (IL) 1, IL 13, IL 14, IL 4, IL-10, transforming growth factor- β (TGF- β), and vitamin D. Conversely, CD14^{low}/CD16^{high} monocytes have a CX3CR1^{high}/CCR2^{low} phenotype and account for inflammatory mediator production, including tumor necrosis factor- α (TNF- α), IL 1, IL 6, IL 12, IL 23, matrix metalloproteinases (MMP), prostaglandins, and leukotrienes [1-4,7]. In mice, monocytes differentiate into two major types of macrophages (M1 and M2) [1-4,6,17,18]. M1 and M2 macrophages play opposite roles during inflammation, although both are present in atherosclerotic lesions. M1 macrophages are differentiated from Ly6C^{high} monocytes. They promote inflammation by producing high levels of IL-2, IL-23, IL-6, IL-1, and TNF- α . M2

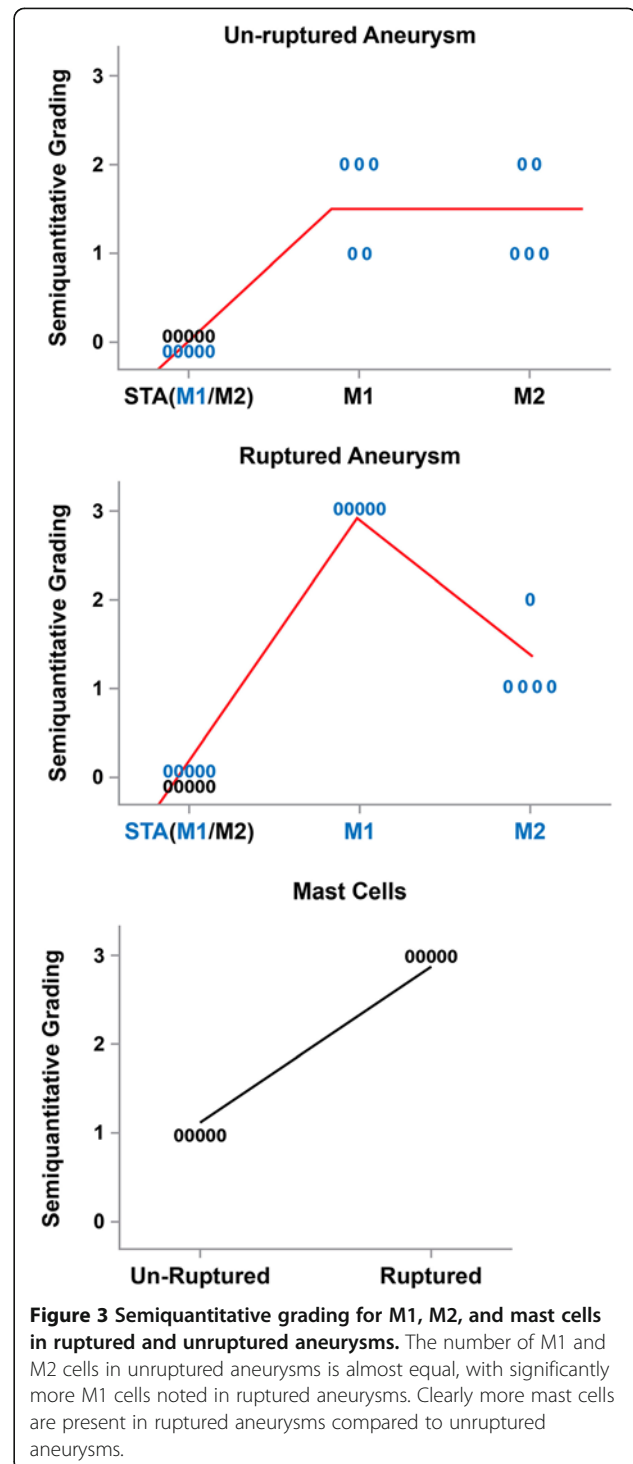
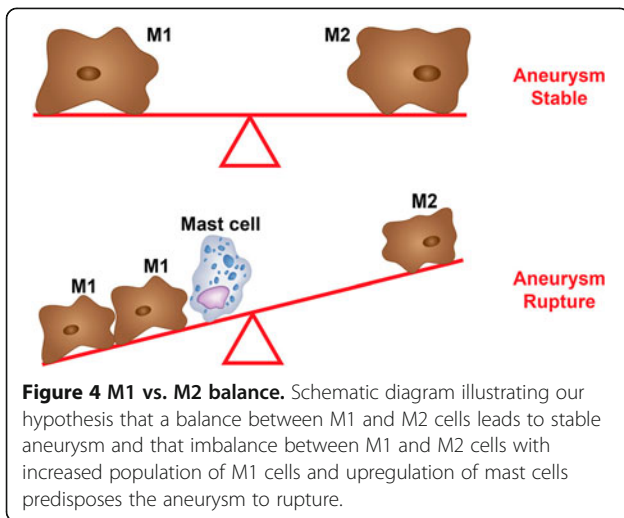


Figure 3 Semiquantitative grading for M1, M2, and mast cells in ruptured and unruptured aneurysms. The number of M1 and M2 cells in unruptured aneurysms is almost equal, with significantly more M1 cells noted in ruptured aneurysms. Clearly more mast cells are present in ruptured aneurysms compared to unruptured aneurysms.

macrophages, on the other hand, are differentiated from Ly6C^{low} monocytes. They differentiate in the presence of IL-4, IL-13, IL-1, or vitamin D3, tend to produce a large amount of IL-10, and express scavenger receptors, mannose receptors, and arginase [1-5]. Unlike M1 macrophages, these cells promote resolution of inflammation.



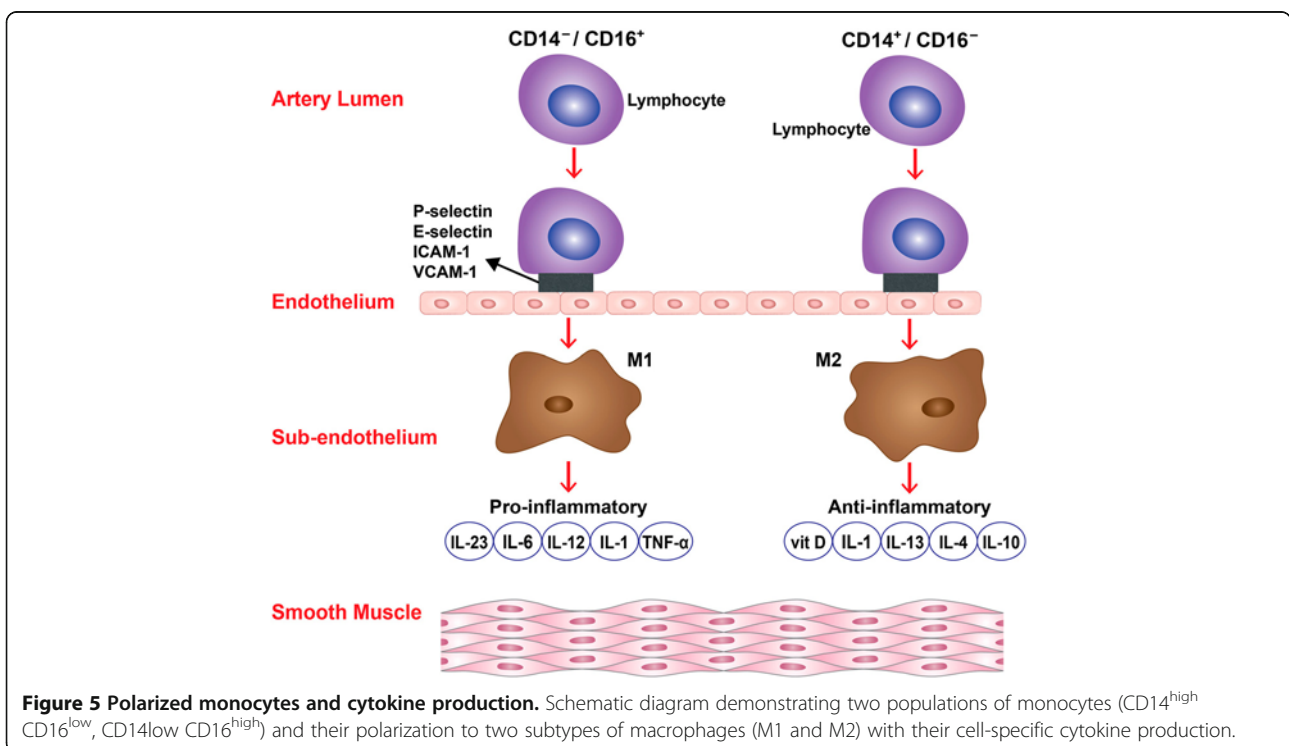
Recently, there has been a great deal of interest in macrophage heterogeneity in atherosclerotic lesions, particularly regarding the roles of M1 versus M2 macrophages. There is also evidence that an imbalance in the ratio of M1 to M2 macrophages in advanced atherosclerosis impairs resolution of inflammation *in vitro* [1-5].

Macrophages and cerebral aneurysms

Macrophage-depleted and monocyte chemoattractant protein-1 knockout mice have a reduced incidence of cerebral

aneurysms [13]. Macrophages were observed in the wall of hypertension-induced cerebral aneurysms in rats and were reported to secrete extracellular matrix-degrading proteolytic enzymes and induce apoptosis of smooth muscle cells [12]. Additionally, macrophages induce fibrosis through secretion of TGF- β and promote the release of reactive oxygen species, TNF- α and IL-1 [10]. Macrophages are also an important source of MMP 2 and 9, which presumably contribute to the reduction of mechanical strength and rupture of aneurysms. MMP-2 is expressed in most cerebral aneurysms, whereas MMP-9 is expressed primarily in aneurysms with atherosclerotic changes [19,20]. Macrophages are an especially important source of growth factors and cytokines that stimulate fibrosis [3].

Platelet-derived growth factor, basic fibroblast growth factor (bFGF), and transforming growth factors alpha (TGF- α) and beta are expressed by immunohistochemistry in intracranial aneurysms [20-23]. Transcription of procollagens I and III is promoted by TGF- β , secreted in large part by macrophages [24]. In aneurysms, the progression of smooth muscle cells from a contractile to a synthetic phenotype and the increase in relative numbers of smooth muscle cells (by increased proliferation of smooth muscle cells and myointimal hyperplasia) may compensate for the increased MMP expression and sustain aneurysm wall strength [25]. In concordance with this theory, the aneurysm wall shows, by *in situ* hybridization,



increased synthesis of collagen type III but a slight diminution in expression of collagen type III in immunostaining, probably indicating faster collagen turnover. Mural cells die during aneurysm progression and the extracellular matrix-synthesizing capability is progressively lost, leading to a decrease in tensile wall strength and an increase in susceptibility of the aneurysm to rupture [25].

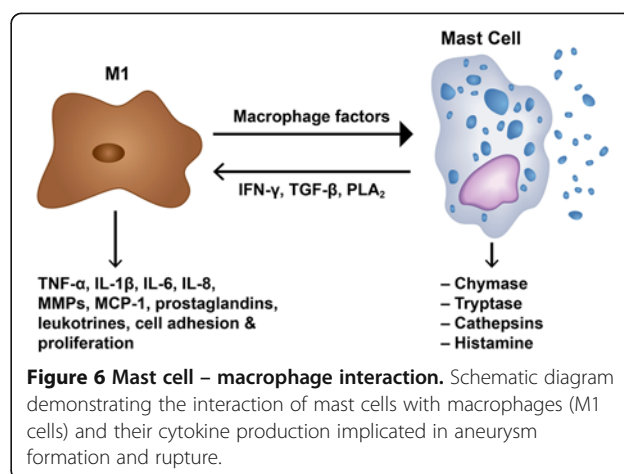
Based on the classification of atherosclerosis by histological changes, nearly all cerebral aneurysms can be considered atherosclerotic [26]. Features of advanced atherosclerosis (including a core of atheromatous debris, a fibrous cap with macrophages and T-cells) are observed in approximately half of intracranial aneurysms [11,26], and myointimal hyperplasia occurs in the other half [25]. Thrombosis occurs in some cerebral aneurysms, which further amplifies the ongoing inflammatory reaction and wall degeneration, with loss of tensile strength and ultimately aneurysm rupture [24,27-32].

Mast cells and cerebral aneurysms

Ishibashi et al. [14] examined the role of mast cells in the formation of cerebral aneurysms in an experimental rat model. They found that the number of mast cells was significantly increased in aneurysm walls. They also showed that using mast cell degranulation inhibitors attenuated the chronic inflammatory process in the aneurysm wall. This was evident from the decreased nuclear factor-kappa B activation, macrophage infiltration, and expression of monocyte chemoattractant protein-1, MMP, and interleukin-1beta. They also demonstrated that the degranulation of mast cells led to increased expression and activation of MMP-2 and -9 and induced nitric oxide synthase in cultured smooth muscle cells from rat intracranial arteries. Their results suggest that mast cells play a critical role in aneurysm formation in rats through the induction of inflammation. However, they did not address the question of whether mast cells contribute to the progression of cerebral aneurysms to rupture and whether these cells are present in human cerebral aneurysm tissue.

Interpretation of current findings

We found that M1 and M2 cells were present in equal proportions in unruptured aneurysms with very few mast cells, which suggests that the pro- and anti-inflammatory activities of M1 and M2 cells, respectively, may be well balanced in the walls of unruptured aneurysms (Figure 4). However, ruptured aneurysms appear to lose this critical M1/M2 balance, as M1 cell expression was significantly more pronounced than M2 cell expression in ruptured aneurysm walls. Additionally, mast cells were found to be significantly upregulated in ruptured cerebral aneurysm tissue. Collectively, these data suggest



that a polarized proinflammatory response involving M1 macrophages and mast cells may have a role in the cascade of events leading to aneurysm rupture (Figures 5 and 6). However, the relationship between macrophage subsets and mast cells remains to be defined.

Limitations

This study is limited by the small sample size, and generalization of the results may not be appropriate. It also is difficult to determine whether increased expression of M1 vs. M2 and upregulation of mast cells in ruptured cerebral aneurysms (compared to non-ruptured) is due to inflammation that occurs following the rupture of the aneurysm or whether there was an increase in expression of these molecules that preceded and led to rupture of the aneurysm.

Conclusion

M1, M2, and mast cells are expressed in the walls of human cerebral aneurysms. However, M1 and mast cell expression may increase significantly in ruptured aneurysms. Our findings suggest that macrophage M1/M2 imbalance and upregulation of mast cells may play a role in the progression of cerebral aneurysms to rupture. Mast cell activation and M1/M2 macrophage phenotypic modulation may represent important targets for future therapy.

Abbreviations

STA: Superficial temporal artery; HPF: High-power field; IL: Interleukin; TGF- β : Transforming growth factor- β ; TNF- α : Tumor necrosis factor- α ; MMP: Matrix metalloproteinases; TGF- α : Transforming growth factor alpha.

Competing interests

The authors declare that they have no competing interest.

Authors' contributions

DH performed all surgical procedures; conceived and designed the study; acquired, analyzed, and interpreted the data; and drafted the manuscript. NC helped in data analysis and interpretation and helped drafting the manuscript. PJ and TH helped design the study, analyzed and interpreted

the data. All authors have revised the manuscript critically for important intellectual content and have given final approval of the version to be published.

Sources of funding

This study was supported by NIH grant no. R03NS07922 to DH.

Acknowledgments

None

Author details

¹Department of Neurosurgery, Carver College of Medicine, University of Iowa, Iowa City, IA, USA. ²Department of Neurosurgery, Thomas Jefferson University and Jefferson Hospital for Neuroscience, Philadelphia, PA, USA. ³Department of Anesthesia and Perioperative Care, University of California San Francisco, San Francisco, CA, USA. ⁴Department of Neurosurgery, University of Iowa Hospitals and Clinics, 200 Hawkins Drive, JCP 1616, Iowa City, IA 52242, USA.

Received: 17 July 2012 Accepted: 12 September 2012

Published: 21 September 2012

References

- Geissmann F, Jung S, Littman DR: **Blood monocytes consist of two principal subsets with distinct migratory properties.** *Immunity* 2003, **19**:71–82.
- Gui T, Shimokado A, Sun Y, Akasaka T, Muragaki Y: **Diverse roles of macrophages in atherosclerosis: from inflammatory biology to biomarker discovery.** *Mediators Inflamm* 2012, **2012**:693083.
- Mantovani A, Garlanda C, Locati M: **Macrophage diversity and polarization in atherosclerosis: a question of balance.** *Arterioscler Thromb Vasc Biol* 2009, **29**:1419–1423.
- Sica A, Mantovani A: **Macrophage plasticity and polarization: in vivo veritas.** *J Clin Invest* 2012, **122**:787–795.
- Mantovani A, Sica A, Locati M: **Macrophage polarization comes of age.** *Immunity* 2005, **23**:344–346.
- Mantovani A, Sozzani S, Locati M, Allavena P, Sica A: **Macrophage polarization: tumor-associated macrophages as a paradigm for polarized M2 mononuclear phagocytes.** *Trends Immunol* 2002, **23**:549–555.
- Passlick B, Flieger D, Ziegler-Heitbrock HW: **Identification and characterization of a novel monocyte subpopulation in human peripheral blood.** *Blood* 1989, **74**:2527–2534.
- Kigerl KA, Gensel JC, Ankeny DP, Alexander JK, Donnelly DJ, Popovich PG: **Identification of two distinct macrophage subsets with divergent effects causing either neurotoxicity or regeneration in the injured mouse spinal cord.** *J Neurosci* 2009, **29**:13435–13444.
- Gordon S: **Macrophage heterogeneity and tissue lipids.** *J Clin Invest* 2007, **117**:89–93.
- Boyle JJ: **Macrophage activation in atherosclerosis: pathogenesis and pharmacology of plaque rupture.** *Curr Vasc Pharmacol* 2005, **3**:63–68.
- Chalouhi N, Ali MS, Jabbour PM, Tjournakaris SI, Gonzalez LF, Rosenwasser RH, Koch WJ, Dumont AS: **Biology of intracranial aneurysms: role of inflammation.** *J Cereb Blood Flow Metab* 2012, **32**:1659–1676.
- Jamous MA, Nagahiro S, Kitazato KT, Tamura T, Aziz HA, Shono M, Satoh K: **Endothelial injury and inflammatory response induced by hemodynamic changes preceding intracranial aneurysm formation: experimental study in rats.** *J Neurosurg* 2007, **107**:405–411.
- Kanematsu Y, Kanematsu M, Kurihara C, Tada Y, Tsou TL, van Rooijen N, Lawton MT, Young WL, Liang EI, Nuki Y, Hashimoto T: **Critical roles of macrophages in the formation of intracranial aneurysm.** *Stroke* 2011, **42**:173–178.
- Ishibashi R, Aoki T, Nishimura M, Hashimoto N, Miyamoto S: **Contribution of mast cells to cerebral aneurysm formation.** *Curr Neurovasc Res* 2010, **7**:113–124.
- Xu JM, Shi GP: **Emerging role of mast cells and macrophages in cardiovascular and metabolic diseases.** *Endocr Rev* 2012, **33**:71–108.
- Auffray C, Sieweke MH, Geissmann F: **Blood monocytes: development, heterogeneity, and relationship with dendritic cells.** *Annu Rev Immunol* 2009, **27**:669–692.
- Johnson JL, Newby AC: **Macrophage heterogeneity in atherosclerotic plaques.** *Curr Opin Lipidol* 2009, **20**:370–378.
- Paulson KE, Zhu SN, Chen M, Nurmohamed S, Jongstra-Bilen J, Cybulsky MI: **Resident intimal dendritic cells accumulate lipid and contribute to the initiation of atherosclerosis.** *Circ Res* 2010, **106**:383–390.
- Bruno G, Todor R, Lewis I, Chyatte D: **Vascular extracellular matrix remodeling in cerebral aneurysms.** *J Neurosurg* 1998, **89**:431–440.
- Caird J, Napoli C, Taggart C, Farrell M, Bouchier-Hayes D: **Matrix metalloproteinases 2 and 9 in human atherosclerotic and non-atherosclerotic cerebral aneurysms.** *Eur J Neurol* 2006, **13**:1098–1105.
- Kilic T, Sohrabifar M, Kurtkaya O, Yildirim O, Elmaci I, Gunel M, Pamir MN: **Expression of structural proteins and angiogenic factors in normal arterial and unruptured and ruptured aneurysm walls.** *Neurosurgery* 2005, **57**:997–1007. discussion 1007–1007.
- Krischek B, Kasuya H, Tajima A, Akagawa H, Sasaki T, Yoneyama T, Ujjie H, Kubo O, Bonin M, Takakura K, et al: **Network-based gene expression analysis of intracranial aneurysm tissue reveals role of antigen presenting cells.** *Neuroscience* 2008, **154**:1398–1407.
- Shi C, Awad IA, Jafari N, Lin S, Du P, Hage ZA, Shenkar R, Getch CC, Bredel M, Batjer HH, Bendok BR: **Genomics of human intracranial aneurysm wall.** *Stroke* 2009, **40**:1252–1261.
- Wynn TA: **Cellular and molecular mechanisms of fibrosis.** *J Pathol* 2008, **214**:199–210.
- Mimata C, Kitaoka M, Nagahiro S, Iyama K, Hori H, Yoshioka H, Ushio Y: **Differential distribution and expressions of collagens in the cerebral aneurysmal wall.** *Acta Neuropathol* 1997, **94**:197–206.
- Kosierkiewicz TA, Factor SM, Dickson DW: **Immunocytochemical studies of atherosclerotic lesions of cerebral berry aneurysms.** *J Neuropathol Exp Neurol* 1994, **53**:399–406.
- Fontaine V, Jacob MP, Houard X, Rossignol P, Plissonnier D, Angles-Cano E, Michel JB: **Involvement of the mural thrombus as a site of protease release and activation in human aortic aneurysms.** *Am J Pathol* 2002, **161**:1701–1710.
- Fontaine V, Touat Z, Mtairag el M, Vranckx R, Louedec L, Houard X, Andreassian B, Sebbag U, Palombi T, Jacob MP, et al: **Role of leukocyte elastase in preventing cellular re-colonization of the mural thrombus.** *Am J Pathol* 2004, **164**:2077–2087.
- Frosen J, Marjamaa J, Myllarniemi M, Abo-Ramadan U, Tulamo R, Niemela M, Hernesniemi J, Jaaskelainen J: **Contribution of mural and bone marrow-derived neointimal cells to thrombus organization and wall remodeling in a microsurgical murine saccular aneurysm model.** *Neurosurgery* 2006, **58**:936–944. discussion 936–944.
- Frosen J, Piippo A, Paetau A, Kangasniemi M, Niemela M, Hernesniemi J, Jaaskelainen J: **Remodeling of saccular cerebral artery aneurysm wall is associated with rupture: histological analysis of 24 unruptured and 42 ruptured cases.** *Stroke* 2004, **35**:2287–2293.
- Peterson JW, Kwun BD, Teramura A, Hackett JD, Morgan JA, Nishizawa S, Bun T, Zervas NT: **Immunological reaction against the aging human subarachnoid erythrocyte. A model for the onset of cerebral vasospasm after subarachnoid hemorrhage.** *J Neurosurg* 1989, **71**:718–726.
- Wohner N: **Role of cellular elements in thrombus formation and dissolution.** *Cardiovasc Hematol Agents Med Chem* 2008, **6**:224–228.

doi:10.1186/1742-2094-9-222

Cite this article as: Hasan et al.: Macrophage imbalance (M1 vs. M2) and upregulation of mast cells in wall of ruptured human cerebral aneurysms: preliminary results. *Journal of Neuroinflammation* 2012 **9**:222.

Submit your next manuscript to BioMed Central and take full advantage of:

- Convenient online submission
- Thorough peer review
- No space constraints or color figure charges
- Immediate publication on acceptance
- Inclusion in PubMed, CAS, Scopus and Google Scholar
- Research which is freely available for redistribution

Submit your manuscript at
www.biomedcentral.com/submit

